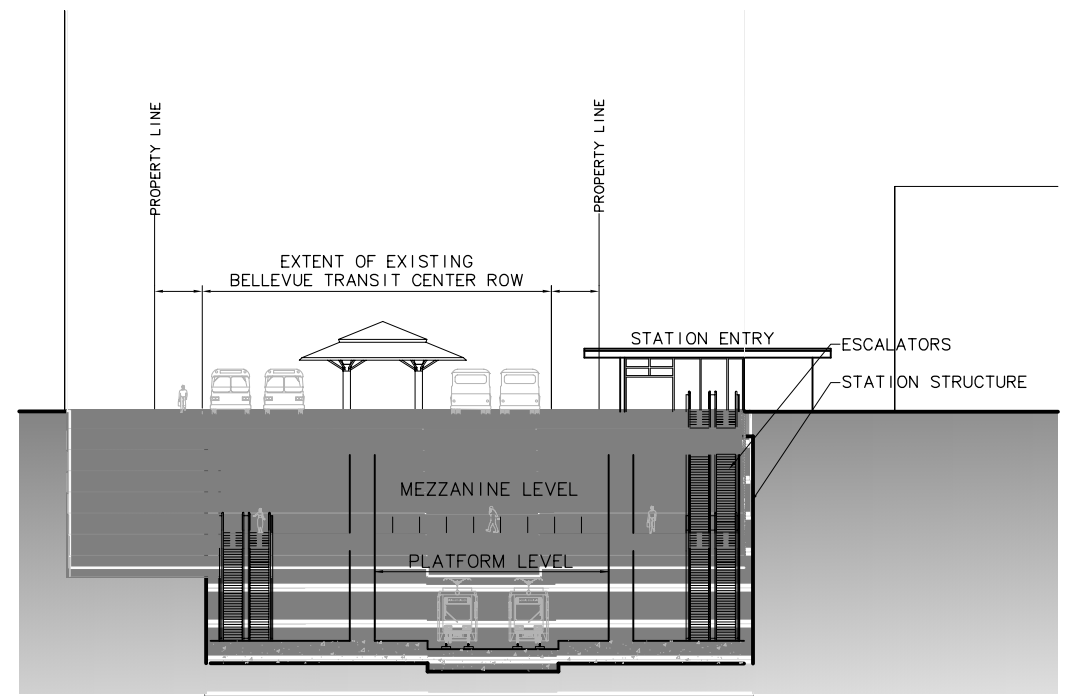
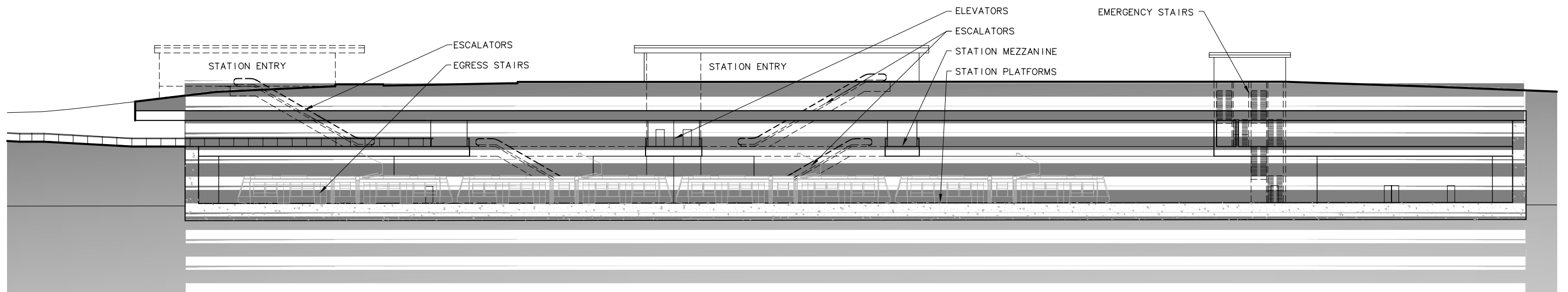




XREF'S  
 Resolved  
 ELC\_BC6TAX\_A  
 REG-DCON  
 ZG-2234H  
 Unresolved  
 LTSCALE  
 1=1



**CROSS SECTION B**  
 SCALE: 1"=20' BC6T-AS01



**SECTION A**  
 SCALE: 1"=20' BC6T-AS01



c:\work\ELC\BC6T\_AX01.dwg  
 10/16/08 09:42 : eackerm OE5396

No.	Date	Dsn.	Chk.	App.	Revisions

Designed By:  
 Drawn By:  
 Checked By:  
 Approved By:

**FEIS  
 CONCEPTUAL**

**CH2MHILL**  
 IN ASSOCIATION WITH  
**PARSONS & INCA**  
 ENGINEERS INC.

**HEWITT**

**SOUNDTRANSIT**

Scale: 1"=20'  
 Filename: ELC\BC6T\_AX01.dwg  
 Contract No.: EL\_SEG\_C

**EAST LINK PROJECT  
 SEGMENT C**

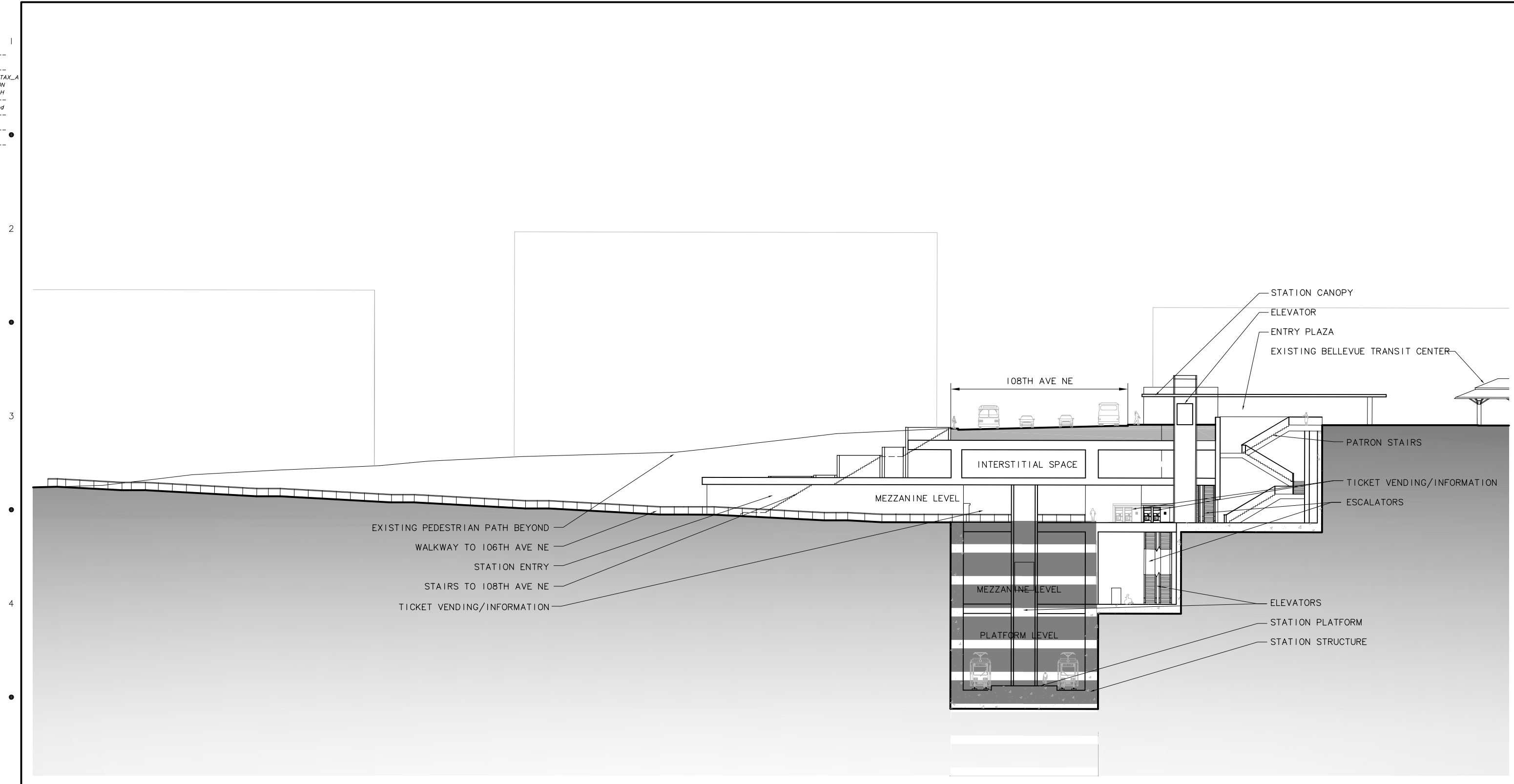
BELLEVUE TRANSIT CENTER STATION  
 ALTERNATIVES C1T & C2T  
 CROSS SECTION & SECTION

Drawing No.: **BC6T-AX01**  
 Sheet No.: **C-141**  
 Rev.:





XREF'S  
 Resolved  
 ELC\_B08TAX\_A  
 REG-DCON  
 ZG-2234H  
 Unresolved  
 LTSCALE  
 1=1


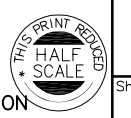


**CROSS SECTION B**  
 SCALE: 1"=20' B08T-AS01



c:\work\ELC\B08T\_AX02.dwg  
 10/16/08 09:31 : eackerm OE5396

						Designed By:
						Drawn By:
						Checked By:
						Approved By:
No.	Date	Dsn.	Chk.	App.	Revisions	

<b>FEIS          CONCEPTUAL</b>	<b>CH2MHILL</b> <small>IN ASSOCIATION WITH</small> <b>PARSONS &amp; INCA</b> <small>ENGINEERS INC.</small>	<b>HEWITT</b>	 <b>SOUNDTRANSIT</b>	Scale: 1"=20' Filename: ELC\B08T_AX02.dwg Contract No.: EL_SEG_C	<b>EAST LINK PROJECT          SEGMENT C</b> BELLEVUE TRANSIT CENTER STATION 108TH ALTERNATIVE (C3T) CROSS SECTION	Drawing No.: B08T-AX02 Sheet No.: Rev.:
	Submitted:	Date:	Approved:	Date:		<b>C-144</b>