

XREF'S
 Resolved
 ELC_B08AAP_A
 ELC_B08AAS_I
 ELC_BUSRTS_I
 ELC_C4A_CM
 ELC_C4A_KA
 REG-DCON
 X0228CN
 X0228SF
 ZG-2234H
 X0228rx
 Unresolved
 LTSCALE
 1=1

NOTES/LEGEND HEADING

- ALIGNMENT C4A
- WESTBOUND BUS ROUTES 222, 240, 249, 253, 271 AND 921 TERMINATE AT BELLEVUE TRANSIT CENTER
- EASTBOUND BUS ROUTES 111-114, 237, 560, 564 AND 565 TERMINATE AT BELLEVUE TRANSIT CENTER
- BUS ROUTE 222 CONTINUES SOUTH ON BELLEVUE WAY SE
- BUS ROUTE 921 CONTINUES SOUTH ON 16TH AVE SE
- PARATRANSIT STOP AT BELLEVUE TRANSIT CENTER LOCATED IN BAY 6

SYMBOLS KEY

NEW BUS STOP (Hatched rectangle)

EXISTING BUS STOP (White rectangle)

BUS LAYOVER (Dashed rectangle)

NEW BUS SHELTER (Square with 'X')

PARATRANSIT STOP (Square with 'P')

BUS ROUTE: (Circle with letter)

- B - BUS ROUTE: 231, 555
- C - BUS ROUTE: 532, 535
- E - BUS ROUTE: 222, 921
- F - BUS ROUTE: 240
- G - BUS ROUTE: 249
- H - BUS ROUTE: 253
- I - BUS ROUTE: 271
- J - BUS ROUTE: 233
- K - BUS ROUTE: 234
- L - BUS ROUTE: 243
- M - BUS ROUTE: 342

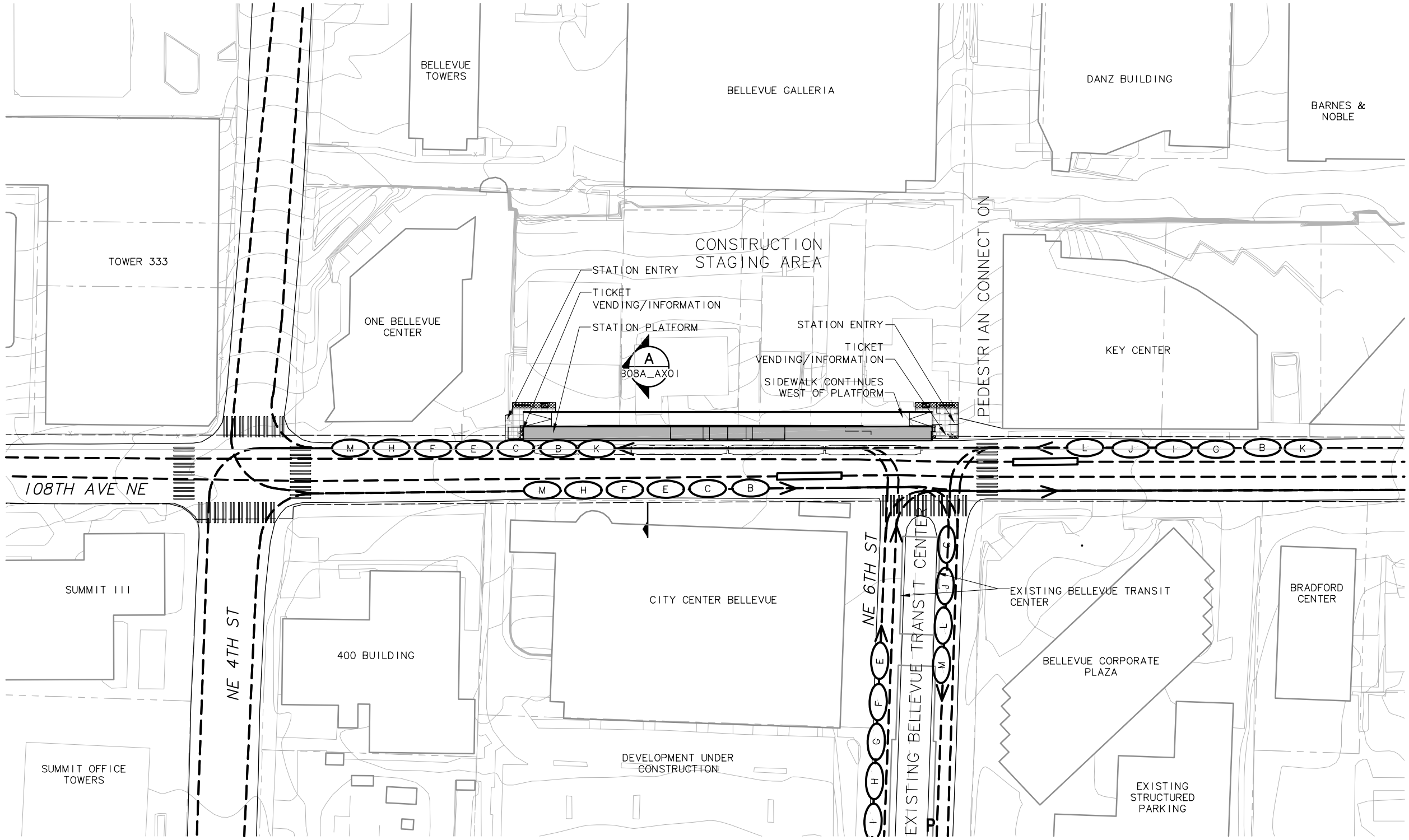
BIKE STORAGE (Cross-hatched rectangle)

BIKE SHELTER (Dotted rectangle)

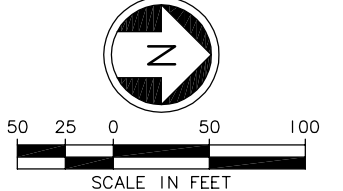
TICKET VENDING/INFORMATION (Square with 'G')

CROSSWALK (Vertical dashed lines)

TRACK (Horizontal dashed lines)



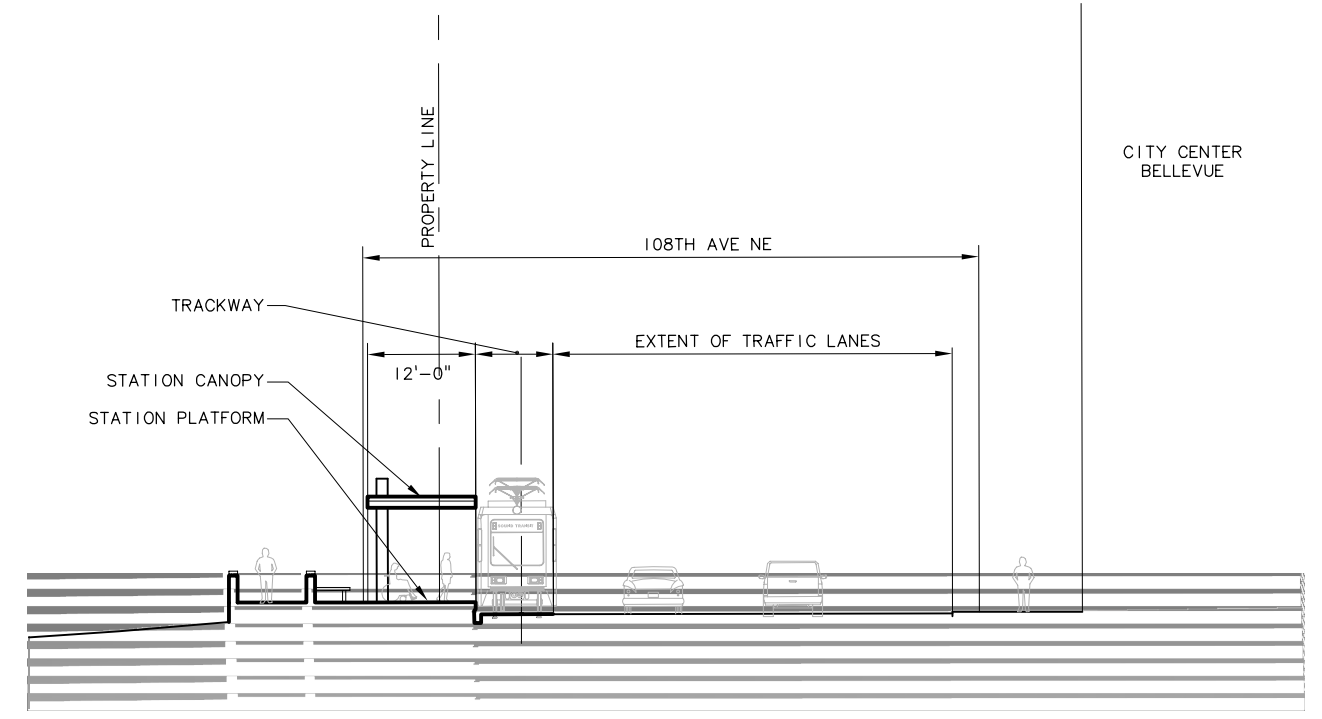
STATION ACCESS PLAN
 SCALE: 1"=50'



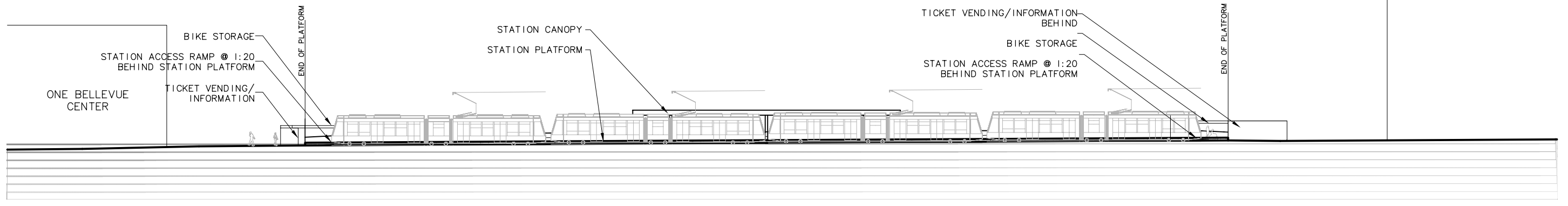
c:\work\ELC\B08A_AS01.dwg
 10/16/08 09:09 : eackerm OE5396

<table border="1"> <tr><td>No.</td><td>Date</td><td>Dsn.</td><td>Chk.</td><td>App.</td><td>Revisions</td></tr> <tr><td> </td><td> </td><td> </td><td> </td><td> </td><td> </td></tr> <tr><td> </td><td> </td><td> </td><td> </td><td> </td><td> </td></tr> <tr><td> </td><td> </td><td> </td><td> </td><td> </td><td> </td></tr> </table>					No.	Date	Dsn.	Chk.	App.	Revisions																			Designed By: Drawn By: Checked By: Approved By:	FEIS CONCEPTUAL	CH2MHILL IN ASSOCIATION WITH PARSONS & INCA ENGINEERS INC.	HEWITT	SOUNDTRANSIT	Scale: 1"=50' Filename: ELC\B08A_AS01.dwg Contract No.: EL_SEG_C	EAST LINK PROJECT SEGMENT C BELLEVUE TRANSIT CENTER STATION AT-GRADE COUPLET (C4A) WESTBOUND STATION ACCESS PLAN	Drawing No.: B08A-AS01 Sheet No.: C-145 Rev.:
No.	Date	Dsn.	Chk.	App.	Revisions																															

XREF'S
 Resolved
 ELC_B08AAX_A
 REG-DCON
 ZG-2234H
 Unresolved
 LTSCALE
 1=1



CROSS SECTION A
 SCALE: 1"=10' B08A-AS01



ELEVATION
 SCALE: 1"=20'



c:\work\ELCIB08A_AX01.dwg
 10/16/08 09:10 : eackerm OE5396

No.	Date	Dsn.	Chk.	App.	Revisions

Designed By:
 Drawn By:
 Checked By:
 Approved By:

**FEIS
 CONCEPTUAL**

CH2MHILL
 IN ASSOCIATION WITH
PARSONS & INCA
 ENGINEERS INC.

HEWITT

SOUNDTRANSIT

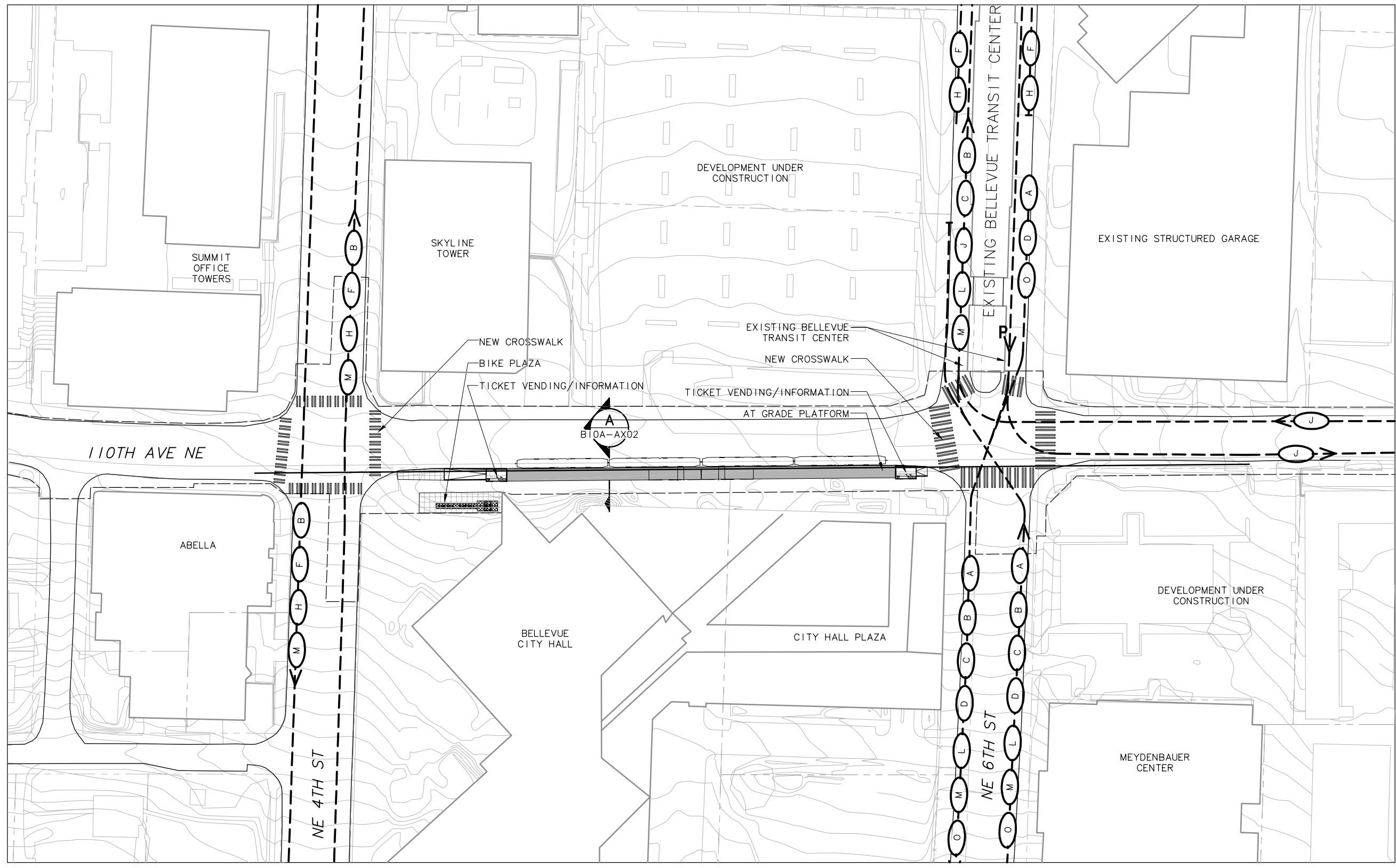
Scale: 1"=20'
 Filename: ELCIB08A_AX01.dwg
 Contract No.: EL_SEG_C

**EAST LINK PROJECT
 SEGMENT C**

BELLEVUE TRANSIT CENTER STATION
 AT-GRADE COUPLET (C4A) WESTBOUND
 CROSS SECTION & ELEVATION

Drawing No.: **B08A-AX01**
 Sheet No.: **C-146**
 Rev.:

XREF'S
 Resolved
 ELC_B10AAP_B
 ELC_B10AAS_2
 ELC_BUSRTS_1
 ELC_C4A_CM
 ELC_C4A_KA
 REG-DCON
 X022BCN
 X022BSF
 X052BCN
 X052BSF
 ZG-2234H
 X0228xx
 X0528xx
 Unresolved
 LTSCALE
 1/1

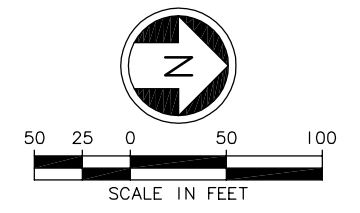


- NOTES/LEGEND HEADING**
1. ALIGNMENT C4A
 2. WESTBOUND BUS ROUTES 222, 240, 249, 253, 271 AND 921 TERMINATE AT BELLEVUE TRANSIT CENTER
 3. EASTBOUND BUS ROUTES 111-114, 237, 560, 564 AND 565 TERMINATE AT BELLEVUE TRANSIT CENTER
 4. PARATRANSIT STOP AT BELLEVUE TRANSIT CENTER IS LOCATED IN BAY 6
 5. EXISTING DRIVEWAY TO CITY HALL FROM 110TH AVE NE WOULD BE CLOSED

SYMBOLS KEY

- NEW BUS STOP
- EXISTING BUS STOP
- BUS LAYOVER
- NEW BUS SHELTER
- PARATRANSIT STOP
- BUS ROUTE: 111-114, 560
- BUS ROUTE: 231, 555
- BUS ROUTE: 532, 535
- BUS ROUTE: 564 / 565
- BUS ROUTE: 240
- BUS ROUTE: 253
- BUS ROUTE: 233
- BUS ROUTE: 243
- BUS ROUTE: 342
- BUS ROUTE: 237
- BIKE STORAGE
- BIKE SHELTER
- TICKET VENDING/ INFORMATION
- CROSSWALK
- TRACK

STATION ACCESS PLAN
 SCALE: 1"=50'

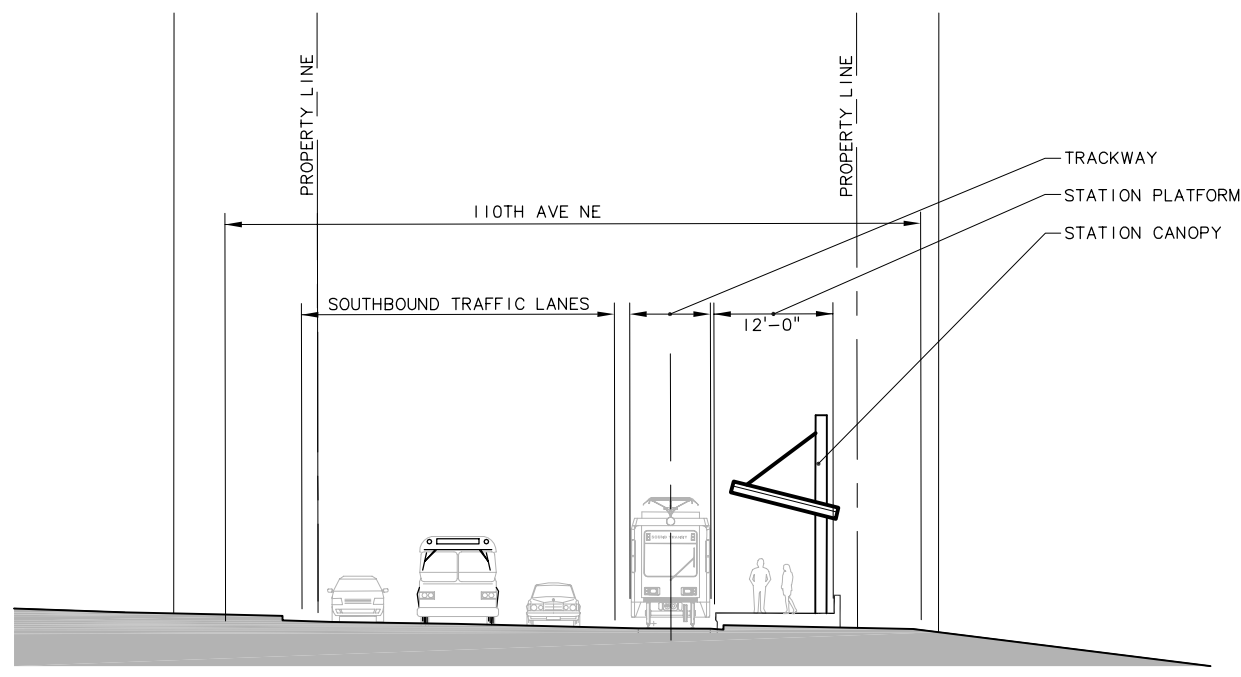


c:\work\ELCIB10A_AS02.dwg
 10/16/08 09:35 : eackerm OE5396

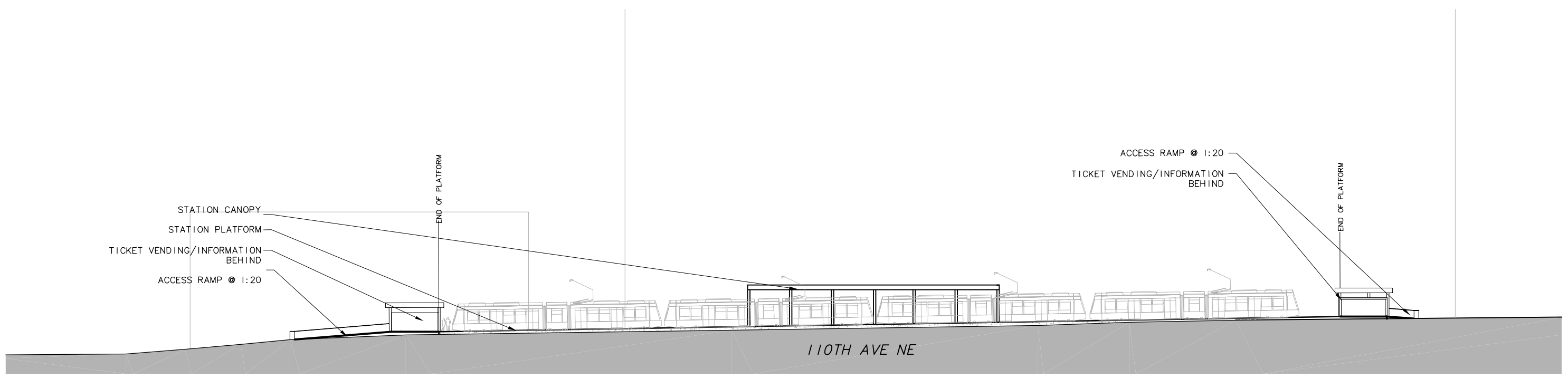
					Designed By:
					Drawn By:
					Checked By:
					Approved By:
No.	Date	Dsn.	Chk.	App.	Revisions

FEIS CONCEPTUAL	CH2MHILL IN ASSOCIATION WITH PARSONS & INCA ENGINEERS INC.		HEWITT		 SOUNDTRANSIT		Scale: 1"=50'	EAST LINK PROJECT SEGMENT C		Drawing No.: B10A-AS02
	Submitted:	Date:	Approved:	Date:	Date:	EL SEG_C	BELLEVUE TRANSIT CENTER STATION AT-GRADE COUPLER (C4A) EASTBOUND STATION ACCESS PLAN		Sheet No.: C-147	Rev.:

XREF'S
 Resolved
 ELC_B10AAX_B
 REG-DCON
 Zg-2234h
 Unresolved
 LTSCALE
 1=1



CROSS SECTION A
 SCALE: 1"=10' B10A-AS02



ELEVATION
 SCALE: 1"=20'



c:\work\ELC\B10A_AX02.dwg
 10/16/08 09:36 : eackerm OE5396

No.	Date	Dsn.	Chk.	App.	Revisions

Designed By:
 Drawn By:
 Checked By:
 Approved By:

**FEIS
 CONCEPTUAL**

CH2MHILL
 IN ASSOCIATION WITH
PARSONS & INCA
 ENGINEERS INC.

HEWITT

SOUNDTRANSIT

Scale: 1"=20'
 Filename: ELC\B10A_AX02.dwg
 Contract No.: EL_SEG_C

**EAST LINK PROJECT
 SEGMENT C**

BELLEVUE TRANSIT CENTER STATION
 AT-GRADE COUPLET (C4A) EASTBOUND
 CROSS SECTION & ELEVATION

Drawing No.: **B10A-AX02**
 Sheet No.: **C-148**
 Rev.:

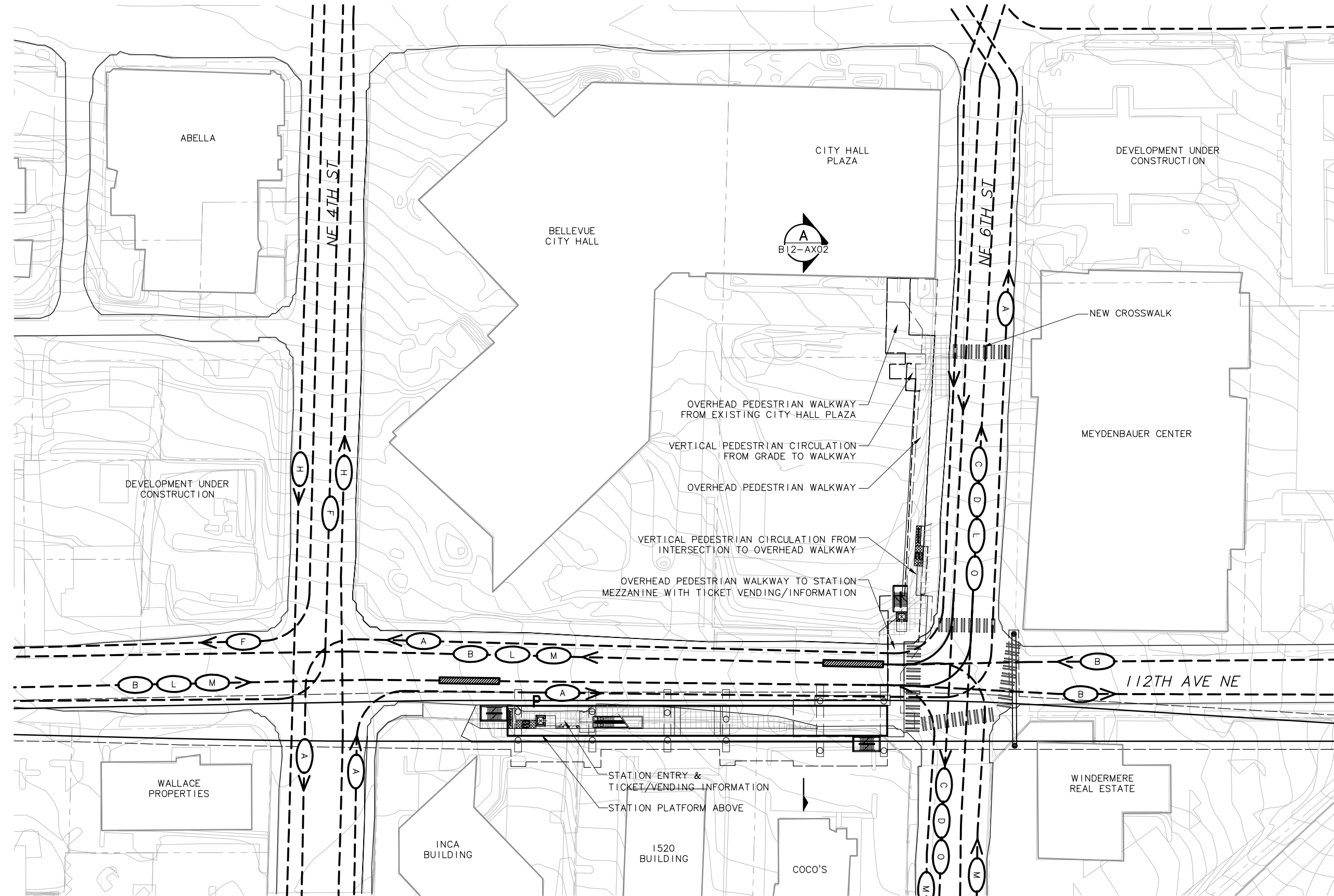
XREF'S
 Resolved
 ELC_B12EAG_A
 ELC_B12EAS_L
 ELC_BUSRTS_L
 ELC_C7E_CM
 ELC_C7E_KA
 REG-DCON
 X022BCN
 X0228SF
 X0528CN
 X0528SF
 ZG-2234H
 X0228xx
 X0528xx
 Unresolved
 LTSCALE
 1=1

NOTES/LEGEND HEADING

1. ALIGNMENT C7E
2. WESTBOUND ROUTES 222,240, 249, 271 AND 921 TERMINATE AT BELLEVUE TRANSIT CENTER
3. EASTBOUND ROUTES 111-114, 237, 560, 564 AND 565 TERMINATE AT BELLEVUE TRANSIT CENTER
4. BUS ROUTES 231, 240, AND 555 WOULD TRAVEL THE ROUTES DEPICTED HERE ONLY FOR THIS STATION ALIGNMENT

SYMBOLS KEY

	NEW BUS STOP
	EXISTING BUS STOP
	BUS LAYOVER
	NEW BUS SHELTER
	PARATRANSIT STOP
	BUS ROUTE: 111-114, 560
	BUS ROUTE: 240, 255
	BUS ROUTE: 532, 535
	BUS ROUTE: 564, 565
	BUS ROUTE: 240
	BUS ROUTE: 253
	BUS ROUTE: 243
	BUS ROUTE: 342
	BUS ROUTE: 237
	BIKE STORAGE
	BIKE SHELTER
	TICKET VENDING/ INFORMATION
	CROSSWALK
	TRACK



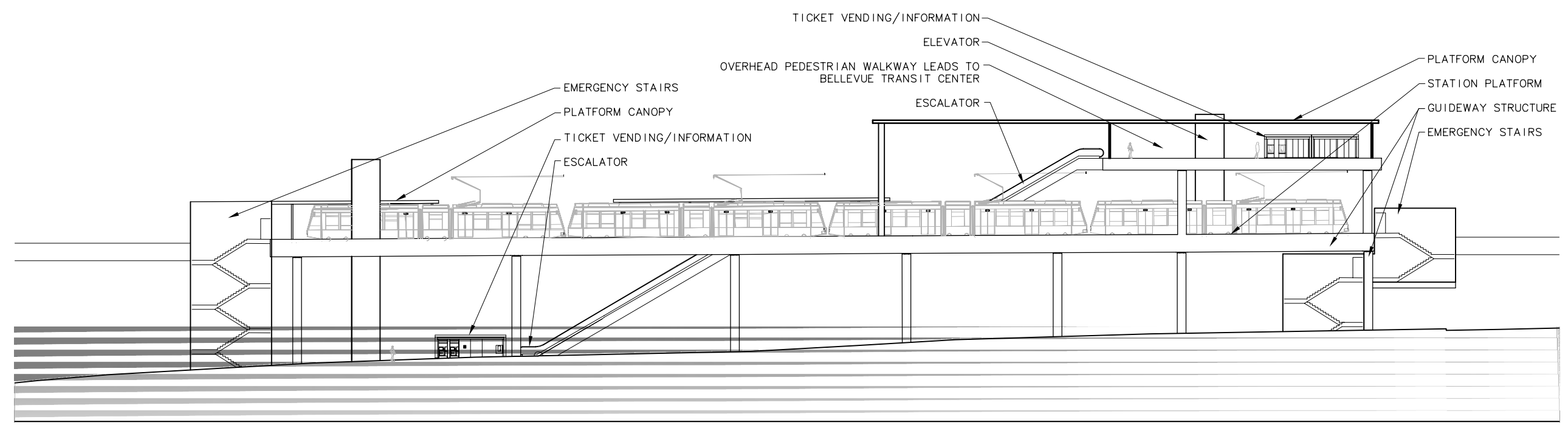
STATION ACCESS PLAN

SCALE: 1"=50'

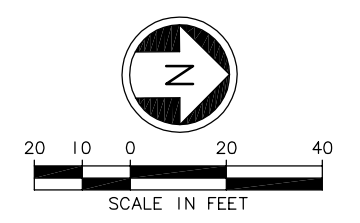
c:\work\ELC\B12E_AS01.dwg
 10/16/08 09:40 : eackerm OE5396

					Designed By:		FEIS CONCEPTUAL	CH2MHILL IN ASSOCIATION WITH PARSONS & INCA ENGINEERS INC.	HEWITT		Scale: 1"=50'		EAST LINK PROJECT SEGMENT C	Drawing No.: B12E-AS01					
					Drawn By:						Filename: ELC\B12E_AS01.dwg			Contract No.: EL_SEG_C		Sheet No.: C-149			
					Checked By:						Submitted:			Date:		Approved:		Rev.:	
					Approved By:						Date:			Date:		Date:			
No.	Date	Dsn.	Chk.	App.	Revisions														

XREF'S
 Resolved
 ELC_B12EAP_A
 ELC_B12EAX_A
 REG-DCON
 X0228CN
 X0228SF
 X0528CN
 X0528SF
 ZG-2234H
 x0228rx
 x0528rx
 Unresolved
 ELC_C7E_KA
 LTSCALE
 1=1





ELEVATION
 SCALE: 1"=20'

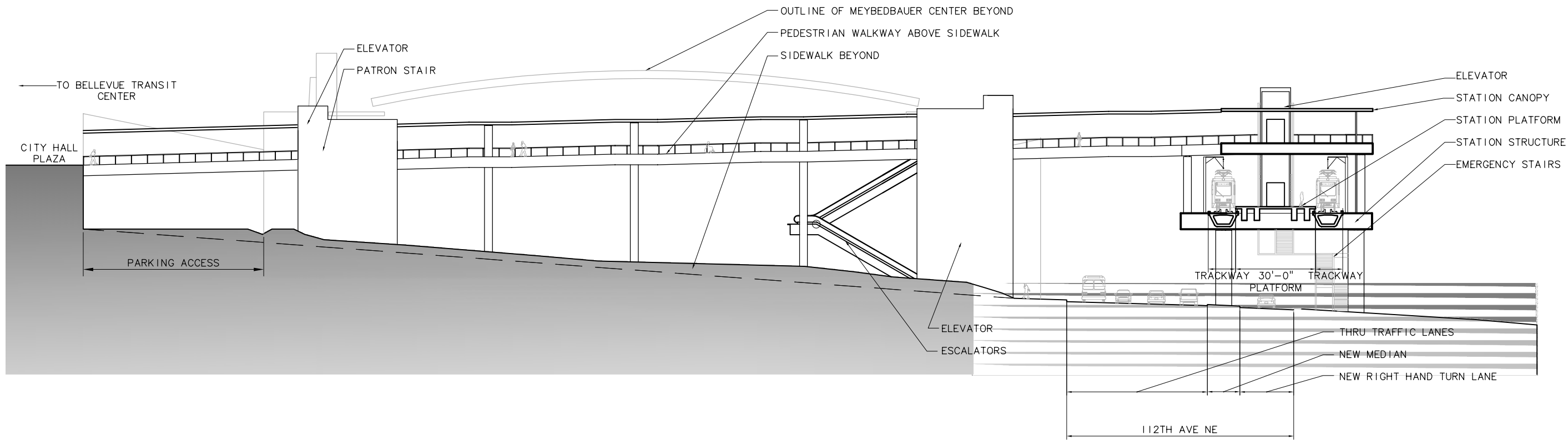


c:\work\ELC\B12E_AX01.dwg
 10/16/08 09:40 : eackerm OE5396

No.	Date	Dsn.	Chk.	App.	Revisions

FEIS CONCEPTUAL	CH2MHILL <small>IN ASSOCIATION WITH</small> PARSONS & INCA <small>ENGINEERS INC.</small>		HEWITT	 SOUNDTRANSIT	Scale: 1"=20' Filename: ELC\B12E_AX01.dwg Contract No.: EL_SEG_C	EAST LINK PROJECT SEGMENT C BELLEVUE TRANSIT CENTER STATION 112TH ALTERNATIVE (C7E) ELEVATION	Drawing No.: B12E-AX01 Sheet No.: Rev.:
	Designed By:	Submitted:		Date:	Date:		C-150
	Drawn By:	Date:		Approved:	Date:		
	Checked By:	Date:		Approved:	Date:		
Approved By:	Date:		Approved:	Date:			

XREF'S
 Resolved
 ELC_B12EAX_A
 REG-DCOM
 X0231CN
 X0231SF
 ZG-2234H
 X0231rx
 Unresolved
 LTSCALE
 1=1



CROSS SECTION A
 SCALE: 1"=20' B12E-AS01



c:\work\ELCIB12E_AX02.dwg
 10/16/08 09:41 : eackerm OE5396

No.	Date	Dsn.	Chk.	App.	Revisions

Designed By:
 Drawn By:
 Checked By:
 Approved By:

FEIS
 CONCEPTUAL

CH2MHILL
 IN ASSOCIATION WITH
PARSONS & INCA
 ENGINEERS INC.

HEWITT

SOUNDTRANSIT

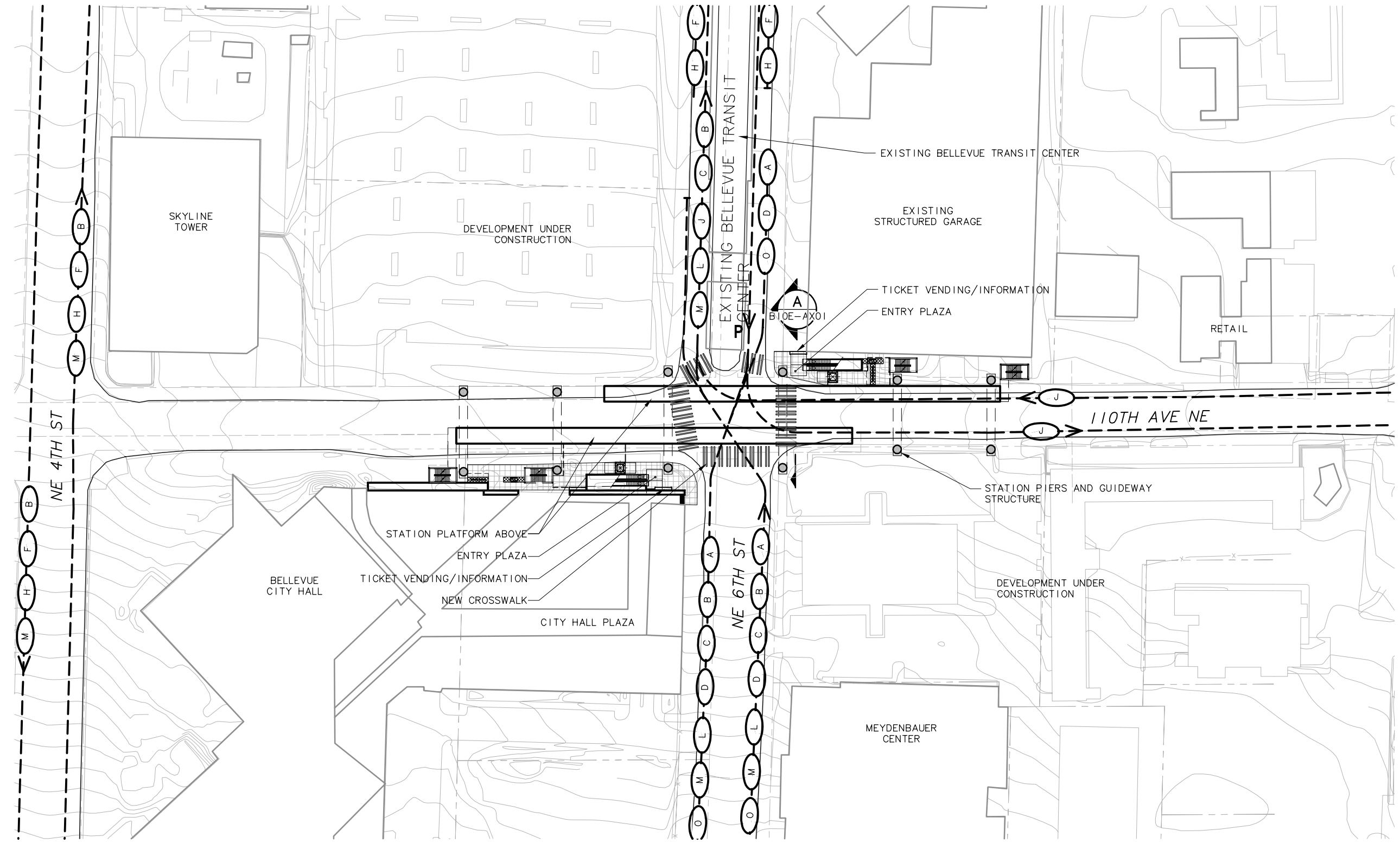
Scale: 1"=20'
 Filename: ELCIB12E_AX02.dwg
 Contract No.: EL_SEG_C

**EAST LINK PROJECT
 SEGMENT C**
 BELLEVUE TRANSIT CENTER STATION
 112TH ALTERNATIVE (C7E)
 CROSS SECTION



Drawing No.: B12E-AX02
 Sheet No.:
 Rev.:
 C-151

XREF'S
 Resolved
 ELC_B10EAG_B
 ELC_B10EAS_L
 ELC_BUSRTS_L
 ELC_CBE_KA
 REG-DCON
 X022BCN
 X022BSF
 X0231CN
 X0231SF
 X0528CN
 X0528SF
 X0531CN
 X0531SF
 ZG-2234H
 X022BRX
 X0231RX
 X052BRX
 X0531RX
 Unresolved
 ELC_CBE_CM
 LTSCALE
 1=1



- ### NOTES/LEGEND HEADING
- ALIGNMENT C8E
 - WESTBOUND BUS ROUTES 222, 240, 249, 253, 271 AND 921 TERMINATE AT BELLEVUE TRANSIT CENTER
 - EASTBOUND BUS ROUTES 111-114, 237, 560, 564 AND 565 TERMINATE AT BELLEVUE TRANSIT CENTER
 - PARATRANSIT STOP AT BELLEVUE TRANSIT CENTER LOCATED IN BAY 6

SYMBOLS KEY

- NEW BUS STOP
- EXISTING BUS STOP
- BUS LAYOVER
- NEW BUS SHELTER
- PARATRANSIT STOP
- BUS ROUTE: 111-114, 560
- BUS ROUTE: 231, 555
- BUS ROUTE: 532, 535
- BUS ROUTE: 564 / 565
- BUS ROUTE: 240
- BUS ROUTE: 253
- BUS ROUTE: 233
- BUS ROUTE: 243
- BUS ROUTE: 342
- BUS ROUTE: 237
- BIKE STORAGE
- BIKE SHELTER
- TICKET VENDING/ INFORMATION
- CROSSWALK
- TRACK

STATION ACCESS PLAN
 SCALE: 1"=50'

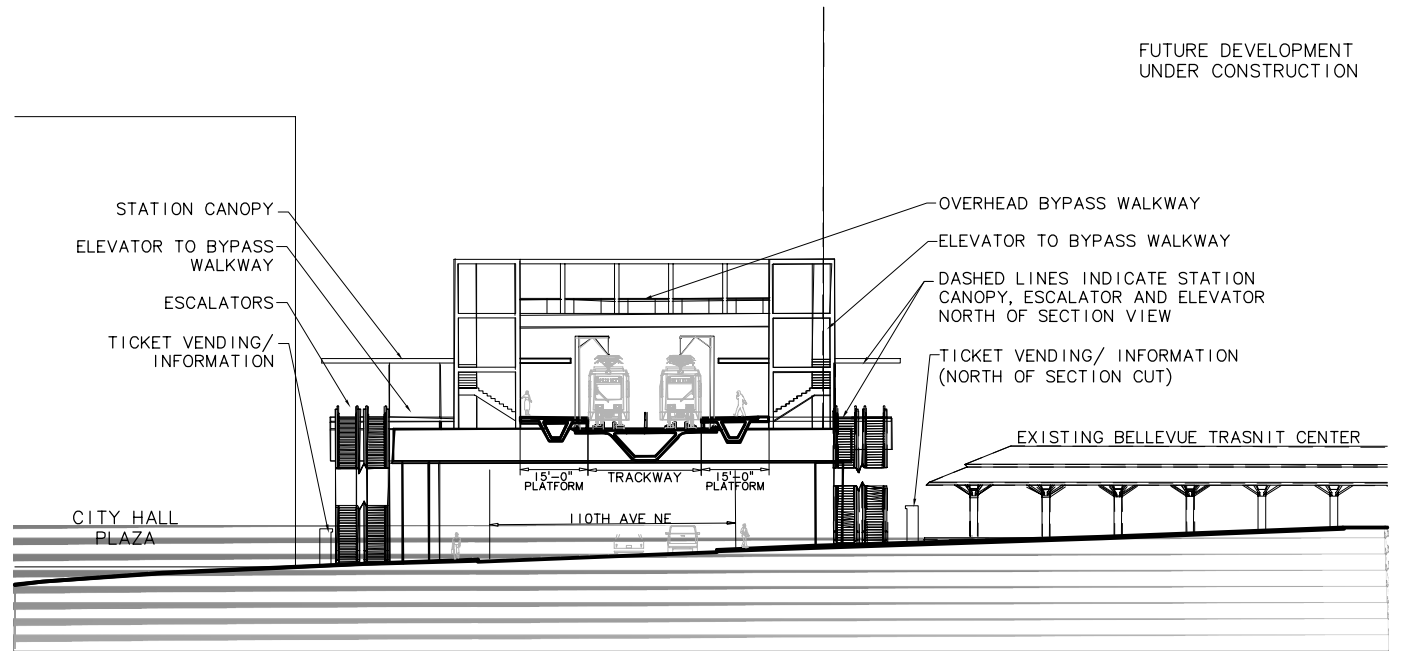
SCALE IN FEET

c:\work\ELC\B10E_AS01.dwg
 10/16/08 09:36 : eackerm OE5396

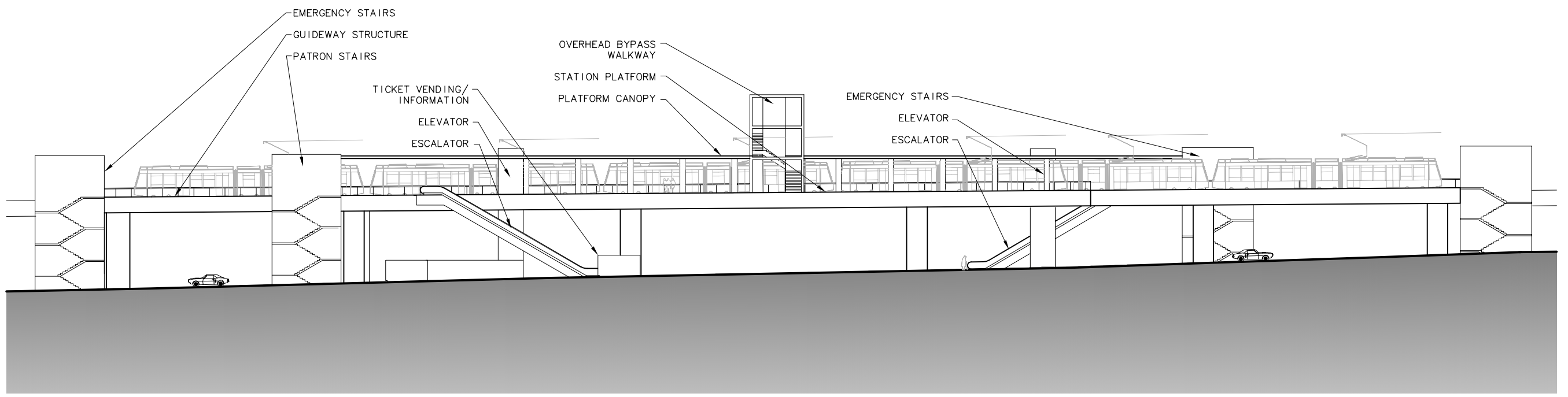
No.	Date	Dsn.	Chk.	App.	Revisions

FEIS CONCEPTUAL	CH2MHILL <small>IN ASSOCIATION WITH</small> PARSONS & INCA <small>ENGINEERS INC.</small>	HEWITT		Scale: 1"=50' Filename: ELC\B10E_AS01.dwg Contract No.: EL_SEG_C	EAST LINK PROJECT SEGMENT C	Drawing No.: B10E-AS01
	Submitted:	Date:	Approved:	Date:	BELLEVUE TRANSIT CENTER STATION 110TH ALTERNATIVE (C8E) STATION ACCESS PLAN	Sheet No.: C-152
						Rev.:
	THE PRINT RELEASED IS A HALF SCALE					C-152

XREF'S
 Resolved
 ELC_B10EAX_B
 REG-DCON
 ZG-2234H
 Unresolved
 ELC_B10EAP_B
 X0228CN
 X0228SF
 X0228rx
 LTSCALE
 1=1



CROSS SECTION A
 SCALE: 1"=20' B10E-AS01



ELEVATION
 SCALE: 1"=20'



c:\work\ELC\B10E_AX01.dwg
 10/16/08 09:37 : eackerm OE5396

										Designed By:
										Drawn By:
										Checked By:
										Approved By:
No.	Date	Dsn.	Chk.	App.	Revisions					

FEIS CONCEPTUAL	CH2MHILL <small>IN ASSOCIATION WITH</small> PARSONS & INCA <small>ENGINEERS INC.</small>	HEWITT		Scale: 1"=20' Filename: ELC\B10E_AX01.dwg Contract No.: EL_SEG_C	EAST LINK PROJECT SEGMENT C BELLEVUE TRANSIT CENTER STATION 110TH ALTERNATIVE (C8E) CROSS SECTION & ELEVATION	Drawing No.: B10E-AX01 Sheet No.: Rev.: C-153
	Submitted:	Date:	Approved:	Date:		