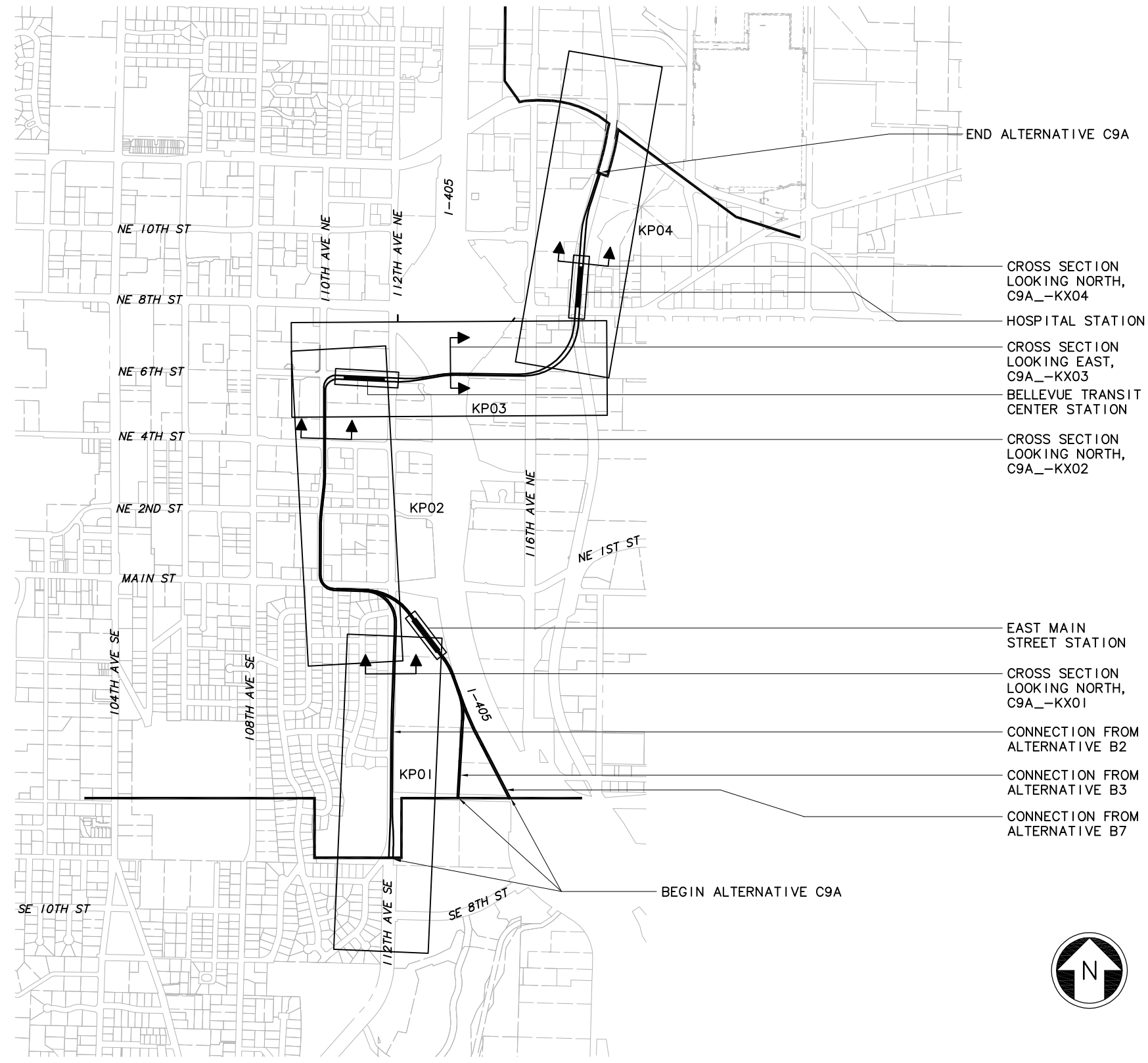


DWG INFO:
 L1SCALE:
 1=1
 XREFs:
 -Attach:
 -Overlay:
 ELC_C9A_KA-100
 SUB-SDE15
 ZC-2234H
 key_Segment
 x0222rx
 x0225rx
 x0228rx
 x0231rx
 x0522rx
 x0525rx
 x0528rx
 x0531rx
 x0534rx
 x0831rx
 x0834rx
 -Unresolved:



- END ALTERNATIVE C9A
- CROSS SECTION
LOOKING NORTH,
C9A_KX04
- HOSPITAL STATION
- CROSS SECTION
LOOKING EAST,
C9A_KX03
- BELLEVUE TRANSIT
CENTER STATION
- CROSS SECTION
LOOKING NORTH,
C9A_KX02
- EAST MAIN
STREET STATION
- CROSS SECTION
LOOKING NORTH,
C9A_KX01
- CONNECTION FROM
ALTERNATIVE B2
- CONNECTION FROM
ALTERNATIVE B3
- CONNECTION FROM
ALTERNATIVE B7
- BEGIN ALTERNATIVE C9A



c:\work\sde15\ELC_C9A_GZ05.dwg
 10/04/10 14:05 : bolimar OE6579

No.	Date	Dsn.	Chk.	App.	Revisions

Designed By:
 Drawn By:
 Checked By:
 Approved By:

**FEIS
CONCEPTUAL**

CH2MHILL

**INCA
ENGINEERS INC.**

**BOLIMA
DRAFTING & DESIGN INC.**

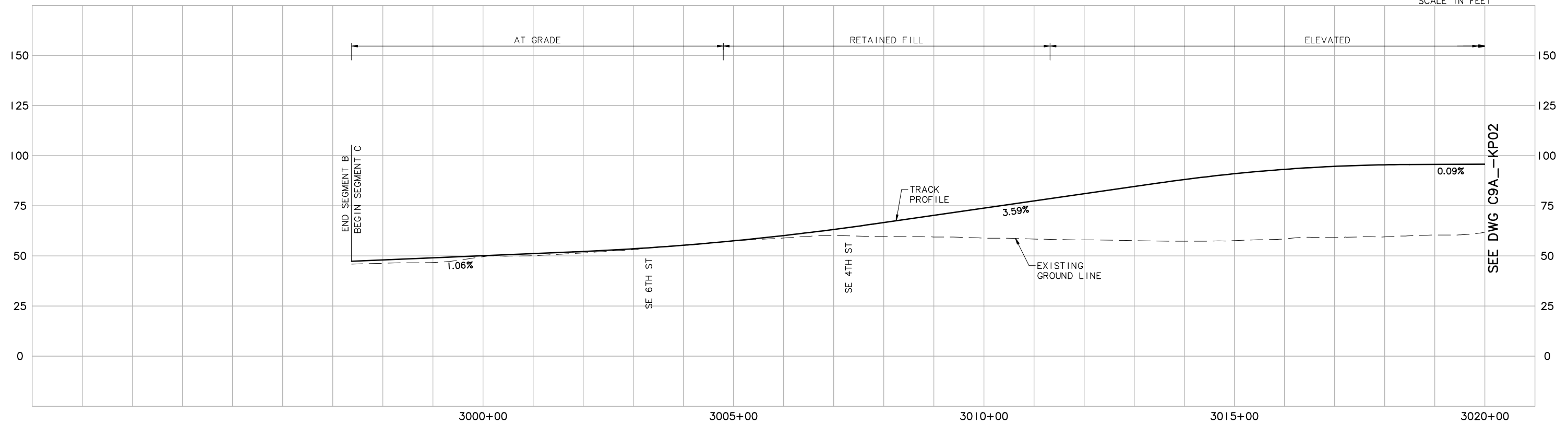
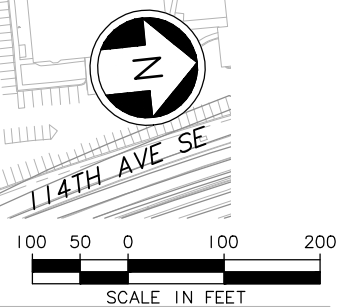
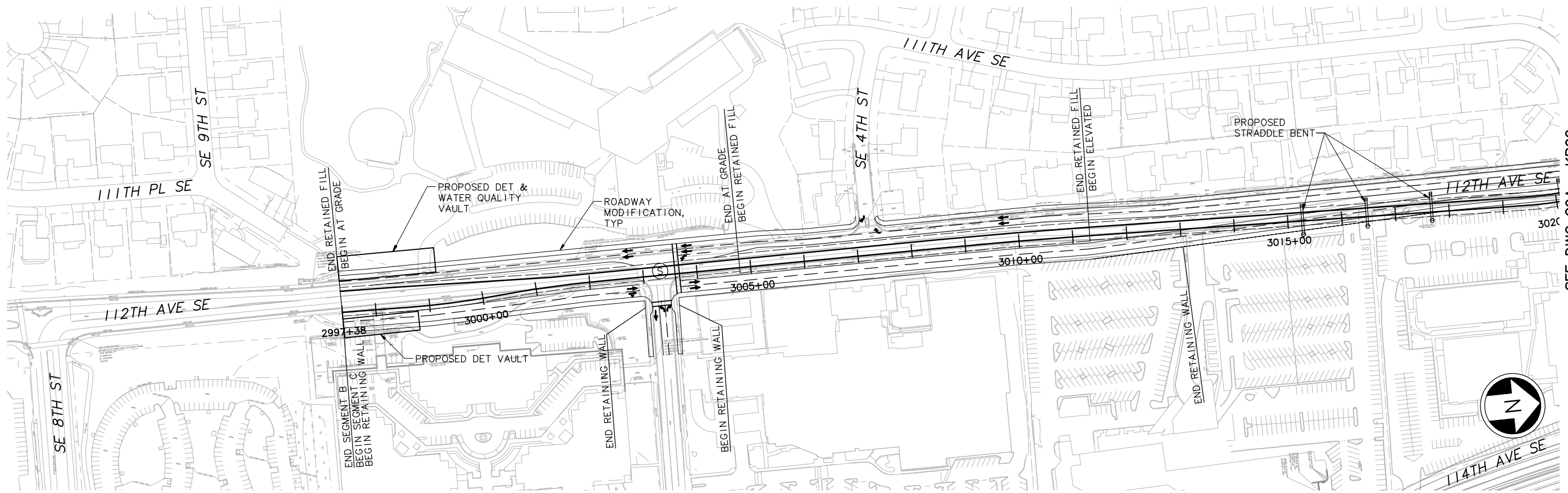
SOUNDTRANSIT

Scale: NTS
 Filename: ELC_2C9A_GZ05.dwg
 Contract No.:
 Date: 07/30/10

**LINK LIGHT RAIL PROJECT
EAST CORRIDOR
SEGMENT C - ALT C9A
KEY PLAN**

Drawing No.: C9A_GZ05
 Sheet No.:
 Rev.:
C-164

DWG. INFO:
 L1SCALE:
 1=1
 XREFs:
 -Attach:
 -Overlaid:
 ELC_C9A_KA-100
 SUB-FE15
 ZG-2234H
 ZG-G10010
 key_Segment
 x0222r
 x0222f
 x0522r
 x0522f
 x0525r
 x0525f
 x0528r
 x0528f
 x0531r
 x0531f
 x1405_chon
 -Unresolved: 2



c:\work\feis\segment_c\c9a\ELC_209A_KP01.dwg
 04/15/11 16:45 : khuum 0E6585

No.	Date	Dsn.	Chk.	App.	Revisions

Designed By:
 Drawn By:
 Checked By:
 Approved By:

FEIS CONCEPTUAL

CH2MHILL

INCA ENGINEERING INC.

BOLIMA DRAFTING & DESIGN INC.

SOUNDTRANSIT

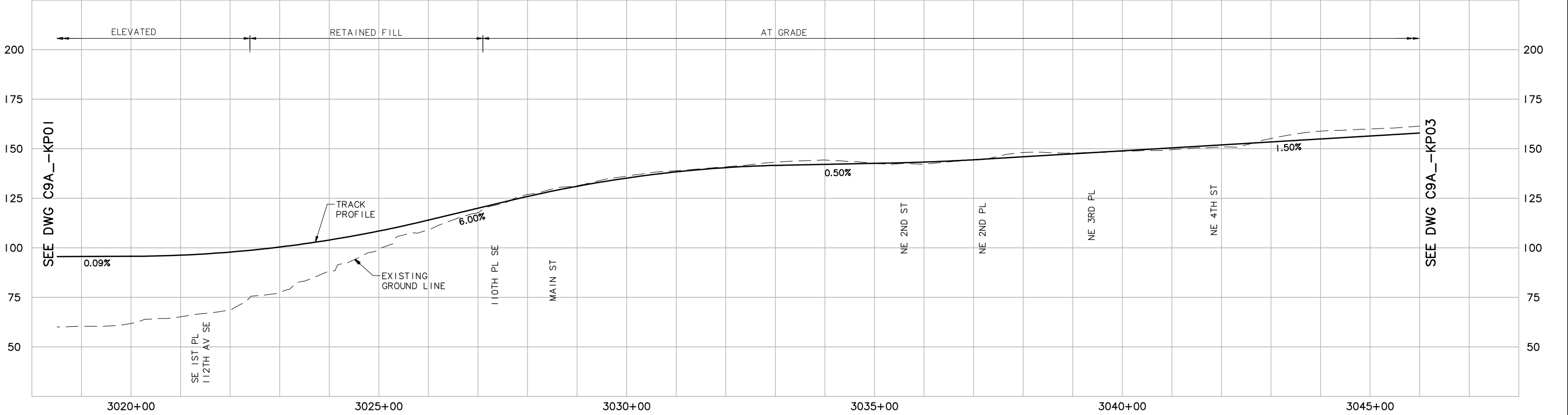
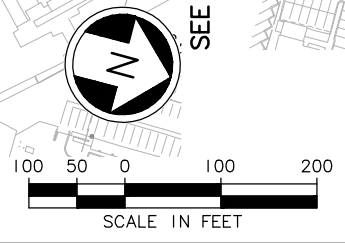
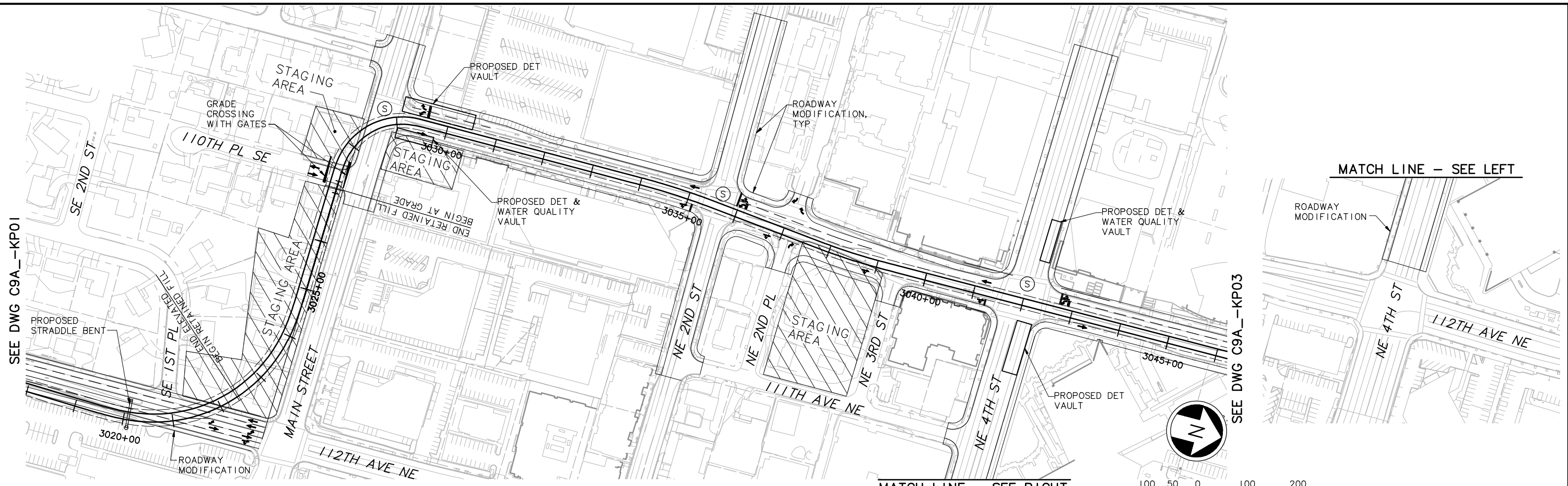
Scale:
 H: 1"=100'; V: 1"=25'
 Filename:
 ELC_209A_KP01.dwg
 Contract No.:

LINK LIGHT RAIL PROJECT
EAST CORRIDOR
SEGMENT C - ALT C9A
TRACK PLAN & PROFILE



Drawing No.: C9A_-KP01
 Sheet No.: C-165
 Rev.:

DWG. INFO:
 L1SCALE:
 1"=1'
 XREFs:
 -Attach:
 -Overlay:
 ELC_C9A_KA-100
 ZG-2234H
 ZG-G10010
 x0228r
 x0228s
 x0228t
 x0228u
 x0228v
 x0228w
 x0228x
 x0228y
 x0228z
 -Unresolved:



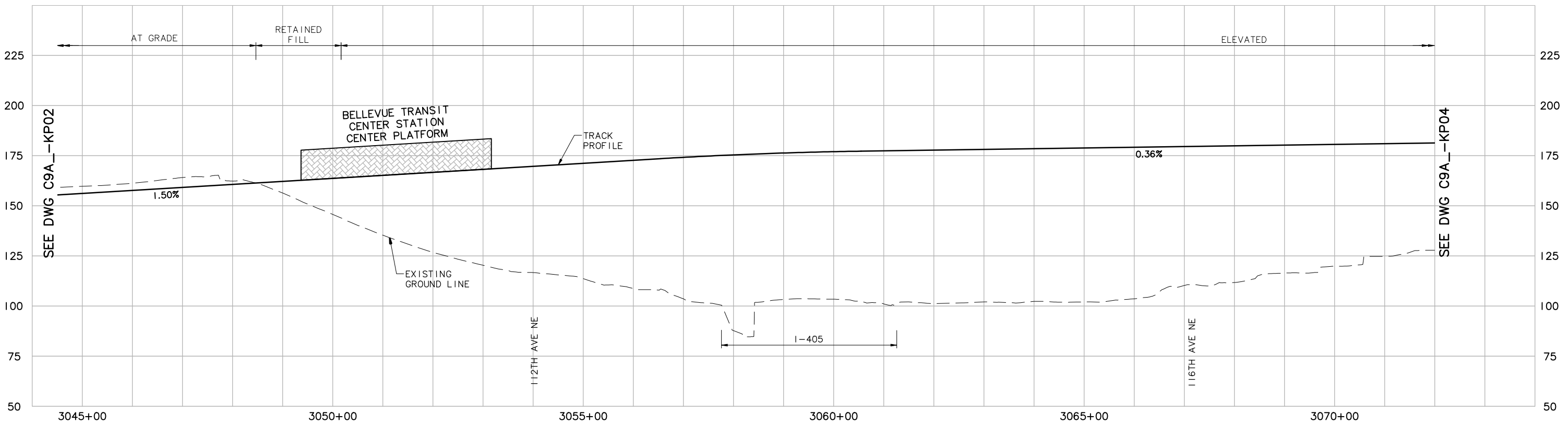
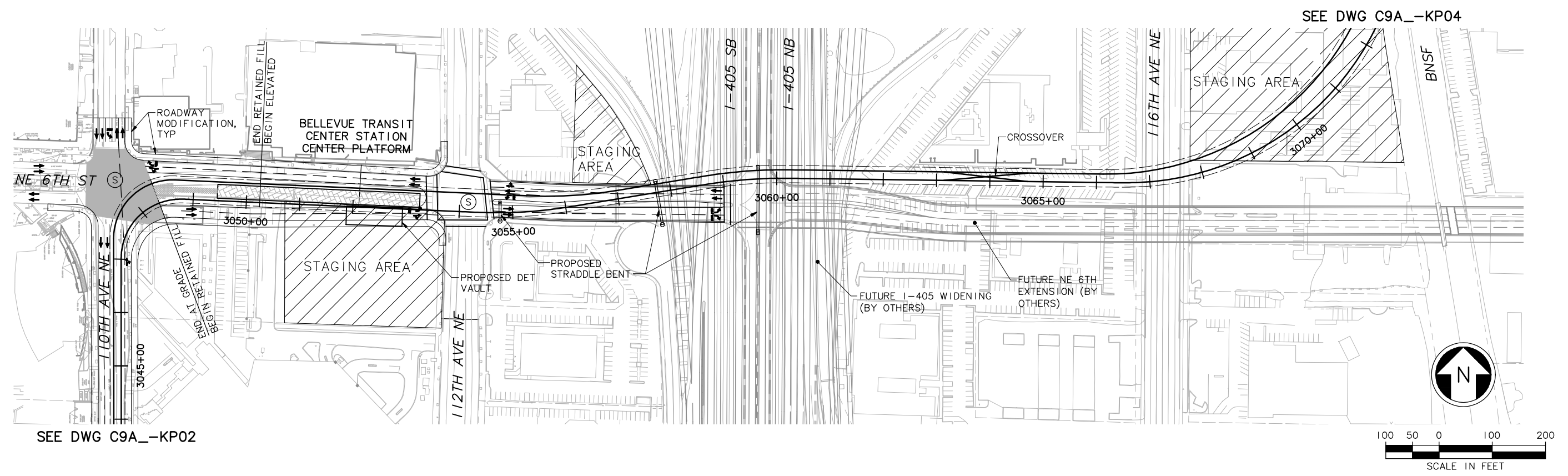
c:\work\feis\segment_c\c9a\ELC_209A_KP02.dwg
 04/14/11 14:28 khuum 0E6585

No.	Date	Dsn.	Chk.	App.	Revisions

Designed By: Drawn By: Checked By: Approved By:	FEIS CONCEPTUAL	CH2MHILL	INCA ENGINEERING INC. BOLIMA DRAFTING & DESIGN INC.	SOUNDTRANSIT	Scale: H: 1"=100'; V: 1"=25'	LINK LIGHT RAIL PROJECT EAST CORRIDOR SEGMENT C - ALT C9A TRACK PLAN & PROFILE	Drawing No.:
					Filename: ELC_209A_KP02.dwg		C9A_-KP02
					Contract No.:		Sheet No.:
					Date: 07/30/10		Rev.:



DWG INFO:
 L1SCALE:
 1"=1'
 XREFs:
 -Attach:
 -Overlaid:
 ELC_C9A_KA-100
 Future-NE6th
 SUB-FE15
 ZG-2234H
 ZG-G10010
 x0228rx
 x0228sf
 x0231rx
 x0231sf
 x0528rx
 x0528sf
 x0531rx
 x0531sf
 x1405_chan
 -Unresolved:



c:\work\feis\segment_c\c9a\ELC_209A_KP03.dwg
 04/14/11 14:40 : khuum 0E6585

No.	Date	Dsn.	Chk.	App.	Revisions

Designed By:
 Drawn By:
 Checked By:
 Approved By:

FEIS CONCEPTUAL

CH2MHILL

INCA ENGINEERING INC.

BOLIMA DRAFTING & DESIGN INC.

SOUNDTRANSIT

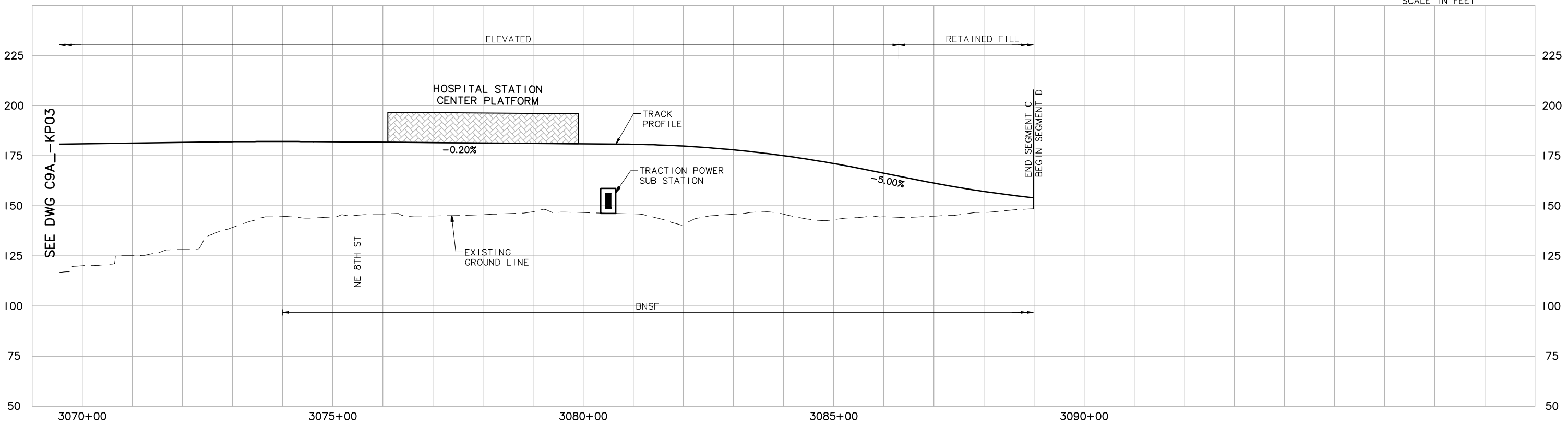
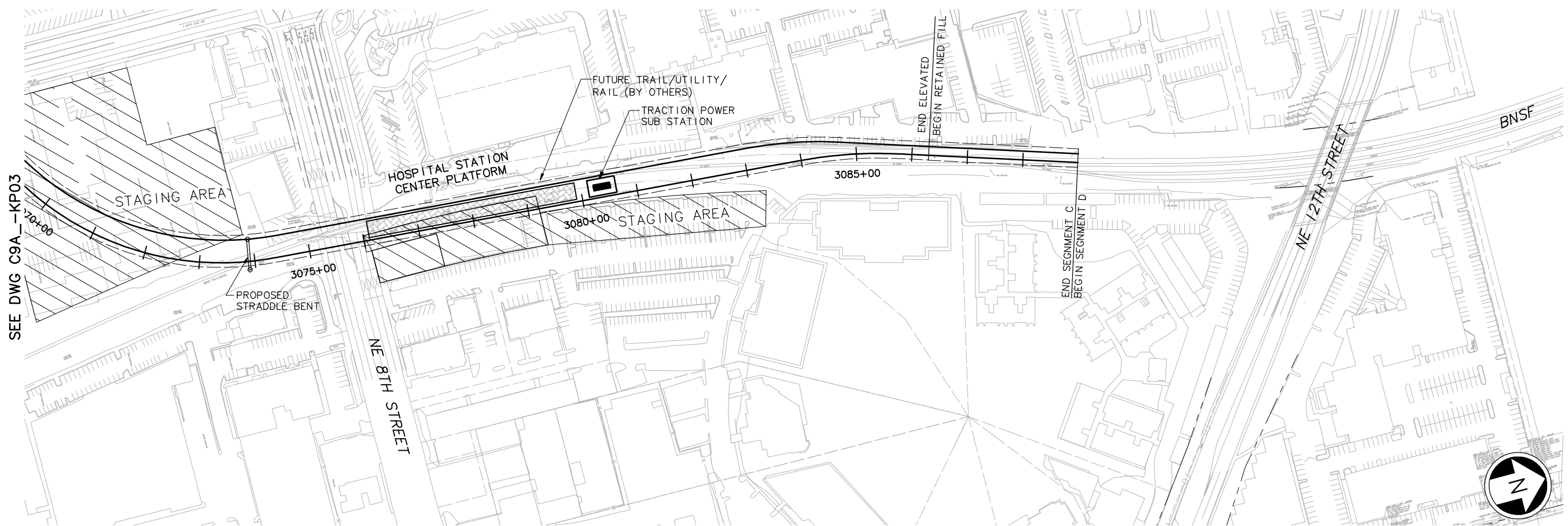
Scale:
 H: 1"=100'; V: 1"=25'
 Filename:
 ELC_209A_KP03.dwg
 Contract No.:

LINK LIGHT RAIL PROJECT
 EAST CORRIDOR
 SEGMENT C - ALT C9A
 TRACK PLAN & PROFILE

07/30/10

Drawing No.:
C9A_KP03
 Sheet No.:
C-167
 Rev.:

DWG. INFO:
 L1SCALE:
 1=1
 XREFs:
 -Attach:
 -Overlay:
 ELC_C9A_KA-100
 ZG-2234H
 ZG-10010
 key_Segment
 x0528sf
 x0531rf
 x0531sf
 x0831rf
 x0831sf
 x0831ut
 x1405_chan
 -Unresolved:



c:\work\feis\segment_c\c9a\ELC_209A_KP04.dwg
 03/18/11 14:54 : khuum 0E6585

No.	Date	Dsn.	Chk.	App.	Revisions

Designed By:	
Drawn By:	
Checked By:	
Approved By:	

FEIS CONCEPTUAL

CH2MHILL

Submitted: _____ Date: _____ Approved: _____ Date: _____

INCA ENGINEERING INC.

BOLIMA DRAFTING & DESIGN INC.

SOUNDTRANSIT

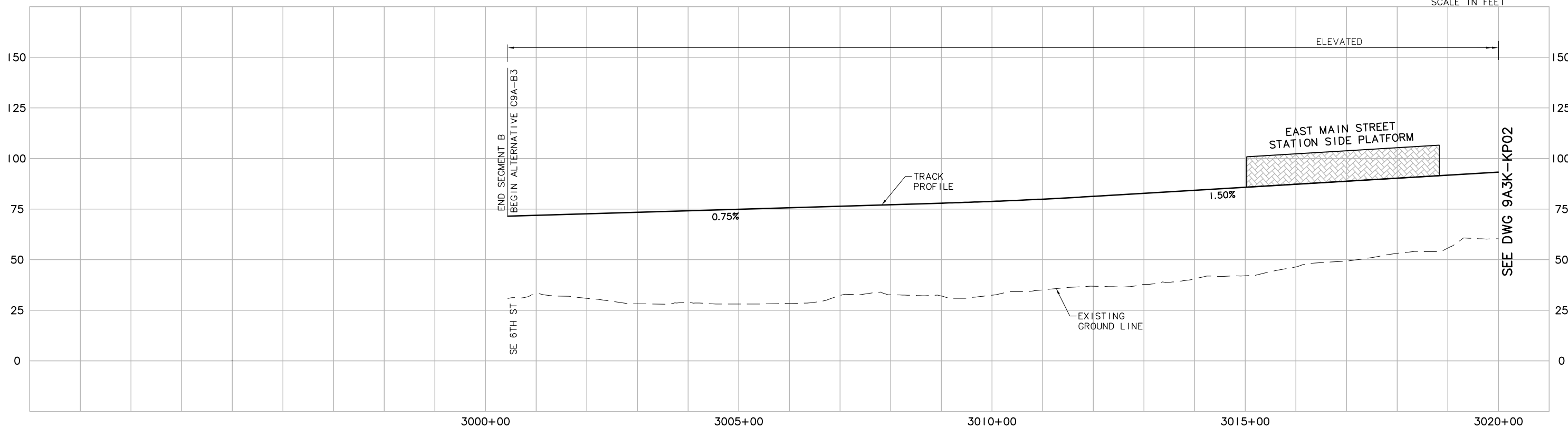
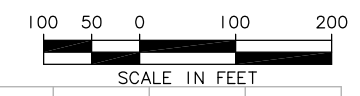
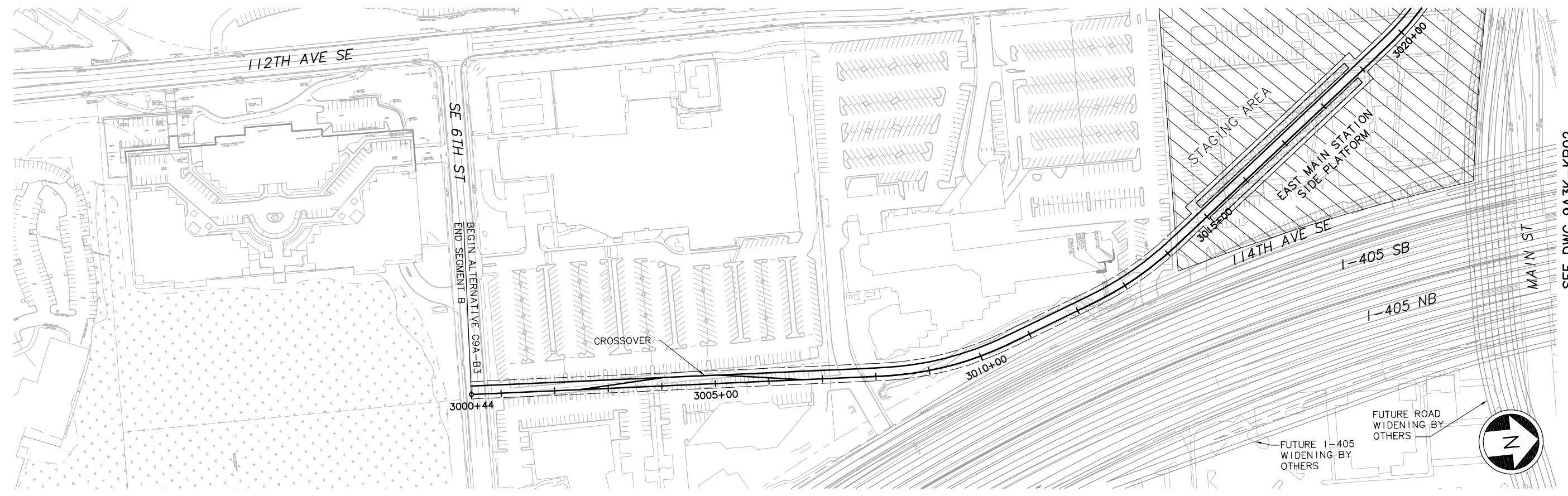
Scale: H: 1"=100'; V: 1"=25'
Filename: ELC_2C9A_KP04.dwg
Contract No.:
Date: 07/30/10

LINK LIGHT RAIL PROJECT
EAST CORRIDOR
SEGMENT C - ALT C9A
TRACK PLAN & PROFILE

Scale: 1/2" = 100'

Drawing No.:	C9A_-KP04
Sheet No.:	C-168
Rev.:	

DWG INFO:
 LTSCALE:
 1=1
 XREFS:
 -Attach:
 -Overlay:
 ELC_C9A_B3_KA-100
 ZG-2234H
 ZG-G10010
 key_Segment
 x0222rf
 x0222rf
 x0522rf
 x0522rf
 x0522rf
 x0522rf
 x0528rf
 x0528rf
 x0531rf
 x1405_chan
 -Unresolved



c:\work\feis\ELC_C9A3KP01.dwg
 02/22/11 16:14 : bolimaf OE6579

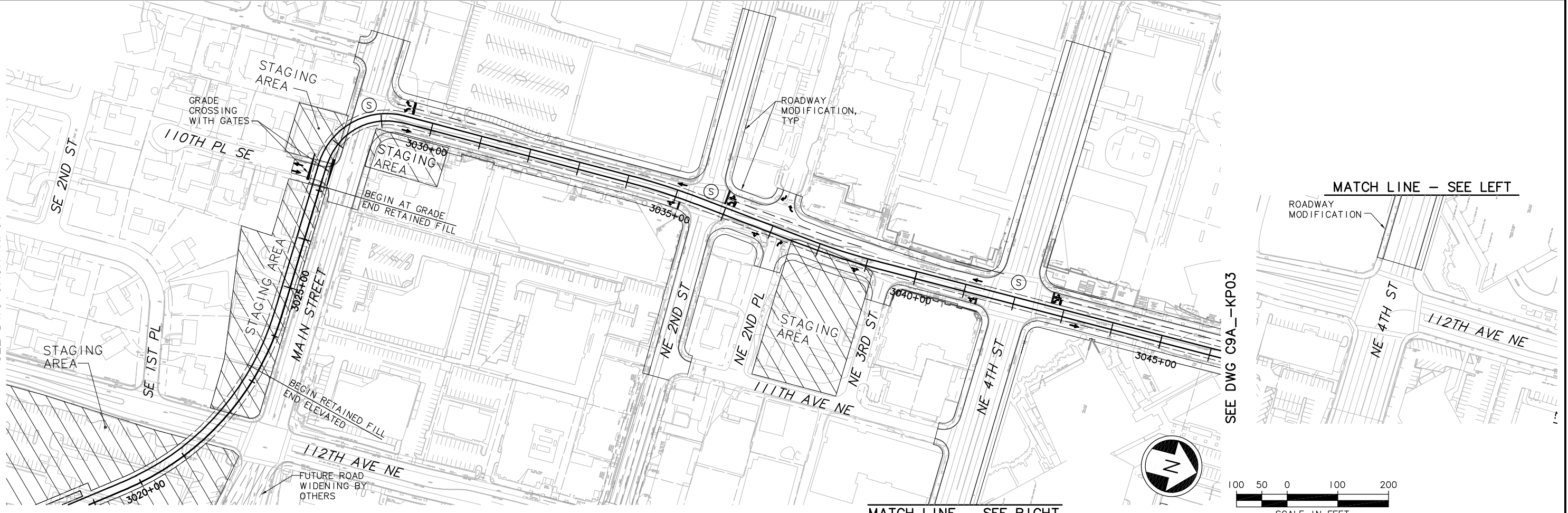
Designed By:					
Drawn By:					
Checked By:					
Approved By:					
No.	Date	Dsn.	Chk.	App.	Revisions

FEIS CONCEPTUAL				Scale: H: 1" = 100'; V: 1" = 25' Filename: ELC_C9A3KP01.dwg Contract No.: Date: 07/30/10	Drawing No.: 9A3K-KP01
		Submitted: _____ Date: _____ Approved: _____ Date: _____		LINK LIGHT RAIL PROJECT EAST CORRIDOR SEGMENT C - ALT C9A FROM B3 TRACK PLAN & PROFILE	Sheet No.: _____ Rev.: _____ C-169

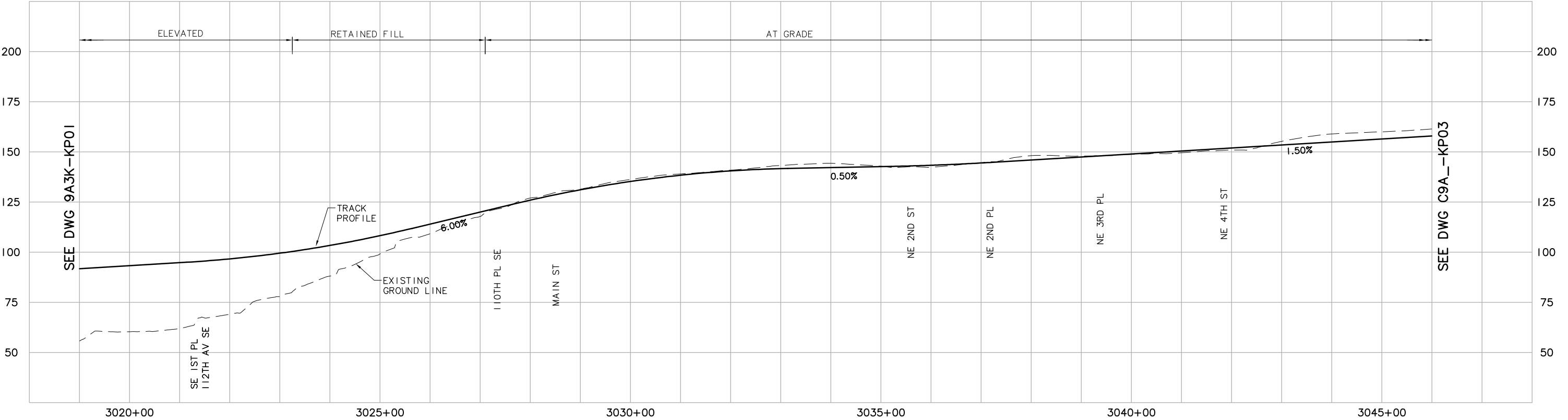
DWG INFO:
 L1SCALE:
 1=1
 XREFs:
 -Attach:
 -Overlay:
 ELC_C9A_B3_KA_100
 ZG-2234H
 ZG-610010
 x0228rx
 x0228rf
 x0525rx
 x0525rf
 x0528rx
 x0528rf
 x1405_chan
 -Unresolved:

SEE DWG 9A3K-KP01

SEE DWG C9A-KP03



MATCH LINE - SEE RIGHT



c:\work\feis\ELC_C9A3KP02.dwg
 02/22/11 16:14: bolimaf 0E6579

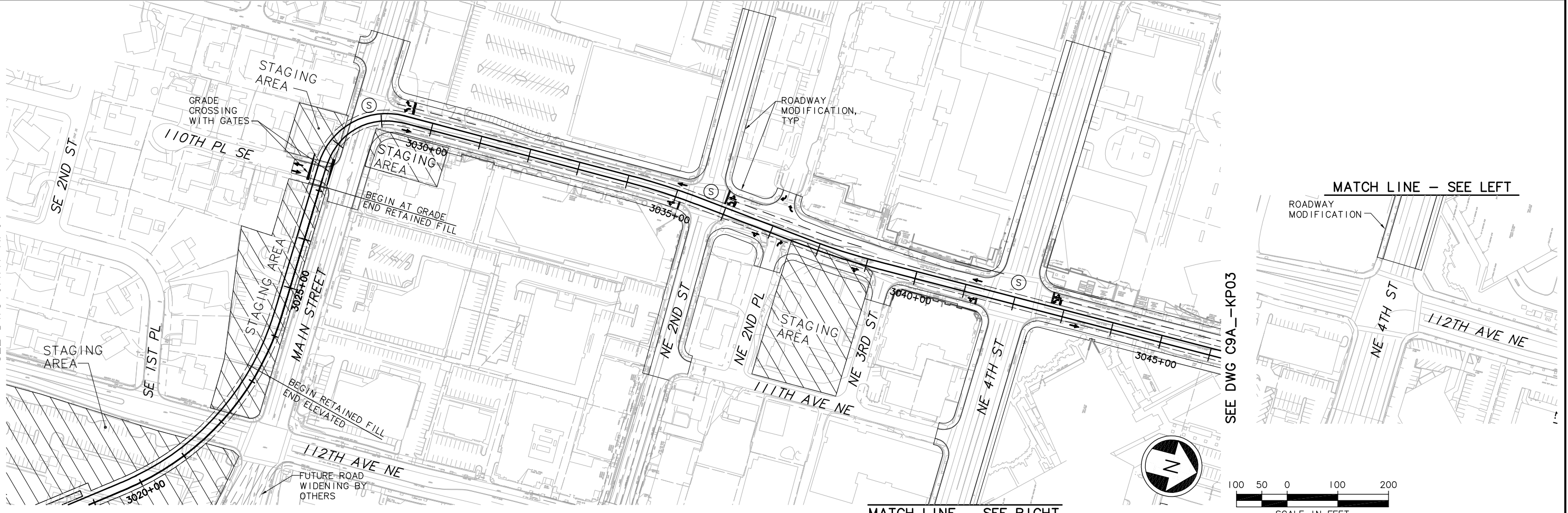
Designed By:	
Drawn By:	
Checked By:	
Approved By:	

FEIS CONCEPTUAL					Scale: H: 1" = 100'; V: 1" = 25' Filename: ELC_C9A3KP02.dwg Contract No.: Date: 07/30/10	LINK LIGHT RAIL PROJECT EAST CORRIDOR SEGMENT C - ALT C9A FROM B3 TRACK PLAN & PROFILE	Drawing No.: 9A3K-KP02
	Submitted:	Date:	Approved:	Date:		Sheet No.: C-170	

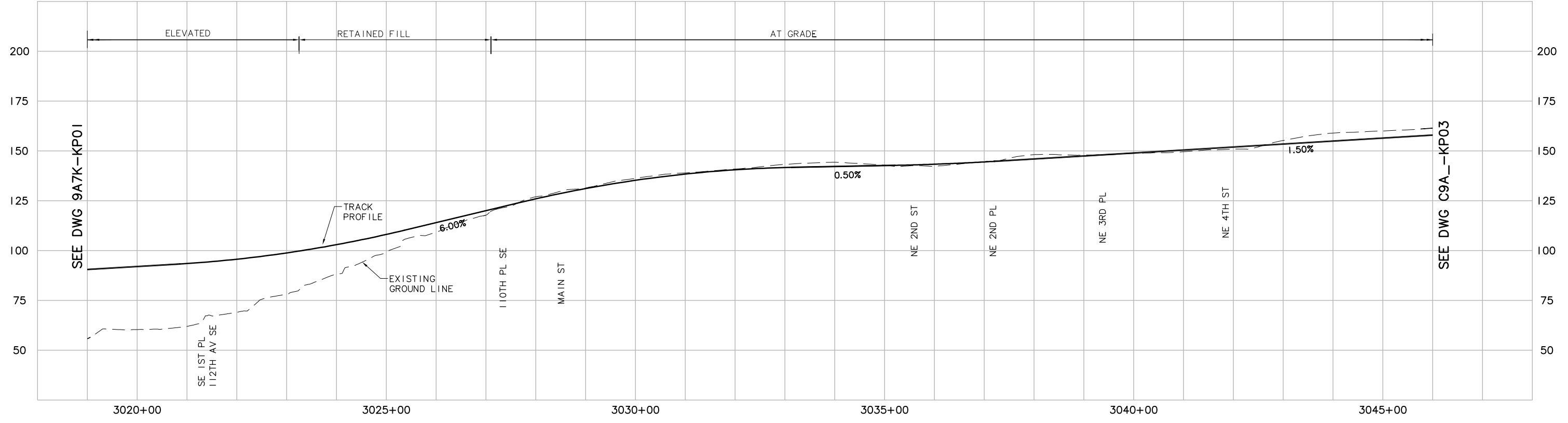
DWG INFO:
 L1SCALE:
 1=1
 XREFs:
 -Attach:
 -Overlay:
 ELC_C9A_B7_KA_100
 ZC-2234H
 ZC-610010
 x0228r
 x0228f
 x0525r
 x0525f
 x0528r
 x0528f
 x1405_cha
 -Unresolved:

SEE DWG 9A7K-KP01

SEE DWG C9A-KP03



MATCH LINE - SEE RIGHT



c:\work\feis\ELC_C9A7KP02.dwg
 02/22/11 16:16 : bolimaf 0E6579

Designed By:	
Drawn By:	
Checked By:	
Approved By:	

FEIS CONCEPTUAL

CH2MHILL

INCA ENGINEERS INC.

BOLIMA DRAFTING & DESIGN INC.

SOUNDTRANSIT

Scale:
 H: 1" = 100'; V: 1" = 25'
 Filename:
 ELC_C9A7KP02.dwg
 Contract No.:

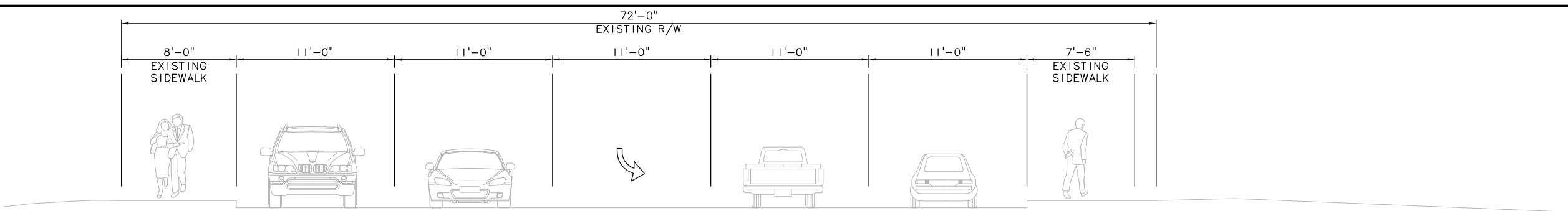
LINK LIGHT RAIL PROJECT
EAST CORRIDOR
 SEGMENT C - ALT C9A FROM B7
TRACK PLAN & PROFILE

Drawing No.:
9A7K-KP02
 Sheet No.:
C-172
 Rev.:

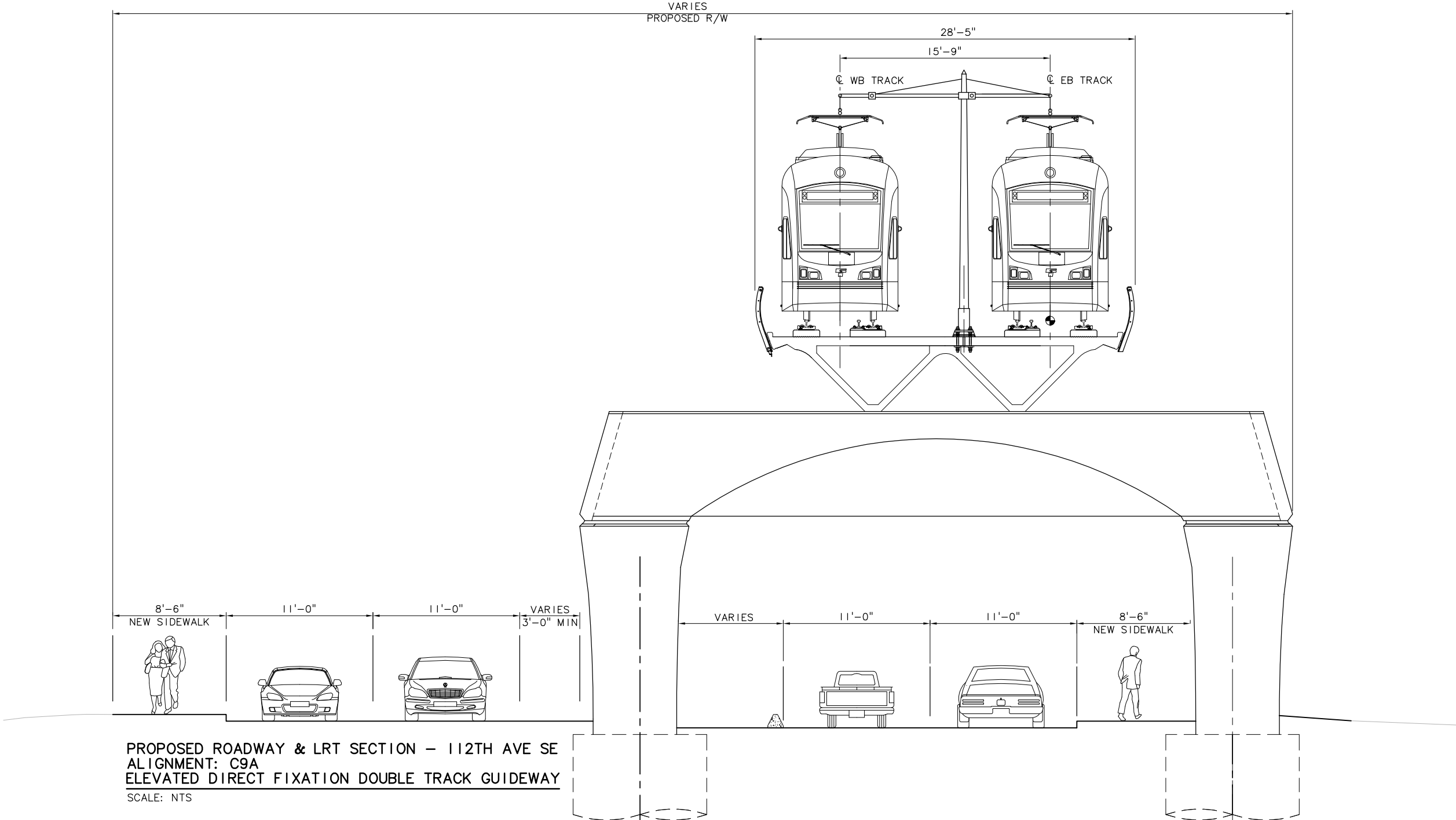
No.	Date	Dsn.	Chk.	App.	Revisions



DWG INFO:
 L1SCALE:
 1=1
 XREFs:
 -Attach:
 -Overlay:
 SUB-SDE IS
 20-2234H
 -Unresolved:



EXISTING ROADWAY SECTION - 112TH AVE SE (AT RED LION HOTEL)
 SCALE: NTS



PROPOSED ROADWAY & LRT SECTION - 112TH AVE SE
 ALIGNMENT: C9A
 ELEVATED DIRECT FIXATION DOUBLE TRACK GUIDEWAY
 SCALE: NTS

c:\work\sdeis\ELC_209A_KX01.dwg
 10/04/10 14:07 : bolimaf OE6579

No.	Date	Dsn.	Chk.	App.	Revisions

Designed By:
 Drawn By:
 Checked By:
 Approved By:

FEIS CONCEPTUAL

CH2MHILL

Submitted: _____ Date: _____ Approved: _____

INCA ENGINEERS INC.

BOLIMA DRAFTING & DESIGN INC.

Approved: _____ Date: _____

SOUNDTRANSIT

Date: _____

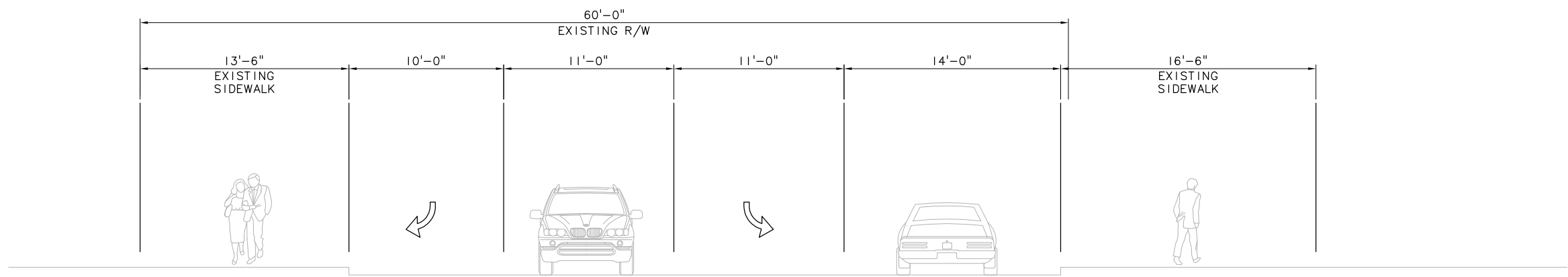
Scale: NTS
 Filename: ELC_209A_KX01.dwg
 Contract No.:
 Date: 07/30/10



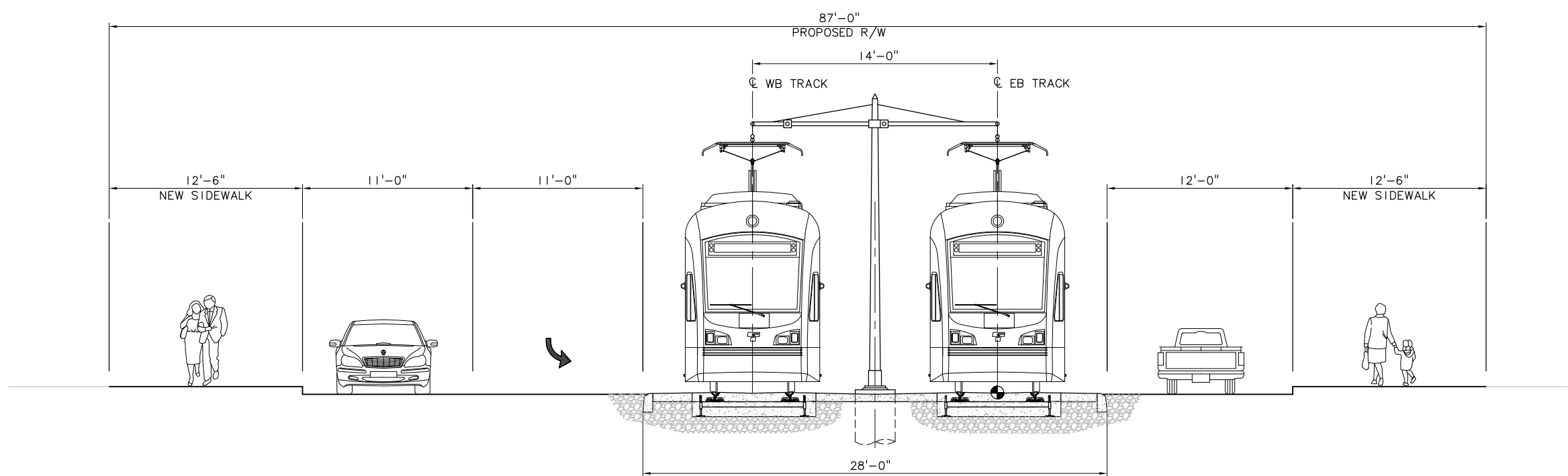
LINK LIGHT RAIL PROJECT
 EAST CORRIDOR
 SEGMENT C - ALT C9A
 TYPICAL SECTION
 112TH AVE SE
 AT RED LION HOTEL

Drawing No.: C9A_-KX01
 Sheet No.: C-173
 Rev.:

DWG INFO:
 L1SCALE:
 1=1
 XREFs:
 -Attach:
 -Overlay:
 SUB-SDEIS
 20-2234H
 -Unresolved:



EXISTING ROADWAY SECTION - 110TH AVE NE (NE 4TH ST TO NE 6TH ST)
 SCALE: NTS



PROPOSED ROADWAY & LRT SECTION - 110TH AVE NE
 ALIGNMENT: C9A
 AT GRADE EMBEDDED DOUBLE TRACK GUIDEWAY
 SCALE: NTS

c:\work\sdeis\ELC_2C9A_KX02.dwg
 10/04/10 14:07 : bolimaf_0E6579

No.	Date	Dsn.	Chk.	App.	Revisions

Designed By:
 Drawn By:
 Checked By:
 Approved By:

FEIS CONCEPTUAL

CH2MHILL

Submitted: _____ Date: _____ Approved: _____

INCA ENGINEERS INC.

BOLIMA DRAFTING & DESIGN INC.

Date: _____ Approved: _____

SOUNDTRANSIT

Date: _____

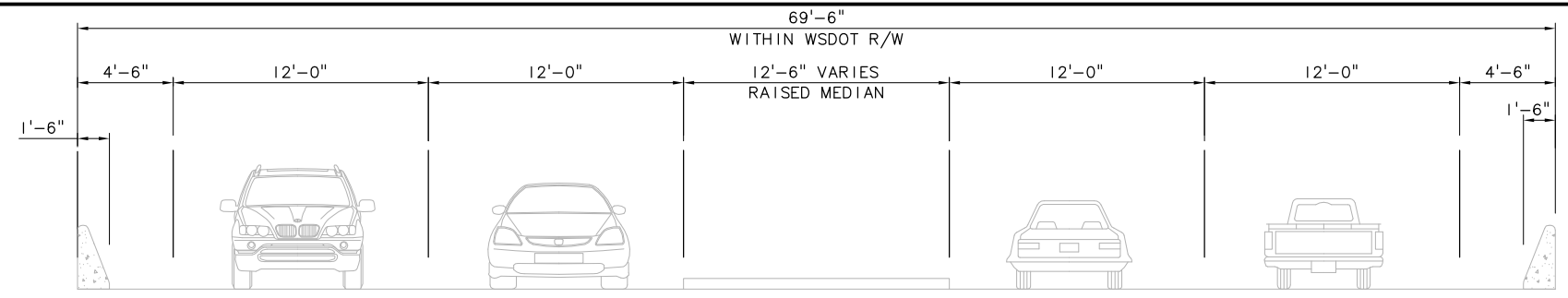
Scale: NTS
 Filename: ELC_2C9A_KX02.dwg
 Contract No.:
 Date: 07/30/10



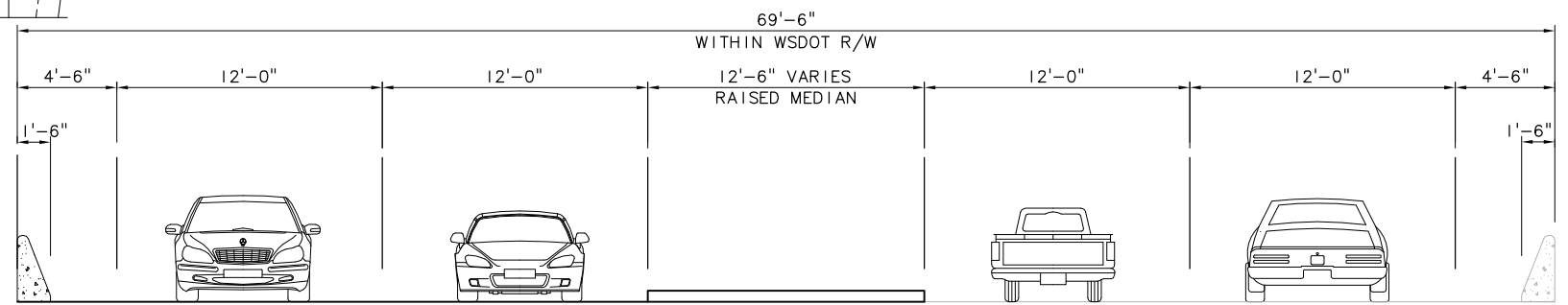
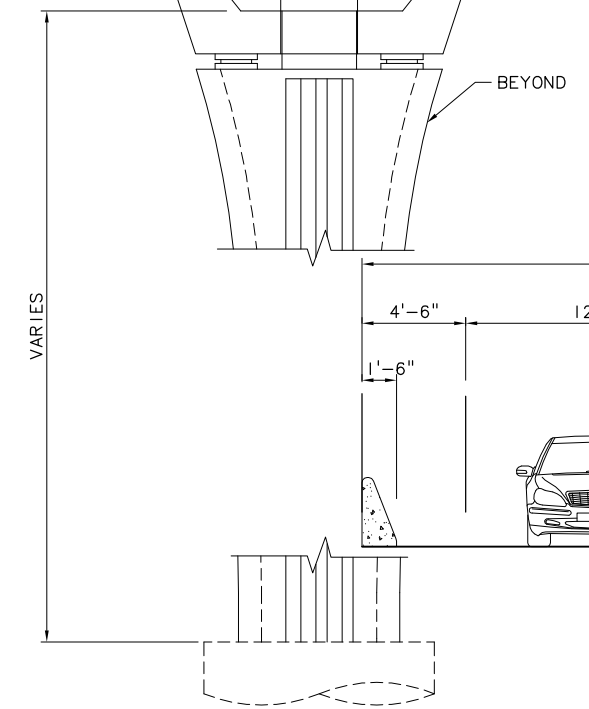
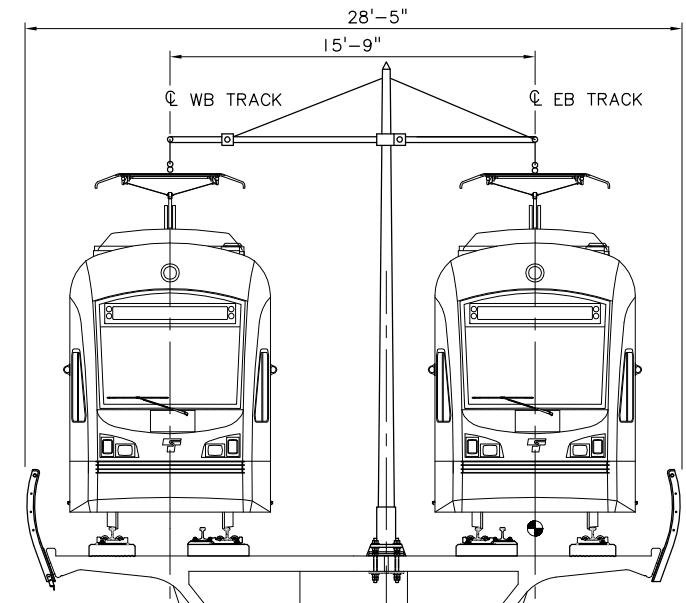
LINK LIGHT RAIL PROJECT
 EAST CORRIDOR
 SEGMENT C - ALT C9A
 TYPICAL SECTION
 110TH AVE NE
 NE 4TH ST TO NE 6TH ST

Drawing No.: C9A_-KX02
 Sheet No.: _____ Rev.: _____
C-174

DWG INFO:
 L1SCALE:
 1=1
 XREFS:
 -Attach:
 -Overlay:
 SUB-SDE1S
 20-2234H
 -Unresolved:



EXISTING ROADWAY SECTION - NE 6TH ST (112TH AVE NE TO I-405)
 SCALE: NTS



**PROPOSED LRT SECTION - NE 6TH ST
 ALIGNMENT: C9A
 ELEVATED DIRECT FIXATION DOUBLE TRACK GUIDEWAY**
 SCALE: NTS

c:\work\sde1s\ELC_2C9A_KX03.dwg
 10/04/10 14:07 : bolimaf OE6579

No.	Date	Dsn.	Chk.	App.	Revisions

Designed By:
 Drawn By:
 Checked By:
 Approved By:

FEIS CONCEPTUAL

CH2MHILL

INCA ENGINEERS INC.

BOLIMA DRAFTING & DESIGN INC.

SOUNDTRANSIT

Scale: NTS
 Filename: ELC_2C9A_KX03.dwg
 Contract No.:
 Date: 07/30/10

LINK LIGHT RAIL PROJECT
 EAST CORRIDOR
 SEGMENT C - ALT C9A
 TYPICAL SECTION
 NE 6TH ST
 112TH AVE NE TO I-405

Drawing No.: C9A_-KX03
 Sheet No.:
 Rev.:
C-175

A B C D E F G H

80'-0"
BNSF EXISTING R/W

70'-0"
EXISTING R/W

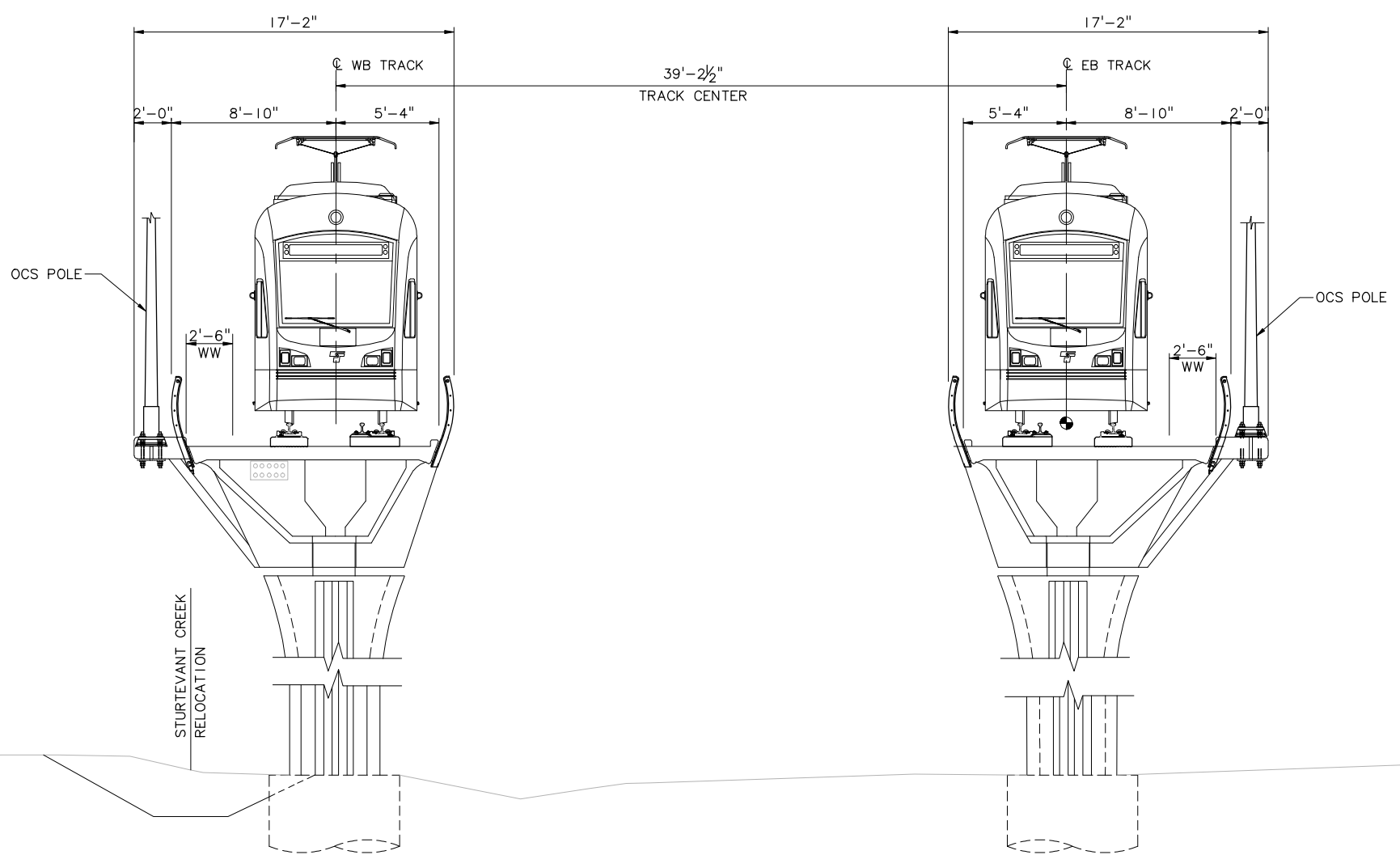
DWG. INFO:
LTSKALE:
1=1
XREFs:
-Attach:
20-2234H
-Dwglog:
-Unresolved:

EXISTING STURTEVANT CREEK

EXISTING
PARKING LOT

EXISTING TYPICAL SECTION – BNSF CORRIDOR (JUST NORTH OF HOSPITAL STATION)
SCALE: NTS

150'-0"
PROPOSED R/W



VARIES 20'-0" MIN
FUTURE TRAIL
UTILITY/RAIL
(BY OTHERS)

STURTEVANT CREEK
RELOCATION

PROPOSED LRT SECTION – BNSF
ALIGNMENT: C9A
ELEVATED DIRECT FIXATION SINGLE TRACK GUIDEWAY
SCALE: NTS

c:\work\feis\segment_c\c9a\ELC_209A_KX04.dwg
05/09/11 15:17 : khuum 0E6585

No.	Date	Dsn.	Chk.	App.	Revisions

Designed By:
Drawn By:
Checked By:
Approved By:

FEIS CONCEPTUAL

CH2MHILL

INCA ENGINEERING INC.

BOLIMA DRAFTING & DESIGN INC.

SOUNDTRANSIT

Scale: NTS
Filename: ELC_2C9A_KX04.dwg
Contract No.:
Date: 07/30/10

LINK LIGHT RAIL PROJECT
EAST CORRIDOR
SEGMENT C – ALT C9A
TYPICAL SECTION
BNSF CORRIDOR

Drawing No.: C9A_-KX04
Sheet No.:
Rev.:
C-176



XREF'S
Resolved
ELC_BMEE_01
ELC_BMEE_AP
ELC_BMEE_AS
ELC_C7E_CM
ELC_C7E_J0
ELC_C7E_KA
Z0-2234H
x0525cn
x0525rx
x0525sf
x0528cn
x0528rx
x0528sf

Unresolved
ELC_C4A_KA
ELC_C8E_KA

LTSKALE
1"=1'

NOTES

1. ALIGNMENT C9T

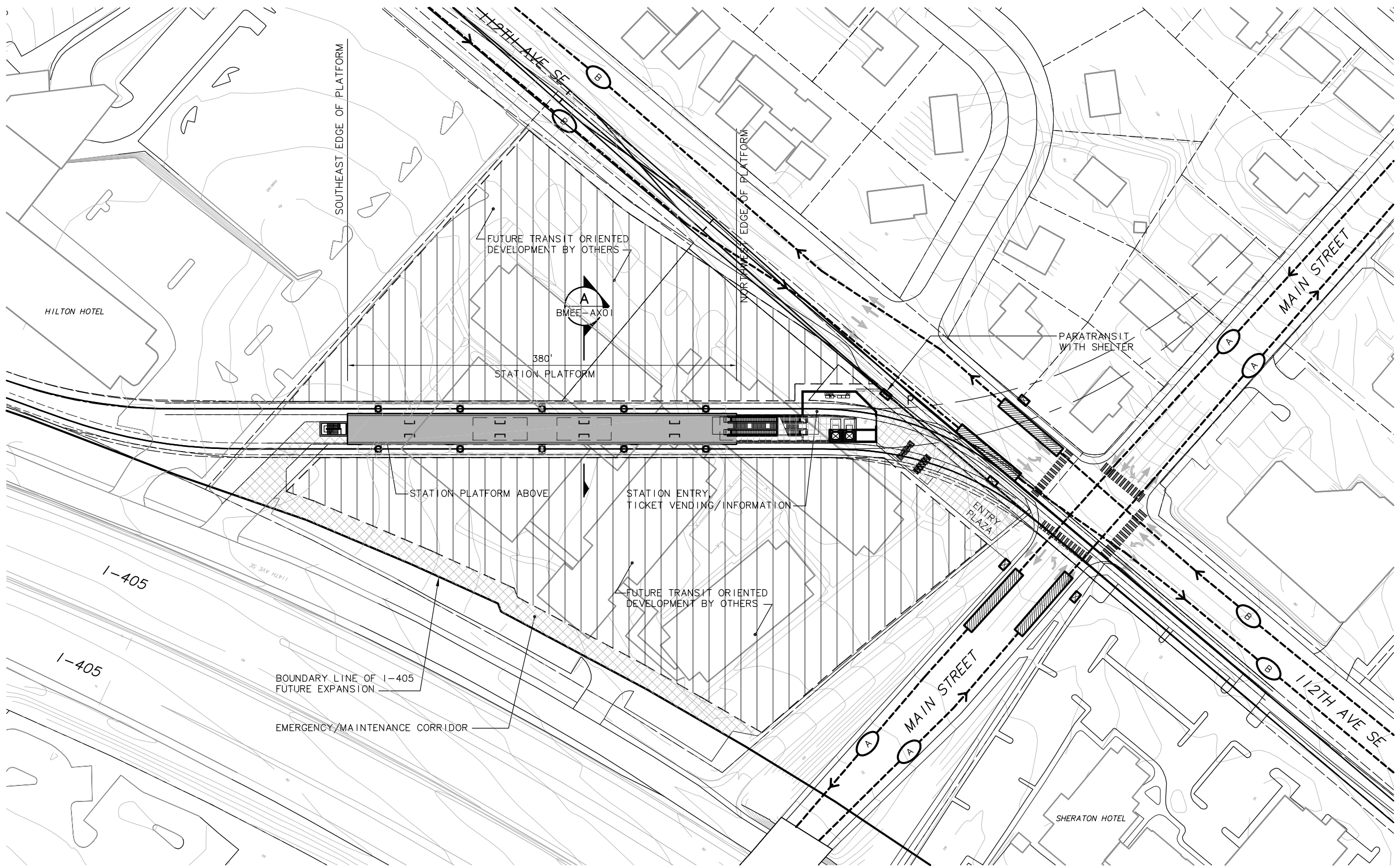
SYMBOLS KEY

- NEW BUS STOP
- EXISTING BUS STOP
- BUS LAYOVER
- PARATRANSIT SHELTER
- PARATRANSIT STOP
- BUS ROUTE
- 240
243
342
- BIKE PARKING: CLASS 1
- BIKE PARKING: CLASS 2
- CROSSWALK
- NEW LANDSCAPE
- NEW WALKS
- NEW PLAZA
- TRACK



STATION AREA PLAN

SCALE: 1" = 50'



c:\work\sdeis\ELC_IBMEAS01.dwg
08/17/10 09:12 : BOLIMAF OE6579

No.	Date	Dsn.	Chk.	App.	Revisions

Designed By:	
Drawn By:	
Checked By:	
Approved By:	

FEIS CONCEPTUAL

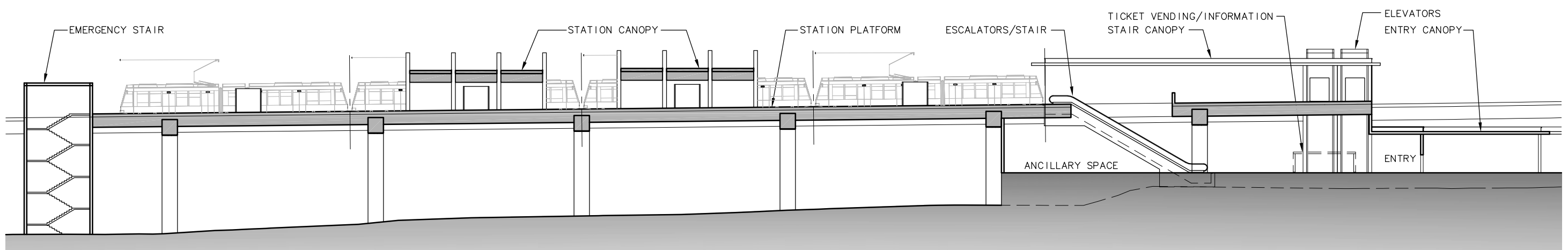
IBI Group
801 Second Avenue - Suite 1400
Seattle WA 98104 1576 USA
tel 206.521.9091
fax 206.521.9085

Scale:	1"=50'
Filename:	ELC_IBMEAS01.dwg
Contract No.:	
Date:	07/30/10

LINK LIGHT RAIL PROJECT
EAST CORRIDOR
SEGMENT C - ALT C9A
EAST MAIN STATION
STATION AREA PLAN

Drawing No.:	BMEA-AS01
Sheet No.:	C-177
Rev.:	

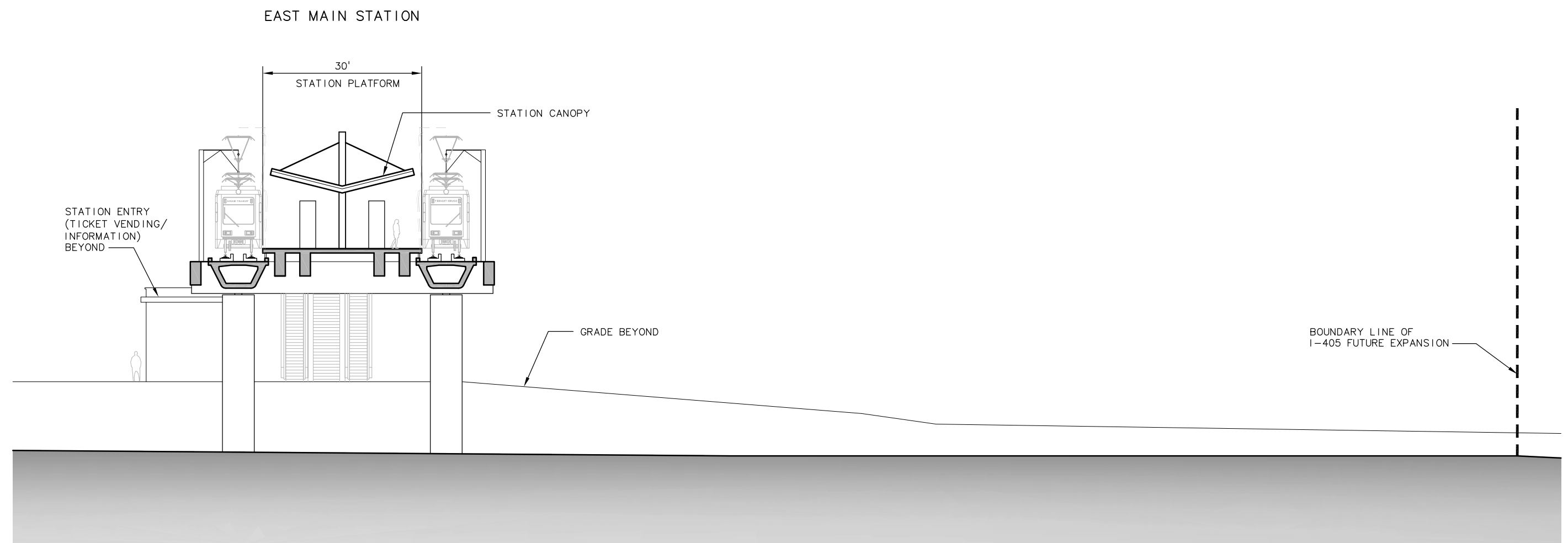
1
XREF'S
Resolved
ELC_BMEE
ZG-2234H
Unresolved
LTSCALE
1=1
2



ELEVATION
SCALE: 1" = 20'

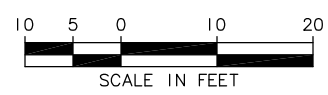


3
4
5



SECTION LOOKING NORTH
SCALE: 1" = 10'

A
BMEE-AX01
BMEE-AS01



c:\work\sdets\ELC_IBMEAX01.dwg
08/17/10 09:13 : BOLIMAF OE6579

No.	Date	Dsn.	Chk.	App.	Revisions

Designed By:
Drawn By:
Checked By:
Approved By:

FEIS CONCEPTUAL

CH2MHILL

IBI GROUP

IBI Group
801 Second Avenue - Suite 1400
Seattle WA 98104 1576 USA

tel 206.521.9091
fax 206.521.9085

SOUNDTRANSIT

Scale: AS NOTED
Filename: ELC_IBMEAX01.dwg
Contract No.:
Date: 07/30/10

LINK LIGHT RAIL PROJECT
EAST CORRIDOR
SEGMENT C - ALT C9A
EAST MAIN STATION
SITE SECTIONS

THIS PRINT REPRESENTS HALF SCALE

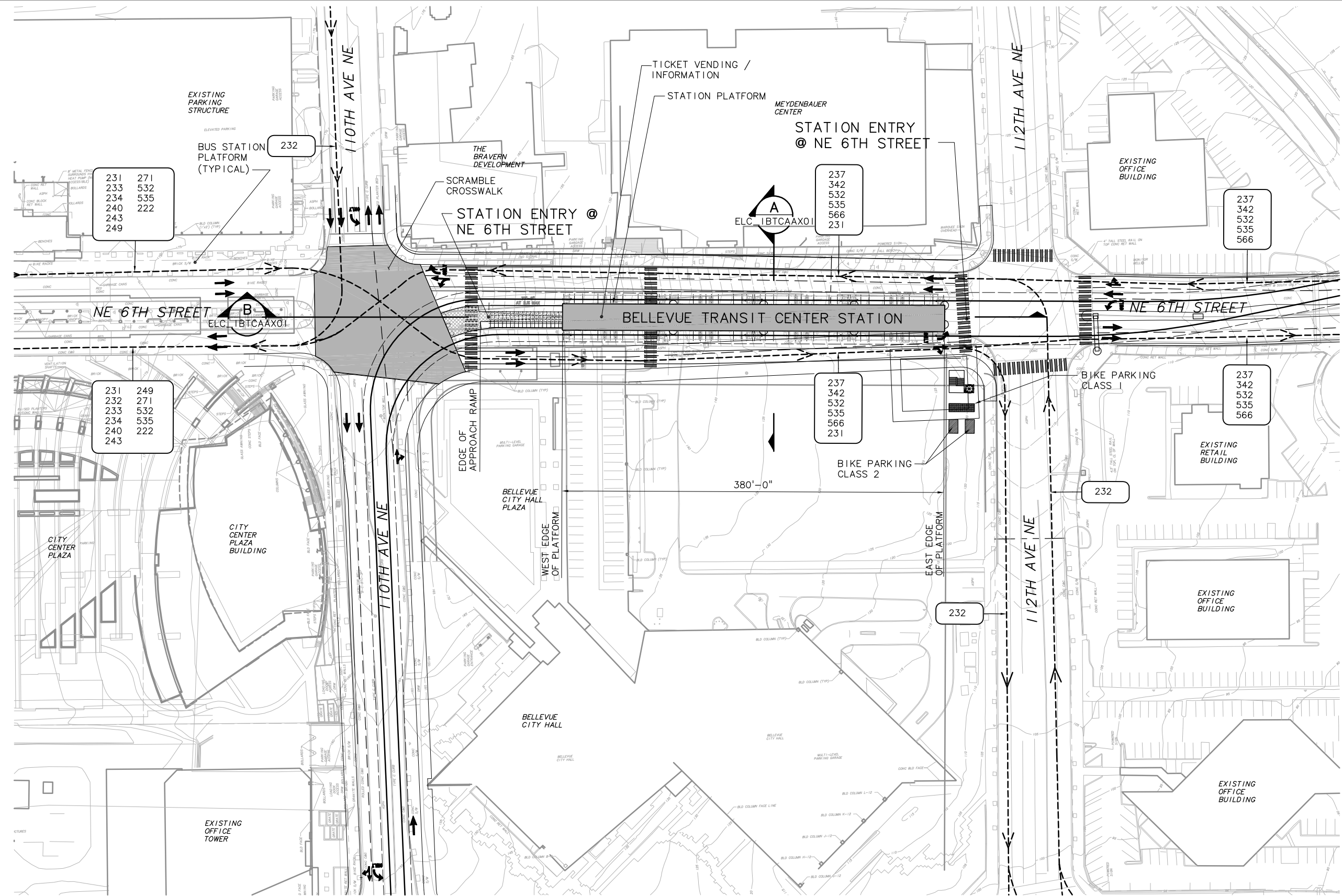
Drawing No.: BME-AX01
Sheet No.:
Rev.:
C-178

DWG INFO:
 L1SCALE:
 1"=1'
 XREFS:
 -Attach:
 -Overlay:
 City_Center_Plaza
 ELC1N11_AS_400
 ELC_C9A_KA_100
 ZG-2234H
 x0228cn
 x0228br
 x0228ef
 x0528cn
 x0528br
 x0528ef
 -Unresolved:

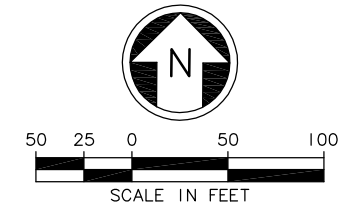
NOTES
 1. ALIGNMENT C9A

SYMBOLS KEY

	NEW BUS STOP
	EXISTING BUS STOP
	BUS LAYOVER
	PARATRANSIT SHELTER
	PARATRANSIT STOP
	BUS ROUTE
	BIKE PARKING: CLASS 1
	BIKE PARKING: CLASS 2
	CROSSWALK
	NEW LANDSCAPE
	NEW WALKS
	NEW PLAZA
	TRACK



STATION AREA PLAN
 SCALE: 1" = 50'



c:\work\feis\ELC_IBTCAAS01.dwg
 02/22/11 16:03 : bolimaf OE6579

Designed By:					
Drawn By:					
Checked By:					
Approved By:					
No.	Date	Dsn.	Chk.	App.	Revisions

Submitted: _____ Date: _____
 Approved: _____ Date: _____

FEIS CONCEPTUAL

CH2MHILL

HEWITT

SOUNDTRANSIT

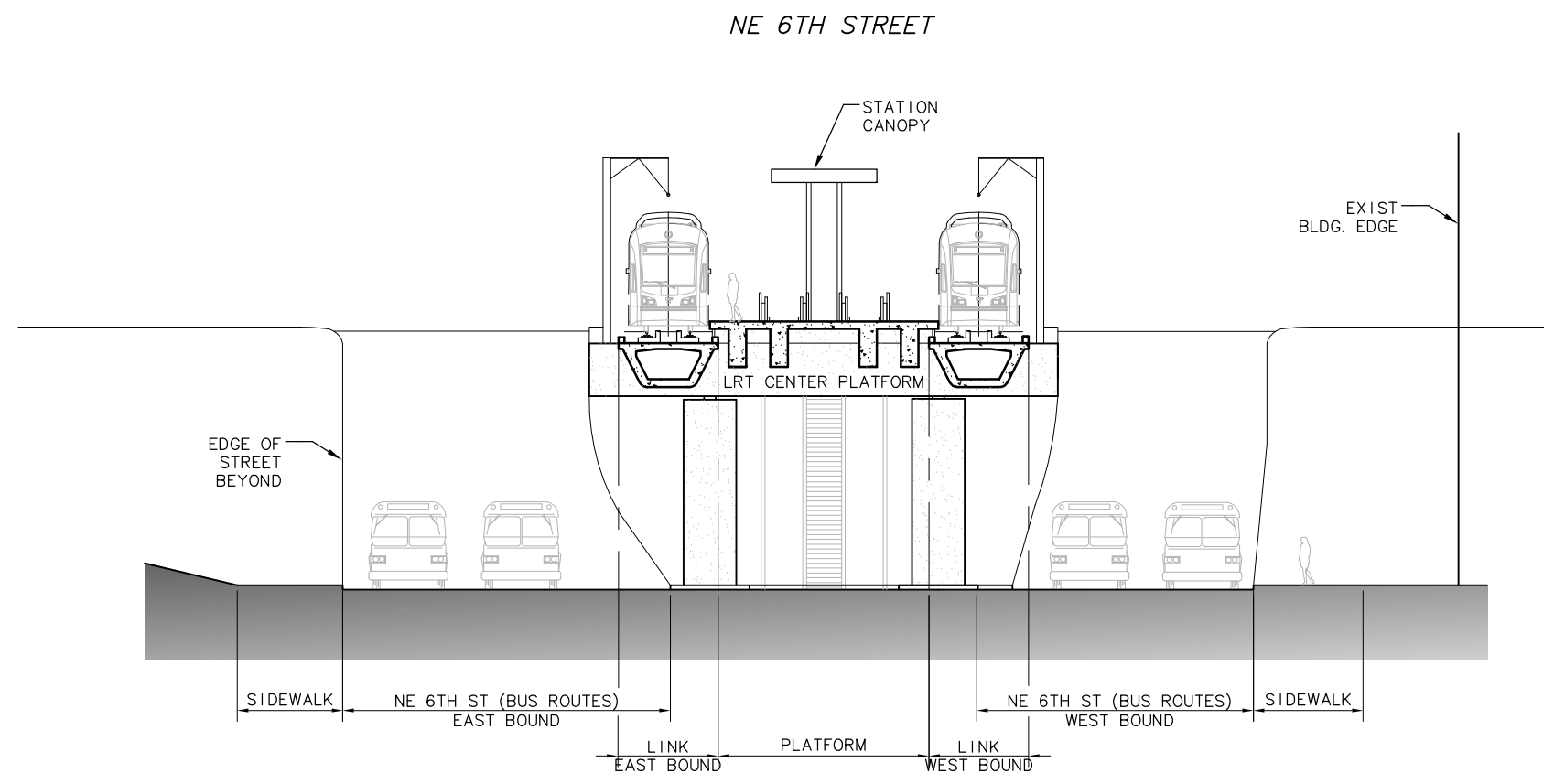
Scale: 1"=50'
 Filename: ELC_IBTCAAS01.dwg
 Contract No.:
 Date: 07/30/10

LINK LIGHT RAIL PROJECT
 EAST CORRIDOR
 SEGMENT C - ALT C9A
 BTC STATION
 STATION AREA PLAN
 DESIGN OPTION

Drawing No.: BTCA-AS01
 Sheet No.: C-179
 Rev.:

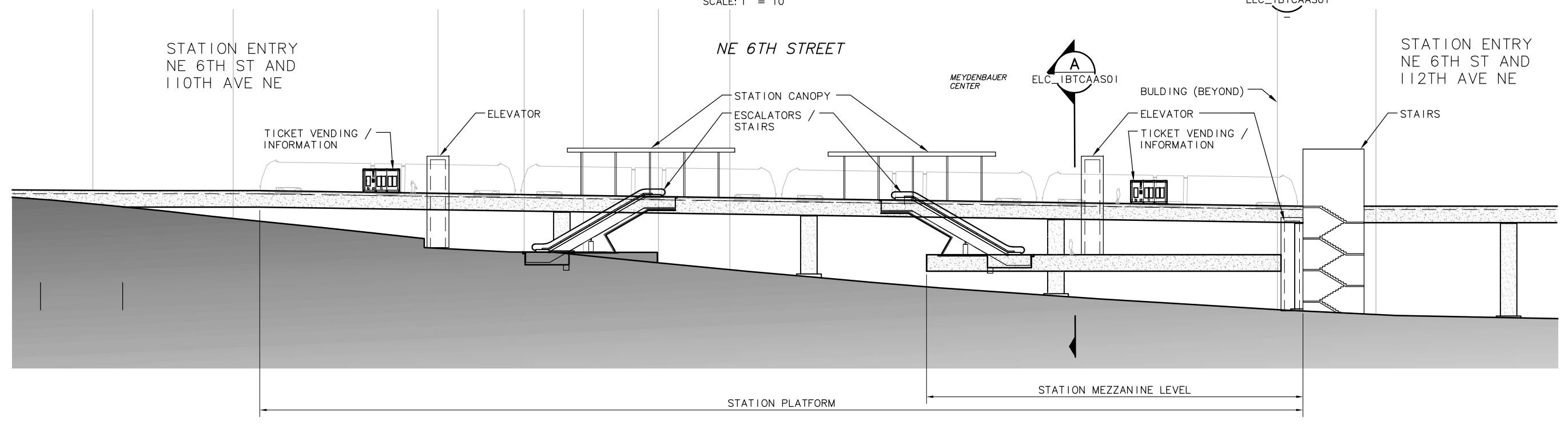
XREF'S
 Resolved
 ELC1111_A.410
 SUB-SDE1S
 ZG-2234H
 Unresolved

LTSKALE
 1=1



SECTION
 SCALE: 1" = 10'

A
 ELC_IBTCAAS01



SECTION
 SCALE: 1" = 20'

B
 ELC_IBTCAAS01



c:\work\sde1s\ELC_IBTCAAX01.dwg
 08/17/10 09:14 : BOLIMAF OE6579

No.	Date	Dsn.	Chk.	App.	Revisions

Designed By:
 Drawn By:
 Checked By:
 Approved By:

FEIS
 CONCEPTUAL

CH2MHILL

HEWITT

Submitted: Date: Approved: Date:

SOUNDTRANSIT

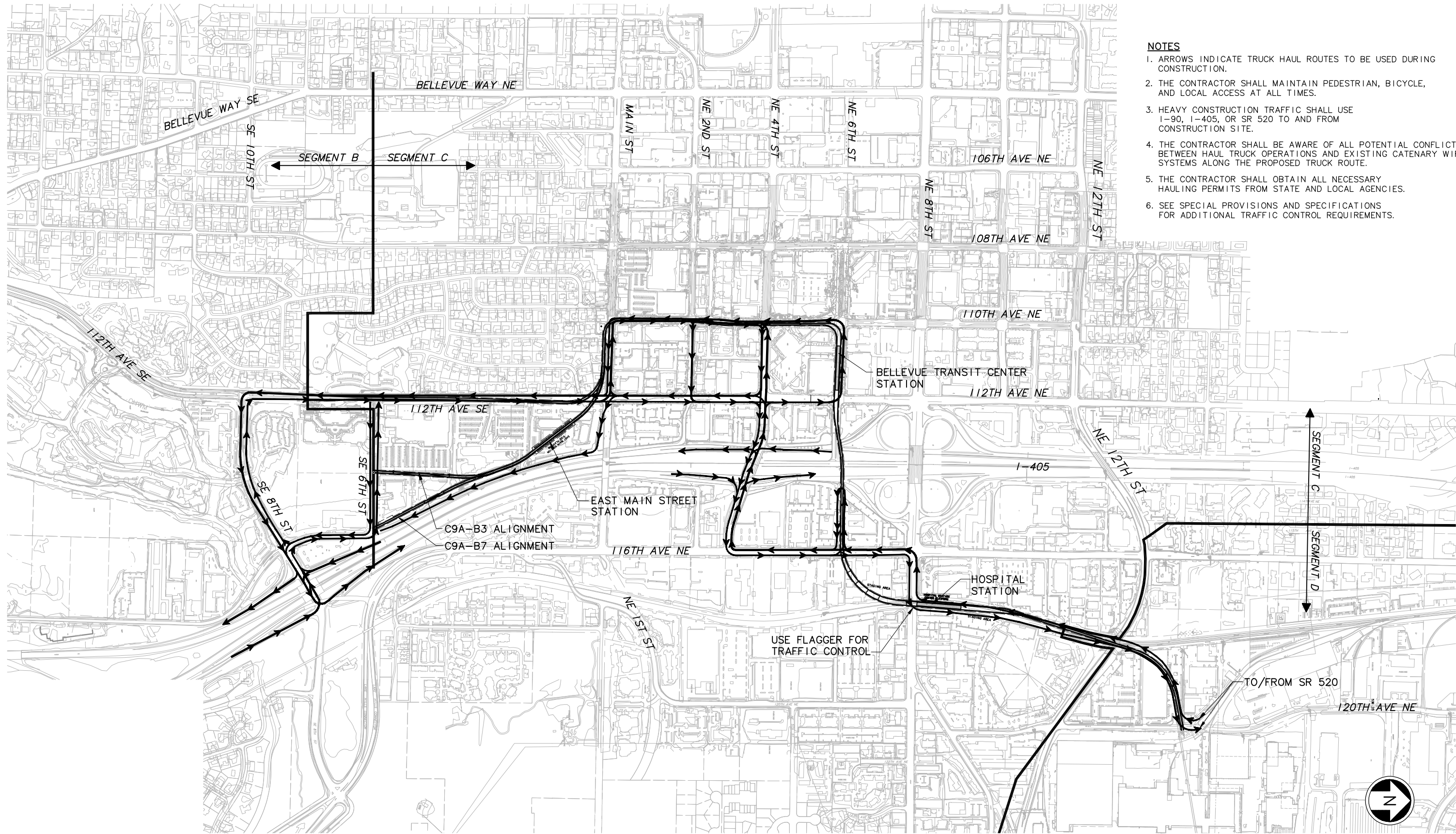
Scale: AS NOTED
 Filename: ELC_IBTCAAX01.dwg
 Contract No.:
 Date: 07/30/10

LINK LIGHT RAIL PROJECT
 EAST CORRIDOR
 SEGMENT C - ALT C9A
 BTC STATION
 SITE SECTIONS

Scale: AS NOTED
 Filename: ELC_IBTCAAX01.dwg
 Contract No.:
 Date: 07/30/10

Drawing No.: BTCA-AX01
 Sheet No.: Rev.:
C-180

DWG. INFO:
 LITSCALE:
 1"=1'
 XREFs:
 -Attach:
 -Overlaid:
 ELC_C9A_KA-100
 ELC_L75_KA
 ZG-2234H
 x0222r
 x0222sf
 x0222sr
 x0228r
 x0228sf
 x0231r
 x0231sf
 x0231sr
 x0252r
 x0252sf
 x0252sr
 x0258r
 x0258sf
 x0258sr
 x0282r
 x0282sf
 x0282sr
 x0311r
 x0311sf
 x0311sr
 x0344r
 x0344sf
 x0344sr
 x0825r
 x0825sf
 x0825sr
 x0831r
 x0831sf
 x0831sr
 x0834r
 x0834sf
 x0834sr
 -Unresolved:
 ELC_L65_KA-1
 ELC_L71_KA
 SUB-FEIS



- NOTES**
1. ARROWS INDICATE TRUCK HAUL ROUTES TO BE USED DURING CONSTRUCTION.
 2. THE CONTRACTOR SHALL MAINTAIN PEDESTRIAN, BICYCLE, AND LOCAL ACCESS AT ALL TIMES.
 3. HEAVY CONSTRUCTION TRAFFIC SHALL USE I-90, I-405, OR SR 520 TO AND FROM CONSTRUCTION SITE.
 4. THE CONTRACTOR SHALL BE AWARE OF ALL POTENTIAL CONFLICTS BETWEEN HAUL TRUCK OPERATIONS AND EXISTING CATENARY WIRE SYSTEMS ALONG THE PROPOSED TRUCK ROUTE.
 5. THE CONTRACTOR SHALL OBTAIN ALL NECESSARY HAULING PERMITS FROM STATE AND LOCAL AGENCIES.
 6. SEE SPECIAL PROVISIONS AND SPECIFICATIONS FOR ADDITIONAL TRAFFIC CONTROL REQUIREMENTS.

c:\as\mkr\my documents\eastlink\environmental planning\feis\ELC_C9A_CC01.dwg
 06/23/11 09:30 : mkr 0E6505

No.	Date	Dsn.	Chk.	App.	Revisions

Designed By:
 Drawn By:
 Checked By:
 Approved By:

FEIS
 CONCEPTUAL

CH2MHILL

INCA ENGINEERS INC.

BOLIMA DRAFTING & DESIGN INC.

Submitted: _____ Date: _____ Approved: _____ Date: _____

SOUNDTRANSIT

Date: _____

Scale: NTS
 Filename: ELC_C9A_CC01.dwg
 Contract No.: _____
 Date: 07/30/10

LINK LIGHT RAIL PROJECT
 EAST CORRIDOR
 SEGMENT C - ALT C9A

CONSTRUCTION TRUCK HAUL ROUTE PLAN

THIS PRINT REFLECTS HALF SCALE

Drawing No.: C9A_-CC01
 Sheet No.: C-181
 Rev: _____