

DWG. INFO.

DATE:

SCALE:

1" = 1'

PROJECT:

-100000-

ELC_C11A_B2C_A-100

ELC_C11A_B3_A-100

ELC_C11A_B4_A-100

SB-S&S

ZC-2234H

leg_Segment

x0225.rvt

x0226.rvt

x0228.rvt

x0231.rvt

x0232.rvt

x0235.rvt

x0236.rvt

x0237.rvt

x0238.rvt

x0239.rvt

x0240.rvt

x0241.rvt

x0242.rvt

x0243.rvt

x0244.rvt

x0245.rvt

x0246.rvt

x0247.rvt

x0248.rvt

x0249.rvt

x0250.rvt

x0251.rvt

x0252.rvt

x0253.rvt

x0254.rvt

x0255.rvt

x0256.rvt

x0257.rvt

x0258.rvt

x0259.rvt

x0260.rvt

x0261.rvt

x0262.rvt

x0263.rvt

x0264.rvt

x0265.rvt

x0266.rvt

x0267.rvt

x0268.rvt

x0269.rvt

x0270.rvt

x0271.rvt

x0272.rvt

x0273.rvt

x0274.rvt

x0275.rvt

x0276.rvt

x0277.rvt

x0278.rvt

x0279.rvt

x0280.rvt

x0281.rvt

x0282.rvt

x0283.rvt

x0284.rvt

x0285.rvt

x0286.rvt

x0287.rvt

x0288.rvt

x0289.rvt

x0290.rvt

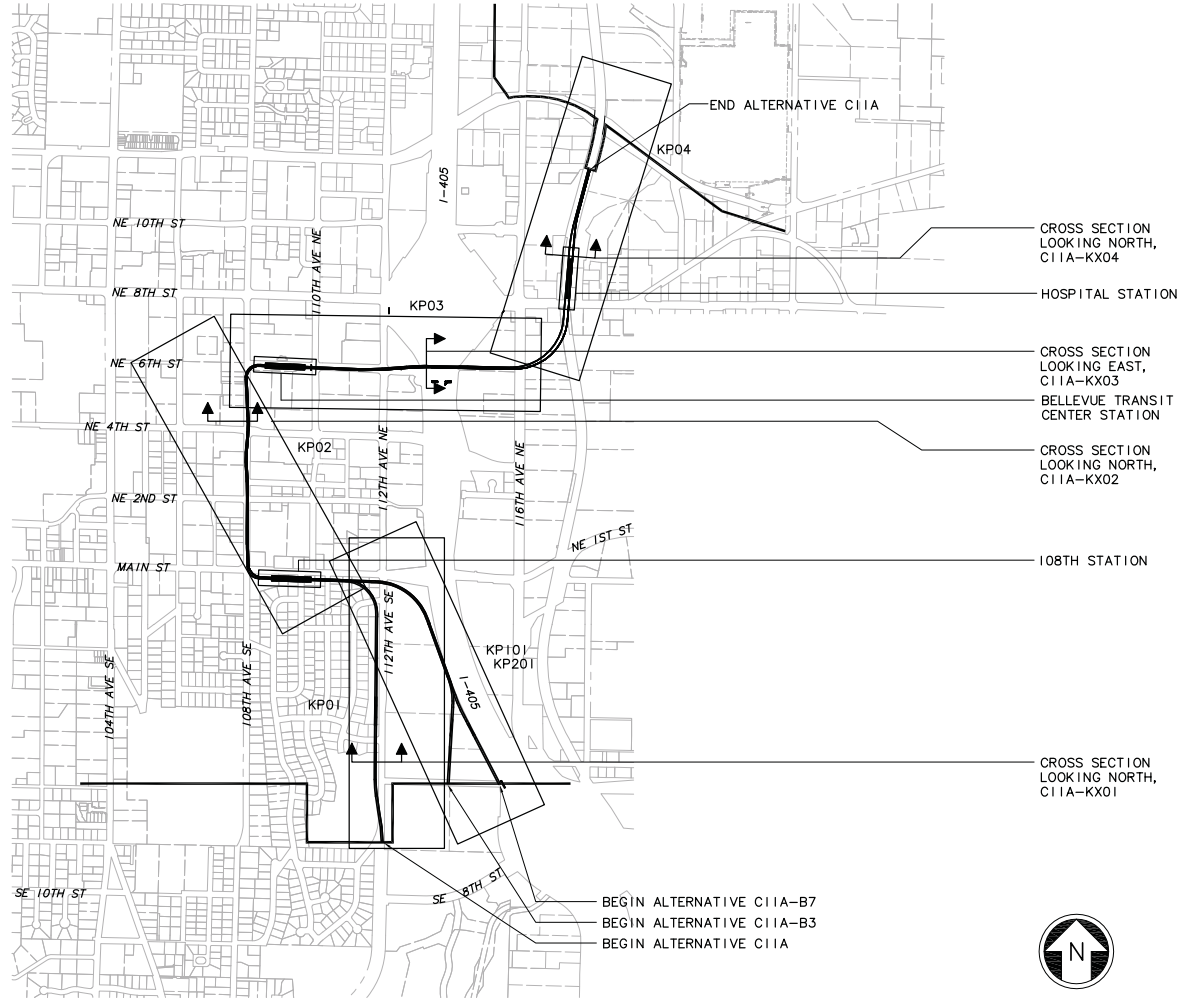
x0291.rvt

x0292.rvt

x0293.rvt

x0294.rvt

x0295.rvt



C:\work\area\ELC_C11A\GZ05.dwg
10/26/10 13:25 bolimar DE6879

No.	Date	Des.	Chk.	App.	Revisions

Designed By:	FEIS CONCEPTUAL
Drawn By:	
Checked By:	
Approved By:	

CH2MHILL

Submitted: _____ Date: _____ Approved: _____

INCA ENGINEERS INC.
BOLIMA DRAFTING & DESIGN INC.

SOUNDTRANSIT

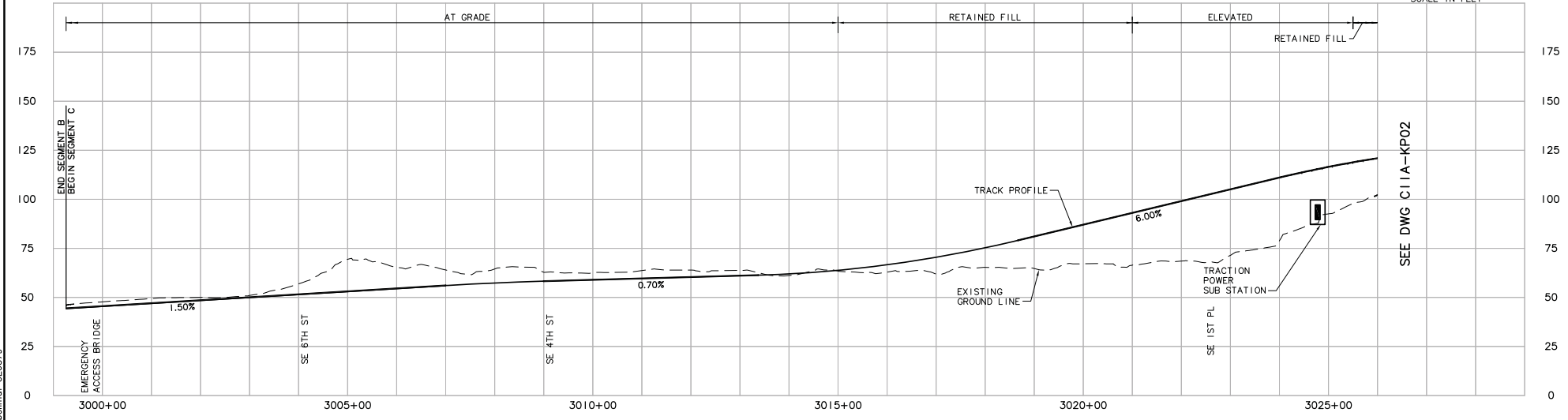
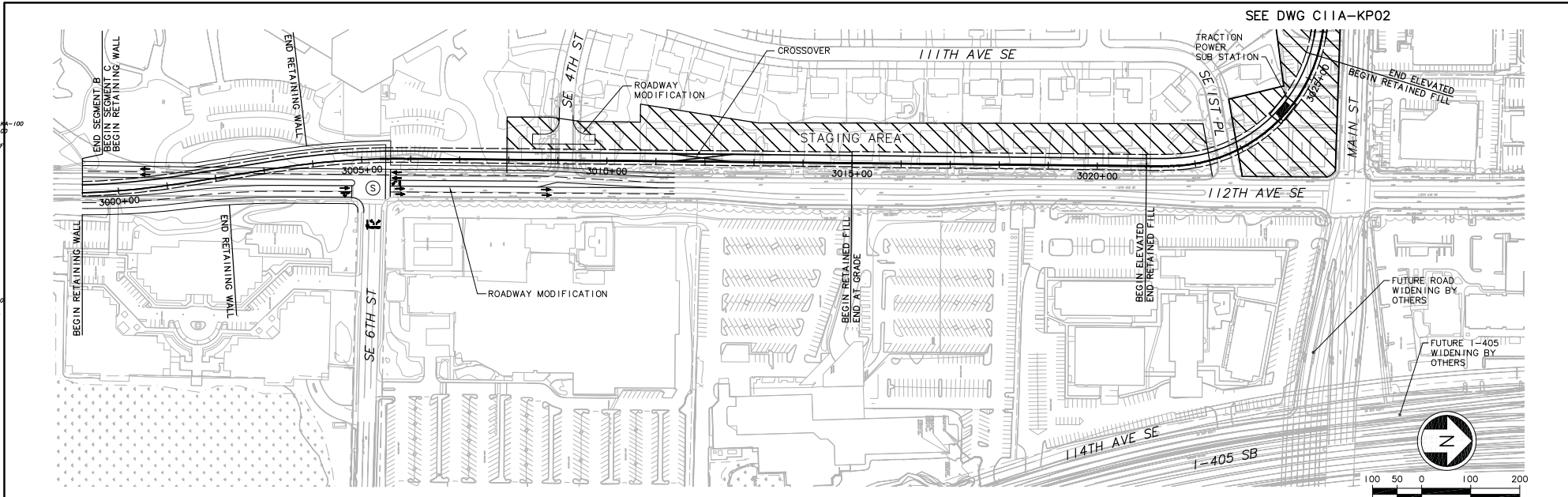
Scale: NTS
Filename: ELC_C11A_GZ05.dwg
Contract No.: _____
Date: 07/30/10

**LINK LIGHT RAIL PROJECT
EAST CORRIDOR
SEGMENT C - ALT C11A (PREFERRED)**

KEY PLAN

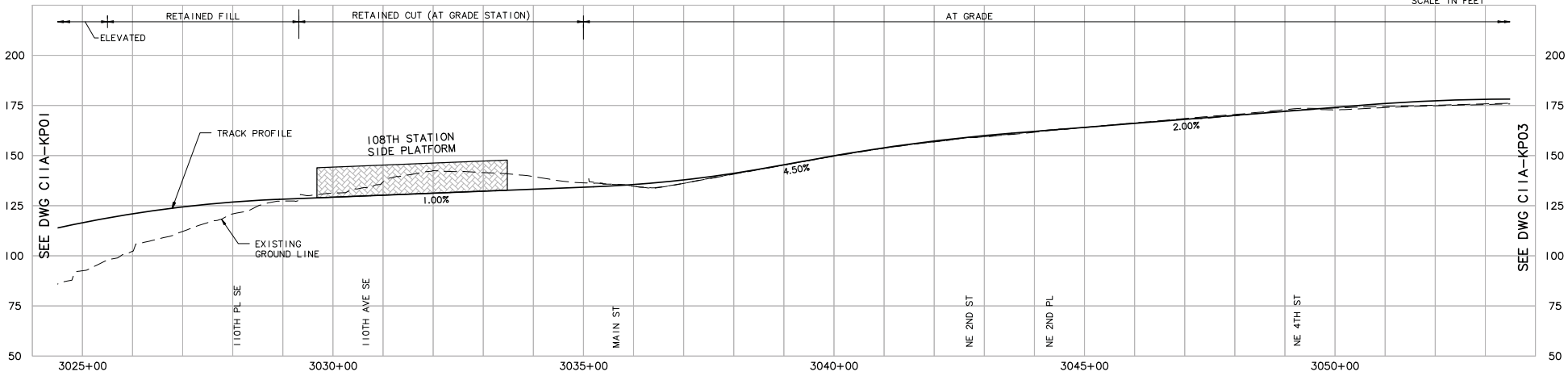
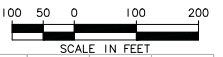
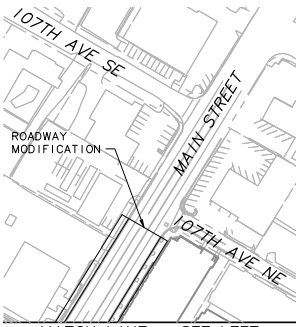
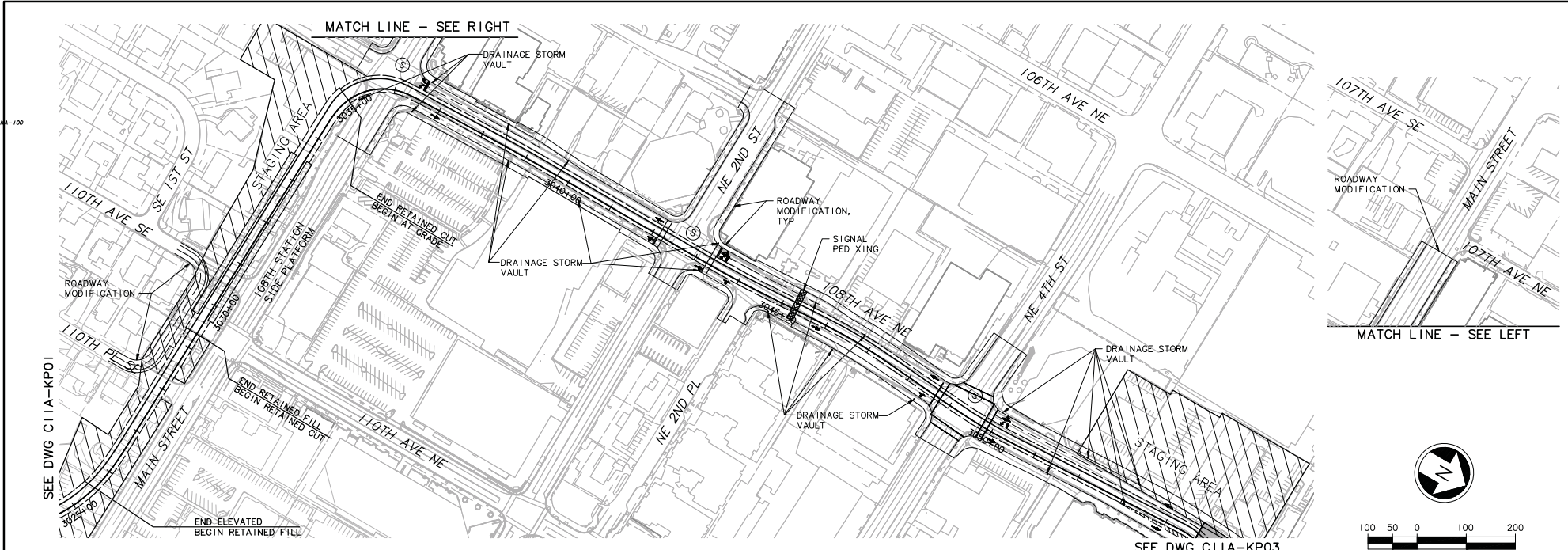
Drawing No.:	C11A-GZ05
Sheet No.:	Rev.:
C-1	

DWG INFO
 L1 SCALE
 1"=1'
 XREFS
 -310000
 -200000
 ELC_C11A_KP01-100
 SBB-0810
 XAL_ELC_MK01
 KA_L70_SF
 SF_ELC_SF
 Z0-22344
 Z0-010010
 X0225-x
 X0225-xf
 X0228-xf
 X0229-xf
 X0231-xf
 X0232-xf
 X0235-xf
 X0239-xf
 X0252-xf
 X0258-xf
 X0313-xf
 X0314-xf
 X0315-xf
 X0316-xf
 X0317-xf
 X0318-xf
 X0319-xf
 X0320-xf
 X0321-xf
 X0322-xf
 X0323-xf
 X0324-xf
 X0325-xf
 X0326-xf
 X0327-xf
 X0328-xf
 X0329-xf
 X0330-xf
 X0331-xf
 X0332-xf
 X0333-xf
 X0334-xf
 X0335-xf
 X0336-xf
 X0337-xf
 X0338-xf
 X0339-xf
 X0340-xf
 X0341-xf
 X0342-xf
 X0343-xf
 X0344-xf
 X0345-xf
 X0346-xf
 X0347-xf
 X0348-xf
 X0349-xf
 X0350-xf
 X0351-xf
 X0352-xf
 X0353-xf
 X0354-xf
 X0355-xf
 X0356-xf
 X0357-xf
 X0358-xf
 X0359-xf
 X0360-xf
 X0361-xf
 X0362-xf
 X0363-xf
 X0364-xf
 X0365-xf
 X0366-xf
 X0367-xf
 X0368-xf
 X0369-xf
 X0370-xf
 X0371-xf
 X0372-xf
 X0373-xf
 X0374-xf
 X0375-xf
 X0376-xf
 X0377-xf
 X0378-xf
 X0379-xf
 X0380-xf
 X0381-xf
 X0382-xf
 X0383-xf
 X0384-xf
 X0385-xf
 X0386-xf
 X0387-xf
 X0388-xf
 X0389-xf
 X0390-xf
 X0391-xf
 X0392-xf
 X0393-xf
 X0394-xf
 X0395-xf
 X0396-xf
 X0397-xf
 X0398-xf
 X0399-xf
 X0400-xf
 X0401-xf
 X0402-xf
 X0403-xf
 X0404-xf
 X0405-xf
 X0406-xf
 X0407-xf
 X0408-xf
 X0409-xf
 X0410-xf
 X0411-xf
 X0412-xf
 X0413-xf
 X0414-xf
 X0415-xf
 X0416-xf
 X0417-xf
 X0418-xf
 X0419-xf
 X0420-xf
 X0421-xf
 X0422-xf
 X0423-xf
 X0424-xf
 X0425-xf
 X0426-xf
 X0427-xf
 X0428-xf
 X0429-xf
 X0430-xf
 X0431-xf
 X0432-xf
 X0433-xf
 X0434-xf
 X0435-xf
 X0436-xf
 X0437-xf
 X0438-xf
 X0439-xf
 X0440-xf
 X0441-xf
 X0442-xf
 X0443-xf
 X0444-xf
 X0445-xf
 X0446-xf
 X0447-xf
 X0448-xf
 X0449-xf
 X0450-xf
 X0451-xf
 X0452-xf
 X0453-xf
 X0454-xf
 X0455-xf
 X0456-xf
 X0457-xf
 X0458-xf
 X0459-xf
 X0460-xf
 X0461-xf
 X0462-xf
 X0463-xf
 X0464-xf
 X0465-xf
 X0466-xf
 X0467-xf
 X0468-xf
 X0469-xf
 X0470-xf
 X0471-xf
 X0472-xf
 X0473-xf
 X0474-xf
 X0475-xf
 X0476-xf
 X0477-xf
 X0478-xf
 X0479-xf
 X0480-xf
 X0481-xf
 X0482-xf
 X0483-xf
 X0484-xf
 X0485-xf
 X0486-xf
 X0487-xf
 X0488-xf
 X0489-xf
 X0490-xf
 X0491-xf
 X0492-xf
 X0493-xf
 X0494-xf
 X0495-xf
 X0496-xf
 X0497-xf
 X0498-xf
 X0499-xf
 X0500-xf
 X0501-xf
 X0502-xf
 X0503-xf
 X0504-xf
 X0505-xf
 X0506-xf
 X0507-xf
 X0508-xf
 X0509-xf
 X0510-xf
 X0511-xf
 X0512-xf
 X0513-xf
 X0514-xf
 X0515-xf
 X0516-xf
 X0517-xf
 X0518-xf
 X0519-xf
 X0520-xf
 X0521-xf
 X0522-xf
 X0523-xf
 X0524-xf
 X0525-xf
 X0526-xf
 X0527-xf
 X0528-xf
 X0529-xf
 X0530-xf
 X0531-xf
 X0532-xf
 X0533-xf
 X0534-xf
 X0535-xf
 X0536-xf
 X0537-xf
 X0538-xf
 X0539-xf
 X0540-xf
 X0541-xf
 X0542-xf
 X0543-xf
 X0544-xf
 X0545-xf
 X0546-xf
 X0547-xf
 X0548-xf
 X0549-xf
 X0550-xf
 X0551-xf
 X0552-xf
 X0553-xf
 X0554-xf
 X0555-xf
 X0556-xf
 X0557-xf
 X0558-xf
 X0559-xf
 X0560-xf
 X0561-xf
 X0562-xf
 X0563-xf
 X0564-xf
 X0565-xf
 X0566-xf
 X0567-xf
 X0568-xf
 X0569-xf
 X0570-xf
 X0571-xf
 X0572-xf
 X0573-xf
 X0574-xf
 X0575-xf
 X0576-xf
 X0577-xf
 X0578-xf
 X0579-xf
 X0580-xf
 X0581-xf
 X0582-xf
 X0583-xf
 X0584-xf
 X0585-xf
 X0586-xf
 X0587-xf
 X0588-xf
 X0589-xf
 X0590-xf
 X0591-xf
 X0592-xf
 X0593-xf
 X0594-xf
 X0595-xf
 X0596-xf
 X0597-xf
 X0598-xf
 X0599-xf
 X0600-xf
 X0601-xf
 X0602-xf
 X0603-xf
 X0604-xf
 X0605-xf
 X0606-xf
 X0607-xf
 X0608-xf
 X0609-xf
 X0610-xf
 X0611-xf
 X0612-xf
 X0613-xf
 X0614-xf
 X0615-xf
 X0616-xf
 X0617-xf
 X0618-xf
 X0619-xf
 X0620-xf
 X0621-xf
 X0622-xf
 X0623-xf
 X0624-xf
 X0625-xf
 X0626-xf
 X0627-xf
 X0628-xf
 X0629-xf
 X0630-xf
 X0631-xf
 X0632-xf
 X0633-xf
 X0634-xf
 X0635-xf
 X0636-xf
 X0637-xf
 X0638-xf
 X0639-xf
 X0640-xf
 X0641-xf
 X0642-xf
 X0643-xf
 X0644-xf
 X0645-xf
 X0646-xf
 X0647-xf
 X0648-xf
 X0649-xf
 X0650-xf
 X0651-xf
 X0652-xf
 X0653-xf
 X0654-xf
 X0655-xf
 X0656-xf
 X0657-xf
 X0658-xf
 X0659-xf
 X0660-xf
 X0661-xf
 X0662-xf
 X0663-xf
 X0664-xf
 X0665-xf
 X0666-xf
 X0667-xf
 X0668-xf
 X0669-xf
 X0670-xf
 X0671-xf
 X0672-xf
 X0673-xf
 X0674-xf
 X0675-xf
 X0676-xf
 X0677-xf
 X0678-xf
 X0679-xf
 X0680-xf
 X0681-xf
 X0682-xf
 X0683-xf
 X0684-xf
 X0685-xf
 X0686-xf
 X0687-xf
 X0688-xf
 X0689-xf
 X0690-xf
 X0691-xf
 X0692-xf
 X0693-xf
 X0694-xf
 X0695-xf
 X0696-xf
 X0697-xf
 X0698-xf
 X0699-xf
 X0700-xf
 X0701-xf
 X0702-xf
 X0703-xf
 X0704-xf
 X0705-xf
 X0706-xf
 X0707-xf
 X0708-xf
 X0709-xf
 X0710-xf
 X0711-xf
 X0712-xf
 X0713-xf
 X0714-xf
 X0715-xf
 X0716-xf
 X0717-xf
 X0718-xf
 X0719-xf
 X0720-xf
 X0721-xf
 X0722-xf
 X0723-xf
 X0724-xf
 X0725-xf
 X0726-xf
 X0727-xf
 X0728-xf
 X0729-xf
 X0730-xf
 X0731-xf
 X0732-xf
 X0733-xf
 X0734-xf
 X0735-xf
 X0736-xf
 X0737-xf
 X0738-xf
 X0739-xf
 X0740-xf
 X0741-xf
 X0742-xf
 X0743-xf
 X0744-xf
 X0745-xf
 X0746-xf
 X0747-xf
 X0748-xf
 X0749-xf
 X0750-xf
 X0751-xf
 X0752-xf
 X0753-xf
 X0754-xf
 X0755-xf
 X0756-xf
 X0757-xf
 X0758-xf
 X0759-xf
 X0760-xf
 X0761-xf
 X0762-xf
 X0763-xf
 X0764-xf
 X0765-xf
 X0766-xf
 X0767-xf
 X0768-xf
 X0769-xf
 X0770-xf
 X0771-xf
 X0772-xf
 X0773-xf
 X0774-xf
 X0775-xf
 X0776-xf
 X0777-xf
 X0778-xf
 X0779-xf
 X0780-xf
 X0781-xf
 X0782-xf
 X0783-xf
 X0784-xf
 X0785-xf
 X0786-xf
 X0787-xf
 X0788-xf
 X0789-xf
 X0790-xf
 X0791-xf
 X0792-xf
 X0793-xf
 X0794-xf
 X0795-xf
 X0796-xf
 X0797-xf
 X0798-xf
 X0799-xf
 X0800-xf
 X0801-xf
 X0802-xf
 X0803-xf
 X0804-xf
 X0805-xf
 X0806-xf
 X0807-xf
 X0808-xf
 X0809-xf
 X0810-xf
 X0811-xf
 X0812-xf
 X0813-xf
 X0814-xf
 X0815-xf
 X0816-xf
 X0817-xf
 X0818-xf
 X0819-xf
 X0820-xf
 X0821-xf
 X0822-xf
 X0823-xf
 X0824-xf
 X0825-xf
 X0826-xf
 X0827-xf
 X0828-xf
 X0829-xf
 X0830-xf
 X0831-xf
 X0832-xf
 X0833-xf
 X0834-xf
 X0835-xf
 X0836-xf
 X0837-xf
 X0838-xf
 X0839-xf
 X0840-xf
 X0841-xf
 X0842-xf
 X0843-xf
 X0844-xf
 X0845-xf
 X0846-xf
 X0847-xf
 X0848-xf
 X0849-xf
 X0850-xf
 X0851-xf
 X0852-xf
 X0853-xf
 X0854-xf
 X0855-xf
 X0856-xf
 X0857-xf
 X0858-xf
 X0859-xf
 X0860-xf
 X0861-xf
 X0862-xf
 X0863-xf
 X0864-xf
 X0865-xf
 X0866-xf
 X0867-xf
 X0868-xf
 X0869-xf
 X0870-xf
 X0871-xf
 X0872-xf
 X0873-xf
 X0874-xf
 X0875-xf
 X0876-xf
 X0877-xf
 X0878-xf
 X0879-xf
 X0880-xf
 X0881-xf
 X0882-xf
 X0883-xf
 X0884-xf
 X0885-xf
 X0886-xf
 X0887-xf
 X0888-xf
 X0889-xf
 X0890-xf
 X0891-xf
 X0892-xf
 X0893-xf
 X0894-xf
 X0895-xf
 X0896-xf
 X0897-xf
 X0898-xf
 X0899-xf
 X0900-xf
 X0901-xf
 X0902-xf
 X0903-xf
 X0904-xf
 X0905-xf
 X0906-xf
 X0907-xf
 X0908-xf
 X0909-xf
 X0910-xf
 X0911-xf
 X0912-xf
 X0913-xf
 X0914-xf
 X0915-xf
 X0916-xf
 X0917-xf
 X0918-xf
 X0919-xf
 X0920-xf
 X0921-xf
 X0922-xf
 X0923-xf
 X0924-xf
 X0925-xf
 X0926-xf
 X0927-xf
 X0928-xf
 X0929-xf
 X0930-xf
 X0931-xf
 X0932-xf
 X0933-xf
 X0934-xf
 X0935-xf
 X0936-xf
 X0937-xf
 X0938-xf
 X0939-xf
 X0940-xf
 X0941-xf
 X0942-xf
 X0943-xf
 X0944-xf
 X0945-xf
 X0946-xf
 X0947-xf
 X0948-xf
 X0949-xf
 X0950-xf
 X0951-xf
 X0952-xf
 X0953-xf
 X0954-xf
 X0955-xf
 X0956-xf
 X0957-xf
 X0958-xf
 X0959-xf
 X0960-xf
 X0961-xf
 X0962-xf
 X0963-xf
 X0964-xf
 X0965-xf
 X0966-xf
 X0967-xf
 X0968-xf
 X0969-xf
 X0970-xf
 X0971-xf
 X0972-xf
 X0973-xf
 X0974-xf
 X0975-xf
 X0976-xf
 X0977-xf
 X0978-xf
 X0979-xf
 X0980-xf
 X0981-xf
 X0982-xf
 X0983-xf
 X0984-xf
 X0985-xf
 X0986-xf
 X0987-xf
 X0988-xf
 X0989-xf
 X0990-xf
 X0991-xf
 X0992-xf
 X0993-xf
 X0994-xf
 X0995-xf
 X0996-xf
 X0997-xf
 X0998-xf
 X0999-xf
 X1000-xf



No. Date Dan. Chk. App. Revisions 	Designed By:	FEIS CONCEPTUAL	CH2MHILL	INCA ENGINEERS INC. BOLIMA DRAFTING & DESIGN INC.	SOUNDTRANSIT	Scale: H: 1" = 100'; V: 1" = 25' Filename: ELC_C11A_KP01.dwg Contract No.:	LINK LIGHT RAIL PROJECT EAST CORRIDOR SEGMENT C - ALT C11A (PREFERRED) TRACK PLAN & PROFILE	Drawing No.:
	Drawn By:							C11A-KP01
	Checked By:							Sheet No.:
	Approved By:							Rev.:
			Submitted:	Date:	Approved:	Date:	07/30/10	C-2

DWG. IREQ:
 L1SCALE:
 1/4"
 AREA:
 -AllLoc;
 -DwgTitle;
 ELC_C11A_KP02_A-100
 SB-FE15
 20-23246
 key_Segment
 x0225r
 x0225f
 x0226r
 x0226f
 x0311r
 x0311f
 x0325r
 x0325f
 x0331r
 x0331f
 x0337r
 x0337f
 -MicroRoad;
 key_Corr
 vp_100_c11a



c:\work\feis\segment_c\c11a\ELC_ICI1A\KP02.dwg
 04/19/11 11:33 - khium 065585

No.	Date	Dsn.	Chk.	App.	Revisions

Designed By:	
Drawn By:	
Checked By:	
Approved By:	

**FEIS
CONCEPTUAL**

CH2M HILL

Submitted: _____ Date: _____ Approved: _____ Date: _____

**INCA
ENGINEERING INC.**

BOLIMA
 CONSULTANTS & ENGINEERS

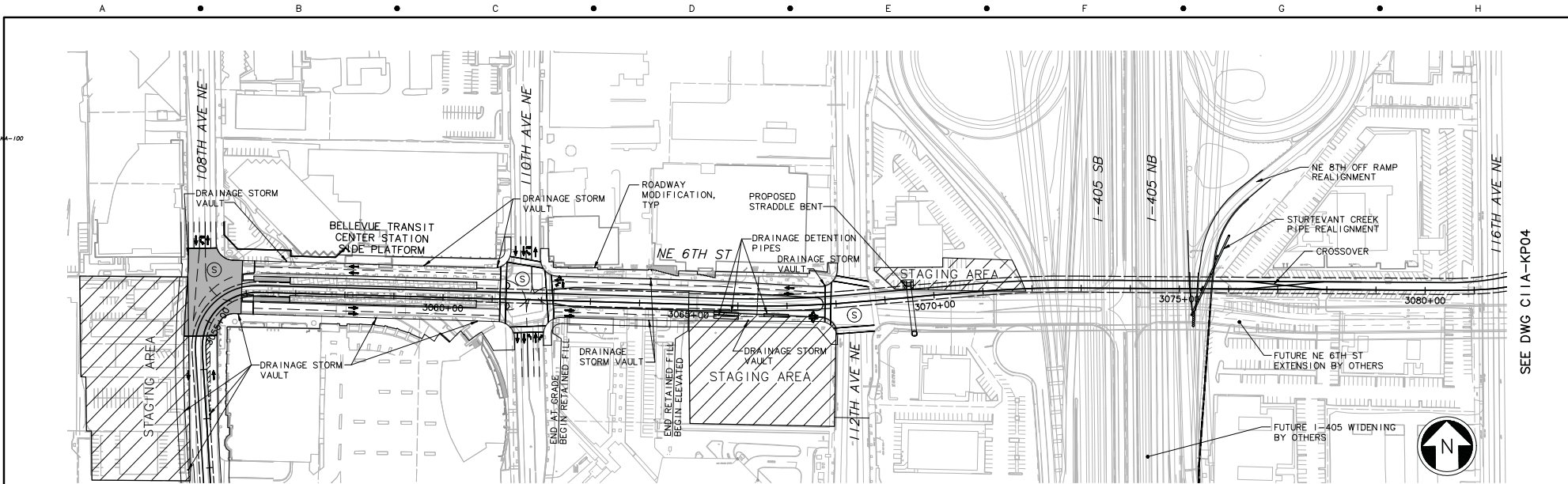
SOUND TRANSIT

Scale:
 H: 1"=100'; V: 1"=25'
 Filename:
 ELC_ICI1AKP02.dwg
 Contract No.: _____
 Date: 07/30/10

LINK LIGHT RAIL PROJECT
 EAST CORRIDOR
 SEGMENT C - ALT C11A (PREFERRED)
TRACK PLAN & PROFILE

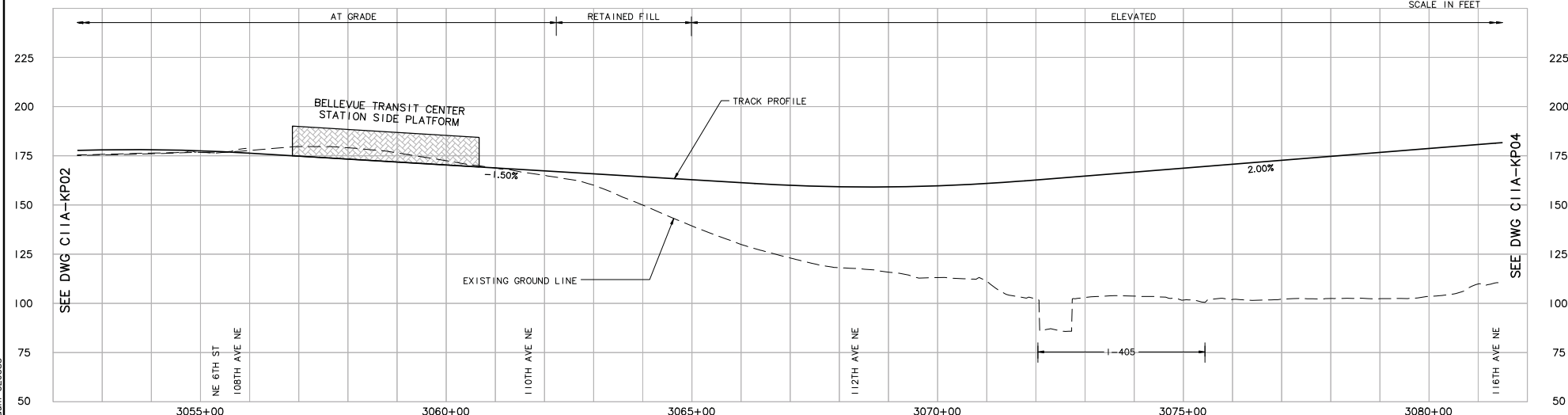
Drawing No.: C11A-KP02
 Sheet No.: _____ Rev.: _____
C-3

DWG. LINE:
 LISCALE:
 1"=1'
 AREA:
 -Altitude:
 ELC_C11A_KP04-100
 Future-N/E/6th
 SB-N/E/5
 20-22,544
 20-010010
 kv_Segment
 x0329r
 x0328r
 x0329f
 x0331r
 x0331f
 x1405_ohm
 -L:Area:ohm
 St_Names_E_40
 w_100_c11a



SEE DWG C11A-KP02

SEE DWG C11A-KP04



SEE DWG C11A-KP02

SEE DWG C11A-KP04

c:\work\feis\segment_c\c11a\ELC_C11A_KP03.dwg
 04/18/11 11:09 : kham CE6585

Designed By:					
Drawn By:					
Checked By:					
Approved By:					
No.	Date	Dsn.	Chk.	App.	Revisions

FEIS
 CONCEPTUAL



Scale:
 H: 1" = 100'; V: 1" = 25'
 Filename:
 ELC_C11A_KP03.dwg
 Contract No.:

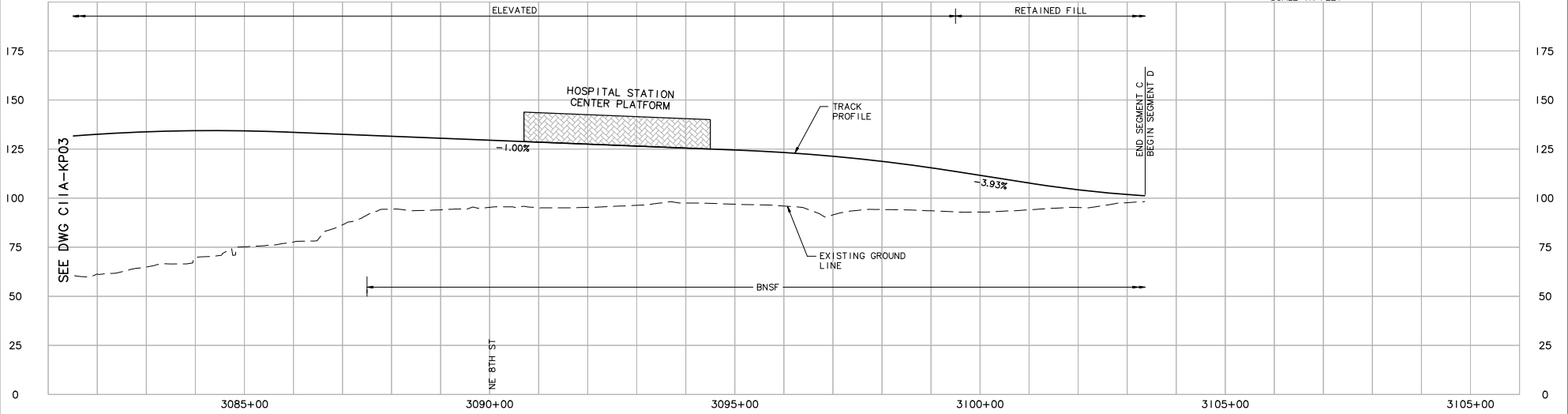
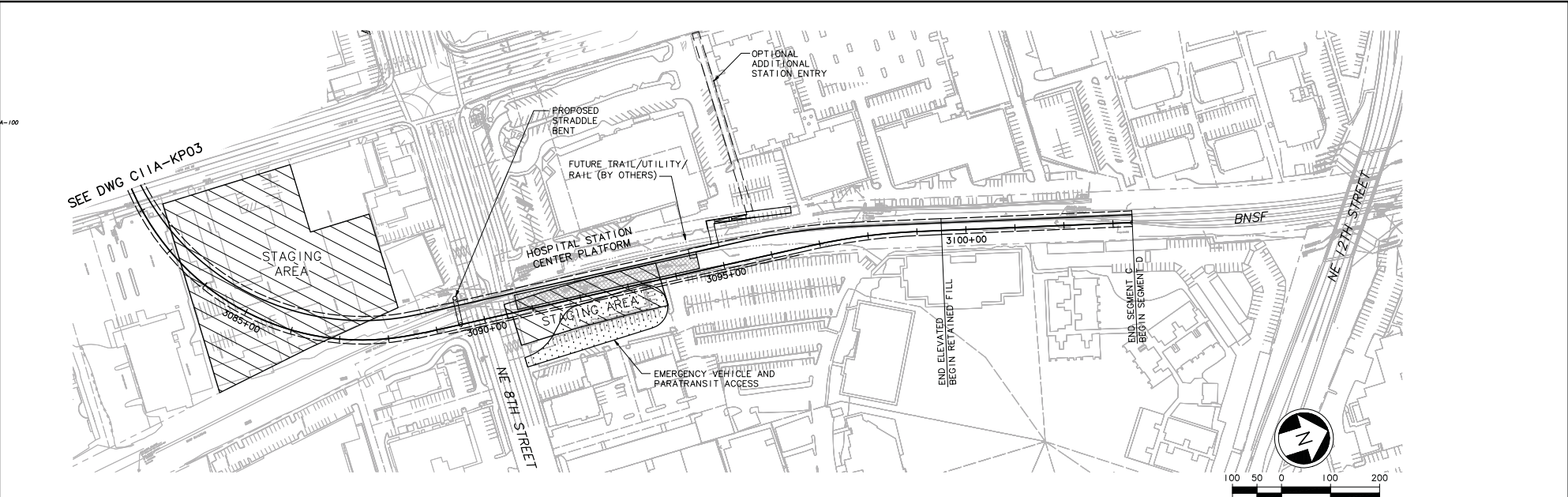


LINK LIGHT RAIL PROJECT
 EAST CORRIDOR
 SEGMENT C - ALT C11A (PREFERRED)
 TRACK PLAN & PROFILE

Date: 07/30/10

Drawing No.:	C11A-KP03
Sheet No.:	C-4
Rev.:	

DWG. LINE:
 LISCALE:
 1"=1'
 XREF:
 -Allloc:
 -06/09/09
 ELC_C11A_KP04-100
 20-23.541
 20-010010
 x0225rx
 x0225rf
 x0226rx
 x0226rf
 x0311rx
 x0311rf
 x0325rx
 x0325rf
 x0326rx
 x0326rf
 x0331rx
 x0331rf
 x0332rx
 x0332rf
 x0333rx
 x0333rf
 x1405_0hon
 -Utrasonam:
 SI_Names_E_40
 Key_Sent
 Key_Segment
 vp_100_c11a



c:\work\feis\segment_c\c11a\ELC_C11A_KP04.dwg
 06/20/11 13:44 : khuum 065585

No.	Date	Dsn.	Chk.	App.	Revisions

Designed By:
 Drawn By:
 Checked By:
 Approved By:

FEIS
 CONCEPTUAL

CH2MHILL

BOLIMA
 CONSULTING & ENGINEERING, INC.

SOUNDTRANSIT

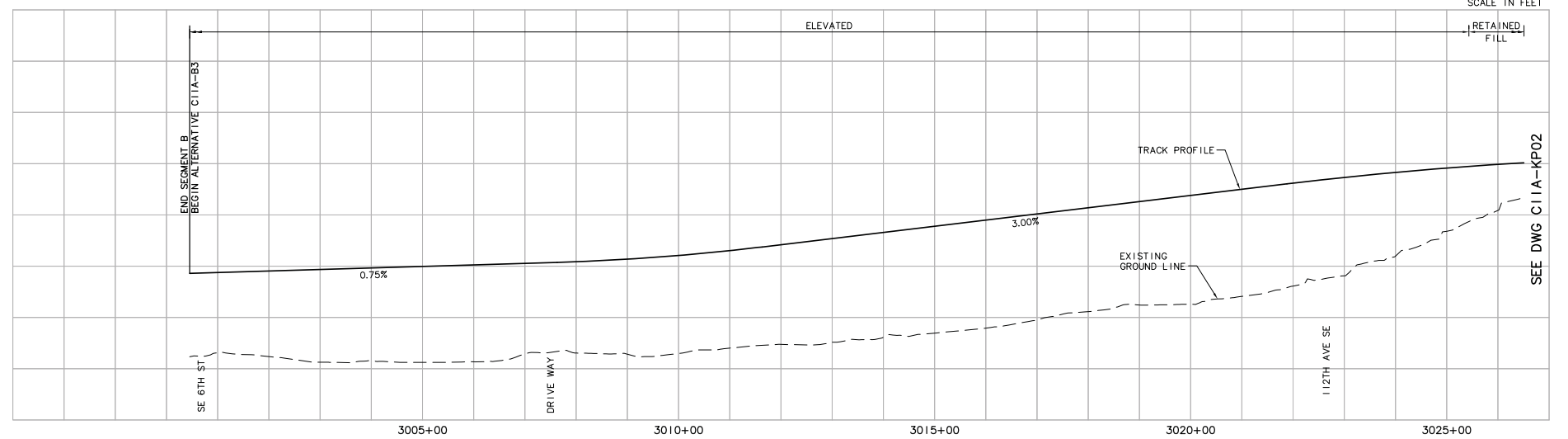
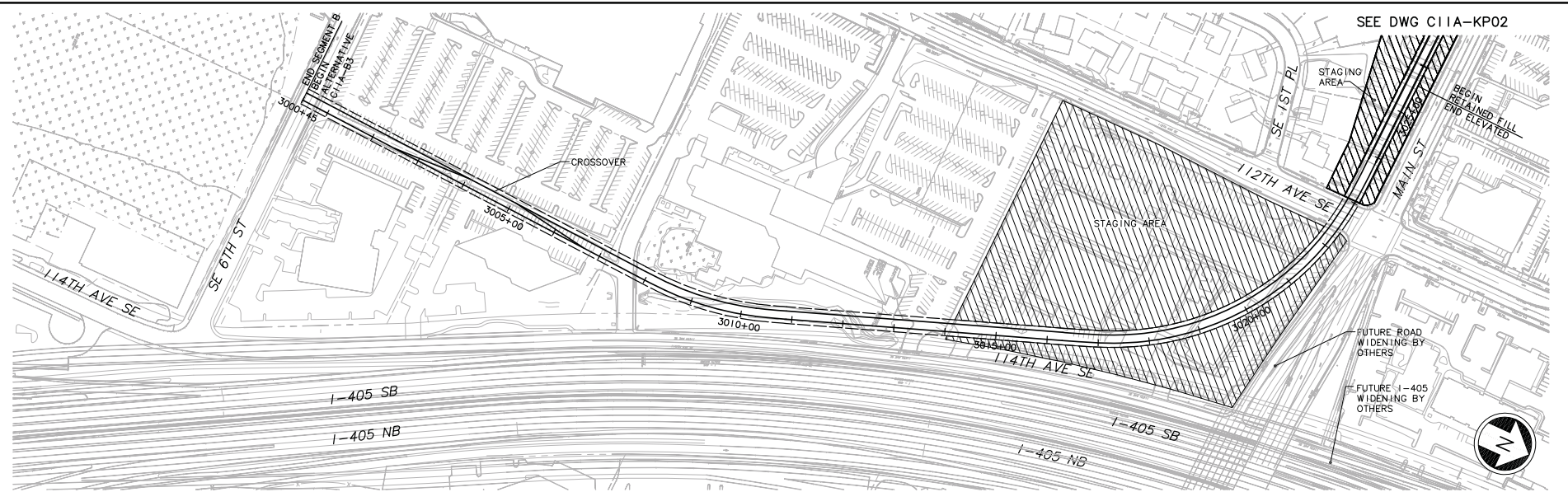
Scale:
 H: 1" = 100'; V: 1" = 25'
 Filename:
 ELC_C11A_KP04.dwg
 Contract No.:
 Date: 07/30/10



LINK LIGHT RAIL PROJECT
 EAST CORRIDOR
 SEGMENT C - ALT C11A (PREFERRED)
 TRACK PLAN & PROFILE

Drawing No.:
 C11A-KP04
 Sheet No.:
 C-5
 Rev.:

- DWG INFO
 LTSCALE
 1=1
 0027.c
 -3110a.c
 -D:\m\c
 ELC_C11A_KP01.dwg
 S:\B-SO12
 XA_ELC_C11A_KP01.dwg
 XA_L12_SF
 XA_L12_SF.dwg
 XA_ELC_SF
 ZC-010010
 X0225.r
 X0225.rtf
 X0226.r
 X0226.rtf
 X0311.r
 X0311.rtf
 X0312.r
 X0312.rtf
 X0313.r
 X0313.rtf
 X0314.r
 X0314.rtf
 X0315.r
 X0315.rtf
 X1405.dwg
 -1405.dwg
 ELC_L17_CU
 SL_Names_L_40
 Rev_East
 Rev_Segment
 PL_100_c11a



G:\work\ares\ELC_C11A3KP01.dwg
 10/15/10 1:34:03 bolimar CE6879

No.	Date	Dan.	Chk.	App.

Designed By:
 Drawn By:
 Checked By:
 Approved By:

FEIS
 CONCEPTUAL

CH2MHILL
INCA ENGINEERS INC.
BOLIMA DRAFTING & DESIGN INC.
SOUNDTRANSIT

Submitted: _____ Date: _____ Approved: _____ Date: _____

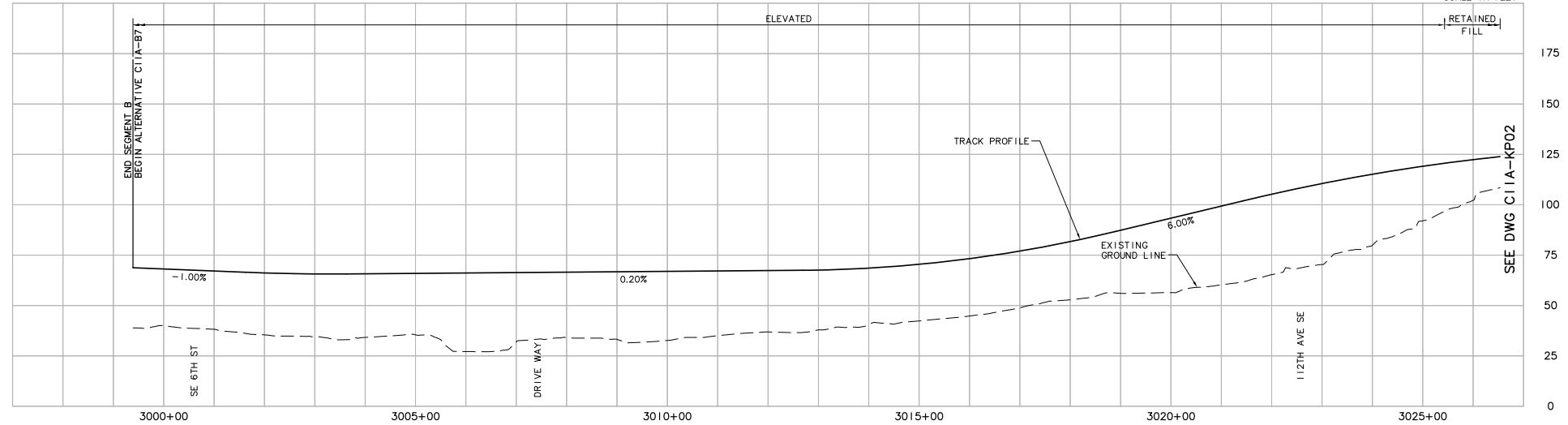
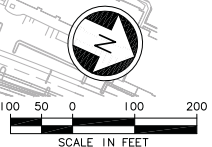
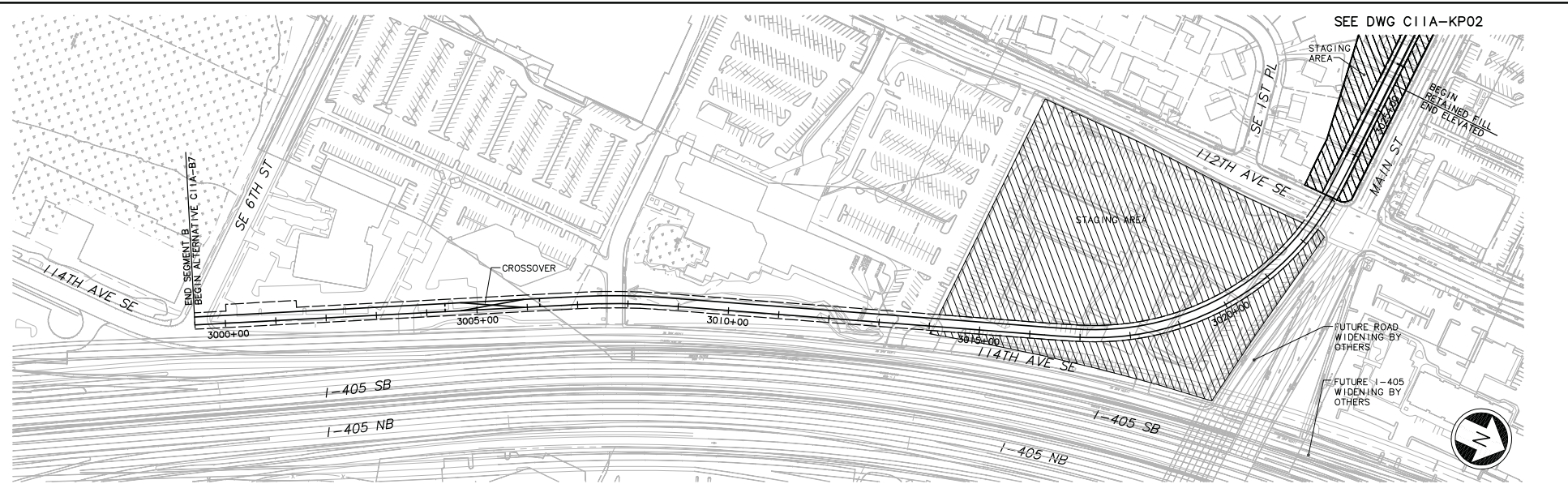
Scale:
 H: 1"=100'; V: 1"=25'
 Filename:
 ELC_C11A3KP01.dwg
 Contract No.: _____

LINK LIGHT RAIL PROJECT
EAST CORRIDOR
 SEGMENT C - ALT C11A FROM B3
TRACK PLAN & PROFILE

Scale: 1/2" = 100'
 DATE PLOTTED: 10/15/10 1:34:03

Drawing No.: 11A3-KP01
 Sheet No.: _____ Rev.: _____
C-6

DWG INFO
 L7SCALE
 1=1
 XREFS
 -D:\10000
 ELC_C11A_B7.dwg
 S:\B-S\0112
 XA_ELC_C11A.dwg
 XA_L12.dwg
 XA_ELC_SF
 ZC-22.dwg
 ZC-010010
 x0225r
 x0225rf
 x0228r
 x0228rf
 x0231r
 x0231rf
 x0252r
 x0252rf
 x0258r
 x0258rf
 x0311r
 x0311rf
 x0313r
 x0313rf
 x1405_0chan
 -1405chan.dwg
 ELC_L17_C11
 SL_Names_L_40
 Rev_East
 Rev_Segment
 W_100_c11a



G:\work\areis\ELC_C11A7KP01.dwg
 10/15/10 13:41 bolimar 066579

Designed By:	
Drawn By:	
Checked By:	
Approved By:	

FEIS
CONCEPTUAL

CH2MHILL

INCA
 ENGINEERS INC.
BOLIMA
 DRAFTING & DESIGN INC.

SOUNDTRANSIT

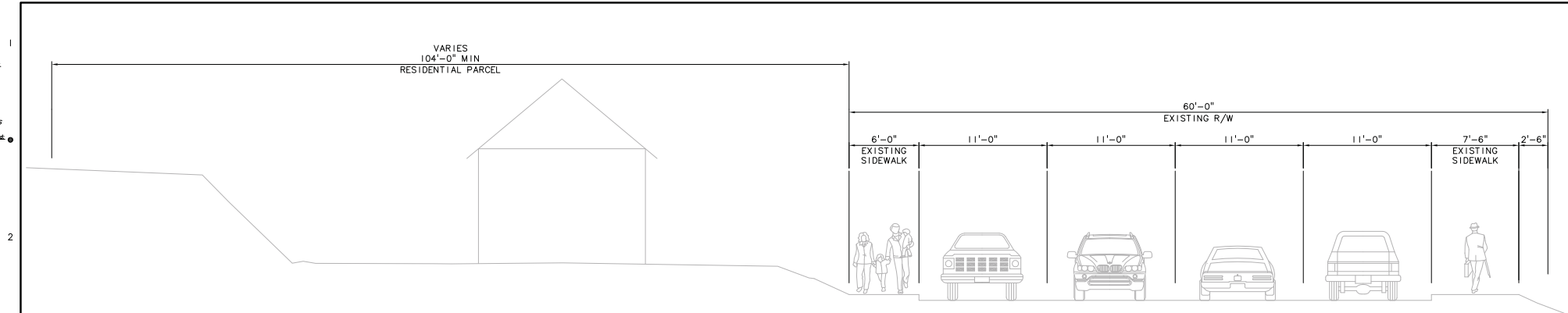
LINK LIGHT RAIL PROJECT
 EAST CORRIDOR
 SEGMENT C - ALT C11A FROM B7
 TRACK PLAN & PROFILE

Drawing No.:	11A7-KP01
Sheet No.:	C-7
Rev.:	

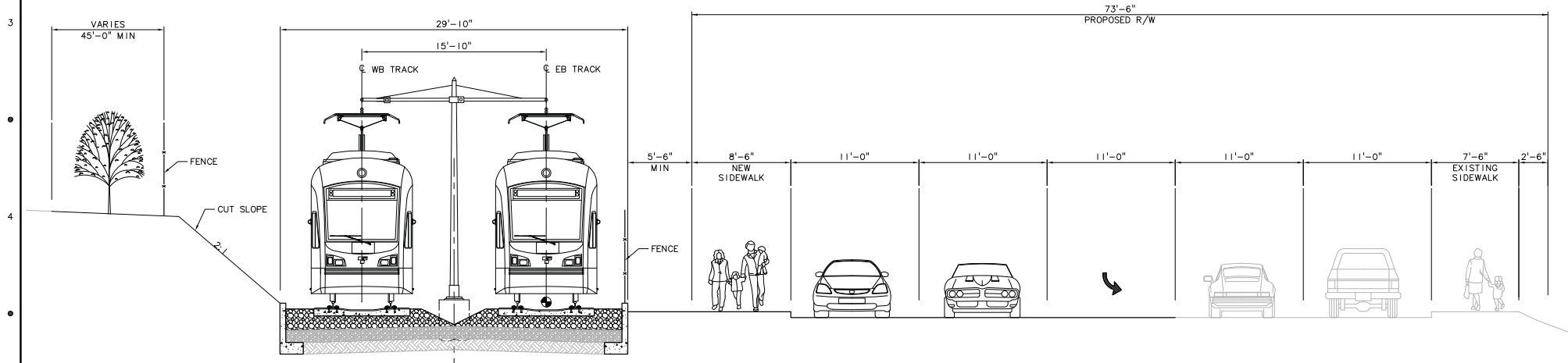
No.	Date	Des.	Chk.	App.	Revisions

Scale:
 H: 1" = 100'; V: 1" = 25'
 Filename:
 ELC_C11A7KP01.dwg
 Contract No.:
 Date: 07/30/10

DWG. INFO:
 L73SCALE:
 1"=1'
 DATE:
 -11/06/10
 -Dwg: JLC
 049-00712
 20-2234H
 -Accession#



EXISTING ROADWAY SECTION: 112TH AVE SE (SOUTH OF SE 4TH ST)
 SCALE: NTS



PROPOSED ROADWAY & LRT SECTION: 112TH AVE SE (WIDENING TO WEST)
 ALIGNMENT: C11A
 TRACK TYPE: AT-GRADE BALLASTED DOUBLE TRACK GUIDEWAY
 SCALE: NTS

G:\work\areis\ELC_C11AKX01.dwg
 10/27/10 13:58 bolimar DE6879

Designed By:					
Drawn By:					
Checked By:					
Approved By:					
No.	Date	Des.	Chk.	App.	Revisions

FEIS
 CONCEPTUAL



Scale: NTS
 Filename: ELC_C11AKX01.dwg
 Contract No.:
 Date: 07/30/10

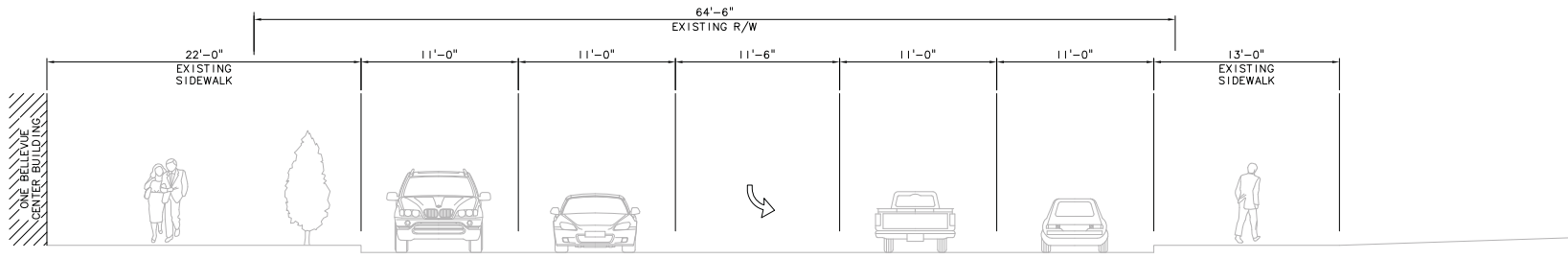


LINK LIGHT RAIL PROJECT
 EAST CORRIDOR
 SEGMENT C - ALT C11A (PREFERRED)
 TYPICAL SECTION
 112TH AVE SE
 SOUTH OF SE 4TH ST

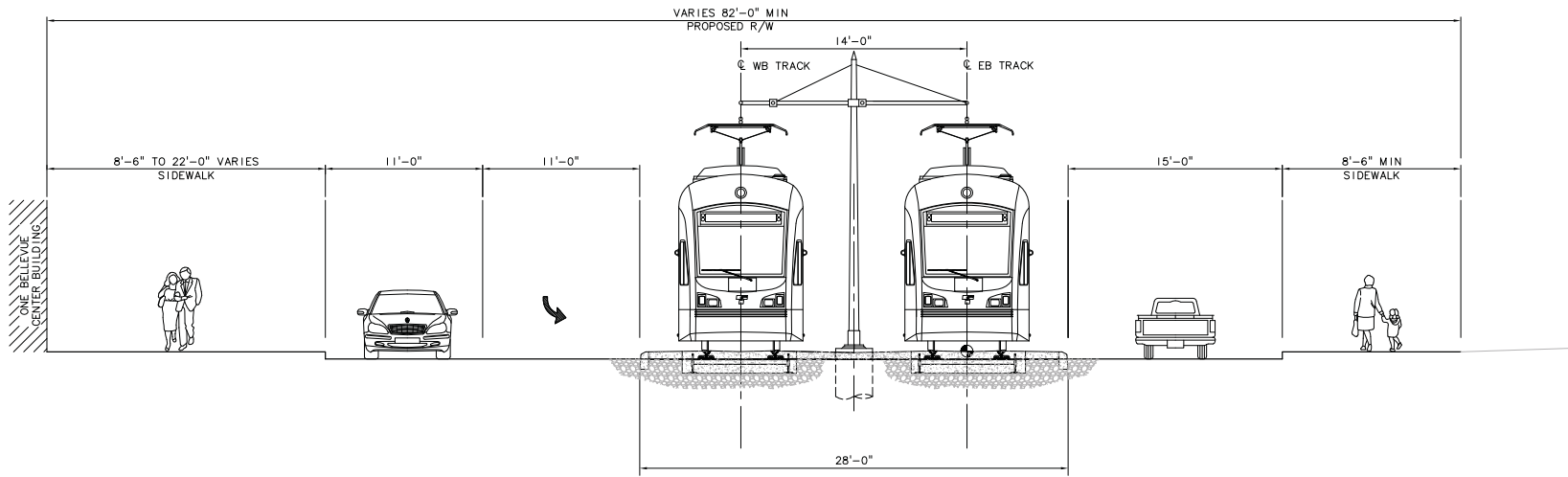
Drawing No.: C11A-KX01

Sheet No.: Rev.: C-8

DWG. INFO:
 L73SCALE:
 1"=1'
 05/23/10
 -JH/MLK
 -D/STW
 Z0=22.54'
 -Unclassified



EXISTING ROADWAY SECTION - 108TH AVE NE (NE 4TH ST TO NE 6TH ST)
 SCALE: NTS



PROPOSED ROADWAY & LRT SECTION - 108TH AVE NE
 ALIGNMENT: C11A
 AT GRADE EMBEDDED DOUBLE TRACK GUIDEWAY
 SCALE: NTS

G:\work\feis\ELC_C11AKX02.dwg
 07/27/11 16:07 : bolimar CE6879

Designed By:					
Drawn By:					
Checked By:					
Approved By:					
No.	Date	Des.	Chk.	App.	Revisions

FEIS
CONCEPTUAL



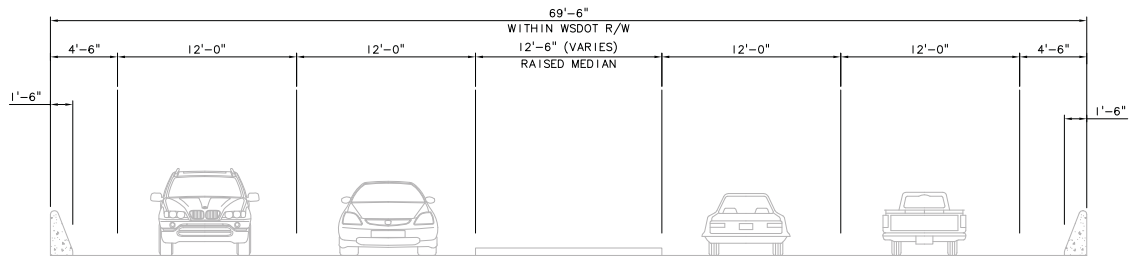
Scale:	NTS
Filename:	ELC_C11AKX02.dwg
Contract No.:	
Date:	07/30/10



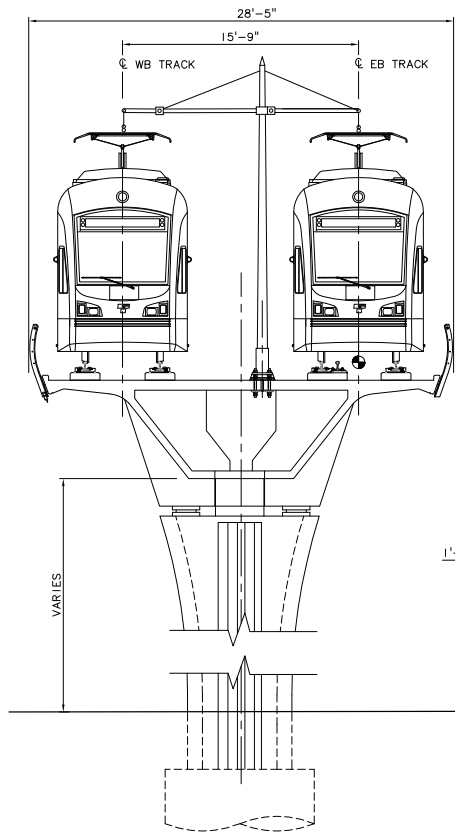
LINK LIGHT RAIL PROJECT
 EAST CORRIDOR
 SEGMENT C - ALT C11A (PREFERRED)
 TYPICAL SECTION
 108TH AVE NE
 NE 4TH ST TO NE 6TH ST

Drawing No.:	C11A-KX02
Sheet No.:	C-9
Rev.:	

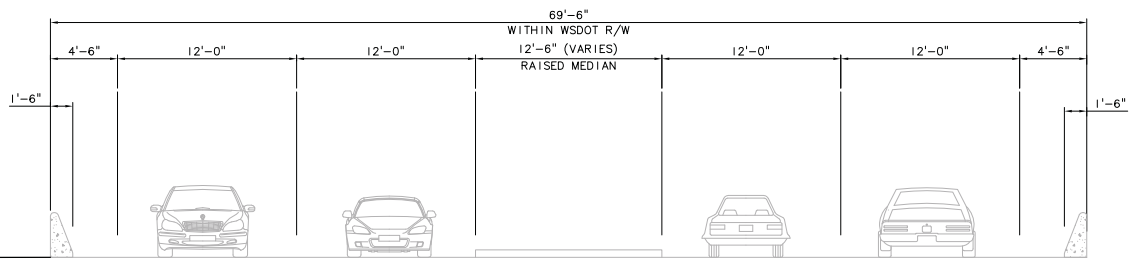
DWG. INFO:
 1/23 SCALE:
 1"=1'
 DATE:
 -11/20/10
 -01/20/11
 01/20/11
 02-22/11
 -10/20/11



EXISTING ROADWAY SECTION - NE 6TH ST (112TH AVE NE TO I-405)
 SCALE: NTS



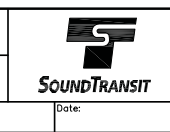
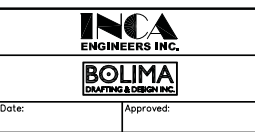
PROPOSED LRT SECTION - NE 6TH ST
 ALIGNMENT: C11A
 ELEVATED DIRECT FIXATION DOUBLE TRACK GUIDEWAY
 SCALE: NTS



G:\work\areis\ELC_C11AKX03.dwg
 10/25/10 13:58 bolimar DE6879

No.	Date	Dan.	Chk.	App.	Revisions	

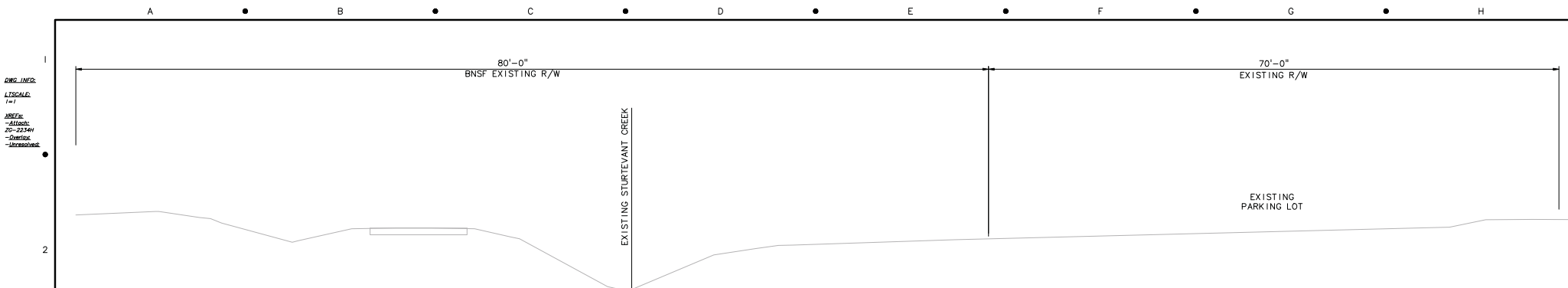
FEIS
 CONCEPTUAL



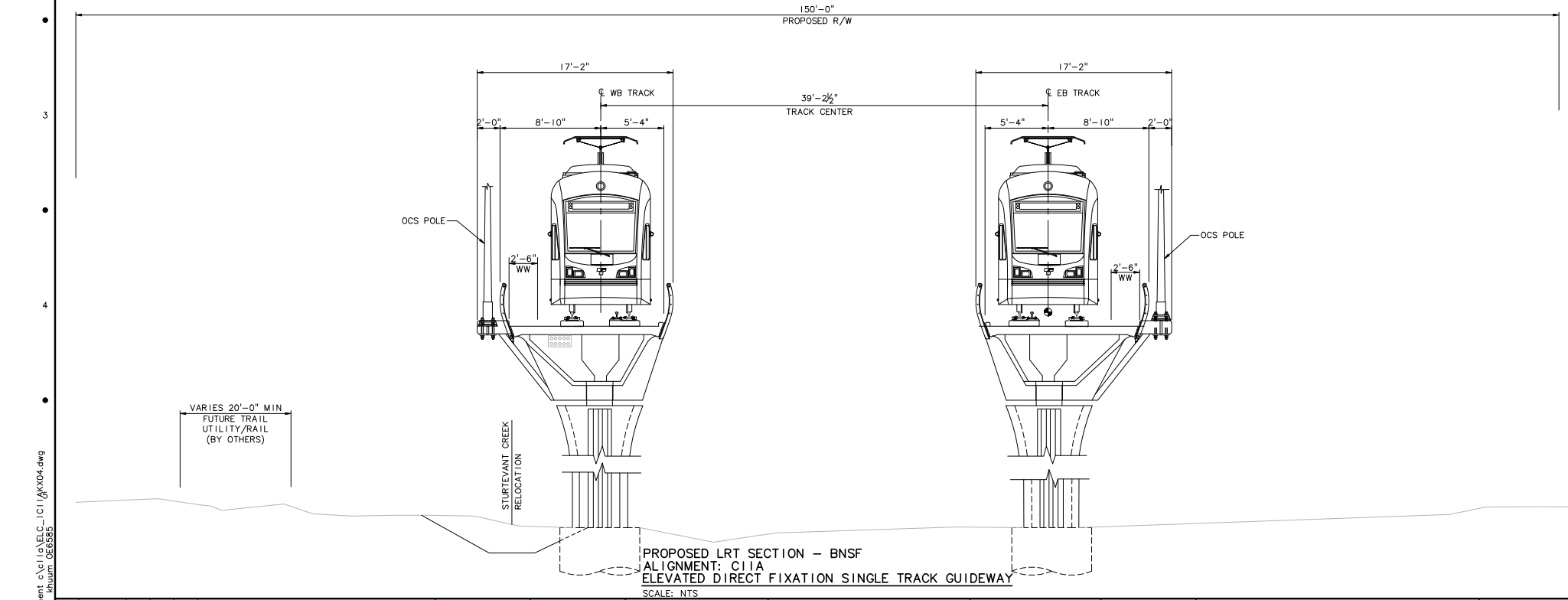
Scale:	NTS
Filename:	ELC_C11AKX03.dwg
Contract No.:	
Date:	07/30/10

LINK LIGHT RAIL PROJECT
 EAST CORRIDOR
 SEGMENT C - ALT C11A (PREFERRED)
 TYPICAL SECTION
 NE 6TH ST
 112TH AVE NE TO I-405

Drawing No.:	C11A-KX03
Sheet No.:	
Rev.:	C-10



EXISTING TYPICAL SECTION - BNSF CORRIDOR (JUST NORTH OF HOSPITAL STATION)
SCALE: NTS



PROPOSED LRT SECTION - BNSF
ALIGNMENT: C11A
ELEVATED DIRECT FIXATION SINGLE TRACK GUIDEWAY
SCALE: NTS

c:\work\feis\segment_c\c11a\ELC_IC11A\KX04.dwg
05/09/11 15:13 : khuum 065585

No.	Date	Dsn.	Chk.	App.	Revisions

Designed By:
Drawn By:
Checked By:
Approved By:

FEIS CONCEPTUAL

CH2MHILL

INCA ENGINEERING INC.

BOLIMA CONSULTING & DESIGN INC.

SOUNDTRANSIT

Scale: NTS
Filename: ELC_IC11A\KX04.dwg
Contract No.:
Date: 07/30/10

LINK LIGHT RAIL PROJECT
EAST CORRIDOR
SEGMENT C - ALT C11A (PREFERRED)

TYPICAL SECTION
BNSF CORRIDOR

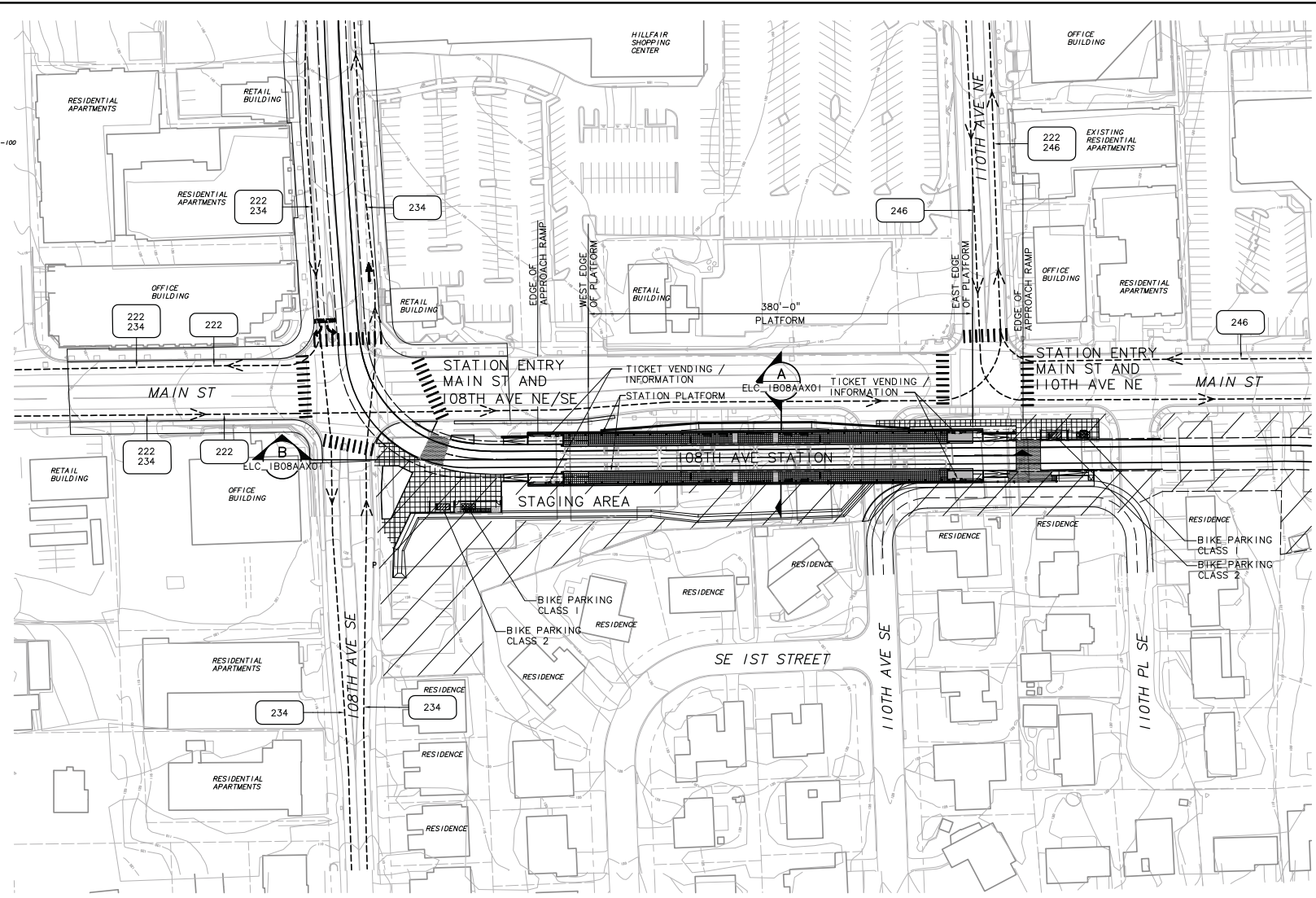
Drawing No.: C11A-KX04
Sheet No.:
Rev.:
C-11

NOTES

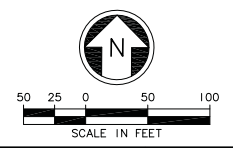
- 1. ALIGNMENT C11A

SYMBOLS KEY

	NEW BUS STOP
	EXISTING BUS STOP
	BUS LAYOVER
	PARATRANSIT SHELTER
	PARATRANSIT STOP
	BUS ROUTE
	BIKE PARKING: CLASS 1
	BIKE PARKING: CLASS 2
	CROSSWALK
	NEW LANDSCAPE
	NEW WALKS
	NEW PLAZA
	TRACK



STATION AREA PLAN
SCALE: 1" = 50'

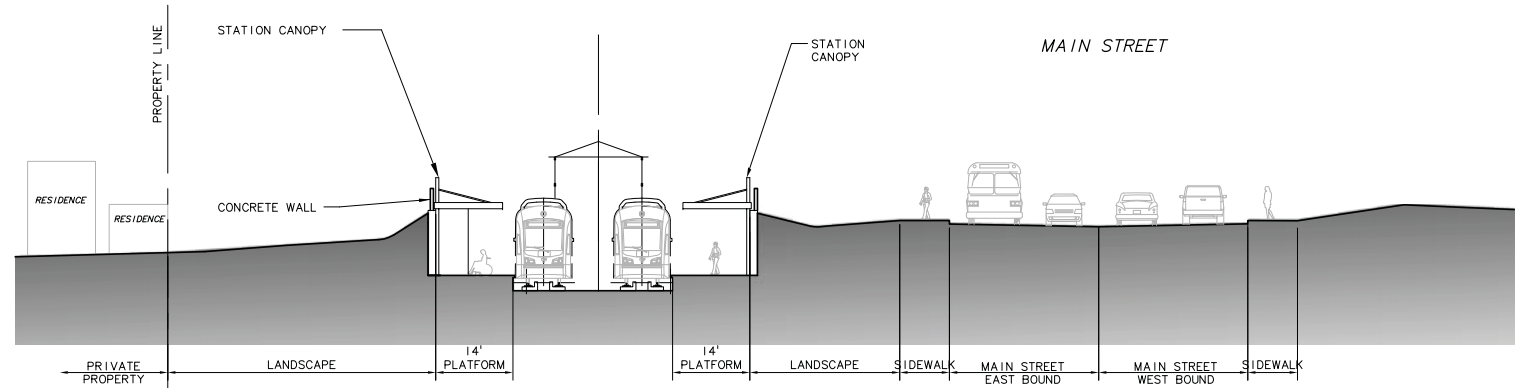


DRG. INFO.
 LTSCALE: 1=1
 XREFS:
 -Drawn:
 -Checked:
 C:\work\feis\ELC_IB08AAS01.dwg
 ELC_IB08AAS01.dwg
 ELC_C11A.dwg
 ELC_IB08AAS01.dwg
 XREFS:
 x0228m
 x0229m
 x0228m
 x0229m
 x0228m
 x0229m
 -layeredit

C:\work\feis\ELC_IB08AAS01.dwg
 07/27/11 15:59 : baimar CE8579

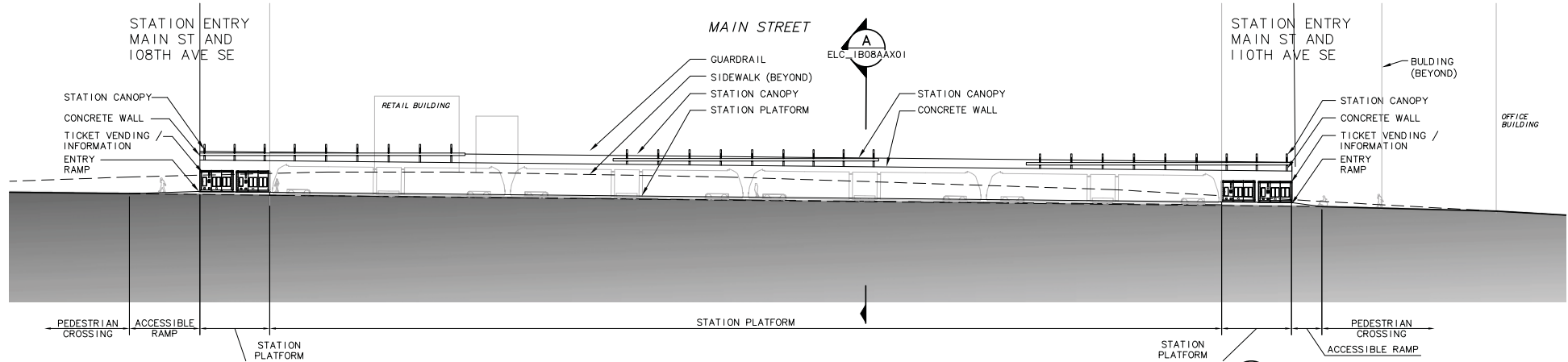
Designed By:	Drawn By:	Checked By:	Approved By:	<p style="text-align: center;">FEIS CONCEPTUAL</p> <p style="text-align: center;">CH2MHILL</p>	<p style="text-align: center;">HEWITT</p>	<p>SOUNDTRANSIT</p>	Scale: 1" = 50'	<p>LINK LIGHT RAIL PROJECT EAST CORRIDOR SEGMENT C - ALT C11A (PREFERRED)</p> <p>108TH AVE NE STATION AREA PLAN</p>	Drawing No.: B08A-AS01			
Submitted:	Date:	Approved:	Date:				Sheet No.:		Rev.:			
							07/30/10		C-12			
No.	Date	Dan.	Chk.				App.		Revisions			

DWG INFO:
 L73SCALE:
 1"=1'
 DATE:
 -10/06/10
 -D:\work\ELC_1B08AAX01.dwg
 SUB-SOFTS:
 20--225M
 -MicroStation



SECTION
 SCALE: 1" = 10'

A
 ELC_1B08AAS01



SECTION
 SCALE: 1" = 20'

B
 ELC_1B08AAS01



G:\work\site\ELC_1B08AAX01.dwg
 10/06/10 09:40 : balmat 066979

No.	Date	Des.	Chk.	App.	Revisions

Designed By:
 Drawn By:
 Checked By:
 Approved By:

**FEIS
 CONCEPTUAL**

CH2MHILL
 Submitted:

HEWITT
 Date:

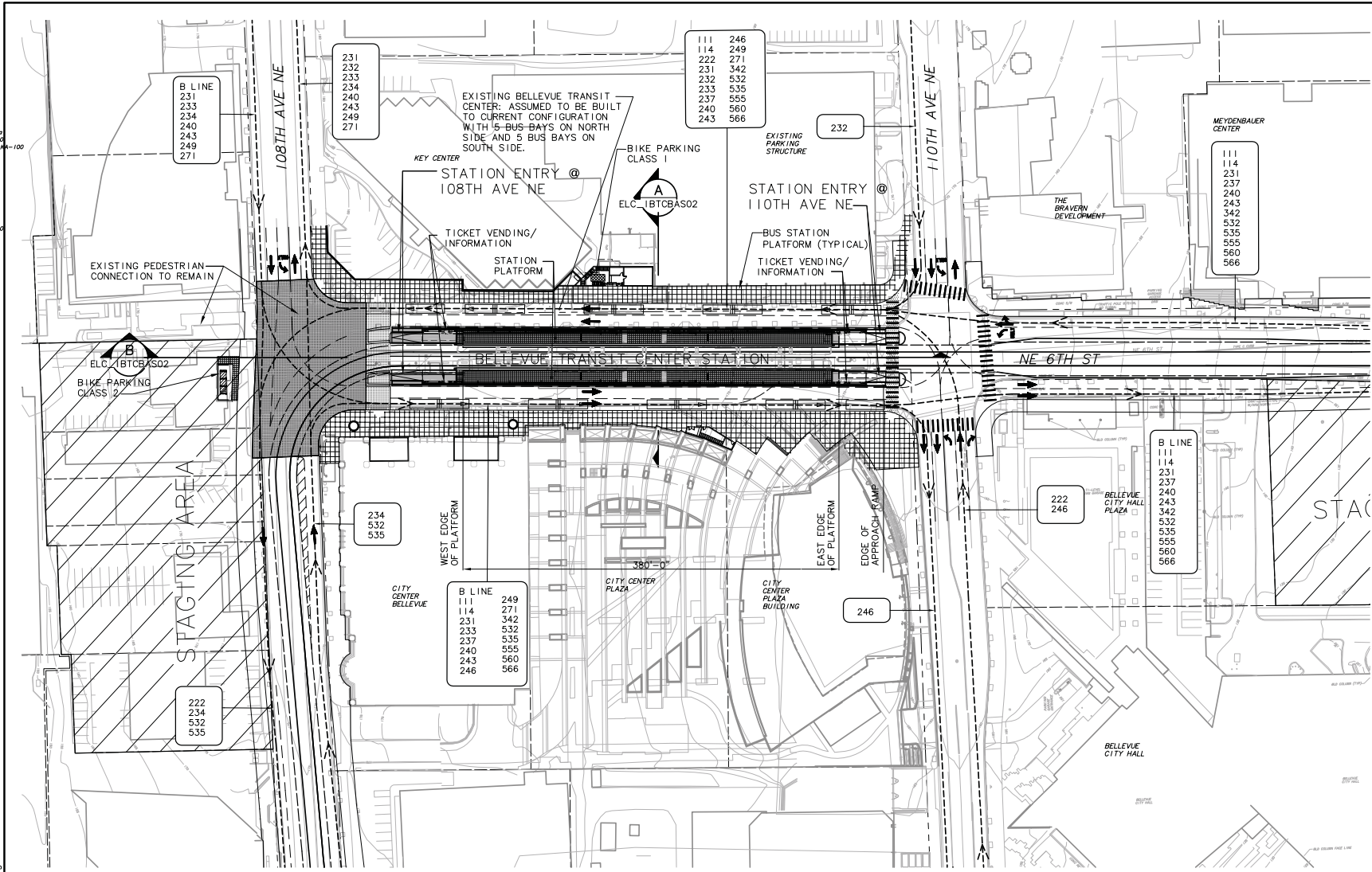
SOUNDTRANSIT
 Date:

Scale: AS NOTED
 Filename: ELC_1B08AAX01.dwg
 Contract No.:
 Date: 07/30/10

LINK LIGHT RAIL PROJECT
EAST CORRIDOR
 SEGMENT C - ALT C11A (PREFERRED)
 108TH STATION
 SITE SECTIONS

Drawing No.: B08A-AX01
 Sheet No.:
 Rev.: C-13

DWG. INFO:
 L7SCALE:
 1=1
 DATE:
 02/22/11
 C:\work\feis\ELC_IBTCBAS01.dwg
 02/22/11 16:05 : bolmar_068979

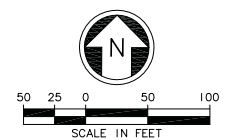


NOTES
 1. ALIGNMENT C11A

SYMBOLS KEY

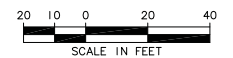
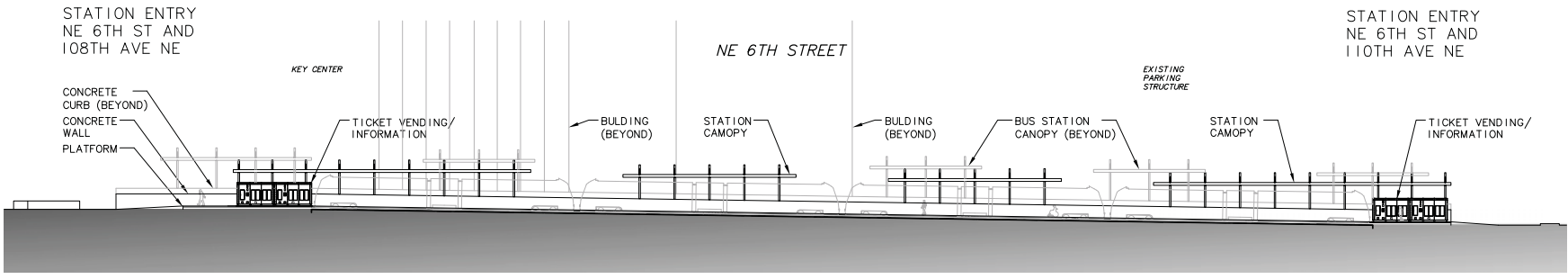
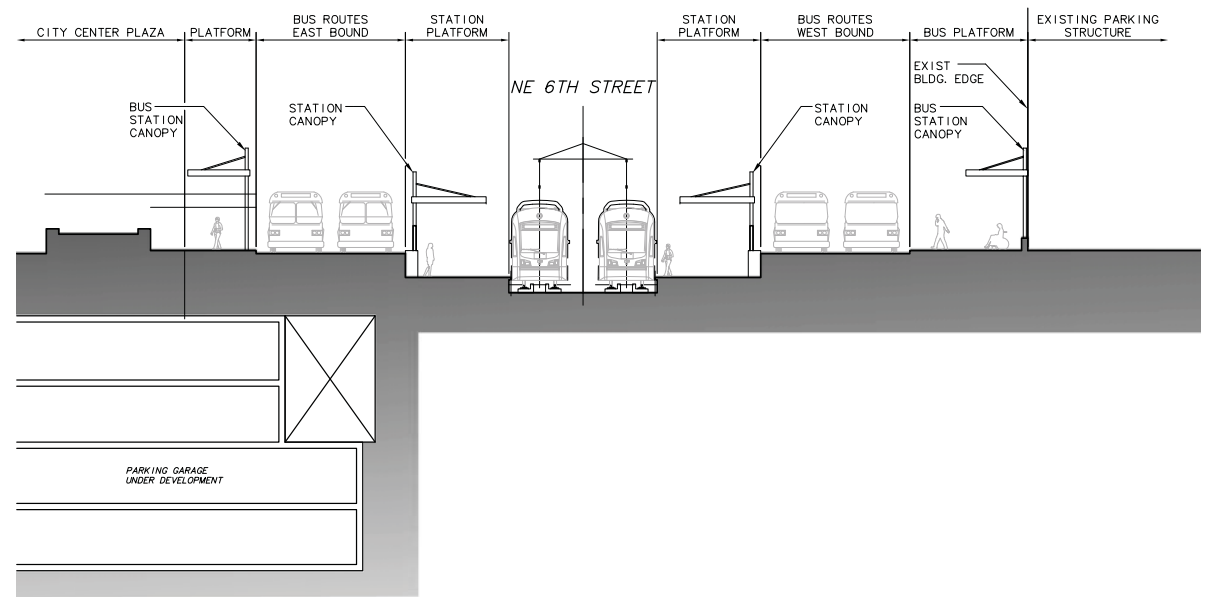
- NEW BUS STOP
- EXISTING BUS STOP
- BUS LAYOVER
- PARATRANSIT SHELTER
- PARATRANSIT STOP
- BUS ROUTE
- BIKE PARKING: CLASS 1
- BIKE PARKING: CLASS 2
- CROSSWALK
- NEW LANDSCAPE
- NEW WALKS
- NEW PLAZA
- TRACK

STATION AREA PLAN
 SCALE: 1" = 50'



Designed By:				FEIS CONCEPTUAL	CH2MHILL	HEWITT		Scale: 1" = 50'		LINK LIGHT RAIL PROJECT EAST CORRIDOR SEGMENT C - ALT C11A BTC STATION STATION AREA PLAN	Drawing No.: BTCB-AS01					
Drawn By:								Submitted:			Date:		Contract No.:		Sheet No.:	
Checked By:								Date:			Approved:		07/30/10		Rev.:	
Approved By:								Date:			Approved:		Date:		C-14	

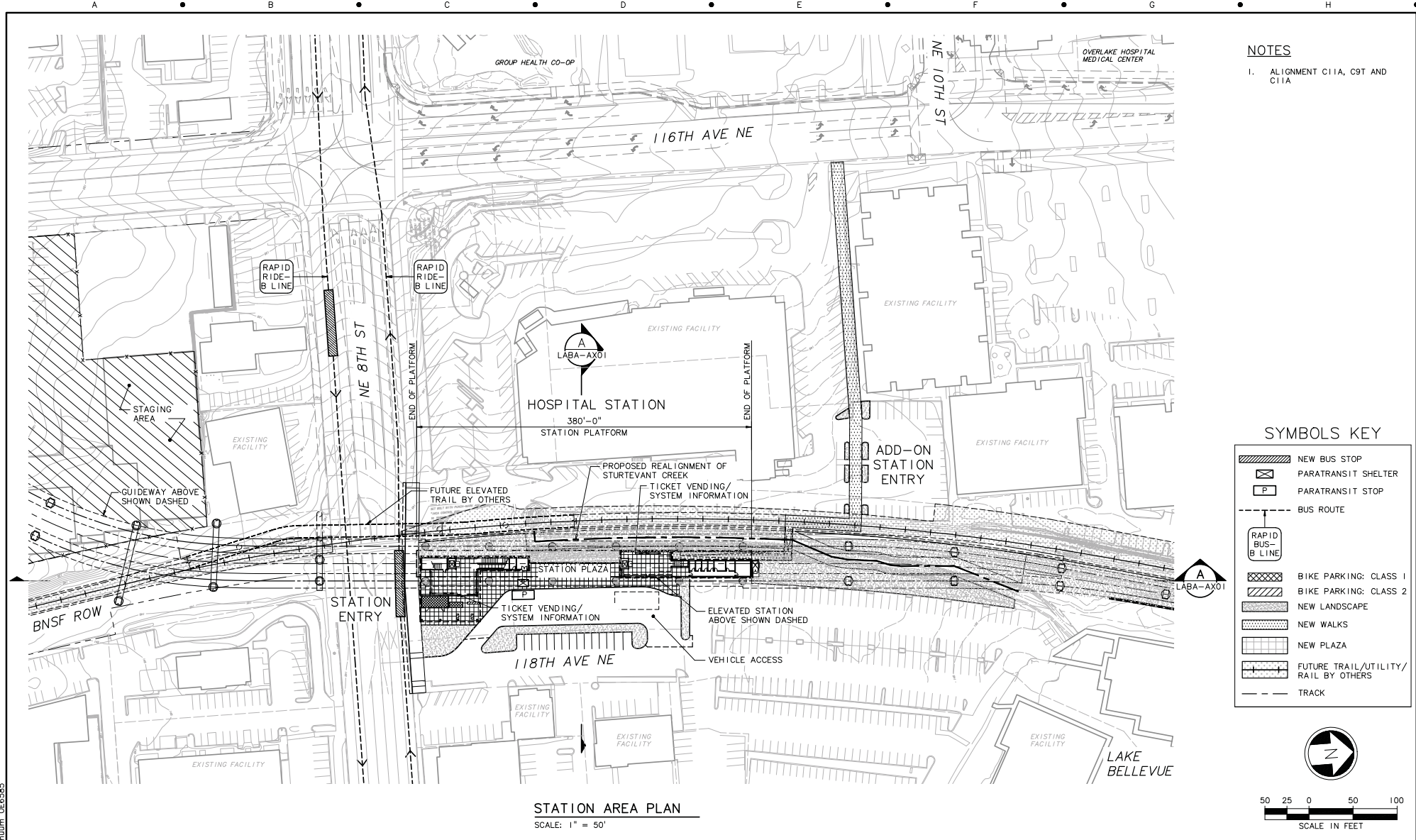
DWG INFO:
 L7SCALE:
 1/1"
 -DATE:
 -DRAWN:
 -CHECKED:
 E:\DWG\AL_100
 SUB-SOFTS
 20--225M
 -REVISED:



c:\work\area\ELC_IBTCBAS01.dwg
 10/15/10 10:47:30 bslmar DE6879

Designed By:		FEIS CONCEPTUAL	CH2MHILL	HEWITT		Scale:	AS NOTED	LINK LIGHT RAIL PROJECT EAST CORRIDOR SEGMENT C - ALT C11A BTC STATION SITE SECTIONS	Drawing No.:		BTCB-AX01
Drawn By:						Filename:	ELC_IBTCBAS01.dwg		Sheet No.:		Rev.:
Checked By:						Contract No.:			C-15		
Approved By:						Submitted:	Date:		Approved:	Date:	07/30/10
No.	Date	Dan.	Chk.	App.	Revisions						

DWG. LINE:
 1=4
 L1SCALE:
 1"=40'
 AREA:
 -Allcont
 -Overlapp
 ELC.L171_CA
 ELC.L171_CM
 ELC.L171_LP
 ELC.L171_SP
 ELC.N12_AG
 ELC.N12_AS
 S18-FE1S
 20-2346
 x0528on
 x0528w
 x0528f
 x0531on
 x0531w
 x0531f
 x1405_chm
 x1405cont



NOTES
 1. ALIGNMENT C11A, C9T AND C11A

SYMBOLS KEY

- NEW BUS STOP
- PARATRANSIT SHELTER
- PARATRANSIT STOP
- BUS ROUTE
- RAPID RIDE-B LINE
- BIKE PARKING: CLASS 1
- BIKE PARKING: CLASS 2
- NEW LANDSCAPE
- NEW WALKS
- NEW PLAZA
- FUTURE TRAIL/UTILITY/RAIL BY OTHERS
- TRACK

LABA-AX01

50 25 0 50 100
 SCALE IN FEET

STATION AREA PLAN
 SCALE: 1" = 50'

c:\work\feis\segment_c\c9t-main\ELC_01\LABAAS01.dwg
 06/08/11 15:13 khum CE6585

Designed By:	
Drawn By:	
Checked By:	
Approved By:	

FEIS
 CONCEPTUAL

CH2MHILL



TBI Group
 807 General Avenue - Suite 4100
 Seattle WA 98104 1870 USA
 tel 206.281.8000
 fax 206.281.8000



Scale: 1"=50'
 Filename: ELC_ILABAAS01.dwg
 Contract No.:
 Date: 07/30/10

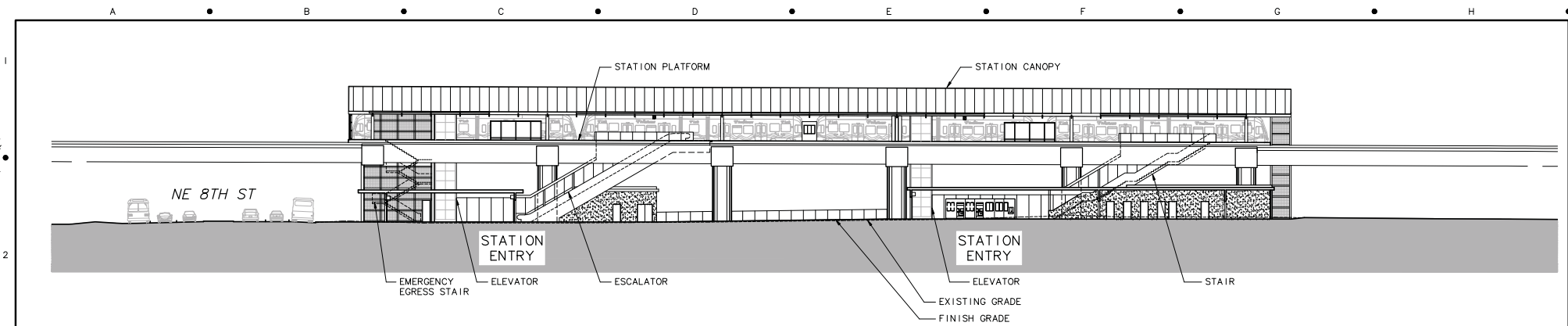


LINK LIGHT RAIL PROJECT
 EAST CORRIDOR
 SEGMENT C - ALTS C11A, C9T, C9A
 HOSPITAL STATION
 STATION AREA PLAN

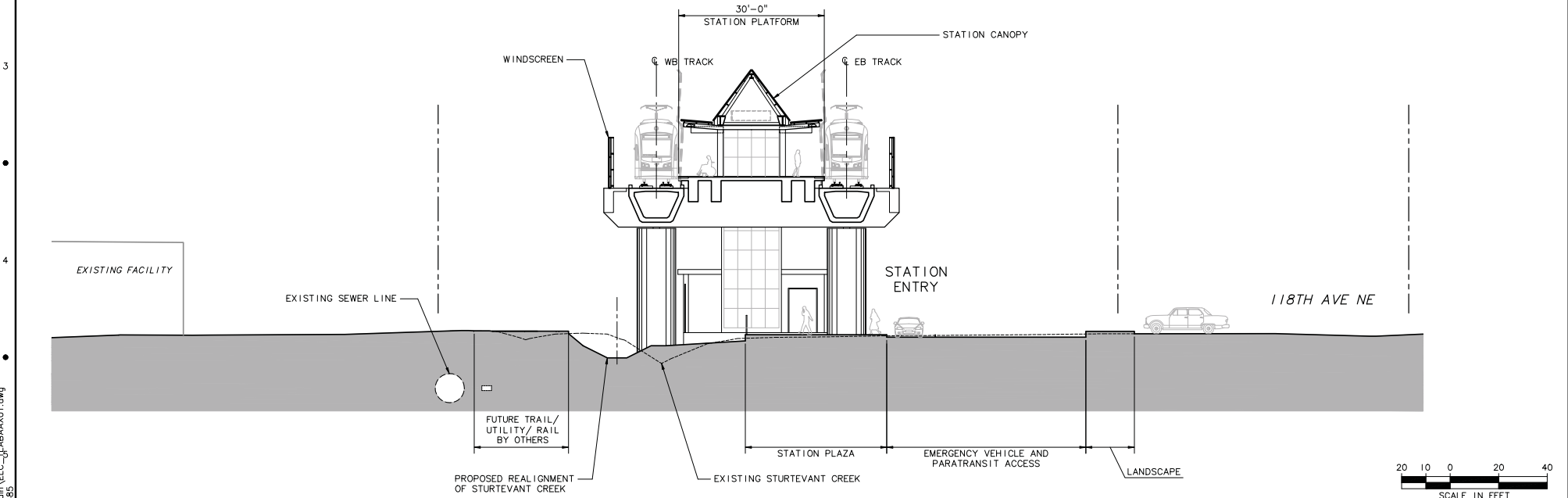
Drawing No.: LABA-AS01
 Sheet No.: Rev.:
 C-16

No.	Date	Dsn.	Chk.	App.	Revisions

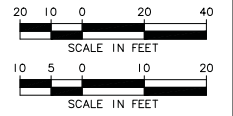
DWG. LINE:
 LISCALE:
 1"=1'
 AREA:
 -Alto:
 -Overl:
 E.C. 171, SP
 E.C. 112, AX
 SIB-112, 20-22, 34
 -112, 34



SITE SECTION A
 SCALE: 1" = 20'
 LABA-AX01



SITE SECTION B
 SCALE: 1" = 10'
 LABA-AX01



c:\work\feis\segment_c\c91-main\ELC_01-ABAA01.dwg
 06/08/11 14:57 : khuum 06585

No.	Date	Dsn.	Chk.	App.	Revisions

FEIS CONCEPTUAL	Designed By:			SB Group 605 Central Avenue - Suite 1400 Seattle WA 98104 1820 USA tel 206.381.9001 fax 206.381.9006		Scale:	AS NOTED	LINK LIGHT RAIL PROJECT EAST CORRIDOR SEGMENT C - ALTS C11A, C9T, C9A HOSPITAL STATION SITE SECTIONS	Drawing No.:	LABA-AX01
	Drawn By:					File Name:	ELC_ILABAA01.dwg		Sheet No.:	Rev.:
	Checked By:					Contract No.:				
	Approved By:					Date:	07/30/10			
Submitted:	Date:									

