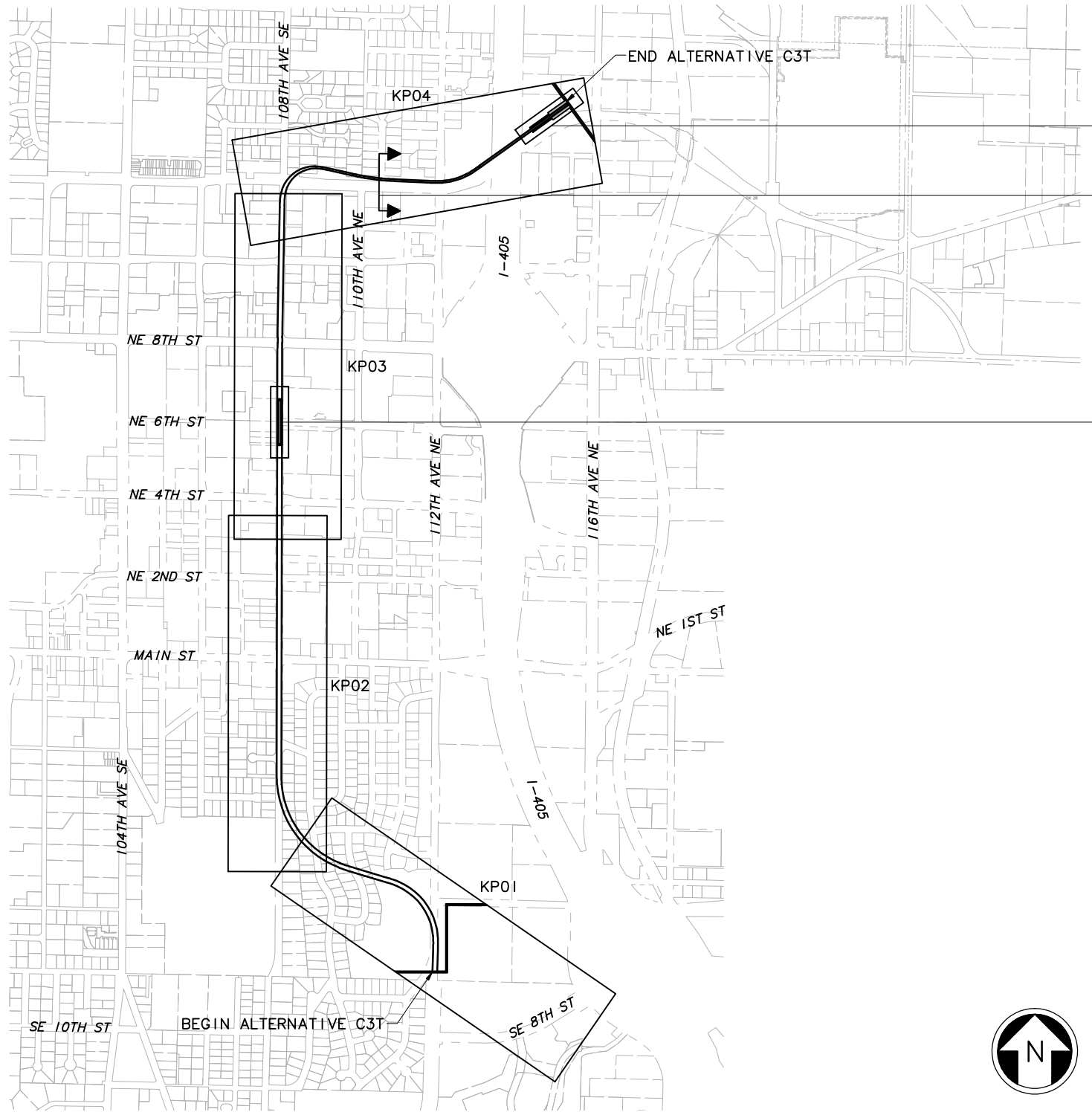


DWG. INFO:
 LTSCALE:
 1=1
 XREFs:
 -Attach:
 -Overlay:
 ELC_C3T_B2A_KA-100
 ZC-2234H
 x0222r
 x0225r
 x0228r
 x0231r
 x0522r
 x0525r
 x0528r
 x0531r
 x0534r
 x0831r
 x0834r
 -Unresolved:



ASHWOOD/HOSPITAL STATION

CROSS SECTION LOOKING EAST, SHEET #KX02

BELLEVUE TRANSIT CENTER STATION



c:\work\feis\segment_c\c3t\ELC\C3T_GZ05.dwg
 04/20/11 11:15 : khuum 0E6585

No.	Date	Dsn.	Chk.	App.	Revisions

Designed By:
 Drawn By:
 Checked By:
 Approved By:

**FEIS
 CONCEPTUAL**

CH2MHILL
 IN ASSOCIATION WITH
PARSONS & INCA
 ENGINEERS INC.

Submitted: _____ Date: _____
 Approved: _____ Date: _____

SOUNDTRANSIT

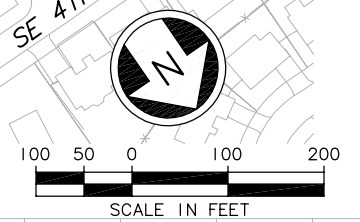
Scale: NTS
 Filename: ELC\C3T_GZ05.dwg
 Contract No.: EL_SEG_C

EAST LINK PROJECT
 SEGMENT C: C3T-B2A OPTION
 ALTERNATIVE C3T

KEY PLAN

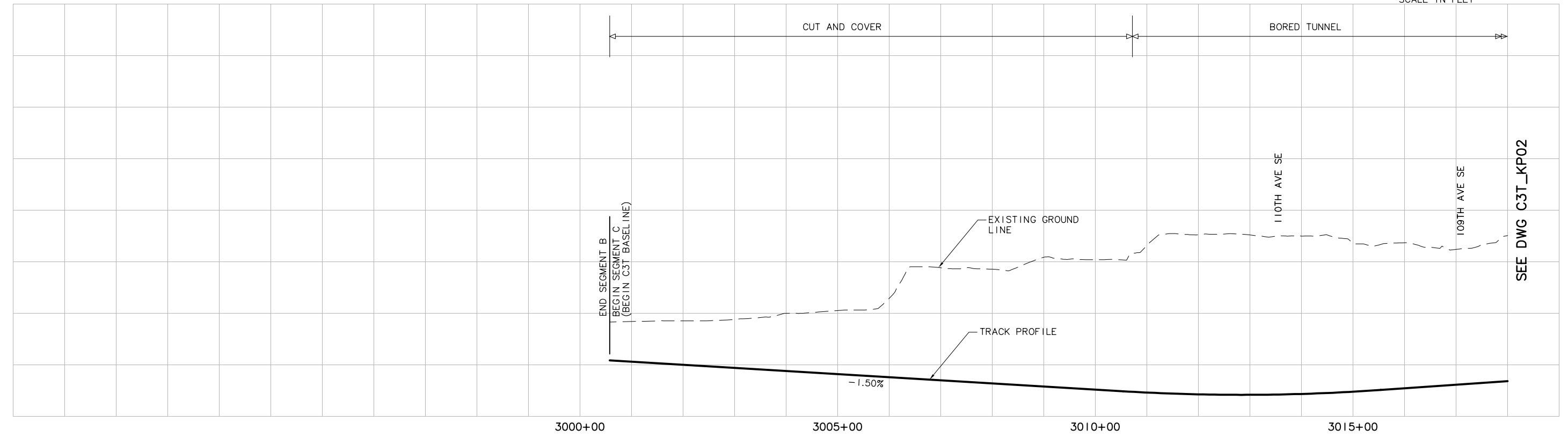
Drawing No.: C3T-GZ05
 Sheet No.: _____ Rev.: _____
C-67

XREF'S
 Resolved
 ELC_C3T_CM
 ELC_C3T_U0
 ELC_C3T_KA
 REG-DCON
 ZG-2234H
 ZG-G10010
 x0225rx
 x0225sf
 x0228rx
 x0228sf
 x0231rx
 x0231sf
 x0525rx
 x0525sf
 x0528rx
 x0528sf
 x0531rx
 x0531sf
 x0831rx
 x0831sf
 Unresolved
 St_Names_E_4
 LTSCALE
 1=1



SEE DWG C3T_KP02

SEE DWG C3T_KP02



SEE DWG C3T_KP02

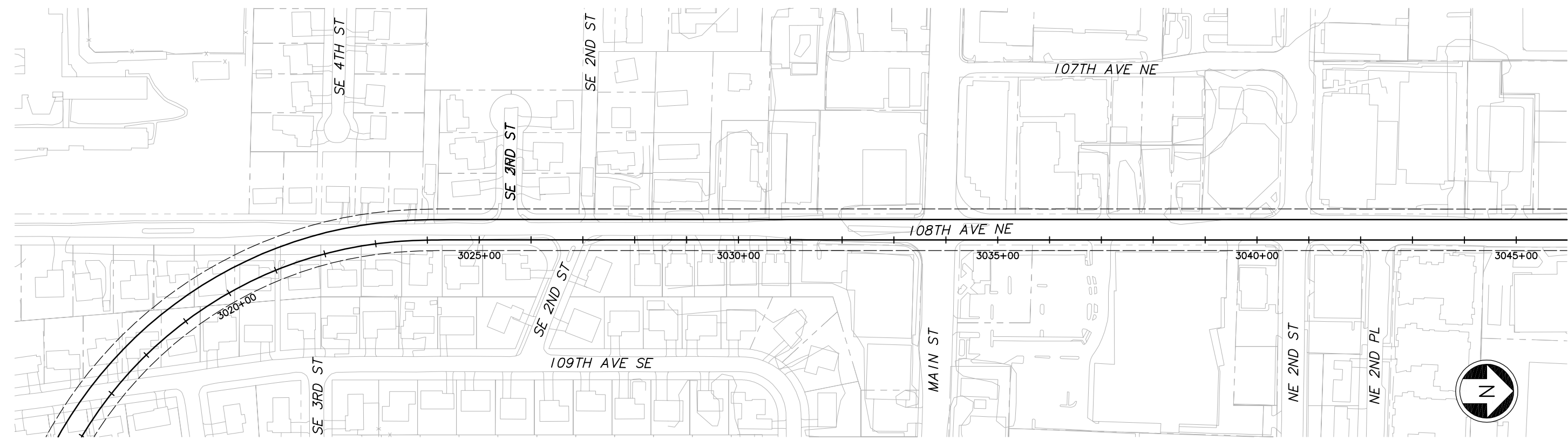
c:\work\ELC\C3T_KP01.dwg
 10/16/08 10:08 : eackerm OE5396

No.	Date	Dsn.	Chk.	App.	Revisions

FEIS CONCEPTUAL	CH2MHILL <small>IN ASSOCIATION WITH</small> PARSONS & INCA <small>ENGINEERS INC.</small>			Scale: H: 1"=100'; V: 1"=25'	EAST LINK PROJECT SEGMENT C: C3T-B2A OPTION ALTERNATIVE C3T TRACK PLAN & PROFILE	Drawing No.:
	Submitted:	Date:		Approved:		Date:
				EL_SEG_C		C-68

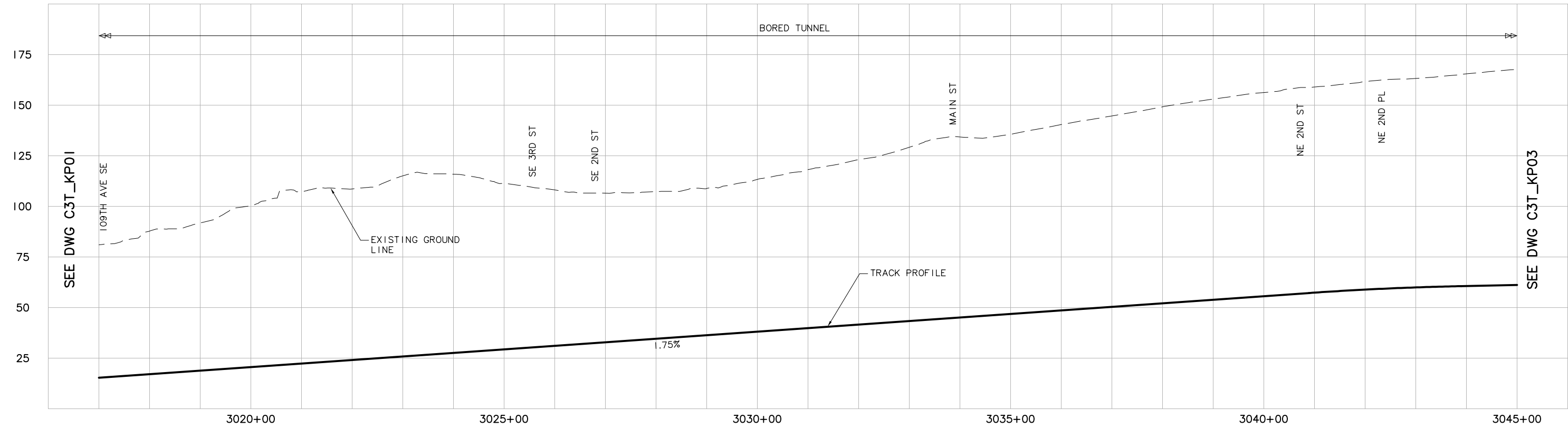
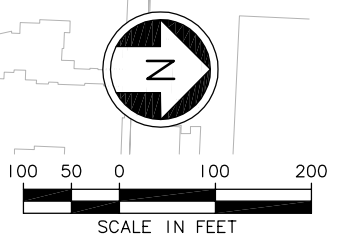
XREF'S
 Resolved
 ELC_C3T_CM
 ELC_C3T_KA
 ELC_C3T_KJ
 REG-DCON
 ZG-2234H
 ZG-G10010
 x0225rx
 x0225sf
 x0228rx
 x0228sf
 x0231rx
 x0231sf
 x0525rx
 x0525sf
 x0528rx
 x0528sf
 x0531rx
 x0531sf
 x0831rx
 x0831sf
 Unresolved
 St_Names_E_44

LTSKALE
 1"=1'



SEE DWG C3T_KP01

SEE DWG C3T_KP03



SEE DWG C3T_KP01

SEE DWG C3T_KP03

c:\work\ELC\C3T_KP02.dwg
 10/16/08 10:08 : eackerm OE5396

No.	Date	Dsn.	Chk.	App.	Revisions

Designed By:
 Drawn By:
 Checked By:
 Approved By:

**FEIS
 CONCEPTUAL**

CH2MHILL
 IN ASSOCIATION WITH
PARSONS & INCA
 ENGINEERS INC.

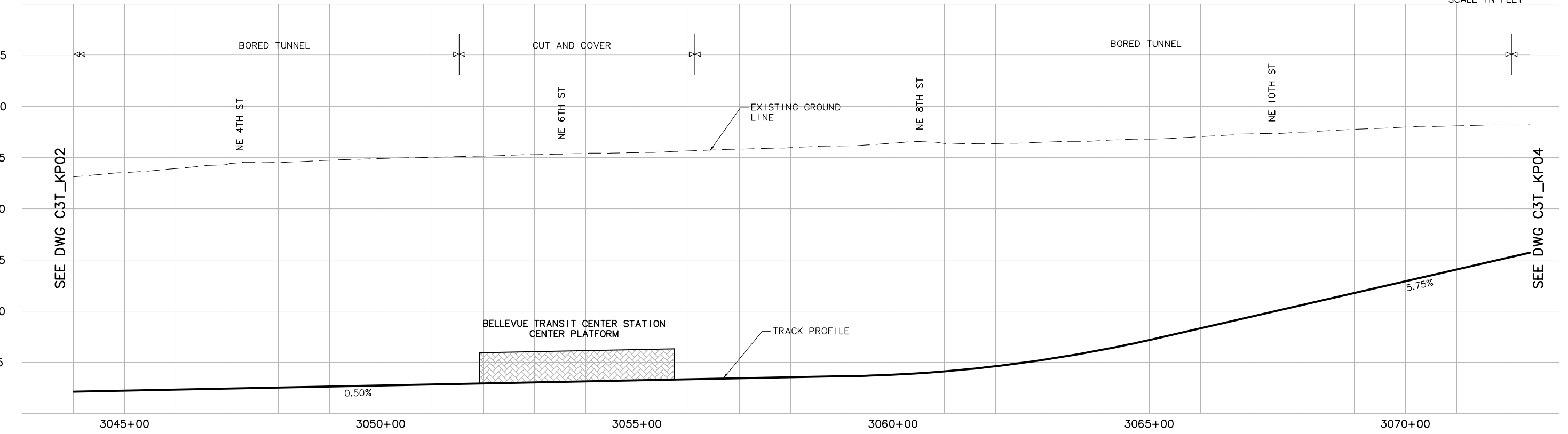
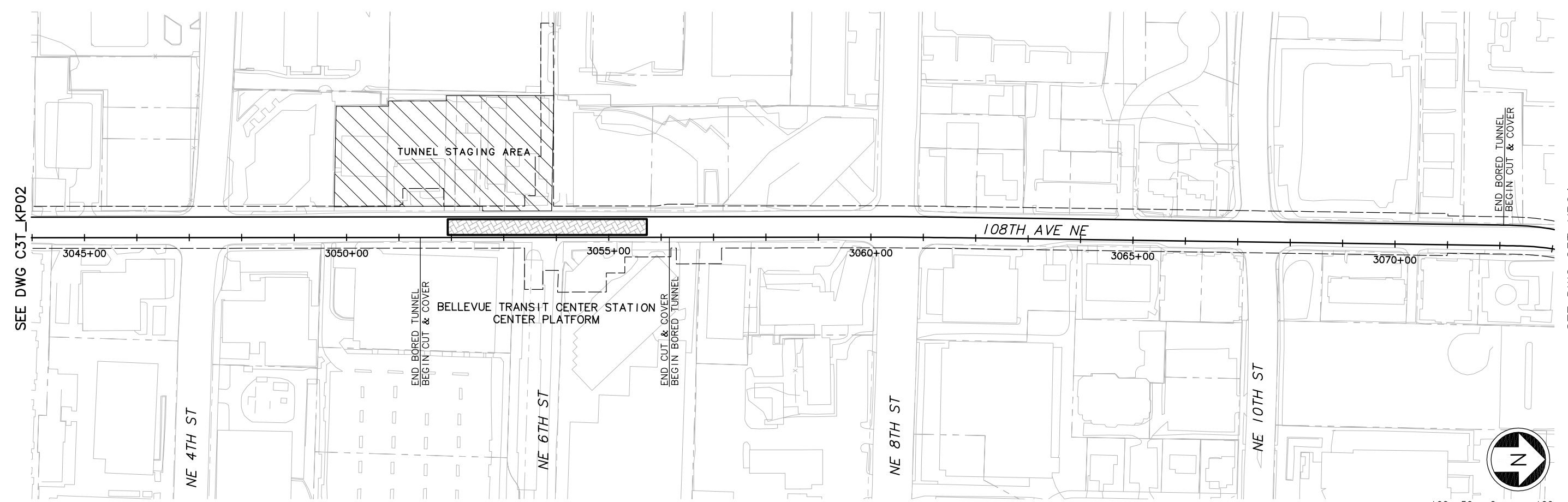
Submitted: _____ Date: _____
 Approved: _____ Date: _____

Scale:
 H: 1"=100'; V: 1"=25'
 Filename:
 ELC\C3T_KP02.dwg
 Contract No.:
 EL_SEG_C

EAST LINK PROJECT
SEGMENT C: C3T-B2A OPTION
 ALTERNATIVE C3T
 TRACK PLAN & PROFILE

Drawing No.: **C3T-KP02**
 Sheet No.: _____ Rev.: _____
C-69

XREF'S
 Resolved
 ELC_C3T_CM
 ELC_C3T_UO
 ELC_C3T_KA
 REG-DCON
 ZG-2234H
 ZG-G10010
 x0225rx
 x0225sf
 x0228rx
 x0228sf
 x0231rx
 x0231sf
 x0525rx
 x0525sf
 x0528rx
 x0528sf
 x0531rx
 x0531sf
 x0831rx
 x0831sf
 Unresolved
 St_Names_E_44
 key_East
 LTSCALE
 1=1



c:\work\ELC\C3T_KP03.dwg
 10/16/08 10:09 : eackerm OE5396

No.	Date	Dsn.	Chk.	App.	Revisions

Designed By:
 Drawn By:
 Checked By:
 Approved By:

FEIS CONCEPTUAL

CH2MHILL
 IN ASSOCIATION WITH
PARSONS & INCA
 ENGINEERS INC.

Submitted: _____ Date: _____ Approved: _____ Date: _____

SOUNDTRANSIT

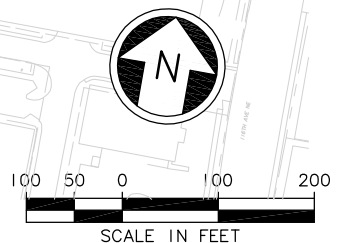
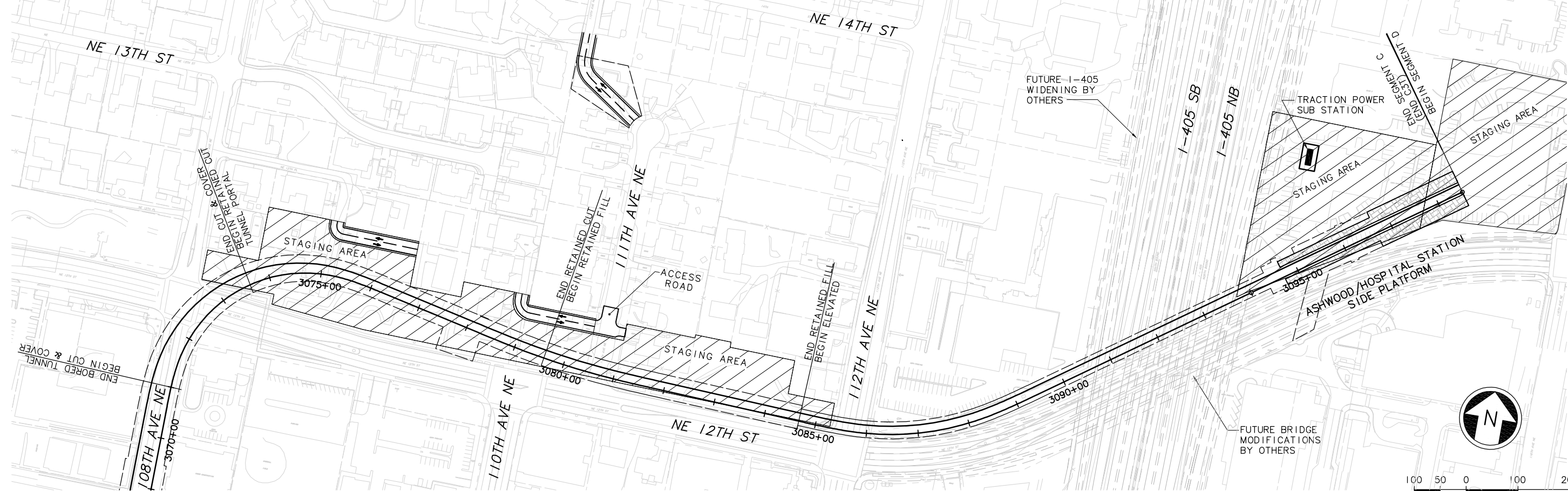
Scale:
 H: 1"=100'; V: 1"=25'
 Filename:
 ELC\C3T_KP03.dwg
 Contract No.:
 EL_SEG_C

EAST LINK PROJECT
SEGMENT C: C3T-B2A (BASELINE)
 ALTERNATIVE C3T
 TRACK PLAN & PROFILE

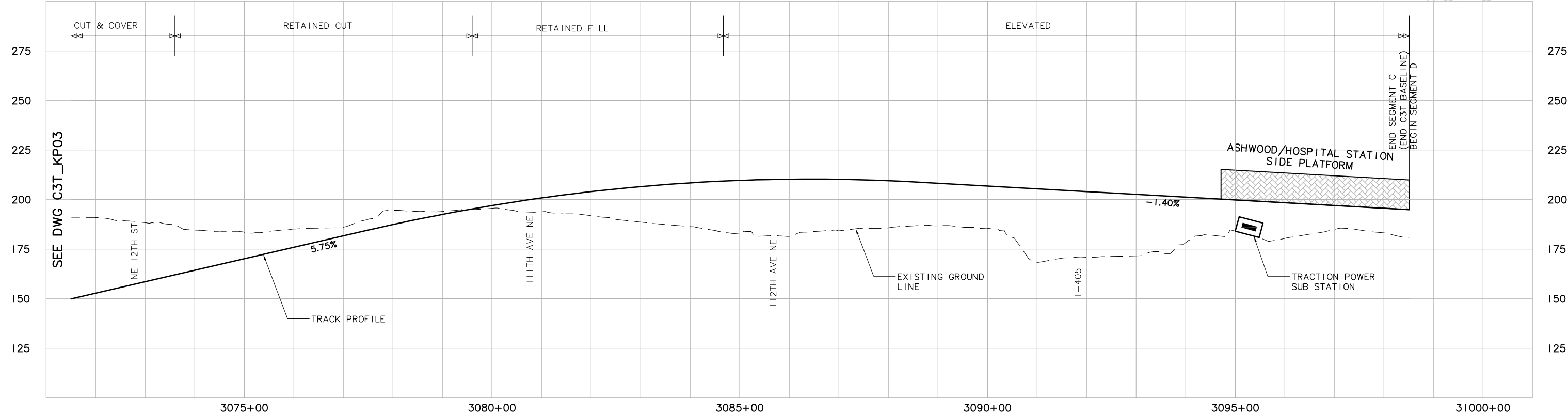
THE HALF SCALE RECORD

Drawing No.: **C3T-KP03**
 Sheet No.: **C-70**
 Rev.: _____

DWG INFO:
 L1SCALE:
 1=1
 XREFS:
 -Attach:
 -Overlay:
 ELC_C3T_KP04.dwg
 ELC_C3T_KP04.dwg
 ZG-2234H
 ZG-610010
 key_East
 x0231rx
 x0231sf
 x0531rx
 x0531sf
 x1405_cha
 -Unresolved:
 St_Names_E_40



SEE DWG C3T_KP03



c:\work\feis\ELC_IC3T_KP04.dwg
 02/22/11 16:08 : bolimaf OEG579

No.	Date	Dsn.	Chk.	App.	Revisions

Designed By:
 Drawn By:
 Checked By:
 Approved By:

**FEIS
 CONCEPTUAL**

CH2MHILL
 IN ASSOCIATION WITH
PARSONS & INCA
 ENGINEERS INC.

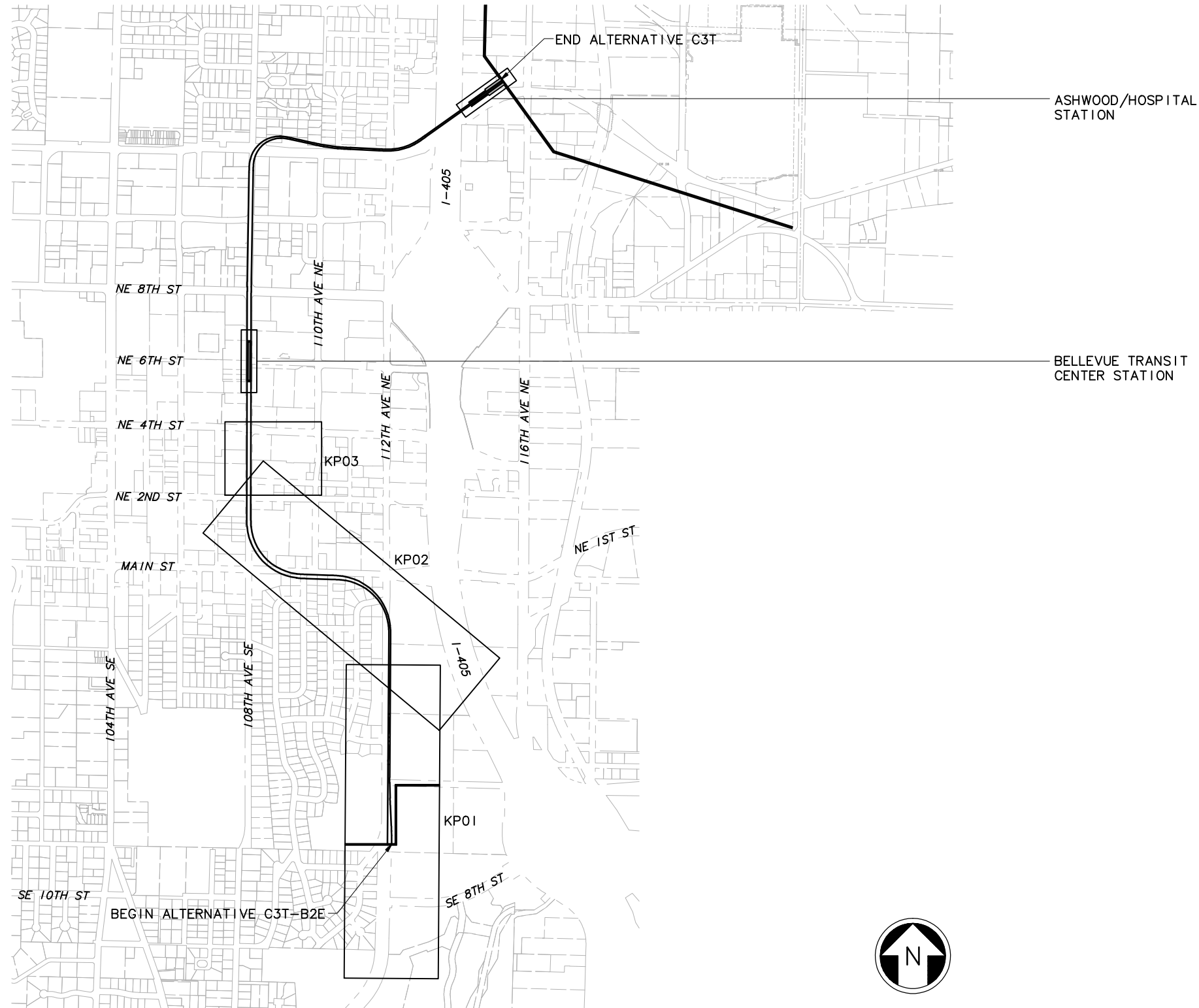
SOUNDTRANSIT

Scale:
 H: 1"=100'; V: 1"=25'
 Filename:
 ELC_IC3T_KP04.dwg
 Contract No.:
 Date: 07/30/10

LINK LIGHT RAIL PROJECT
 EAST CORRIDOR
 SEGMENT C - C3T-B2A (BASELINE)
 ALTERNATIVE C3T
 TRACK PLAN & PROFILE

Drawing No.:
C3T_-KP04
 Sheet No.:
C-71
 Rev.:

DWG. INFO:
 L1SCALE:
 1=1
 XREFs:
 -Attach:
 -Overlay:
 ELC_C3T_B2E_KA-100
 Zc-2234H
 x0222r
 x0225r
 x0228r
 x0231r
 x0522r
 x0525r
 x0528r
 x0531r
 x0534r
 x0831r
 x0834r
 -Unresolved:



c:\work\feis\segment_c\c3t\ELC\C3T2GZ05.dwg
 04/20/11 11:26 : khuum_0E6585

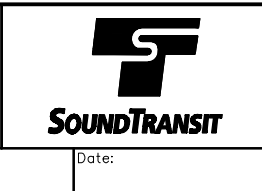
No.	Date	Dsn.	Chk.	App.	Revisions

Designed By:
 Drawn By:
 Checked By:
 Approved By:

**FEIS
 CONCEPTUAL**

CH2MHILL
 IN ASSOCIATION WITH
PARSONS & INCA
 ENGINEERS INC.

Submitted: _____ Date: _____
 Approved: _____ Date: _____



Scale: NTS
 Filename: ELC\C3T2GZ05.dwg
 Contract No.: EL_SEG_C

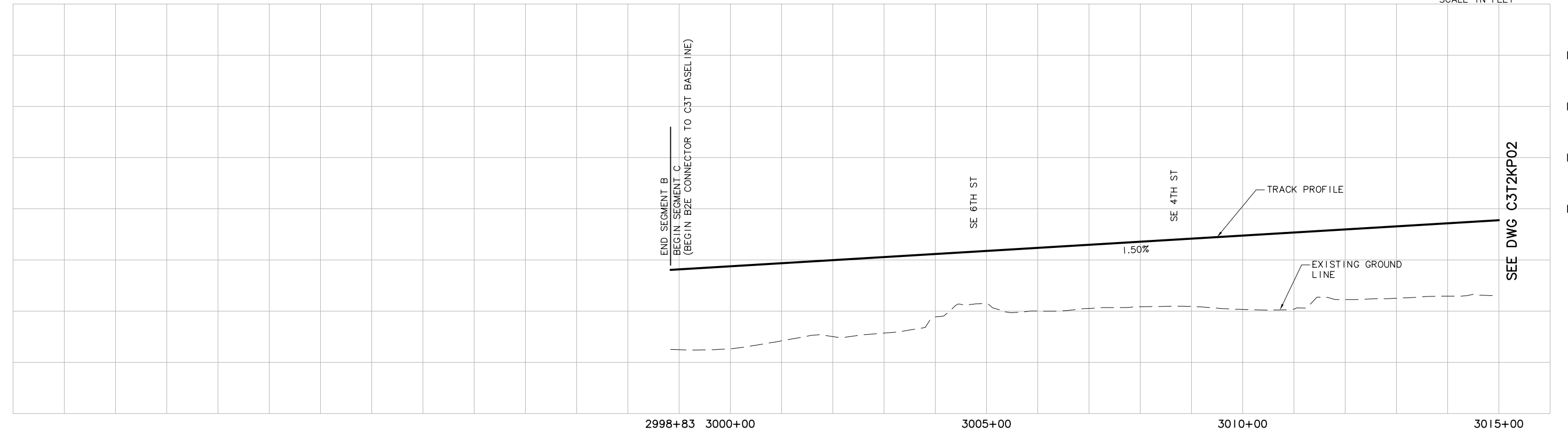
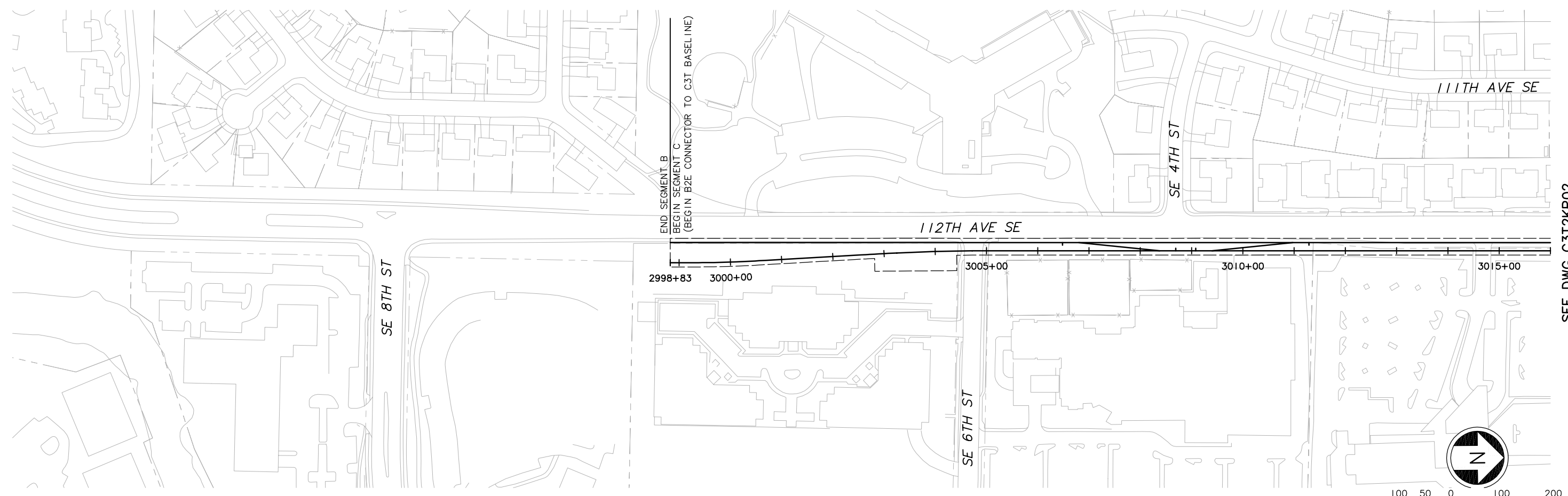
EAST LINK PROJECT
SEGMENT C: C3T-B2E OPTION
ALTERNATIVE C3T

KEY PLAN

Drawing No.: C3T2GZ05
 Sheet No.: _____ Rev.: _____
C-72



XREF'S
 Resolved
 ELC_C3T_CM
 ELC_C3T_Q0
 ELC_C3T_KA
 REG-DCON
 ZG-2234H
 ZG-G10010
 x0225rx
 x0225sf
 x0228rx
 x0228sf
 x0522rx
 x0522sf
 x0525rx
 x0525sf
 x0528rx
 x0528sf
 x0531rx
 x0531sf
 x0831rx
 x0831sf
 Unresolved
 St_Names_E_44
 key_East
 LTSCALE
 1=1



c:\work\ELC\C3T2KP01.dwg
 10/16/08 10:03 : eackerm OE5396

No.	Date	Dsn.	Chk.	App.	Revisions

Designed By:
 Drawn By:
 Checked By:
 Approved By:

**FEIS
 CONCEPTUAL**

CH2MHILL
 IN ASSOCIATION WITH
PARSONS & INCA
 ENGINEERS INC.

Submitted: _____ Date: _____
 Approved: _____ Date: _____

SOUNDTRANSIT

Scale:
 H: 1" = 100'; V: 1" = 25'
 Filename:
 ELC\C3T2KP01.dwg
 Contract No.:
 EL_SEG_C

EAST LINK PROJECT
 SEGMENT C: C3T-B2E OPTION
 ALTERNATIVE C3T
 TRACK PLAN & PROFILE

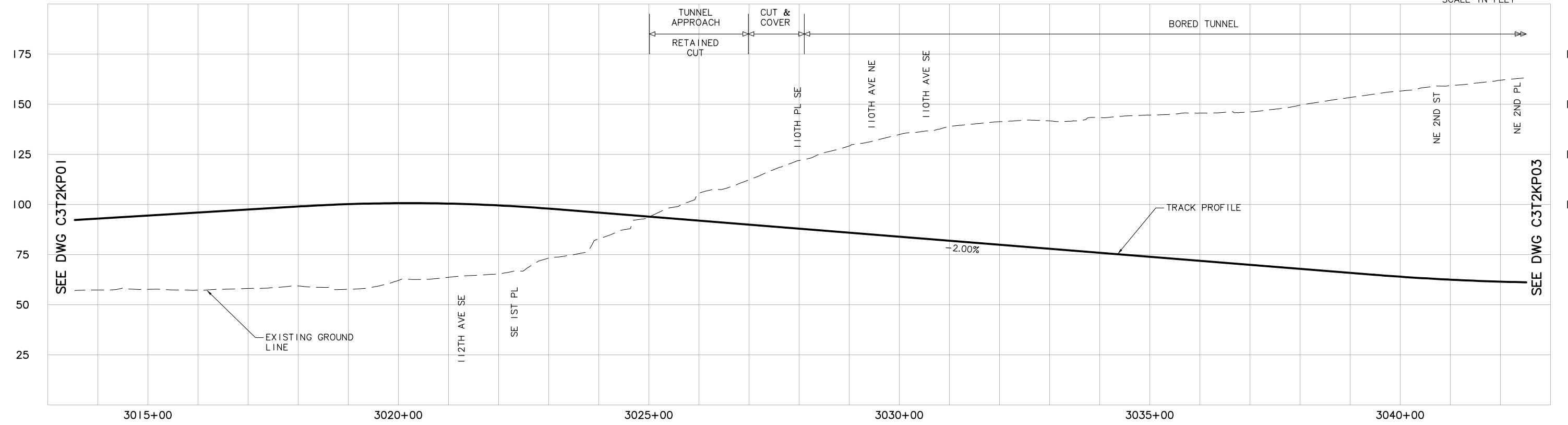
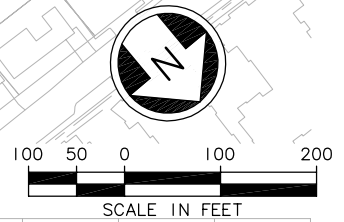
Drawing No.: **C3T2KP01**
 Sheet No.: _____ Rev.: _____
C-73

XREF'S
 Resolved
 ELC_C3T_CM
 ELC_C3T_K0
 ELC_C3T_KA
 ELC_1405_P
 REG_DCON
 ZG-2234H
 ZG-G10010
 x0225rx
 x0225sf
 x0228rx
 x0228sf
 x0522rx
 x0522sf
 x0525rx
 x0525sf
 x0528rx
 x0528sf
 x0531rx
 x0531sf
 x0831rx
 x0831sf
 Unresolved
 StNames_E_4
 key_East
 LTSCALE
 1=1

SEE DWG C3T2KP01



SEE DWG C3T2KP03



c:\work\ELC\C3T2KP02.dwg
 10/16/08 10:03 : eackerm OE5396

No.	Date	Dsn.	Chk.	App.	Revisions

Designed By:
 Drawn By:
 Checked By:
 Approved By:

**FEIS
 CONCEPTUAL**

CH2MHILL
 IN ASSOCIATION WITH
PARSONS & INCA
 ENGINEERS INC.

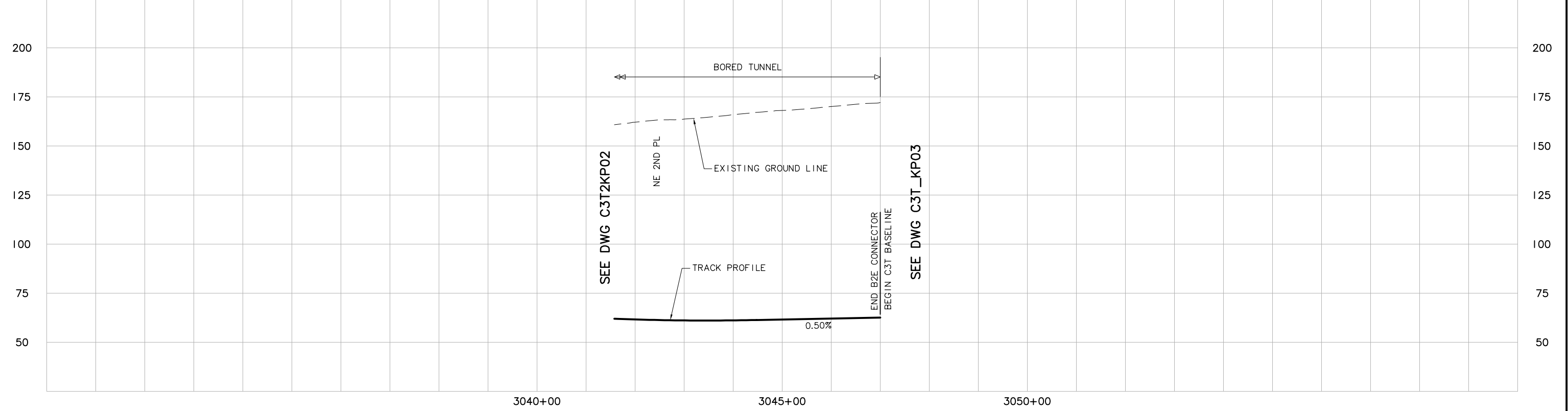
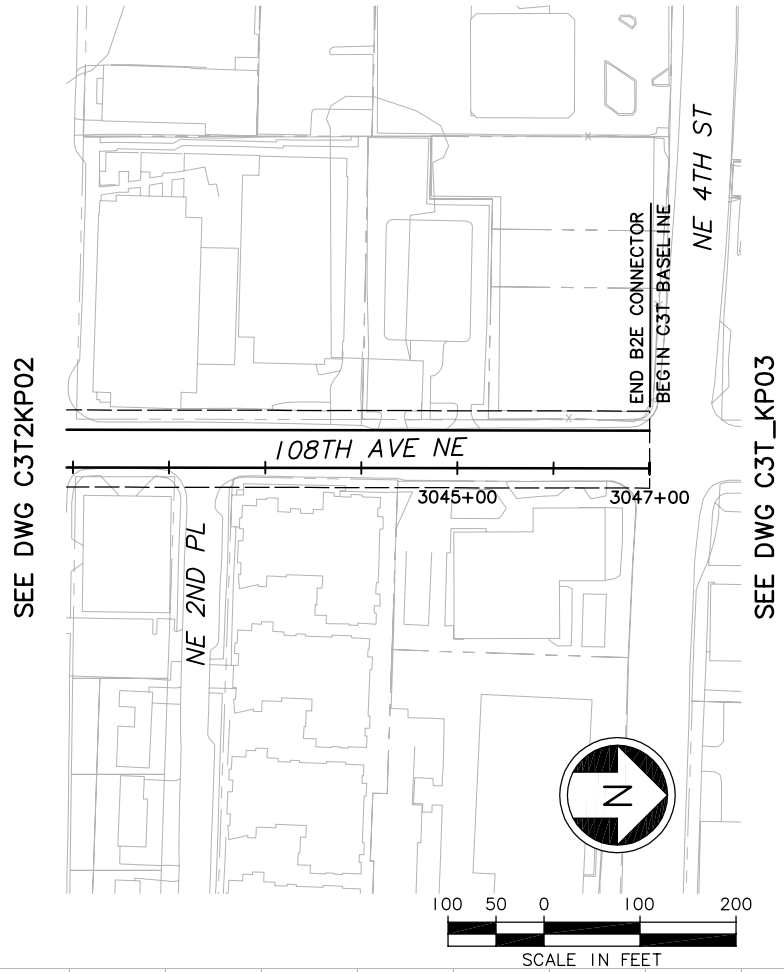
Submitted: _____ Date: _____
 Approved: _____ Date: _____

Scale:
 H: 1"=100'; V: 1"=25'
 Filename:
 ELC\C3T2KP02.dwg
 Contract No.:
 EL_SEG_C

EAST LINK PROJECT
 SEGMENT C: C3T-B2E OPTION
 ALTERNATIVE C3T
 TRACK PLAN & PROFILE

Drawing No.: **C3T2KP02**
 Sheet No.: _____ Rev.: _____
C-74

XREF'S
 Resolved
 ELC_C3T_CM
 ELC_C3T_UO
 ELC_C3T_KA
 REG-DCON
 ZG-2234H
 ZG-G10010
 x0225rx
 x0225sf
 x0228rx
 x0228sf
 x0522rx
 x0522sf
 x0525rx
 x0525sf
 x0528rx
 x0528sf
 x0531rx
 x0531sf
 x0831rx
 x0831sf
 2
 Unresolved
 St_Names_E_44
 key_East
 LTSCALE
 1=1



c:\work\ELC\C3T2KP03.dwg
 10/16/08 10:04 : eackerm OE5396

	Designed By:				
	Drawn By:				
	Checked By:				
	Approved By:				
No.	Date	Dsn.	Chk.	App.	Revisions

Designed By:
 Drawn By:
 Checked By:
 Approved By:

FEIS
 CONCEPTUAL

CH2MHILL
 IN ASSOCIATION WITH
PARSONS & INCA ENGINEERS INC.

Submitted: _____ Date: _____ Approved: _____ Date: _____

SOUNDTRANSIT

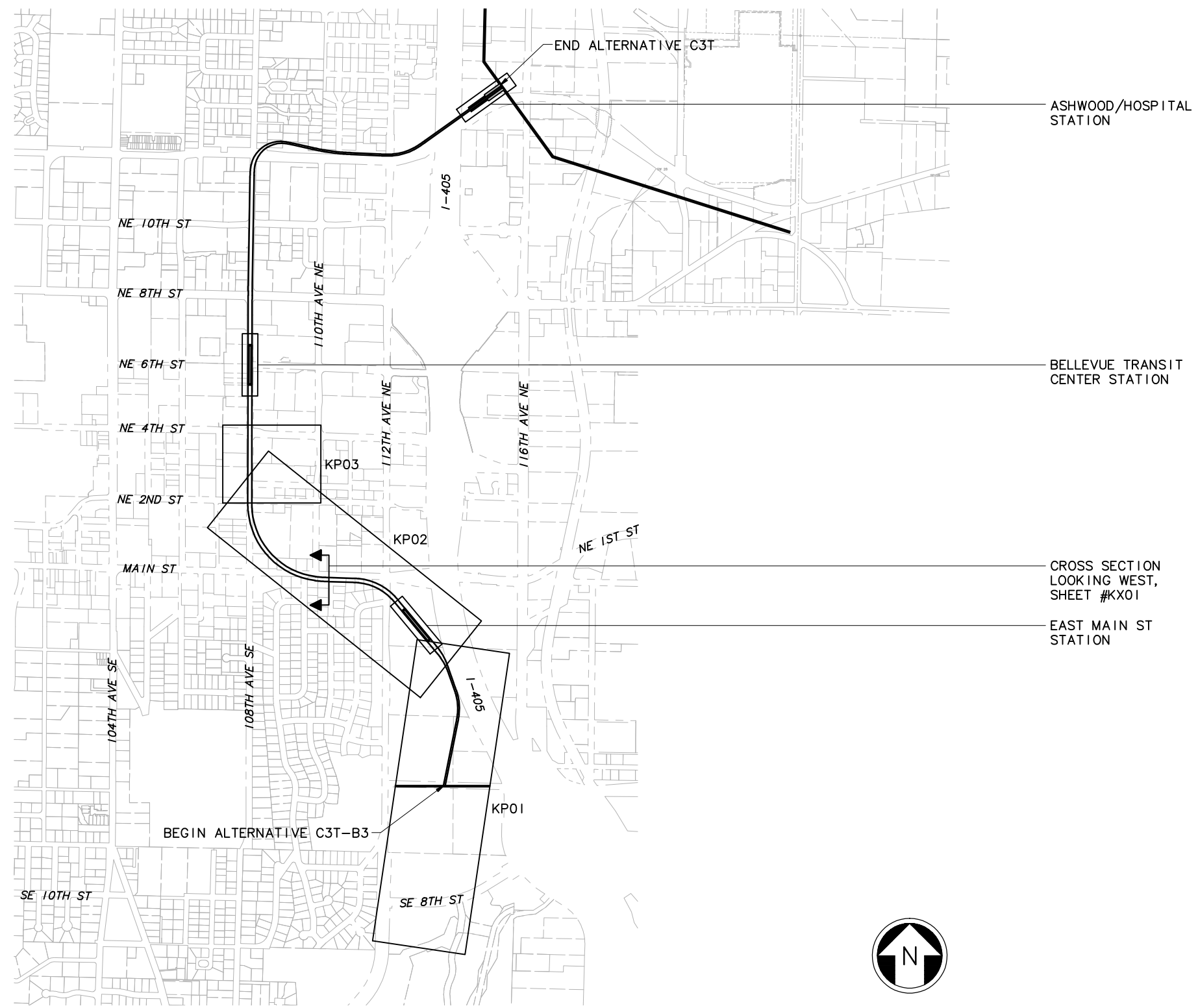
Scale:
 H: 1"=100'; V: 1"=25'
 Filename:
 ELC\C3T2KP03.dwg
 Contract No.:
 EL_SEG_C

Scale:
 H: 1"=100'; V: 1"=25'
 Filename:
 ELC\C3T2KP03.dwg
 Contract No.:
 EL_SEG_C

EAST LINK PROJECT
 SEGMENT C: C3T-B2E OPTION
 ALTERNATIVE C3T
 TRACK PLAN & PROFILE

Drawing No.: **C3T2KP03**
 Sheet No.: _____ Rev.: _____
C-75

DWG. INFO:
 LTSCALE:
 1=1
 XREFs:
 -Attach:
 -Overlay:
 ELC_C3T_B3_KA-100
 ZC-2234H
 x0222r
 x0225r
 x0228r
 x0231r
 x0522r
 x0525r
 x0528r
 x0531r
 x0831r
 x0834r
 -Unresolved:



c:\work\feis\segment_c\c3t\ELC\C3T3GZ05.dwg
 04/20/11 11:37 : khuum_0E6585

No.	Date	Dsn.	Chk.	App.	Revisions

Designed By:
 Drawn By:
 Checked By:
 Approved By:

**FEIS
 CONCEPTUAL**

CH2MHILL
 IN ASSOCIATION WITH
PARSONS & INCA
 ENGINEERS INC.

Submitted: _____ Date: _____
 Approved: _____ Date: _____

SOUNDTRANSIT

Scale: NTS
 Filename: ELC\C3T3GZ05.dwg
 Contract No.: EL_SEG_C

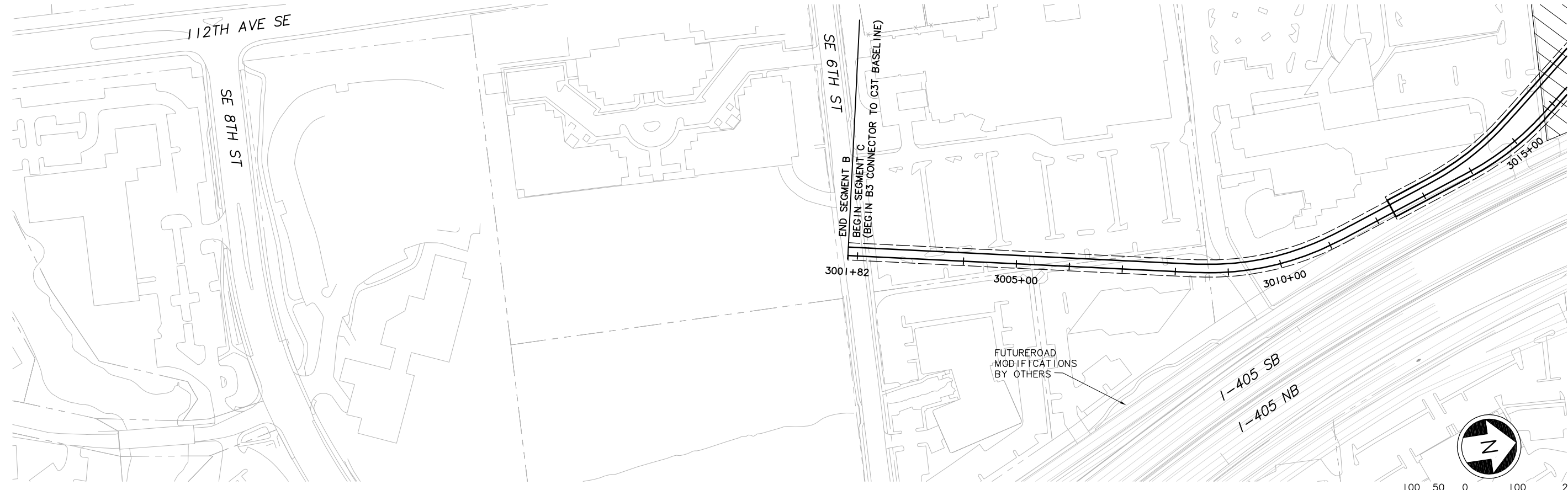
EAST LINK PROJECT
 SEGMENT C: C3T-B3 OPTION
 ALTERNATIVE C3T

KEY PLAN

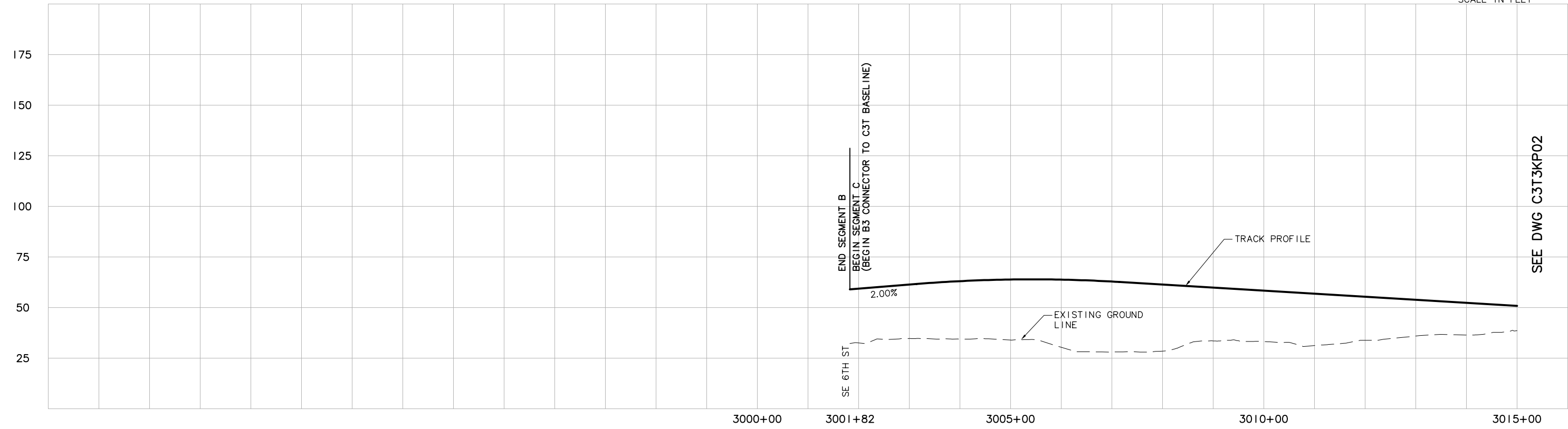
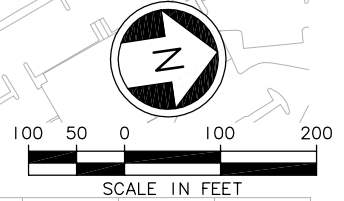
Drawing No.: C3T3GZ05
 Sheet No.: _____ Rev.: _____
C-76



XREF'S
 Resolved
 ELC_C3T_CM
 ELC_C3T_J0
 ELC_C3T_KA
 ELC_1405_P
 REG-DCON
 ZG-2234H
 ZG-G10010
 x0225rx
 x0225sf
 x0228rx
 x0228sf
 x0522rx
 x0522sf
 x0525rx
 x0525sf
 x0528rx
 x0528sf
 x0531rx
 x0531sf
 x0831rx
 x0831sf
 2
 Unresolved
 St_Names_E_44
 key_East
 LTSCALE
 1=1



SEE DWG C3T3KP02



SEE DWG C3T3KP02

c:\work\ELC\C3T3KP01.dwg
 10/16/08 10:04 : eackerm OE5396

Designed By:					
Drawn By:					
Checked By:					
Approved By:					
No.	Date	Dsn.	Chk.	App.	Revisions

FEIS CONCEPTUAL

CH2MHILL

IN ASSOCIATION WITH

PARSONS & INCA

ENGINEERS INC.

SOUNDTRANSIT

Scale: H: 1"=100'; V: 1"=25'

Filename: ELC\C3T3KP01.dwg

Contract No.: EL_SEG_C

EAST LINK PROJECT

SEGMENT C: C3T-B3 OPTION

ALTERNATIVE C3T

TRACK PLAN & PROFILE

Drawing No.: C3T3KP01

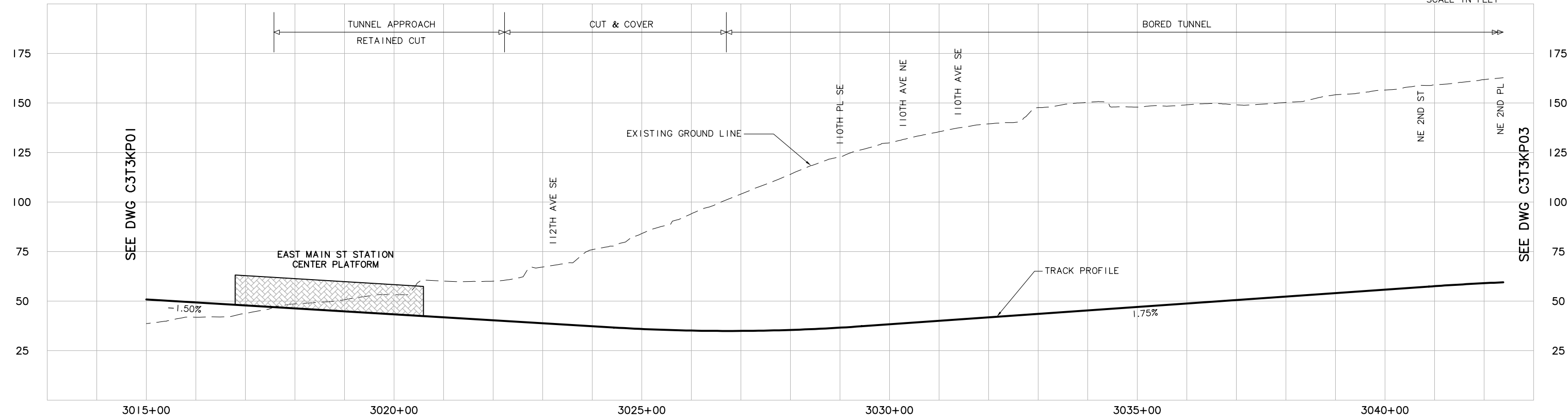
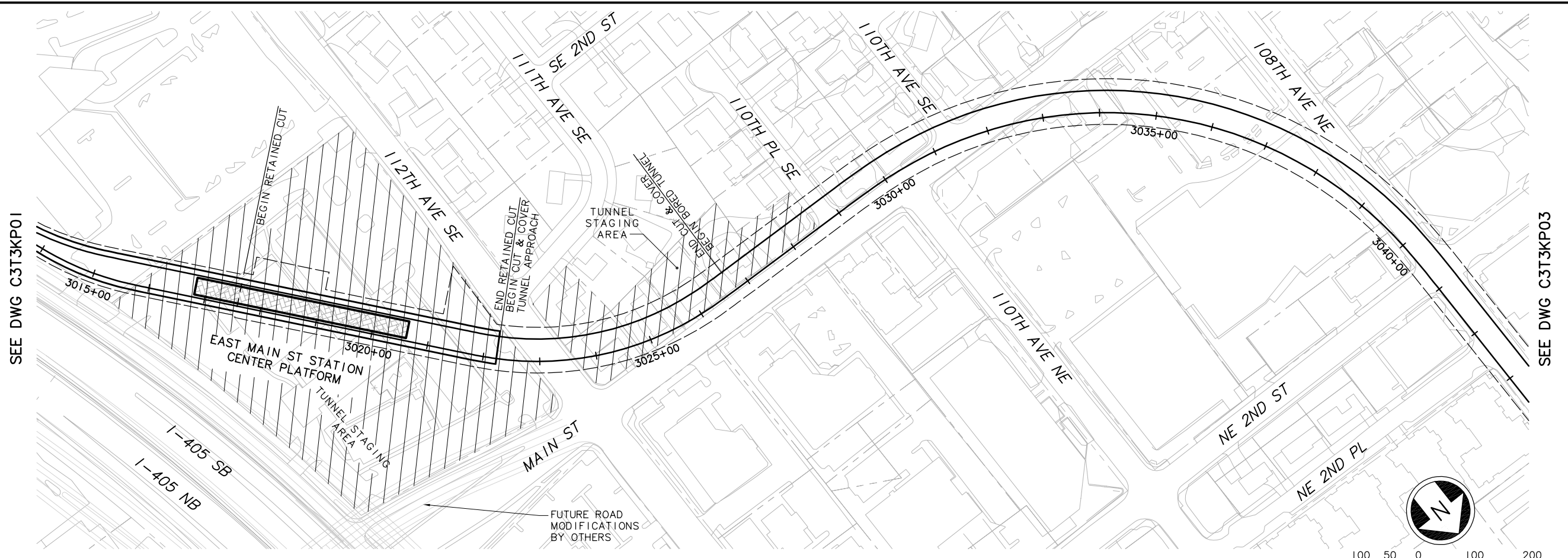
Sheet No.: C-77

Rev.:

XREF'S
 Resolved
 ELC_C3T_CM
 ELC_C3T_J0
 ELC_C3T_KA
 ELC_1405_P
 REG-DCON
 ZG-2234H
 ZG-G10010
 x0225rx
 x0225sf
 x0228rx
 x0228sf
 x0525rx
 x0525sf
 x0528rx
 x0528sf
 x0531rx
 x0531sf
 x0831rx
 x0831sf

Unresolved
 2
 St_Names_E_44
 key_East

LTSCALE
 1=1



c:\work\ELC\C3T3KP02.dwg
 10/16/08 10:05 : eackerm OE5396

Designed By:					
Drawn By:					
Checked By:					
Approved By:					
No.	Date	Dsn.	Chk.	App.	Revisions

FEIS CONCEPTUAL

CH2MHILL
 IN ASSOCIATION WITH
PARSONS & INCA
 ENGINEERS INC.

SOUNDTRANSIT

Submitted: _____ Date: _____
 Approved: _____ Date: _____

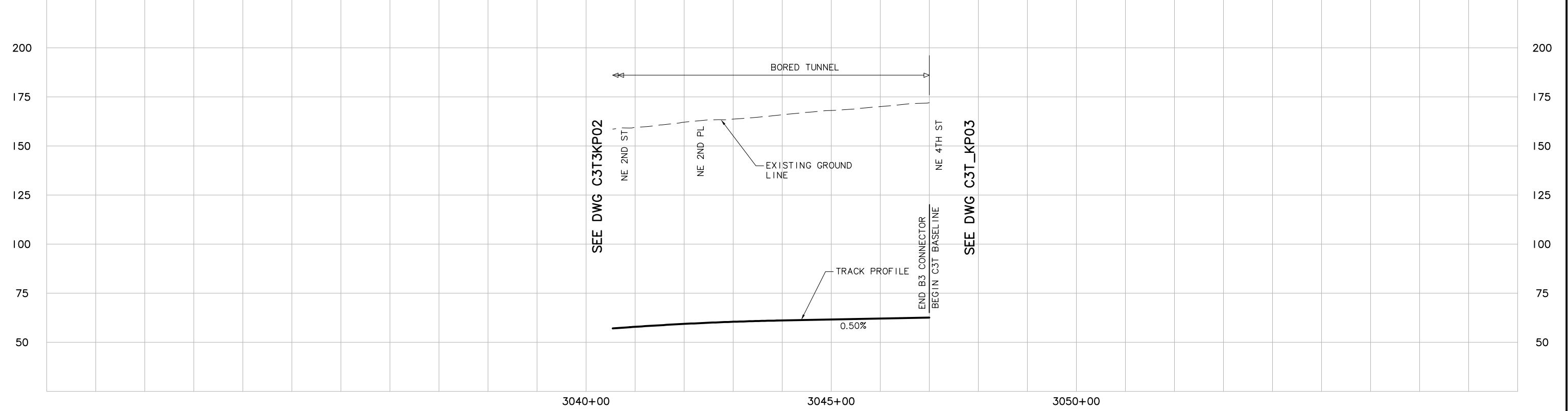
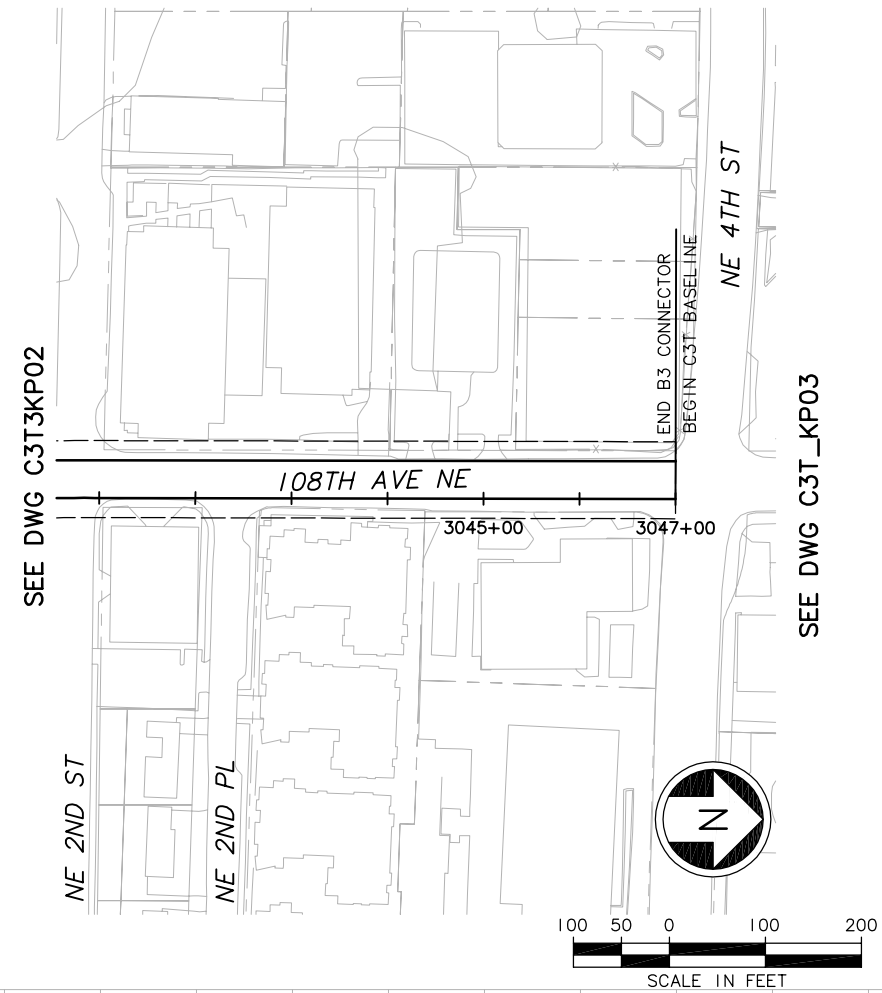
Scale:
 H: 1"=100'; V: 1"=25'
 Filename:
 ELC\C3T3KP02.dwg
 Contract No.:
 EL_SEG_C

EAST LINK PROJECT
 SEGMENT C: C3T-B3 OPTION
 ALTERNATIVE C3T
 TRACK PLAN & PROFILE

THE PRINT RECORD
 HALF SCALE

Drawing No.: **C3T3KP02**
 Sheet No.: _____ Rev.: _____
C-78

XREF'S
 Resolved
 ELC_C3T_CM
 ELC_C3T_IQ
 ELC_C3T_KA
 REG-DCON
 ZG-2234H
 ZG-G10010
 x0225rx
 x0225sf
 x0228rx
 x0228sf
 x0525rx
 x0525sf
 x0528rx
 x0528sf
 x0531rx
 x0531sf
 x0831rx
 x0831sf
 Unresolved
 2
 St_Names_E_4
 key_East
 LTSCALE
 1=1



c:\work\ELC\C3T3KP03.dwg
 10/16/08 10:05 : eackerm OE5396

Designed By:					
Drawn By:					
Checked By:					
Approved By:					
No.	Date	Dsn.	Chk.	App.	Revisions

**FEIS
 CONCEPTUAL**

CH2MHILL
 IN ASSOCIATION WITH
PARSONS & INCA
 ENGINEERS INC.

Submitted: _____ Date: _____

SOUNDTRANSIT

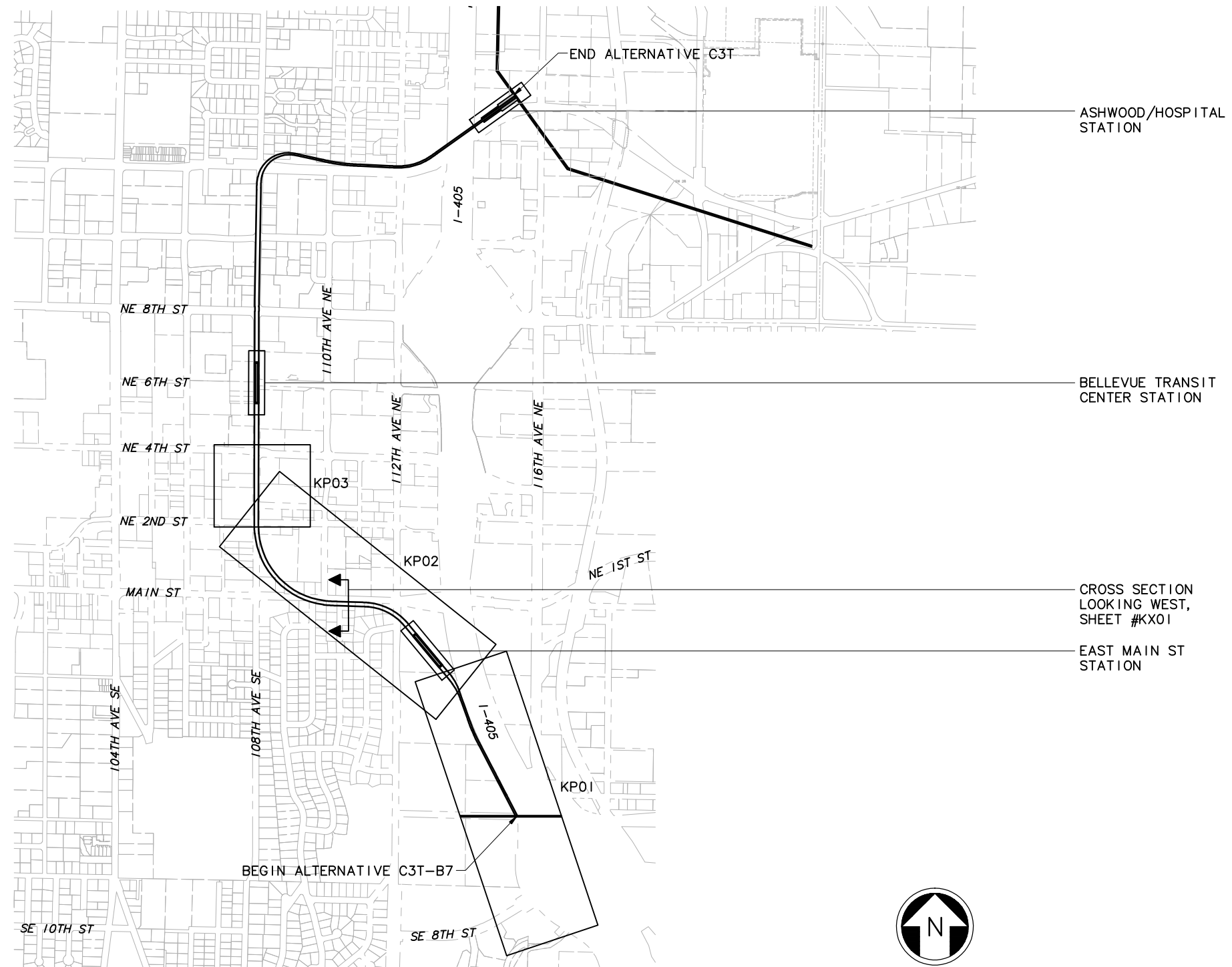
Approved: _____ Date: _____

Scale: H: 1"=100'; V: 1"=25'
 Filename: ELC\C3T3KP03.dwg
 Contract No.: EL_SEG_C

EAST LINK PROJECT
 SEGMENT C: C3T-B3 OPTION
 ALTERNATIVE C3T
 TRACK PLAN & PROFILE

Drawing No.: **C3T3KP03**
 Sheet No.: _____ Rev.: _____
C-79

DWG. INFO:
 L1SCALE:
 I=1
 XREFs:
 -Attach:
 -Overlay:
 ELC_C3T_B7_KA-100
 ZC-2234H
 x0222r
 x0225r
 x0228r
 x0231r
 x0522r
 x0525r
 x0528r
 x0531r
 x0534r
 x0831r
 x0834r
 -Unresolved:



c:\work\feis\segment_c\c3t\ELC\C3T7GZ05.dwg
 04/20/11 11:45 : khuum 0E6585

No.	Date	Dsn.	Chk.	App.	Revisions

Designed By:
 Drawn By:
 Checked By:
 Approved By:

**FEIS
 CONCEPTUAL**

CH2MHILL
 IN ASSOCIATION WITH
PARSONS & INCA
 ENGINEERS INC.

Submitted: _____ Date: _____
 Approved: _____ Date: _____

SOUNDTRANSIT

Scale: NTS
 Filename: ELC\C3T7GZ05.dwg
 Contract No.: EL_SEG_C
 Date: _____

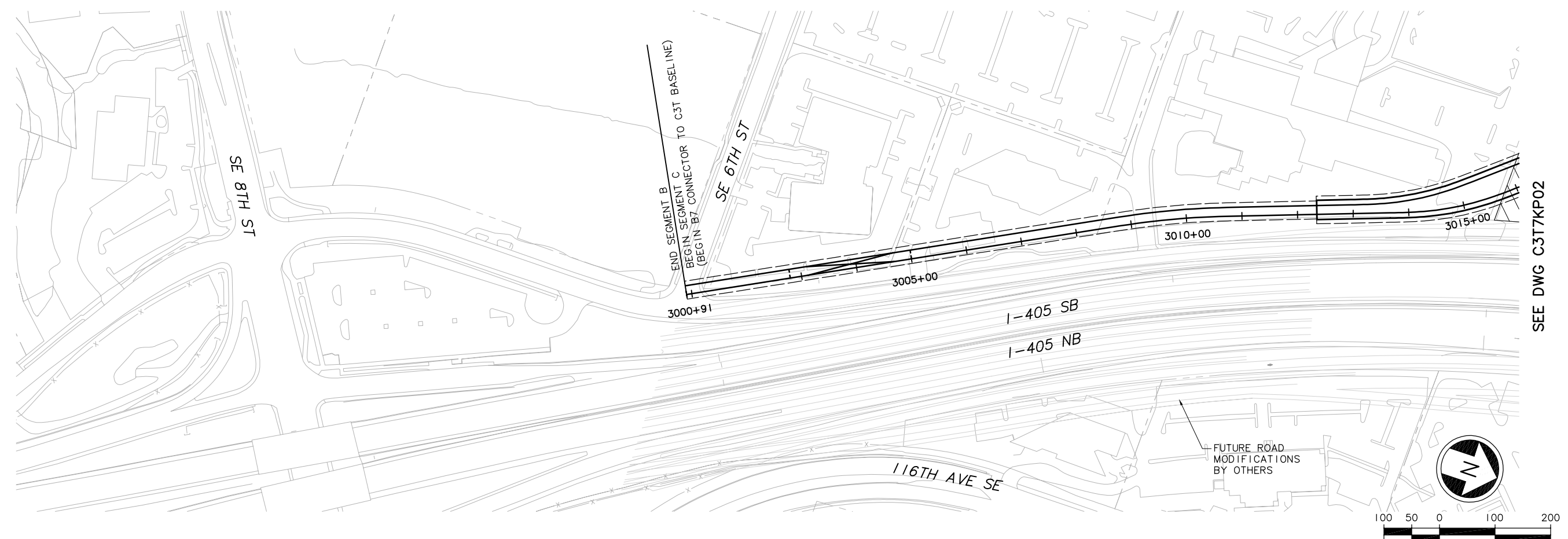
EAST LINK PROJECT
 SEGMENT C: C3T-B7 OPTION
 ALTERNATIVE C3T

KEY PLAN

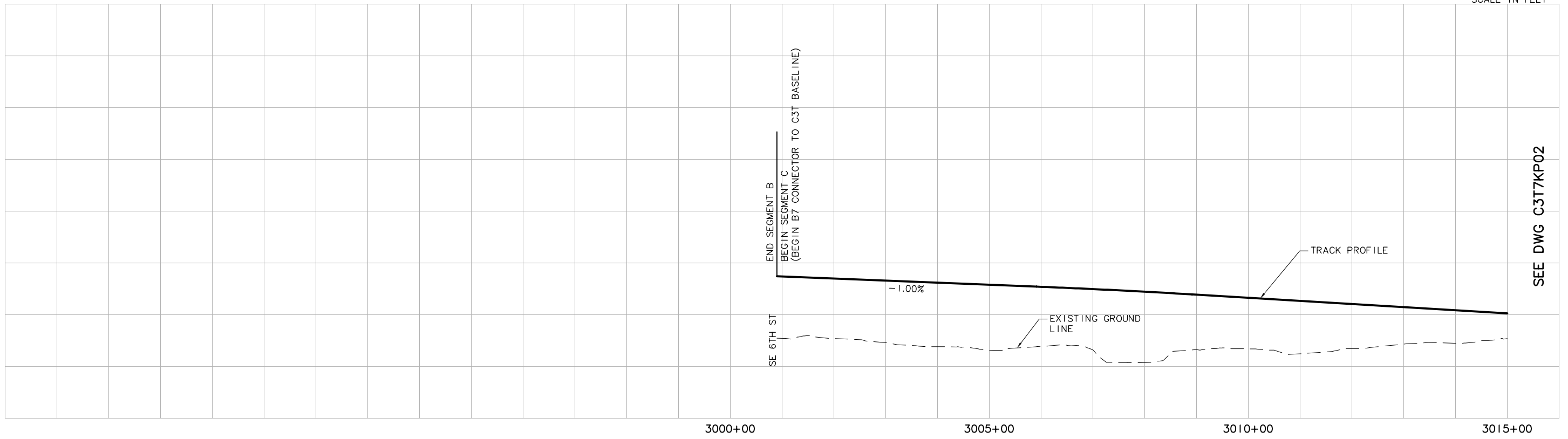
Drawing No.: C3T7GZ05
 Sheet No.: C-80
 Rev: _____



XREF'S
 Resolved
 ELC_C3T_CM
 ELC_C3T_J0
 ELC_C3T_KA
 ELC_1405_P
 REG-DCON
 ZG-2234H
 ZG-G10010
 x0225rx
 x0225sf
 x0228rx
 x0228sf
 x0525rx
 x0525sf
 x0528rx
 x0528sf
 x0531rx
 x0531sf
 x0831rx
 x0831sf
 Unresolved 2
 St_Names_E_44
 key_East
 LTSCALE
 1=1



SEE DWG C3T7KP02



SEE DWG C3T7KP02

c:\work\ELC\C3T7KP01.dwg
 10/16/08 10:06 : eackerm OE5396

					Designed By:
					Drawn By:
					Checked By:
					Approved By:
No.	Date	Dsn.	Chk.	App.	Revisions

FEIS
 CONCEPTUAL

CH2MHILL
 IN ASSOCIATION WITH
PARSONS & INCA
 ENGINEERS INC.

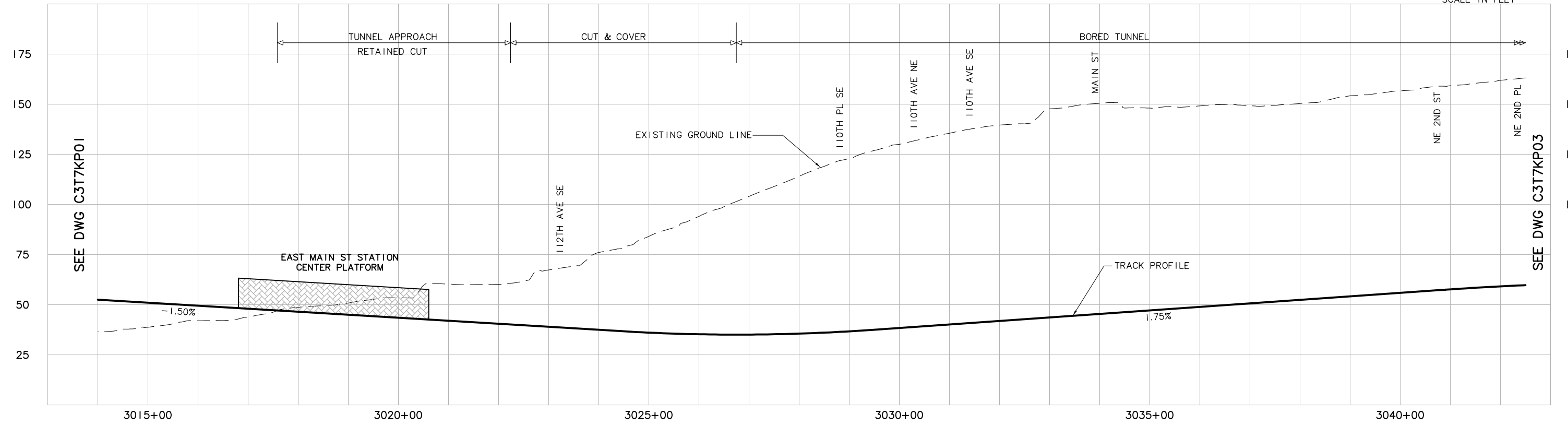
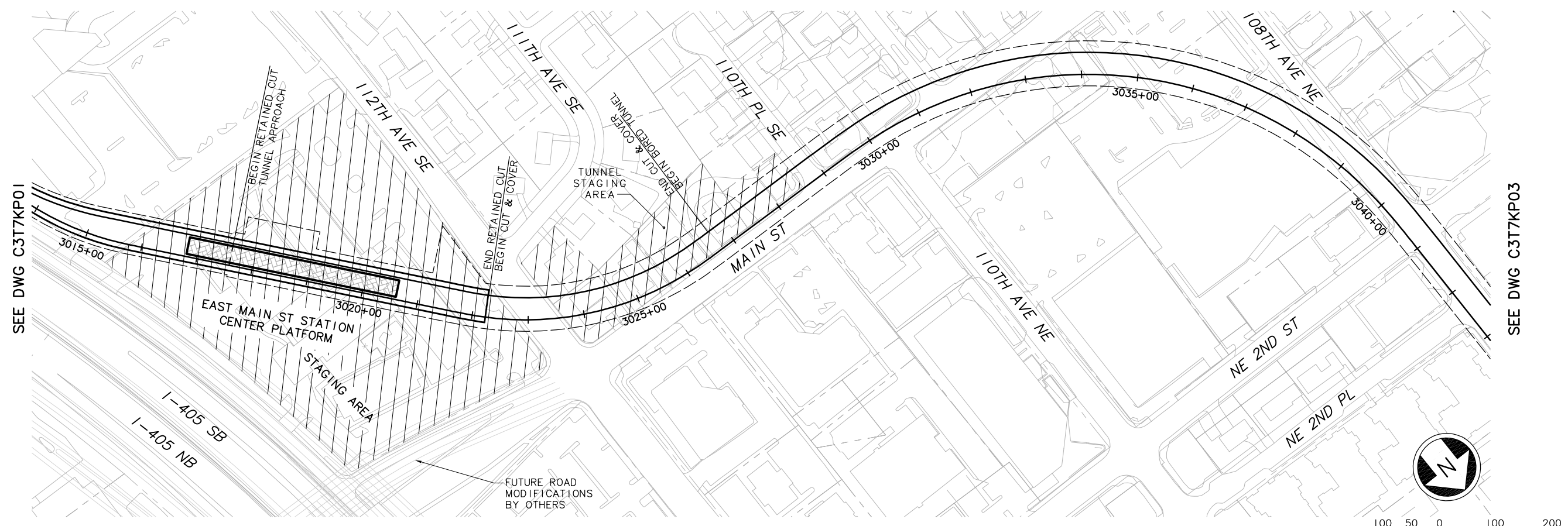
SOUNDTRANSIT

Scale: H: 1"=100'; V: 1"=25'
Filename: ELC\C3T7KP01.dwg
Contract No.: EL_SEG_C
Date:

EAST LINK PROJECT
 SEGMENT C: C3T-B7 OPTION
 ALTERNATIVE C3T
 TRACK PLAN & PROFILE

Drawing No.: C3T7KP01
Sheet No.: C-81
Rev.:

XREF'S
 Resolved
 ELC_C3T_CM
 ELC_C3T_J0
 ELC_C3T_KA
 ELC_1405_P
 REG-DCON
 ZG-2234H
 ZG-G10010
 x0225rx
 x0225sf
 x0228rx
 x0228sf
 x0525rx
 x0525sf
 x0528rx
 x0528sf
 x0531rx
 x0531sf
 x0831rx
 x0831sf
 Unresolved
 2
 St_Names_E_44
 key_East
 LTSCALE
 1=1



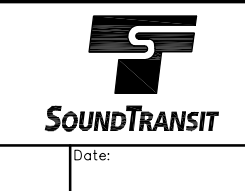
c:\work\ELC\C3T7KP02.dwg
 10/16/08 10:06 : eackerm OE5396

No.	Date	Dsn.	Chk.	App.	Revisions

FEIS
 CONCEPTUAL

CH2MHILL
 IN ASSOCIATION WITH
PARSONS & INCA
 ENGINEERS INC.

Submitted: _____ Date: _____ Approved: _____ Date: _____



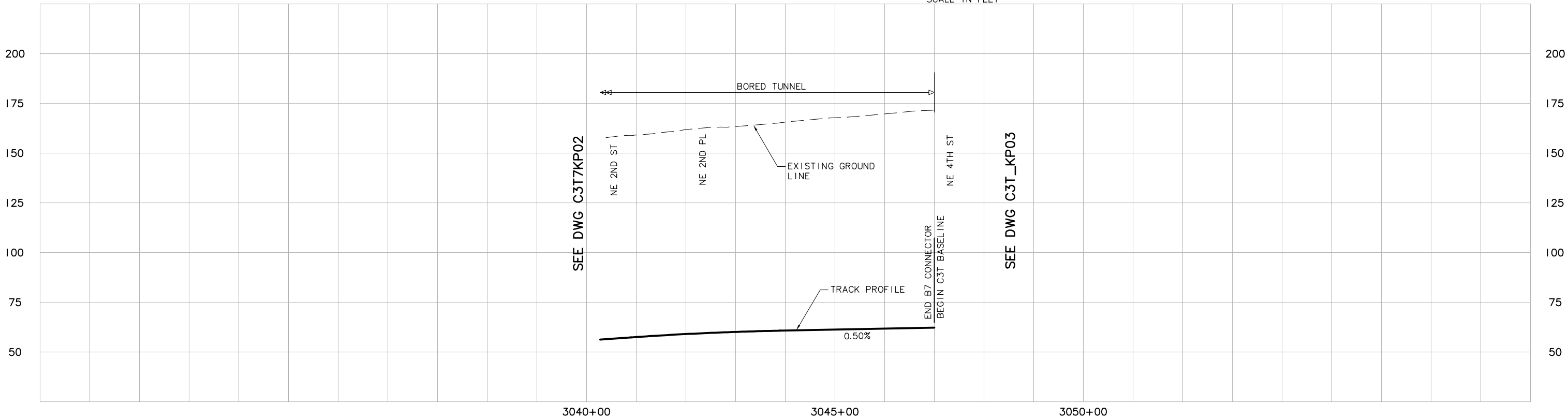
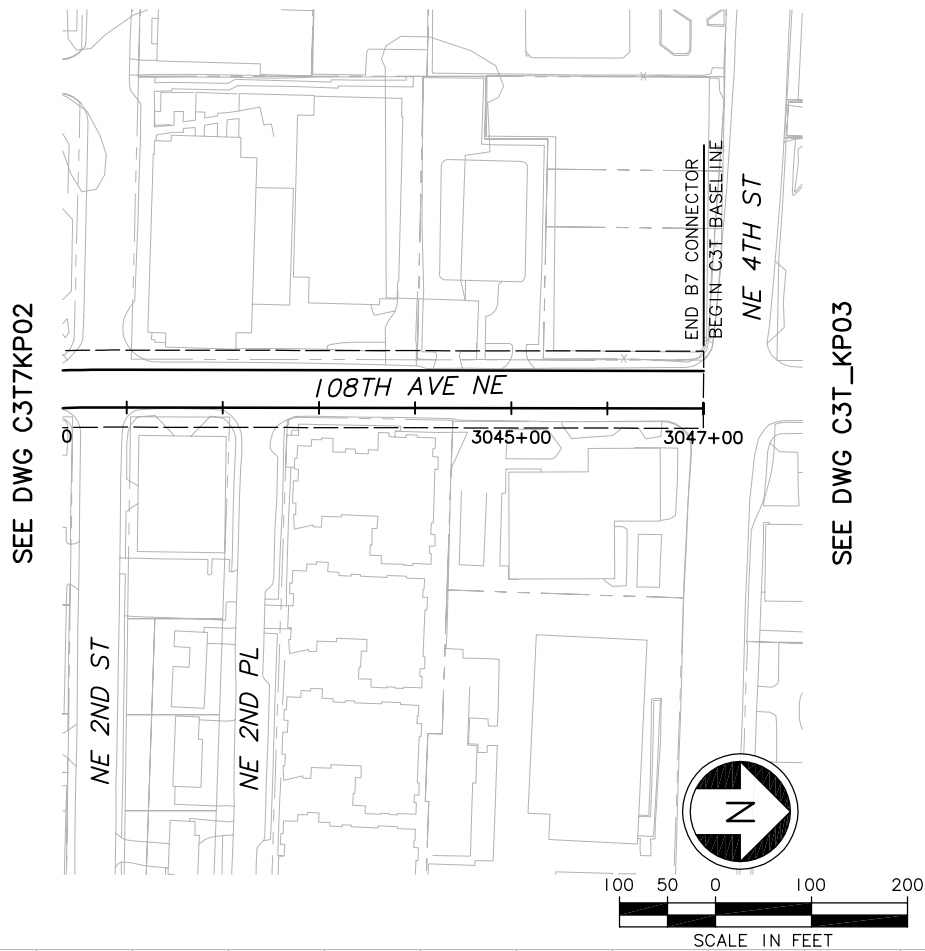
Scale:
 H: 1"=100'; V: 1"=25'
 Filename:
 ELC\C3T7KP02.dwg
 Contract No.:
 EL_SEG_C

EAST LINK PROJECT
 SEGMENT C: C3T-B7 OPTION
 ALTERNATIVE C3T
 TRACK PLAN & PROFILE

THE PRINT RECORD
 HALF SCALE

Drawing No.: C3T7KP02
 Sheet No.: _____ Rev.: _____
 C-82

XREF'S
 Resolved
 ELC_C3T_CM
 ELC_C3T_UO
 ELC_C3T_KA
 REG-DCON
 ZG-2234H
 ZG-G10010
 x0225rx
 x0225sf
 x0228rx
 x0228sf
 x0525rx
 x0525sf
 x0528rx
 x0528sf
 x0531rx
 x0531sf
 x0831rx
 x0831sf
 Unresolved
 St_Names_E_4
 key_East
 LTSCALE
 1=1



c:\work\ELC\C3T7KP03.dwg
 10/16/08 10:07 : eackerm OE5396

					Designed By:
					Drawn By:
					Checked By:
					Approved By:
No.	Date	Dsn.	Chk.	App.	Revisions

FEIS
 CONCEPTUAL

CH2MHILL
 IN ASSOCIATION WITH
PARSONS & INCA
 ENGINEERS INC.



Submitted: _____ Date: _____ Approved: _____ Date: _____

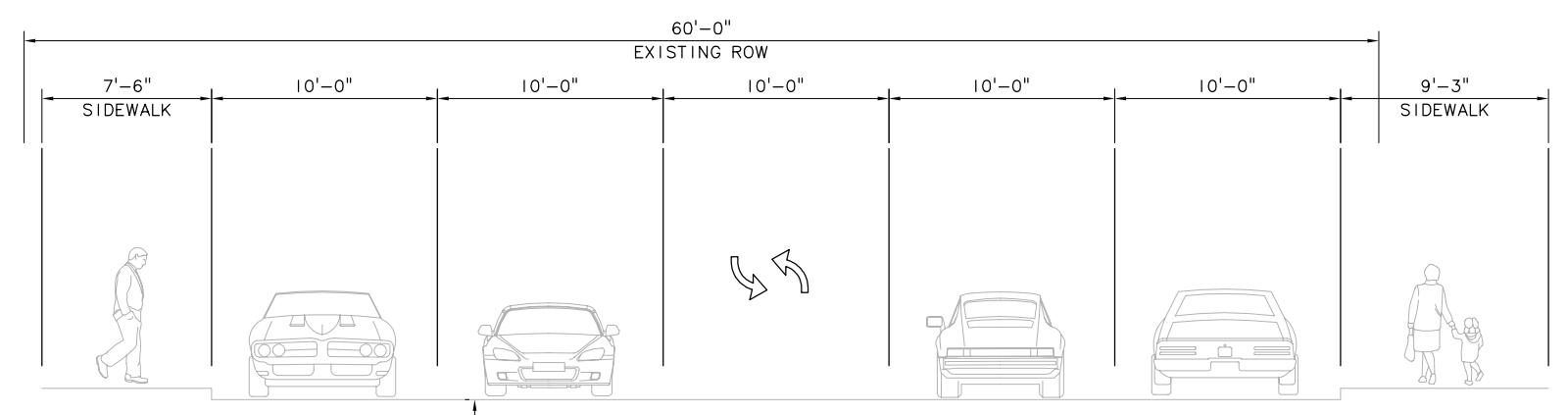
Scale: H: 1" = 100'; V: 1" = 25'
 Filename: ELC\C3T7KP03.dwg
 Contract No.: EL_SEG_C

EAST LINK PROJECT
SEGMENT C: C3T-B7 OPTION
 ALTERNATIVE C3T
 TRACK PLAN & PROFILE

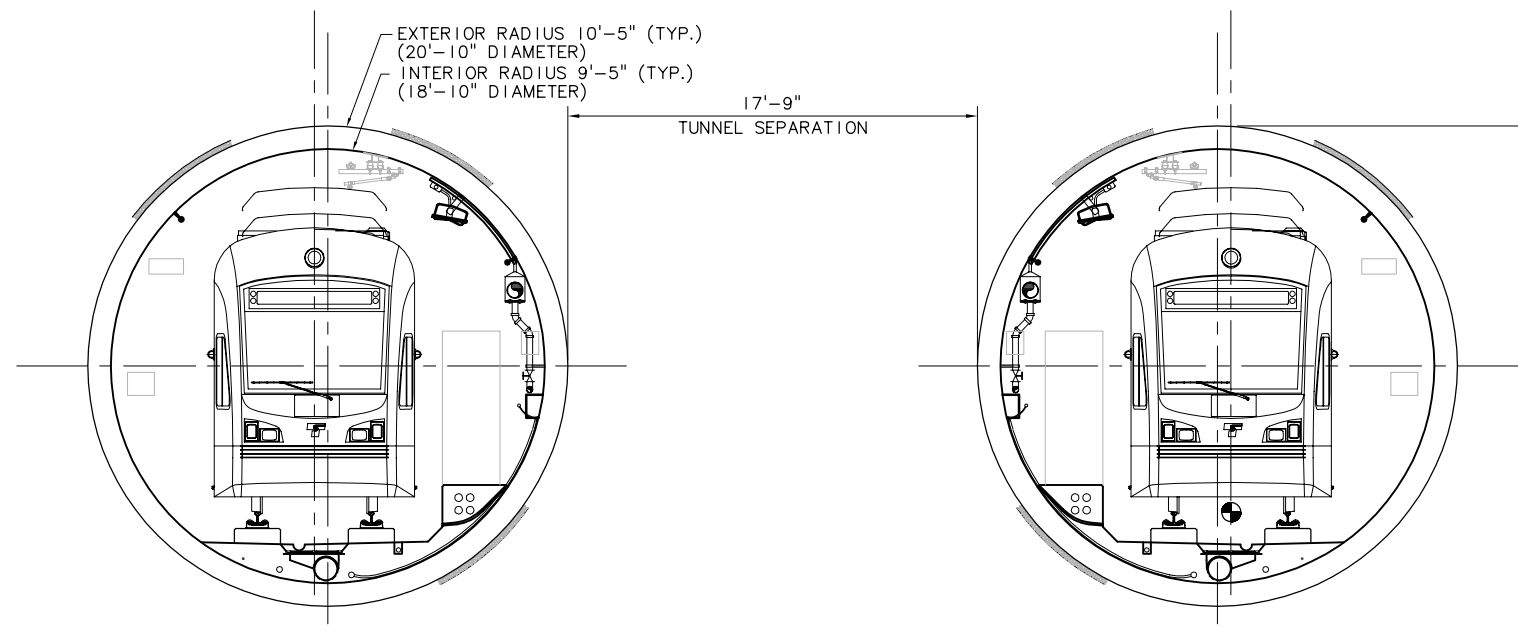


Drawing No.: **C3T7KP03**
 Sheet No.: _____ Rev.: _____
C-83

XREF'S
 Resolved
 REG-DCON
 20-2234H
 Unresolved
 LTSCALE
 1=1



EXISTING ROADWAY SECTION - MAIN STREET
 SCALE: NTS



PROPOSED LRT SECTION - MAIN STREET
 ALIGNMENT: C3T (CONNECTING TO B3 & B7)
 BORED TUNNEL DIRECT FIXATION DOUBLE TRACK
 SCALE: NTS

c:\work\ELC\C3T_KX01.dwg
 10/16/08 10:10: eackerm OE5396

No.	Date	Dsn.	Chk.	App.	Revisions

Designed By:
 Drawn By:
 Checked By:
 Approved By:

**FEIS
 CONCEPTUAL**

CH2MHILL
 IN ASSOCIATION WITH
PARSONS & INCA
 ENGINEERS INC.

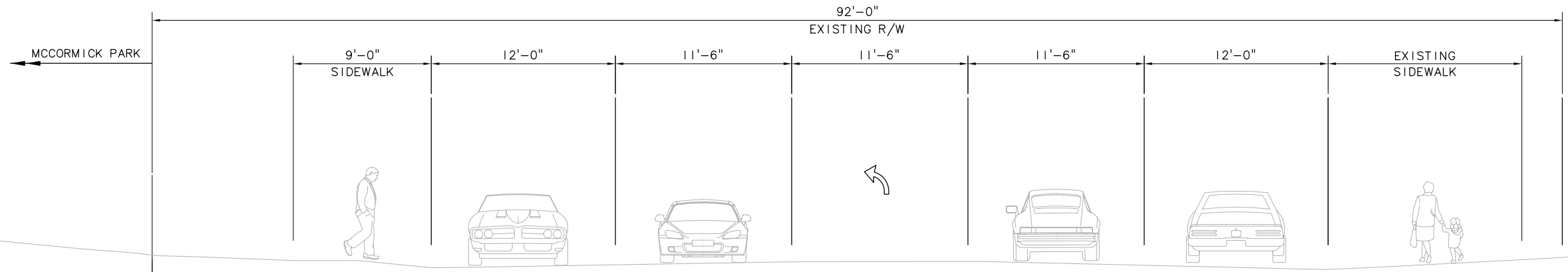
Submitted: Date: Approved: Date:

Scale: NTS
 Filename: ELC\C3T_KX01.dwg
 Contract No.: EL_SEG_C
 Date:

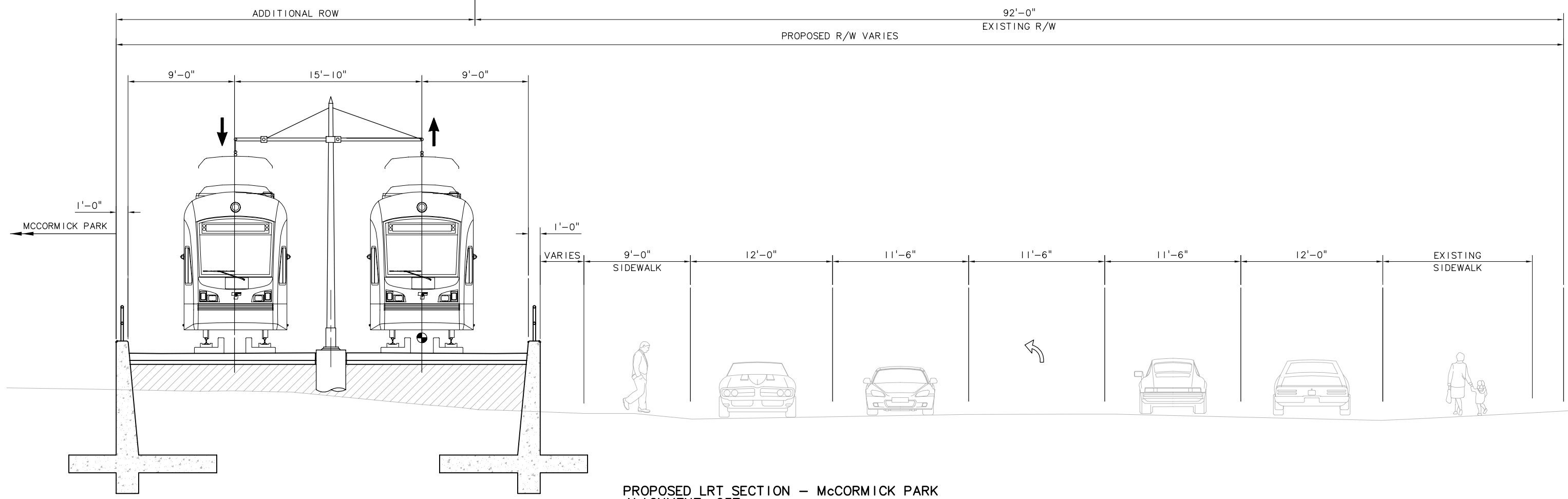
EAST LINK PROJECT
 SEGMENT C
 ALTERNATIVE C3T
 TYPICAL SECTION

Drawing No.: C3T-KX01
 Sheet No.: Rev.:
C-84

XREF'S
 Resolved
 REG-DCON
 20-2234H
 Unresolved
 LTSCALE
 1=1



EXISTING ROADWAY SECTION - MCCORMICK PARK (NE 12TH ST)
 SCALE: NTS



PROPOSED LRT SECTION - MCCORMICK PARK
 ALIGNMENT: C3T
 RETAINED FILL DIRECT FIXATION DOUBLE TRCK GUIDEWAY
 SCALE: NTS

c:\work\ELC\C3T_KX02.dwg
 10/16/08 10:10: eackerm OE5396

No.	Date	Dsn.	Chk.	App.	Revisions

Designed By:
 Drawn By:
 Checked By:
 Approved By:

**FEIS
 CONCEPTUAL**

CH2MHILL
 IN ASSOCIATION WITH
PARSONS & INCA
 ENGINEERS INC.

Submitted: Date: Approved: Date:

SOUNDTRANSIT

Scale: NTS
 Filename: ELC\C3T_KX02.dwg
 Contract No.: EL_SEG_C

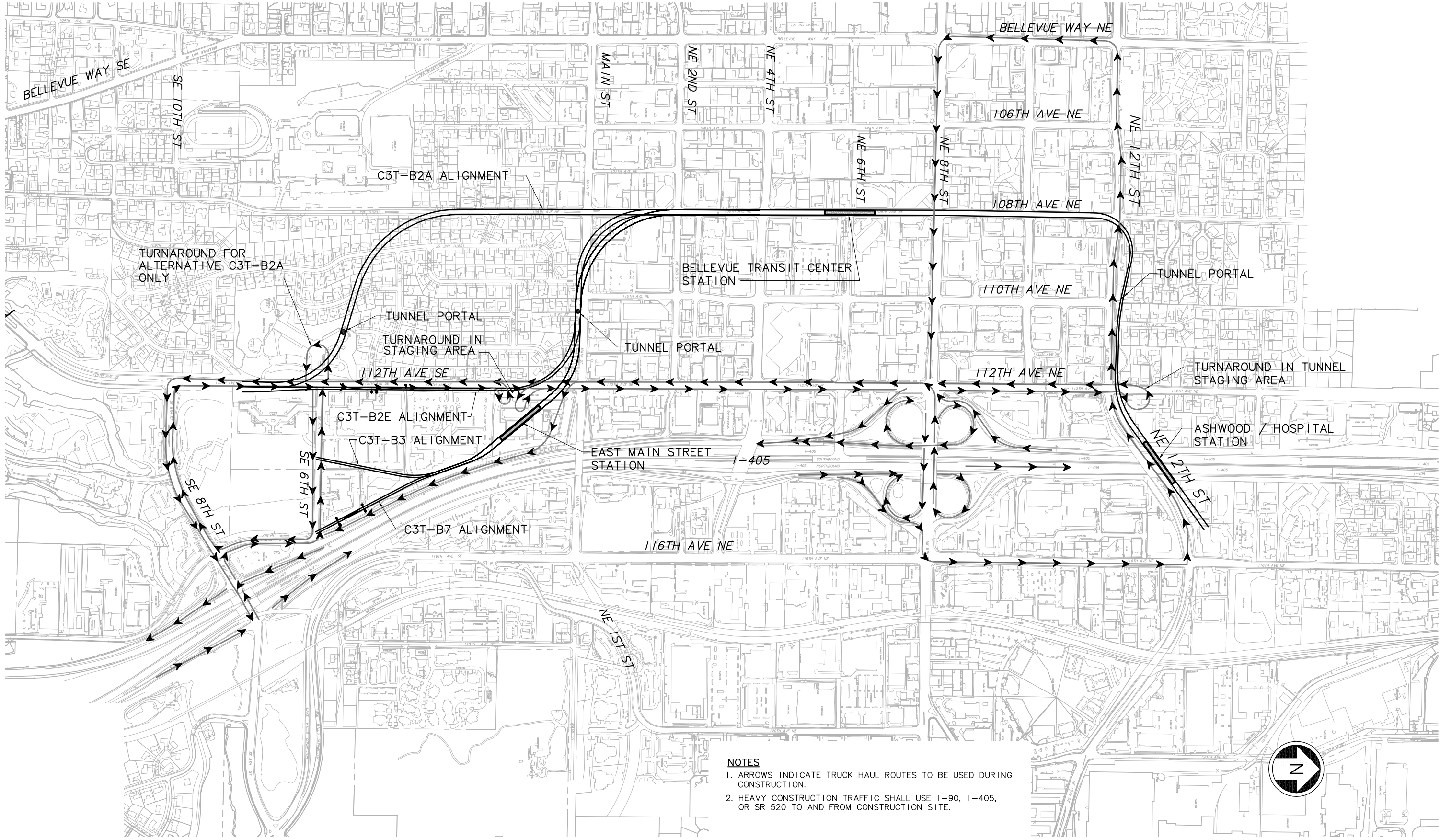
**EAST LINK PROJECT
 SEGMENT C
 ALTERNATIVE C3T
 TYPICAL SECTION**

THIS PRINT RELEASED
 HALF SCALE

Drawing No.: C3T-KX02
 Sheet No.: Rev.:
 C-85

XREF'S
 Resolved
 ELC_C3T_KA
 REG-DCON
 ZG-2234H
 x0222rx
 x0222sf
 x0225rx
 x0225sf
 x0228rx
 x0228sf
 x0231rx
 x0231sf
 x0522rx
 x0522sf
 x0525rx
 x0525sf
 x0528rx
 x0528sf
 x0531rx
 x0531sf
 x0534rx
 x0534sf
 x0822rx
 x0822sf
 x0828rx
 x0828sf
 x0831rx
 x0831sf
 x0834rx
 x0834sf
 Unresolved

LTSCALE
 1=1



- NOTES**
1. ARROWS INDICATE TRUCK HAUL ROUTES TO BE USED DURING CONSTRUCTION.
 2. HEAVY CONSTRUCTION TRAFFIC SHALL USE I-90, I-405, OR SR 520 TO AND FROM CONSTRUCTION SITE.



c:\work\ELC\C3T_CC01.dwg
 10/16/08 10:07 : eackerm OE5396

No.	Date	Dsn.	Chk.	App.	Revisions

Designed By:
 Drawn By:
 Checked By:
 Approved By:

**FEIS
 CONCEPTUAL**

CH2MHILL
 IN ASSOCIATION WITH
PARSONS & INCA
 ENGINEERS INC.

Submitted: Date:
 Approved: Date:

SOUNDTRANSIT

Scale: NTS
 Filename: ELC\C3T_CC01.dwg
 Contract No.: EL_SEG_C
 Date:

**EAST LINK PROJECT
 SEGMENT C
 ALTERNATIVE C3T**

CONSTRUCTION TRUCK HAUL ROUTE PLAN

Drawing No.: C3T-CC01
 Sheet No.: Rev.:
 C-86