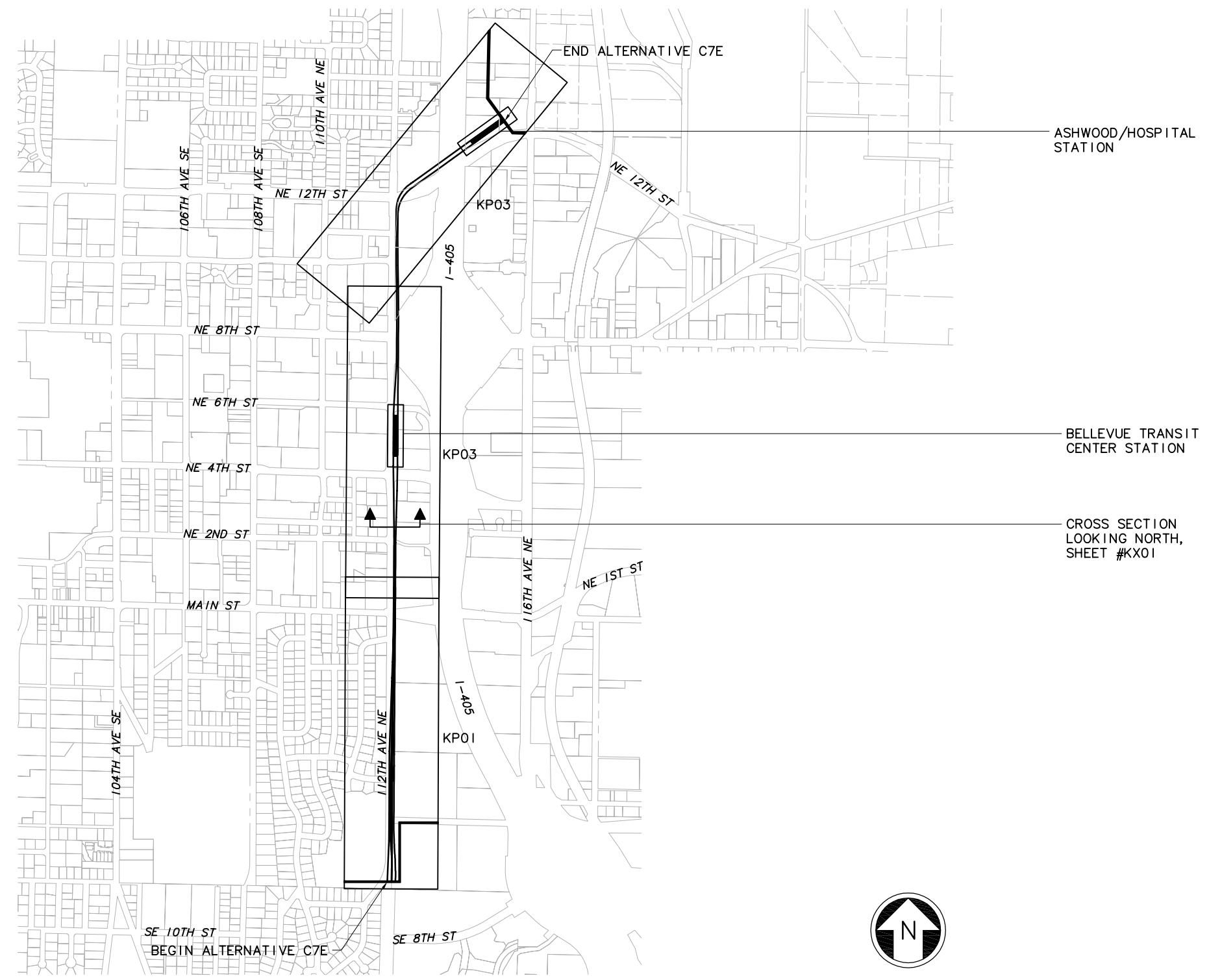


XREF'S  
 Resolved  
 ELC\_C7E\_KA  
 REG-DCON  
 ZG-2234H  
 x0222rx  
 x0225rx  
 x0228rx  
 x0231rx  
 x0522rx  
 x0525rx  
 x0528rx  
 x0531rx  
 x0534rx  
 x0831rx  
 x0834rx  
 Unresolved  
 key\_East  
 LTSCALE  
 1=1



ASHWOOD/HOSPITAL STATION

BELLEVUE TRANSIT CENTER STATION

CROSS SECTION LOOKING NORTH, SHEET #KX01



c:\work\ELC\C7E\_GZ05.dwg  
 10/16/08 10:22 : eackerm OE5396

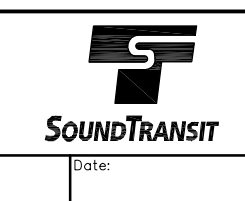
No.	Date	Dsn.	Chk.	App.	Revisions

Designed By:  
 Drawn By:  
 Checked By:  
 Approved By:

**FEIS  
 CONCEPTUAL**

**CH2MHILL**  
 IN ASSOCIATION WITH  
**PARSONS & INCA**  
 ENGINEERS INC.

Submitted: \_\_\_\_\_ Date: \_\_\_\_\_  
 Approved: \_\_\_\_\_ Date: \_\_\_\_\_



Scale: NTS  
 Filename: ELC\C7E\_GZ05.dwg  
 Contract No.: EL\_SEG\_C

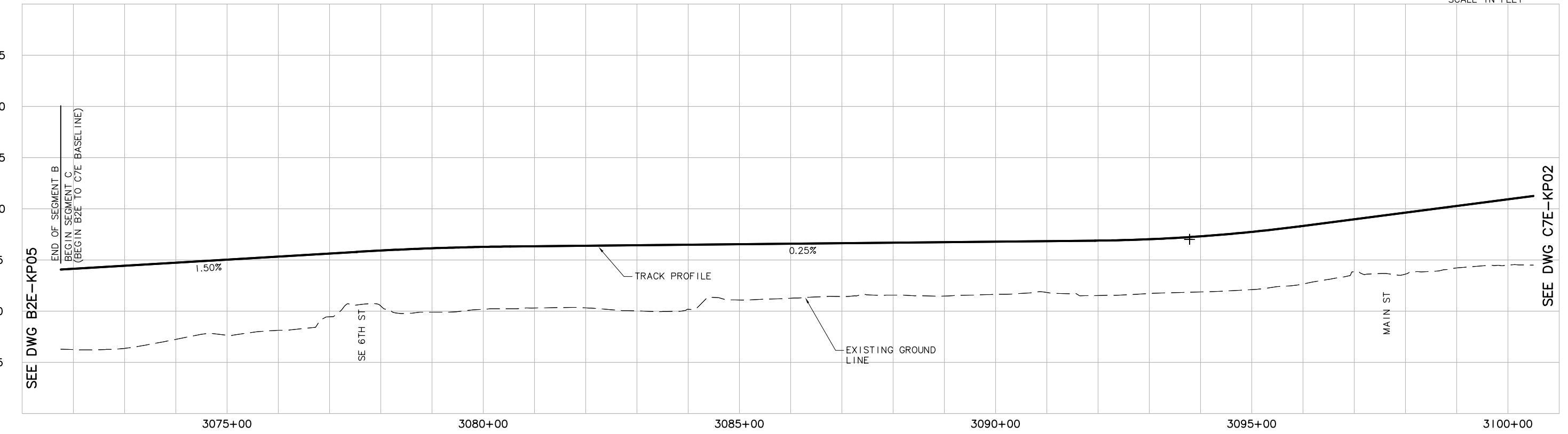
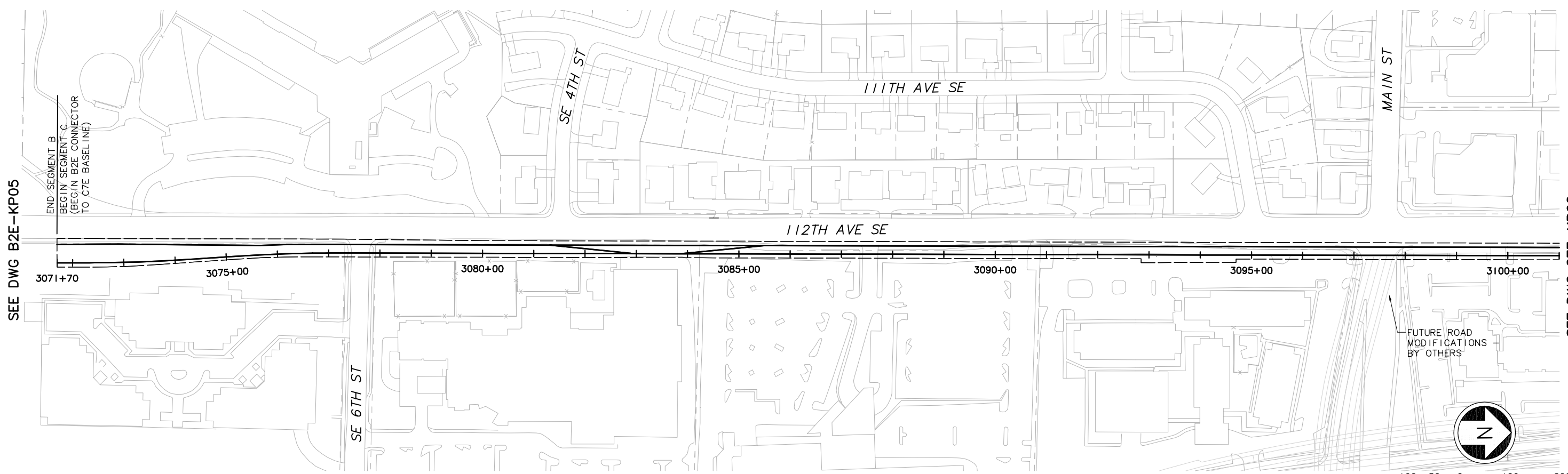
**EAST LINK PROJECT**  
**SEGMENT C: C7E-B2E OPTION**  
**ALTERNATIVE C7E**  
 KEY PLAN



Drawing No.: **C7E-GZ05**  
 Sheet No.: \_\_\_\_\_ Rev.: \_\_\_\_\_  
 Ö-FF€

XREF'S  
 Resolved  
 ELC\_C7E\_CM  
 ELC\_C7E\_Q0  
 ELC\_C7E\_KA  
 ELC\_1405\_P  
 REG-DCON  
 ZG-2234H  
 ZG-G10010  
 x0525rx  
 x0525sf  
 x0528rx  
 x0528sf  
 x0531rx  
 x0531sf  
 x0534rx  
 x0534sf  
 Unresolved  
 St\_Names\_E\_4  
 key\_East

LTSCALE  
 1=1



c:\work\ELC\C7E\_KP01.dwg  
 10/16/08 10:22 : eackerm OE5396

No.	Date	Dsn.	Chk.	App.	Revisions

Designed By:  
 Drawn By:  
 Checked By:  
 Approved By:

FEIS  
 CONCEPTUAL

**CH2MHILL**  
 IN ASSOCIATION WITH  
**PARSONS & INCA**  
 ENGINEERS INC.

Submitted:      Date:      Approved:      Date:

**SOUNDTRANSIT**

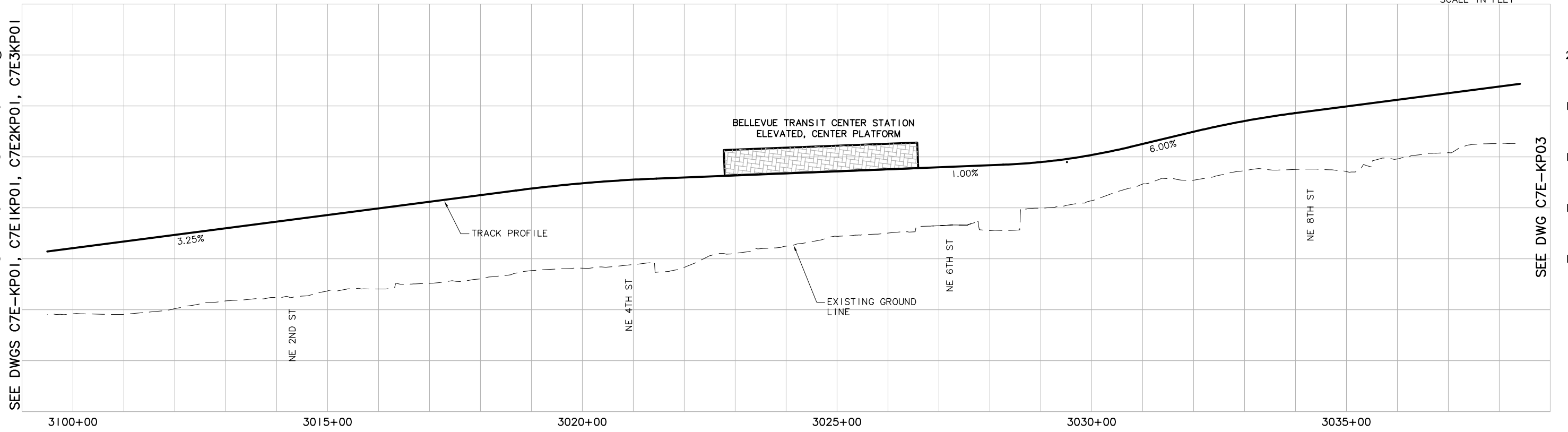
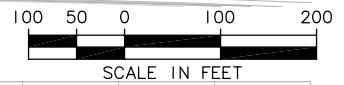
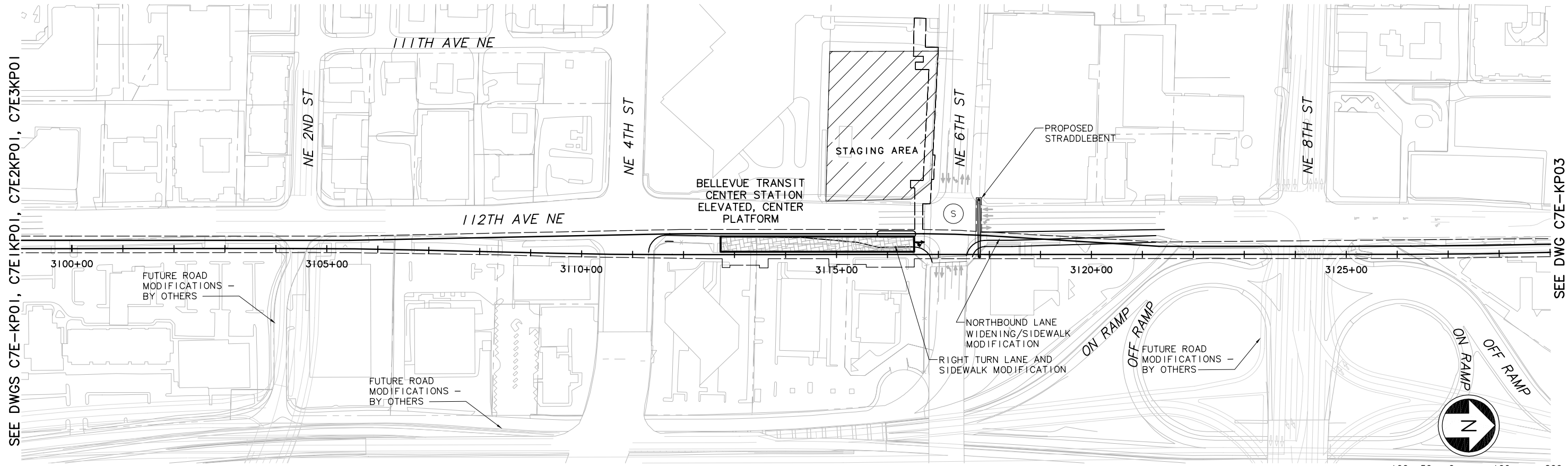
Scale:  
 H: 1"=100'; V: 1"=25'  
 Filename:  
 ELC\C7E\_KP01.dwg  
 Contract No.:  
 EL\_SEG\_C

**EAST LINK PROJECT**  
 SEGMENT C: C7E-B2E OPTION  
 ALTERNATIVE C7E  
 TRACK PLAN & PROFILE

THE PRINTING PROCESS  
 HALF SCALE

Drawing No.: **C7E-KP01**  
 Sheet No.:      Rev.:  
 O-FFF

XREF'S  
 Resolved  
 ELC\_C7E\_CM  
 ELC\_C7E\_KO  
 ELC\_C7E\_KA  
 ELC\_1405\_P  
 REG-DCON  
 ZG-2234H  
 ZG-G10010  
 key\_East  
 x0525rx  
 x0525sf  
 x0528rx  
 x0528sf  
 x0531rx  
 x0531sf  
 x0534rx  
 x0534sf  
 Unresolved  
 St\_Names\_E\_44  
 LTSCALE  
 1=1

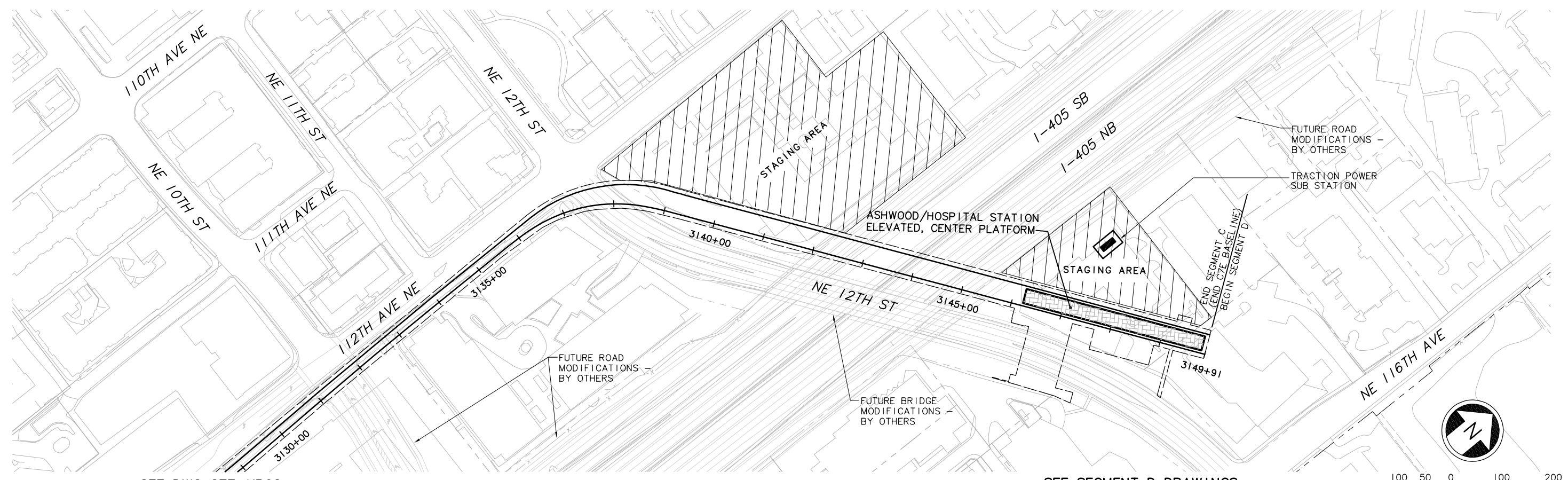


c:\work\ELC\C7E\_KP02.dwg  
 10/16/08 10:23 : eackerm OE5396

No.	Date	Dsn.	Chk.	App.	Revisions

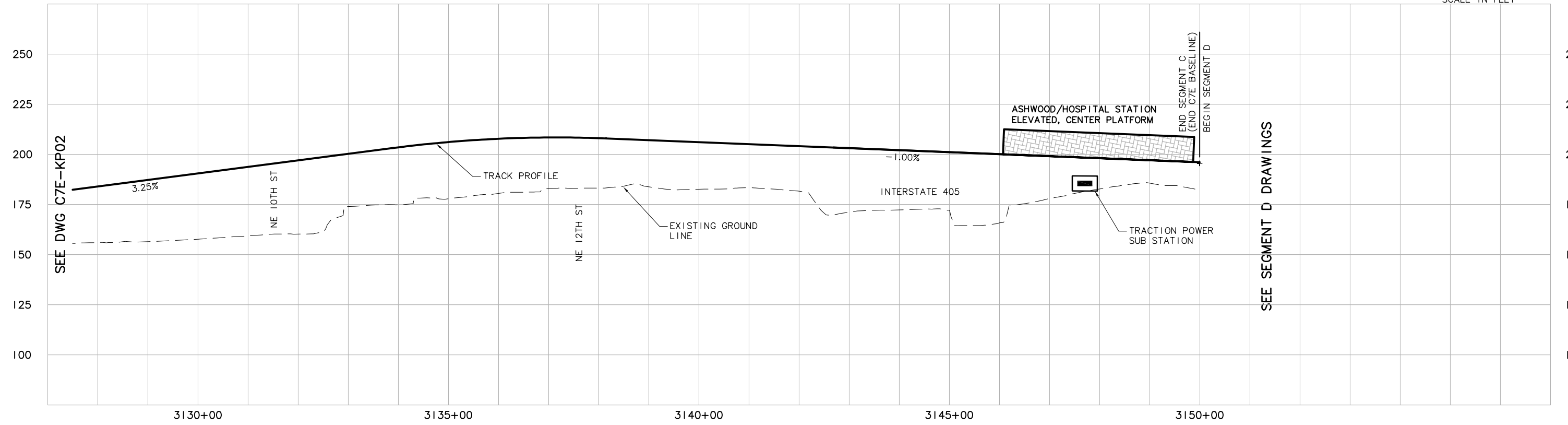
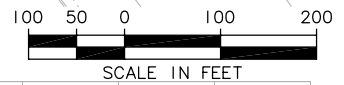
<b>FEIS CONCEPTUAL</b>	Designed By:	<b>CH2MHILL</b> <small>IN ASSOCIATION WITH</small> <b>PARSONS &amp; INCA</b> <small>ENGINEERS INC.</small>	Grijalva Engineering, L.L.C.		Scale:	<b>EAST LINK PROJECT</b> <b>SEGMENT C: C7E-B2E (BASELINE)</b> ALTERNATIVE C7E TRACK PLAN & PROFILE	Drawing No.:
	Drawn By:				Contract No.:		C7E-KP02
	Checked By:				EL SEG_C		Rev.:
Approved By:	Submitted:	Date:	Approved:	Date:	Date:		Ô-FFG

XREF'S  
 Resolved  
 ELC\_C7E\_CM  
 ELC\_C7E\_J0  
 ELC\_C7E\_KA  
 ELC\_1405\_P  
 REG-DCON  
 ZG-2234H  
 ZG-G10010  
 key\_East  
 x0231rx  
 x0231sf  
 x0525rx  
 x0525sf  
 x0528rx  
 x0528sf  
 x0531rx  
 x0531sf  
 x0534rx  
 x0534sf  
 Unresolved  
 2  
 St\_Names\_E.4  
 LTSCALE  
 1=1



SEE DWG C7E-KP02

SEE SEGMENT D DRAWINGS



SEE DWG C7E-KP02

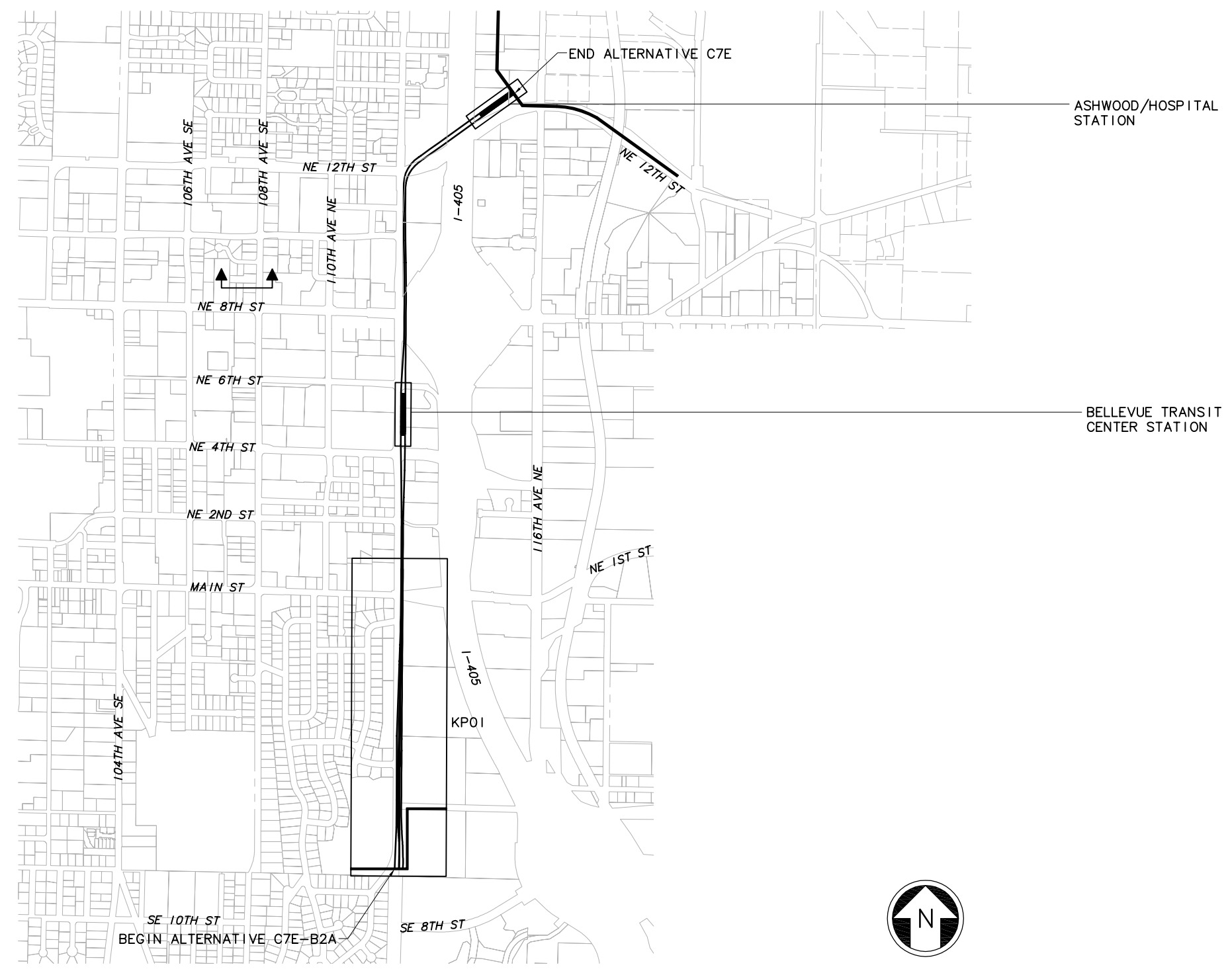
SEE SEGMENT D DRAWINGS

c:\work\ELC\C7E\_KP03.dwg  
 10/16/08 10:23 : eackerm OE5396

No.	Date	Dsn.	Chk.	App.	Revisions

<b>FEIS CONCEPTUAL</b>	Designed By:	<b>CH2MHILL</b> <small>IN ASSOCIATION WITH</small> <b>PARSONS &amp; INCA</b> <small>ENGINEERS INC.</small>	Grijalva Engineering, L.L.C.		Scale:	<b>EAST LINK PROJECT</b> <b>SEGMENT C: C7E-B2E (BASELINE)</b> ALTERNATIVE C7E TRACK PLAN & PROFILE	Drawing No.:
	Drawn By:				H: 1"=100'; V: 1"=25'		C7E-KP03
	Checked By:				Contract No.:		Sheet No.:
Approved By:	Submitted:	Date:	Approved:	Date:	EL_SEG_C	Rev.:	
							Ô-FFH

XREF'S  
 Resolved  
 ELC\_C7E\_KA  
 REG-DCON  
 ZG-2234H  
 x0222rx  
 x0225rx  
 x0228rx  
 x0231rx  
 x0522rx  
 x0525rx  
 x0528rx  
 x0531rx  
 x0534rx  
 x0831rx  
 x0834rx  
 Unresolved  
 key\_East  
 LTSCALE  
 1=1



c:\work\ELC\C7E\IGZ05.dwg  
 10/16/08 10:19 : eackerm OE5396

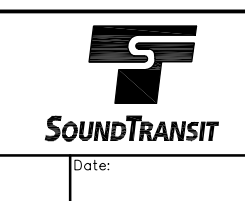
No.	Date	Dsn.	Chk.	App.	Revisions

Designed By:  
 Drawn By:  
 Checked By:  
 Approved By:

**FEIS  
 CONCEPTUAL**

**CH2MHILL**  
 IN ASSOCIATION WITH  
**PARSONS & INCA**  
 ENGINEERS INC.

Submitted:      Date:      Approved:      Date:



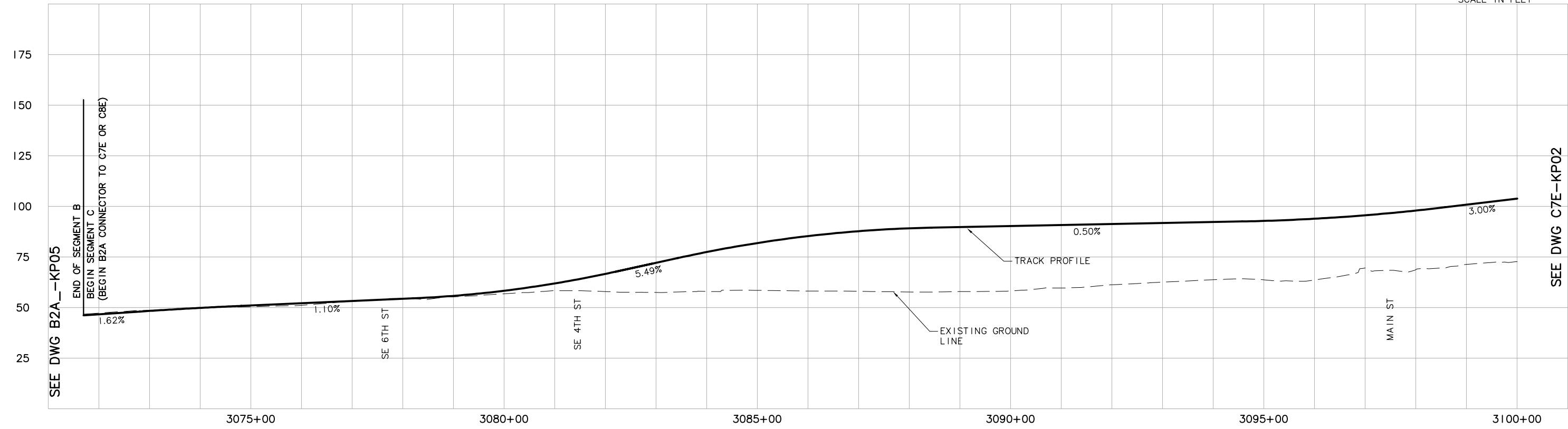
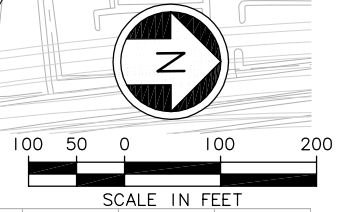
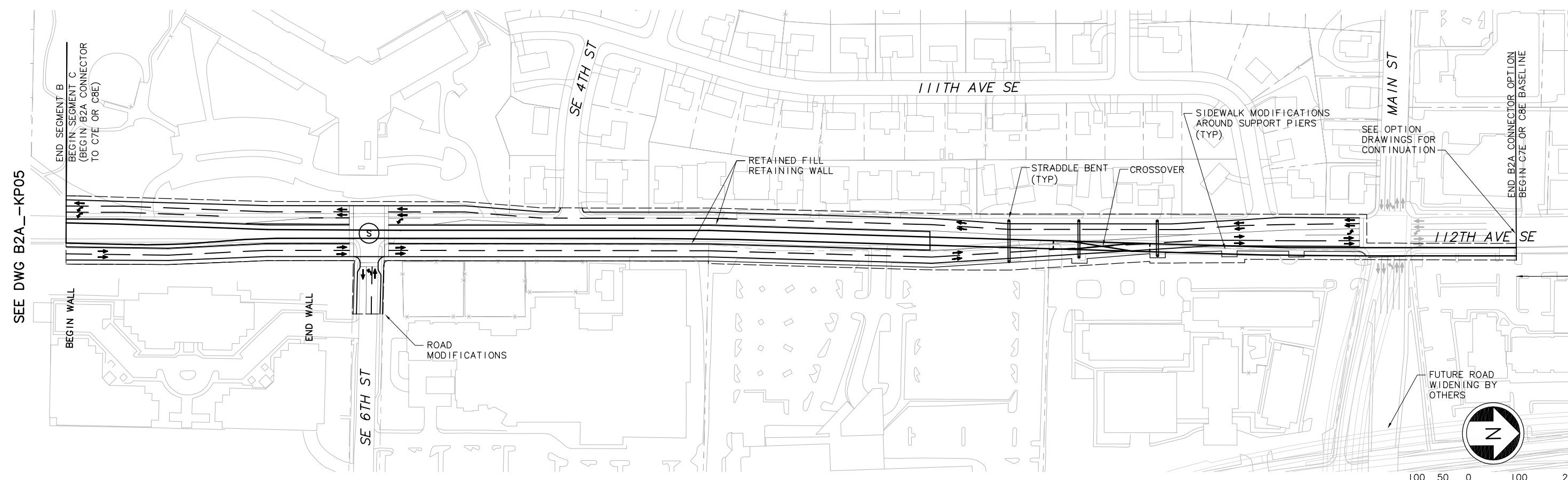
Scale: NTS  
 Filename: ELC\C7E\IGZ05.dwg  
 Contract No.: EL\_SEG\_C  
 Date:

**EAST LINK PROJECT**  
**SEGMENT C: C7E-B2A OPTION**  
**ALTERNATIVE C7E**

KEY PLAN

Drawing No.: C7EIGZ05  
 Sheet No.:      Rev.:  
 Ô-FFI

XREF'S  
 Resolved  
 ELC\_C7E\_CM  
 ELC\_C7E\_J0  
 ELC\_C7E\_KA  
 ELC\_1405\_P  
 REG-DCON  
 ZG-2234H  
 ZG-G10010  
 x0525rx  
 x0525sf  
 x0528rx  
 x0528sf  
 x0531rx  
 x0531sf  
 x0534rx  
 x0534sf  
 Unresolved  
 St\_Names\_E\_4  
 key\_East  
 2  
 LTSCALE  
 1=1



c:\work\ELC\C7E\KP01.dwg  
 10/16/08 10:20 : eackerm OE5396

No.	Date	Dsn.	Chk.	App.	Revisions

Designed By:  
 Drawn By:  
 Checked By:  
 Approved By:

FEIS  
 CONCEPTUAL

**CH2MHILL**  
 IN ASSOCIATION WITH  
**PARSONS & INCA**  
 ENGINEERS INC.

Grijalva  
 Engineering, L.L.C.

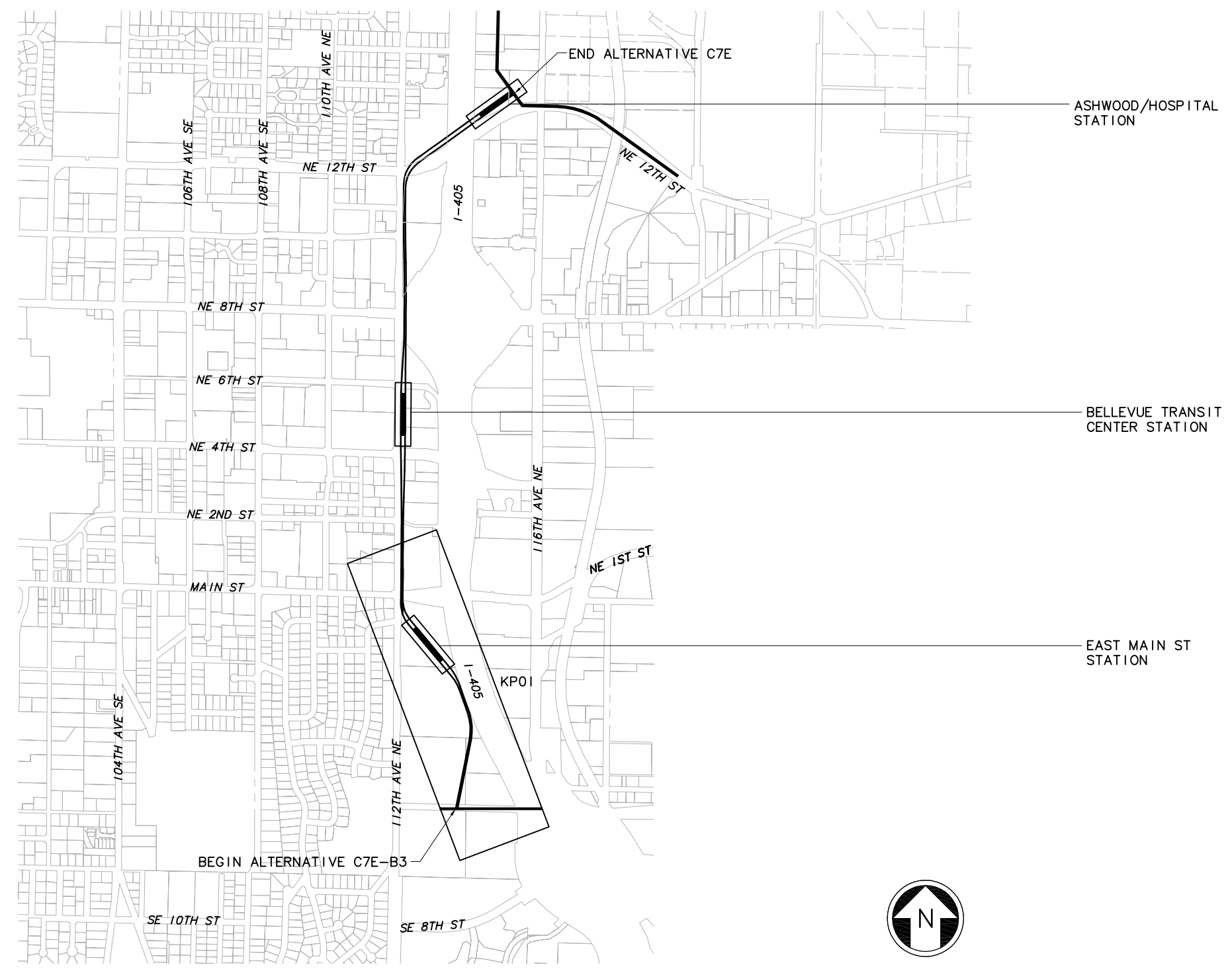
**SOUNDTRANSIT**

Scale:  
 H: 1"=100'; V: 1"=25'  
 Filename:  
 ELC\C7E\KP01.dwg  
 Contract No.:  
 EL\_SEG\_C

**EAST LINK PROJECT**  
 SEGMENT C: C7E-B2A OPTION  
 ALTERNATIVE C7E  
 TRACK PLAN & PROFILE

Drawing No.:  
**C7E1KP01**  
 Sheet No.:  
 Rev.:  
**Ô-FFI**

XREF'S  
 Resolved  
 ELC\_C7E\_KA  
 REG-DCON  
 ZG-2234H  
 x0222rx  
 x0225rx  
 x0228rx  
 x0231rx  
 x0522rx  
 x0525rx  
 x0528rx  
 x0531rx  
 x0534rx  
 x0831rx  
 x0834rx  
 Unresolved  
 key\_East  
 LTSCALE  
 1=1



c:\work\ELC\C7E2GZ05.dwg  
 10/16/08 10:20 : eackerm OE5396

No.	Date	Dsn.	Chk.	App.	Revisions

Designed By:  
 Drawn By:  
 Checked By:  
 Approved By:

**FEIS  
 CONCEPTUAL**

**CH2MHILL**  
 IN ASSOCIATION WITH  
**PARSONS & INCA**  
 ENGINEERS INC.

Submitted:      Date:  
 Approved:      Date:

Scale: NTS  
 Filename: ELC\C7E2GZ05.dwg  
 Contract No.: EL\_SEG\_C  
 Date:

**EAST LINK PROJECT**  
**SEGMENT C: C7E-B3 OPTION**  
**ALTERNATIVE C7E**

KEY PLAN

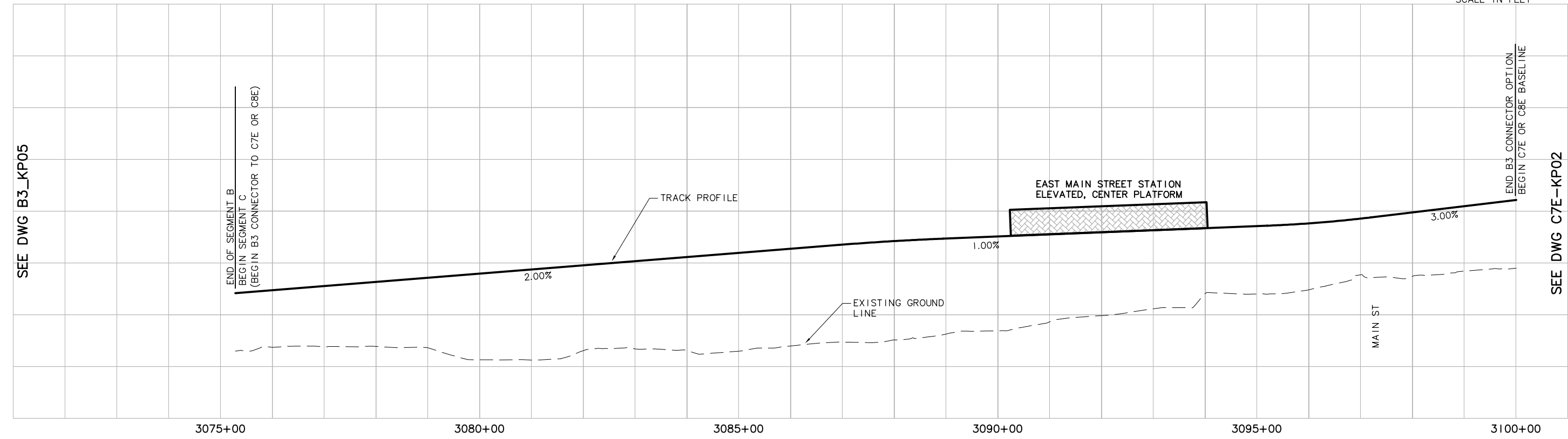
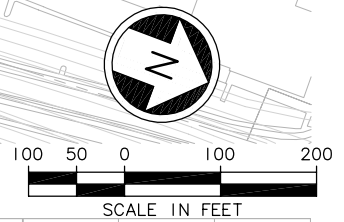
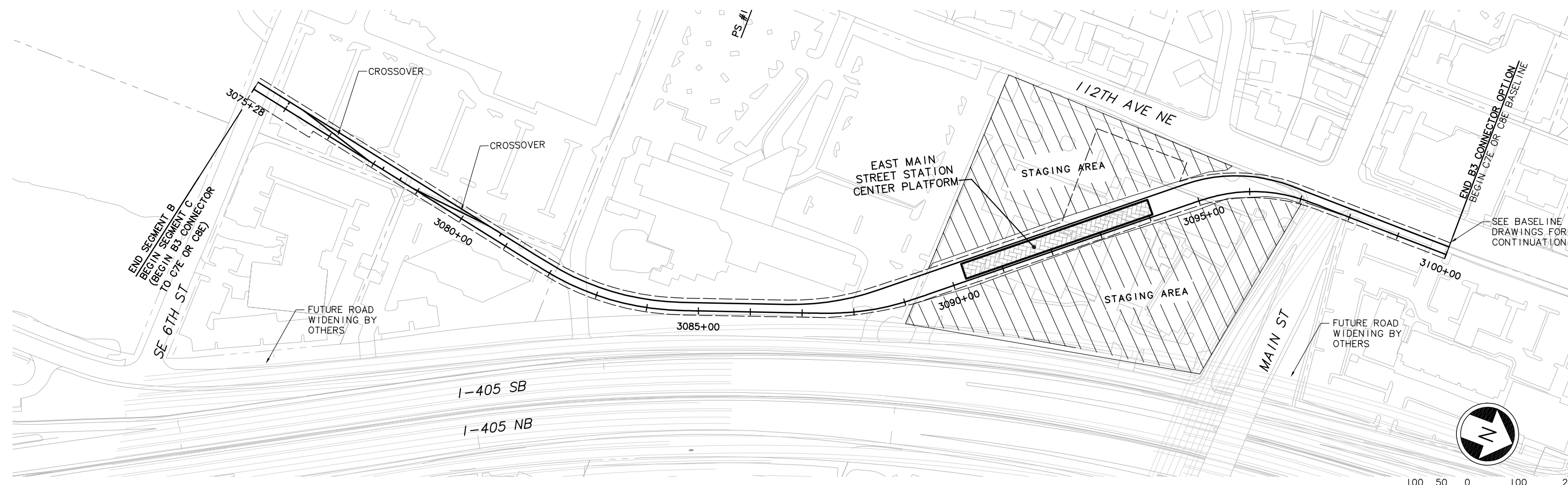
Drawing No.: C7E2GZ05  
 Sheet No.:      Rev.:  
 Ô-FFÎ

XREF'S  
 Resolved  
 ELC\_C7E\_CM  
 ELC\_C7E\_J0  
 ELC\_C7E\_KA  
 ELC\_1405\_P  
 REG-DCON  
 ZG-2234H  
 ZG-G10010  
 x0525rx  
 x0525sf  
 x0528rx  
 x0528sf  
 x0531rx  
 x0531sf  
 x0534rx  
 x0534sf  
 Unresolved  
 St\_Names\_E\_4  
 key\_East

2  
 LTSCALE  
 1=1


SEE DWG B3\_KP05

SEE DWG C7E-KP02



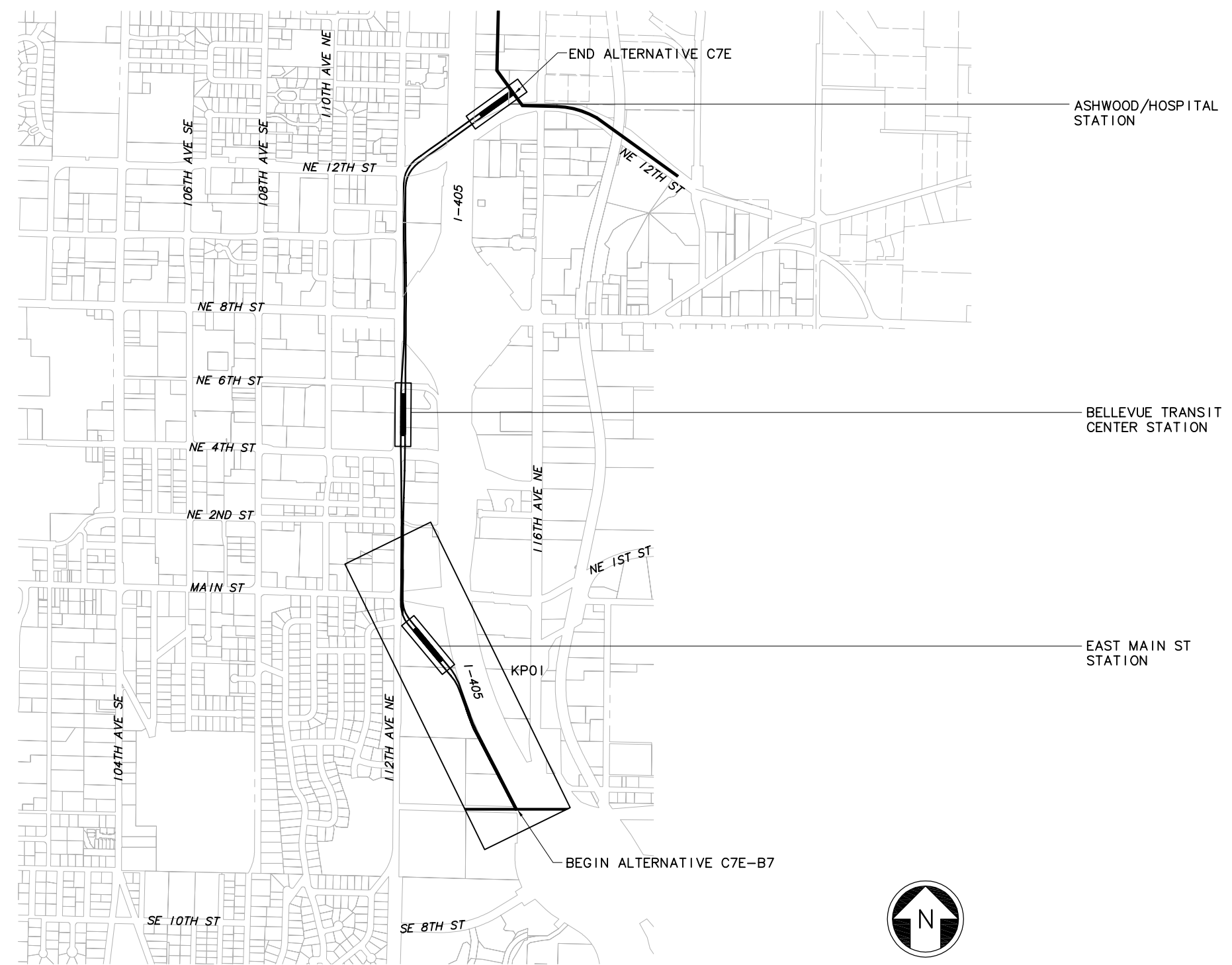
c:\work\ELC\C7E2KP01.dwg  
 10/16/08 10:20 : eackerm OE5396

Designed By:					
Drawn By:					
Checked By:					
Approved By:					
No.	Date	Dsn.	Chk.	App.	Revisions

<b>FEIS CONCEPTUAL</b>	<b>CH2MHILL</b> <small>IN ASSOCIATION WITH</small> <b>PARSONS &amp; INCA</b> <small>ENGINEERS INC.</small>	Grijalva Engineering, L.L.C.	 <b>SOUNDTRANSIT</b>	Scale: H: 1"=100'; V: 1"=25' Filename: ELC\C7E2KP01.dwg Contract No.: EL_SEG_C	<b>EAST LINK PROJECT</b> <b>SEGMENT C: C7E-B3 OPTION</b> ALTERNATIVE C7E <b>TRACK PLAN &amp; PROFILE</b>	Drawing No.: <b>C7E2KP01</b> Sheet No.: <b>Ô-FFI</b>
	Submitted:	Date:	Approved:	Date:	Date:	Rev.:



XREF'S  
 Resolved  
 ELC\_C7E\_KA  
 REG-DCON  
 ZG-2234H  
 x0222rx  
 x0225rx  
 x0228rx  
 x0231rx  
 x0522rx  
 x0525rx  
 x0528rx  
 x0531rx  
 x0534rx  
 x0831rx  
 x0834rx  
 Unresolved  
 key\_East  
 LTSCALE  
 1=1



c:\work\ELC\C7E3GZ05.dwg  
 10/16/08 10:21 : eackerm OE5396

No.	Date	Dsn.	Chk.	App.	Revisions

Designed By:  
 Drawn By:  
 Checked By:  
 Approved By:

FEIS  
 CONCEPTUAL

**CH2MHILL**  
 IN ASSOCIATION WITH  
**PARSONS & INCA**  
 ENGINEERS INC.

Submitted: \_\_\_\_\_ Date: \_\_\_\_\_  
 Approved: \_\_\_\_\_ Date: \_\_\_\_\_

Scale: NTS  
 Filename: ELC\C7E3GZ05.dwg  
 Contract No.: EL\_SEG\_C  
 Date: \_\_\_\_\_

**EAST LINK PROJECT**  
**SEGMENT C: C7E-B7 OPTION**  
**ALTERNATIVE C7E**  
 KEY PLAN

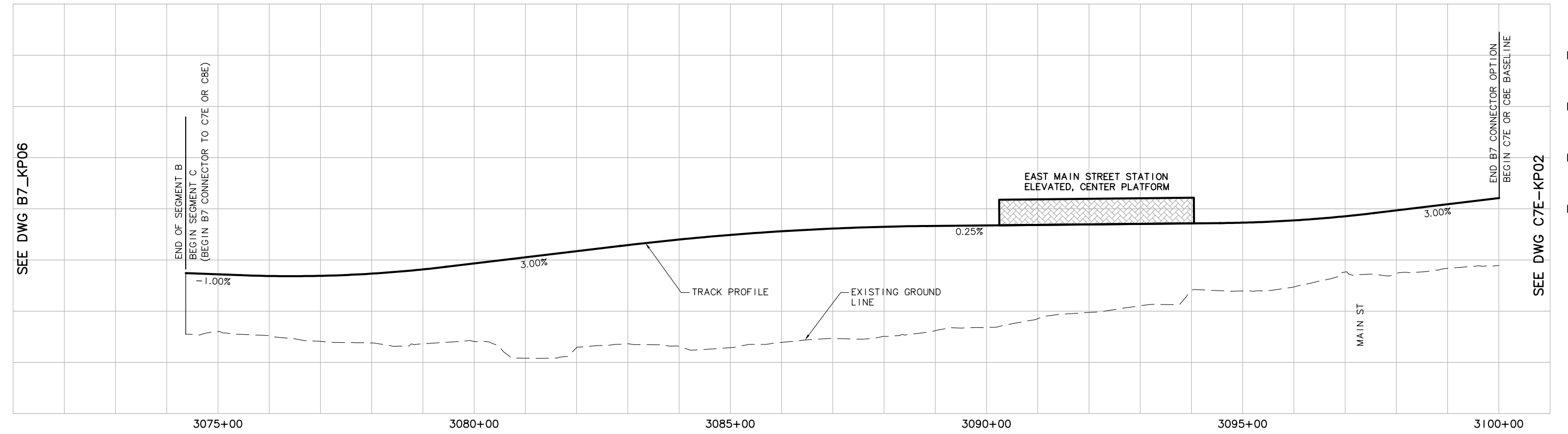
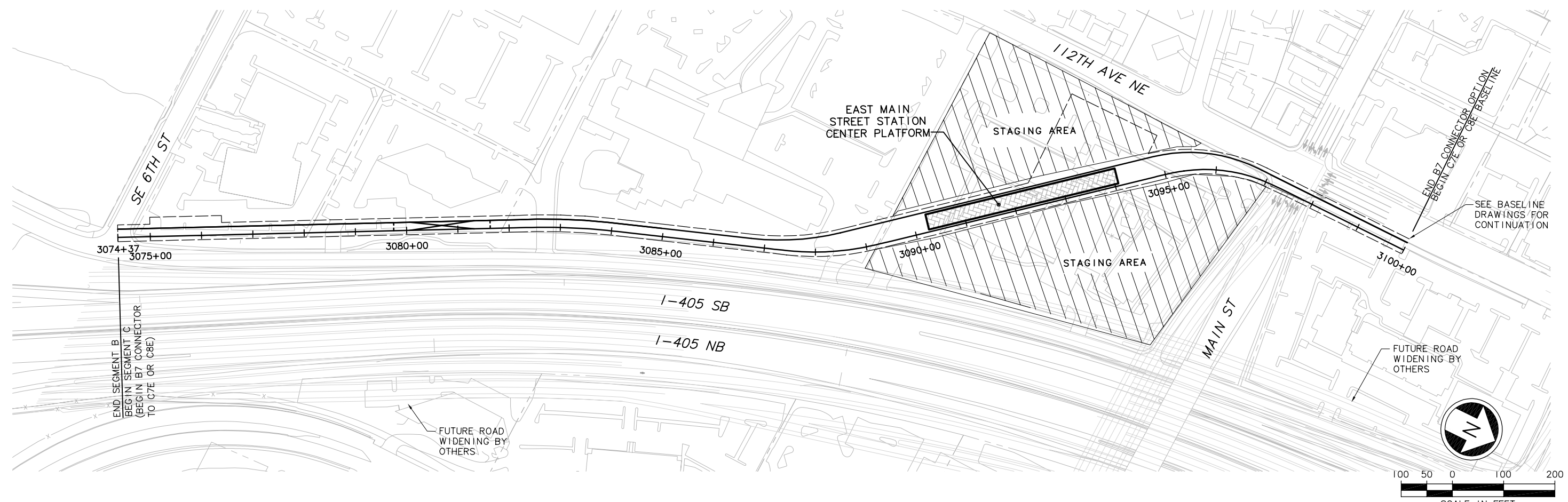


Drawing No.: C7E3GZ05  
 Sheet No.: \_\_\_\_\_ Rev.: \_\_\_\_\_  
 Ô-FFI

XREF'S  
 Resolved  
 ELC\_C7E\_CM  
 ELC\_C7E\_J0  
 ELC\_C7E\_KA  
 ELC\_1405\_P  
 REG-DCON  
 ZG-2234H  
 ZG-G10010  
 x0525rx  
 x0525sf  
 x0528rx  
 x0528sf  
 x0531rx  
 x0531sf  
 x0534rx  
 x0534sf  
 Unresolved  
 St\_Names\_E\_44  
 key\_East

SEE DWG B7\_KP06

SEE DWG C7E-KP02

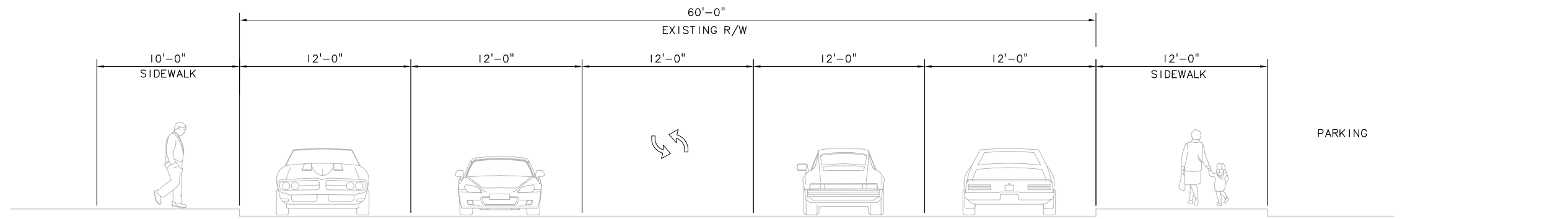


c:\work\ELC\C7E3KP01.dwg  
 10/16/08 10:21 : eackerm OE5396

	Designed By:				
	Drawn By:				
	Checked By:				
	Approved By:				
No.	Date	Dsn.	Chk.	App.	Revisions

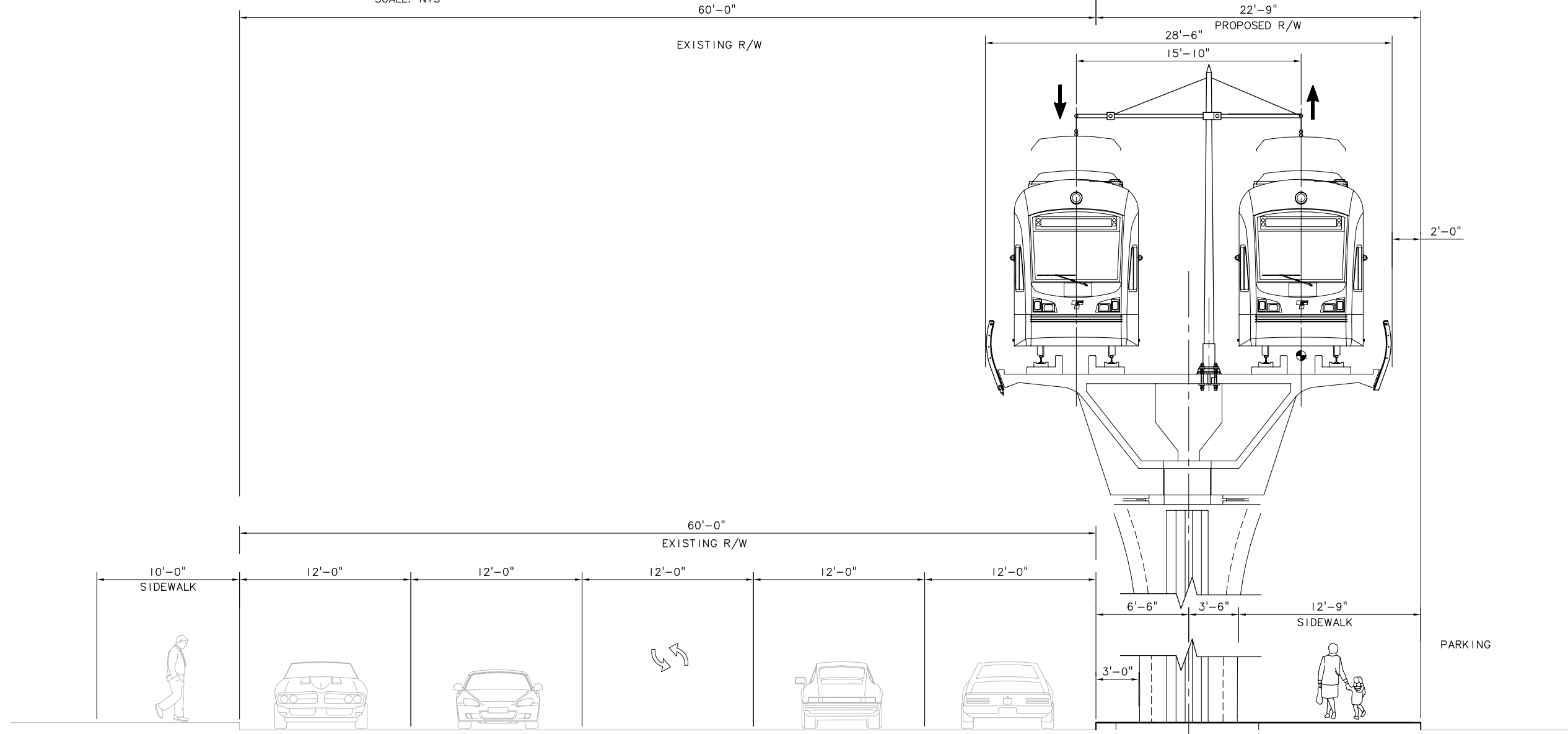
<b>FEIS CONCEPTUAL</b>	<b>CH2MHILL</b> IN ASSOCIATION WITH <b>PARSONS &amp; INCA</b> ENGINEERS INC.		Grijalva Engineering, L.L.C.		 <b>SOUNDTRANSIT</b>	Scale: H: 1"=100'; V: 1"=25'		<b>EAST LINK PROJECT</b> SEGMENT C: C7E-B7 OPTION ALTERNATIVE C7E TRACK PLAN & PROFILE		Drawing No.: <b>C7E3KP01</b>	
	Submitted:		Date:			Approved:				Date:	

XREF'S  
 Resolved  
 REG-DCON  
 20-2234H  
 Unresolved  
 LTSCALE  
 1=1



**EXISTING ROADWAY SECTION – 112TH AVE NE, NORTH OF MAIN ST**

SCALE: NTS



**PROPOSED ROADWAY & LRT SECTION – 112TH AVE NE, NORTH OF MAIN STREET**

ALIGNMENT: C7E TO B2E CONNECTOR OPTION  
 TRACK TYPE: ELEVATED DIRECT FIXATION DOUBLE TRACK GUIDEWAY

SCALE: NTS

c:\work\ELC\C7E\_KX01.dwg  
 10/16/08 10:24 : eackerm OE5396

No.	Date	Dsn.	Chk.	App.	Revisions

Designed By:  
 Drawn By:  
 Checked By:  
 Approved By:

**FEIS  
 CONCEPTUAL**

**CH2MHILL**  
 IN ASSOCIATION WITH  
**PARSONS & INCA**  
 ENGINEERS INC.

Submitted:      Date:  
 Approved:      Date:

**SOUNDTRANSIT**

Scale: NTS  
 Filename: ELC\C7E\_KX01.dwg  
 Contract No.: EL\_SEG\_C

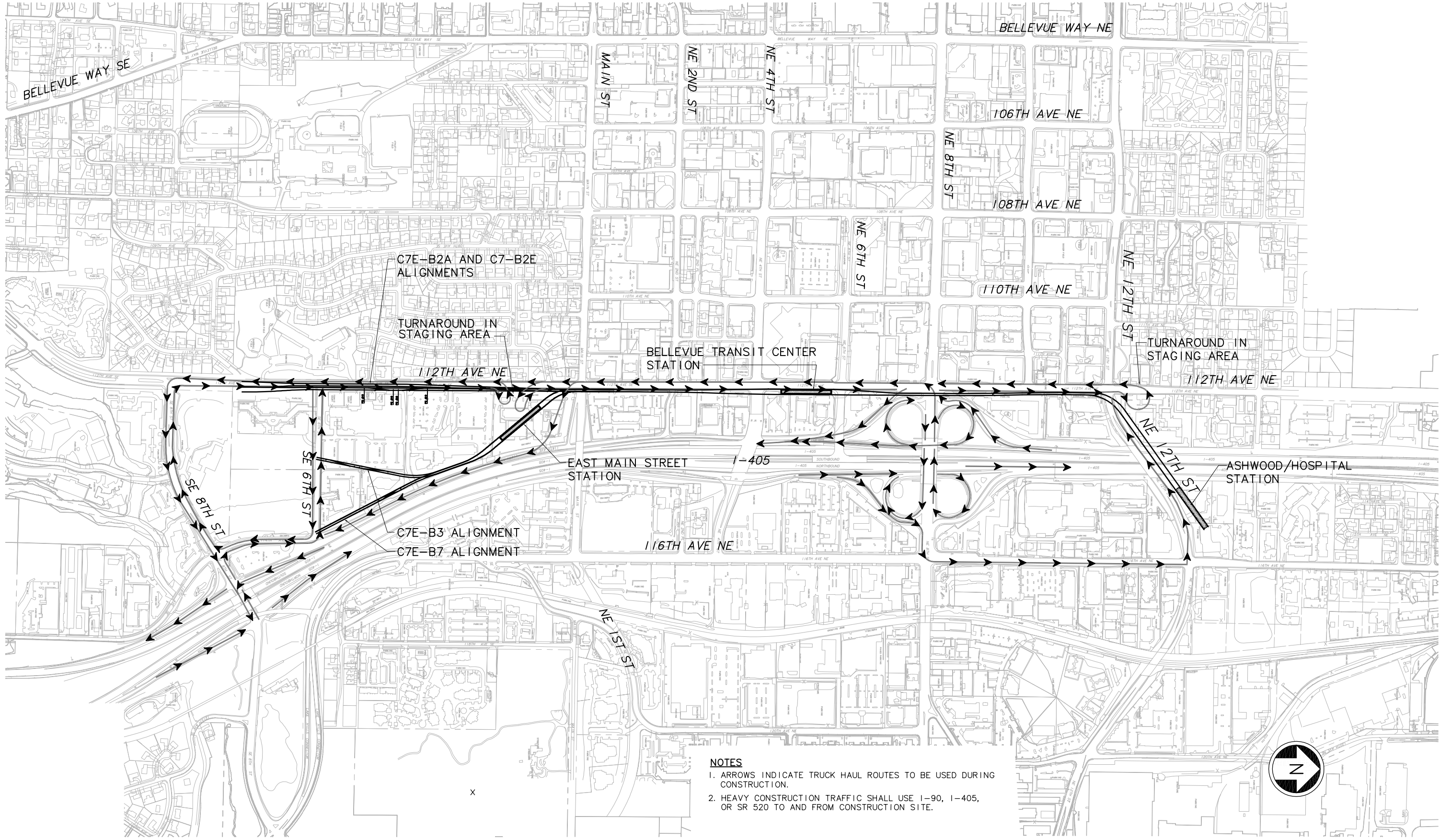
**EAST LINK PROJECT  
 SEGMENT C  
 ALTERNATIVE C7E  
 TYPICAL SECTION**



Drawing No.: C7E-KX01  
 Sheet No.:      Rev.:  
 Ô-FGE

XREF'S  
 Resolved  
 ELC\_C7E\_KA  
 REG-DCON  
 ZG-2234H  
 x0222rx  
 x0225f  
 x0225f  
 x0228rx  
 x0228f  
 x0231rx  
 x0231f  
 x0522rx  
 x0522f  
 x0525rx  
 x0525f  
 x0528rx  
 x0528f  
 x0531rx  
 x0531f  
 x0534rx  
 x0534f  
 x0825rx  
 x0825f  
 x0828rx  
 x0828f  
 x0831rx  
 x0831f  
 x0834rx  
 x0834f  
 Unresolved

LTSCALE  
 1=1



- NOTES**
- ARROWS INDICATE TRUCK HAUL ROUTES TO BE USED DURING CONSTRUCTION.
  - HEAVY CONSTRUCTION TRAFFIC SHALL USE I-90, I-405, OR SR 520 TO AND FROM CONSTRUCTION SITE.



c:\work\ELC\C7E\_CC01.dwg  
 10/16/08 10:21 : eackerm OE5396

No.	Date	Dsn.	Chk.	App.	Revisions

Designed By:  
 Drawn By:  
 Checked By:  
 Approved By:

**FEIS  
 CONCEPTUAL**

**CH2MHILL**  
 IN ASSOCIATION WITH  
**PARSONS & INCA**  
 ENGINEERS INC.

Submitted:      Date:  
 Approved:      Date:

**SOUNDTRANSIT**

Scale:      NTS  
 Filename:      ELC\C7E\_CC01.dwg  
 Contract No.:      EL\_SEG\_C  
 Date:

**EAST LINK PROJECT  
 SEGMENT C  
 ALTERNATIVE C7E**

CONSTRUCTION TRUCK HAUL ROUTE PLAN

Drawing No.:      C7E-CC01  
 Sheet No.:      Rev.:  
 O-FGF