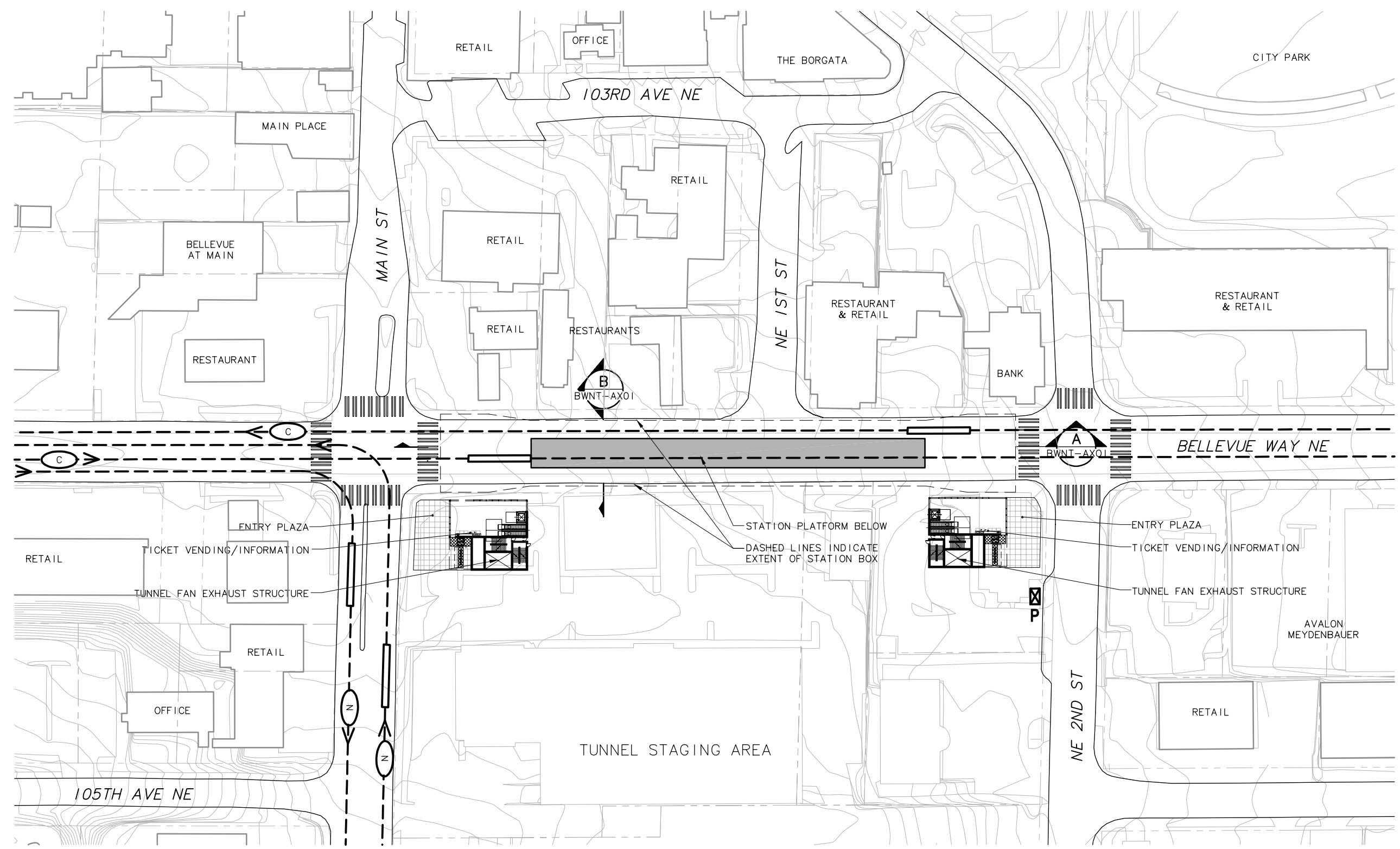


XREF'S  
 Resolved  
 ELC\_BUSRTS\_1  
 ELC\_BWNTAG\_A  
 ELC\_BWNTAG\_1  
 ELC\_CIT\_CM  
 ELC\_CIT\_KA  
 REG-DCON  
 X0228CN  
 X0228SF  
 ZG-2234H  
 X0228rx  
 Unresolved

LTSCALE  
 1=1

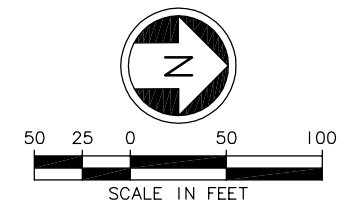
NOTES/LEGEND HEADING  
 I. ALIGNMENT CIT



**SYMBOLS KEY**

- NEW BUS STOP
- EXISTING BUS STOP
- BUS LAYOVER
- NEW BUS SHELTER
- PARATRANSIT STOP
- BUS ROUTE: 532, 535
- BUS ROUTE: 222
- BIKE STORAGE
- BIKE SHELTER
- TICKET VENDING/INFORMATION
- CROSSWALK
- TRACK

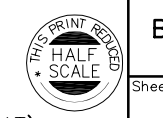
**STATION ACCESS PLAN**  
 SCALE: 1"=50'



c:\work\ELC\BWNT\_AS01.dwg  
 10/16/08 09:50 : eackerm OE5396

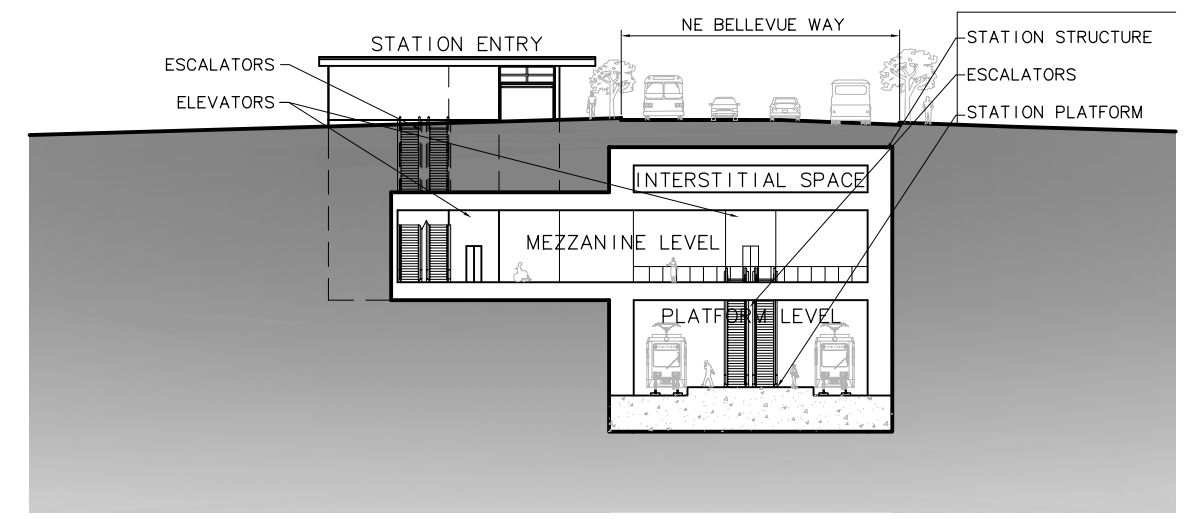
No.	Date	Dsn.	Chk.	App.	Revisions

<b>FEIS CONCEPTUAL</b>	Designed By:	 <b>CH2MHILL</b> <small>IN ASSOCIATION WITH</small> <b>PARSONS &amp; INCA</b> <small>ENGINEERS INC.</small>	 <b>HEWITT</b>	 <b>SOUNDTRANSIT</b>	Scale:	1"=50'	<b>EAST LINK PROJECT SEGMENT C</b>  OLD BELLEVUE STATION BELLEVUE WAY ALTERNATIVE (CIT) STATION ACCESS PLAN	Drawing No.:	BWNT-AS01
	Drawn By:				Filename:	ELC\BWNT_AS01.dwg		Sheet No.:	
	Checked By:				Contract No.:	EL_SEG_C		Rev.:	
	Approved By:				Submitted:	Date:		Approved:	Date:

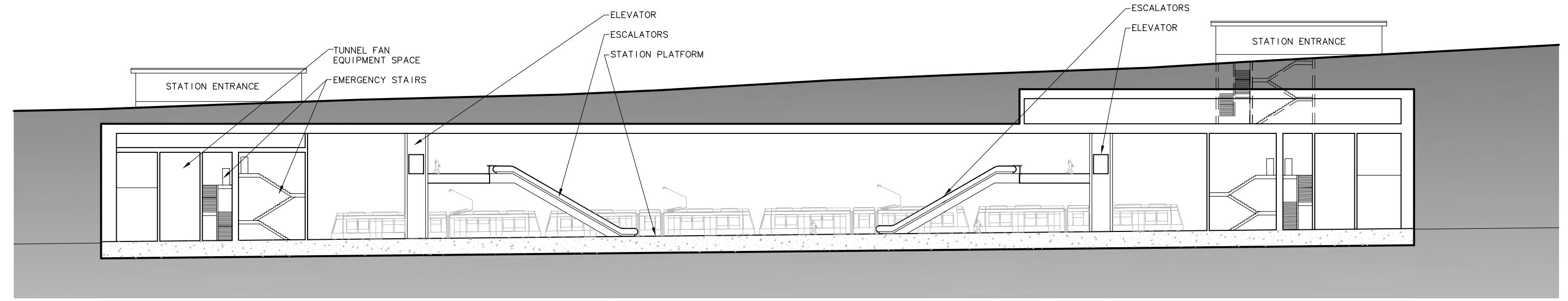


C-132

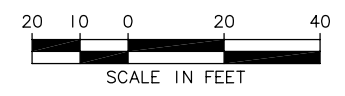
XREF'S  
 Resolved  
 ELC\_BWNTAX\_A  
 REG-DCON  
 ZG-2234H  
 Unresolved  
 LTSCALE  
 1=1



**CROSS SECTION B**  
 SCALE: 1"=20' BWNT-AS01



**SECTION A**  
 SCALE: 1"=20' BWNT-AS01



c:\work\ELC\BWNT\_AX01.dwg  
 10/16/08 09:50 : eackerm OE5396

					Designed By:	<b>FEIS CONCEPTUAL</b>	<b>CH2MHILL</b> IN ASSOCIATION WITH <b>PARSONS &amp; INCA</b> ENGINEERS INC.	<b>HEWITT</b>		Scale:	1"=20'	<b>EAST LINK PROJECT SEGMENT C</b>  OLD BELLEVUE STATION BELLEVUE WAY ALTERNATIVE (CIT) CROSS SECTION & SECTION	Drawing No.:	BWNT-AX01				
					Drawn By:					Submitted:	Date:		Approved:	Date:	Filename:	ELC\BWNT_AX01.dwg	Sheet No.:	Rev.:
					Checked By:										Contract No.:	EL_SEG_C		
					Approved By:												<b>C-133</b>	
No.	Date	Dsn.	Chk.	App.	Revisions													