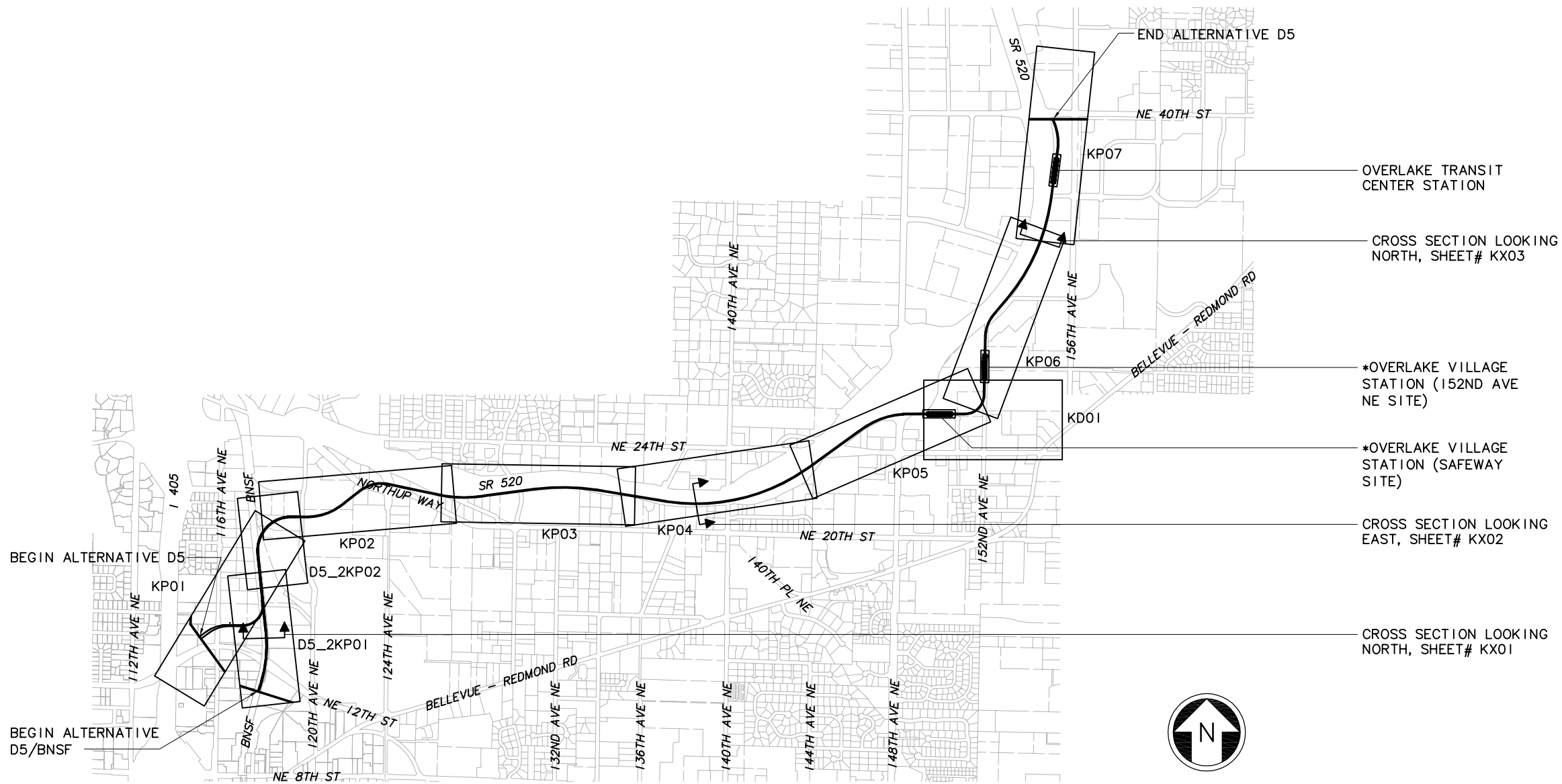


XREF'S
Resolved

ELD_D5_KA
ELD_D5_KA_I
REG-DCON
ZG-2234H
x0531rx
x0534rx
x0831rx
x0834rx
x1131rx
x1134rx
x1431rx
x1434rx
x1437rx
x1731rx
x1734rx
x1737rx
x1740rx
x2037rx
x2040rx
Unresolved 2
key_East

LTSCALE
1=1



*OPTIONAL STATION LOCATION, ONLY
ONE WILL BE CHOSEN

c:\work\ELD\ID5_GZ05.dwg
10/16/08 10:56 : eackerm OE5396

No.	Date	Dsn.	Chk.	App.	Revisions

Designed By:
Drawn By:
Checked By:
Approved By:

FEIS
CONCEPTUAL

CH2MHILL
IN ASSOCIATION WITH
PARSONS & INCA
ENGINEERS INC.

Submitted:Date:Approved:Date:

Approved:Date:


**SOUNDTRANSIT**

Date:

Scale:	NTS
Filename:	ELDID5_GZ05.dwg
Contract No.:	EL_SEG_D
Date:	

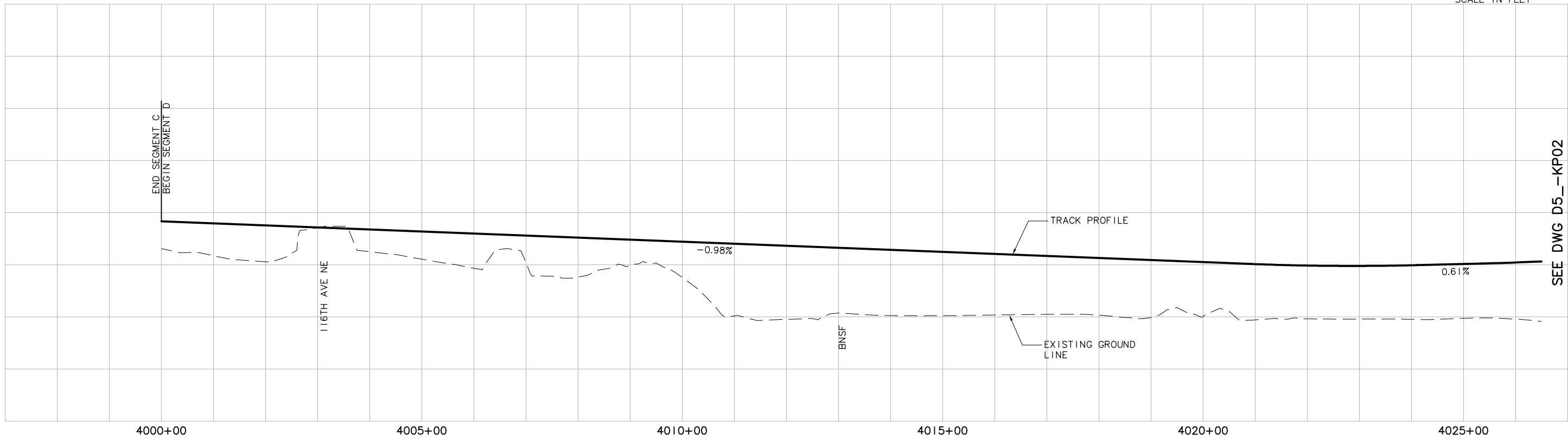
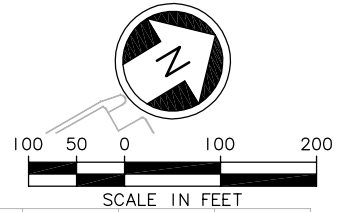
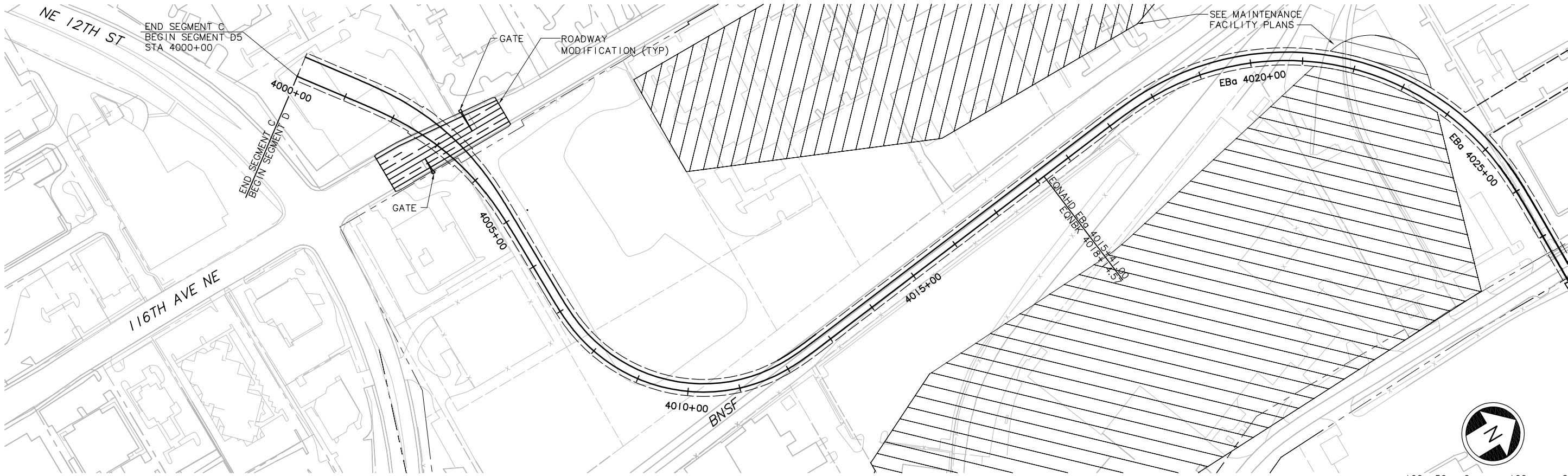
EAST LINK PROJECT
SEGMENT D
ALTERNATIVE D5

KEY PLAN



Drawing No.:	D5_GZ05
Sheet No.:	Rev.:
D-61	

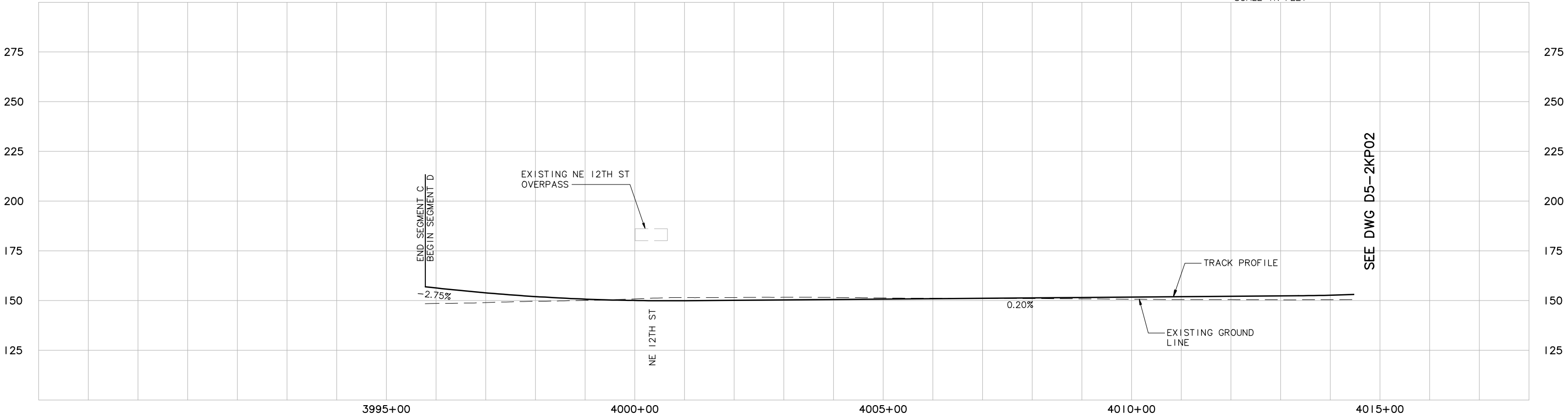
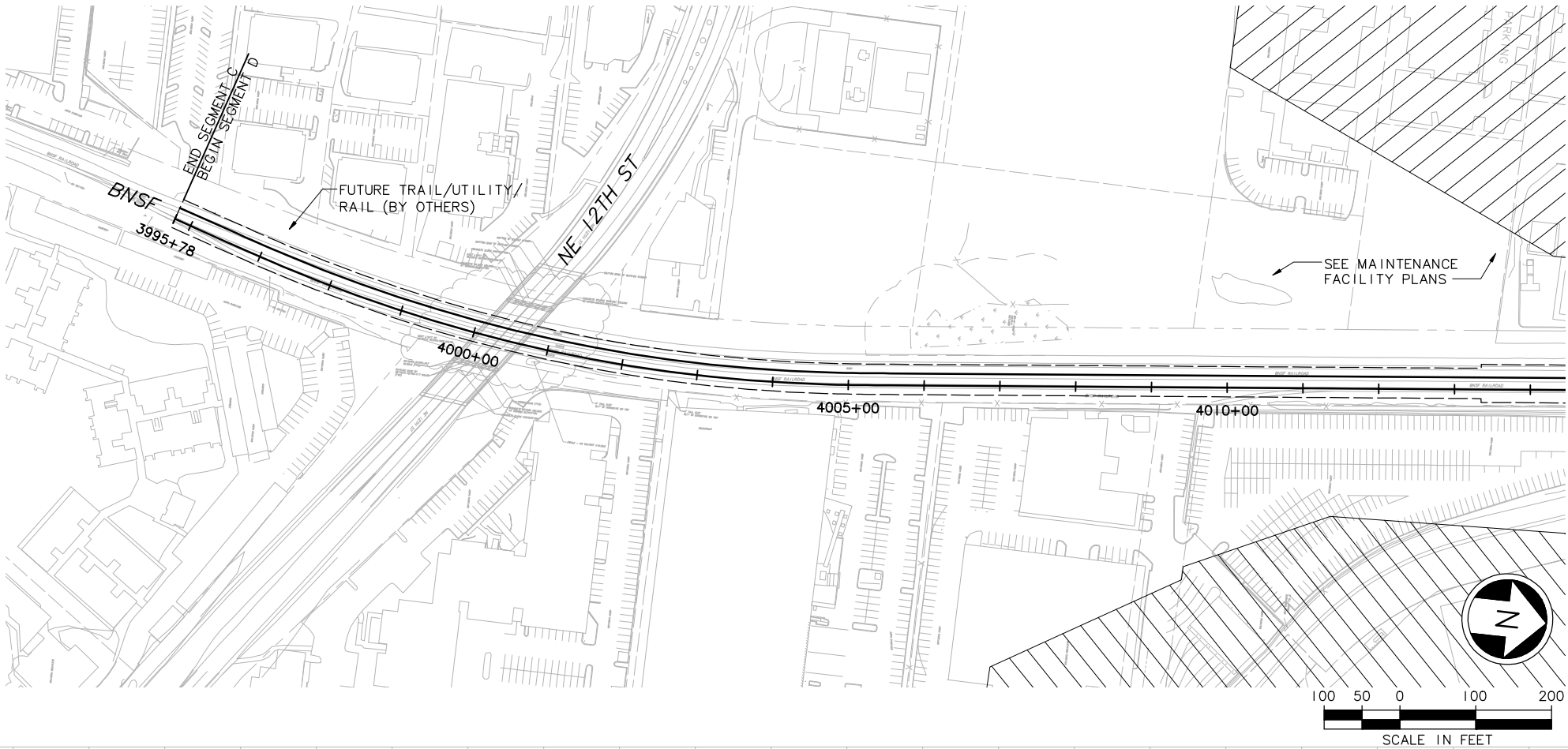
XREF'S
Resolved
ELD_D5__CM
ELD_D5__V0
ELD_D5__KA
REG-DCON
ZG-2234H
ZG-G10010
x0531rx
x0531sf
x0534rx
x0534sf
x0834rx
x0834sf
Unresolved
ELD_D5__MF_1
ELD_D5__MF_2
ELD_D5__MF_3
key_East
LTSCALE
1=1



						Designed By:		FEIS CONCEPTUAL	CH2MHILL IN ASSOCIATION WITH PARSONS & INCA ENGINEERS INC.	Grijalva Engineering, L.L.C.		Scale: H: 1"=100'; V: 1"=25'		EAST LINK PROJECT SEGMENT D ALTERNATIVE D5 TRACK PLAN & PROFILE		Drawing No.: D5__KP01	
						Drawn By:						Contract No.: EL_SEG_D				Sheet No.: D-62	
						Checked By:						Date:				Rev.:	
						Approved By:						Date:					
No.	Date	Dsn.	Chk.	App.	Revisions												

DWG. INFO:
LTSCALE:
I=I

XREFs:
-Attach:
-Overlay:
ELD_D5_CW
ELD_D5_KA_I
ZG-2234H
ZG-G10010
x0531rx
x0531sf
x0534rx
x0534sf
x0831rx
x0831sf
-Unresolved:



No.	Date	Dsn.	Chk.	App.	Revisions

Designed By:
Drawn By:
Checked By:
Approved By:

FEIS
CONCEPTUAL

CH2MHILL
IN ASSOCIATION WITH
PARSONS & INCA
ENGINEERS INC.

Grijalva
Engineering, L.L.C.

SOUNDTRANSIT

Scale: H: 1"=100'; V: 1"=25'
Filename: ELDID5_2KP01.dwg
Contract No.: EL_SEG_D
Date:

EAST LINK PROJECT
SEGMENT D
ALTERNATIVE D5/BNSF
TRACK PLAN & PROFILE

Drawing No.:
D5_2KP01

Sheet No.:
D-63

Rev.:

XREF'S

Resolved

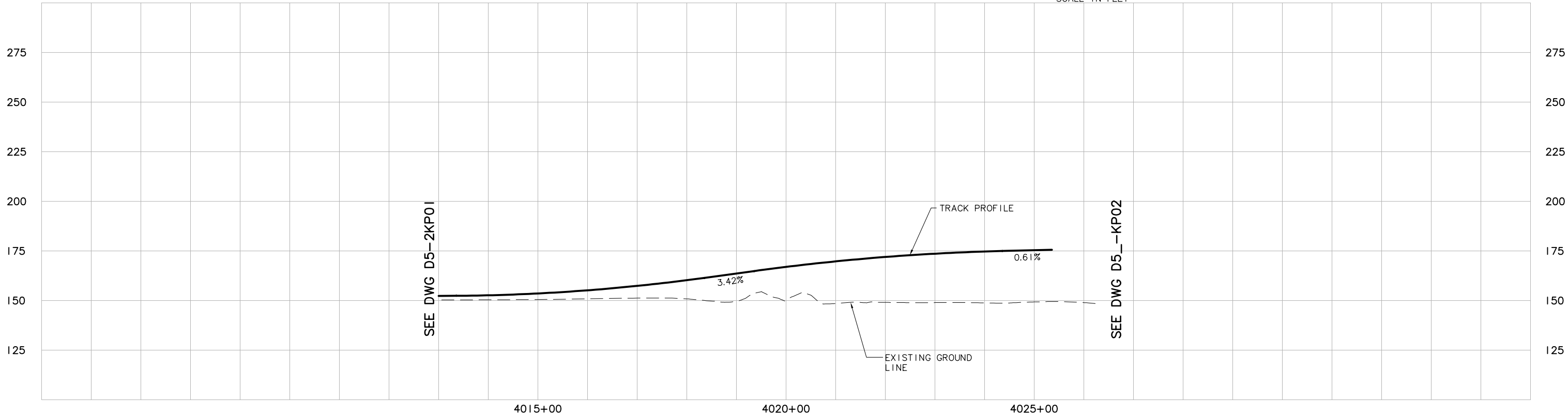
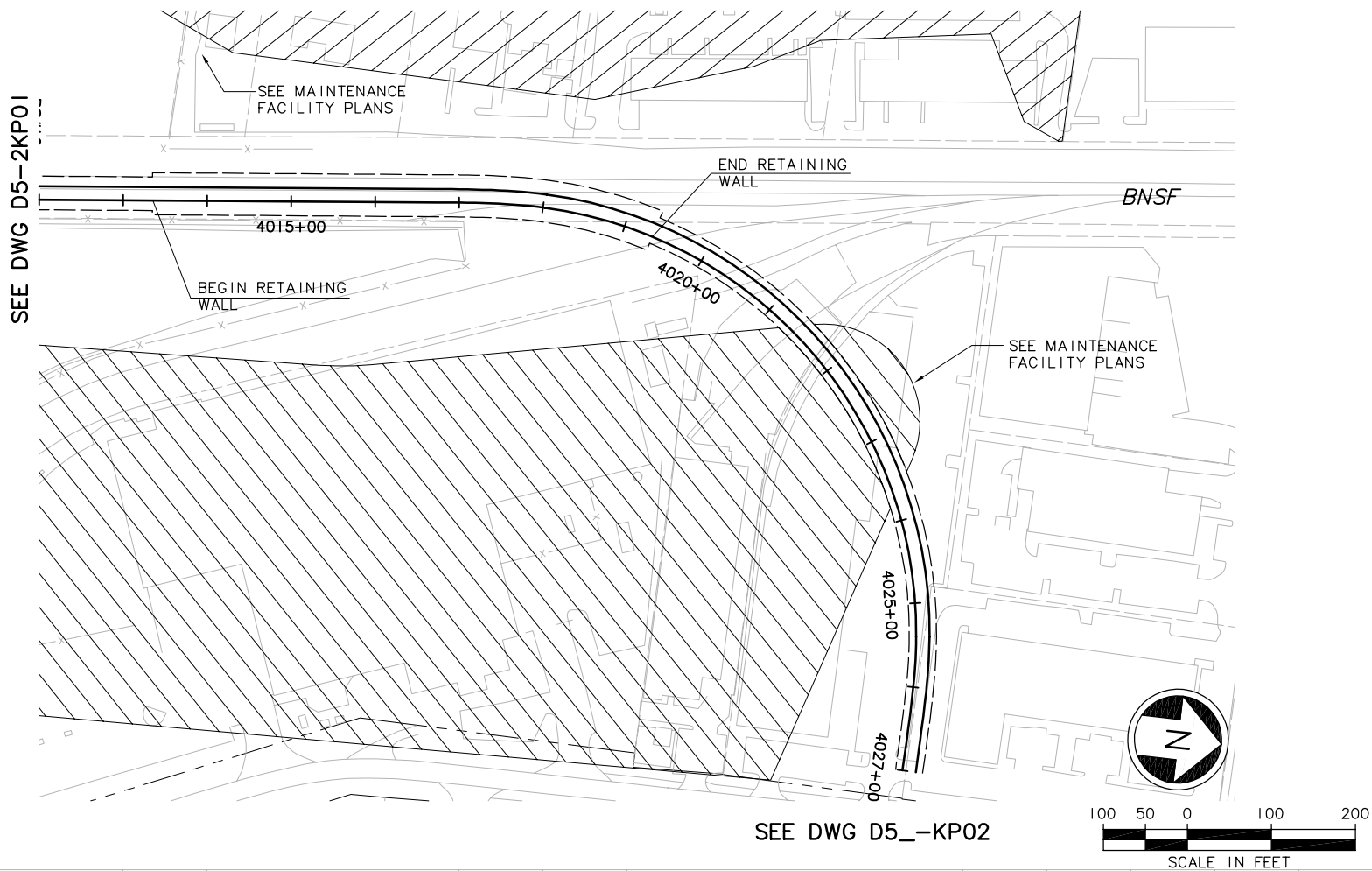
ELD_D5_CM
ELD_D5_KA_I
REG-DCON
ZG-2234H
ZG-G10010
x0534rx
x0534sf
x0834rx
x0834sf

Unresolved

key_East

LTSCALE

I=I



No.	Date	Dsn.	Chk.	App.	Revisions

Designed By:
Drawn By:
Checked By:
Approved By:

FEIS
CONCEPTUAL

CH2MHILL
IN ASSOCIATION WITH
PARSONS & INCA
ENGINEERS INC.

Grijalva
Engineering, L.L.C.

SOUNDTRANSIT

Submitted: Date: Approved: Date:



Scale:
H: 1"=100'; V: 1"=25'
Filename:
ELD1D5_2KP02.dwg
Contract No.:
EL SEG_D
Date:

EAST LINK PROJECT
SEGMENT D
ALTERNATIVE D5/BNSF
TRACK PLAN & PROFILE



Drawing No.:
D5_2KP02
Sheet No.: Rev.:
D-64

c:\work\ELD1D5_2KP02.dwg
10/16/08 10:55 : eackerm OE5396

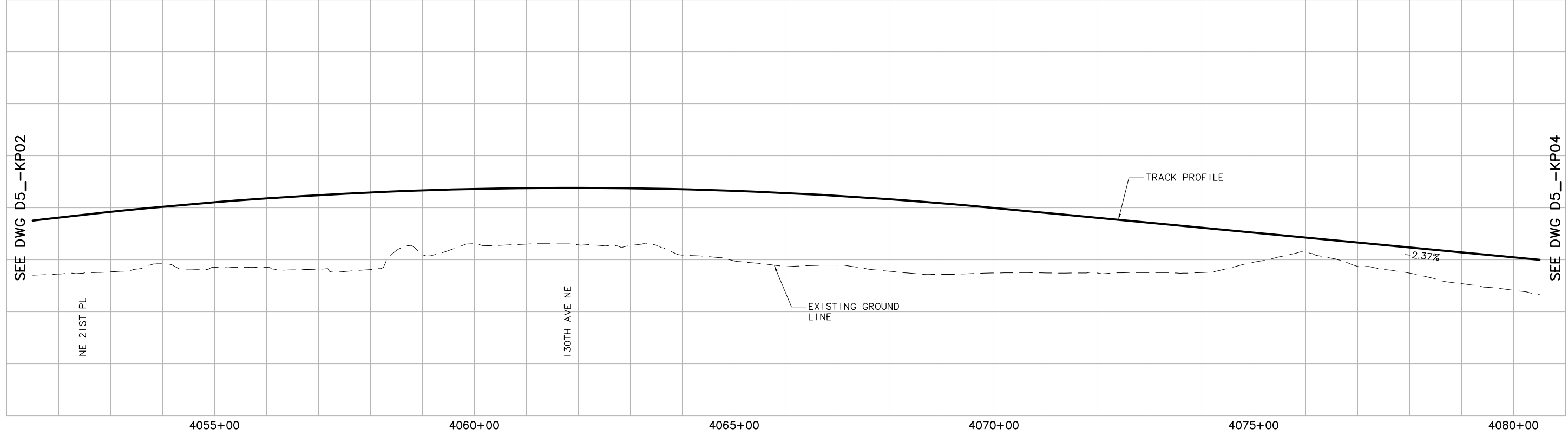
						Designed By:	<div>FEIS CONCEPTUAL</div>	<div>CH2MHILL</div> <div>IN ASSOCIATION WITH</div> <div>PARSONS & INCA ENGINEERS INC.</div>		Grijalva Engineering, L.L.C.		<div></div> <div>SOUNDTRANSIT</div>		Scale: H: 1"= 100'; V: 1"= 25' Filename: ELD1D5__KP02.dwg Contract No.: EL_SEG_D		<div>EAST LINK PROJECT SEGMENT D ALTERNATIVE D5 TRACK PLAN & PROFILE</div> <div></div>				Drawing No.: D5__—KP02	
						Drawn By:				Approved:		Date:		Date:		Sheet No.: Rev.:					
						Checked By:										D-65					
						Approved By:															
No.	Date	Dsn.	Chk.	App.	Revisions			Submitted:	Date:					Date:							

XREF'S
Resolved
ELD_520FUT
ELD_D5_CM
ELD_D5_KA
REG-DCON
ZG-2234H
ZG-G10010
x0834rx
x0834sf
x1134rx
x1134sf
Unresolved
key_East

LTSCALE
1=1

SEE DWG D5_-KP02

SEE DWG D5_-KP04



c:\work\ELD1D5_KP03.dwg
10/16/08 10:58 : eackerm OE5396

						Designed By:
						Drawn By:
						Checked By:
						Approved By:
No.	Date	Dsn.	Chk.	App.	Revisions	

FEIS
CONCEPTUAL

CH2MHILL
IN ASSOCIATION WITH
PARSONS & INCA
ENGINEERS INC.

Grijalva
Engineering, L.L.C.

SOUNDTRANSIT

Scale:
H: 1"=100'; V: 1"=25'
Filename:
ELD1D5_KP03.dwg
Contract No.:
EL_SEG_D
Date:

EAST LINK PROJECT
SEGMENT D
ALTERNATIVE D5
TRACK PLAN & PROFILE



Drawing No.: D5_-KP03	Rev.:
Sheet No.:	D-66

XREF'S
Resolved
ELD_520FUT
ELD_D5_CM
ELD_D5_JO
ELD_D5_KA
REG-DCON
ZG-2234H
ZG-G10010
x1134rx
x1134sf
x1434rx
x1434sf
Unresolved
key_East

LTSCALE

l=

SEE DWG D5_-KP03

SEE DWG D5_-KP05

NE 24TH ST

140TH AVE NE

SR 520 WB

SR 520 EB

EBa 4105+00

EBa 4100+00

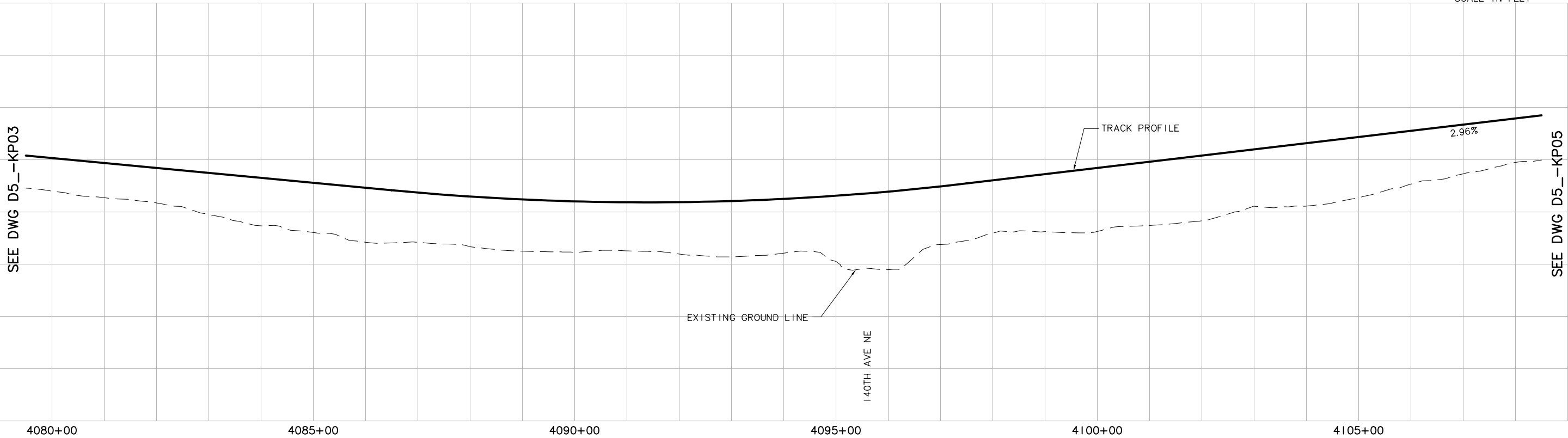
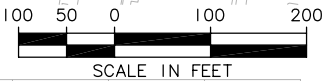
EBa 4095+00

EBa 4090+00

EBa 4085+00

EBa 4080+00

TRACTION POWER
SUB STATION



						Designed By:
						Drawn By:
						Checked By:
						Approved By:
No.	Date	Dsn.	Chk.	App.	Revisions	

FEIS
CONCEPTUAL

CH2MHILL
IN ASSOCIATION WITH
PARSONS & INCA
ENGINEERS INC.

Grijalva
Engineering, L.L.C.

SOUNDTRANSIT

Scale:
H: 1"=100'; V: 1"=25'
Filename:
ELD1D5_-KP04.dwg
Contract No.:
EL_SEG_D
Date:

EAST LINK PROJECT
SEGMENT D
ALTERNATIVE D5
TRACK PLAN & PROFILE



Drawing No.:
D5_-KP04
Sheet No.:
Rev.:
D-67

c:\work\ELD1D5_-KP04.dwg
10/16/08 10:58 : eackerm OE5396

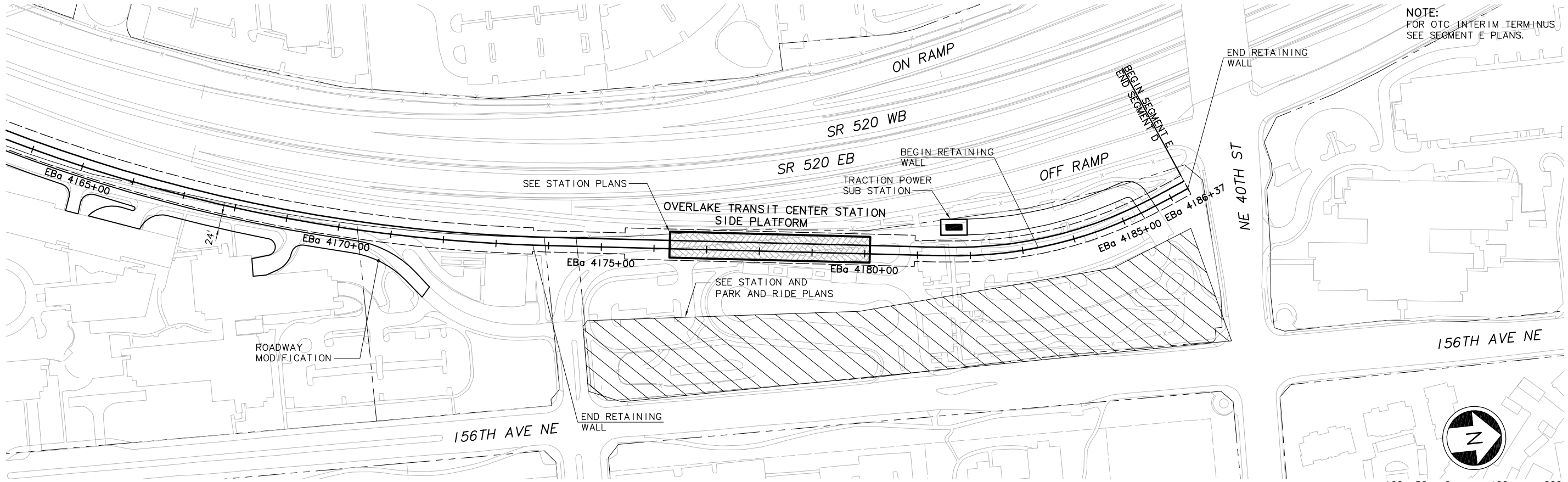
\\work\ELDID5__KP05.dwg 10/16/08 10:58 : eackerm QF5396

						Designed By:	<div>FEIS CONCEPTUAL</div>	<div>CH2MHILL</div> <div>IN ASSOCIATION WITH</div> <div>PARSONS & INCA ENGINEERS INC.</div>		Grijalva Engineering, L.L.C.		<div></div> <div>SOUNDTRANSIT</div>		Scale: H: 1"= 100'; V: 1"= 25'		<div>EAST LINK PROJECT SEGMENT D ALTERNATIVE D5 TRACK PLAN & PROFILE</div> <div></div>				Drawing No.: D5__KP06	
						Drawn By:						Filename: ELD1D5__KP06.dwg		Sheet No.: Rev.:							
						Checked By:						Contract No.: EL_SEG_D		D-69							
						Approved By:						Date:									
No.	Date	Dsn.	Chk.	App.	Revisions			Submitted:	Date:	Approved:	Date:										

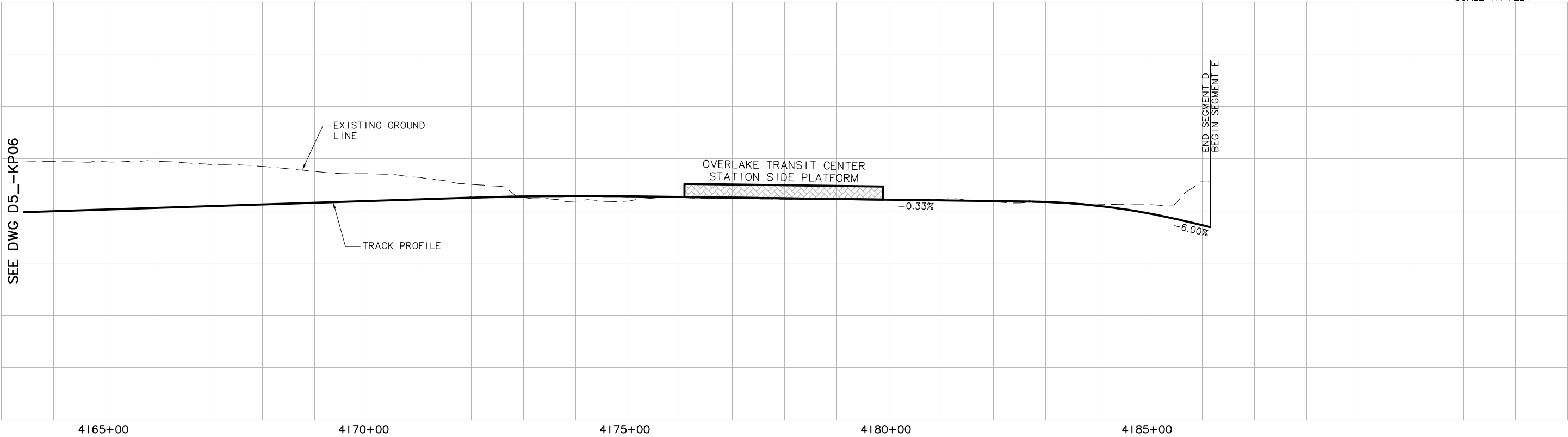
XREF'S
Resolved
ELD_D5_CM
ELD_D5_V0
ELD_D5_KA
ELD_MCRSFT
REG-DCON
ZG-2234H
ZG-G10010
x1737rx
x1737sf
x1740rx
x1740sf
x2037rx
x2037sf
x2040rx
x2040sf
Unresolved
key_East

LTSCALE
1=1

SEE DWG D5_KP06



NOTE:
FOR OTC INTERIM TERMINUS
SEE SEGMENT E PLANS.



c:\work\ELD\ID5_KP07.dwg
10/16/08 10:59 : eackerm OE5396

						Designed By:
						Drawn By:
						Checked By:
						Approved By:
No.	Date	Dsn.	Chk.	App.	Revisions	

FEIS
CONCEPTUAL

CH2MHILL
IN ASSOCIATION WITH
PARSONS & INCA
ENGINEERS INC.

Grijalva
Engineering, L.L.C.

SOUNDTRANSIT

Scale:
H: 1"=100'; V: 1"=25'
Filename:
ELD\ID5_KP07.dwg
Contract No.:
EL_SEG_D

EAST LINK PROJECT
SEGMENT D
ALTERNATIVE D5
TRACK PLAN & PROFILE



Drawing No.:
D5_KP07
Sheet No.:
Rev.:
D-70

XREF'S
Resolved

ELD_520FUT
ELD_D5_CM
ELD_D5_KA
ELD_D5_KA_1
ELD_MCRSFT
REG-DCON
ZG-2234H
x1434rx
x1434sf
x1734rx
x1734sf
x1737rx
x1737sf

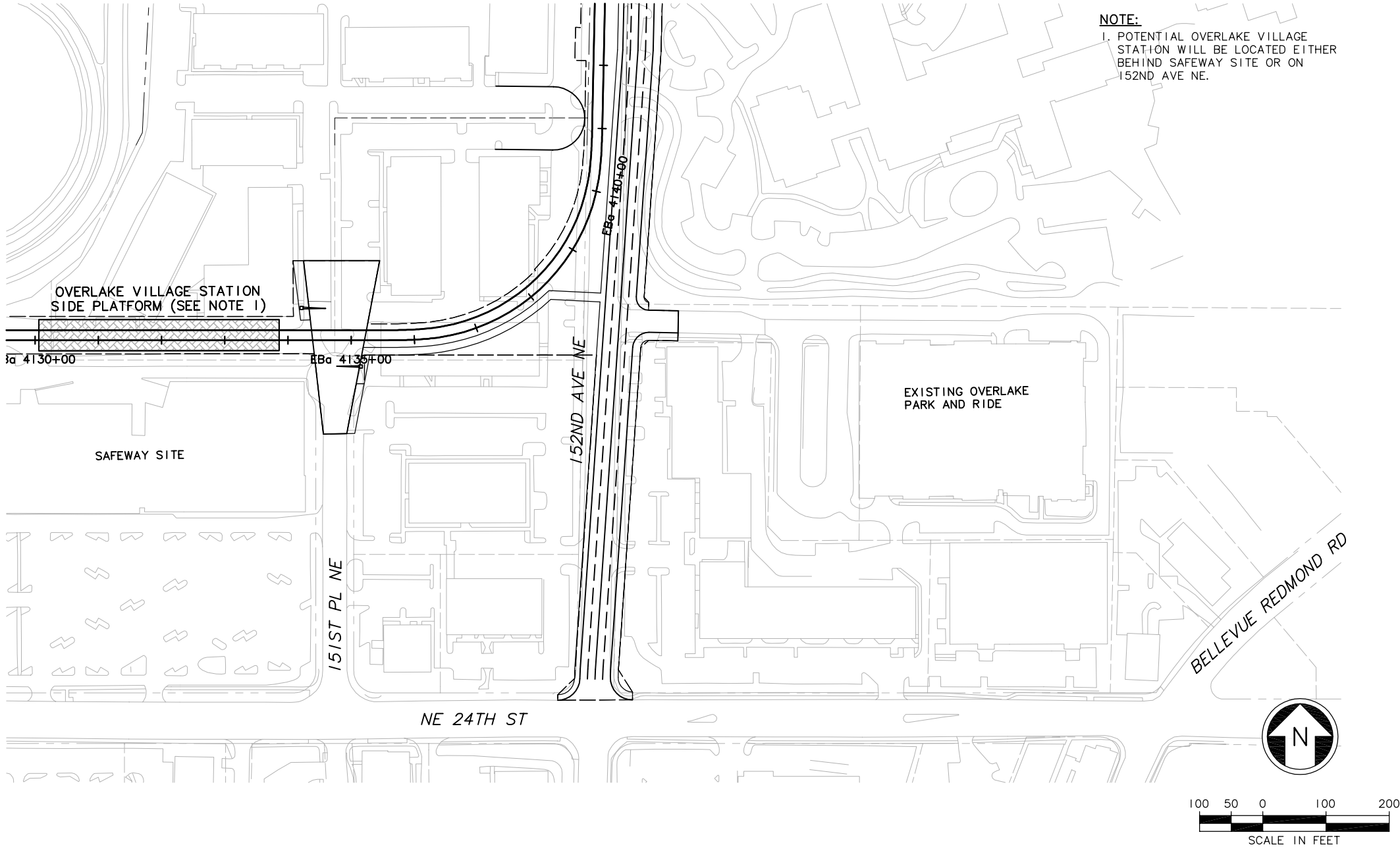
Unresolved

key_East

LTSCALE
1=1

SEE DWG D5_-KP06

NOTE:
1. POTENTIAL OVERLAKE VILLAGE
STATION WILL BE LOCATED EITHER
BEHIND SAFEWAY SITE OR ON
152ND AVE NE.



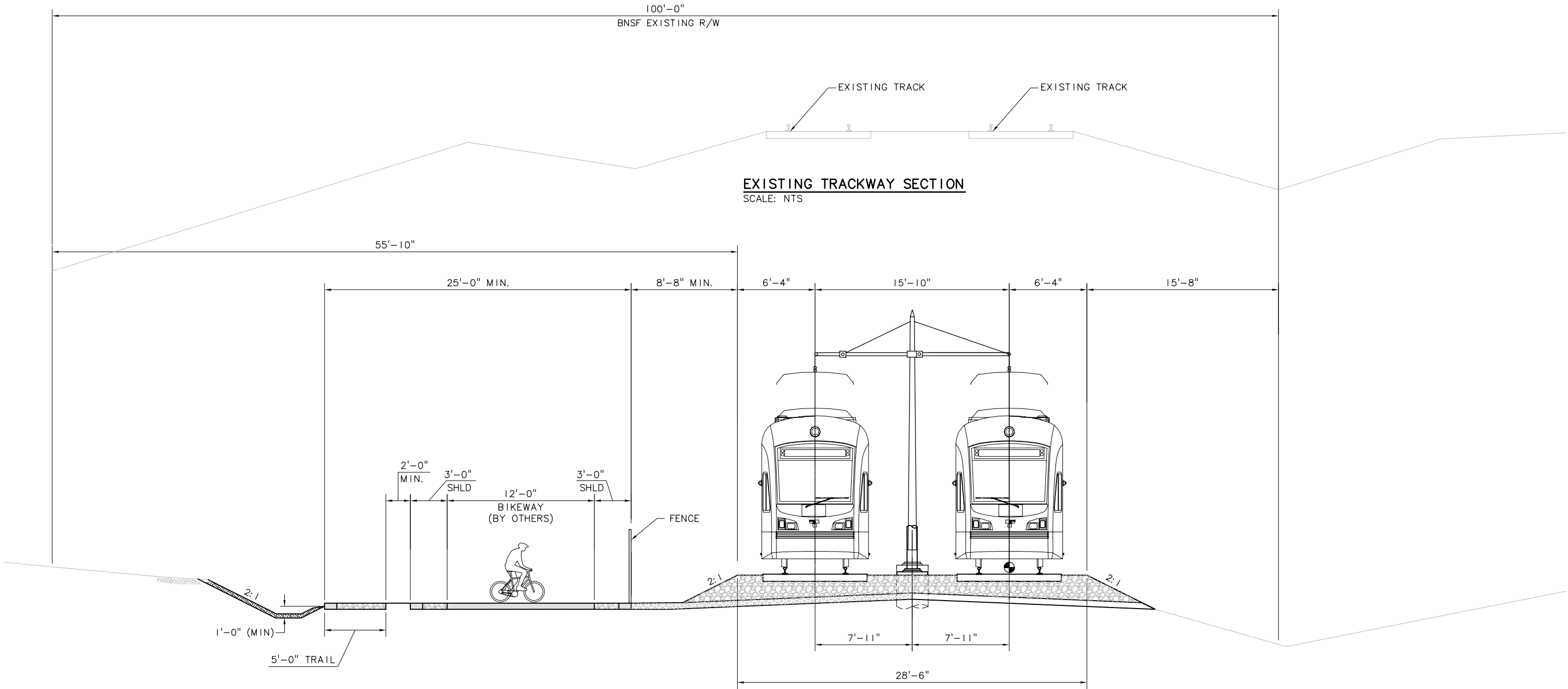
c:\work\ELD\15_KD01.dwg
10/16/08 10:57 : eackerm OE5396

						Designed By:		FEIS CONCEPTUAL	CH2MHILL IN ASSOCIATION WITH PARSONS & INCA ENGINEERS INC.	Grijalva Engineering, L.L.C.		Scale: H: 1"=100'; V: 1"=25'		EAST LINK PROJECT SEGMENT D ALTERNATIVE D5 ROAD MODIFICATION PLAN 152ND AVE NE		Drawing No.: D5_-KD01	
						Drawn By:						Contract No.: EL_SEG_D				Sheet No.: Rev.:	
						Checked By:						Date:				D-71	
						Approved By:						Date:					
No.	Date	Dsn.	Chk.	App.	Revisions			Submitted:		Approved:		Date:					

XREF'S
Resolved
Z0-2234H
REG-DCON
Unresolved
LTSCALE
1=1

1
2
3
4
5

c:\work\ELD1D5_KX01.dwg
10/16/08 10:59 : eackerm OE5396



PROPOSED LRT SECTION – BNSF
ALIGNMENT: D5
AT-GRADE BALLASTED DOUBLE TRACK GUIDEWAY
SCALE: NTS

No.	Date	Dsn.	Chk.	App.	Revisions

Designed By:
Drawn By:
Checked By:
Approved By:

FEIS
CONCEPTUAL

CH2MHILL
IN ASSOCIATION WITH
PARSONS & INCA
ENGINEERS INC.

Grijalva
Engineering, L.L.C.

SOUNDTRANSIT

Scale: NTS
Filename: ELD1D5_KX01.dwg
Contract No.: EL_SEG_D
Date:

EAST LINK PROJECT
SEGMENT D
ALTERNATIVE D5
TYPICAL SECTION



Drawing No.: D5_KX01
Sheet No.: Rev.:
D-72

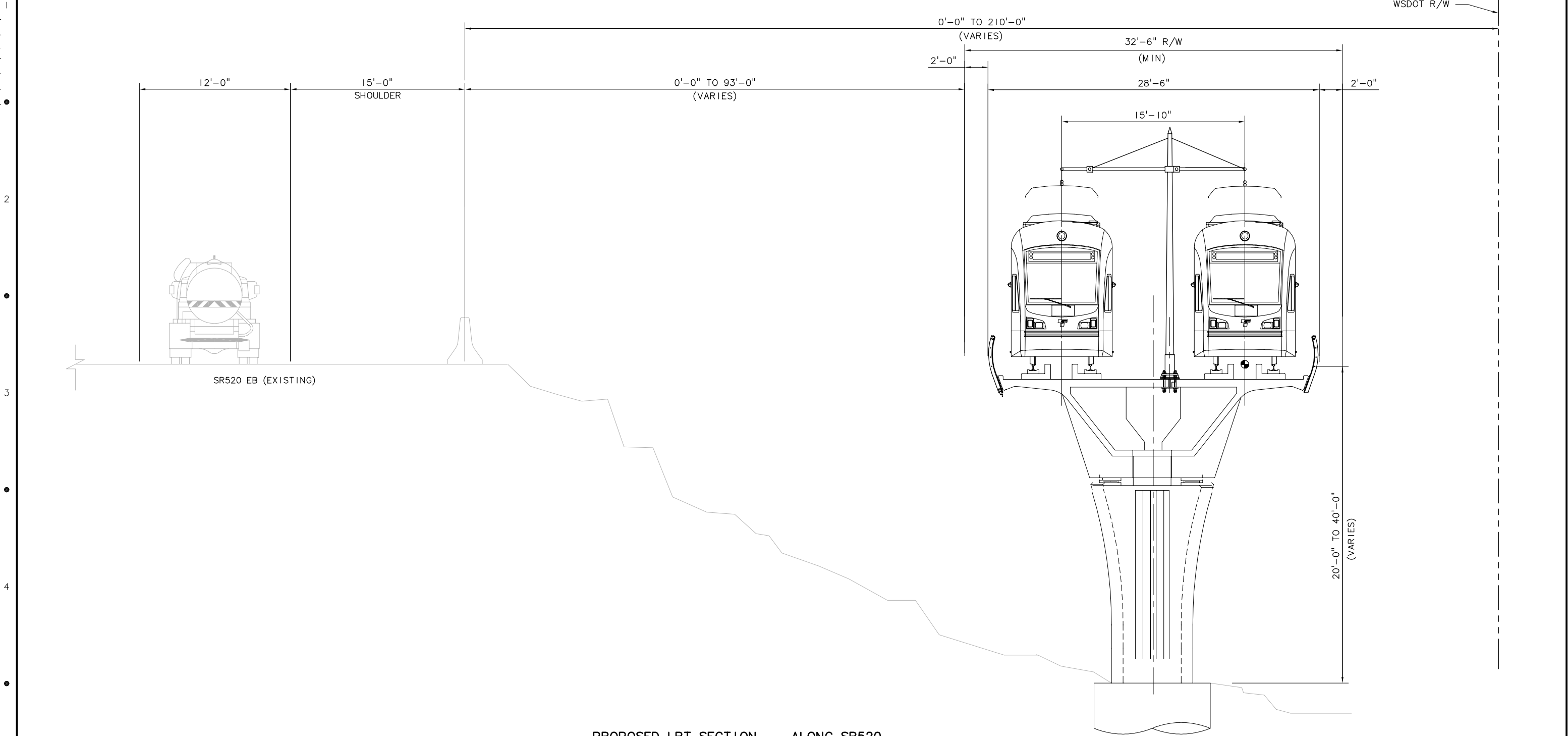
XREF'S

Resolved

Zg-2234h
REG-DCON

Unresolved

LTSCALE
1=1



PROPOSED LRT SECTION - ALONG SR520
ALIGNMENT: D5
TRACK TYPE: DIRECT FIXATION DOUBLE TRACK GUIDEWAY
SCALE: NTS

c:\work\ELD\ID5_KX02.dwg
10/16/08 11:00 : eackerm OE5396

						Designed By:
						Drawn By:
						Checked By:
						Approved By:
No.	Date	Dsn.	Chk.	App.	Revisions	

FEIS
CONCEPTUAL



Grijalva
Engineering, L.L.C.



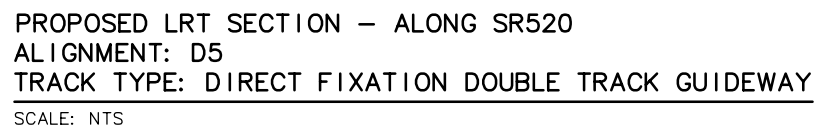
Scale:	NTS
Filename:	ELDID5_KX02.dwg
Contract No.:	EL_SEG_D
Date:	

EAST LINK PROJECT
SEGMENT D
ALTERNATIVE D5
TYPICAL SECTION



Drawing No.:	D5_KX02
Sheet No.:	Rev.:
D-73	

c:\work\ELDID5__KX03.dwg
10/16/08 11:00 : eackerm OF5396



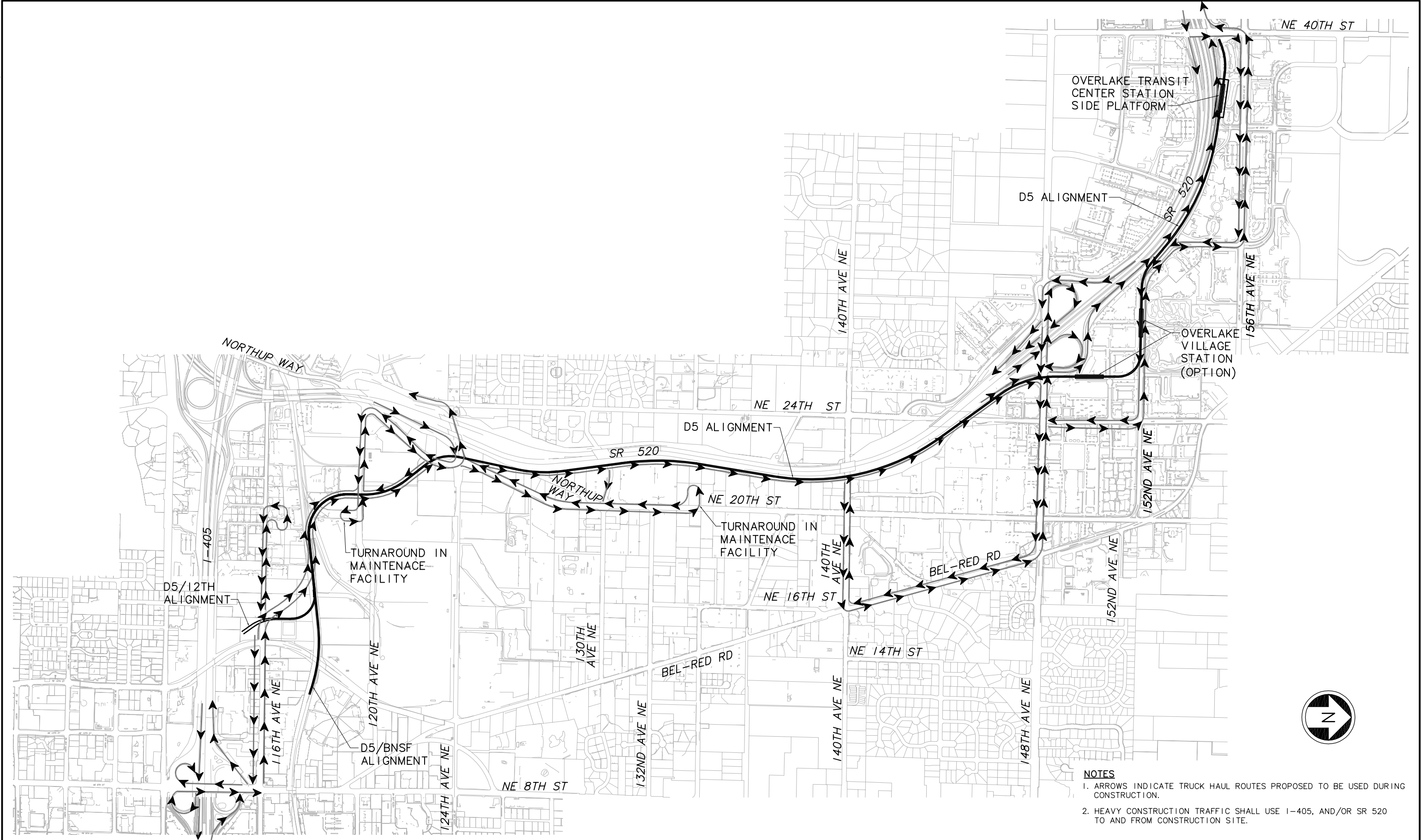
						Designed By:	FEIS CONCEPTUAL	<div><div>CH2MHILL</div><div>IN ASSOCIATION WITH</div><div>PARSONS & INCA ENGINEERS INC.</div></div>	Grijalva Engineering, L.L.C.	<div><div><div>S</div></div><div>SOUNDTRANSIT</div></div>	Scale: NTS	<div>EAST LINK PROJECT SEGMENT D ALTERNATIVE D5 TYPICAL SECTION</div> <div><div>THIS PRINT REDUCED HALF SCALE</div></div>	Drawing No.: D5_-KX03
						Drawn By:					Filename: ELDID5__KX03.dwg		Sheet No.: Rev.:
						Checked By:		Contract No.: EL_SEG_D					
						Approved By:		Submitted: Date: Approved: Date:	D-74				
No.	Date	Dsn.	Chk.	App.	Revisions								

XREF'S
Resolved


ELD_D5__KA
ELD_D5__KA_1
REG-DGON
Zg-2234h
x0228rx
x0228sf
x0231rx
x0231sf
x0528rx
x0528sf
x0531rx
x0531sf
x0534rx
x0534sf
x0828rx
x0828sf
x0831rx
x0831sf
x0834rx
x0834sf
x1131rx
x1131sf
x1134rx
x1134sf
x1431rx
x1431sf
x1434rx
x1434sf
x1437rx
x1437sf
x1731rx
x1731sf
x1734rx
x1734sf
x1737rx
x1737sf
x1740rx
x1740sf
x2037rx
x2037sf
x2040rx
x2040sf
Unresolved

LTSCALE
1=1

c:\work\ELD\ID5__CC01.dwg
10/16/08 10:56 : eackerm OE5396



- NOTES**
1. ARROWS INDICATE TRUCK HAUL ROUTES PROPOSED TO BE USED DURING CONSTRUCTION.
 2. HEAVY CONSTRUCTION TRAFFIC SHALL USE I-405, AND/OR SR 520 TO AND FROM CONSTRUCTION SITE.

						Designed By:	FEIS CONCEPTUAL			CH2MHILL			Scale: NTS	EAST LINK PROJECT SEGMENT D ALTERNATIVE D5 CONSTRUCTION TRUCK HAUL ROUTE PLAN		Drawing No.: D5__CC01	
						Drawn By:						Filename: ELD\ID5__CC01.dwg	Sheet No.: Rev.:				
						Checked By:						Contract No.: EL_SEG_D	D-75				
						Approved By:						Date:					
No.	Date	Dsn.	Chk.	App.	Revisions			Submitted:		Date:	Approved:		Date:				