

XREF'S  
 Resolved  
 ELD\_D2A\_KA  
 ELD\_OVEA\_IAS  
 REG-DCON  
 X1734CN  
 X1734SF  
 X1737CN  
 X1737SF  
 ZG-2234H  
 x1734rx  
 x1737rx  
 Unresolved

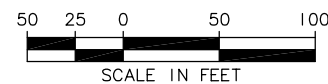
LTSCALE  
 1=1

**NOTES/LEGEND HEADING**

I. ALIGNMENTS D2A AND D2E

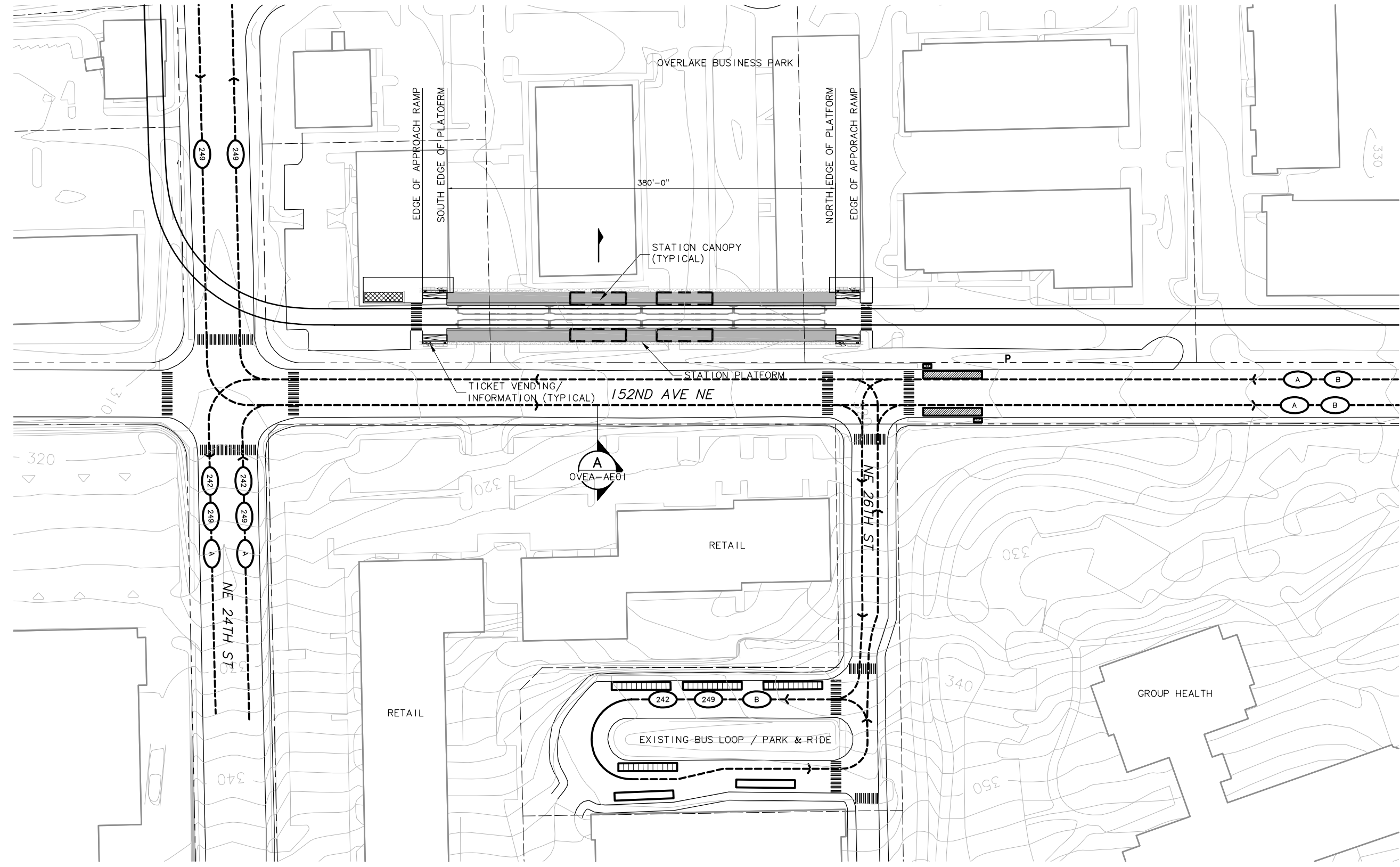
**SYMBOLS KEY**

- NEW BUS STOP
- EXISTING BUS STOP
- BUS LAYOVER
- BUS SHELTER
- PARATRANSIT STOP
- BUS ROUTE
- BUS ROUTE :  
227, 233, 245, 253
- BUS ROUTE :  
239, 269, 441
- MICROSOFT SHUTTLE
- BIKE STORAGE
- BIKE SHELTER
- CROSSWALK
- LANDSCAPE
- TICKET VENDING/  
INFORMATION
- TRACK



**STATION ACCESS PLAN**

SCALE: 1" = 50'



Designed By:	
Drawn By:	
Checked By:	
Approved By:	

No.	Date	Dsn.	Chk.	App.	Revisions

**FEIS  
CONCEPTUAL**

**CH2MHILL**  
 IN ASSOCIATION WITH  
**PARSONS & INCA**  
 ENGINEERS INC.

**IBI**  
 GROUP

**SOUNDTRANSIT**

Scale: 1"=50'  
 Filename: ELD\OVEA\_AS01.dwg  
 Contract No.: EL\_SEG\_D  
 Date:

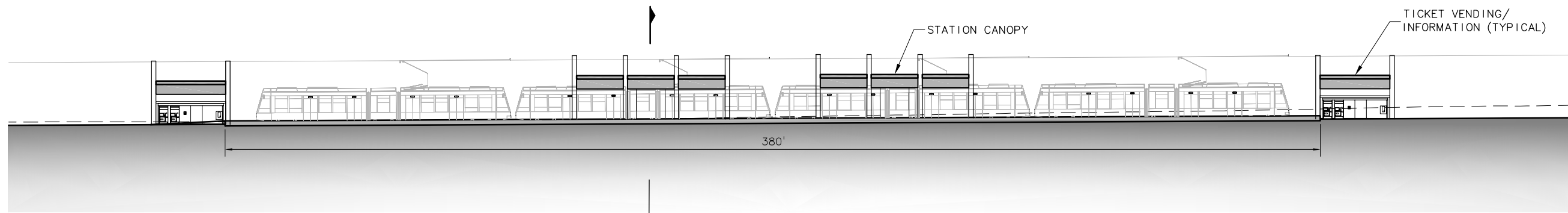
**EAST LINK PROJECT  
 SEGMENT D**  
 OVERLAKE VILLAGE STATION  
 AT-GRADE STATION  
 STATION ACCESS PLAN



Drawing No.: **OVEA-AS01**  
 Sheet No.:  
 Rev.:  
**D-84**

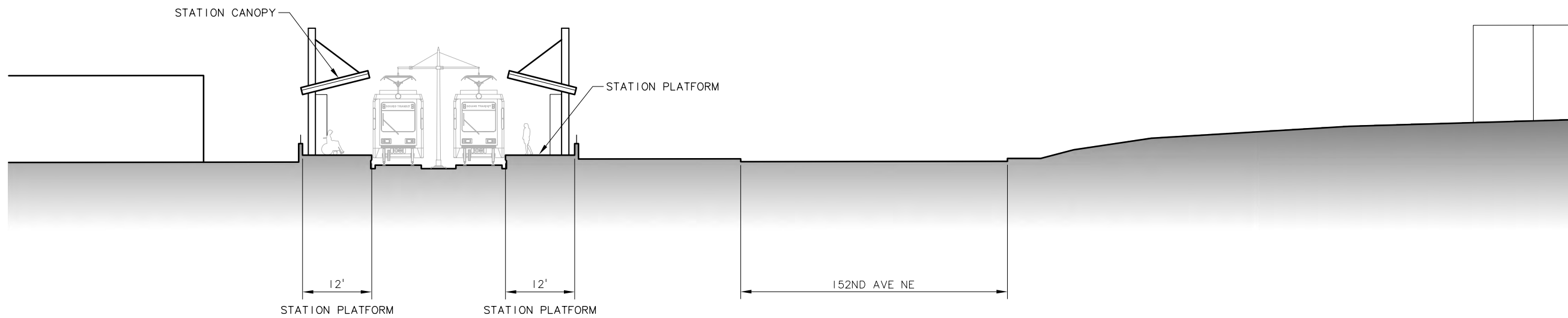
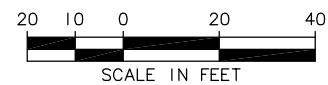
c:\work\ELD\OVEA\_AS01.dwg  
 11/05/08 08:25 : eackerm OE5396

XREF'S  
 Resolved  
 ELD\_OVEA\_IAX  
 ELD\_OVEA\_IAE  
 REG-DCON  
 ZG-2234H  
 Unresolved  
 LTSCALE  
 1=1



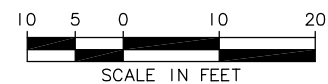
**STATION ELEVATION**

SCALE: 1" = 20'



**STATION SECTION**

SCALE: 1" = 10'



c:\work\ELD\OVEA\_AE01.dwg  
 10/16/08 11:05 : eackerm OE5396

No.	Date	Dsn.	Chk.	App.	Revisions

Designed By:  
 Drawn By:  
 Checked By:  
 Approved By:

**FEIS  
 CONCEPTUAL**

**CH2MHILL**  
 IN ASSOCIATION WITH  
**PARSONS & INCA**  
 ENGINEERS INC.

**IBI GROUP**

**SOUNDTRANSIT**

Scale: 1"=20'  
 Filename: ELD\OVEA\_AE01.dwg  
 Contract No.: EL\_SEG\_D

**EAST LINK PROJECT  
 SEGMENT D**  
 OVERLAKE VILLAGE STATION  
 AT-GRADE STATION  
 ELEVATION, SECTION

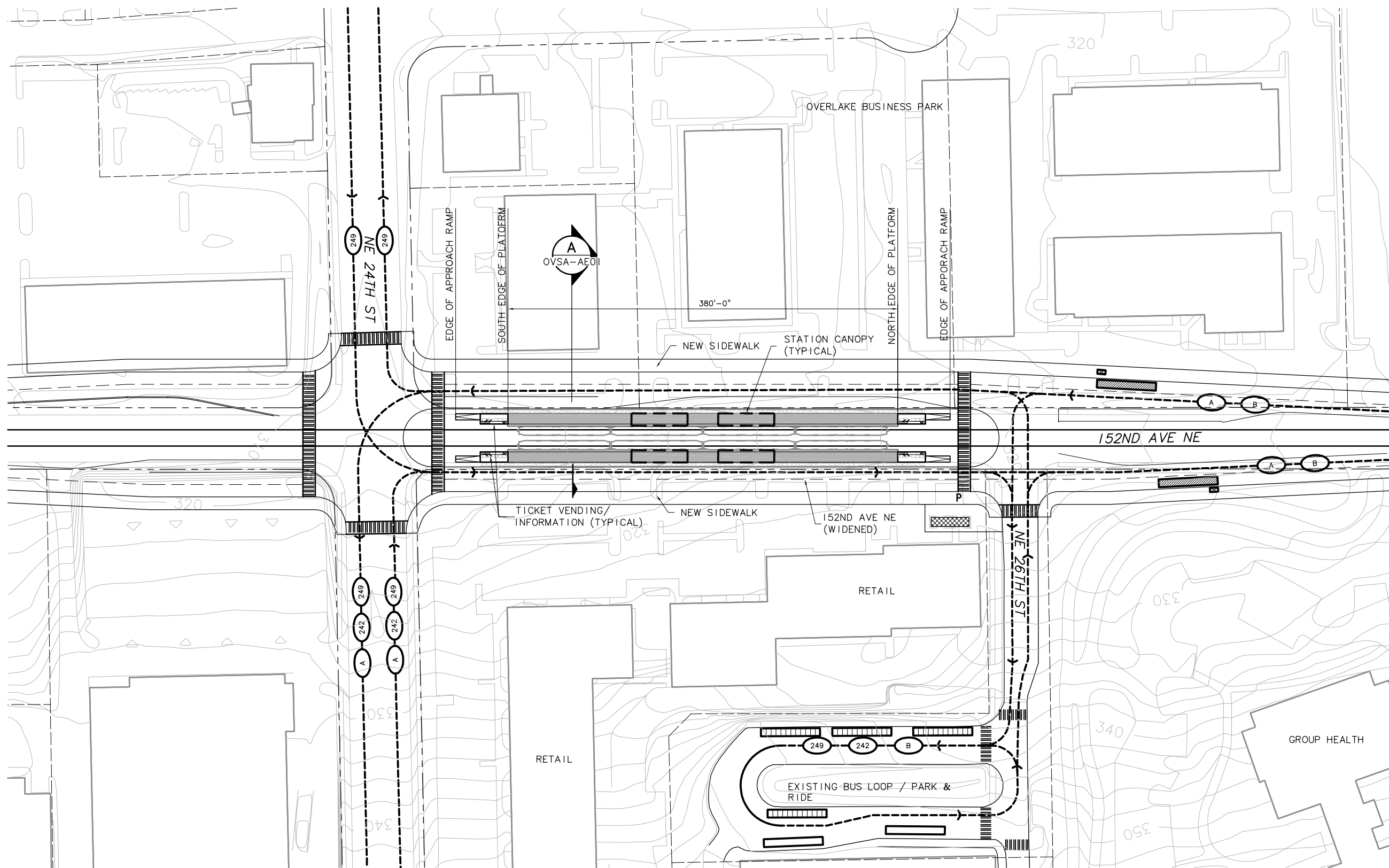


Drawing No.: **OVEA-AE01**  
 Sheet No.:  
 Rev.:  
**D-85**

XREF'S  
 Resolved  
 ELD\_D3\_CM  
 ELD\_D3\_KA  
 ELD\_OVSA\_IAS  
 REG-DCON  
 X1734CN  
 X1734SF  
 X1737CN  
 X1737SF  
 ZG-2234H  
 x1734rx  
 x1737rx  
 Unresolved

LTSCALE  
 1=1

c:\work\ELD\OVSA\_AS01.dwg  
 11/05/08 08:26 : eackerm OE5396

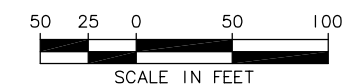


NOTES/LEGEND HEADING

I. ALIGNMENT D3

SYMBOLS KEY

- NEW BUS STOP
- EXISTING BUS STOP
- BUS LAYOVER
- BUS SHELTER
- PARATRANSIT STOP
- BUS ROUTE : 242
- BUS ROUTE : 227, 233, 245, 253
- BUS ROUTE : 239, 269, 441
- MICROSOFT SHUTTLE
- BIKE STORAGE
- BIKE SHELTER
- CROSSWALK
- LANDSCAPE
- TICKET VENDING/ INFORMATION
- TRACK
- TRAIN



STATION ACCESS PLAN

SCALE: 1" = 50'

FEIS  
 CONCEPTUAL

**CH2MHILL**  
 IN ASSOCIATION WITH  
**PARSONS & INCA**  
 ENGINEERS INC.

**IBI**  
 GROUP

**SOUNDTRANSIT**

Scale: 1"=50'  
 Filename: ELD\OVSA\_AS01.dwg  
 Contract No.: EL\_SEG\_D

EAST LINK PROJECT  
 SEGMENT D

OVERLAKE VILLAGE STATION  
 AT-GRADE STATION  
 STATION ACCESS PLAN



Drawing No.: OVSA-AS01

Sheet No.: Rev.:

D-86

No.	Date	Dsn.	Chk.	App.	Revisions

Designed By:  
 Drawn By:  
 Checked By:  
 Approved By:

Submitted:

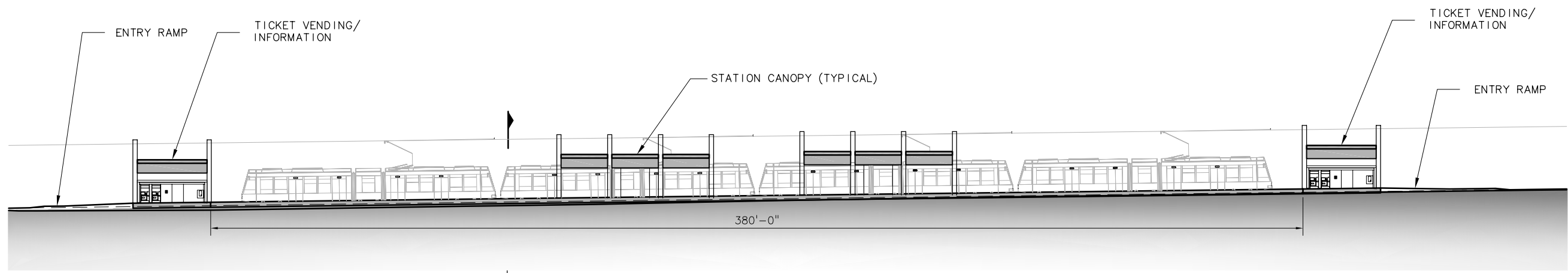
Date:

Approved:

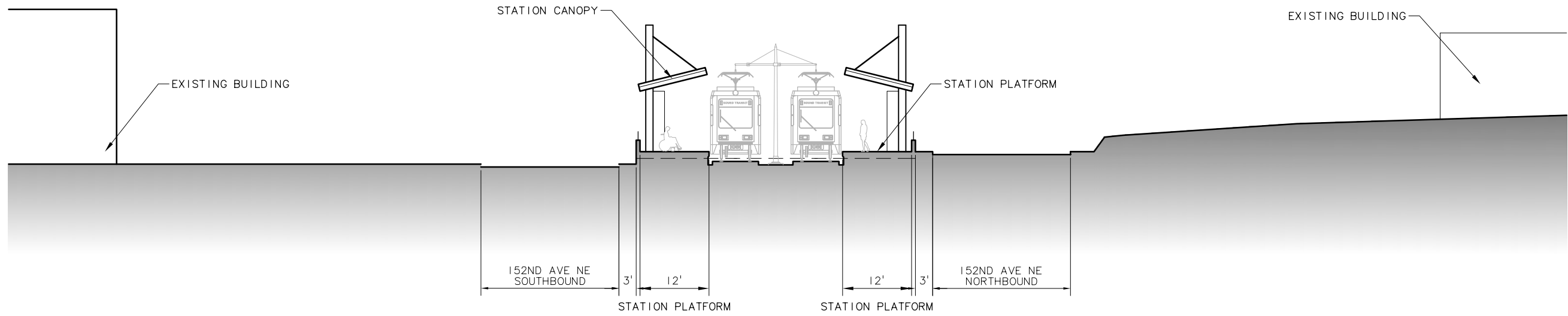
Date:

Date:

XREF'S  
 Resolved  
 ELD\_OVSAIAE  
 ELD\_OVSAIAX  
 REG-DCON  
 ZG-2234H  
 Unresolved  
 LTSCALE  
 1=1



**STATION ELEVATION**  
 SCALE: 1" = 20'



**STATION PLATFORM PLAN A**  
 SCALE: 1" = 10' OVSA-AE01



c:\work\ELD\OVSA\_AE01.dwg  
 10/16/08 11:08 : eackerm OE5396

No.	Date	Dsn.	Chk.	App.	Revisions

Designed By:  
 Drawn By:  
 Checked By:  
 Approved By:

**FEIS  
 CONCEPTUAL**

**CH2MHILL**  
 IN ASSOCIATION WITH  
**PARSONS & INCA**  
 ENGINEERS INC.

**IBI GROUP**

**SOUNDTRANSIT**

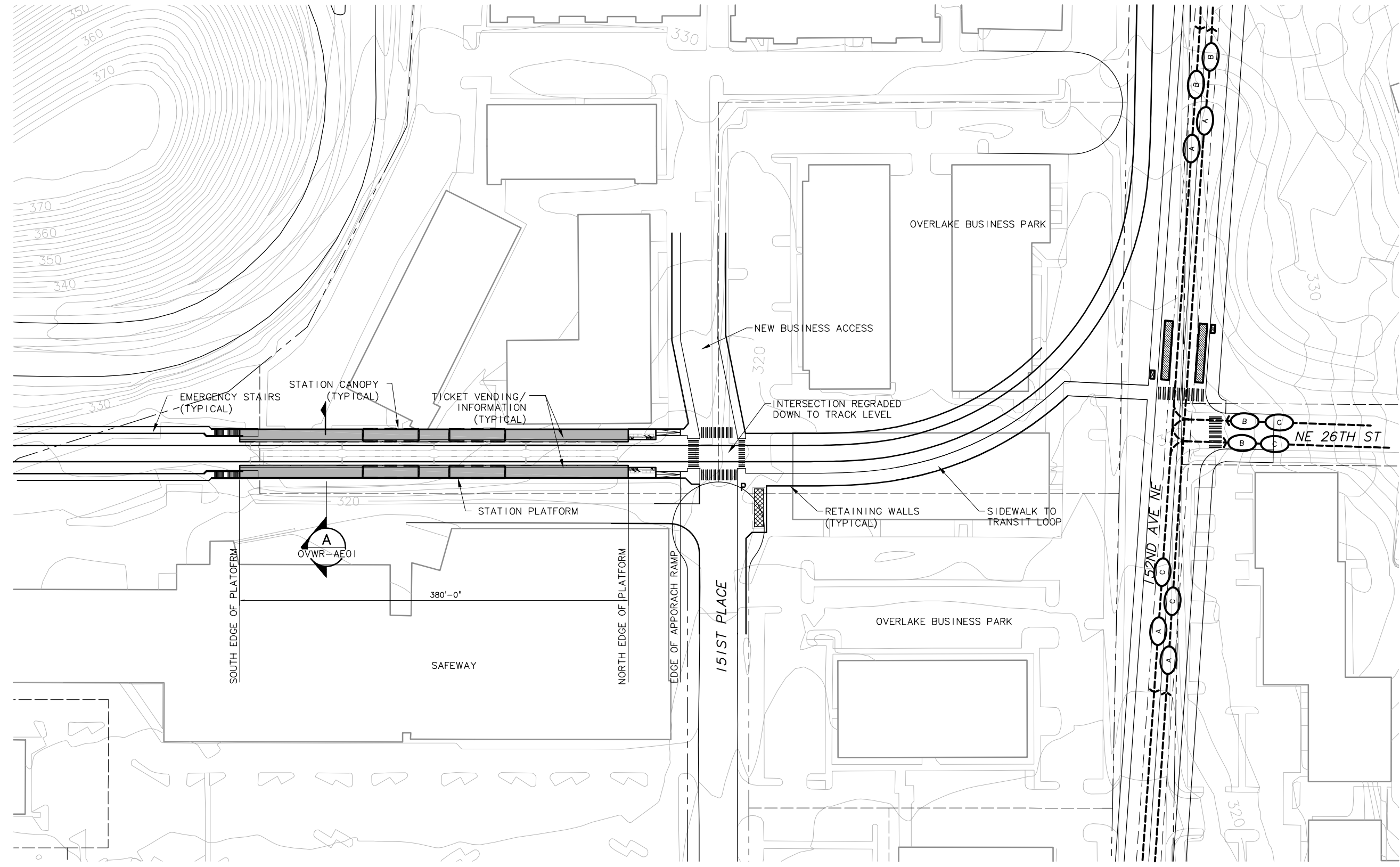
Scale: 1"=20'  
 Filename: ELD\OVSA\_AE01.dwg  
 Contract No.: EL\_SEG\_D

**EAST LINK PROJECT  
 SEGMENT D**  
 OVERLAKE VILLAGE STATION  
 AT-GRADE STATION  
 ELEVATION, SECTION



Drawing No.: **OVSA-AE01**  
 Sheet No.: **D-87**  
 Rev.:

XREF'S  
 Resolved  
 ELD\_D5\_CM  
 ELD\_D5\_KA  
 ELD\_OVWR\_1A5  
 REG-DCON  
 X1734CN  
 X1734SF  
 X1737CN  
 X1737SF  
 ZG-2234H  
 x1734rx  
 x1737rx  
 Unresolved  
 LTSCALE  
 1=1

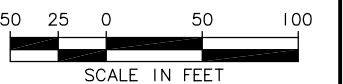


NOTES/LEGEND HEADING

I. ALIGNMENT D5

SYMBOLS KEY

- NEW BUS STOP
- EXISTING BUS STOP
- BUS LAYOVER
- BUS SHELTER
- PARATRANSIT STOP
- BUS ROUTE : 235, 249
- BUS ROUTE : 239, 269, 441
- BUS ROUTE : 242, 249
- MICROSOFT SHUTTLE
- BIKE STORAGE
- BIKE SHELTER
- CROSSWALK
- LANDSCAPE
- TICKET VENDING/ INFORMATION
- TRACK



STATION ACCESS PLAN

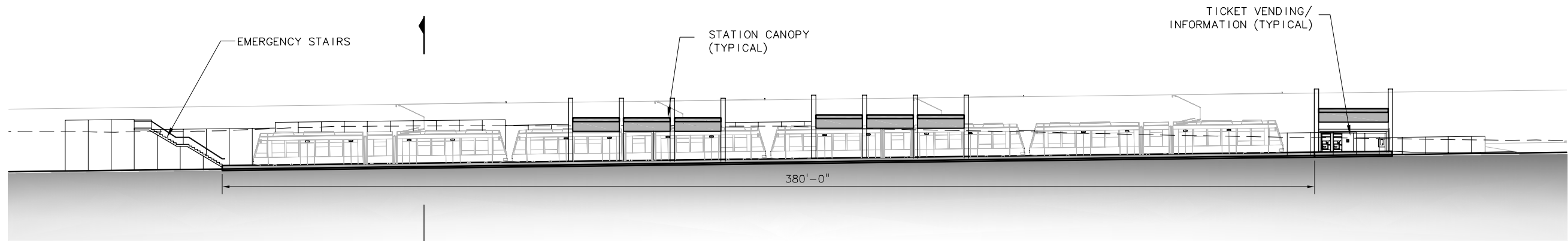
SCALE: 1" = 50'

c:\work\ELD\OVWR\_AS01.dwg  
 11/05/08 08:26 : eackerm OE5396

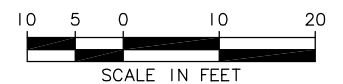
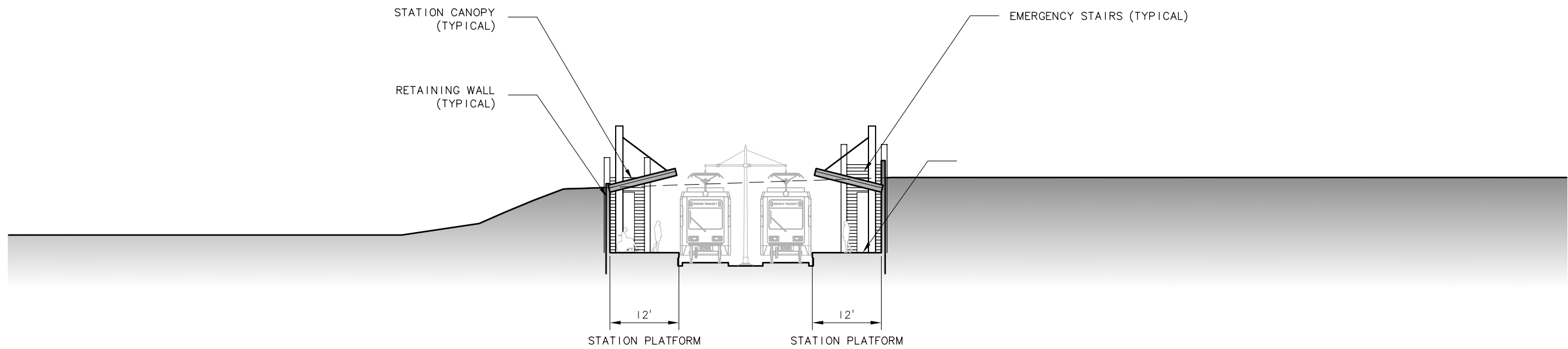
					Designed By:
					Drawn By:
					Checked By:
					Approved By:
No.	Date	Dsn.	Chk.	App.	Revisions

<b>FEIS CONCEPTUAL</b>	 IN ASSOCIATION WITH 			Scale: 1" = 50' Filename: ELD\OVWR_AS01.dwg Contract No.: EL_SEG_D Date:	<b>EAST LINK PROJECT SEGMENT D</b>  OVERLAKE VILLAGE STATION 151ST RETAINED CUT STATION STATION ACCESS PLAN	Drawing No.: OVWR-AS01 Sheet No.: Rev.: <b>D-88</b>
	Submitted:	Date:	Approved:	Date:		

XREF'S  
 Resolved  
 EL\_OVWR1AX  
 ELD\_OVWR1AE  
 REG-DCON  
 ZG-2234H  
 Unresolved  
 LTSCALE  
 1=1



**STATION ELEVATION**  
 SCALE: 1" = 20'



**STATION SECTION A**  
 SCALE: 1" = 10'  
 OVWR-AE01

c:\work\ELD\OVWR-AE01.dwg  
 10/16/08 11:09 : eackerm OE5396

No.	Date	Dsn.	Chk.	App.	Revisions

Designed By:  
 Drawn By:  
 Checked By:  
 Approved By:

**FEIS  
 CONCEPTUAL**

**CH2MHILL**  
 IN ASSOCIATION WITH  
**PARSONS & INCA**  
 ENGINEERS INC.

**IBI  
 GROUP**

**SOUNDTRANSIT**

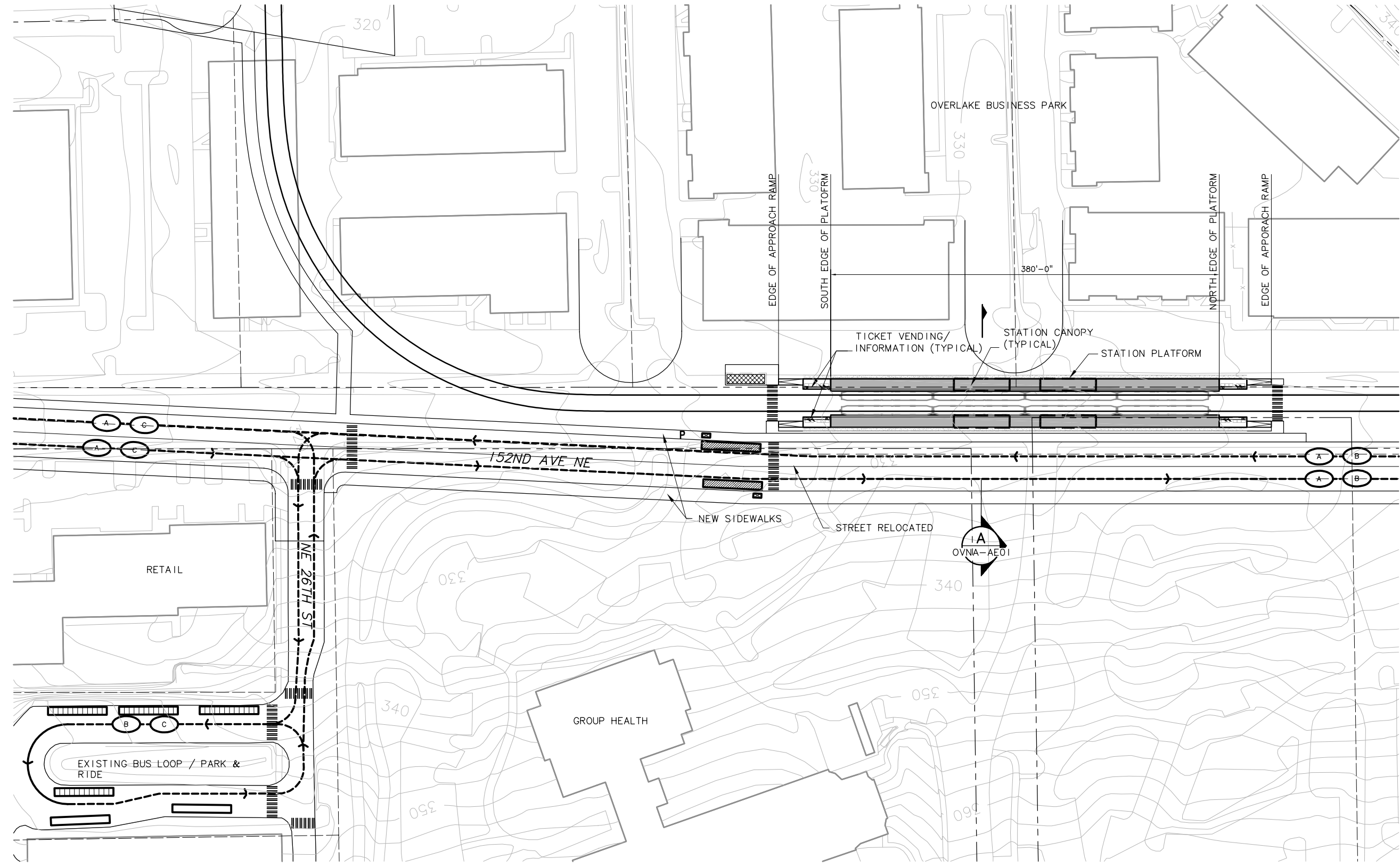
Scale: 1"=20'  
 Filename: ELD\OVWR-AE01.dwg  
 Contract No.: EL\_SEG\_D

**EAST LINK PROJECT  
 SEGMENT D**  
 OVERLAKE VILLAGE STATION  
 151ST RETAINED CUT STATION  
 ELEVATION, SECTION



Drawing No.: OVWR-AE01  
 Sheet No.:  
 Rev.:  
**D-89**

XREF'S  
 Resolved  
 ELD\_D5\_CM  
 ELD\_D5\_KA  
 ELD\_OVNA1AS  
 REG-DCON  
 X1734CN  
 X1734SF  
 X1737CN  
 X1737SF  
 ZG-2234H  
 x1734rx  
 x1737rx  
 Unresolved  
 LTSCALE  
 1=1



**NOTES/LEGEND HEADING**  
 I. ALIGNMENT D5

**SYMBOLS KEY**

- NEW BUS STOP
- EXISTING BUS STOP
- BUS LAYOVER
- BUS SHELTER
- PARATRANSIT STOP
- BUS ROUTE : 227, 233, 245, 253
- BUS ROUTE : 239, 269, 441, MICROSOFT SHUTTLE
- BUS ROUTE : 242, 249
- BIKE STORAGE
- BIKE SHELTER
- CROSSWALK
- LANDSCAPE
- TICKET VENDING/ INFORMATION
- TRACK



**STATION ACCESS PLAN**  
 SCALE: 1" = 50'

c:\work\ELD\OVNA\_AS01.dwg  
 11/05/08 08:25 : eackerm OE5396

No.	Date	Dsn.	Chk.	App.	Revisions

Designed By:  
 Drawn By:  
 Checked By:  
 Approved By:

**FEIS  
 CONCEPTUAL**

**CH2MHILL**  
 IN ASSOCIATION WITH  
**PARSONS & INCA**  
 ENGINEERS INC.

Submitted: \_\_\_\_\_ Date: \_\_\_\_\_

**IBI  
 GROUP**

Approved: \_\_\_\_\_ Date: \_\_\_\_\_

**SOUNDTRANSIT**

Approved: \_\_\_\_\_ Date: \_\_\_\_\_

Scale: 1" = 50'  
 Filename: ELD\OVNA\_AS01.dwg  
 Contract No.: EL\_SEG\_D  
 Date: \_\_\_\_\_

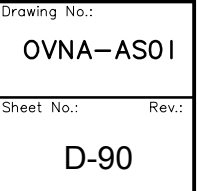
**EAST LINK PROJECT  
 SEGMENT D**

**OVERLAKE VILLAGE STATION  
 AT-GRADE STATION  
 STATION ACCESS PLAN**

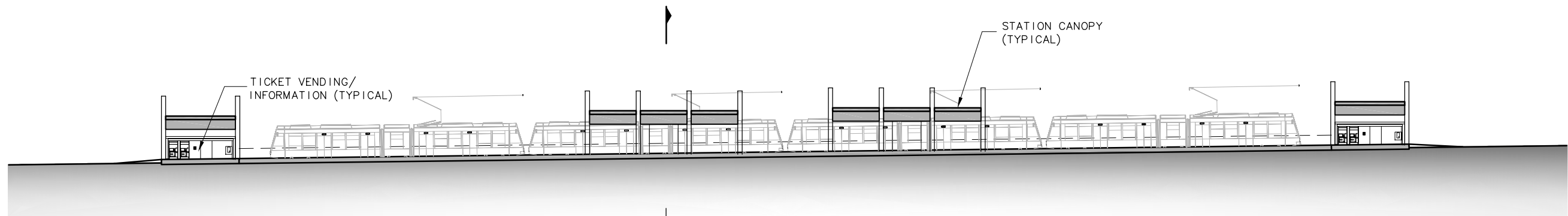
Drawing No.: **OVNA-AS01**

Sheet No.: \_\_\_\_\_ Rev.: \_\_\_\_\_

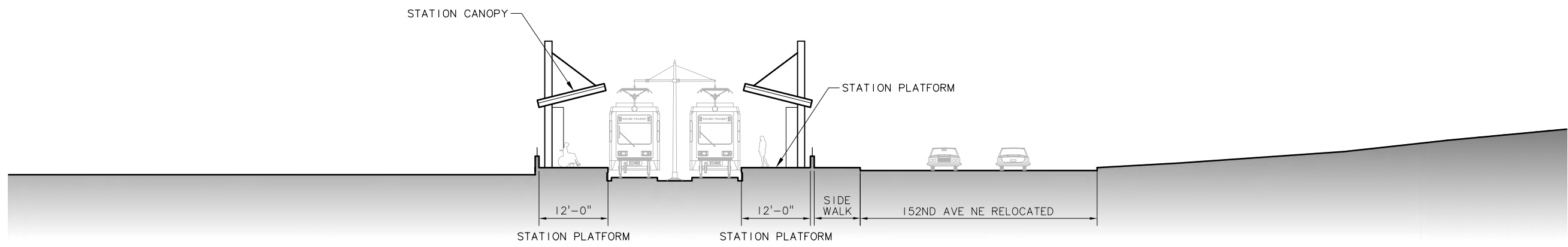
**D-90**



XREF'S  
 Resolved  
 ELD\_OVNA\_IAX  
 ELD\_OVNA\_IAE  
 REG-DCON  
 ZG-2234H  
 Unresolved  
 LTSCALE  
 1=1



**STATION ELEVATION**  
 SCALE: 1" = 20'



**STATION SECTION A**  
 SCALE: 1" = 10'  
 OVNA-AE01

c:\work\ELD\OVNA\_AE01.dwg  
 10/16/08 11:06 : eackerm\_0E5396

No.	Date	Dsn.	Chk.	App.	Revisions

Designed By:  
 Drawn By:  
 Checked By:  
 Approved By:

**FEIS  
 CONCEPTUAL**

**CH2MHILL**  
 IN ASSOCIATION WITH  
**PARSONS & INCA**  
 ENGINEERS INC.

Submitted: \_\_\_\_\_ Date: \_\_\_\_\_

**IBI GROUP**

Approved: \_\_\_\_\_ Date: \_\_\_\_\_

**SOUNDTRANSIT**

Date: \_\_\_\_\_

Scale: 1"=20'  
 Filename: ELD\OVNA\_AE01.dwg  
 Contract No.: EL\_SEG\_D  
 Date: \_\_\_\_\_

**EAST LINK PROJECT  
 SEGMENT D**

OVERLAKE VILLAGE STATION  
 AT-GRADE STATION  
 ELEVATION, SECTION



Drawing No.: **OVNA-AE01**  
 Sheet No.: \_\_\_\_\_ Rev.: \_\_\_\_\_  
**D-91**