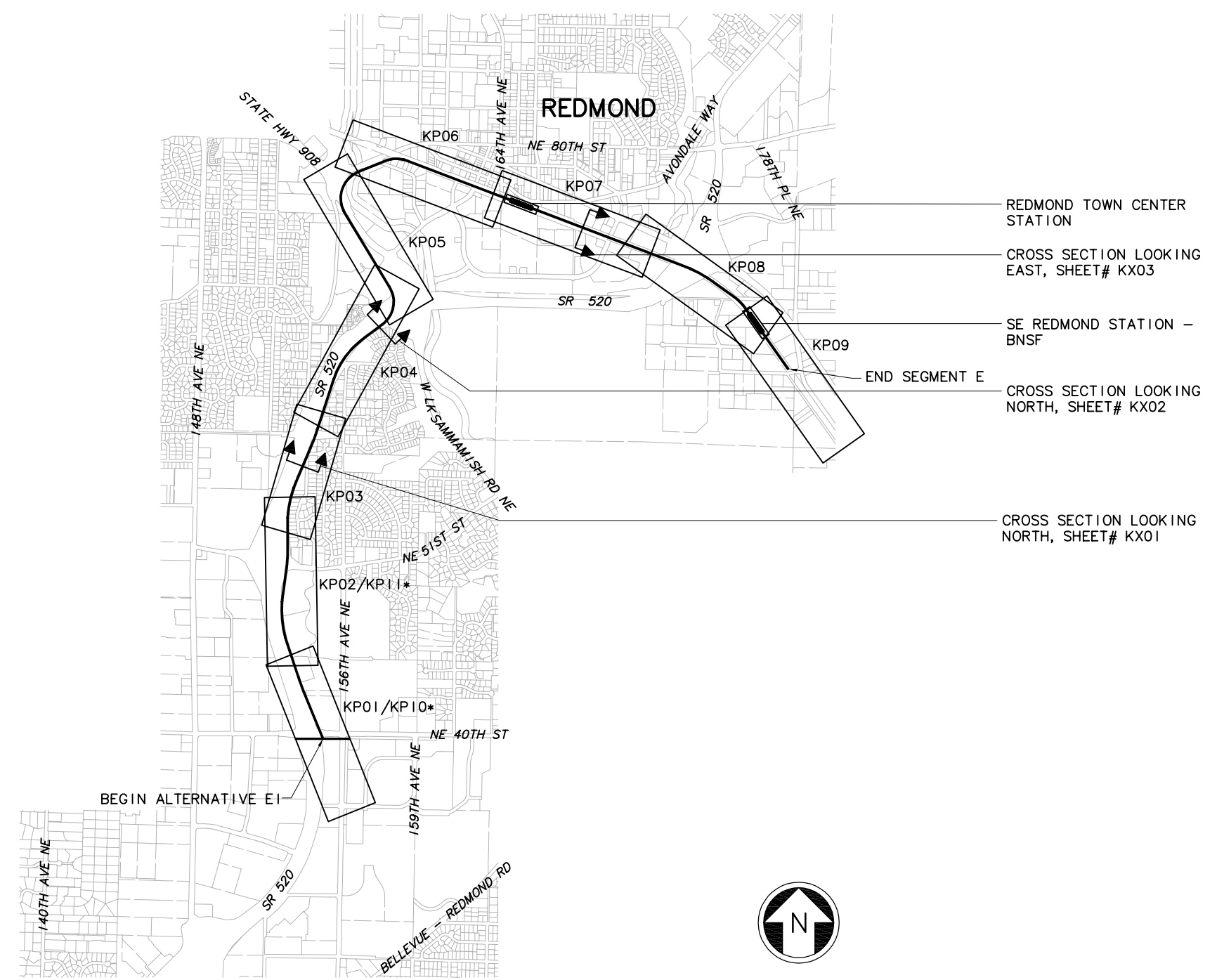


XREF'S
 Resolved
 ELEM1_KA
 REG-DCON
 ZG-2234H
 x1437rx
 x1737rx
 x1740rx
 x1743rx
 x1746rx
 x1749rx
 x2037rx
 x2040rx
 x2043rx
 x2046rx
 x2049rx
 x2052rx
 x2346rx
 x2349rx
 x2352rx
 x2646rx
 x2649rx
 x2652rx
 Unresolved
 key_East
 LTSCALE
 1=1



REDMOND TOWN CENTER STATION
 CROSS SECTION LOOKING EAST, SHEET# KX03
 SE REDMOND STATION - BNSF
 END SEGMENT E
 CROSS SECTION LOOKING NORTH, SHEET# KX02
 CROSS SECTION LOOKING NORTH, SHEET# KX01

* NOTE: KP10 AND KP11 REPRESENT INTERIM TERMINUS AT THE OVERLAKE TRANSIT CENTER IN SEGMENT D.

c:\work\ELE1E1_GZ05.dwg
 10/16/08 11:13 : eackerm OE5396

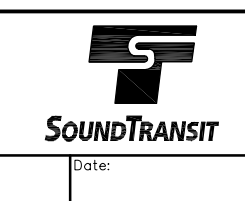
No.	Date	Dsn.	Chk.	App.	Revisions

Designed By:
 Drawn By:
 Checked By:
 Approved By:

**FEIS
 CONCEPTUAL**

CH2MHILL
 IN ASSOCIATION WITH
PARSONS & INCA
 ENGINEERS INC.

Submitted: Date:
 Approved: Date:



Scale: NTS
 Filename: ELE1E1_GZ05.dwg
 Contract No.: EL_SEG_E
 Date:

**EAST LINK PROJECT
 SEGMENT E
 ALTERNATIVE E1**

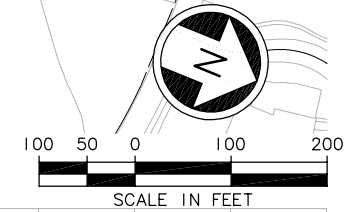
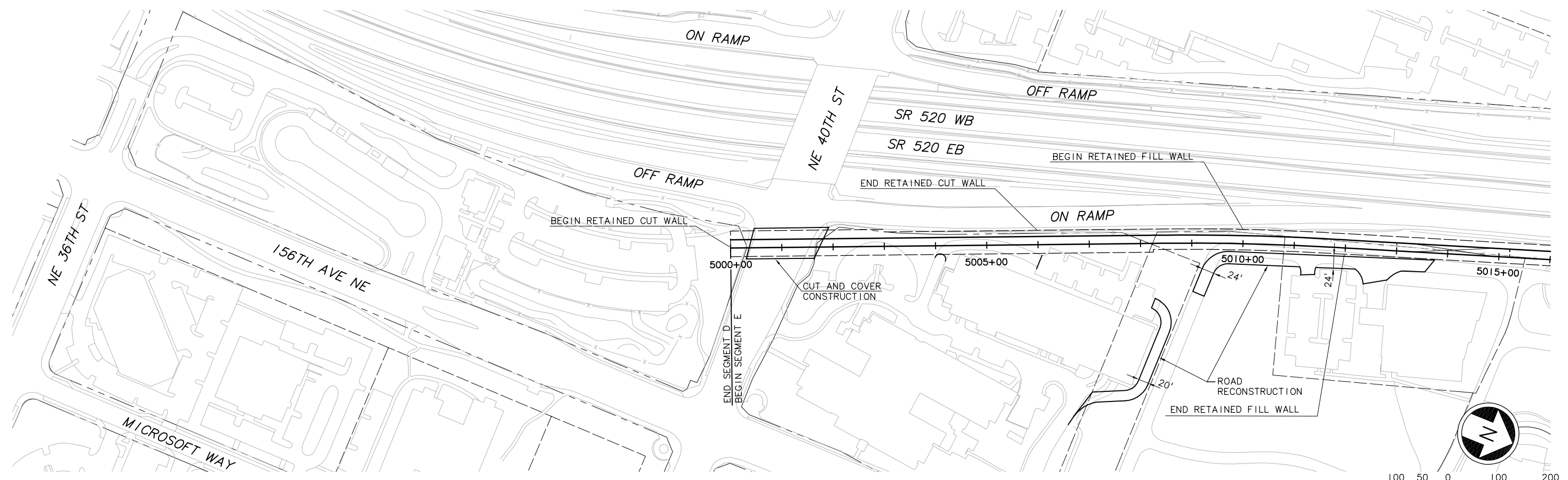
KEY PLAN

Drawing No.: E1-GZ05
 Sheet No.: Rev.:
E-28

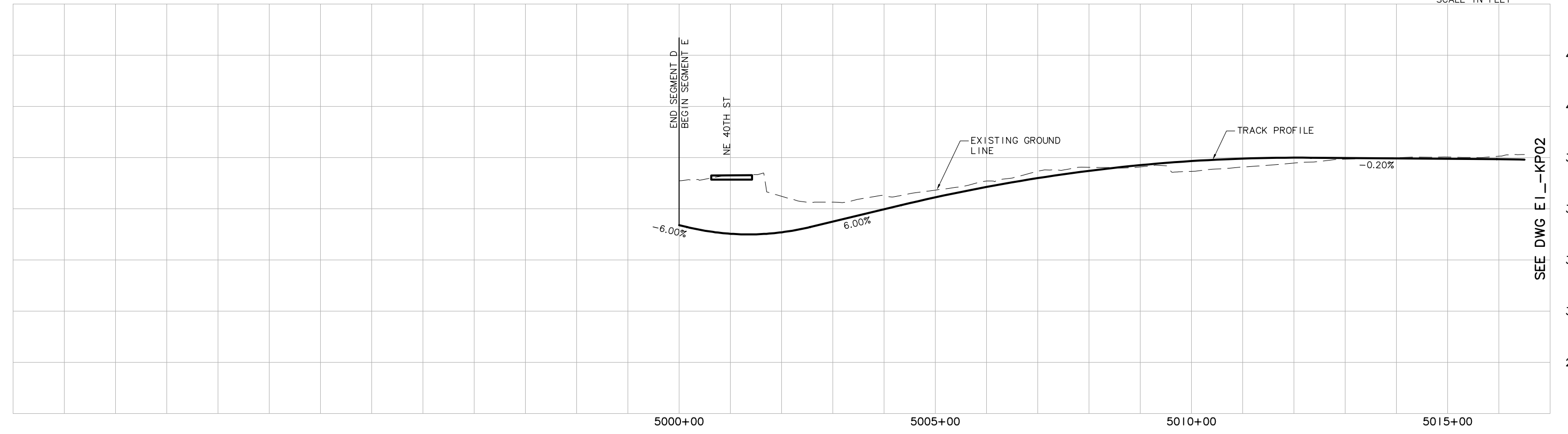
XREF'S
 Resolved
 ELE_EI__CM
 ELE_EI__JO
 ELE_EI__KA
 REG-DCON
 ZG-2234H
 ZG-G10010
 x1740rf
 x2040rf
 x2040sf
 Unresolved
 key_East
 key_Segment

LTSCALE
 1=1

1
 2
 3
 4
 5



SEE DWG EI__KP02



SEE DWG EI__KP02

c:\work\ELEIEI__KP01.dwg
 10/16/08 11:13: eackerm OE5396

					Designed By:
					Drawn By:
					Checked By:
					Approved By:
No.	Date	Dsn.	Chk.	App.	Revisions

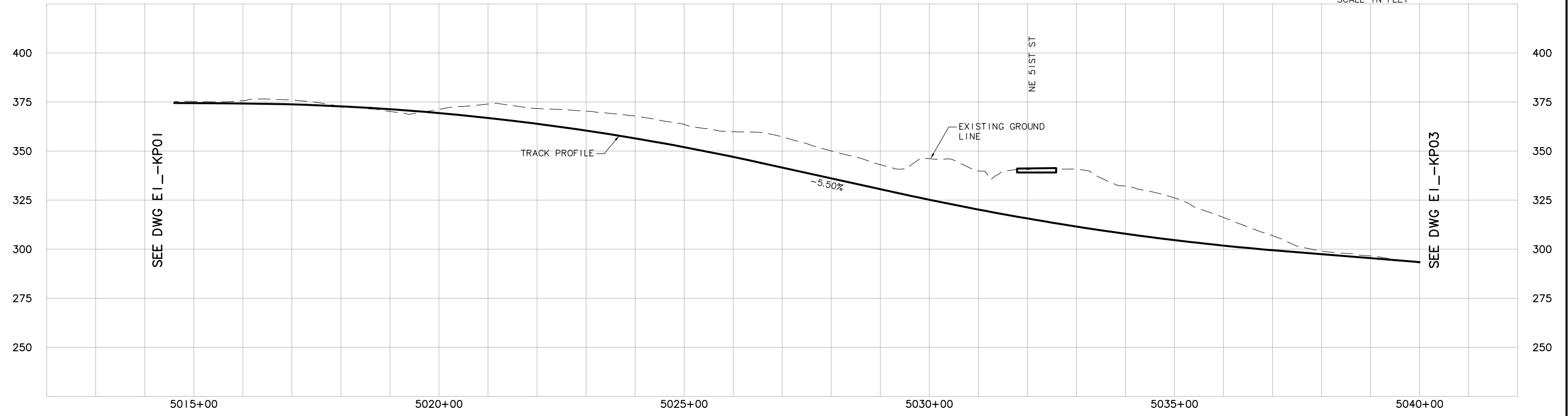
FEIS CONCEPTUAL	CH2MHILL IN ASSOCIATION WITH PARSONS & INCA ENGINEERS INC.	Grijalva Engineering, L.L.C.		Scale: H: 1"=100'; V: 1"=25' Filename: ELEIEI__KP01.dwg Contract No.: EL_SEG_E	EAST LINK PROJECT SEGMENT E ALTERNATIVE E I TRACK PLAN & PROFILE		Drawing No.: EI__KP01 Sheet No.: E-29
	Submitted:	Date:	Approved:	Date:	Date:	Rev.:	

XREF'S
 Resolved
 ELEM1_CM
 ELEM1_Q
 ELEM1_KA
 REG-DCON
 ZG-2234H
 ZG-G10010
 x1740rx
 x1740sf
 x1743rx
 x1743sf
 Unresolved
 key_East
 key_Segment

LTSCALE
 1=1

SEE DWG EI_-KP01

SEE DWG EI_-KP03



SEE DWG EI_-KP01

SEE DWG EI_-KP03

c:\work\EL\EI_-KP02.dwg
 10/16/08 11:14 : eackerm OE5396

No.	Date	Dsn.	Chk.	App.	Revisions

Designed By:
 Drawn By:
 Checked By:
 Approved By:

**FEIS
 CONCEPTUAL**

CH2MHILL
 IN ASSOCIATION WITH
PARSONS & INCA
 ENGINEERS INC.

Grijalva
 Engineering, L.L.C.

SOUNDTRANSIT

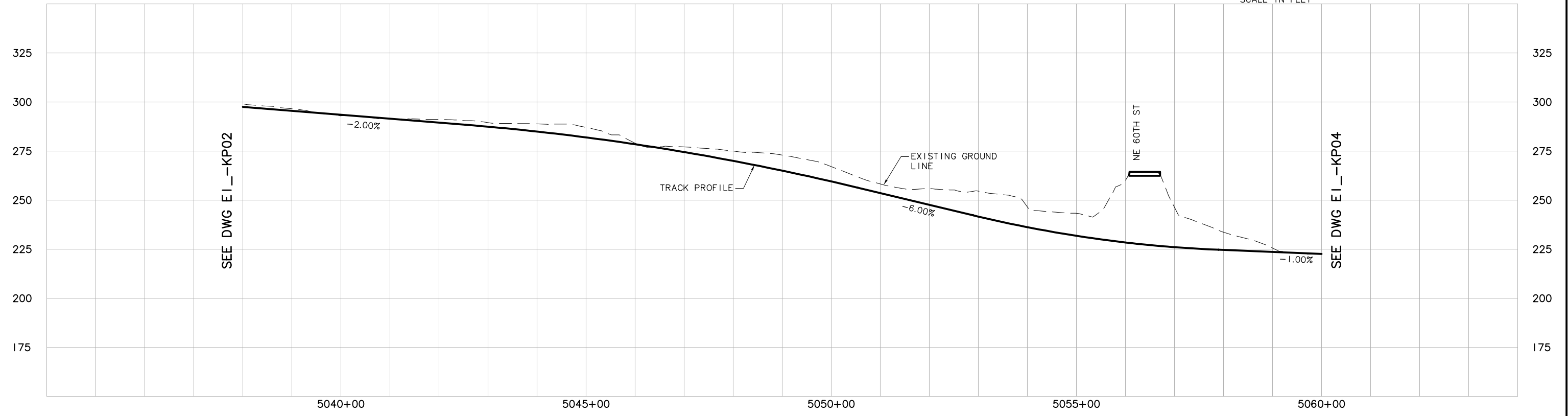
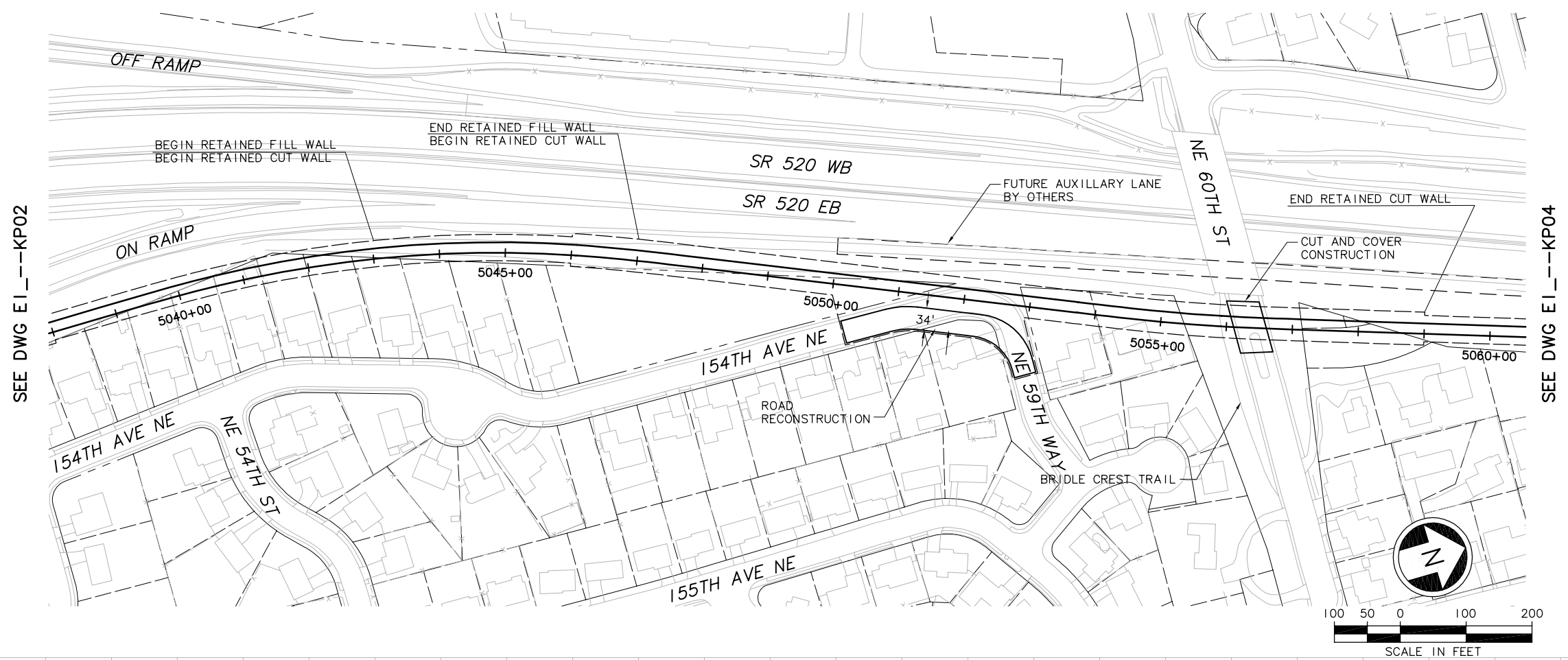
Scale:
 H: 1"=100'; V: 1"=25'
 Filename:
 ELEM1_-KP02.dwg
 Contract No.:
 EL_SEG_E

**EAST LINK PROJECT
 SEGMENT E
 ALTERNATIVE EI
 TRACK PLAN & PROFILE**

THIS PRINT RELEASED
 HALF SCALE

Drawing No.: EI_-KP02
 Sheet No.:
 Rev.:
E-30

XREF'S
 Resolved
 ELEM1_CM
 ELEM1_QD
 ELEM1_KA
 REG-DCON
 ZG-2234H
 ZG-G10010
 x1743rx
 x1746rx
 x1746sf
 x2046rx
 x2046sf
 Unresolved
 key_East
 key_Segment
 LTSCALE
 1=1

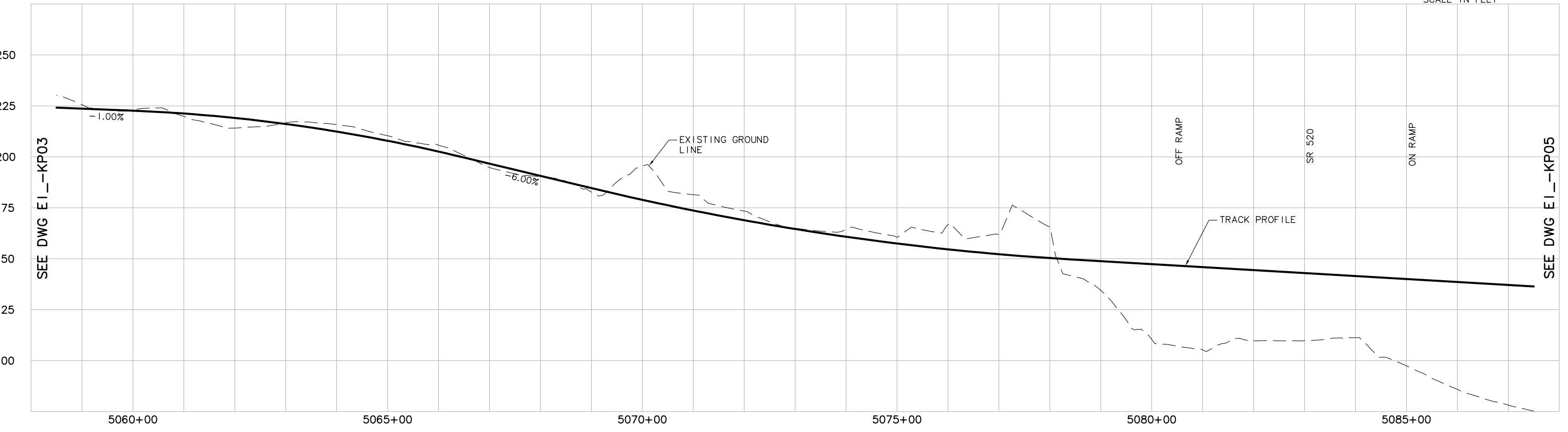
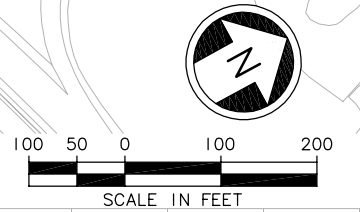


c:\work\EL\EI--KP03.dwg
 10/16/08 11:14 : eackerm OE5396

					Designed By:
					Drawn By:
					Checked By:
					Approved By:
No.	Date	Dsn.	Chk.	App.	Revisions

FEIS CONCEPTUAL	CH2MHILL <small>IN ASSOCIATION WITH</small> PARSONS & INCA <small>ENGINEERS INC.</small>	Grijalva Engineering, L.L.C.		Scale: H: 1"=100'; V: 1"=25' Filename: ELEIEI--KP03.dwg Contract No.: EL_SEG_E	EAST LINK PROJECT SEGMENT E ALTERNATIVE EI TRACK PLAN & PROFILE	Drawing No.: EI--KP03 Sheet No.: E-31
	Submitted:	Date:	Approved:	Date:		Rev.:

XREF'S
 Resolved
 ELE_EI_CM
 ELE_EI_QD
 ELE_EI_KA
 REG-DCON
 ZG-2234H
 ZG-G10010
 x1746sf
 x2046sf
 x2046sf
 x2049sf
 x2049sf
 Unresolved
 key_East
 key_Segment
 LTSCALE
 1=1



c:\work\ELEIEI_KP04.dwg
 10/16/08 11:14 : eackerm OE5396

Designed By:					
Drawn By:					
Checked By:					
Approved By:					
No.	Date	Dsn.	Chk.	App.	Revisions

FEIS
 CONCEPTUAL

CH2MHILL
 IN ASSOCIATION WITH
PARSONS & INCA
 ENGINEERS INC.

Grijalva
 Engineering, L.L.C.

SOUNDTRANSIT

Scale:
 H: 1"=100'; V: 1"=25'
 Filename:
 ELEIEI_KP04.dwg
 Contract No.:
 EL_SEG_E

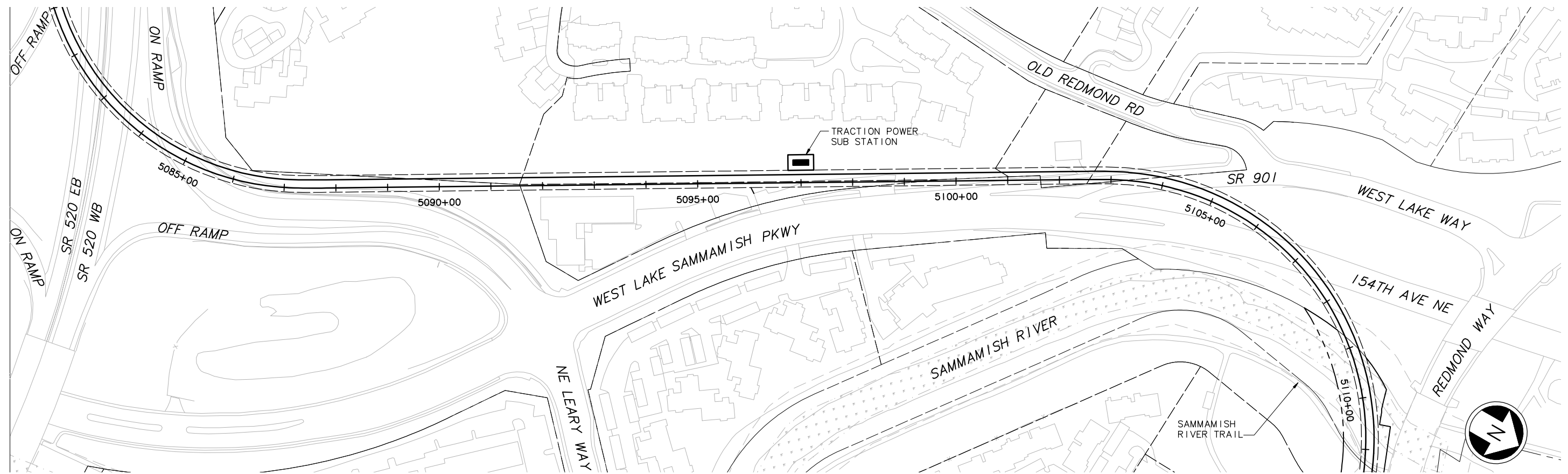
EAST LINK PROJECT
 SEGMENT E
 ALTERNATIVE E1
 TRACK PLAN & PROFILE

THIS PRINT RELEASED
 HALF SCALE

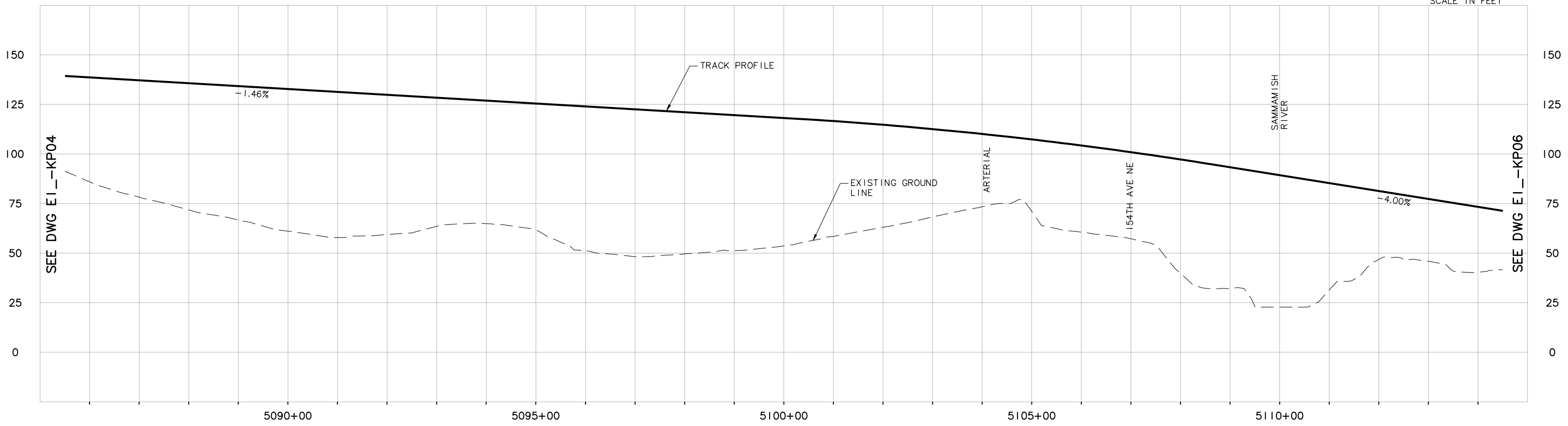
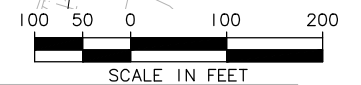
Drawing No.:
 EI_KP04
 Sheet No.:
 Rev.:
 E-32

SEE DWG EI_-KP04

DWG_INFO:
 L1SCALE:
 1=1
 XREFs:
 -Attach:
 -Overlay:
 ELE_EI_-CM
 ELE_EI_-JO
 ELE_EI_-KA
 ZG-2234H
 ZG-G10010
 x1749r
 x1749s
 x2046r
 x2046s
 x2049r
 x2049s
 -Unresolved:
 key_East
 key_Segment



SEE DWG EI_-KP06



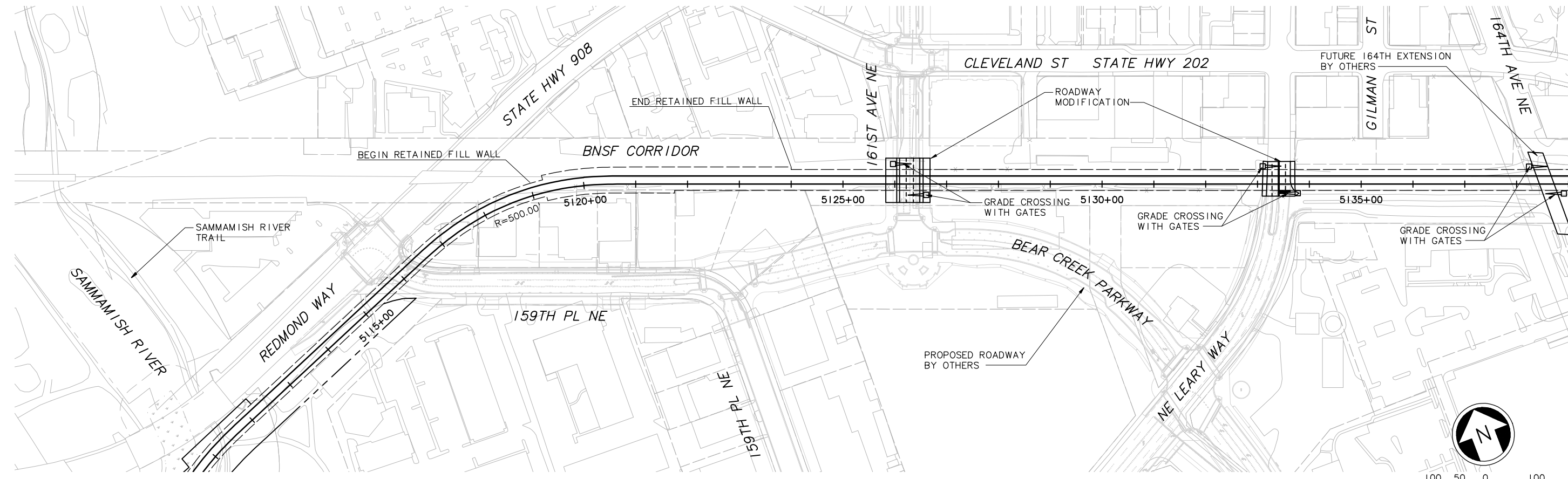
c:\work\feis\segment_e\ELE_EI_-KP05.dwg
 06/14/11 15:25 : khuum 066585

No.	Date	Dsn.	Chk.	App.	Revisions

Designed By:	
Drawn By:	
Checked By:	
Approved By:	

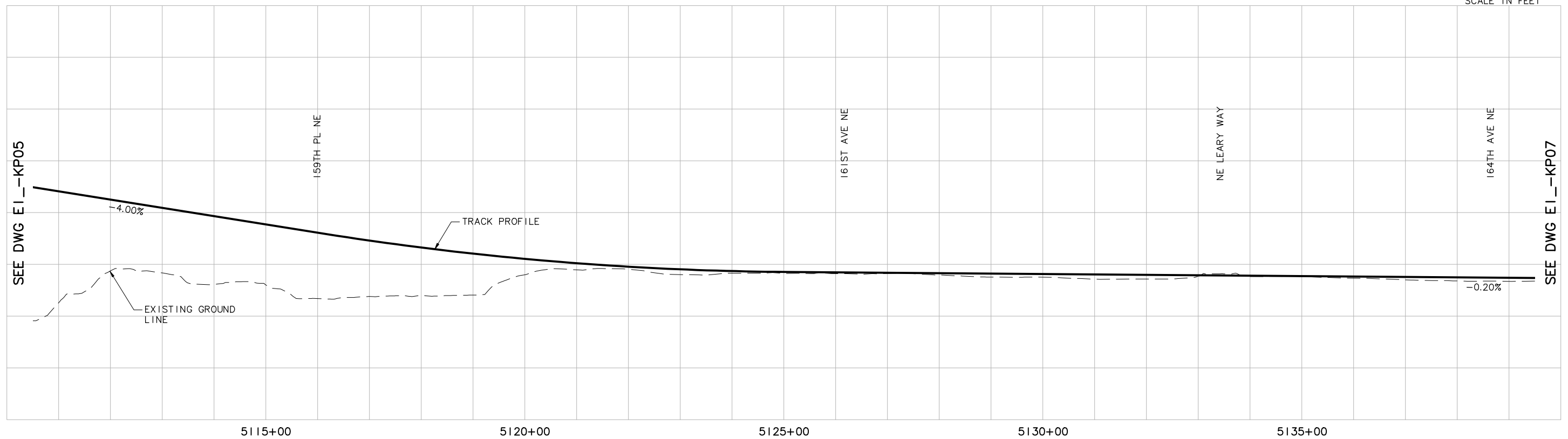
FEIS CONCEPTUAL	 IN ASSOCIATION WITH 	Grijalva Engineering, L.L.C.		Scale: H: 1"=100'; V: 1"=25' Filename: ELE_EI_-KP05.dwg Contract No.: EL_SEG_E	EAST LINK PROJECT SEGMENT E ALTERNATIVE E1 TRACK PLAN & PROFILE	Drawing No.: EI_-KP05 Sheet No.: E-33
	Submitted:	Date:	Approved:	Date:		Rev.:

DWG. INFO:
 L1SCALE:
 1"=1'
 XREFs:
 -Attach:
 -Overlay:
 ELE_EI_KP05
 ELE_EI_KP06
 ELE_EI_KP07
 ZG-2234H
 ZG-G10010
 x2049r
 x2049s
 x2052r
 x2052s
 x2349r
 x2349s
 -Unresolved:



SEE DWG EI_-KP05

SEE DWG EI_-KP07



c:\work\feis\segment_e\ELE_EI_KP06.dwg
 06/14/11 11:43 : khuum 0E6585

No.	Date	Dsn.	Chk.	App.	Revisions

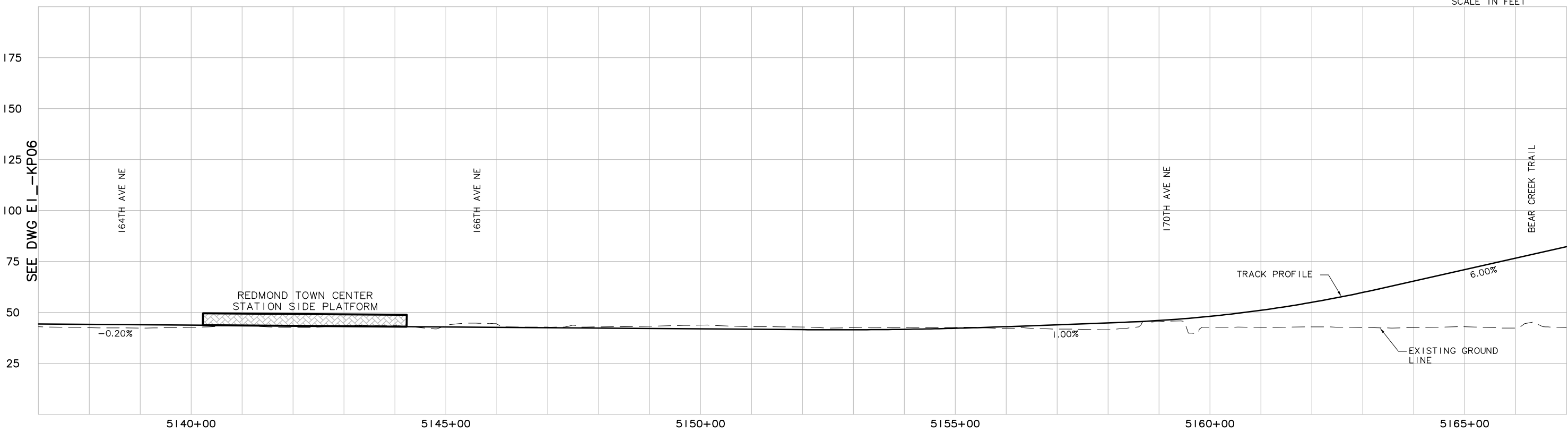
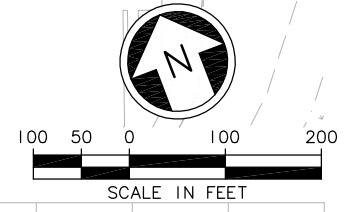
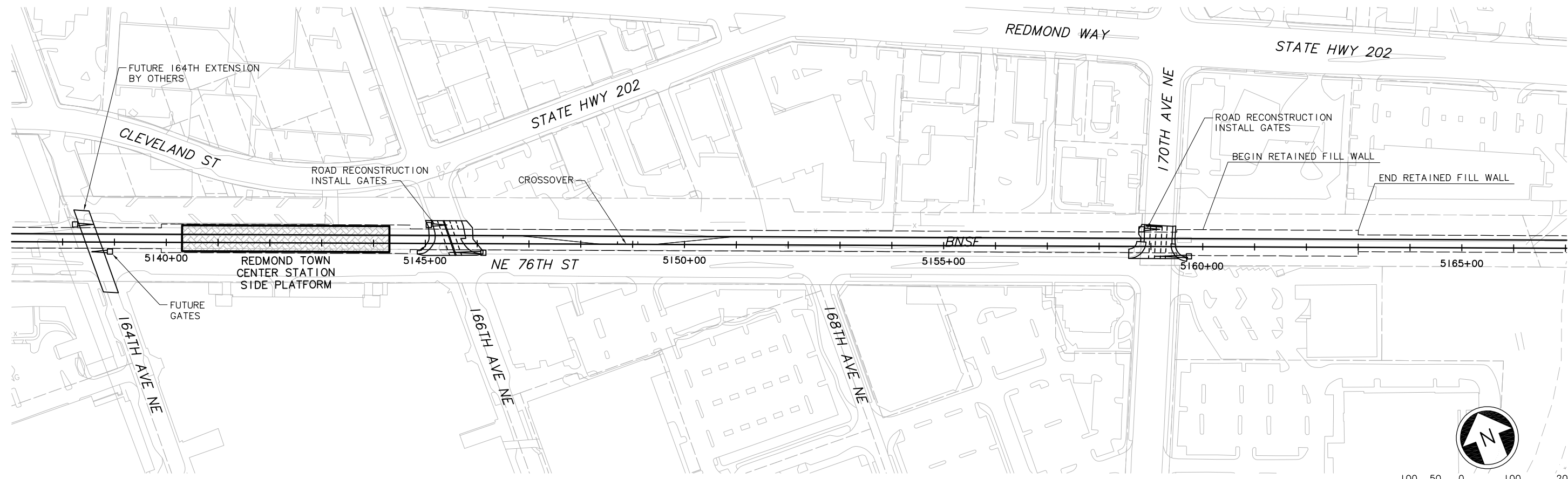
Designed By:	
Drawn By:	
Checked By:	
Approved By:	

FEIS CONCEPTUAL	 IN ASSOCIATION WITH 	Grijalva Engineering, L.L.C.		Scale: H: 1"=100'; V: 1"=25' Filename: ELE_EI_KP06.dwg Contract No.: EL_SEG_E	EAST LINK PROJECT SEGMENT E ALTERNATIVE E1 TRACK PLAN & PROFILE	Drawing No.: EI_-KP06 Sheet No.: E-34 Rev.:
	Submitted:	Date:	Approved:	Date:		

DWG INFO:
 L1SCALE:
 1=1
 XREFS:
 -Attach:
 -Overlay:
 ELE_EI_KP07.dwg
 ELE_EI_KP08.dwg
 ELE_EI_KP09.dwg
 ZG-2234H
 ZG-010010
 x2049rx
 x2049rf
 x2349rx
 x2349rf
 -Unresolved:
 key_Eost
 key_Segment

SEE DWG EI_KP06

SEE DWG EI_KP08



c:\work\feis\ele_ei_kp07.dwg
 02/11/11 15:08 : bolimaf OE6579

No.	Date	Dsn.	Chk.	App.	Revisions				

Designed By:
 Drawn By:
 Checked By:
 Approved By:

**FEIS
 CONCEPTUAL**

CH2MHILL
 IN ASSOCIATION WITH
PARSONS & INCA
 ENGINEERS INC.

Grijalva
 Engineering, L.L.C.

SOUNDTRANSIT

Scale:
 H: 1"=100'; V: 1"=25'
 Filename:
 ELE_EI_KP07.dwg
 Contract No.:
 Date:
 07/30/10

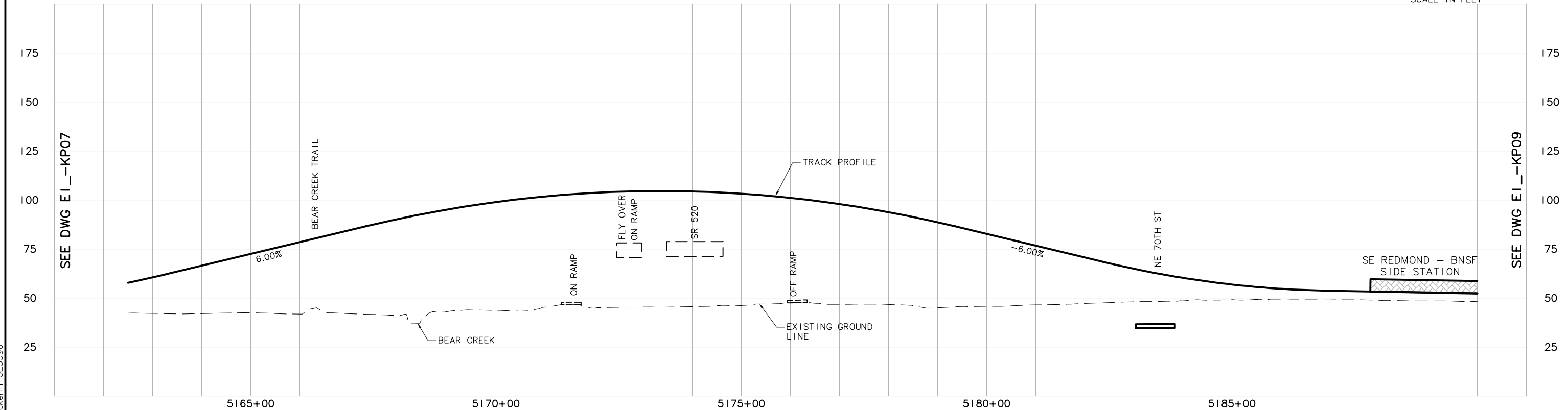
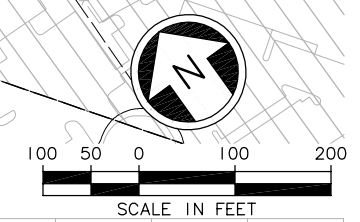
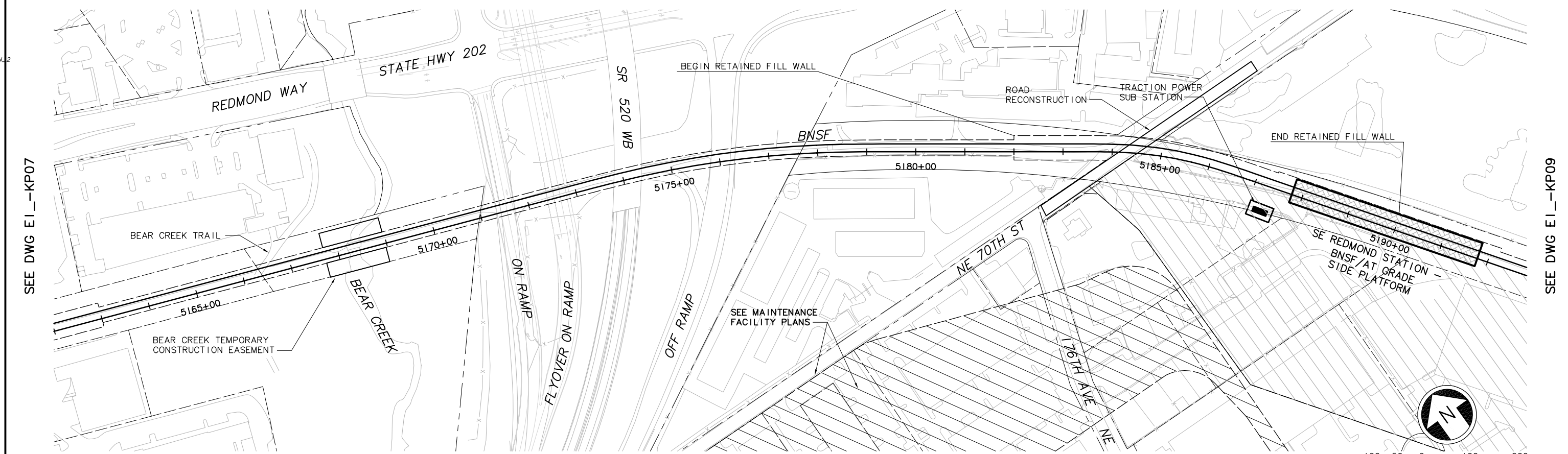


**LINK LIGHT RAIL PROJECT
 EAST CORRIDOR
 SEGMENT E
 ALTERNATIVE EI
 TRACK PLAN & PROFILE**

Drawing No.:
EI_KP07
 Sheet No.:
E-35
 Rev.:

XREF'S
 Resolved
 ELE_520_PLAN_2
 ELE_EI_CM
 ELE_EI_JO
 ELE_EI_KA
 REG-DCON
 ZG-2234H
 ZG-G10010
 x2349rx
 x2349sf
 x2646rx
 x2646sf
 x2649rx
 x2649sf
 Unresolved
 ELE_EI_MF
 key_East
 key_Segment

L7SCALE
 1"=1'

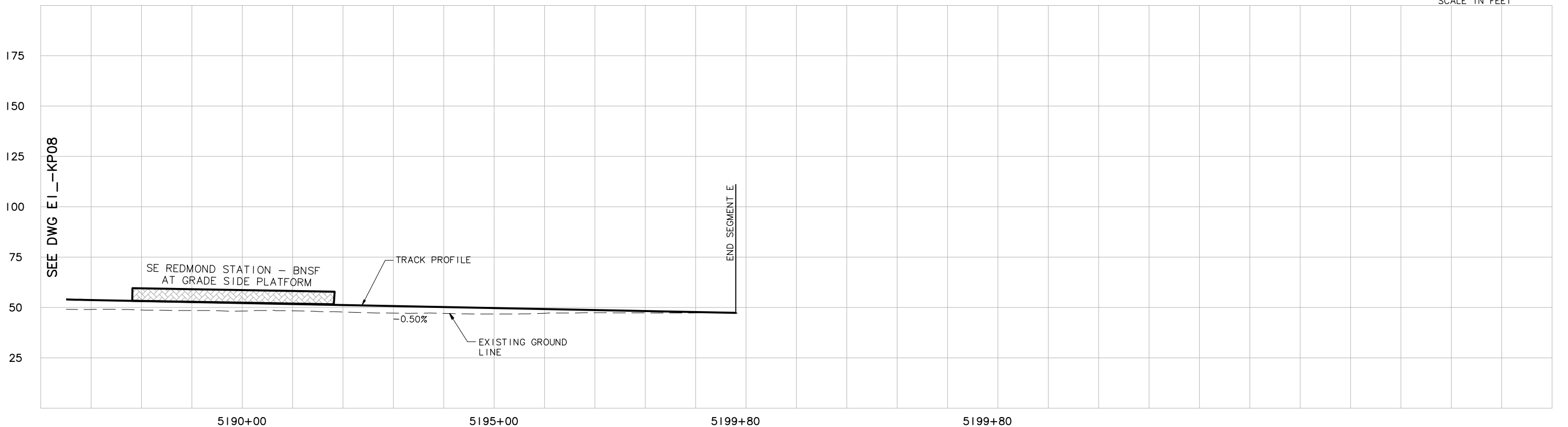
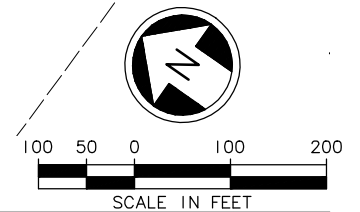
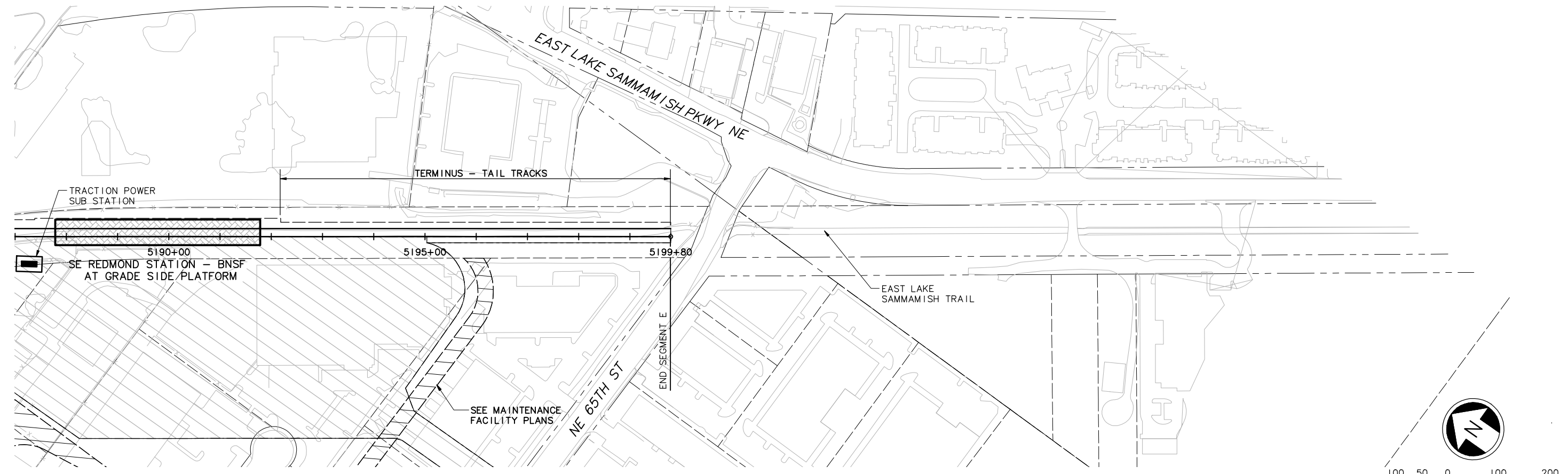


c:\work\ELE\EI\KP08.dwg
 10/16/08 11:16 : eackerm OE5396

Designed By:		FEIS CONCEPTUAL	 CH2MHILL IN ASSOCIATION WITH PARSONS & INCA ENGINEERS INC.		Grijalva Engineering, L.L.C.		 SOUNDTRANSIT		Scale: H: 1"=100'; V: 1"=25' Filename: ELE\EI\KP08.dwg Contract No.: EL_SEG_E		EAST LINK PROJECT SEGMENT E ALTERNATIVE EI TRACK PLAN & PROFILE		Drawing No.: EI--KP08					
Drawn By:									Submitted:		Date:		Date:		Sheet No.:		Rev.:	
Checked By:									Date:		Approved:		Date:		Date:		E-36	
Approved By:									Date:		Approved:		Date:		Date:			
No.	Date	Dsn.	Chk.	App.	Revisions													

DWG. INFO:
 LTSCALE:
 1=1
 XREFs:
 -Attach:
 -Overlay:
 ELE_EI_CM
 ELE_EI_JO
 ELE_EI_KA
 ELE_EI_MF
 ZG-2234H
 ZG-G10010
 x2646rx
 x2646sf
 x2649rx
 x2649sf
 -Unresolved:
 key_East
 key_Segment

SEE DWG EI_KP08



c:\work\feis\segment_e\ELE_EI_KP09.dwg
 06/14/11 15:56 : khuum 0E6585

Designed By:	
Drawn By:	
Checked By:	
Approved By:	

FEIS CONCEPTUAL

CH2MHILL
 IN ASSOCIATION WITH
PARSONS & INCA
 ENGINEERS INC.

Grijalva
 Engineering, L.L.C.

SOUNDTRANSIT

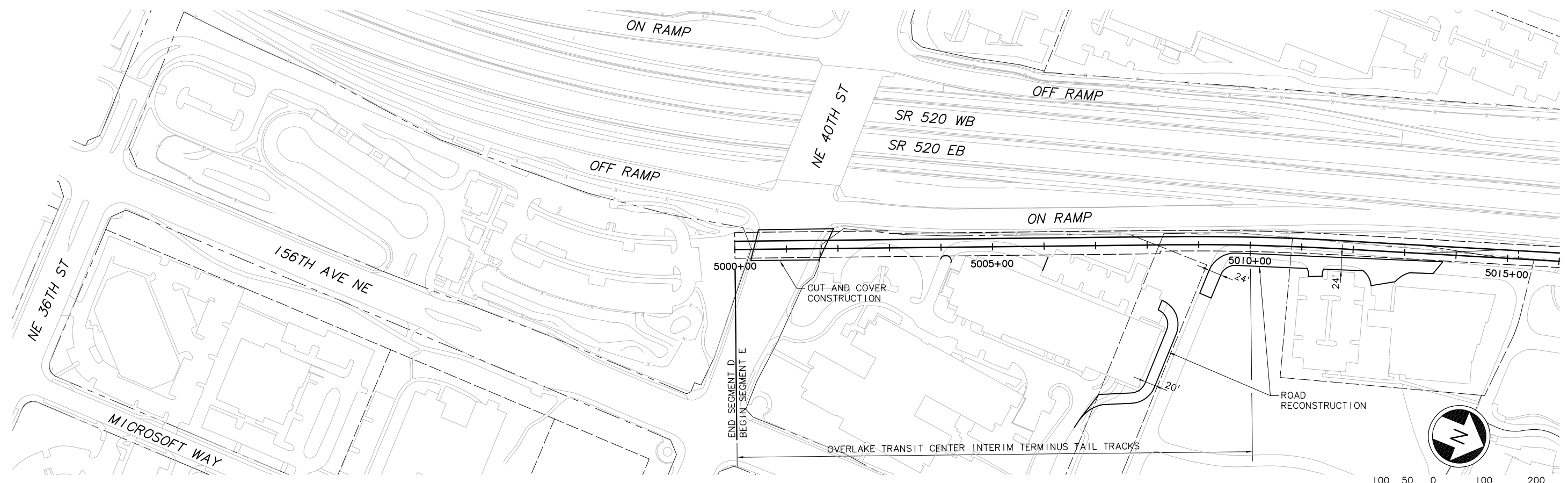
Scale: H: 1"=100'; V: 1"=25'
Filename: ELE_EI_KP09.dwg
Contract No.: EL_SEG_E
Date:



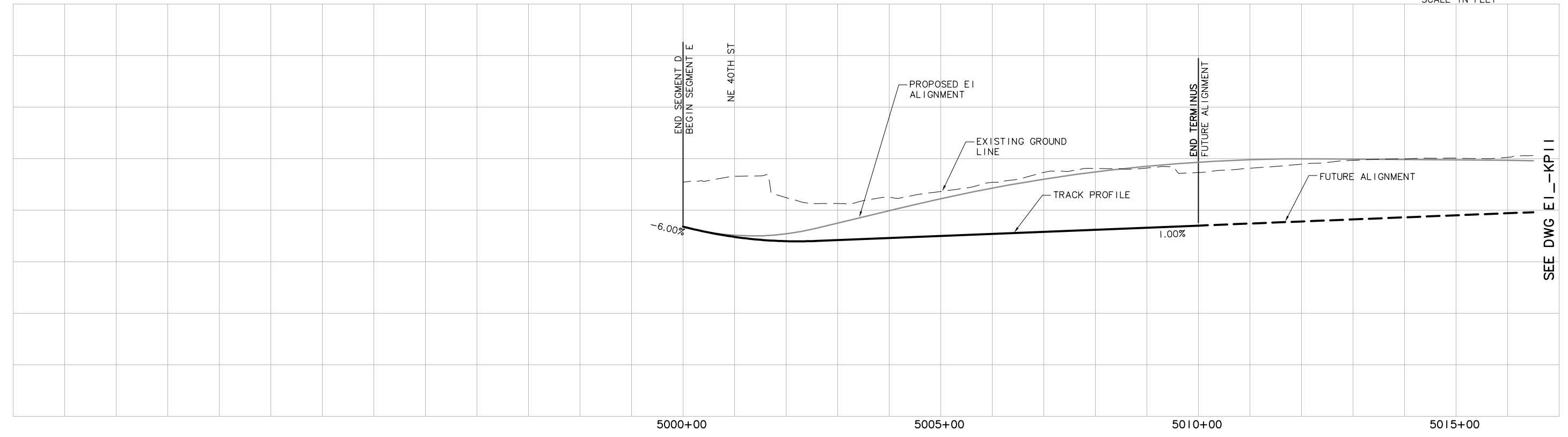
EAST LINK PROJECT
 SEGMENT E
 ALTERNATIVE E1
 TRACK PLAN & PROFILE

Drawing No.:	EI_KP09
Sheet No.:	E-37
Rev.:	

XREF'S
 Resolved
 ELEM1_CM
 ELEM1_QD
 ELEM1_KA
 ELEM1_KA
 REG-DCON
 ZG-2234H
 ZG-G10010
 x1740rx
 x1740sf
 x2040rx
 x2040sf
 Unresolved
 key_East
 key_Segment
 LTSCALE
 1=1



SEE DWG EI_-KP11



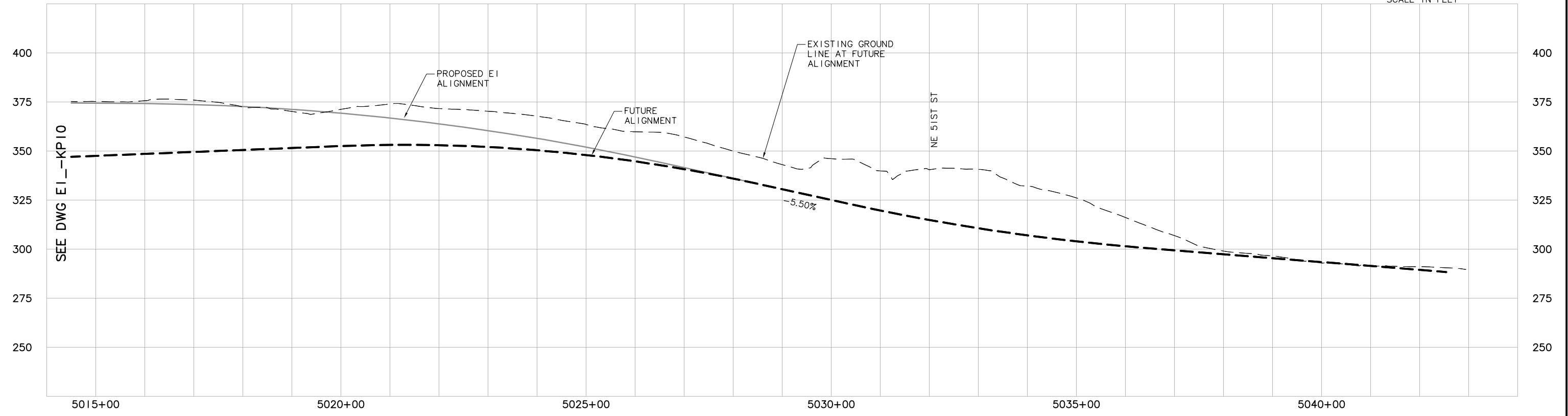
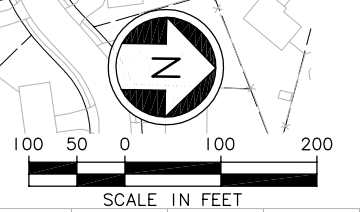
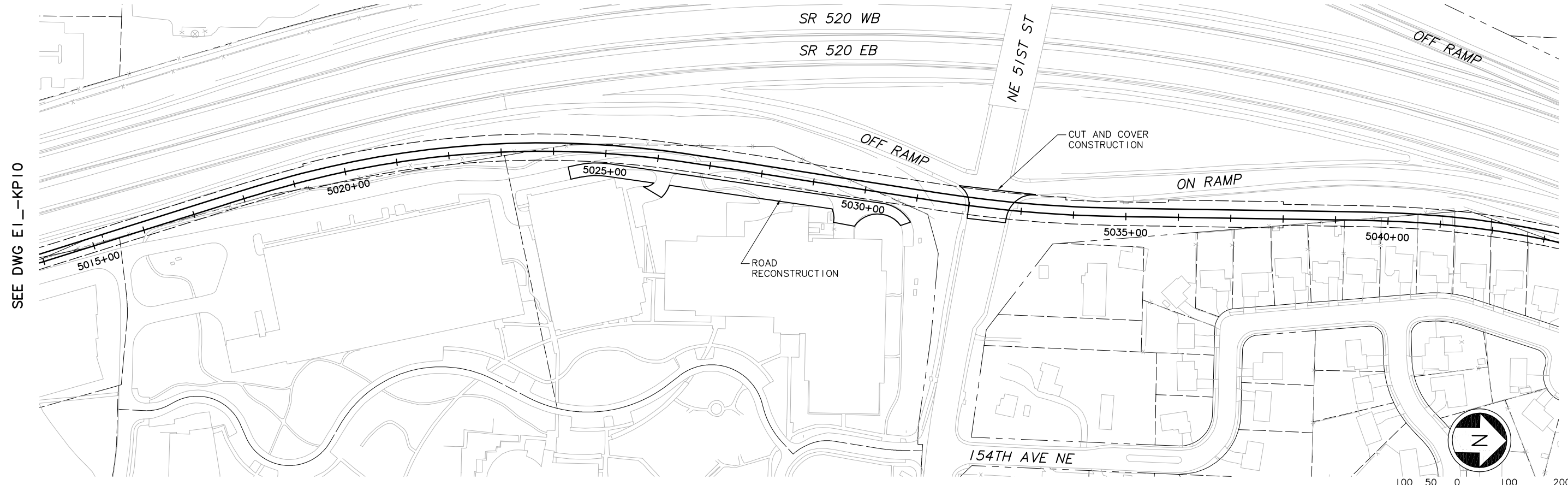
SEE DWG EI_-KP11

c:\work\EL\EI_-KP10.dwg
 10/16/08 11:17 : eackerm OE5396

No.	Date	Dsn.	Chk.	App.	Revisions

FEIS CONCEPTUAL	Designed By:	CH2MHILL IN ASSOCIATION WITH PARSONS & INCA ENGINEERS INC.	Grijalva Engineering, L.L.C.		Scale: 1" = 100'	EAST LINK PROJECT SEGMENT E ALTERNATIVE E1 TRACK PLAN & PROFILE INTERIM TERMINUS		Drawing No.:
	Drawn By:				Contract No.:			EI_-KP10
	Checked By:				Submitted:			Sheet No.:
Approved By:	Date:	Approved:	Date:	Date:	Rev.:	E-38		

XREF'S
 Received
 ELE_EI_KM
 ELE_EI_KO
 ELE_EI_KA
 ELE_EX_KA
 REG-DOON
 Z0-2234H
 Z0-G10010
 x1740r
 x1740f
 x1743r
 x1743f
Unresolved
 key_East
 key_Segment
L7SCALE
 1"=1'



c:\work\ELE\EI_KP11.dwg
 10/16/08 11:17 : eackerm OE5396

No.	Date	Dsn.	Chk.	App.	Revisions

Designed By:	
Drawn By:	
Checked By:	
Approved By:	

FEIS
 CONCEPTUAL

CH2MHILL
IN ASSOCIATION WITH
PARSONS & INCA
ENGINEERS INC.

Grijalva
 Engineering, L.L.C.

Scale:	1" = 100'
Filename:	ELE\EI_KP11.dwg
Contract No.:	EL_SEG_E
Date:	

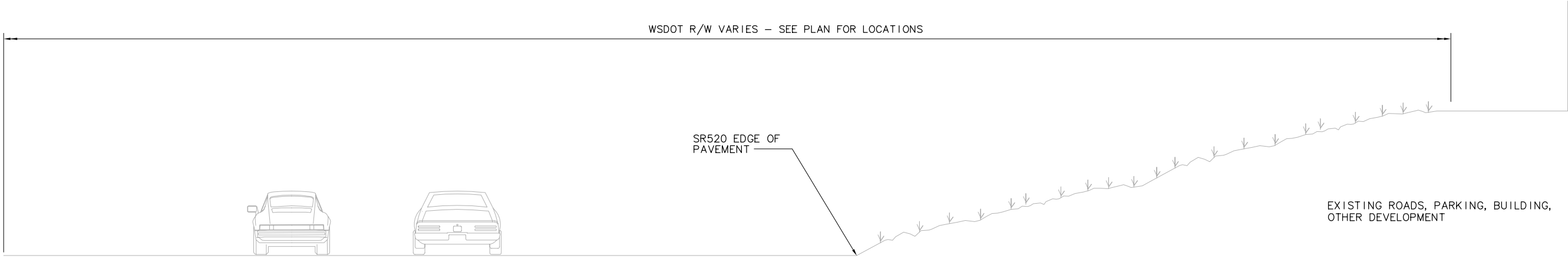
EAST LINK PROJECT
SEGMENT E
 ALTERNATIVE E1
 TRACK PLAN & PROFILE
 INTERIM TERMINUS

Drawing No.: **EI_KP11**

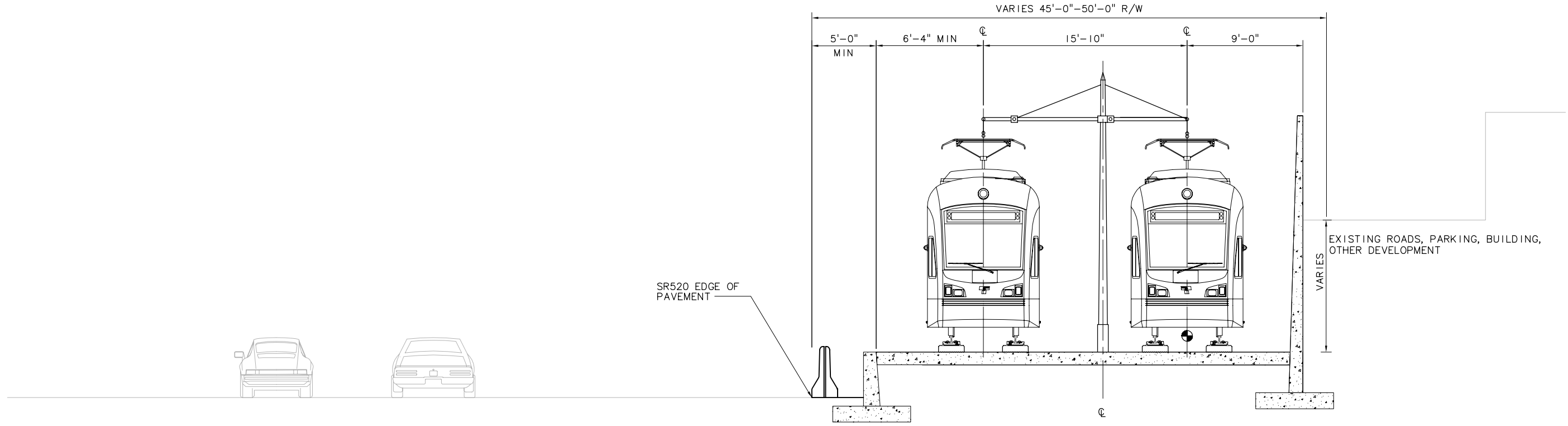
Sheet No.: _____ Rev.: _____

E-39

XREF'S
 Resolved
 REG-DCON
 20-2234H
 Unresolved
 LTSCALE
 1=1



**EXISTING TYPICAL SECTION, SR520 EB
 BETWEEN NE 40TH ST & NE 51ST ST**
 SCALE: NOT TO SCALE



**TYPICAL SECTION-FUTURE CONDITIONS
 ROADWAY SR520 BETWEEN NE 40TH & NE 51ST ST
 TYPICAL OF ALTERNATIVES: E1, E2, E4**
 SCALE: NOT TO SCALE

LIMITS
 EB TRACK STA 5022+00 TO 5039+00
 EB TRACK STA 5043+00 TO 5047+00
 EB TRACK STA 5063+00 TO 5078+00

c:\work\EL\E1\KX01.dwg
 10/16/08 11:17 : eackerm OE5396

No.	Date	Dsn.	Chk.	App.	Revisions

Designed By:
 Drawn By:
 Checked By:
 Approved By:

**FEIS
 CONCEPTUAL**

CH2MHILL
 IN ASSOCIATION WITH
PARSONS & INCA
 ENGINEERS INC.

Grijalva
 Engineering, L.L.C.

SOUNDTRANSIT

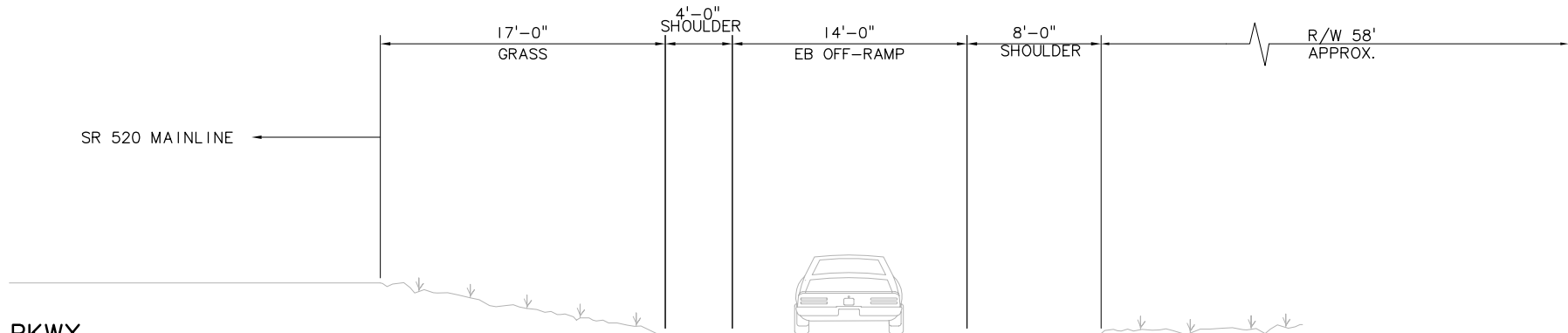
Scale: NTS
 Filename: ELE1E1_KX01.dwg
 Contract No.: EL_SEG_E

**EAST LINK PROJECT
 SEGMENT E
 ALTERNATIVE E1
 TYPICAL SECTION**

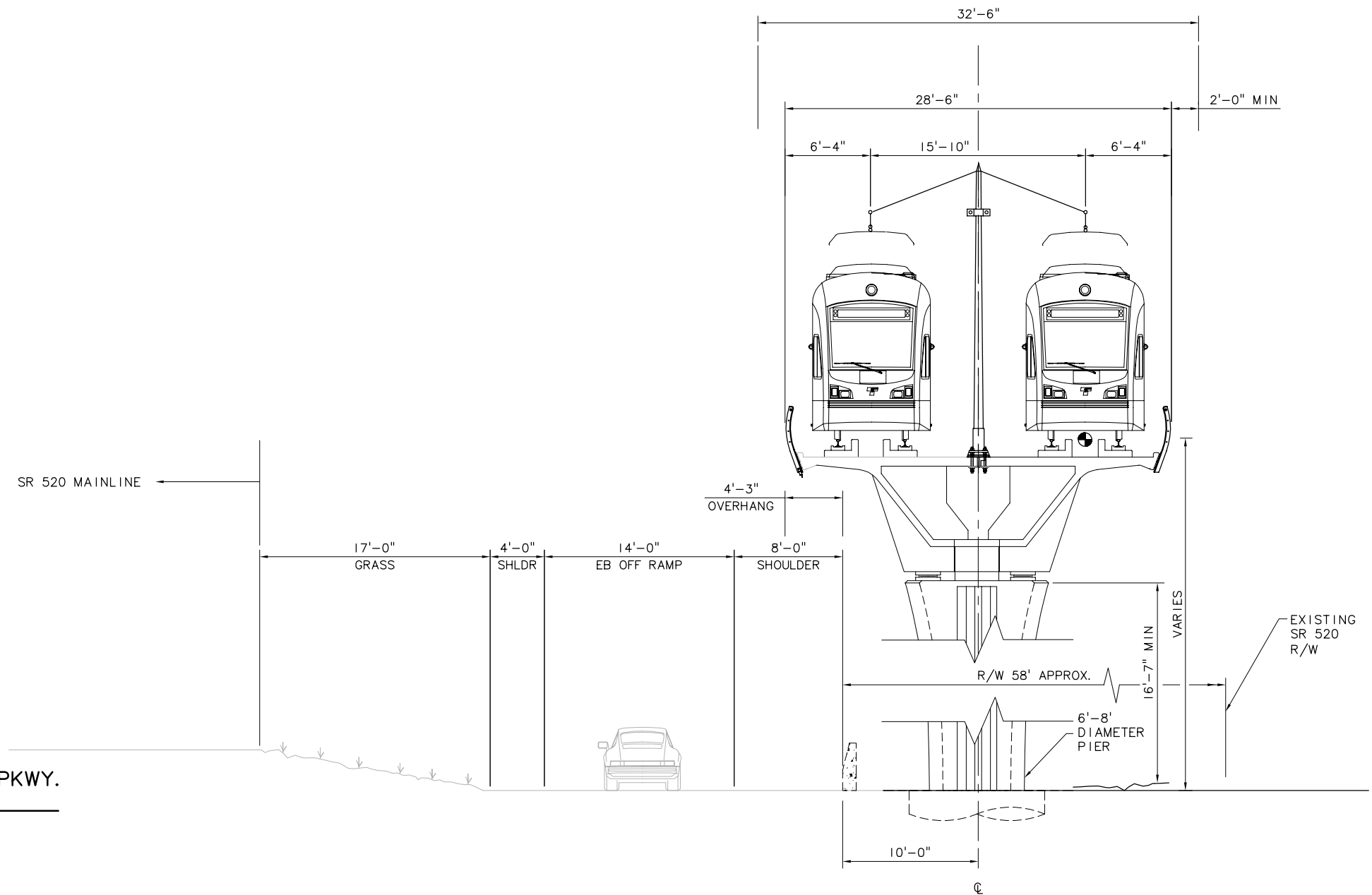
THIS PRINT RELEASED
 HALF SCALE

Drawing No.: E1-KX01
 Sheet No.:
 Rev.:
E-40

XREF'S
 Resolved
 REG-DCON
 20-2234H
 Unresolved
 LTSCALE
 1=1



SR520 NB, JUST SW OF W. LK. SAMMAMISH PKWY.
 TYPICAL SECTION, EXISTING CONDITIONS-
 SCALE: NOT TO SCALE



TYPICAL SECTION - FUTURE CONDITIONS
 ALONG SR520 EB, SW OF W. LK. SAMMAMISH PKWY.
 TYPICAL OF ALTERNATIVES: E1, E2, E4
 SCALE: NOT TO SCALE
 LIMITS APPROX
 STA 5078+00 TO STA 5081+00

c:\work\EL\E1\KX02.dwg
 10/16/08 11:18: eackerm OE5396

No.	Date	Dsn.	Chk.	App.	Revisions

Designed By:
 Drawn By:
 Checked By:
 Approved By:

FEIS
 CONCEPTUAL

CH2MHILL
 IN ASSOCIATION WITH
PARSONS & INCA
 ENGINEERS INC.

Grijalva
 Engineering, L.L.C.

SOUNDTRANSIT

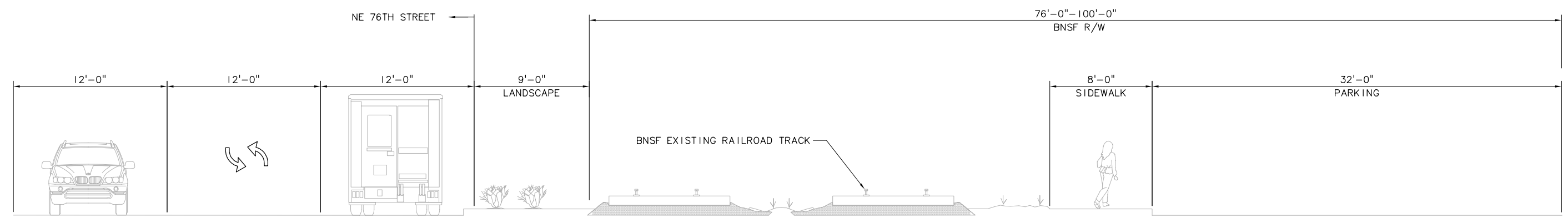
Scale: NTS
 Filename: ELE1E1_KX02.dwg
 Contract No.: EL_SEG_E

EAST LINK PROJECT
 SEGMENT E
 ALTERNATIVE E1
 TYPICAL SECTION

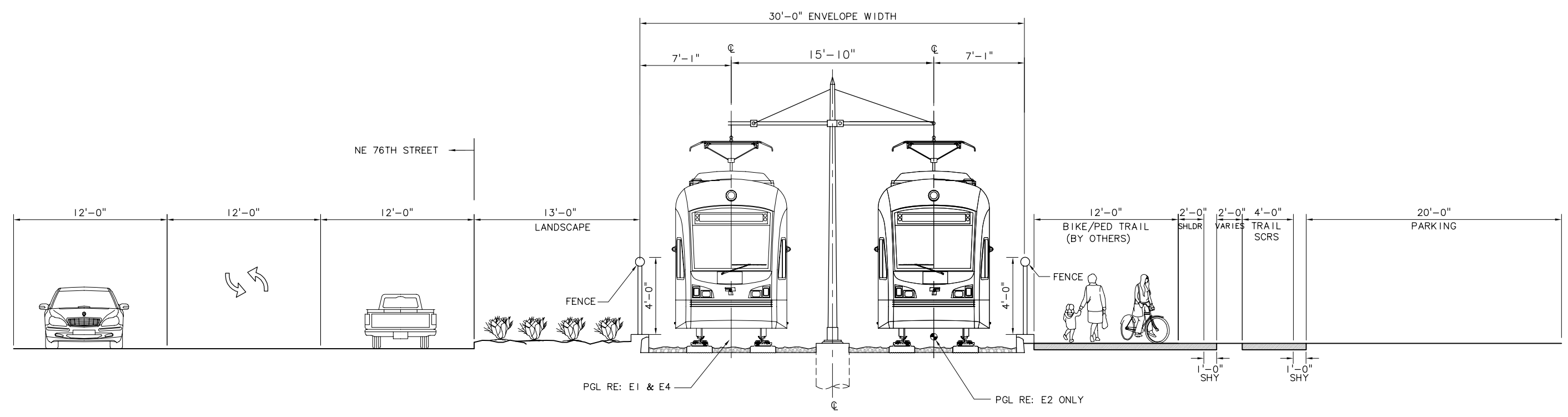
THIS PRINT RELEASED
 HALF SCALE

Drawing No.: E1-KX02
 Sheet No.:
 Rev.:
 E-41

XREF'S
 Resolved
 REG-DCON
 20-2234H
 Unresolved
 LTSCALE
 1=1



TYPICAL SECTION, EXISTING CONDITIONS-
 BNSF CORRIDOR, JUST EAST OF 168TH AVE NE
 SCALE: NOT TO SCALE



TYPICAL SECTION - FUTURE CONDITIONS BNSF CORRIDOR, JUST EAST OF
 168TH AVE NE TYPICAL OF ALTERNATIVES: E2, E1, E4 LOOKING WEST
 SCALE: NOT TO SCALE

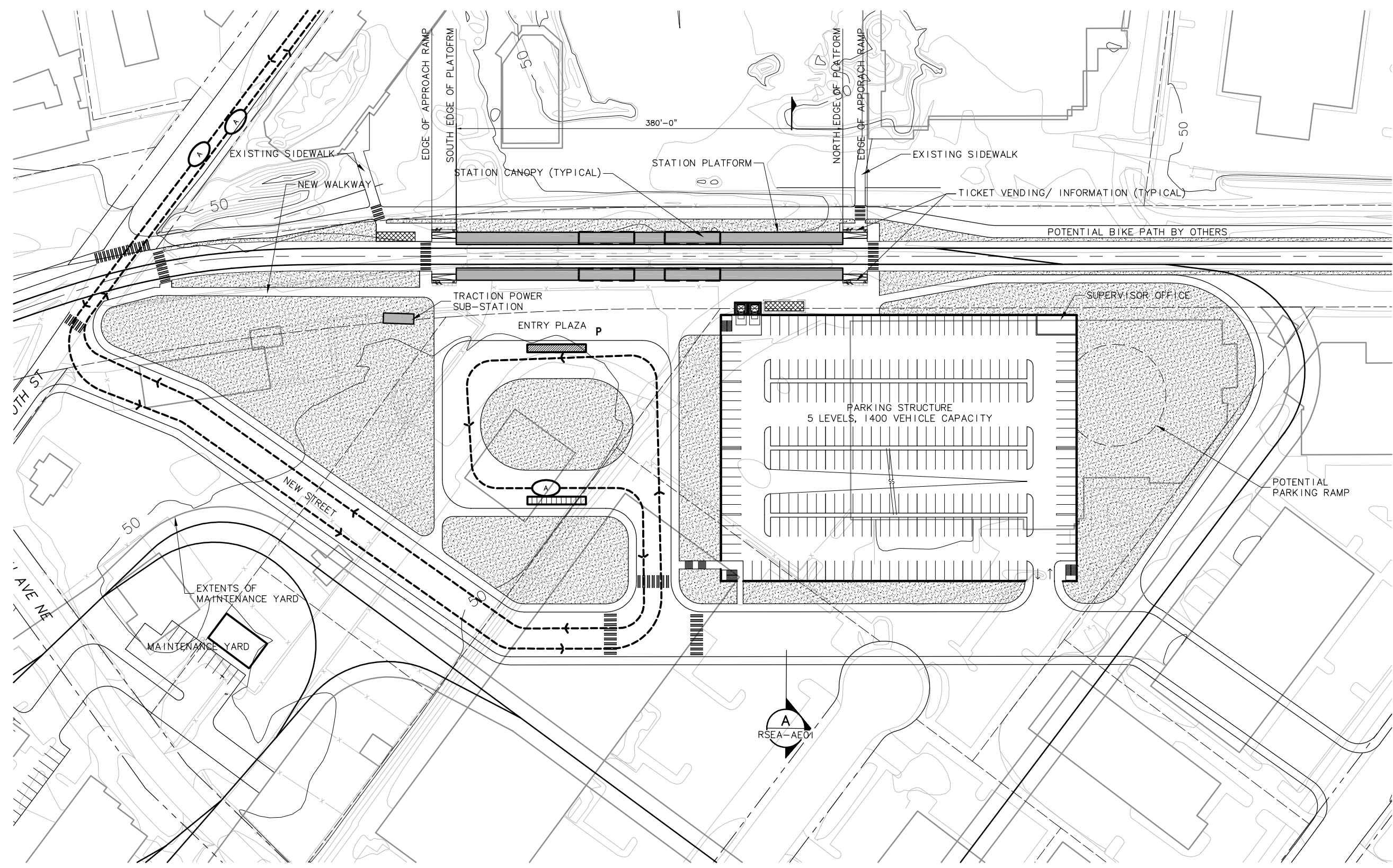
c:\work\ELEIE1_KX03.dwg
 10/16/08 11:18: eackerm OE5396

No.	Date	Dsn.	Chk.	App.	Revisions

FEIS CONCEPTUAL	Designed By:	CH2MHILL <small>IN ASSOCIATION WITH</small> PARSONS & INCA <small>ENGINEERS INC.</small>	Grijalva Engineering, L.L.C.		Scale:	EAST LINK PROJECT SEGMENT E ALTERNATIVE E1 TYPICAL SECTION		Drawing No.:	E1_KX03	
	Drawn By:				Contract No.:			Sheet No.:		Rev.:
	Checked By:				Submitted:			Date:		Date:
	Approved By:				Date:			Approved:		Date:

XREF'S
 Resolved
 ELE_EI_00
 ELE_EI_01
 ELE_RSEA1AS
 REG-DCON
 ZG-2234H
 x2346cn
 x2346sf
 x2349cn
 x2349sf
 x2646cn
 x2646sf
 x2649cn
 x2649sf
 Unresolved

LTSSCALE
 1"=1'

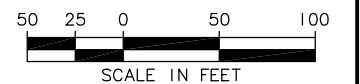


NOTES/LEGEND HEADING

I. ALIGNMENT EI

SYMBOLS KEY

- NEW BUS STOP
- EXISTING BUS STOP
- BUS LAYOVER
- BUS SHELTER
- PARATRANSIT STOP
- BUS ROUTE : 269, 291
- BIKE STORAGE
- BIKE SHELTER
- CROSSWALK
- LANDSCAPE
- TICKET VENDING/ INFORMATION
- TRACK



STATION ACCESS PLAN

SCALE: 1" = 50'

Designed By:					
Drawn By:					
Checked By:					
Approved By:					
No.	Date	Dsn.	Chk.	App.	Revisions

FEIS
 CONCEPTUAL

CH2MHILL
 IN ASSOCIATION WITH
PARSONS & INCA
 ENGINEERS INC.

Submitted: _____ Date: _____

IBI GROUP

Approved: _____ Date: _____

SOUNDTRANSIT

Date: _____

Scale: 1"=50'
 Filename: ELE IRSEA_AS01.dwg
 Contract No.: EL_SEG_E
 Date: _____

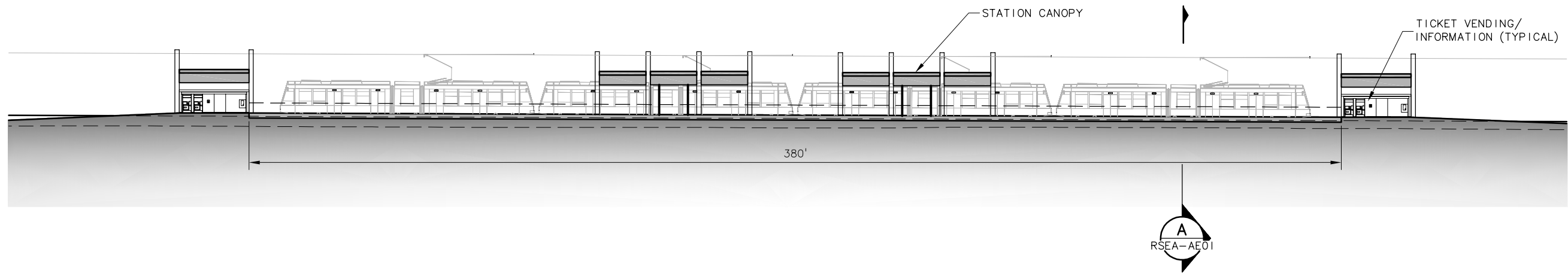
**EAST LINK PROJECT
 SEGMENT E**

SE REDMOND STATION
 BNSF AT-GRADE STATION
 STATION ACCESS PLAN

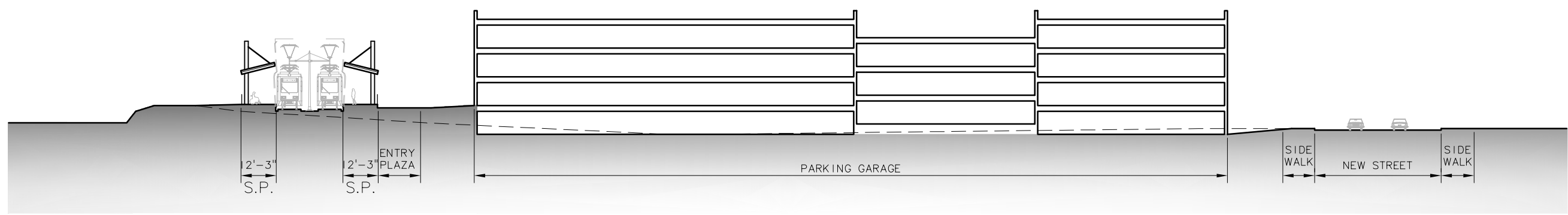
Drawing No.: RSEA-AS01
 Sheet No.: _____ Rev.: _____
E-43

c:\work\ELE IRSEA_AS01.dwg
 11/05/08 09:00 : eackerm OE5396

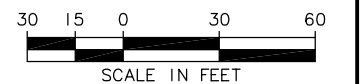
XREF'S
 Resolved
 ELE_RSEA1AX
 ELE_RSEA1AE
 REG-DCON
 ZG-2234H
 Unresolved
 LTSCALE
 1=1



STATION ELEVATION
 SCALE: 1" = 20'



STATION SECTION (A)
 SCALE: 1" = 30' RSEA-AE01



c:\work\ELE\IRSEA_AE01.dwg
 10/16/08 11:33 : eackerm OE5396

No.	Date	Dsn.	Chk.	App.	Revisions

Designed By:
 Drawn By:
 Checked By:
 Approved By:

FEIS
 CONCEPTUAL

CH2MHILL
 IN ASSOCIATION WITH
PARSONS & INCA
 ENGINEERS INC.

Submitted: _____ Date: _____

IBI GROUP

Approved: _____ Date: _____

SOUNDTRANSIT

Approved: _____ Date: _____

Scale: 1"=20'
 Filename: ELE\IRSEA_AE01.dwg
 Contract No.: EL_SEG_E
 Date: _____

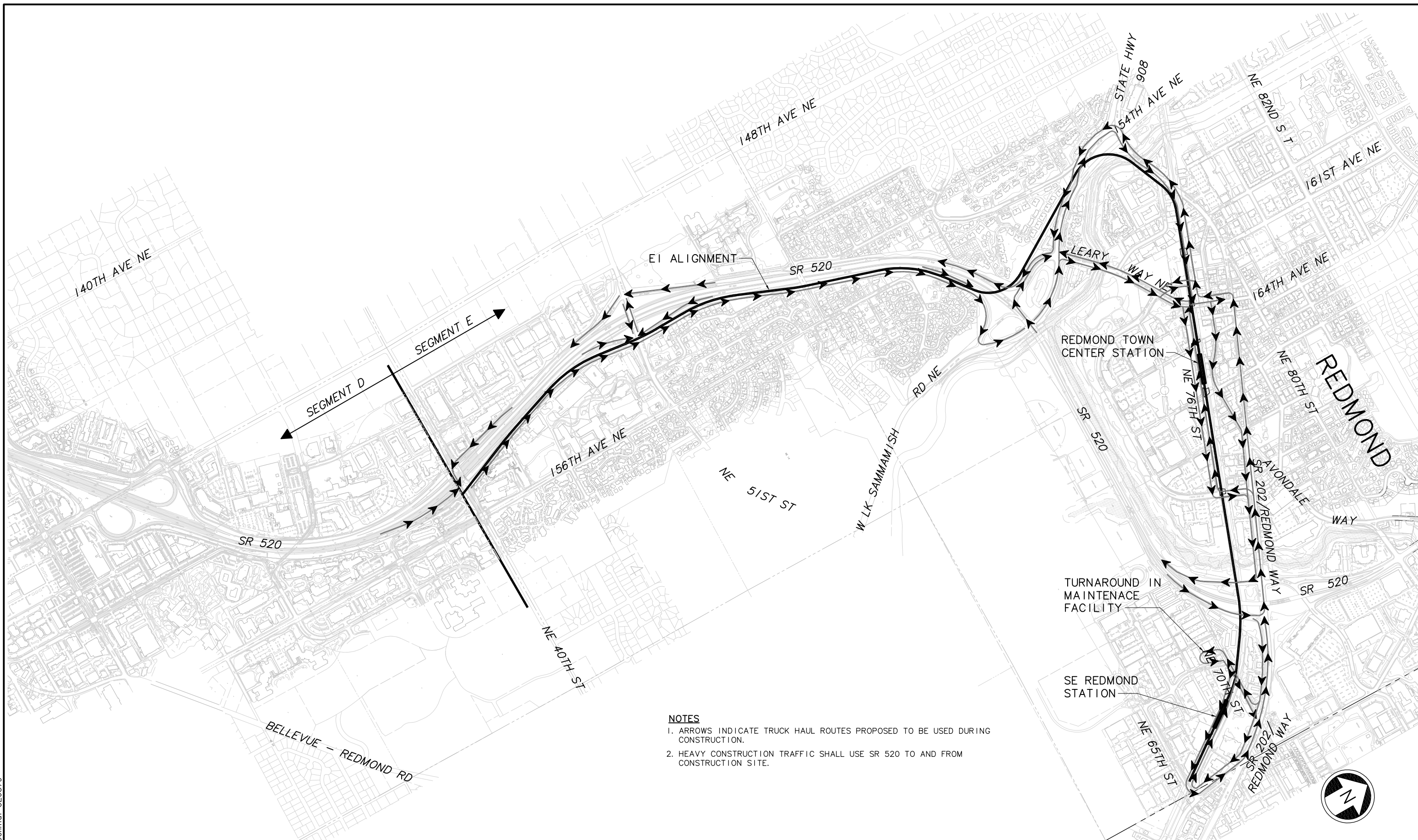
**EAST LINK PROJECT
 SEGMENT E**

SE REDMOND STATION
 BNSF AT-GRADE STATION
 ELEVATION, SECTION



Drawing No.: RSEA-AE01
 Sheet No.: _____ Rev.: _____
E-44

DWG INFO:
 LSCALE:
 1=1
 XREFS:
 -Attach:
 -Overlay:
 ELE_IEI__CC01.dwg
 20-2234H
 x1434ef
 x1437rx
 x1437ef
 x1734ef
 x1737rx
 x1737ef
 x1740rx
 x1740ef
 x1743rx
 x1743ef
 x1746rx
 x1746ef
 x1749rx
 x1749ef
 x2037rx
 x2037ef
 x2040rx
 x2040ef
 x2043rx
 x2043ef
 x2046rx
 x2046ef
 x2049rx
 x2049ef
 x2052rx
 x2052ef
 x2346rx
 x2346ef
 x2349rx
 x2349ef
 x2352rx
 x2352ef
 x2646rx
 x2646ef
 x2649rx
 x2649ef
 x2652rx
 x2652ef
 -Unresolved:



- NOTES**
1. ARROWS INDICATE TRUCK HAUL ROUTES PROPOSED TO BE USED DURING CONSTRUCTION.
 2. HEAVY CONSTRUCTION TRAFFIC SHALL USE SR 520 TO AND FROM CONSTRUCTION SITE.



c:\work\feis\LELE_IEI__CC01.dwg
 02/15/11 14:55 : bolimaf OEG579

No.	Date	Dsn.	Chk.	App.	Revisions

Designed By:
 Drawn By:
 Checked By:
 Approved By:

**FEIS
 CONCEPTUAL**

CH2MHILL
 IN ASSOCIATION WITH
PARSONS & INCA
 ENGINEERS INC.

Submitted: Date: Approved: Date:

SOUNDTRANSIT

Scale: NTS
 Filename: ELE_IEI__CC01.dwg
 Contract No.:
 Date: 07/30/10

**LINK LIGHT RAIL PROJECT
 EAST CORRIDOR
 SEGMENT E
 ALTERNATIVE EI
 CONSTRUCTION TRUCK HAUL ROUTE PLAN**

Drawing No.: EI__CC01
 Sheet No.: Rev.:
E-45