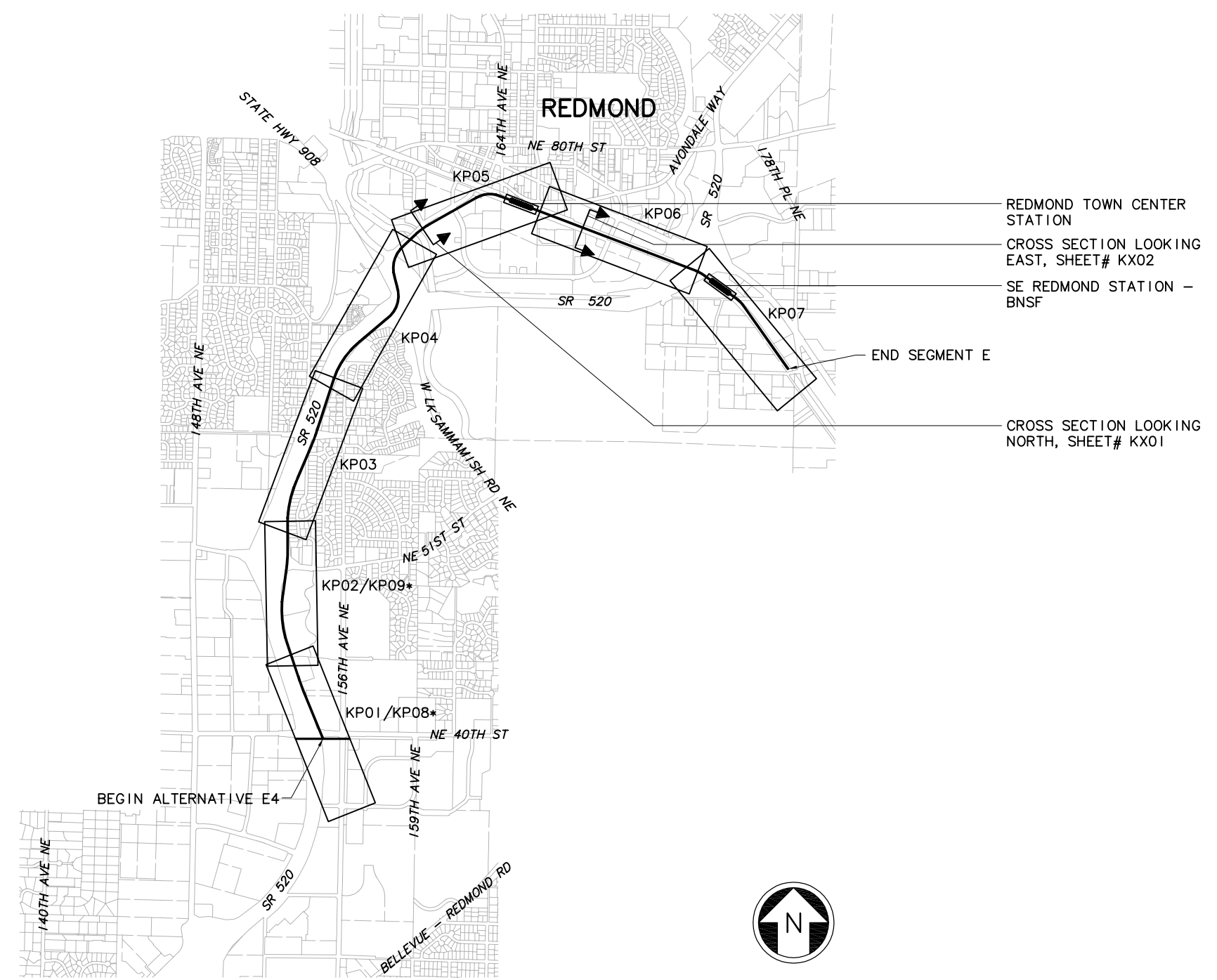


XREF'S
 Resolved
 E4_E4_KA
 REG-DCON
 ZG-2234H
 x1437rx
 x1737rx
 x1740rx
 x1743rx
 x1746rx
 x1749rx
 x2037rx
 x2040rx
 x2043rx
 x2046rx
 x2049rx
 x2052rx
 x2346rx
 x2349rx
 x2352rx
 x2646rx
 x2649rx
 x2652rx
 Unresolved
 key_East
 LTSCALE
 1=1



REDMOND TOWN CENTER STATION
 CROSS SECTION LOOKING EAST, SHEET# KX02
 SE REDMOND STATION - BNSF
 END SEGMENT E
 CROSS SECTION LOOKING NORTH, SHEET# KX01

* NOTE: KP08 AND KP09 REPRESENT INTERIM TERMINUS AT THE OVERLAKE TRANSIT CENTER IN SEGMENT D.

c:\work\ELE1E4_GZ05.dwg
 10/16/08 11:26 : eackerm OE5396

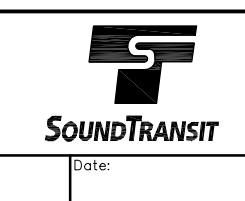
| | | | | | |
|-----|------|------|------|------|-----------|
| | | | | | |
| | | | | | |
| | | | | | |
| | | | | | |
| | | | | | |
| No. | Date | Dsn. | Chk. | App. | Revisions |

Designed By:
 Drawn By:
 Checked By:
 Approved By:

**FEIS
 CONCEPTUAL**

CH2MHILL
 IN ASSOCIATION WITH
PARSONS & INCA
 ENGINEERS INC.

Submitted: Date:
 Approved: Date:



Scale: NTS
 Filename: ELE1E4_GZ05.dwg
 Contract No.: EL_SEG_E
 Date:

**EAST LINK PROJECT
 SEGMENT E
 ALTERNATIVE E4**

KEY PLAN

Drawing No.: E4_GZ05
 Sheet No.: Rev.:
E-46

XREF'S
 Resolved
 E4_E4_CM
 E4_E4_KA
 REG-DCON
 ZG-2234H
 ZG-G10010
 x1740xf
 x2040xf
 x2040sf
 Unresolved
 key_East
 key_Segment

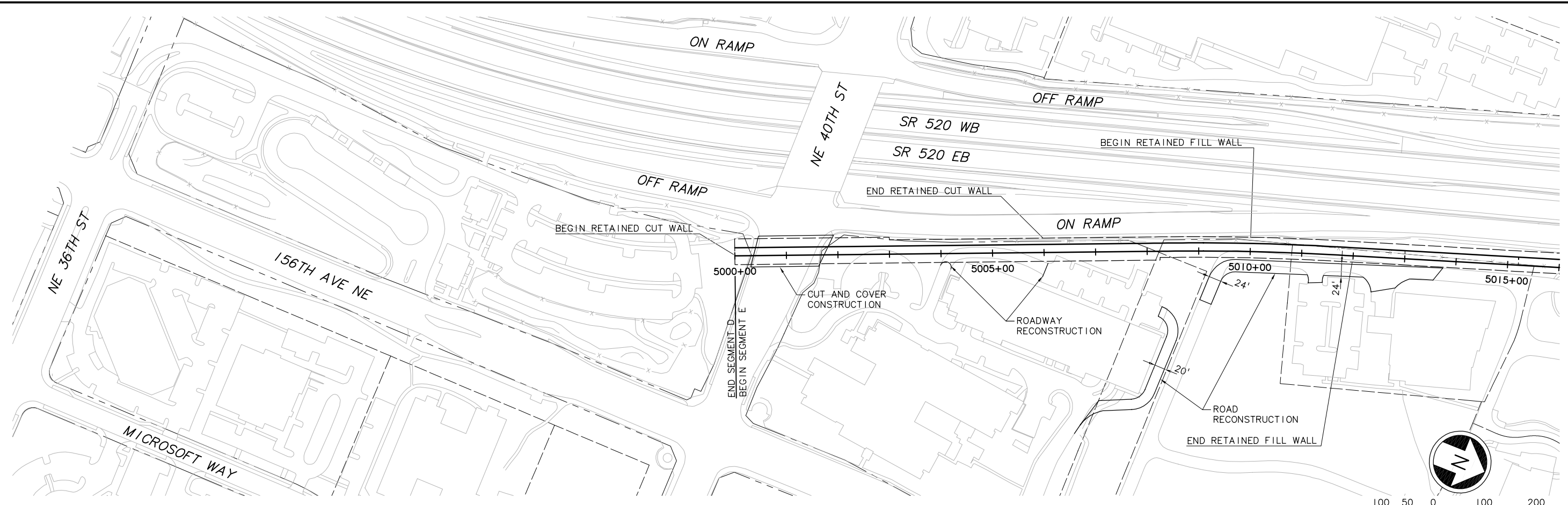
LTSCALE
 1/8"

3

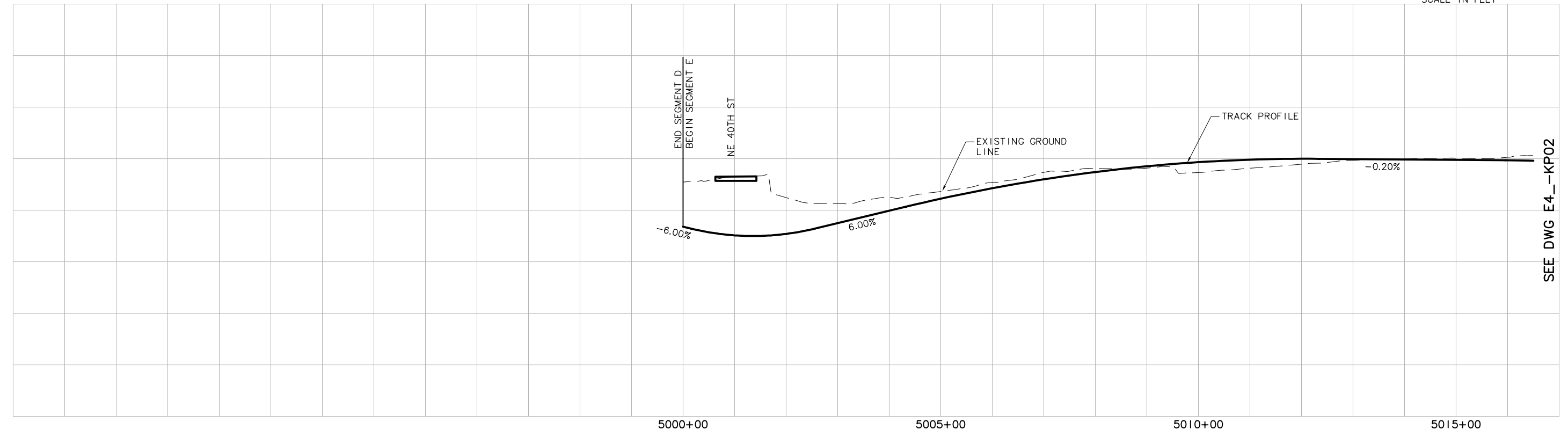
4

5

c:\work\ELE\E4_KP01.dwg
 10/16/08 11:26 : eackerm OE5396



SEE DWG E4_KP02



SEE DWG E4_KP02

| | | | | | |
|--------------|------|------|------|------|-----------|
| Designed By: | | | | | |
| Drawn By: | | | | | |
| Checked By: | | | | | |
| Approved By: | | | | | |
| No. | Date | Dsn. | Chk. | App. | Revisions |

FEIS CONCEPTUAL

CH2MHILL
 IN ASSOCIATION WITH
PARSONS & INCA
 ENGINEERS INC.

Grijalva
 Engineering, L.L.C.

SOUNDTRANSIT

Submitted: _____ Date: _____ Approved: _____ Date: _____

Scale:
 H: 1"=100'; V: 1"=25'
 Filename:
 ELE\E4_KP01.dwg
 Contract No.:
 EL_SEG_E

EAST LINK PROJECT
 SEGMENT E
 ALTERNATIVE E4
 TRACK PLAN & PROFILE

THIS PRINT RELEASED
 HALF SCALE

Drawing No.:
E4_KP01
 Sheet No.: _____ Rev.: _____
E-47

XREF'S
 Resolved
 E4_E4_CM
 E4_E4_JD
 E4_E4_KA
 REG-DCON
 ZG-2234H
 ZG-G10010
 x1740rx
 x1740sf
 x1743rx
 x1743sf
 Unresolved
 key_East
 key_Segment

LTSCALE
 1=1

1

2

3

4

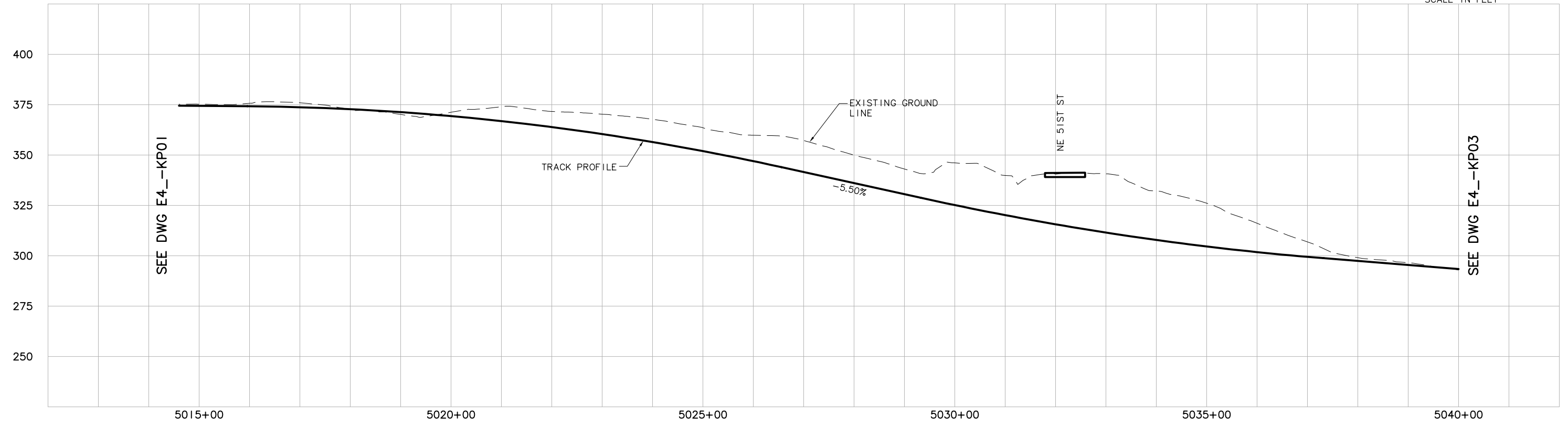
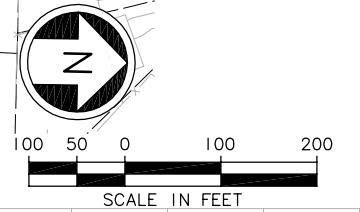
5

c:\work\ELE\E4_KP02.dwg
 10/16/08 11:27 : eackerm OE5396

SEE DWG E4_KP01



SEE DWG E4_KP03



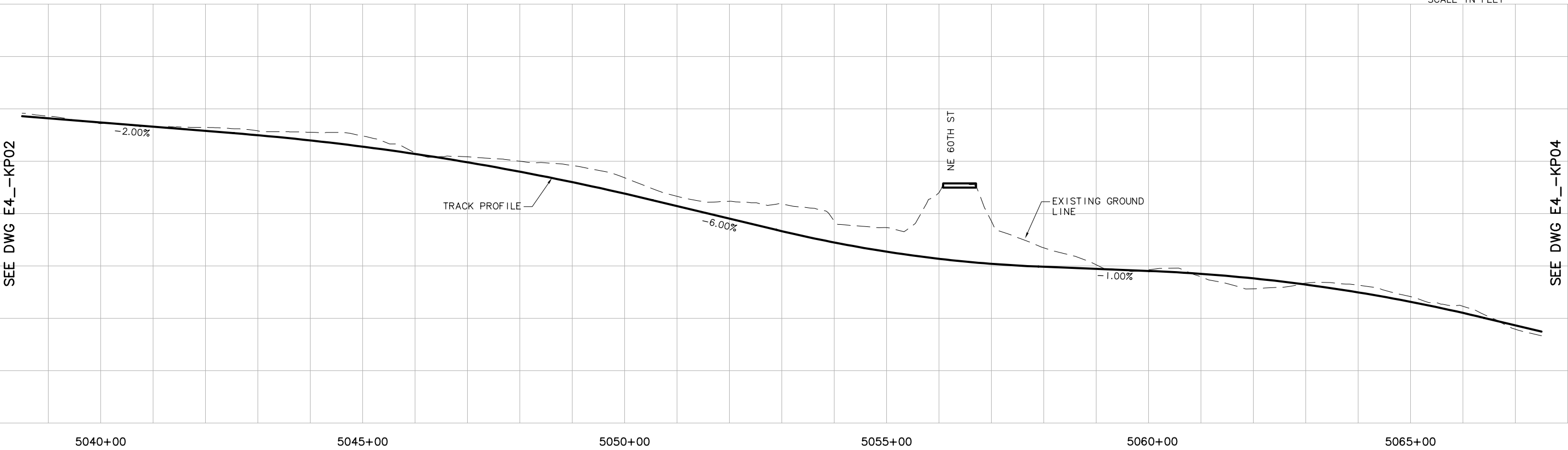
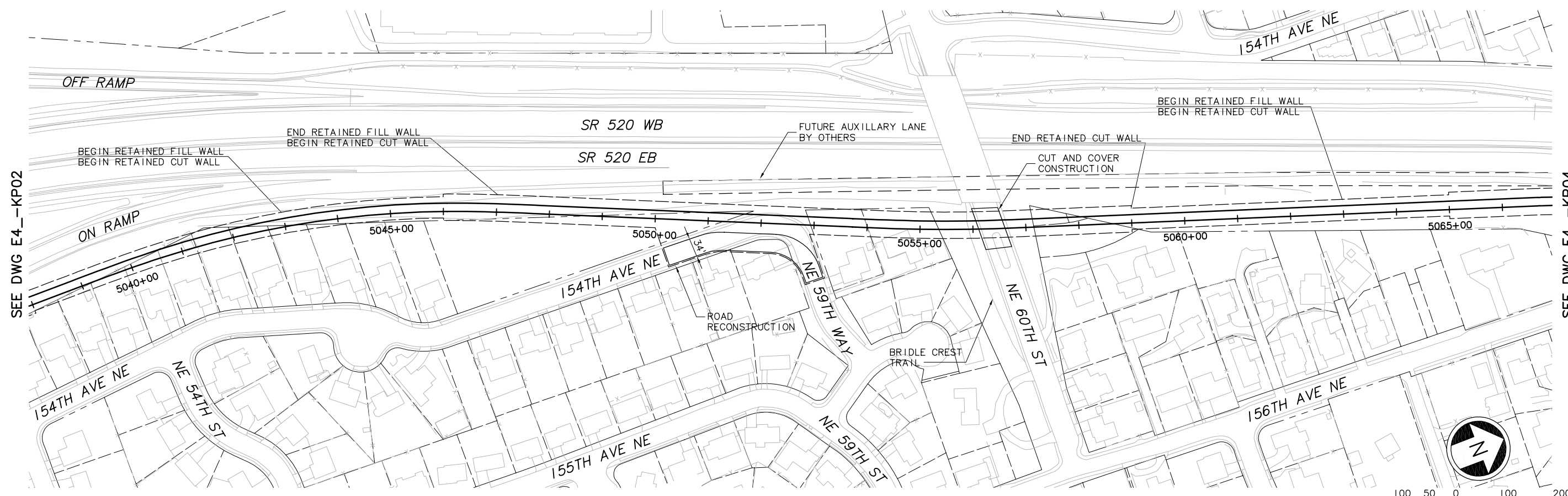
SEE DWG E4_KP01

SEE DWG E4_KP03

| | | | | | | | | | | | | | | | | | | | | | | | | | | | | | | | | | | | |
|---|-------|-----------|-------|-------|------|-----------|--|--|--|--|--|--|--|--|--|--|--|--|--|--|--|--|--|--|--|-------------------------------------|---|---------------------------------|--|--|---|--|--------------------------------|---------------------------|-------|
| <table border="1"> <tr><td>No.</td><td>Date</td><td>Dsn.</td><td>Chk.</td><td>App.</td><td>Revisions</td></tr> <tr><td> </td><td> </td><td> </td><td> </td><td> </td><td> </td></tr> <tr><td> </td><td> </td><td> </td><td> </td><td> </td><td> </td></tr> <tr><td> </td><td> </td><td> </td><td> </td><td> </td><td> </td></tr> </table> | No. | Date | Dsn. | Chk. | App. | Revisions | | | | | | | | | | | | | | | | | | | Designed By: Drawn By: Checked By: Approved By: | FEIS CONCEPTUAL | CH2MHILL <small>IN ASSOCIATION WITH</small> PARSONS & INCA <small>ENGINEERS INC.</small> | Grijalva Engineering, L.L.C. | | Scale: H: 1"=100'; V: 1"=25' Filename: ELE\E4_KP02.dwg Contract No.: EL_SEG_E | EAST LINK PROJECT SEGMENT E ALTERNATIVE E4 TRACK PLAN & PROFILE | | Drawing No.: E4_KP02 | Sheet No.: E-48 | Rev.: |
| | No. | Date | Dsn. | Chk. | App. | Revisions | | | | | | | | | | | | | | | | | | | | | | | | | | | | | |
| | | | | | | | | | | | | | | | | | | | | | | | | | | | | | | | | | | | |
| | | | | | | | | | | | | | | | | | | | | | | | | | | | | | | | | | | | |
| | | | | | | | | | | | | | | | | | | | | | | | | | | | | | | | | | | | |
| Submitted: | Date: | Approved: | Date: | Date: | | | | | | | | | | | | | | | | | | | | | | | | | | | | | | | |
| | | | | | | | | | | | | | | | | | | | | | | | | | | | | | | | | | | | |
| | | | | | | | | | | | | | | | | | | | | | | | | | | | | | | | | | | | |

XREF'S
 Resolved
 E4_E4_CM
 E4_E4_JD
 E4_E4_KA
 REG-DCON
 ZG-2234H
 ZG-G10010
 x1743rf
 x1746rf
 x1746sf
 x2046rf
 x2046sf
 Unresolved
 key_East
 key_Segment

LTSKALE
 1"=1'



c:\work\ELE\E4_KP03.dwg
 10/16/08 11:27 : eackerm OE5396

| | | | | | |
|-----|------|------|------|------|-----------|
| No. | Date | Dsn. | Chk. | App. | Revisions |
| | | | | | |
| | | | | | |
| | | | | | |

Designed By:
 Drawn By:
 Checked By:
 Approved By:

FEIS
 CONCEPTUAL

CH2MHILL
 IN ASSOCIATION WITH
PARSONS & INCA
 ENGINEERS INC.

Grijalva
 Engineering, L.L.C.

SOUNDTRANSIT

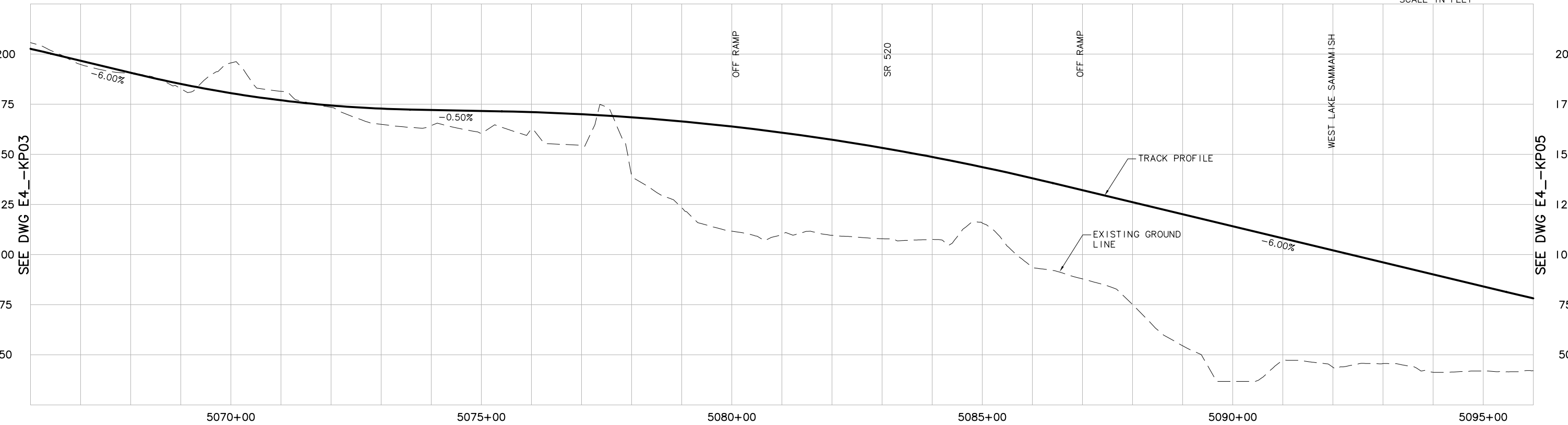
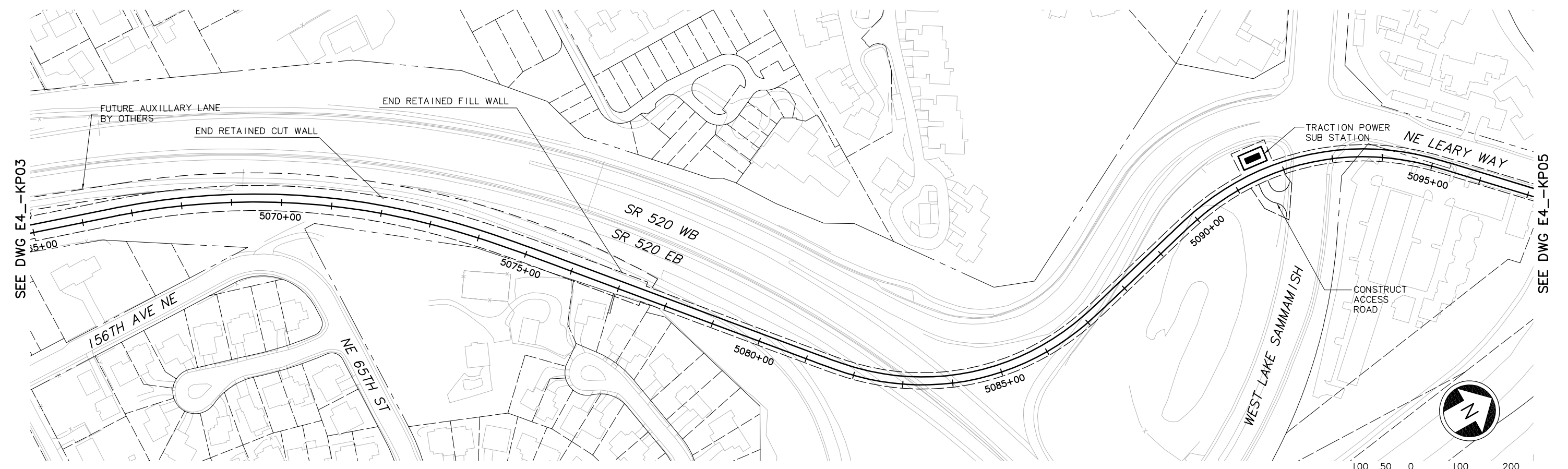
Scale:
 H: 1"=100'; V: 1"=25'
 Filename:
 ELE\E4_KP03.dwg
 Contract No.:
 EL_SEG_E

EAST LINK PROJECT
 SEGMENT E
 ALTERNATIVE E4
 TRACK PLAN & PROFILE

Drawing No.:
E4_KP03
 Sheet No.:
E-49
 Rev.:

XREF'S
 Resolved
 E4_520_PLAN_2
 E4_BrCrk
 E4_E4_CM
 E4_E4_JO
 E4_E4_KA
 REG-DCON
 ZG-2234H
 ZG-G10010
 x1746rx
 x1746sf
 x2046rx
 x2046sf
 x2049rx
 x2049sf
 Unresolved
 key_East
 key_Segment

LTS
 1"=1'



c:\work\EL\E4_KP04.dwg
 10/16/08 11:28 : eackerm OE5396

| | | | | | |
|-----|------|------|------|------|-----------|
| | | | | | |
| | | | | | |
| | | | | | |
| | | | | | |
| | | | | | |
| No. | Date | Dsn. | Chk. | App. | Revisions |

Designed By:
 Drawn By:
 Checked By:
 Approved By:

**FEIS
 CONCEPTUAL**

CH2MHILL
 IN ASSOCIATION WITH
PARSONS & INCA
 ENGINEERS INC.

Grijalva
 Engineering, L.L.C.

SOUNDTRANSIT

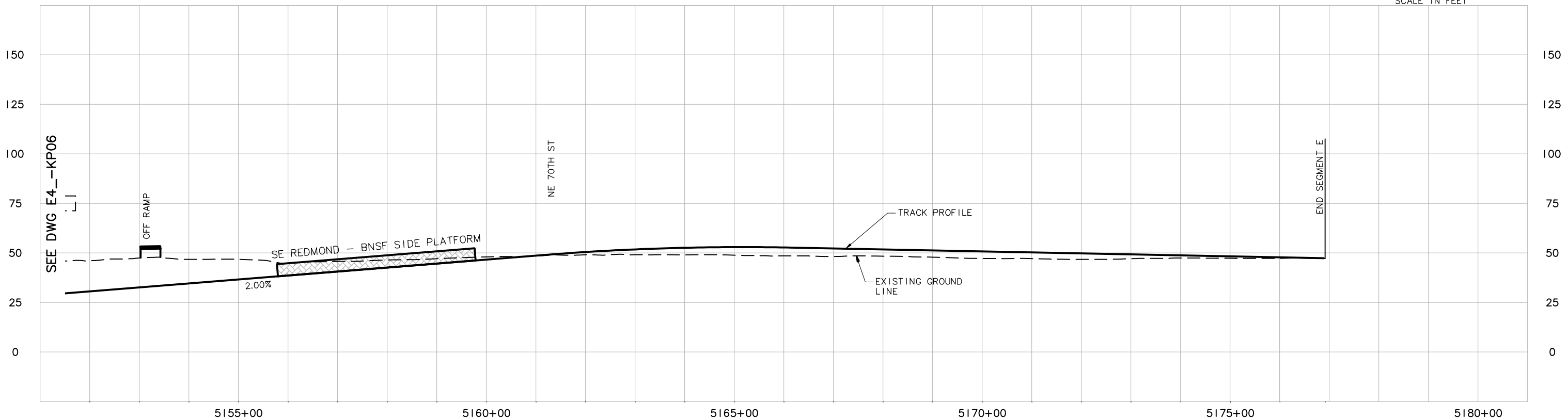
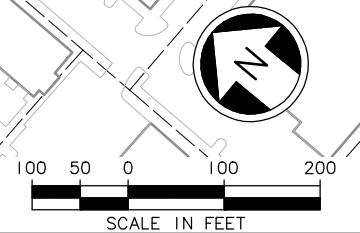
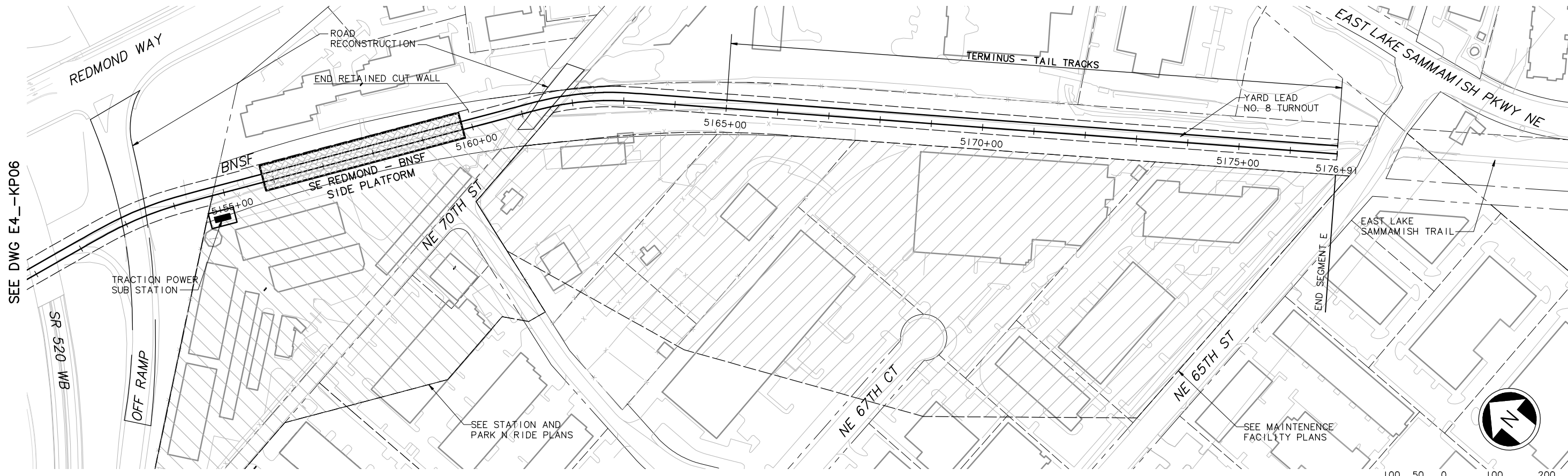
Scale:
 H: 1"=100'; V: 1"=25'
 Filename:
 ELEIE4_KP04.dwg
 Contract No.:
 EL_SEG_E

**EAST LINK PROJECT
 SEGMENT E
 ALTERNATIVE E4
 TRACK PLAN & PROFILE**

THIS PRINT RELEASED
 HALF SCALE

Drawing No.:
E4-KP04
 Sheet No.:
E-50
 Rev.:

DWG INFO:
 L1SCALE:
 1=1
 XREFS:
 -Attach:
 -Overlay:
 ELE_520_PLAN_2
 ELE_BRCK
 ELE_E4_CM
 ELE_E4_JO
 ELE_E4_KA
 ZG-2234H
 ZG-010010
 x2349r
 x2349s
 x2646r
 x2646s
 x2649r
 x2649s
 -Unresolved:
 ELE_E4_MF
 key_East
 key_Segment 2



c:\work\feis\segment_e\ELE_E4_KP07.dwg
 06/14/11 14:36 : khuum 066585

| | | | | | |
|-----|------|------|------|------|-----------|
| No. | Date | Dsn. | Chk. | App. | Revisions |
| | | | | | |
| | | | | | |
| | | | | | |
| | | | | | |

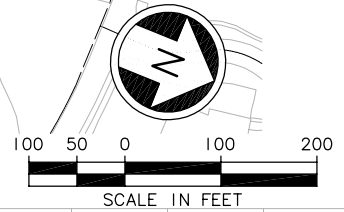
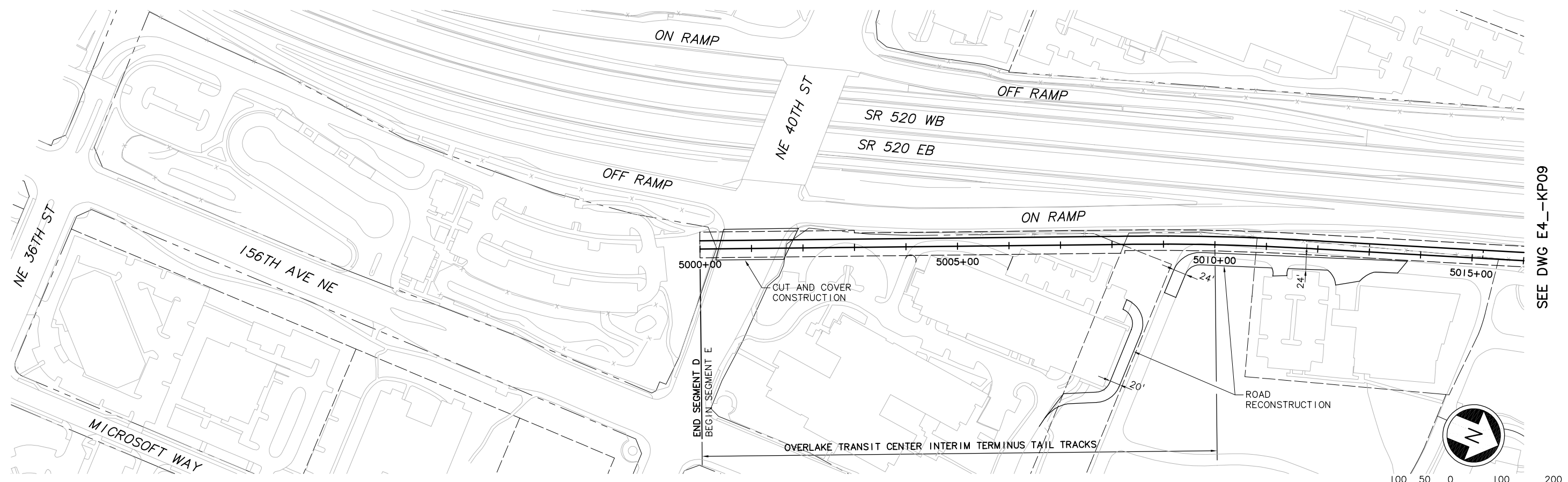
| | |
|--------------|--|
| Designed By: | |
| Drawn By: | |
| Checked By: | |
| Approved By: | |

| | | | | | |
|----------------------------|-----------------------------|---|-----------|--|---------------------------------|
| FEIS CONCEPTUAL | IN ASSOCIATION WITH | Grijalva Engineering, L.L.C. | | Scale: H: 1"=100'; V: 1"=25' Filename: ELE_E4_KP07.dwg Contract No.: EL_SEG_E | Drawing No.: E4_-KP07 |
| | Submitted: | Date: | Approved: | Date: | Sheet No.: E-53 |

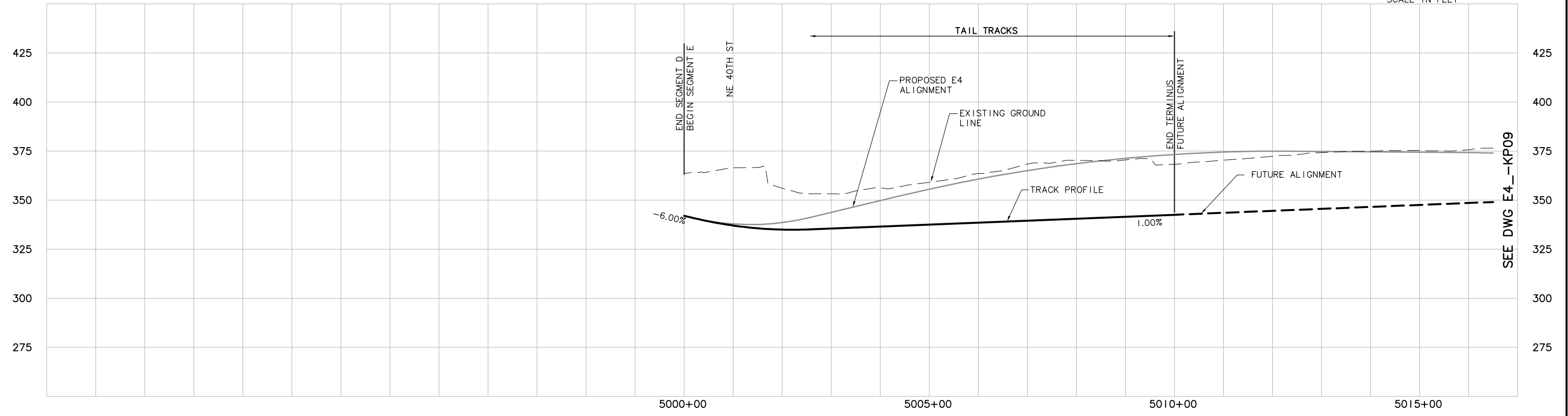
LINK LIGHT RAIL PROJECT
 EAST CORRIDOR
 SEGMENT E
 ALTERNATIVE E4
 TRACK PLAN & PROFILE

XREF'S
 Resolved
 ELE_E4_CM
 ELE_E4_JD
 ELE_E4_KA
 ELE_EX_KA
 REG-DCON
 ZG-2234H
 ZG-G10010
 x1740rx
 x1740sf
 x2040rx
 x2040sf
 Unresolved
 key_East
 key_Segment

LTSCALE
 1=1



SEE DWG E4_-KP09



SEE DWG E4_-KP09

c:\work\ELEIE4_-KP08.dwg
 10/16/08 11:29 : eackerm OE5396

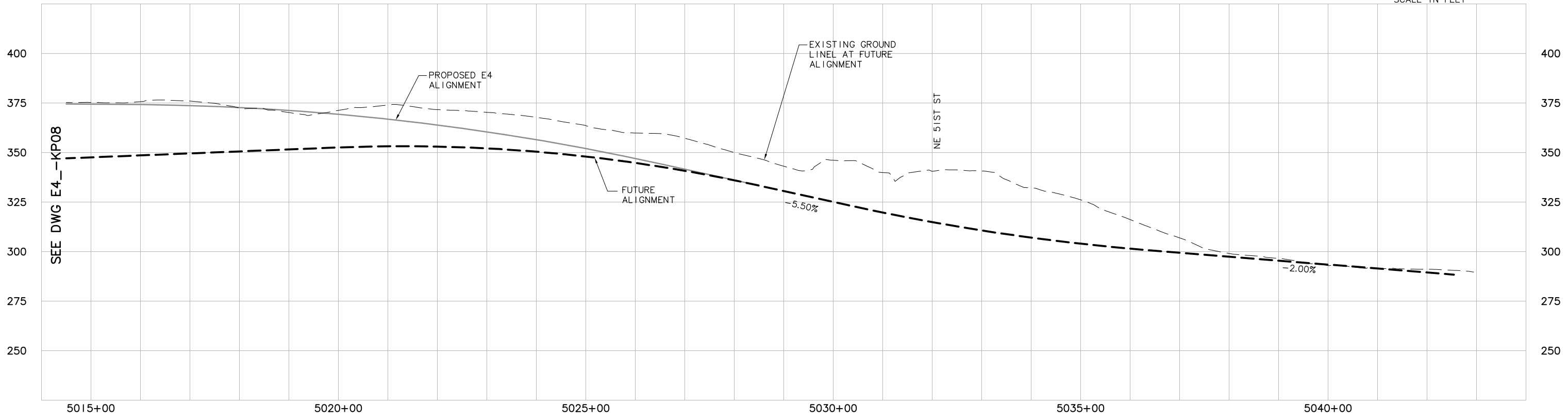
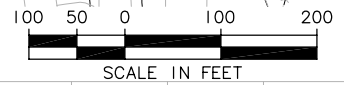
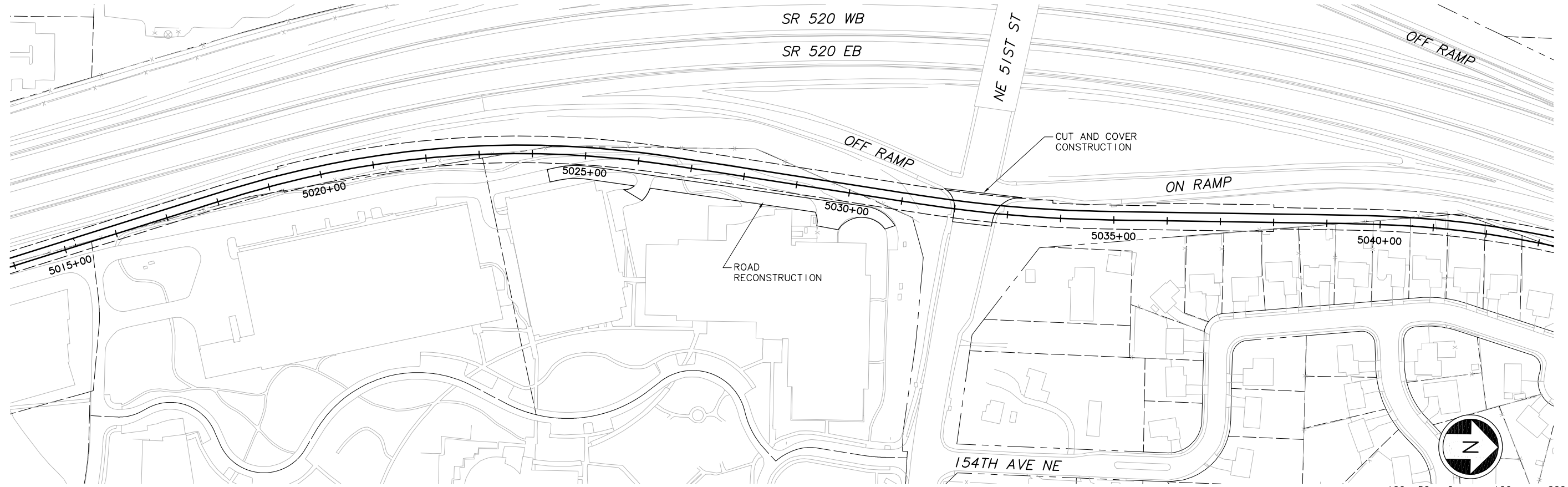
| | | | | | |
|--------------|------|------|------|------|-----------|
| Designed By: | | | | | |
| Drawn By: | | | | | |
| Checked By: | | | | | |
| Approved By: | | | | | |
| No. | Date | Dsn. | Chk. | App. | Revisions |

| | | | | | | |
|----------------------------|---|---------------------------------|-----------|---|---|--|
| FEIS CONCEPTUAL | CH2MHILL <small>IN ASSOCIATION WITH</small> PARSONS & INCA <small>ENGINEERS INC.</small> | Grijalva Engineering, L.L.C. | | Scale: H: 1"=100'; V: 1"=25' Filename: ELEIE4_-KP08.dwg Contract No.: EL_SEG_E | EAST LINK PROJECT SEGMENT E ALTERNATIVE E4 TRACK PLAN & PROFILE INTERIM TERMINUS | Drawing No.: E4_-KP08 Sheet No.: E-54 |
| | Submitted: | Date: | Approved: | Date: | | Rev.: |

XREF'S
 Resolved
 E4_E4_CM
 E4_E4_JD
 E4_E4_KA
 E4_EX_KA
 REG-DCON
 ZG-2234H
 ZG-G10010
 x1740rx
 x1740sf
 x1743rx
 x1743sf
 Unresolved
 key_East
 key_Segment

LTSCALE
 1=1

SEE DWG E4_KP08



SEE DWG E4_KP08

c:\work\ELEI\E4_KP09.dwg
 10/16/08 11:29 : eackerm OE5396

| | | | | | |
|-----|------|------|------|------|-----------|
| | | | | | |
| | | | | | |
| | | | | | |
| | | | | | |
| | | | | | |
| | | | | | |
| | | | | | |
| | | | | | |
| No. | Date | Dsn. | Chk. | App. | Revisions |

Designed By:
 Drawn By:
 Checked By:
 Approved By:

FEIS
 CONCEPTUAL

CH2MHILL
 IN ASSOCIATION WITH
PARSONS & INCA
 ENGINEERS INC.

Grijalva
 Engineering, L.L.C.
 Submitted: _____ Date: _____
 Approved: _____ Date: _____

SOUNDTRANSIT

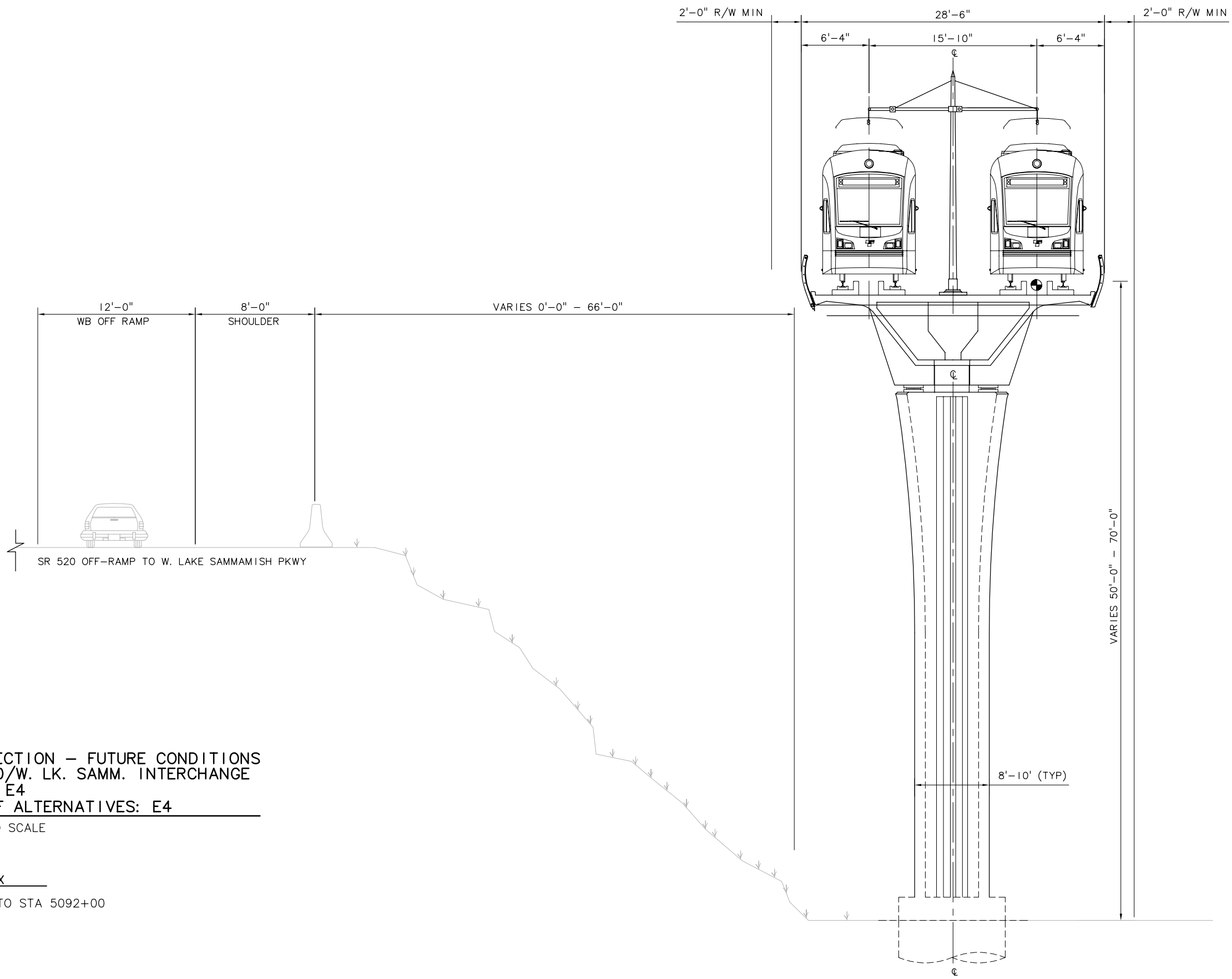
Scale:
 H: 1"=100'; V: 1"=25'
 Filename:
 ELEI\E4_KP09.dwg
 Contract No.:
 EL_SEG_E
 Date: _____

**EAST LINK PROJECT
 SEGMENT E
 ALTERNATIVE E4
 TRACK PLAN & PROFILE
 INTERIM TERMINUS**



Drawing No.: **E4_KP09**
 Sheet No.: _____ Rev.: _____
E-55

XREF'S
 Resolved
 REG-DCON
 20-2234H
 Unresolved
 L7SCALE
 1=1



TYPICAL SECTION - FUTURE CONDITIONS
 NEAR SR520/W. LK. SAMM. INTERCHANGE
 ALIGNMENT E4
 TYPICAL OF ALTERNATIVES: E4
 SCALE: NOT TO SCALE

LIMITS APPROX
 STA 5088+00 TO STA 5092+00

c:\work\ELEIE4_KX01.dwg
 10/16/08 11:30 : eackerm OE5396

| | | | | | |
|-----|------|------|------|------|-----------|
| No. | Date | Dsn. | Chk. | App. | Revisions |
| | | | | | |
| | | | | | |
| | | | | | |
| | | | | | |

Designed By:
 Drawn By:
 Checked By:
 Approved By:

FEIS
 CONCEPTUAL

CH2MHILL
 IN ASSOCIATION WITH
PARSONS & INCA
 ENGINEERS INC.

Grijalva
 Engineering, L.L.C.

SOUNDTRANSIT

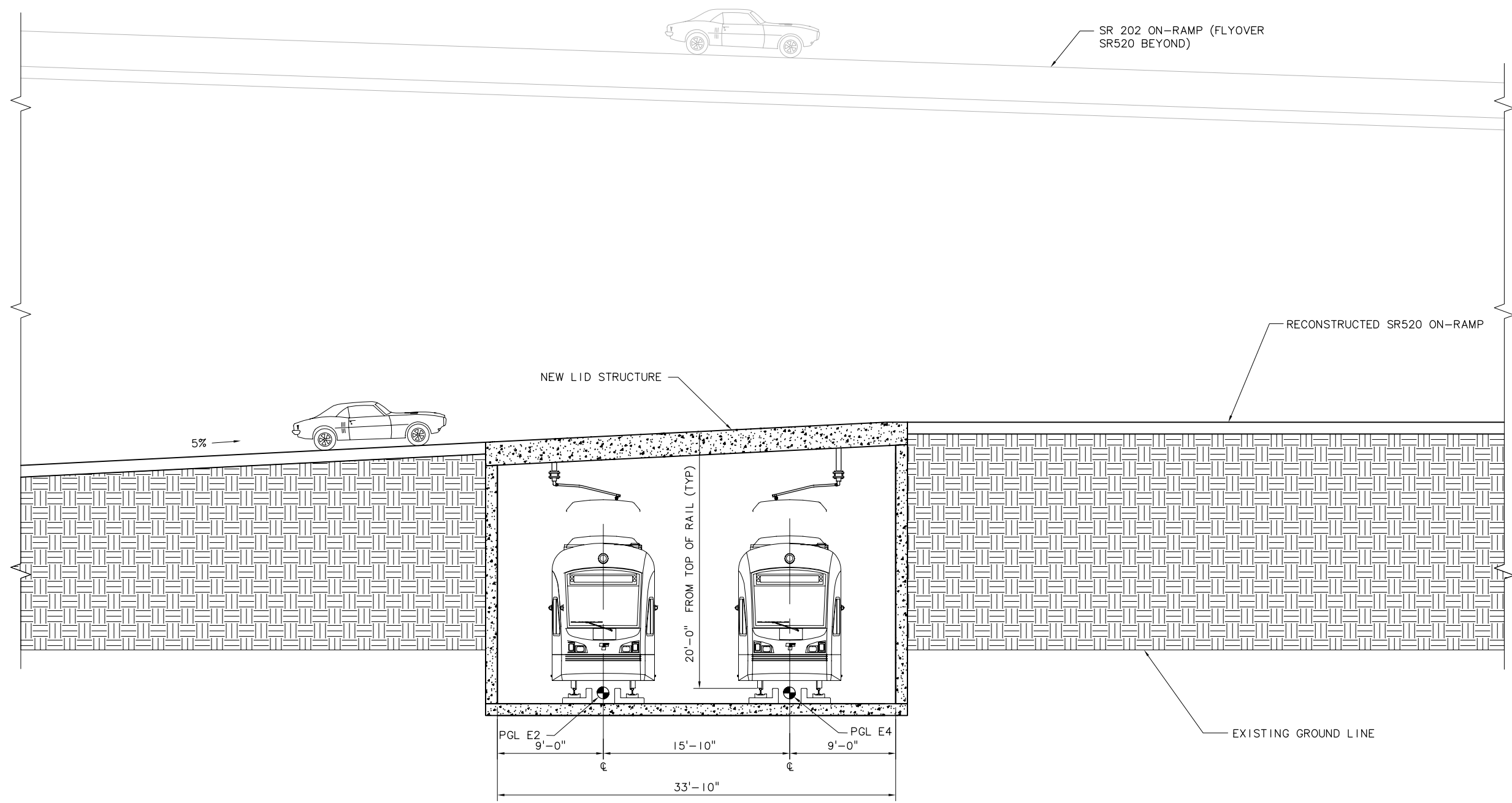
Scale: NTS
 Filename: ELEIE4_KX01.dwg
 Contract No.: EL_SEG_E

EAST LINK PROJECT
 SEGMENT E
 ALTERNATIVE E4
 TYPICAL SECTION

THIS PRINT RELEASED
 HALF SCALE

Drawing No.: E4_KX01
 Sheet No.: Rev.:
 E-56

XREF'S
 Resolved
 REG-DCON
 20-2234H
 Unresolved
 LTSCALE
 1=1



SECTION AT SR520 ONRAMP AT SR202 FLYOVER
 TYPICAL OF ALTERNATIVES E2 & E4 (LOOKING EAST)
 SCALE: NOT TO SCALE

LIMITS
 EB TRACK STA 5143+00 TO STA 5143+50 (E2)
 EB TRACK STA 5148+40 TO STA 5148+90 (E4)

c:\work\EL\E4_KX02.dwg
 10/16/08 11:30 : eackerm OE5396

| | | | | | |
|-----|------|------|------|------|-----------|
| No. | Date | Dsn. | Chk. | App. | Revisions |
| | | | | | |
| | | | | | |
| | | | | | |

Designed By:
 Drawn By:
 Checked By:
 Approved By:

FEIS
 CONCEPTUAL

CH2MHILL
 IN ASSOCIATION WITH
PARSONS & INCA
 ENGINEERS INC.

Grijalva
 Engineering, L.L.C.

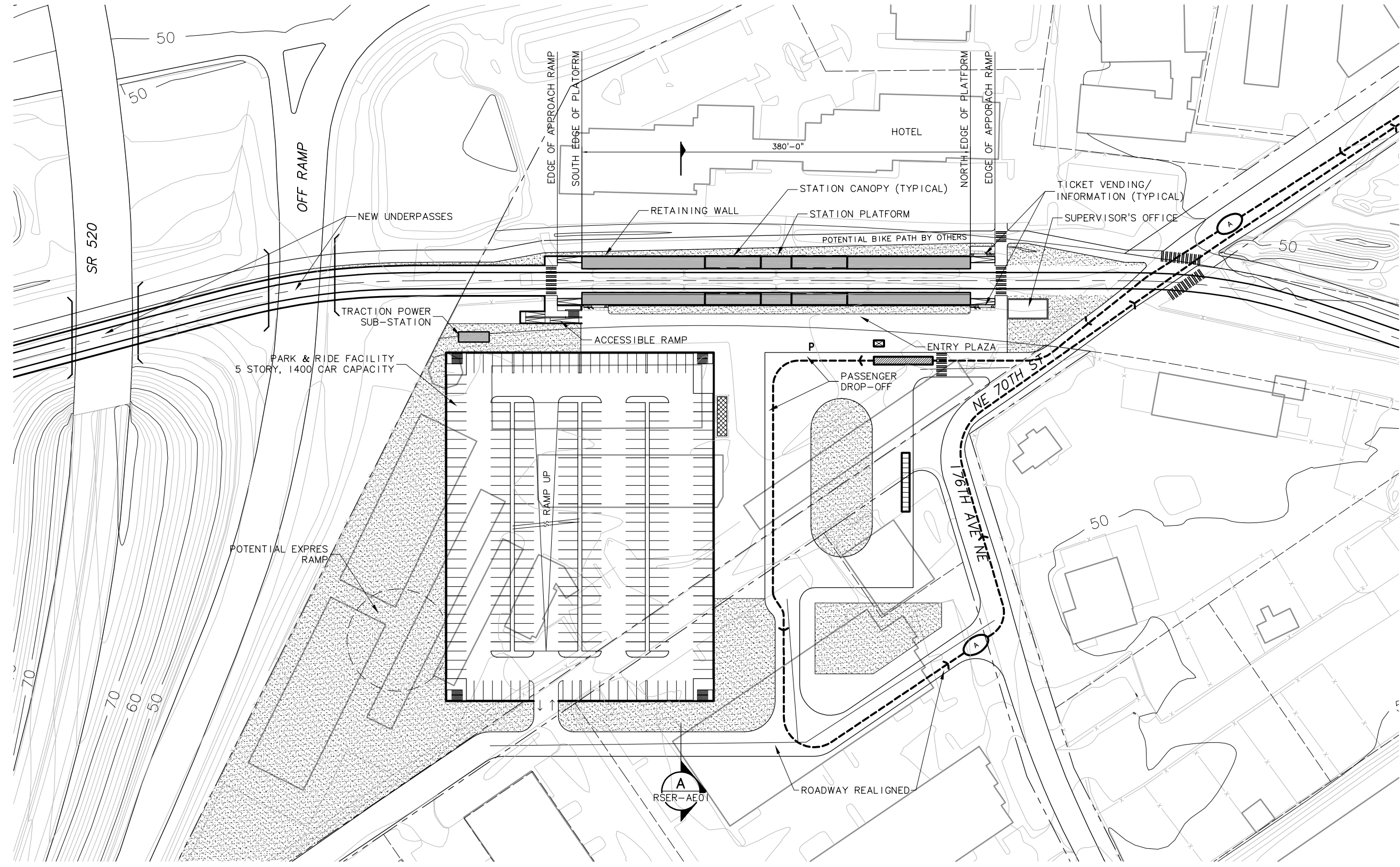
SOUNDTRANSIT

Scale: NTS
 Filename: ELE1E4_KX02.dwg
 Contract No.: EL_SEG_E

EAST LINK PROJECT
 SEGMENT E
 ALTERNATIVE E4
 TYPICAL SECTION

Drawing No.: E4_KX02
 Sheet No.:
 Rev.:
 E-57

XREF'S
 Resolved
 ELE_E4_AO
 ELE_E4_KA
 ELE_RSER_IAS
 REG-DCON
 ZG-2234H
 x2646cn
 x2646rx
 x2646sf
 x2649cn
 x2649rx
 x2649sf
 Unresolved
 LTSCALE
 1=1

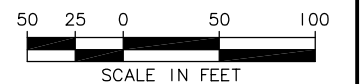


NOTES/LEGEND HEADING

I. ALIGNMENT E4

SYMBOLS KEY

| | |
|--|-----------------------------|
| | NEW BUS STOP |
| | EXISTING BUS STOP |
| | BUS LAYOVER |
| | BUS SHELTER |
| | PARATRANSIT STOP |
| | BUS ROUTE : 269, 291 |
| | BIKE STORAGE |
| | BIKE SHELTER |
| | CROSSWALK |
| | LANDSCAPE |
| | TICKET VENDING/ INFORMATION |
| | TRACK |



STATION ACCESS PLAN

SCALE: 1" = 50'

c:\work\ELE\RSER_AS01.dwg
 11/05/08 08:27 : eackerm OE5396

| | | | | | |
|--------------|------|------|------|------|-----------|
| Designed By: | | | | | |
| Drawn By: | | | | | |
| Checked By: | | | | | |
| Approved By: | | | | | |
| No. | Date | Dsn. | Chk. | App. | Revisions |

**FEIS
 CONCEPTUAL**

CH2MHILL
 IN ASSOCIATION WITH
PARSONS & INCA
 ENGINEERS INC.

Submitted: _____ Date: _____

IBI GROUP

Approved: _____ Date: _____

SOUNDTRANSIT

Date: _____

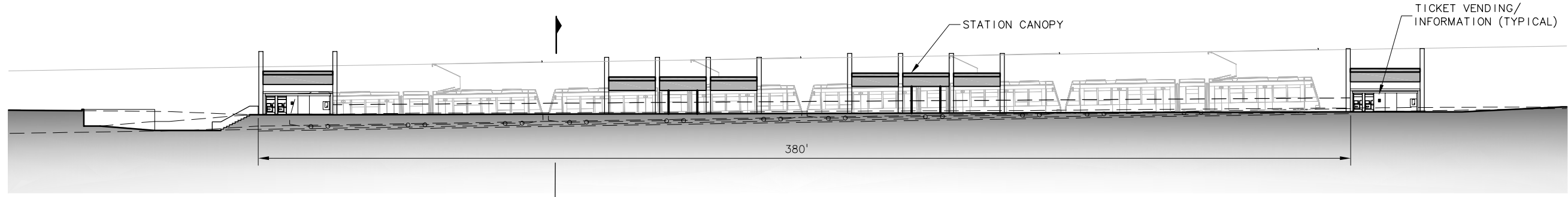
| | |
|---------------|-------------------|
| Scale: | 1"=50' |
| Filename: | ELE\RSER_AS01.dwg |
| Contract No.: | EL_SEG_E |
| Date: | |

**EAST LINK PROJECT
 SEGMENT E**

SE REDMOND STATION
 BNSF RETAINED CUT STATION
 STATION ACCESS PLAN

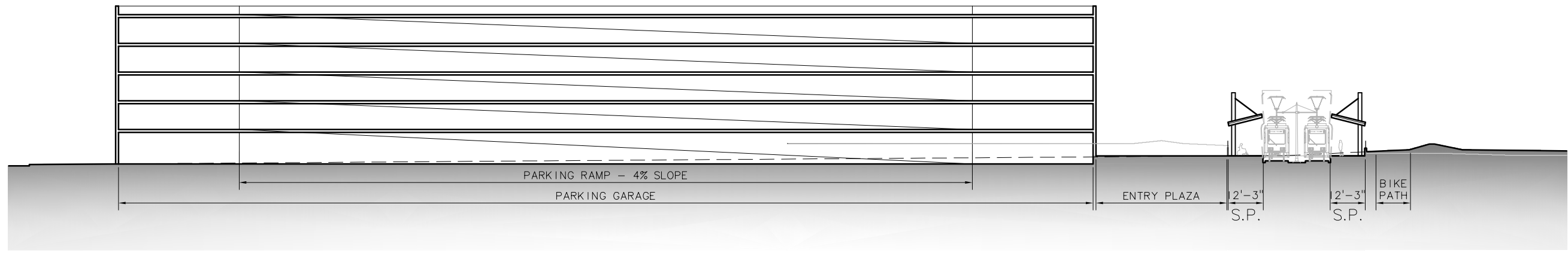
| | |
|--------------|-----------|
| Drawing No.: | RSER-AS01 |
| Sheet No.: | E-51 |
| Rev.: | |

XREF'S
 Resolved
 ELE_RSER1AX
 ELE_RSER1AE
 REG-DCON
 ZG-2234H
 Unresolved
 LTSCALE
 1=1

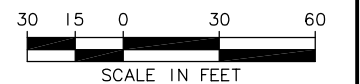


A
 RSER-AE01

STATION ELEVATION
 SCALE: 1" = 20'



STATION SECTION A
 SCALE: 1" = 30' RSER-AE01



c:\work\ELE\RSER_AE01.dwg
 10/16/08 11:34 : eackerm OE5396

| No. | Date | Dsn. | Chk. | App. | Revisions |
|-----|------|------|------|------|-----------|
| | | | | | |
| | | | | | |
| | | | | | |
| | | | | | |

Designed By:
 Drawn By:
 Checked By:
 Approved By:

FEIS
 CONCEPTUAL

CH2MHILL
 IN ASSOCIATION WITH
PARSONS & INCA
 ENGINEERS INC.

IBI GROUP

SOUNDTRANSIT

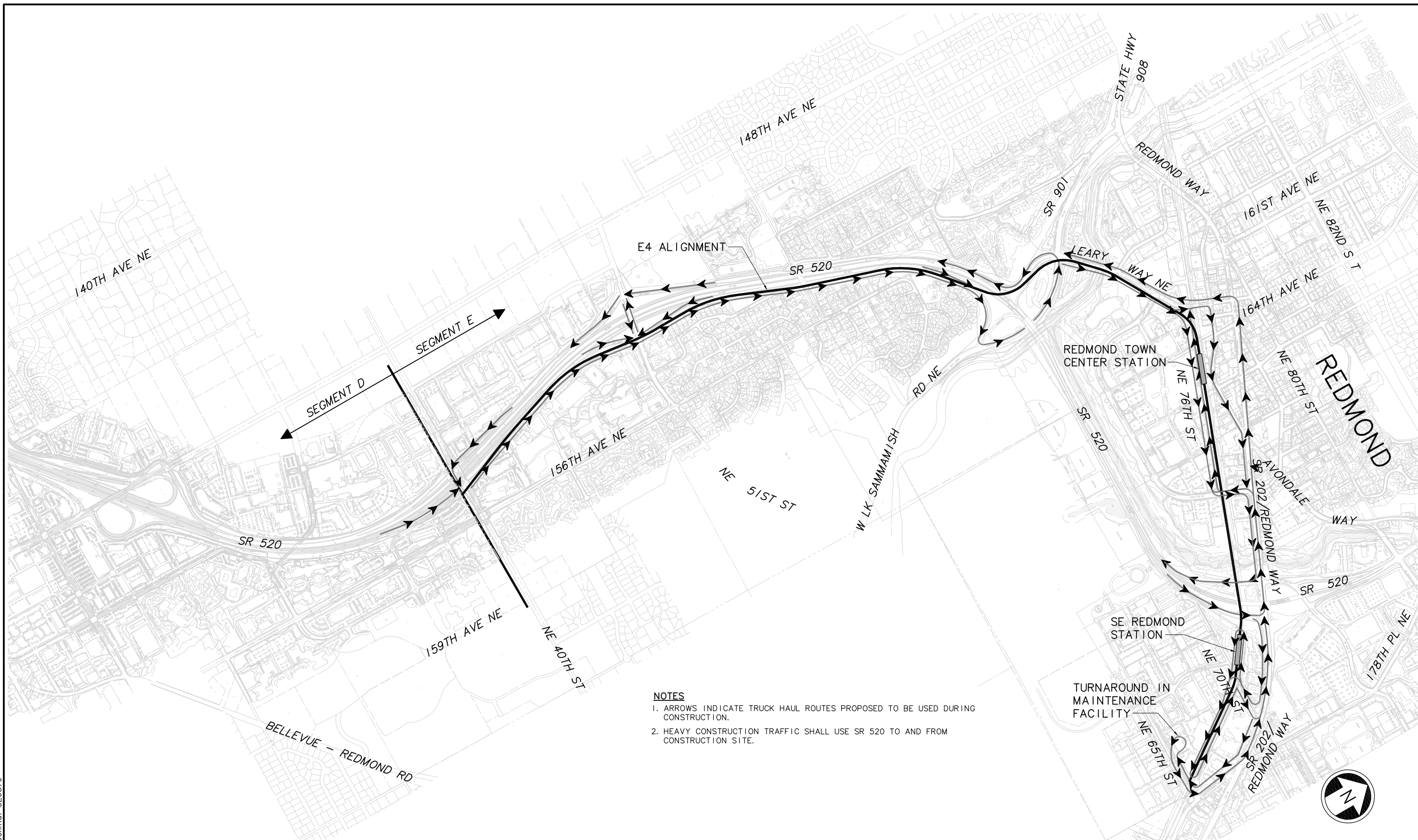
Scale: 1"=20'
 Filename: ELE\RSER_AE01.dwg
 Contract No.: EL_SEG_E
 Date:

**EAST LINK PROJECT
 SEGMENT E**
 SE REDMOND STATION
 BNSF RETAINED CUT STATION
 ELEVATION, SECTION



Drawing No.: RSER-AE01
 Sheet No.: E-1 J
 Rev.:

DWG INFO:
LTSKALE:
1=1
XREFs:
-Attach:
-Overlay:
ELE_IE4_CC01.dwg
26-2234H
x1434ef
x1437rx
x1437ef
x1734ef
x1737rx
x1737ef
x1740rx
x1740ef
x1743rx
x1743ef
x1746rx
x1746ef
x1749rx
x1749ef
x2037rx
x2037ef
x2040rx
x2040ef
x2043rx
x2043ef
x2046rx
x2046ef
x2049rx
x2049ef
x2052rx
x2052ef
x2346rx
x2346ef
x2349rx
x2349ef
x2352rx
x2352ef
x2646rx
x2646ef
x2649rx
x2649ef
x2652rx
x2652ef
-Unresolved:



NOTES
1. ARROWS INDICATE TRUCK HAUL ROUTES PROPOSED TO BE USED DURING CONSTRUCTION.
2. HEAVY CONSTRUCTION TRAFFIC SHALL USE SR 520 TO AND FROM CONSTRUCTION SITE.

c:\work\feis\ele_ie4_cc01.dwg
02/08/11 11:15 bolimaf OE6579

| | | | | | |
|-----|------|------|------|------|-----------|
| | | | | | |
| | | | | | |
| | | | | | |
| | | | | | |
| | | | | | |
| No. | Date | Dsn. | Chk. | App. | Revisions |

Designed By:
Drawn By:
Checked By:
Approved By:

FE IS CONCEPTUAL

CH2MHILL
IN ASSOCIATION WITH
PARSONS & INCA
ENGINEERS INC.

SOUNDTRANSIT

Submitted: Date: Approved: Date:

Scale: NTS
Filename: ELE_IE4_CC01.dwg
Contract No.:
Date: 07/30/10

LINK LIGHT RAIL PROJECT
EAST CORRIDOR
SEGMENT E
ALTERNATIVE E4
CONSTRUCTION TRUCK HAUL ROUTE PLAN

Drawing No.: E4--CC01
Sheet No.: Rev.:
E-60