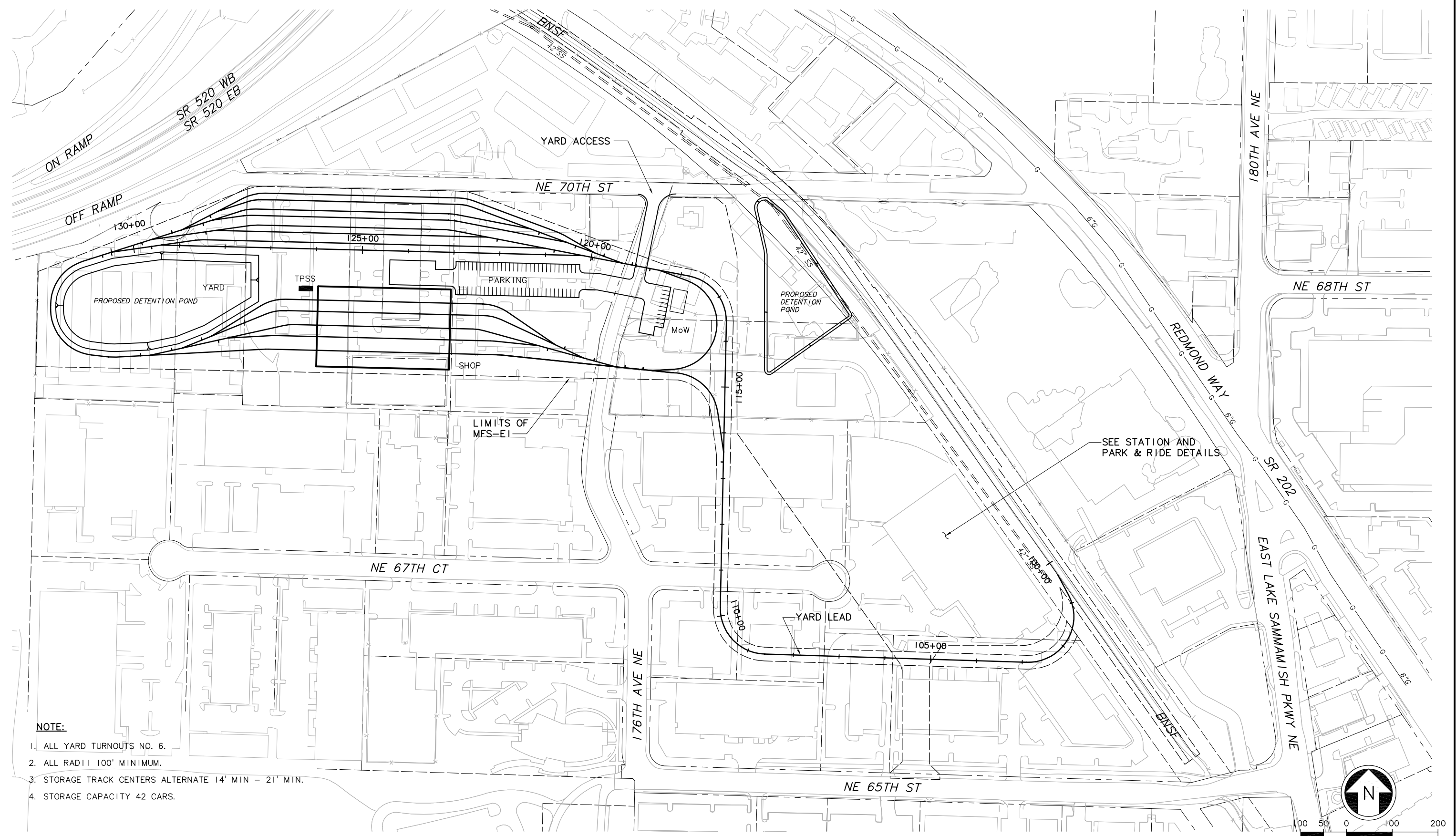


XREF'S
 Resolved
 x2346UT
 x2349UT
 x2646UT
 x2649UT
 ELE_EI_KA
 ELE_EI_MF
 ELE_EI_US
 REG-DCON
 Zg-2234h
 x2346rx
 x2346sf
 x2349rx
 x2349sf
 x2646rx
 x2646sf
 x2649rx
 x2649sf
 Unresolved
 key_East
 x2346cn
 x2349cn
 x2649cn
 LTSCALE
 1=1



- NOTE:**
1. ALL YARD TURNOUTS NO. 6.
 2. ALL RADII 100' MINIMUM.
 3. STORAGE TRACK CENTERS ALTERNATE 14' MIN - 21' MIN.
 4. STORAGE CAPACITY 42 CARS.

c:\work\ELEIEI\...MP01.dwg
 10/16/08 11:18: eackerm OE5396

No.	Date	Dsn.	Chk.	App.	Revisions

Designed By:
 Drawn By:
 Checked By:
 Approved By:

**FEIS
 CONCEPTUAL**

CH2MHILL
 IN ASSOCIATION WITH
PARSONS & INCA
 ENGINEERS INC.

Submitted: Date: Approved: Date:

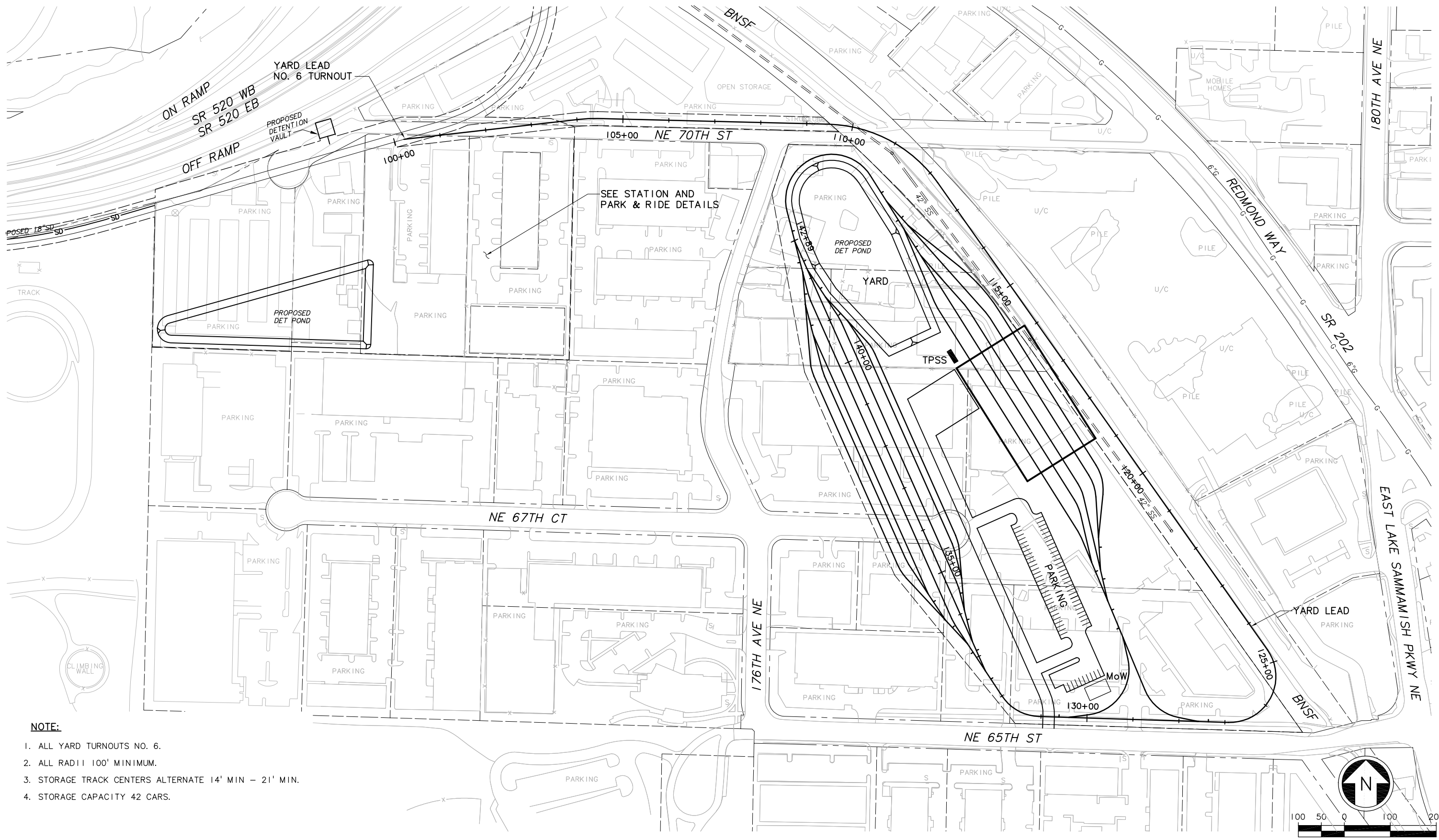
SOUNDTRANSIT

Scale: 1" = 100'
 Filename: ELEIEI_MP01.dwg
 Contract No.: EL_SEG_E
 Date:

**EAST LINK PROJECT
 SEGMENT E
 MAINTENANCE FACILITY
 MF5 - E1
 LAYOUT AND SITE PLAN**

Drawing No.: **E1-MP01**
 Sheet No.: Rev.:
E-63

XREF'S
 Resolved
 x2346UT
 x2349UT
 x2646UT
 x2649UT
 ELE_E2_KA
 ELE_E2_MF
 ELE_E2_US
 REG-DCON
 Zg-2234h
 x2346rx
 x2346sf
 x2349rx
 x2349sf
 x2646rx
 x2646sf
 x2649rx
 x2649sf
 Unresolved
 key_East
 x2346cn
 x2349cn
 x2649cn
 LTSCALE
 1=1



- NOTE:**
1. ALL YARD TURNOUTS NO. 6.
 2. ALL RADIUS 100' MINIMUM.
 3. STORAGE TRACK CENTERS ALTERNATE 14' MIN - 21' MIN.
 4. STORAGE CAPACITY 42 CARS.

c:\work\ELEIE2_MPO1.dwg
 10/16/08 11:25 : eackerm OE5396

No.	Date	Dsn.	Chk.	App.	Revisions

Designed By:
 Drawn By:
 Checked By:
 Approved By:

**FEIS
 CONCEPTUAL**

CH2MHILL
 IN ASSOCIATION WITH
PARSONS & INCA
 ENGINEERS INC.

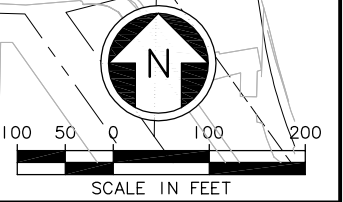
Submitted: Date:
 Approved: Date:

SOUNDTRANSIT

Scale: 1" = 100'
 Filename: ELEIE2_MPO1.dwg
 Contract No.: EL_SEG_E
 Date:

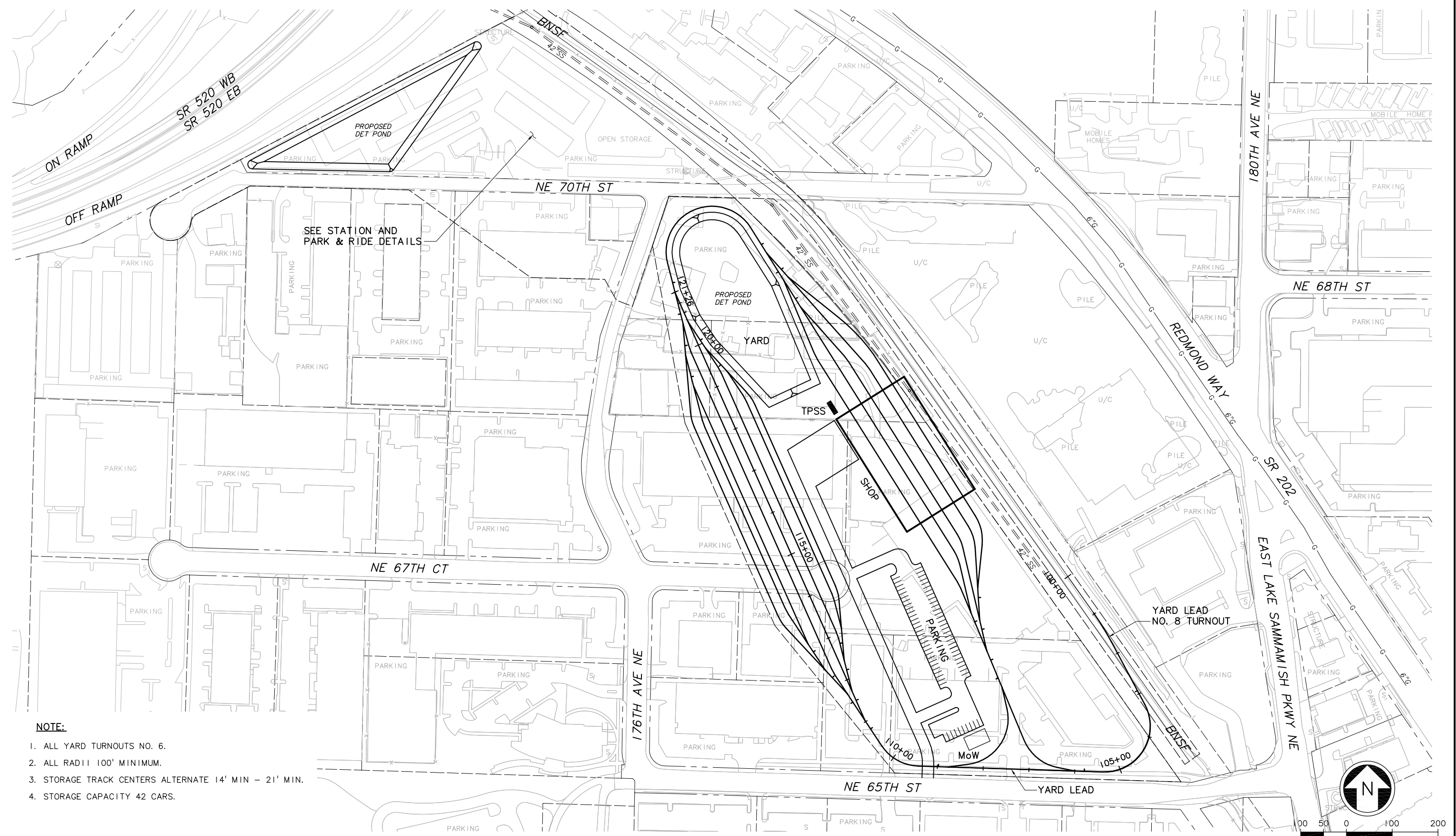
**EAST LINK PROJECT
 SEGMENT E
 MAINTENANCE FACILITY
 MF5 - E2
 LAYOUT AND SITE PLAN**

Drawing No.: **E2-MPO1**
 Sheet No.: Rev.:
E-64



XREF'S
 Resolved
 x2346UT
 x2349UT
 x2646UT
 x2649UT
 ELE_E4_KA
 ELE_E4_MF
 ELE_E4_US
 REG-DCON
 Zg-2234h
 x2346rx
 x2346sf
 x2349rx
 x2349sf
 x2646rx
 x2646sf
 x2649rx
 x2649sf
 Unresolved
 key_East
 x2346cn
 x2349cn
 x2649cn

LTSCALE
 1=1



- NOTE:**
1. ALL YARD TURNOUTS NO. 6.
 2. ALL RADII 100' MINIMUM.
 3. STORAGE TRACK CENTERS ALTERNATE 14' MIN - 21' MIN.
 4. STORAGE CAPACITY 42 CARS.

c:\work\ELEIE4_MPO1.dwg
 10/16/08 11:30 : eackerm OE5396

No.	Date	Dsn.	Chk.	App.	Revisions

Designed By:
 Drawn By:
 Checked By:
 Approved By:

**FEIS
 CONCEPTUAL**

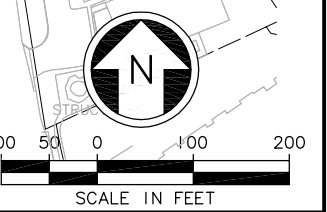
CH2MHILL
 IN ASSOCIATION WITH
PARSONS & INCA
 ENGINEERS INC.

Submitted: Date: Approved: Date:

SOUNDTRANSIT

Scale: 1" = 100'
 Filename: ELEIE4_MPO1.dwg
 Contract No.: EL_SEG_E
 Date:

**EAST LINK PROJECT
 SEGMENT E
 MAINTENANCE FACILITY
 MF5 - E4
 LAYOUT AND SITE PLAN**



Drawing No.: **E4_-MP01**
 Sheet No.: Rev.:
E-65