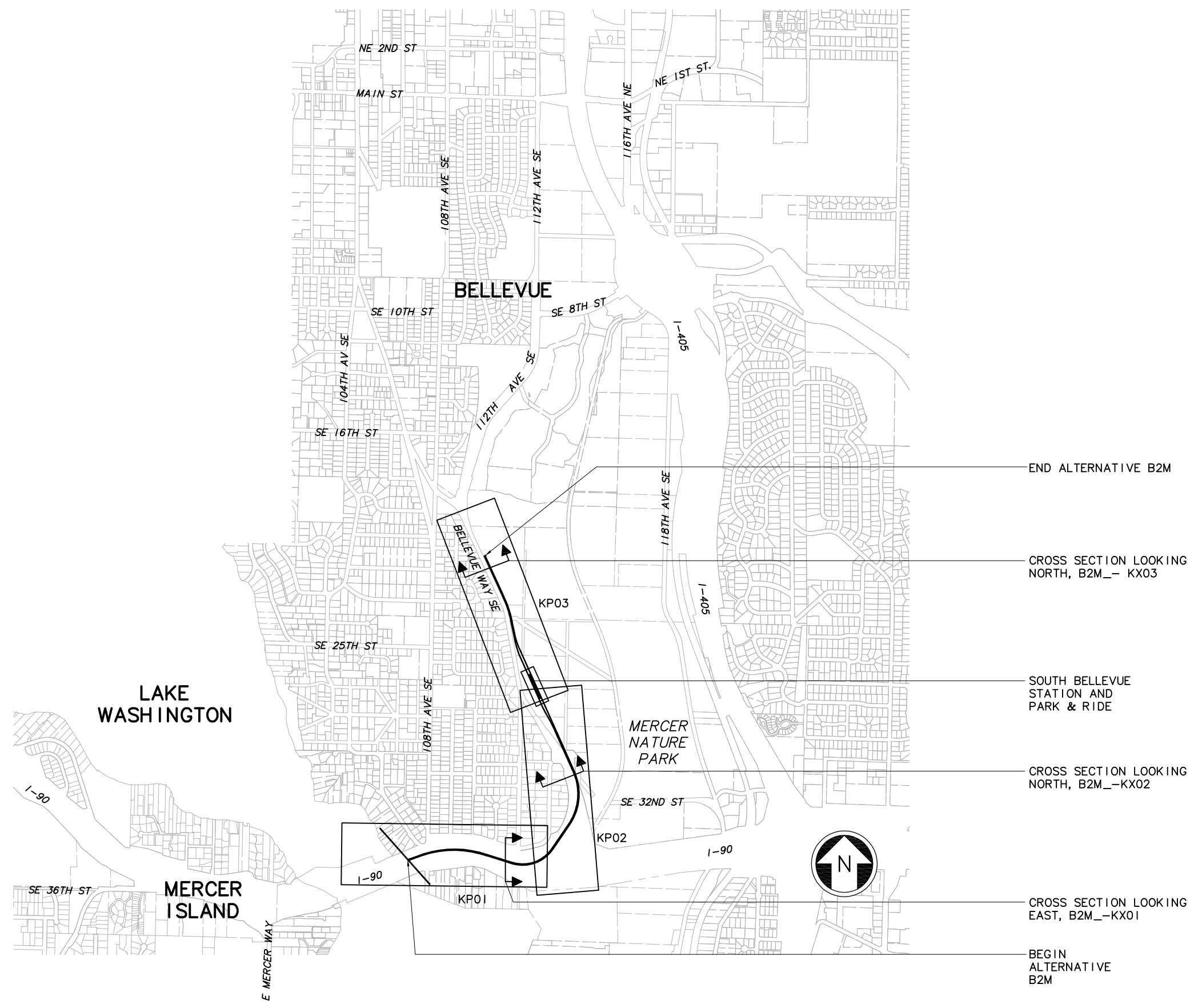


DWG INFO:
 LTSCALE:
 1=1
 XREFs:
 -Attach:
 -Overlay:
 ELB_L65_KA-100
 SUB-SDE 15
 ZC-2234H
 x0216rx
 x0219rx
 x0222rx
 x0225rx
 x0228rx
 x0516rx
 x0519rx
 x0522rx
 x0525rx
 x0528rx
 x0816rx
 x0819rx
 x0822rx
 x0825rx
 x0828rx
 x9316rx
 x9319rx
 x9322rx
 x9616rx
 x9619rx
 x9916rx
 x9919rx
 -Unresolved:
 key_Segment



c:\work\sdeis\ELB_IB2M_GZ05.dwg
 10/04/10 13:10 : bolimaf OE6579

No.	Date	Dsn.	Chk.	App.	Revisions

Designed By:
 Drawn By:
 Checked By:
 Approved By:

FEIS CONCEPTUAL

CH2MHILL

Submitted: _____ Date: _____ Approved: _____

INCA ENGINEERS INC.

BOLIMA DRAFTING & DESIGN INC.


Date: _____ Approved: _____

SOUNDTRANSIT

Date: _____

Scale: NTS
 Filename: ELB_IB2M_GZ05.dwg
 Contract No.:
 Date: 07/30/10

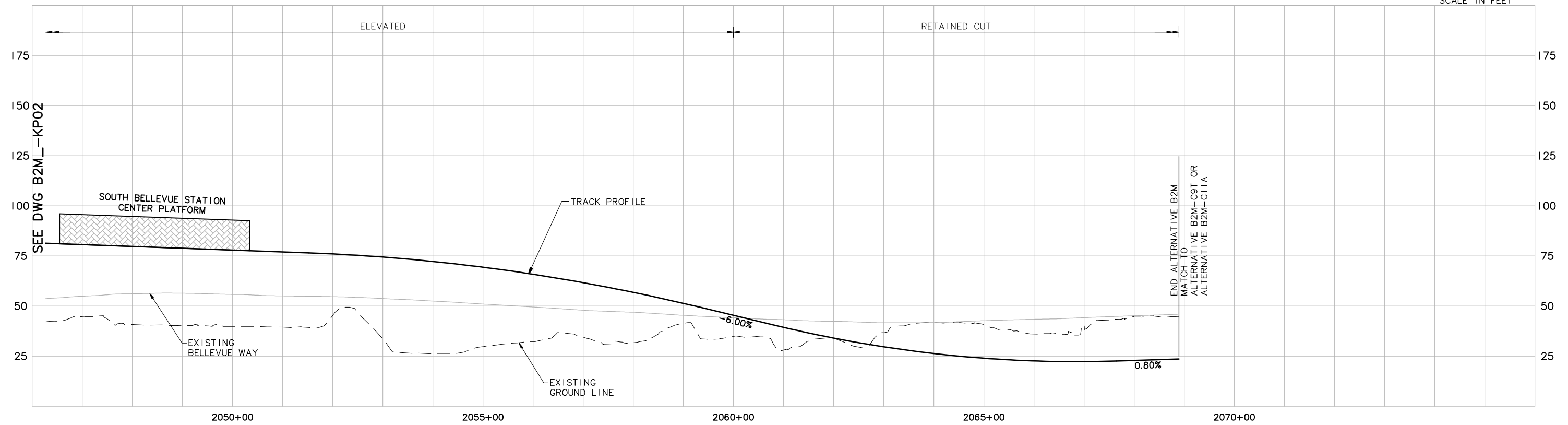
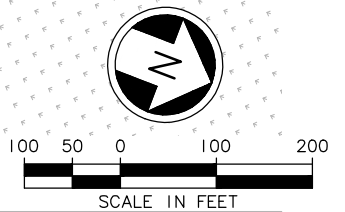
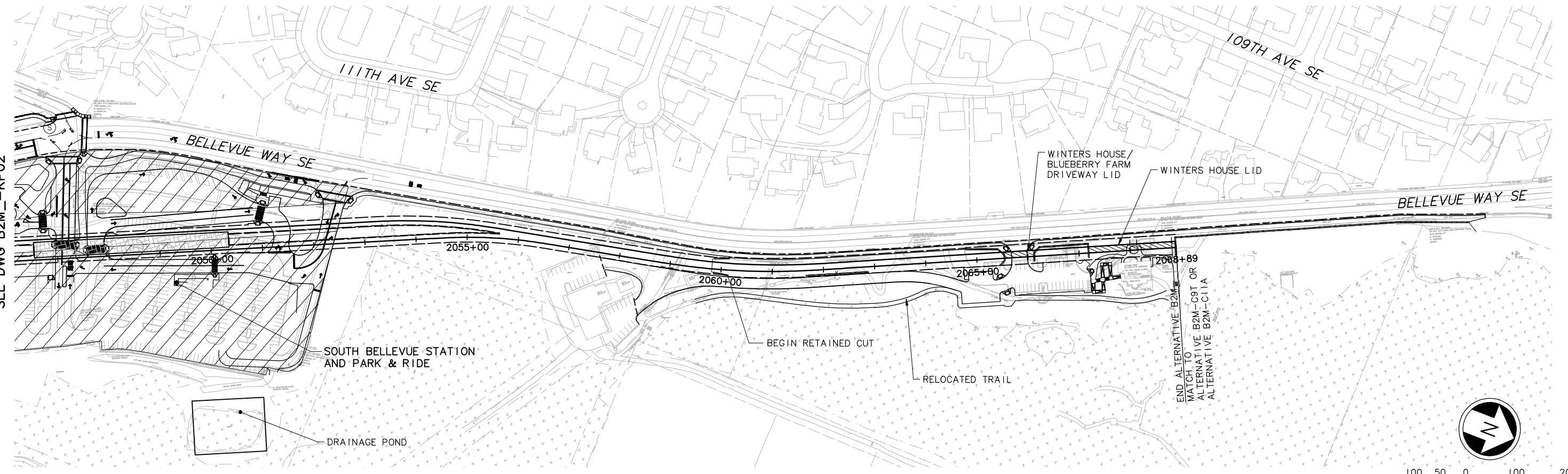
LINK LIGHT RAIL PROJECT
EAST CORRIDOR
 SEGMENT B - ALT B2M (PREFERRED)
 KEY PLAN

Scale: 

Drawing No.: B2M_-GZ05
 Sheet No.: B-2
 Rev.: _____

DWG. INFO:
 L1SCALE:
 1"=1'
 XREFs:
 -Attach:
 z9-234h
 z9-g10010
 -Overlay:
 ELB_L165_CA-100
 ELB_L165_CM-100
 ELB_L165_JO-100
 ELB_L165_KA-100
 x0219rx
 x0219sf
 x0222rx
 x0222sf
 x0519rx
 x0519sf
 x0522rx
 x0522sf
 -Unresolved:
 ELB_L165_US 2
 key_East

SEE DWG B2M_KP02



c:\work\feis\segment_b\2m\ELB_IB2M_KP03.dwg
 04/14/11 09:34 : khuum 065585

No.	Date	Dsn.	Chk.	App.	Revisions

Designed By:
 Drawn By:
 Checked By:
 Approved By:

FEIS CONCEPTUAL

CH2MHILL

INCA
 ENGINEERING INC.

BOLIMA
 DRAFTING & DESIGN INC.

SOUNDTRANSIT

Scale:
 H: 1"=100'; V: 1"=25'
 Filename:
 ELB_IB2M_KP03.dwg
 Contract No.:

LINK LIGHT RAIL PROJECT
 EAST CORRIDOR
 SEGMENT B - ALT B2M (PREFERRED)
 TRACK PLAN & PROFILE

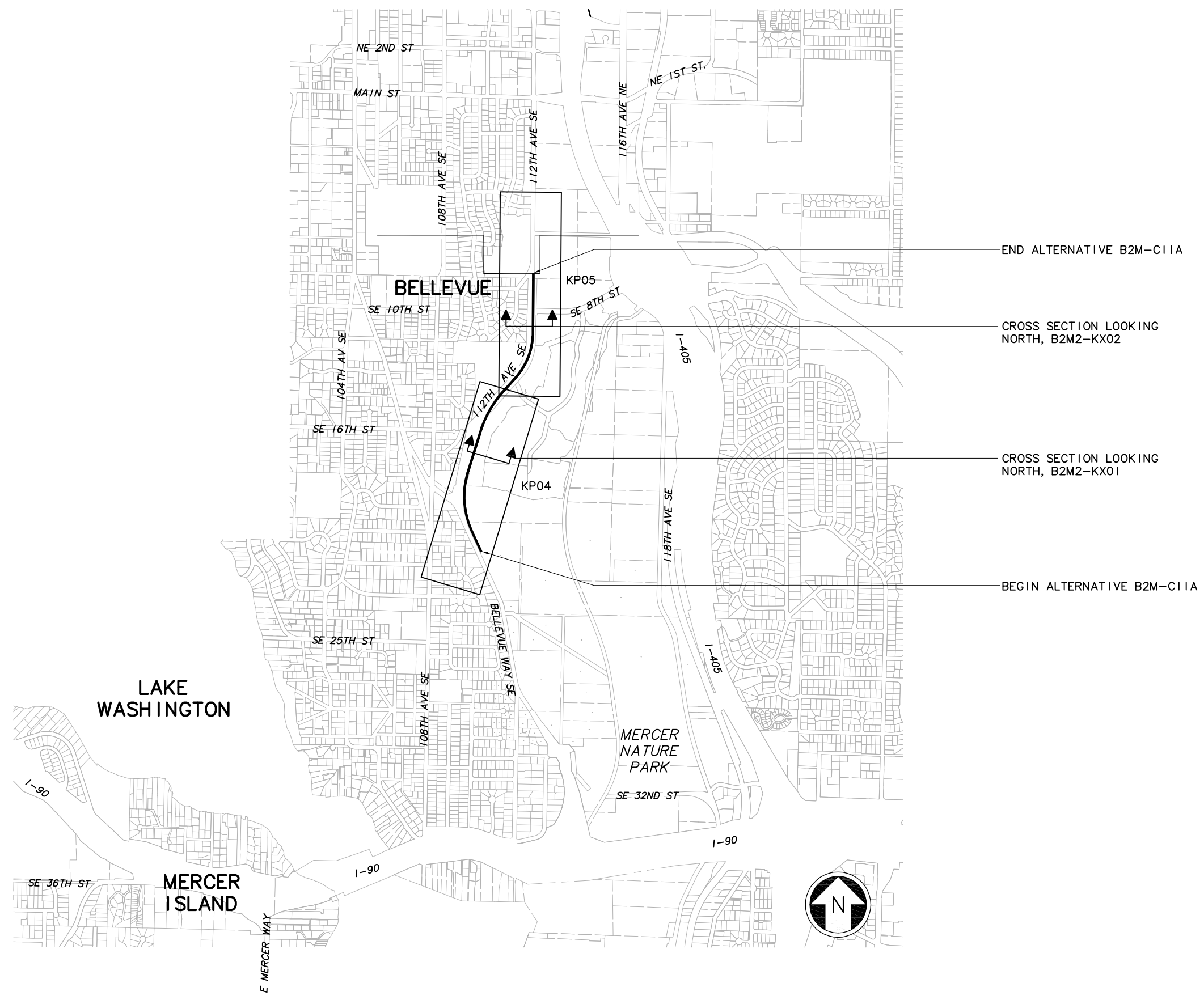
07/30/10

Drawing No.:
B2M_KP03

Sheet No.:
B-6

Rev.:

DWG INFO:
 LTSCALE:
 1=1
 XREFs:
 -Attach:
 -Overlay:
 ELB_C11A_B2C_KA-100
 SUB-SDE 15
 ZC-2234H
 x0216rx
 x0219rx
 x0222rx
 x0225rx
 x0228rx
 x0516rx
 x0519rx
 x0522rx
 x0525rx
 x0528rx
 x0816rx
 x0819rx
 x0822rx
 x0825rx
 x0828rx
 x9316rx
 x9319rx
 x9322rx
 x9616rx
 x9619rx
 x9916rx
 x9919rx
 -Unresolved:
 key_Segment



c:\work\sdeis\ELB_3B2M2GZ05.dwg
 10/04/10 13:20 : bolimaf OE6579

No.	Date	Dsn.	Chk.	App.	Revisions

Designed By:
 Drawn By:
 Checked By:
 Approved By:

FEIS CONCEPTUAL

CH2MHILL

Submitted: _____ Date: _____ Approved: _____

INCA ENGINEERS INC.

BOLIMA DRAFTING & DESIGN INC.

Date: _____ Approved: _____

SOUNDTRANSIT

Date: _____

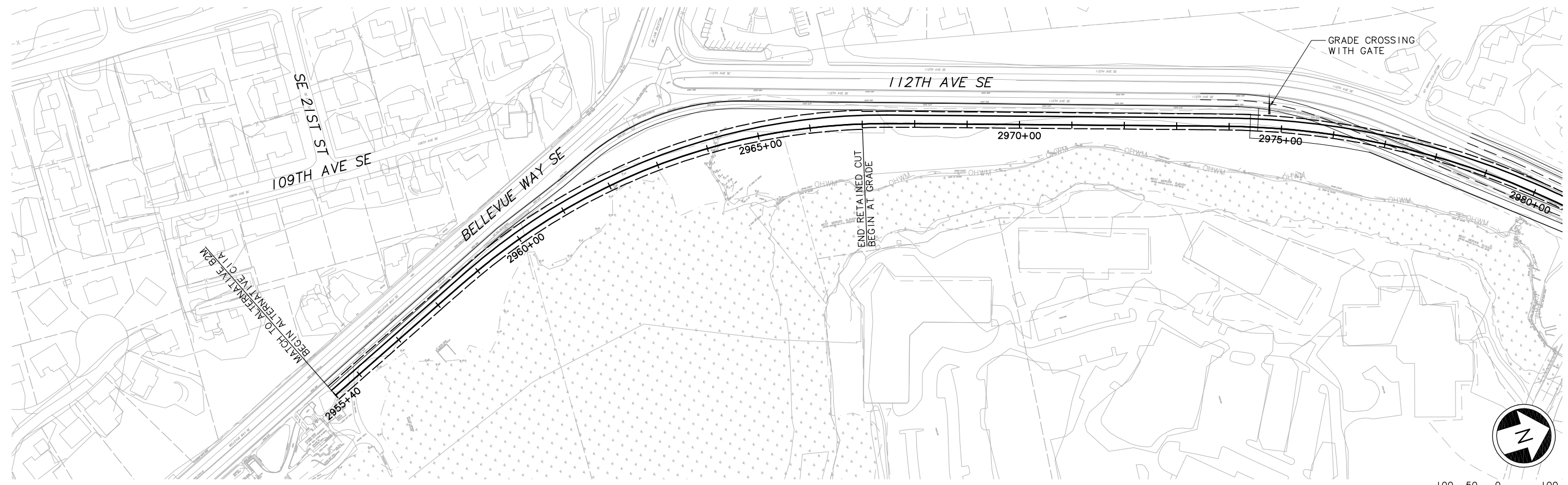
Scale: NTS
 Filename: ELB_3B2M2GZ05.dwg
 Contract No.:
 Date: 07/30/10

LINK LIGHT RAIL PROJECT
EAST CORRIDOR
 SEGMENT B - ALT B2M-C11A (PREFERRED)
KEY PLAN

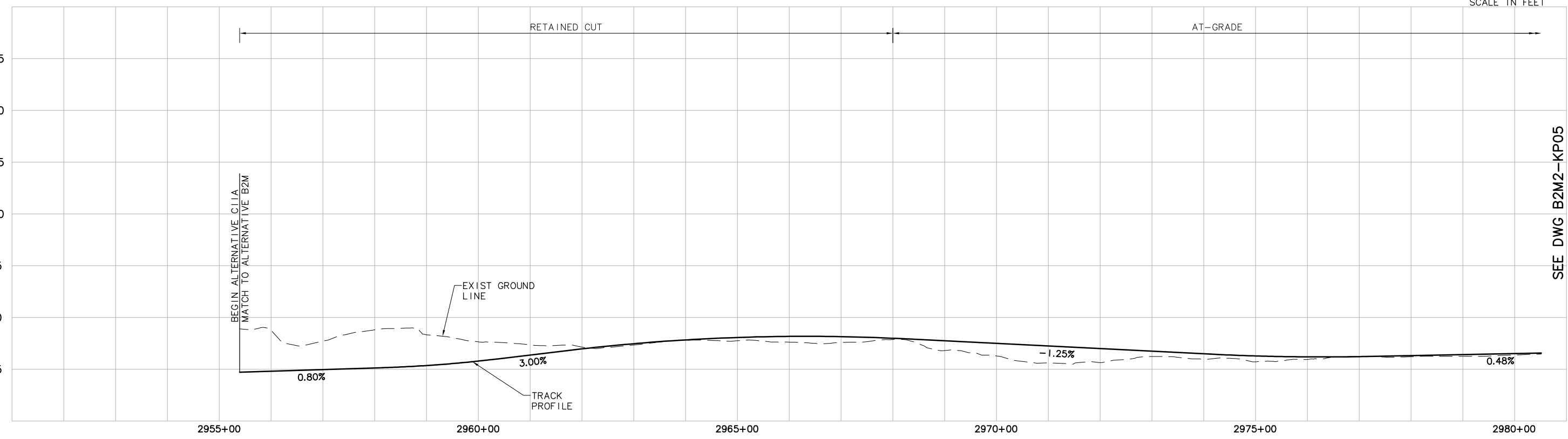
THIS PRINT REPRESENTS HALF SCALE

Drawing No.: B2M2-GZ05
 Sheet No.: B-7
 Rev.:

DWG INFO:
 L1SCALE:
 1=1
 XREFS:
 -Attach:
 zg-2234h
 zg-g 10010
 -Dwg:
 ELC_C11A_B2C
 SLB-SDE1S
 x0216rf
 x0216sf
 x0219rf
 x0219sf
 x0222rf
 x0222sf
 x0225rf
 x0225sf
 x0228rf
 x0228sf
 x0516rf
 x0516sf
 x0519rf
 x0519sf
 x0522rf
 x0522sf
 x0525rf
 x0525sf
 -Unresolved:
 key_East



SEE DWG B2M2-KP05



SEE DWG B2M2-KP05

c:\work\sde1s\ELB_3B2M2KP04.DWG
 10/04/10 1:3:20 : bolimaf OE6579

Designed By:	
Drawn By:	
Checked By:	
Approved By:	

FEIS
 CONCEPTUAL



Scale:
 H: 1"=100'; V: 1"=25'
 Filename:
 ELB_3B2M2KP04.DWG
 Contract No.:

LINK LIGHT RAIL PROJECT
 EAST CORRIDOR
 SEGMENT B - ALT B2M-C11A (PREFERRED)
 TRACK PLAN & PROFILE

Drawing No.:
B2M2-KP04
 Sheet No.:
B-8
 Rev.:

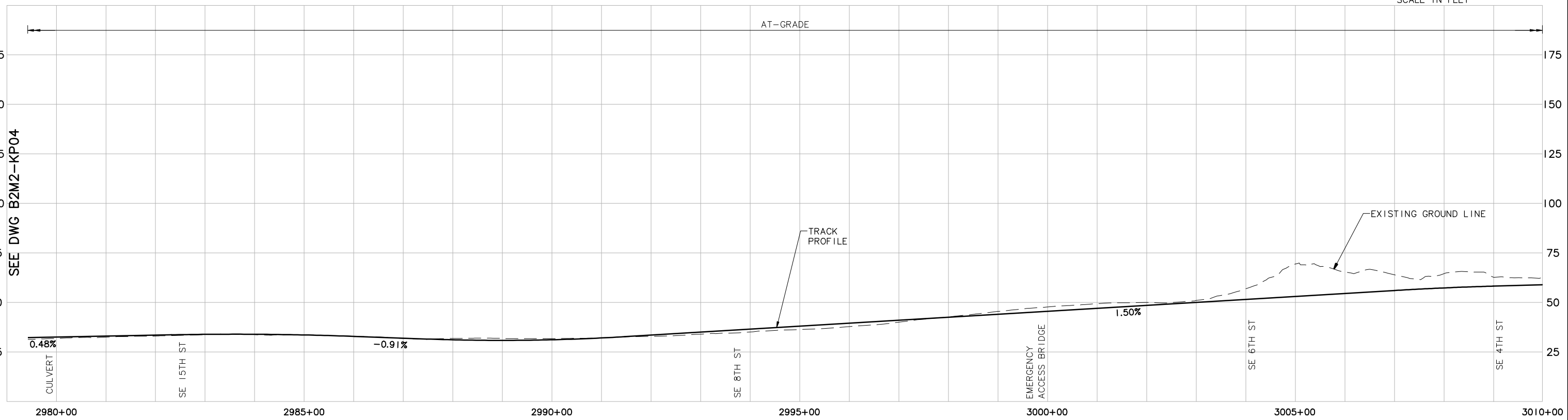
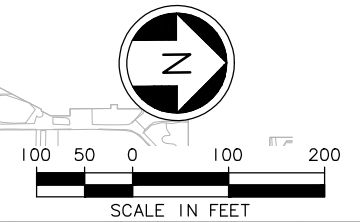
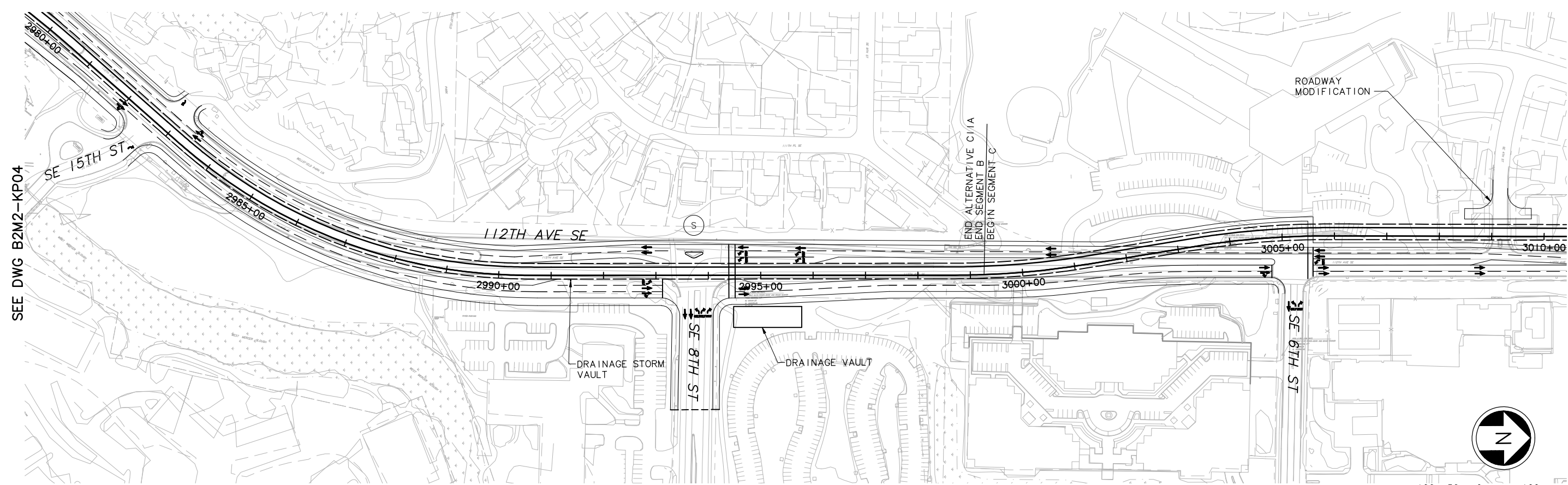
No.	Date	Dsn.	Chk.	App.	Revisions

Submitted: _____ Date: _____ Approved: _____ Date: _____

Date: 07/30/10



DWG. INFO:
 LTSCALE:
 1=1
 XREFs:
 -Attach:
 z9-234h
 z9-g10010
 -Overlay:
 ELC_C11A_B2C_A-100
 x0219rx
 x0219sf
 x0222rx
 x0222sf
 x0225rx
 x0225sf
 x0516rx
 x0516sf
 x0519rx
 x0519sf
 x0522rx
 x0522sf
 x0525rx
 x0525sf
 -Unresolved:



c:\work\feis\segment_b\2m-c11a\ELB_3B2M2KP05.dwg
 04/18/11 14:54 : khuum_0E6585

No.	Date	Dsn.	Chk.	App.	Revisions

Designed By:
 Drawn By:
 Checked By:
 Approved By:

FEIS
 CONCEPTUAL

CH2MHILL

INCA
 ENGINEERING INC.

BOLIMA
 DRAFTING & DESIGN INC.

SOUNDTRANSIT

Scale:
 H: 1"=100'; V: 1"=25'
 Filename:
 ELB_3B2M2KP05.dwg
 Contract No.:

LINK LIGHT RAIL PROJECT
 EAST CORRIDOR
 SEGMENT B - ALT B2M-C11A (PREFERRED)
 TRACK PLAN & PROFILE



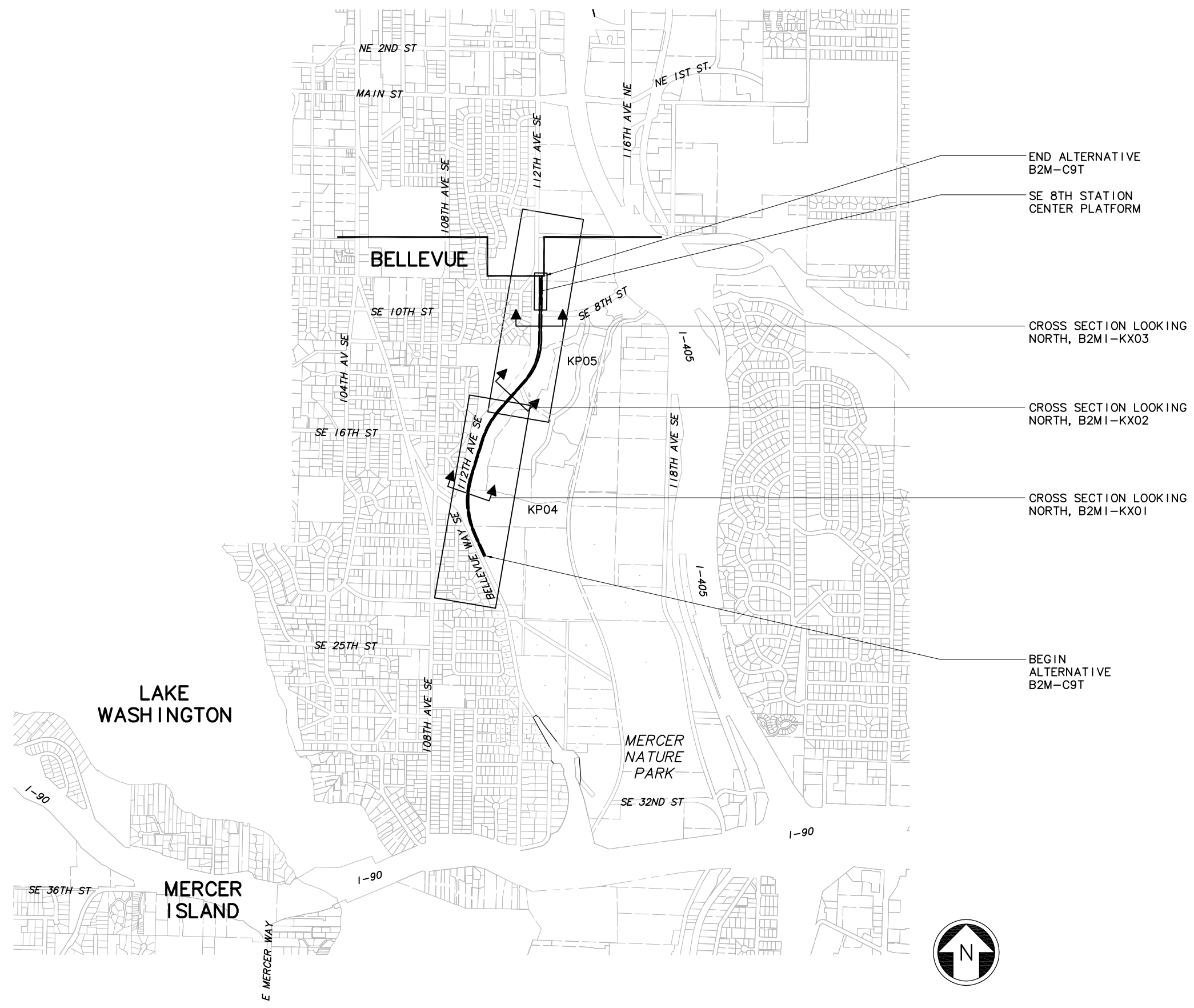
Drawing No.:
B2M2-KP05

Sheet No.:
B-9

Rev.:

Submitted: Date: Approved: Date: Date: 07/30/10

DWG INFO:
 L1SCALE:
 1=1
 XREFs:
 -Attach:
 -Overlay:
 ELB_C9T_MAIN_A-100
 SUB-SDE15
 ZC-2234H
 x0216rx
 x0219rx
 x0222rx
 x0225rx
 x0228rx
 x0516rx
 x0519rx
 x0522rx
 x0525rx
 x0528rx
 x0816rx
 x0819rx
 x0822rx
 x0825rx
 x0828rx
 x9316rx
 x9319rx
 x9322rx
 x9616rx
 x9619rx
 x9916rx
 x9919rx
 -Unresolved:
 key_Segment



END ALTERNATIVE
B2M-C9T

SE 8TH STATION
CENTER PLATFORM

CROSS SECTION LOOKING
NORTH, B2M1-KX03

CROSS SECTION LOOKING
NORTH, B2M1-KX02

CROSS SECTION LOOKING
NORTH, B2M1-KX01

BEGIN
ALTERNATIVE
B2M-C9T

c:\work\sdeis\ELB_2B2M\GZ05.dwg
 10/04/10 13:14 : bolimaf 0E6579

No.	Date	Dsn.	Chk.	App.	Revisions

Designed By:
 Drawn By:
 Checked By:
 Approved By:

**FEIS
CONCEPTUAL**

CH2MHILL

Submitted: _____ Date: _____ Approved: _____

**INCA
ENGINEERS INC.**

**BOLIMA
DRAFTING & DESIGN INC.**

Date: _____ Approved: _____


SOUNDTRANSIT


Date: _____

Scale: NTS
 Filename: ELB_2B2M\GZ05.dwg
 Contract No.:
 Date: 07/30/10

**LINK LIGHT RAIL PROJECT
EAST CORRIDOR
SEGMENT B - ALT B2M-C9T (PREFERRED)**

KEY PLAN

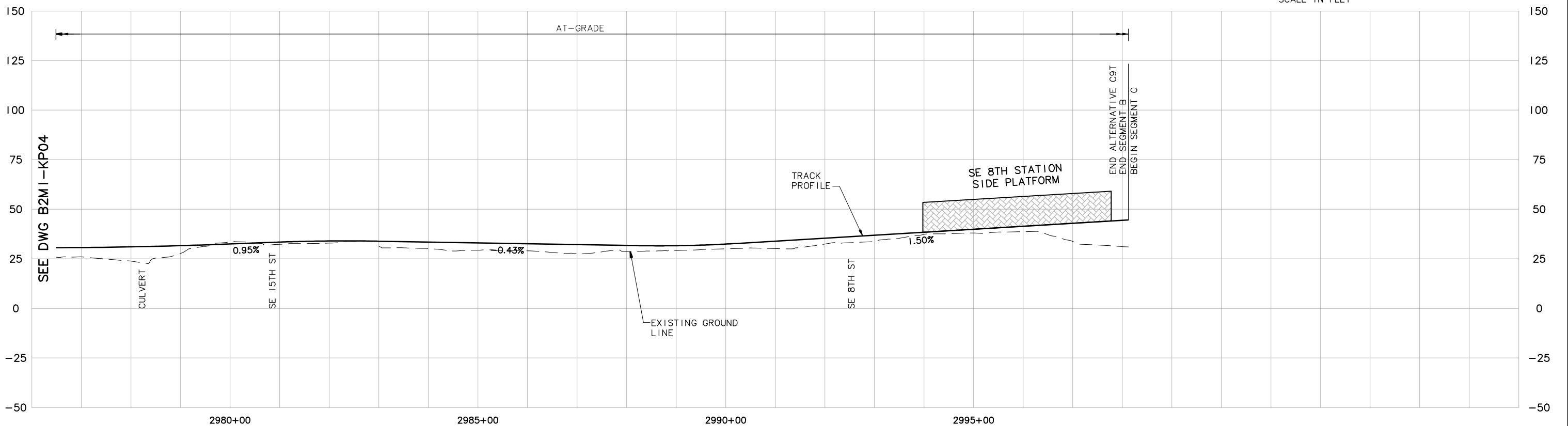
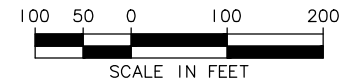
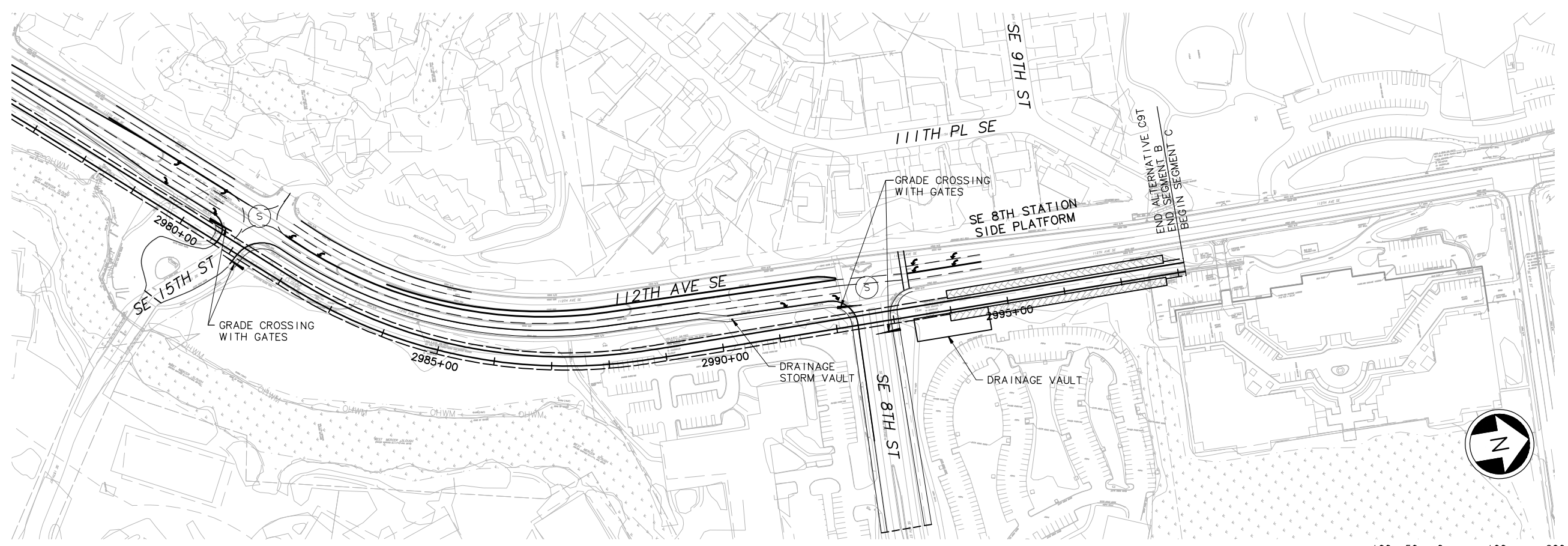




Drawing No.: B2M1-GZ05
 Sheet No.: B-10
 Rev.:

DWG INFO:
 L1SCALE:
 1=1
 XREFs:
 -Attach:
 z9-234h
 z9-g10010
 -Overlay:
 ELC_C9T_MAI-AA-100
 SUB-FE1S
 x0216rx
 x0216sf
 x0219rx
 x0219sf
 x0222rx
 x0222sf
 x0516rx
 x0516sf
 x0519rx
 x0519sf
 x0522rx
 x0522sf
 x0525rx
 x0525sf
 -Unresolved:

SEE DWG B2MI-KP04



c:\work\feis\segment_b\2m-c9t\ELB_2B2MIKP05.dwg
 04/18/11 15:55 : khuum 0E6585

No.	Date	Dsn.	Chk.	App.	Revisions

Designed By:
 Drawn By:
 Checked By:
 Approved By:

FEIS
 CONCEPTUAL

CH2MHILL

INCA
 ENGINEERING INC.

BOLIMA
 DRAFTING & DESIGN INC.

SOUNDTRANSIT

Scale:
 H: 1"=100'; V: 1"=25'
 Filename:
 ELB_2B2MIKP05.dwg
 Contract No.:

LINK LIGHT RAIL PROJECT
 EAST CORRIDOR
 SEGMENT B - ALT B2M (PREFERRED)
 TRACK PLAN & PROFILE

07/30/10

Drawing No.:
B2MI-KP05

Sheet No.:
B-12

Rev.: