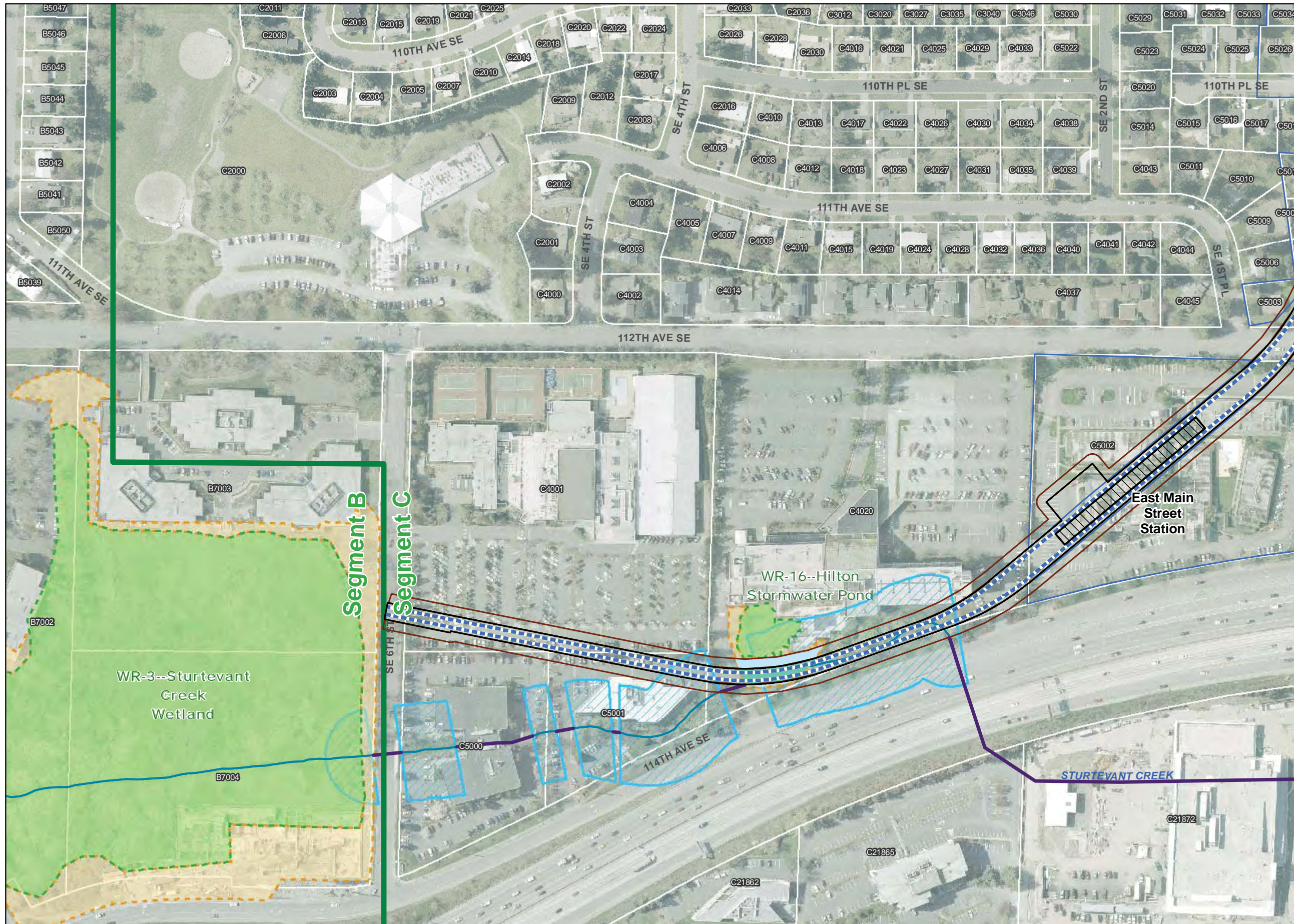


Exhibit F-42
Wetland, Wetland Buffer, and Wetland Mitigation Impacts
Alternative C11A from B3
East Link Project



- At-Grade Route
- Elevated Route
- Retained-Cut Route
- Retained-Fill Route
- Tunnel Route
- Operational Footprint**
- ROW
- Park and Ride
- Construction Footprint**
- Construction Footprint
- Staging Area
- Station
- Maintenance Facility
- Wetland
- Wetland Buffer
- Wetland Mitigation Site (WSDOT)
- Operational Wetland Impact
- Construction Wetland Impact
- Operational Wetland Buffer Impact
- Construction Wetland Buffer Impact
- Wetland Mitigation Impact
- Stream Buffer
- Open Channel
- Piped Stream
- Parcel with MapID

Aerial Photo: Sound Transit (2009)

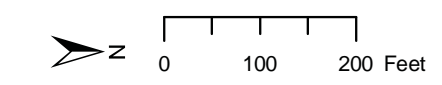
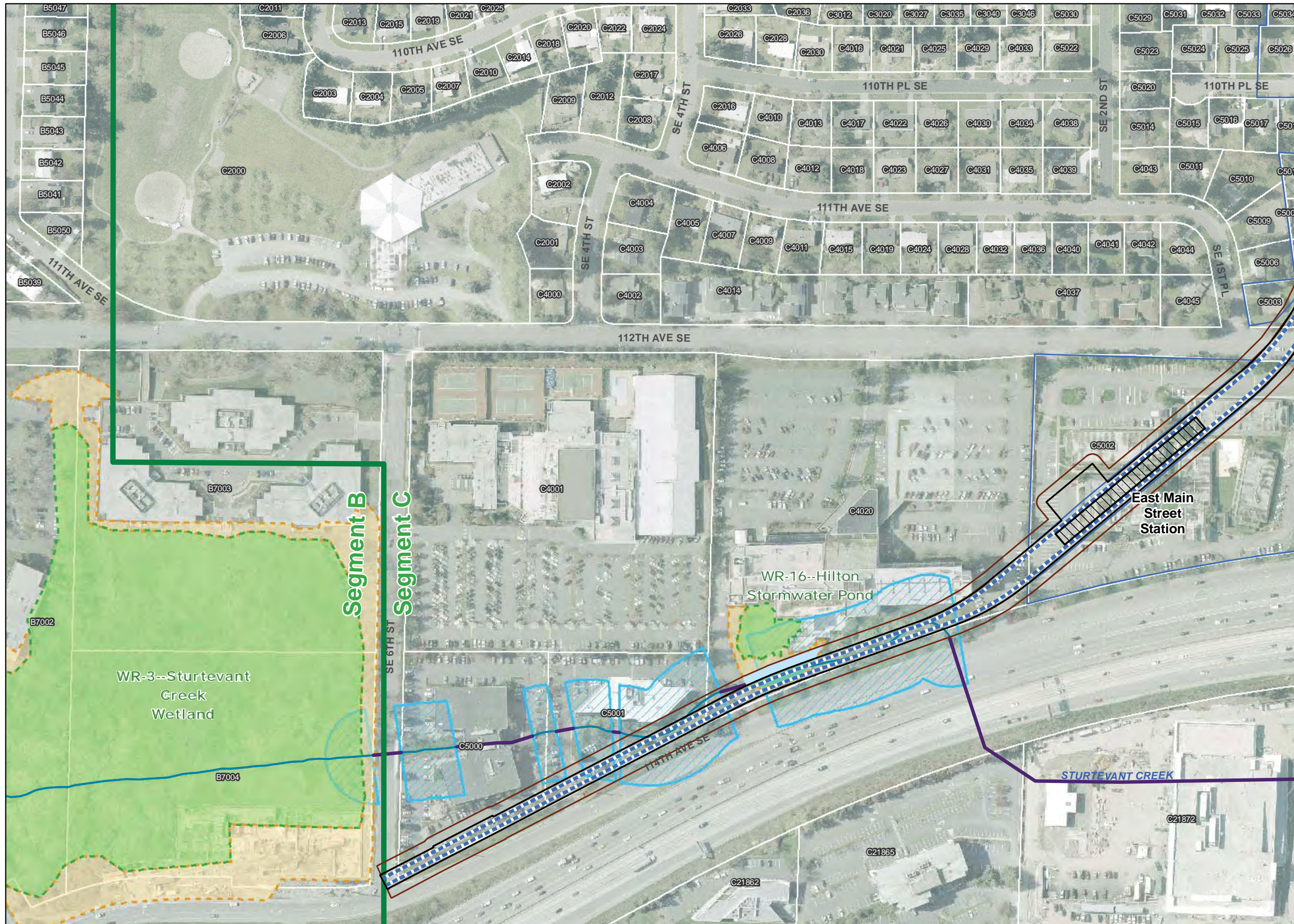


Exhibit F-43
Wetland, Wetland Buffer, and Wetland Mitigation Impacts
Alternative C11A from B3
Design Option/B7
East Link Project



- At-Grade Route
- - - Elevated Route
- · · Retained-Cut Route
- · · Retained-Fill Route
- - - Tunnel Route
- Operational Footprint**
- ROW
- Park and Ride
- Construction Footprint**
- Construction Footprint
- Staging Area
- Station
- Maintenance Facility
- Wetland
- Wetland Buffer
- Wetland Mitigation Site (WSDOT)
- Operational Wetland Impact
- Construction Wetland Impact
- Operational Wetland Buffer Impact
- Construction Wetland Buffer Impact
- Wetland Mitigation Impact
- Stream Buffer
- Open Channel
- Piped Stream
- Parcel with MapID

Aerial Photo: Sound Transit (2009)

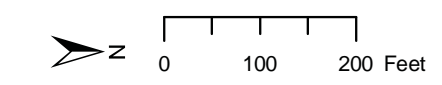
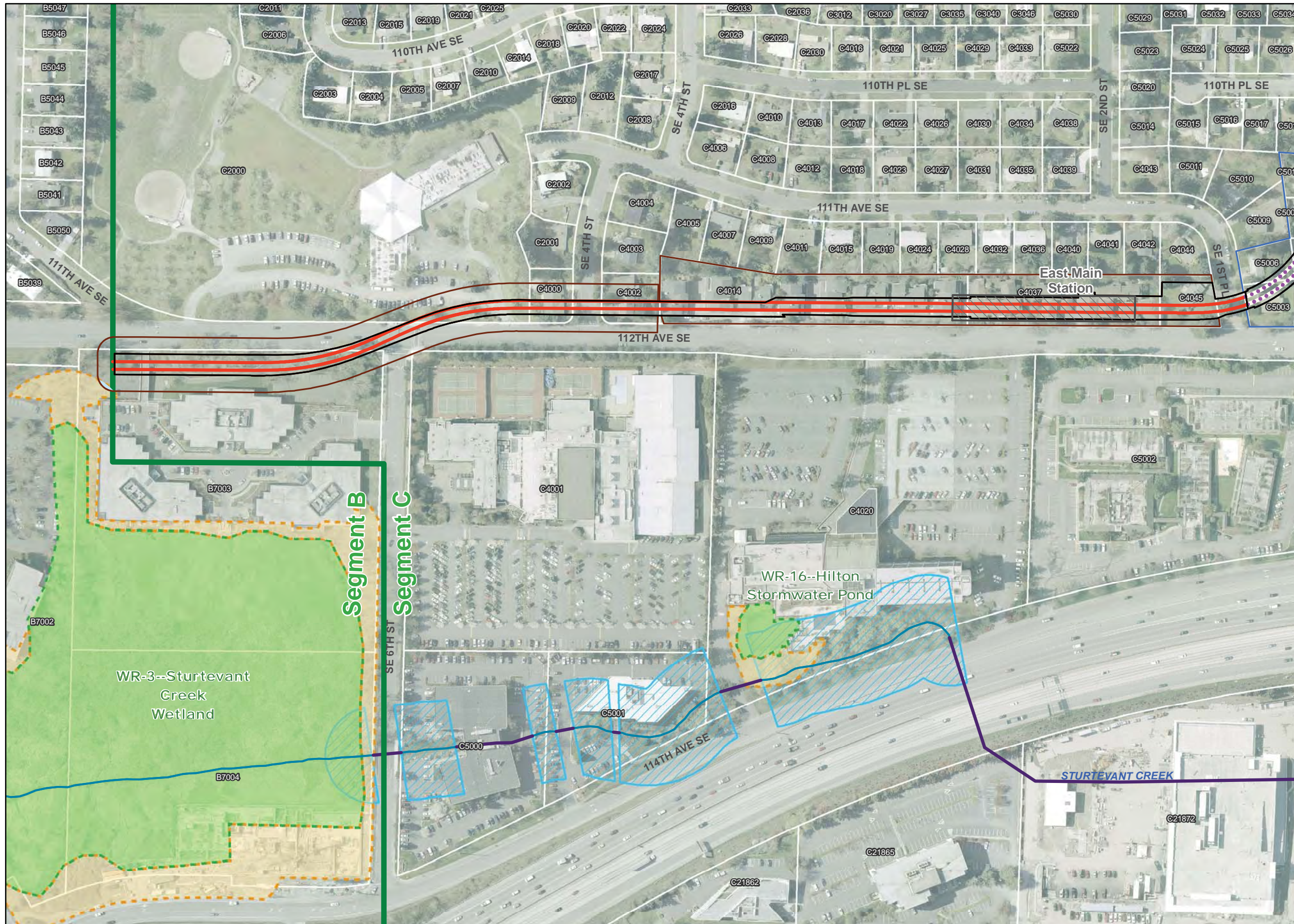


Exhibit F-44
Wetland, Wetland Buffer, and Wetland Mitigation Impacts
Alternative C9T from B2M
East Link Project



- At-Grade Route
- - - Elevated Route
- Retained-Cut Route
- Retained-Fill Route
- - - Tunnel Route
- Operational Footprint**
- ▭ ROW
- ▭ Park and Ride
- Construction Footprint**
- ▭ Construction Footprint
- ▭ Staging Area
- ▭ Station
- ▭ Maintenance Facility
- ▭ Wetland
- ▭ Wetland Buffer
- ▭ Wetland Mitigation Site (WSDOT)
- ▭ Operational Wetland Impact
- ▭ Construction Wetland Impact
- ▭ Operational Wetland Buffer Impact
- ▭ Construction Wetland Buffer Impact
- ▭ Wetland Mitigation Impact
- ▭ Stream Buffer
- ▭ Open Channel
- ▭ Piped Stream
- ▭ Parcel with MapID

Aerial Photo: Sound Transit (2009)

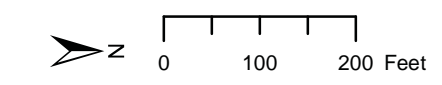
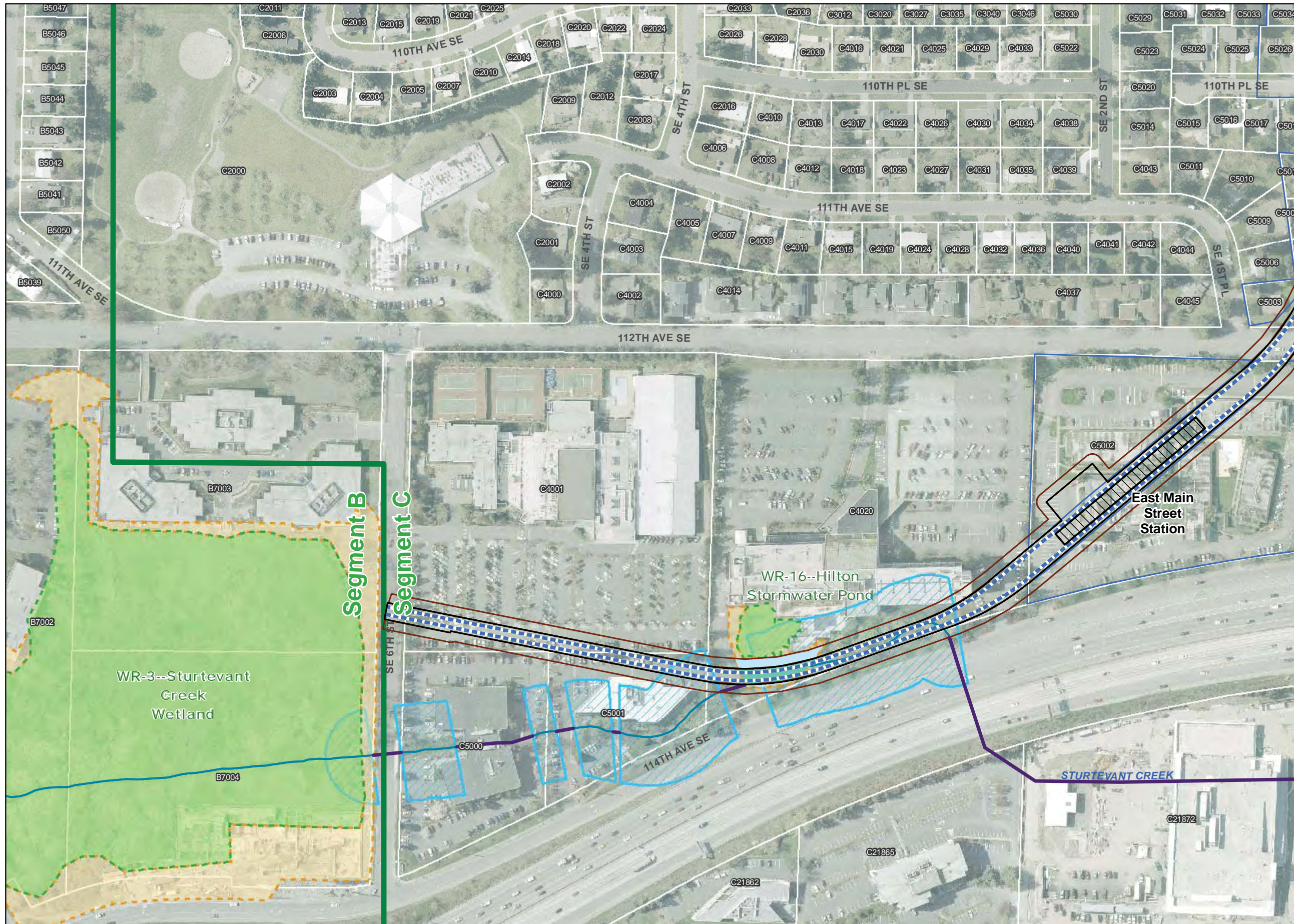


Exhibit F-45
Wetland, Wetland Buffer, and Wetland Mitigation Impacts
Alternative C9T from B3
East Link Project



- At-Grade Route
- - - Elevated Route
- Retained-Cut Route
- Retained-Fill Route
- - - Tunnel Route
- Operational Footprint**
- ▭ ROW
- ▭ Park and Ride
- Construction Footprint**
- ▭ Construction Footprint
- ▭ Staging Area
- ▨ Station
- ▨ Maintenance Facility
- ▭ Wetland
- ▭ Wetland Buffer
- ▨ Wetland Mitigation Site (WSDOT)
- ▨ Operational Wetland Impact
- ▨ Construction Wetland Impact
- ▨ Operational Wetland Buffer Impact
- ▨ Construction Wetland Buffer Impact
- ▨ Wetland Mitigation Impact
- ▨ Stream Buffer
- ▭ Open Channel
- ▭ Piped Stream
- ▭ Parcel with MapID

Aerial Photo: Sound Transit (2009)

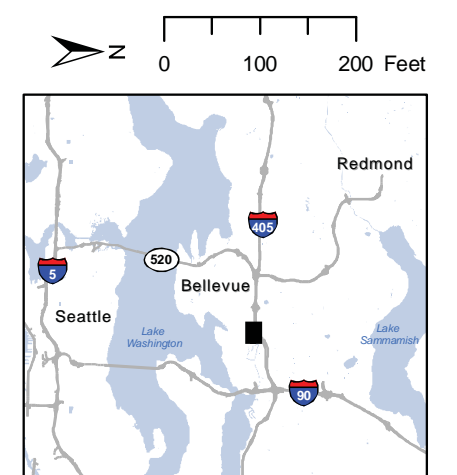
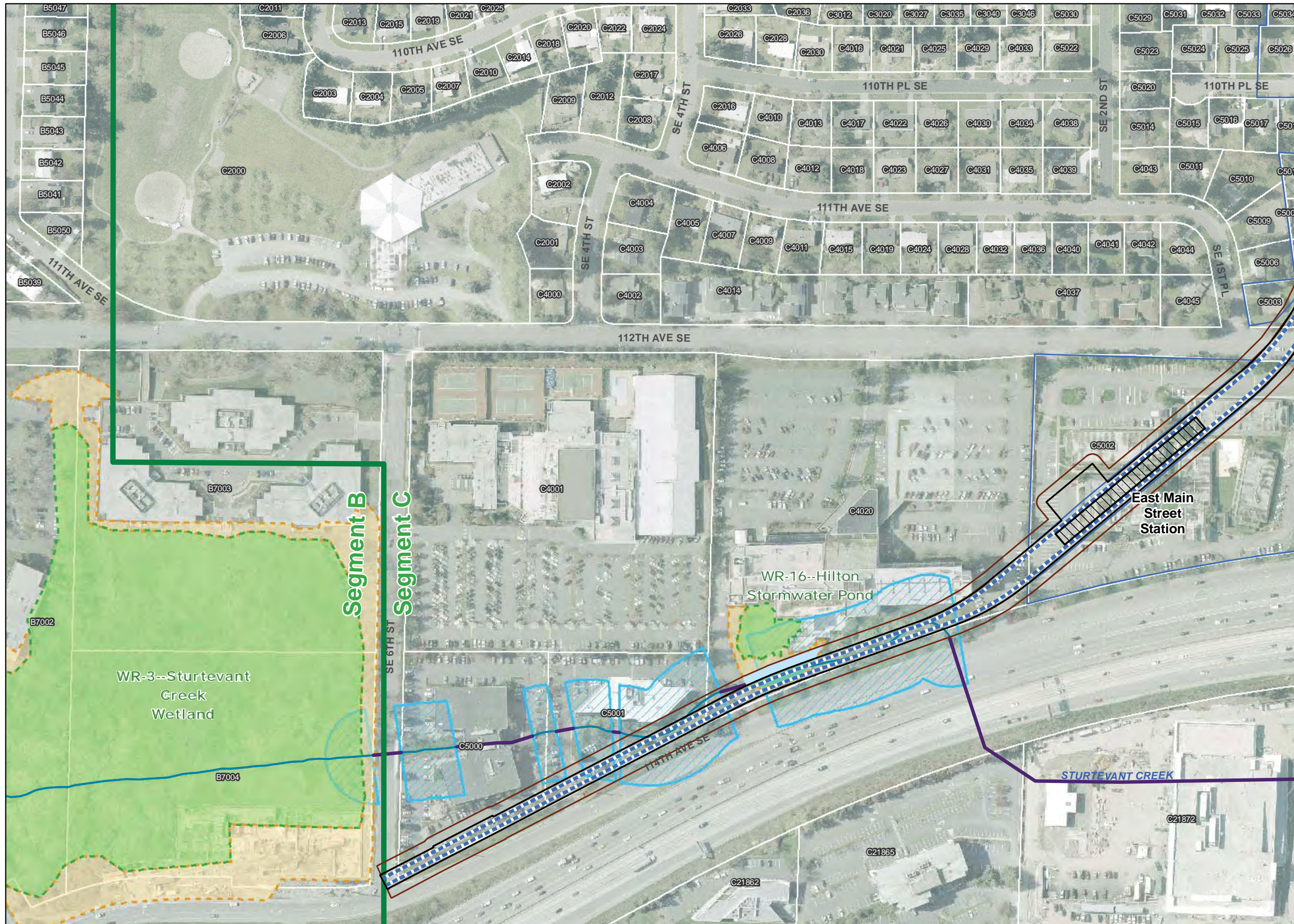


Exhibit F-46
Wetland, Wetland Buffer, and Wetland Mitigation Impacts
Alternative C9T from B3
Design Option/B7
East Link Project



- At-Grade Route
- Elevated Route
- Retained-Cut Route
- Retained-Fill Route
- Tunnel Route
- Operational Footprint**
- ROW
- Park and Ride
- Construction Footprint**
- Construction Footprint
- Staging Area
- Station
- Maintenance Facility
- Wetland
- Wetland Buffer
- Wetland Mitigation Site (WSDOT)
- Operational Wetland Impact
- Construction Wetland Impact
- Operational Wetland Buffer Impact
- Construction Wetland Buffer Impact
- Wetland Mitigation Impact
- Stream Buffer
- Open Channel
- Piped Stream
- Parcel with MapID

Aerial Photo: Sound Transit (2009)

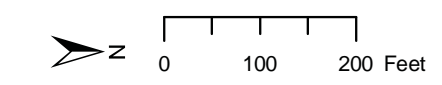
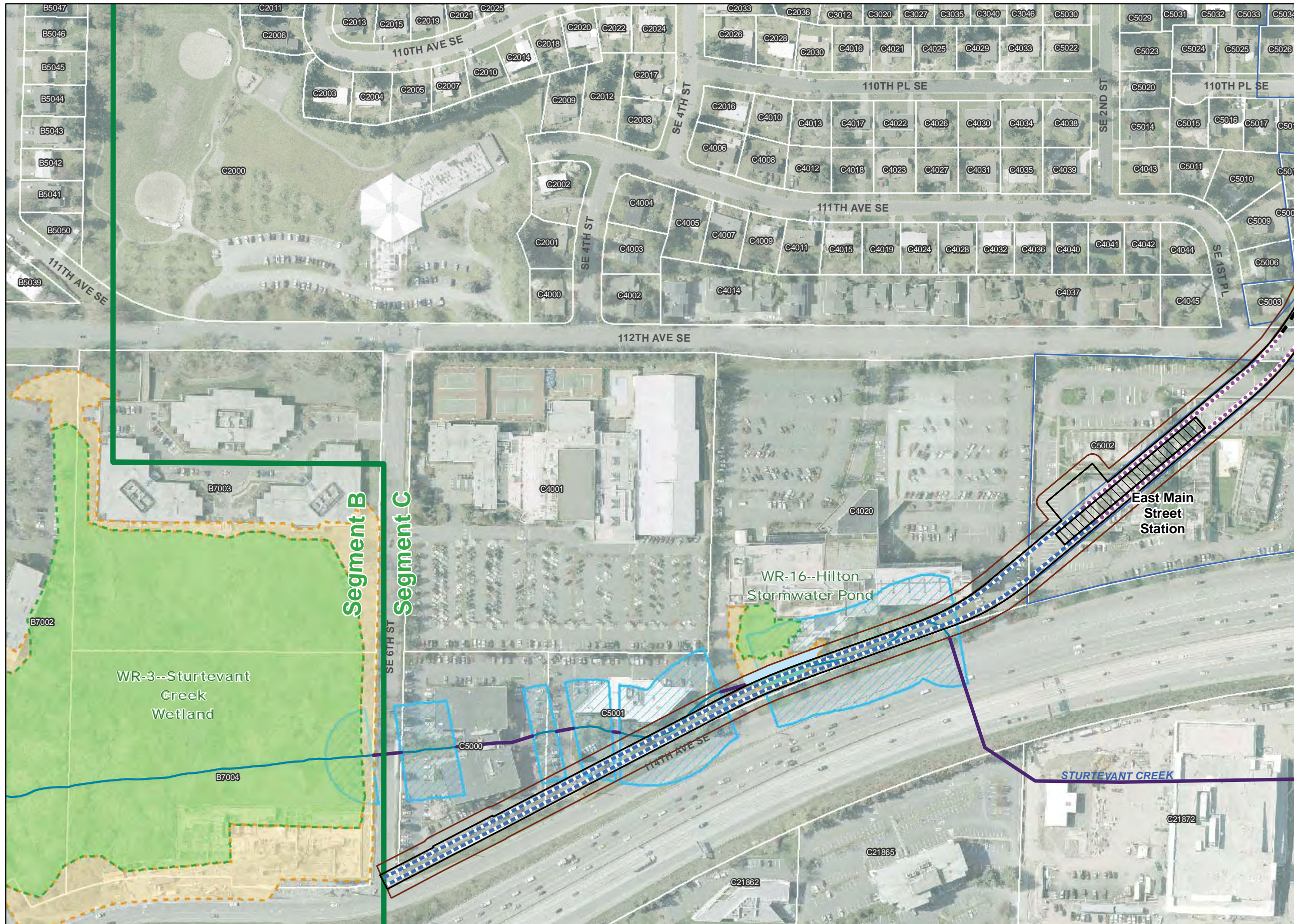


Exhibit F-48
Wetland, Wetland Buffer, and Wetland Mitigation Impacts
Alternative C2T from B7
East Link Project



- At-Grade Route
- - - Elevated Route
- · · Retained-Cut Route
- · · Retained-Fill Route
- - - Tunnel Route
- Operational Footprint**
- ▭ ROW
- ▭ Park and Ride
- Construction Footprint**
- ▭ Construction Footprint
- ▭ Staging Area
- ▭ Station
- ▭ Maintenance Facility
- ▭ Wetland
- ▭ Wetland Buffer
- ▭ Wetland Mitigation Site (WSDOT)
- ▭ Operational Wetland Impact
- ▭ Construction Wetland Impact
- ▭ Operational Wetland Buffer Impact
- ▭ Construction Wetland Buffer Impact
- ▭ Wetland Mitigation Impact
- ▭ Stream Buffer
- ▭ Open Channel
- ▭ Piped Stream
- ▭ Parcel with MapID

Aerial Photo: Sound Transit (2009)

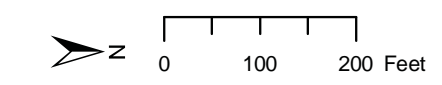
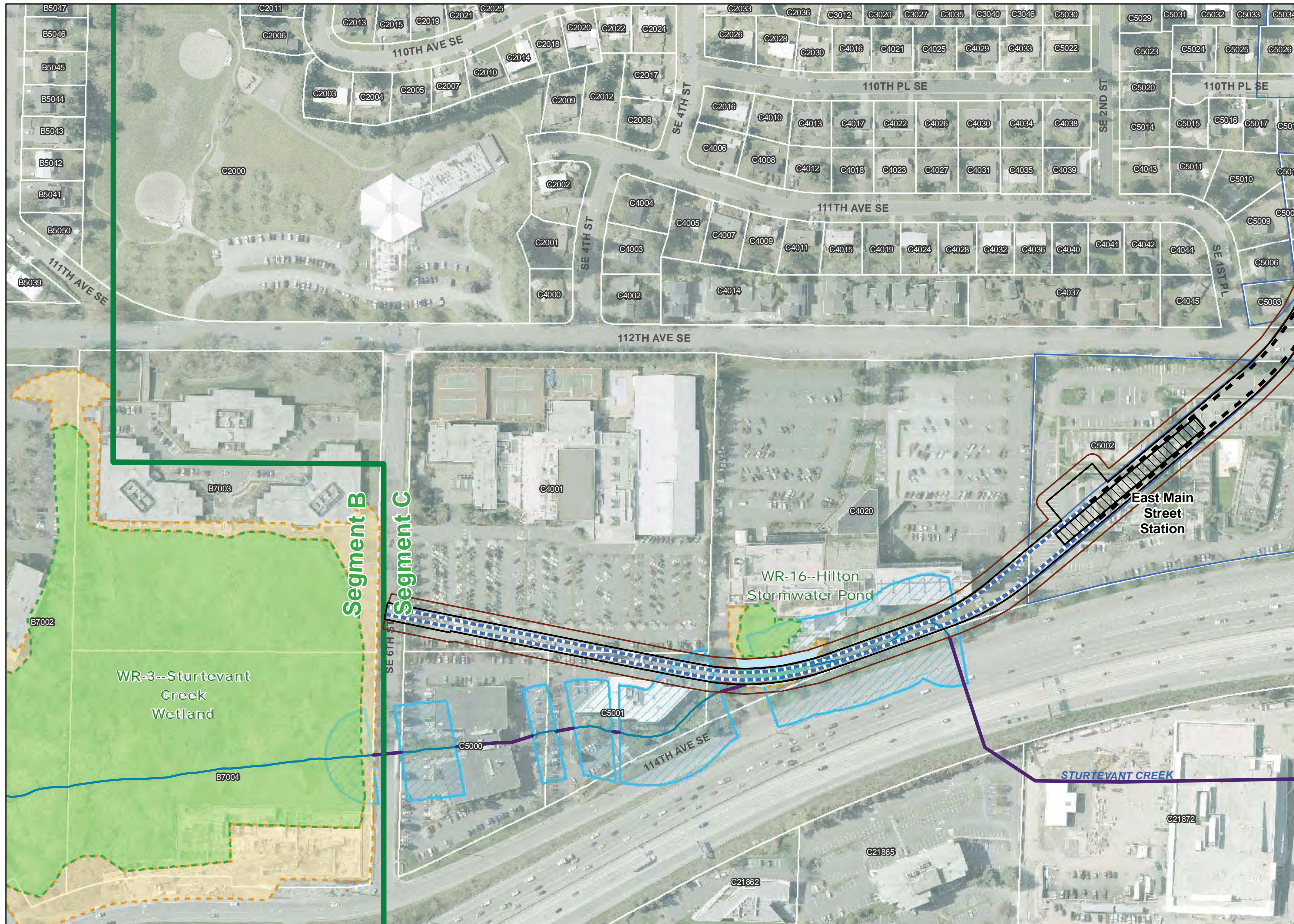


Exhibit F-49
Wetland, Wetland Buffer, and Wetland Mitigation Impacts
Alternative C3T from B3
East Link Project



- At-Grade Route
- - - Elevated Route
- Retained-Cut Route
- Retained-Fill Route
- - - Tunnel Route
- Operational Footprint**
- ▭ ROW
- ▭ Park and Ride
- Construction Footprint**
- ▭ Construction Footprint
- ▭ Staging Area
- ▭ Station
- ▭ Maintenance Facility
- ▭ Wetland
- ▭ Wetland Buffer
- ▭ Wetland Mitigation Site (WSDOT)
- ▭ Operational Wetland Impact
- ▭ Construction Wetland Impact
- ▭ Operational Wetland Buffer Impact
- ▭ Construction Wetland Buffer Impact
- ▭ Wetland Mitigation Impact
- ▭ Stream Buffer
- ▭ Open Channel
- ▭ Piped Stream
- ▭ Parcel with MapID

Aerial Photo: Sound Transit (2009)

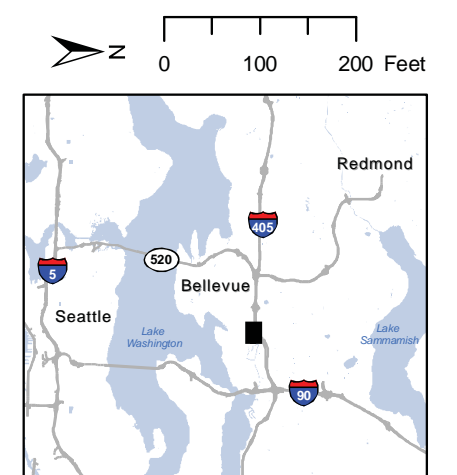
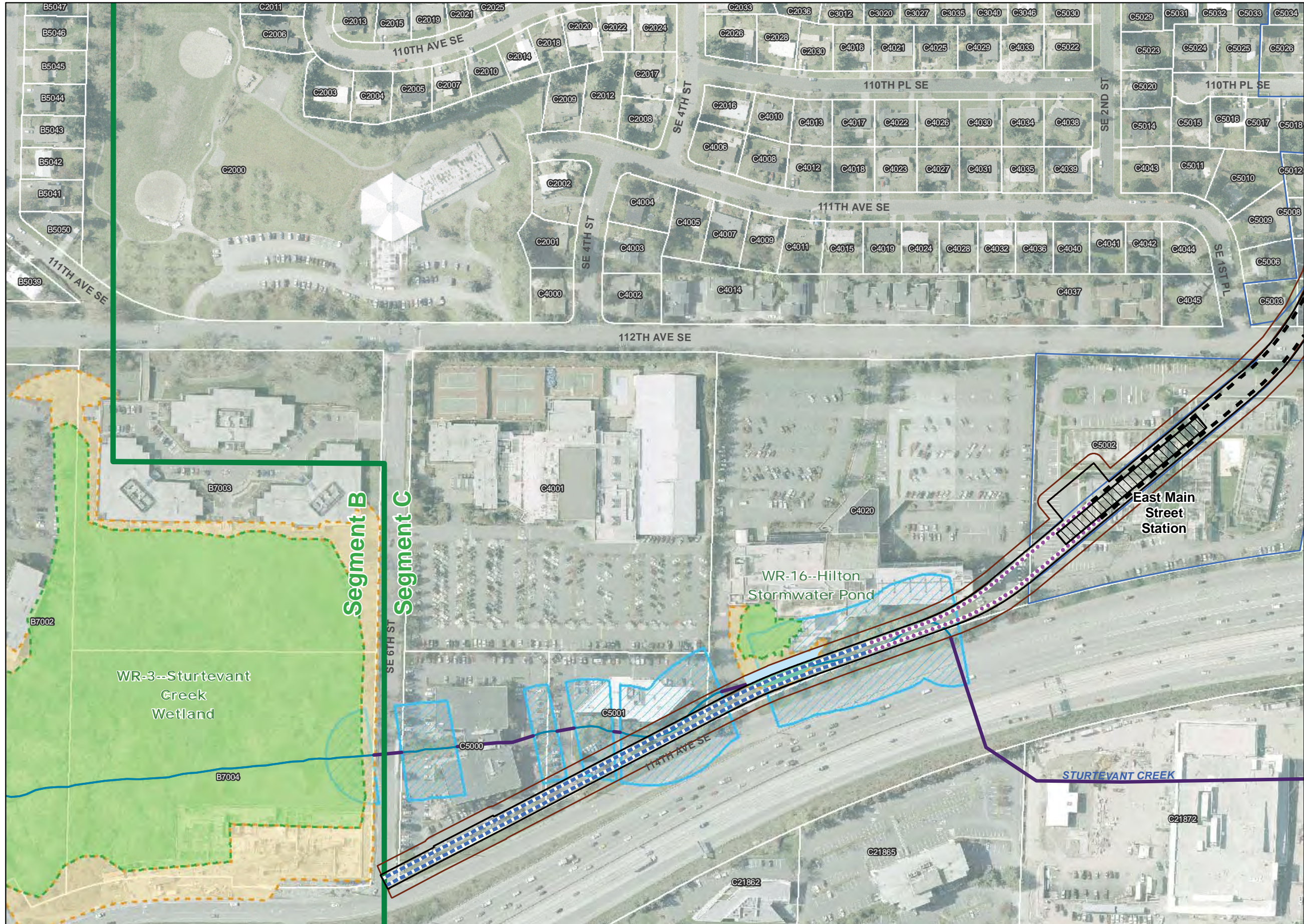


Exhibit F-50
Wetland, Wetland Buffer, and Wetland Mitigation Impacts
Alternative C3T from B7
East Link Project



- At-Grade Route
- - - Elevated Route
- · · Retained-Cut Route
- · · Retained-Fill Route
- - - Tunnel Route
- Operational Footprint**
- ▭ ROW
- ▭ Park and Ride
- Construction Footprint**
- ▭ Construction Footprint
- ▭ Staging Area
- ▭ Station
- ▭ Maintenance Facility
- ▭ Wetland
- ▭ Wetland Buffer
- ▭ Wetland Mitigation Site (WSDOT)
- ▭ Operational Wetland Impact
- ▭ Construction Wetland Impact
- ▭ Operational Wetland Buffer Impact
- ▭ Construction Wetland Buffer Impact
- ▭ Wetland Mitigation Impact
- ▭ Stream Buffer
- ▭ Open Channel
- ▭ Piped Stream
- ▭ Parcel with MapID

Aerial Photo: Sound Transit (2009)

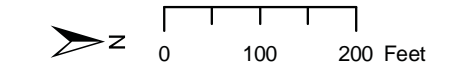
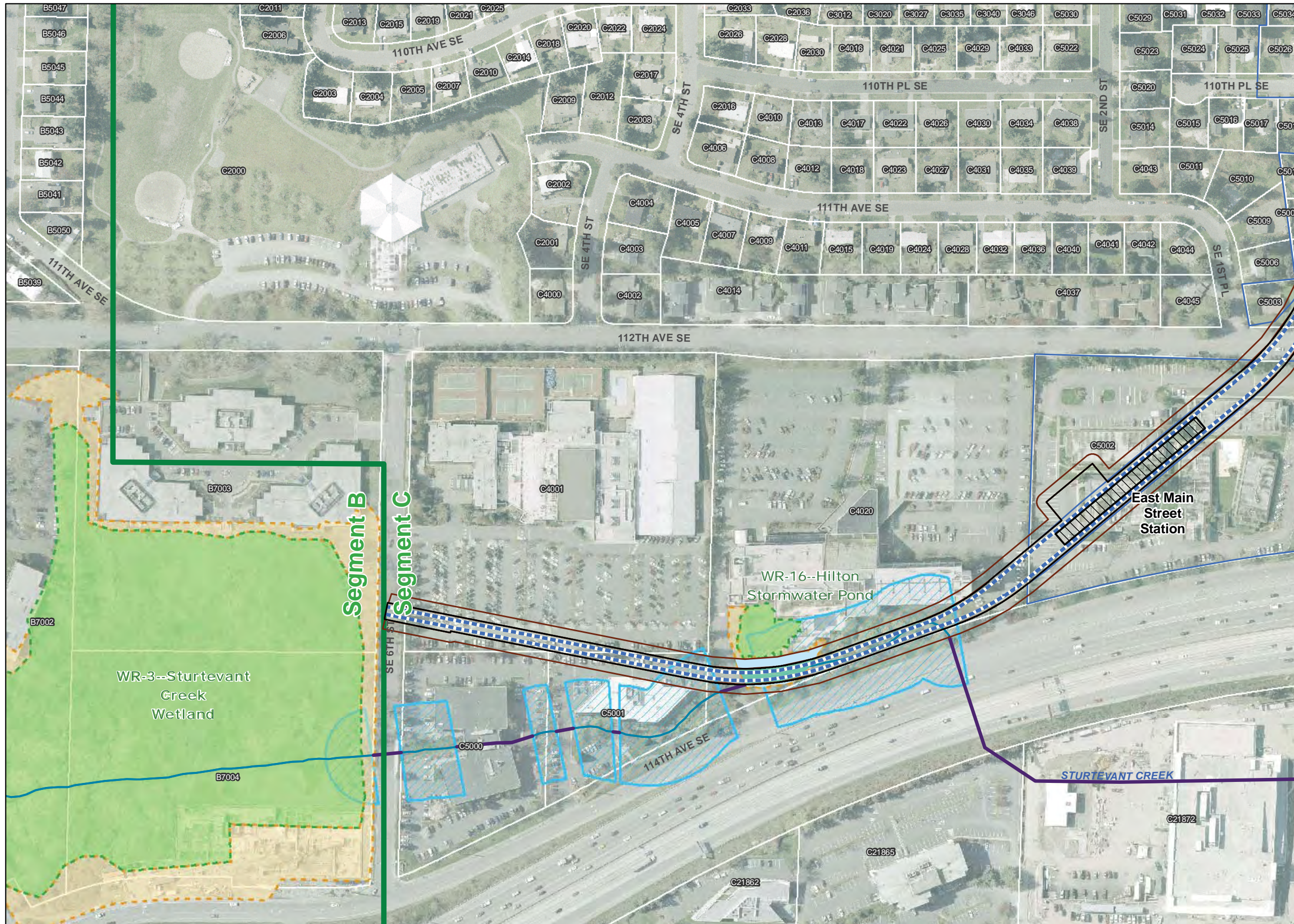


Exhibit F-51
Wetland, Wetland Buffer, and Wetland Mitigation Impacts
Alternative C4A from B3
East Link Project



- At-Grade Route
- Elevated Route
- Retained-Cut Route
- Retained-Fill Route
- Tunnel Route
- Operational Footprint**
- ROW
- Park and Ride
- Construction Footprint**
- Construction Footprint
- Staging Area
- Station
- Maintenance Facility
- Wetland
- Wetland Buffer
- Wetland Mitigation Site (WSDOT)
- Operational Wetland Impact
- Construction Wetland Impact
- Operational Wetland Buffer Impact
- Construction Wetland Buffer Impact
- Wetland Mitigation Impact
- Stream Buffer
- Open Channel
- Piped Stream
- Parcel with MapID

Aerial Photo: Sound Transit (2009)

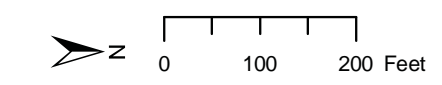
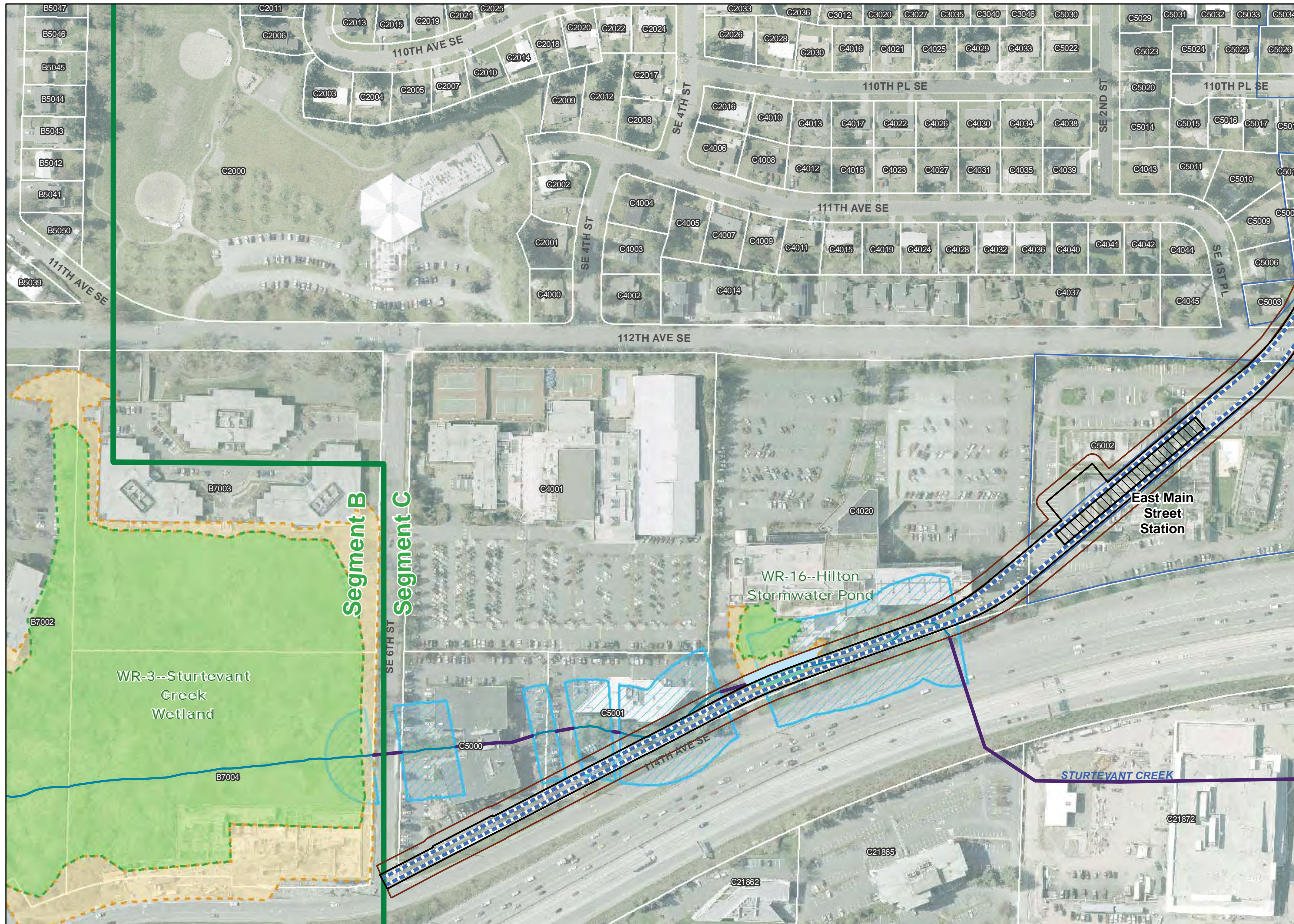


Exhibit F-52
Wetland, Wetland Buffer, and Wetland Mitigation Impacts
Alternative C4A from B7
East Link Project



- At-Grade Route
- Elevated Route
- Retained-Cut Route
- Retained-Fill Route
- Tunnel Route
- Operational Footprint**
- ROW
- Park and Ride
- Construction Footprint**
- Construction Footprint
- Staging Area
- Station
- Maintenance Facility
- Wetland
- Wetland Buffer
- Wetland Mitigation Site (WSDOT)
- Operational Wetland Impact
- Construction Wetland Impact
- Operational Wetland Buffer Impact
- Construction Wetland Buffer Impact
- Wetland Mitigation Impact
- Stream Buffer
- Open Channel
- Piped Stream
- Parcel with MapID

Aerial Photo: Sound Transit (2009)

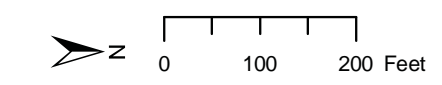
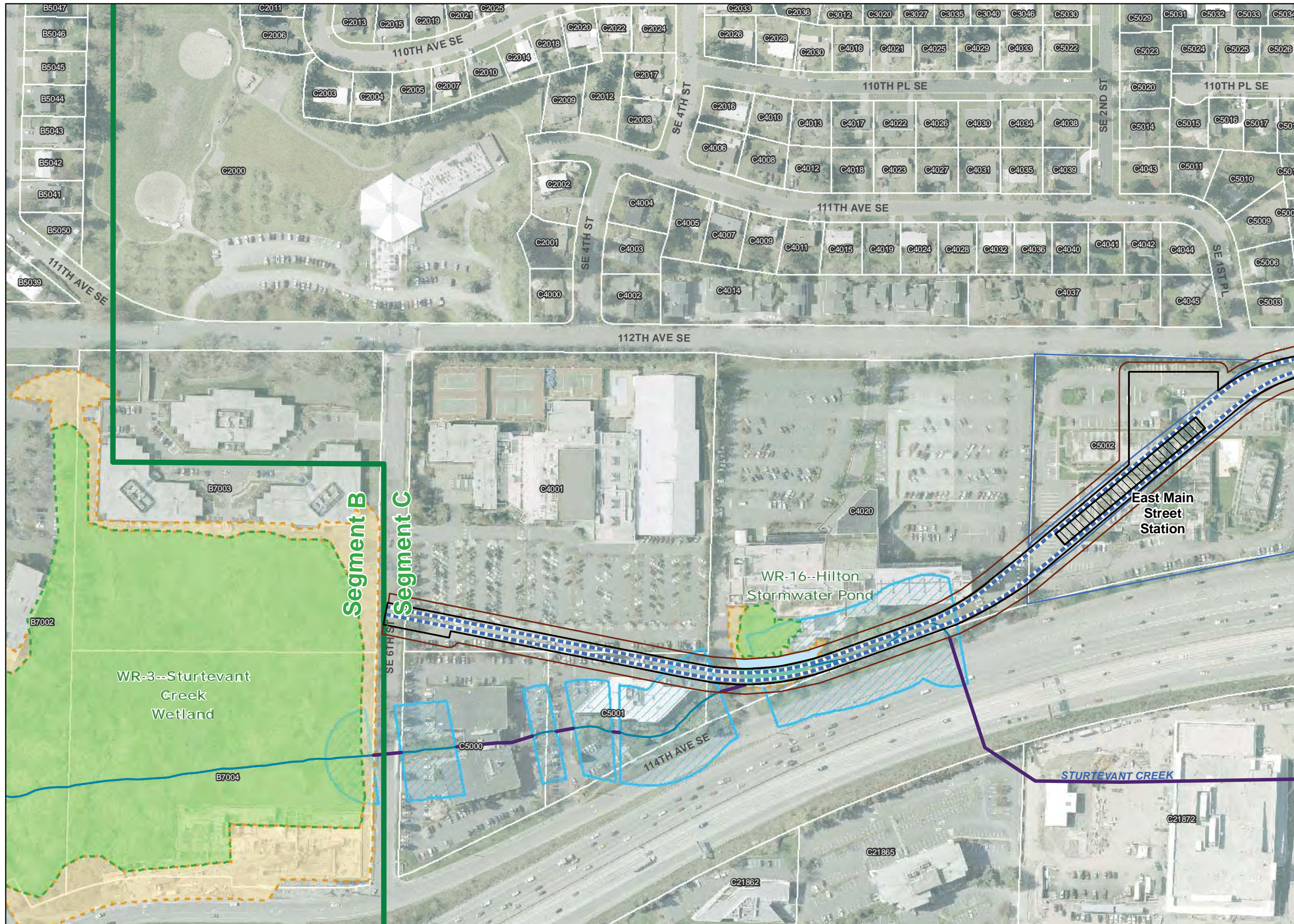


Exhibit F-53
Wetland, Wetland Buffer, and Wetland Mitigation Impacts
Alternative C7E from B3
East Link Project



Aerial Photo: Sound Transit (2009)

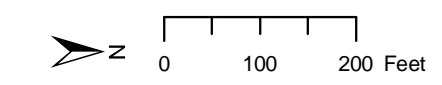
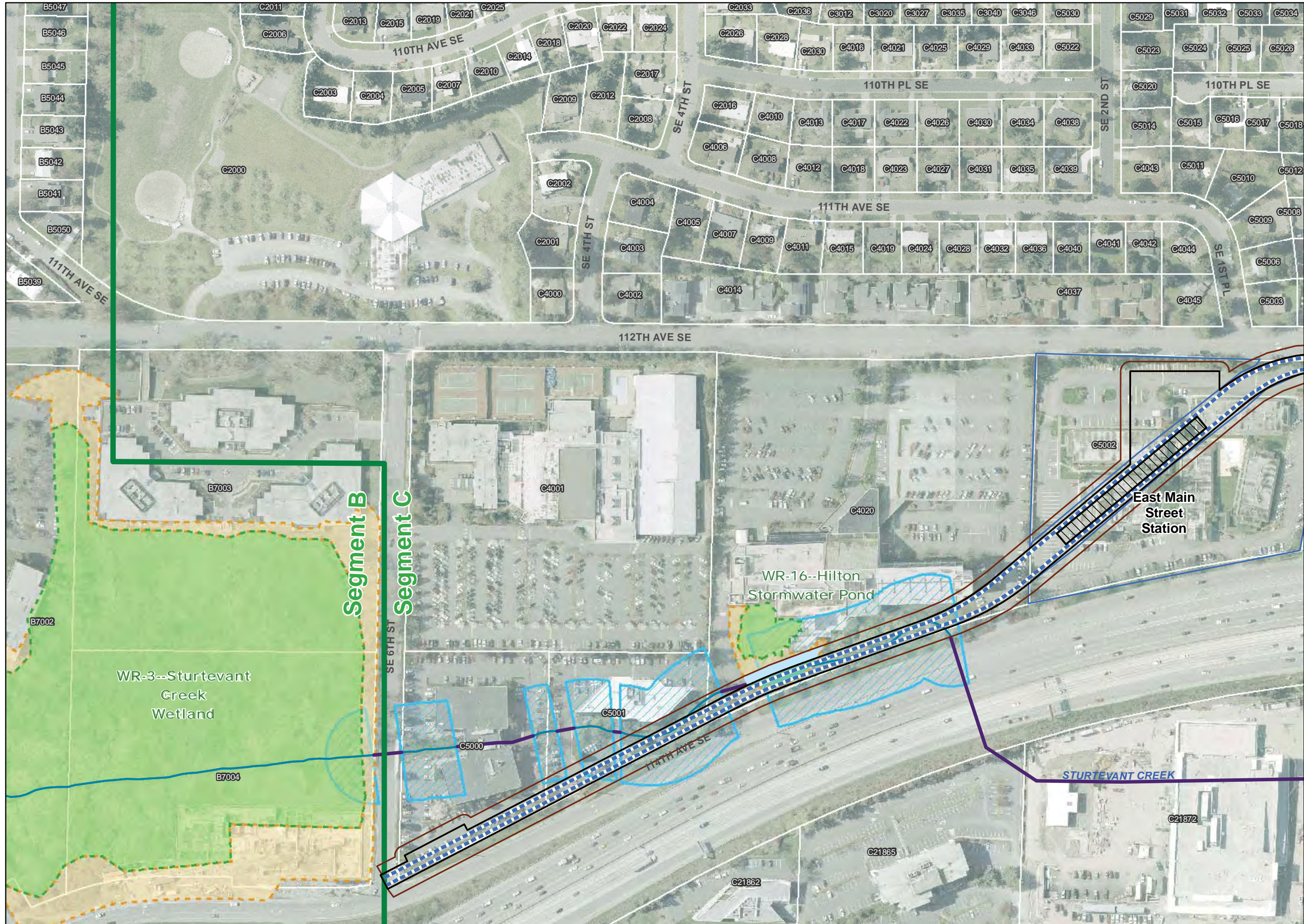


Exhibit F-54
Wetland, Wetland Buffer, and Wetland Mitigation Impacts
Alternative C7E from B7
East Link Project

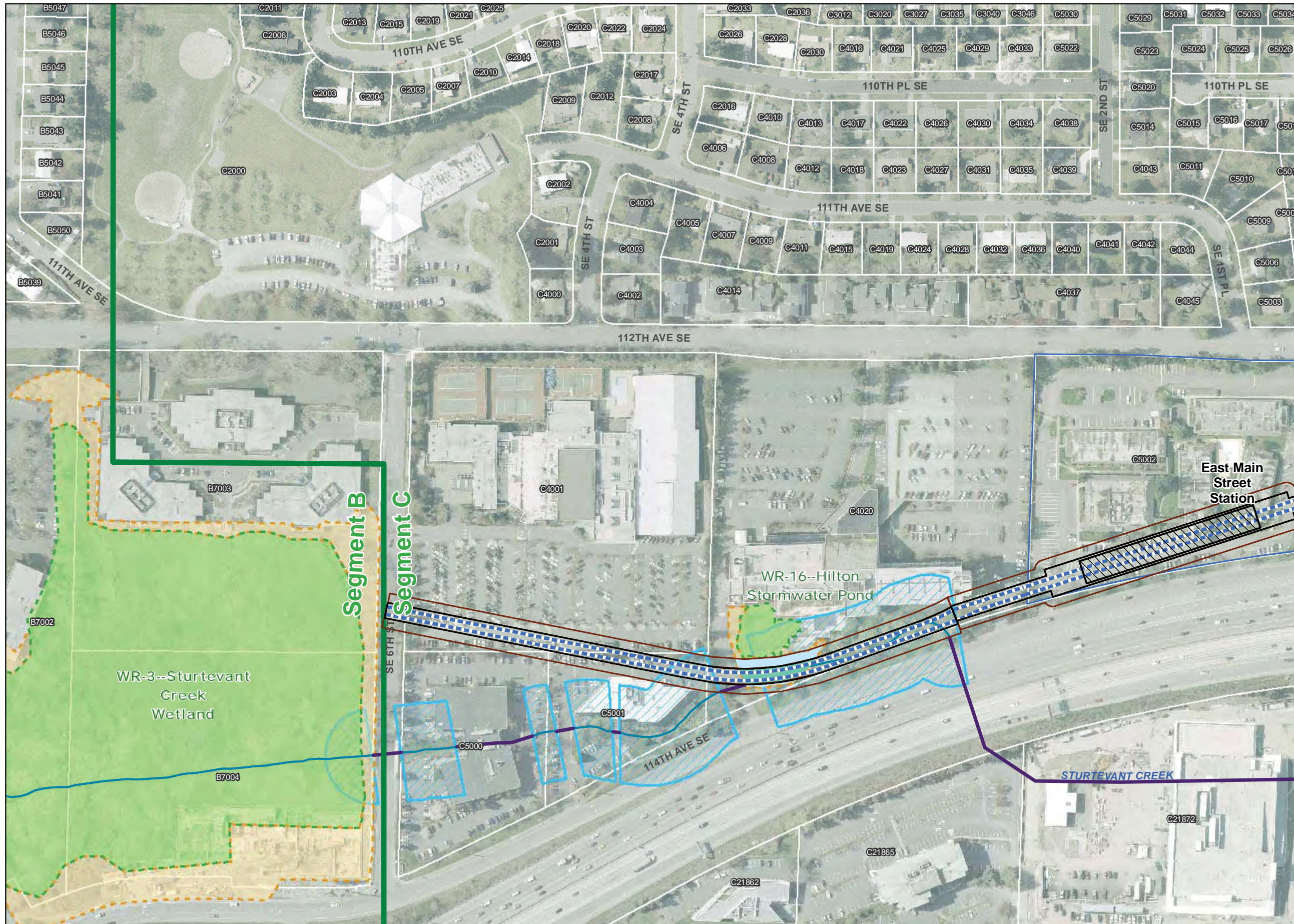


- At-Grade Route
- - - Elevated Route
- Retained-Cut Route
- Retained-Fill Route
- - - Tunnel Route
- Operational Footprint**
- ▭ ROW
- ▭ Park and Ride
- Construction Footprint**
- ▭ Construction Footprint
- ▭ Staging Area
- ▨ Station
- ▨ Maintenance Facility
- ▭ Wetland
- ▭ Wetland Buffer
- ▨ Wetland Mitigation Site (WSDOT)
- ▨ Operational Wetland Impact
- ▨ Construction Wetland Impact
- ▨ Operational Wetland Buffer Impact
- ▨ Construction Wetland Buffer Impact
- ▨ Wetland Mitigation Impact
- ▨ Stream Buffer
- ▨ Open Channel
- ▨ Piped Stream
- ▭ Parcel with MapID

Aerial Photo: Sound Transit (2009)



Exhibit F-55
Wetland, Wetland Buffer, and Wetland Mitigation Impacts
Alternative C8E from B3
East Link Project



- At-Grade Route
- - - Elevated Route
- • • Retained-Cut Route
- • • Retained-Fill Route
- - - Tunnel Route
- Operational Footprint**
- ROW
- Park and Ride
- Construction Footprint**
- Construction Footprint
- Staging Area
- Station
- Maintenance Facility
- Wetland
- Wetland Buffer
- Wetland Mitigation Site (WSDOT)
- Operational Wetland Impact
- Construction Wetland Impact
- Operational Wetland Buffer Impact
- Construction Wetland Buffer Impact
- Wetland Mitigation Impact
- Stream Buffer
- Open Channel
- Piped Stream
- Parcel with MapID

Aerial Photo: Sound Transit (2009)

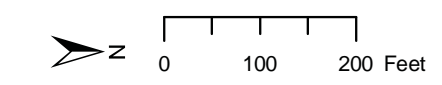
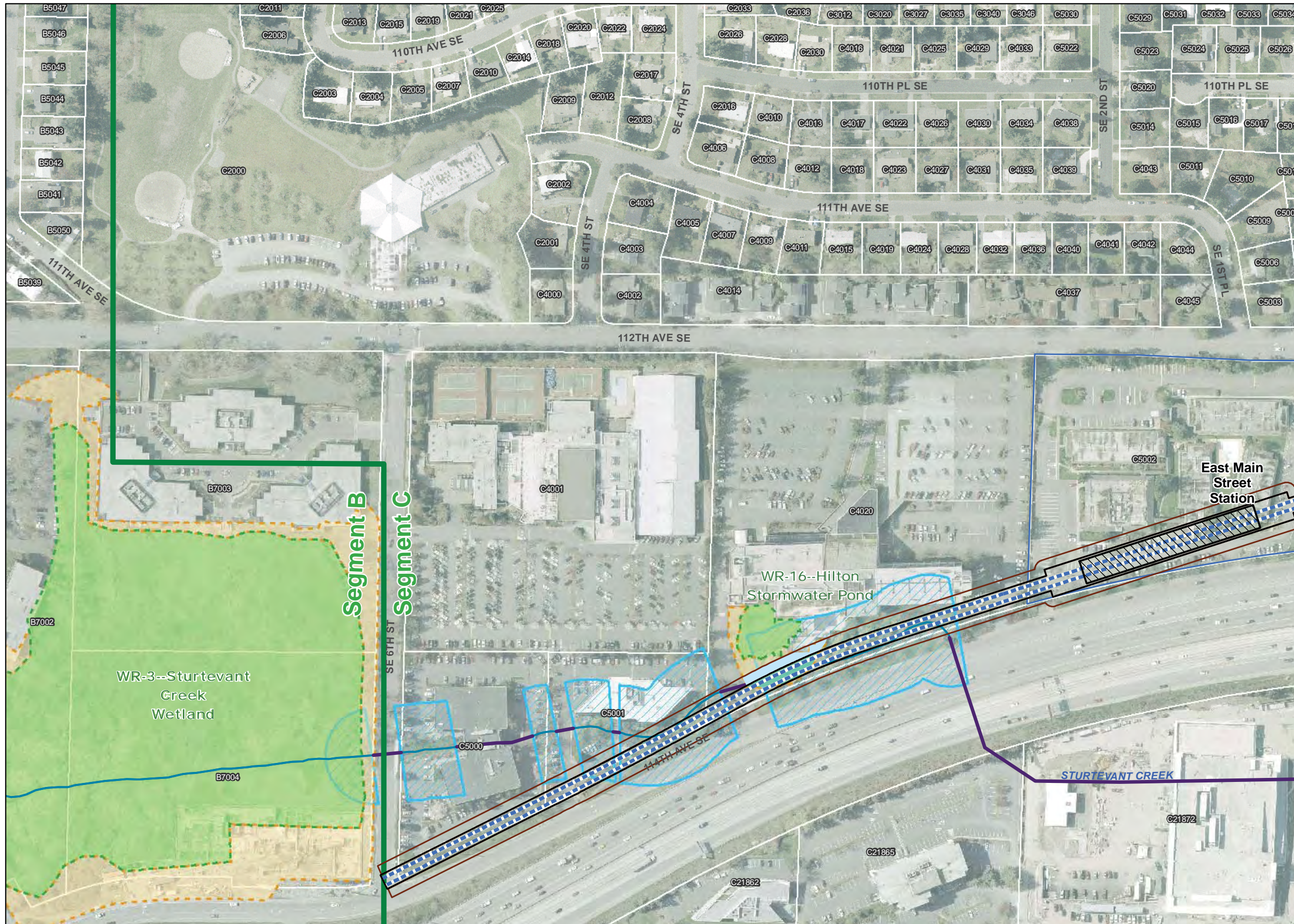


Exhibit F-56
Wetland, Wetland Buffer, and Wetland Mitigation Impacts
Alternative C8E from B7
East Link Project



- At-Grade Route
- - - Elevated Route
- Retained-Cut Route
- Retained-Fill Route
- - - Tunnel Route
- Operational Footprint**
- ▭ ROW
- ▭ Park and Ride
- Construction Footprint**
- ▭ Construction Footprint
- ▭ Staging Area
- ▭ Station
- ▭ Maintenance Facility
- ▭ Wetland
- ▭ Wetland Buffer
- ▭ Wetland Mitigation Site (WSDOT)
- ▭ Operational Wetland Impact
- ▭ Construction Wetland Impact
- ▭ Operational Wetland Buffer Impact
- ▭ Construction Wetland Buffer Impact
- ▭ Wetland Mitigation Impact
- ▭ Stream Buffer
- ▭ Open Channel
- ▭ Piped Stream
- ▭ Parcel with MapID

Aerial Photo: Sound Transit (2009)

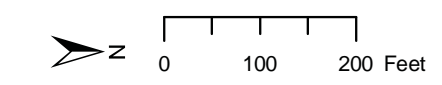
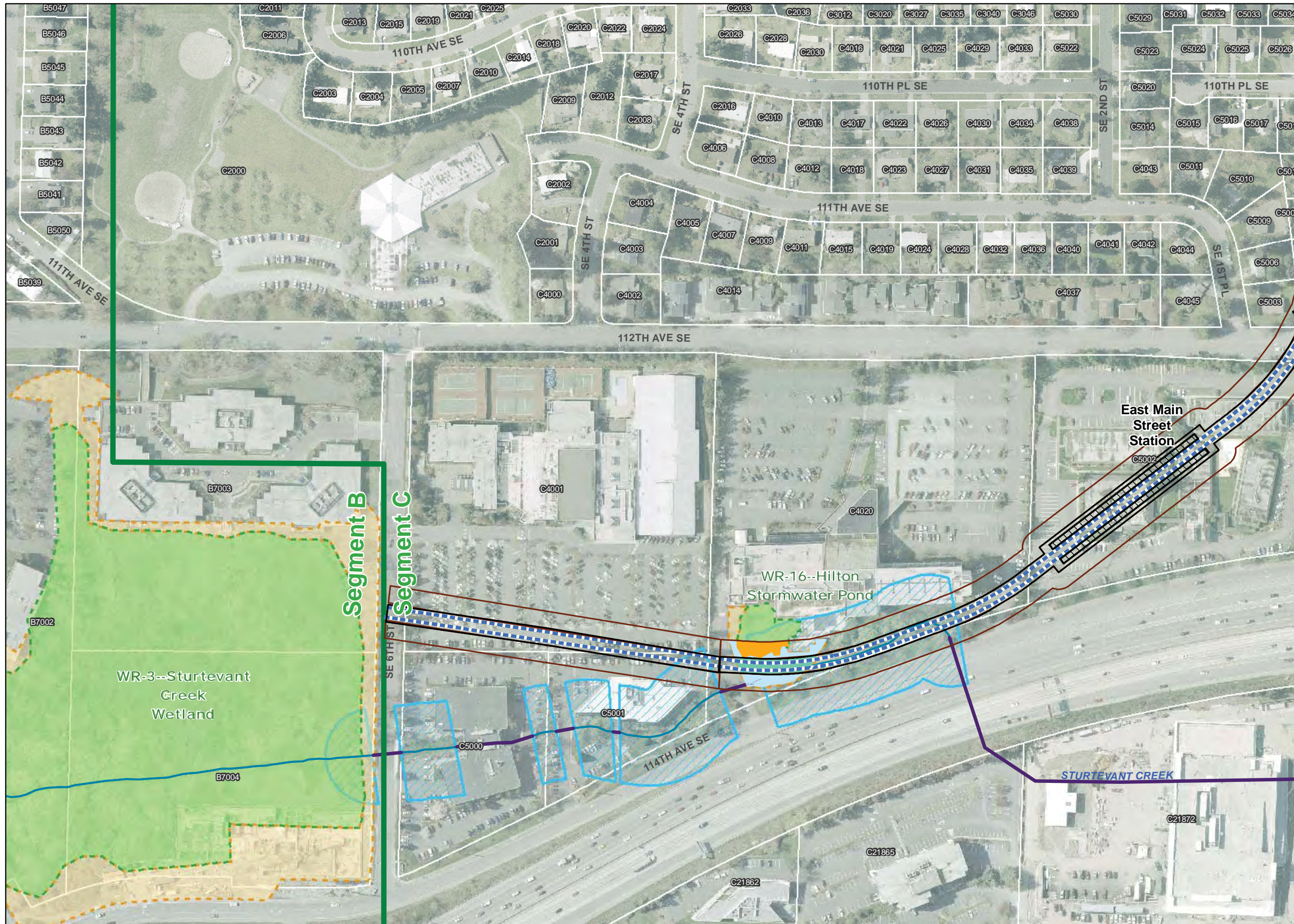


Exhibit F-57
Wetland, Wetland Buffer, and Wetland Mitigation Impacts
Alternative C9A from B3
East Link Project

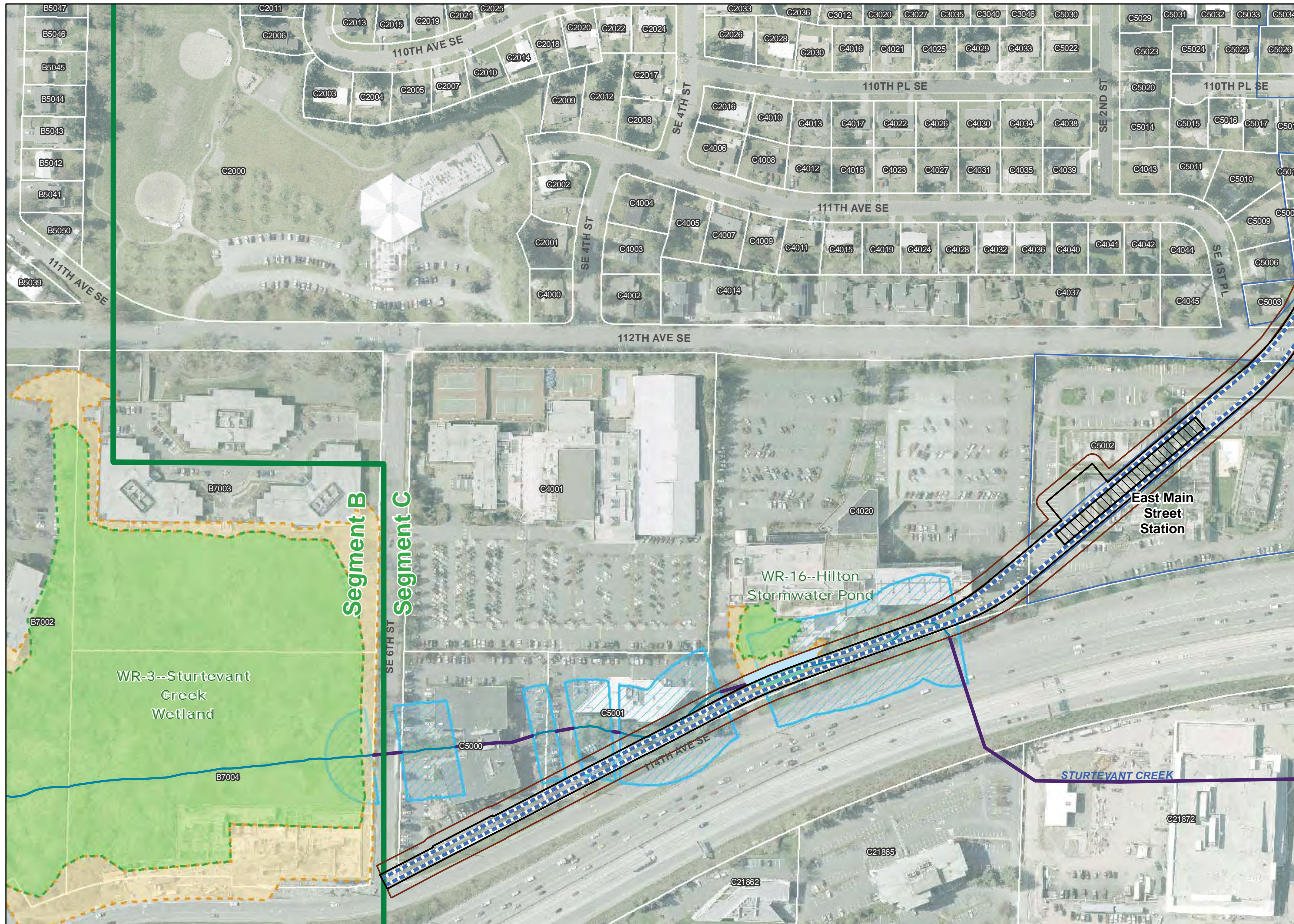


- At-Grade Route
- - - Elevated Route
- Retained-Cut Route
- Retained-Fill Route
- - - Tunnel Route
- Operational Footprint**
- ▭ ROW
- ▭ Park and Ride
- Construction Footprint**
- ▭ Construction Footprint
- ▭ Staging Area
- ▭ Station
- ▭ Maintenance Facility
- ▭ Wetland
- ▭ Wetland Buffer
- ▭ Wetland Mitigation Site (WSDOT)
- ▭ Operational Wetland Impact
- ▭ Construction Wetland Impact
- ▭ Operational Wetland Buffer Impact
- ▭ Construction Wetland Buffer Impact
- ▭ Wetland Mitigation Impact
- ▭ Stream Buffer
- ▭ Open Channel
- ▭ Piped Stream
- ▭ Parcel with MapID

Aerial Photo: Sound Transit (2009)



Exhibit F-58
Wetland, Wetland Buffer, and Wetland Mitigation Impacts
Alternative C9A from B3
Design Option/B7
East Link Project



- At-Grade Route
- Elevated Route
- Retained-Cut Route
- Retained-Fill Route
- Tunnel Route
- Operational Footprint**
- ROW
- Park and Ride
- Construction Footprint**
- Construction Footprint
- Staging Area
- Station
- Maintenance Facility
- Wetland
- Wetland Buffer
- Wetland Mitigation Site (WSDOT)
- Operational Wetland Impact
- Construction Wetland Impact
- Operational Wetland Buffer Impact
- Construction Wetland Buffer Impact
- Wetland Mitigation Impact
- Stream Buffer
- Open Channel
- Piped Stream
- Parcel with MapID

Aerial Photo: Sound Transit (2009)

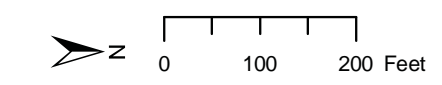
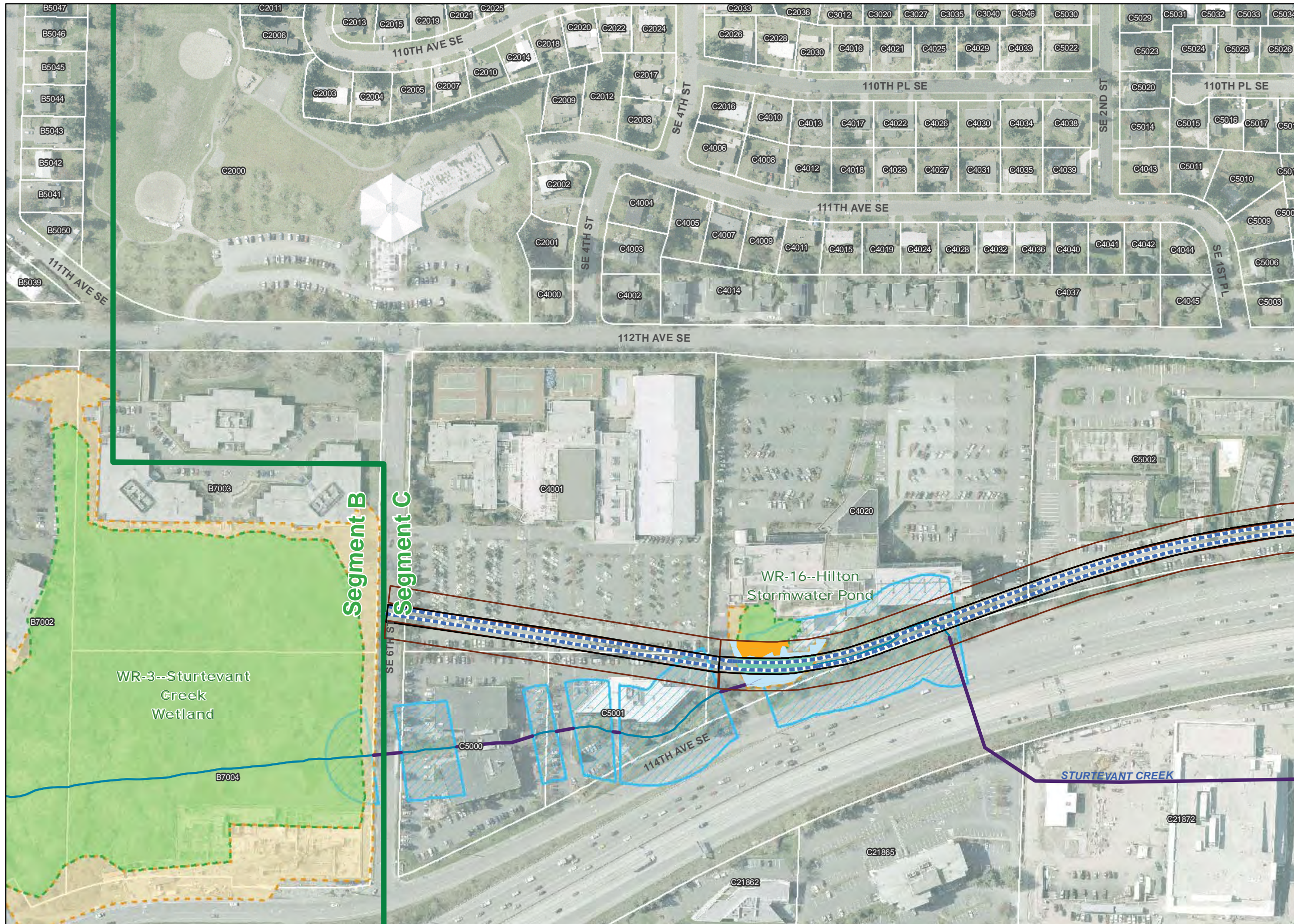


Exhibit F-59
Wetland, Wetland Buffer, and Wetland Mitigation Impacts
Alternative C14E from B3
East Link Project



- At-Grade Route
- Elevated Route
- Retained-Cut Route
- Retained-Fill Route
- Tunnel Route
- Operational Footprint**
- ROW
- Park and Ride
- Construction Footprint**
- Construction Footprint
- Staging Area
- Station
- Maintenance Facility
- Wetland
- Wetland Buffer
- Wetland Mitigation Site (WSDOT)
- Operational Wetland Impact
- Construction Wetland Impact
- Operational Wetland Buffer Impact
- Construction Wetland Buffer Impact
- Wetland Mitigation Impact
- Stream Buffer
- Open Channel
- Piped Stream
- Parcel with MapID

Aerial Photo: Sound Transit (2009)



