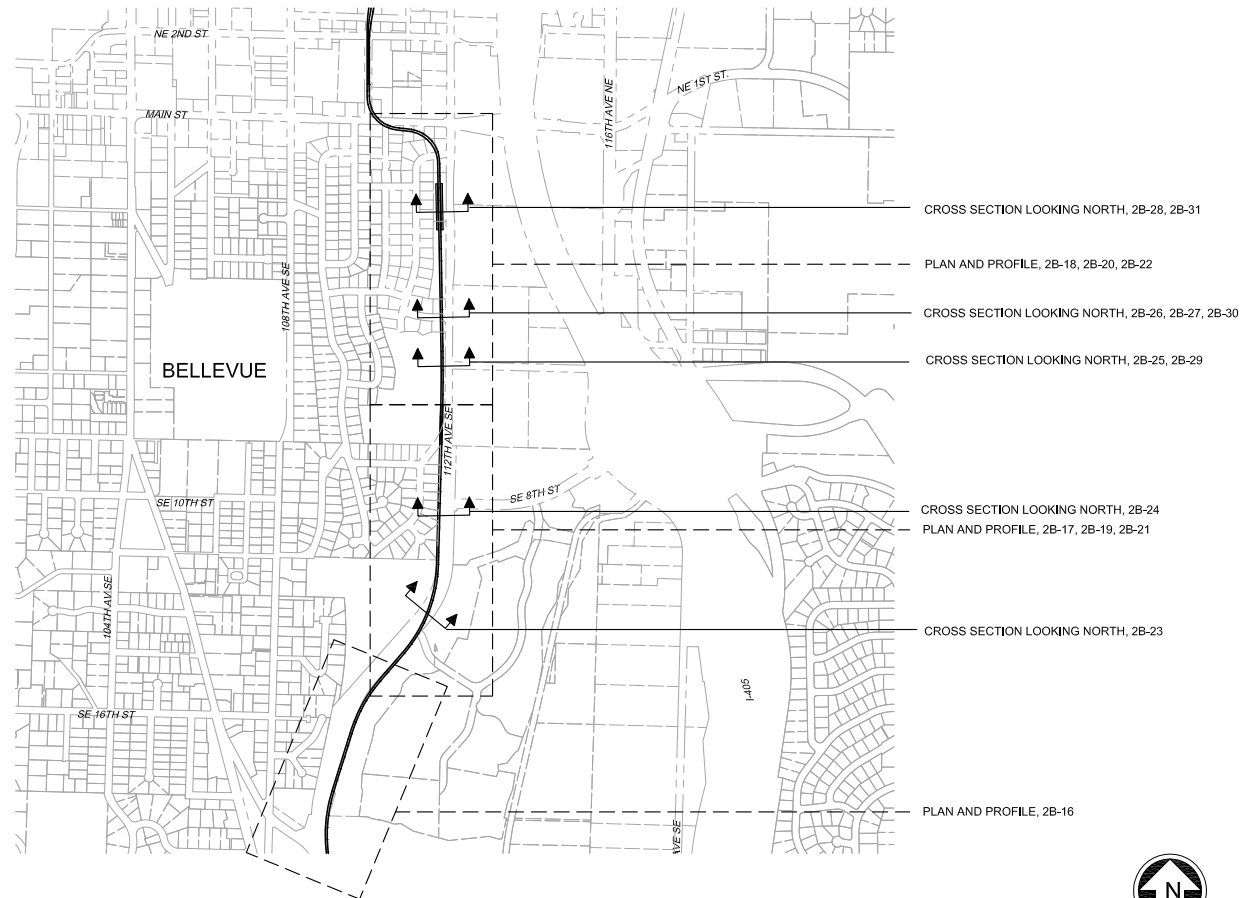


02/28/13 1:15:12 PM J. CALDWELL
 C:\PRESENTATIONS\EAST_NIKEL_JTA_ENV_DRAWINGS\REL_SEPA\ADD15_GX-15.DWG



CROSS SECTION LOOKING NORTH, 2B-28, 2B-31

PLAN AND PROFILE, 2B-18, 2B-20, 2B-22

CROSS SECTION LOOKING NORTH, 2B-26, 2B-27, 2B-30

CROSS SECTION LOOKING NORTH, 2B-25, 2B-29

CROSS SECTION LOOKING NORTH, 2B-24

PLAN AND PROFILE, 2B-17, 2B-19, 2B-21

CROSS SECTION LOOKING NORTH, 2B-23

PLAN AND PROFILE, 2B-16



No.	DATE	DSN	CHK	APP	REVISION

DESIGNED BY:
J. CALDWELL
 DRAWN BY:
J. CALDWELL
 CHECKED BY:
B. WILLIAMS
 APPROVED BY:
J. SCHEITTLER



SUBMITTED BY:

FINAL DESIGN PARTNERS.

LINE & STAT FULL SCALE

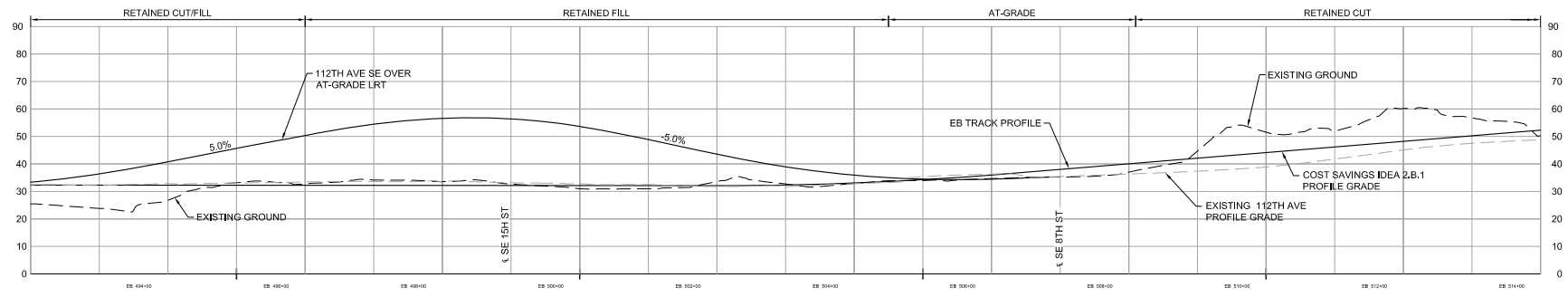
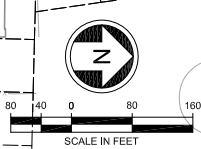
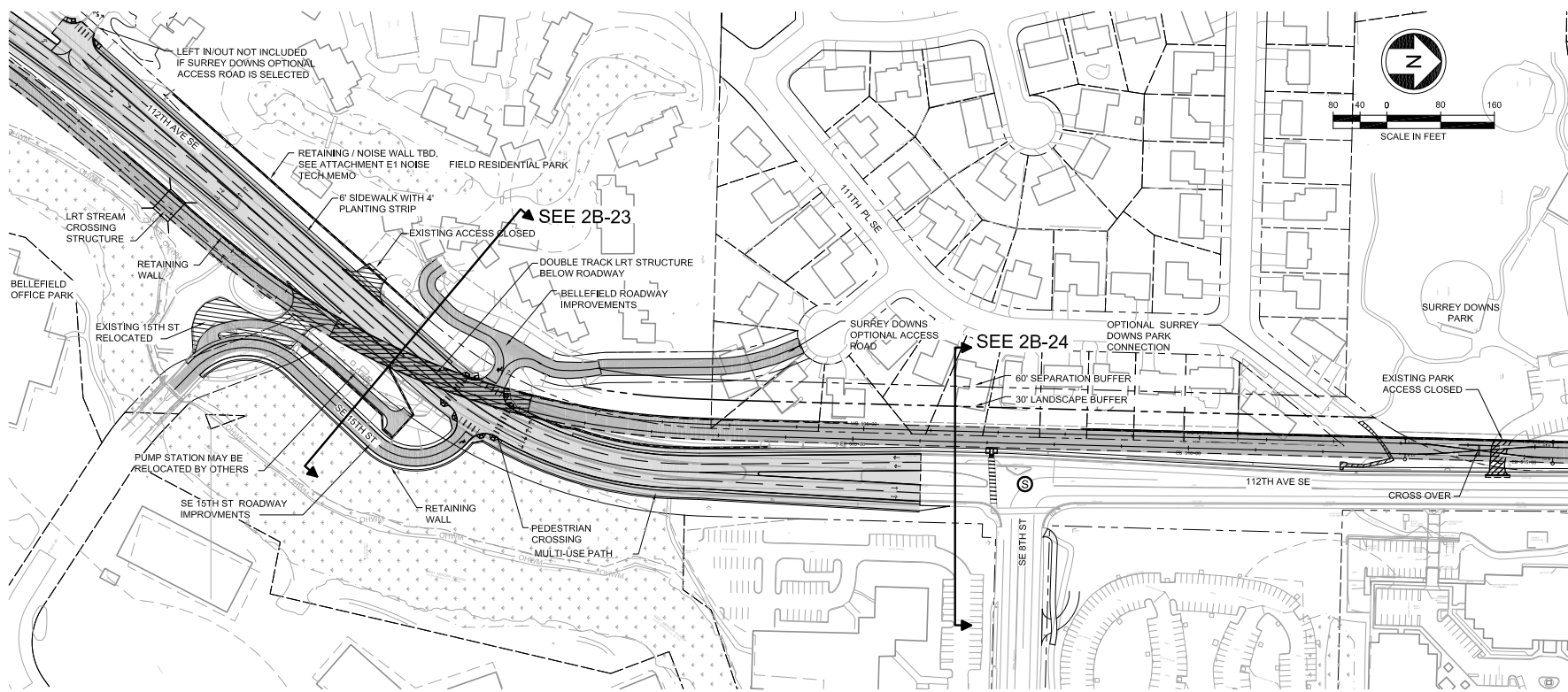
SOUNDTRANSIT

DATE:

SCALE: NOT TO SCALE
 FILENAME: 15_GX-15.dwg
 CONTRACT UNIT (CUD): TO 5.15
 DATE: 2/4/13

LINK LIGHT RAIL PROJECT
 EAST CORRIDOR
 BELLEVUE TO REDMOND
 112TH ROAD OVER RAIL
 KEY PLAN

DRAWING No.: GX-15
 SHEET No.: 15
 REV: 1



10/24/13 1:15:12 PM J. ACQUEMARTZ
 C:\PRESENTATIONS\EAST_INKEL_FTA_ENV_DRAWINGS\EL_SEPA_ADD17_2B_17.DWG

No.	DATE	DSN	CHK	APP	REVISION

DESIGNED BY:
R. MCKELLY

DRAWN BY:
B. NELSON

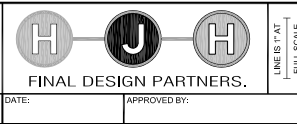
CHECKED BY:
B. WILLIAMS

APPROVED BY:
J. SCHEITTLER



SUBMITTED BY:

DATE:



LINE & STAT FULL SCALE

DATE:

SCALE:
AS SHOWN

FILENAME:
17_2B_17.dwg

CONTRACT UNIT (CUD):
TO 5.15

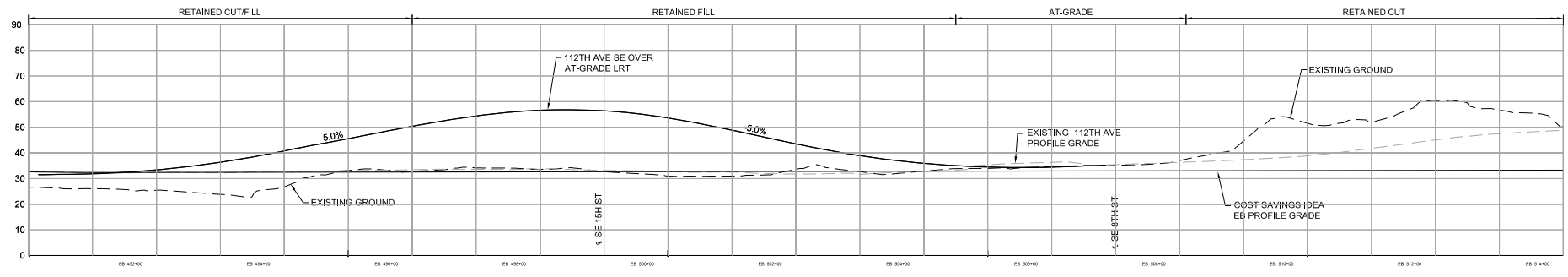
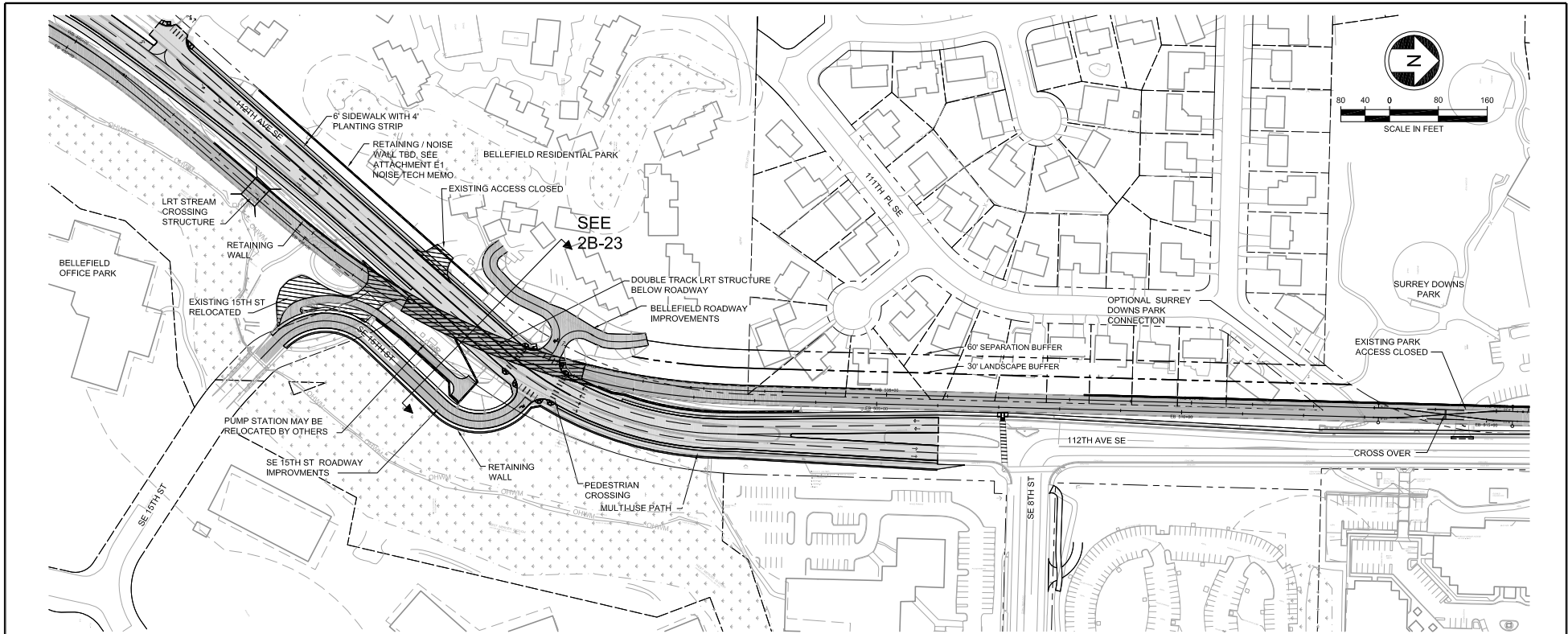
DATE:
2/4/13

LINK LIGHT RAIL PROJECT
EAST CORRIDOR
BELLEVUE TO REDMOND

112TH ROAD OVER RAIL - SE 4TH ST EMERGENCY ACCESS
PLAN AND PROFILE

DRAWING No.:
2B_17

SHEET No.: REV:
17 1



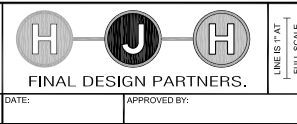
02/28/13 1:15:12 PM J.LACQUEMARTZ
 C:\PRESENTATIONS\EAST_LINKEL_FTA_ENV_DRAWINGS\EL_SEPA_ADD21_2B_21.DWG

No.	DATE	DSN	CHK	APP	REVISION

DESIGNED BY:
 R. MCKELVY
 DRAWN BY:
 B. NELSON
 CHECKED BY:
 B. WILLIAMS
 APPROVED BY:
 J. SCHEITLER



SUBMITTED BY:
 DATE:
 APPROVED BY:
 DATE:

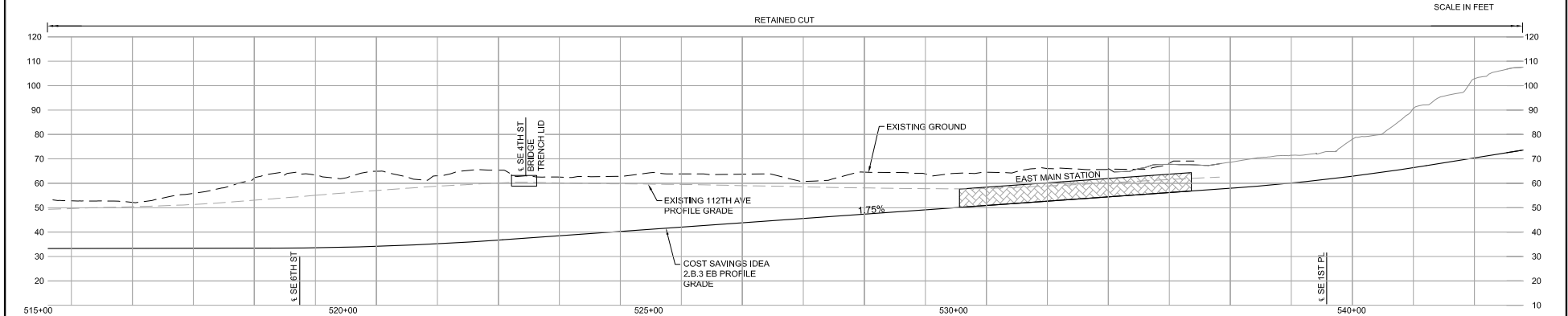
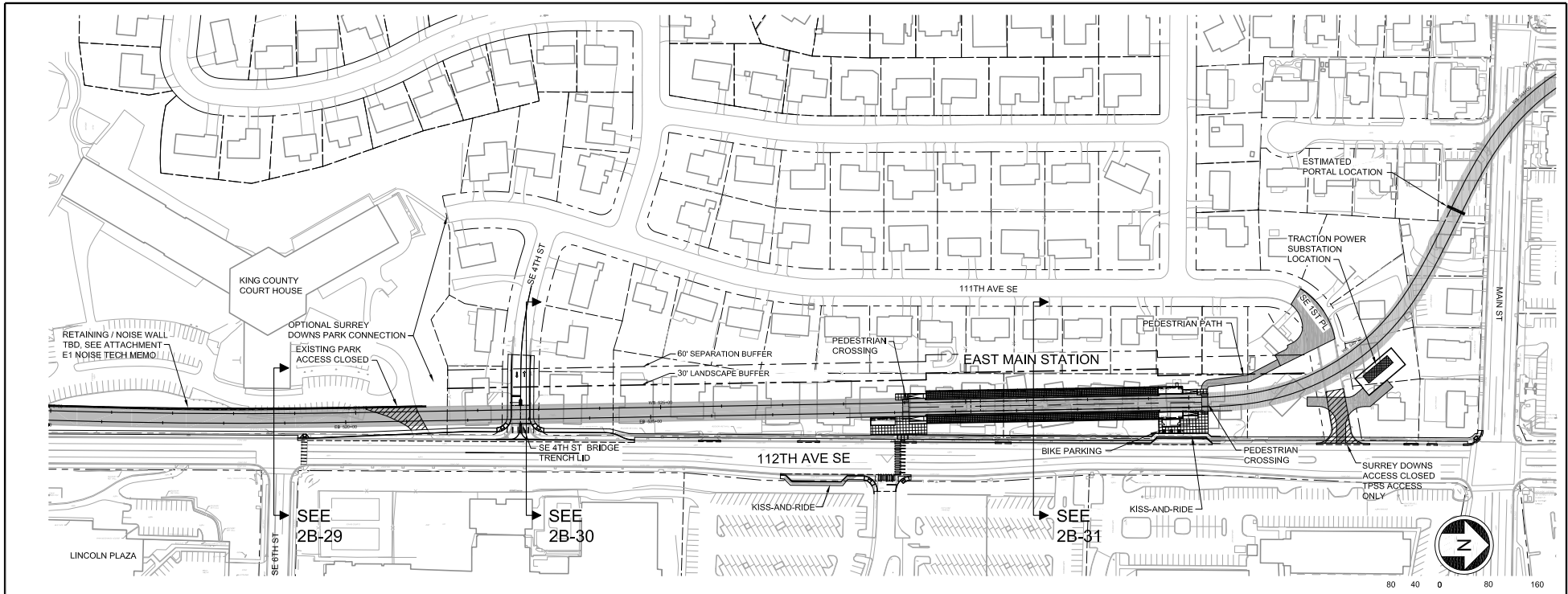


LINE & STAT
 FULL SCALE
 DATE:

SCALE:
 AS SHOWN
 FILENAME:
 21_2B_21.dwg
 CONTRACT UNIT (CUD):
 TO 5.15
 DATE:
 2/4/13

LINK LIGHT RAIL PROJECT
EAST CORRIDOR
BELLEVUE TO REDMOND
 112TH ROAD OVER RAIL - TRENCH UNDER 4TH
 PLAN AND PROFILE

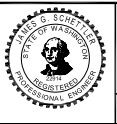
DRAWING No.:
2B-21
 SHEET No.: REV:
 21 1



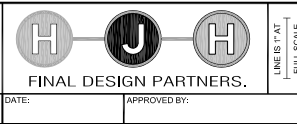
02/28/13 1:57:12 PM J.JACQUEMARTZ
 C:\PRESENTATIONS\EAST_LINKEL_FTA_ENV_DRAWINGS\EL_SEPA_ADD22_2B_22.DWG

No.	DATE	DSN	CHK	APP	REVISION

DESIGNED BY:
 R. MCKELVY
 DRAWN BY:
 B. NELSON
 CHECKED BY:
 B. WILLIAMS
 APPROVED BY:
 J. SCHEITTLER



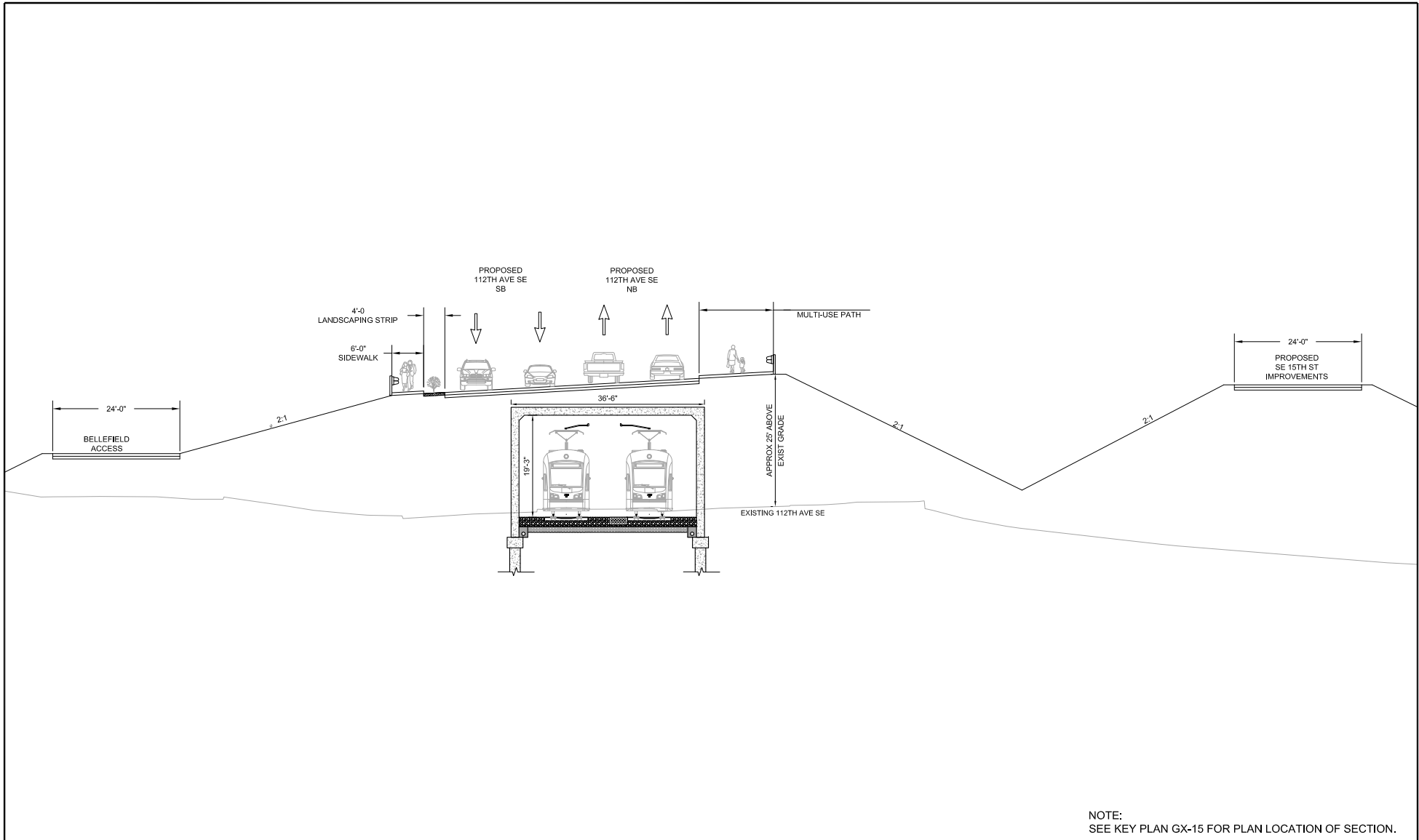
SUBMITTED BY:



SCALE: AS SHOWN
 FILENAME: 22_2B_22.dwg
 CONTRACT UNIT (CUD): TO 5.15
 DATE: 2/4/13

LINK LIGHT RAIL PROJECT
EAST CORRIDOR
 BELLEVUE TO REDMOND
 112TH ROAD OVER RAIL - TRENCH UNDER 4TH
 PLAN AND PROFILE

DRAWING No.: 2B-22
 SHEET No.: 22
 REV: 1



NOTE:
SEE KEY PLAN GX-15 FOR PLAN LOCATION OF SECTION.

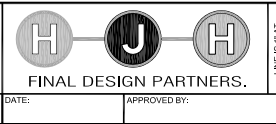
02/27/13, 1:15:12 PM, J. JACQUEMARTZ
C:\PRESENTATIONS\EAST_LINKEL_FTA_ENV_DRAWINGS\SEL_SEPA_A0223_08_23.DWG

No.	DATE	DSN	CHK	APP	REVISION

DESIGNED BY:
B. NELSON
DRAWN BY:
L. JOHNSON
CHECKED BY:
B. WILLIAMS
APPROVED BY:
J. SCHEITTLER



SUBMITTED BY:
DATE:
APPROVED BY:

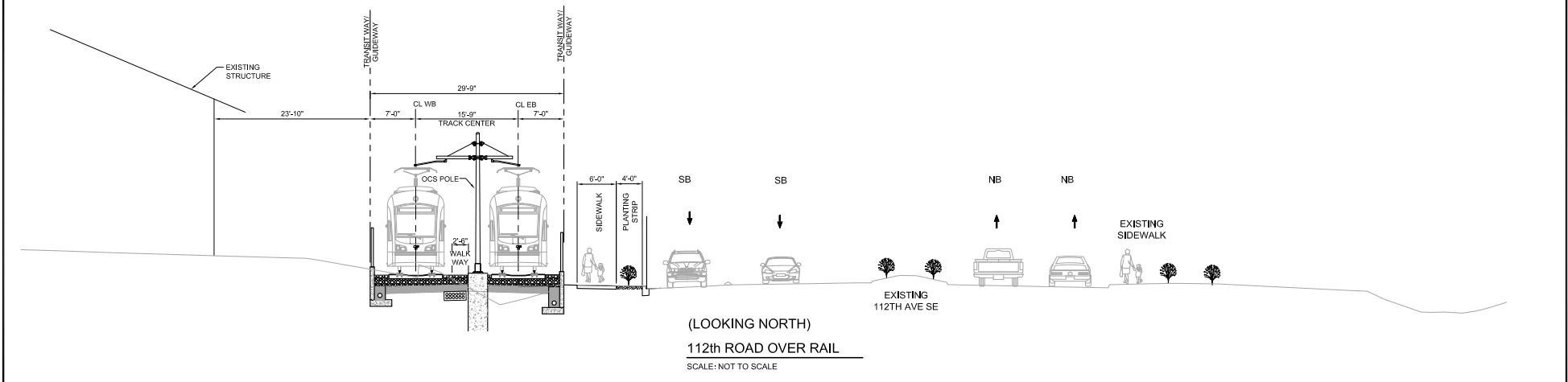
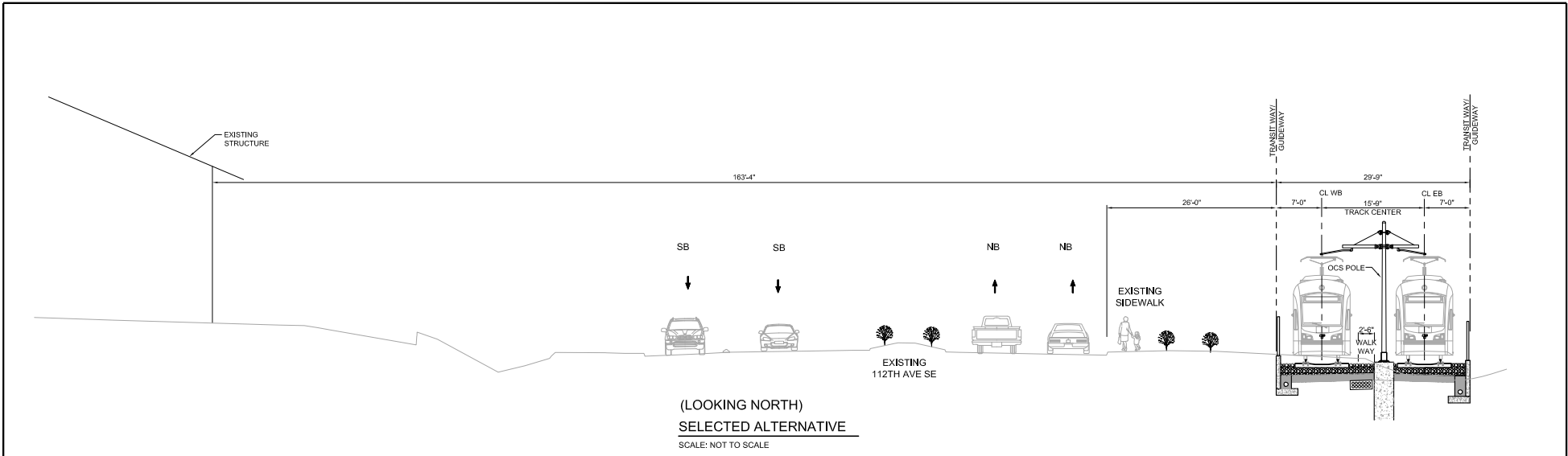


LINE & TYP
FULL SCALE
DATE:

SCALE:
NOT TO SCALE
FILENAME:
23_2B_23.dwg
CONTRACT UNIT (CUD):
TO 5.15
DATE:
2/4/13

LINK LIGHT RAIL PROJECT
EAST CORRIDOR
BELLEVUE TO REDMOND
112TH ROAD OVER RAIL - SE 4TH ST EMER. OPEN & TRENCH
IN VICINITY OF SE 15TH TYP SECTION

DRAWING No.:
2B_23
SHEET No.:
23
REV:
1



NOTE:
 SEE KEY PLAN GX-15 FOR PLAN LOCATION OF SECTION.

02/22/13 1:15:12 PM J. JACQUEMARTZ
 C:\PRESENTATIONS\EAST_LINKEL_JTA_ENV_DRAWINGS\EL_SEPA_ADD\24_08.dwg

No.	DATE	DSN	CHK	APP	REVISION

DESIGNED BY:	R. MCKELLY
DRAWN BY:	J. LOPEZ
CHECKED BY:	R. MCKELLY
APPROVED BY:	

SUBMITTED BY:	
DATE:	
APPROVED BY:	
DATE:	

FINAL DESIGN PARTNERS.

LINE & AT FULL SCALE

SOUNDTRANSIT

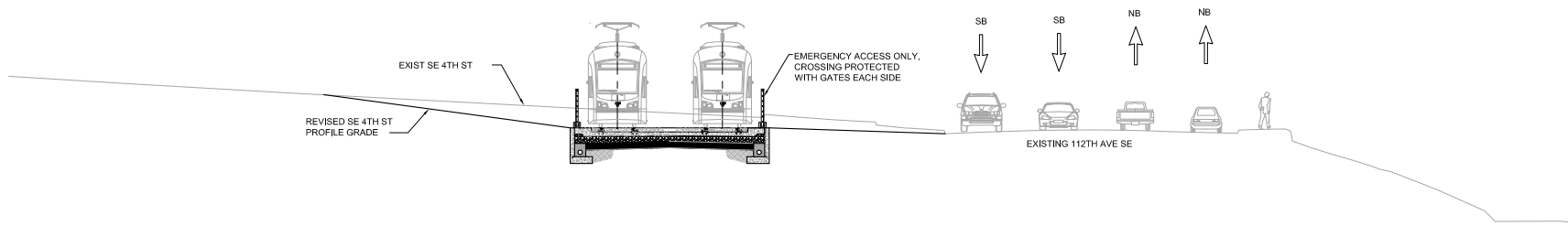
SCALE:	AS SHOWN
FILENAME:	24_2B_24.dwg
CONTRACT UNIT (CUD):	TO 5.15
DATE:	2/4/13

LINK LIGHT RAIL PROJECT
 EAST CORRIDOR
 BELLEVUE TO REDMOND




112TH ROAD OVER RAIL - SE 4TH ST EMER & OPEN ACCESS
 SOUTH OF SE 8TH TYP SECTION

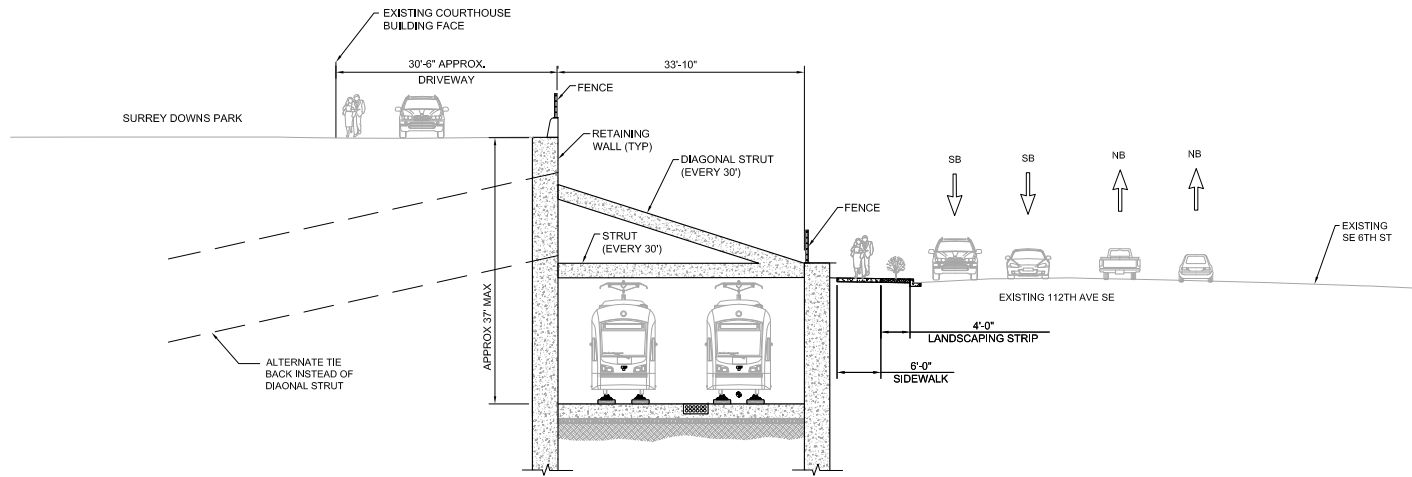
DRAWING No.:	2B_24
SHEET No.:	24
REV:	1

02/29/13 1:57:12 PM J.JACQUEMARTZ
 C:\PRESENTATIONS\EAST_LINKEL_FTA_ENV_DRAWINGS\SEL_SEPA_ADR\26_26.dwg



NOTE:
SEE KEY PLAN GX-15 FOR PLAN LOCATION OF SECTION.

					DESIGNED BY: B. NELSON		 FINAL DESIGN PARTNERS.	 SOUNDTRANSIT	SCALE: NOT TO SCALE	LINK LIGHT RAIL PROJECT EAST CORRIDOR BELLEVUE TO REDMOND 112TH ROAD OVER RAIL - SE 4TH ST EMERGENCY ACCESS SE 4TH TYP SECTION	DRAWING No.:
					DRAWN BY: L. JOHNSON				FILENAME: 26_26_26.dwg		2B-26
					CHECKED BY: B WILLIAMS				CONTRACT UNIT (CUD): TO 5.15		SHEET No.:
					APPROVED BY: J. SCHEITLER				DATE:		REV: 1
No.	DATE	DSN	CHK	APP	REVISION	SUBMITTED BY:	DATE:	APPROVED BY:	DATE:	2/4/13	



NOTE:
SEE KEY PLAN GX-15 FOR PLAN LOCATION OF SECTION.

02/26/13 1:57:12 PM J. JACQUEMARTZ
C:\PRESENTATIONS\EAST_NIKEL_JTA_ENV_DRAWINGS\EL_SFPA_ADD29_2B_23.DWG

No.	DATE	DSN	CHK	APP	REVISION

DESIGNED BY:
B. NELSON
DRAWN BY:
L. JOHNSON
CHECKED BY:
B. WILLIAMS
APPROVED BY:
J. SCHEITTLER



SUBMITTED BY:

DATE:

APPROVED BY:

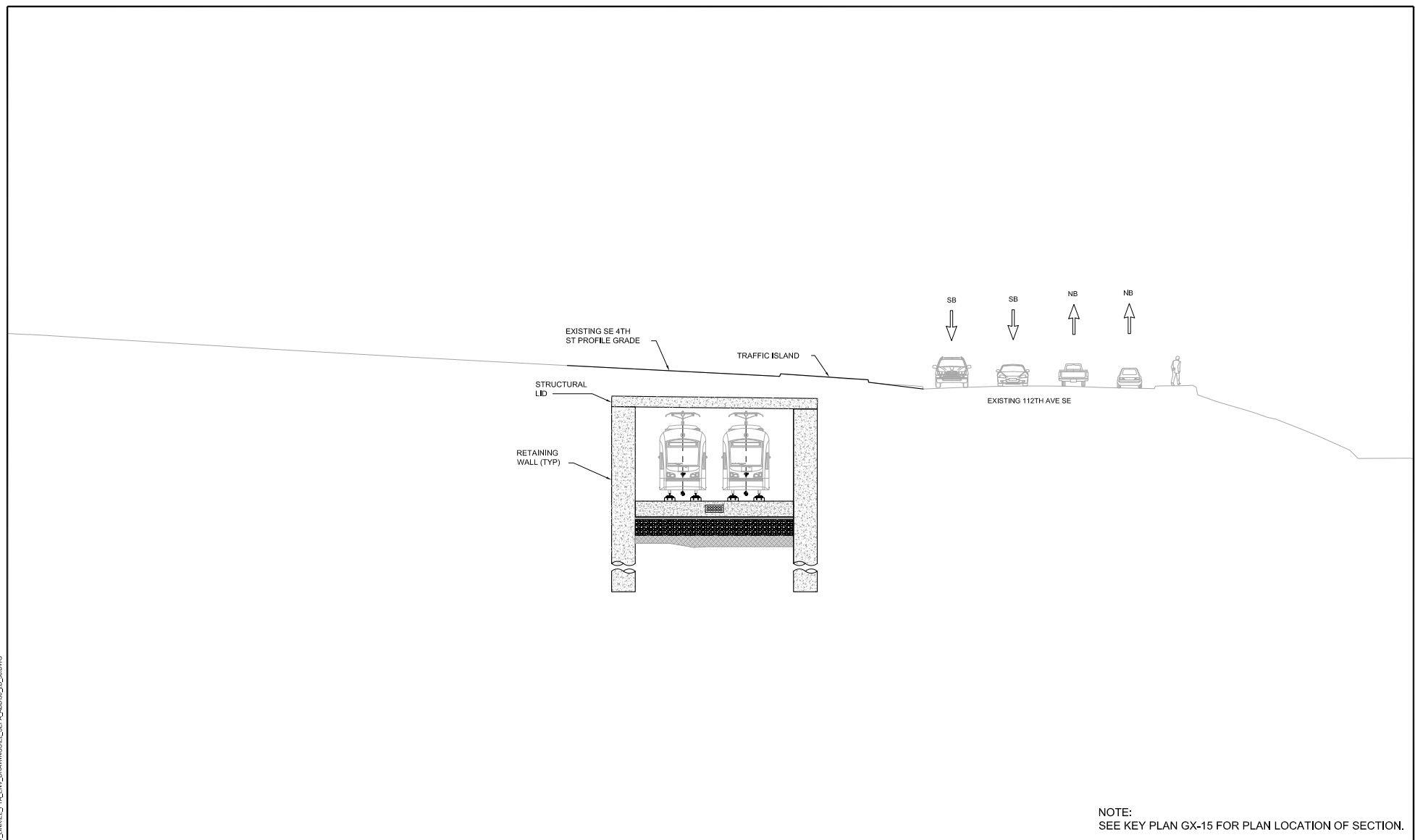
DATE:

SCALE:
NOT TO SCALE
FILENAME:
29_2B_29.dwg
CONTRACT UNIT (CUD):
TO 5.15
DATE:
2/4/13

LINK LIGHT RAIL PROJECT
EAST CORRIDOR
BELLEVUE TO REDMOND
112TH ROAD OVER RAIL - TRENCH UNDER 4TH
SE 6TH TYP SECTION

DRAWING No.:
2B-29
SHEET No.:
29
REV:
1

02/26/13 1:57:12 PM J.JACQUEMARTZ
 C:\PRESENTATIONS\EAST\INKEL\TTA_ENV_DRAWINGS\SEL_SEPA\ADD30_08_30.DWG



NOTE:
SEE KEY PLAN GX-15 FOR PLAN LOCATION OF SECTION.

No.	DATE	DSN	CHK	APP	REVISION

DESIGNED BY:
B. NELSON
 DRAWN BY:
L. JOHNSON
 CHECKED BY:
B WILLIAMS
 APPROVED BY:
J. SCHETTLER



SUBMITTED BY:

FINAL DESIGN PARTNERS.
 SOUNDTRANSIT

LINE ST AT
 FULL SCALE
 DATE:

SCALE:
 NOT TO SCALE
 FILENAME:
 30_2B_30.dwg
 CONTRACT UNIT (CUD):
 TO 5.15
 DATE:
 2/4/13

LINK LIGHT RAIL PROJECT
EAST CORRIDOR
BELLEVUE TO REDMOND
 112TH ROAD OVER RAIL - TRENCH UNDER 4TH
 SE 4TH TYP SECTION

DRAWING No.:
2B-30
 SHEET No.: REV:
 30 1