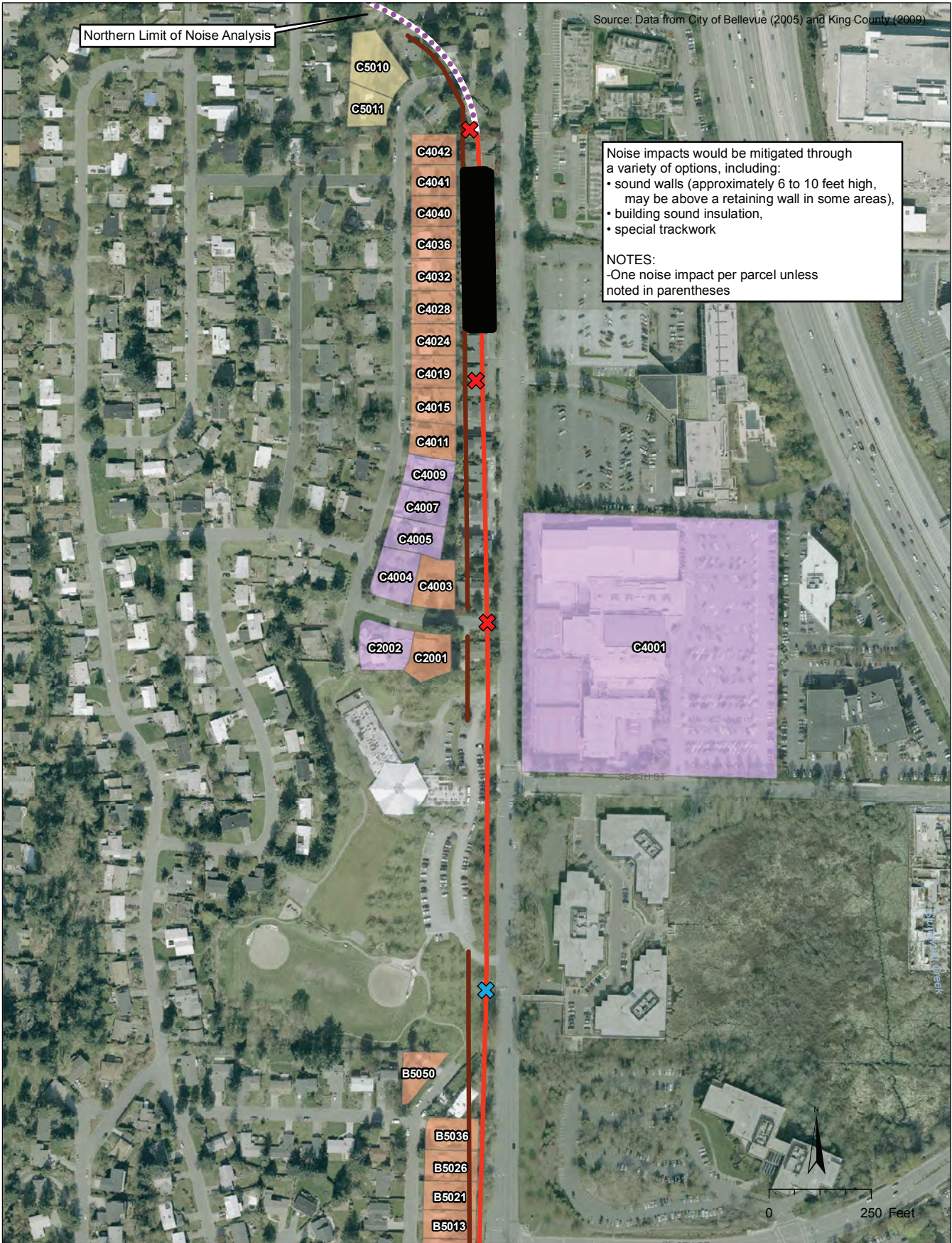


Source: Data from City of Bellevue (2005) and King County (2009)

Northern Limit of Noise Analysis



Noise impacts would be mitigated through a variety of options, including:

- sound walls (approximately 6 to 10 feet high, may be above a retaining wall in some areas),
- building sound insulation,
- special trackwork

NOTES:  
-One noise impact per parcel unless noted in parentheses

- |                     |                                       |                             |                                    |
|---------------------|---------------------------------------|-----------------------------|------------------------------------|
| At-Grade Route      | Proposed Noise Wall                   | Moderate Light Rail Impacts | Crossover Location                 |
| Elevated Route      | Proposed Station                      | Severe Light Rail Impacts   | Pedestrian Audible Warning Devices |
| Retained-Cut Route  | New and/or Expanded Park-and-Ride Lot | No Light Rail Impact        |                                    |
| Retained-Fill Route |                                       |                             |                                    |
| Tunnel Route        |                                       |                             |                                    |

**Exhibit E.1-5**  
**Noise Impacts, 112th Road Over Rail,**  
**SE 4th Open Suboption**  
 SEPA Addendum  
 East Link Project