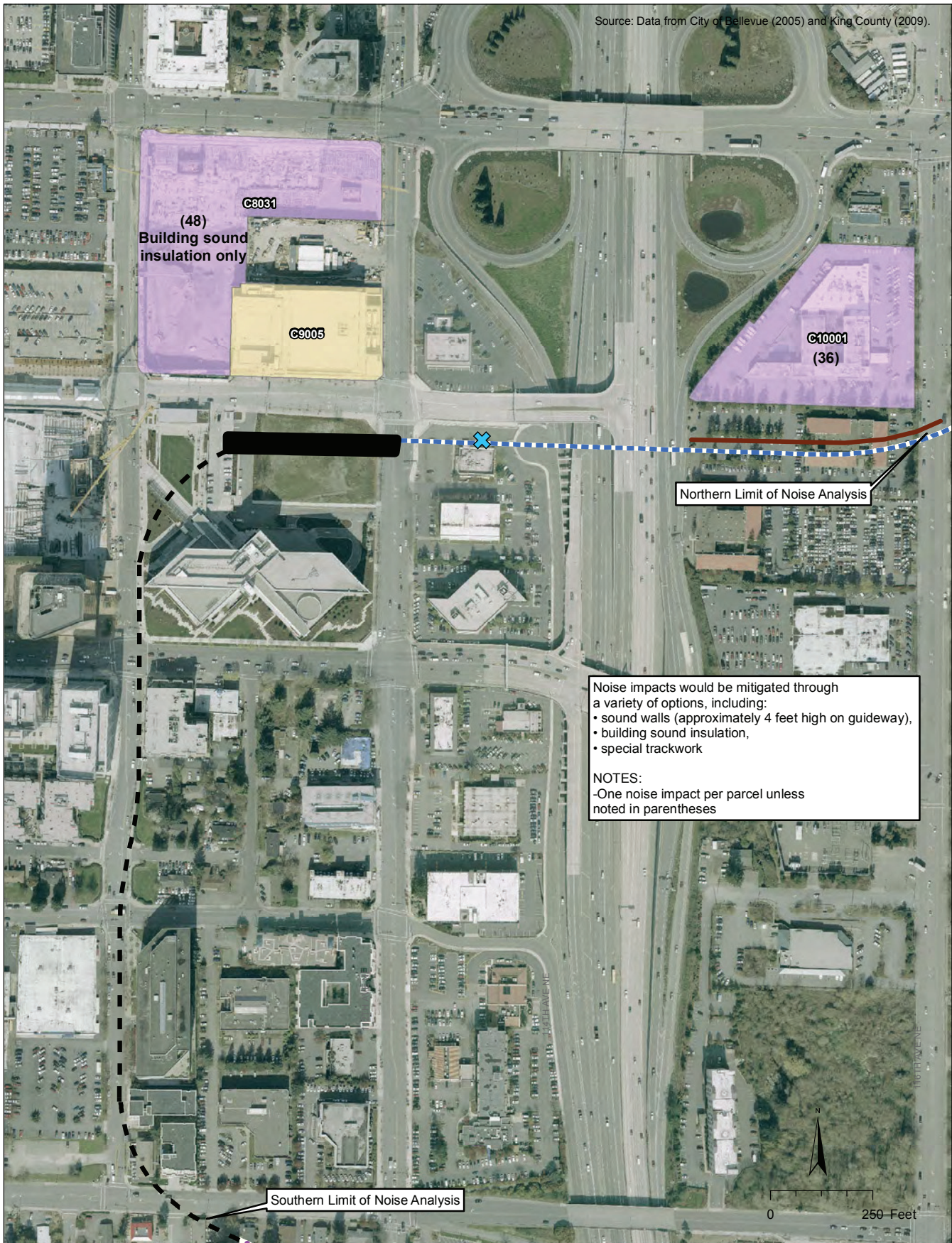


Source: Data from City of Bellevue (2005) and King County (2009).



Noise impacts would be mitigated through a variety of options, including:

- sound walls (approximately 4 feet high on guideway),
- building sound insulation,
- special trackwork

NOTES:

-One noise impact per parcel unless noted in parentheses

- | | | | |
|---|--|--|--|
| <ul style="list-style-type: none"> At-Grade Route Elevated Route Retained-Cut Route Retained-Fill Route Tunnel Route | <ul style="list-style-type: none"> Proposed Noise Wall Proposed Station New and/or Expanded Park-and-Ride Lot | <ul style="list-style-type: none"> Moderate Light Rail Impacts Severe Light Rail Impacts No Light Rail Impact | <ul style="list-style-type: none"> Crossover Location Pedestrian Audible Warning Devices |
|---|--|--|--|

**Exhibit E.1-7
Noise Impacts,
NE 6th Station
SEPA Addendum
East Link Project**