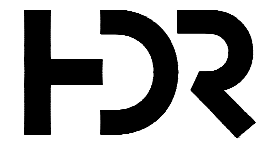


DRAFT EIS - CONCEPTUAL DESIGN SR 99 ALTERNATIVE



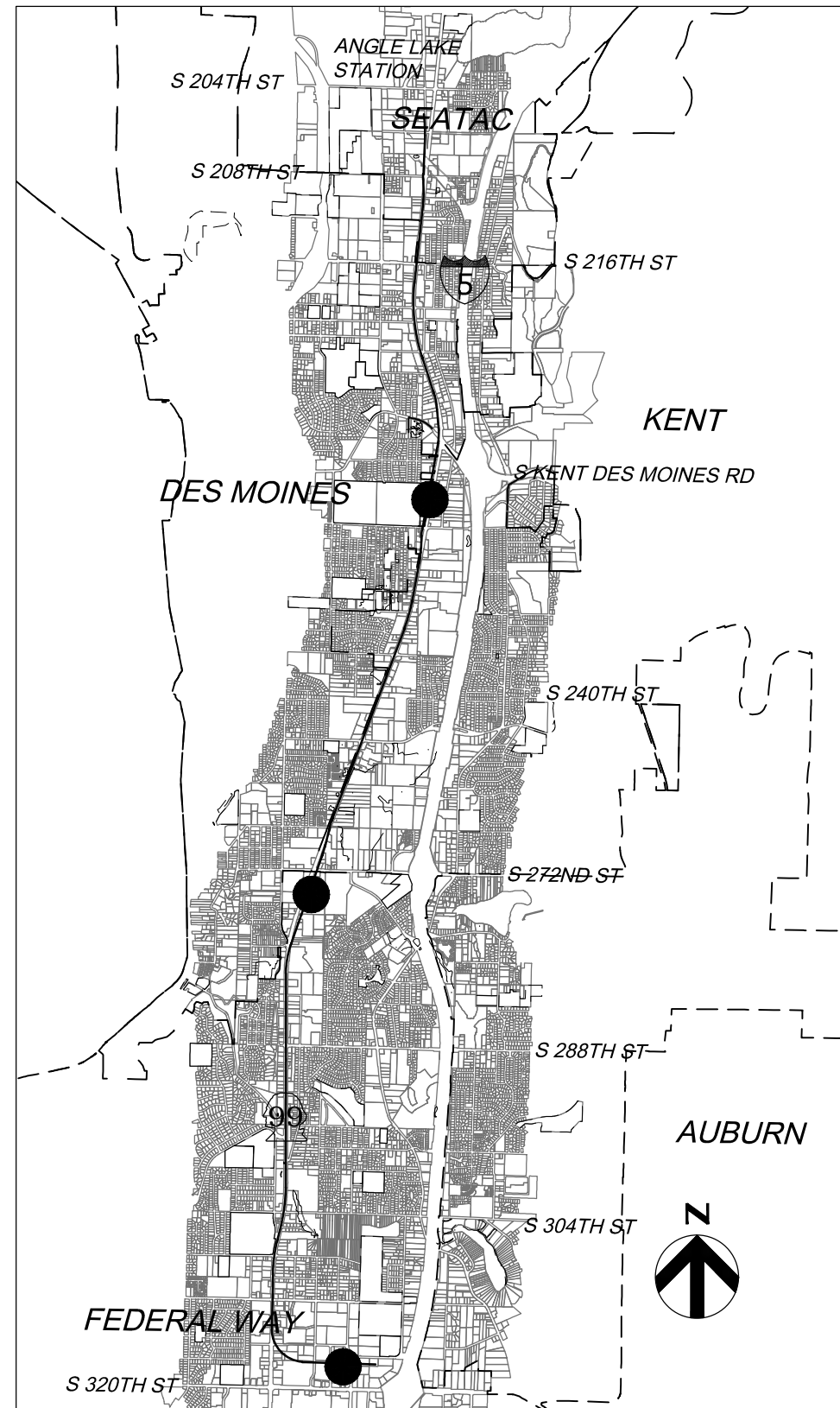
SOUND TRANSIT FEDERAL WAY LINK EXTENSION

DRAFT EIS CONCEPTUAL DESIGN SR 99 ALTERNATIVE

APRIL 2015

SHEET KEY

SR 99 ALTERNATIVE
S 216TH WEST STATION OPTION (POTENTIAL ADDITIONAL STATION)
S 216TH EAST STATION OPTION (POTENTIAL ADDITIONAL STATION)
KENT/DES MOINES HC CAMPUS STATION OPTION
KDM HC CAMPUS STATION OPTION FROM S 216TH WEST STATION OPTION
KENT/DES MOINES SR 99 EAST STATION OPTION
KENT/DES MOINES SR 99 MEDIAN STATION OPTION
S 260TH WEST STATION OPTION (POTENTIAL ADDITIONAL STATION)
S 260TH EAST STATION OPTION (POTENTIAL ADDITIONAL STATION)
S 272ND REDONDO TRENCH STATION OPTION
FEDERAL WAY SR 99 STATION OPTION



PROJECT LOCATION MAP

SOUND TRANSIT FEDERAL WAY LINK EXTENSION

Sheet No.	Drawing No.	Sheet Title
SR 99 ALTERNATIVE		
1	SR99-A00-GX00	COVER SHEET
2	SR99-A00-GX01	SHEET INDEX
3	SR99-A00-GX02	SHEET INDEX KEYMAP
4	SR99-A1-PP01	TRACK PLAN AND PROFILE STA 7+25 TO STA 30+00
5	SR99-A2-PP02	TRACK PLAN AND PROFILE STA 30+00 TO STA 56+00
6	SR99-A3-PP03	TRACK PLAN AND PROFILE STA 56+00 TO STA 82+00
7	SR99-A4-PP04	TRACK PLAN AND PROFILE STA 82+00 TO STA 108+00
8	SR99-A5-PP05	TRACK PLAN AND PROFILE STA 108+00 TO STA 134+00
9	SR99-A6-PP06	TRACK PLAN AND PROFILE STA 134+00 TO STA 160+00
10	SR99-A7-PP07	TRACK PLAN AND PROFILE STA 160+00 TO STA 186+00
11	SR99-A8-PP08	TRACK PLAN AND PROFILE STA 186+00 TO STA 212+00
12	SR99-A9-PP09	TRACK PLAN AND PROFILE STA 212+00 TO STA 238+00
13	SR99-A10-PP10	TRACK PLAN AND PROFILE STA 238+00 TO STA 264+00
14	SR99-A11-PP11	TRACK PLAN AND PROFILE STA 264+00 TO STA 290+00
15	SR99-A12-PP12	TRACK PLAN AND PROFILE STA 290+00 TO STA 316+00
16	SR99-A13-PP13	TRACK PLAN AND PROFILE STA 316+00 TO STA 342+00
17	SR99-A14-PP14	TRACK PLAN AND PROFILE STA 342+00 TO STA 368+00
18	SR99-A15-PP15	TRACK PLAN AND PROFILE STA 368+00 TO STA 394+00
19	SR99-A16-PP16	TRACK PLAN AND PROFILE STA 394+00 TO STA 419+15.90
20	FWLE_SR99_AP009	KENT DES MOINES SR99 WEST STATION - SITE PLAN
21	FWLE_SR99_AX009	KENT DES MOINES SR99 WEST STATION - SECTIONS
22	FWLE_SR99_AP007	S 272ND REDONDO STATION - SITE PLAN
23	FWLE_SR99_AX007	S 272ND REDONDO STATION - SECTIONS
24	FWLE_SR99_AP003	FEDERAL WAY TRANSIT CENTER STATION - SITE PLAN
25	FWLE_SR99_AX003	FEDERAL WAY TRANSIT CENTER STATION - SECTIONS
S 216TH WEST STATION OPTION (POTENTIAL ADDITIONAL STATION)		
26	SR99-B00-GX02	SHEET INDEX KEYMAP
27	SR99-B1-PP01	TRACK PLAN AND PROFILE STA 15+00 TO STA 30+00
28	SR99-B2-PP02	TRACK PLAN AND PROFILE STA 30+00 TO STA 56+00
29	SR99-B3-PP03	TRACK PLAN AND PROFILE STA 56+00 TO STA 82+36.28
30	FWLE_SR99_AP010	S 216TH WEST STATION OPTION - SITE PLAN
31	FWLE_SR99_AX010	S 216TH WEST STATION OPTION - SECTIONS
S 216TH EAST STATION OPTION (POTENTIAL ADDITIONAL STATION)		
32	SR99-C00-GX02	SHEET INDEX KEYMAP
33	SR99-C1-PP02	TRACK PLAN AND PROFILE STA 20+00 TO STA 34+00
34	SR99-C2-PP03	TRACK PLAN AND PROFILE STA 34+00 TO STA 59+91.74
35	FWLE_SR99_AP011	S 216TH EAST STATION OPTION - SITE PLAN
36	FWLE_SR99_AX011	S 216TH EAST STATION OPTION - SECTIONS
KENT/DES MOINES SR 99 MEDIAN STATION OPTION		
37	SR99-D00-GX02	SHEET INDEX KEYMAP
38	SR99-D1-PP04	TRACK PLAN AND PROFILE STA 10+00 TO STA 26+00
39	SR99-D2-PP05	TRACK PLAN AND PROFILE STA 26+00 TO STA 52+00
40	SR99-D3-PP06	TRACK PLAN AND PROFILE STA 52+00 TO STA 63+99.96
41	FWLE_S99_AP005	KENT/DES MOINES SR 99 MEDIAN STATION OPTION - SITE PLAN
42	FWLE_S99_AX005	KENT/DES MOINES SR 99 MEDIAN STATION OPTION - SECTIONS
KENT/DES MOINES SR99 EAST STATION OPTION		
43	SR99-E00-GX01	SHEET INDEX KEYMAP
44	SR99-E01-PP04	TRACK PLAN AND PROFILE STA 17+45.77 TO STA 41+00
45	SR99-E02-PP05	TRACK PLAN AND PROFILE STA 41+00 TO STA 67+00
46	SR99-E03-PP06	TRACK PLAN AND PROFILE STA 67+00 TO STA 93+00
47	SR99-E04-PP07	TRACK PLAN AND PROFILE STA 93+00 TO STA 107+68.31
48	FWLE_SR99_AP006	KENT/DES MOINES SR 99 EAST STATION OPTION - SITE PLAN
49	FWLE_SR99_AX006	KENT/DES MOINES SR 99 EAST STATION OPTION - SECTIONS

KENT/DES MOINES HC CAMPUS STATION OPTION		
50	SR99-F00-GX02	SHEET INDEX KEYMAP
51	SR99-F1-PP03	TRACK PLAN AND PROFILE STA 20+00 TO STA 45+00
52	SR99-F2-PP04	TRACK PLAN AND PROFILE STA 45+00 TO STA 71+00
53	SR99-F3-PP05	TRACK PLAN AND PROFILE STA 71+00 TO STA 97+00
54	SR99-F4-PP06	TRACK PLAN AND PROFILE STA 97+00 TO STA 122+00
55	SR99-F5-PP07	TRACK PLAN AND PROFILE STA 122+00 TO STA 134+88.36
56	FWLE_S99_AP004	KENT/DES MOINES HC CAMPUS STATION OPTION - SITE PLAN
57	FWLE_S99_AX004	KENT/DES MOINES HC CAMPUS STATION OPTION - SECTIONS
KENT/DES MOINES HC CAMPUS STATION OPTION FROM S. 216TH WEST STATION OPTION		
58	SR99-F00-GX02	SHEET INDEX KEY MAP
59	SR99-F6-PP01	TRACK PLAN AND PROFILE STA 15+00 TO STA 30+00
60	SR99-F7-PP02	TRACK PLAN AND PROFILE STA 30+00 TO STA 56+00
61	SR99-F8-PP03	TRACK PLAN AND PROFILE STA 56+00 TO STA 82+00
62	SR99-F9-PP04	TRACK PLAN AND PROFILE STA 82+00 TO STA 108+00
63	SR99-F10-PP05	TRACK PLAN AND PROFILE STA 108+00 TO STA 121+52.74
S 260TH WEST STATION OPTION (POTENTIAL ADDITIONAL STATION)		
64	SR99-G00-GX02	SHEET INDEX KEYMAP
65	SR99-G1-PP05	TRACK PLAN AND PROFILE STA 20+00 TO STA 23+00
66	SR99-G2-PP06	TRACK PLAN AND PROFILE STA 23+00 TO STA 49+00
67	SR99-G3-PP07	TRACK PLAN AND PROFILE STA 49+00 TO STA 75+00
68	SR99-G4-PP08	TRACK PLAN AND PROFILE STA 75+00 TO STA 101+00
69	SR99-G5-PP09	TRACK PLAN AND PROFILE STA 101+00 TO STA 111+87.66
70	FWLE_S99_AP013	S 260TH WEST STATION OPTION - SITE PLAN
71	FWLE_S99_AX013	S 260TH WEST STATION OPTION - SECTIONS
S 260TH EAST STATION OPTION (POTENTIAL ADDITIONAL STATION)		
72	SR99-H00-GX02	SHEET INDEX KEYMAP
73	SR99-H1-PP07	TRACK PLAN AND PROFILE STA 20+00 TO STA 23+00
74	SR99-H2-PP08	TRACK PLAN AND PROFILE STA 23+00 TO STA 49+00
75	SR99-H3-PP09	TRACK PLAN AND PROFILE STA 49+00 TO STA 75+00
76	SR99-H4-PP10	TRACK PLAN AND PROFILE STA 75+00 TO STA 80+98.42
77	FWLE_S99_AP012	S 260TH EAST STATION OPTION - SITE PLAN
78	FWLE_S99_AX012	S 260TH EAST STATION OPTION - SECTIONS
I - NOT USED		
S 272ND REDONDO TRENCH STATION OPTION		
79	SR99-J00-GX02	SHEET INDEX KEYMAP
80	SR99-J1-PP08	TRACK PLAN AND PROFILE STA 20+00 TO STA 31+00
81	SR99-J2-PP09	TRACK PLAN AND PROFILE STA 31+00 TO STA 57+00
82	SR99-J3-PP10	TRACK PLAN AND PROFILE STA 57+00 TO STA 83+00
83	SR99-J4-PP11	TRACK PLAN AND PROFILE STA 83+00 TO STA 109+00
84	SR99-J5-PP12	TRACK PLAN AND PROFILE STA 109+00 TO STA 136+00
85	SR99-J6-PP13	TRACK PLAN AND PROFILE STA 135+00 TO STA 161+00
86	SR99-J7-PP14	TRACK PLAN AND PROFILE STA 161+00 TO STA 174+00.00
87	FWLE_S99_AP002	S 272ND REDONDO TRENCH STATION OPTION - SITE PLAN
88	FWLE_S99_AX002	S 272ND REDONDO TRENCH STATION OPTION - SECTIONS
FEDERAL WAY SR 99 STATION OPTION		
89	SR99-K00-GX02	SHEET INDEX KEYMAP
90	SR99-K1-PP15	TRACK PLAN AND PROFILE STA 20+00 TO STA 44+00
91	SR99-K2-PP16	TRACK PLAN AND PROFILE STA 44+00 TO STA 51+23.50
92	FWLE_S99_AP008	FEDERAL WAY SR 99 STATION OPTION - SITE PLAN
93	FWLE_S99_AX008	FEDERAL WAY SR 99 STATION OPTION - SECTIONS

ABBREVIATIONS

B BP	BEGIN POINT
C CTR CL CS	CENTER CENTERLINE CURVE TO SPIRAL
D DO DWG	DESIGN OPTION DRAWING
E E EL EP EX	EAST/ELECTRICAL ELEVATION END POINT EXISTING
F FWLE FWTC	FEDERAL WAY LINK EXTENSION FEDERAL WAY TRANSIT CENTER
G G	GAS
H HC HORZ	HIGHLINE COLLEGE HORIZONTAL
K KC KCM KDM Kv	KING COUNTY KING COUNTY METRO KENT/DES MOINES KILOVOLTS
M MPH	MILES PER HOUR
N N NB	NORTH NORTHBOUND
O OE	OVERHEAD ELECTRICAL
P PC PL PS PT PVC PVI PVT	POINT OF CURVATURE PLACE POINT OF SWITCH POINT OF TANGENCY POINT OF VERTICAL CURVATURE POINT OF VERTICAL INTERSECTION POINT OF VERTICAL TANGENCY
R R RD ROW	RADUIIS ROAD RIGHT OF WAY
S S SB SC SF SR ST	SOUTH SOUTH BOUND SPIRAL TO CURVE SQUARE FEET STATE ROUTE STREET, SPIRAL TO TANGENT, or SOUND TRANSIT STATION
T TPSS TS TYP	TRACTION POWER SUBSTATION TANGENT TO SPIRAL TYPICAL
V V	VELOCITY

EXISTING FEATURES

	RIGHT OF WAY LINE
	LOT LINE
	GAS
	OVERHEAD ELECTRICAL
	UNDERGROUND ELECTRICAL
	WETLAND
	STREAM
	TRACK CENTERLINE
	EXISTING GROUND (PROFILE)
	CONTOUR LINE

PROPOSED FEATURES

	PROPOSED WSDOT ROW
	CITY LIMITS
	CONSTRUCTION FOOTPRINT
	GUIDEWAY CENTERLINE
	CURB AND SIDEWALK
	BOTTOM OF STRUCTURE (PROFILE)
	TOP OF RAIL (PROFILE)
	STATION PLATFORM
	AT-GRADE /TRENCH (BALLASTED) TRACK
	ELEVATED GUIDEWAY
	COLUMNS / STRADDLE BENTS
	LONG SPAN COLUMNS
	HEAD WALL
	TPSS BUILDING
	NEW SIGNAL

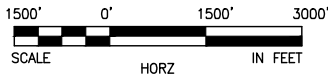


SOUND TRANSIT FEDERAL WAY LINK EXTENSION

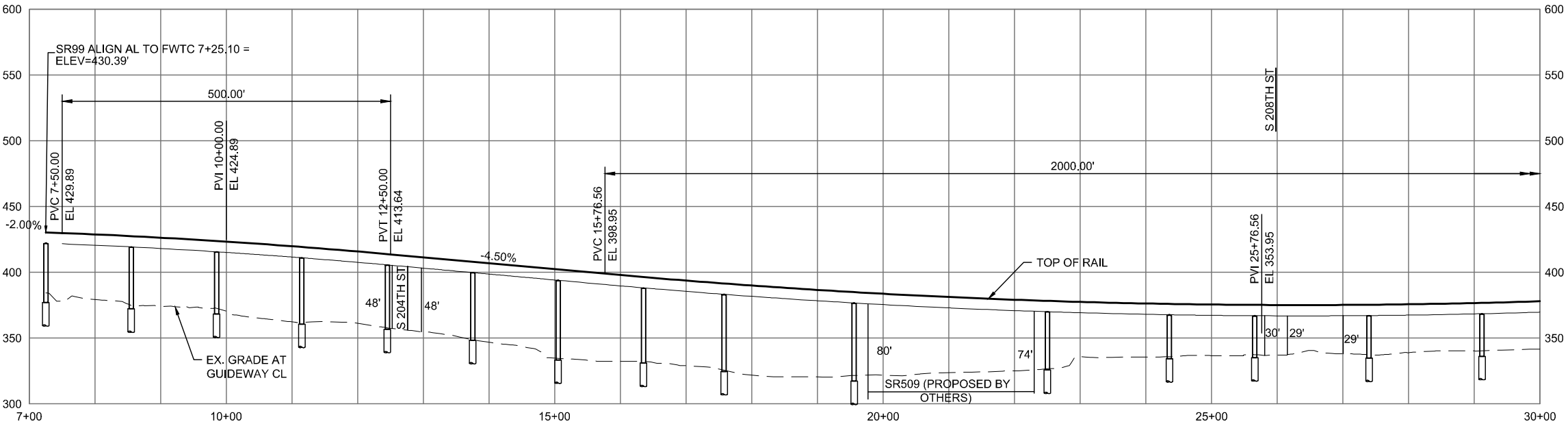
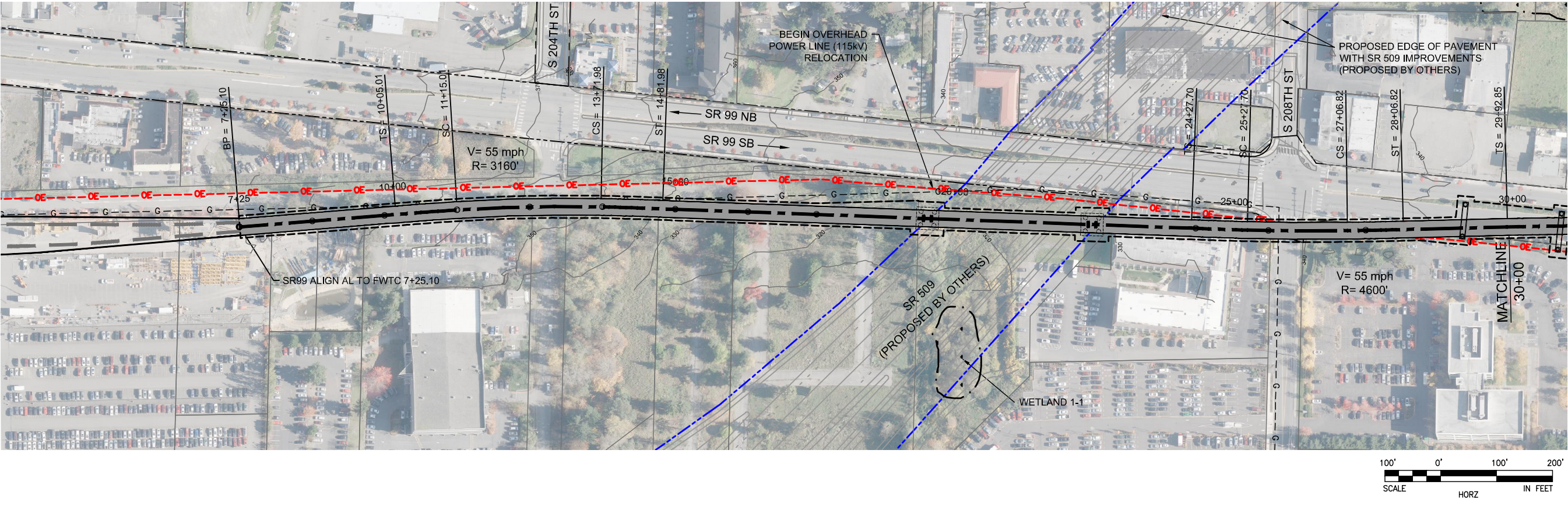


SR99 SHEET LAYOUT MATRIX																
	1	2	3	4	5	6	7	8	9	10	11	12	13	14	15	16
A - SR 99 ALTERNATIVE	X	X	X	X	X	X	X	X	X	X	X	X	X	X	X	X
B - S 216TH WEST STATION OPTION (POTENTIAL ADDITIONAL STATION)	X	X	X													
C - S 216TH EAST STATION OPTION (POTENTIAL ADDITIONAL STATION)		X	X													
D - KENT/DES MOINES SR 99 MEDIAN STATION OPTION				X	X	X										
E - KENT/DES MOINES SR 99 EAST STATION OPTION				X	X	X	X									
F - KENT/DES MOINES HC CAMPUS STATION OPTION			X	X	X	X	X									
F - KDM HC CAMPUS OPTION FROM S 216TH WEST STATION OPTION						X	X	X	X	X						
G - S 260TH WEST STATION OPTION (POTENTIAL ADDITIONAL STATION)					X	X	X	X	X							
H - S 260TH EAST STATION OPTION (POTENTIAL ADDITIONAL STATION)							X	X	X	X						
J - S 272ND REDONDO TRENCH STATION OPTION								X	X	X	X	X	X	X		
K - FEDERAL WAY SR 99 STATION OPTION															X	X

I - NOT USED



SOUND TRANSIT FEDERAL WAY LINK EXTENSION



2/25/2015 2:19:35 PM C:\P\WORKING\SEAD\114119A_P\FILE SR99 MAINLINE.DWG CFOX

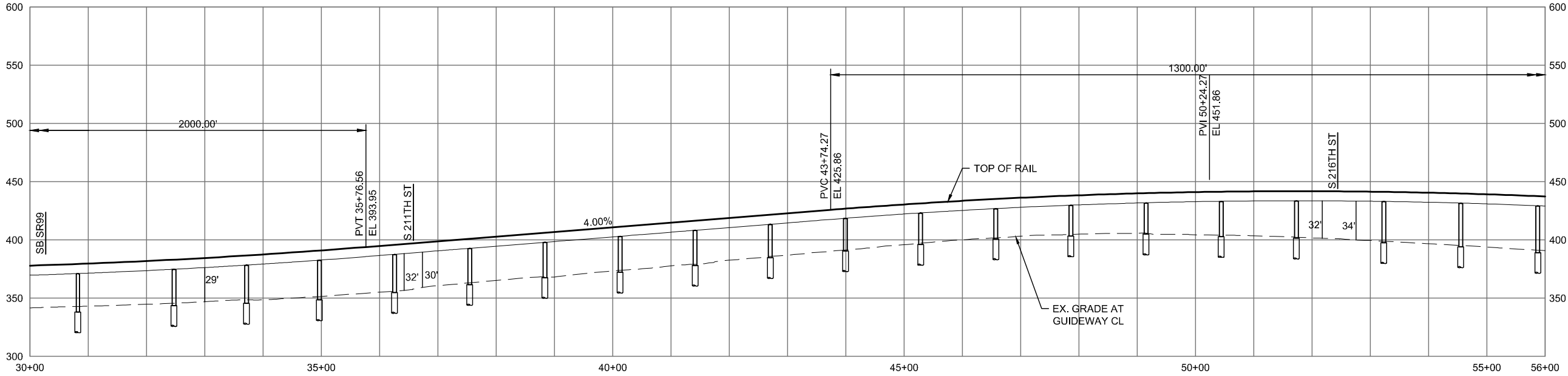
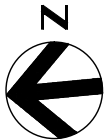
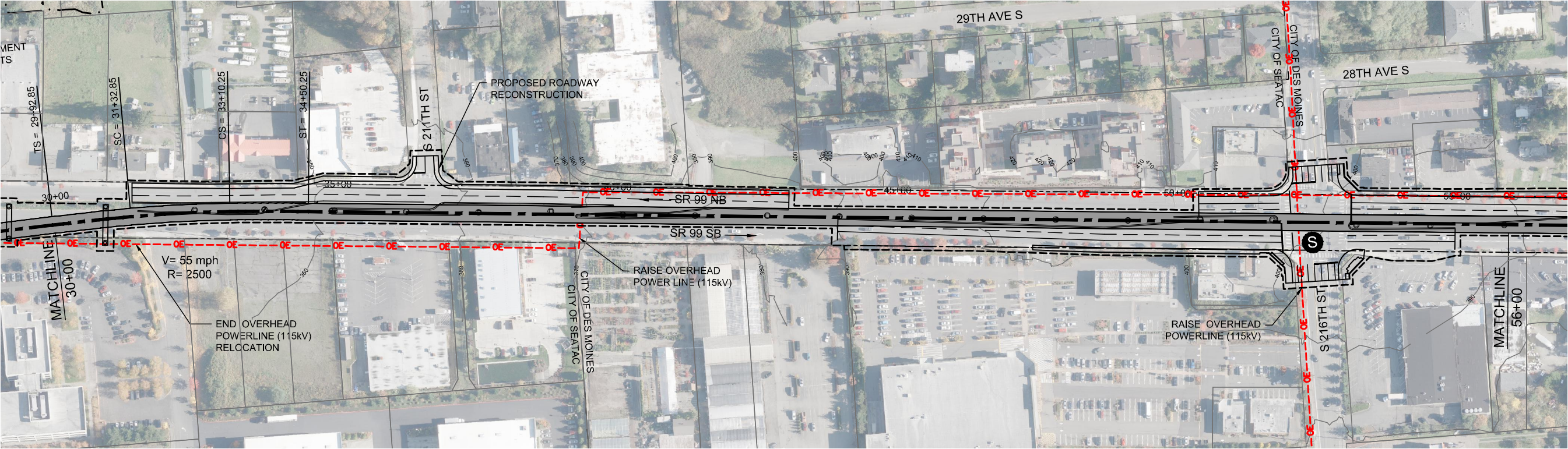


DRAFT EIS - CONCEPTUAL DESIGN
TRACK PLAN & PROFILE AND ROADWAY RECONSTRUCTION
SR 99 ALTERNATIVE
STA 7+25 TO STA 30+00

APRIL 2015

SR99-A1-PP01
4

SOUND TRANSIT FEDERAL WAY LINK EXTENSION



2/25/2015 2:01:14 PM C:\WORKING\SEAD\114119A_P\FILE SR99 MAINLINE.DWG C:\OX

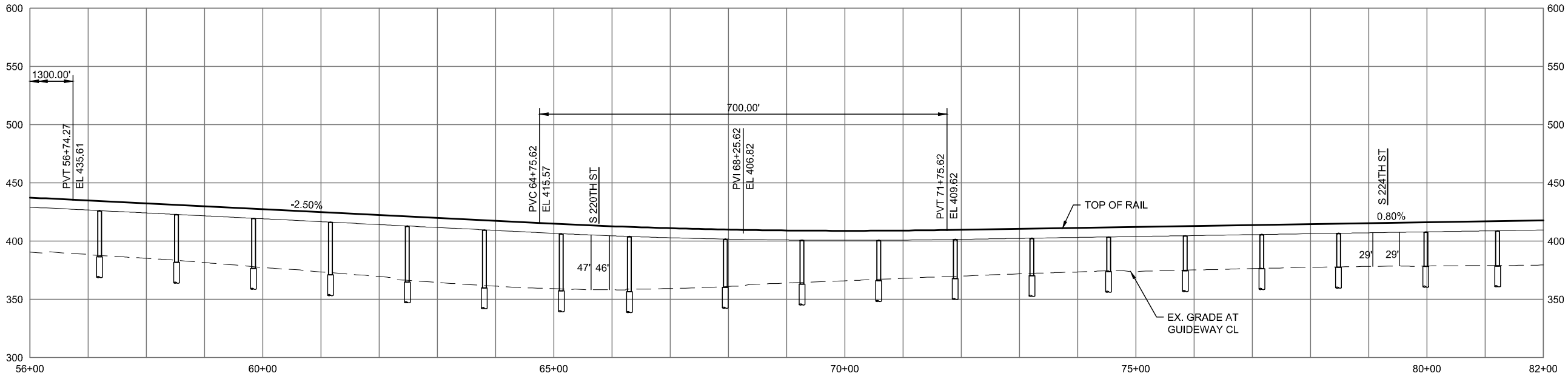
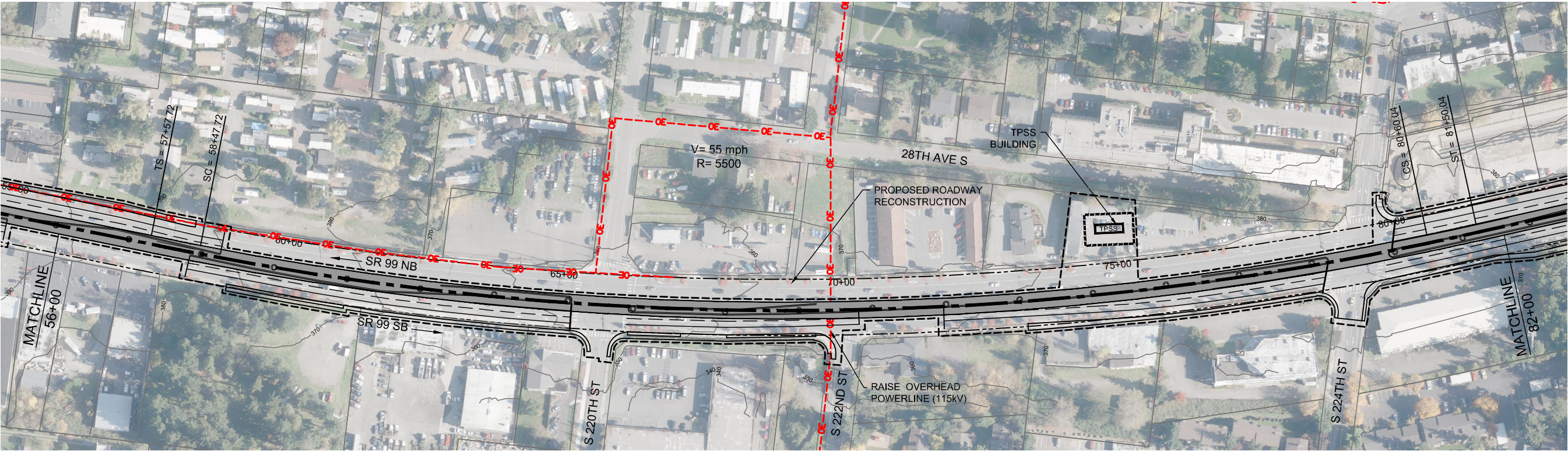


DRAFT EIS - CONCEPTUAL DESIGN
TRACK PLAN & PROFILE AND ROADWAY RECONSTRUCTION
SR 99 ALTERNATIVE
STA 30+00 TO STA 56+00

APRIL 2015

SR99-A2-PP02
5

SOUND TRANSIT FEDERAL WAY LINK EXTENSION



2/25/2015 2:20:36 PM C:\WORKING\SEAD\114119A_PVI_E SR99_MAINLINE.DWG C:\OX

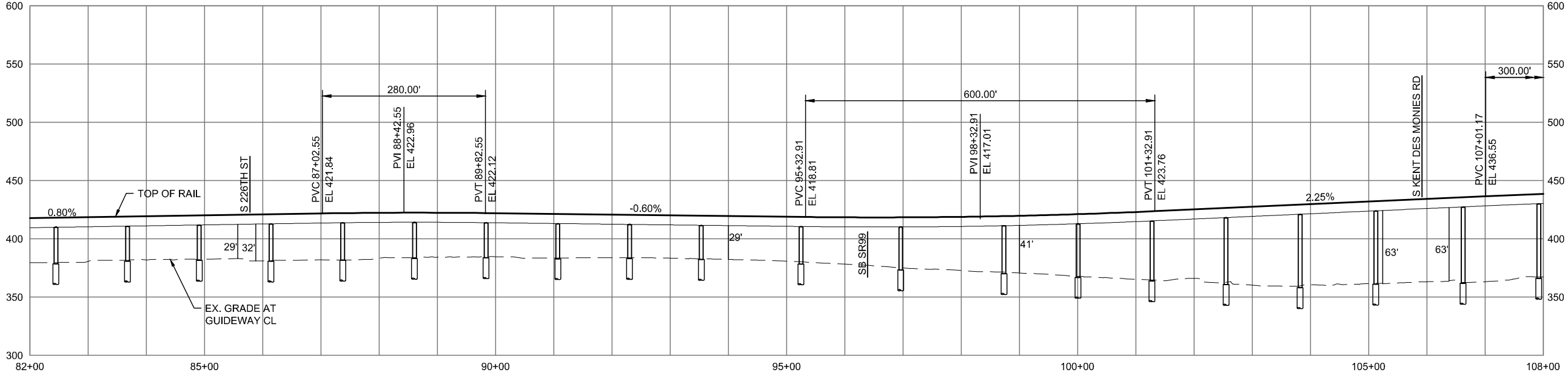
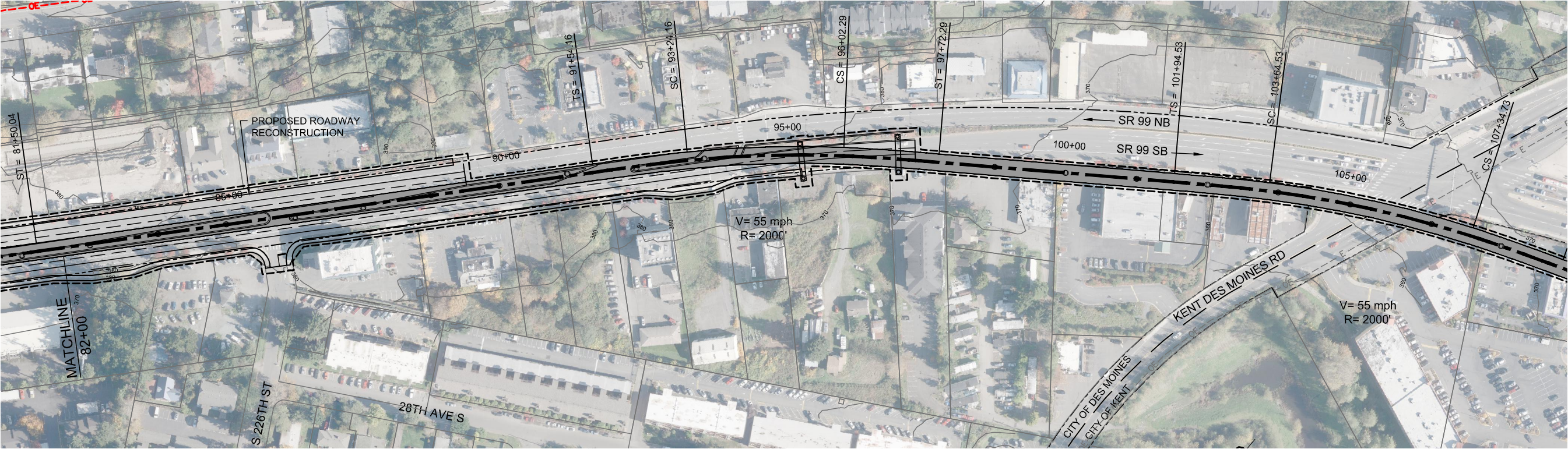


DRAFT EIS - CONCEPTUAL DESIGN
TRACK PLAN & PROFILE AND ROADWAY RECONSTRUCTION
SR 99 ALTERNATIVE
STA 56+00 TO STA 82+00

APRIL 2015

SR99-A3-PP03
6

SOUND TRANSIT FEDERAL WAY LINK EXTENSION



2/25/2015 2:21:00 PM C:\P\WORKING\SEAD\114119A_P\FILE SR99 MAINLINE.DWG CFOX

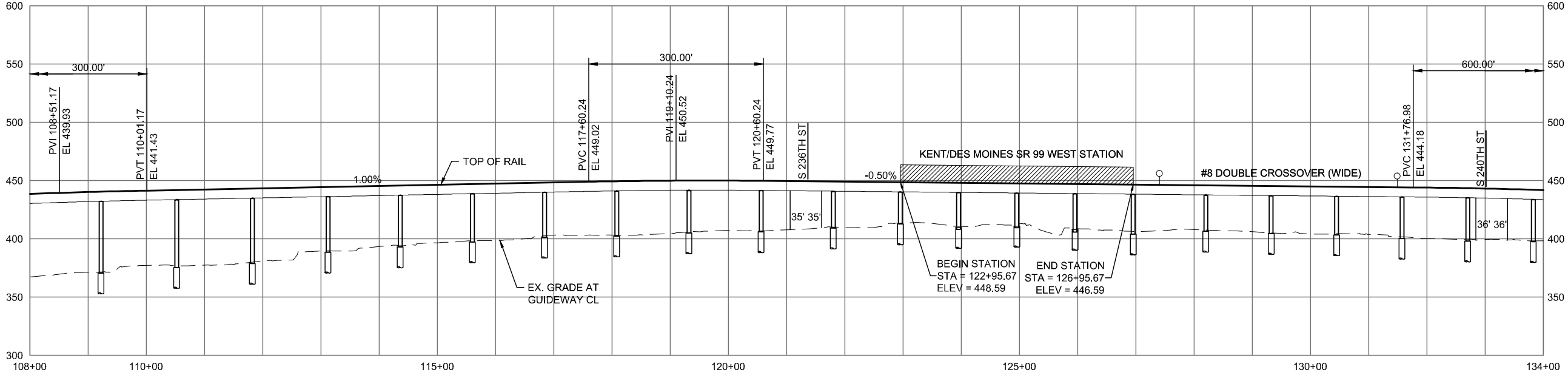
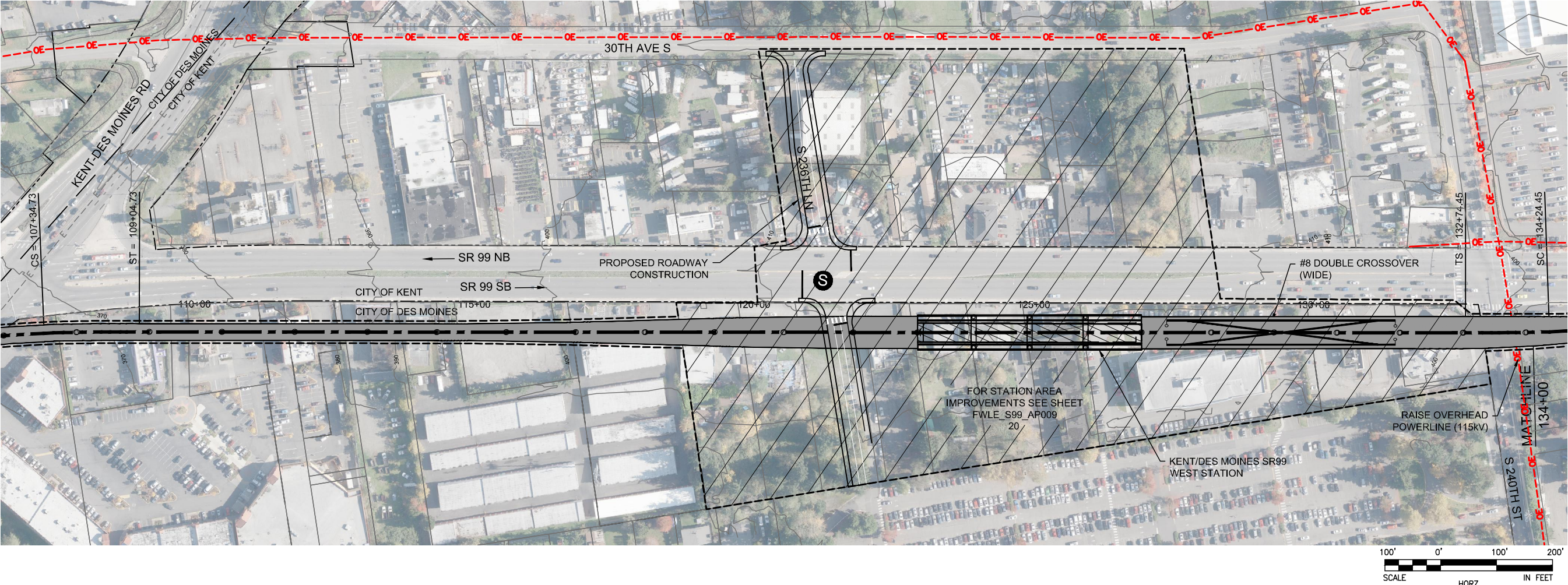


DRAFT EIS - CONCEPTUAL DESIGN
TRACK PLAN & PROFILE AND ROADWAY RECONSTRUCTION
SR 99 ALTERNATIVE
STA 82+00 TO STA 108+00

APRIL 2015

SR99-A4-PP04
7

SOUND TRANSIT FEDERAL WAY LINK EXTENSION



2/25/2015 2:21:22 PM C:\P\WORKING\SEAD\114119A_P\FILE_S999_MAINLINE.DWG C:\P\

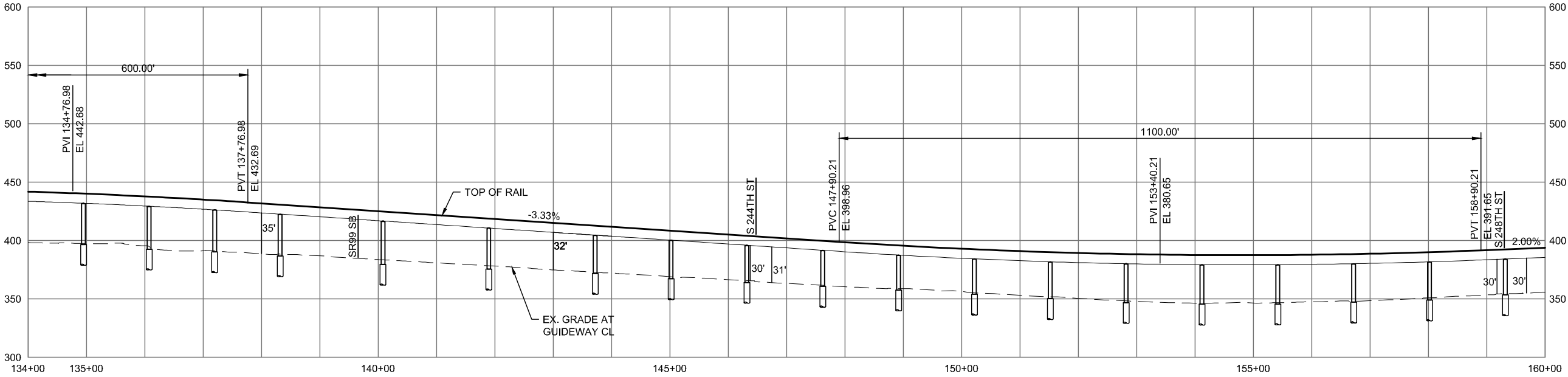
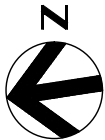
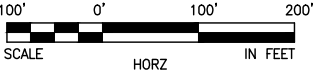
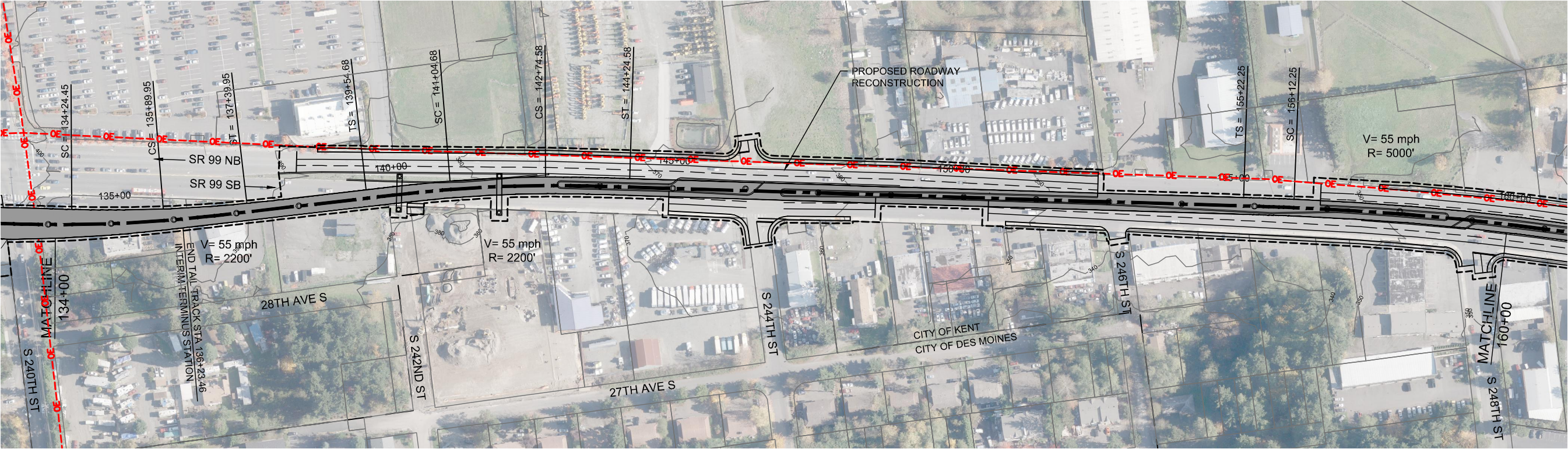


DRAFT EIS - CONCEPTUAL DESIGN
TRACK PLAN & PROFILE AND ROADWAY RECONSTRUCTION
SR 99 ALTERNATIVE
STA 108+00 TO STA 134+00

APRIL 2015

SR99-A5-PP05
8

SOUND TRANSIT FEDERAL WAY LINK EXTENSION



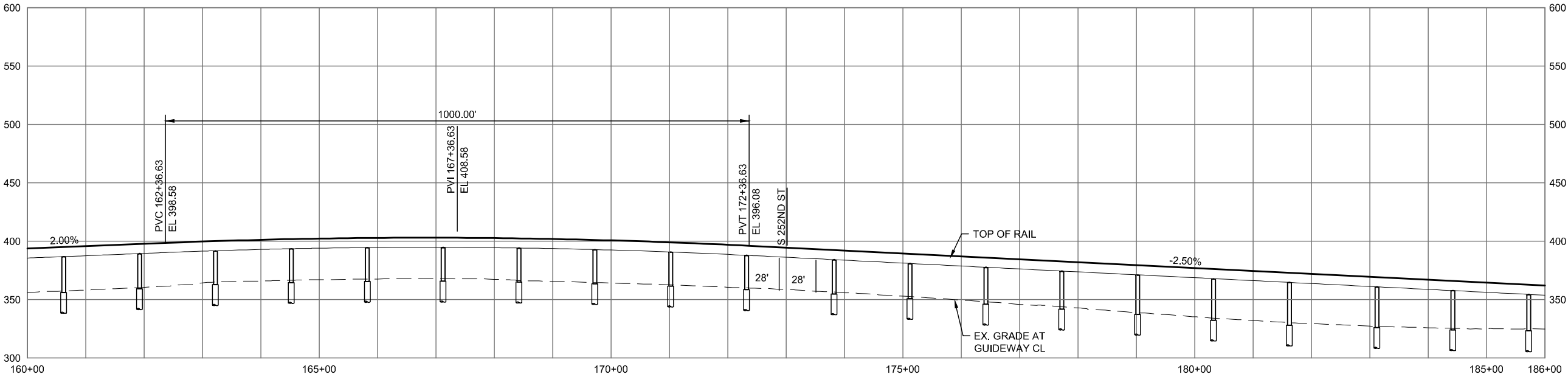
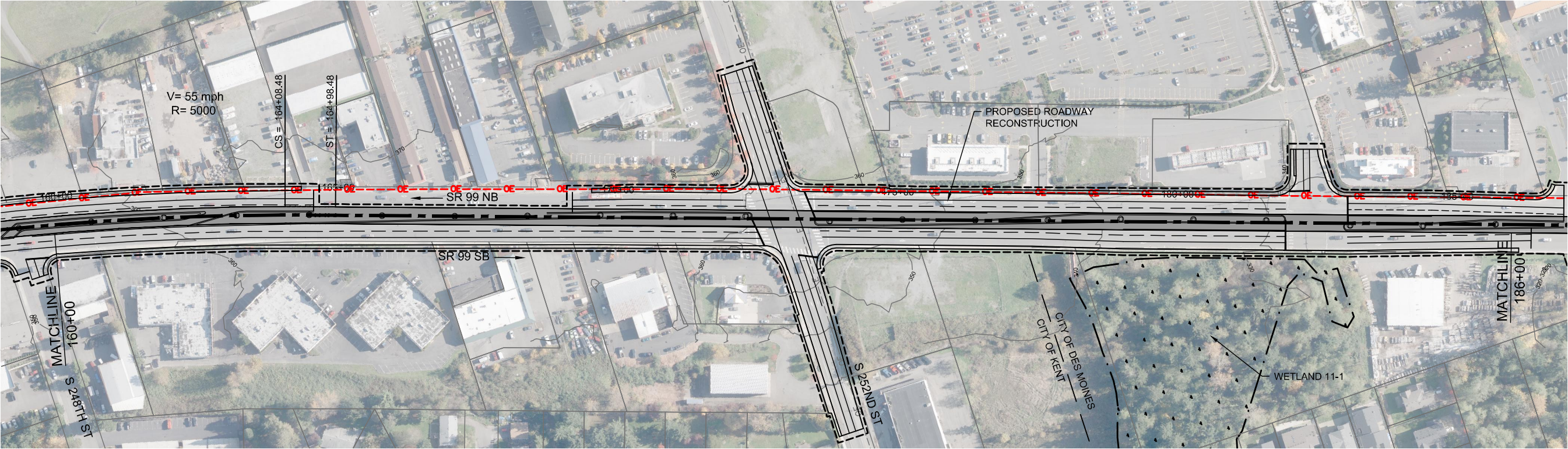
DRAFT EIS - CONCEPTUAL DESIGN
TRACK PLAN & PROFILE AND ROADWAY RECONSTRUCTION
SR 99 ALTERNATIVE
STA 134+00 TO STA 160+00

APRIL 2015

SR99-A6-PP06
9



SOUND TRANSIT FEDERAL WAY LINK EXTENSION



2/25/2015 2:22:09 PM
C:\P\WORKING\SEAD\111119A_P\FILE SR99 MAINLINE.DWG

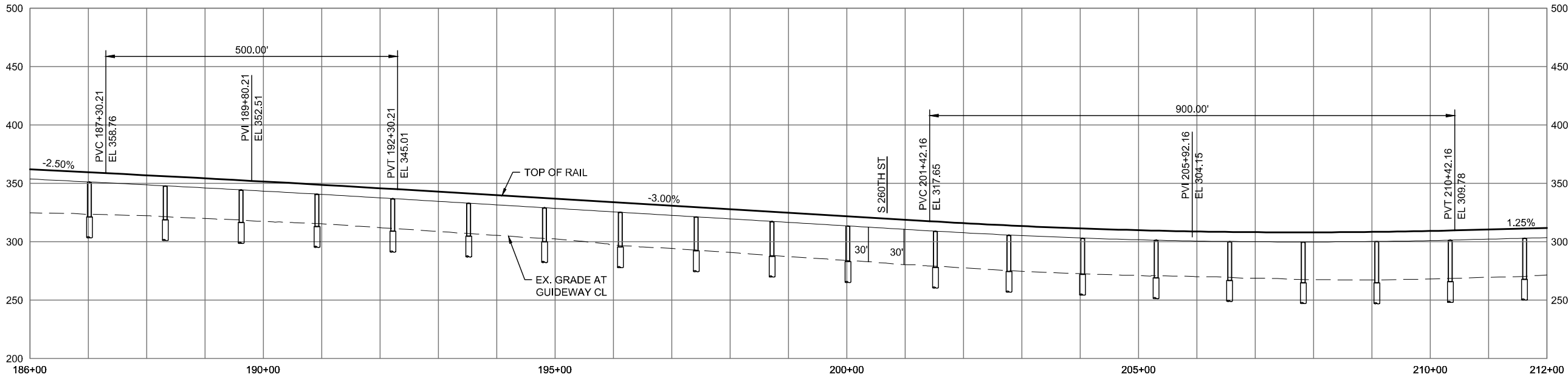
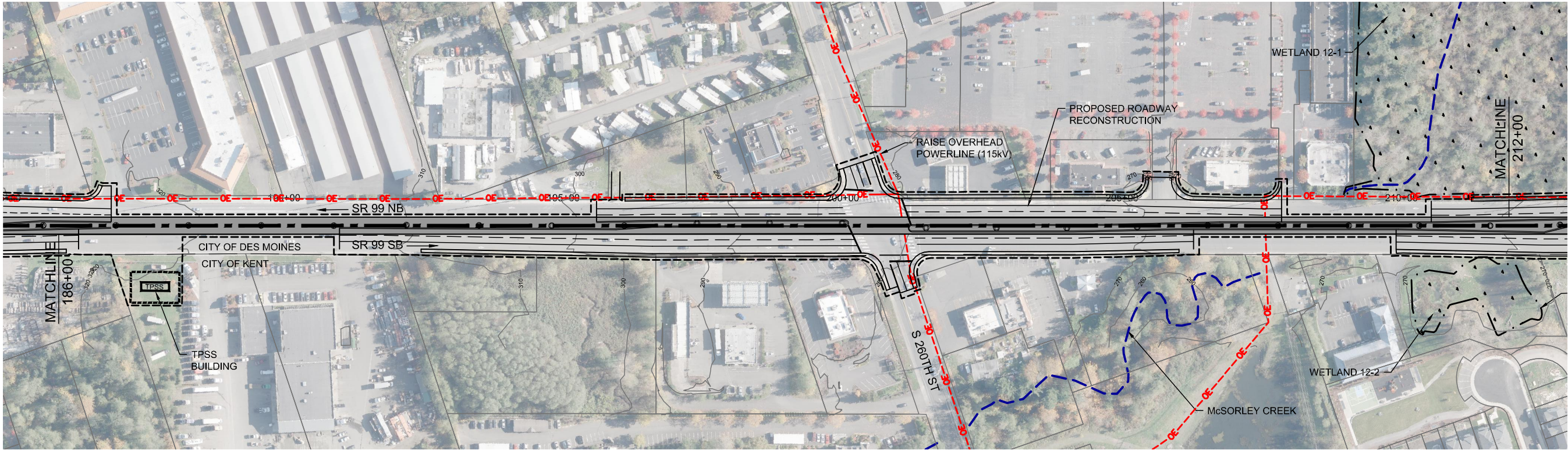


DRAFT EIS - CONCEPTUAL DESIGN
TRACK PLAN & PROFILE AND ROADWAY RECONSTRUCTION
SR 99 ALTERNATIVE
STA 160+00 TO STA 186+00

APRIL 2015

SR99-A7-PP07
10

SOUND TRANSIT FEDERAL WAY LINK EXTENSION



2/25/2015 2:22:33 PM C:\P\WORKING\SEAD\114119A_P\FILE SR99 MAINLINE.DWG CFOX

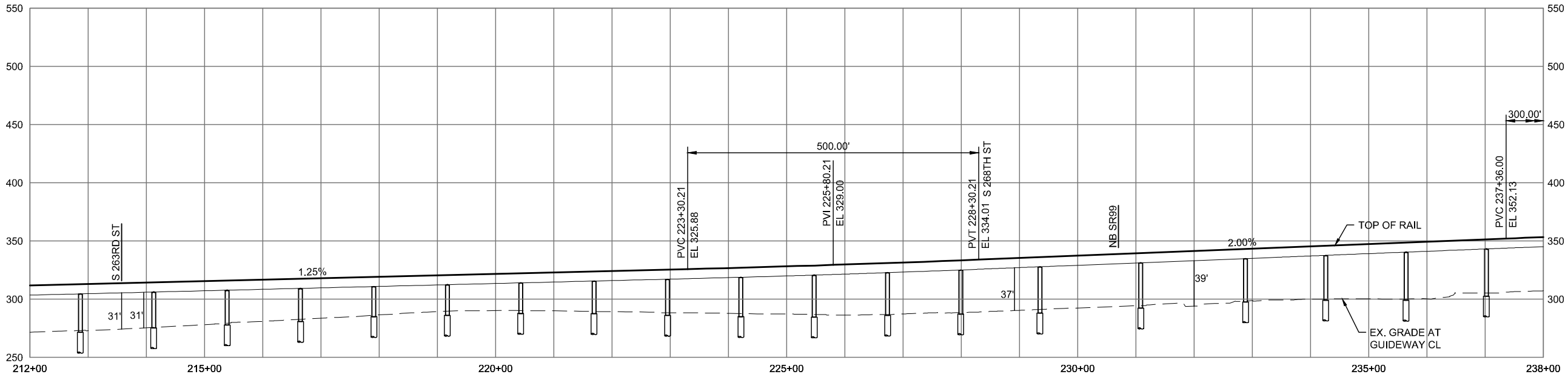
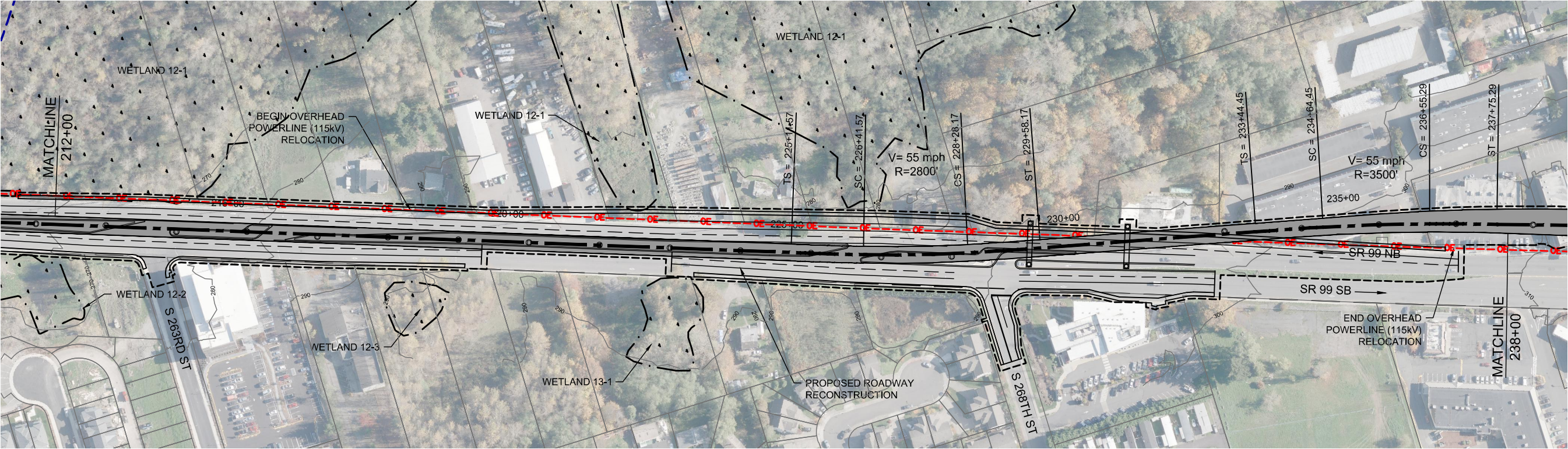


DRAFT EIS - CONCEPTUAL DESIGN
TRACK PLAN & PROFILE AND ROADWAY RECONSTRUCTION
SR 99 ALTERNATIVE
STA 186+00 TO STA 212+00

APRIL 2015

SR99-A8-PP08
11

SOUND TRANSIT FEDERAL WAY LINK EXTENSION



DRAFT EIS - CONCEPTUAL DESIGN
TRACK PLAN & PROFILE AND ROADWAY RECONSTRUCTION
SR 99 ALTERNATIVE
STA 212+00 TO STA 238+00



APRIL 2015

SR99-A9-PP09
12