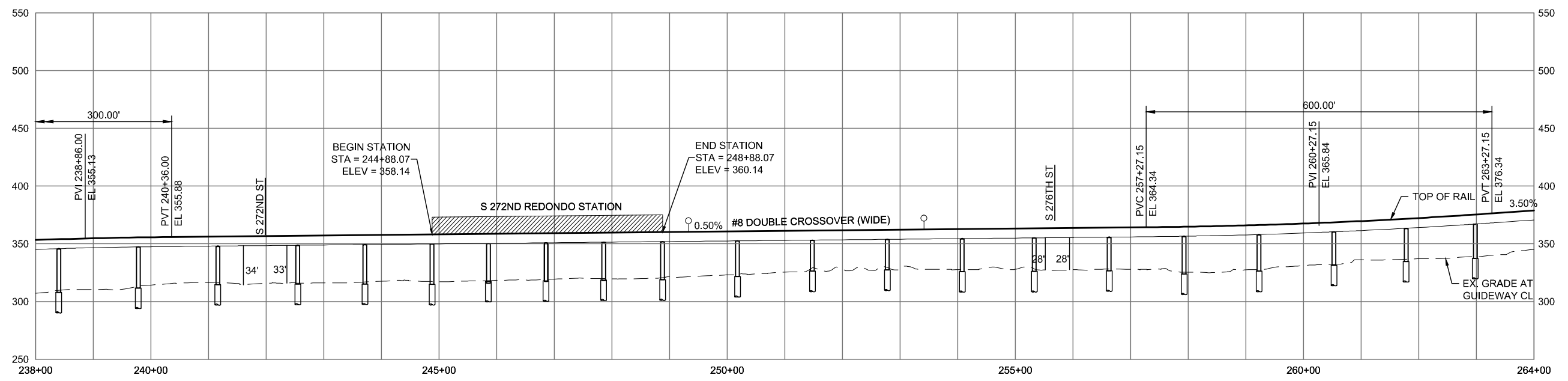
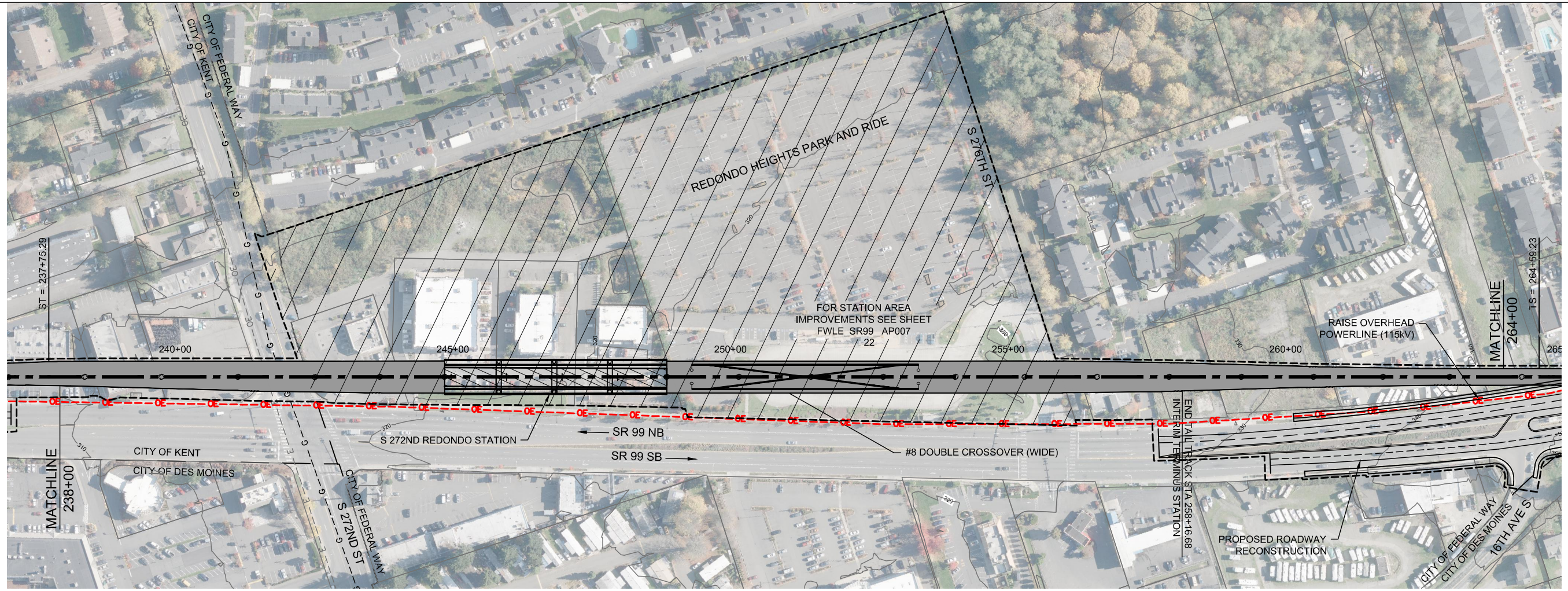


SOUND TRANSIT FEDERAL WAY LINK EXTENSION



2/26/2015 2:23:21 PM C:\WORKING\SEAD\114119A_FWLE_SR99_MAINLINE.DWG CPOK

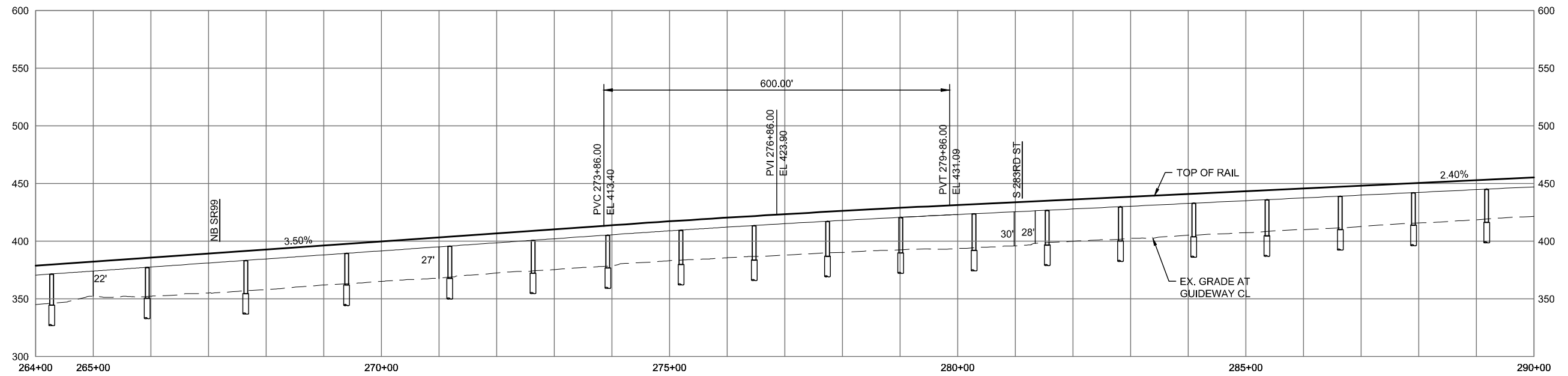
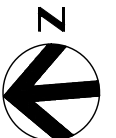
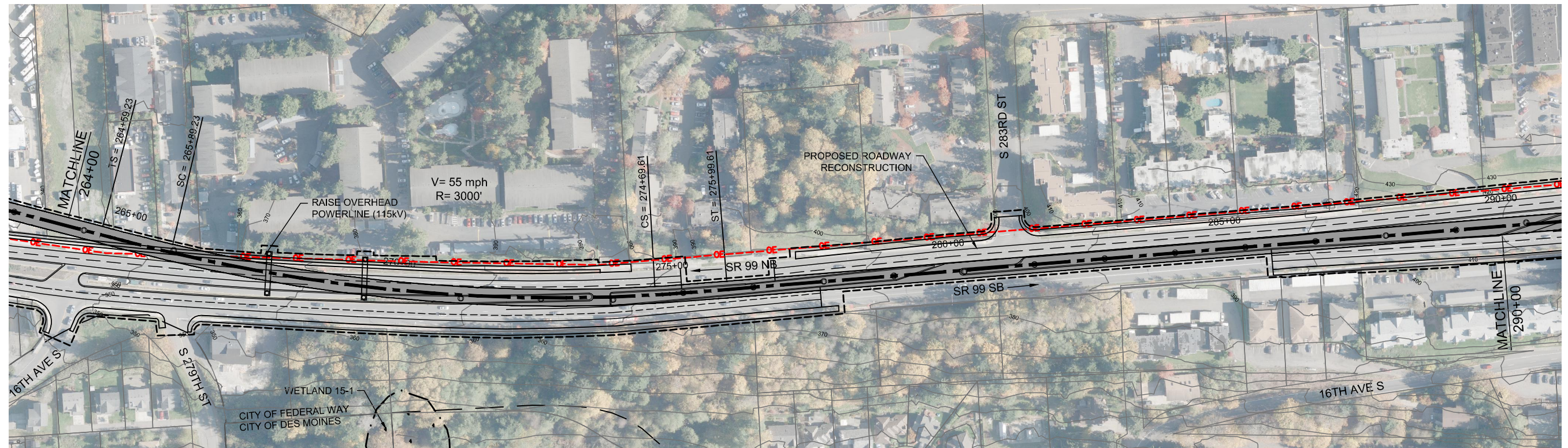


DRAFT EIS - CONCEPTUAL DESIGN
 TRACK PLAN & PROFILE AND ROADWAY RECONSTRUCTION
 SR 99 ALTERNATIVE
 STA 238+00 TO STA 264+00

APRIL 2015

SR99-A10-PP10
 13

SOUND TRANSIT FEDERAL WAY LINK EXTENSION



2/26/2015 2:23:44 PM C:\P\WORKING\SEAD\114119A_P\FILE_S\99 MAINLINE.DWG CFOX

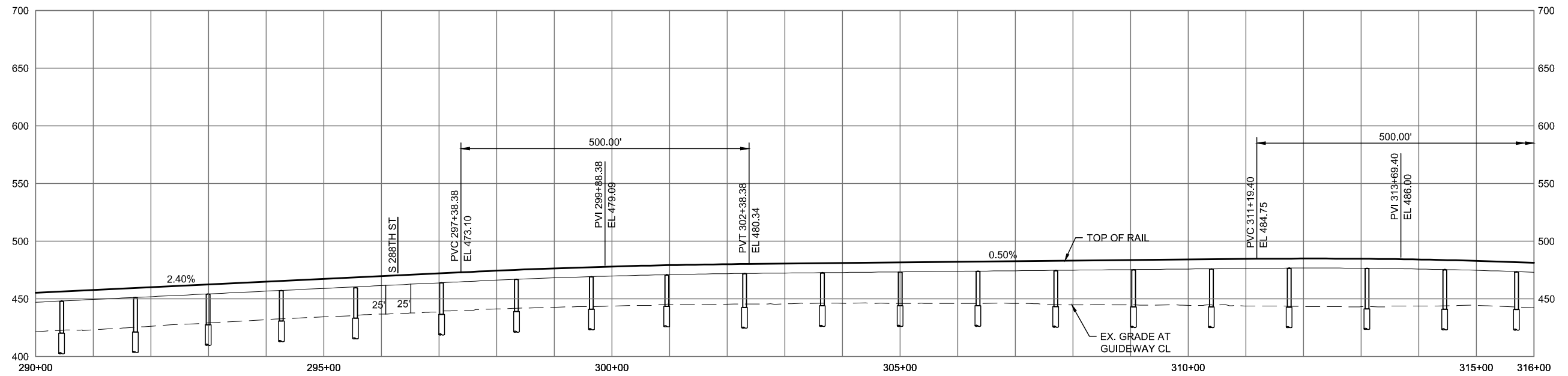
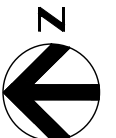
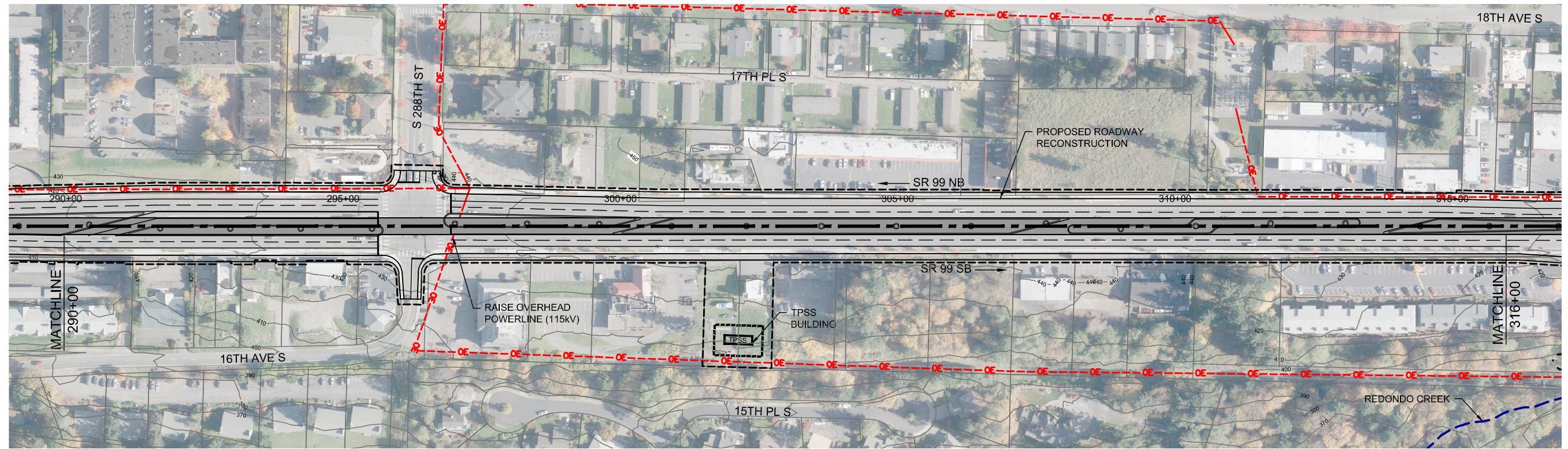


DRAFT EIS - CONCEPTUAL DESIGN
 TRACK PLAN & PROFILE AND ROADWAY RECONSTRUCTION
 SR 99 ALTERNATIVE
 STA 264+00 TO STA 290+00

APRIL 2015

SR99-A11-PP11
 14

SOUND TRANSIT FEDERAL WAY LINK EXTENSION



2/26/2015 2:24:08 PM C:\P\WORKING\SEAD\114119A_P\FILE_S\99 MAINLINE.DWG CFOX

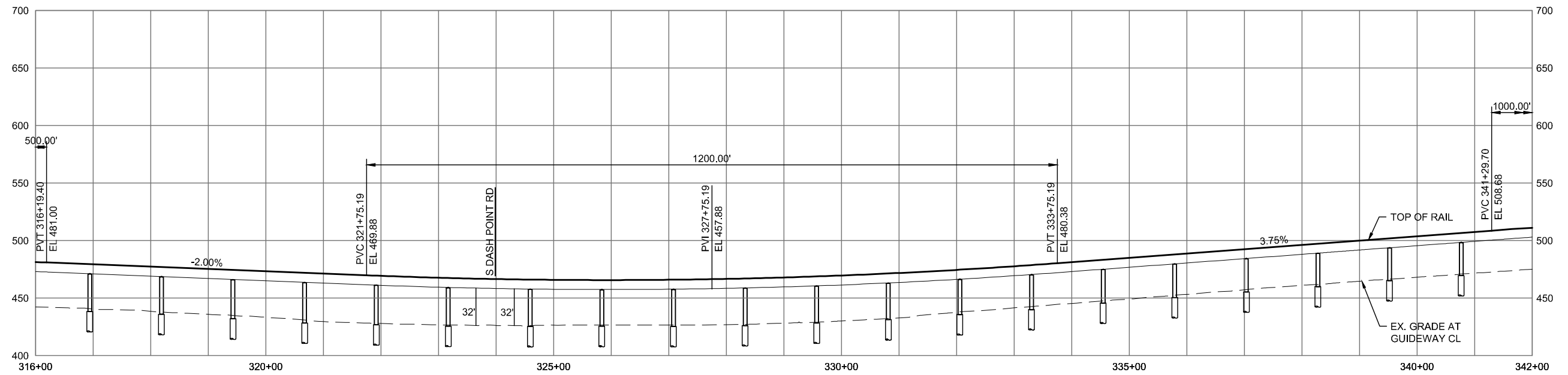
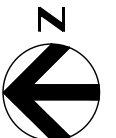
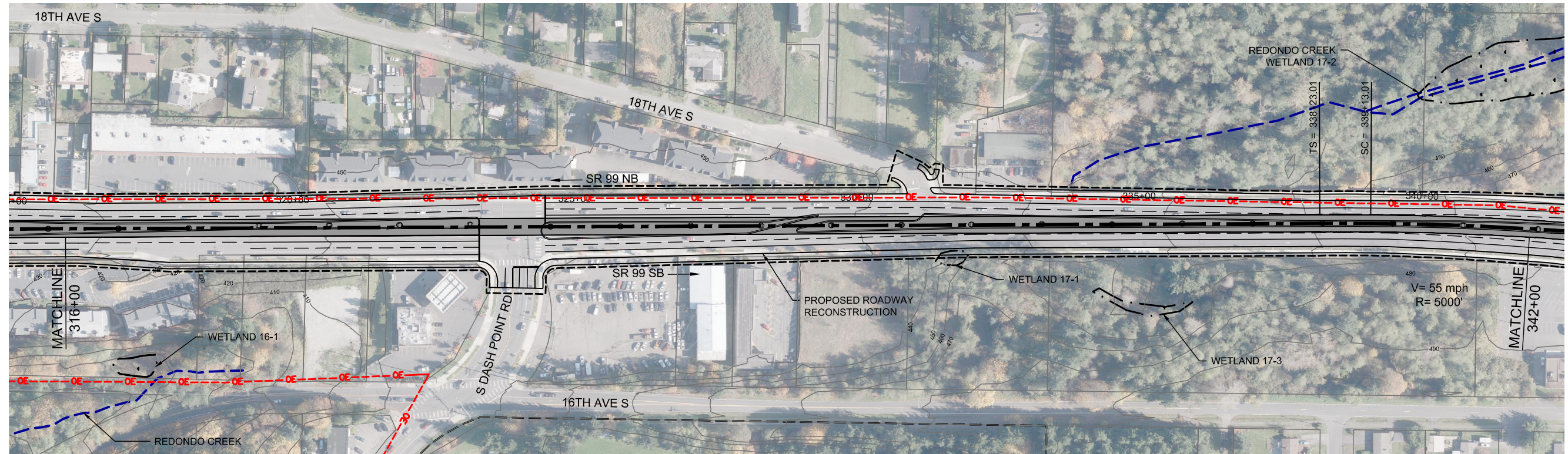


DRAFT EIS - CONCEPTUAL DESIGN
 TRACK PLAN & PROFILE AND ROADWAY RECONSTRUCTION
 SR 99 ALTERNATIVE
 STA 290+00 TO STA 316+00

APRIL 2015

SR99-A12-PP12
 15

SOUND TRANSIT FEDERAL WAY LINK EXTENSION



2/26/2015 2:24:28 PM C:\P\WORKING\SEAD\114119A_P\FILE_S\99 MAINLINE.DWG

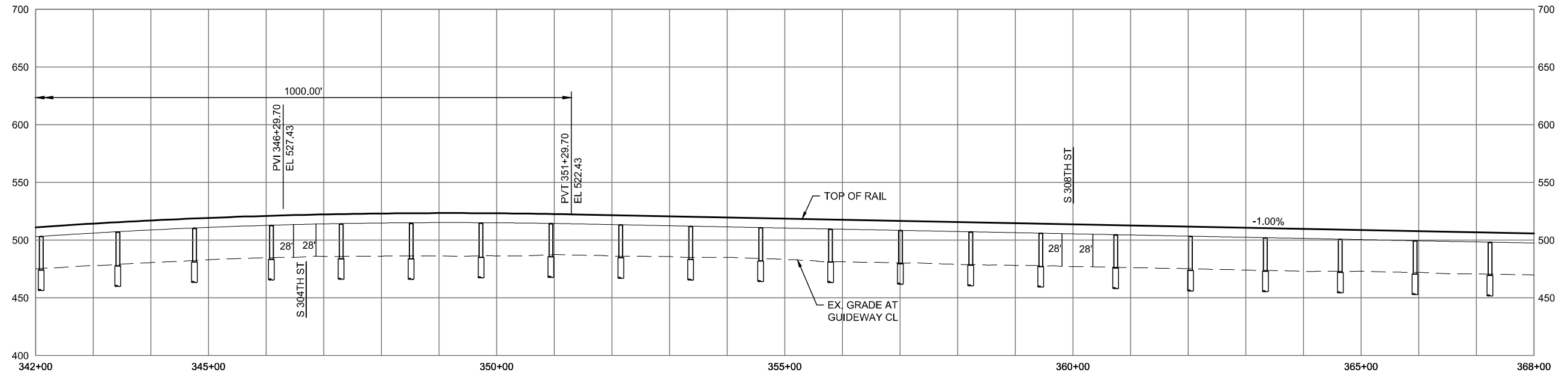
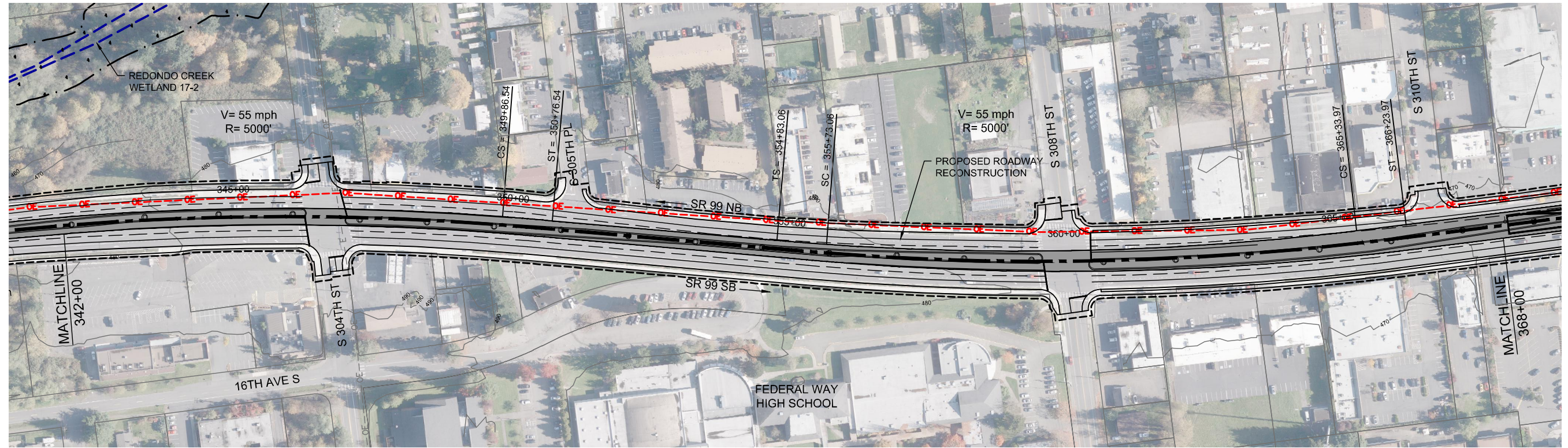


DRAFT EIS - CONCEPTUAL DESIGN
 TRACK PLAN & PROFILE AND ROADWAY RECONSTRUCTION
 SR 99 ALTERNATIVE
 STA 316+00 TO STA 342+00

APRIL 2015

SR99-A13-PP13
16

SOUND TRANSIT FEDERAL WAY LINK EXTENSION



2/26/2015 2:24:50 PM C:\P\WORKING\SEAD\114119A_P\FILE SR99_MAINLINE.DWG CFOX

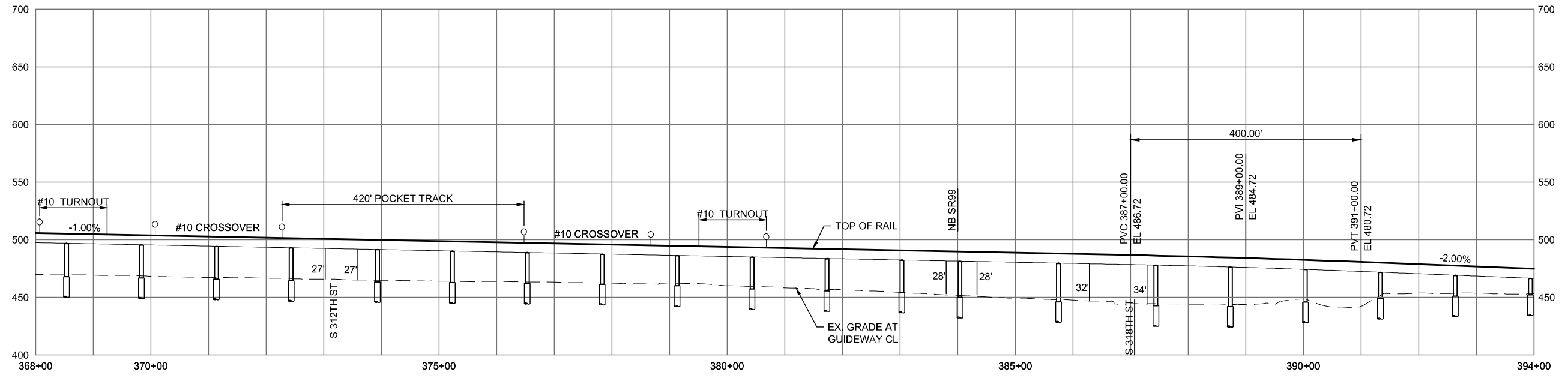
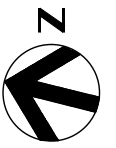
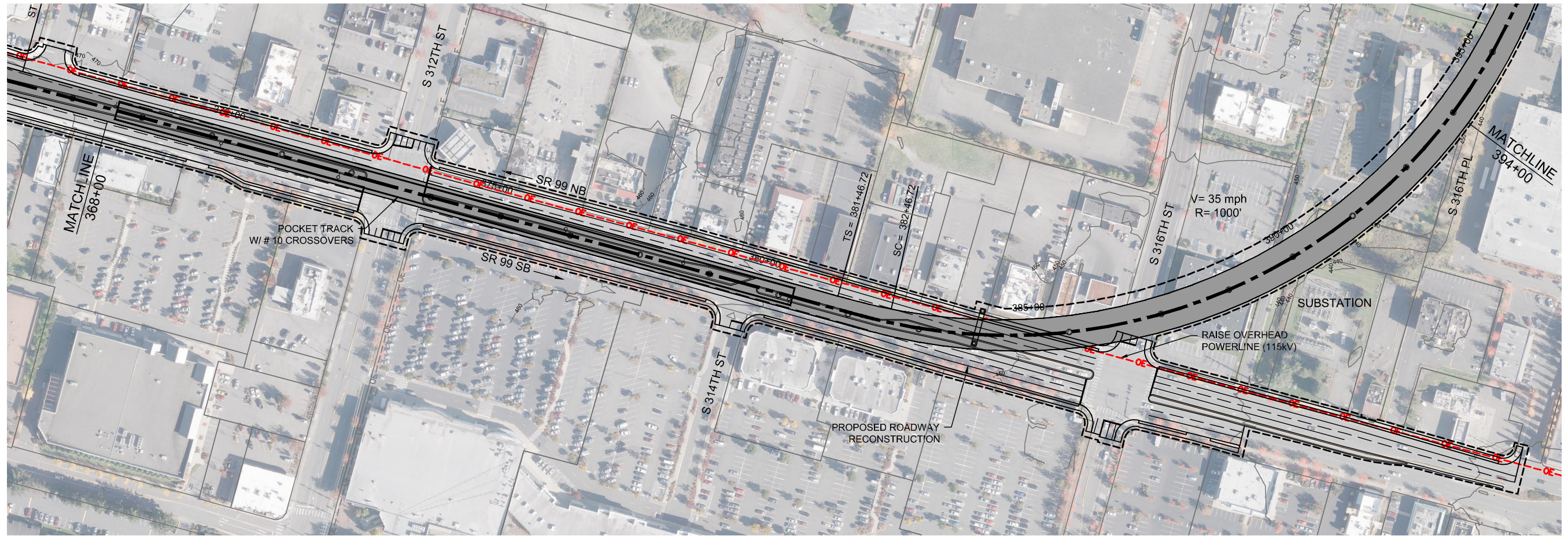


DRAFT EIS - CONCEPTUAL DESIGN
 TRACK PLAN & PROFILE AND ROADWAY RECONSTRUCTION
 SR 99 ALTERNATIVE
 STA 342+00 TO STA 368+00

APRIL 2015

SR99-A14-PP14
 17

SOUND TRANSIT FEDERAL WAY LINK EXTENSION



2/26/2015 2:25:14 PM C:\P\WORKING\SEAD\114119A_P\FILE SR99_MAINLINE.DWG CFOX

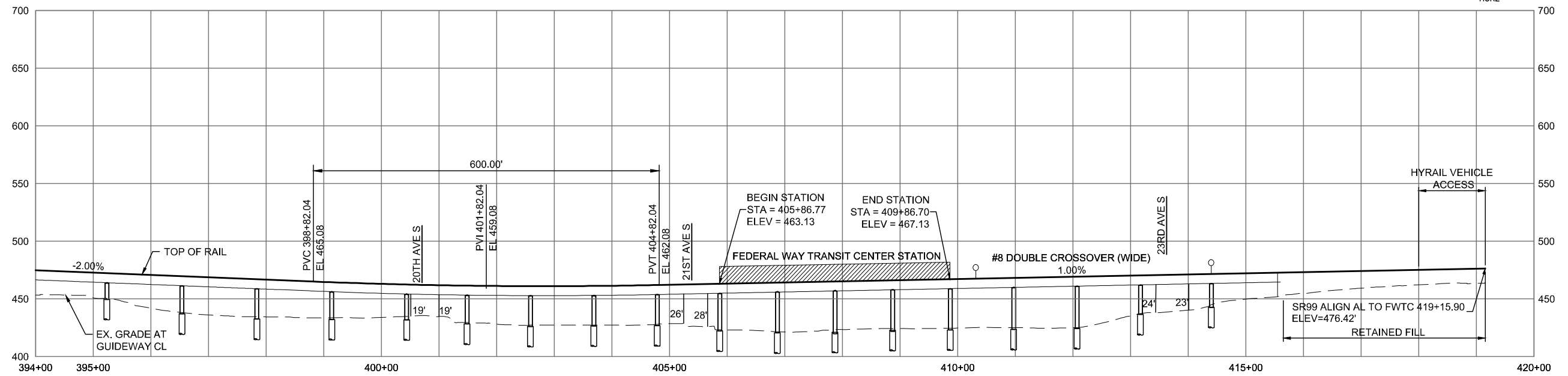
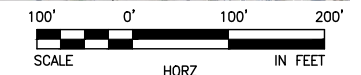
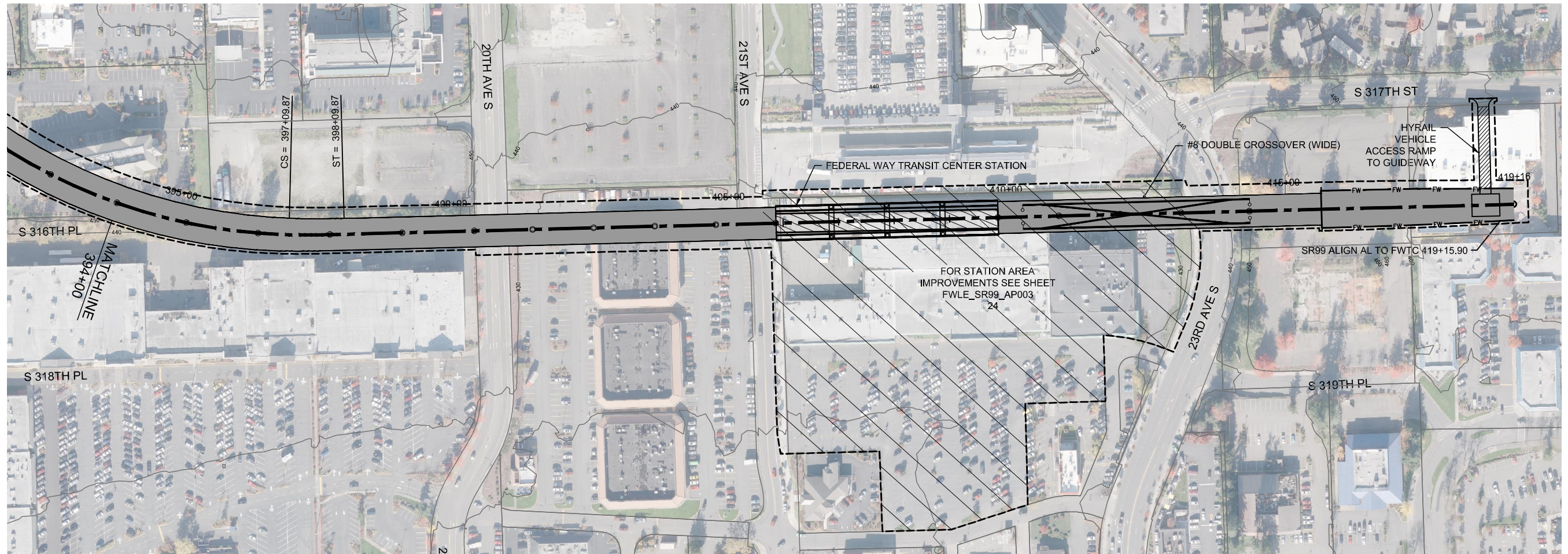


DRAFT EIS - CONCEPTUAL DESIGN
TRACK PLAN & PROFILE AND ROADWAY RECONSTRUCTION
SR 99 ALTERNATIVE
STA 368+00 TO STA 394+00

APRIL 2015

SR99-A15-PP15
18

SOUND TRANSIT FEDERAL WAY LINK EXTENSION



2/26/2015 2:25:36 PM C:\P\WORKING\SEAD\114119A_FWL_SR99_MAINLINE.DWG

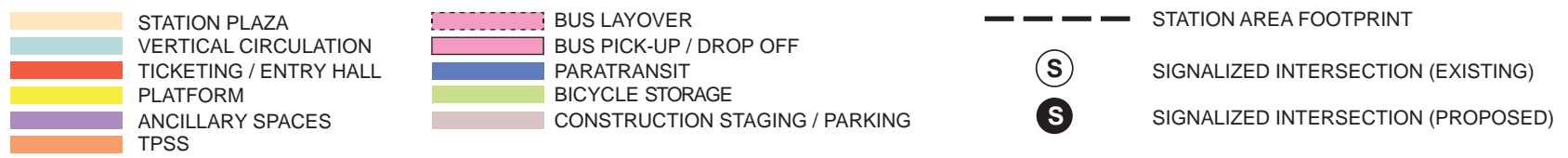


DRAFT EIS - CONCEPTUAL DESIGN
 TRACK PLAN & PROFILE AND ROADWAY RECONSTRUCTION
 SR 99 ALTERNATIVE
 STA 394+00 TO STA 419+15.90

APRIL 2015

SR99-A16-PP16
 19

SOUND TRANSIT FEDERAL WAY LINK EXTENSION



ASSUMPTIONS:

Kent/Des Moines SR 99 West Station	
Alternative(s):	SR 99
Boardings	3,000
Boardings (with 216th Station)	2,500
Boardings (interim terminus)	4,500
Station Configuration	
Terminus / In-Line	Interim Terminus
Station Type	Center Platform - Elevated
Platform Width	34'
Tail track	900'
Crossover	Yes
TPSS	Yes
Program	
KC Metro Ancillary Spaces (SF)	200
ST Ancillary Spaces (SF)	1,800
Total Ancillary Spaces (SF)	2,000
Vertical Circulation	
# of entrances	2
# of escalators	2
# of staircases (patron)	2
# of elevators	2
# of emergency stairs	2
Bus/Paratransit Facilities	
Bus pick-up/drop-off (KCM)	2 bays, one 60' coach each
Bus pick-up/drop-off (ST)	1 bay, two 60' coaches
Rapid Ride	On-street at SR 99
Bus layover (KCM)	2 bays, two 60' coaches each
Bus layover (ST)	1 bay, two 60' coaches
Paratransit	1 permanent, 1 interim
Communications Facility	Tier 2
Parking & Amenities	
Bike storage	900 SF
Patron drop-off	6 spaces
Short-term parking	7 to 10 spaces
Staff parking	4 spaces
Service/emerg. vehicle park.	2 spaces, separate lot
Signal bungalow / TPSS park.	2 spaces, dedicated
Long-term patron parking	500 spaces (structure)
Temporary patron parking*	500 spaces (surface)
Total proposed patron parking*	1000 Spaces

*Only required for interim terminus condition



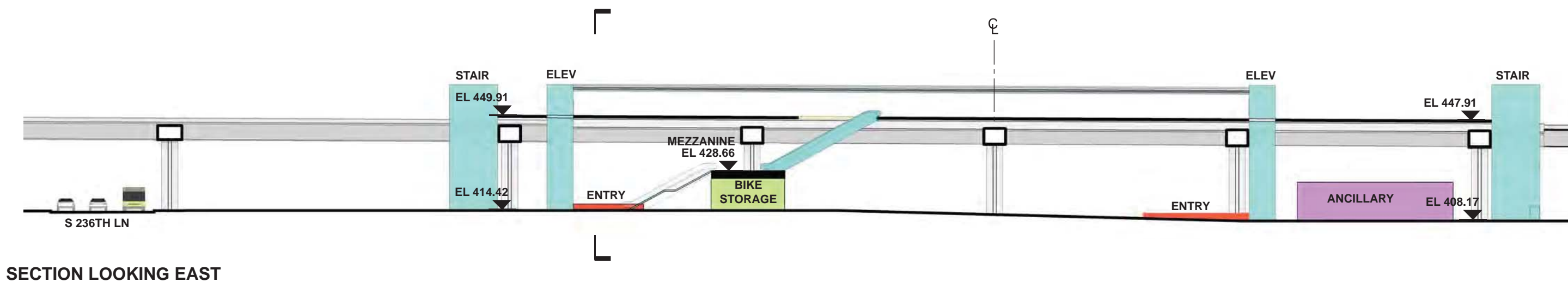
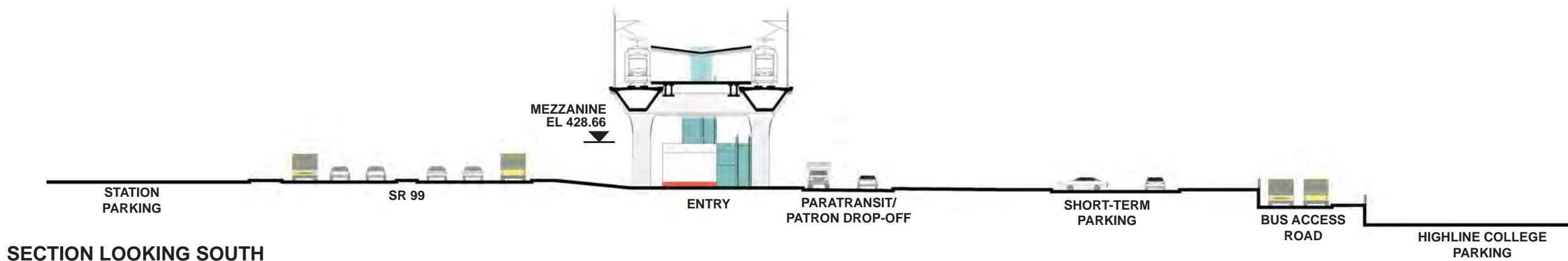
JHAMMERQUIST
 7/17/2014 11:36:52 AM
 G:\BIM\PROJECTS\67812\FEDERAL WAY TRANSIT EXTENSION\2 CLIENT\2 DATA\INCOMING-HDR\40717\UPDATED TITLEBLOCKS\TTLBLK.DWG








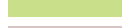





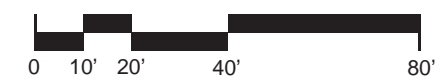
DRAFT EIS - CONCEPTUAL DESIGN
 KENT/DES MOINES SR 99 WEST STATION
 SITE PLAN

APRIL 2015
 FWLE_S99_AP009
 20

SOUND TRANSIT FEDERAL WAY LINK EXTENSION



- | | |
|--|--|
|  STATION PLAZA |  BUS LAYOVER |
|  VERTICAL CIRCULATION |  BUS PICK-UP / DROP OFF |
|  TICKETING / ENTRY HALL |  PARATRANSIT |
|  PLATFORM |  BICYCLE STORAGE |
|  ANCILLARY SPACES |  CONSTRUCTION STAGING / PARKING |
|  TPSS | |



7/17/2014 11:28:52 AM JHAMMERQUIST G:\BIM\PROJECTS\67512\FEDERAL WAY TRANSIT EXTENSION\2 CLIENT\2 DATA\INCOMING-HDRV\40717\UPDATED\TITLEBLOCK\DESIGN_TTLBLK.DWG



DRAFT EIS - CONCEPTUAL DESIGN
 KENT/DES MOINES SR 99 WEST STATION
 SECTIONS

APRIL 2015
 FWLE_S99_AX009
 21

SOUND TRANSIT FEDERAL WAY LINK EXTENSION



ASSUMPTIONS:

S 272nd Redondo Station	
Alternative(s)	SR 99
Boardings	1,500
Boardings (interim terminus)	3,500
Station Configuration	
Terminus / In-Line	Interim Terminus
Station Type	Center Platform - Elevated
Platform Width	34'
Tail track	900'
Crossover	Yes
TPSS	Yes
Program	
KC Metro Ancillary Spaces (SF)	200
ST Ancillary Spaces (SF)	1,800
Total Ancillary Spaces (SF)	2,000
Vertical Circulation	
# of entrances	2
# of escalators	4
# of staircases (patron)	4
# of elevators	2
# of emergency stairs	2
Bus/ Paratransit Facilities	
Bus bays (KCM)	2 bays, one 60' coach each
Bus bays (ST)	N/A
Rapid Ride	On-street at SR 99
Bus layover (KCM)	2 bays, one 60' coach each
Bus layover (ST)	N/A
Paratransit	1 permanent, 1 interim
Communications Facility	Tier 2
Parking & Amenities	
Bike storage	900 SF
Patron drop-off	6 spaces
Short-term patron parking	7 to 10 spaces
Staff parking	4 spaces
Service/emerg. vehicle park.	2 spaces, separate lot
Signal bungalow / TPSS park.	2 spaces, dedicated
Existing patron parking	700 spaces
Additional patron parking	700 spaces
Total proposed patron parking	1400 spaces (structure)

- STATION PLAZA
- VERTICAL CIRCULATION
- TICKETING / ENTRY HALL
- PLATFORM
- ANCILLARY SPACES
- TPSS
- BUS LAYOVER
- BUS PICK-UP / DROP OFF
- PARATRANSIT
- BICYCLE STORAGE
- CONSTRUCTION STAGING / PARKING
- STATION AREA FOOTPRINT
- S SIGNALIZED INTERSECTION (EXISTING)
- S SIGNALIZED INTERSECTION (PROPOSED)



7/17/2014 11:36:52 AM JHAMMERQUIST G:\BIM\PROJECTS\67812\FEDERAL WAY TRANSIT EXTENSION\2 CLIENT\2 DATA\INCOMING-HRV\40717\UPDATED TITLEBLOCKS\TITLEBLOCK.DWG

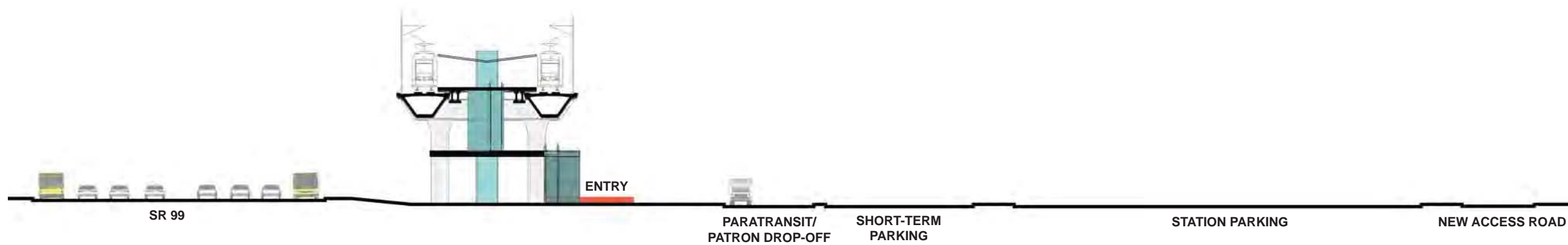


DRAFT EIS - CONCEPTUAL DESIGN
S 272ND REDONDO STATION
SITE PLAN

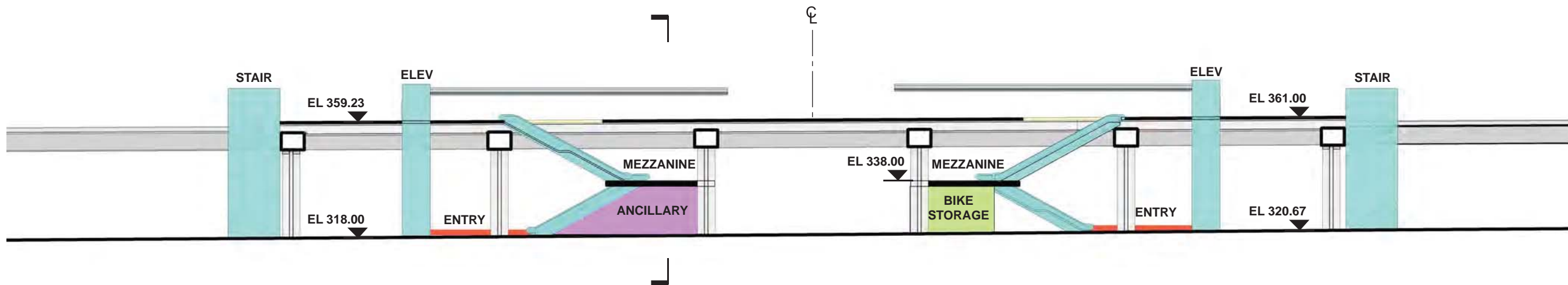
APRIL 2015

FWLE_S99_AP007
22

SOUND TRANSIT FEDERAL WAY LINK EXTENSION

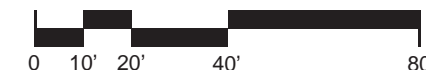


SECTION LOOKING NORTH



SECTION LOOKING EAST

- | | |
|------------------------|--------------------------------|
| STATION PLAZA | BUS LAYOVER |
| VERTICAL CIRCULATION | BUS PICK-UP / DROP OFF |
| TICKETING / ENTRY HALL | PARATRANSIT |
| PLATFORM | BICYCLE STORAGE |
| ANCILLARY SPACES | CONSTRUCTION STAGING / PARKING |
| TPSS | |



7/17/2014 11:36:52 AM JHAMMERQUIST G:\BIM\PROJECTS\FWLE\FEDERAL WAY TRANSIT EXTENSION\2 CLIENT\2 DATA\INCOMING-HDR\40717\UPDATED\TITLEBLOCK\DES_TTLBLK.DWG

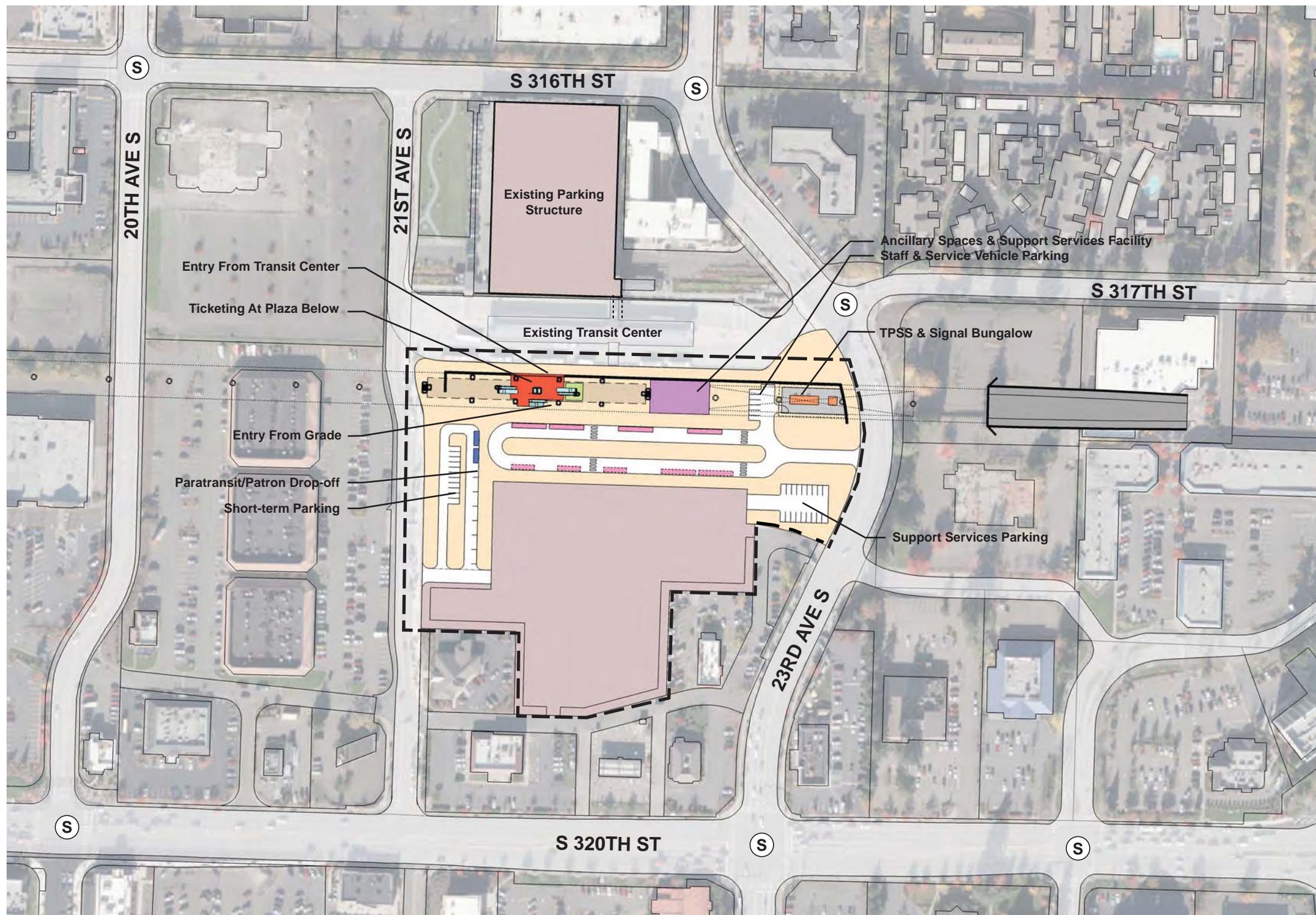


DRAFT EIS - CONCEPTUAL DESIGN
S 272ND REDONDO STATION
SECTIONS

APRIL 2015

FWLE_S99_AX007
23

SOUND TRANSIT FEDERAL WAY LINK EXTENSION



ASSUMPTIONS:

Federal Way Transit Center Station	
Alternative(s)	SR 99; I-5 to SR 99
Boardings	9,000
Station Configuration	
Terminus / In-Line	Terminus
Station Type	Center Platform - Elevated
Platform Width	34'
Tail track	900'
Crossover	Yes
TPSS	Yes
Program	
KC Metro Ancillary Spaces (SF)	200
ST Ancillary Spaces (SF)	1,800
Support Services (SF)	5,000
Total Ancillary Spaces (SF)	7,000
Vertical Circulation	
# of entrances	2
# of escalators	3
# of staircases (patron)	3
# of elevators	2
# of emergency stairs	2
Bus/ Paratransit Facilities	
Bus bays (KCM)	2 bays, one 60' coach each
Bus bays (ST)	1 bay, two 60' coaches
Rapid Ride	Transit Island (Existing)
Bus layover (KCM)	3 bays, one 40' coach each 5 bays, one 60' coach each (relocated from transit ctr.)
Bus layover (ST)	1 bay, two 60' coaches
Paratransit spaces	2 spaces
Communications Facility	Tier 3
Parking & Amenities	
Bike storage	900 SF
Patron drop-off	6 spaces
Short-term patron parking	7 to 10 spaces
Staff parking	4 spaces
Support Services parking	15 spaces
Service/emerg. vehicle park.	2 spaces, separate lot
Signal bungalow / TPSS park.	2 spaces, dedicated
Existing patron parking	1,190 spaces
Additional patron parking	400 spaces
Total proposed patron parking	1590 spaces (structure)

- STATION PLAZA
- VERTICAL CIRCULATION
- TICKETING / ENTRY HALL
- PLATFORM
- ANCILLARY SPACES
- TPSS
- BUS LAYOVER
- BUS PICK-UP / DROP OFF
- PARATRANSIT
- BICYCLE STORAGE
- CONSTRUCTION STAGING / PARKING
- STATION AREA FOOTPRINT
- S SIGNALIZED INTERSECTION (EXISTING)
- S SIGNALIZED INTERSECTION (PROPOSED)



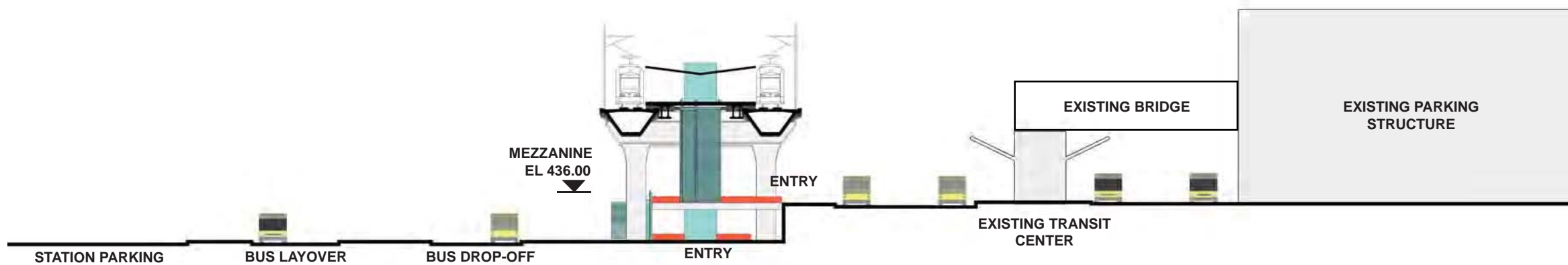
7/17/2014 11:36:52 AM JHAMMERQUIST G:\BIM\PROJECTS\67812\FEDERAL WAY TRANSIT CENTER\EXTENSION\2 CLIENT\2 DATA\INCOMING-HRV\40717\UPDATED TITLEBLOCK.DWG



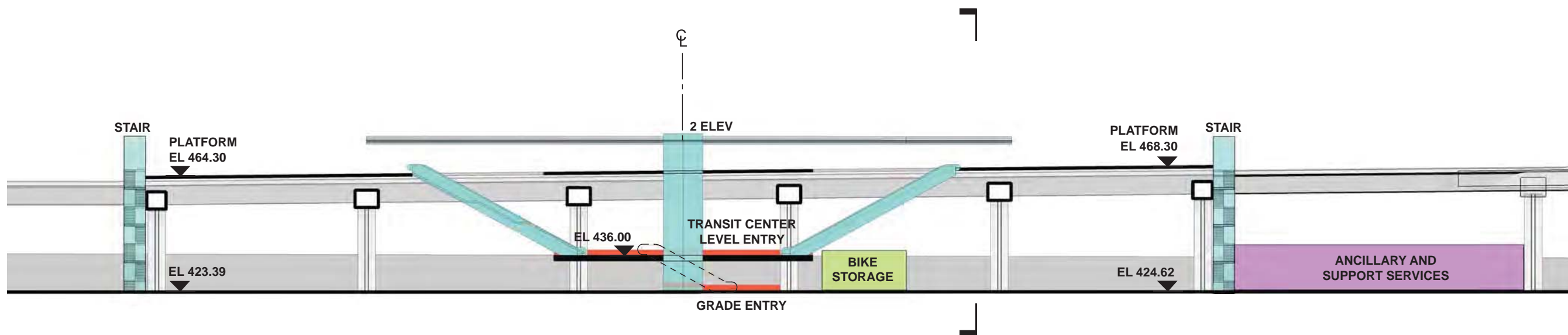
DRAFT EIS - CONCEPTUAL DESIGN
FEDERAL WAY TRANSIT CENTER STATION
SITE PLAN

APRIL 2015
FWLE_S99_AP003
24


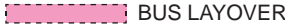

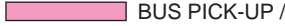







SOUND TRANSIT FEDERAL WAY LINK EXTENSION

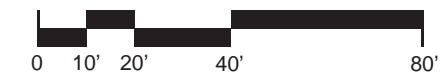


SECTION LOOKING WEST



SECTION LOOKING NORTH

- | | |
|--|--|
|  STATION PLAZA |  BUS LAYOVER |
|  VERTICAL CIRCULATION |  BUS PICK-UP / DROP OFF |
|  TICKETING / ENTRY HALL |  PARATRANSIT |
|  PLATFORM |  BICYCLE STORAGE |
|  ANCILLARY SPACES |  CONSTRUCTION STAGING / PARKING |
|  TPSS | |



7/17/2014 11:36:52 AM JHAMMERQUIST G:\BIM\PROJECTS\FWLE\FEDERAL WAY TRANSIT EXTENSION\2 CLIENT\2 DATA\INCOMING-HDRV\40717\UPDATED\TITLEBLOCK\DEIS_TTLBLK.DWG



DRAFT EIS - CONCEPTUAL DESIGN
 FEDERAL WAY TRANSIT CENTER STATION
 SECTIONS

APRIL 2015
 FWLE_S99_AX003
 25