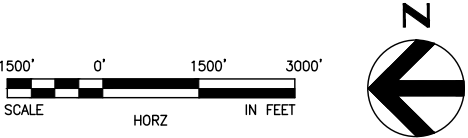


SOUND TRANSIT FEDERAL WAY LINK EXTENSION



SR99 SHEET LAYOUT MATRIX																
	1	2	3	4	5	6	7	8	9	10	11	12	13	14	15	16
A - SR 99 ALTERNATIVE	X	X	X	X	X	X	X	X	X	X	X	X	X	X	X	X
B - S 216TH WEST STATION OPTION (POTENTIAL ADDITIONAL STATION)	X	X	X													
C - S 216TH EAST STATION OPTION (POTENTIAL ADDITIONAL STATION)		X	X													
D - KENT/DES MOINES SR 99 MEDIAN STATION OPTION				X	X	X										
E - KENT/DES MOINES SR 99 EAST STATION OPTION				X	X	X	X									
F - KENT/DES MOINES HC CAMPUS STATION OPTION			X	X	X	X	X									
F - KDM HC CAMPUS OPTION FROM S 216TH WEST STATION OPTION						X	X	X	X	X						
G - S 260TH WEST STATION OPTION (POTENTIAL ADDITIONAL STATION)					X	X	X	X	X							
H - S 260TH EAST STATION OPTION (POTENTIAL ADDITIONAL STATION)							X	X	X	X						
J - S 272ND REDONDO TRENCH STATION OPTION								X	X	X	X	X	X	X		
K - FEDERAL WAY SR 99 STATION OPTION															X	X

I - NOT USED



2/25/2015 9:20:48 AM
C:\P\WORKING\SEAD\114117SR99-A00-GX02.DWG
CFOX

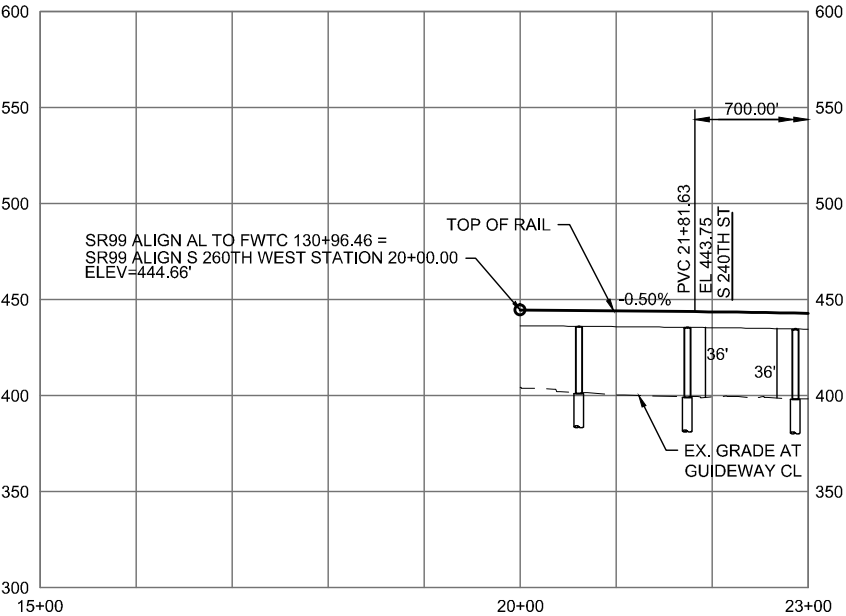
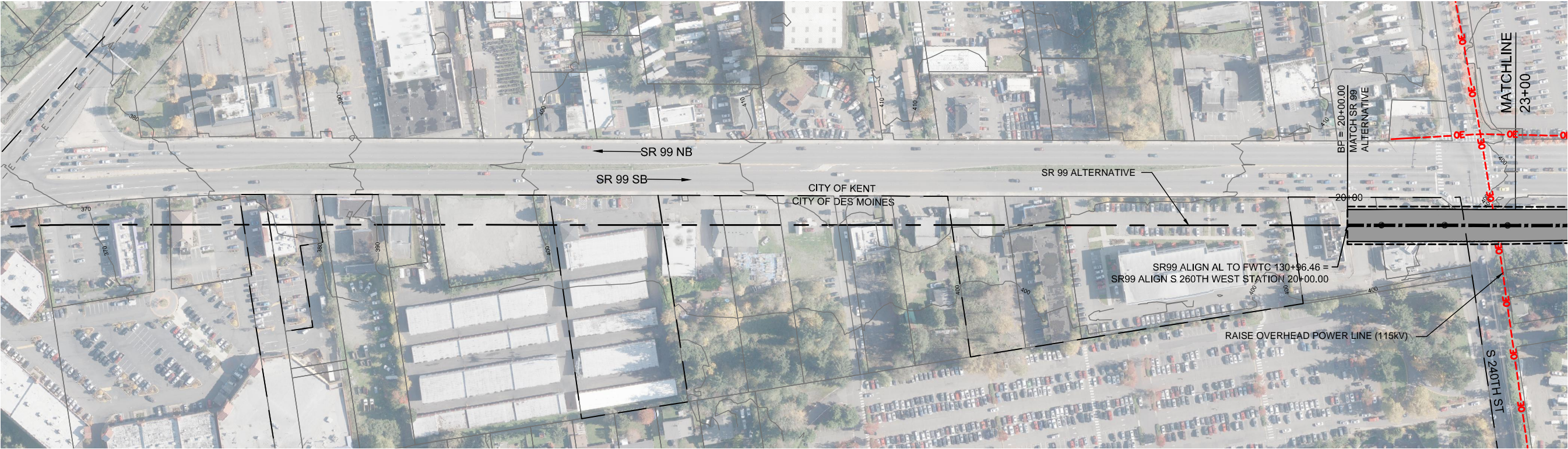


DRAFT EIS - CONCEPTUAL DESIGN
S 260TH WEST STATION OPTION (POTENTIAL ADDITIONAL STATION)
SHEET INDEX KEYMAP

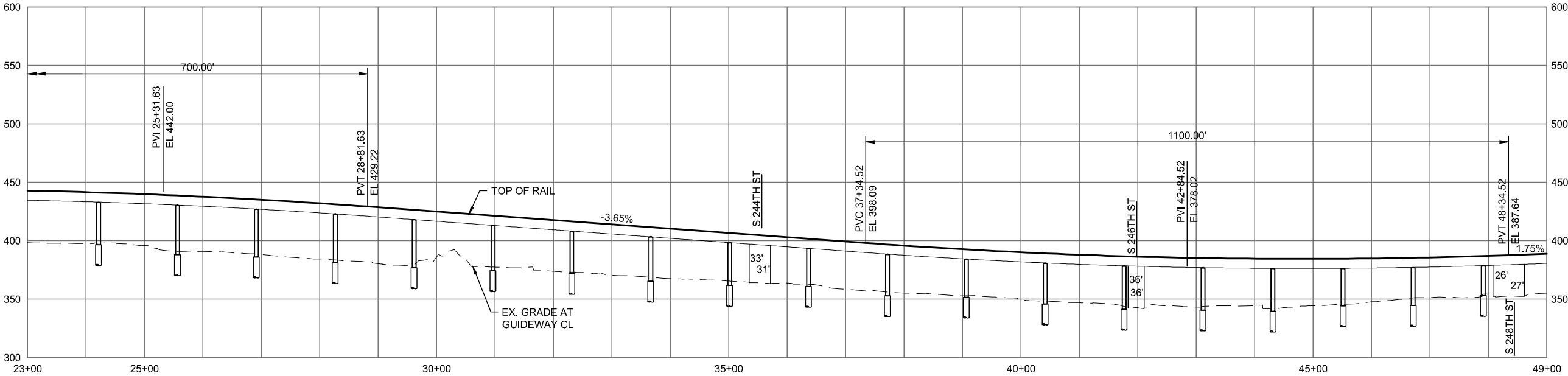
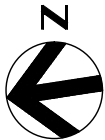
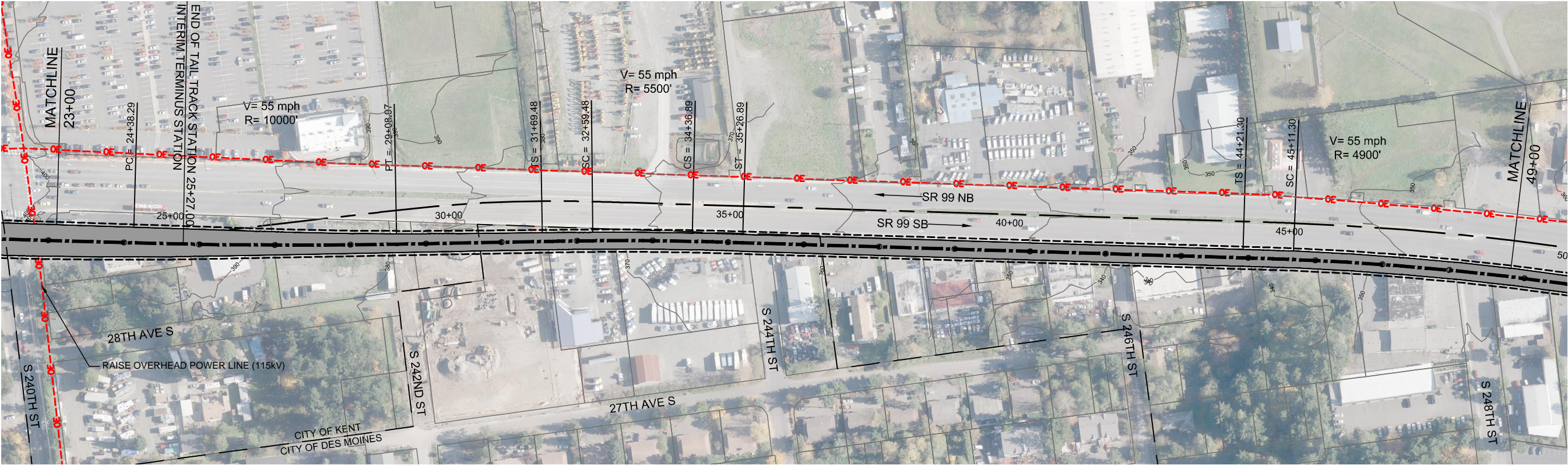
APRIL 2015

SR99-G00-GX02
64

SOUND TRANSIT FEDERAL WAY LINK EXTENSION



SOUND TRANSIT FEDERAL WAY LINK EXTENSION



2/25/2015 10:41:42 AM C:\WORKING\SEAD\1141196_S260TH WEST STATION.DWG CFOX

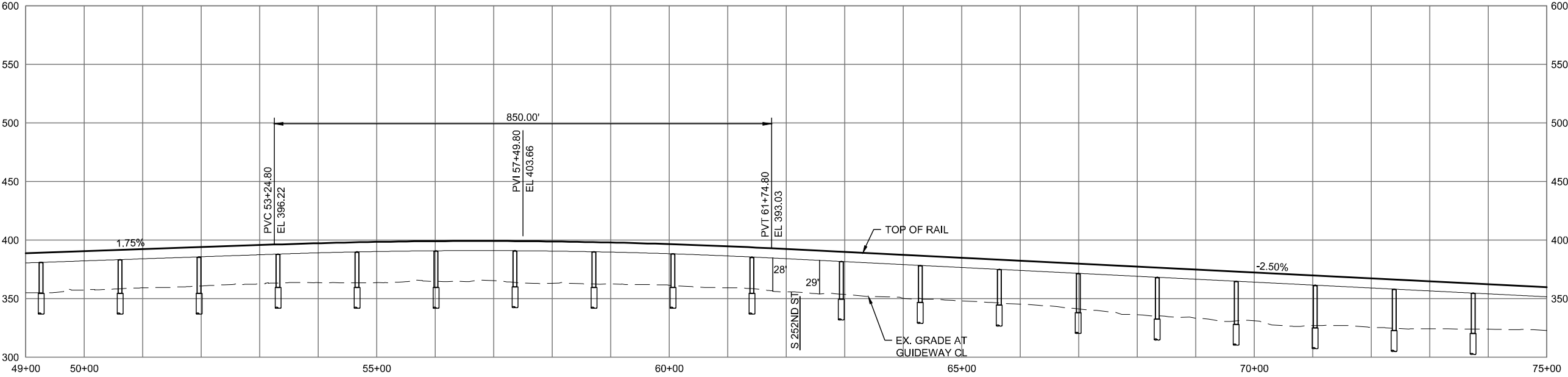
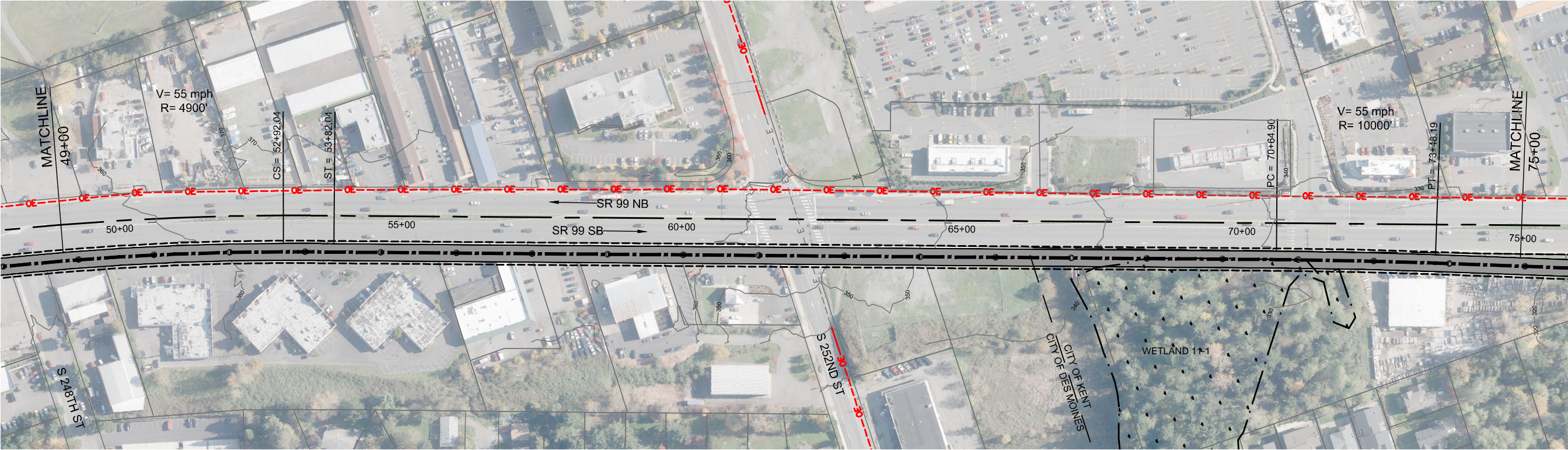


DRAFT EIS - CONCEPTUAL DESIGN
TRACK PLAN AND PROFILE & ROADWAY RECONSTRUCTION
S 260TH WEST STATION OPTION (POTENTIAL ADDITIONAL STATION)
STA 23+00 TO STA 49+00

APRIL 2015

SR99-G2-PP06
66

SOUND TRANSIT FEDERAL WAY LINK EXTENSION



2/25/2015 10:41:54 AM C:\WORKING\SEAD111119_S260TH WEST STATION.DWG CFOX

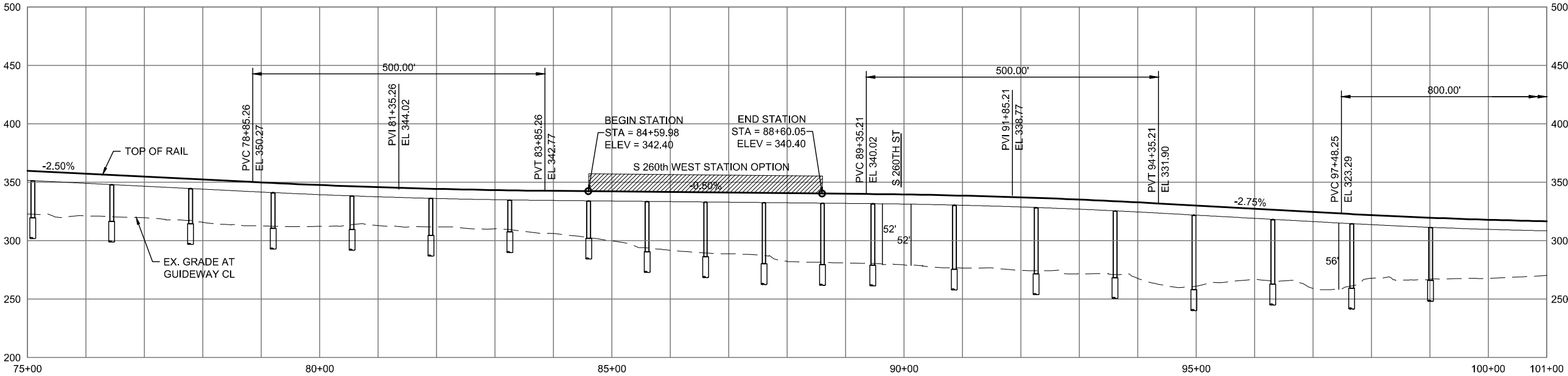
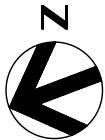
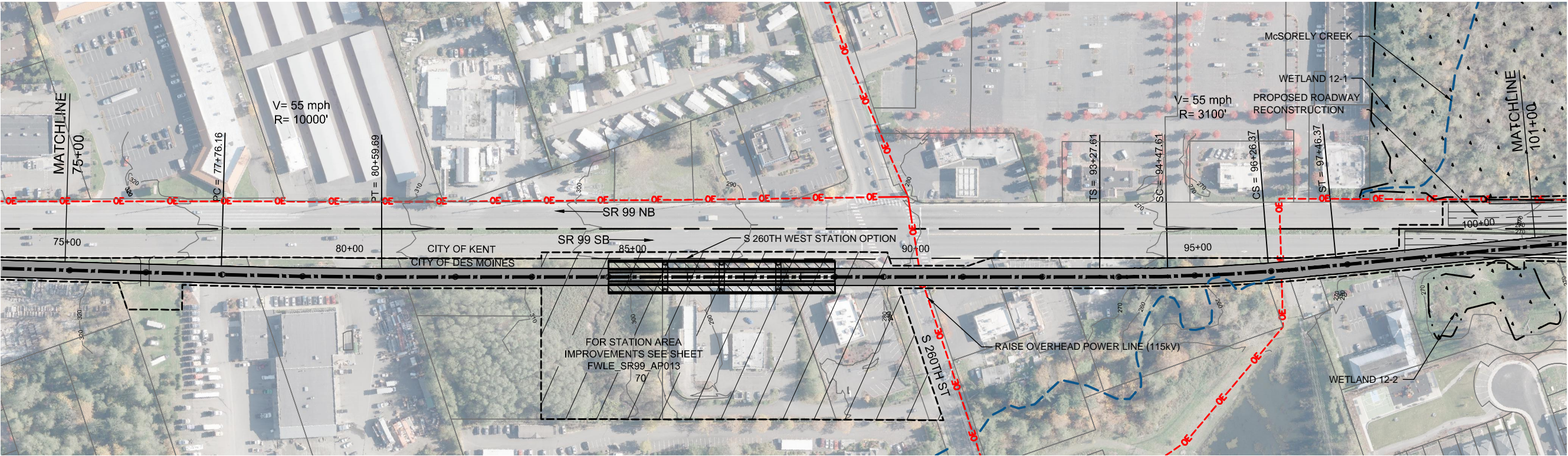


DRAFT EIS - CONCEPTUAL DESIGN
TRACK PLAN AND PROFILE & ROADWAY RECONSTRUCTION
S 260TH WEST STATION OPTION (POTENTIAL ADDITIONAL STATION)
STA 49+00 TO STA 75+00

APRIL 2015

SR99-G3-PP07
67

SOUND TRANSIT FEDERAL WAY LINK EXTENSION



2/25/2015 10:42:08 AM C:\WORKING\SEAD111119_S260TH WEST STATION.DWG CFOX

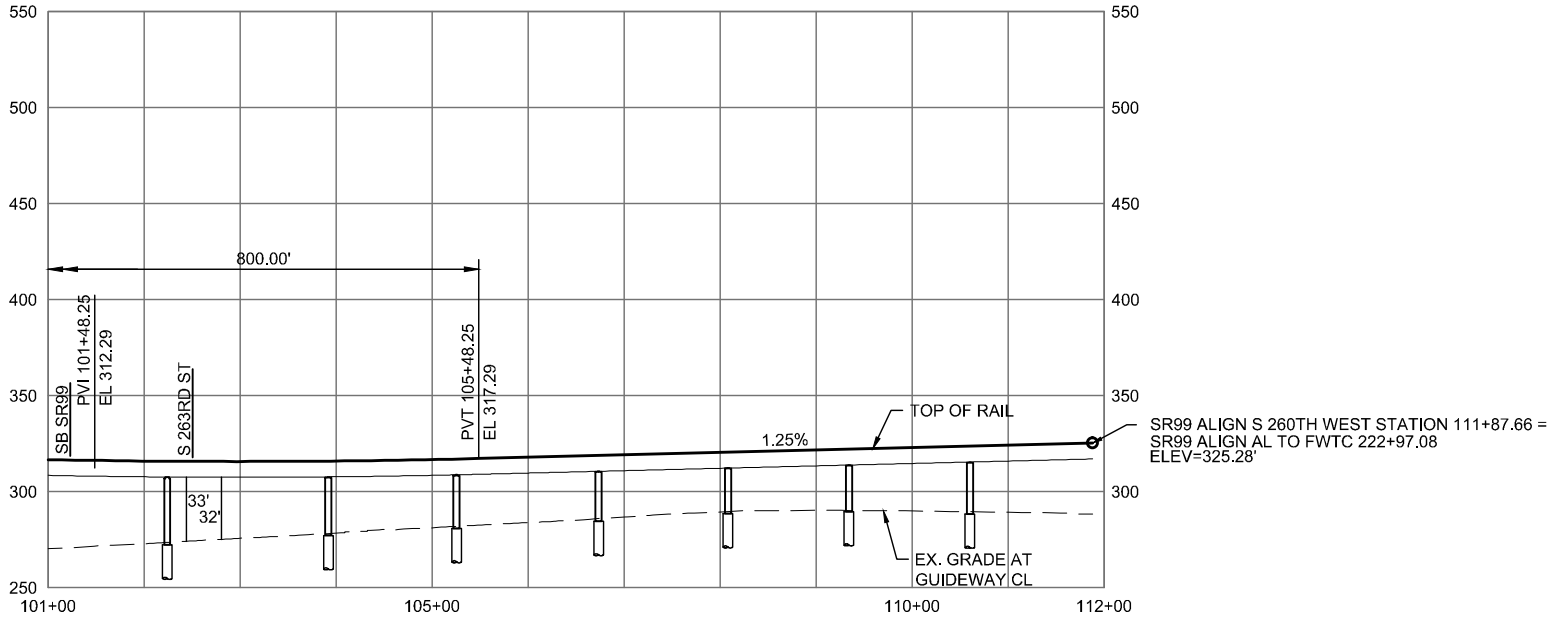
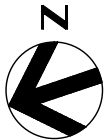
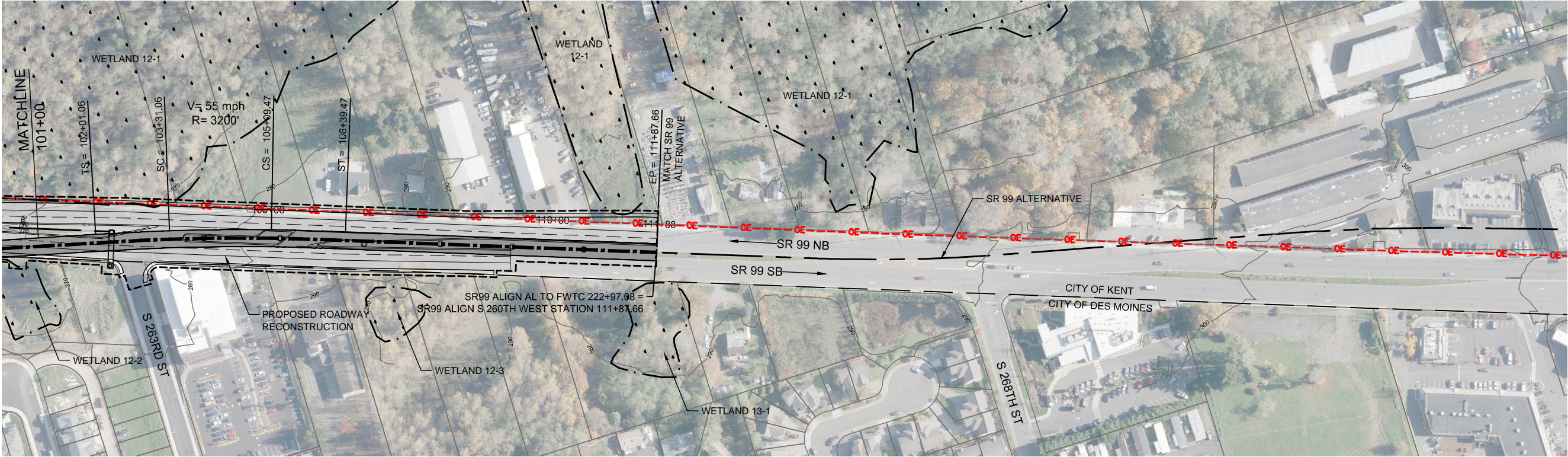


DRAFT EIS - CONCEPTUAL DESIGN
TRACK PLAN AND PROFILE & ROADWAY RECONSTRUCTION
S 260TH WEST STATION OPTION (POTENTIAL ADDITIONAL STATION)
STA 75+00 TO STA 101+00

APRIL 2015

SR99-G4-PP08
68

SOUND TRANSIT FEDERAL WAY LINK EXTENSION



2/25/2015 10:42:17 AM C:\WORKING\SEAD\111196_S260TH WEST STATION.DWG C:\FOX

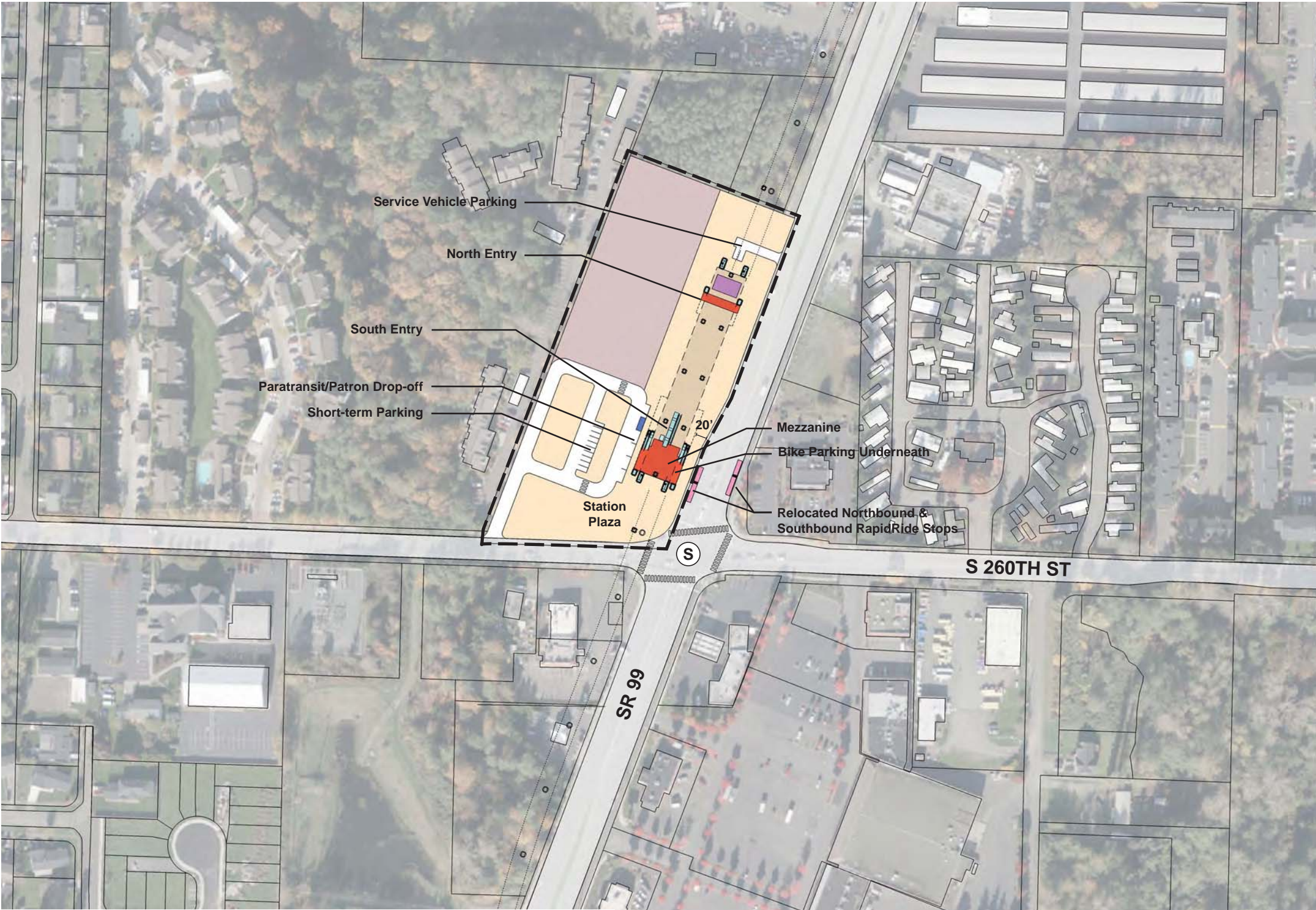


DRAFT EIS - CONCEPTUAL DESIGN
TRACK PLAN AND PROFILE & ROADWAY RECONSTRUCTION
S 260TH WEST STATION OPTION (POTENTIAL ADDITIONAL STATION)
STA 101+00 TO STA 111+87.66

APRIL 2015

SR99-G5-PP09
69

SOUND TRANSIT FEDERAL WAY LINK EXTENSION



ASSUMPTIONS:

S 260th West Station Option	
Alternative(s)	SR 99; I-5 to SR 99
Boardings	1,000
Station Configuration	
Terminus / In-Line	In-Line
Station Type	Side Platform - Elevated
Platform Width	14'
Tail track	N/A
Crossover	TBD
TPSS	No
Program	
KC Metro Ancillary Spaces (SF)	N/A
ST Ancillary Spaces (SF)	1,200
Total Ancillary Spaces (SF)	1,200
Vertical Circulation	
# of entrances	2
# of escalators	3
# of staircases (patron)	3
# of elevators	5
# of emergency stairs	4
Bus/ Paratransit Facilities	
Bus bays (KCM)	N/A
Bus bays (ST)	N/A
Rapid Ride	On-street at SR 99
Bus layover (KCM)	N/A
Bus layover (ST)	N/A
Paratransit	1 space
Communications Facility	Tier 1
Parking & Amenities	
Bike storage	900 SF
Patron drop-off	2 spaces
Short-term patron parking	7 to 10 spaces
Staff parking	N/A
Service/emerg. vehicle park.	2 spaces, combined
Signal bungalow / TPSS park.	N/A
Patron parking	N/A



DRAFT EIS - CONCEPTUAL DESIGN
S 260TH WEST STATION OPTION
(POTENTIAL ADDITIONAL STATION)
SITE PLAN

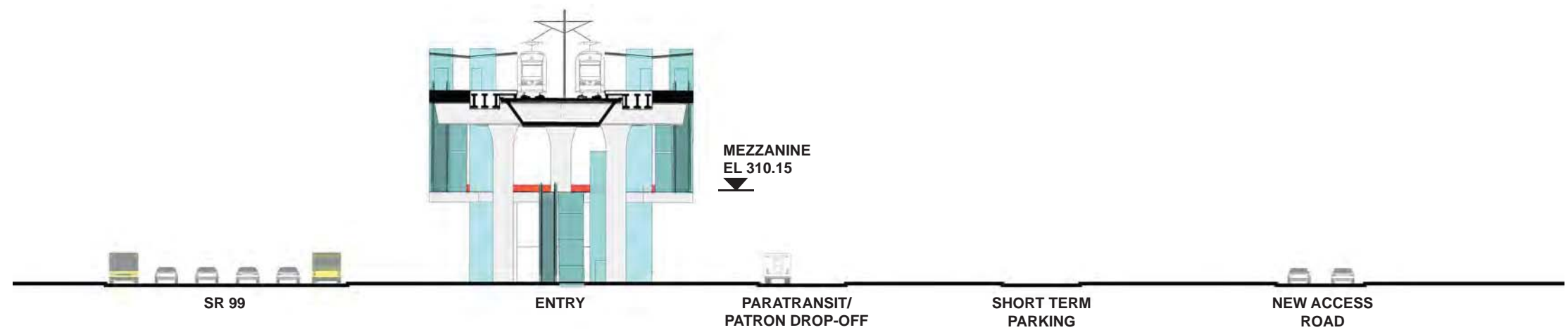


APRIL 2015

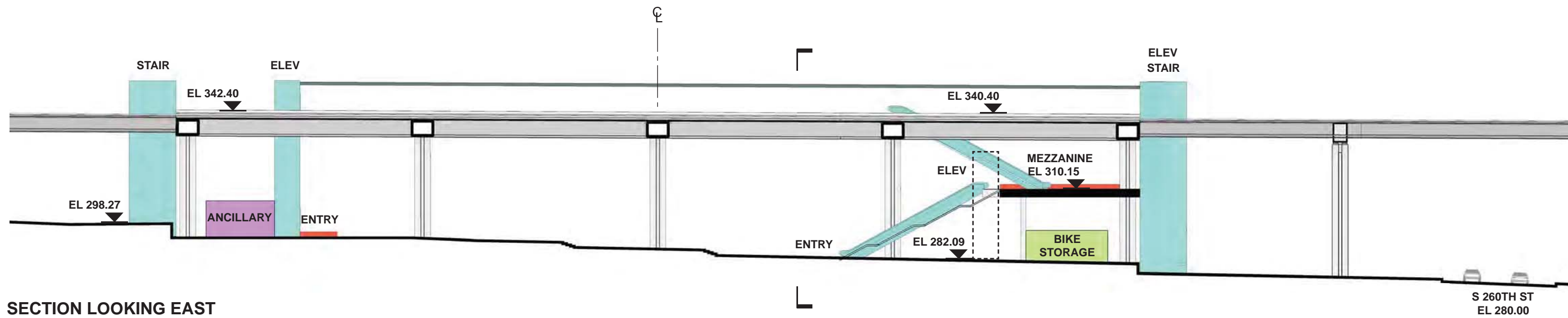
FWLE_S99_AP013
70

7/17/2014 11:36:52 AM J:\HAMMERQUIST\34864\PROJECTS\67612\FEDERAL WAY TRANSIT EXTENSION\2 CLIENT\2 DATA\INCOMING HDR\40717 UPDATED TITLEBLOCK\DES_TTLBK.DWG

SOUND TRANSIT FEDERAL WAY LINK EXTENSION

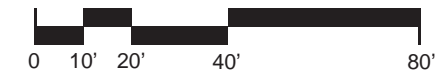


SECTION LOOKING SOUTH



SECTION LOOKING EAST

- | | | | |
|--|------------------------|--|------------------------|
| | STATION PLAZA | | BUS LAYOVER |
| | VERTICAL CIRCULATION | | BUS PICK-UP / DROP OFF |
| | TICKETING / ENTRY HALL | | PARATRANSIT |
| | PLATFORM | | BICYCLE STORAGE |
| | ANCILLARY SPACES | | CONSTRUCTION STAGING |
| | TPSS | | |



DRAFT EIS - CONCEPTUAL DESIGN
S 260TH WEST STATION OPTION
(POTENTIAL ADDITIONAL STATION)
SECTIONS

APRIL 2015

FWLE_S99_AX013

71

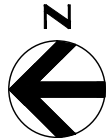
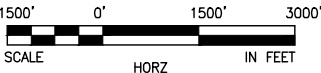
SOUND TRANSIT FEDERAL WAY LINK EXTENSION



SR99 SHEET LAYOUT MATRIX

	1	2	3	4	5	6	7	8	9	10	11	12	13	14	15	16
A - SR 99 ALTERNATIVE	X	X	X	X	X	X	X	X	X	X	X	X	X	X	X	X
B - S 216TH WEST STATION OPTION (POTENTIAL ADDITIONAL STATION)	X	X	X													
C - S 216TH EAST STATION OPTION (POTENTIAL ADDITIONAL STATION)		X	X													
D - KENT/DES MOINES SR 99 MEDIAN STATION OPTION				X	X	X										
E - KENT/DES MOINES SR 99 EAST STATION OPTION				X	X	X	X									
F - KENT/DES MOINES HC CAMPUS STATION OPTION			X	X	X	X	X									
F - KDM HC CAMPUS OPTION FROM S 216TH WEST STATION OPTION						X	X	X	X	X						
G - S 260TH WEST STATION OPTION (POTENTIAL ADDITIONAL STATION)					X	X	X	X	X							
H - S 260TH EAST STATION OPTION (POTENTIAL ADDITIONAL STATION)							X	X	X	X						
J - S 272ND REDONDO TRENCH STATION OPTION								X	X	X	X	X	X	X		
K - FEDERAL WAY SR 99 STATION OPTION															X	X

I - NOT USED

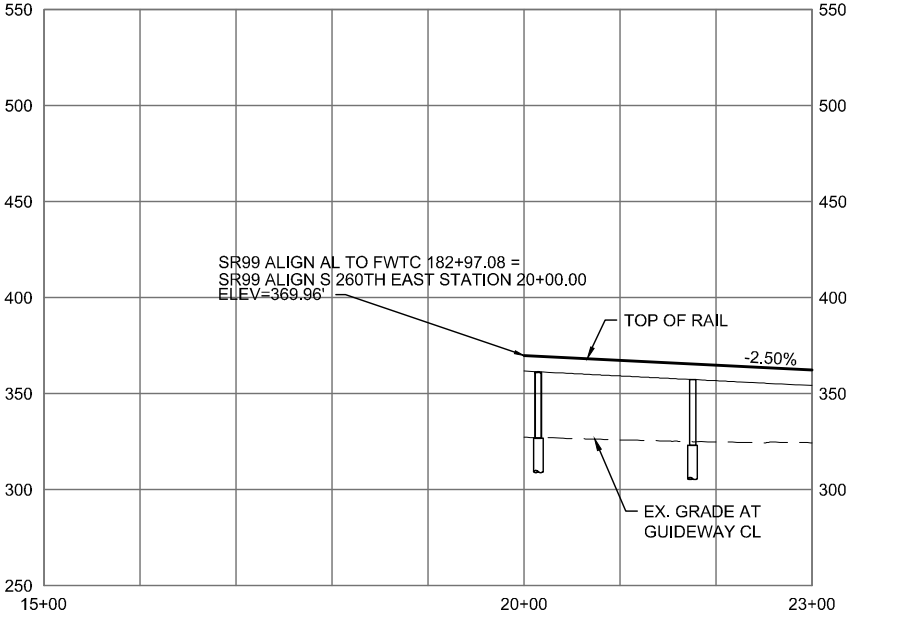
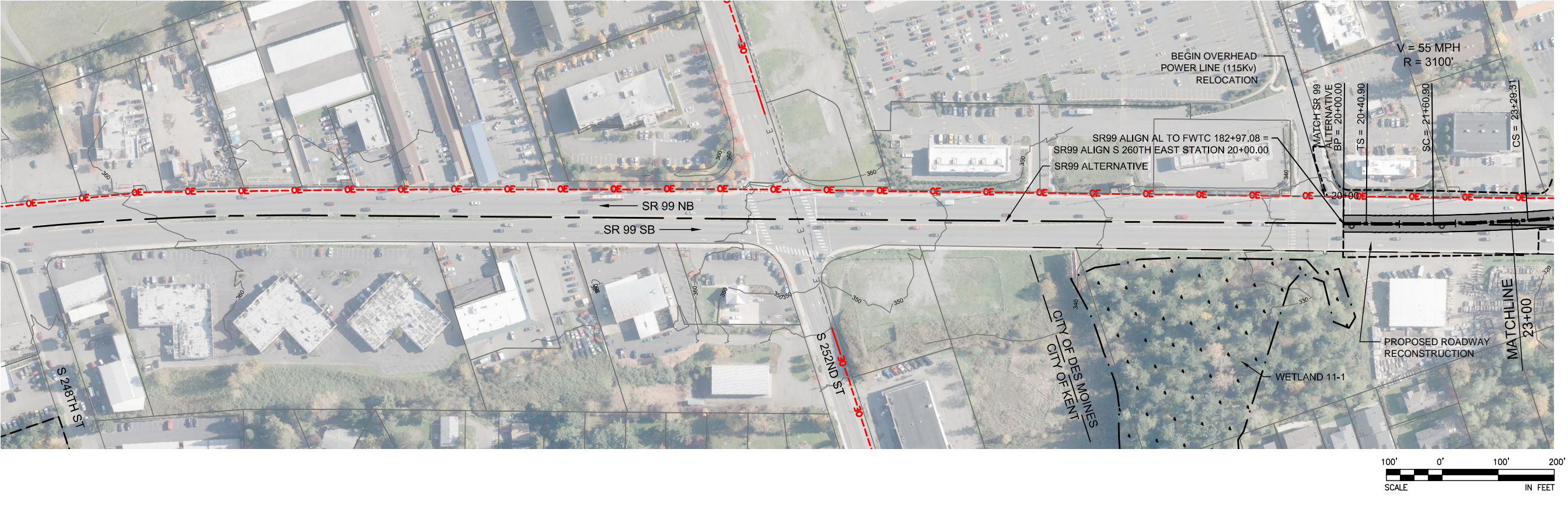


DRAFT EIS - CONCEPTUAL DESIGN
S 260TH EAST STATION OPTION (POTENTIAL ADDITIONAL STATION)
SHEET INDEX KEYMAP

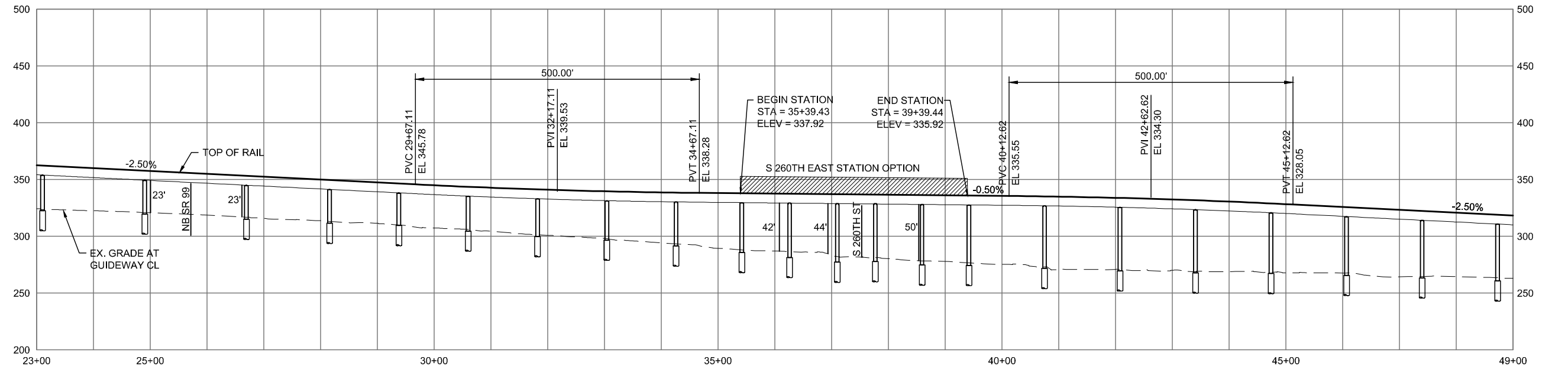
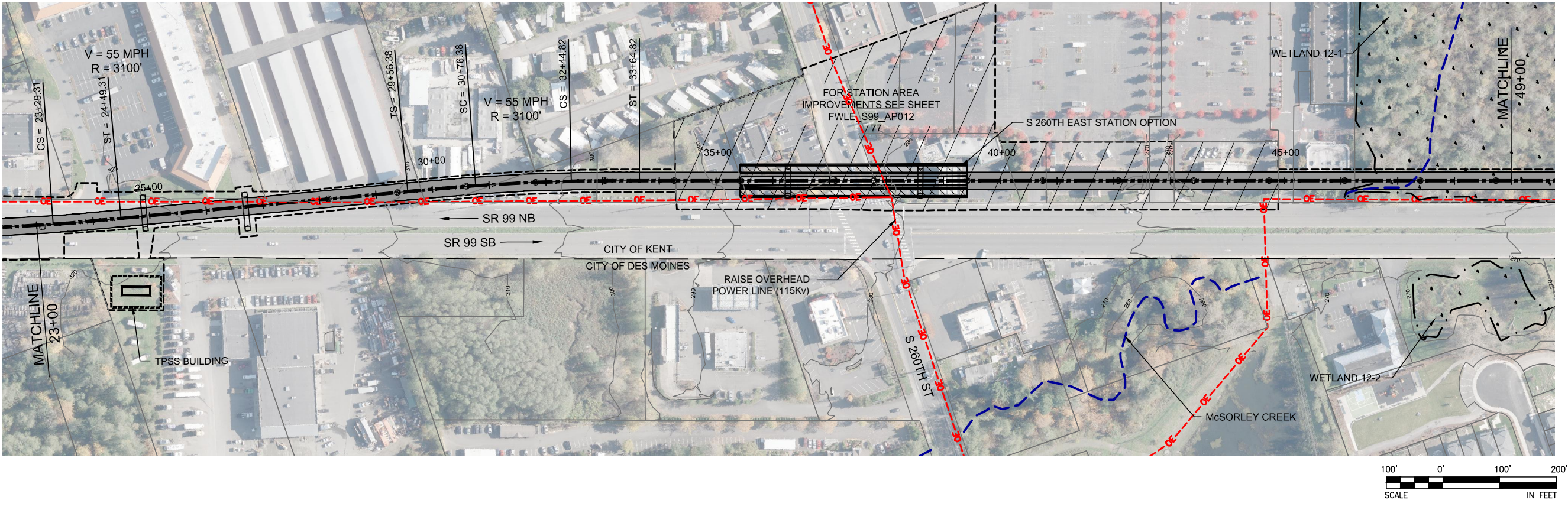
APRIL 2015

SR99-H00-GX02
72

SOUND TRANSIT FEDERAL WAY LINK EXTENSION



SOUND TRANSIT FEDERAL WAY LINK EXTENSION



2/25/2015 10:48:44 AM C:\WORKING\SEAD111119H S260TH EAST STATION.DWG CFOX

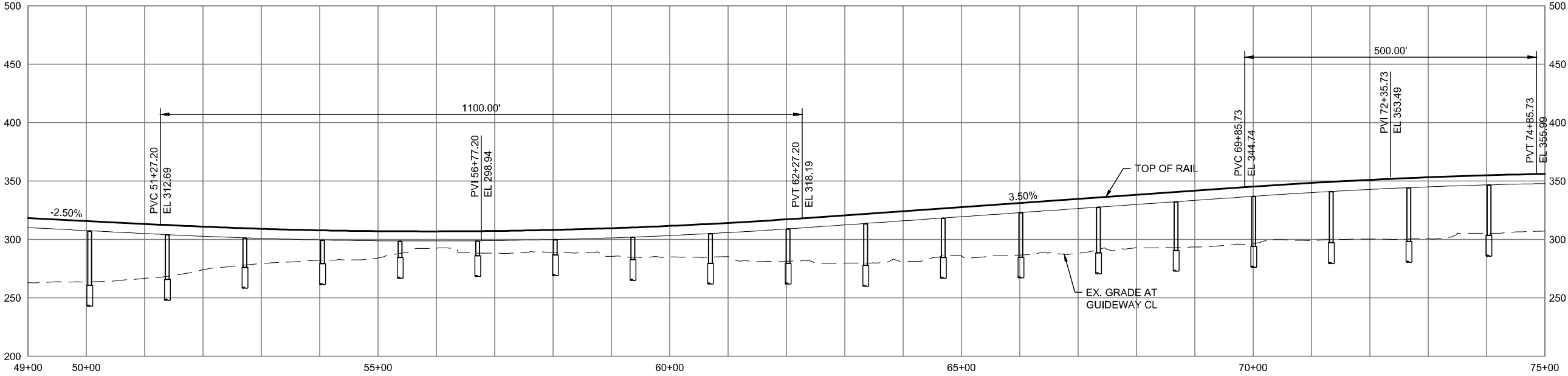
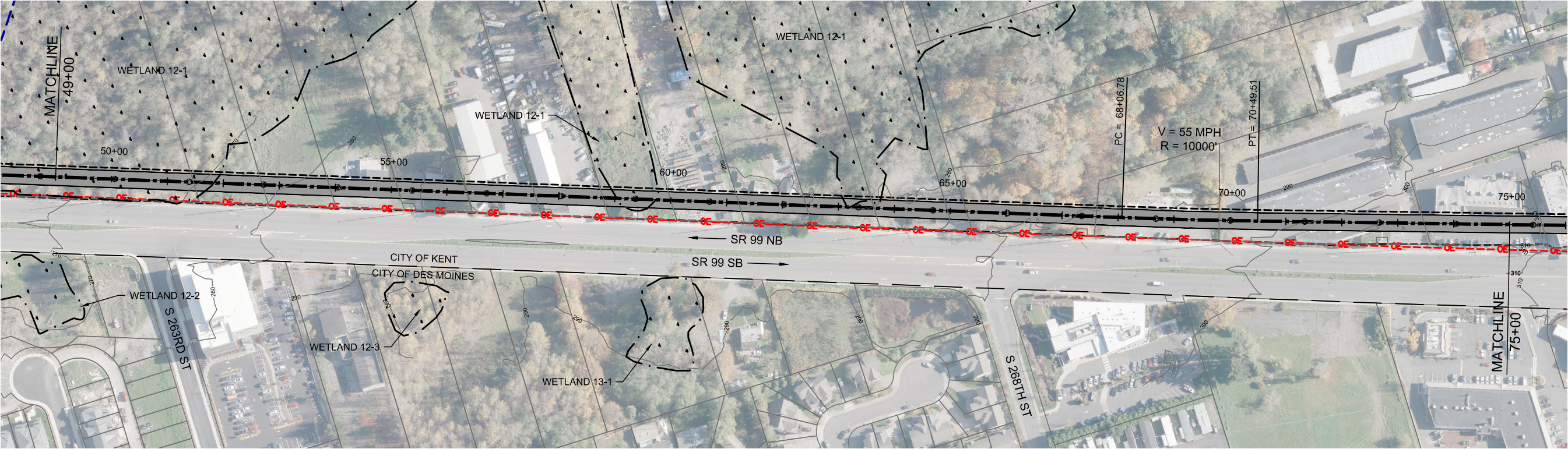


DRAFT EIS - CONCEPTUAL DESIGN
TRACK PLAN & PROFILE AND ROADWAY RECONSTRUCTION
S 260TH EAST STATION OPTION (POTENTIAL ADDITIONAL STATION)
STA 23+00 TO STA 49+00

APRIL 2015

SR99-H2-PP08
74

SOUND TRANSIT FEDERAL WAY LINK EXTENSION



2/25/2015 10:48:53 AM C:\WORKING\SEAD\1141194 S260TH EAST STATION.DWG CFOX

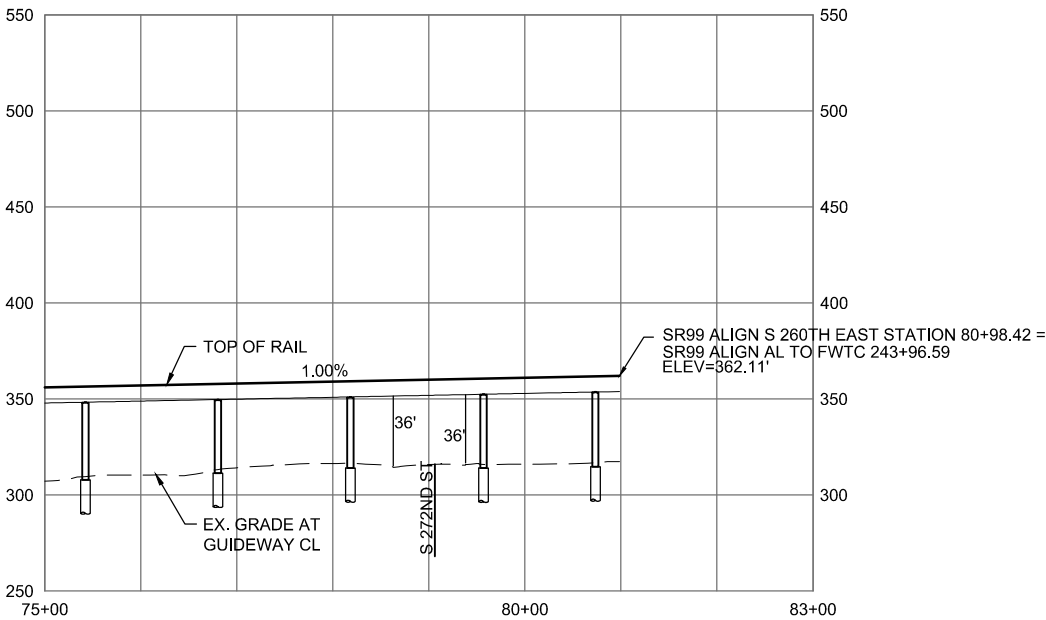
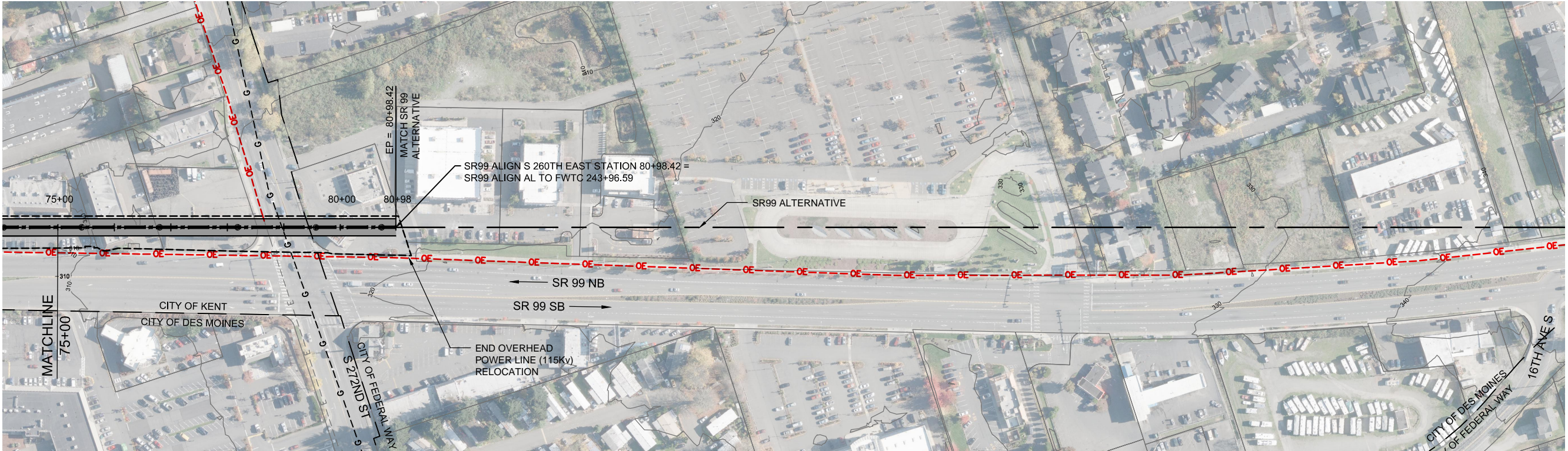


DRAFT EIS - CONCEPTUAL DESIGN
TRACK PLAN & PROFILE AND ROADWAY RECONSTRUCTION
S 260TH EAST STATION OPTION (POTENTIAL ADDITIONAL STATION)
STA 49+00 TO STA 75+00

APRIL 2015

SR99-H3-PP09
75

SOUND TRANSIT FEDERAL WAY LINK EXTENSION



2/27/2015 12:17:52 PM C:\WORKING\SEAD11141194 S260TH EAST STATION.DWG



DRAFT EIS - CONCEPTUAL DESIGN
TRACK PLAN & PROFILE AND ROADWAY RECONSTRUCTION
S 260TH EAST STATION OPTION (POTENTIAL ADDITIONAL STATION)
STA 75+00 TO STA 80+98.42

APRIL 2015

SR99-H4-PP10
76

SOUND TRANSIT FEDERAL WAY LINK EXTENSION



- STATION PLAZA

VERTICAL CIRCULATION

TICKETING / ENTRY HALL

PLATFORM

ANCILLARY SPACES

TPSS
- BUS LAYOVER

BUS PICK-UP / DROP OFF

PARATRANSIT

BICYCLE STORAGE

CONSTRUCTION STAGING

- STATION AREA FOOTPRINT

S

SIGNALIZED INTERSECTION (EXISTING)

S

SIGNALIZED INTERSECTION (PROPOSED)

ASSUMPTIONS:

S 260th East Station Option	
Alternative(s)	SR 99; I-5 to SR 99
Boardings	1,000
Station Configuration	
Terminus / In-Line	In-Line
Station Type	Side Platform - Elevated
Platform Width	14'
Tail track	N/A
Crossover	TBD
TPSS	No
Program	
KC Metro Ancillary Spaces (SF)	N/A
ST Ancillary Spaces (SF)	1,200
Total Ancillary Spaces (SF)	1,200
Vertical Circulation	
# of entrances	2
# of escalators	6
# of staircases (patron)	6
# of elevators	6
# of emergency stairs	4
Bus/ Paratransit Facilities	
Bus bays (KCM)	N/A
Bus bays (ST)	N/A
Rapid Ride	On-street at SR 99
Bus layover (KCM)	N/A
Bus layover (ST)	N/A
Paratransit	1 space
Communications Facility	Tier 1
Parking & Amenities	
Bike storage	900 SF
Patron drop-off	2 spaces
Short-term patron parking	7 to 10 spaces
Staff parking	N/A
Service/emerg. vehicle park.	2 spaces, combined
Signal bungalow / TPSS park.	N/A
Patron parking	N/A

7/17/2014 11:36:52 AM JHAMMERQUIST G:\BWA PROJECTS\67612 FEDERAL WAY TRANSIT EXTENSION\2 CLIENT\2 DATA\INCOMING HDR\40717 UPDATED TITLEBLOCK.DWG

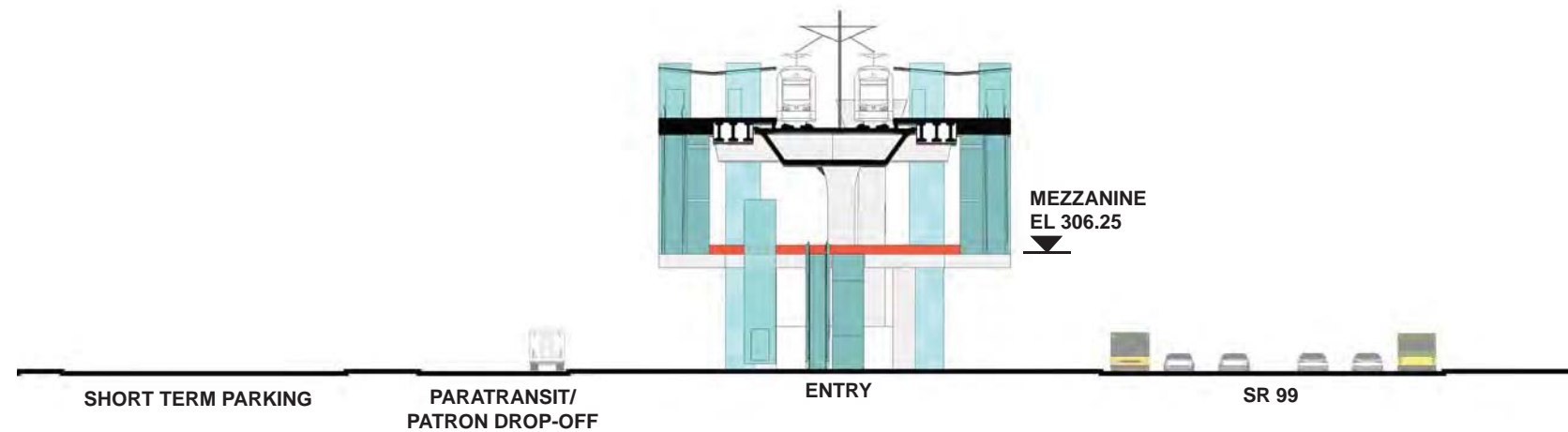


DRAFT EIS - CONCEPTUAL DESIGN
S 260TH EAST STATION OPTION
(POTENTIAL ADDITIONAL STATION)
SITE PLAN

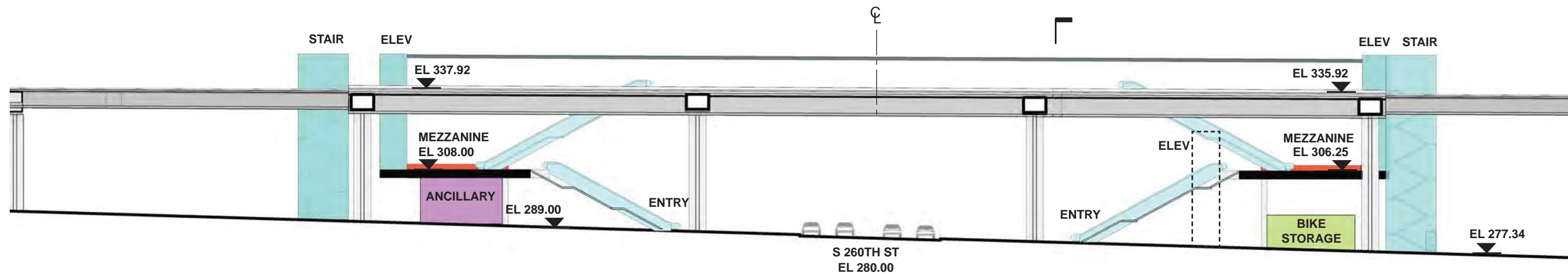
APRIL 2015

FWLE_S99_AP012








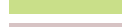



SOUND TRANSIT FEDERAL WAY LINK EXTENSION

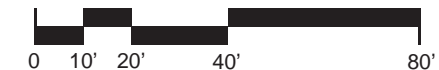


SECTION LOOKING SOUTH



SECTION LOOKING EAST

- | | |
|--|--|
|  STATION PLAZA |  BUS LAYOVER |
|  VERTICAL CIRCULATION |  BUS PICK-UP / DROP OFF |
|  TICKETING / ENTRY HALL |  PARATRANSIT |
|  PLATFORM |  BICYCLE STORAGE |
|  ANCILLARY SPACES |  CONSTRUCTION STAGING |
|  TPSS | |



DRAFT EIS - CONCEPTUAL DESIGN
S 260TH EAST STATION OPTION
(POTENTIAL ADDITIONAL STATION)
SECTIONS

APRIL 2015

FWLE_S99_AX012

78