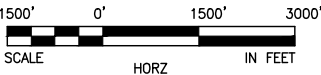


SOUND TRANSIT FEDERAL WAY LINK EXTENSION



SR99 SHEET LAYOUT MATRIX																
	1	2	3	4	5	6	7	8	9	10	11	12	13	14	15	16
A - SR 99 ALTERNATIVE	X	X	X	X	X	X	X	X	X	X	X	X	X	X	X	X
B - S 216TH WEST STATION OPTION (POTENTIAL ADDITIONAL STATION)	X	X	X													
C - S 216TH EAST STATION OPTION (POTENTIAL ADDITIONAL STATION)		X	X													
D - KENT/DES MOINES SR 99 MEDIAN STATION OPTION				X	X	X										
E - KENT/DES MOINES SR 99 EAST STATION OPTION				X	X	X	X									
F - KENT/DES MOINES HC CAMPUS STATION OPTION			X	X	X	X	X									
F - KDM HC CAMPUS OPTION FROM S 216TH WEST STATION OPTION						X	X	X	X	X						
G - S 260TH WEST STATION OPTION (POTENTIAL ADDITIONAL STATION)					X	X	X	X	X							
H - S 260TH EAST STATION OPTION (POTENTIAL ADDITIONAL STATION)							X	X	X	X						
J - S 272ND REDONDO TRENCH STATION OPTION								X	X	X	X	X	X	X		
K - FEDERAL WAY SR 99 STATION OPTION															X	X

I - NOT USED



2/25/2015 9:20:55 AM
C:\P\WORKING\SEAD\11417\SR99-A00-GX02.DWG

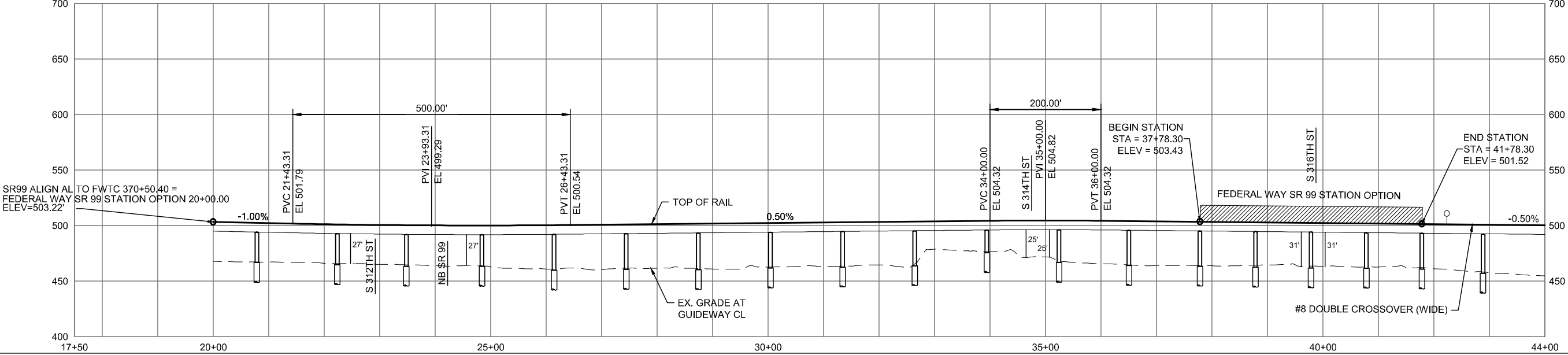
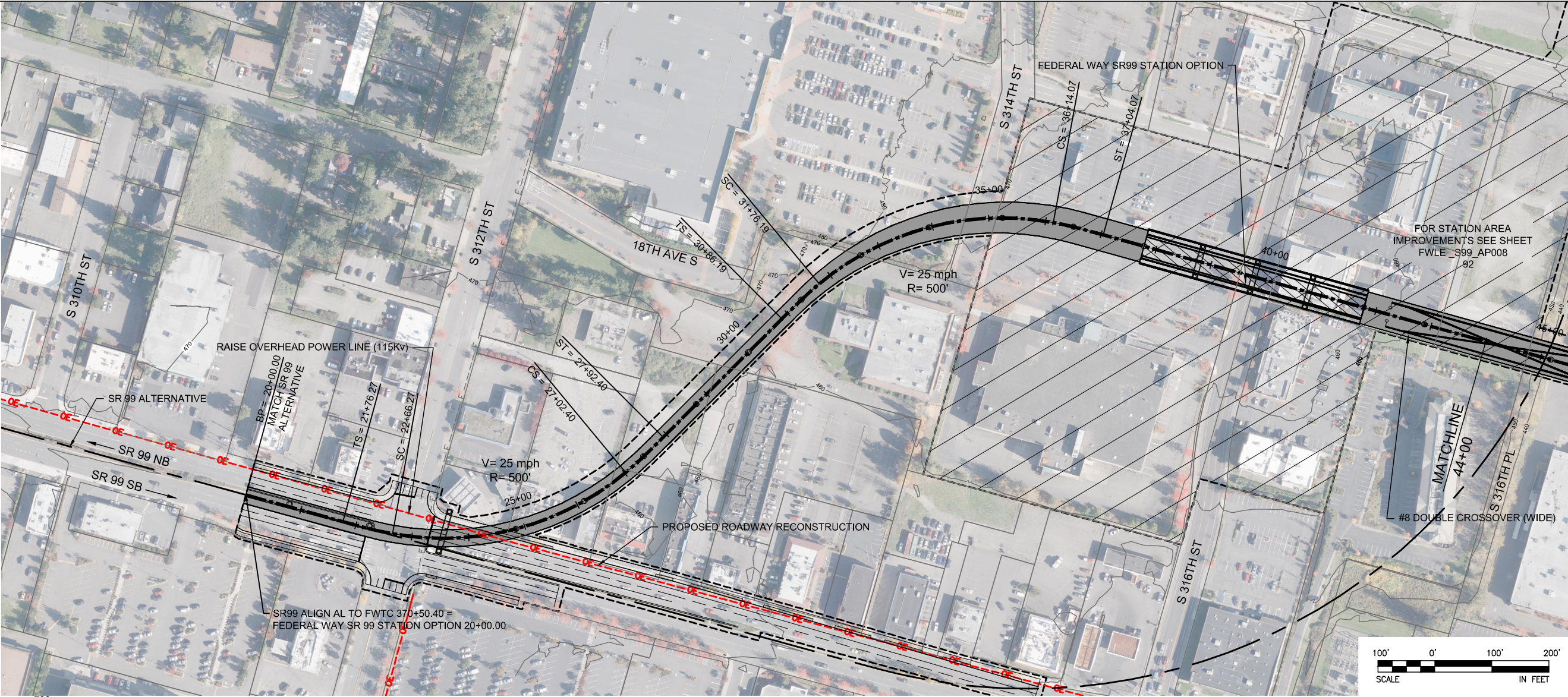


DRAFT EIS - CONCEPTUAL DESIGN
FEDERAL WAY SR 99 STATION OPTION
SHEET INDEX KEYMAP

APRIL 2015

SR99-K00-GX02
89

SOUND TRANSIT FEDERAL WAY LINK EXTENSION



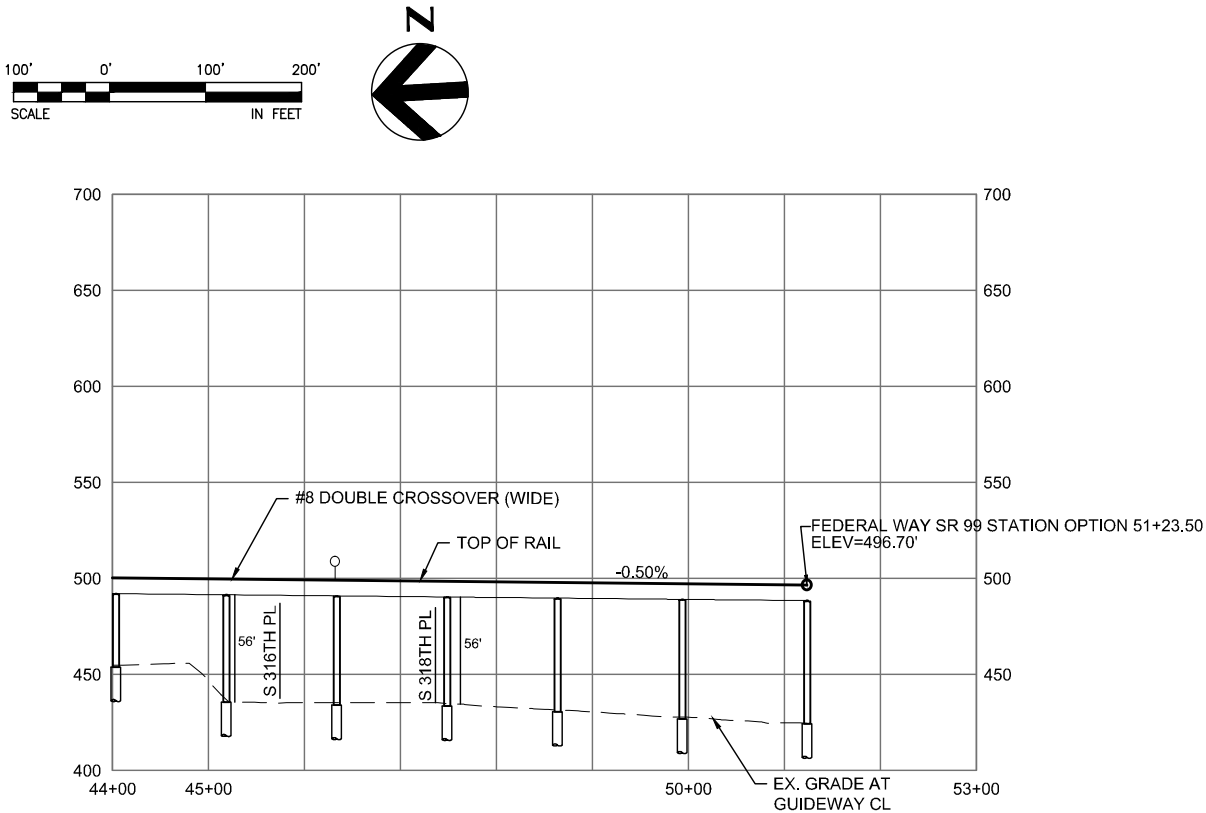
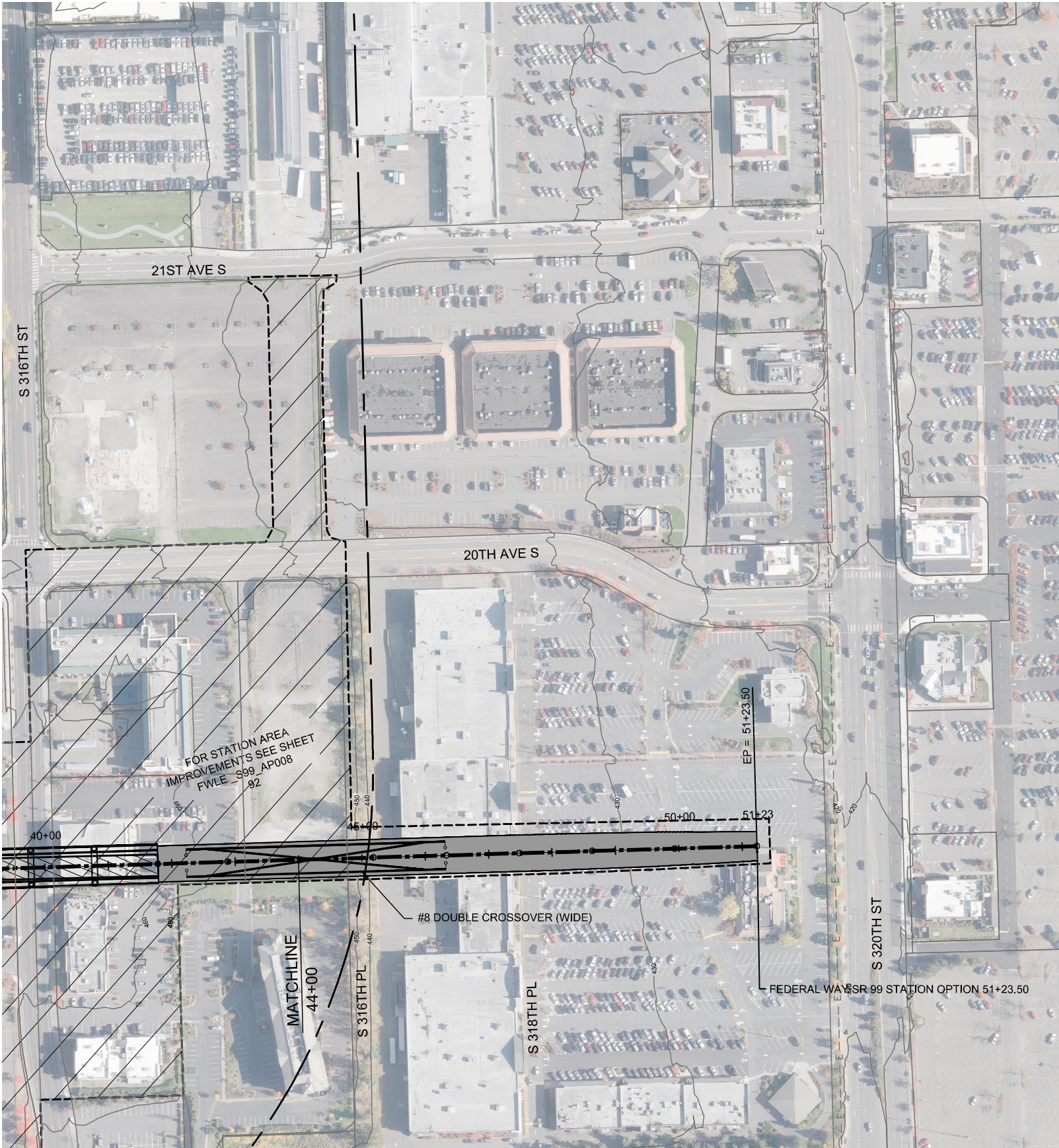
DRAFT EIS - CONCEPTUAL DESIGN
TRACK PLAN & PROFILE AND ROADWAY RECONSTRUCTION
FEDERAL WAY SR 99 STATION OPTION
STA 20+00 TO STA 44+00



APRIL 2015

2/27/2015 2:37:29 PM C:\WORKING\SEAD114119K_PVT SR99 STATION.DWG

SOUND TRANSIT FEDERAL WAY LINK EXTENSION

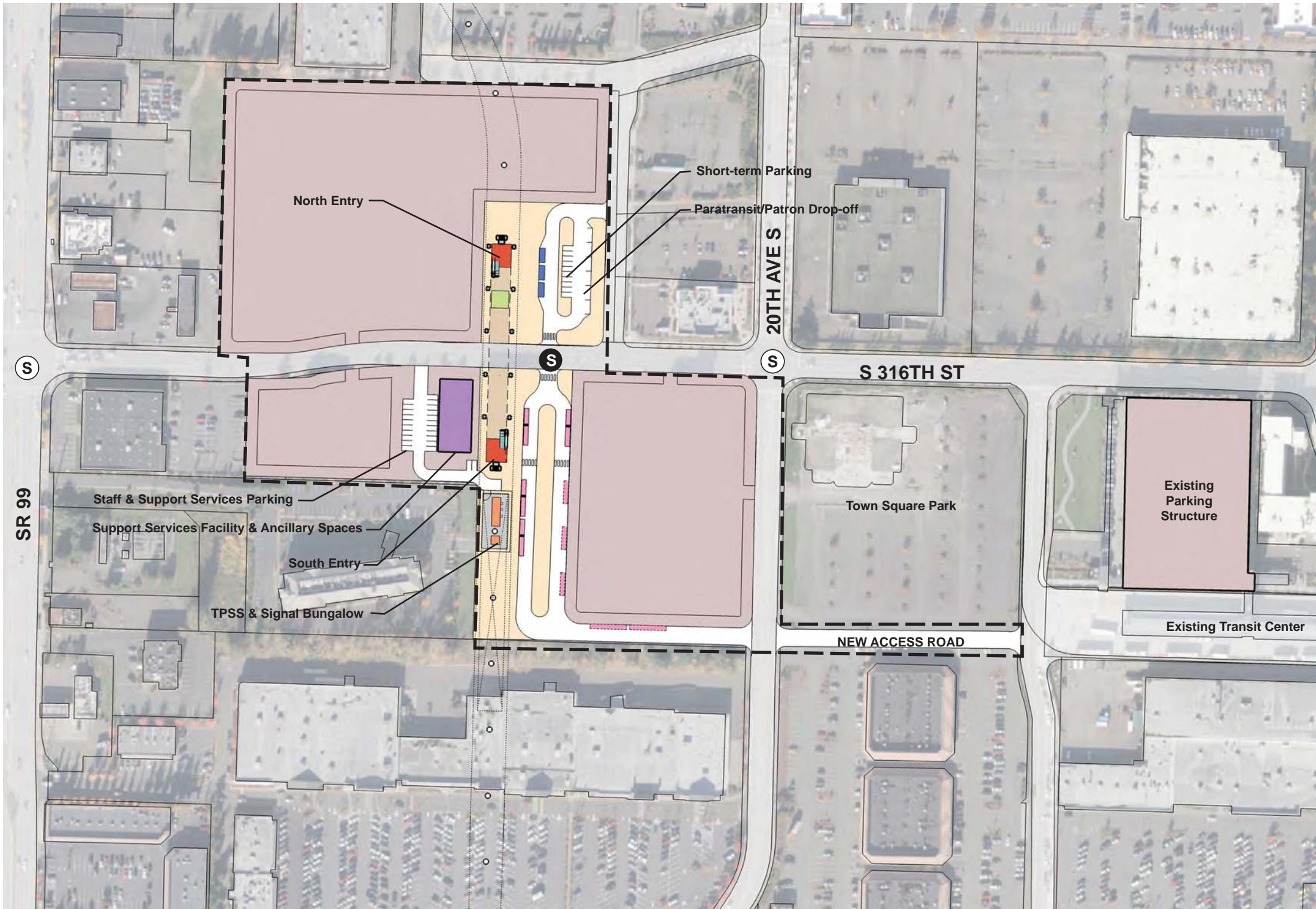


DRAFT EIS - CONCEPTUAL DESIGN
TRACK PLAN & PROFILE AND ROADWAY RECONSTRUCTION
FEDERAL WAY SR 99 STATION OPTION
STA 44+00 TO STA 51+23.50



APRIL 2015

SOUND TRANSIT FEDERAL WAY LINK EXTENSION



- STATION PLAZA

VERTICAL CIRCULATION

TICKETING / ENTRY HALL

PLATFORM

ANCILLARY SPACES

TPSS
- BUS LAYOVER

BUS PICK-UP / DROP OFF

PARATRANSIT

BICYCLE STORAGE

CONSTRUCTION STAGING / PARKING

- STATION AREA FOOTPRINT

SIGNALIZED INTERSECTION (EXISTING)

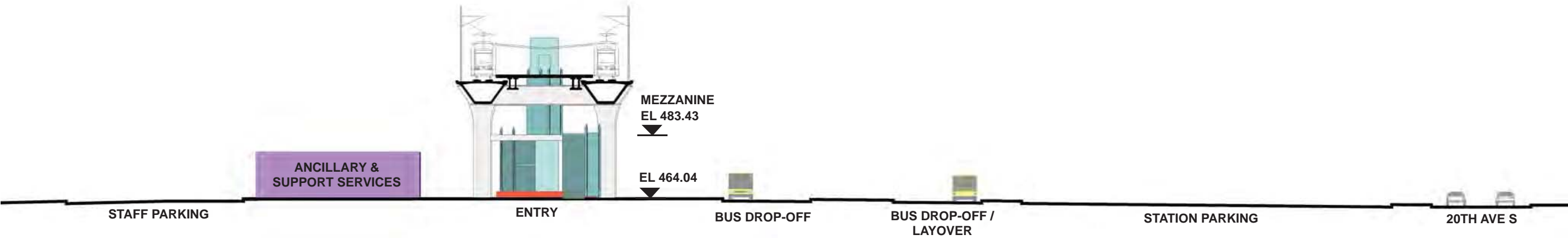
SIGNALIZED INTERSECTION (PROPOSED)

ASSUMPTIONS:

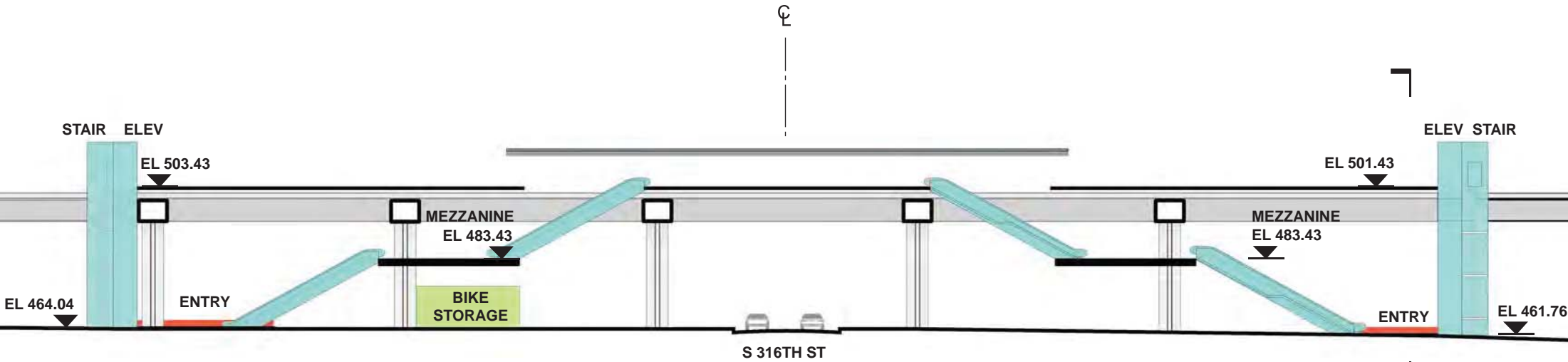
Federal Way SR 99 Station Option	
Alternative(s)	SR 99; I-5 to SR 99
Boardings	8,500
Station Configuration	
Terminus / In-Line	Terminus
Station Type	Center Platform - Elevated
Platform Width	34'
Tail track	900'
Crossover	Yes
TPSS	Yes
Program	
KC Metro Ancillary Spaces (SF)	200
ST Ancillary Spaces (SF)	1,800
Support Services (SF)	5,000
Total Ancillary Spaces (SF)	7,000
Vertical Circulation	
# of entrances	2
# of escalators	4
# of staircases (patron)	4
# of elevators	2
# of emergency stairs	2
Bus/ Paratransit Facilities	
Bus bays (KCM)	2 bays, one 60' coach each
Bus bays (ST)	1 bay, two 60' coaches
Rapid Ride	
Bus layover (KCM)	3 bays, one 40' coach each
Bus layover (ST)	1 bay, two 60' coaches
Paratransit spaces	3 spaces
Communications Facility	Tier 3
Parking & Amenities	
Bike storage	900 SF
Patron drop-off	6 spaces
Short-term patron parking	7 to 10 spaces
Staff parking	4 spaces
Support Services parking	15 spaces
Service/emerg. vehicle park.	2 spaces, separate lot
Signal bungalow / TPSS park.	2 spaces, dedicated
Existing patron parking	1,190 spaces
Additional patron parking	400 spaces
Total proposed patron parking	1590 spaces (structure)



SOUND TRANSIT FEDERAL WAY LINK EXTENSION

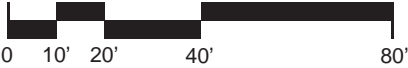


SECTION LOOKING SOUTH



SECTION LOOKING EAST

- | | |
|------------------------|--------------------------------|
| STATION PLAZA | BUS LAYOVER |
| VERTICAL CIRCULATION | BUS PICK-UP / DROP OFF |
| TICKETING / ENTRY HALL | PARATRANSIT |
| PLATFORM | BICYCLE STORAGE |
| ANCILLARY SPACES | CONSTRUCTION STAGING / PARKING |
| TPSS | |



DRAFT EIS - CONCEPTUAL DESIGN
FEDERAL WAY SR 99 STATION OPTION
SECTIONS

APRIL 2015
FWLE_S99_AX008
93

7/17/2014 11:36:52 AM JHAMMERQUIST G:\BWA\PROJECTS\67612\FEDERAL WAY TRANSIT EXTENSION\2 CLIENT\2 DATA\INCOMING HDR\40717 UPDATED TITLEBLOCK\DES_TTLB\KDWG

