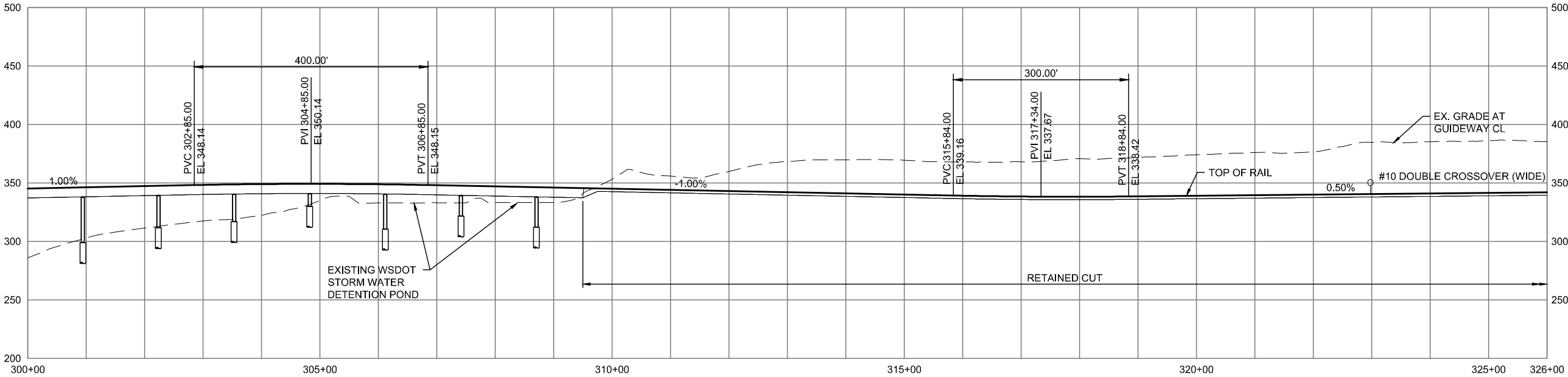
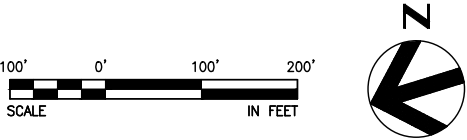
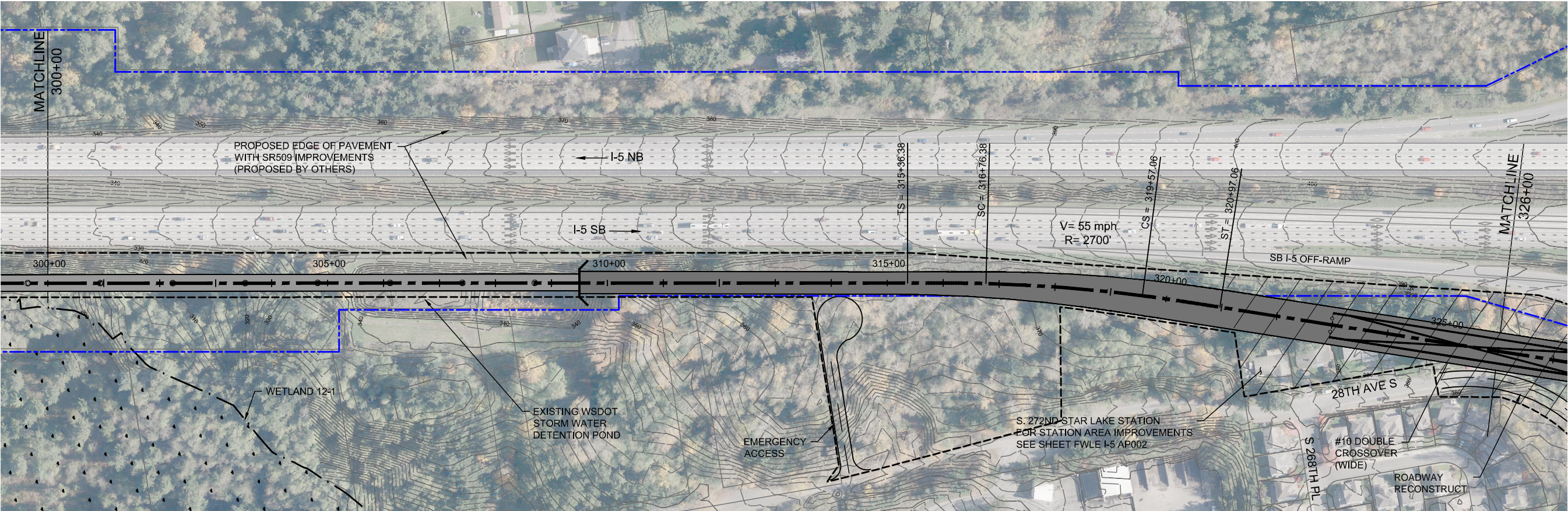


SOUND TRANSIT FEDERAL WAY LINK EXTENSION



2/25/2015 2:31:32 PM BHARRIS C:\PWORKING\SEAD\07842A_P\FILE I-5 MAINLINE.DWG

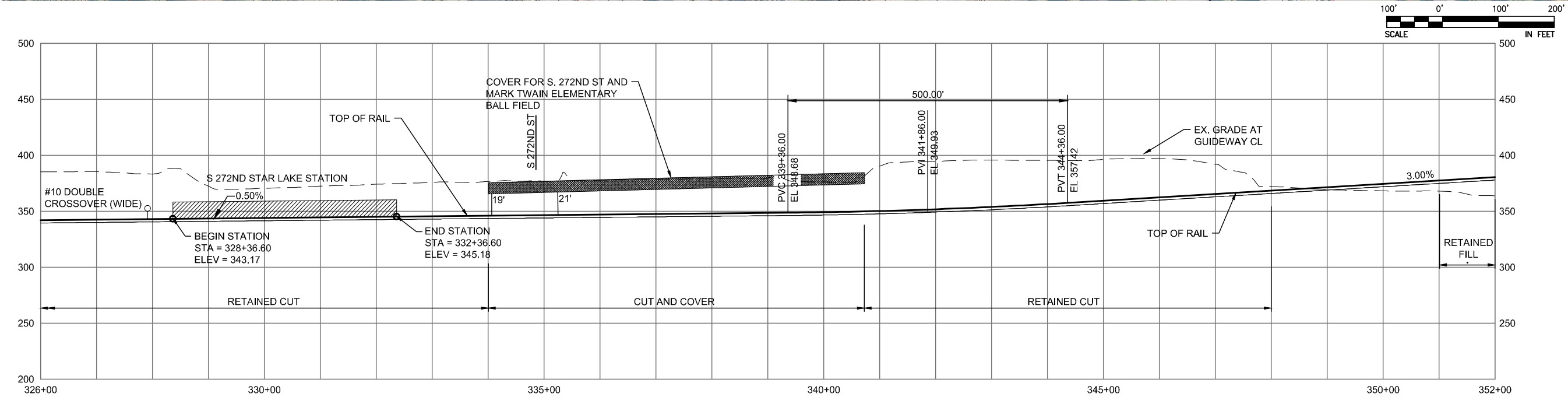
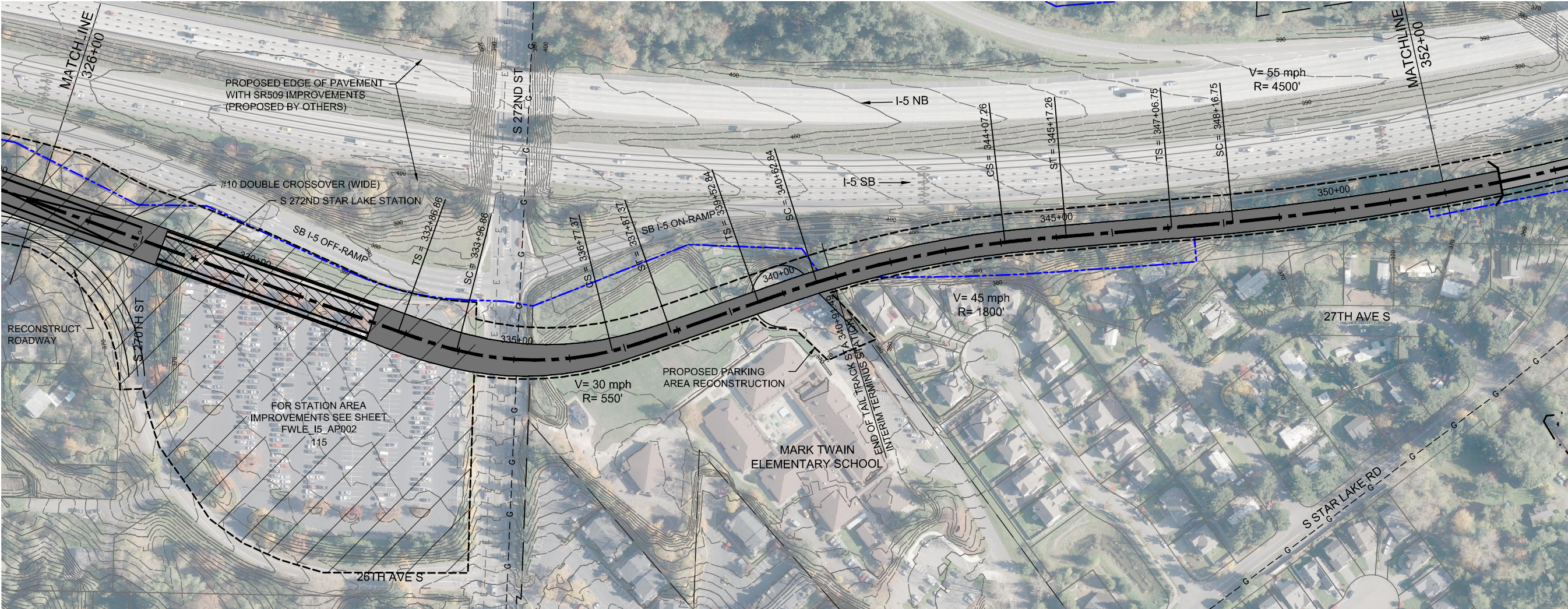


DRAFT EIS - CONCEPTUAL DESIGN
TRACK PLAN & PROFILE AND ROADWAY RECONSTRUCTION
I-5 ALTERNATIVE
STA 300+00 TO STA 326+00

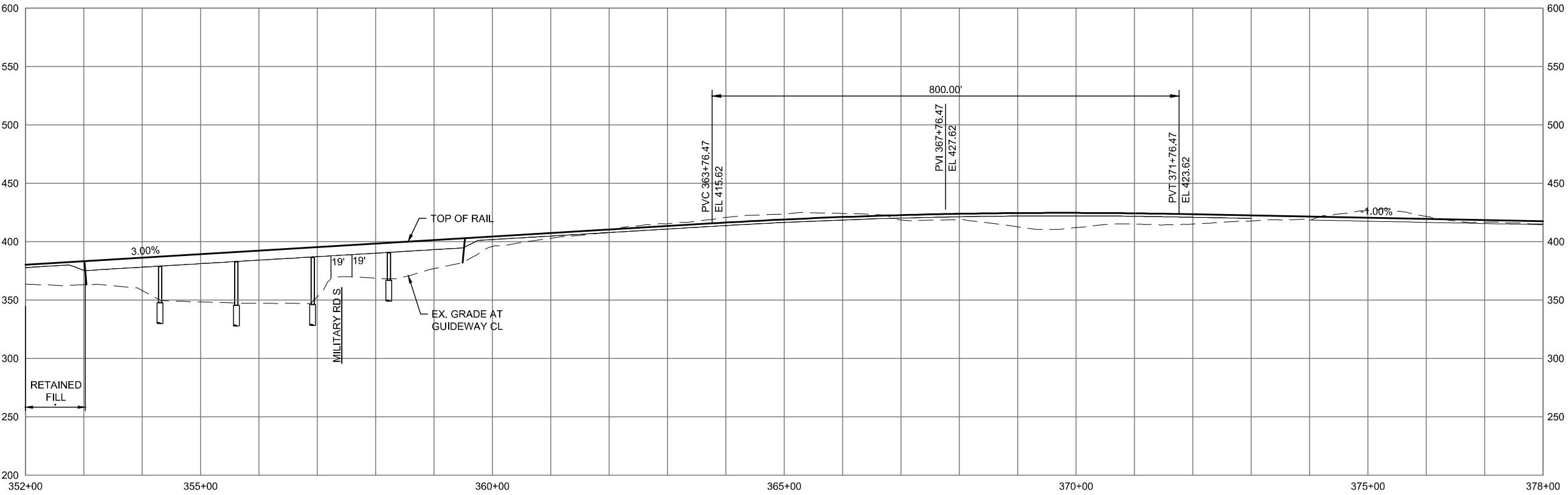
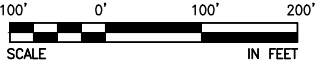
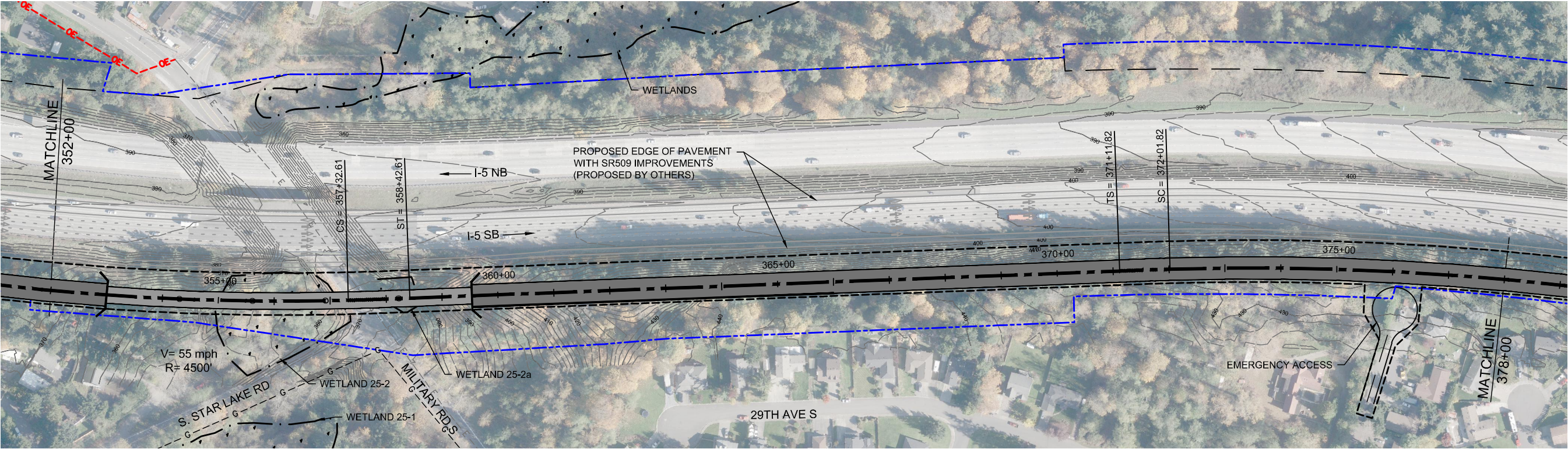
APRIL 2015

I5-A9-PP09
105

SOUND TRANSIT FEDERAL WAY LINK EXTENSION



SOUND TRANSIT FEDERAL WAY LINK EXTENSION



2/25/2015 12:31:54 PM
C:\WORKING\SEAD\07842A_P\FILE 15 MAINLINE.DWG

BRHARRIS

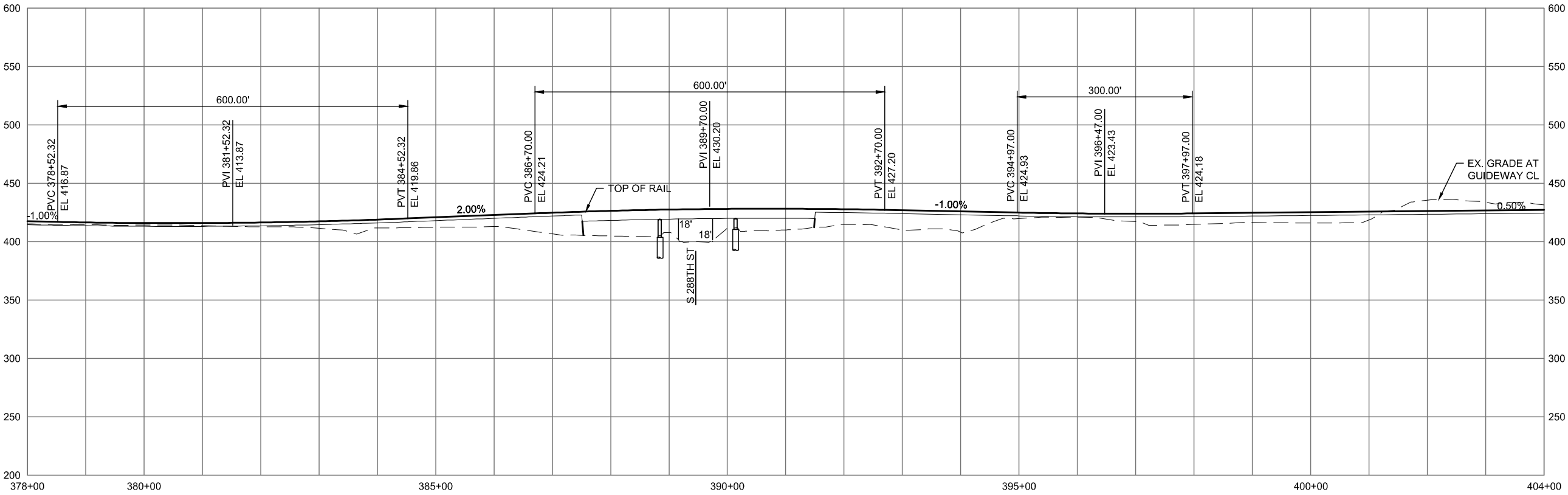
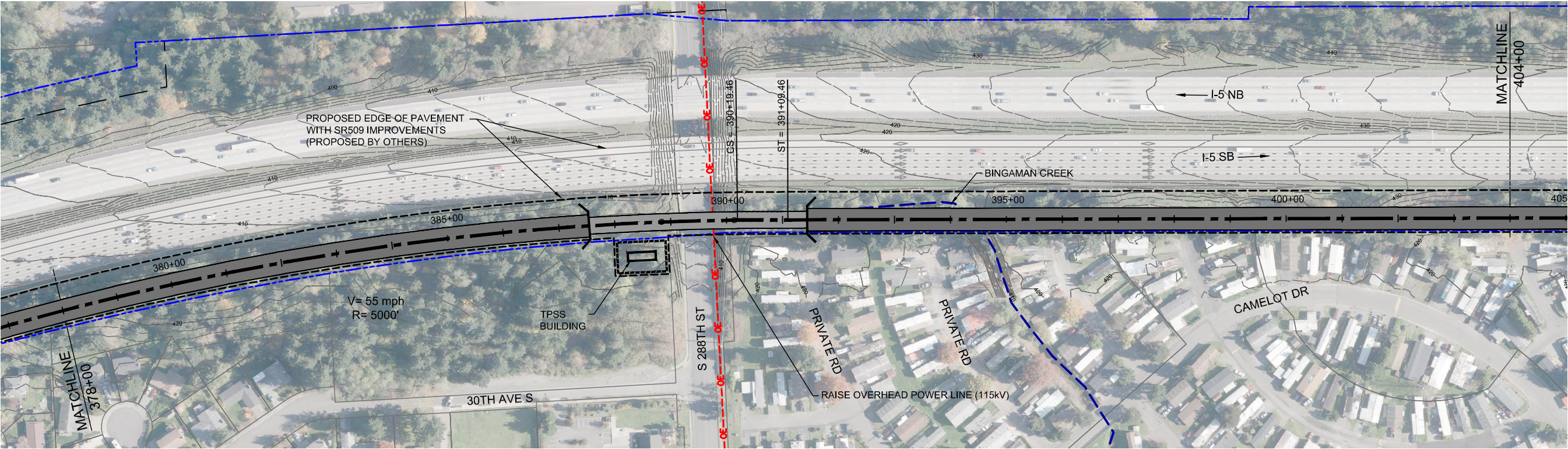


DRAFT EIS - CONCEPTUAL DESIGN
TRACK PLAN & PROFILE AND ROADWAY RECONSTRUCTION
I-5 ALTERNATIVE
STA 352+00 TO STA 378+00

APRIL 2015

I5-A11-PP11
107

SOUND TRANSIT FEDERAL WAY LINK EXTENSION



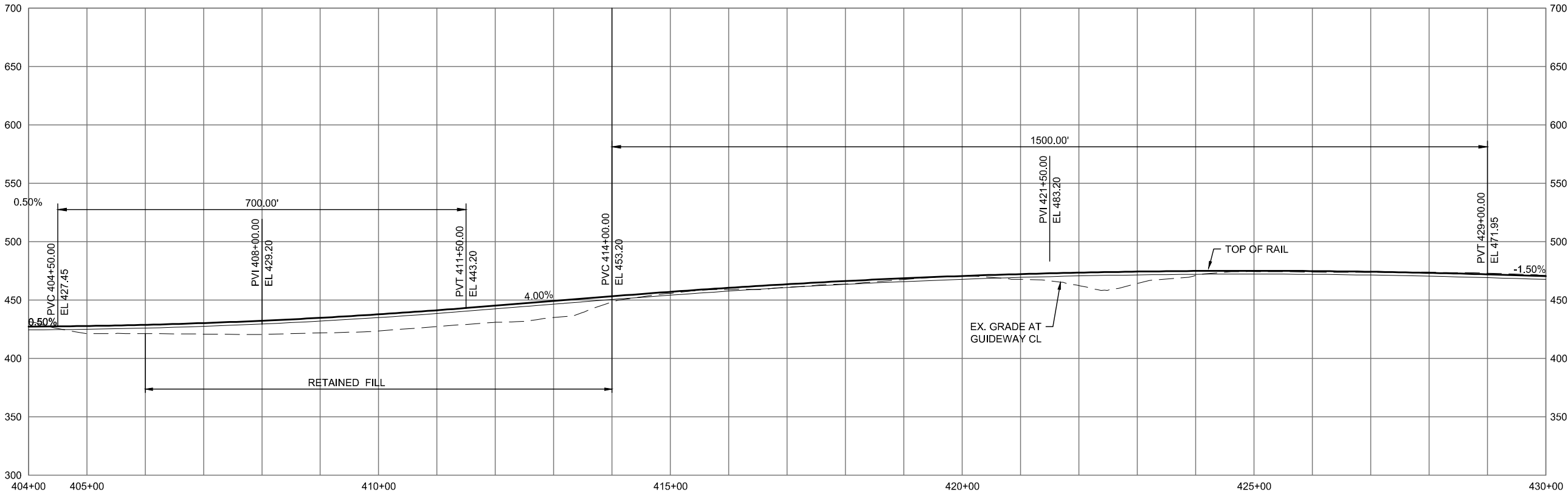
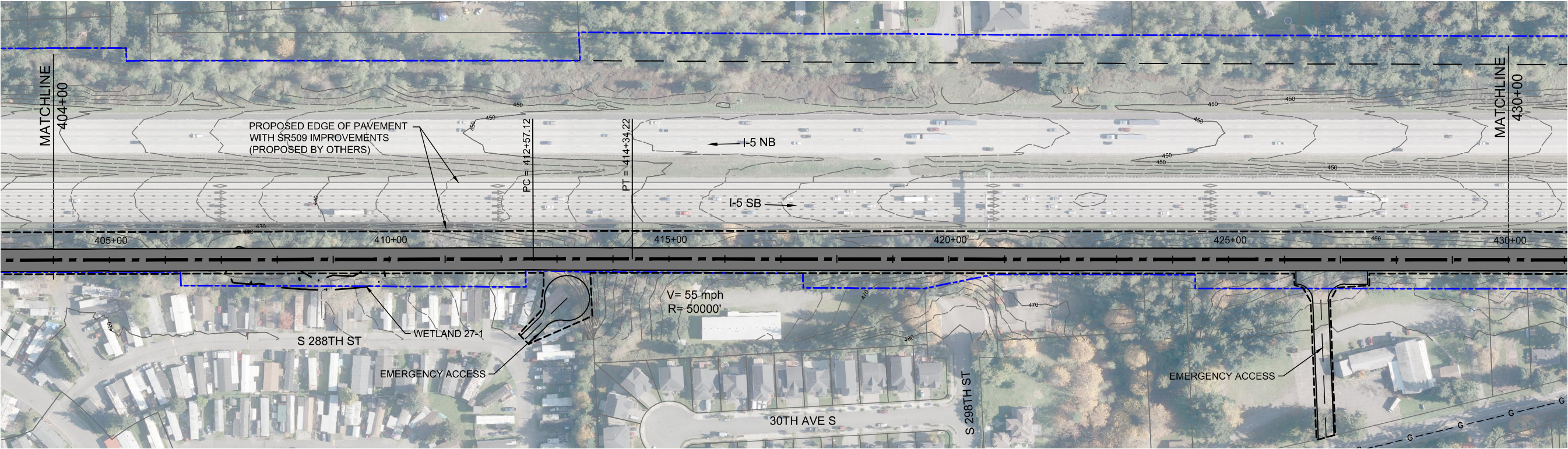
DRAFT EIS - CONCEPTUAL DESIGN
TRACK PLAN & PROFILE AND ROADWAY RECONSTRUCTION
I-5 ALTERNATIVE
STA 378+00 TO STA 404+00

APRIL 2015

I5-A12-PP12
108



SOUND TRANSIT FEDERAL WAY LINK EXTENSION



2/25/2015 12:32:14 PM
C:\WORKING\SEAD\07842A_P\FILE 15 MAINLINE.DWG

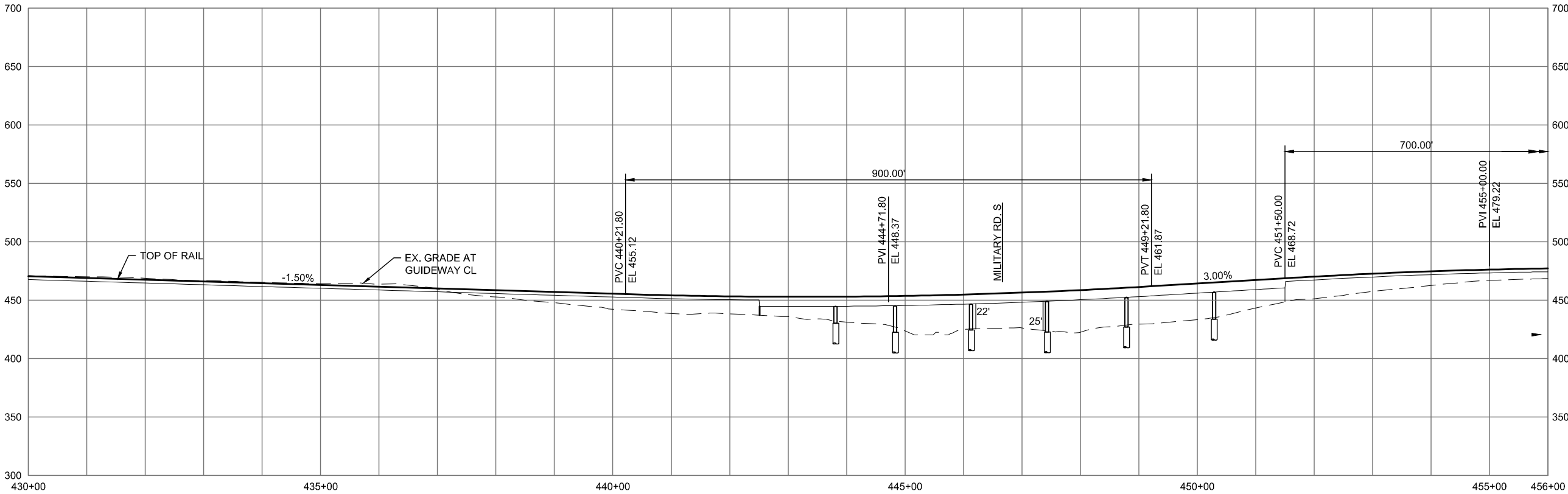
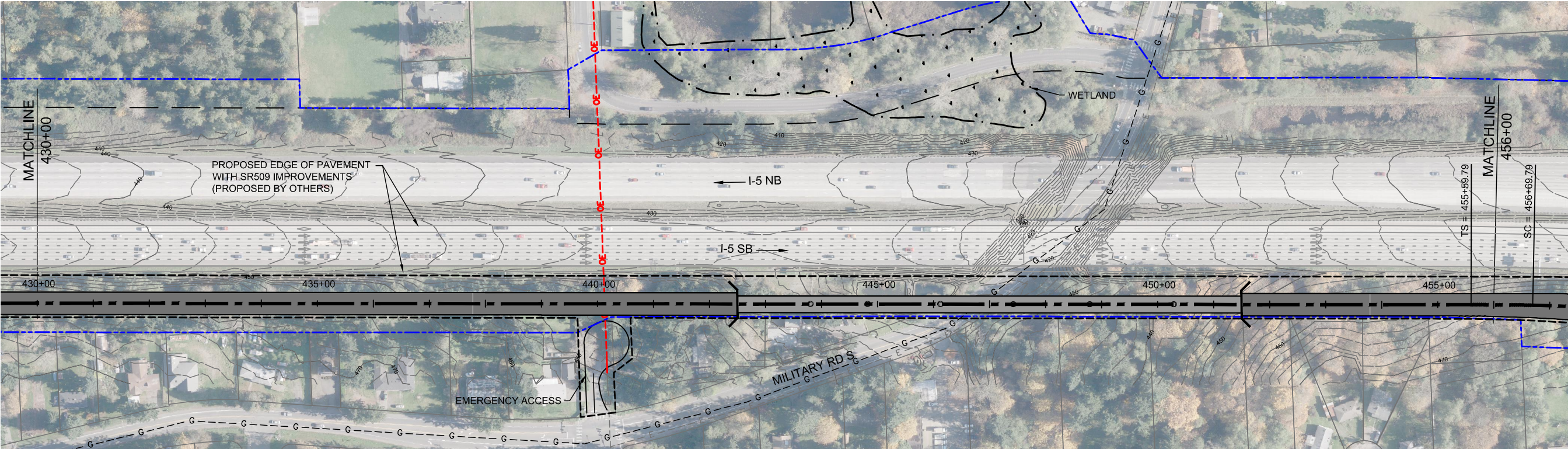


DRAFT EIS - CONCEPTUAL DESIGN
TRACK PLAN & PROFILE AND ROADWAY RECONSTRUCTION
I-5 ALTERNATIVE
STA 404+00 TO STA 430+00

APRIL 2015

I5-A13-PP13
109

SOUND TRANSIT FEDERAL WAY LINK EXTENSION

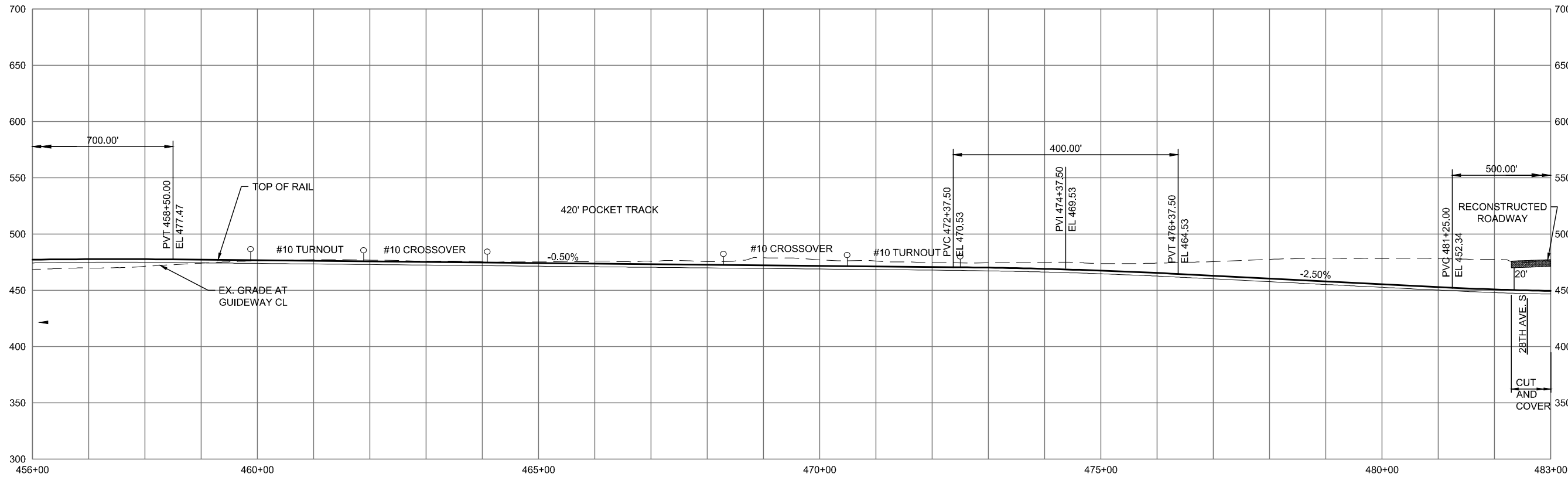
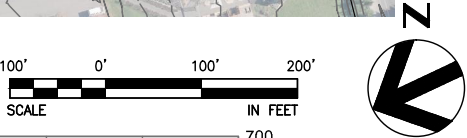
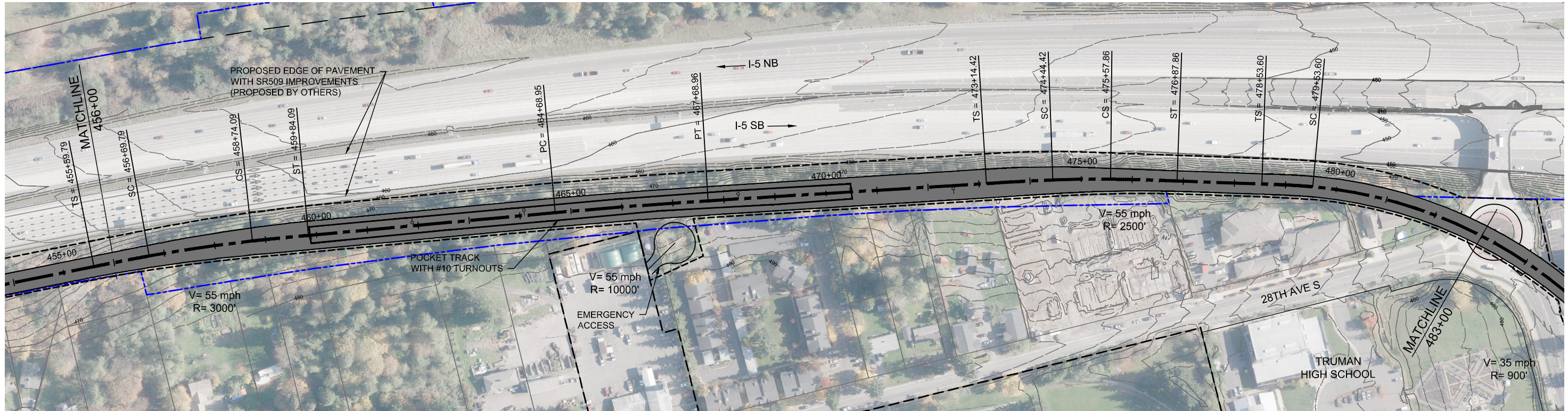


DRAFT EIS - CONCEPTUAL DESIGN
TRACK PLAN & PROFILE AND ROADWAY RECONSTRUCTION
I-5 ALTERNATIVE
STA 430+00 TO STA 456+00

APRIL 2015

I5-A14-PP14
110

SOUND TRANSIT FEDERAL WAY LINK EXTENSION



2/25/2015 12:32:38 PM
C:\WORKING\SEAD\07842A_P\FILE 15 MAINLINE.DWG

BRHARRIS

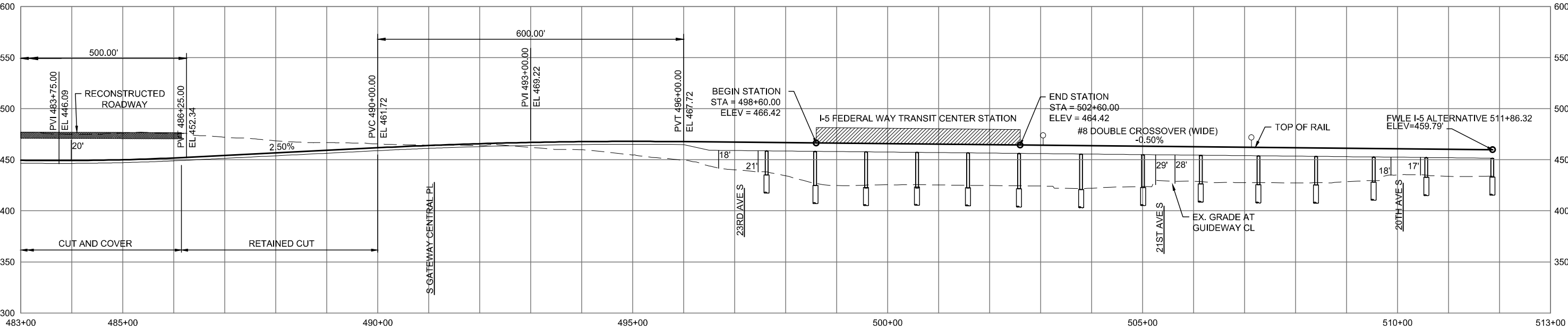
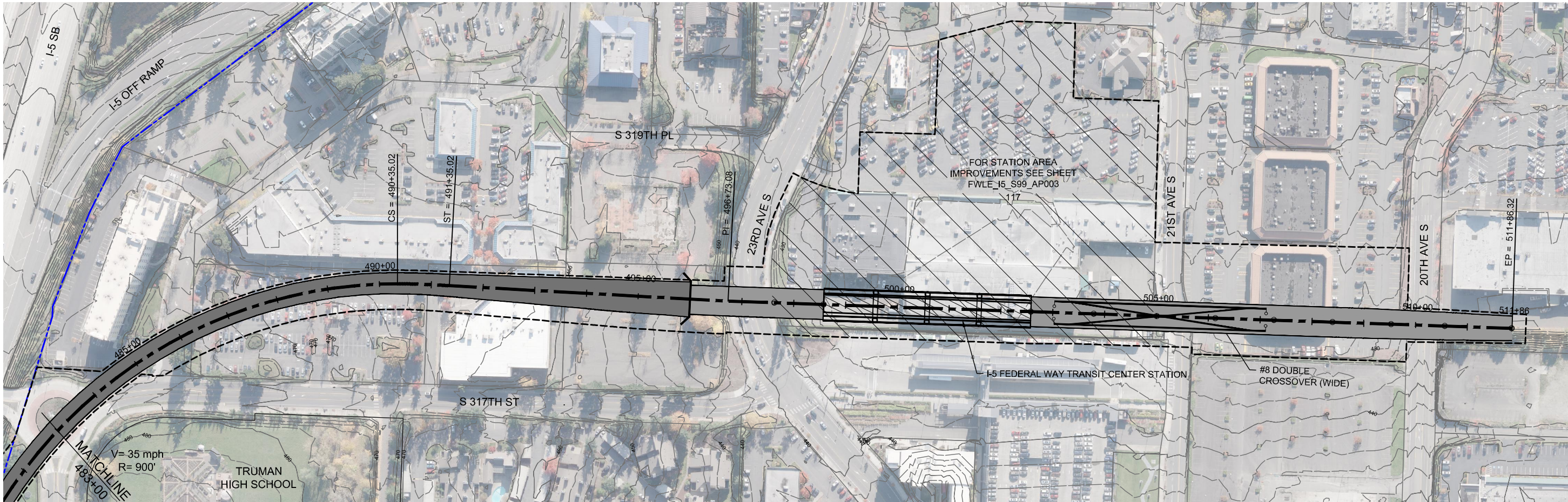


DRAFT EIS - CONCEPTUAL DESIGN
TRACK PLAN & PROFILE AND ROADWAY RECONSTRUCTION
I-5 ALTERNATIVE
STA 456+00 TO STA 483+00

APRIL 2015

I5-A15-PP15
111

SOUND TRANSIT FEDERAL WAY LINK EXTENSION



2/25/2015 12:32:48 PM
C:\WORKING\SEAD\07842A_FWLE_I5_MAINLINE.DWG



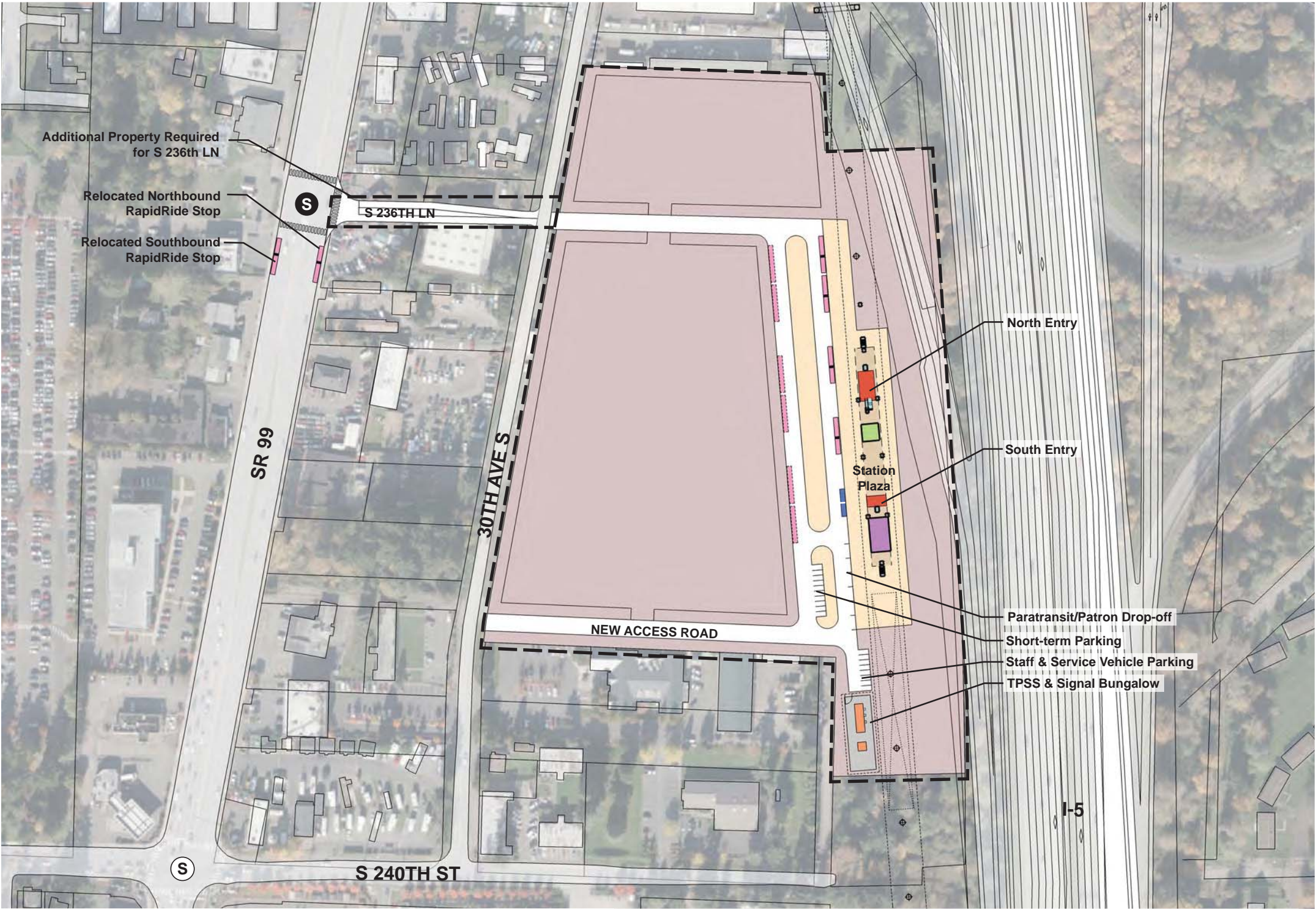
DRAFT EIS - CONCEPTUAL DESIGN
TRACK PLAN & PROFILE AND ROADWAY RECONSTRUCTION
I-5 ALTERNATIVE
STA 483+00 TO STA 511+86

APRIL 2015

I5-A17-PP16
112

SOUND TRANSIT FEDERAL WAY LINK EXTENSION

7/17/2014 11:36:52 AM JHAMMERQUIST G:\BWH PROJECTS\67612 FEDERAL WAY TRANSIT EXTENSION\2 CLIENT\2 DATA\INCOMING HDR\40717 UPDATED TITLEBLOCK.DWG



- STATION PLAZA

VERTICAL CIRCULATION

TICKETING / ENTRY HALL

PLATFORM

ANCILLARY SPACES

TPSS
- BUS LAYOVER

BUS PICK-UP / DROP OFF

PARATRANSIT

BICYCLE STORAGE

CONSTRUCTION STAGING / PARKING

- STATION AREA FOOTPRINT

S

SIGNALIZED INTERSECTION (EXISTING)

S

SIGNALIZED INTERSECTION (PROPOSED)

ASSUMPTIONS:

Kent/Des Moines I-5 Station	
Alternative(s)	I-5
Boardings	2,000
Boardings (interim terminus)	3,000
Station Configuration	
Terminus / In-Line	Interim Terminus
Station Type	Center Platform - Elevated
Platform Width	34'
Tail track	900'
Crossover	Yes
TPSS	Yes
Program	
KC Metro Ancillary Spaces (SF)	200
ST Ancillary Spaces (SF)	1,800
Total Ancillary Spaces (SF)	2,000
Vertical Circulation	
# of entrances	2
# of escalators	1
# of staircases (patron)	1
# of elevators	2
# of emergency stairs	2
Bus/ Paratransit Facilities	
Bus bays (KCM)	2 bays, one 60' coach each
Bus bays (ST)	1 bay, two 60' coaches
Rapid Ride	On-street at SR 99
Bus layover (KCM)	2 bays, two 60' coaches each
Bus layover (ST)	1 bay, two 60' coaches
Paratransit spaces	1 permanent, 1 interim
Communications Facility	Tier 2
Parking & Amenities	
Bike storage	900 SF
Patron drop-off	6 spaces
Short-term patron parking	7 to 10 spaces
Staff parking	4 spaces
Service/emerg. vehicle park.	2 spaces, separate lot
Signal bungalow / TPSS park.	2 spaces, dedicated
Long-term patron parking	500 spaces (structure)
Temporary patron parking*	500 spaces (surface)
Total proposed patron parking*	1000 Spaces

*Only required for interim terminus condition

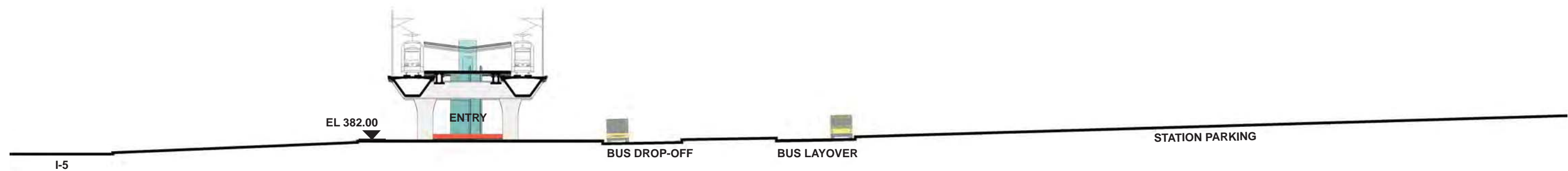


DRAFT EIS - CONCEPTUAL DESIGN
KENT/DES MOINES I-5 STATION
SITE PLAN

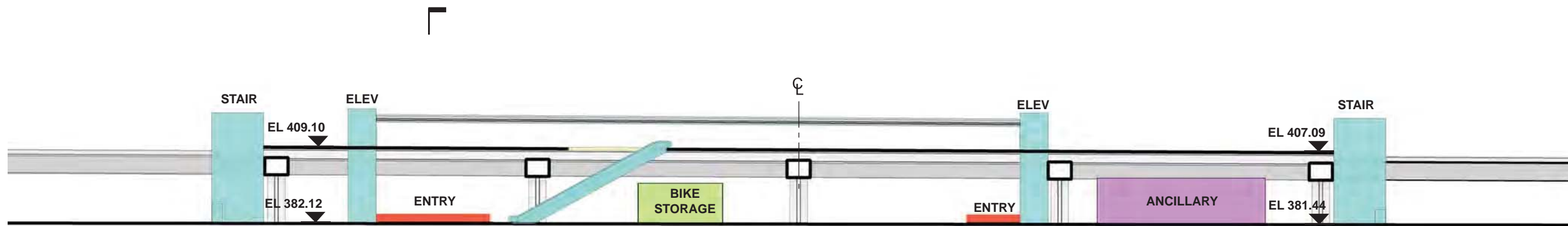
APRIL 2015

FWLE_I5_AP001
113

SOUND TRANSIT FEDERAL WAY LINK EXTENSION

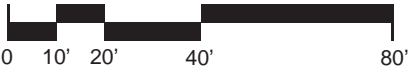


SECTION LOOKING SOUTH



SECTION LOOKING EAST

- | | |
|------------------------|--------------------------------|
| STATION PLAZA | BUS LAYOVER |
| VERTICAL CIRCULATION | BUS PICK-UP / DROP OFF |
| TICKETING / ENTRY HALL | PARATRANSIT |
| PLATFORM | BICYCLE STORAGE |
| ANCILLARY SPACES | CONSTRUCTION STAGING / PARKING |
| TPSS | |



7/17/2014 11:26:52 AM JHAMMERQUIST G:\BWA\PROJECTS\67612\FEDERAL WAY TRANSIT EXTENSION\2 CLIENT\2 DATA\INCOMING HDR\40717 UPDATED TITLEBLOCK.DWG



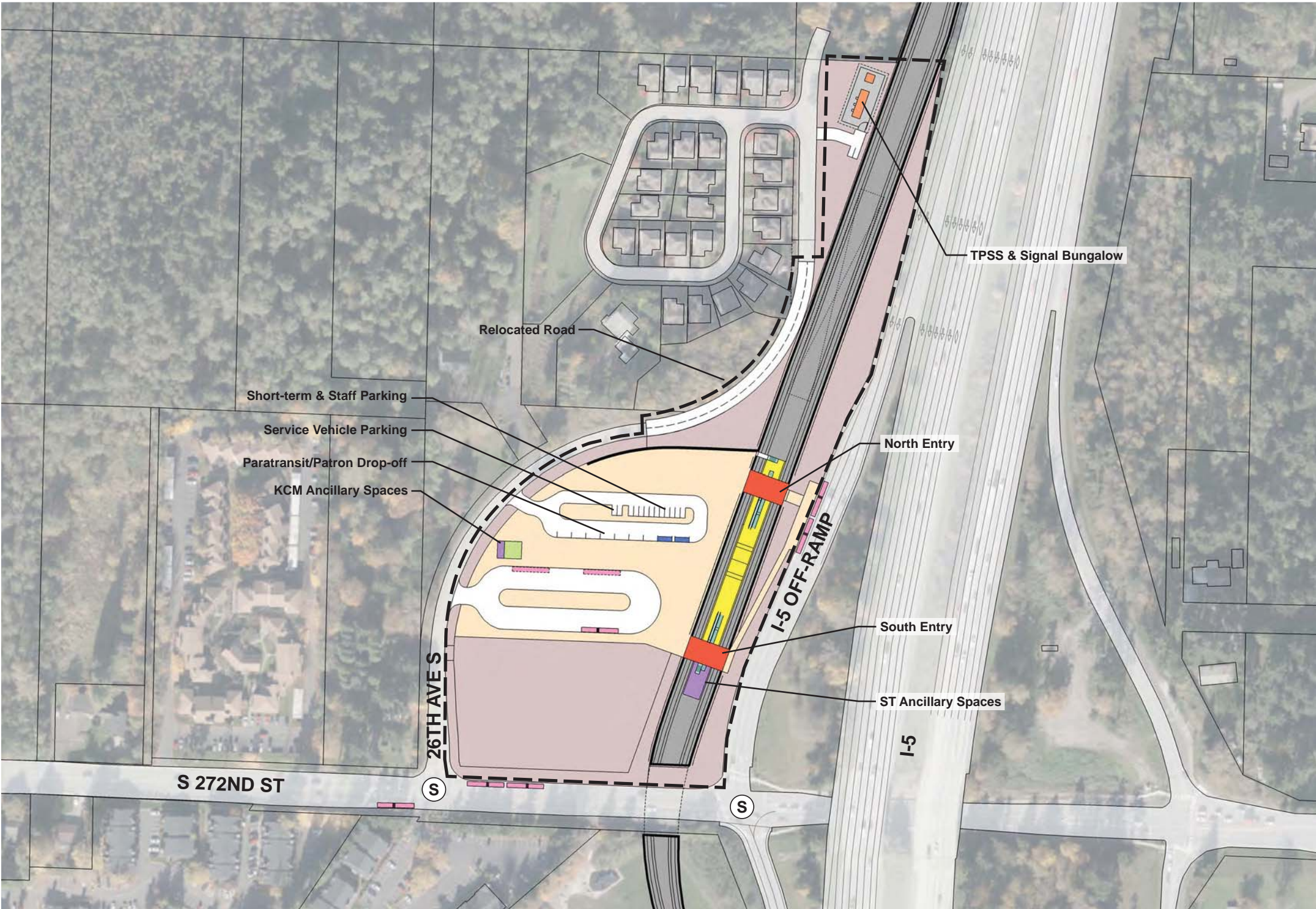
DRAFT EIS - CONCEPTUAL DESIGN
KENT/DES MOINES I-5 STATION
SECTIONS

APRIL 2015

FWLE_I5_AX001
114

SOUND TRANSIT FEDERAL WAY LINK EXTENSION

7/17/2014 11:36:52 AM JHAMMERQUIST G:\BWA PROJECTS\67612 FEDERAL WAY TRANSIT EXTENSION\2 CLIENT\2 DATA\INCOMING HDR\40717 UPDATED TITLEBLOCK\DES_TTLB\K.DWG



- STATION PLAZA

VERTICAL CIRCULATION

TICKETING / ENTRY HALL

PLATFORM

ANCILLARY SPACES

TPSS
- BUS LAYOVER

BUS PICK-UP / DROP OFF

PARATRANSIT

BICYCLE STORAGE

CONSTRUCTION STAGING / PARKING
- S

SIGNALIZED INTERSECTION (EXISTING)

S

SIGNALIZED INTERSECTION (PROPOSED)

ASSUMPTIONS:

S 272nd Star Lake Station	
Alternative(s)	I-5
Boardings	2,000
Boardings (interim terminus)	4,000
Station Configuration	
Terminus / In-Line	Interim Terminus
Station Type	Center Platform - Trench
Platform Width	34'
Tail track	900'
Crossover	Yes
TPSS	Yes
Program	
KC Metro Ancillary Spaces (SF)	200
ST Ancillary Spaces (SF)	1,800
Total Ancillary Spaces (SF)	2,000
Vertical Circulation	
# of entrances	2
# of escalators	2
# of staircases (patron)	2
# of elevators	2
# of emergency stairs	2
Bus/ Paratransit Facilities	
Bus bays (KCM)	1 bay, one 60' coach. Maintain existing bays at I-5 offramp and S 272nd Street.
Bus bays (ST)	N/A
Rapid Ride	N/A
Bus layover (KCM)	2 bays, one 60' coach each
Bus layover (ST)	N/A
Paratransit	1 permanent, 1 interim
Communications Facility	Tier 2
Parking & Amenities	
Bike storage	900 SF
Patron drop-off	6 spaces
Short-term patron parking	7 to 10 spaces
Staff parking	4 spaces, share w/short trm
Service/emerg. vehicle park.	2 spaces, separate lot
Signal bungalow / TPSS park.	2 spaces, dedicated
Existing patron parking	540 spaces
Additional patron parking	700 spaces
Total proposed patron parking	1240 spaces (structure)

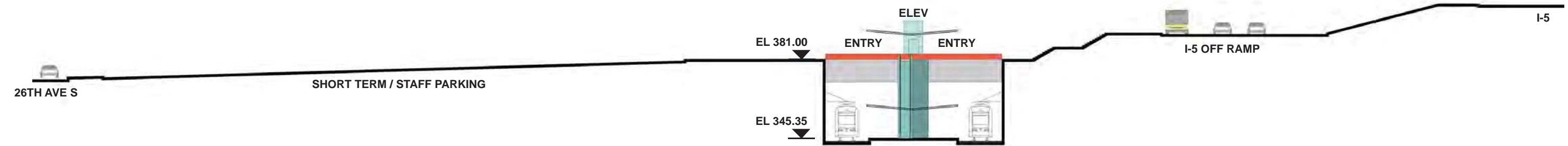


DRAFT EIS - CONCEPTUAL DESIGN
S 272ND STAR LAKE STATION
SITE PLAN

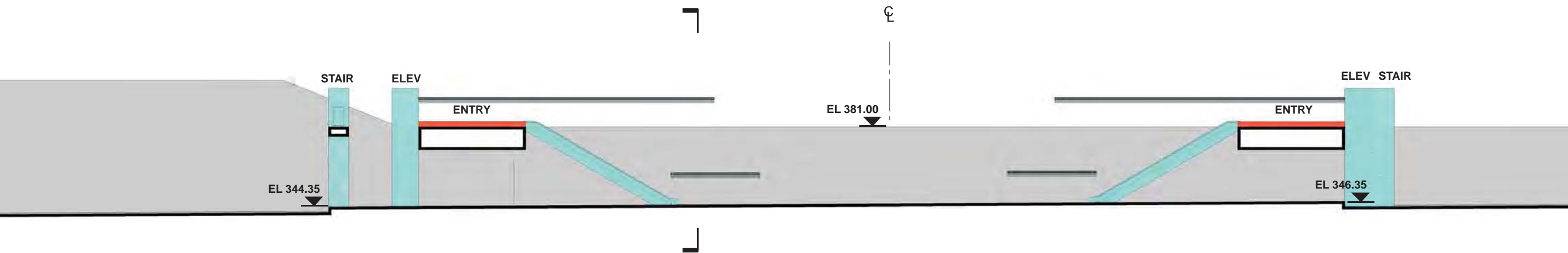
APRIL 2015

FWLE_I-5_AP002
115








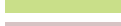



SOUND TRANSIT FEDERAL WAY LINK EXTENSION

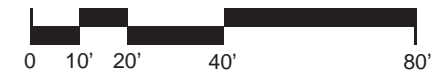


SECTION LOOKING NORTH



SECTION LOOKING EAST

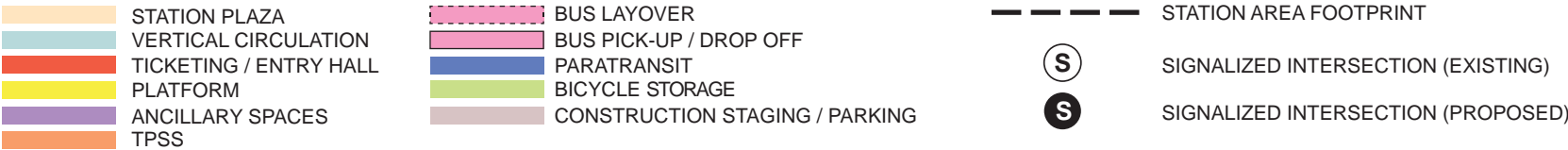
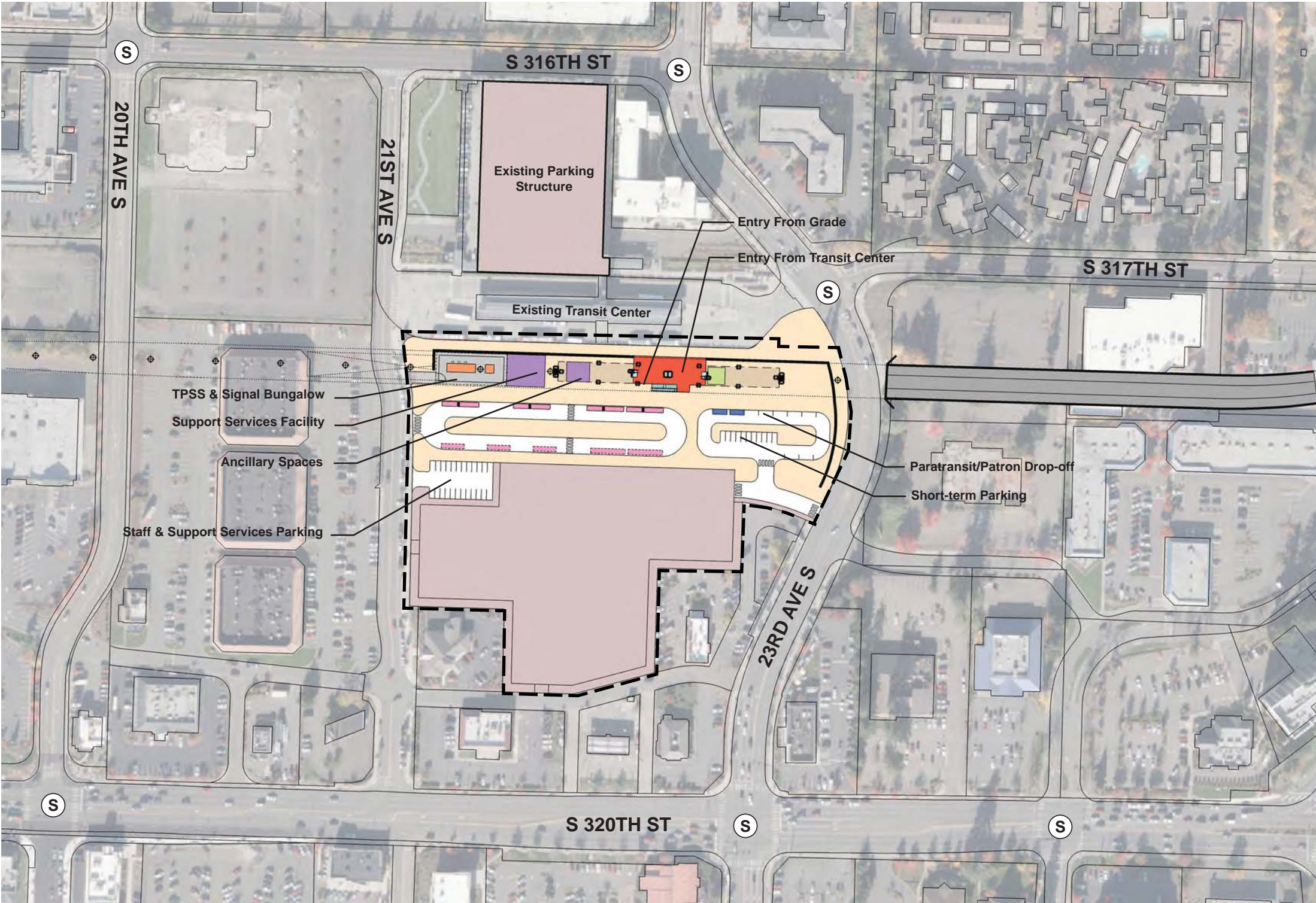
- | | |
|--|--|
|  STATION PLAZA |  BUS LAYOVER |
|  VERTICAL CIRCULATION |  BUS PICK-UP / DROP OFF |
|  TICKETING / ENTRY HALL |  PARATRANSIT |
|  PLATFORM |  BICYCLE STORAGE |
|  ANCILLARY SPACES |  CONSTRUCTION STAGING / PARKING |
|  TPSS | |



DRAFT EIS - CONCEPTUAL DESIGN
S 272ND STAR LAKE STATION
SECTIONS

APRIL 2015
FWLE_I-5_AX002
116

SOUND TRANSIT FEDERAL WAY LINK EXTENSION

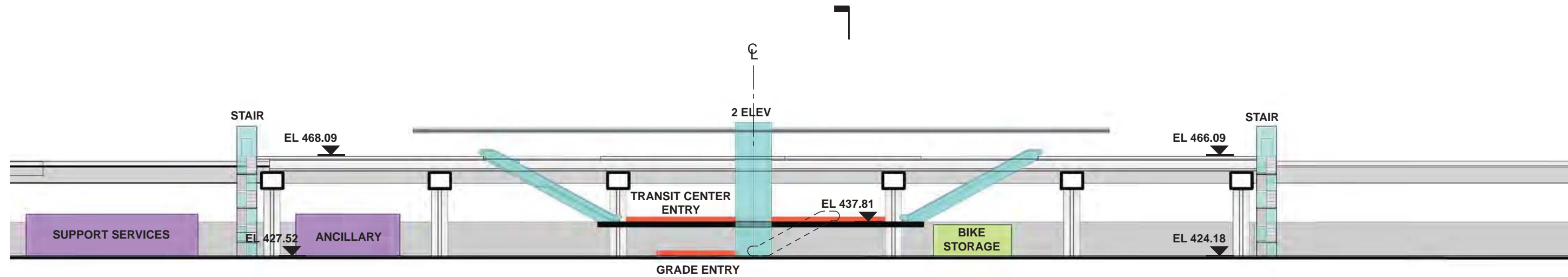
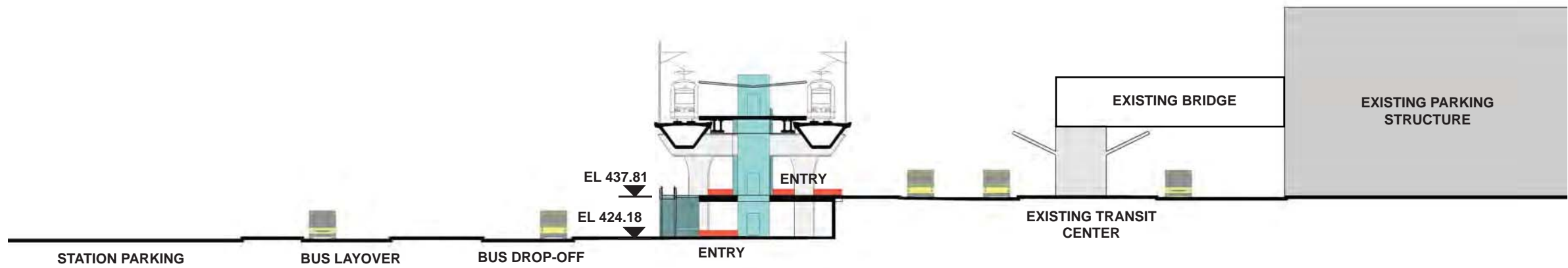


ASSUMPTIONS:

Federal Way Transit Center Station	
Alternative(s)	I-5; SR 99 to I-5
Boardings	9,000
Station Configuration	
Terminus / In-Line	Terminus
Station Type	Center Platform - Elevated
Platform Width	34'
Tail track	900'
Crossover	Yes
TPSS	Yes
Program	
KC Metro Ancillary Spaces (SF)	200
ST Ancillary Spaces (SF)	1,800
Support Services (SF)	5,000
Total Ancillary Spaces (SF)	7,000
Vertical Circulation	
# of entrances	2
# of escalators	3
# of staircases (patron)	3
# of elevators	2
# of emergency stairs	2
Bus/ Paratransit Facilities	
Bus bays (KCM)	2 bays, one 60' coach each
Bus bays (ST)	1 bay, two 60' coaches
Rapid Ride	Transit Island (Existing)
Bus layover (KCM)	3 bays, one 40' coach each 5 bays, one 60' coach each (relocated from transit ctr.)
Bus layover (ST)	1 bay, two 60' coaches
Paratransit spaces	2 spaces
Communications Facility	Tier 3
Parking & Amenities	
Bike storage	900 SF
Patron drop-off	6 spaces
Short-term patron parking	7 to 10 spaces
Staff parking	4 spaces
Support Services parking	15 spaces
Service/emerg. vehicle park.	2 spaces, separate lot
Signal bungalow / TPSS park.	2 spaces, dedicated
Existing patron parking	1,190 spaces
Additional patron parking	400 spaces
Total proposed patron parking	1590 spaces (structure)



SOUND TRANSIT FEDERAL WAY LINK EXTENSION



- | | |
|------------------------|--------------------------------|
| STATION PLAZA | BUS LAYOVER |
| VERTICAL CIRCULATION | BUS PICK-UP / DROP OFF |
| TICKETING / ENTRY HALL | PARATRANSIT |
| PLATFORM | BICYCLE STORAGE |
| ANCILLARY SPACES | CONSTRUCTION STAGING / PARKING |
| TPSS | |

