

SOUND TRANSIT FEDERAL WAY LINK EXTENSION



I-5 SHEET LAYOUT MATRIX

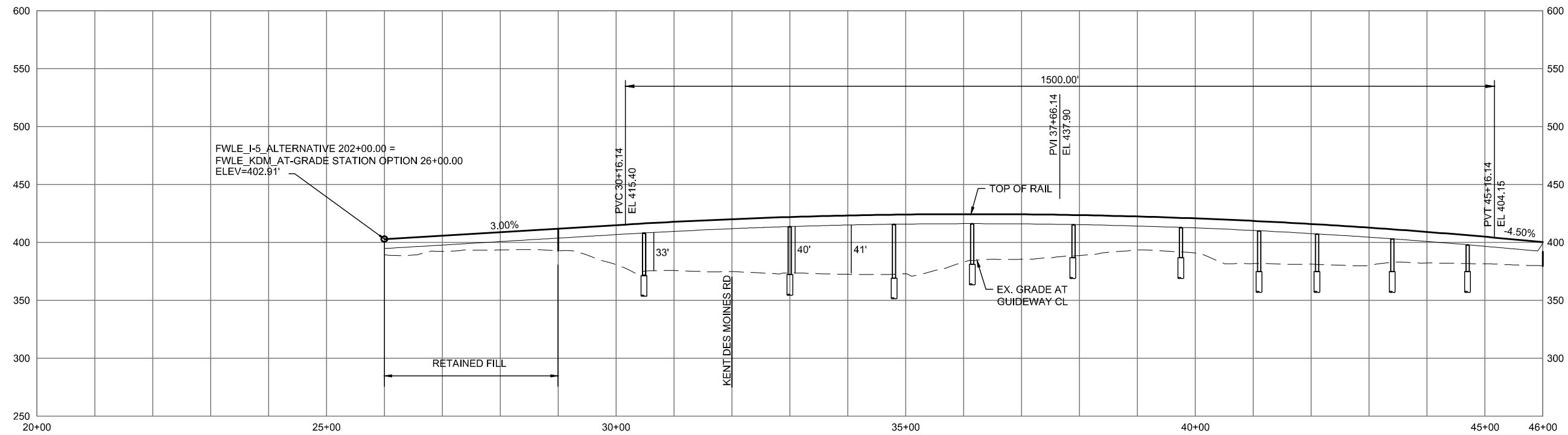
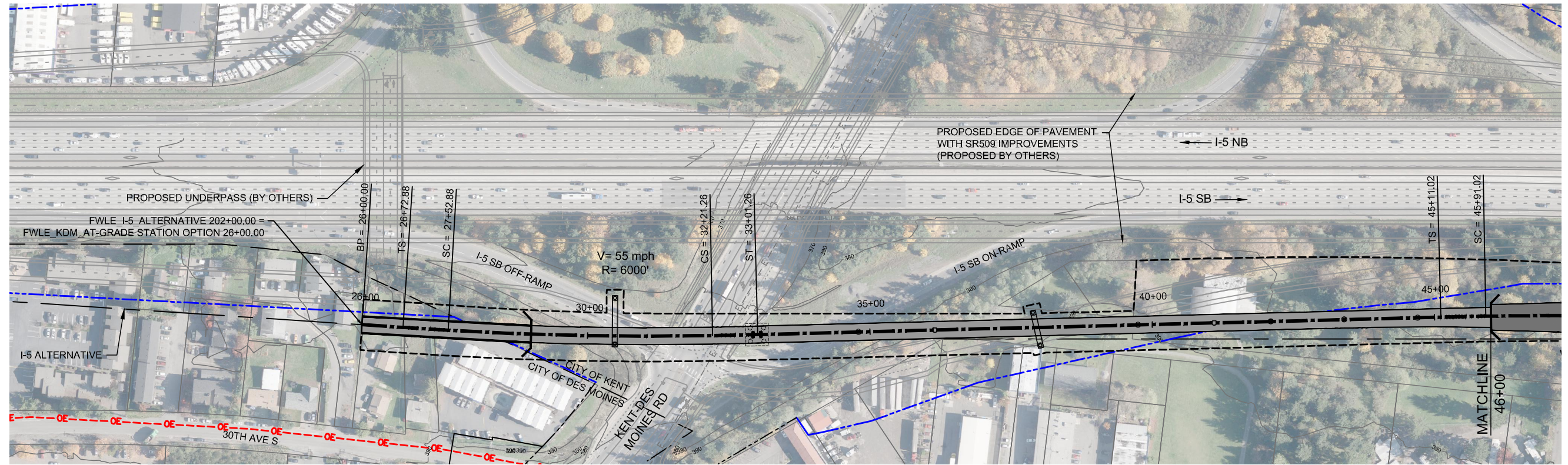
| | 1 | 2 | 3 | 4 | 5 | 6 | 7 | 8 | 9 | 10 | 11 | 12 | 13 | 14 | 15 | 16 | 17 |
|--|---|---|---|---|---|---|---|---|---|----|----|----|----|----|----|----|----|
| A - I-5 ALTERNATIVE | X | X | X | X | X | X | X | X | X | X | X | X | X | X | X | | X |
| B - KENT/DES MOINES-AT-GRADE STATION OPTION | | | | | X | X | X | | | | | | | | | | |
| C - KENT/DES MOINES SR 99 EAST STATION OPTION | | | | X | X | X | | | | | | | | | | | |
| D - LANDFILL MEDIAN ALIGNMENT OPTION | | | | | | X | X | X | | | | | | | | | |
| E - FEDERAL WAY I-5 STATION OPTION | | | | | | | | | | | | | | | | | X |
| F - I-5 FEDERAL WAY S 320TH PARK-AND-RIDE STATION OPTION | | | | | | | | | | | | | | | X | X | |



2/26/2015 12:15:16 PM C:\P\WORKING\SEAD\078401\EA\01-GX02.DWG



SOUND TRANSIT FEDERAL WAY LINK EXTENSION



2/25/2015 4:11:38 PM C:\P\WORKING\SEAD\078426 FWLE I-5_KDM AT GRADE STATION.DWG

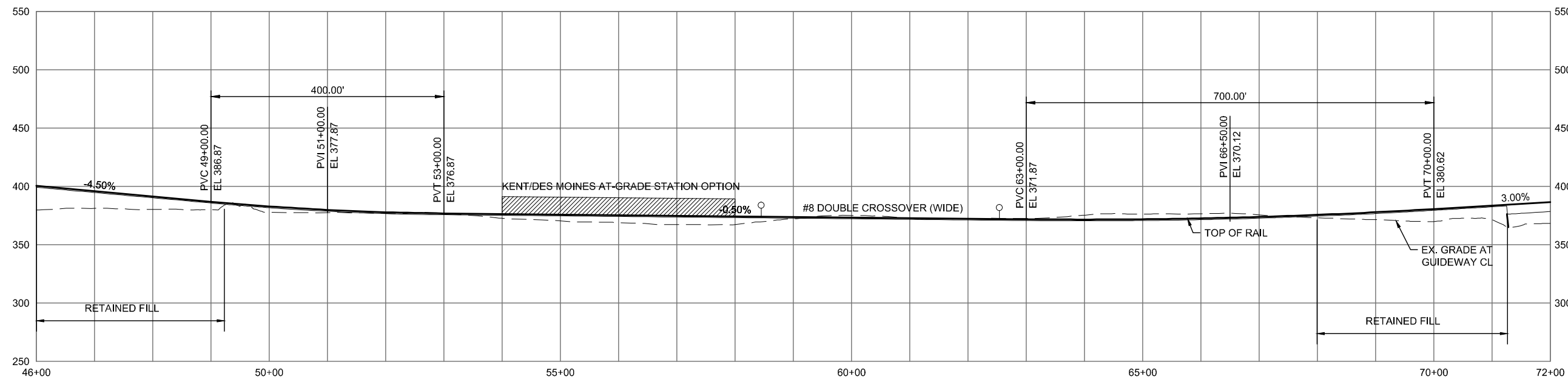
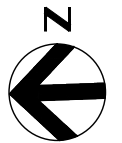
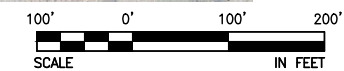
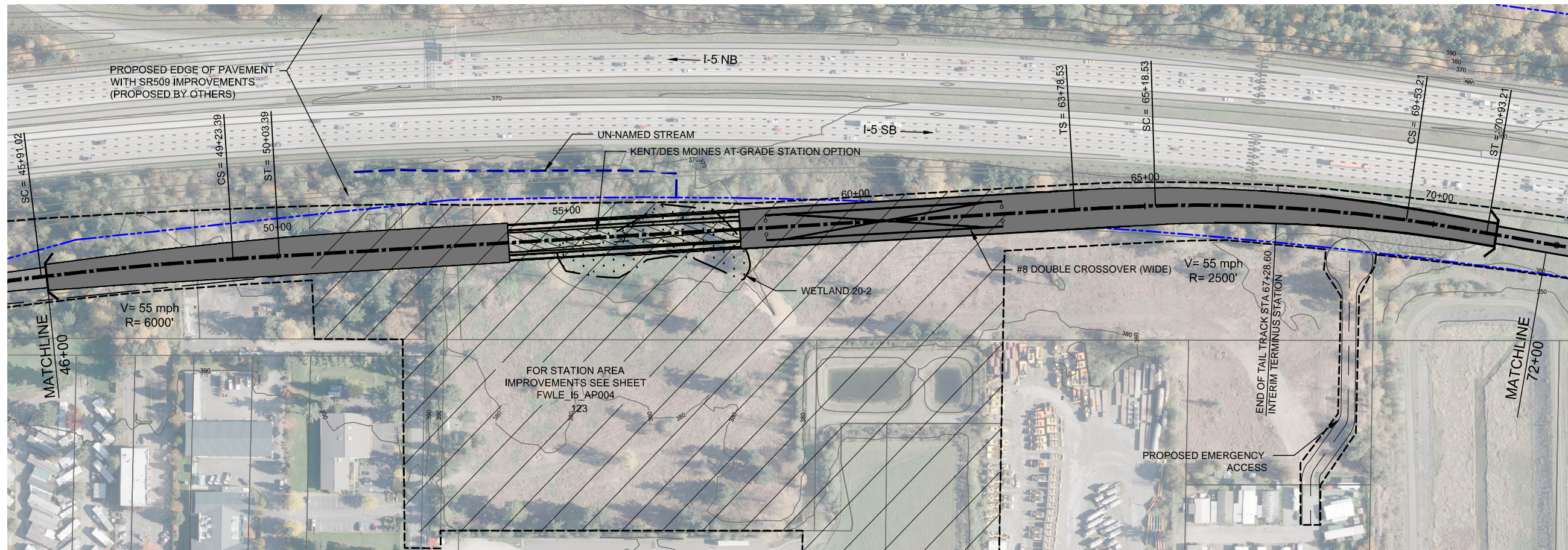


DRAFT EIS - CONCEPTUAL DESIGN
 TRACK PLAN AND PROFILE
 I-5 KENT/DES MOINES AT-GRADE STATION OPTION
 STA 26+00 TO STA 46+00

APRIL 2015

15-B1-PP05
 120

SOUND TRANSIT FEDERAL WAY LINK EXTENSION



2/25/2015 4:11:46 PM C:\P\WORKING\SEAD\078426 FWLE I-5 KOM AT GRADE STATION.DWG CPOX

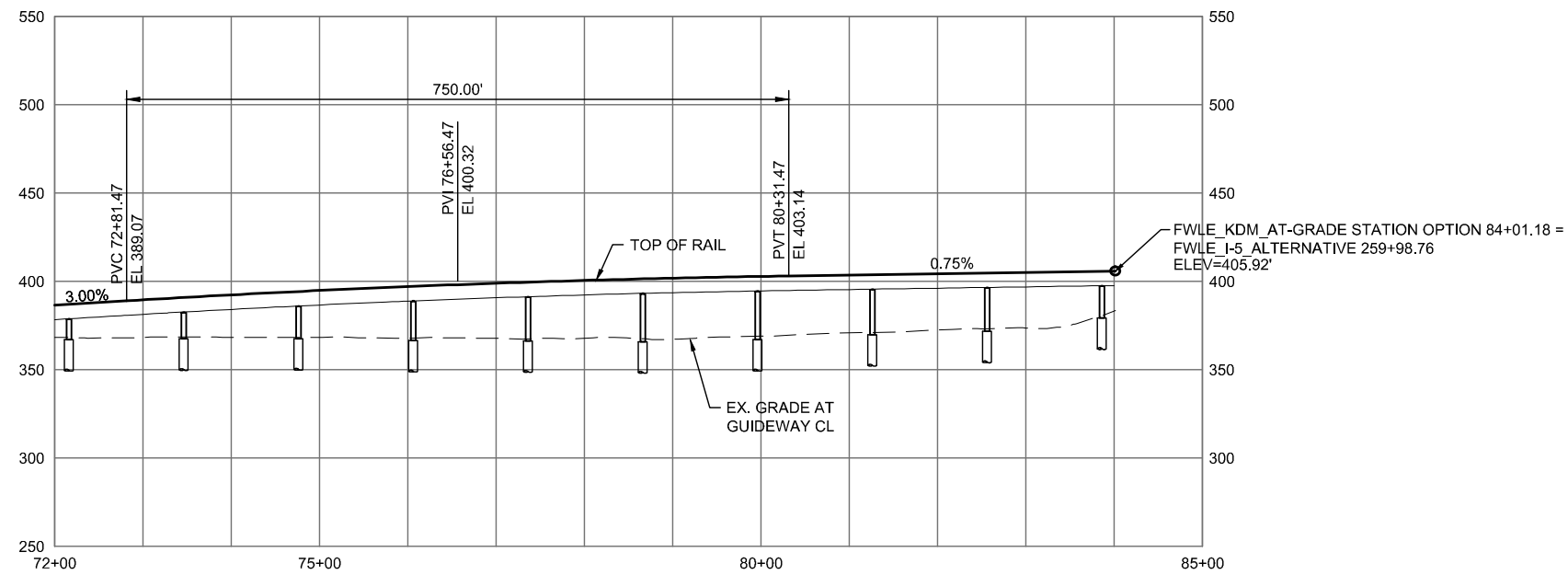
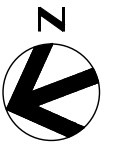
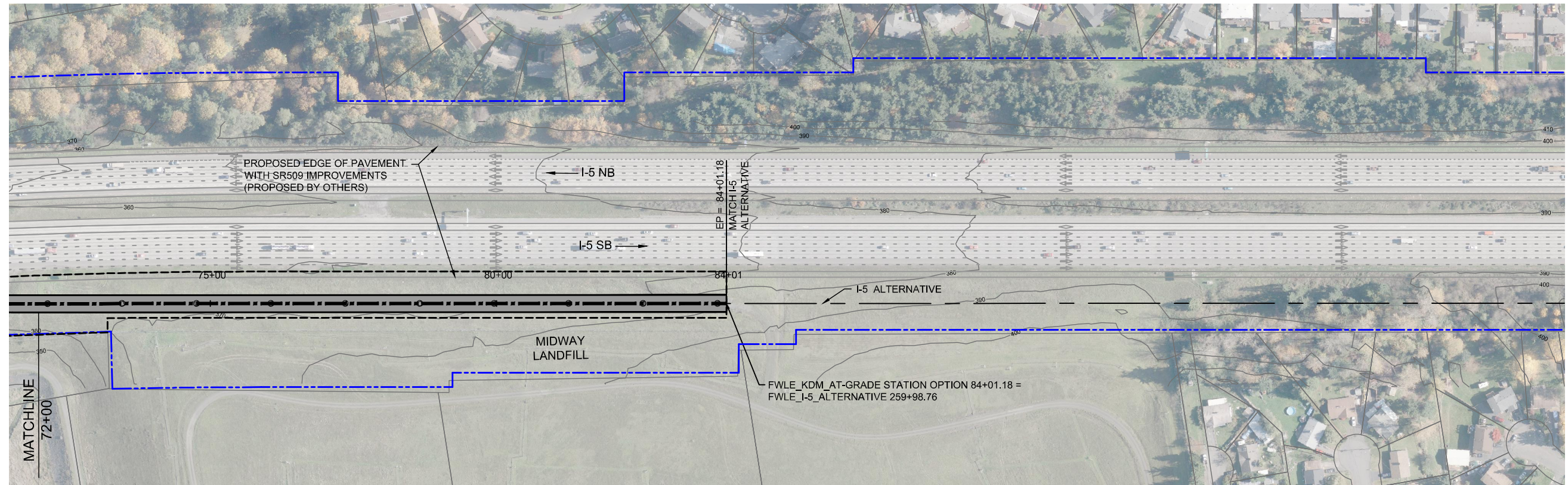


DRAFT EIS - CONCEPTUAL DESIGN
 TRACK PLAN AND PROFILE
 I-5 KENT/DES MOINES AT-GRADE STATION OPTION
 STA 46+00 TO STA 72+00

APRIL 2015

15-B2-PP06
 121

SOUND TRANSIT FEDERAL WAY LINK EXTENSION



2/25/2015 4:11:56 PM C:\P\WORKING\SEAD\078426 FWLE_I-5_KDM_AT GRADE STATION.DWG CPOX

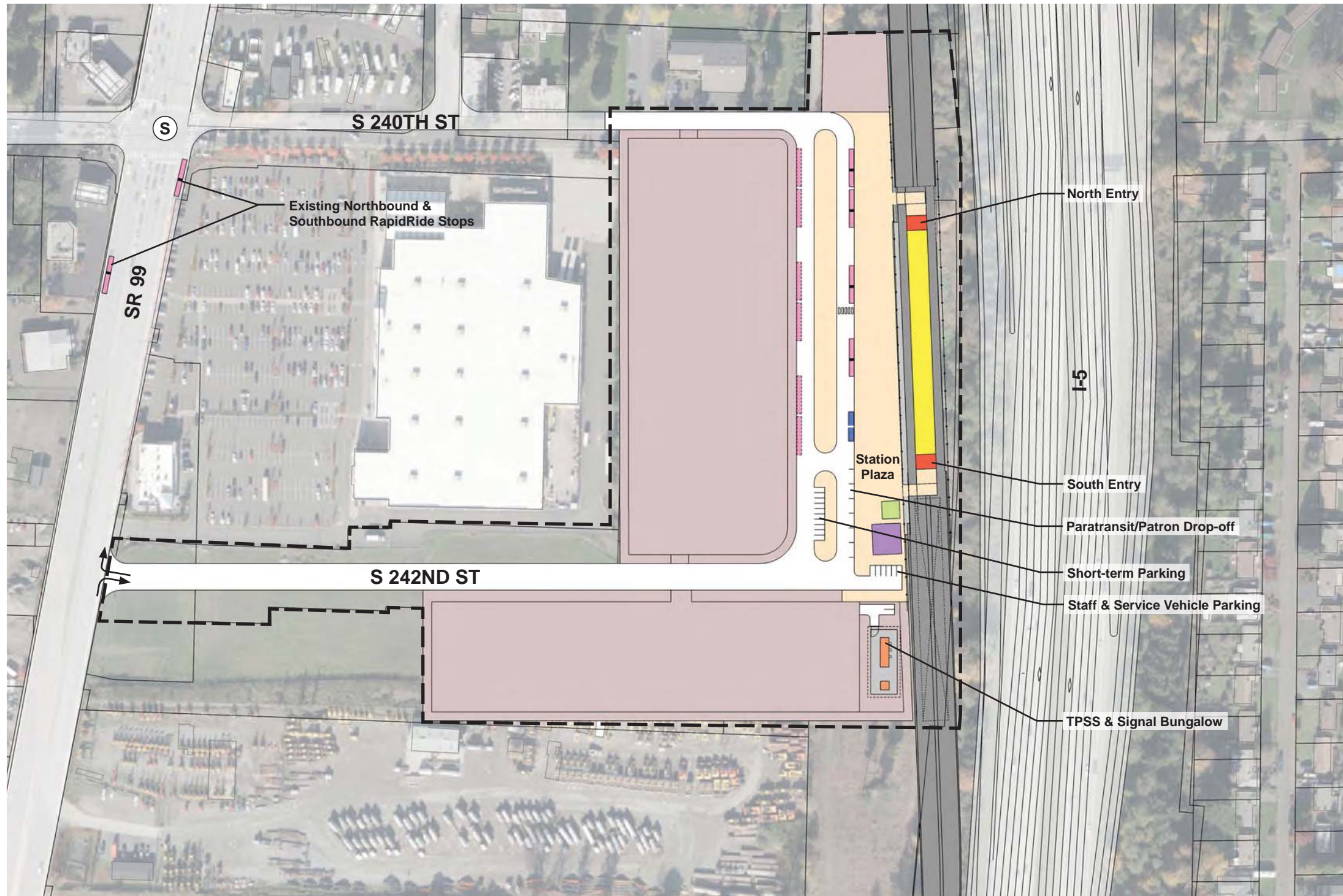


DRAFT EIS - CONCEPTUAL DESIGN
 TRACK PLAN AND PROFILE
 I-5 KENT/DES MOINES AT-GRADE STATION OPTION
 STA 72+00 TO STA 84+01.18

APRIL 2015

15-B3-PP07
 122

SOUND TRANSIT FEDERAL WAY LINK EXTENSION



- STATION PLAZA
- VERTICAL CIRCULATION
- TICKETING / ENTRY HALL
- PLATFORM
- ANCILLARY SPACES
- TPSS
- BUS LAYOVER
- BUS PICK-UP / DROP OFF
- PARATRANSIT
- BICYCLE STORAGE
- CONSTRUCTION STAGING / PARKING
- STATION AREA FOOTPRINT
- S SIGNALIZED INTERSECTION (EXISTING)
- S SIGNALIZED INTERSECTION (PROPOSED)

ASSUMPTIONS:

| Kent/Des Moines At-Grade Station Option | |
|---|------------------------------|
| Alternative(s) | I-5 |
| Boardings | 2,000 |
| Boardings (interim terminus) | 3,000 |
| Station Configuration | |
| Terminus / In-Line | Interim Terminus |
| Station Type | Center Platform - At Grade |
| Platform Width | 34' |
| Tail track | 900' |
| Crossover | Yes |
| TPSS | Yes |
| Program | |
| KC Metro Ancillary Spaces (SF) | 200 |
| ST Ancillary Spaces (SF) | 1,800 |
| Total Ancillary Spaces (SF) | 2,000 |
| Vertical Circulation | |
| # of entrances | 2 |
| # of escalators | 0 |
| # of staircases (patron) | 0 |
| # of elevators | 0 |
| # of emergency stairs | 0 |
| Bus/ Paratransit Facilities | |
| Bus bays (KCM) | 2 bays, one 60' coach each |
| Bus bays (ST) | 1 bay, two 60' coaches |
| Rapid Ride | On-street at SR 99 |
| Bus layover (KCM) | 2 bays, two 60' coaches each |
| Bus layover (ST) | 1 bay, two 60' coaches |
| Paratransit spaces | 1 permanent, 1 interim |
| Communications Facility | Tier 2 |
| Parking & Amenities | |
| Bike storage | 900 SF |
| Patron drop-off | 6 spaces |
| Short-term patron parking | 7 to 10 spaces |
| Staff parking | 4 spaces |
| Service/emerg. vehicle park. | 2 spaces, separate lot |
| Signal bungalow / TPSS park. | 2 spaces, dedicated |
| Long-term patron parking | 500 spaces (structure) |
| Temporary patron parking* | 500 spaces (surface) |
| Total proposed patron parking* | 1000 Spaces |

*Only required for interim terminus condition



7/17/2014 11:28:52 AM JHAMMERQUIST G:\BHM\PROJECTS\67812\FEDERAL WAY TRANSIT EXTENSION\2 CLIENT\2 DATA\INCOMING-HDRV\40717\UPDATED TITLEBLOCK\DEIS_TTLBLK.DWG



DRAFT EIS - CONCEPTUAL DESIGN
 KENT/DES MOINES AT-GRADE STATION OPTION
 SITE PLAN

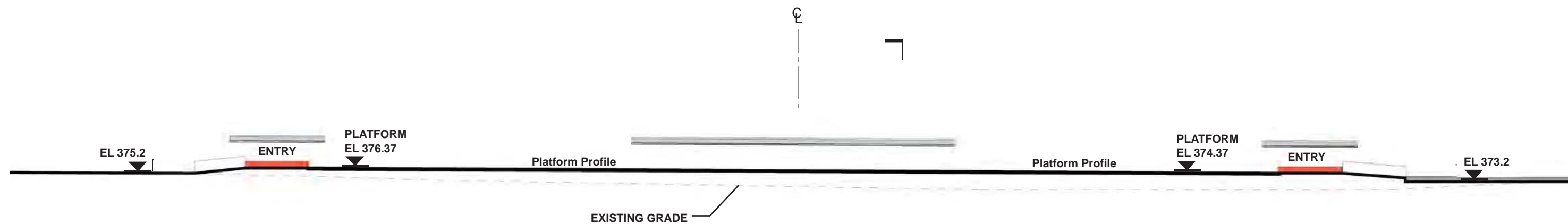
APRIL 2015

FWLE_I-5_AP004
 123








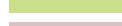


SOUND TRANSIT FEDERAL WAY LINK EXTENSION

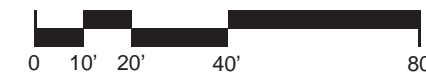


SECTION LOOKING NORTH



SECTION LOOKING EAST

- | | | | |
|---|------------------------|---|--------------------------------|
|  | STATION PLAZA |  | BUS LAYOVER |
|  | VERTICAL CIRCULATION |  | BUS PICK-UP / DROP OFF |
|  | TICKETING / ENTRY HALL |  | PARATRANSIT |
|  | PLATFORM |  | CONSTRUCTION STAGING / PARKING |
|  | ANCILLARY SPACES | | |
|  | TPSS | | |



7/17/2014 11:28:52 AM JHAMMERQUIST G:\BIM\PROJECTS\67512\FEDERAL WAY TRANSIT EXTENSION\2 CLIENT\2 DATA\INCOMING-HDRV\40717\UPDATED\TITLEBLOCK\DEIS_TTLBLK.DWG

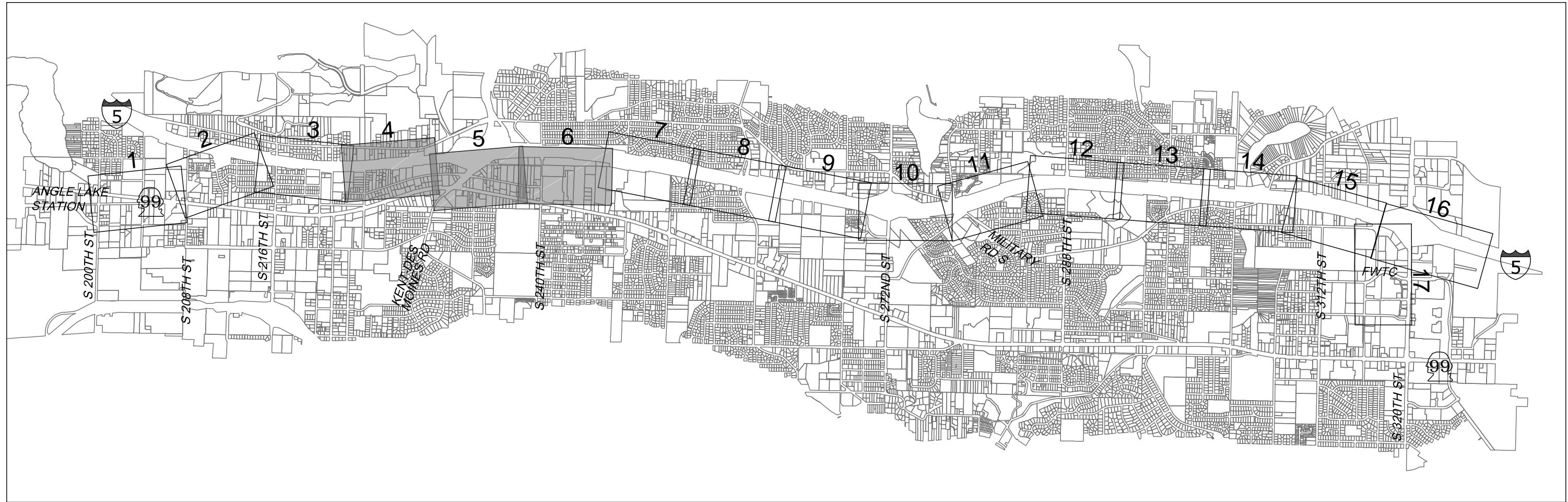


DRAFT EIS - CONCEPTUAL DESIGN
 KENT/DES MOINES AT-GRADE STATION OPTION
 SECTIONS

APRIL 2015

FWLE_I-5_AX004
 124

SOUND TRANSIT FEDERAL WAY LINK EXTENSION



I-5 SHEET LAYOUT MATRIX

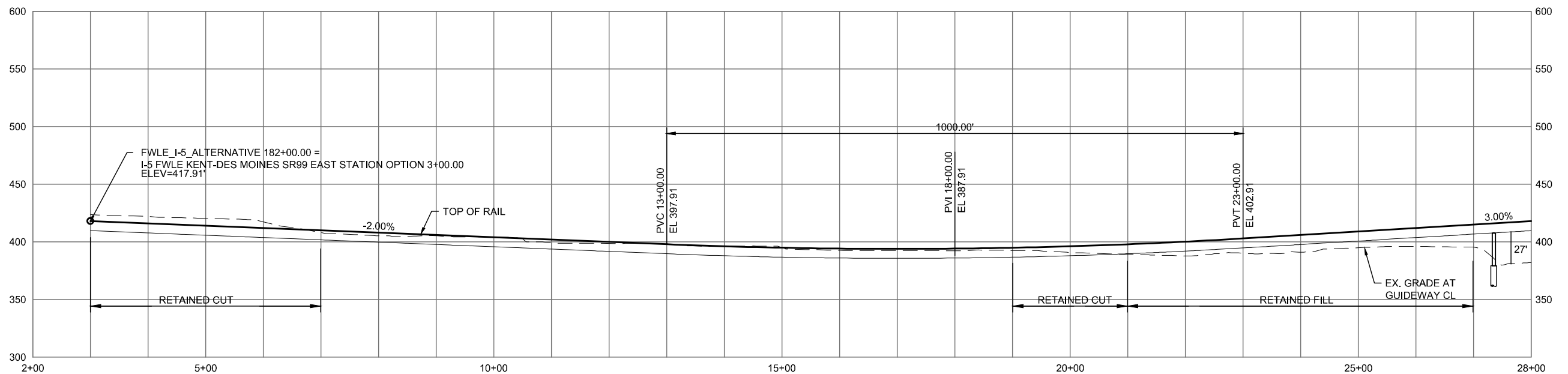
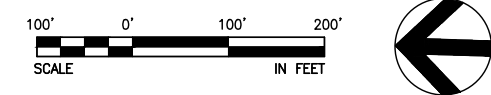
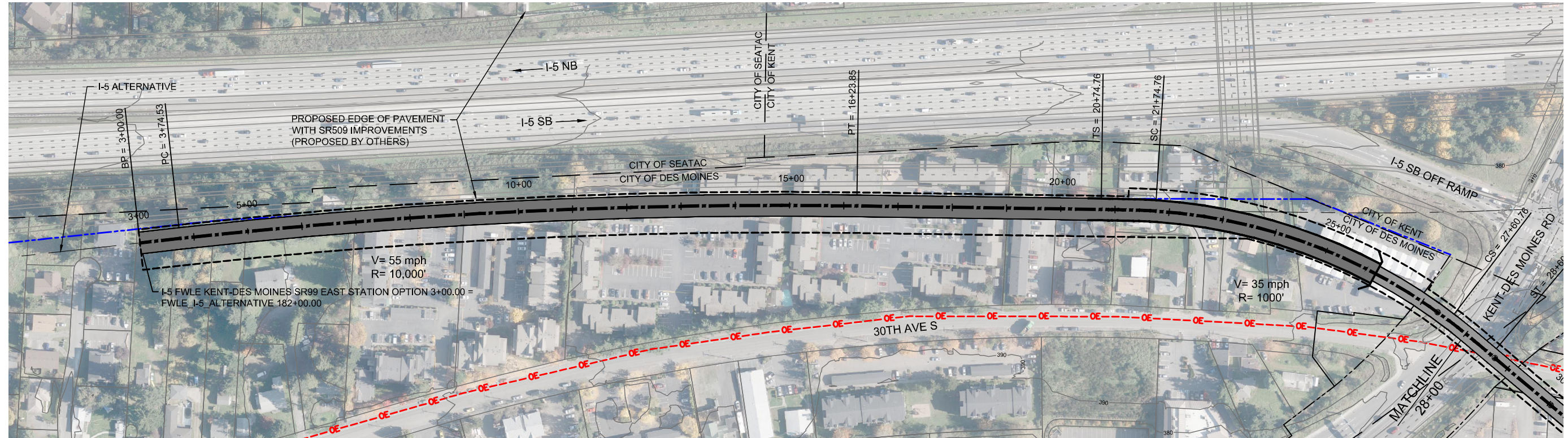
| | 1 | 2 | 3 | 4 | 5 | 6 | 7 | 8 | 9 | 10 | 11 | 12 | 13 | 14 | 15 | 16 | 17 |
|--|---|---|---|---|---|---|---|---|---|----|----|----|----|----|----|----|----|
| A - I-5 ALTERNATIVE | X | X | X | X | X | X | X | X | X | X | X | X | X | X | X | | X |
| B - KENT/DES MOINES-AT-GRADE STATION OPTION | | | | | X | X | X | | | | | | | | | | |
| C - KENT/DES MOINES SR 99 EAST STATION OPTION | | | | X | X | X | | | | | | | | | | | |
| D - LANDFILL MEDIAN ALIGNMENT OPTION | | | | | | X | X | X | | | | | | | | | |
| E - FEDERAL WAY I-5 STATION OPTION | | | | | | | | | | | | | | | | | X |
| F - I-5 FEDERAL WAY S 320TH PARK-AND-RIDE STATION OPTION | | | | | | | | | | | | | | | X | X | |



2/26/2015 12:15:18 PM C:\P\WORKING\SEAD\078840\EA\01\G002.DWG



SOUND TRANSIT FEDERAL WAY LINK EXTENSION



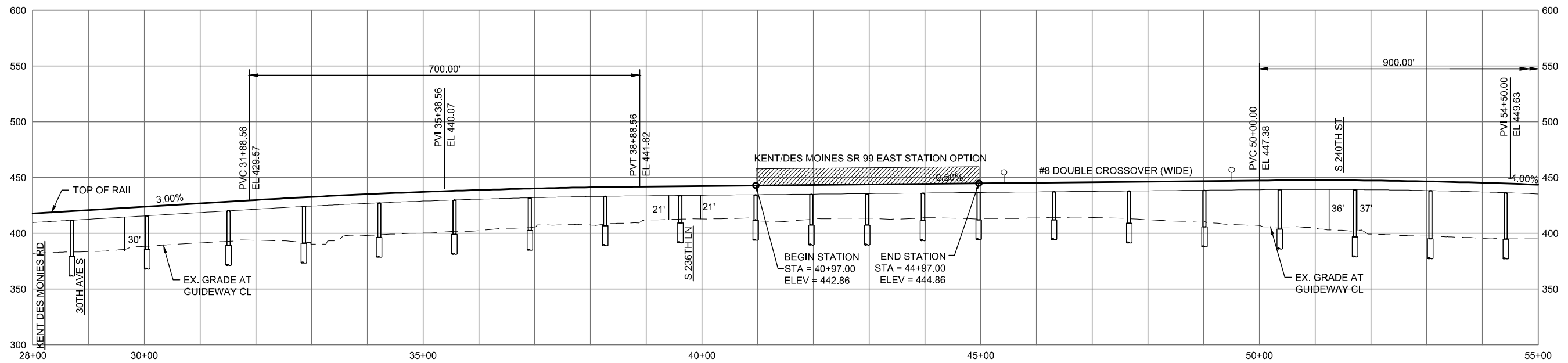
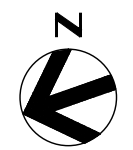
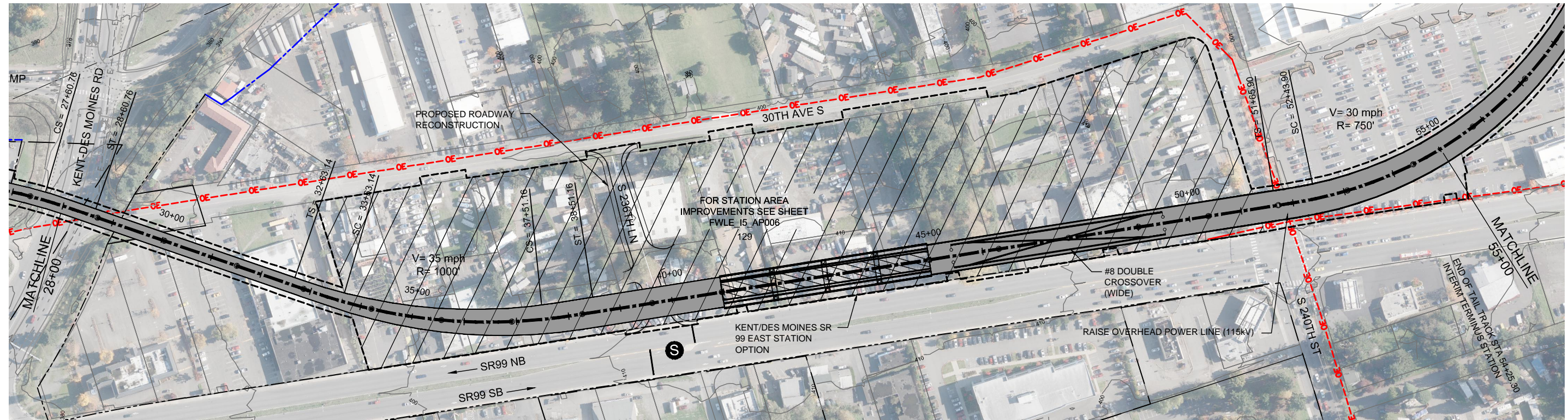
2/27/2015 12:20:14 PM C:\P\WORKING\SEAD\07842C_FWLE_I-5_KDM_SR99_EAST_STATION.DWG CPOK



DRAFT EIS - CONCEPTUAL DESIGN
 TRACK PLAN AND PROFILE
 I-5 KENT/DES MOINES SR 99 EAST STATION OPTION
 STA 3+00 TO STA 28+00

APRIL 2015
 I5-C1-PP04
 126

SOUND TRANSIT FEDERAL WAY LINK EXTENSION



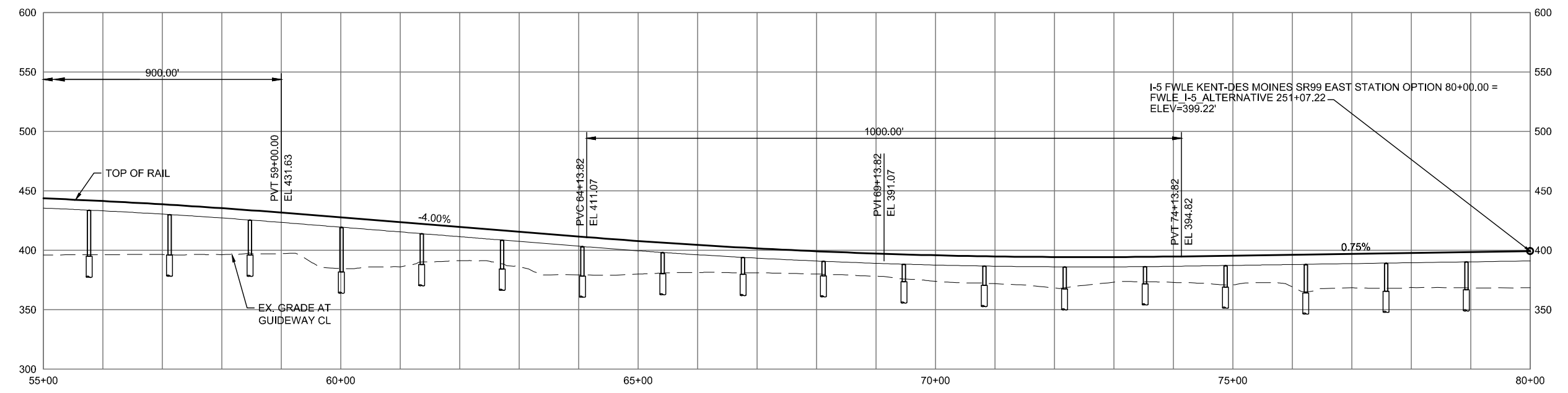
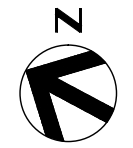
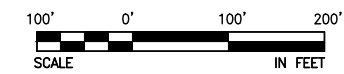
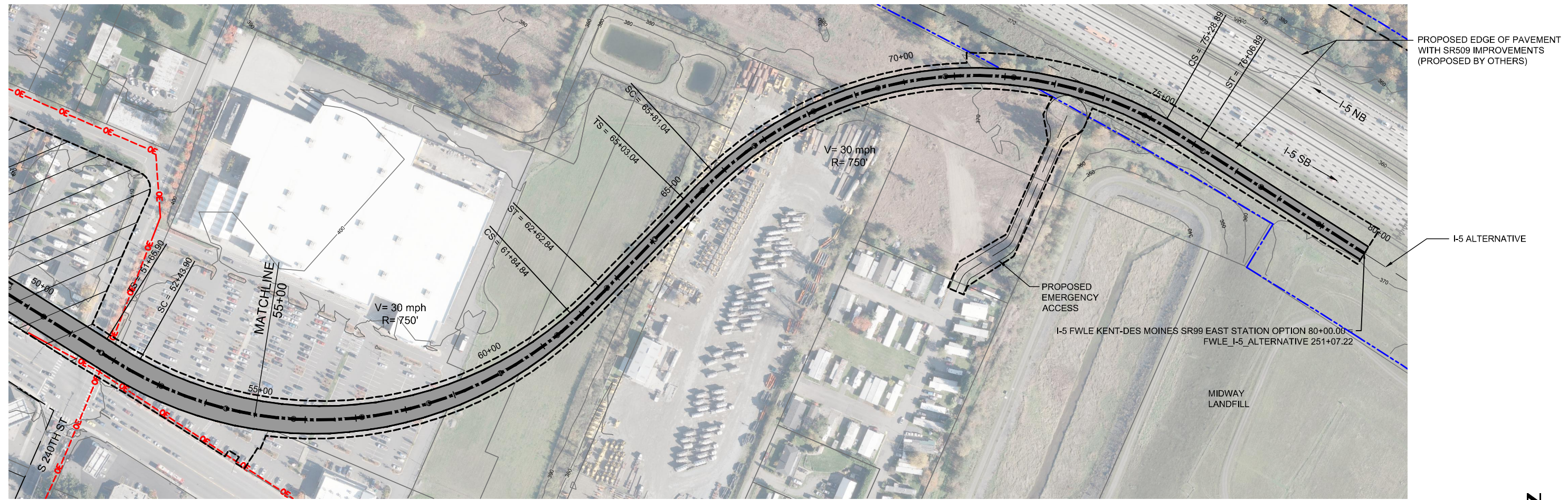
2/27/2015 12:50:23 PM C:\P\WORKING\SEAD\07842C_P\LE_I-5_KDM_SR99_EAST_STAT\DWG.CPOX



DRAFT EIS - CONCEPTUAL DESIGN
 TRACK PLAN AND PROFILE
 I-5 KENT/DES MOINES SR 99 EAST STATION OPTION
 STA 28+00 TO STA 55+00

APRIL 2015
 I5-C2-PP05
 127

SOUND TRANSIT FEDERAL WAY LINK EXTENSION



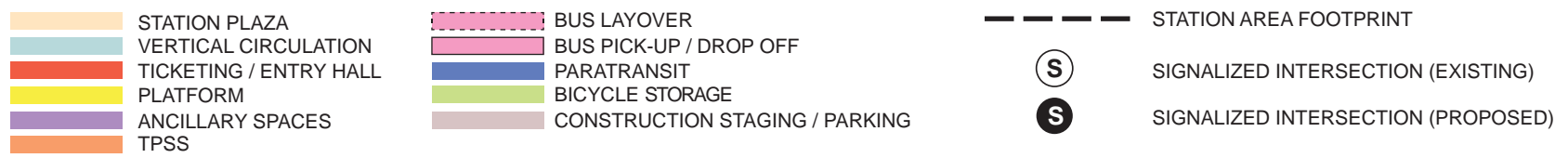
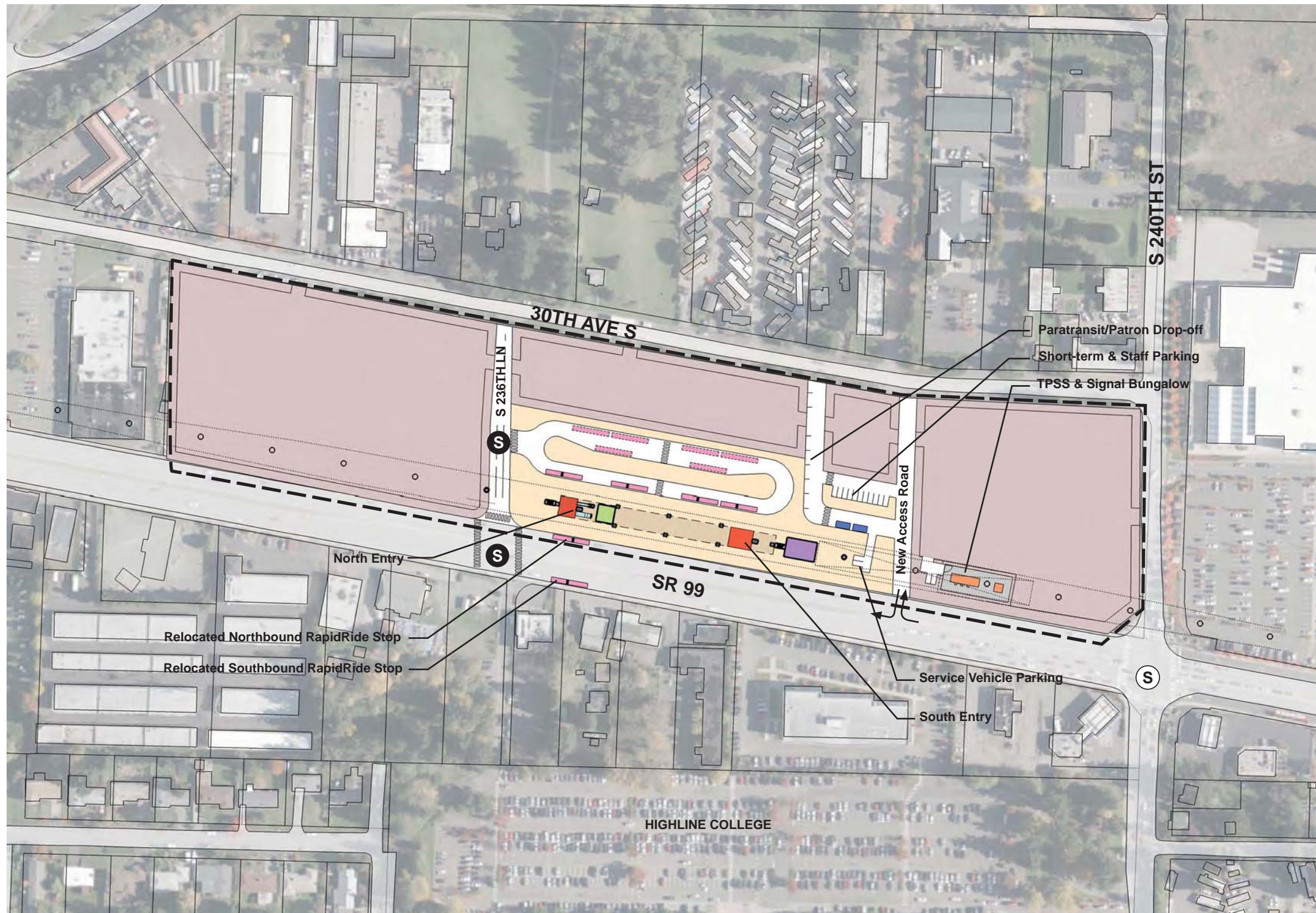
2/27/2015 12:50:33 PM C:\P\WORKING\SEAD\07842C_FWLE_I-5_KDM_SR99_EAST_STATION.DWG CFOX



DRAFT EIS - CONCEPTUAL DESIGN
 TRACK PLAN AND PROFILE
 I-5 KENT/DES MOINES SR 99 EAST STATION OPTION
 STA 55+00 TO STA 80+00

APRIL 2015
 I5-C3-PP06
 128

SOUND TRANSIT FEDERAL WAY LINK EXTENSION



ASSUMPTIONS:

| Kent/Des Moines SR 99 East Station Option | |
|---|------------------------------|
| Alternative(s): | SR 99; I-5 |
| Boardings | 3,000 |
| Boardings (with 216th Station) | 2,500 |
| Boardings (interim terminus) | 4,500 |
| Station Configuration | |
| Terminus / In-Line | Interim Terminus |
| Station Type | Center Platform - Elevated |
| Platform Width | 34' |
| Tail track | 900' |
| Crossover | Yes |
| TPSS | Yes |
| Program | |
| KC Metro Ancillary Spaces (SF) | 200 |
| ST Ancillary Spaces (SF) | 1,800 |
| Total Ancillary Spaces (SF) | 2,000 |
| Vertical Circulation | |
| # of entrances | 2 |
| # of escalators | 2 |
| # of staircases (patron) | 2 |
| # of elevators | 2 |
| # of emergency stairs | 2 |
| Bus/ Paratransit Facilities | |
| Bus bays (KCM) | 2 bays, one 60' coach each |
| Bus bays (ST) | 1 bay, two 60' coaches |
| Rapid Ride | On-street at SR 99 |
| Bus layover (KCM) | 2 bays, two 60' coaches each |
| Bus layover (ST) | 1 bay, two 60' coaches |
| Paratransit spaces | 1 permanent, 1 interim |
| Communications Facility | Tier 2 |
| Parking & Amenities | |
| Bike storage | 900 SF |
| Patron drop-off | 6 spaces |
| Short-term patron parking | 7 to 10 spaces |
| Staff parking | 4 spaces |
| Service/emerg. vehicle park. | 2 spaces, separate lot |
| Signal bungalow / TPSS park. | 2 spaces, dedicated |
| Long-term patron parking | 500 spaces (structure) |
| Temporary patron parking* | 500 spaces (surface) |
| Total proposed patron parking* | 1000 spaces |

*Only required for interim terminus condition



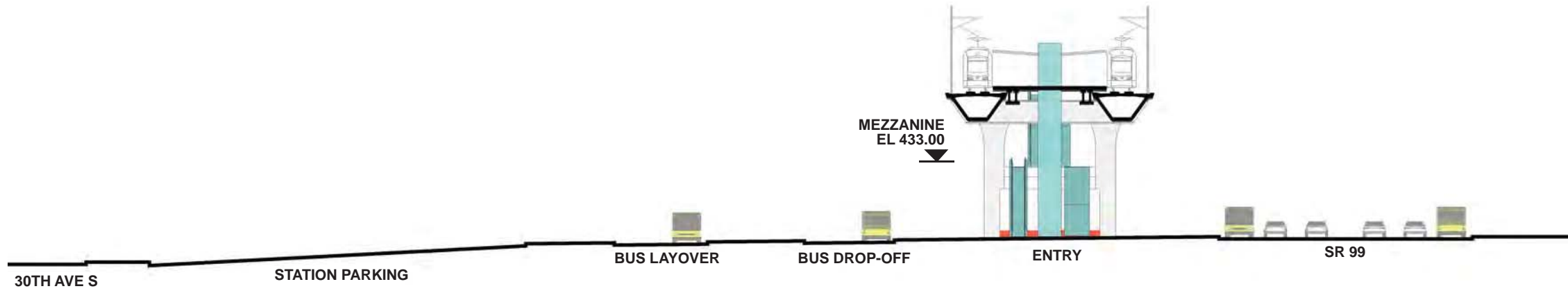
7/17/2014 11:36:52 AM JHAMMERQUIST G:\BIM\PROJECTS\67812\FEDERAL WAY TRANSIT EXTENSION\2 CLIENT\2 DATA\INCOMING-HDRV\40717\UPDATED\TITLEBLOCKDEIS_TTLB\K&D.WG



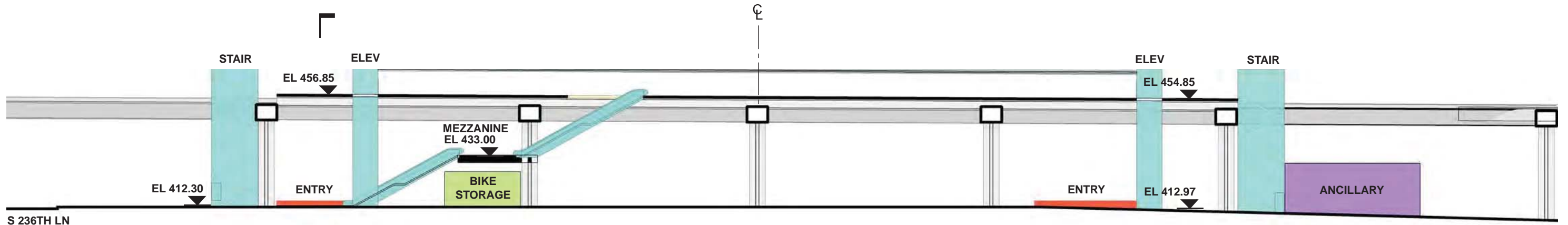
DRAFT EIS - CONCEPTUAL DESIGN
 KENT/DES MOINES SR 99 EAST STATION OPTION
 STATION SITE PLAN

APRIL 2015
 FWLE_S99_AP006
 129












SOUND TRANSIT FEDERAL WAY LINK EXTENSION

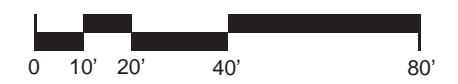


SECTION LOOKING SOUTH



SECTION LOOKING EAST

- | | |
|--|--|
|  STATION PLAZA |  BUS LAYOVER |
|  VERTICAL CIRCULATION |  BUS PICK-UP / DROP OFF |
|  TICKETING / ENTRY HALL |  PARATRANSIT |
|  PLATFORM |  BICYCLE STORAGE |
|  ANCILLARY SPACES |  CONSTRUCTION STAGING / PARKING |
|  TPSS | |



DRAFT EIS - CONCEPTUAL DESIGN
 KENT/DES MOINES SR 99 EAST STATION OPTION
 SECTIONS

APRIL 2015
 FWLE_S99_AX006
 130

7/17/2014 11:28:52 AM
 G:\BIM\PROJECTS\FWLE\FEDERAL WAY TRANSIT EXTENSION\2 CLIENT\2 DATA\INCOMING-HDR\40717 UPDATED\TITLEBLOCKS\TTLBLK.DWG

