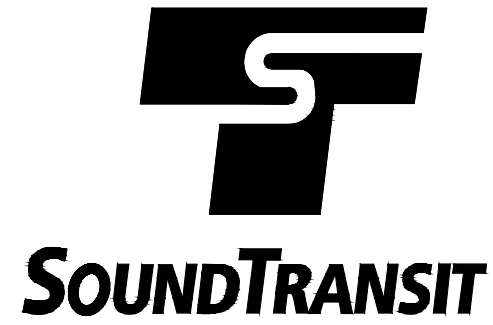


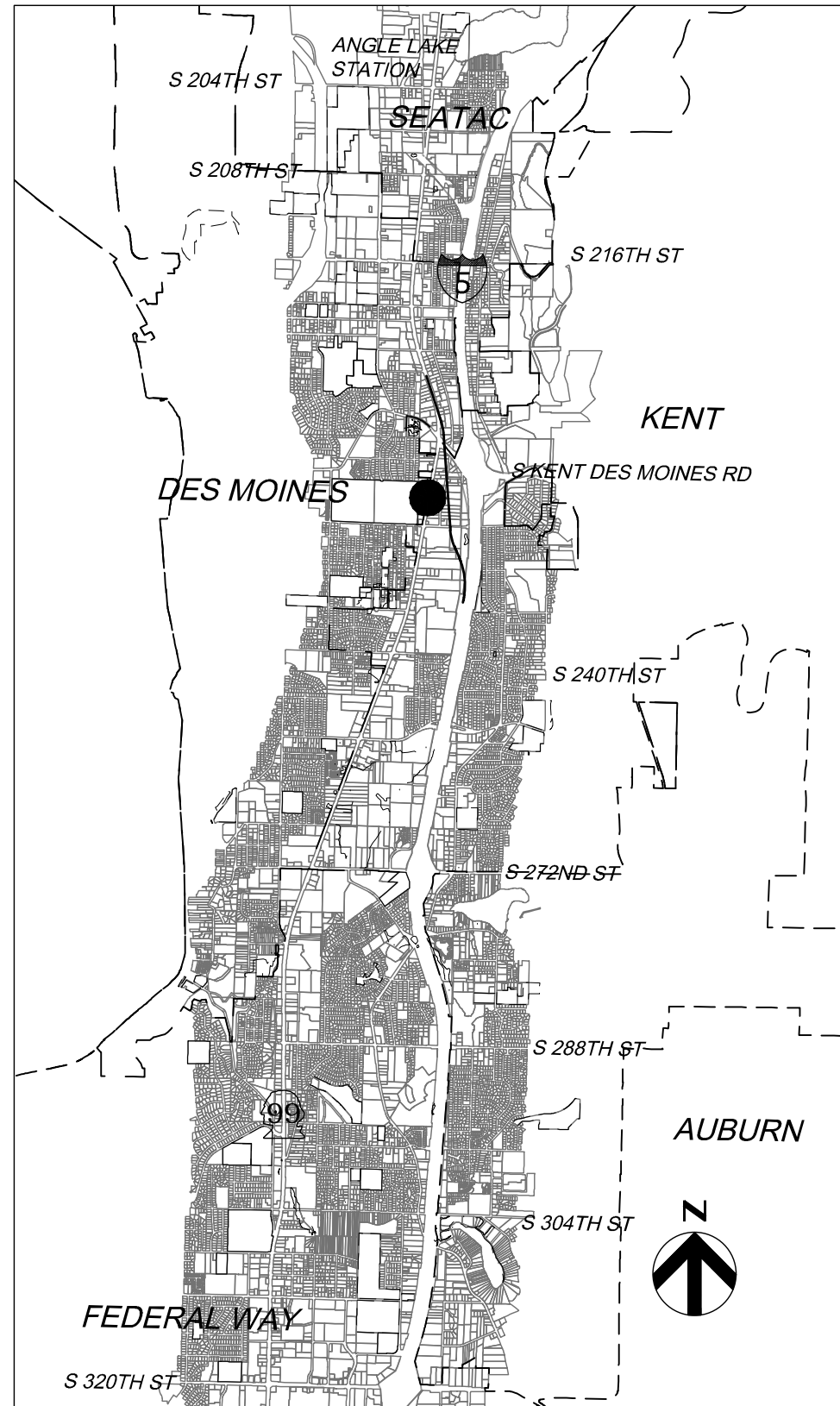
DRAFT EIS - CONCEPTUAL DESIGN SR 99 TO I-5 ALTERNATIVE



SOUND TRANSIT
FEDERAL WAY LINK EXTENSION
DRAFT EIS - CONCEPTUAL DESIGN SR 99 TO I-5 ALTERNATIVE

APRIL 2015

SHEET KEY
SR 99 TO I-5 ALTERNATIVE



PROJECT LOCATION MAP

SOUND TRANSIT FEDERAL WAY LINK EXTENSION

Sheet No.	Drawing No.	Sheet Title
SR99 TO I-5 ALTERNATIVE		
144	SR99-L00-GX00	COVER SHEET
145	SR99-L00-GX01	SHEET INDEX
146	SR99-L00-GX02	SHEET INDEX KEYMAP
147	SR99-L1-PP01	TRACK PLAN AND PROFILE STA 10+00 TO STA 35+00
148	SR99-L2-PP02	TRACK PLAN AND PROFILE STA 35+00 TO STA 63+00
149	SR99-L3-PP03	TRACK PLAN AND PROFILE STA 63+00 TO STA 79+97.70
150	FWLE_S99_to_I-5_AP001	KENT/DES MOINES 30TH AVENUE WEST STATION - SITE PLAN
151	FWLE_S99_to_I-5_AX001	KENT/DES MOINES 30TH AVENUE WEST STATION - SECTIONS

ABBREVIATIONS

B	
BP	BEGIN POINT
C	
CTR	CENTER
CL	CENTERLINE
CS	CURVE TO SPIRAL
D	
DO	DESIGN OPTION
DWG	DRAWING
E	
E	EAST/ELECTRICAL
EL	ELEVATION
EP	END POINT
EX	EXISTING
F	
FWLE	FEDERAL WAY LINK EXTENSION
FWTC	FEDERAL WAY TRANSIT CENTER
G	
G	GAS
H	
HC	HIGHLINE COLLEGE
HORZ	HORIZONTAL
K	
KC	KING COUNTY
KCM	KING COUNTY METRO
KDM	KENT/DES MOINES
Kv	KILOVOLTS
M	
MPH	MILES PER HOUR
N	
N	NORTH
NB	NORTHBOUND
O	
OE	OVERHEAD ELECTRICAL
P	
PC	POINT OF CURVATURE
PL	PLACE
PS	POINT OF SWITCH
PT	POINT OF TANGENCY
PVC	POINT OF VERTICAL CURVATURE
PVI	POINT OF VERTICAL INTERSECTION
PVT	POINT OF VERTICAL TANGENCY
R	
R	RADIUS
RD	ROAD
ROW	RIGHT OF WAY

S	
S	SOUTH
SB	SOUTH BOUND
SC	SPIRAL TO CURVE
SF	SQUARE FEET
SR	STATE ROUTE
ST	STREET, SPIRAL TO TANGENT, or SOUND TRANSIT STATION
STA	
T	
TPSS	TRACTION POWER SUBSTATION
TS	TANGENT TO SPIRAL
TYP	TYPICAL
V	
V	VELOCITY

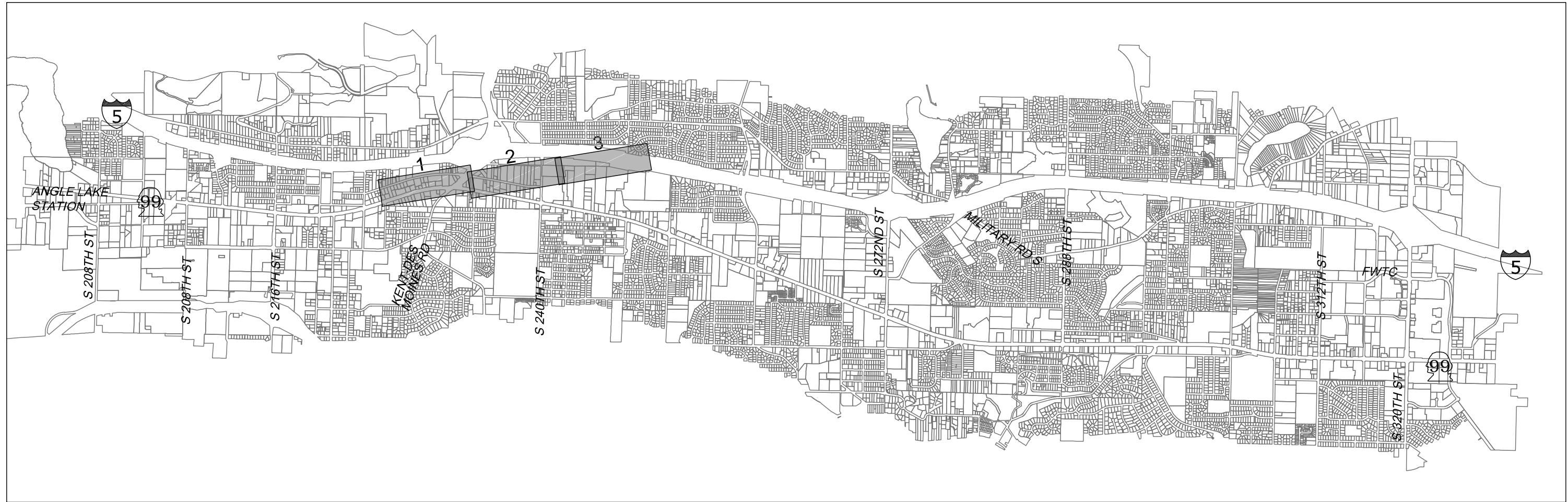
EXISTING FEATURES

	RIGHT OF WAY LINE
	LOT LINE
	GAS
	OVERHEAD ELECTRICAL
	UNDERGROUND ELECTRICAL
	WETLAND
	STREAM
	TRACK CENTERLINE
	EXISTING GROUND (PROFILE)
	CONTOUR LINE

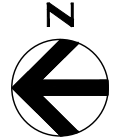
PROPOSED FEATURES

	PROPOSED WSDOT ROW
	CITY LIMITS
	CONSTRUCTION FOOTPRINT
	GUIDEWAY CENTERLINE
	CURB AND SIDEWALK
	BOTTOM OF STRUCTURE (PROFILE)
	TOP OF RAIL (PROFILE)
	STATION PLATFORM
	AT-GRADE /TRENCH (BALLASTED) TRACK
	ELEVATED GUIDEWAY
	COLUMNS / STRADDLE BENTS
	LONG SPAN COLUMNS
	HEAD WALL
	TPSS BUILDING
	NEW SIGNAL

SOUND TRANSIT FEDERAL WAY LINK EXTENSION



SR99 TO I-5 SHEET LAYOUT MATRIX			
	1	2	3
L - SR 99 TO I-5 ALTERNATIVE	X	X	X



2/26/2015 9:20:57 AM C:\P\WORKING\SEAD\114172SR99-00-GX02.DWG CFOX

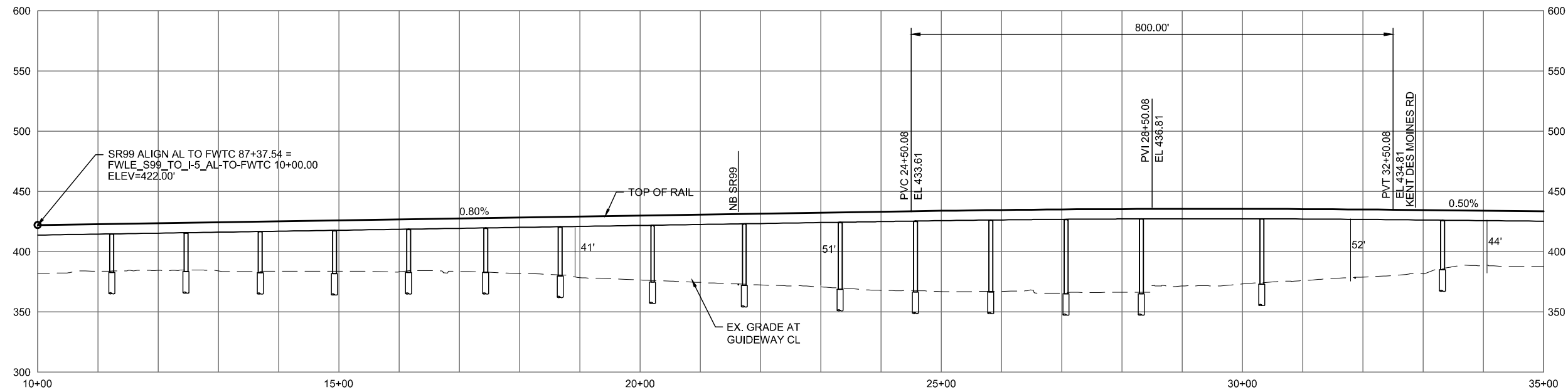
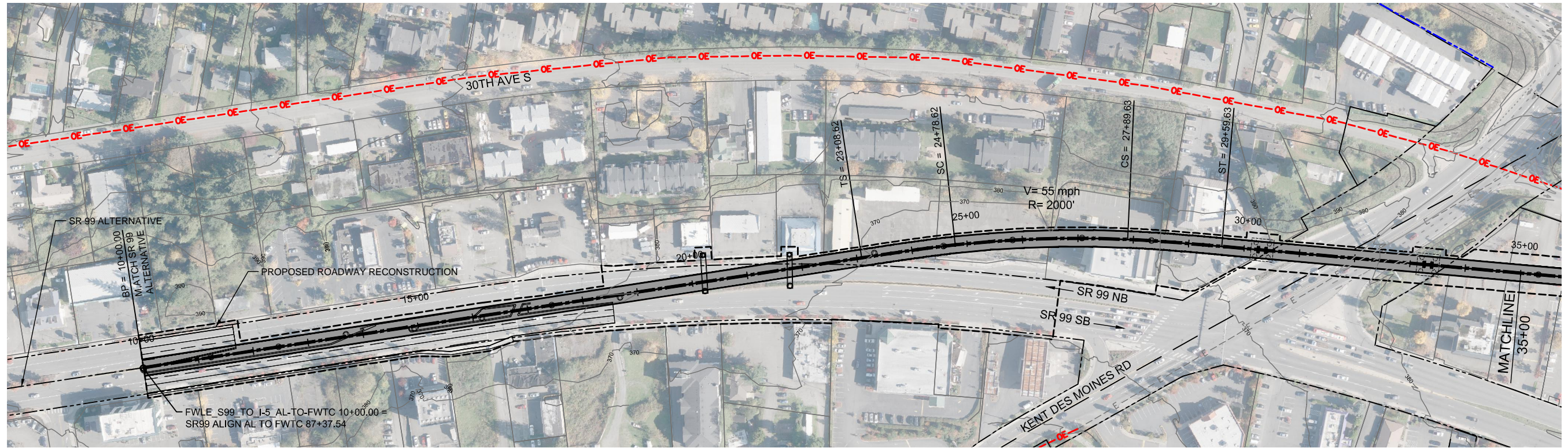


DRAFT EIS - CONCEPTUAL DESIGN
 SR 99 TO I-5 ALTERNATIVE
 SHEET INDEX KEYMAP

APRIL 2015

SR99-L00-GX02
 146

SOUND TRANSIT FEDERAL WAY LINK EXTENSION



2/26/2015 5:07:17 PM C:\P\WORKING\SEAD\114119L\FWLE_S99_TO_I-5.DWG CFOX

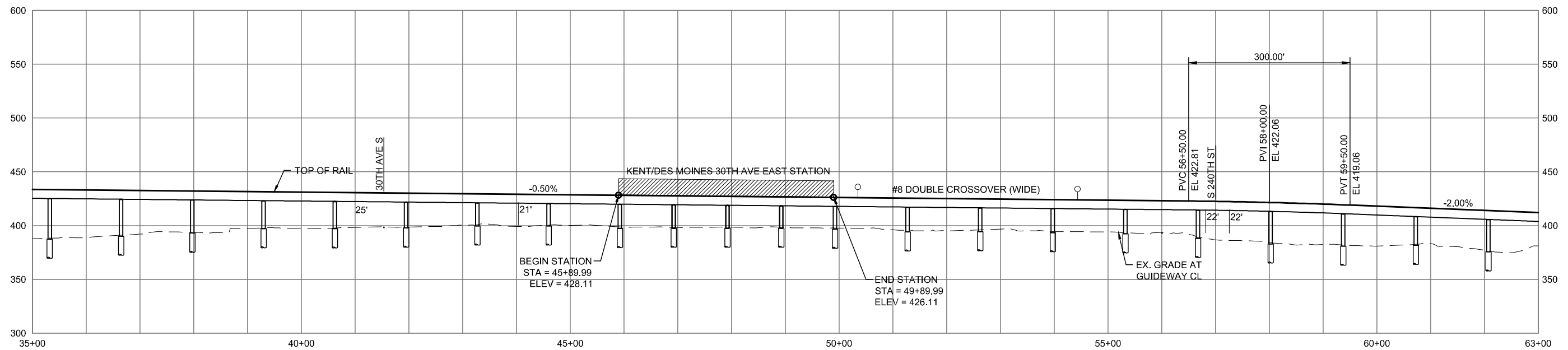
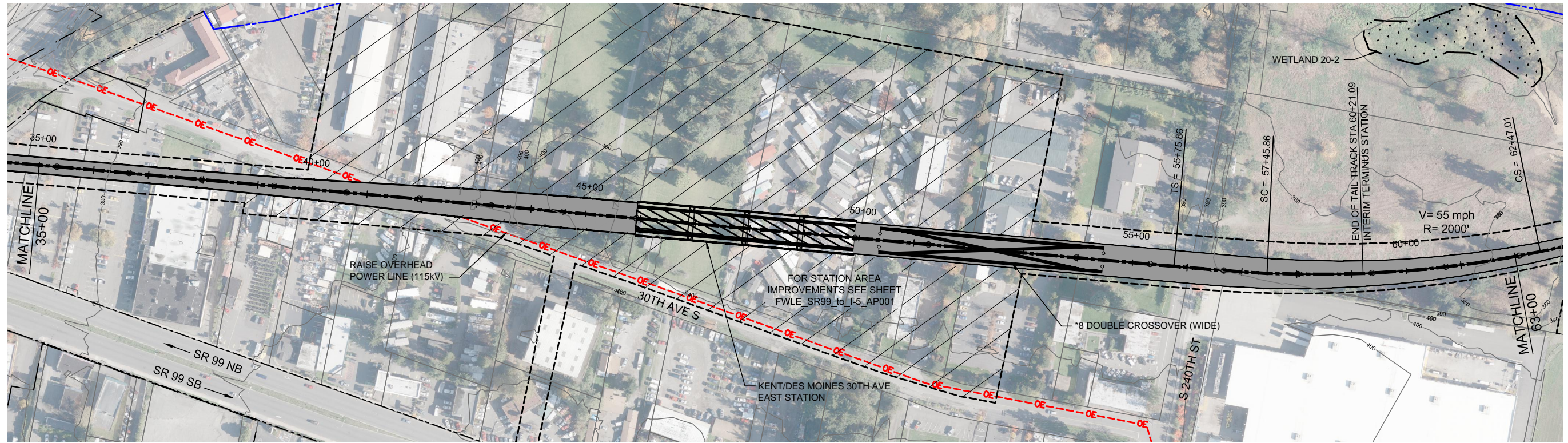


DRAFT EIS - CONCEPTUAL DESIGN
 TRACK PLAN & PROFILE AND ROADWAY RECONSTRUCTION
 SR 99 TO I-5 ALTERNATIVE
 STA 10+00 TO STA 35+00

APRIL 2015

SR99-L1-PP01
 147

SOUND TRANSIT FEDERAL WAY LINK EXTENSION



2/26/2015 5:07:36 PM C:\P\WORKING\SEAD\114119L\FWLE_SR99_TO_I-5.DWG CFOX

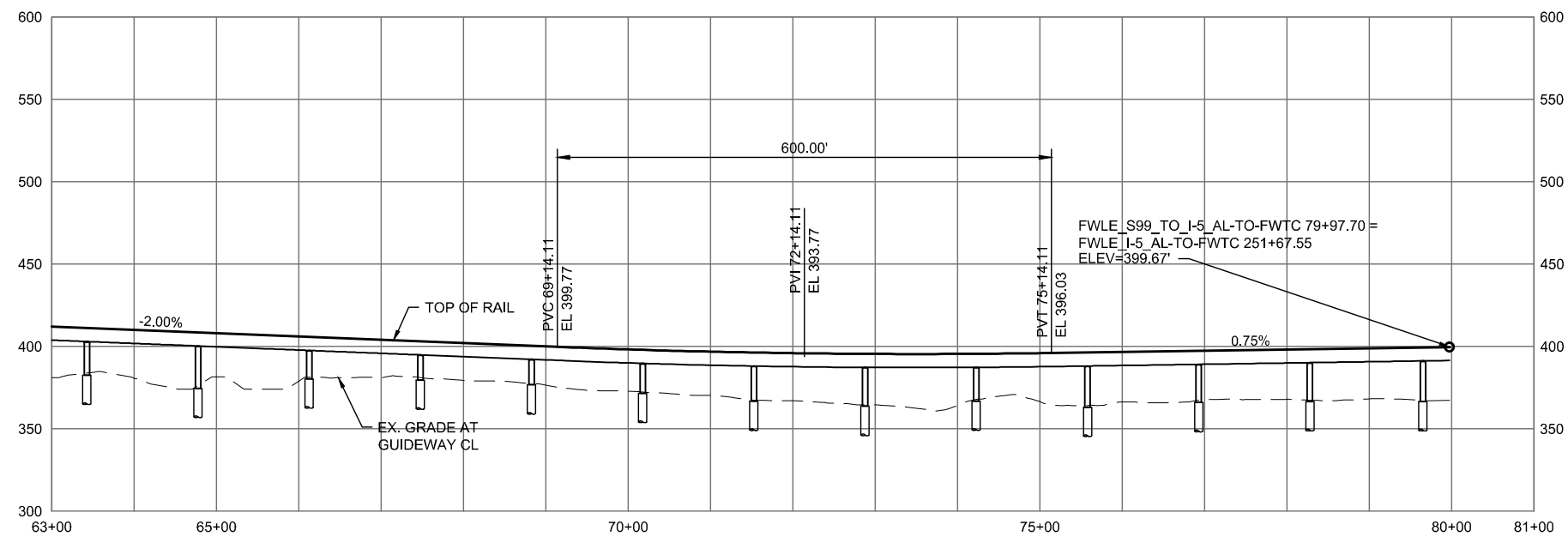
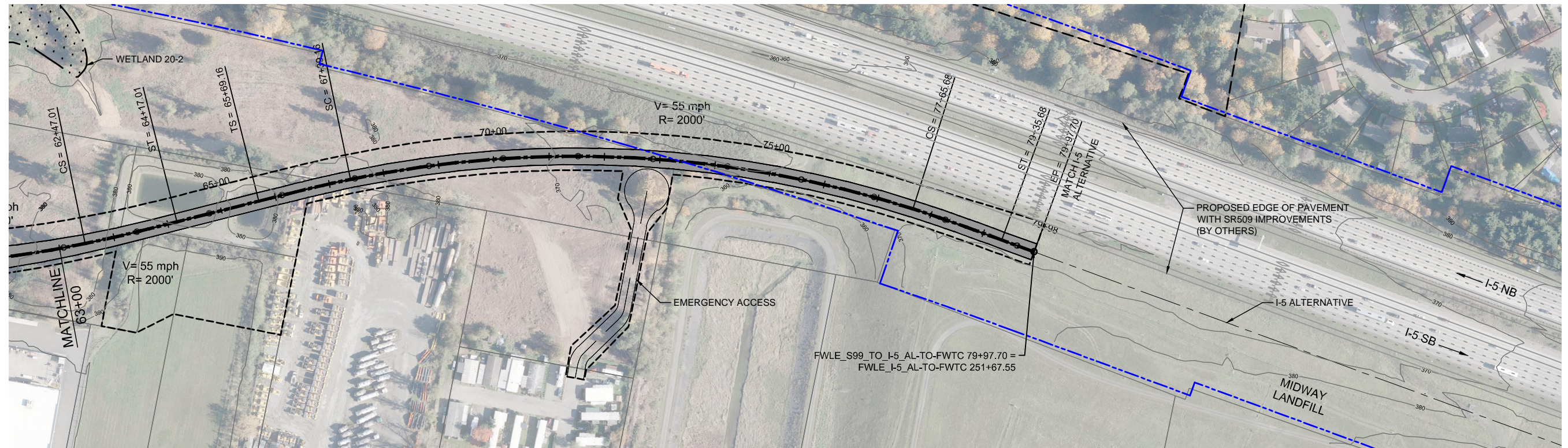


DRAFT EIS - CONCEPTUAL DESIGN
TRACK PLAN & PROFILE AND ROADWAY RECONSTRUCTION
SR 99 TO I-5 ALTERNATIVE
STA 35+00 TO STA 63+00

APRIL 2015

SR99-L2-PP02
148

SOUND TRANSIT FEDERAL WAY LINK EXTENSION



2/25/2015 5:07:48 PM C:\P\WORKING\SEAD\114119L\FWLE_SR99_TO_I-5.DWG CFOX

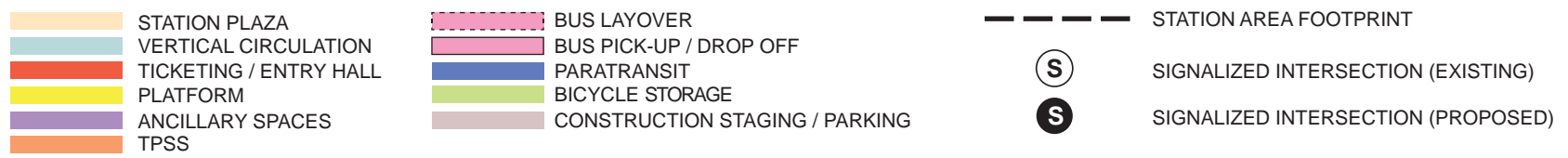
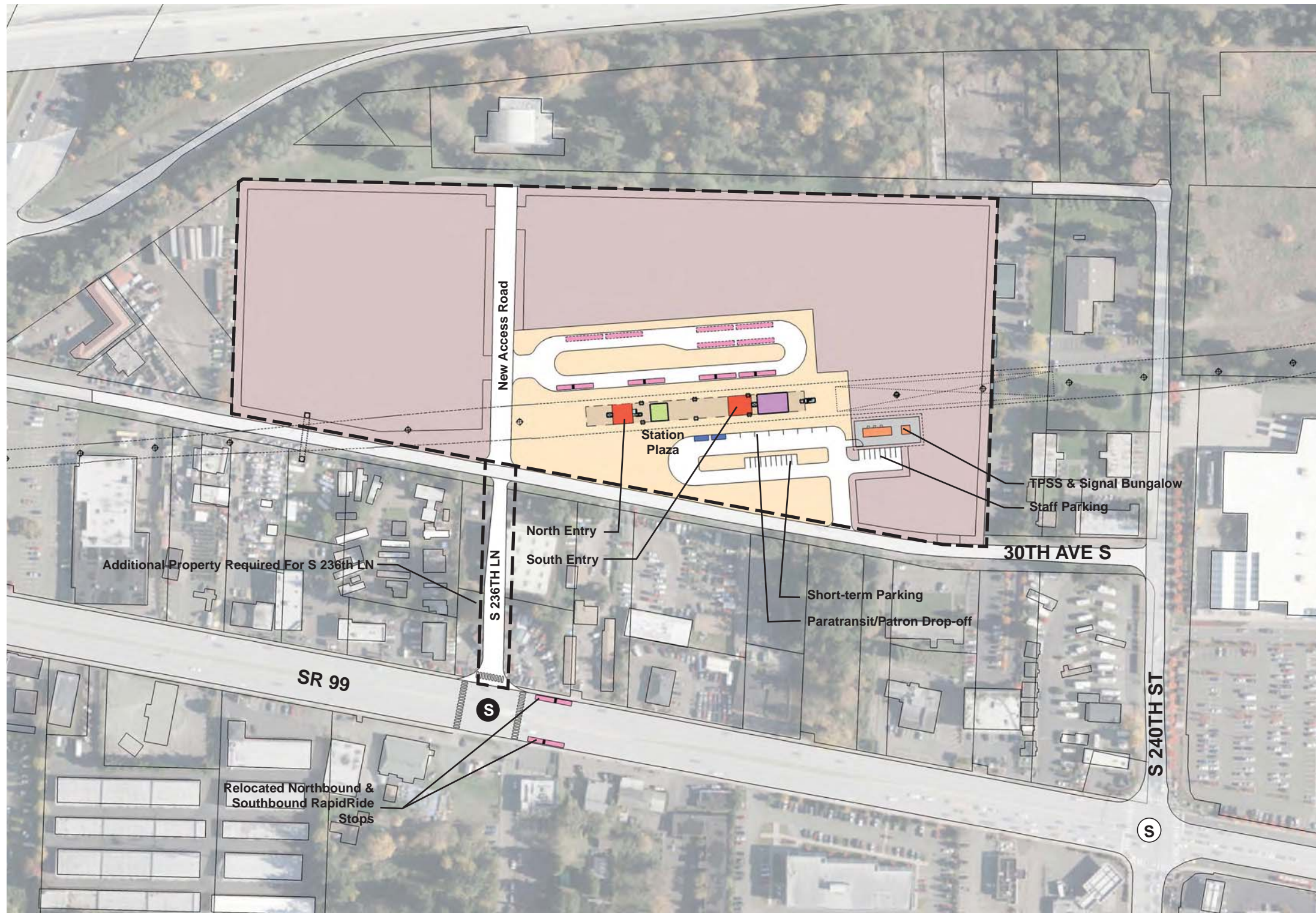


DRAFT EIS - CONCEPTUAL DESIGN
 TRACK PLAN & PROFILE AND ROADWAY RECONSTRUCTION
 SR 99 TO I-5 ALTERNATIVE
 STA 63+00 TO STA 79+97.70

APRIL 2015

SR99-L3-PP03
 149

SOUND TRANSIT FEDERAL WAY LINK EXTENSION



ASSUMPTIONS:

Kent/Des Moines 30th Avenue East Station	
Alternative(s)	SR 99 to I-5
Boardings	2,500
Boardings (with 216th Station)	2,500
Boardings (interim terminus)	4,500
Station Configuration	
Terminus / In-Line	Interim Terminus
Station Type	Center Platform - Elevated
Platform Width	34'
Tail track	900'
Crossover	Yes
TPSS	Yes
Program	
KC Metro Ancillary Spaces (SF)	200
ST Ancillary Spaces (SF)	1,800
Total Ancillary Spaces (SF)	2,000
Vertical Circulation	
# of entrances	2
# of escalators	1
# of staircases (patron)	1
# of elevators	2
# of emergency stairs	2
Bus/ Paratransit Facilities	
Bus bays (KCM)	2 bays, one 60' coach each
Bus bays (ST)	1 bay, two 60' coaches
Rapid Ride	On-street at SR 99
Bus layover (KCM)	2 bays, two 60' coaches each
Bus layover (ST)	1 bay, two 60' coaches
Paratransit spaces	1 permanent, 1 interim
Communications Facility	Tier 2
Parking & Amenities	
Bike storage	900 SF
Patron drop-off	6 spaces
Short-term patron parking	7 to 10 spaces
Staff parking	4 spaces
Service/emerg. vehicle park.	2 spaces, separate lot
Signal bungalow / TPSS park.	2 spaces, dedicated
Long-term patron parking	500 spaces (structure)
Temporary patron parking*	500 spaces (surface)
Total proposed patron parking*	1000 spaces

*Only required for interim terminus condition



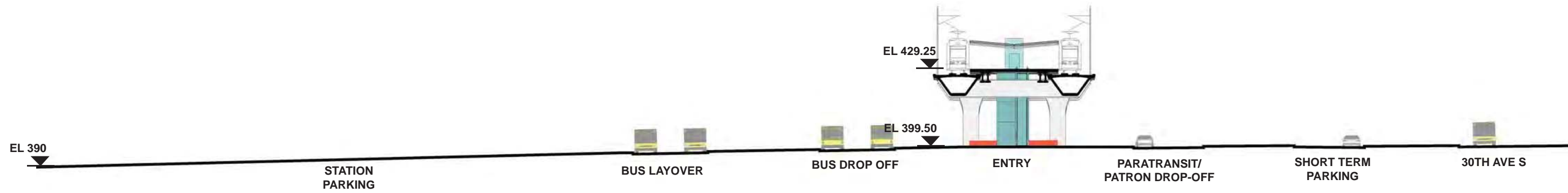
7/17/2014 11:36:52 AM JHAMMERQUIST G:\BIM\PROJECTS\67812\FEDERAL WAY TRANSIT EXTENSION\2 CLIENT\2 DATA\COMING-HRV\40717 UPDATED TITLEBLOCK\DESIGN.TTL\B\K.DWG



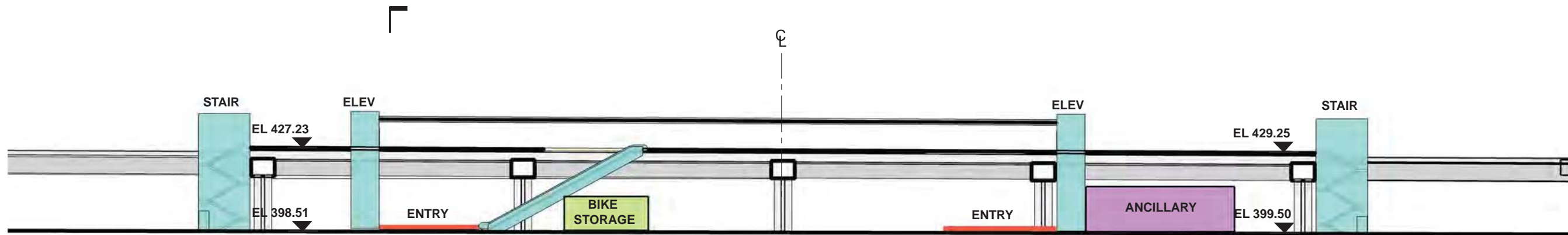
DRAFT EIS - CONCEPTUAL DESIGN
KENT/DES MOINES 30TH AVENUE EAST STATION
SITE PLAN

APRIL 2015
FWLE_S99_to_I-5_AP001
150












SOUND TRANSIT FEDERAL WAY LINK EXTENSION

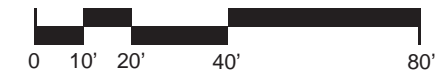


SECTION LOOKING SOUTH



SECTION LOOKING EAST

- | | |
|------------------------------------------------------------------------------------------------------------|--------------------------------------------------------------------------------------------------------------------|
|  STATION PLAZA |  BUS LAYOVER |
|  VERTICAL CIRCULATION |  BUS PICK-UP / DROP OFF |
|  TICKETING / ENTRY HALL |  PARATRANSIT |
|  PLATFORM |  BICYCLE STORAGE |
|  ANCILLARY SPACES |  CONSTRUCTION STAGING / PARKING |
|  TPSS | |



7/17/2014 11:28:52 AM JHAMMERQUIST G:\BIM\PROJECTS\67512\FEDERAL WAY TRANSIT EXTENSION\2 CLIENT\2 DATA\INCOMING-HDRV\40717\UPDATED\TITLEBLOCKS\TITLEBLOCK.DWG



DRAFT EIS - CONCEPTUAL DESIGN
 KENT/DES MOINES 30TH AVENUE EAST STATION
 SECTIONS

APRIL 2015

FWLE_S99_to_I-5_AX001
 151