

Appendix A
Noise Monitoring Details

This page intentionally left blank.



Photo 1: Aerial View



Photo 2: Looking southeast from SR 99



Photo 3: Looking southwest



Photo 4: Looking at the intersection of SR 99 and S 204th Street

Monitoring Location M-1
20406 Pacific Hwy. S. (Sleep Inn)
SeaTac, Washington



Michael Minor & Associates
Sound.Vibration.Air
Portland, Oregon

Figure 1
Noise Monitoring Locations
Federal Way Extension

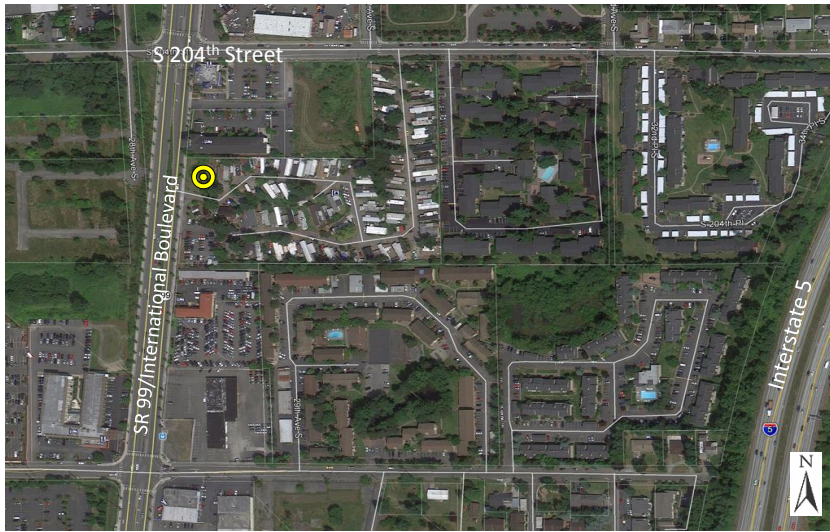


Photo 1: Aerial View



Photo 2: Looking northwest at SR 99



Photo 3: Looking southeast



Photo 4: Looking northeast from the park entrance

Monitoring Location M-2
20440 Int'l Blvd (The Firs Mobile Home Park)
SeaTac, Washington



Michael Minor & Associates
Sound.Vibration.Air
Portland, Oregon

Figure 2
Noise Monitoring Locations
Federal Way Extension



Photo 1: Aerial View



Photo 2: Looking northwest across S 208th Street



Photo 3: Looking east down S 208th Street towards I-5



Photo 4: Looking west down S 208th Street towards SR 99

Monitoring Location M-3
 3002 S 208th St. (Willow Lake Apts.)
 SeaTac, Washington



Michael Minor & Associates
 Sound.Vibration.Air
 Portland, Oregon

Figure 3
 Noise Monitoring Locations
 Federal Way Extension



Photo 1: Aerial View



Photo 2: Looking east towards I-5 at end of S 211th Street



Photo 3: Looking south across S 211th Street



Photo 4: Looking west down S 211th Street

Monitoring Location M-4
WSDOT ROW near 3120 S 211th St.
SeaTac, Washington



Michael Minor & Associates
Sound.Vibration.Air
Portland, Oregon

Figure 4
Noise Monitoring Locations
Federal Way Extension



Photo 1: Aerial View



Photo 2: Looking north towards along right of way fence line



Photo 3: Looking east towards I-5



Photo 4: Looking south from down 32nd Avenue S

Monitoring Location M-5
WS.DOT ROW near 21211 32nd Ave. S.
SeaTac, Washington



Michael Minor & Associates
Sound.Vibration.Air
Portland, Oregon

Figure 5
Noise Monitoring Locations
Federal Way Extension



Photo 1: Aerial View



Photo 2: Looking west across 31st Avenue S

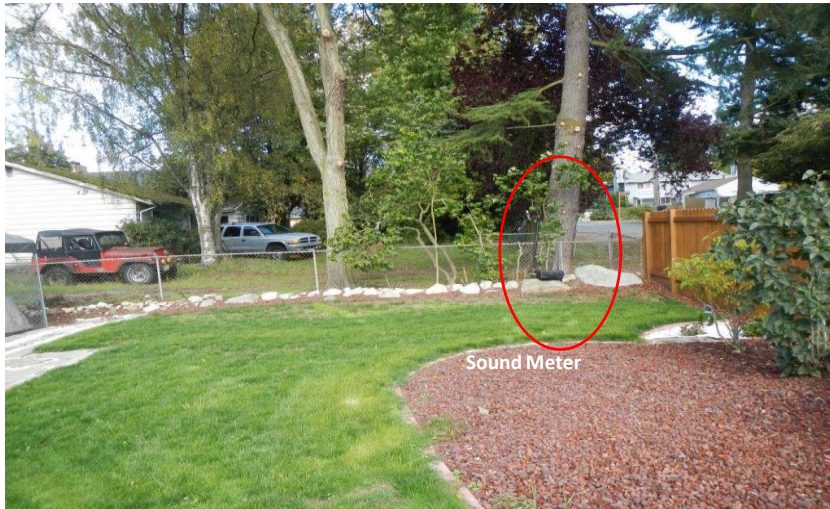


Photo 3: Looking north



Photo 4: Looking southwest

Monitoring Location M-6
21815 31st Ave. S
Des Moines, Washington



Michael Minor & Associates
Sound.Vibration.Air
Portland, Oregon

Figure 6
Noise Monitoring Locations
Federal Way Extension



Photo 1: Aerial View

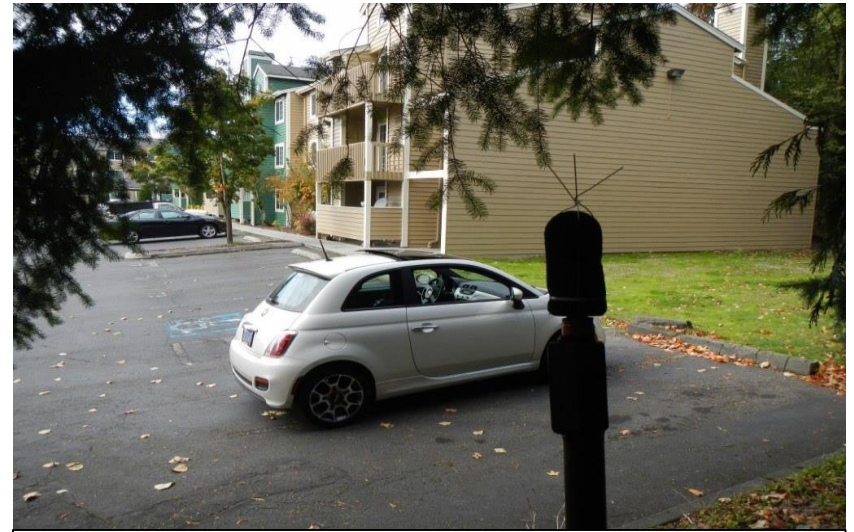


Photo 2: Looking northwest



Photo 3: Looking west



Photo 4: Looking southeast towards I-5

Monitoring Location M-7 Back
22700 30th Ave. S. (Newport Village Condominiums)
Des Moines, Washington



Michael Minor & Associates
Sound.Vibration.Air
Portland, Oregon

Figure 7
Noise Monitoring Locations
Federal Way Extension



Photo 1: Aerial View



Photo 2: Looking northeast

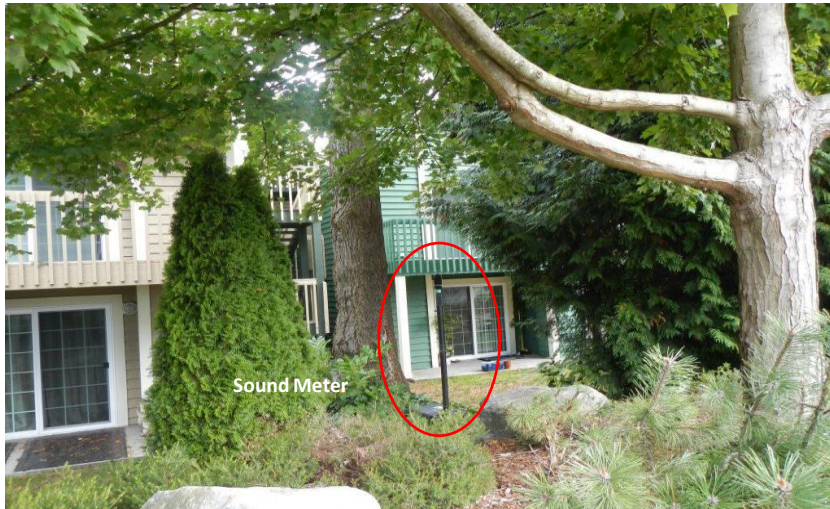


Photo 3: Looking southeast



Photo 4: Looking northwest towards 30th Avenue S

Monitoring Location M-7 Front
22700 30th Ave. S. (Newport Village Condominiums)
Des Moines, Washington



Michael Minor & Associates
Sound.Vibration.Air
Portland, Oregon

Figure 8
Noise Monitoring Locations
Federal Way Extension

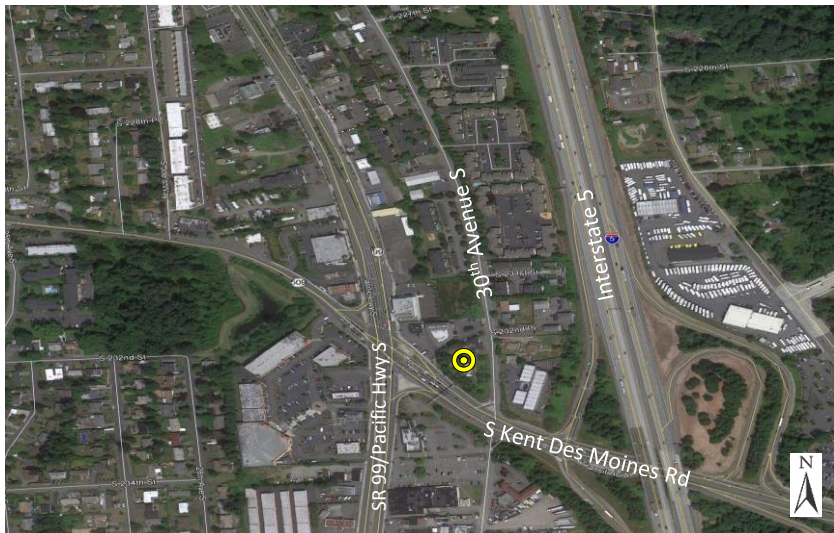


Photo 1: Aerial View



Photo 2: Looking northwest



Photo 3: Looking southwest



Photo 4: Looking northeast

Monitoring Location M-8
23215 30th Ave. S
Des Moines, Washington



Michael Minor & Associates
Sound.Vibration.Air
Portland, Oregon

Figure 9
Noise Monitoring Locations
Federal Way Extension

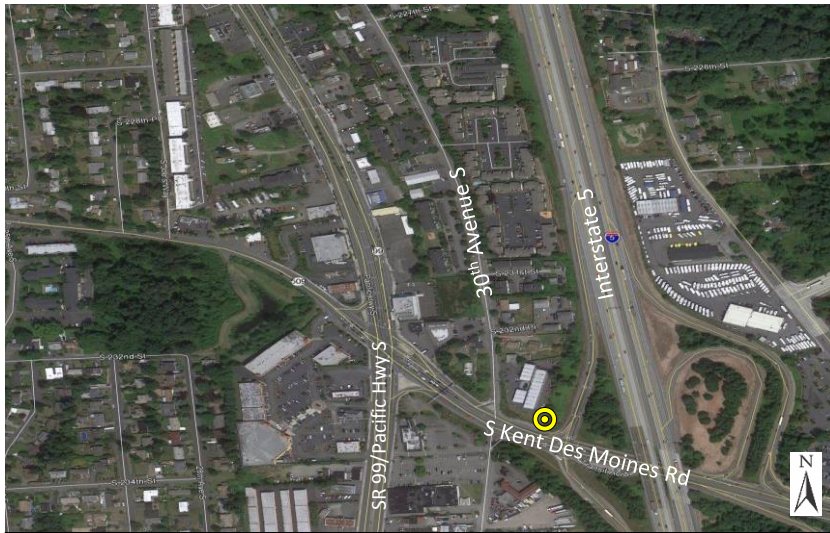


Photo 1: Aerial View



Photo 2: Looking west



Photo 3: Looking northwest



Photo 4: Looking southeast towards I-5

Monitoring Location M-9
WSDOT ROW near King's Arms Motel
Des Moines, Washington



Michael Minor & Associates
Sound.Vibration.Air
Portland, Oregon

Figure 10
Noise Monitoring Locations
Federal Way Extension



Photo 1: Aerial View



Photo 2: Looking southwest at 30th Avenue S



Photo 3: Looking northwest at 30th Avenue S



Photo 4: Looking east church and I-5

Monitoring Location M-10
23634 30th Ave. S (Park of the Pines - Homes)
Kent, Washington



Michael Minor & Associates
Sound.Vibration.Air
Portland, Oregon

Figure 11
Noise Monitoring Locations
Federal Way Extension



Photo 1: Aerial View



Photo 2: Looking northeast at the church



Photo 3: Looking southeast at I-5



Photo 4: Looking west towards 30th Avenue S

Monitoring Location M-10A
23634 30th Ave. S. (Park of the Pines - Church)
Kent, Washington



Michael Minor & Associates
Sound.Vibration.Air
Portland, Oregon

Figure 12
Noise Monitoring Locations
Federal Way Extension



Photo 1: Aerial View



Photo 2: Looking west at 30th Ave S.

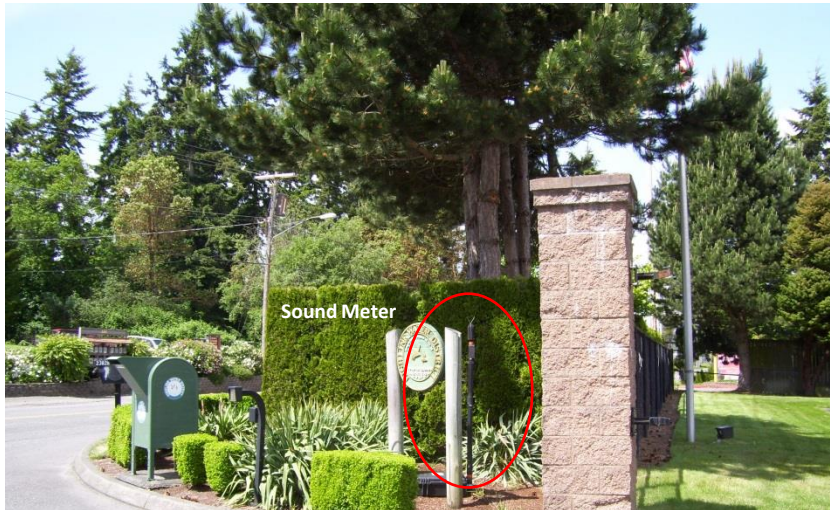


Photo 3: Looking north



Photo 4: Looking southeast

Monitoring Location M-11
23828 30th Ave. S.
Kent, Washington



Michael Minor & Associates
Sound.Vibration.Air
Portland, Oregon

Figure 13
Noise Monitoring Locations
Federal Way Extension

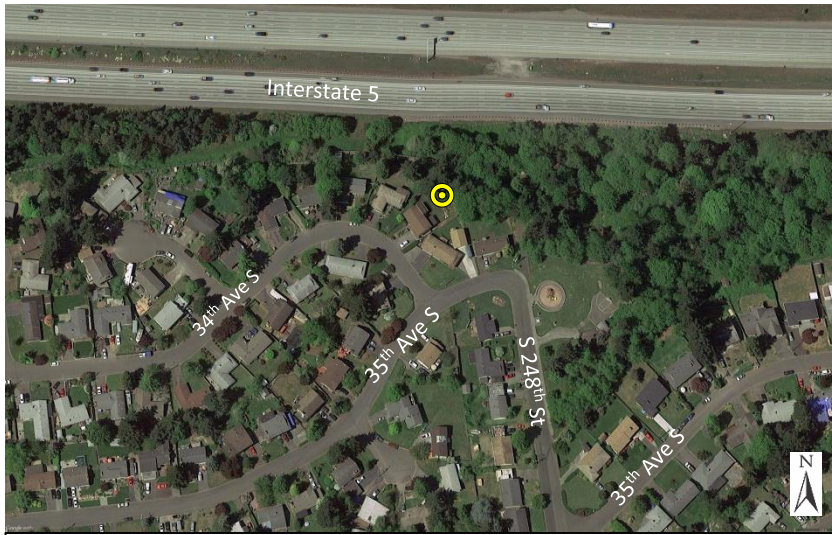


Photo 1: Aerial View



Photo 2: Looking north toward I-5



Photo 3: Looking east



Photo 4: Looking Northeast toward I-5

Monitoring Location M-12
3320 S 248th Pl.
Kent, Washington



Michael Minor & Associates
Sound.Vibration.Air
Portland, Oregon

Figure 14
Noise Monitoring Locations
Federal Way Extension

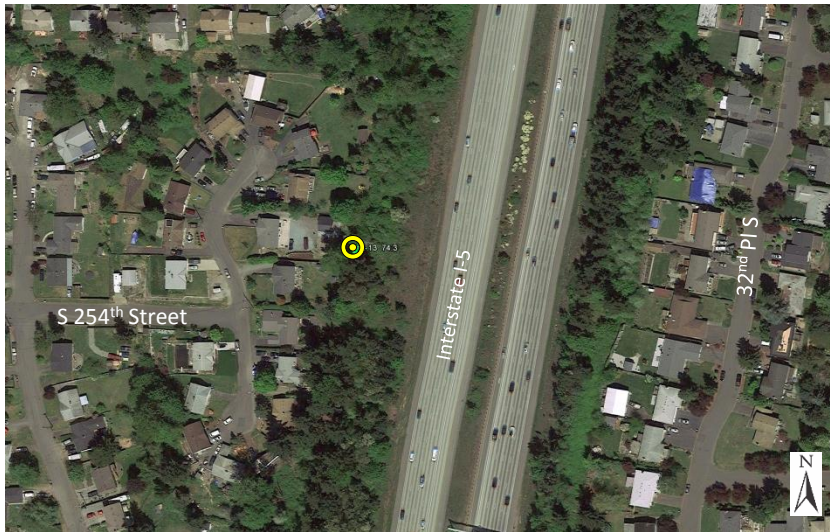


Photo 1: Aerial View



Photo 2: Looking east toward I-5



Photo 3: Looking northwest



Photo 4: Looking southwest

Monitoring Location M-13
25338 31st Ave S.
Kent, Washington



Michael Minor & Associates
Sound.Vibration.Air
Portland, Oregon

Figure 15
Noise Monitoring Locations
Federal Way Extension

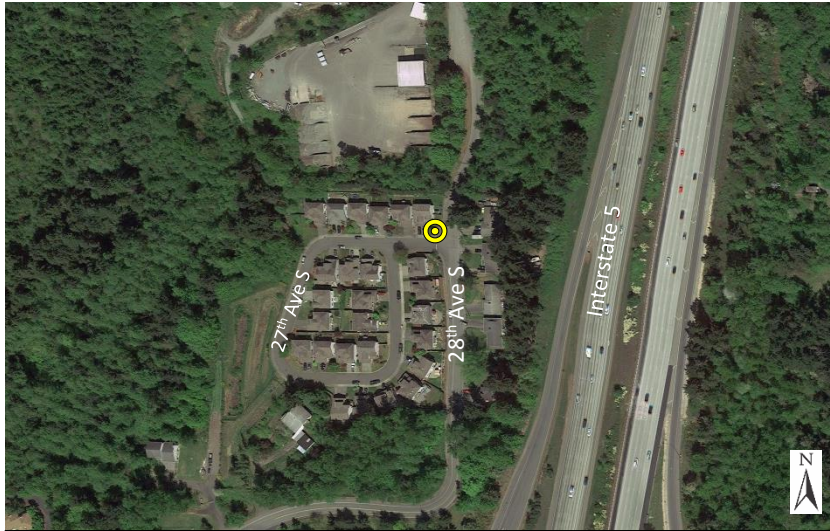


Photo 1: Aerial View



Photo 2: Looking northwest



Photo 3: Looking southwest toward S 268th Pl.



Photo 4: Looking south down 28th Ave S.

Monitoring Location M-15
2728 S 268th Pl.
Kent, Washington



Michael Minor & Associates
Sound.Vibration.Air
Portland, Oregon

Figure 16
Noise Monitoring Locations
Federal Way Extension



Photo 1: Aerial View



Photo 2: Looking north toward S 272nd



Photo 3: Looking south toward Mark Twain Elementary



Photo 4: Looking northeast toward I-5

Monitoring Location M-16
2450 S. Star Lake Rd. (Mark Twain Elementary School)
Federal Way, Washington



Michael Minor & Associates
Sound.Vibration.Air
Portland, Oregon

Figure 17
Noise Monitoring Locations
Federal Way Extension

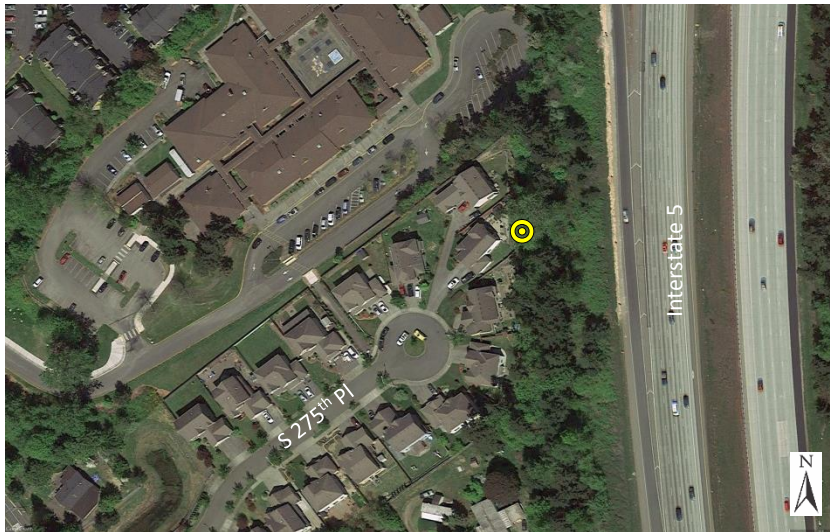


Photo 1: Aerial View



Photo 2: Looking south



Photo 3: Looking north



Photo 4: Looking east toward I-5

Monitoring Location M-17
2720 S 275th Pl.
Federal Way, Washington



Michael Minor & Associates
Sound.Vibration.Air
Portland, Oregon

Figure 18
Noise Monitoring Locations
Federal Way Extension



Photo 1: Aerial View



Photo 2: Looking north



Photo 3: Looking southwest toward 29th Ave S.



Photo 4: Looking east toward I-5

Monitoring Location M-19
28118 29th Ave
Federal Way, Washington



Michael Minor & Associates
Sound.Vibration.Air
Portland, Oregon

Figure 19
Noise Monitoring Locations
Federal Way Extension

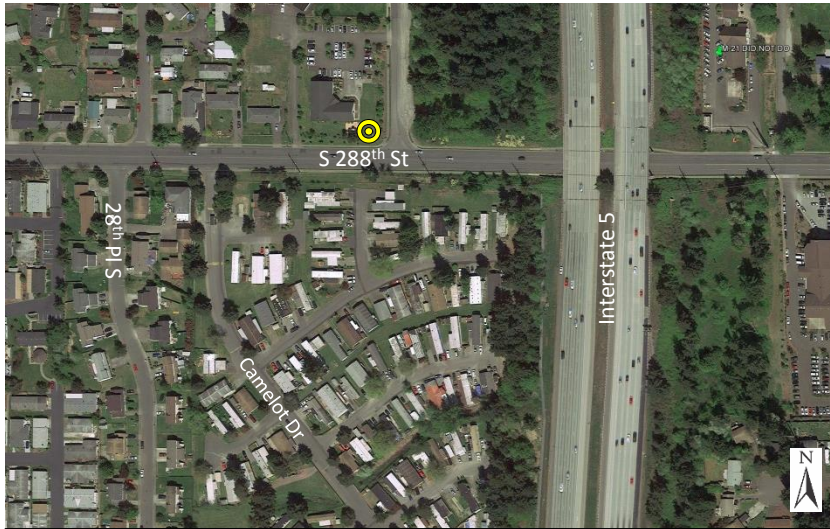


Photo 1: Aerial View



Photo 2: Looking southeast toward I-5



Photo 3: Looking northeast



Photo 4: Looking southwest

Monitoring Location M-22
2920 S. 288th St. (Kumran Methodist Church)
Federal Way, Washington



Michael Minor & Associates
Sound.Vibration.Air
Portland, Oregon

Figure 20
Noise Monitoring Locations
Federal Way Extension



Photo 1: Aerial View



Photo 2: Looking east toward I-5



Photo 3: Looking southwest down Sir Galahad Ct.



Photo 4: Looking west

Monitoring Location M-23 North
3001 S. 288th St. (End of Sir Galahad Ct. in Camelot
Square Mobile Home Park) Federal Way, Washington



Michael Minor & Associates
Sound.Vibration.Air
Portland, Oregon

Figure 21
Noise Monitoring Locations
Federal Way Extension