

Photo 1: Aerial View



Photo 2: Looking northeast toward I-5



Photo 3: Looking south



Photo 4: Looking southwest down 288<sup>th</sup> St.

Monitoring Location M-23 South  
 3001 S. 288th St. (223 Canterbury Drive in Camelot  
 Square Mobile Home Park) Federal Way, Washington



Michael Minor & Associates  
 Sound.Vibration.Air  
 Portland, Oregon

Figure 22  
 Noise Monitoring Locations  
 Federal Way Extension



Photo 1: Aerial View



Photo 2: Looking southwest



Photo 3: Looking east toward I-5



Photo 4: Looking north

Monitoring Location M-25  
 30012 Military Rd. (Church of Christ at Federal Way)  
 Federal Way, Washington



Michael Minor & Associates  
 Sound.Vibration.Air  
 Portland, Oregon

Figure 23  
 Noise Monitoring Locations  
 Federal Way Extension



Photo 1: Aerial View



Photo 2: Looking east toward I-5



Photo 3: Looking west toward 2833 S 308th Ln



Photo 4: Looking southeast toward I-5

Monitoring Location M-27  
 2833 S. 308th Lane (Studio)  
 Federal Way, Washington



Michael Minor & Associates  
 Sound.Vibration.Air  
 Portland, Oregon

Figure 24  
 Noise Monitoring Locations  
 Federal Way Extension



Photo 1: Aerial View



Photo 2: Looking east toward I-5



Photo 3: Looking west toward 2833 S 308th Ln



Photo 4: Looking north

Monitoring Location M-27A  
 2833 S. 308th Lane (Home)  
 Federal Way, Washington



Michael Minor & Associates  
 Sound.Vibration.Air  
 Portland, Oregon

Figure 25  
 Noise Monitoring Locations  
 Federal Way Extension



Photo 1: Aerial View



Photo 2: Looking northwest toward Providence Landing Apts.



Photo 3: Looking southeast toward I-5



Photo 4: Looking northeast

Monitoring Location M-28  
 31220 28th Ave. S. (Providence Landing Apts.)  
 Federal Way, Washington



Michael Minor & Associates  
 Sound.Vibration.Air  
 Portland, Oregon

Figure 26  
 Noise Monitoring Locations  
 Federal Way Extension



Photo 1: Aerial View



Photo 2: Looking east toward I-5



Photo 3: Looking west toward 28<sup>th</sup> Ave S.



Photo 4: Looking southeast

Monitoring Location M-29  
 31524 28<sup>th</sup> Ave S.  
 Federal Way, Washington



Michael Minor & Associates  
 Sound.Vibration.Air  
 Portland, Oregon

Figure 27  
 Noise Monitoring Locations  
 Federal Way Extension



Photo 1: Aerial View



Photo 2: Looking northwest toward Truman High School



Photo 3: Looking west toward I-5



Photo 4: Looking south toward the Hampton Inn

Monitoring Location M-30  
 31453 28th Ave. S. (Truman H.S.)  
 Federal Way, Washington



Michael Minor & Associates  
 Sound.Vibration.Air  
 Portland, Oregon

Figure 28  
 Noise Monitoring Locations  
 Federal Way Extension

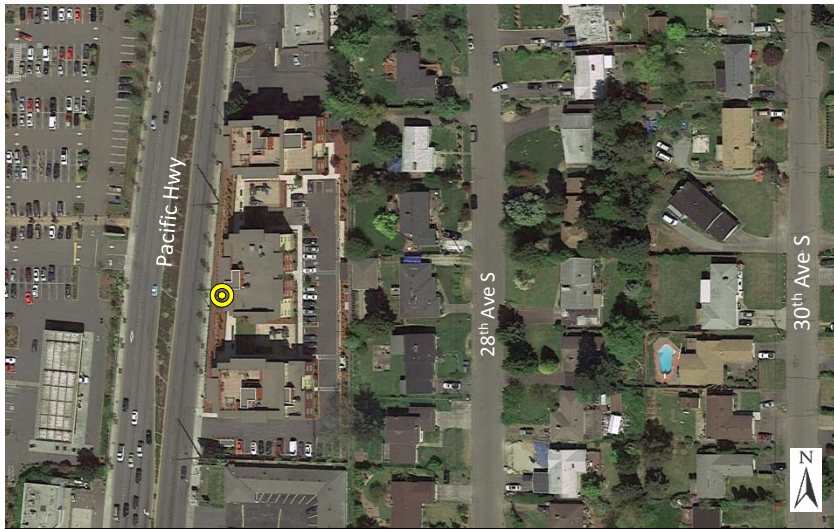


Photo 1: Aerial View



Photo 2: Looking southwest toward Pacific Highway



Photo 3: Looking southeast toward Viewpoint Apts.



Photo 4: Looking northwest toward Pacific Highway

Monitoring Location M-31  
 21428 Pacific Hwy. S. (Viewpoint Apts.)  
 Seatac, Washington



Michael Minor & Associates  
 Sound.Vibration.Air  
 Portland, Oregon

Figure 29  
 Noise Monitoring Locations  
 Federal Way Extension





Photo 1: Aerial View



Photo 2: Looking southwest toward Pacific Highway



Photo 3: Looking north



Photo 4: Looking west toward Pine Terrace Mfg. Home Park

Monitoring Location M-32  
 21814 Pacific Hwy. S. (Pine Terrace Mobile Home Park)  
 Des Moines, Washington



Michael Minor & Associates  
 Sound.Vibration.Air  
 Portland, Oregon

Figure 30  
 Noise Monitoring Locations  
 Federal Way Extension



Photo 1: Aerial View

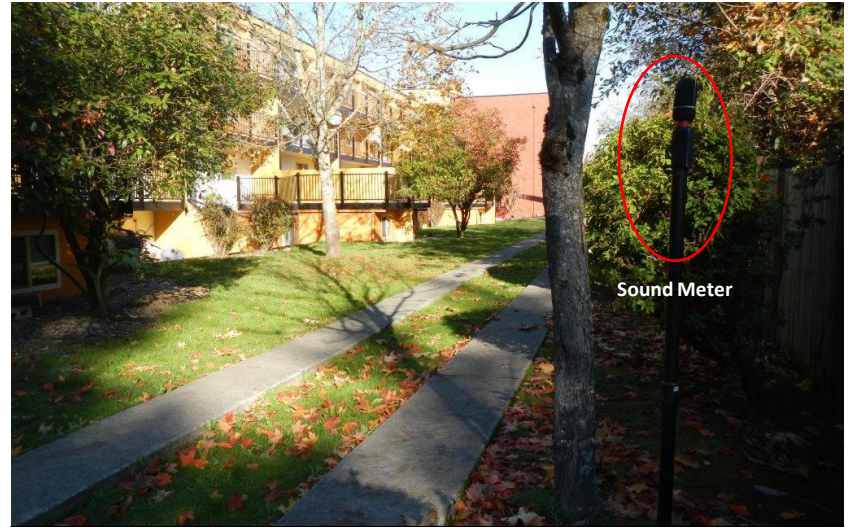


Photo 2: Looking north

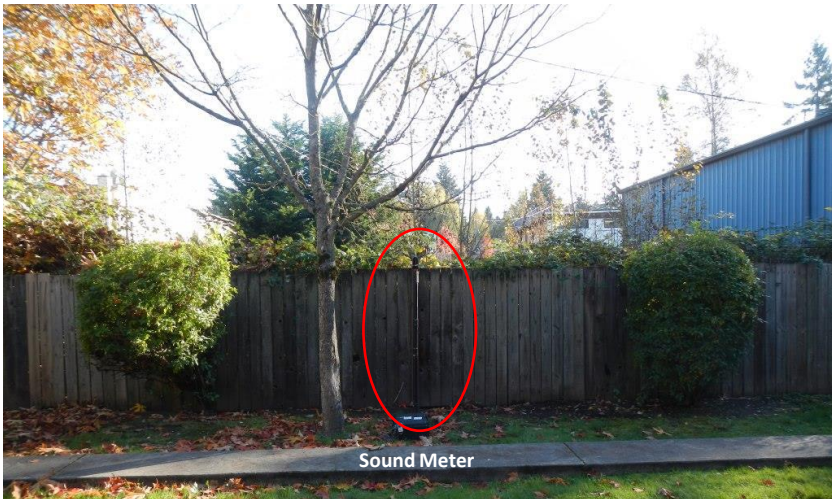


Photo 3: Looking east

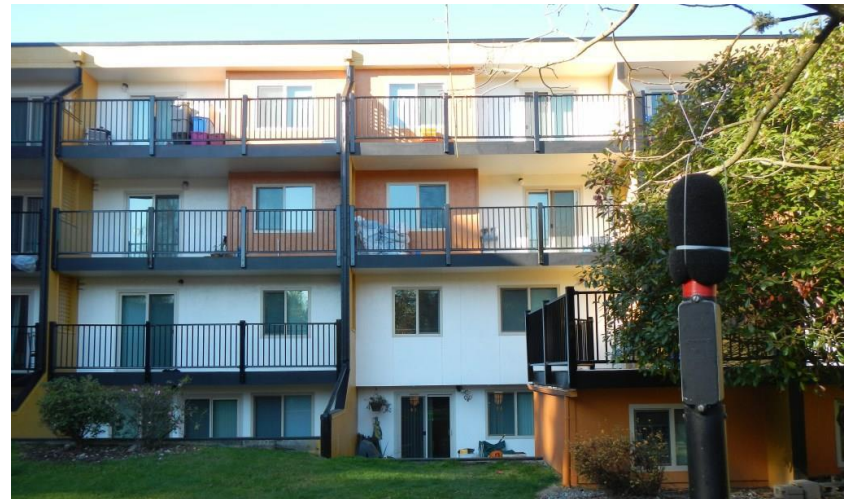


Photo 4: Looking west at the Majestic Bay Apartments

Monitoring Location M-33  
 2459 Pacific Hwy. S. (Majestic Bay Apts.)  
 Des Moines, Washington



Michael Minor & Associates  
 Sound.Vibration.Air  
 Portland, Oregon

Figure 31  
 Noise Monitoring Locations  
 Federal Way Extension



Photo 1: Aerial View



Photo 2: Looking southwest



Photo 3: Looking north



Photo 4: Looking southeast

Monitoring Location M-34  
 2616 S 224th St. (Sea Fox Apts.)  
 Des Moines, Washington



Michael Minor & Associates  
 Sound.Vibration.Air  
 Portland, Oregon

Figure 32  
 Noise Monitoring Locations  
 Federal Way Extension



Photo 1: Aerial View



Photo 2: Looking south



Photo 3: Looking toward the corner of Pacific Hwy S and S 224th St.



Photo 4: Looking northeast

Monitoring Location M-35  
 22323 Pacific Hwy. S. (Citadel Church)  
 Des Moines, Washington



Michael Minor & Associates  
 Sound.Vibration.Air  
 Portland, Oregon

Figure 33  
 Noise Monitoring Locations  
 Federal Way Extension

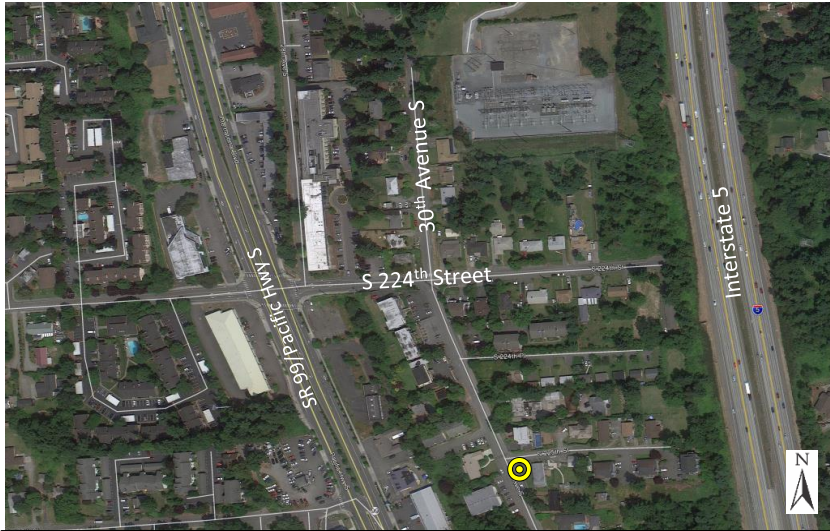


Photo 1: Aerial View



Photo 2: Looking northwest at 30th Avenue S



Photo 3: Looking south at 30th Avenue S



Photo 4: Looking southeast

Monitoring Location M-36  
 22516 30th Ave. S  
 Des Moines, Washington



Michael Minor & Associates  
 Sound.Vibration.Air  
 Portland, Oregon

Figure 34  
 Noise Monitoring Locations  
 Federal Way Extension



Photo 1: Aerial View



Photo 2: Looking southeast



Photo 3: Looking west

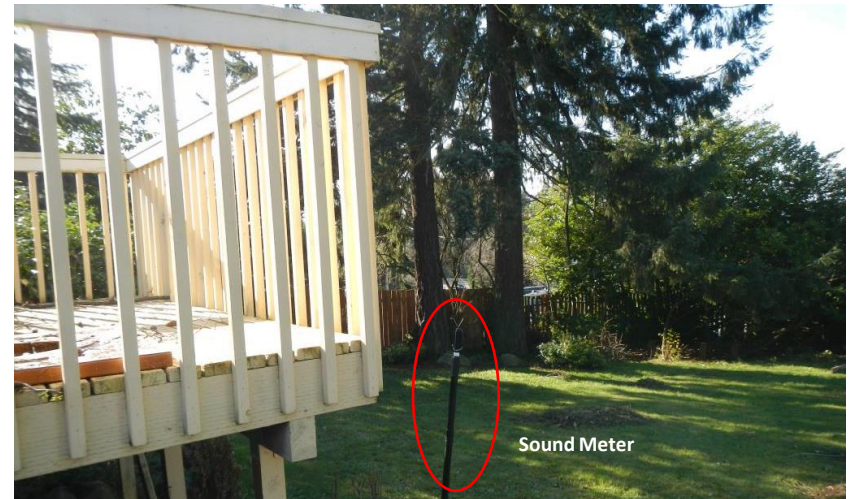


Photo 4: Looking southwest

Monitoring Location M-37  
 22323 30th Ave S.  
 Des Moines, Washington



Michael Minor & Associates  
 Sound.Vibration.Air  
 Portland, Oregon

Figure 35  
 Noise Monitoring Locations  
 Federal Way Extension



Photo 1: Aerial View



Photo 2: Looking northwest toward Access Condos



Photo 3: Looking south



Photo 4: Looking east

Monitoring Location M-38  
 22700 28th Ave. S. (Access Condominiums)  
 Des Moines, Washington



Michael Minor & Associates  
 Sound.Vibration.Air  
 Portland, Oregon

Figure 36  
 Noise Monitoring Locations  
 Federal Way Extension



Photo 1: Aerial View



Photo 2: Looking east toward Pacific Hwy



Photo 3: Looking north



Photo 4: Looking west

Monitoring Location M-39  
22855 Pacific Hwy S.  
Des Moines, Washington



Michael Minor & Associates  
Sound.Vibration.Air  
Portland, Oregon

Figure 37  
Noise Monitoring Locations  
Federal Way Extension





Photo 1: Aerial View



Photo 2: Looking west



Photo 3: Looking southeast



Photo 4: Looking northwest

Monitoring Location M-40 East – Watermark Cove  
 22831 30<sup>th</sup> Ave.  
 Des Moines, Washington



Michael Minor & Associates  
 Sound.Vibration.Air  
 Portland, Oregon

Figure 38  
 Noise Monitoring Locations  
 Federal Way Extension

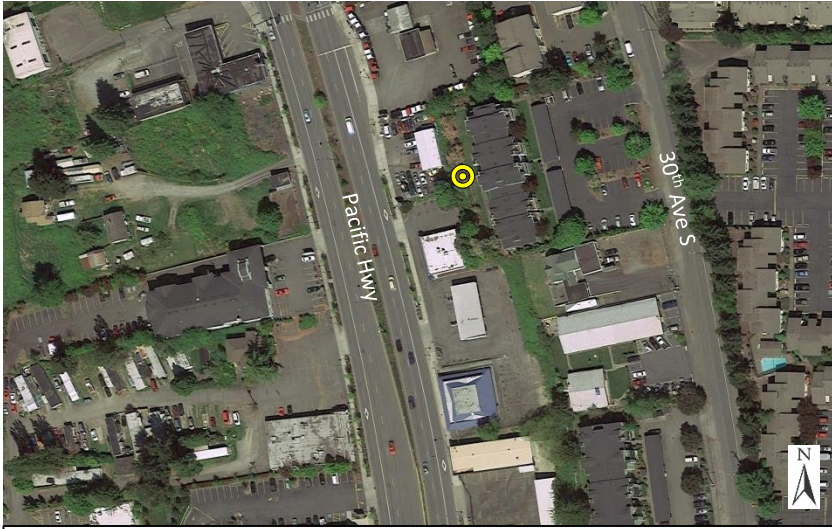


Photo 1: Aerial View



Photo 2: Looking north

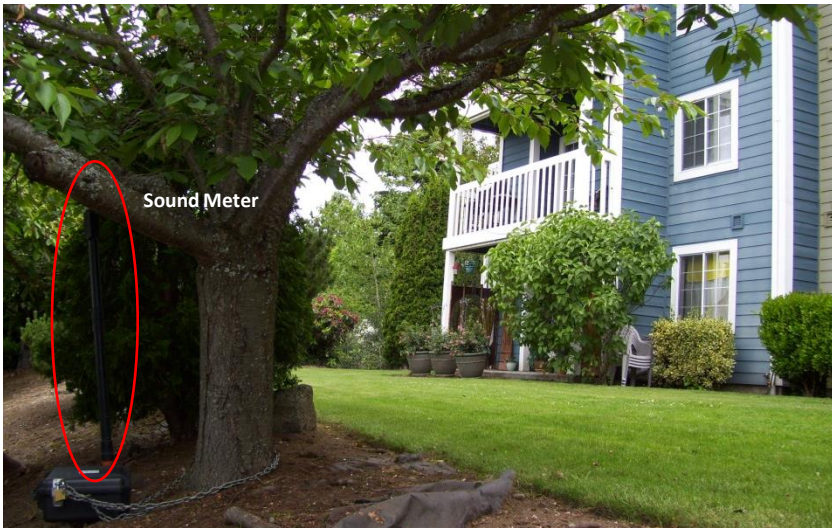


Photo 3: Looking northeast



Photo 4: Looking west at SR 99

Monitoring Location M-40 West – Watermark Cove  
 22831 30<sup>th</sup> Ave.  
 Des Moines, Washington



Michael Minor & Associates  
 Sound.Vibration.Air  
 Portland, Oregon

Figure 39  
 Noise Monitoring Locations  
 Federal Way Extension



Photo 1: Aerial View



Photo 2: Looking southeast toward S 240th St.



Photo 3: Looking toward the corner of S 240th and Pacific Hwy



Photo 4: Looking north

Monitoring Location M-41  
 2400 S 240th St. (Highline Community College)  
 Des Moines, Washington



Michael Minor & Associates  
 Sound.Vibration.Air  
 Portland, Oregon

Figure 40  
 Noise Monitoring Locations  
 Federal Way Extension



Photo 1: Aerial View



Photo 2: Looking west toward Lolani Apartments



Photo 3: Looking west



Photo 4: Looking east

Monitoring Location M-42  
 24415 Pacific Hwy. S. (Iolani Apartments)  
 Kent, Washington



Michael Minor & Associates  
 Sound.Vibration.Air  
 Portland, Oregon

Figure 41  
 Noise Monitoring Locations  
 Federal Way Extension

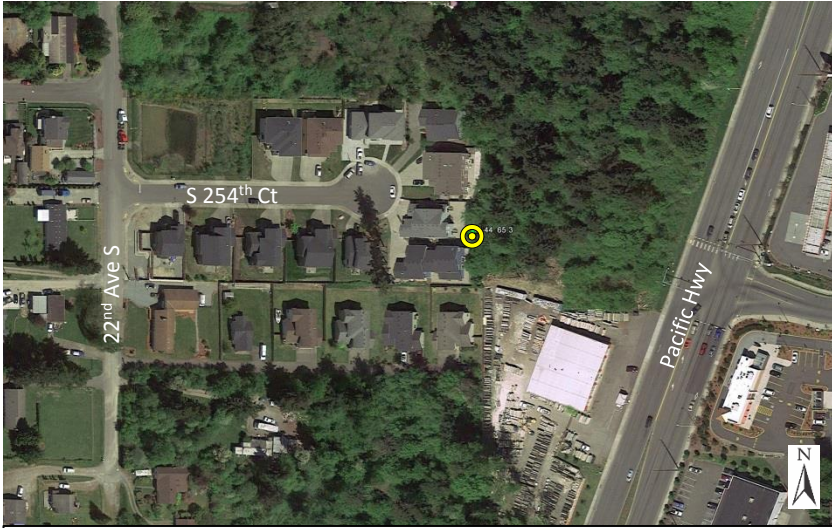


Photo 1: Aerial View



Photo 2: Looking north



Photo 3: Looking southwest



Photo 4: Looking west

Monitoring Location M-44  
 2315 S 254th Ct.  
 Des Moines, Washington



Michael Minor & Associates  
 Sound.Vibration.Air  
 Portland, Oregon

Figure 42  
 Noise Monitoring Locations  
 Federal Way Extension