



Photo 1: Aerial View



Photo 2: Looking west



Photo 3: Looking north

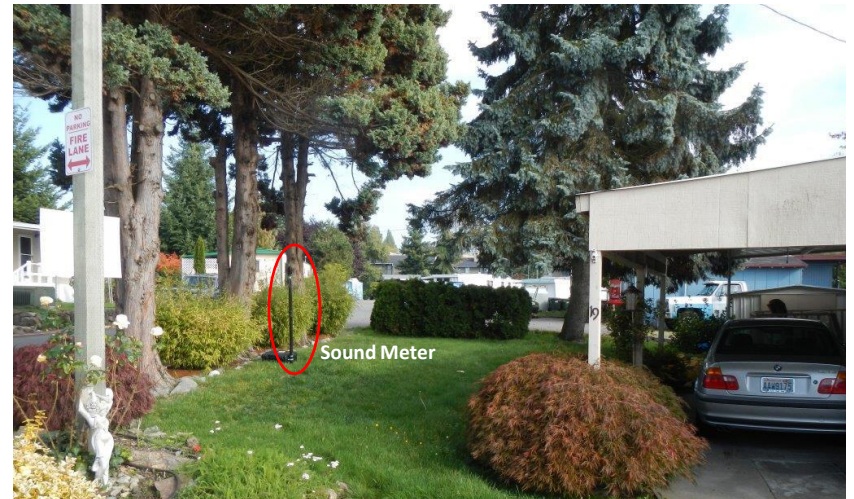


Photo 4: Looking east

Monitoring Location M-45
2424 S 260th St. (West Hill Mobile Manor)
Kent, Washington



Michael Minor & Associates
Sound.Vibration.Air
Portland, Oregon

Figure 43
Noise Monitoring Locations
Federal Way Extension



Photo 1: Aerial View



Photo 2: Looking east towards SR 99



Photo 3: Looking southwest



Photo 4: Looking northwest at 260th Street

Monitoring Location M-46
2211 S 260th Street
Des Moines, Washington



Michael Minor & Associates
Sound.Vibration.Air
Portland, Oregon

Figure 44
Noise Monitoring Locations
Federal Way Extension



Photo 1: Aerial View



Photo 2: Looking north



Photo 3: Looking south



Photo 4: Looking west

Monitoring Location M-47
26421 Pacific Hwy. S. (Defunct Church)
Des Moines, Washington



Michael Minor & Associates
Sound.Vibration.Air
Portland, Oregon

Figure 45
Noise Monitoring Locations
Federal Way Extension

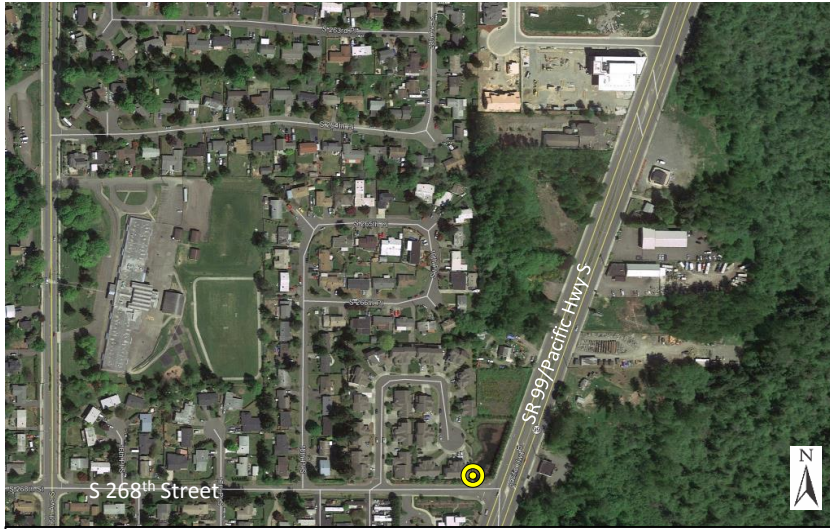


Photo 1: Aerial View



Photo 2: Looking south across S 268th Street at the Woodmont Library



Photo 3: Looking west



Photo 4: Looking south towards SR 99

Monitoring Location M-48
26636 19th Ave. S.
Des Moines, Washington



Michael Minor & Associates
Sound.Vibration.Air
Portland, Oregon

Figure 46
Noise Monitoring Locations
Federal Way Extension

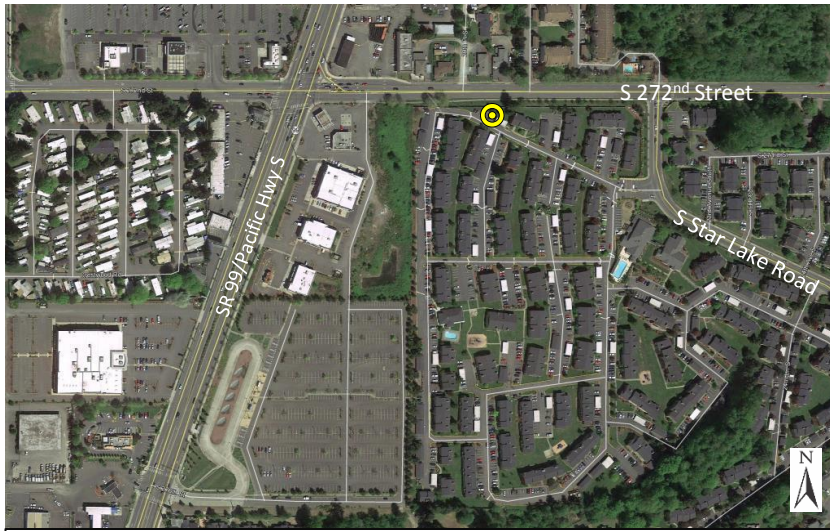


Photo 1: Aerial View



Photo 2: Looking west down S 272nd Street



Photo 3: Looking east towards S Star Lake Road



Photo 4: Looking south towards the interior of the apartment complex

Monitoring Location M-49 North
2211 S. Star Lake Rd. (Club Palisades Apartments
North End) Federal Way, Washington



Michael Minor & Associates
Sound.Vibration.Air
Portland, Oregon

Figure 47
Noise Monitoring Locations
Federal Way Extension

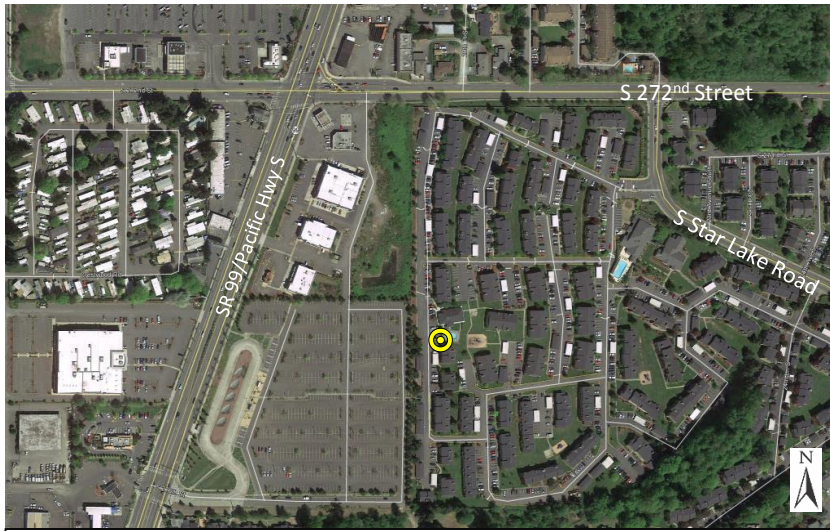


Photo 1: Aerial View



Photo 2: Looking east towards the interior of the apartment complex

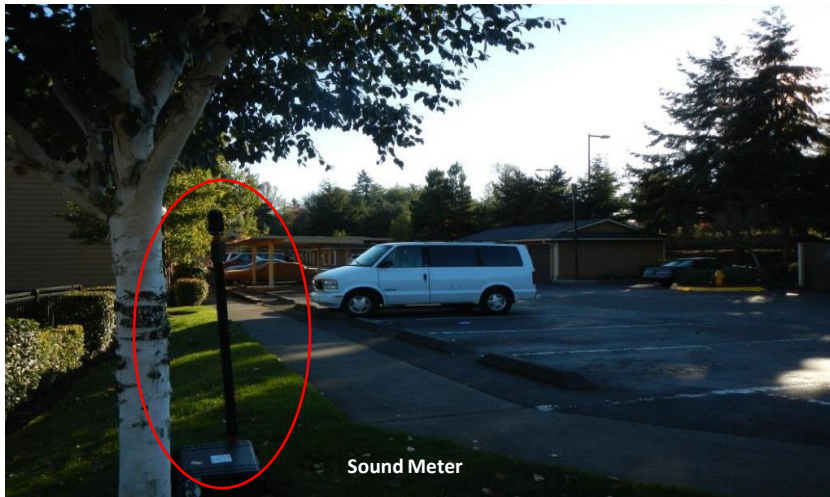


Photo 3: Looking south



Photo 4: Looking north

Monitoring Location M-49 Central
2211 S. Star Lake Rd. (Club Palisades Apartments
Pool Area) Federal Way, Washington



Michael Minor & Associates
Sound.Vibration.Air
Portland, Oregon

Figure 48
Noise Monitoring Locations
Federal Way Extension

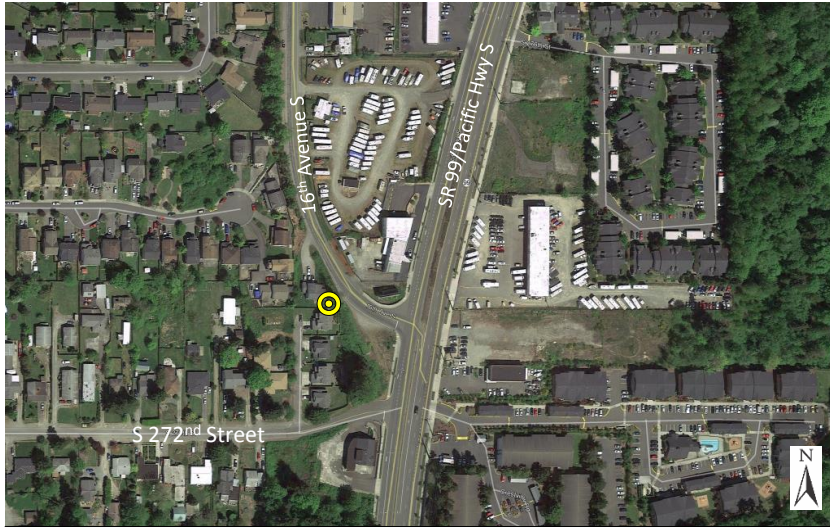


Photo 1: Aerial View



Photo 2: Looking north towards 16th Avenue S



Photo 3: Looking south



Photo 4: Looking northwest

Monitoring Location M-50
27805 16th Pl. S.
Des Moines, Washington



Michael Minor & Associates
Sound.Vibration.Air
Portland, Oregon

Figure 49
Noise Monitoring Locations
Federal Way Extension

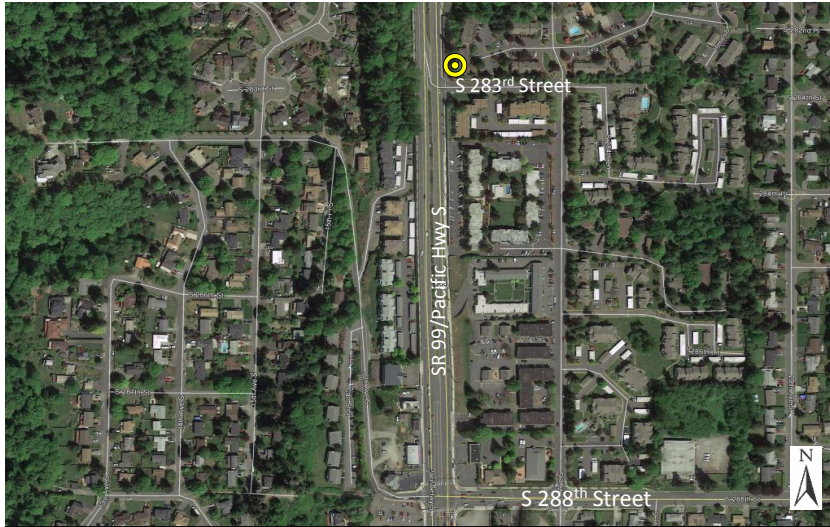


Photo 1: Aerial View



Photo 2: Looking southwest at SR 99



Photo 3: Looking south



Photo 4: Looking northeast

Monitoring Location M-51
28120 18th Ave. S. - Mariposa Apts.
Federal Way, Washington



Michael Minor & Associates
Sound.Vibration.Air
Portland, Oregon

Figure 50
Noise Monitoring Locations
Federal Way Extension

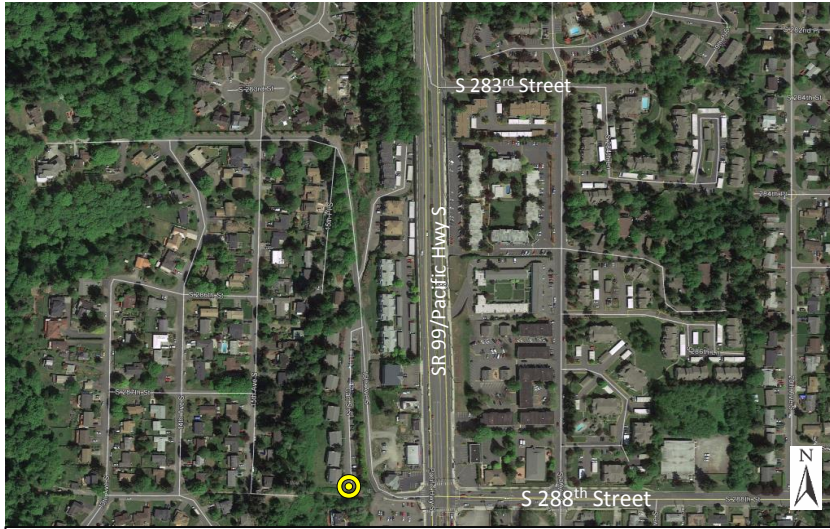


Photo 1: Aerial View



Photo 2: Looking southwest



Photo 3: Looking northwest



Photo 4: Looking north

Monitoring Location M-52
28723 16th Ave. S., Bldg. G
Federal Way, Washington



Michael Minor & Associates
Sound.Vibration.Air
Portland, Oregon

Figure 51
Noise Monitoring Locations
Federal Way Extension



Photo 1: Aerial View



Photo 2: Looking east



Photo 3: Looking west



Photo 4: Looking west at SR 99 over the fence at the residence

Monitoring Location M-53
29353 18th Ave. S.
Federal Way, Washington



Michael Minor & Associates
Sound.Vibration.Air
Portland, Oregon

Figure 52
Noise Monitoring Locations
Federal Way Extension

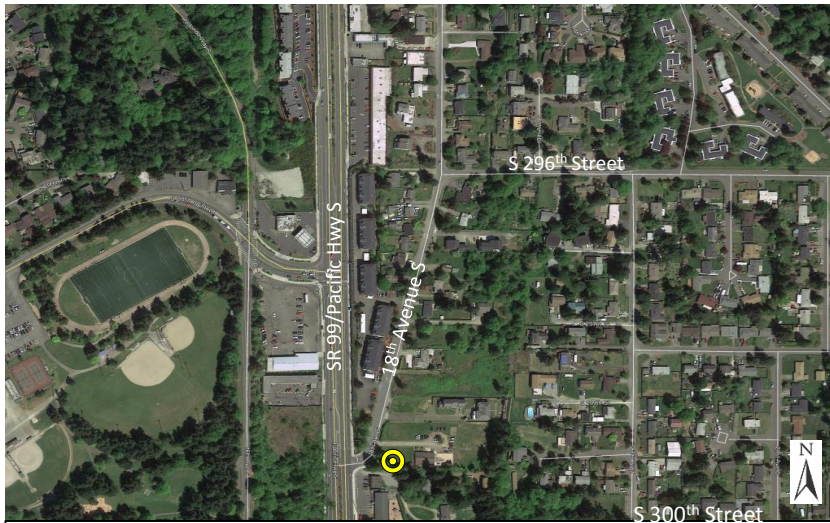


Photo 1: Aerial View



Photo 2: Looking west at SR 99



Photo 3: Looking north at 18th Avenue S



Photo 4: Looking east

Monitoring Location M-54
29850 18th Ave. S.
Federal Way, Washington



Michael Minor & Associates
Sound.Vibration.Air
Portland, Oregon

Figure 53
Noise Monitoring Locations
Federal Way Extension



Photo 1: Aerial View



Photo 2: Looking west at hotel entrance



Photo 3: Looking east at SR 99



Photo 4: Looking north

Monitoring Location M-55
29815 Pacific Hwy. S. (Federal Way Motel)
Federal Way, Washington



Michael Minor & Associates
Sound.Vibration.Air
Portland, Oregon

Figure 54
Noise Monitoring Locations
Federal Way Extension



Photo 1: Aerial View



Photo 2: Looking north



Photo 3: Looking east toward 16th Ave S.



Photo 4: Looking south

Monitoring Location M-56
1472 S 303rd St.
Federal Way, Washington



Michael Minor & Associates
Sound.Vibration.Air
Portland, Oregon

Figure 55
Noise Monitoring Locations
Federal Way Extension



Photo 1: Aerial View



Photo 2: Looking east toward View at the Lake Apartments



Photo 3: Looking north



Photo 4: Looking south

Monitoring Location M-57
30602 Pacific Hwy. S. (View at the Lake Apartments)
Federal Way, Washington



Michael Minor & Associates
Sound.Vibration.Air
Portland, Oregon

Figure 56
Noise Monitoring Locations
Federal Way Extension



Photo 1: Aerial View



Photo 2: Looking east at SR99/Pacific Hwy.



Photo 3: Looking northeast at SR99/Pacific Hwy.



Photo 4: Looking south

Monitoring Location M-58
31031 Pacific Hwy. S. (Federal Way High School)
Federal Way, Washington



Michael Minor & Associates
Sound.Vibration.Air
Portland, Oregon

Figure 57
Noise Monitoring Locations
Federal Way Extension



Photo 1: Aerial View



Photo 2: Looking northwest



Photo 3: Looking east toward residence



Photo 4: Looking south toward S 312th St.

Monitoring Location M-59
1816 S 312th St.
Federal Way, Washington



Michael Minor & Associates
Sound.Vibration.Air
Portland, Oregon

Figure 58
Noise Monitoring Locations
Federal Way Extension

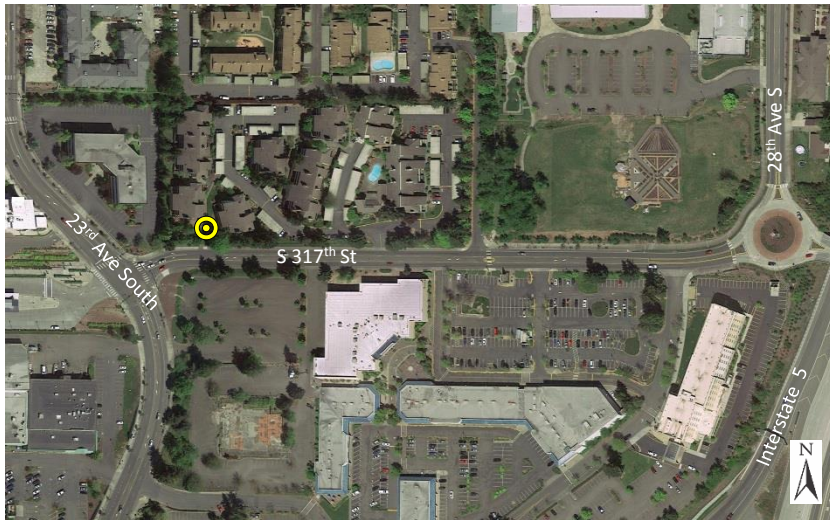


Photo 1: Aerial View



Photo 2: Looking southwest at S 317th St.



Photo 3: Looking northwest



Photo 4: Looking north across S 317th St.

Monitoring Location M-60
2502 S 317th St. (Chelsea Court Condominiums)
Federal Way, Washington



Michael Minor & Associates
Sound.Vibration.Air
Portland, Oregon

Figure 59
Noise Monitoring Locations
Federal Way Extension



Photo 1: Aerial View



Photo 2: Looking east at the Clarion Hotel



Photo 3: Looking south at the Clarion Hotel



Photo 4: Looking north at S 316th St.

Monitoring Location M-61
31611 20th Ave. S. (Clarion Hotel)
Federal Way, Washington



Michael Minor & Associates
Sound.Vibration.Air
Portland, Oregon

Figure 60
Noise Monitoring Locations
Federal Way Extension

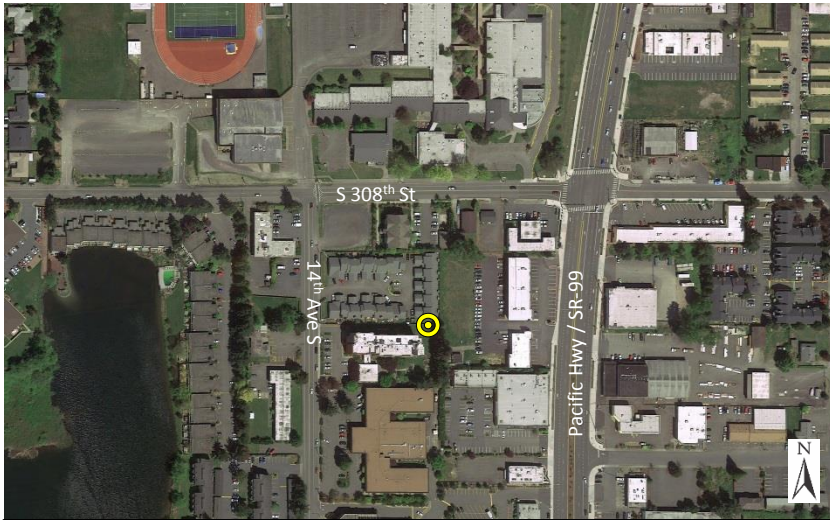


Photo 1: Aerial View



Photo 2: Looking east toward Pacific Hwy / SR-99



Photo 3: Looking southwest



Photo 4: Looking north

Monitoring Location M-62
1444 14th Ave. S. (Bellridge Condominiums)
Federal Way, Washington



Michael Minor & Associates
Sound.Vibration.Air
Portland, Oregon

Figure 61
Noise Monitoring Locations
Federal Way Extension

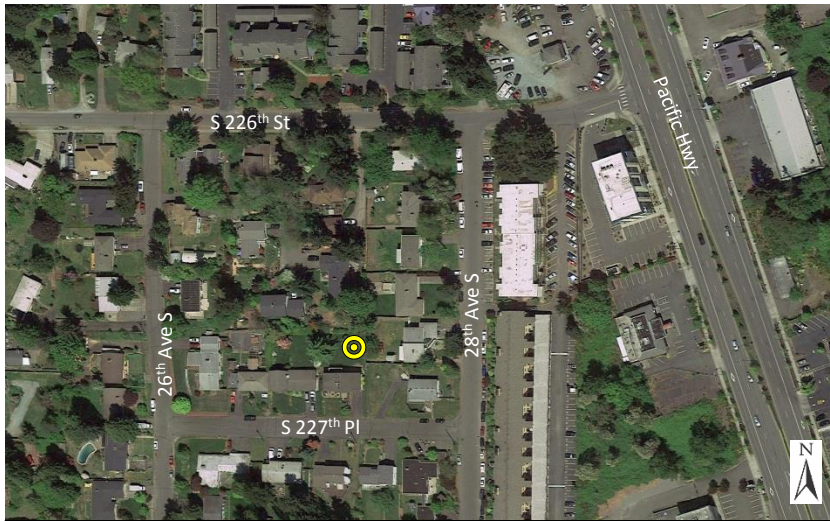


Photo 1: Aerial View

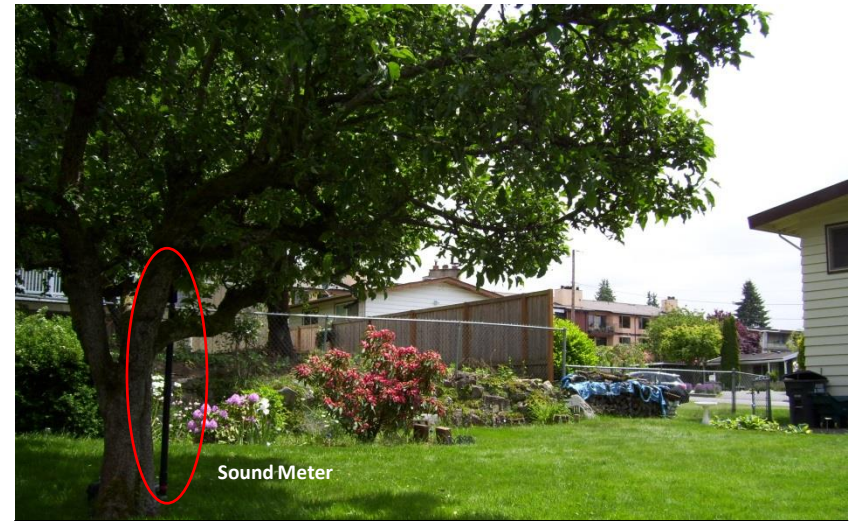


Photo 2: Looking southwest toward 28th Ave S.



Photo 3: Looking northwest

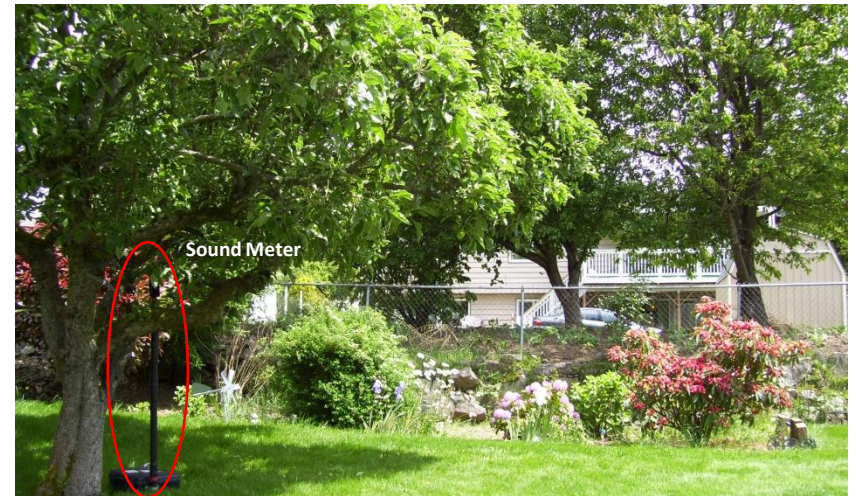


Photo 4: Looking east

Monitoring Location M-63
2670 S. 227th Pl
Des Moines, Washington



Michael Minor & Associates
Sound.Vibration.Air
Portland, Oregon

Figure 62
Noise Monitoring Locations
Federal Way Extension

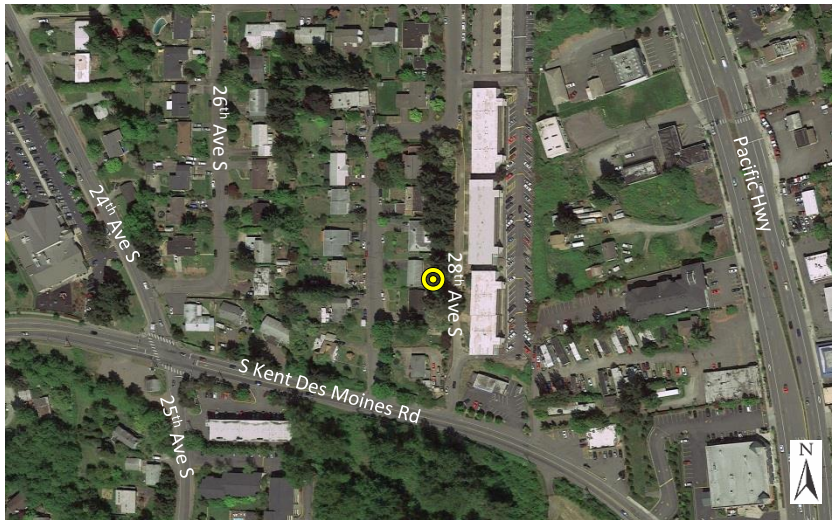


Photo 1: Aerial View



Photo 2: Looking southwest



Photo 3: Looking north



Photo 4: Looking east

Monitoring Location M-64
22902 27th Ave S.
Des Moines, Washington



Michael Minor & Associates
Sound.Vibration.Air
Portland, Oregon

Figure 63
Noise Monitoring Locations
Federal Way Extension

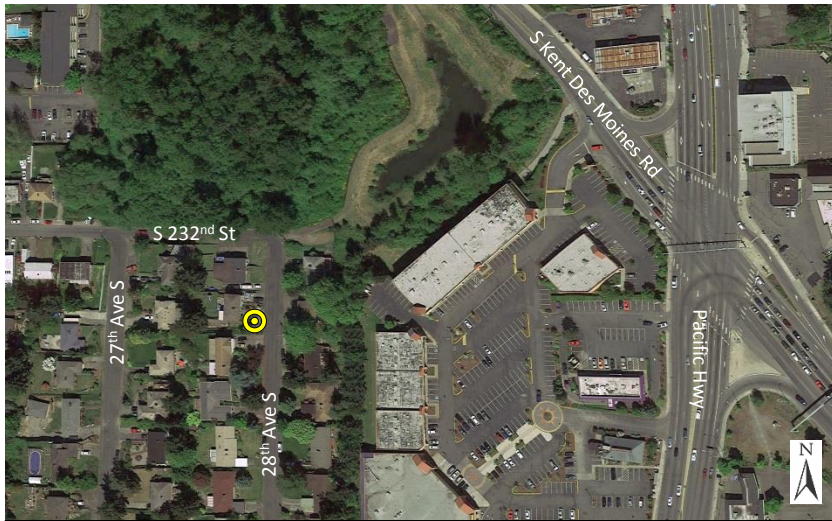


Photo 1: Aerial View



Photo 2: Looking northeast in the direction of S Kent Des Moines Rd



Photo 3: Looking southwest at 23219 28th Ave.



Photo 4: Looking northwest at residence

Monitoring Location M-65
23211 28th Ave.
Des Moines, Washington



Michael Minor & Associates
Sound.Vibration.Air
Portland, Oregon

Figure 64
Noise Monitoring Locations
Federal Way Extension

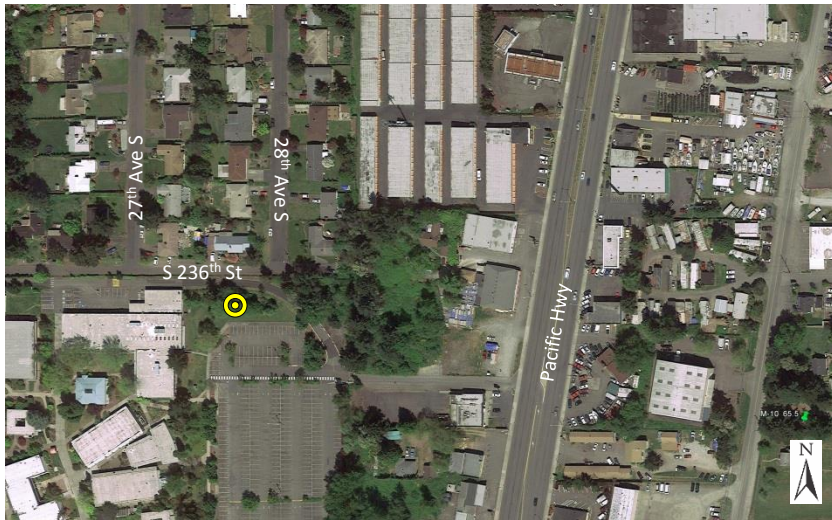


Photo 1: Aerial View



Photo 2: Looking west at Highline Community College

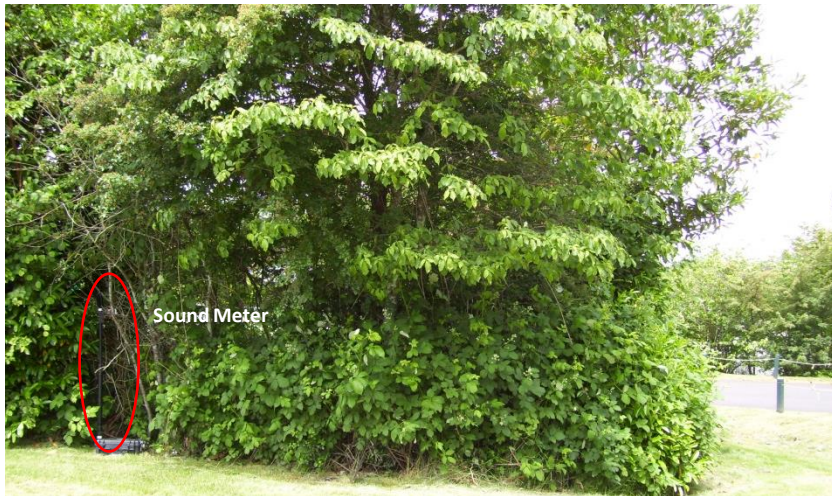


Photo 3: Looking north



Photo 4: Looking south

Monitoring Location M-66 East
Highline Community College (East Parking Lot)
Des Moines, Washington



Michael Minor & Associates
Sound.Vibration.Air
Portland, Oregon

Figure 65
Noise Monitoring Locations
Federal Way Extension