



Photo 1: Aerial View



Photo 2: Looking northwest



Photo 3: Looking west



Photo 4: Looking southeast

Monitoring Location M-66 West
Highline Community College (West Parking Lot)
Des Moines, Washington



Michael Minor & Associates
Sound.Vibration.Air
Portland, Oregon

Figure 66
Noise Monitoring Locations
Federal Way Extension



Photo 1: Aerial View



Photo 2: Looking northwest



Photo 3: Looking southwest



Photo 4: Looking southeast

Monitoring Location M-67
29045 15th Pl S.
Federal Way, Washington



Michael Minor & Associates
Sound.Vibration.Air
Portland, Oregon

Figure 67
Noise Monitoring Locations
Federal Way Extension

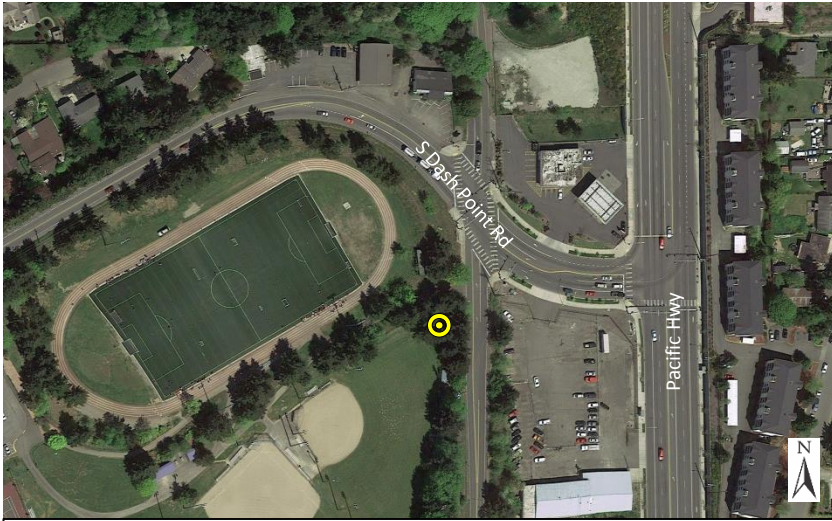


Photo 1: Aerial View



Photo 2: Looking southwest



Photo 3: Looking southeast



Photo 4: Looking northeast

Monitoring Location M-68
1600 SW Dash Point Rd. (Sacajawea Park)
Federal Way, Washington



Michael Minor & Associates
Sound.Vibration.Air
Portland, Oregon

Figure 68
Noise Monitoring Locations
Federal Way Extension

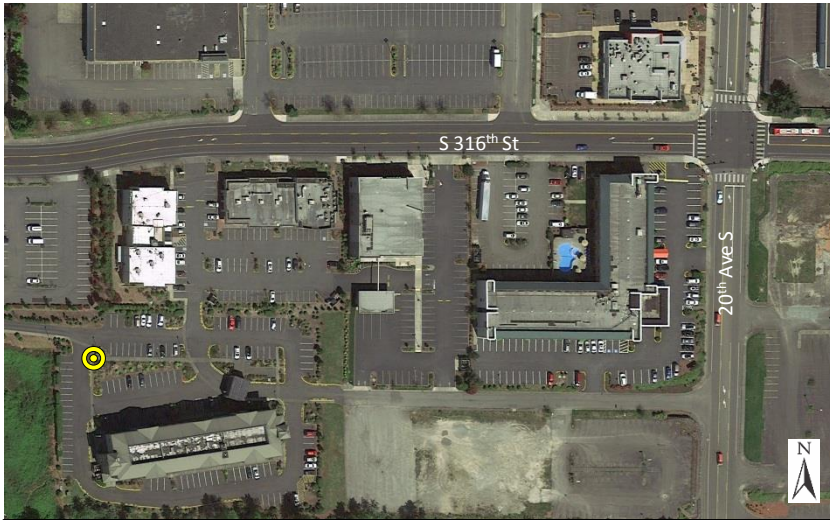


Photo 1: Aerial View



Photo 2: Looking south



Photo 3: Looking west



Photo 4: Looking northeast

Monitoring Location M-69
31622 Pacific Hwy. (Comfort Inn)
Federal Way, Washington



Michael Minor & Associates
Sound.Vibration.Air
Portland, Oregon

Figure 69
Noise Monitoring Locations
Federal Way Extension



Photo 1: Aerial View



Photo 2: Looking southwest



Photo 3: Looking west



Photo 4: Looking east toward I-5

Monitoring Location M-70
2460 S 320th St. (Walkway between Hotels)
Federal Way, Washington



Michael Minor & Associates
Sound.Vibration.Air
Portland, Oregon

Figure 70
Noise Monitoring Locations
Federal Way Extension

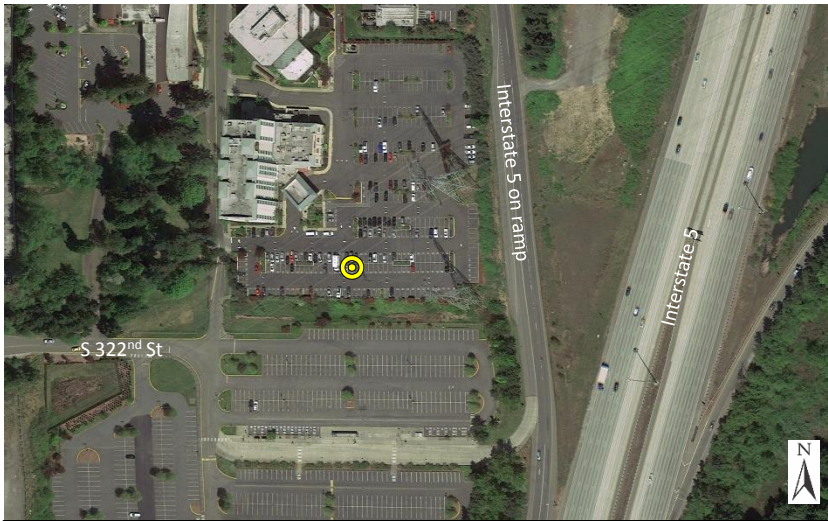


Photo 1: Aerial View



Photo 2: Looking northwest

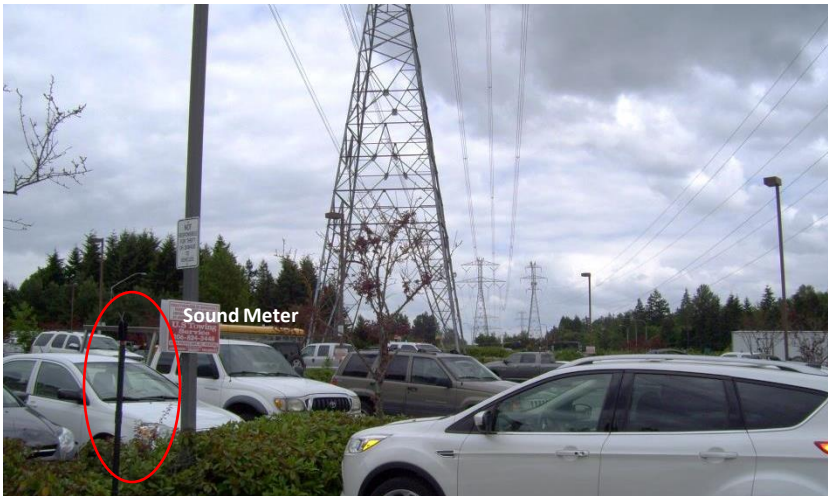


Photo 3: Looking northeast



Photo 4: Looking southeast

Monitoring Location M-71
32124 25th Ave. (Best Western Plus Evergreen
Inn & Suites) Federal Way, Washington



Michael Minor & Associates
Sound.Vibration.Air
Portland, Oregon

Figure 71
Noise Monitoring Locations
Federal Way Extension



Photo 1: Aerial View



Photo 2: Looking northwest



Photo 3: Looking north



Photo 4: Looking southeast toward I-5

Monitoring Location M-72
2101 S 324th St. (Belmor Park)
Federal Way, Washington



Michael Minor & Associates
Sound.Vibration.Air
Portland, Oregon

Figure 72
Noise Monitoring Locations
Federal Way Extension