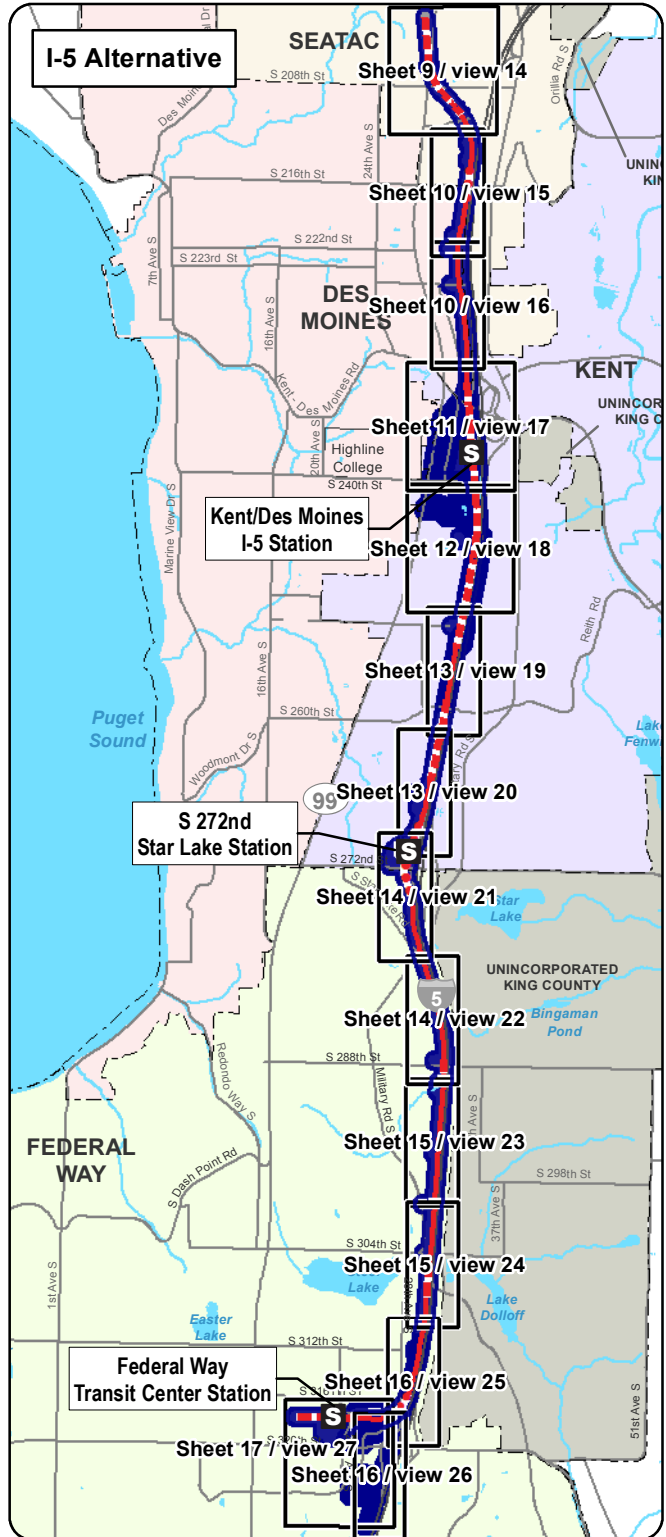
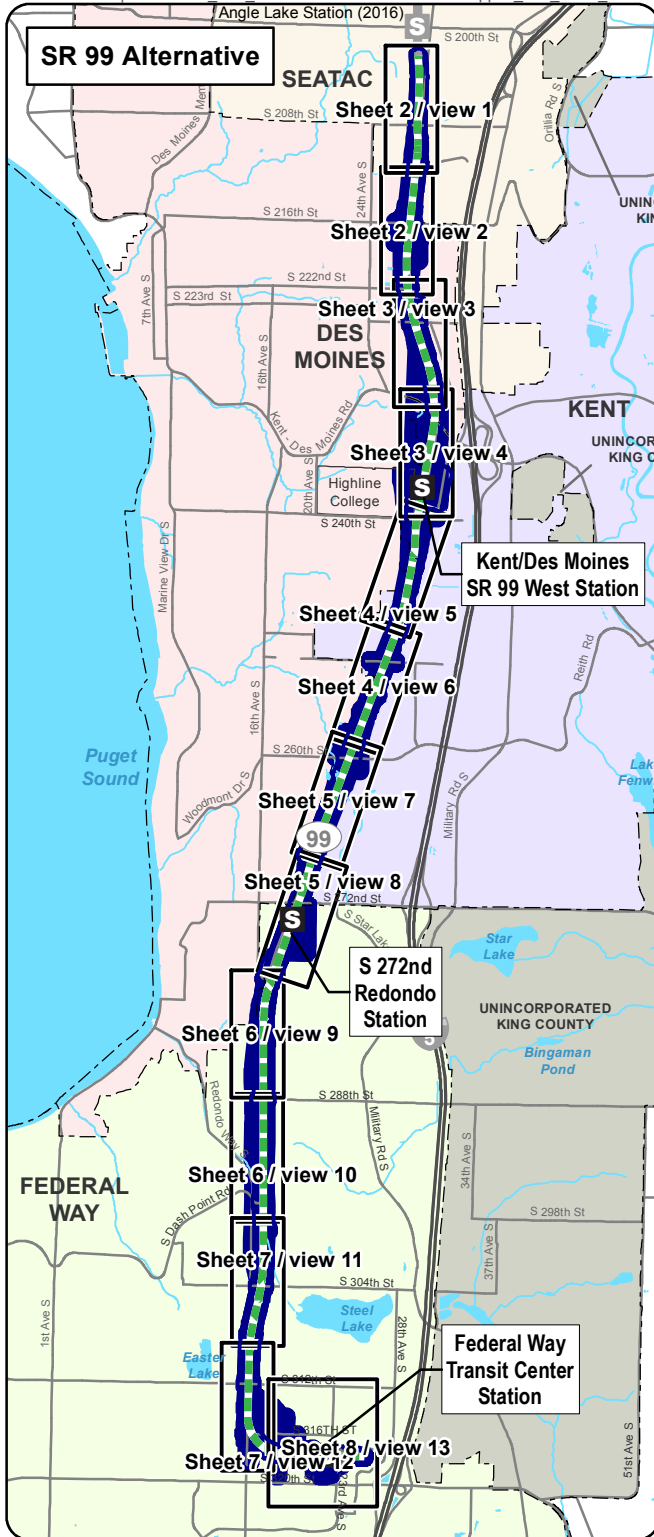


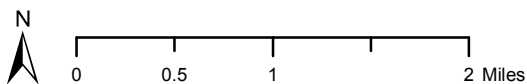
Appendix C
Mapped Locations of All Parcels Surveyed for Built
Environment Resources

This page intentionally left blank.

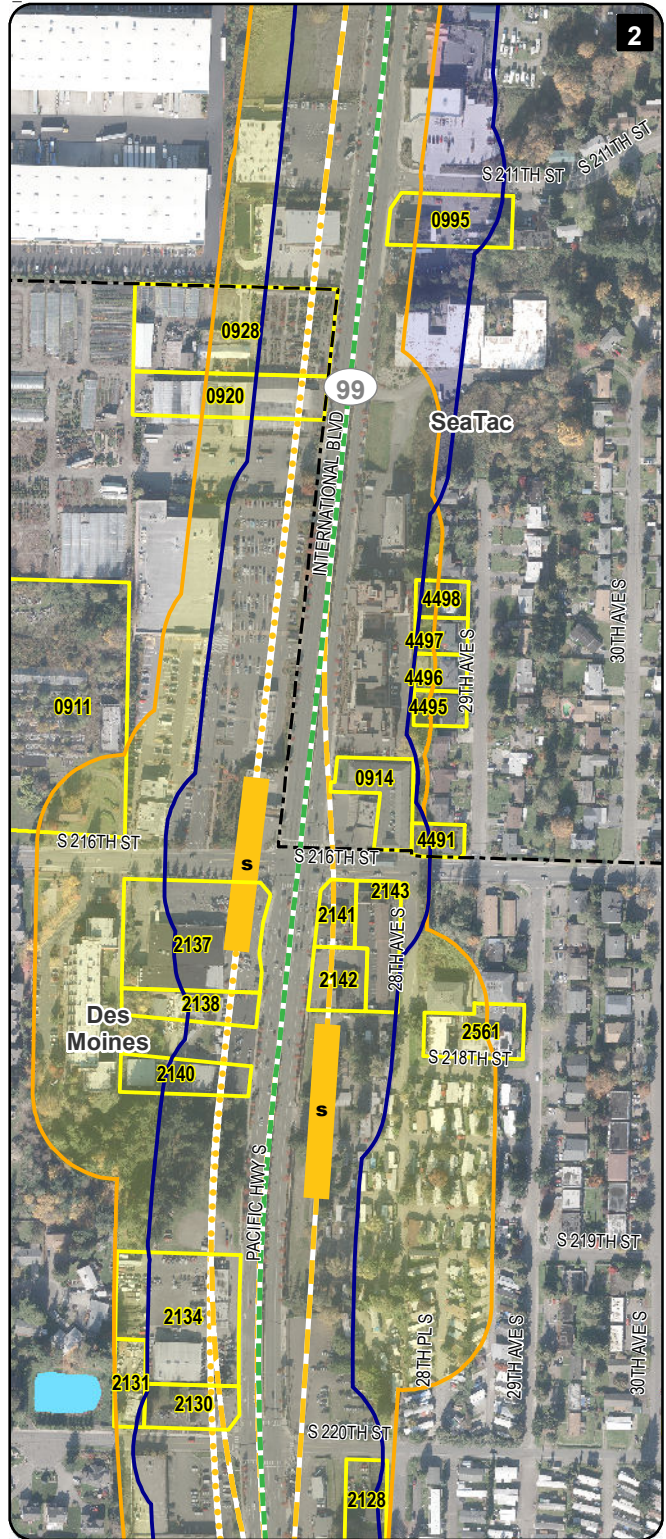
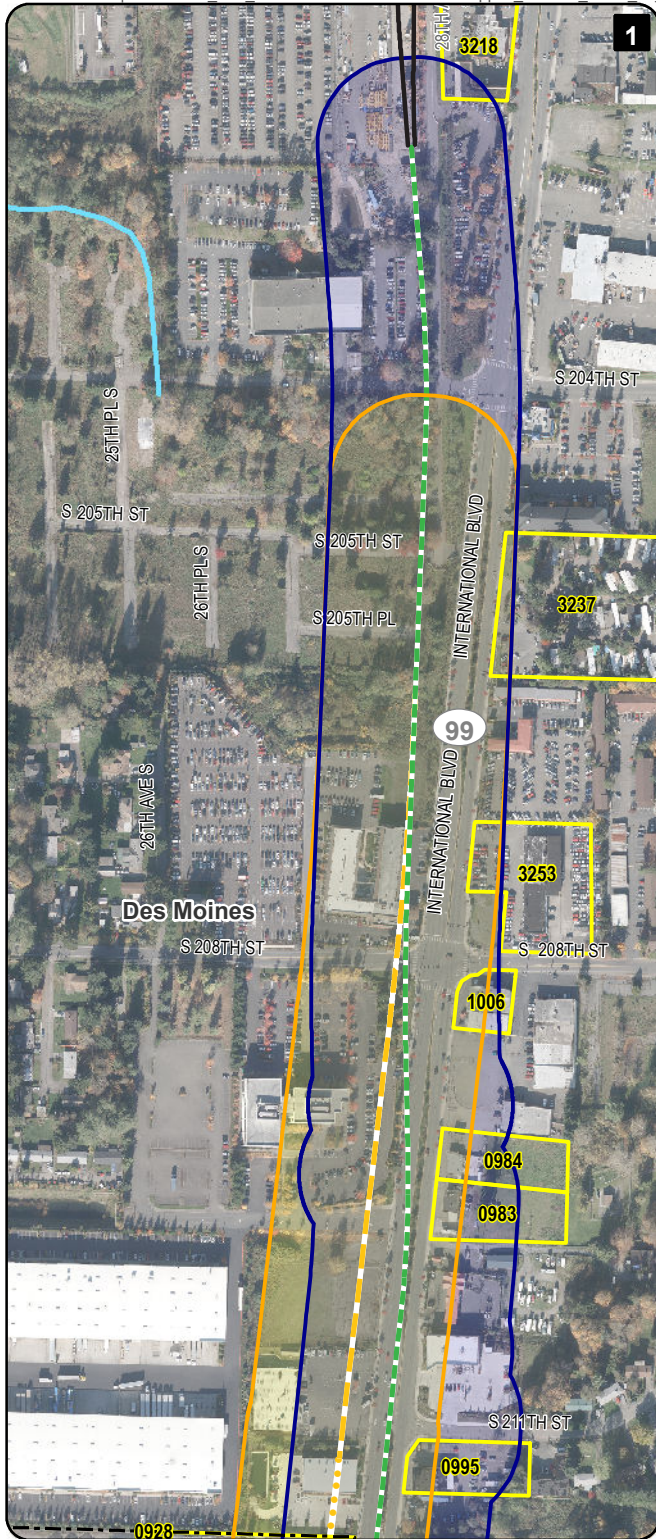


SR 99 Alternative	I-5 Alternative	S Station	■ APE (Area of Potential Effects)	--- City Boundary
--- Elevated	--- Elevated			— Street
	— At-Grade			— Stream
	••• Trench			□ View Area

Data Sources: King County, Cities of Des Moines, Federal Way, Kent, SeaTac (2013).



Appendix C: 1 of 19 Mapped Locations of All Parcels Surveyed for Built Environment Resources SR 99 and I-5 Alternative Index
 Federal Way Link Extension

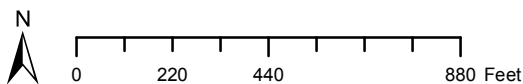


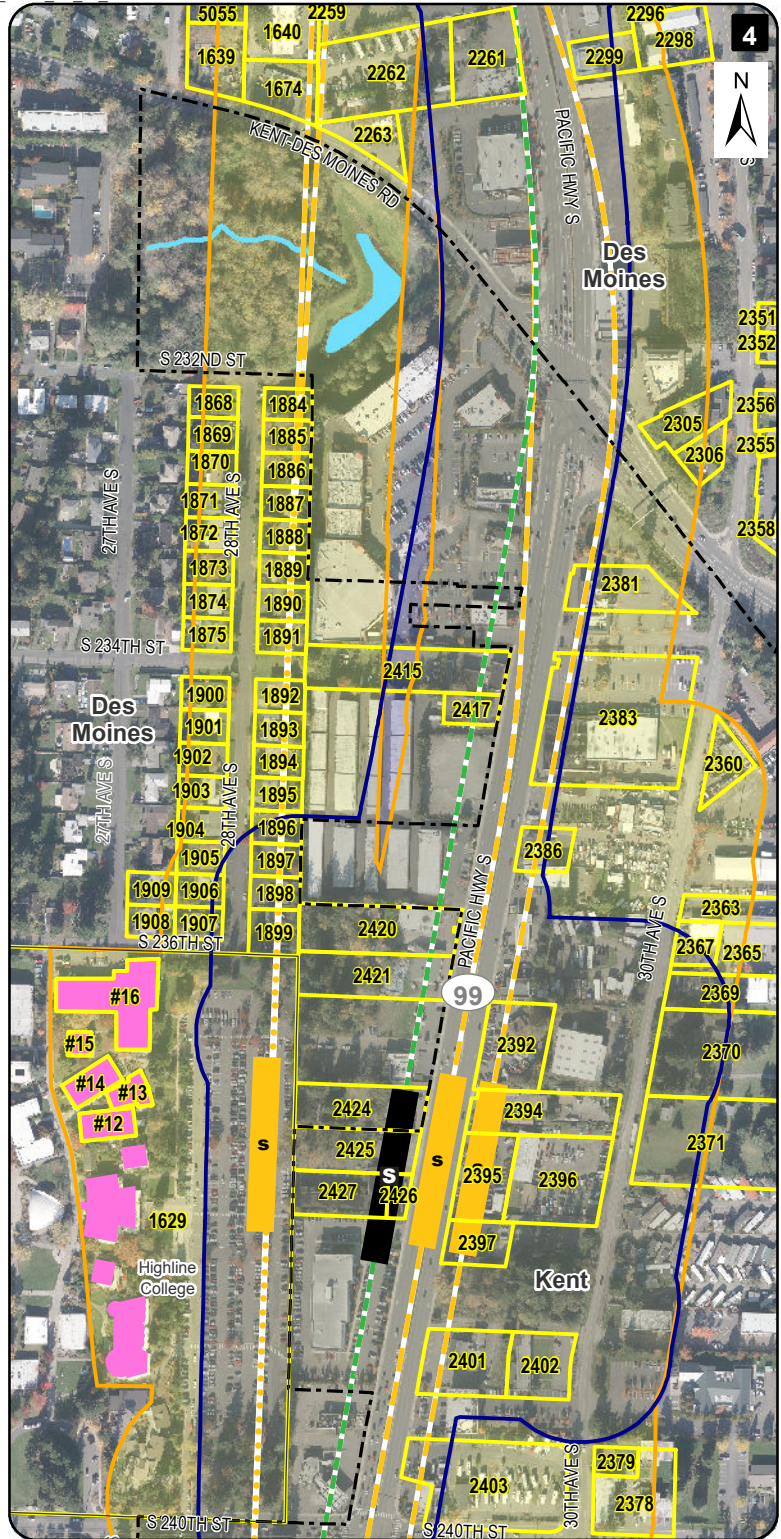
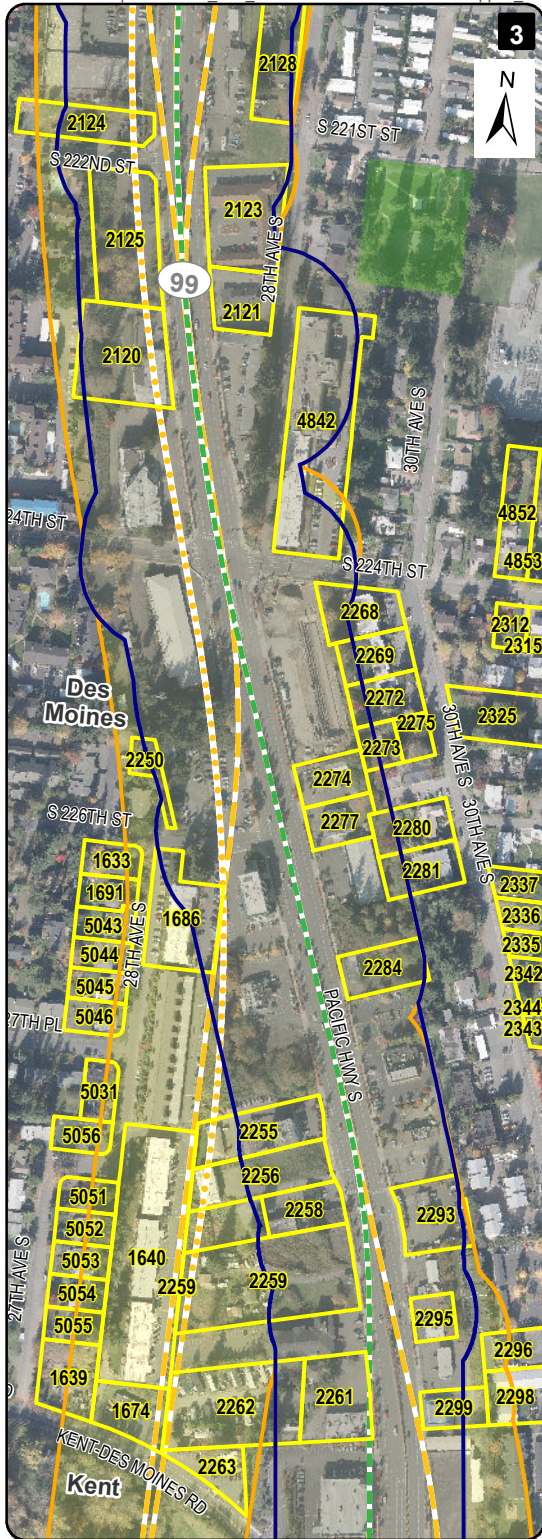
LEGEND

SR 99 Alternative Options	Surveyed Property	City Boundary
Elevated	NRHP-Eligible Property	Stream
Station	APE for Alternative (Area of Potential Effects)	Waterbody
Elevated	APE for Options (Area of Potential Effects)	Park / Open Space
At-Grade		
Trench		
Station		

Data Sources: AeroMetric, King County, Cities of Des Moines, SeaTac (2013).

Appendix C: 2 of 19 Mapped Locations of All Parcels Surveyed for Built Environment Resources SR 99 Alternative and Options
Federal Way Link Extension



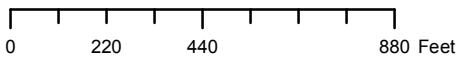


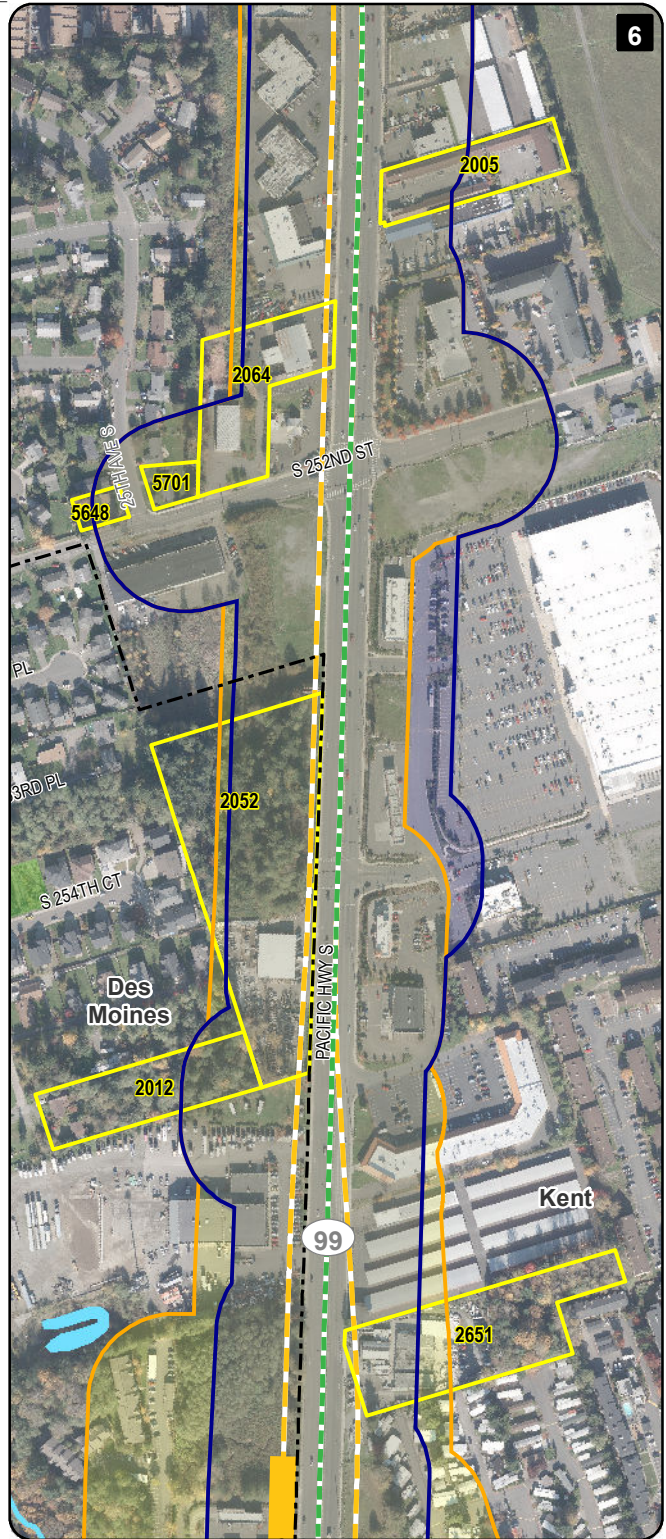
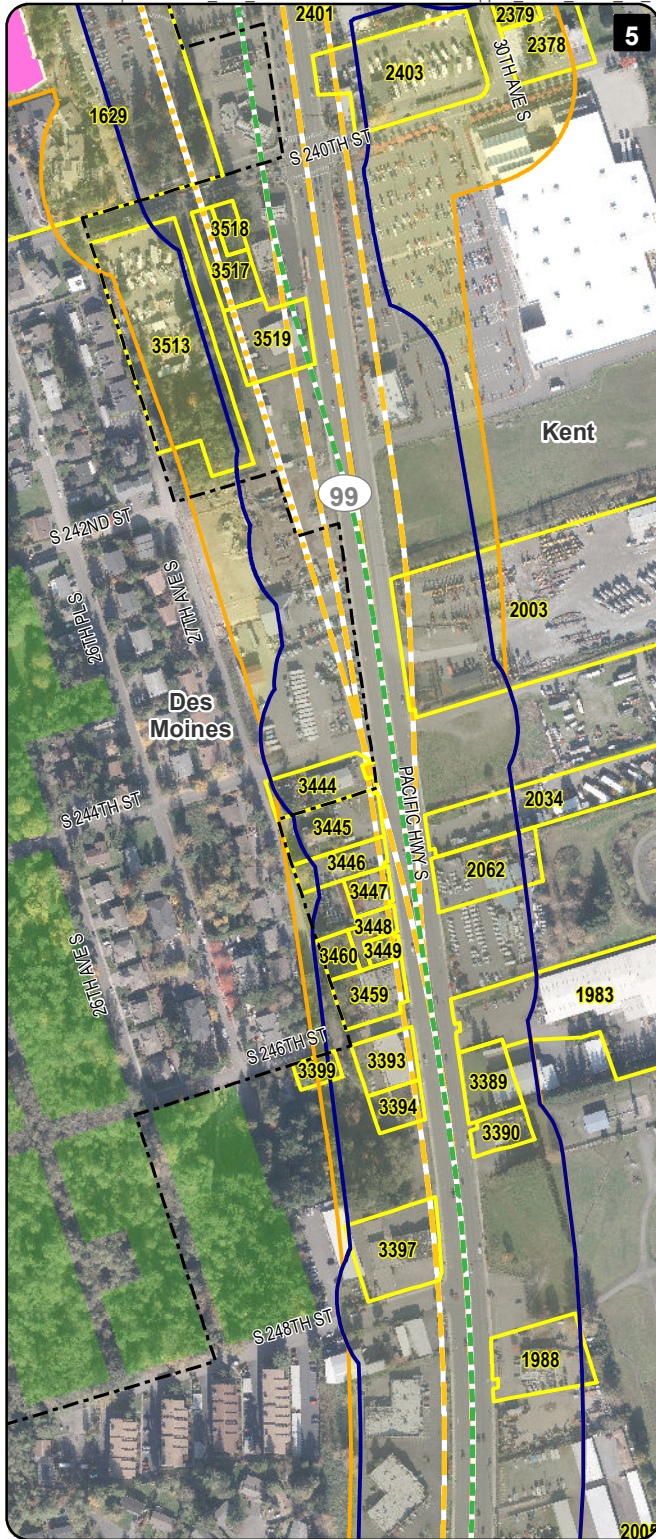
LEGEND

SR 99 Alternative	Options	Surveyed Property	City Boundary
Elevated	Elevated	NRHP-Eligible Property	Stream
At-Grade	At-Grade	APE for Alternative (Area of Potential Effects)	Waterbody
Station	Trench	APE for Options (Area of Potential Effects)	Park / Open Space
	Station		

Data Sources: AeroMetric, King County, Cities of Des Moines, Kent (2013).

Appendix C: 3 of 19 Mapped Locations of All Parcels Surveyed for Built Environment Resources SR 99 Alternative and Options
Federal Way Link Extension

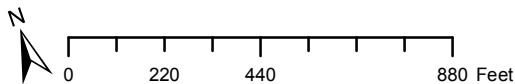




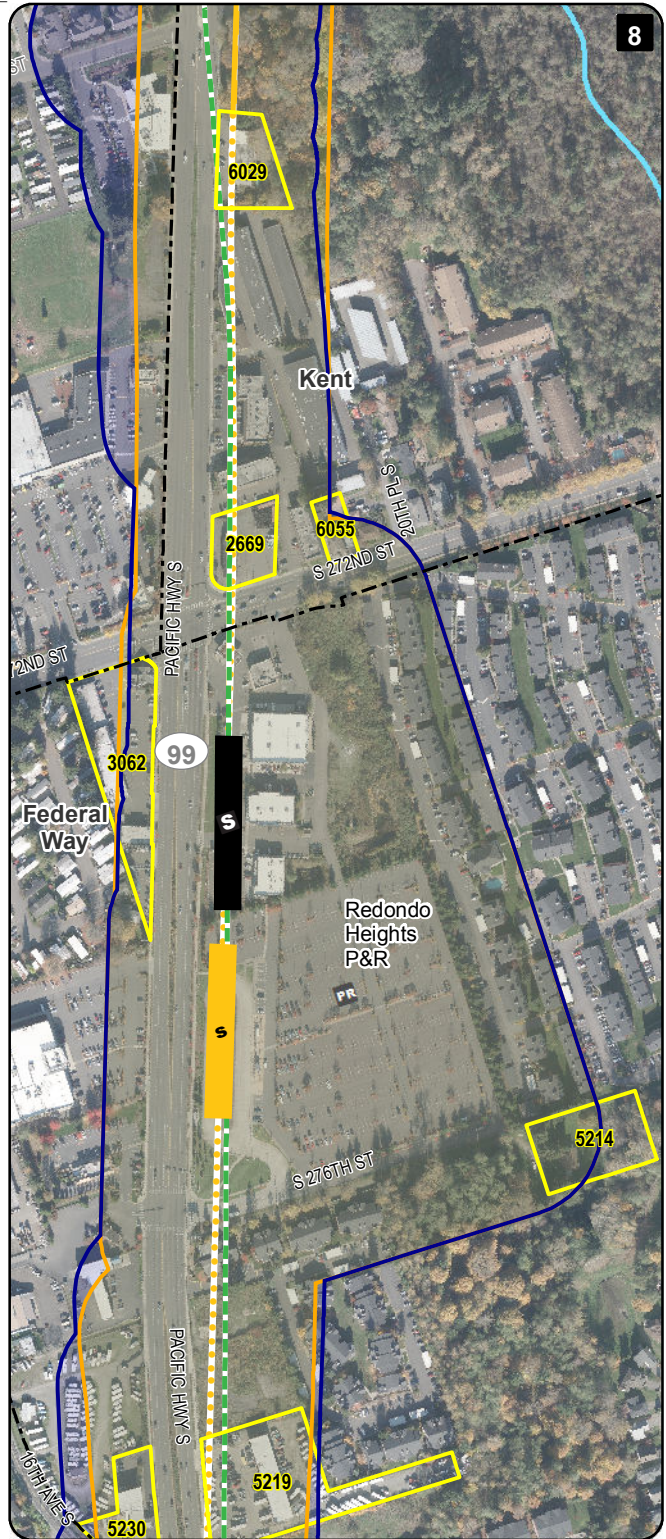
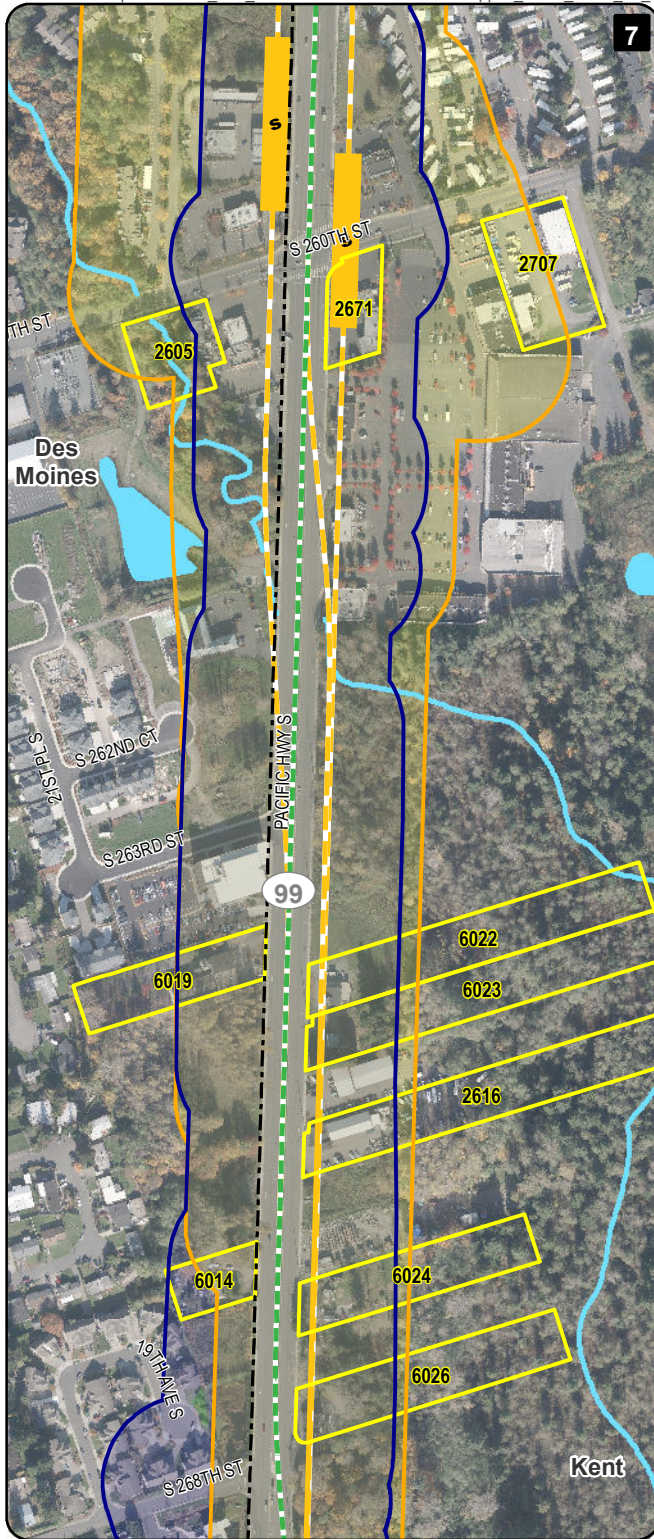
LEGEND

SR 99 Alternative Options	Surveyed Property	City Boundary
Elevated	Elevated	Stream
Station	NRHP-Eligible Property	Waterbody
At-Grade	APE for Alternative (Area of Potential Effects)	Park / Open Space
Trench	APE for Options (Area of Potential Effects)	
Station		

Data Sources: AeroMetric, King County, Cities of Des Moines, Kent (2013).



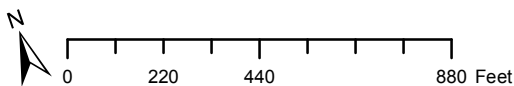
Appendix C: 4 of 19 Mapped Locations of All Parcels Surveyed for Built Environment Resources SR 99 Alternative and Options
Federal Way Link Extension



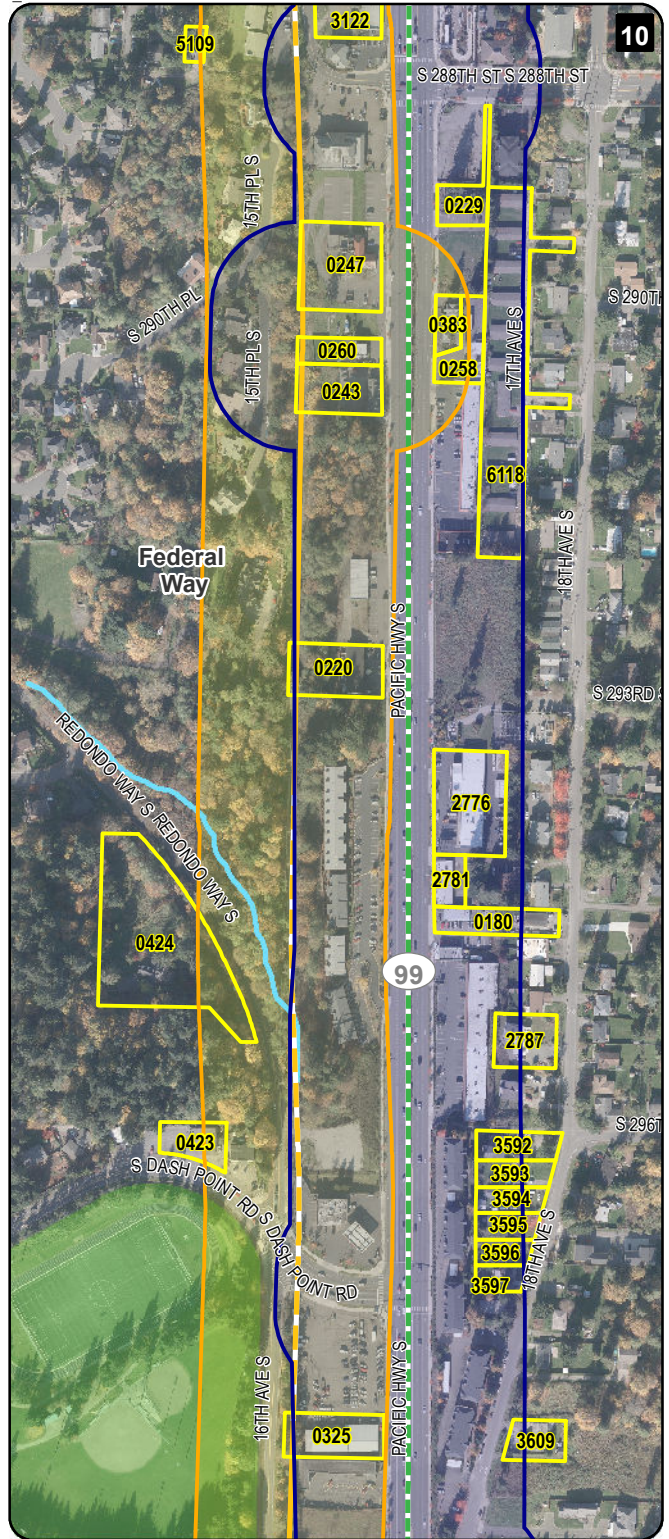
LEGEND

SR 99 Alternative Options	Surveyed Property	City Boundary
Elevated	Elevated	Stream
Station	NRHP-Eligible Property	Waterbody
At-Grade	APE for Alternative (Area of Potential Effects)	Park / Open Space
Trench	APE for Options (Area of Potential Effects)	
Station		

Data Sources: AeroMetric, King County, Cities of Des Moines, Federal Way, Kent (2013).



Appendix C: 5 of 19 Mapped Locations of All Parcels Surveyed for Built Environment Resources SR 99 Alternative and Options
Federal Way Link Extension

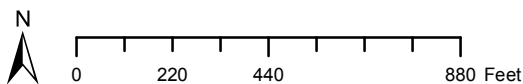


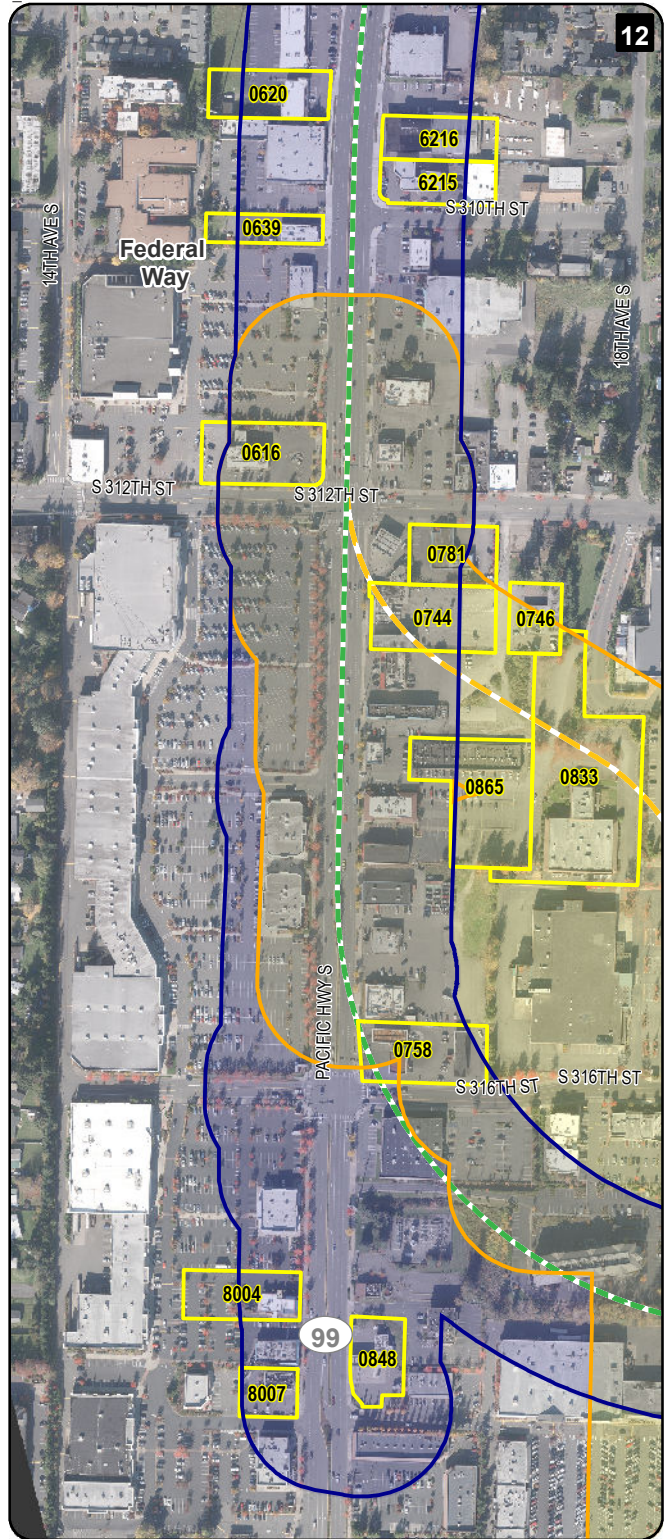
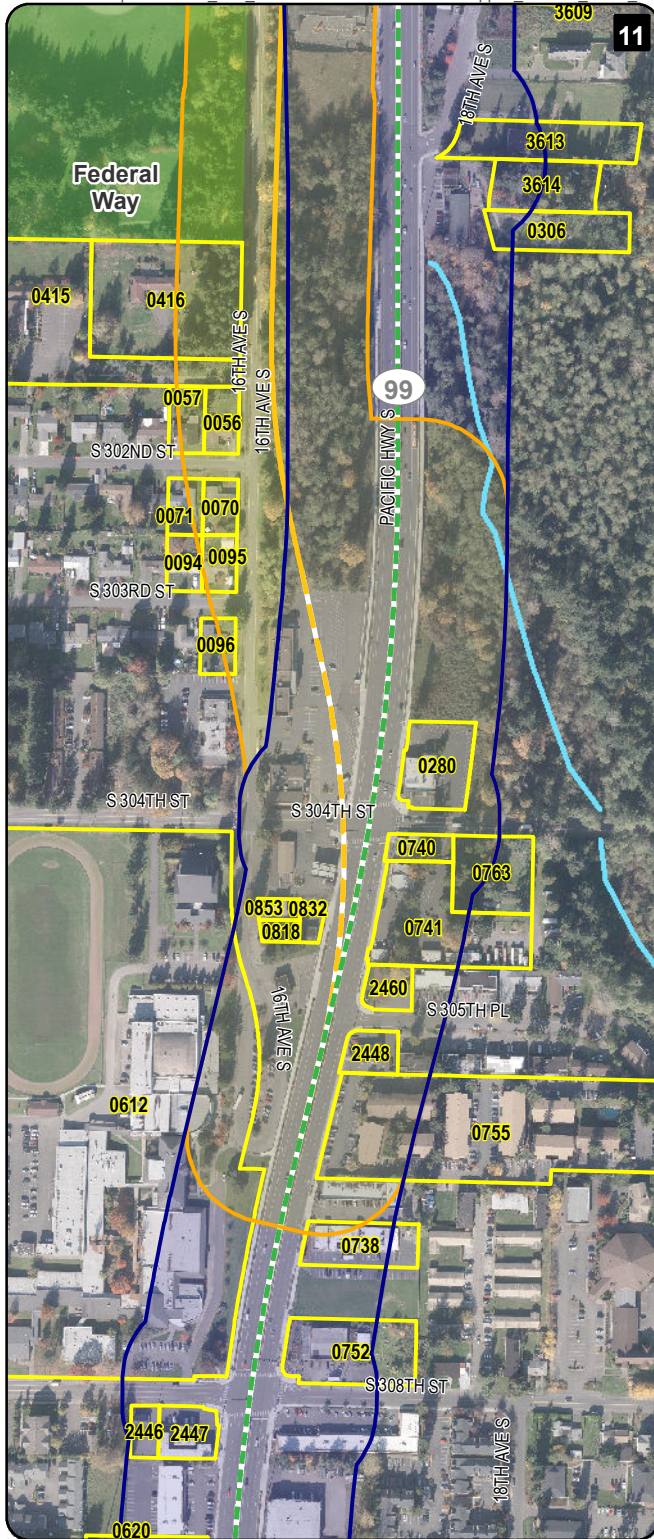
LEGEND

SR 99 Alternative Options			
--- Elevated	--- Elevated	Surveyed Property	--- City Boundary
Ⓢ Station	--- At-Grade	NRHP-Eligible Property	Stream
	--- Trench	APE for Alternative (Area of Potential Effects)	Waterbody
	Ⓢ Station	APE for Options (Area of Potential Effects)	Park / Open Space

Data Sources: AeroMetric, King County, Cities of Des Moines, Federal Way (2013).

Appendix C: 6 of 19 Mapped Locations of All Parcels Surveyed for Built Environment Resources SR 99 Alternative and Options Federal Way Link Extension



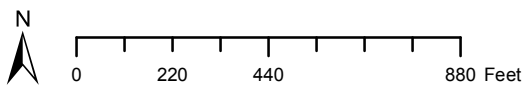


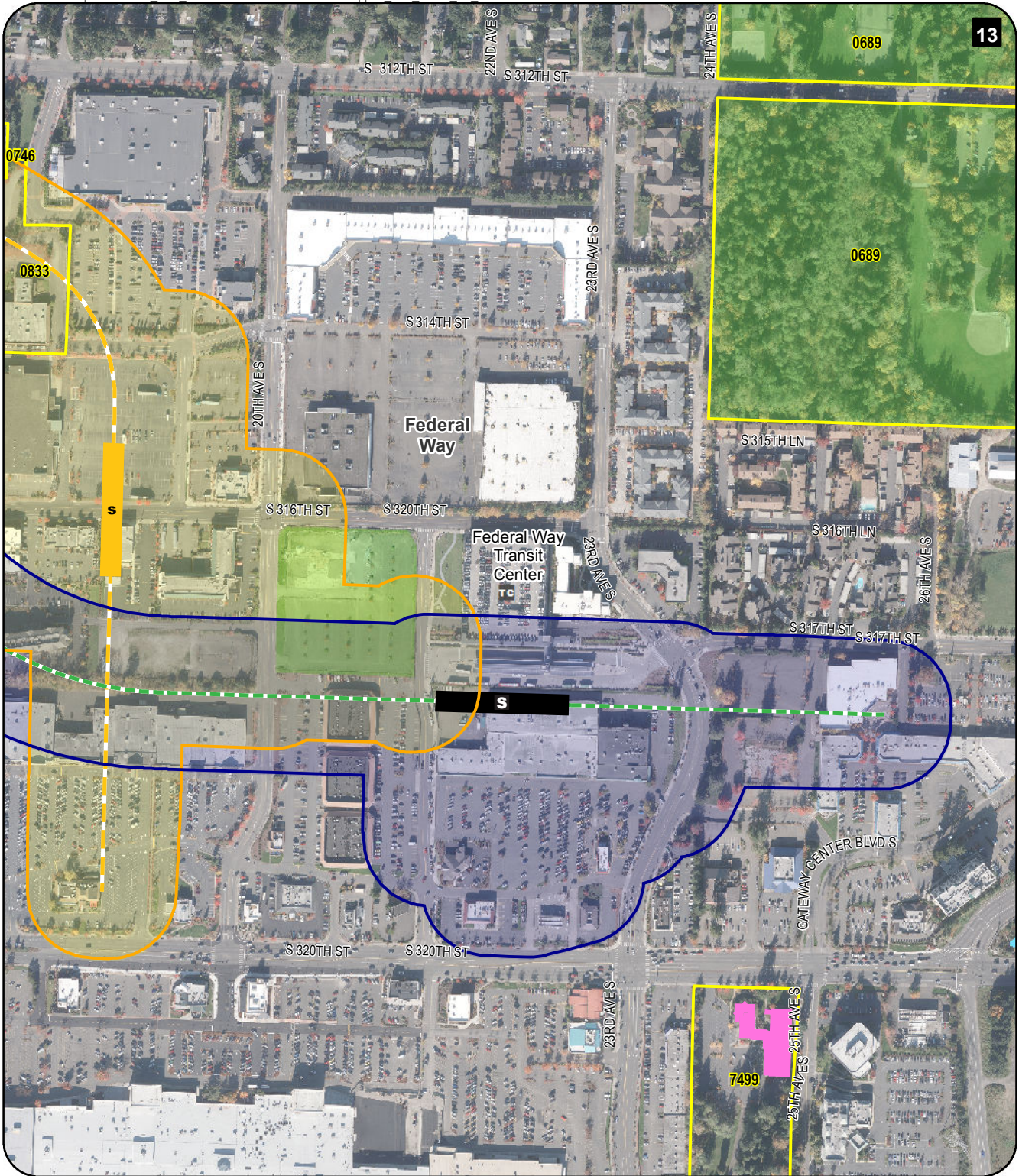
LEGEND

SR 99 Alternative Options	Surveied Property	City Boundary
Elevated	NRHP-Eligible Property	Stream
At-Grade	APE for Alternative (Area of Potential Effects)	Waterbody
Station	APE for Options (Area of Potential Effects)	Park / Open Space
Trench		
Station		

Data Sources: AeroMetric, King County, Federal Way, Kent, SeaTac (2013).

Appendix C: 7 of 19 Mapped Locations of All Parcels Surveyed for Built Environment Resources SR 99 Alternative and Options
Federal Way Link Extension



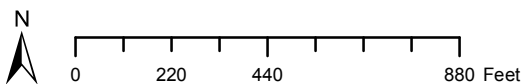


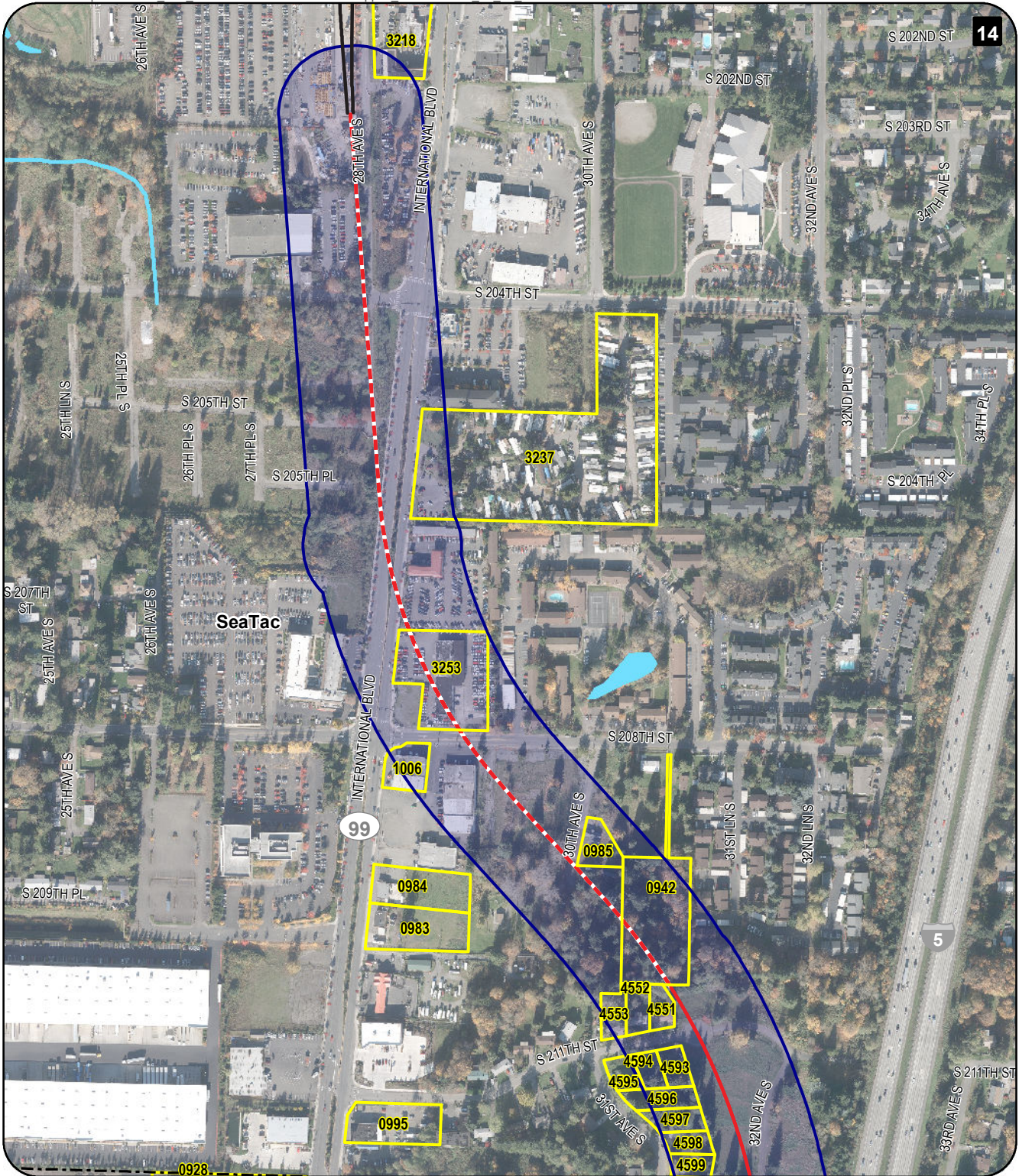
LEGEND

- | | | | |
|----------------------------------|----------------|---|-------------------|
| SR 99 Alternative Options | Options | Surveyed Property | City Boundary |
| Elevated | Elevated | NRHP-Eligible Property | Stream |
| Station | At-Grade | APE for Alternative (Area of Potential Effects) | Waterbody |
| | Trench | APE for Options (Area of Potential Effects) | Park / Open Space |
| | Station | | |

Data Sources: AeroMetric, King County, City of Federal Way (2013).

Appendix C: 8 of 19 Mapped Locations of All Parcels Surveyed for Built Environment Resources SR 99 Alternative and Options
Federal Way Link Extension



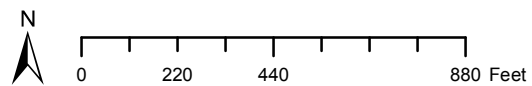


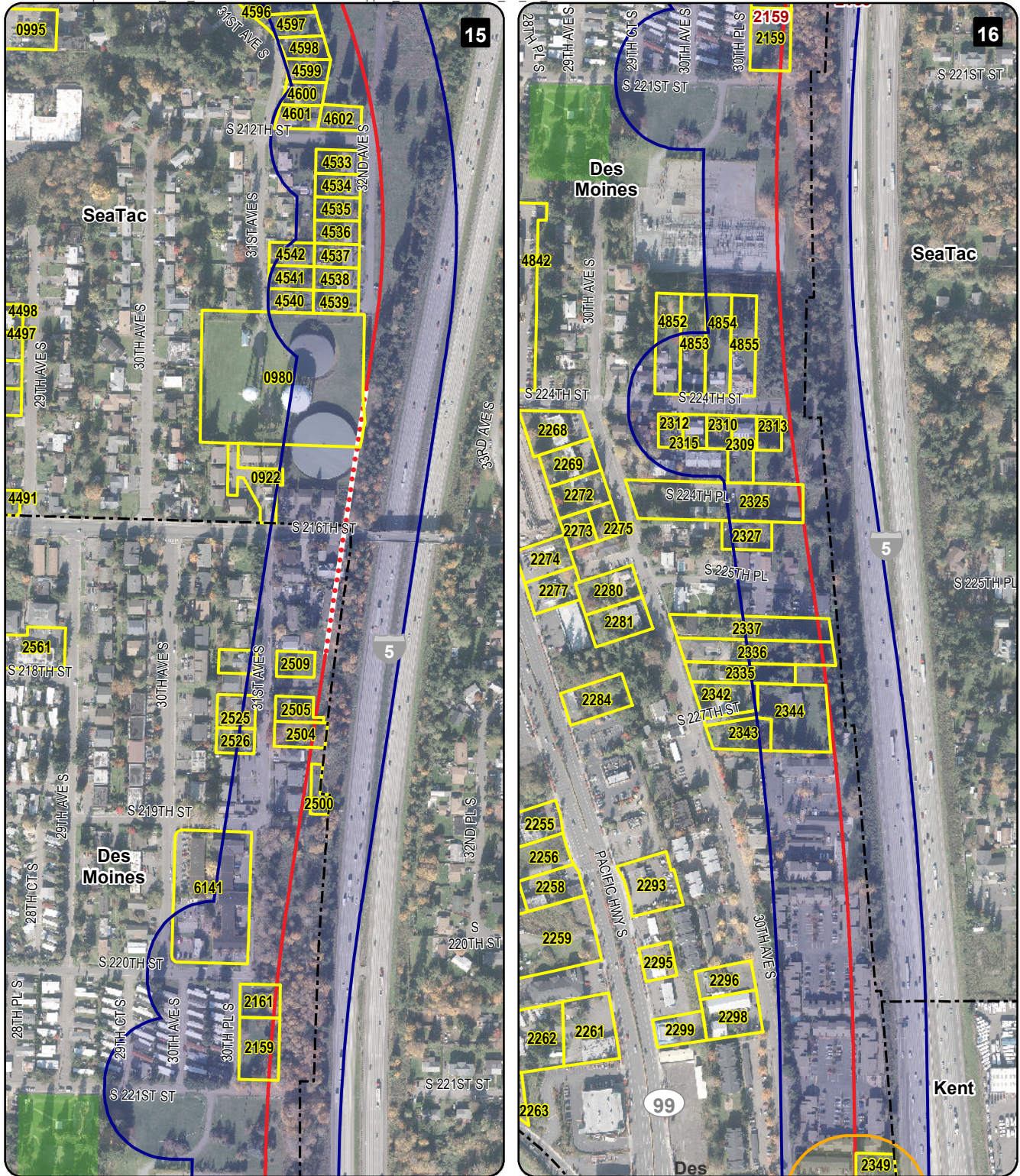
LEGEND

I-5 Alternative	Options	Surveyed Property	City Boundary
Elevated	Elevated	NRHP-Eligible Property	Stream
At-Grade	At-Grade	APE for Alternative (Area of Potential Effects)	Waterbody
Trench	Trench	APE for Options (Area of Potential Effects)	Park / Open Space
Station	Station		

Data Sources: AeroMetric, King County, Cities of Des Moines, SeaTac (2013).

Appendix C: 9 of 19 Mapped Locations of All Parcels Surveyed for Built Environment Resources I-5 Alternative and Options
Federal Way Link Extension



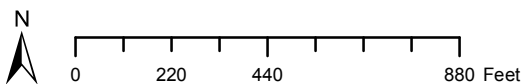


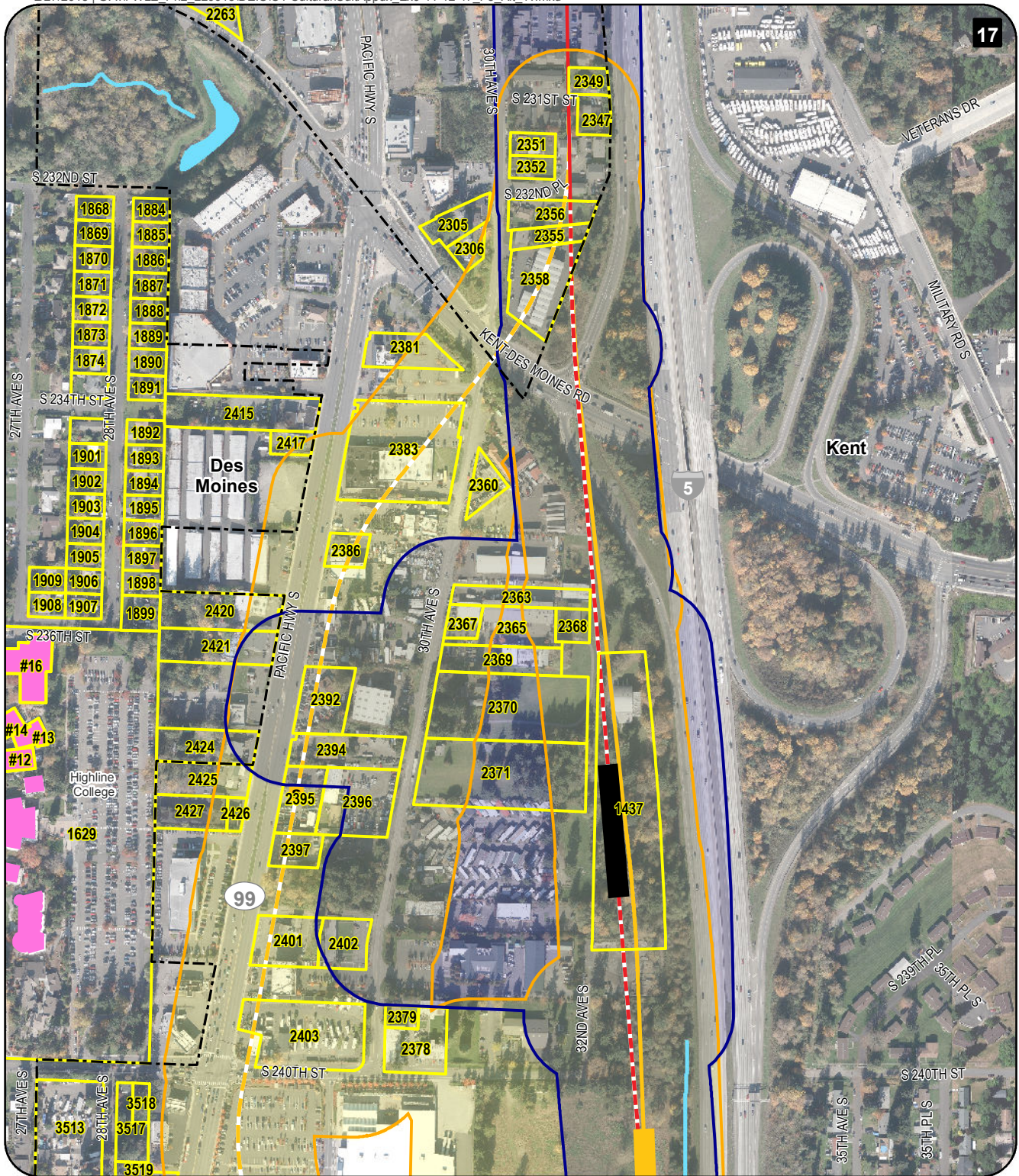
LEGEND

- | | | | |
|------------------------|----------------|---|-------------------|
| I-5 Alternative | Options | Surveyed Property | City Boundary |
| Elevated | Elevated | NRHP-Eligible Property | Stream |
| At-Grade | At-Grade | APE for Alternative (Area of Potential Effects) | Waterbody |
| Trench | Trench | APE for Options (Area of Potential Effects) | Park / Open Space |
| Station | Station | | |

Data Sources: AeroMetric, King County, Cities of Des Moines, Kent, SeaTac (2013).

Appendix C: 10 of 19 Mapped Locations of All Parcels Surveyed for Built Environment Resources I-5 Alternative and Options
Federal Way Link Extension



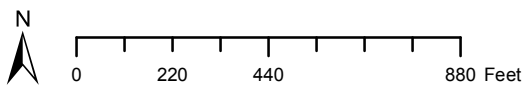


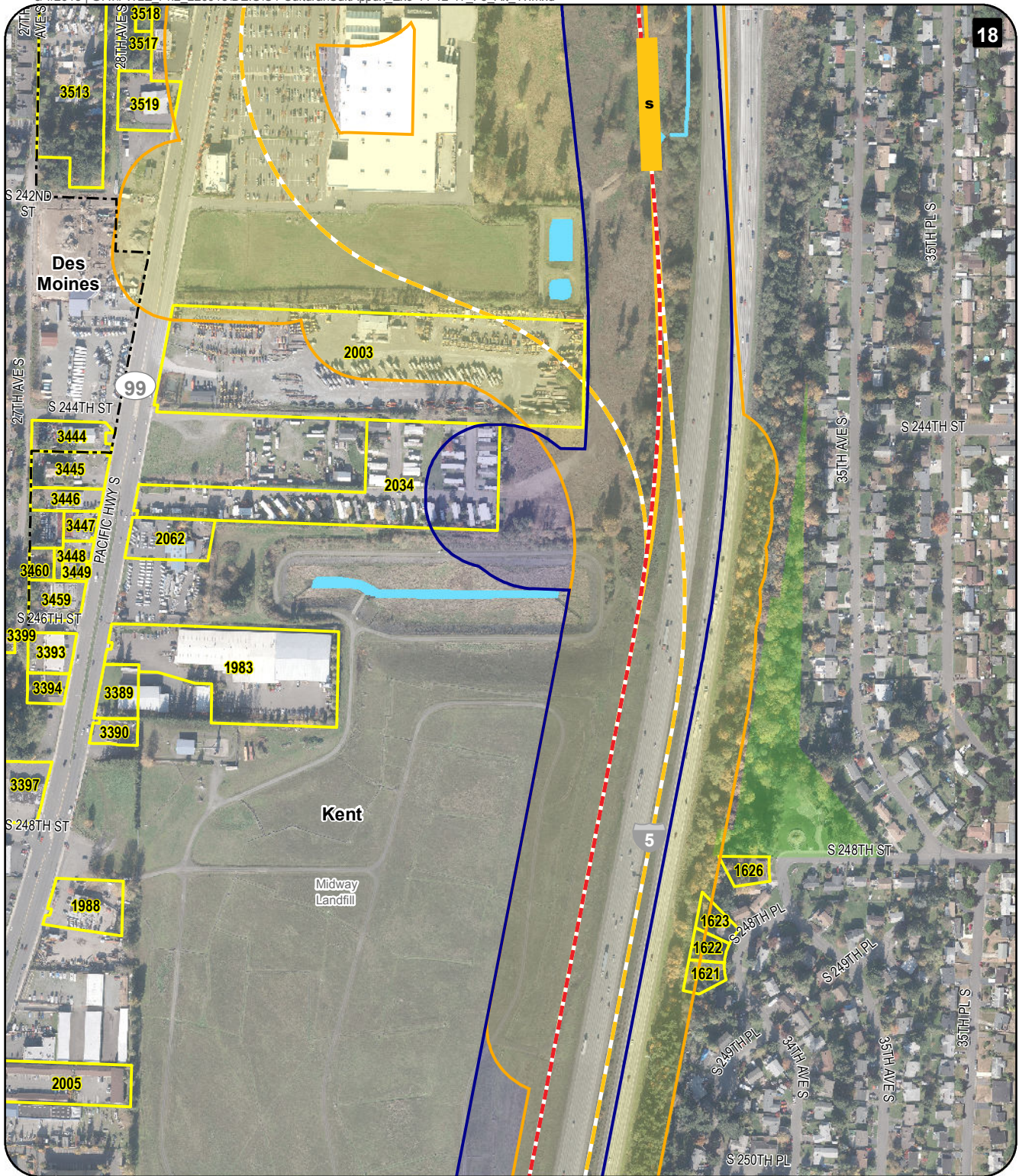
LEGEND

I-5 Alternative	Options	Surveyed Property	City Boundary
Elevated	Elevated	NRHP-Eligible Property	Stream
At-Grade	At-Grade	APE for Alternative (Area of Potential Effects)	Waterbody
Trench	Trench	APE for Options (Area of Potential Effects)	Park / Open Space
Station	Station		

Data Sources: AeroMetric, King County, City of Kent (2013).

Appendix C: 11 of 19 Mapped Locations of All Parcels Surveyed for Built Environment Resources I-5 Alternative and Options
Federal Way Link Extension



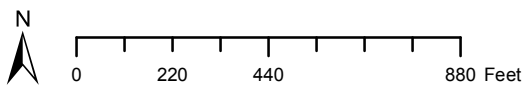


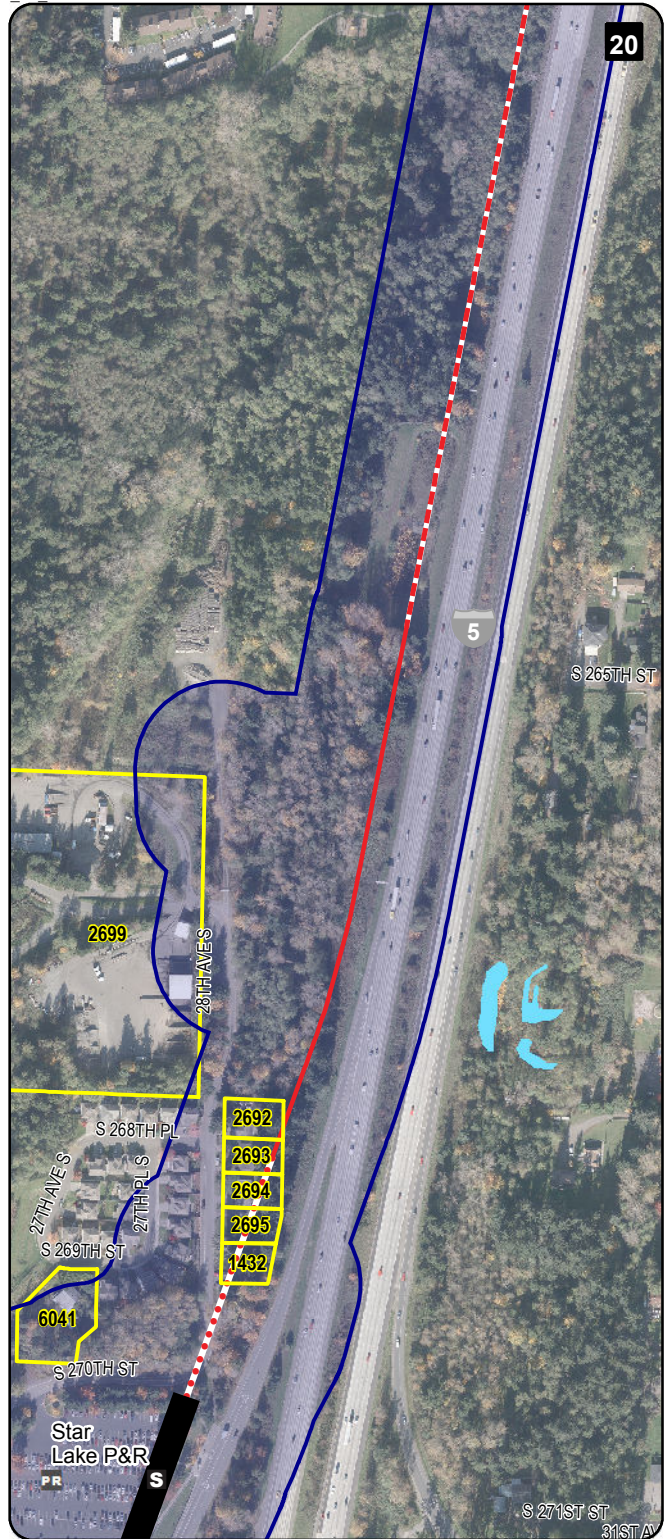
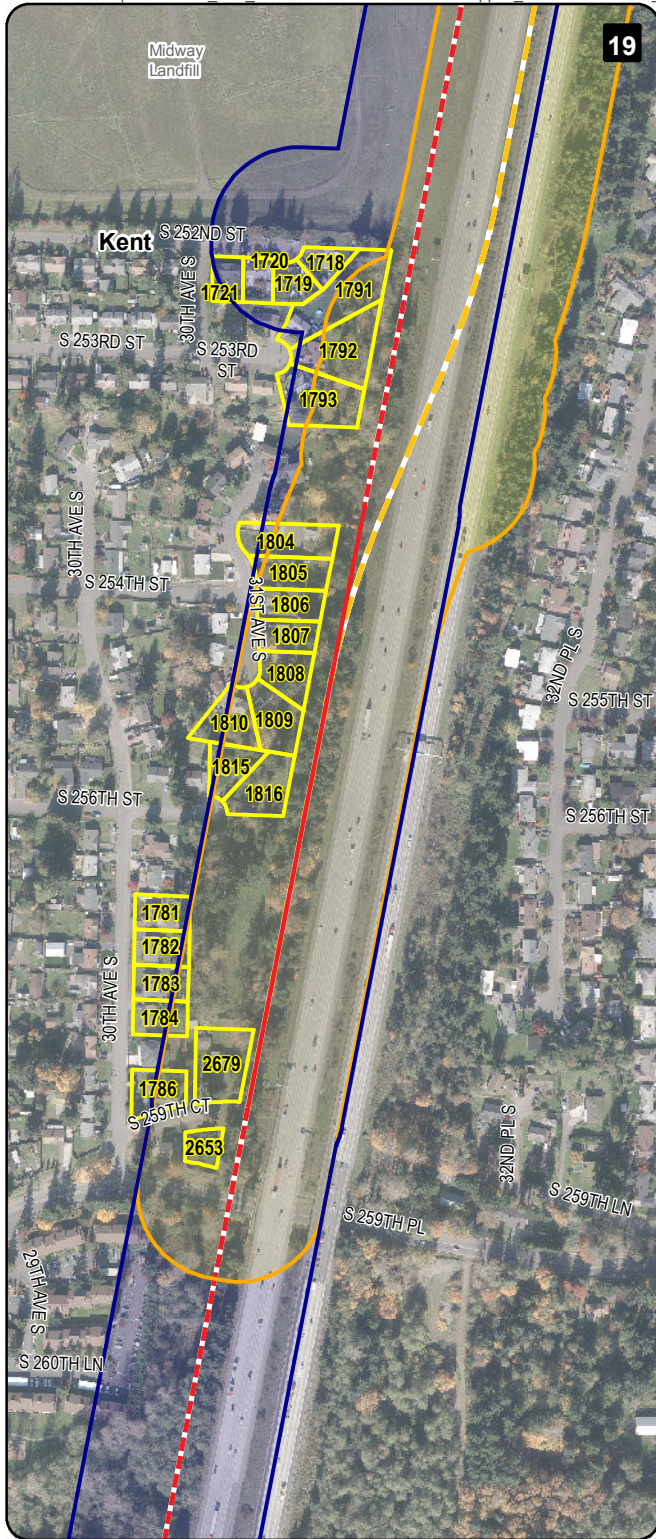
LEGEND

I-5 Alternative	Options	Surveyed Property	City Boundary
Elevated	Elevated	NRHP-Eligible Property	Stream
At-Grade	At-Grade	APE for Alternative (Area of Potential Effects)	Waterbody
Trench	Trench	APE for Options (Area of Potential Effects)	Park / Open Space
Station	Station		

Data Sources: AeroMetric, King County, City of Kent (2013).

Appendix C: 12 of 19 Mapped Locations of All Parcels Surveyed for Built Environment Resources I-5 Alternative and Options
Federal Way Link Extension

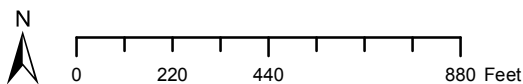




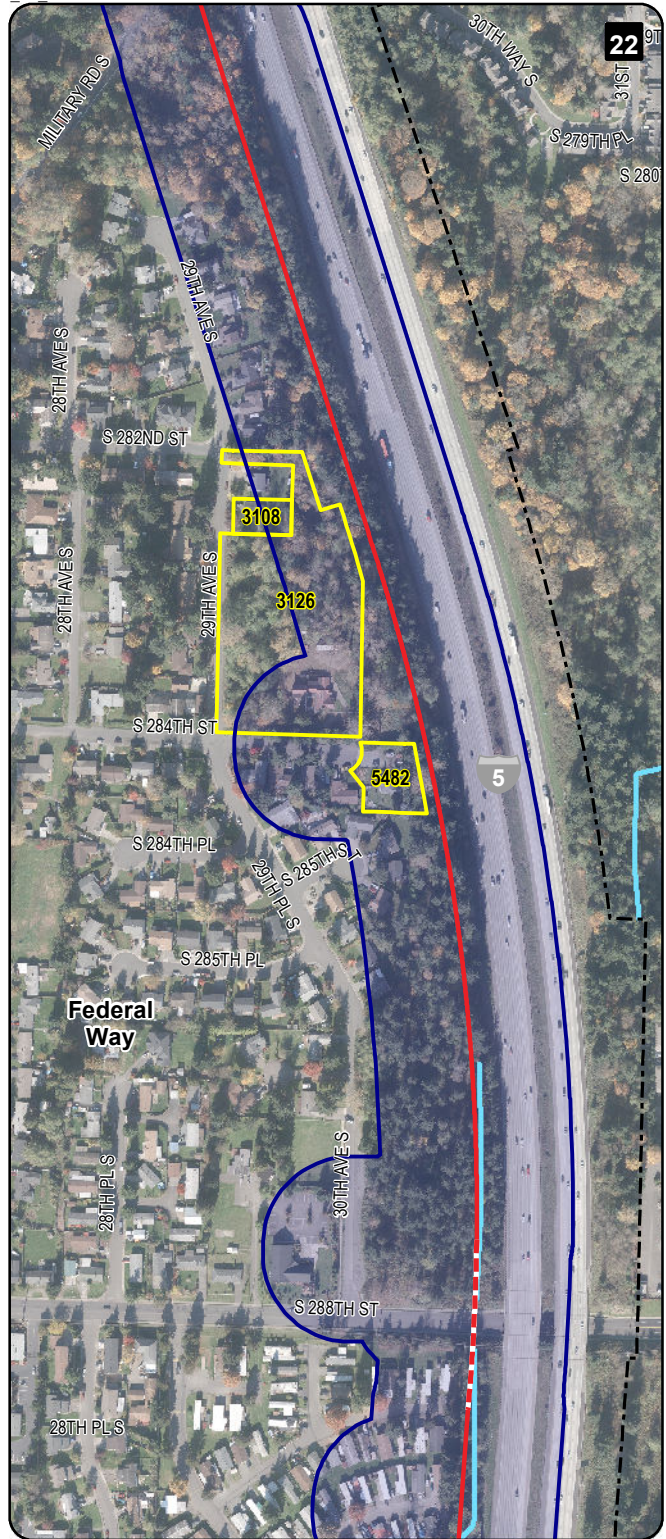
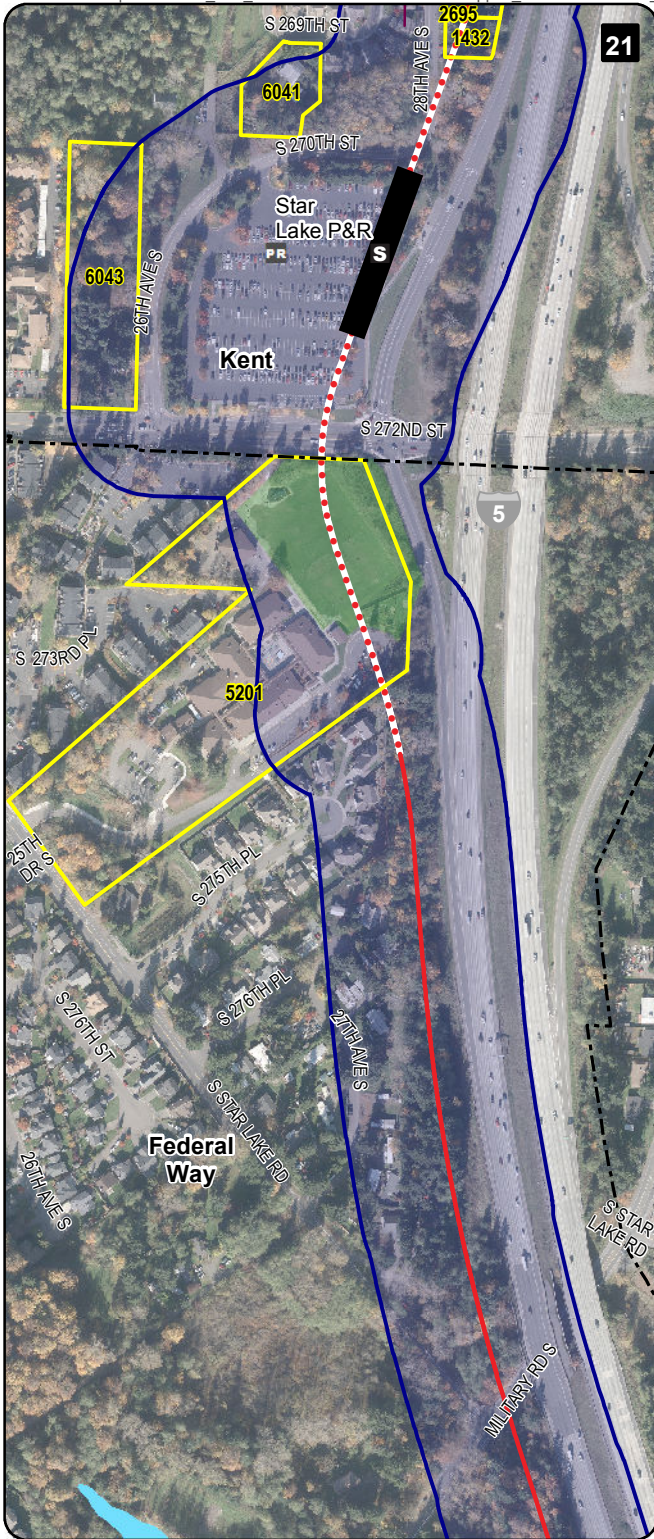
LEGEND

I-5 Alternative	Options	Surveyed Property	City Boundary
Elevated	Elevated	NRHP-Eligible Property	Stream
At-Grade	At-Grade	APE for Alternative (Area of Potential Effects)	Waterbody
Trench	Trench	APE for Options (Area of Potential Effects)	Park / Open Space
Station	Station		

Data Sources: AeroMetric, King County, Cities of Federal Way, Kent (2013).



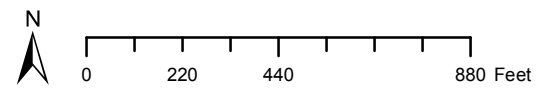
Appendix C: 13 of 19 Mapped Locations of All Parcels Surveyed for Built Environment Resources I-5 Alternative and Options Federal Way Link Extension



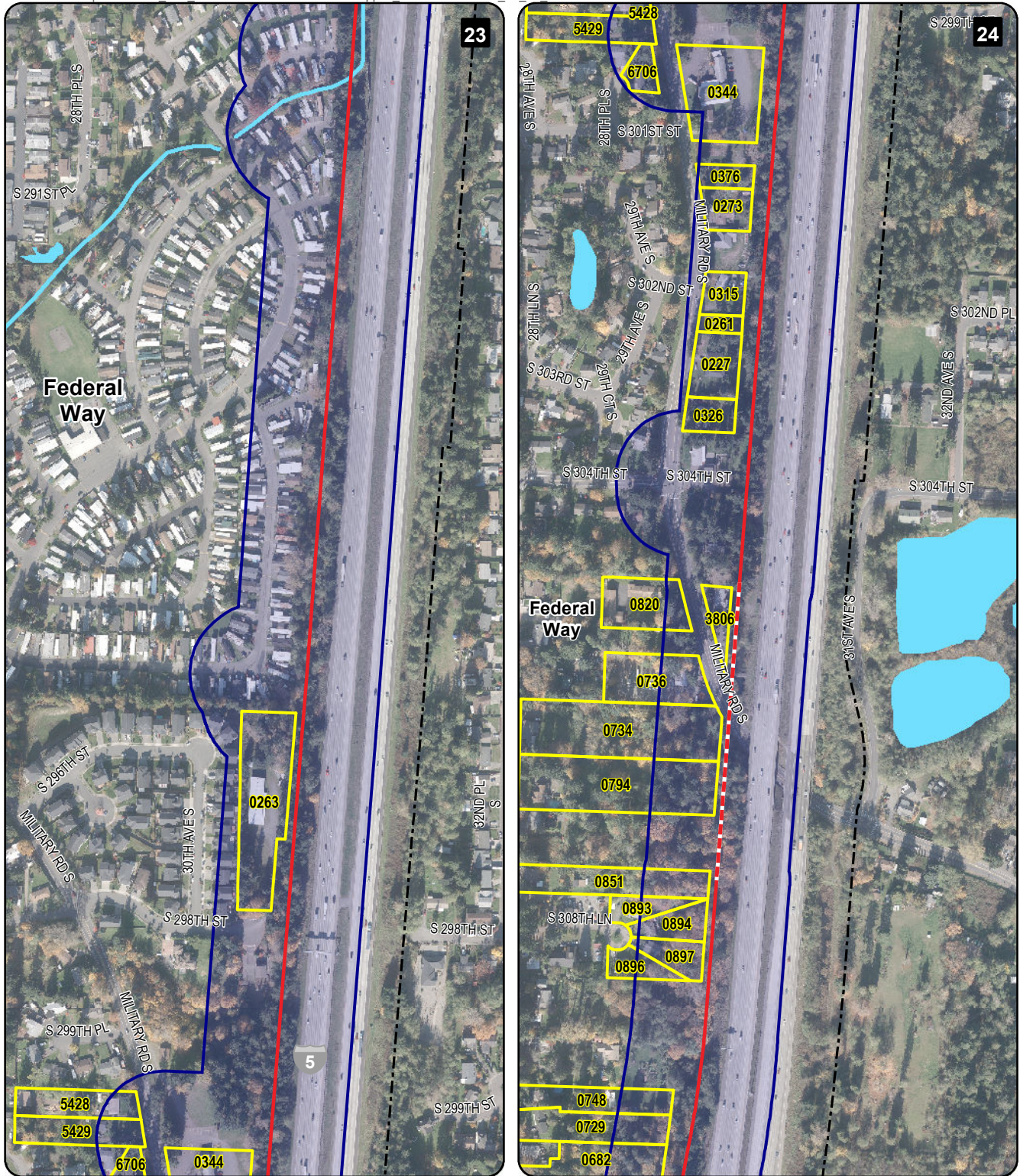
LEGEND

I-5 Alternative Options	Options	Surveyed Property	City Boundary
--- Elevated	--- Elevated	NRHP-Eligible Property	Stream
--- At-Grade	--- At-Grade	APE for Alternative (Area of Potential Effects)	Waterbody
--- Trench	--- Trench	APE for Options (Area of Potential Effects)	Park / Open Space
S Station	S Station		

Data Sources: AeroMetric, King County, City of Federal Way (2013).



Appendix C: 14 of 19 Mapped Locations of All Parcels Surveyed for Built Environment Resources
 I-5 Alternative and Options
 Federal Way Link Extension



LEGEND

I-5 Alternative Options

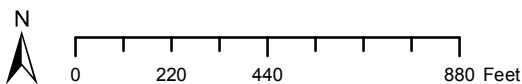
- Elevated
- At-Grade
- ... Trench
- S Station
- Elevated
- At-Grade
- ... Trench
- S Station

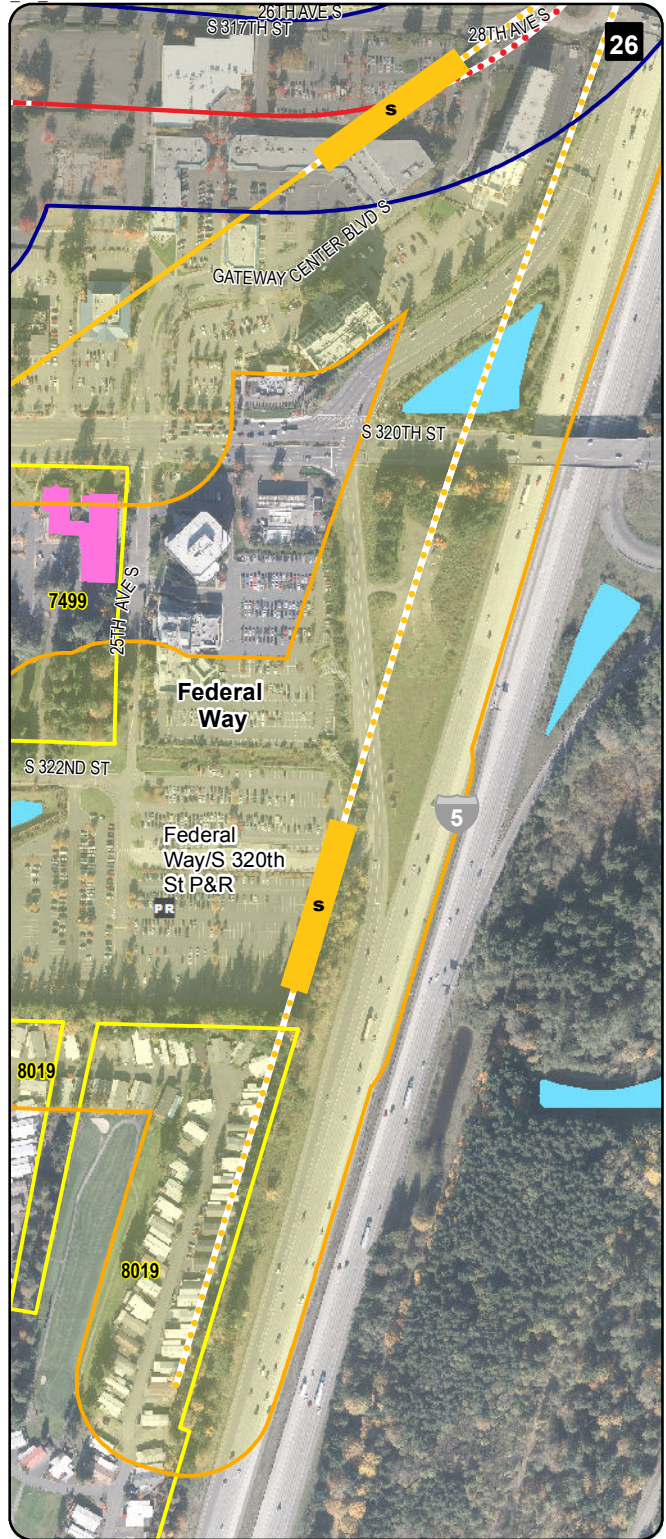
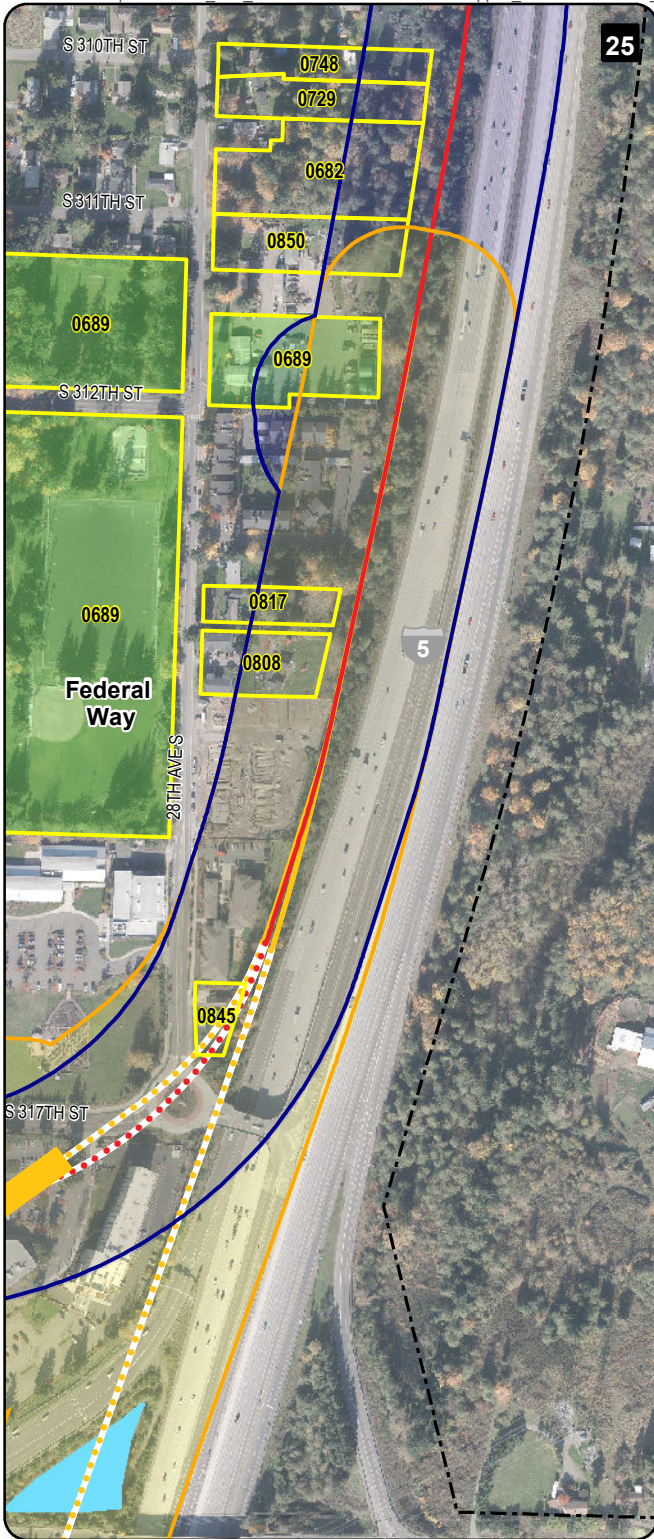
- Surveyed Property
- NRHP-Eligible Property
- APE for Alternative (Area of Potential Effects)
- APE for Options (Area of Potential Effects)

- City Boundary
- Stream
- Waterbody
- Park / Open Space

Data Sources: AeroMetric, King County, City of Federal Way (2013).

Appendix C: 15 of 19 Mapped Locations of All Parcels Surveyed for Built Environment Resources I-5 Alternative and Options Federal Way Link Extension



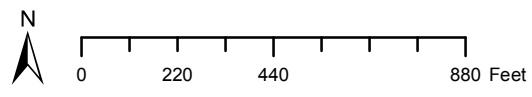


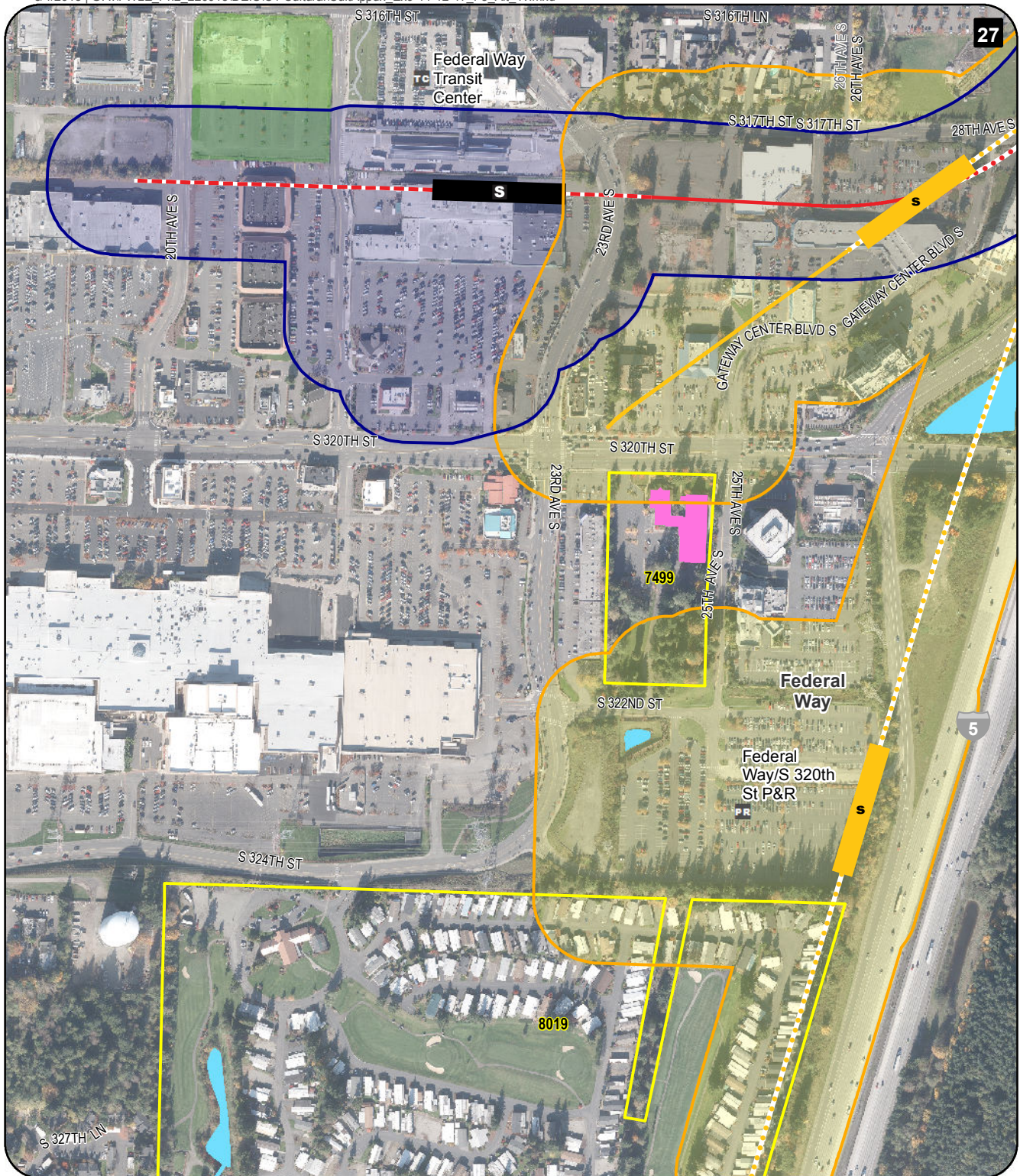
LEGEND

I-5 Alternative Options	Options	Surveyed Property	City Boundary
- - - Elevated	- - - Elevated	NRHP-Eligible Property	Stream
- - - At-Grade	- - - At-Grade	APE for Alternative (Area of Potential Effects)	Waterbody
- . . . Trench	- . . . Trench	APE for Options (Area of Potential Effects)	Park / Open Space
S Station	s Station		

Data Sources: AeroMetric, King County, City of Federal Way (2013).

Appendix C: 16 of 19 Mapped Locations of All Parcels Surveyed for Built Environment Resources I-5 Alternative and Options Federal Way Link Extension





LEGEND

I-5 Alternative

- Elevated
- At-Grade
- ... Trench
- Station

Options

- Elevated
- At-Grade
- ... Trench
- Station

□ Surveyed Property

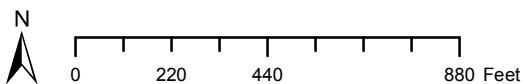
- NRHP-Eligible Property
- APE for Alternative (Area of Potential Effects)
- APE for Options (Area of Potential Effects)

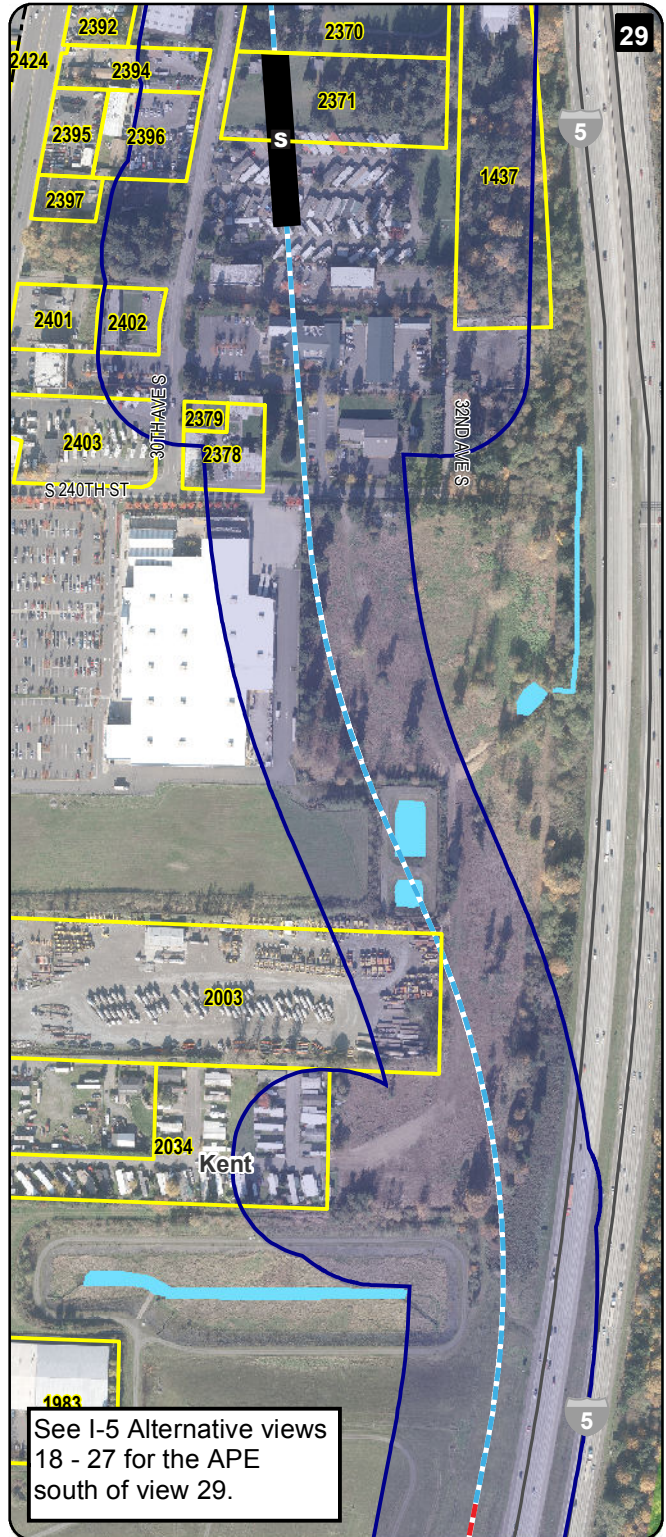
--- City Boundary

- Stream
- Waterbody
- Park / Open Space

Data Sources: AeroMetric, King County, City of Federal Way (2013).

Appendix C: 17 of 19 Mapped Locations of All Parcels Surveyed for Built Environment Resources I-5 Alternative and Options Federal Way Link Extension



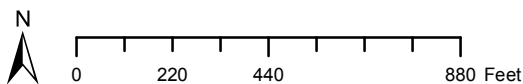


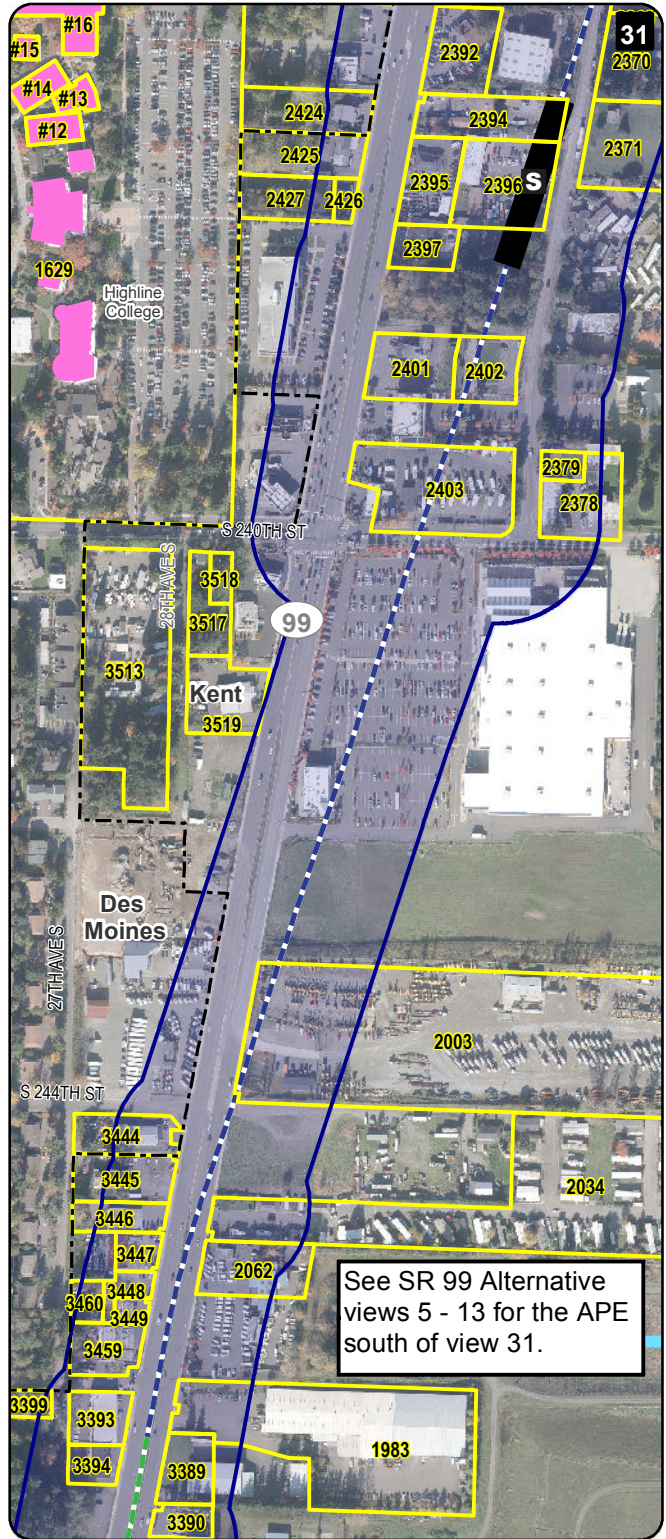
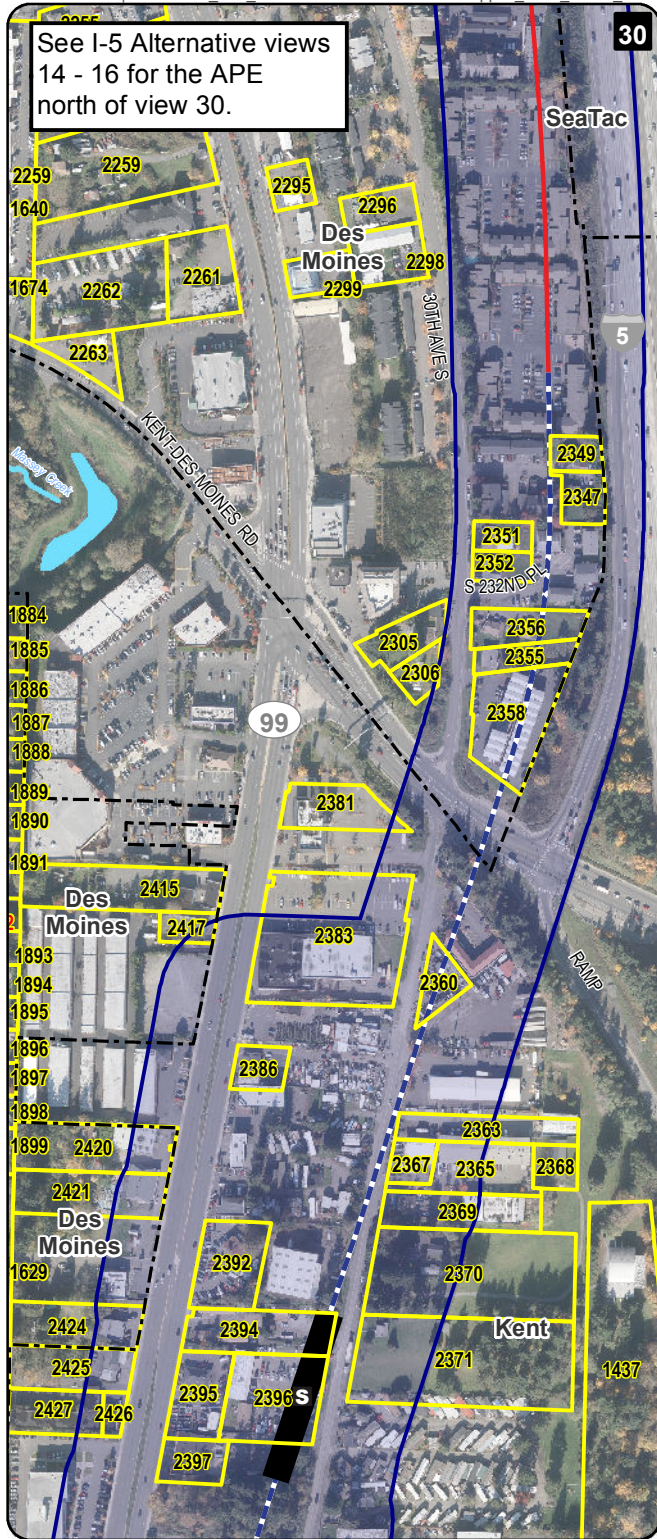
LEGEND

SR 99 to I-5 Alternative	I-5 Alternative	Surveyed Property	City Boundary
Elevated	Elevated	NRHP-Eligible Property	Stream
Station	At-Grade	APE for Alternative (Area of Potential Effects)	Waterbody
SR 99 Alternative	Trench	Park / Open Space	
Elevated			

Data Sources: AeroMetric, King County, Cities of Seatac, Des Moines, Kent (2013).

Appendix C: 18 of 19 Mapped Locations of All Parcels Surveyed for Built Environment Resources SR 99 to I-5 Alternative
Federal Way Link Extension



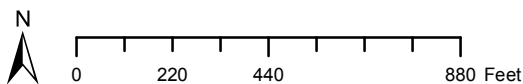


LEGEND

I-5 to SR 99 Alternative	I-5 Alternative	Surveyed Property	City Boundary
Elevated	Elevated	NRHP-Eligible Property	Stream
Station	At-Grade	APE for Alternative (Area of Potential Effects)	Waterbody
SR 99 Alternative	Trench	Park / Open Space	
Elevated			

Data Sources: AeroMetric, King County, Cities of Seatac, Des Moines, Kent (2013).

**Appendix C: 19 of 19 Mapped Locations of All Parcels
Surveyed for Built Environment Resources
I-5 to SR 99 Alternative
Federal Way Link Extension**



This page intentionally left blank.