

## Tacoma Link Expansion: Hybrid with South Connection to MLK (H1)

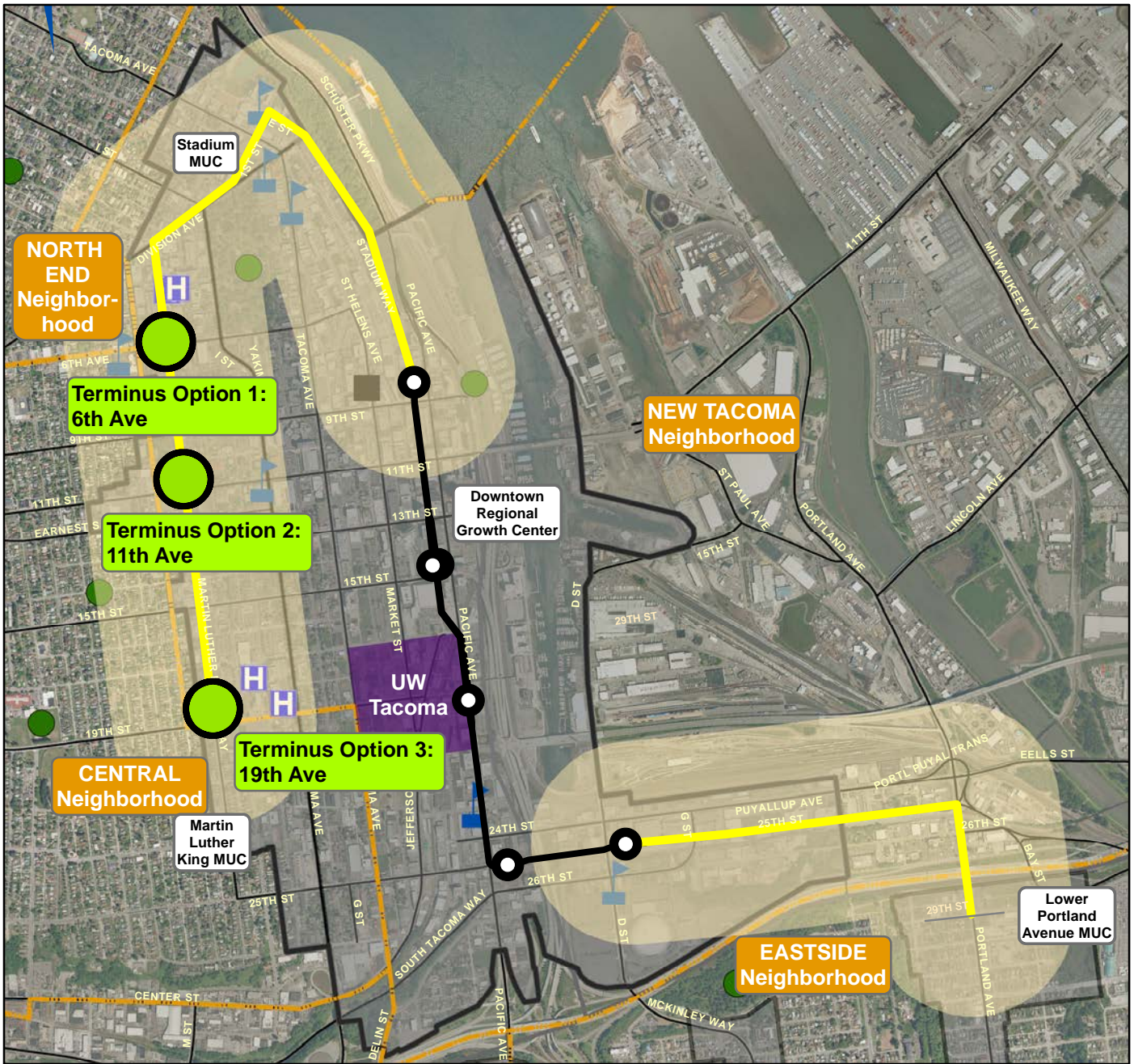
### Legend

- Hybrid with South Connection to MLK
- Hybrid Corridor Buffer\*
- Existing Tacoma LINK
- Link Stations
- Hospitals
- Parks
- Primary School
- Secondary School, Post-secondary and Vocational School
- Neighborhood Boundary
- Mixed Use Centers
- Streets - Residential
- Streets - Arterial
- Highways
- \*Maps show 1/2 mile wide corridor study areas

Segment	Length (Mi)		Estimated Segment Cost	Estimated Total Cost*
	Segment	Total*		
Terminus Option 3: 25th Ave Station to MLK and 19th St	1.5	2.4	\$101.7M	\$139.6M
Terminus Option 2: 25th Ave Station to MLK and 11th St	2.1	3.0	\$149.3M	\$187.2M
Terminus Option 1: 25th Ave Station to MLK and 6th Ave	2.4	3.3	\$180.5M	\$218.4M

\*Calculation includes east segment from Tacoma Dome Station to Portland Ave/29th St. Estimated length for east segment would be 0.9 mi and estimated cost would be \$37.9M.





## Tacoma Link Expansion: Hybrid with North Connection to MLK (H2)

### Legend

- Hybrid with North Connection to MLK
  - Hybrid Corridor Buffer\*
  - Existing Tacoma LINK
  - Link Stations
  - Hospitals
  - Parks
  - Primary School
  - Secondary School, Post-secondary and Vocational School
  - Neighborhood Boundary
  - Mixed Use Centers
  - Streets - Arterial
  - Highways
- \*Maps show 1/2 mile wide corridor study areas

Segment	Length (Mi)		Estimated Segment Cost	Estimated Total Cost*
	Segment	Total*		
Terminus Option 1: Theater District Stn to MLK/6th Ave	1.4	2.3	\$59.7M	\$97.6M
Terminus Option 2: Theater District Stn to MLK/11th St	1.7	2.6	\$90.9M	\$128.8M
Terminus Option 3: Theater District Stn to MLK/19th St	2.3	3.2	\$138.5M	\$176.4M

\*Calculation includes east segment from Tacoma Dome Station to Portland Ave/29th St. Estimated length for east segment would be 0.9 mi and estimated cost would be \$37.9M.

