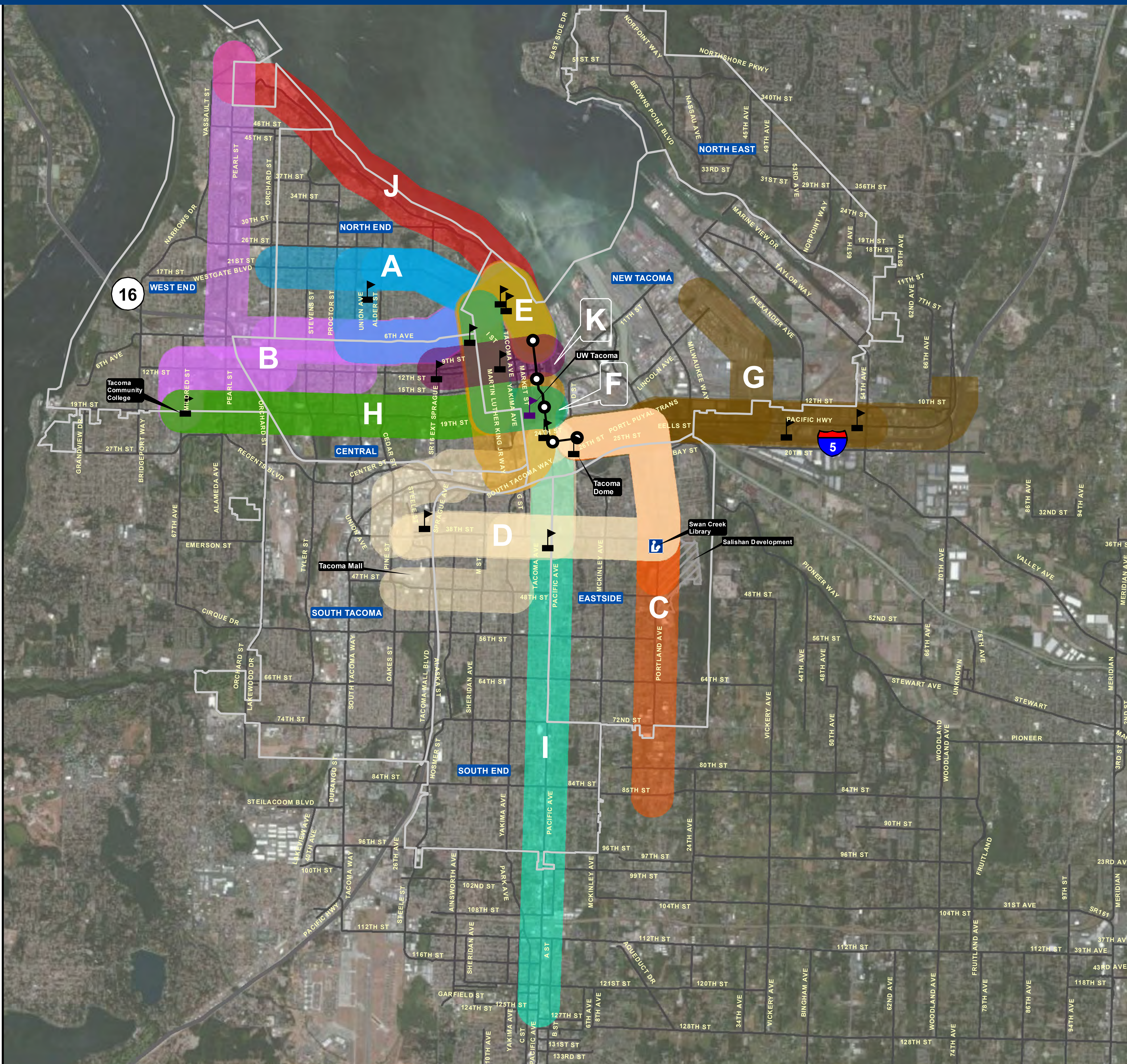


ALL POTENTIAL CORRIDORS

TACOMA LINK EXPANSION



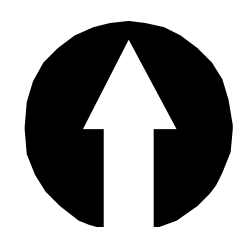
Tacoma Link Expansion: All Potential Corridors

Legend

- | | | |
|-----------------------------------|---|---|
| Existing Tacoma LINK | North End Corridor (A1, A2, and A3) | South Downtown MLK Corridor (F) |
| Link Stations | North End Central Corridor (B1, B2, B3, and B4) | Pacific Highway Corridor (G1, G2, and G3) |
| Swan Creek Library | Eastside Corridor (C1 and C2) | South Downtown Central Corridor (H1 and H2) |
| UW Tacoma | South End Corridor (D1, D2, D3, and D4) | PLU Corridor (I) |
| Post-secondary/vocational Schools | Point Defiance RustonWy Study Corridor (J) | Downtown to Sprague Ave via 11th Corridor (K) |
| Streets - Arterial | North Downtown Central Corridor (E1 and E2) | |
| Council Boundaries | | |
| Salishan | | |

Maps show 1/2 mile wide corridor study areas

0 0.5 Miles



POTENTIAL CORRIDOR A

TACOMA LINK EXPANSION



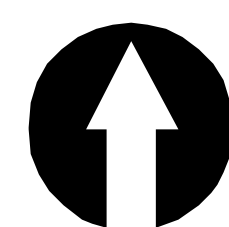
Tacoma Link Expansion: Corridor A - North End

Legend

- | | | | |
|----------------|---|-----------------|----------------------------------|
| | Existing Tacoma LINK | Corridor | |
| | Link Stations | | A1 |
| | Other Community Institutions | | A2 |
| | Hospitals | | A3 |
| | Parks | | North End Corridor (A1) |
| Schools | | | North End Extended Corridor (A2) |
| | Primary School | | North End Loop Corridor (A3) |
| | Secondary School/ Post-secondary/ Vocational school | | Neighborhood Boundary |
| | | | Mixed Use Centers |
| | | | Streets - Arterial |
| | | | Highways |

Maps show 1/2 mile wide corridor study areas

0 0.5 Miles



SOUNDTRANSIT



POTENTIAL CORRIDOR B

TACOMA LINK EXPANSION



Tacoma Link Expansion: Corridor B - North End Central

Legend

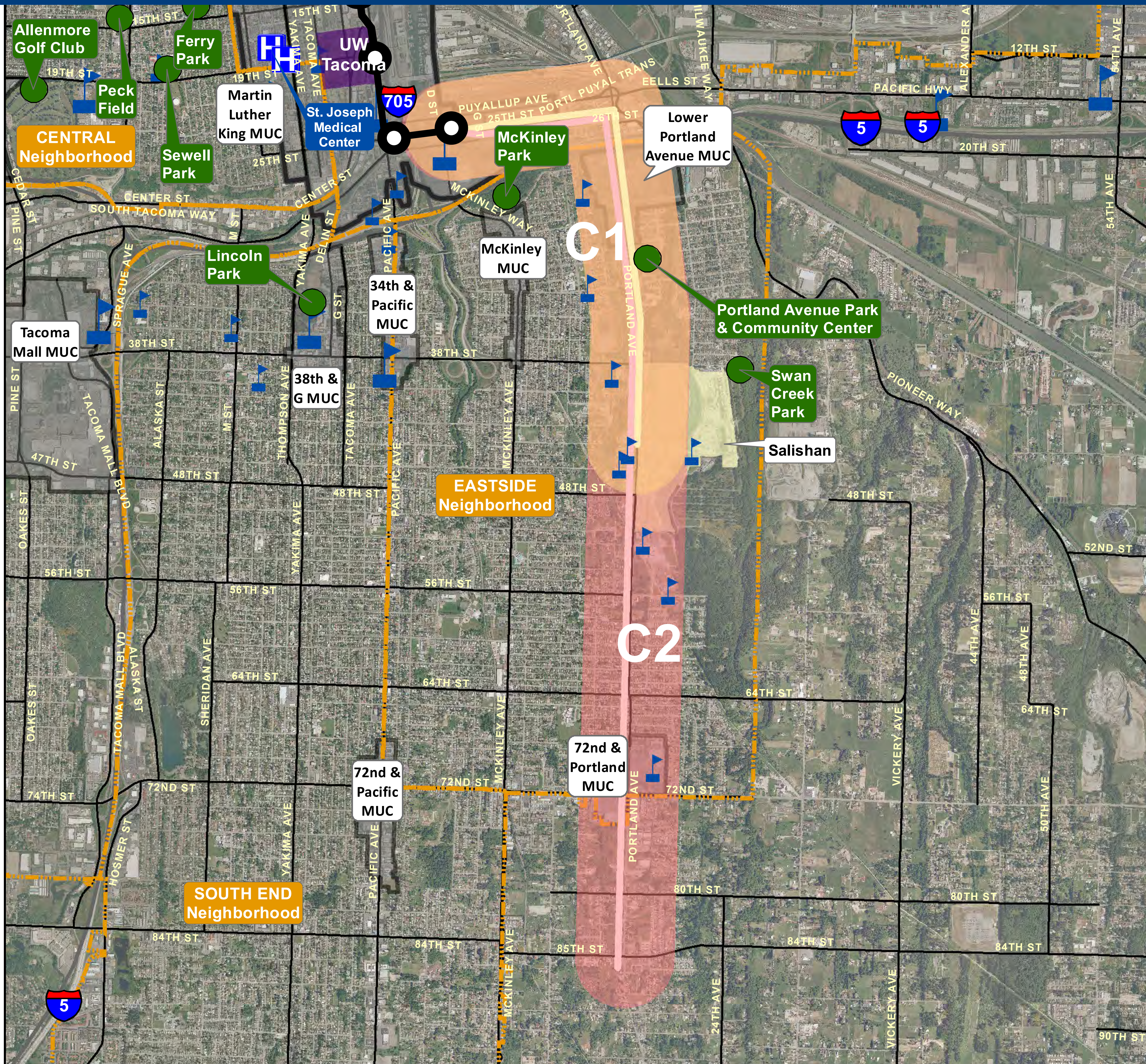
- | | | |
|--|--|-----------------------|
| Existing Tacoma LINK | Corridor B1 | Neighborhood Boundary |
| Link Stations | Corridor B2 | Mixed Use Centers |
| Other Community Institutions | Corridor B3 | Streets - Arterial |
| Hospitals | Corridor B4 | Highways |
| Parks | North End Central Corridor (B1) | |
| Schools | North End Central to Point Defiance Corridor (B2) | |
| Primary School | North End Central to TCC Corridor (B3) | |
| Secondary School, Post-secondary and Vocational School | North End Central to TCC via Orchard Corridor (B4) | |

Maps show 1/2 mile wide corridor study areas



POTENTIAL CORRIDOR C

TACOMA LINK EXPANSION



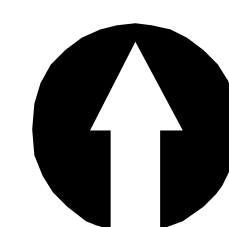
Tacoma Link Expansion: Corridor C - Eastside

Maps show 1/2 mile wide corridor study areas

Legend

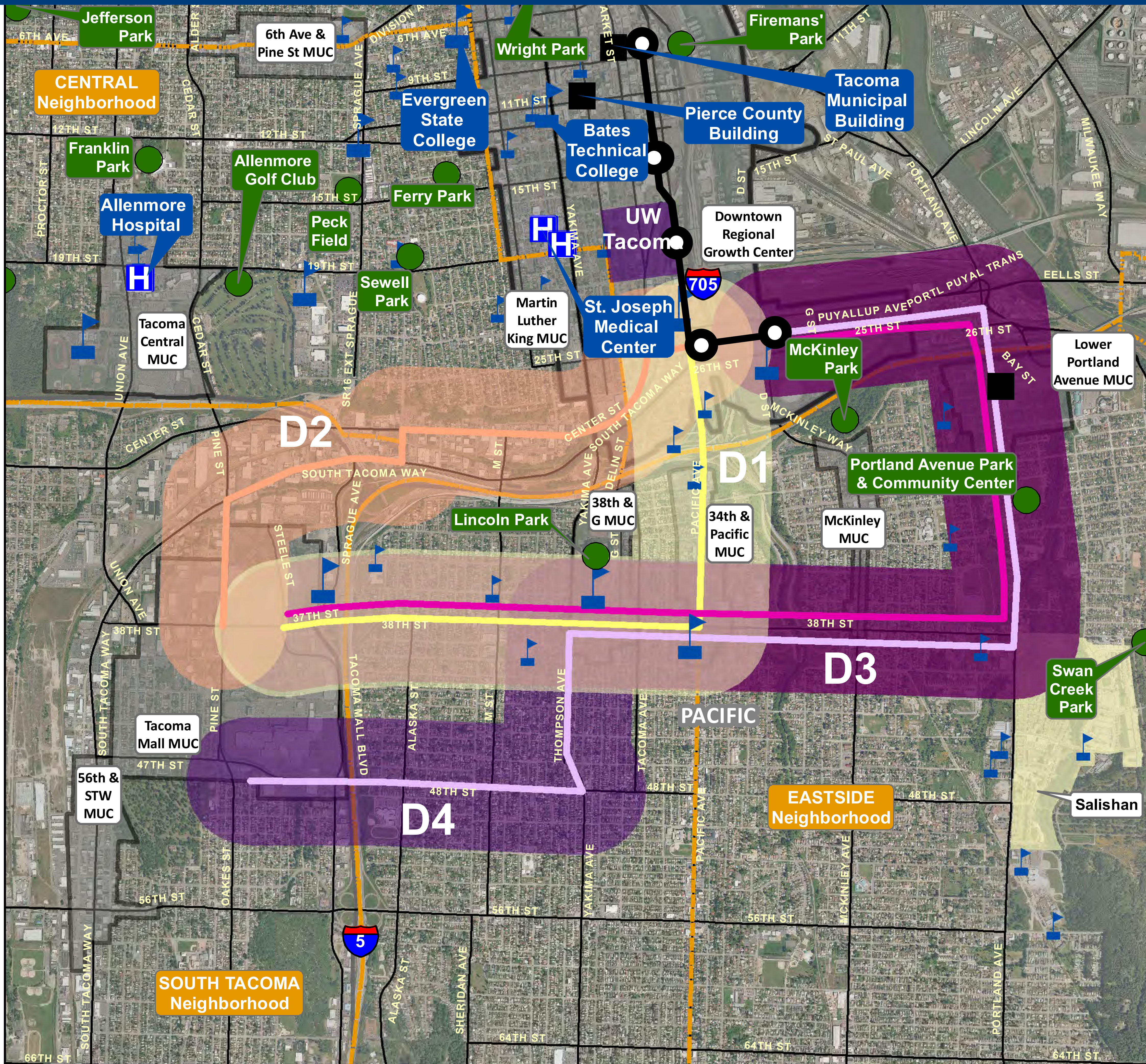
- | | |
|--|-----------------------------------|
| Existing Tacoma LINK | Corridor |
| Link Stations | C1 |
| Hospitals | C2 |
| Parks | Eastside Corridor (C1) |
| Schools | South to Mt Rainier Corridor (C2) |
| Primary School | Neighborhood Boundary |
| Secondary School, Post-secondary and Vocational School | Mixed Use Centers |
| | Salishan |
| | Streets - Arterial |
| | Highways |

0 0.5 Miles



POTENTIAL CORRIDOR D

TACOMA LINK EXPANSION



Tacoma Link Expansion: Corridor D - Southend

Legend

- | | | | | | |
|--|--|--|---|--|-----------------------|
| | Existing Tacoma LINK | | Corridor D1 | | Neighborhood Boundary |
| | Link Stations | | Corridor D2 | | Mixed Use Centers |
| | Other Community Institutions | | Corridor D3 | | Salishan |
| | Hospitals | | Corridor D4 | | Streets - Arterial |
| | Parks | | South End Corridor (D1) | | Highways |
| | Schools | | South End via Jefferson Corridor (D2) | | |
| | Primary School | | South End via Portlan 38th Corridor (D3) | | |
| | Secondary School, Post-secondary and Vocational school | | South End via Portland 48th Corridor (D4) | | |

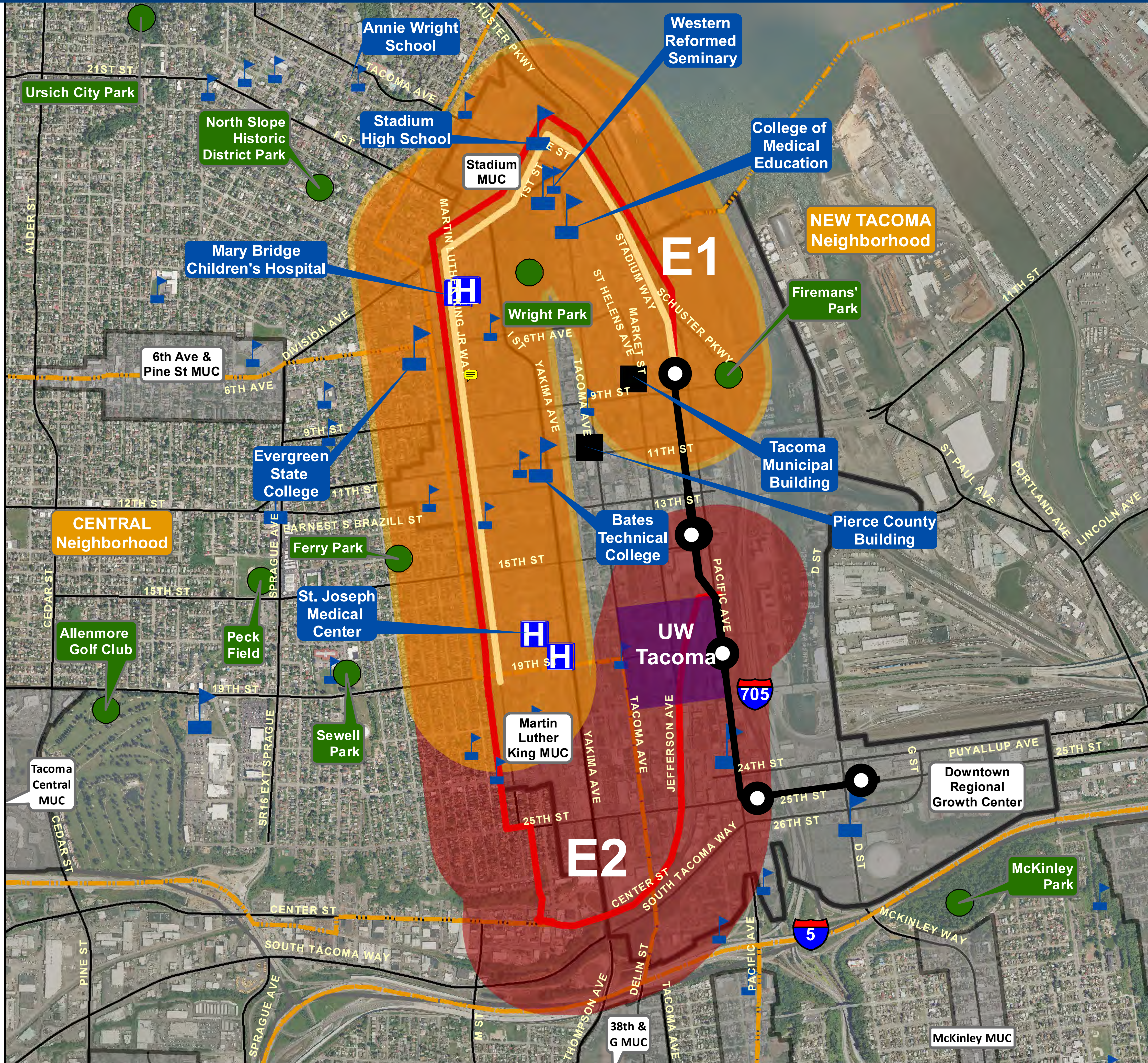
Maps show 1/2 mile wide corridor study areas

0 0.5 Miles



POTENTIAL CORRIDOR E

TACOMA LINK EXPANSION



Tacoma Link Expansion: Corridor E - North Downtown Central

Legend

- | | |
|--|---|
| Existing Tacoma LINK | Corridor |
| Link Stations | E1 |
| Other Community Institutions | E2 |
| Hospitals | North Downtown Central Corridor (E1) |
| Parks | North Downtown Central Loop Corridor (E2) |
| Schools | Neighborhood Boundary |
| Primary School | Mixed Use Centers |
| Secondary School, Post-secondary and Vocational school | Streets - Arterial |
| | Highways |

Maps show 1/2 mile wide corridor study areas

