

# Tonight's Agenda

- 6:00 pm – Open House
- 6:30 pm – Presentation
  - **Introduction and Roosevelt Station Overview**
    - Kristin Hoffman, Station Project Manager
  - **Station and Landscape Design**
    - David Hewitt, Station Architect
  - **STart Overview**
    - Barbara Luecke, STart Program Manager
  - **Exterior Art Concept**
    - Barbara Luecke on behalf of R&R Studios
  - **Interior Art Concept**
    - Luca Buvoli
  - **Questions and Answers**
  - **Next Steps**
- 7:45 pm – Return to Open House
- 8:30 pm – Close



# Roosevelt Station 60% Design & Art Concepts Open House

April 11, 2012



# Link Light Rail System



- 16 miles of light rail with 13 stations currently in service
- University Link under construction; opens 2016
- ST2 Plan funded extensions to Overlake, South King County, and Lynnwood
- 54 mile system

# North Link (University District to Northgate)

- 4.3-mile light rail extension
- Stations at Brooklyn, Roosevelt, and Northgate
- Completion: 2021
- 62,000 daily boardings added to system by 2030



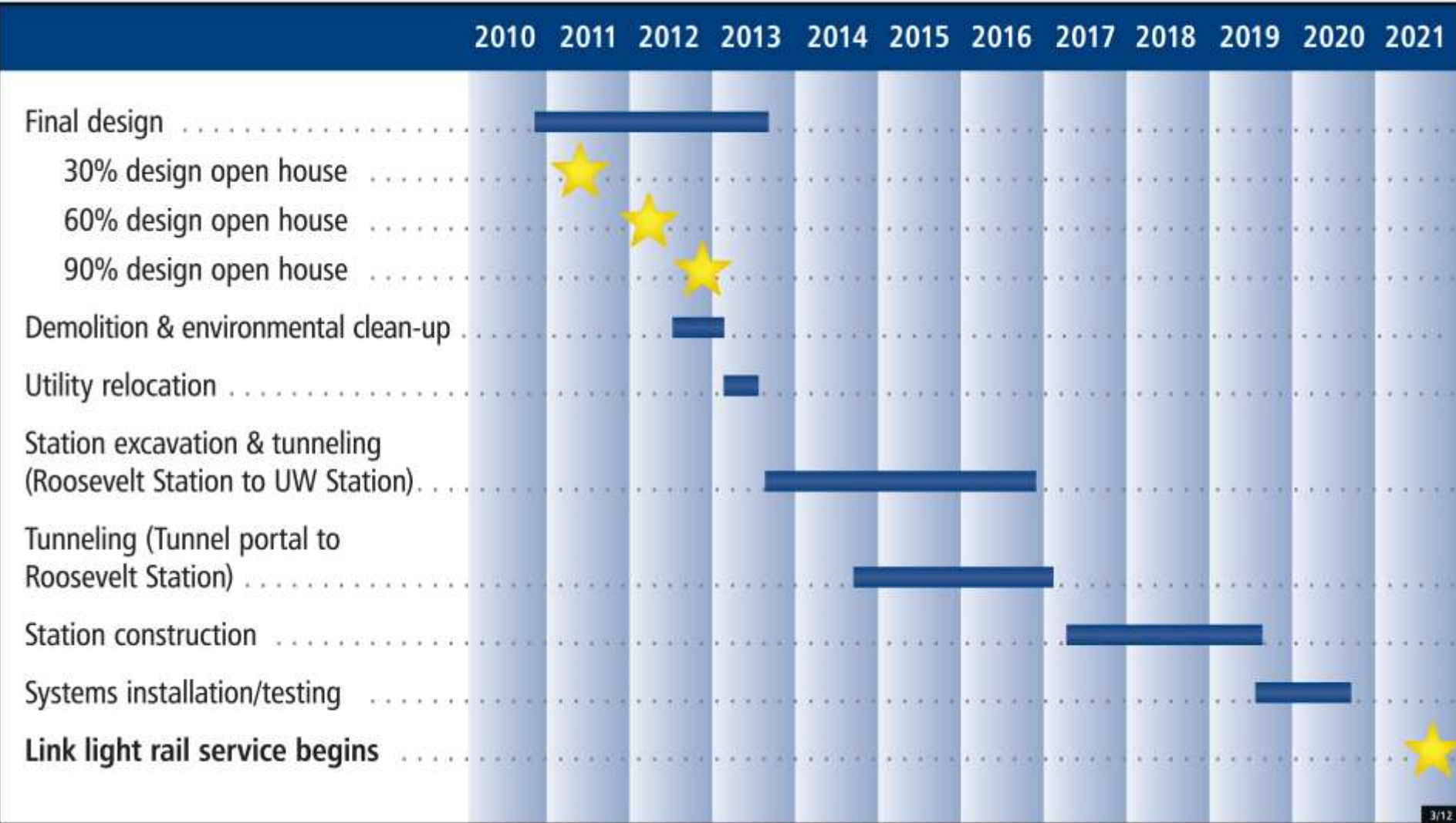
# Roosevelt Station

## Key Features

- Station platform 70'-90' underground
- Elevators, escalators and stairs at both entrances
- Bicycle parking
- Connections to buses on NE 65<sup>th</sup> St, 12<sup>th</sup> Ave NE and Roosevelt Way NE
- 8,000 daily boardings (2030)



# Roosevelt Station Schedule



3/12

# Site Plan Comparisons



30% Plan



Current Plan

# Grade Level Plan

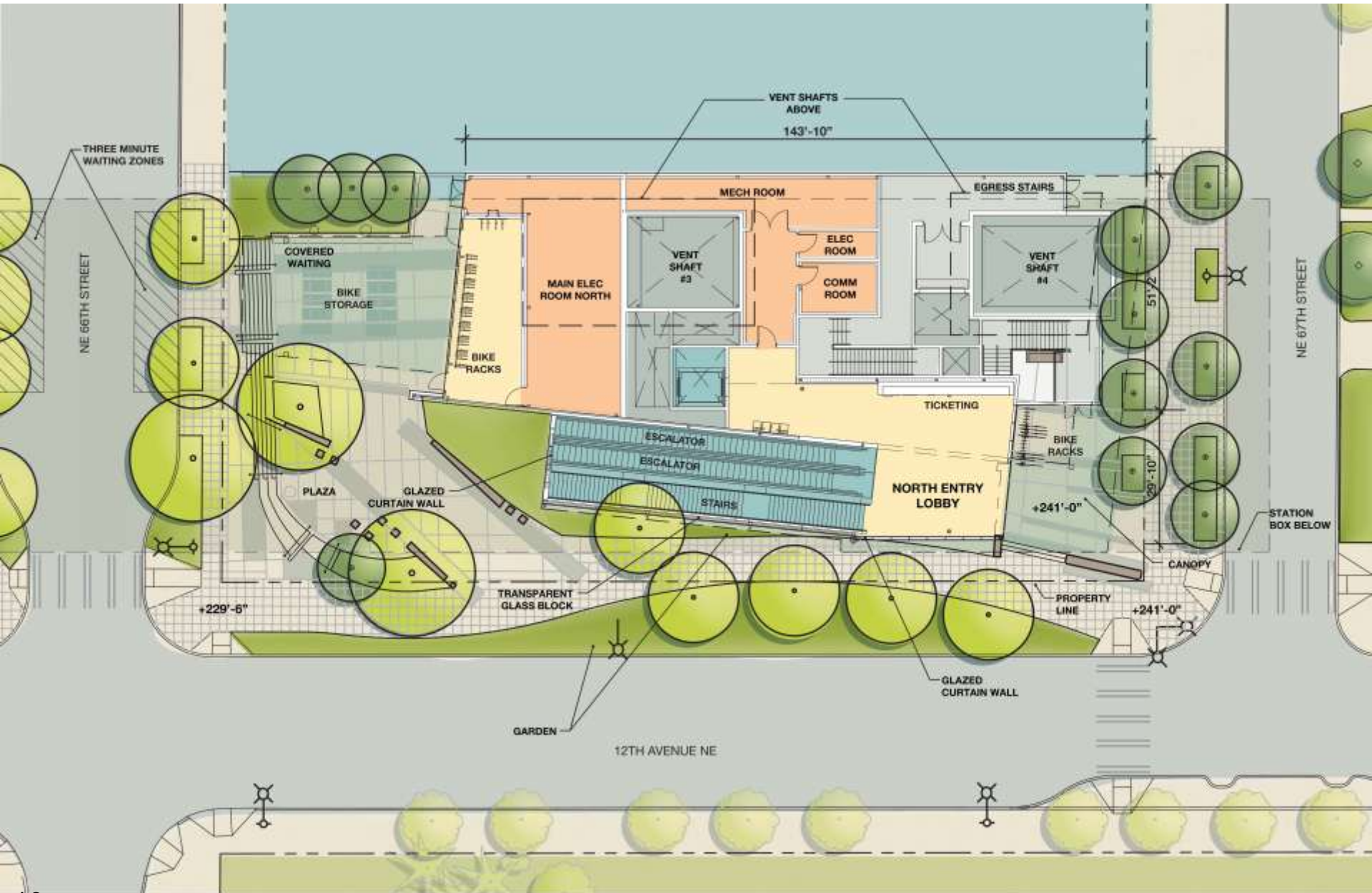




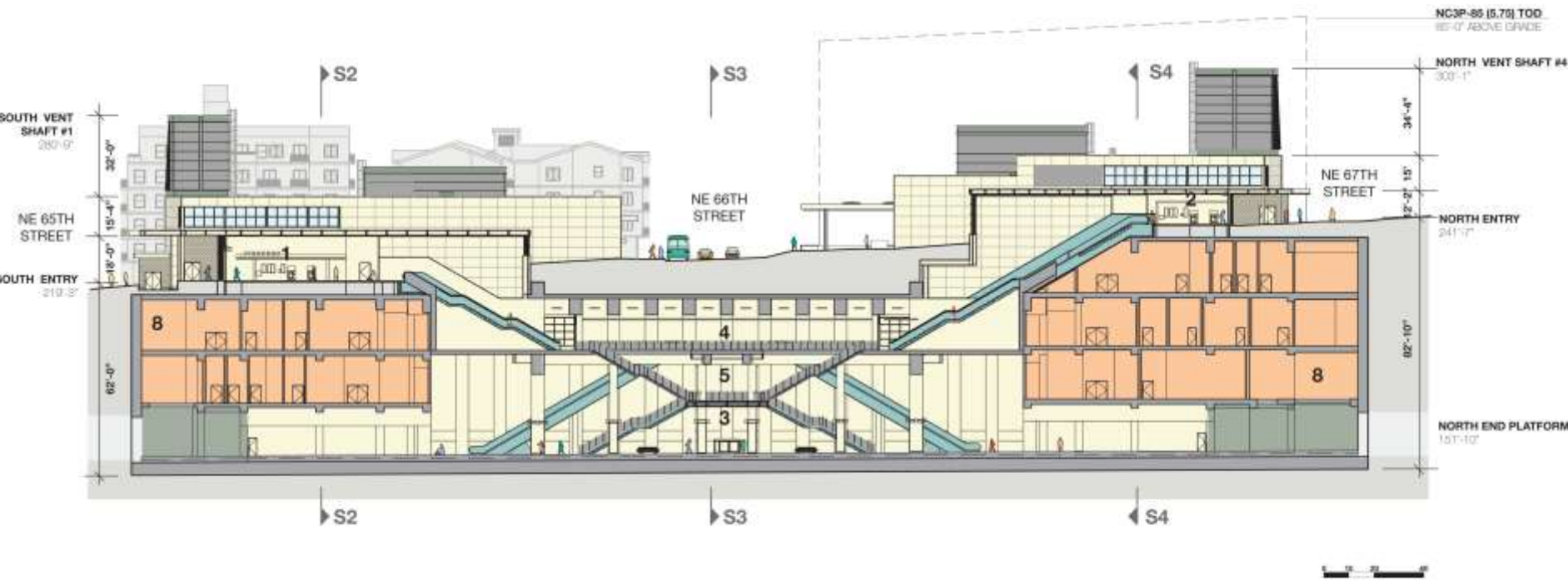
# Grade Level Plan – South Entry



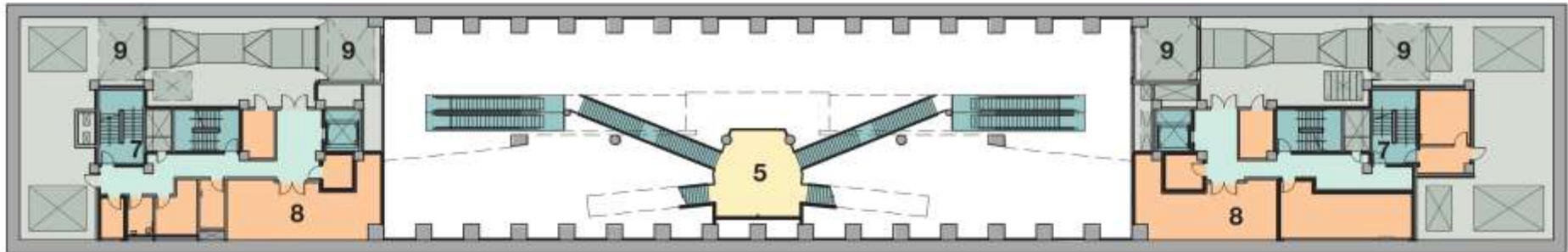
# Grade Level Plan – North Entry



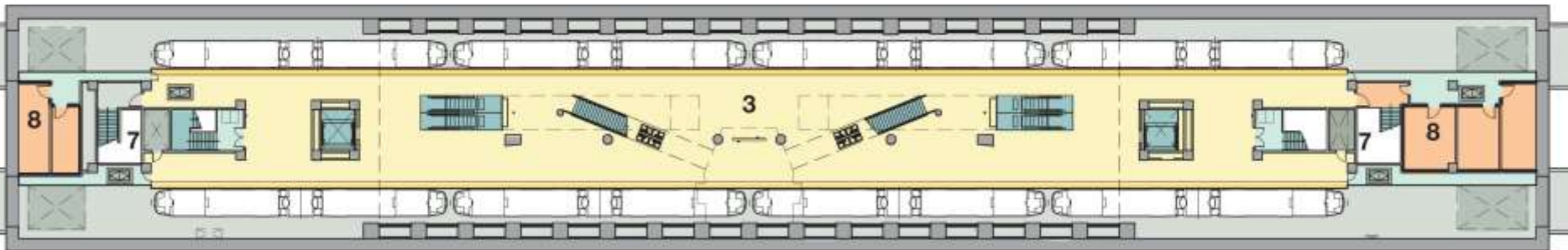
# Longitudinal Section



# Basement/Platform Level Plans



Basement 3 Level



Platform Level



## Legend

|                       |                          |                     |                          |
|-----------------------|--------------------------|---------------------|--------------------------|
| 1 - South Entry Lobby | 4 - Patron Landing       | 7 - Egress Stairs   | 10 - Public Plaza        |
| 2 - North Entry Lobby | 5 - Patron Stair Landing | 8 - Ancillary Rooms | 11 - Covered Entry Porch |
| 3 - Platform          | 6 - Bicycle Storage      | 9 - Shafts          |                          |

# Elevation at 12<sup>th</sup> Ave NE Looking West



# NE 65<sup>th</sup> St. Looking North



# NE 66<sup>th</sup> St. Looking South



20'-4"

16'-9"

20'-6"



# NE 66<sup>th</sup> St. Looking North





# NE 67<sup>th</sup> St. Looking South



# Perspective View

## 12<sup>th</sup> Ave NE Looking NW



# Perspective View

## 12<sup>th</sup> Ave NE Looking Southwest



# Perspective View

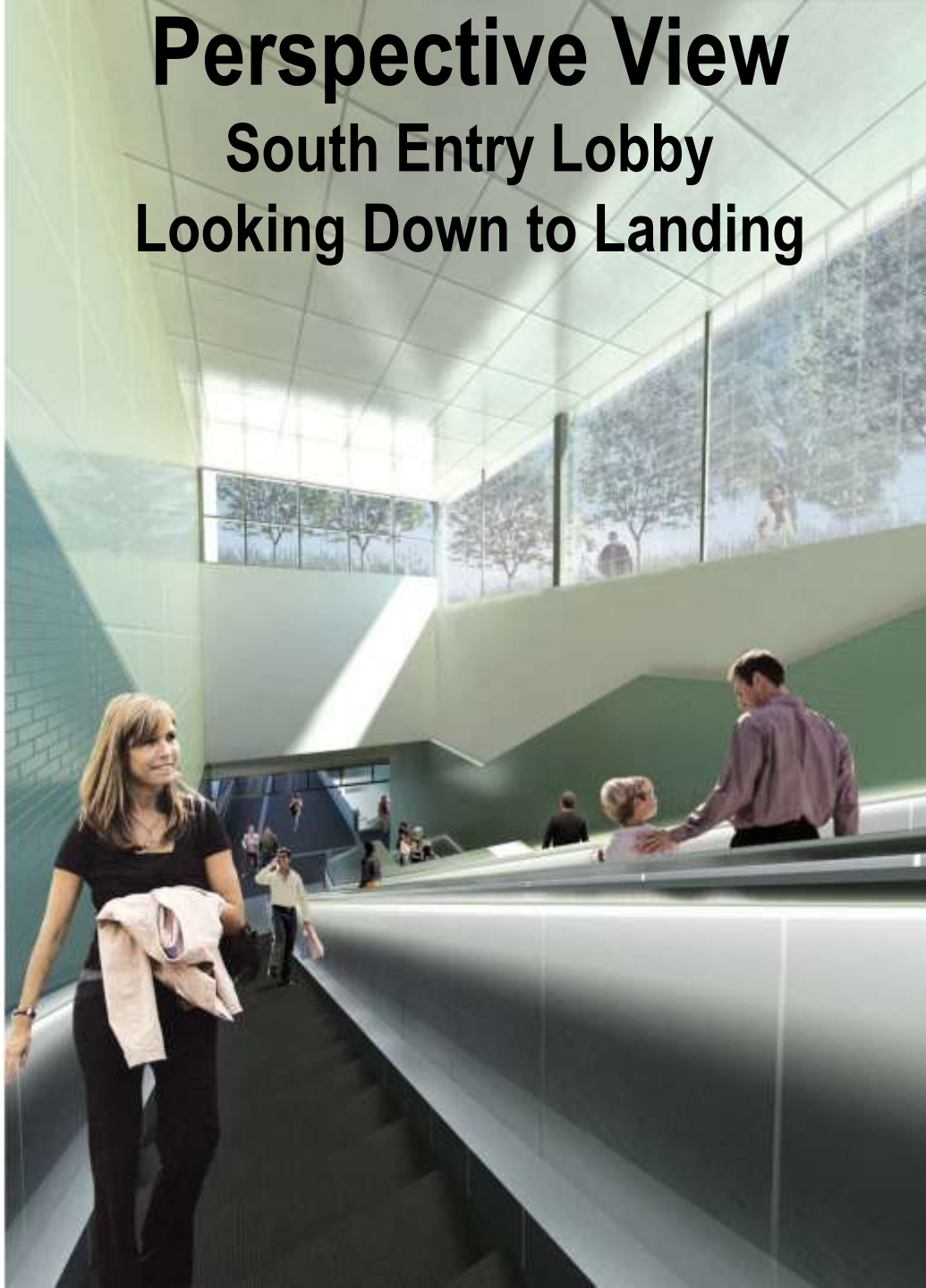
## South Entry Lobby



# Perspective View

## South Entry Lobby

### Looking Down to Landing



# Perspective View

## From Landing Looking Down to Platform



# Perspective View Platform

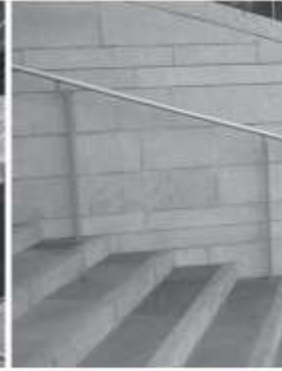


# Urban Elements

EDGE INTERRUPTIONS



RAILINGS



BYCICLE FACILITIES



SURFACE INTERRUPTION



STEPS



SEATING



UNDERSTORY PLANTING





# Tree Species

AUTUMN BRILLIANCE SERVICEBERRY



DE CROOT LITTLE - LEAF LINDEN

KATSURA TREE

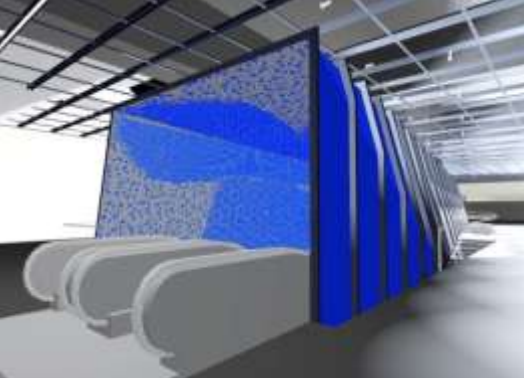


VENUS DOGWOOD



VINE MAPLE

# Start



# Image of Past Work

## R&R Studios



# Image of Past Work

## R&R Studios



# Image of Past Work

## R&R Studios



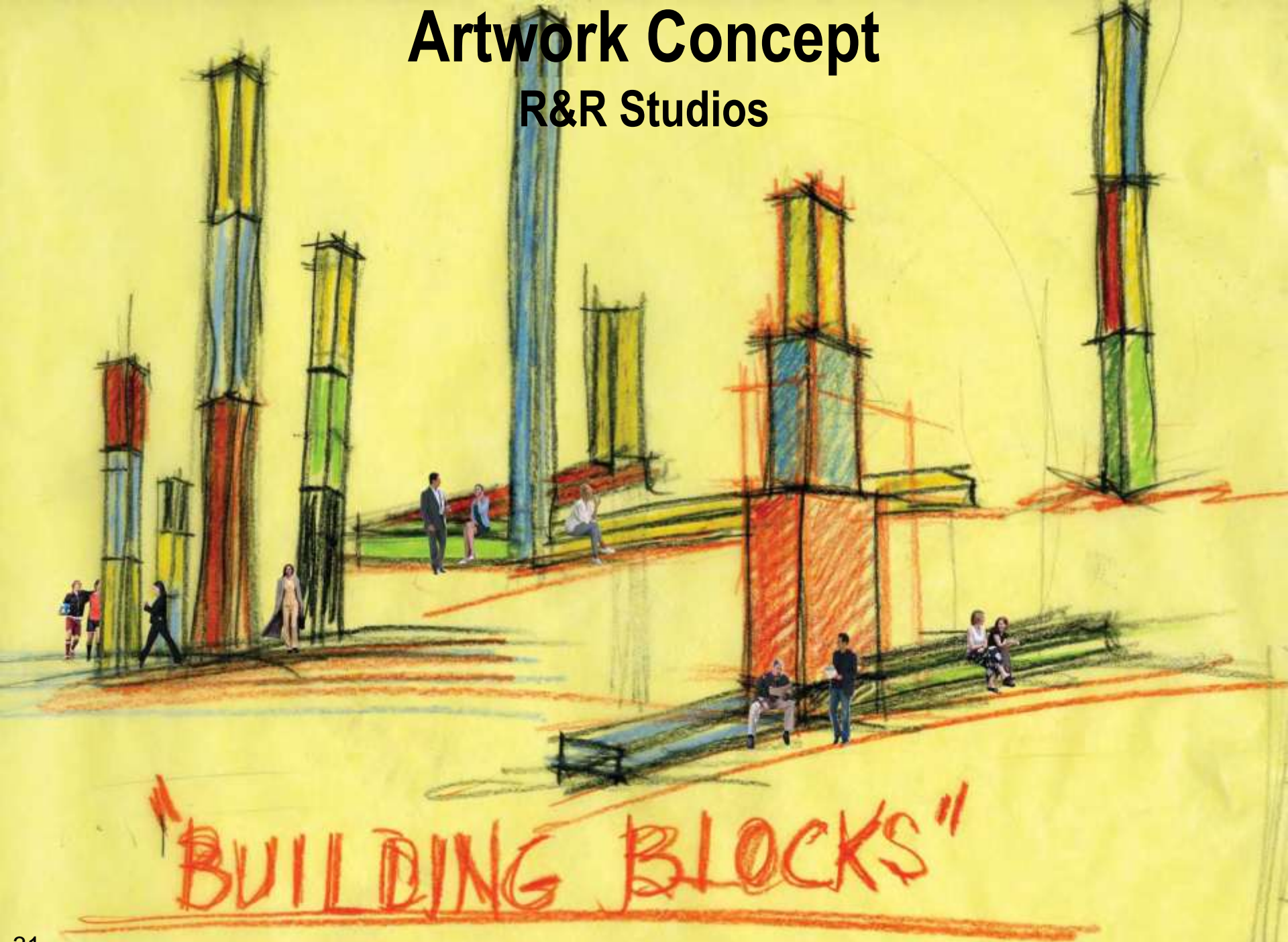
# Artwork Concept

## R&R Studios



# Artwork Concept

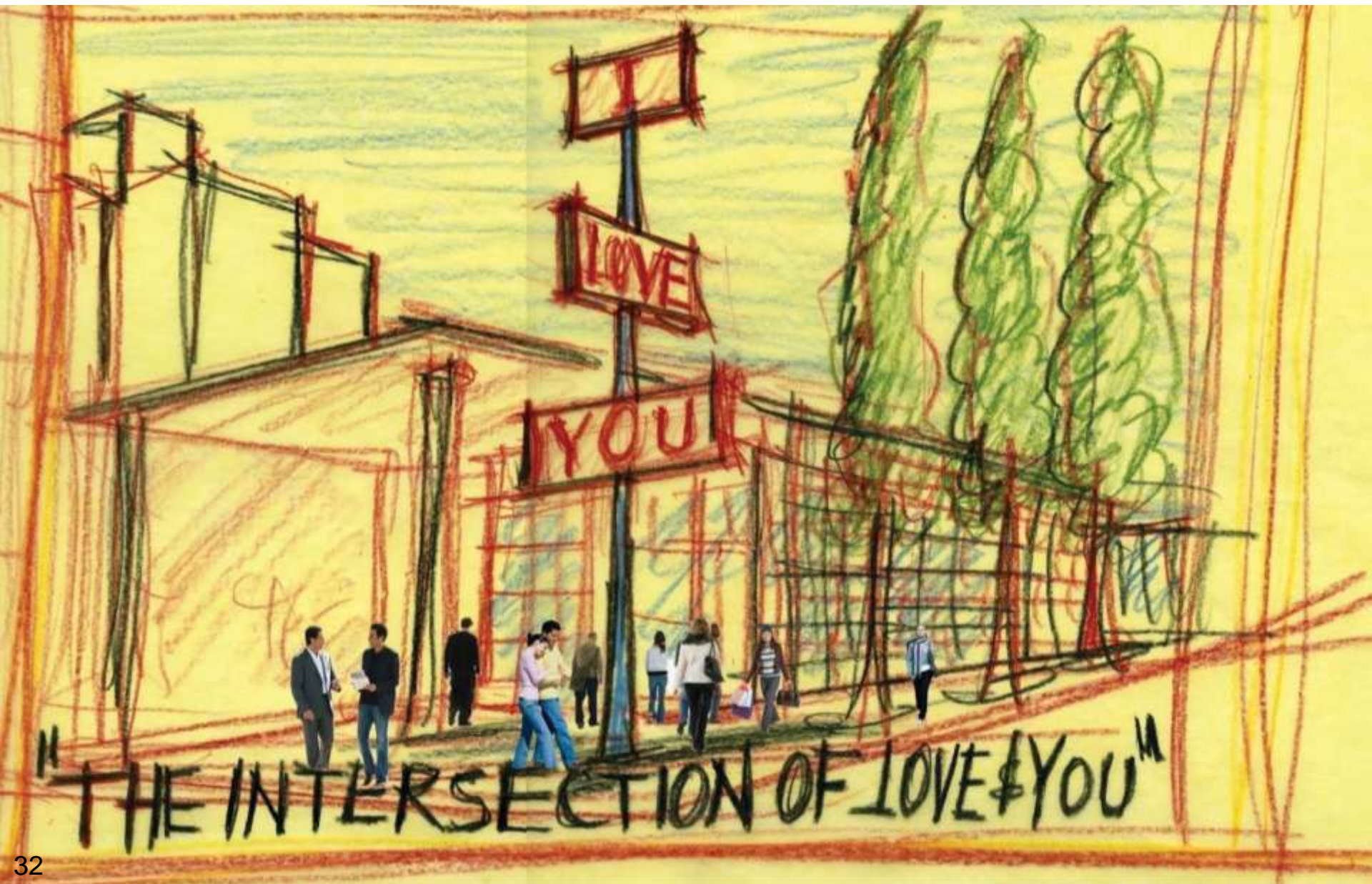
## R&R Studios



"BUILDING BLOCKS"

# Artwork Concept

## R&R Studios





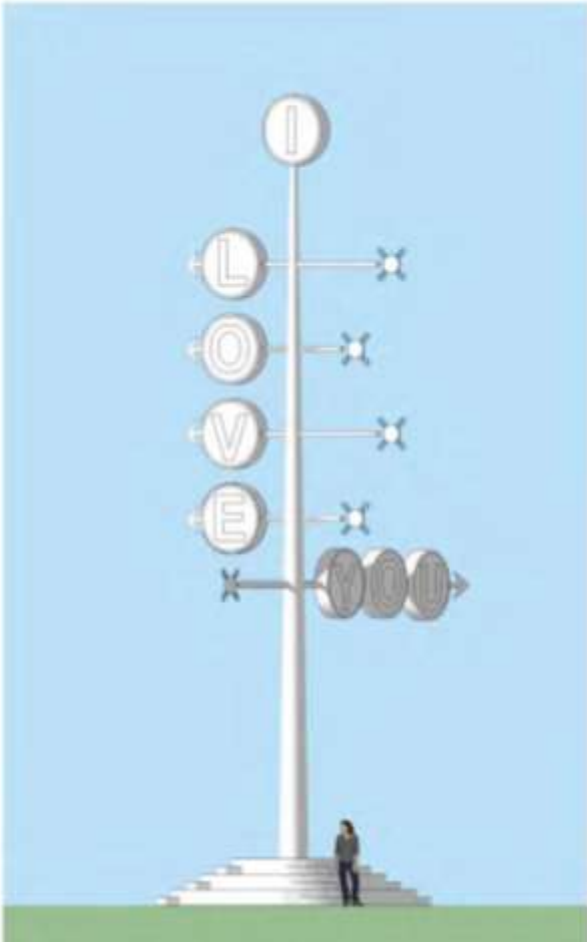
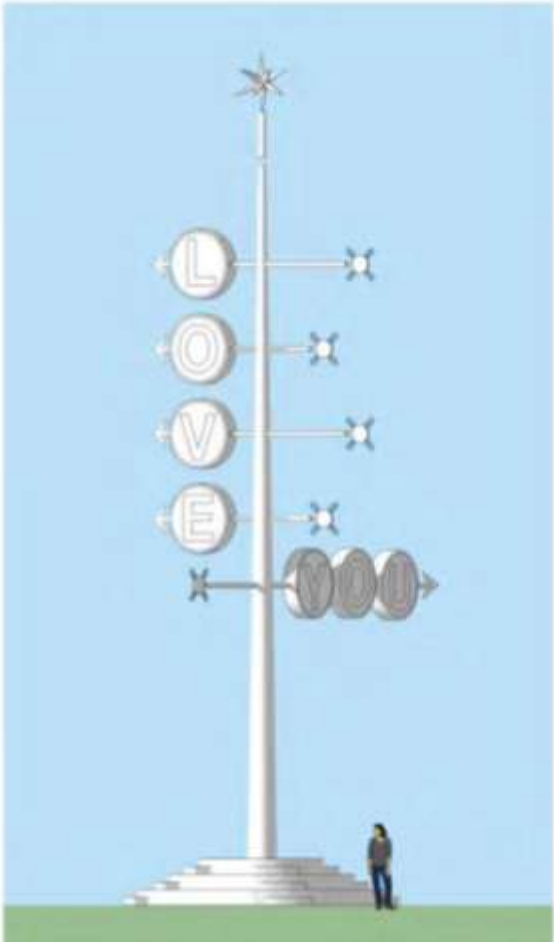
# Artwork Concept

## R&R Studios



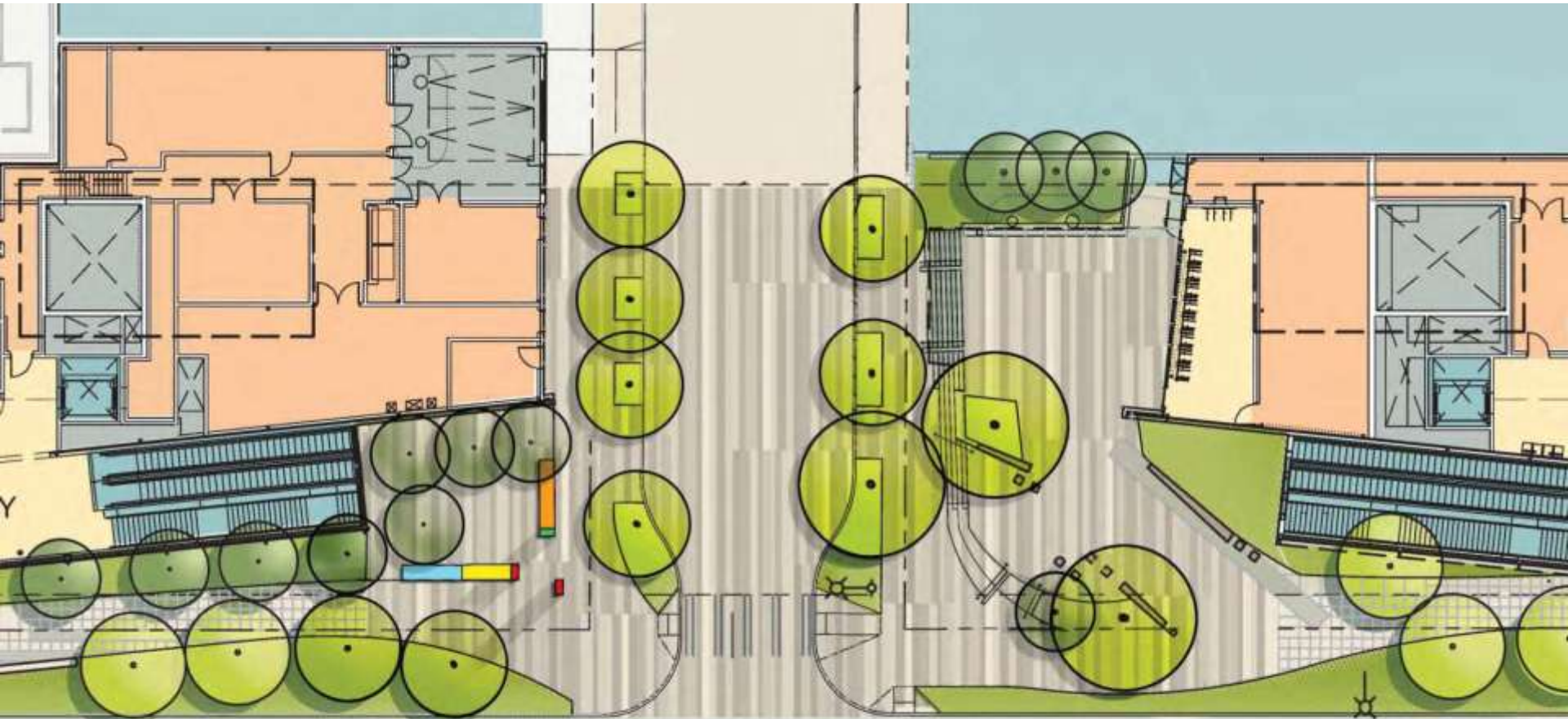
# Artwork Concept

## R&R Studios



# Artwork Concept

## R&R Studios



12TH AVENUE NE

# Artwork Concept

## R&R Studios



# Artwork Concept

## R&R Studios



# Artwork Concept

## R&R Studios



# Image of Past Work

Luca Buvoli



# Images of Past Work

Luca Buvoli





# Image of Past Work

Luca Buvoli



# Image of Past Work

Luca Buvoli



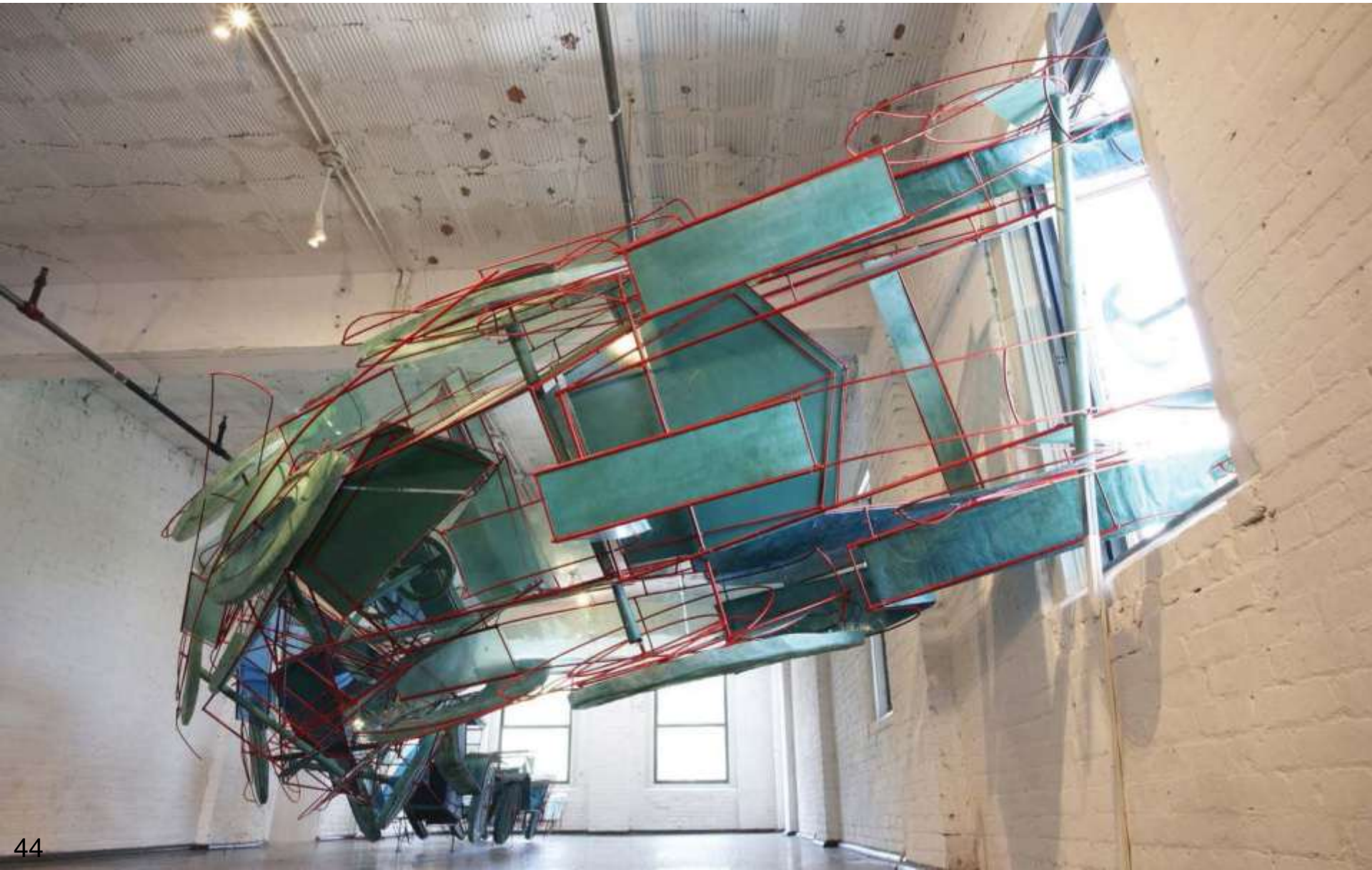
# Image of Past Work

Luca Buvoli



# Image of Past Work

Luca Buvoli



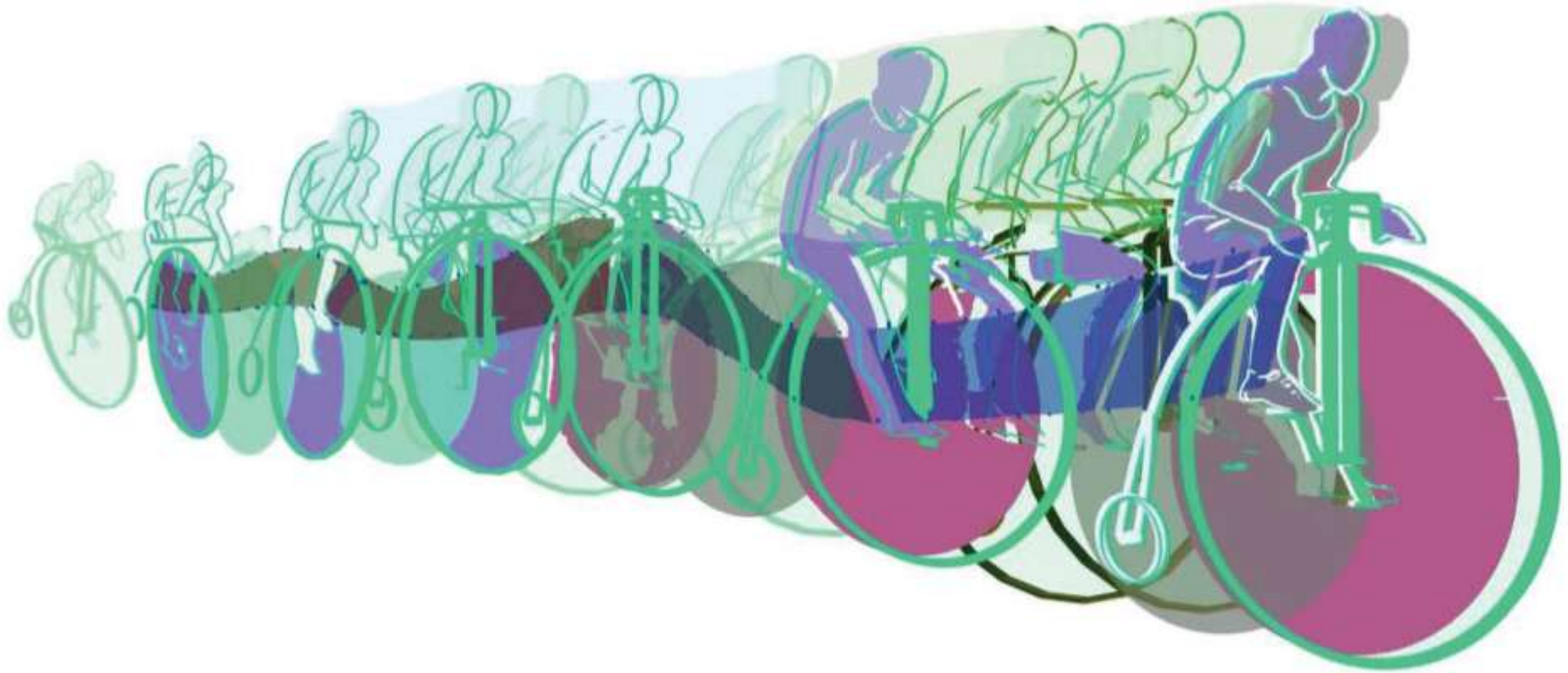
# Image of Past Work

Luca Buvoli



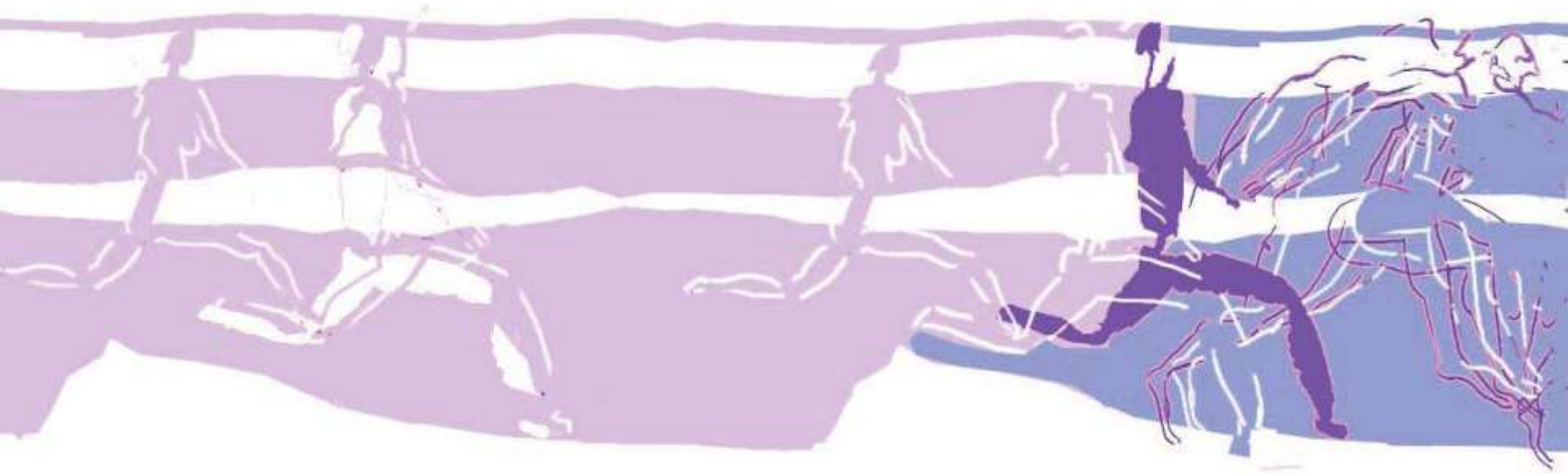
# Artwork Concept

Luca Buvoli



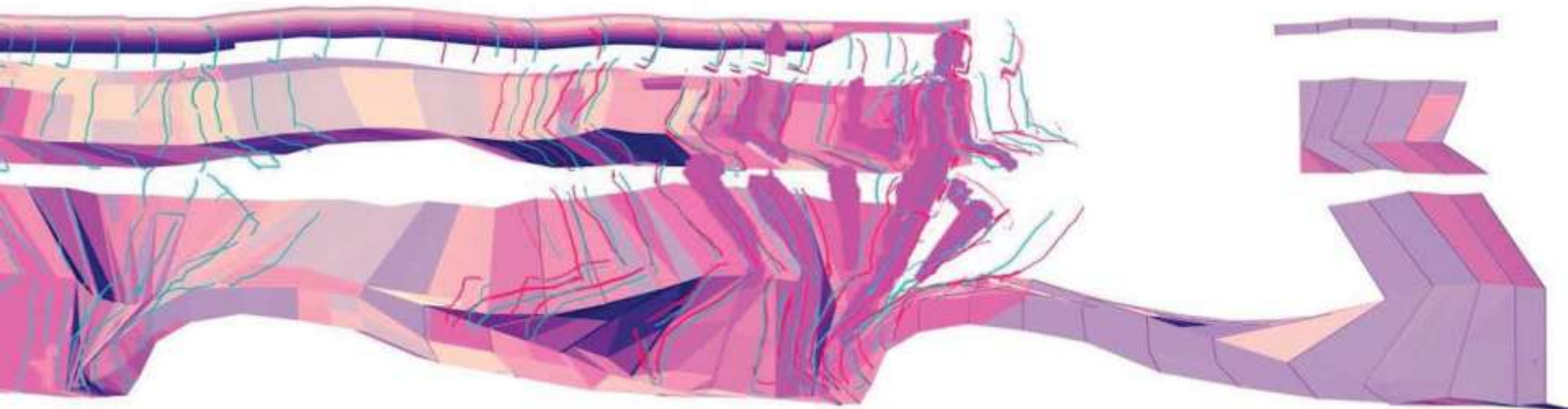
# Artwork Concept

Luca Buvoli



# Artwork Concept

Luca Buvoli





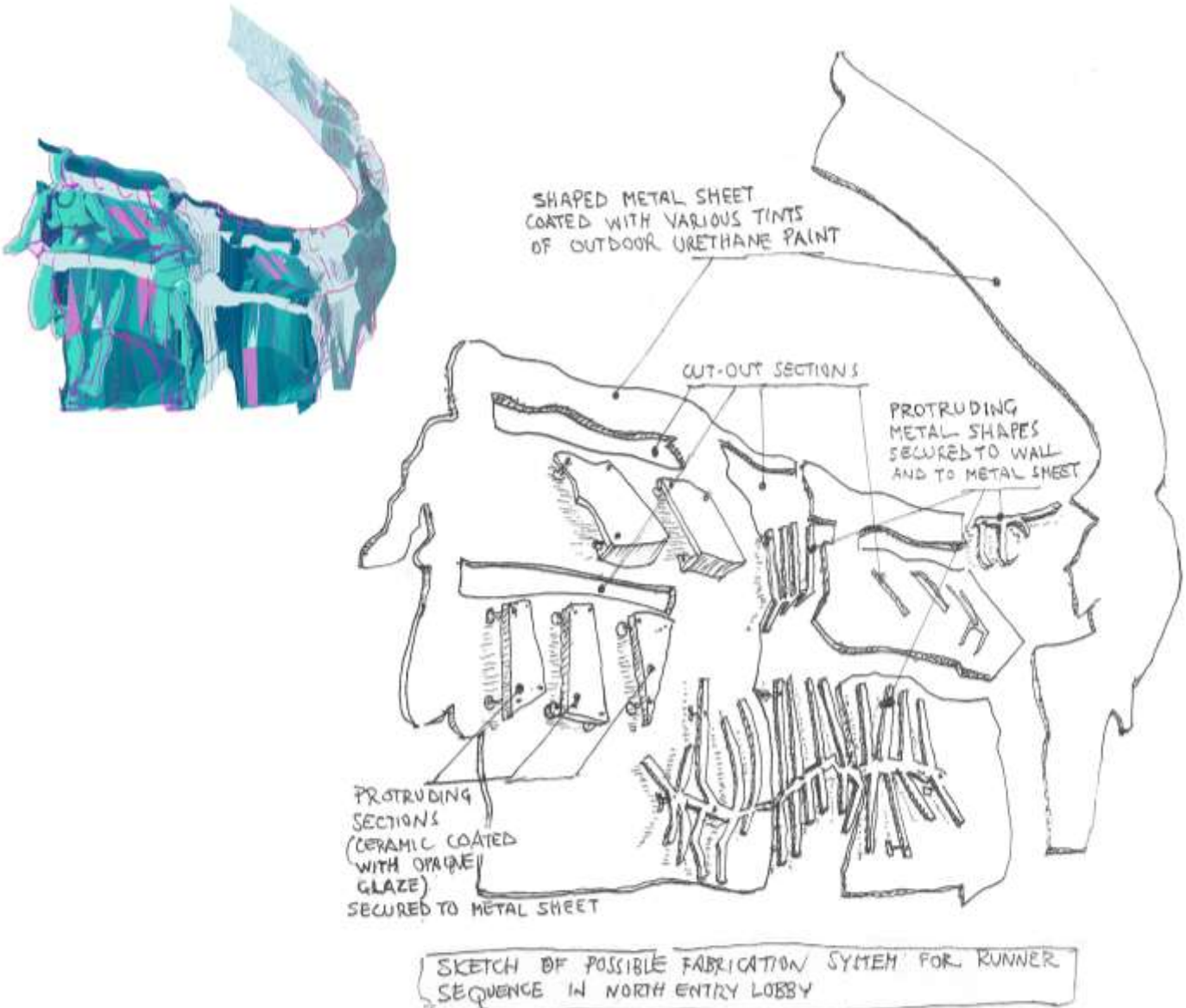
# Artwork Concept

Luca Buvoli



# Artwork Concept

## Luca Buvoli



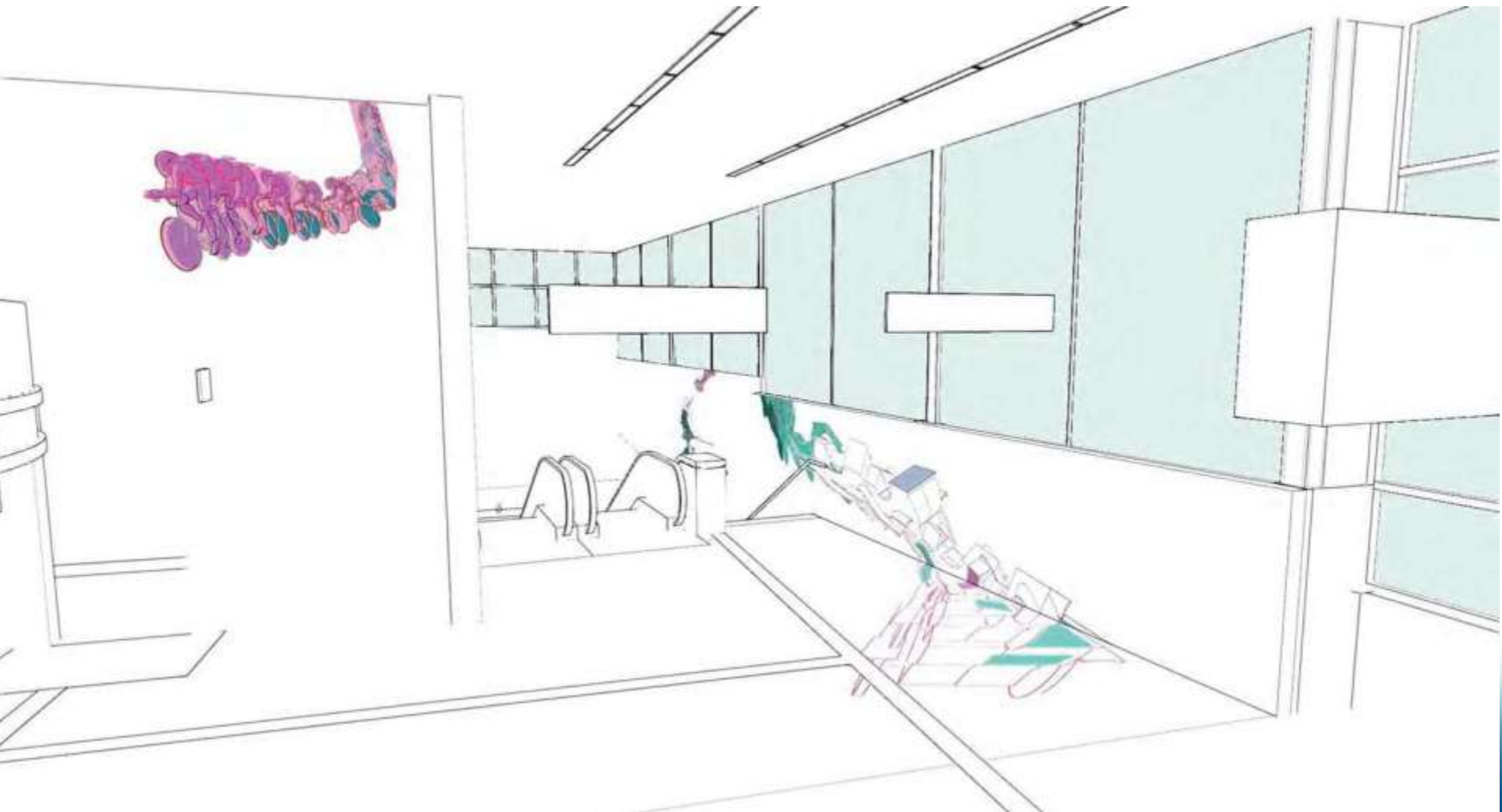
# Artwork Concept

Luca Buvoli



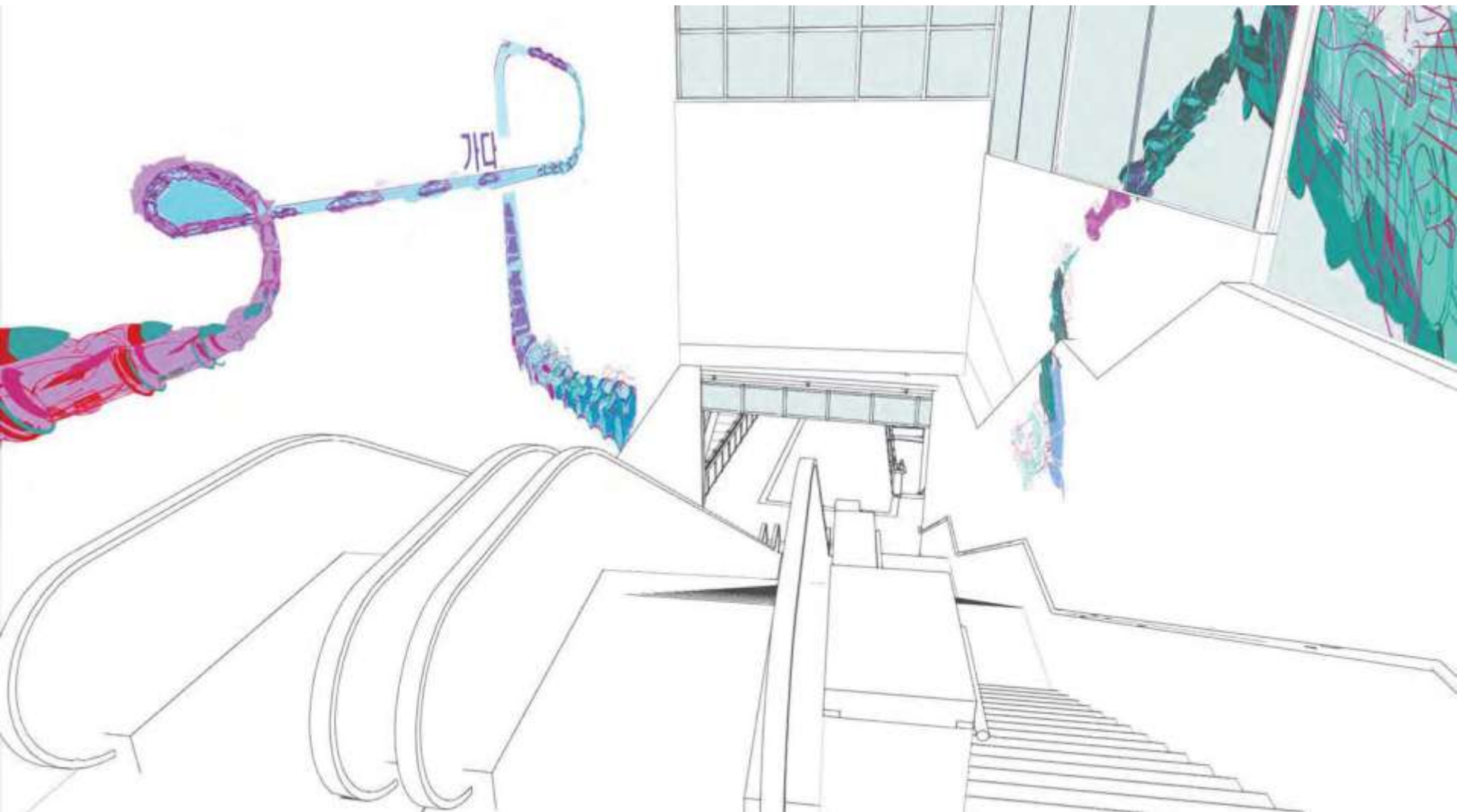
# Artwork Concept

## Luca Buvoli



# Artwork Concept

Luca Buvoli



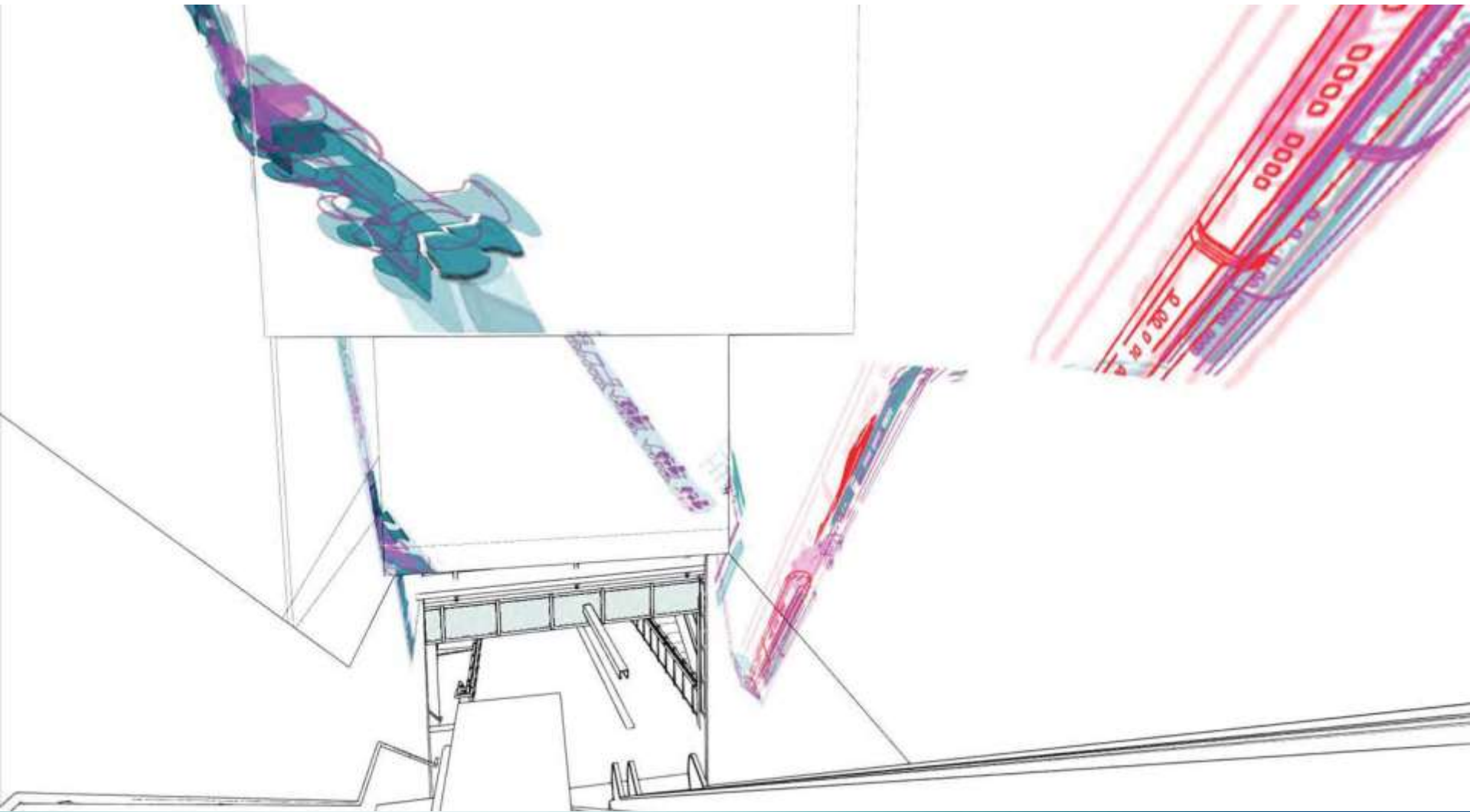
# Artwork Concept

Luca Buvoli



# Artwork Concept

## Luca Buvoli



# Artwork Concept

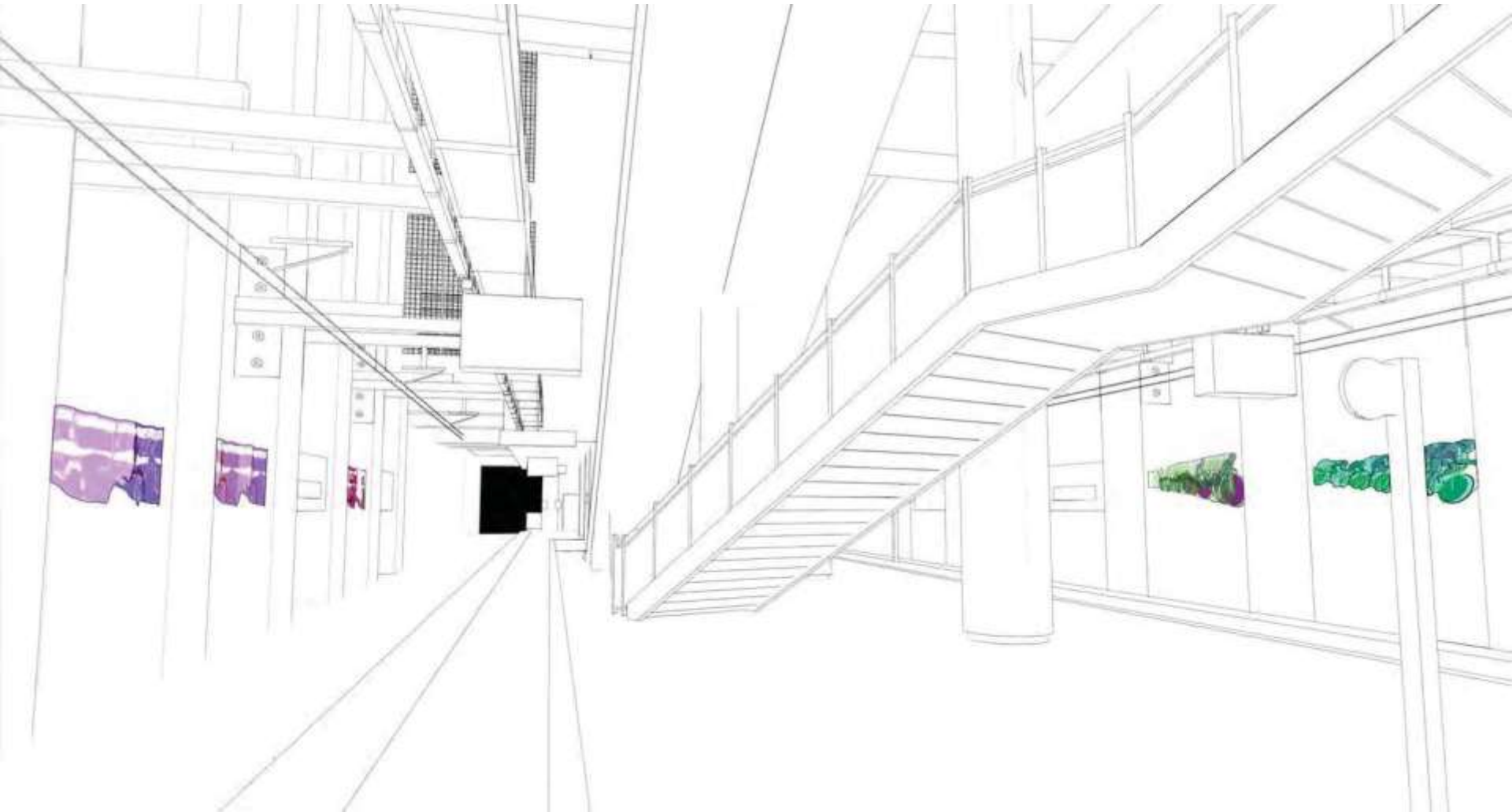
## Luca Buvoli





# Artwork Concept

Luca Buvoli



# Questions?



# Project Next Steps



- Station naming
- Project staff in neighborhood
- Standard Radio de-construction – spring/summer
- Townhouses – buyer found
- Construction Open House – summer
- Demolition starts – late summer



# Get Involved and Stay Informed



- Attend Final Design Open Houses
  - Learn more about your neighborhood station's design including bike facilities, pedestrian and bike connections and public art
- Sign Up to Receive Email Updates
  - [www.soundtransit.org/subscribe](http://www.soundtransit.org/subscribe)
- Sound Transit Website
  - [www.soundtransit.org/northlink](http://www.soundtransit.org/northlink)
- Contact Ellen Blair:
  - 206.398.5043
  - [northlink@soundtransit.org](mailto:northlink@soundtransit.org)

