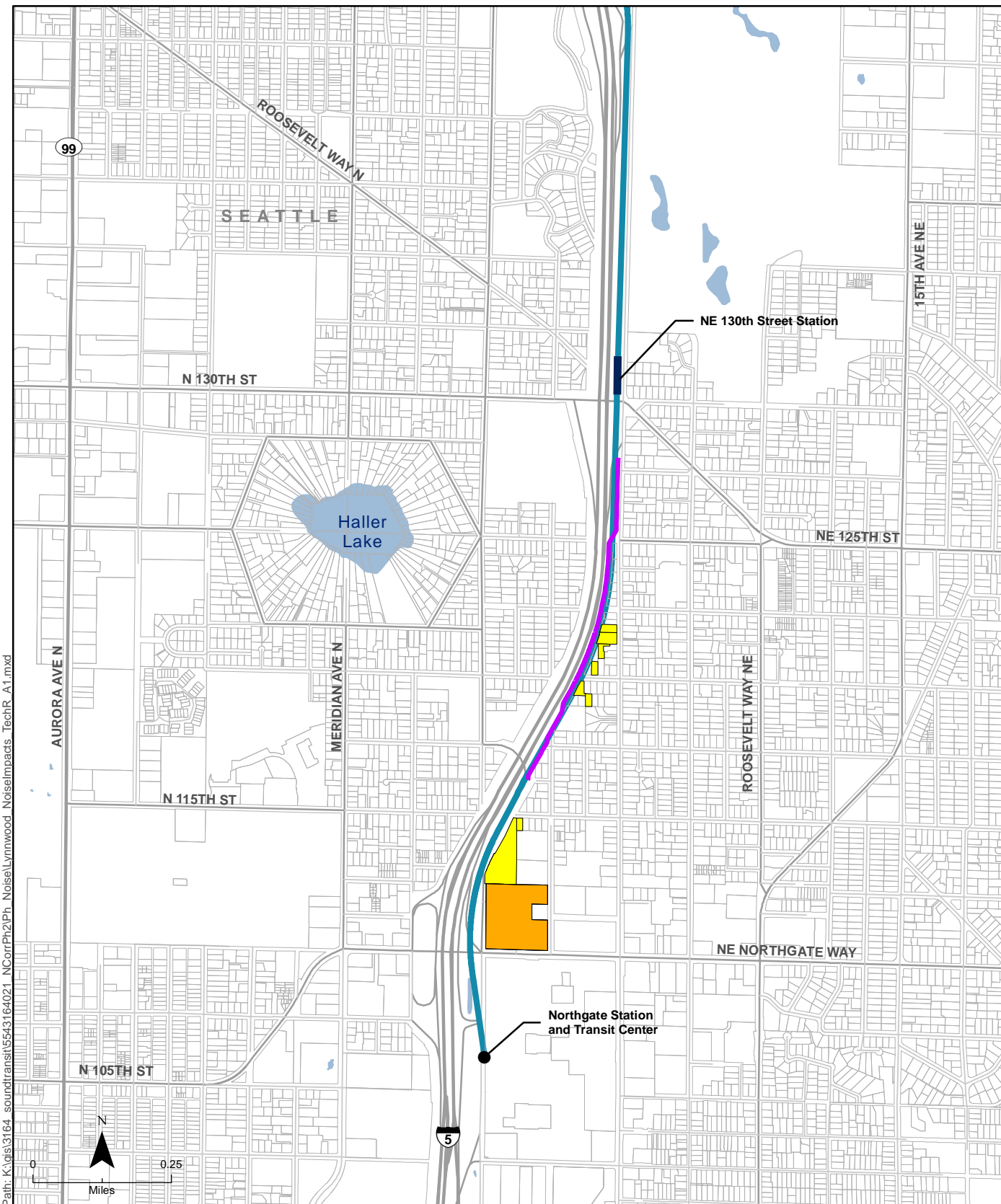


ATTACHMENT C

Detailed Noise Analysis Maps



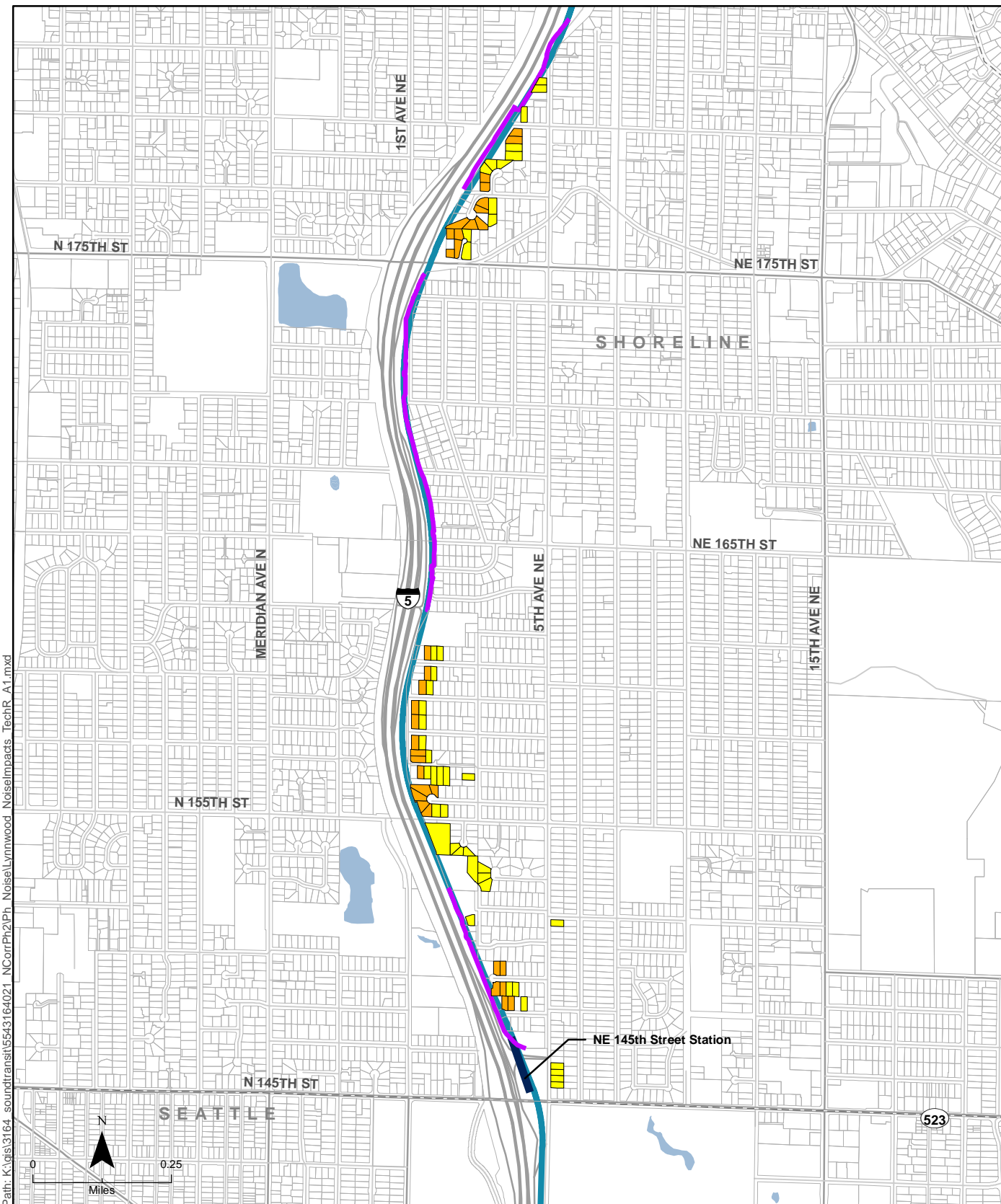
Path: K:\gis\3164_soundtransit\5543164021_NCorrPh2\Ph_Noise\Lynnwood_NoiseImpacts_TechR_A1.mxd

Data Sources: (King County, Snohomish County, WSDOT, Sound Transit)

- | | | |
|---|---------------------|--------------|
| Potential Noise Impact | Existing Sound Wall | Roadway |
| Moderate Noise Impact Requiring Mitigation | Alternative A1 | Local Street |
| Park and Ride Moderate Noise Impact Requiring Mitigation | Station Location | Waterbody |
| Severe Noise Impact Requiring Mitigation | Parcel Boundary | |
| Moderate Residual Noise Impact Requiring Additional Mitigation (sound insulation) | | |

Figure C-1a
Potential Noise Impacts
Alternative A1

Lynnwood Link Extension



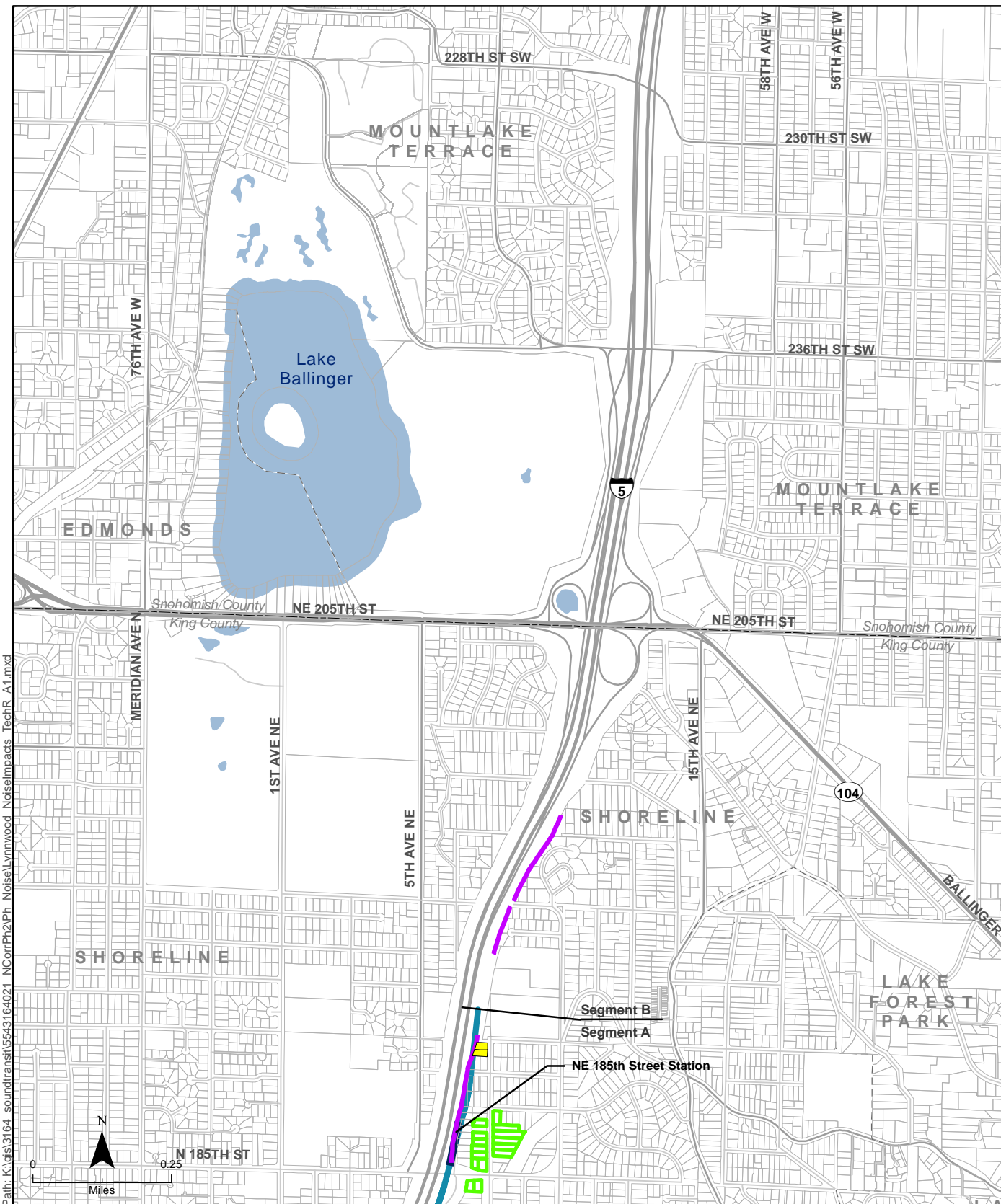
Path: K:\gis\3164_soundtransit\5543164021_NCorrPh2\Ph_Noise\Lynnwood_NoiseImpacts_TechR_A1.mxd

Data Sources: (King County, Snohomish County, WSDOT, Sound Transit)

- | | | |
|---|---------------------|--------------|
| Potential Noise Impact | Existing Sound Wall | Roadway |
| Moderate Noise Impact Requiring Mitigation | Alternative A1 | Local Street |
| Park and Ride Moderate Noise Impact Requiring Mitigation | Station Location | Waterbody |
| Severe Noise Impact Requiring Mitigation | Parcel Boundary | |
| Moderate Residual Noise Impact Requiring Additional Mitigation (sound insulation) | | |

Figure C-1b
Potential Noise Impacts
Alternative A1

Lynnwood Link Extension

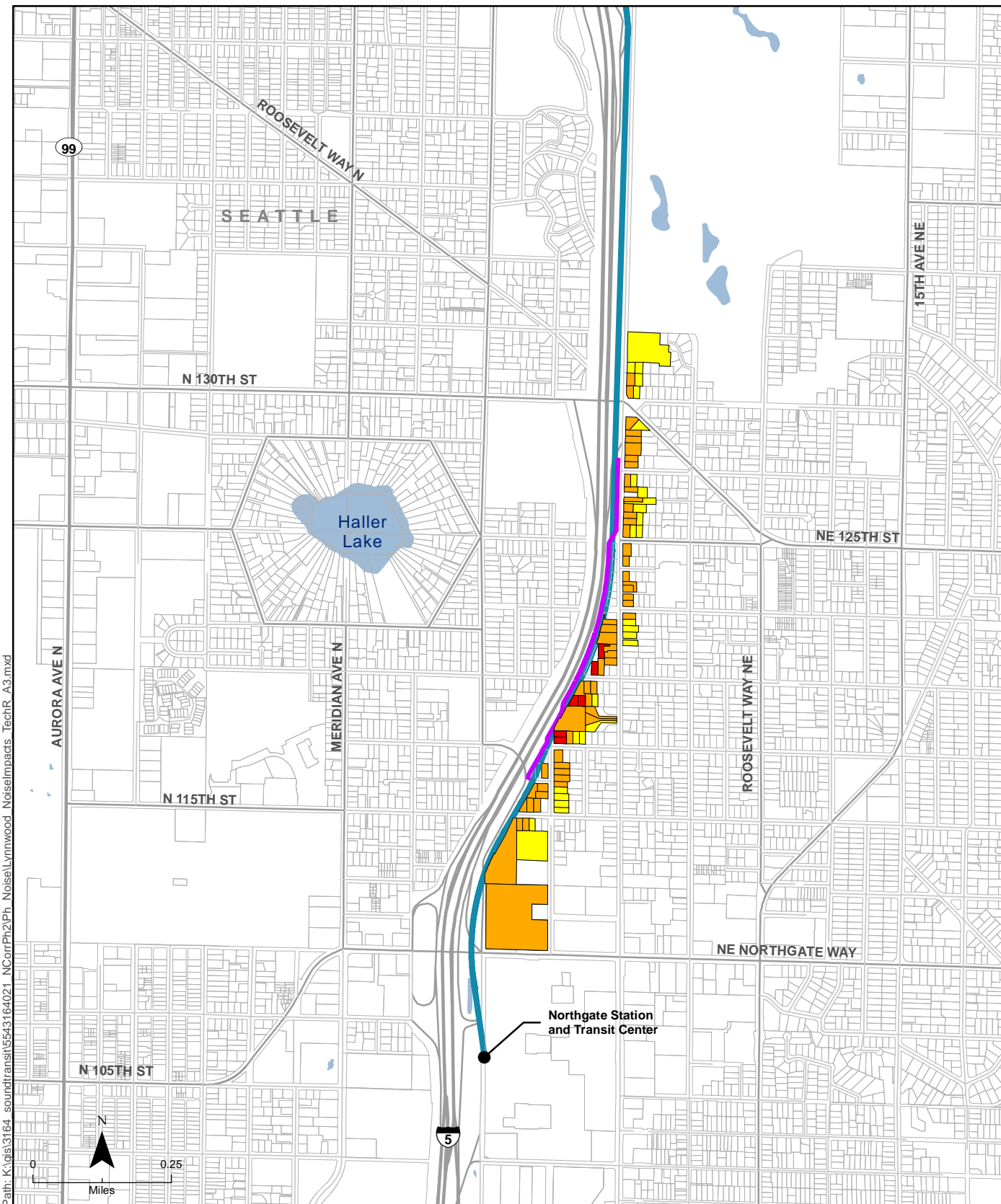


Path: K:\gis\3164_soundtransit\543164021_NCorrPh2\Ph_Noise\Lynnwood_NoiseImpacts_TechR_A1.mxd

Data Sources: (King County, Snohomish County, WSDOT, Sound Transit)

- | | | |
|---|---------------------|--------------|
| Potential Noise Impact | Existing Sound Wall | Roadway |
| Moderate Noise Impact Requiring Mitigation | Alternative A1 | Local Street |
| Park and Ride Moderate Noise Impact Requiring Mitigation | Station Location | Waterbody |
| Severe Noise Impact Requiring Mitigation | Parcel Boundary | |
| Moderate Residual Noise Impact Requiring Additional Mitigation (sound insulation) | | |

Figure C-1c
Potential Noise Impacts
Alternative A1



Path: K:\gis\3164_soundtransit\5543164021_NCorrPh2\Ph_Noise\Lynnwood_NoiseImpacts_TechR_A3.mxd

Data Sources: (King County, Snohomish County, WSDOT, Sound Transit)

- | | | |
|---|---------------------|--------------|
| Potential Noise Impact | Existing Sound Wall | Roadway |
| Moderate Noise Impact Requiring Mitigation | Alternative A3 | Local Street |
| Park and Ride Moderate Noise Impact Requiring Mitigation | Station Location | Waterbody |
| Severe Noise Impact Requiring Mitigation | Parcel Boundary | |
| Moderate Residual Noise Impact Requiring Additional Mitigation (sound insulation) | | |

Figure C-2a
Potential Noise Impacts
Alternative A3

Lynnwood Link Extension