

Path: K:\gis\3164_soundtransit\5543164021_NCorrPh2\Ph_Noise\Lynnwood_NoiseImpacts_TechR_A3.mxd

Data Sources: (King County, Snohomish County, WSDOT, Sound Transit)

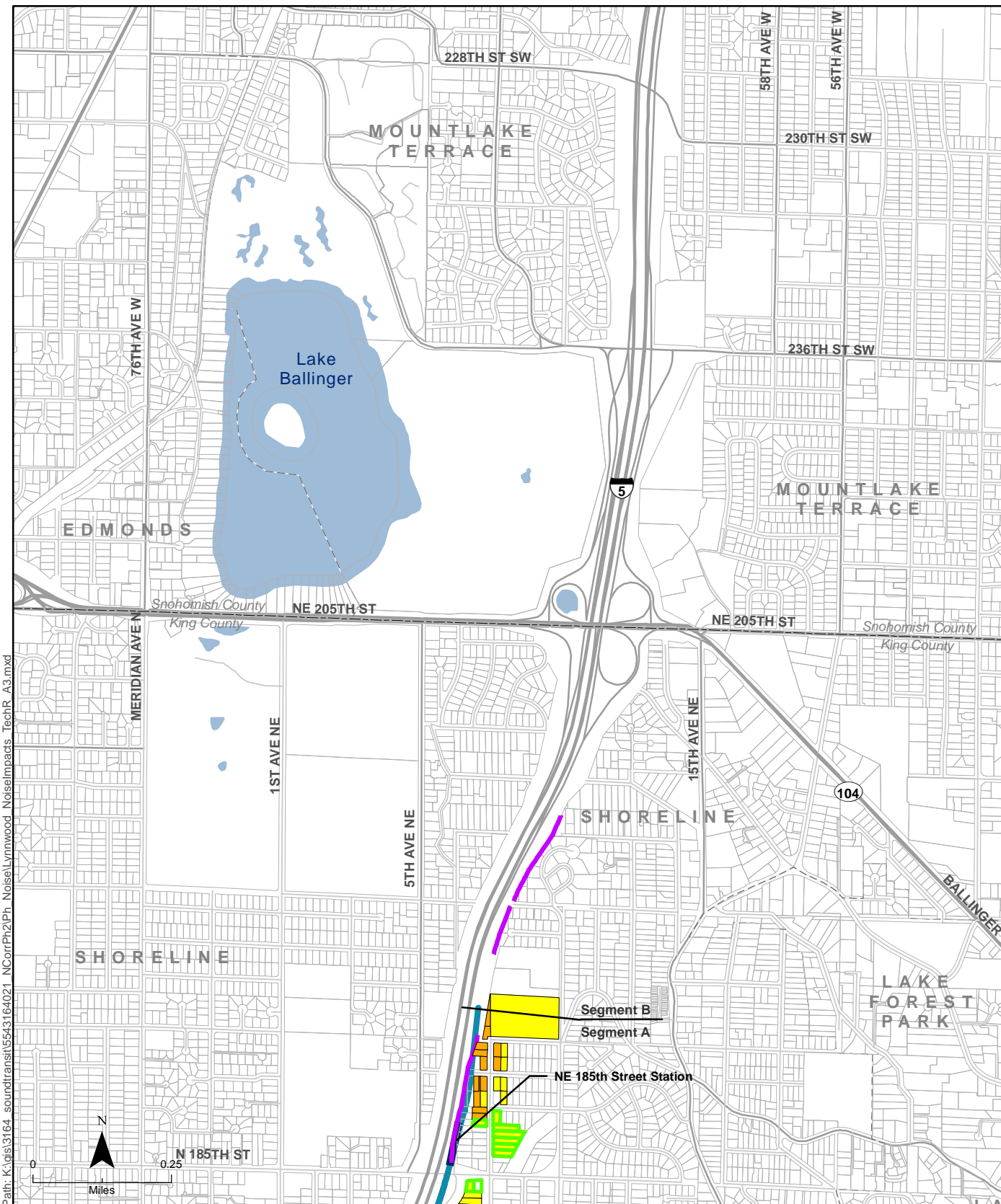
Potential Noise Impact

- Moderate Noise Impact Requiring Mitigation
- Park and Ride Moderate Noise Impact Requiring Mitigation
- Severe Noise Impact Requiring Mitigation
- Moderate Residual Noise Impact Requiring Additional Mitigation (sound insulation)

- Existing Sound Wall
- Alternative A3
- Station Location
- Parcel Boundary
- Roadway
- Local Street
- Waterbody

Figure C-2b
Potential Noise Impacts
Alternative A3

Lynnwood Link Extension



Path: K:\gis\3164_soundtransit\5543164021_NCorrPh2\Ph_Noise\Lynnwood_NoiseImpacts_TechR_A3.mxd

Data Sources: (King County, Snohomish County, WSDOT, Sound Transit)

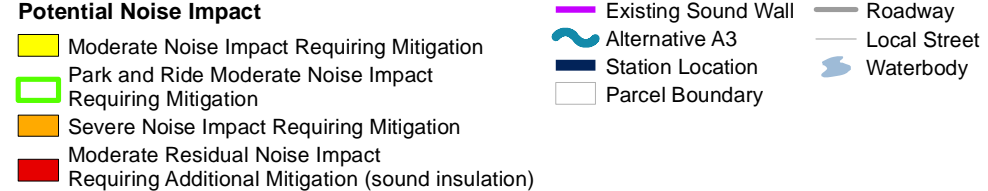
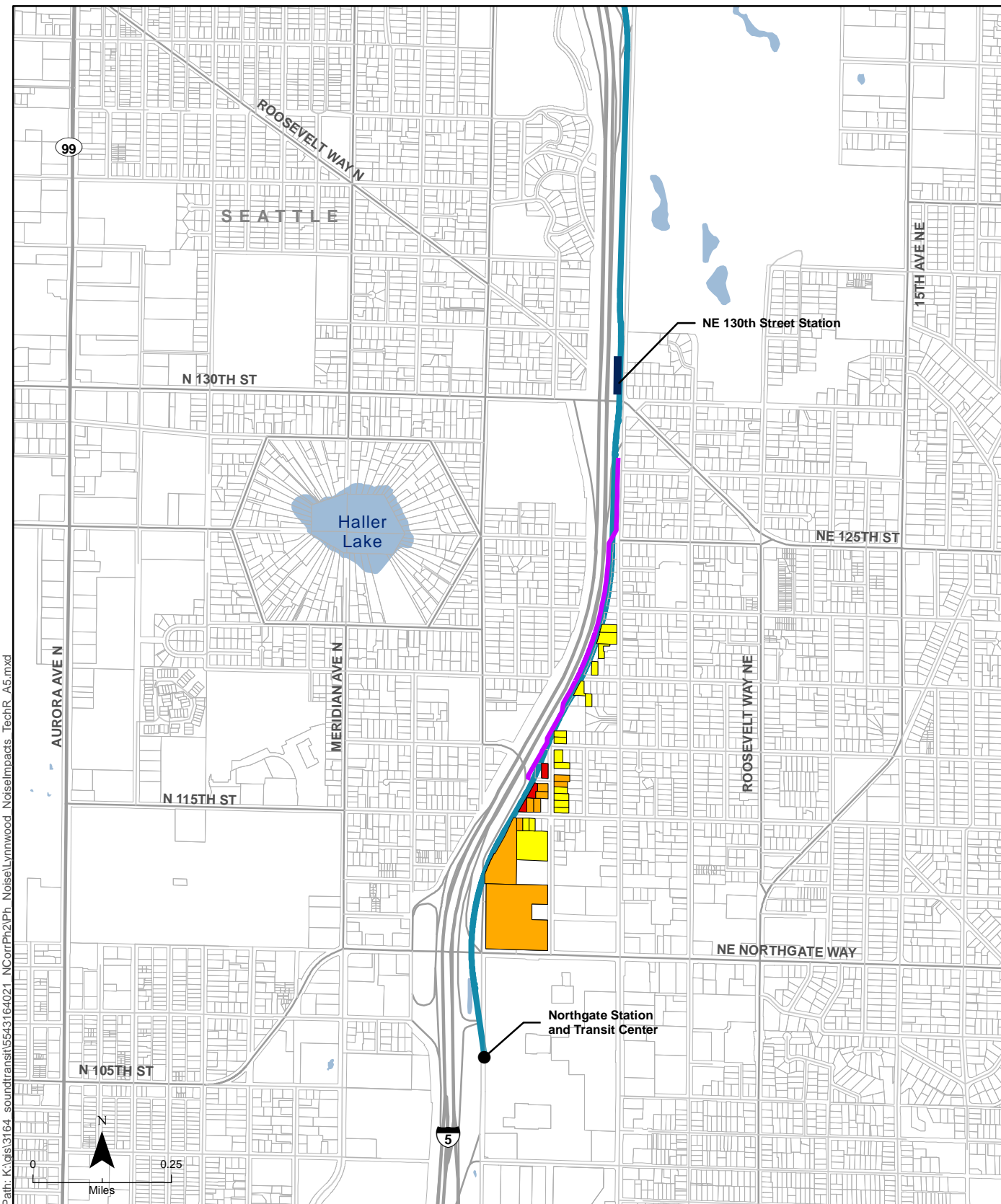


Figure C-2c
Potential Noise Impacts
Alternative A3



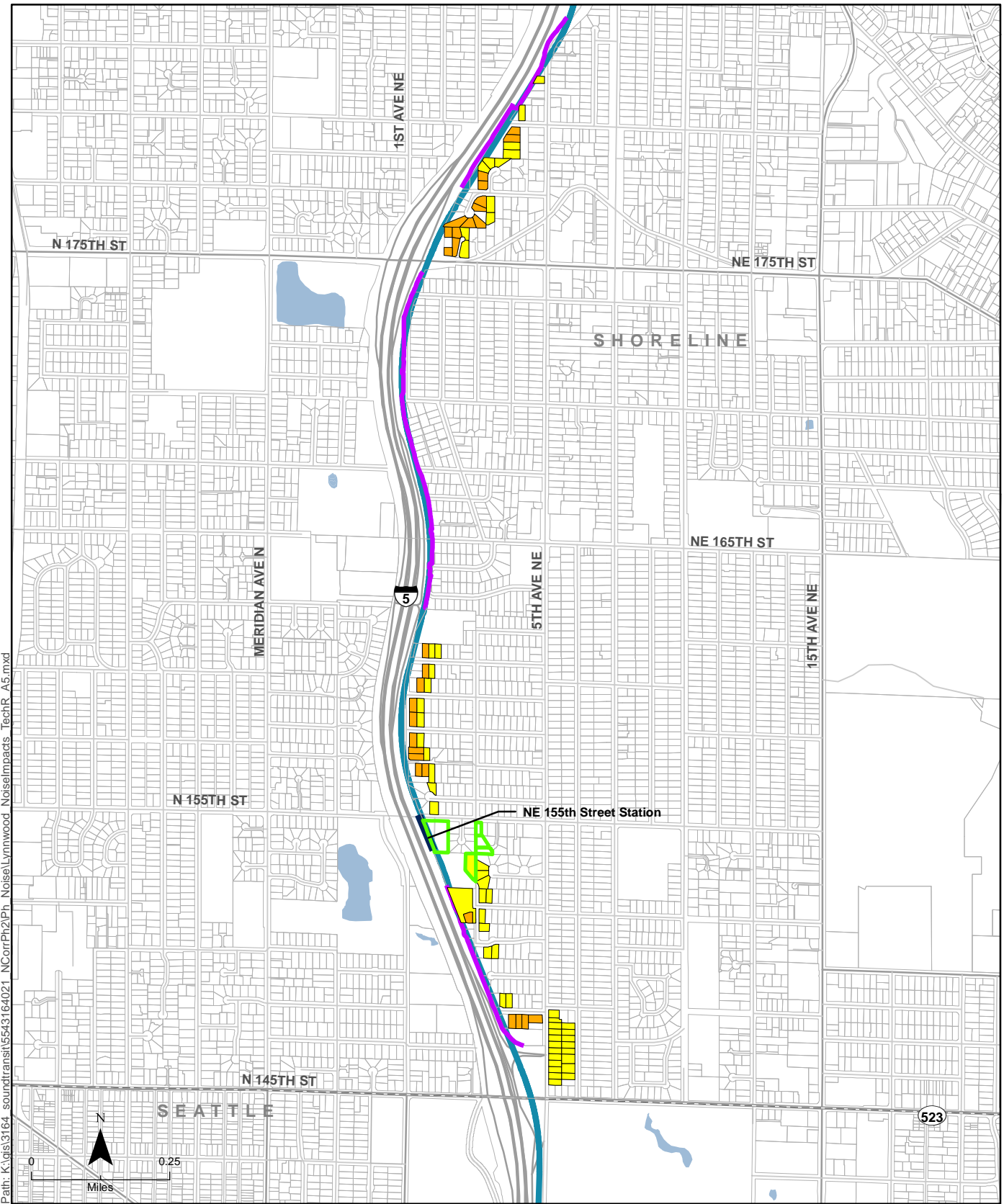
Path: K:\gis\3164_soundtransit\5543164021_NCorrPh2\Ph_Noise\Lynnwood_NoiseImpacts_TechR_A5.mxd

Data Sources: (King County, Snohomish County, WSDOT, Sound Transit)

- | | | |
|---|---------------------|--------------|
| Potential Noise Impact | Existing Sound Wall | Roadway |
| Moderate Noise Impact Requiring Mitigation | Alternative A5 | Local Street |
| Park and Ride Moderate Noise Impact Requiring Mitigation | Station Location | Waterbody |
| Severe Noise Impact Requiring Mitigation | Parcel Boundary | |
| Moderate Residual Noise Impact Requiring Additional Mitigation (sound insulation) | | |

Figure C-3a
Potential Noise Impacts
Alternative A5

Lynnwood Link Extension



Data Sources: (King County, Snohomish County, WSDOT, Sound Transit)

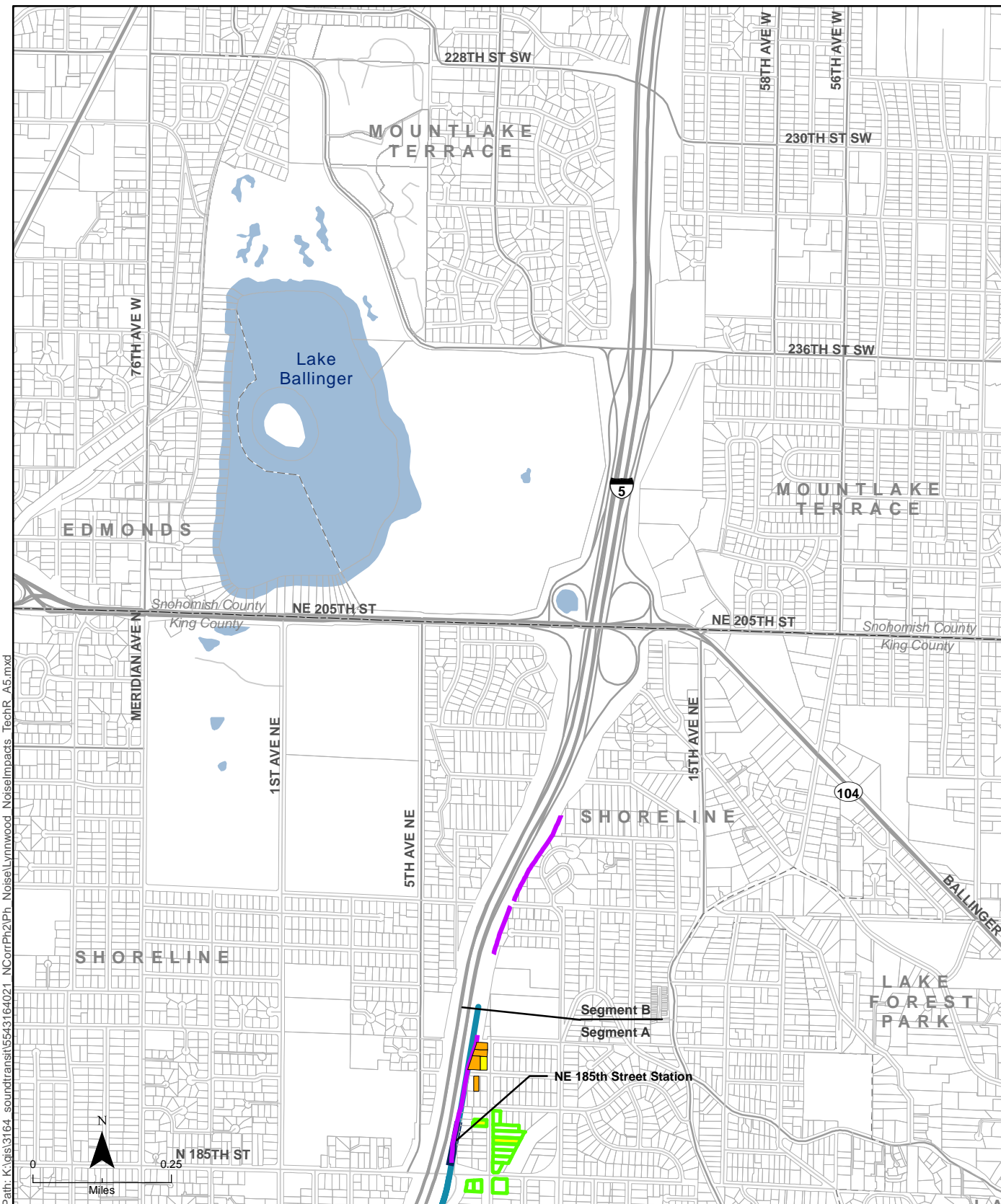
Potential Noise Impact

- Moderate Noise Impact Requiring Mitigation
- Park and Ride Moderate Noise Impact Requiring Mitigation
- Severe Noise Impact Requiring Mitigation
- Moderate Residual Noise Impact Requiring Additional Mitigation (sound insulation)

- Existing Sound Wall
- Alternative A5
- Station Location
- Parcel Boundary
- Roadway
- Local Street
- Waterbody

Figure C-3b
Potential Noise Impacts
Alternative A5

Lynnwood Link Extension



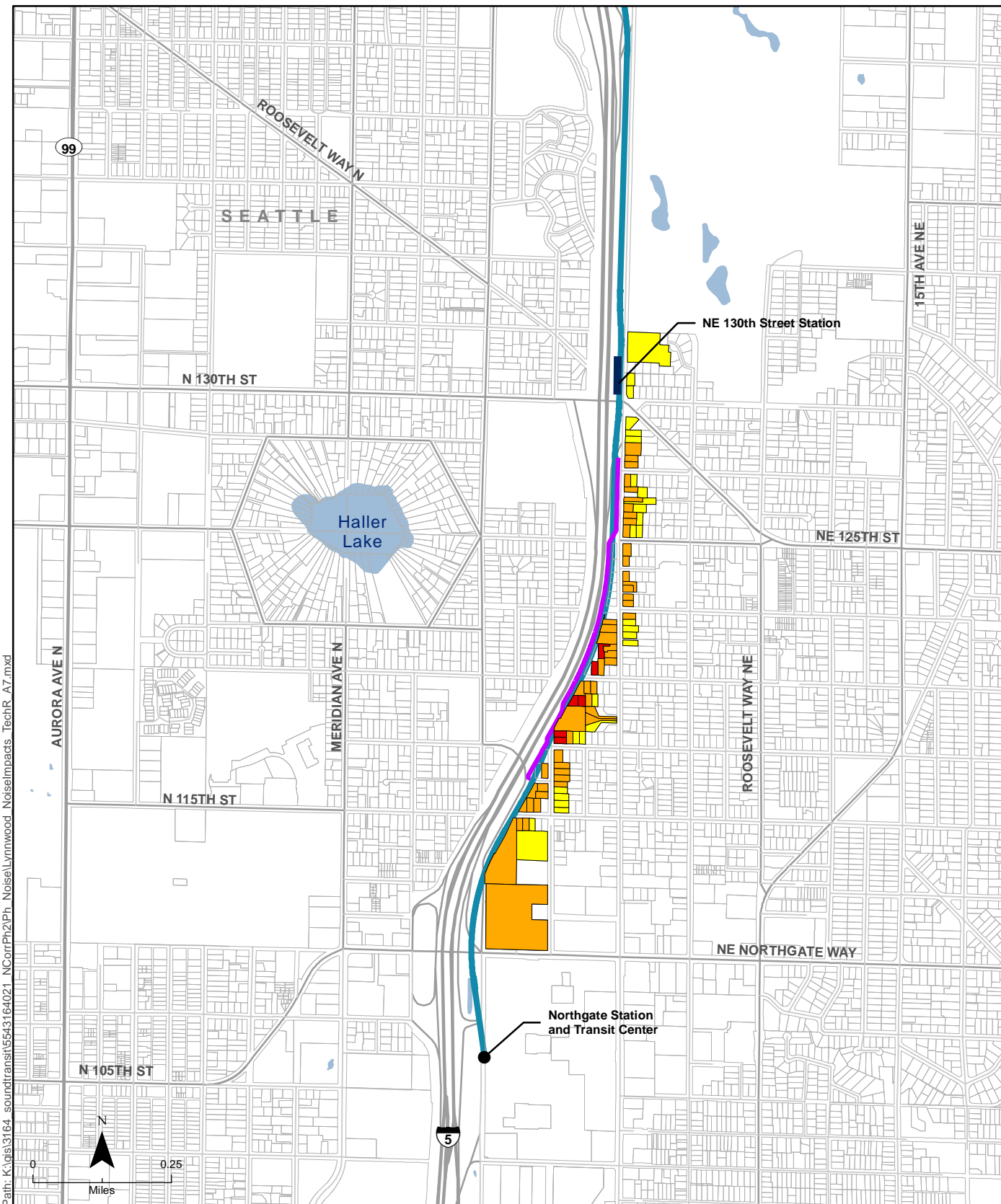
Path: K:\gis\3164_soundtransit\5543164021_NCorrPh2\Ph_Noise\Lynnwood_NoiseImpacts_TechR_A5.mxd

Data Sources: (King County, Snohomish County, WSDOT, Sound Transit)

- Potential Noise Impact**
- Moderate Noise Impact Requiring Mitigation
 - Park and Ride Moderate Noise Impact Requiring Mitigation
 - Severe Noise Impact Requiring Mitigation
 - Moderate Residual Noise Impact
 - Requiring Additional Mitigation (sound insulation)

- Existing Sound Wall
- Alternative A5
- Station Location
- Parcel Boundary
- Roadway
- Local Street
- Waterbody

Figure C-3c
Potential Noise Impacts
Alternative A5



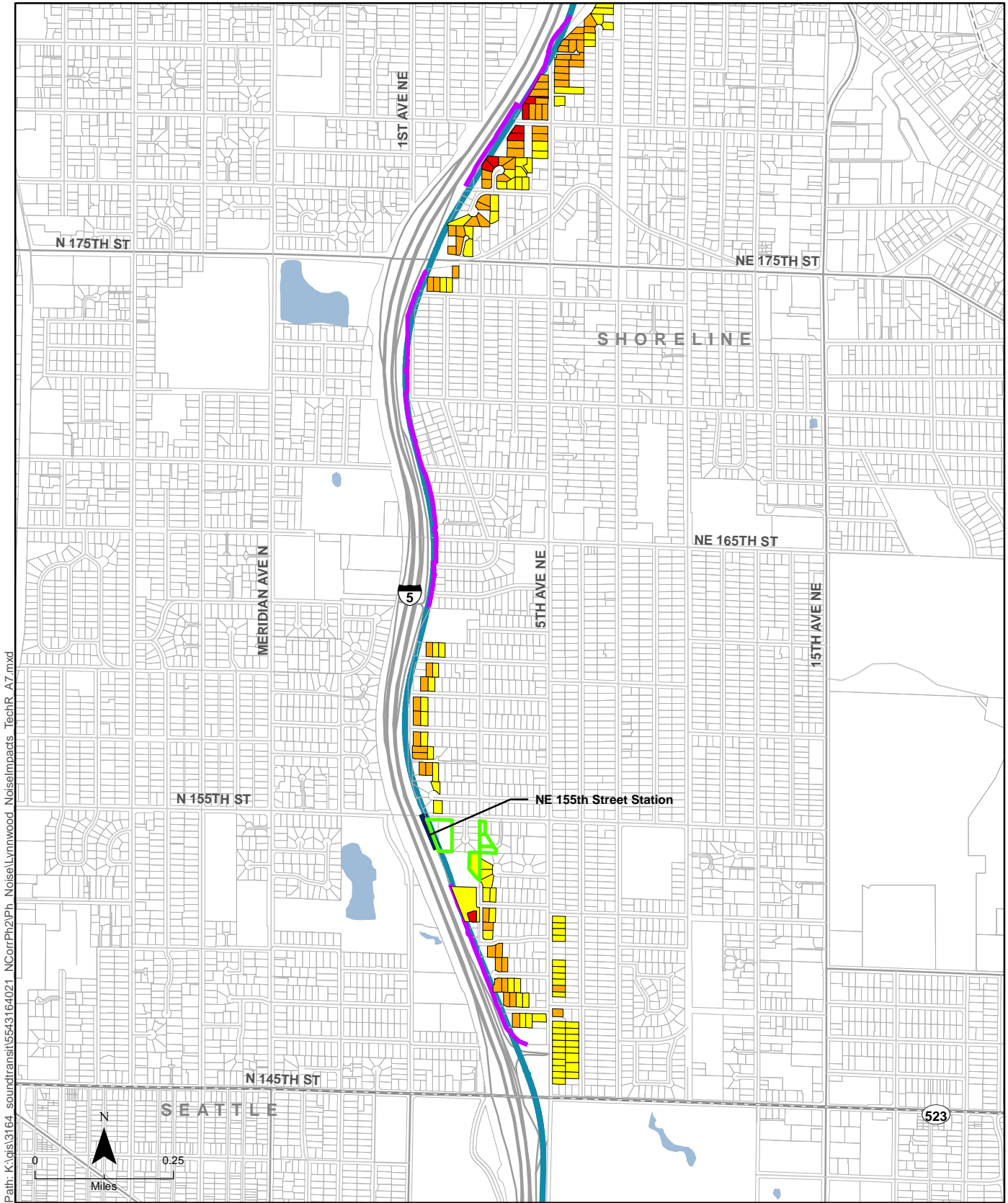
Path: K:\gis\3164_soundtransit\5543164021_NCorrPh2\Ph_Noise\Lynnwood_NoiseImpacts_TechR_A7.mxd

Data Sources: (King County, Snohomish County, WSDOT, Sound Transit)

- | | | |
|---|---------------------|--------------|
| Potential Noise Impact | Existing Sound Wall | Roadway |
| Moderate Noise Impact Requiring Mitigation | Alternative A7 | Local Street |
| Park and Ride Moderate Noise Impact Requiring Mitigation | Station Location | Waterbody |
| Severe Noise Impact Requiring Mitigation | Parcel Boundary | |
| Moderate Residual Noise Impact Requiring Additional Mitigation (sound insulation) | | |

Figure C-4a
Potential Noise Impacts
Alternative A7

Lynnwood Link Extension



Path: K:\gis\3164_soundtransit\5543164021_NCorrPh2\Ph_Noise\Lynnwood_NoiseImpacts_TechR_A7.mxd

Data Sources: (King County, Snohomish County, WSDOT, Sound Transit)

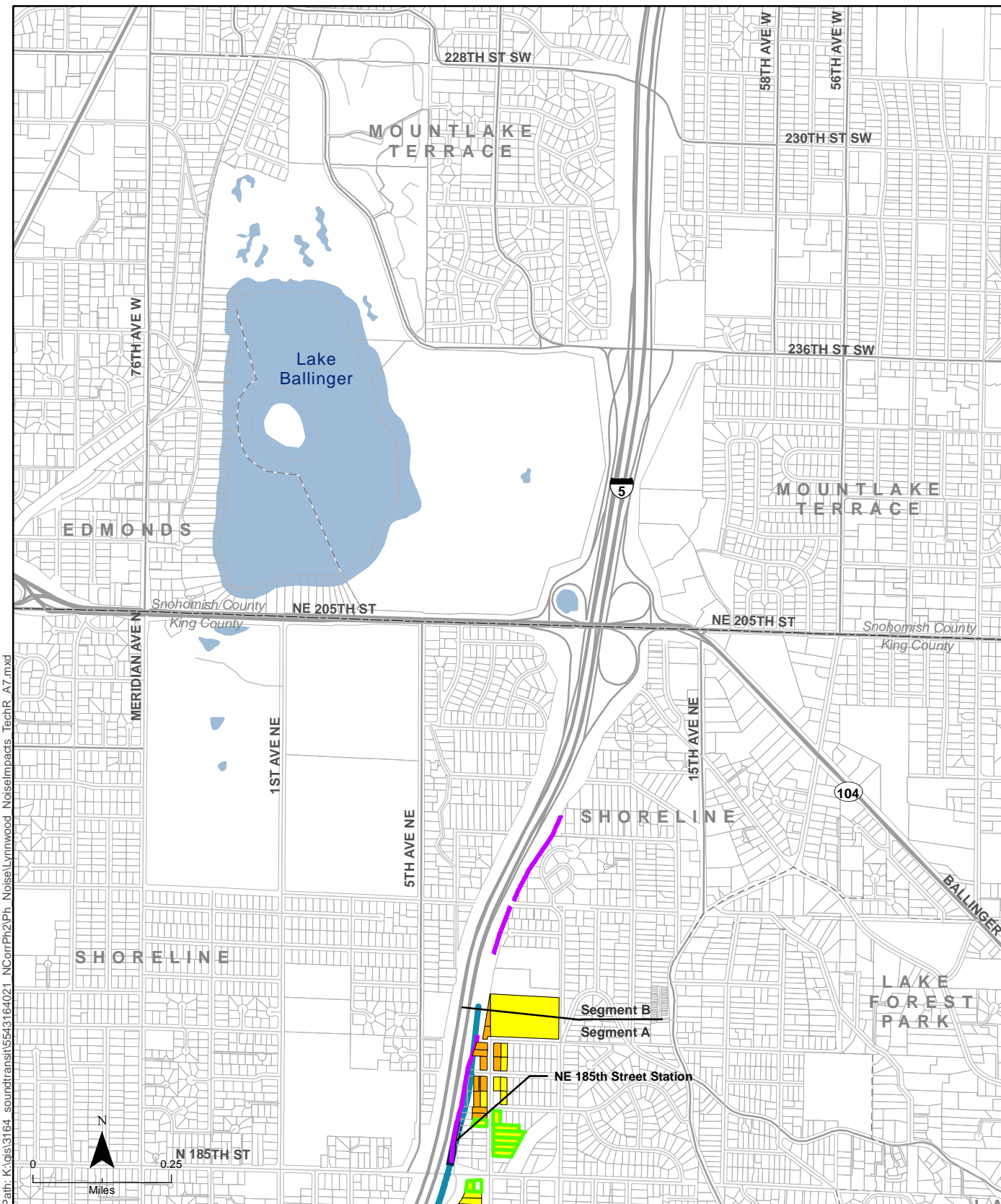
Potential Noise Impact

- Moderate Noise Impact Requiring Mitigation
- Park and Ride Moderate Noise Impact Requiring Mitigation
- Severe Noise Impact Requiring Mitigation
- Moderate Residual Noise Impact Requiring Additional Mitigation (sound insulation)

- Existing Sound Wall
- Alternative A7
- Station Location
- Parcel Boundary
- Roadway
- Local Street
- Waterbody

Figure C-4b
Potential Noise Impacts
Alternative A7

Lynnwood Link Extension



Path: K:\gis\3164_soundtransit\5543164021_NCorrPh2\Ph_Noise\Lynnwood_NoiseImpacts_TechR_A7.mxd

Data Sources: (King County, Snohomish County, WSDOT, Sound Transit)

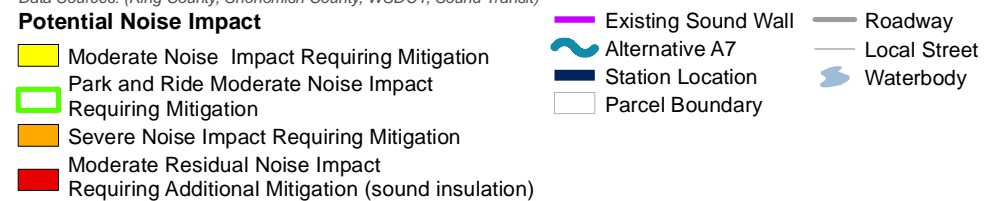
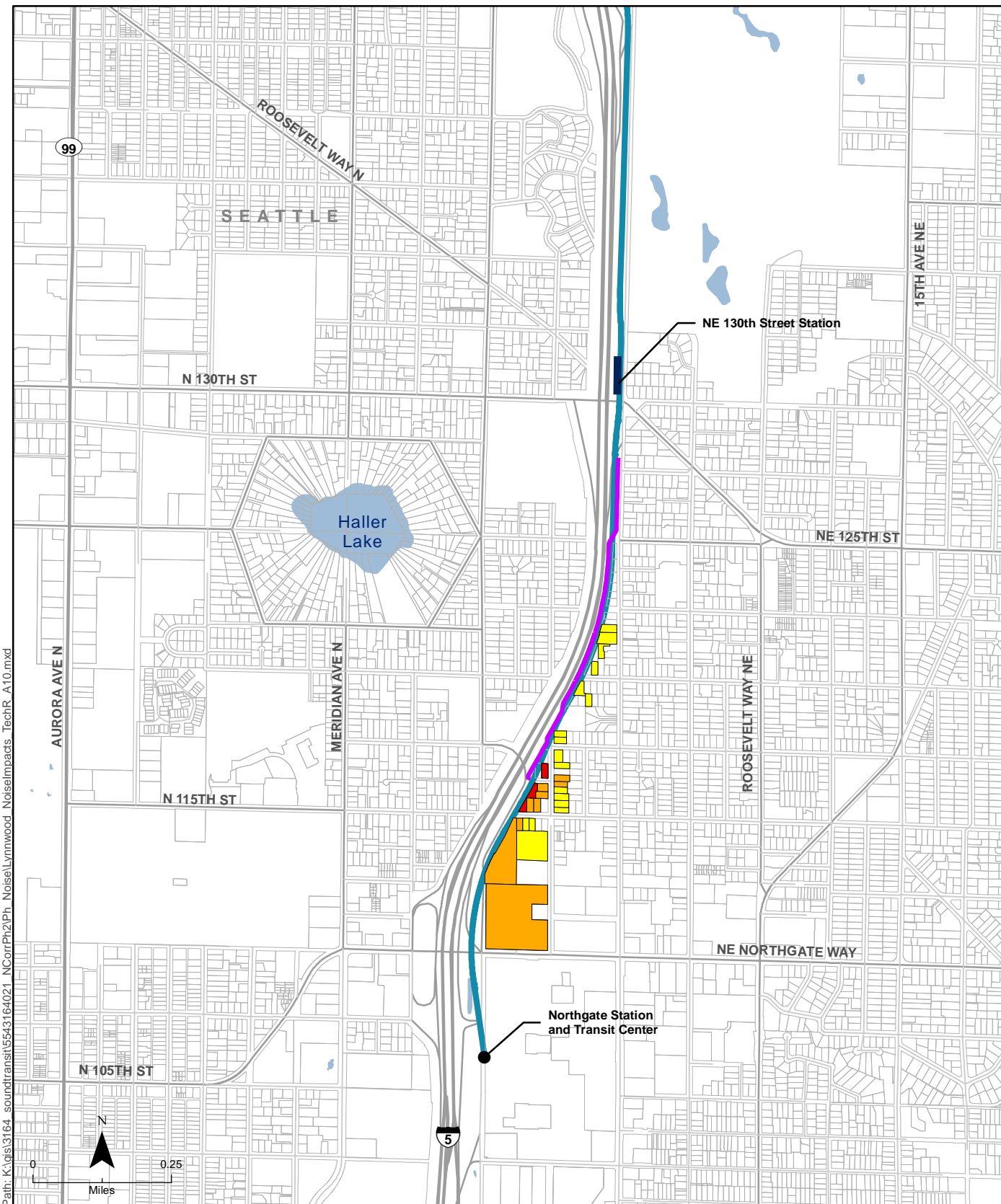


Figure C-4c
Potential Noise Impacts
Alternative A7



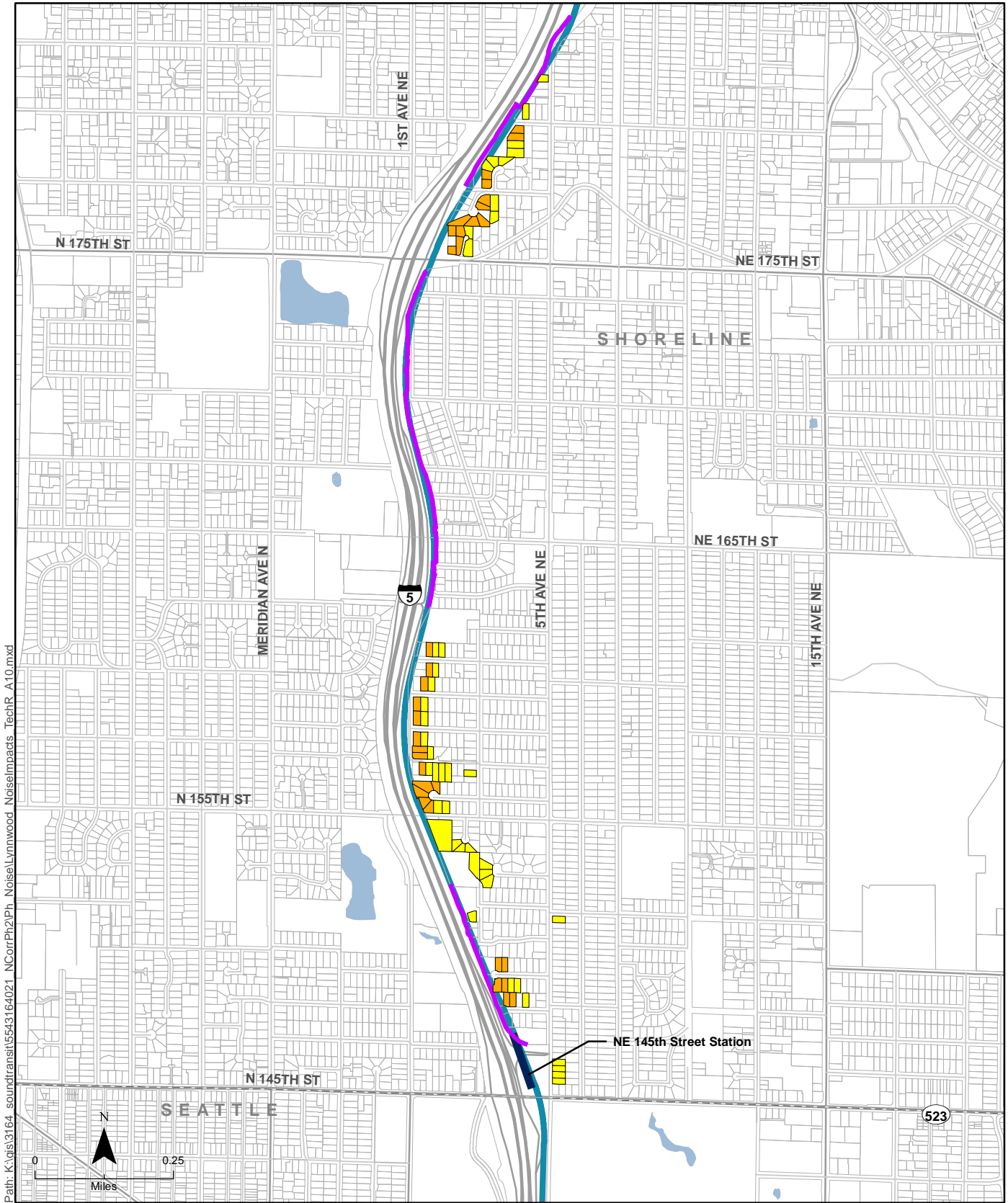
Path: K:\gis\3164_soundtransit\5543164021_NCorrPh2\Ph_Noise\Lynnwood_NoiseImpacts_TechR_A10.mxd

Data Sources: (King County, Snohomish County, WSDOT, Sound Transit)

- | | | |
|---|---------------------|--------------|
| Potential Noise Impact | Existing Sound Wall | Roadway |
| Moderate Noise Impact Requiring Mitigation | Alternative A10 | Local Street |
| Park and Ride Moderate Noise Impact Requiring Mitigation | Station Location | Waterbody |
| Severe Noise Impact Requiring Mitigation | Parcel Boundary | |
| Moderate Residual Noise Impact Requiring Additional Mitigation (sound insulation) | | |

Figure C-5a
Potential Noise Impacts
Alternative A10

Lynnwood Link Extension



Data Sources: (King County, Snohomish County, WSDOT, Sound Transit)

Potential Noise Impact

- Moderate Noise Impact Requiring Mitigation
- Park and Ride Moderate Noise Impact Requiring Mitigation
- Severe Noise Impact Requiring Mitigation
- Moderate Residual Noise Impact
- Requiring Additional Mitigation (sound insulation)

- Existing Sound Wall
- Alternative A10
- Station Location
- Parcel Boundary
- Roadway
- Local Street
- Waterbody

Figure C-5b
Potential Noise Impacts
Alternative A10

Lynnwood Link Extension