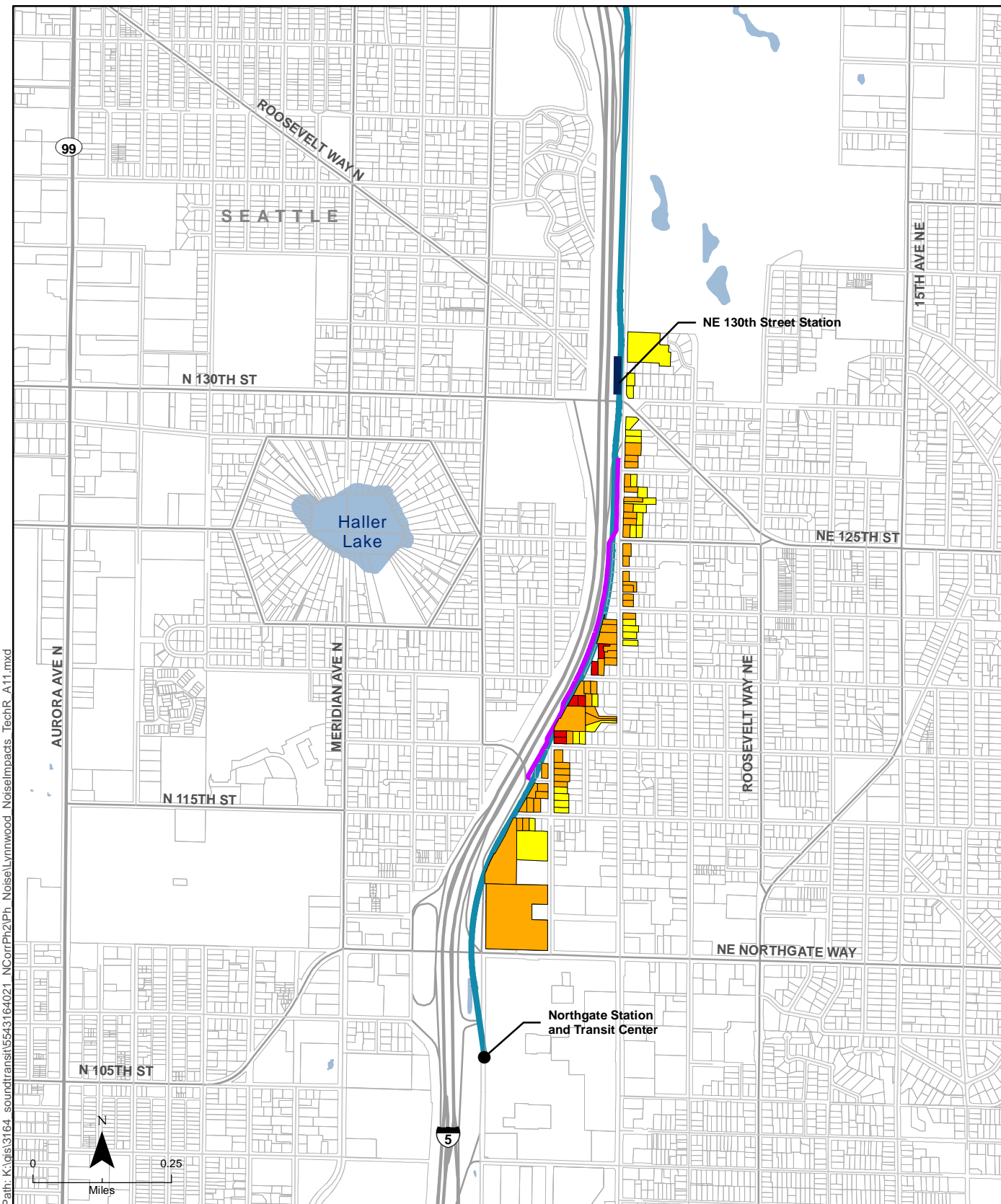


Path: K:\gis\3164_soundtransit\5543164021_NCorrPh2\Ph_Noise\Lynnwood_NoiseImpacts_TechR_A10.mxd

Data Sources: (King County, Snohomish County, WSDOT, Sound Transit)

- | | | |
|---|---------------------|--------------|
| Potential Noise Impact | Existing Sound Wall | Roadway |
| Moderate Noise Impact Requiring Mitigation | Alternative A10 | Local Street |
| Park and Ride Moderate Noise Impact Requiring Mitigation | Station Location | Waterbody |
| Severe Noise Impact Requiring Mitigation | Parcel Boundary | |
| Moderate Residual Noise Impact Requiring Additional Mitigation (sound insulation) | | |

Figure C-5c
Potential Noise Impacts
Alternative A10

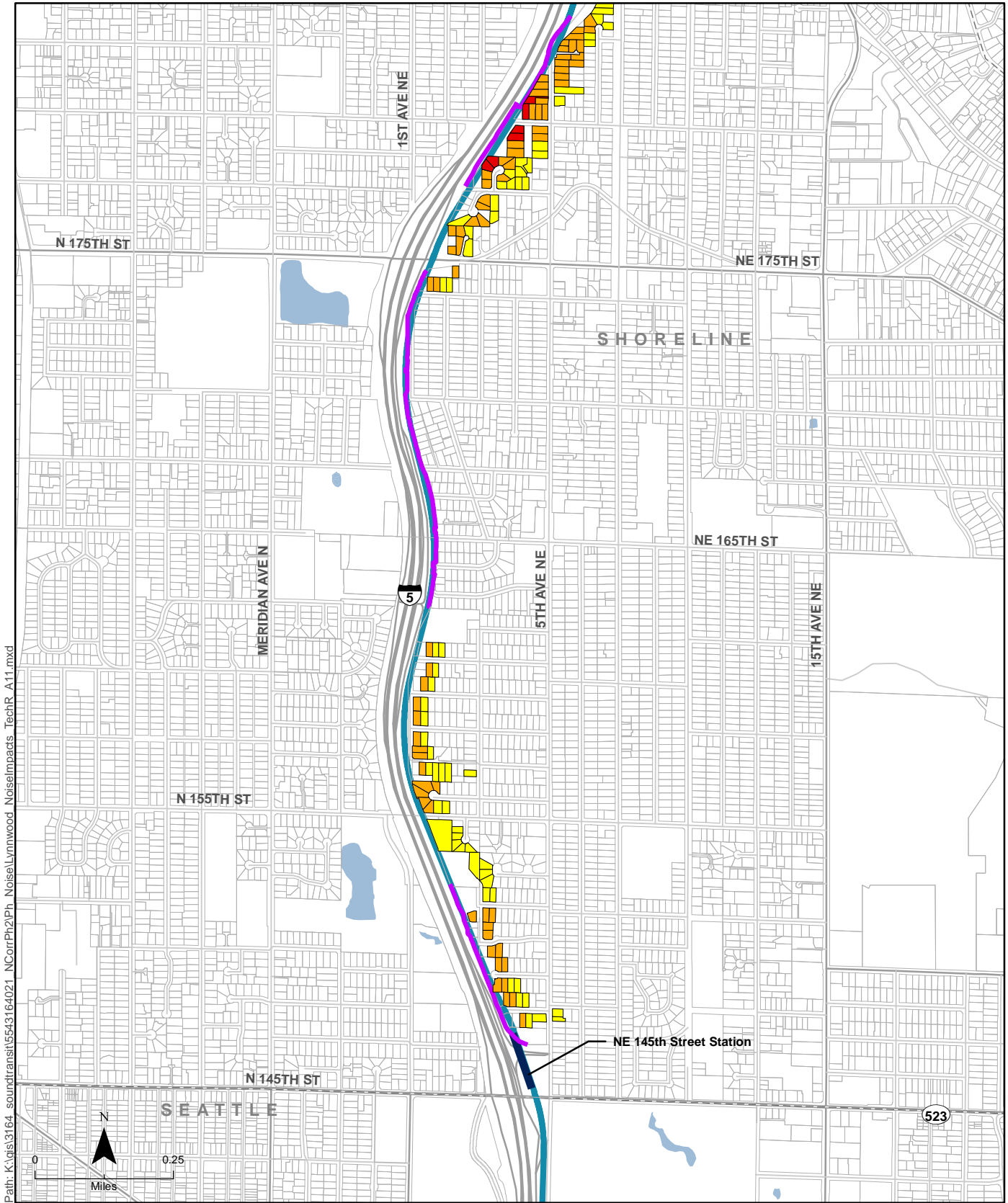


Path: K:\gis\3164_soundtransit\5543164021_NCorrPh2\Ph_Noise\Lynnwood_NoiseImpacts_TechR_A11.mxd

Data Sources: (King County, Snohomish County, WSDOT, Sound Transit)

- | | | |
|---|---------------------|--------------|
| Potential Noise Impact | Existing Sound Wall | Roadway |
| Moderate Noise Impact Requiring Mitigation | Alternative A11 | Local Street |
| Park and Ride Moderate Noise Impact Requiring Mitigation | Station Location | Waterbody |
| Severe Noise Impact Requiring Mitigation | Parcel Boundary | |
| Moderate Residual Noise Impact Requiring Additional Mitigation (sound insulation) | | |

Figure C-6a
Potential Noise Impacts
Alternative A11



Path: K:\gis\3164_soundtransit\5543164021_NCorrPh2Ph_Noise\Lynnwood_NoiseImpacts_TechR_A11.mxd

Data Sources: (King County, Snohomish County, WSDOT, Sound Transit)

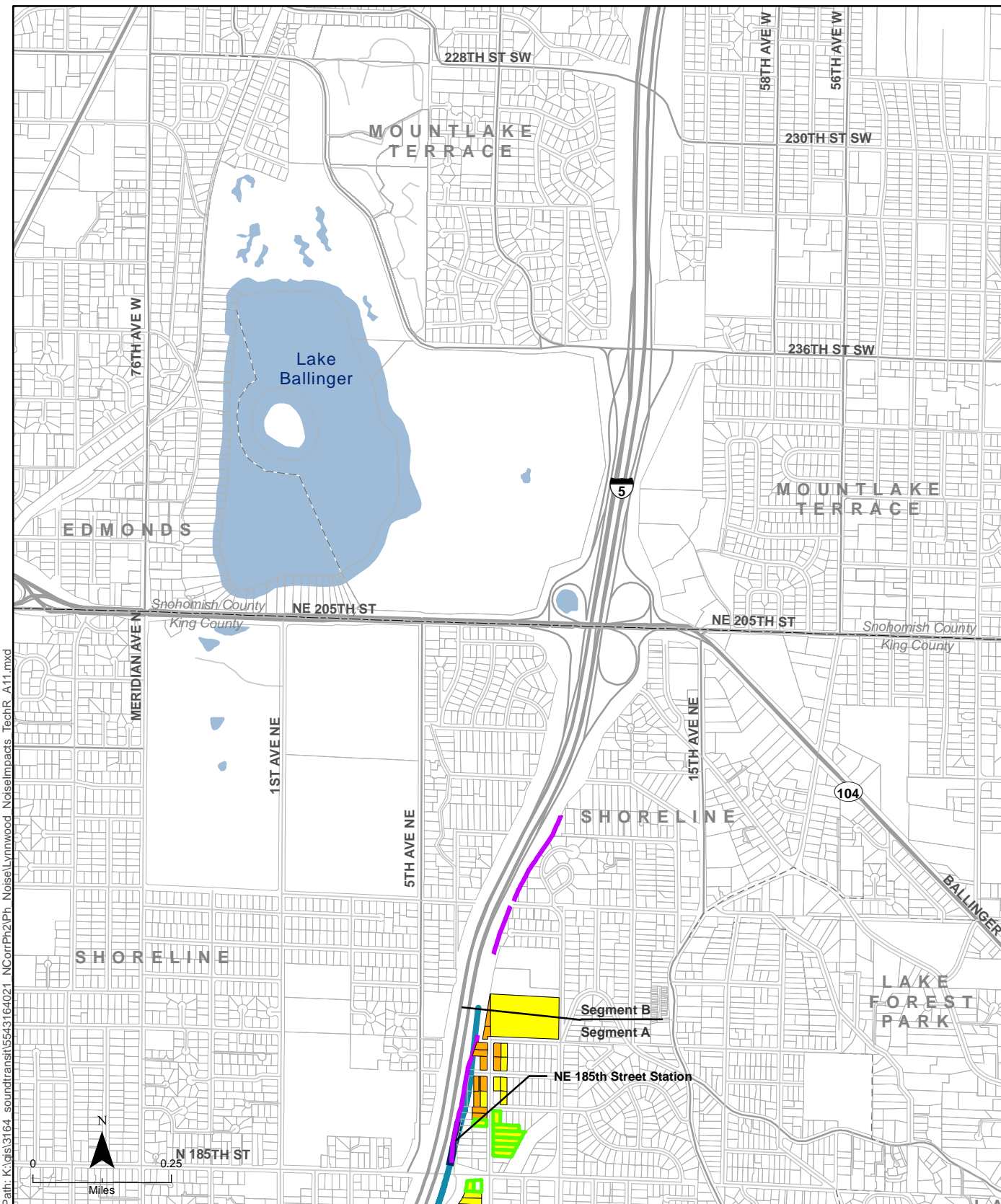
Potential Noise Impact

- Moderate Noise Impact Requiring Mitigation
- Park and Ride Moderate Noise Impact Requiring Mitigation
- Severe Noise Impact Requiring Mitigation
- Moderate Residual Noise Impact Requiring Additional Mitigation (sound insulation)

- Existing Sound Wall
- Alternative A11
- Station Location
- Parcel Boundary
- Roadway
- Local Street
- Waterbody

Figure C-6b
Potential Noise Impacts
Alternative A11

Lynnwood Link Extension



Path: K:\gis\3164_soundtransit\5543164021_NCorrPh2\Ph_Noise\Lynnwood_NoiseImpacts_TechR_A11.mxd

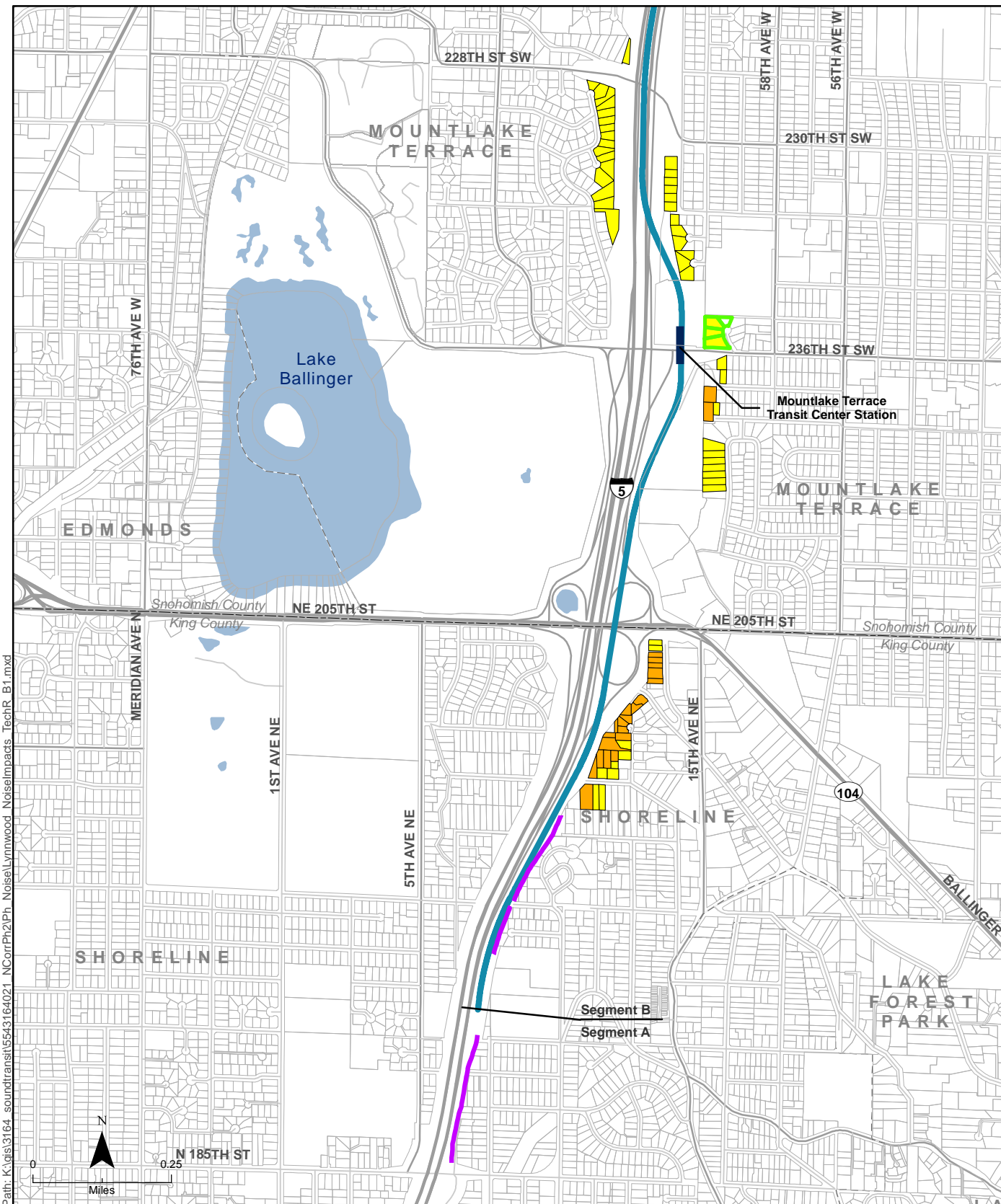
Data Sources: (King County, Snohomish County, WSDOT, Sound Transit)

Potential Noise Impact

- Moderate Noise Impact Requiring Mitigation
- Severe Noise Impact Requiring Mitigation
- Moderate Residual Noise Impact Requiring Additional Mitigation (sound insulation)
- Park and Ride Moderate Noise Impact Requiring Mitigation

- Existing Sound Wall
- Alternative A11
- Station Location
- Parcel Boundary
- Roadway
- Local Street
- Waterbody

Figure C-6c
Potential Noise Impacts
Alternative A11

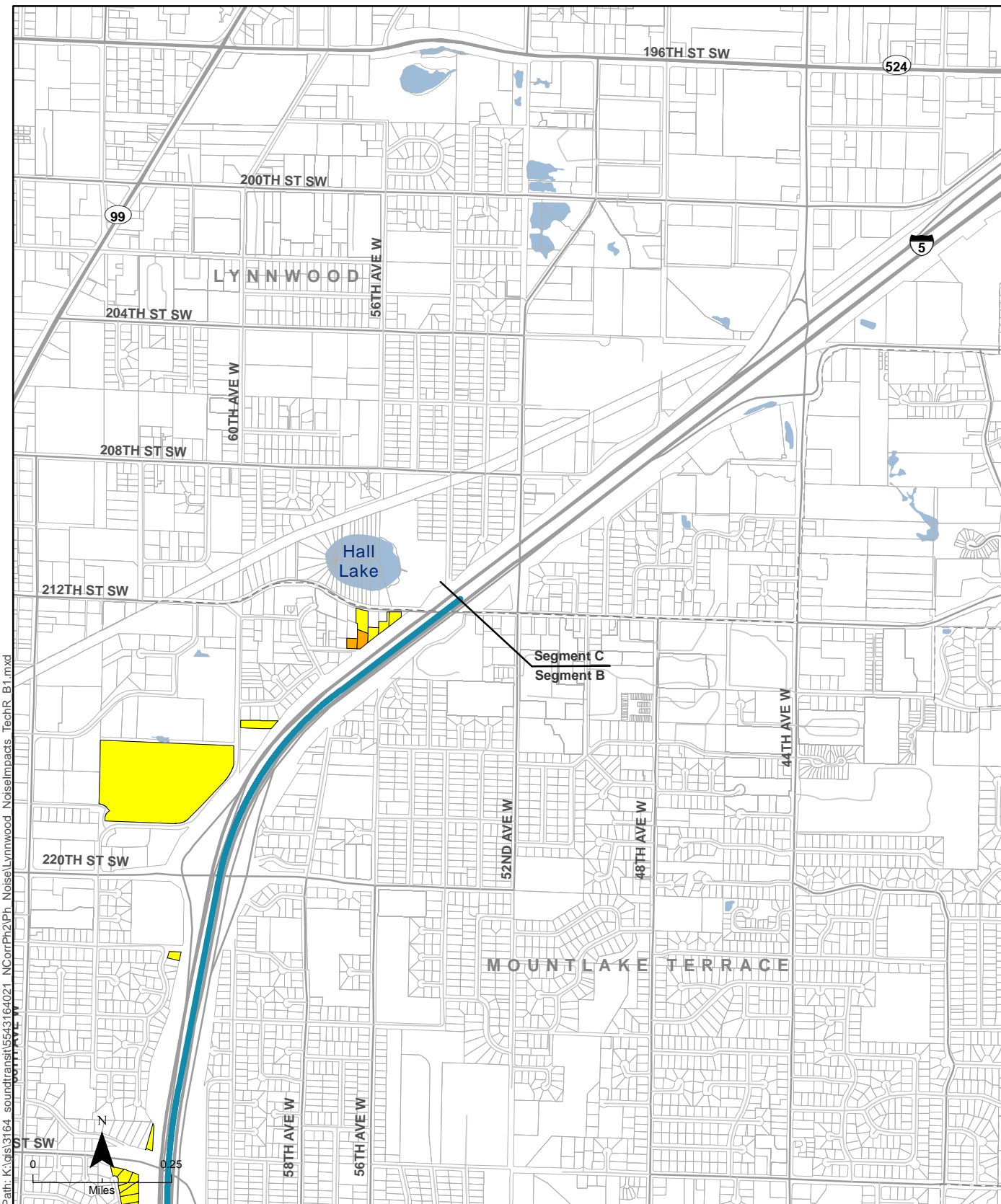


Path: K:\gis\3164_soundtransit\5543164021_NCorrPh2\Ph_Noise\Lynnwood_NoiseImpacts_TechR_B1.mxd

Data Sources: (King County, Snohomish County, WSDOT, Sound Transit)

- | | | |
|---|---------------------|--------------|
| Potential Noise Impact | Existing Sound Wall | Roadway |
| Moderate Noise Impact Requiring Mitigation | Alternative B1 | Local Street |
| Park and Ride Moderate Noise Impact Requiring Mitigation | Station Location | Waterbody |
| Severe Noise Impact Requiring Mitigation | Parcel Boundary | |
| Moderate Residual Noise Impact Requiring Additional Mitigation (sound insulation) | | |

Figure C-7a
Potential Noise Impacts
Alternative B1



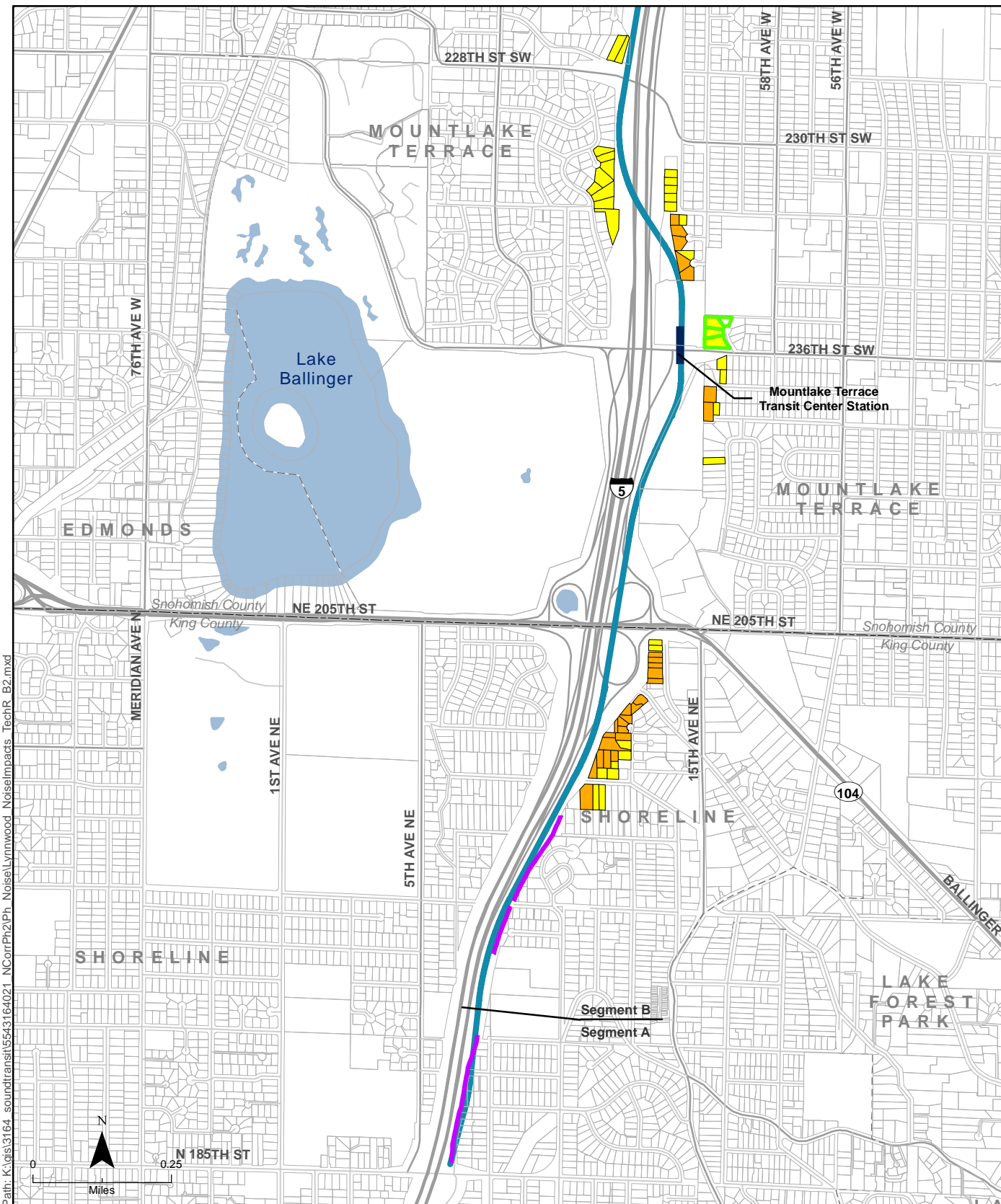
Path: K:\gis\3164_soundtransit\5543164021_NCorrPh2\Ph_Noise\Lynnwood_NoiseImpacts_TechR_B1.mxd

Data Sources: (King County, Snohomish County, WSDOT, Sound Transit)

- | | | |
|---|---------------------|--------------|
| Potential Noise Impact | Existing Sound Wall | Roadway |
| Moderate Noise Impact Requiring Mitigation | Alternative B1 | Local Street |
| Park and Ride Moderate Noise Impact Requiring Mitigation | Station Location | Waterbody |
| Severe Noise Impact Requiring Mitigation | Parcel Boundary | |
| Moderate Residual Noise Impact Requiring Additional Mitigation (sound insulation) | | |

Figure C-7b
Potential Noise Impacts
Alternative B1

Lynnwood Link Extension

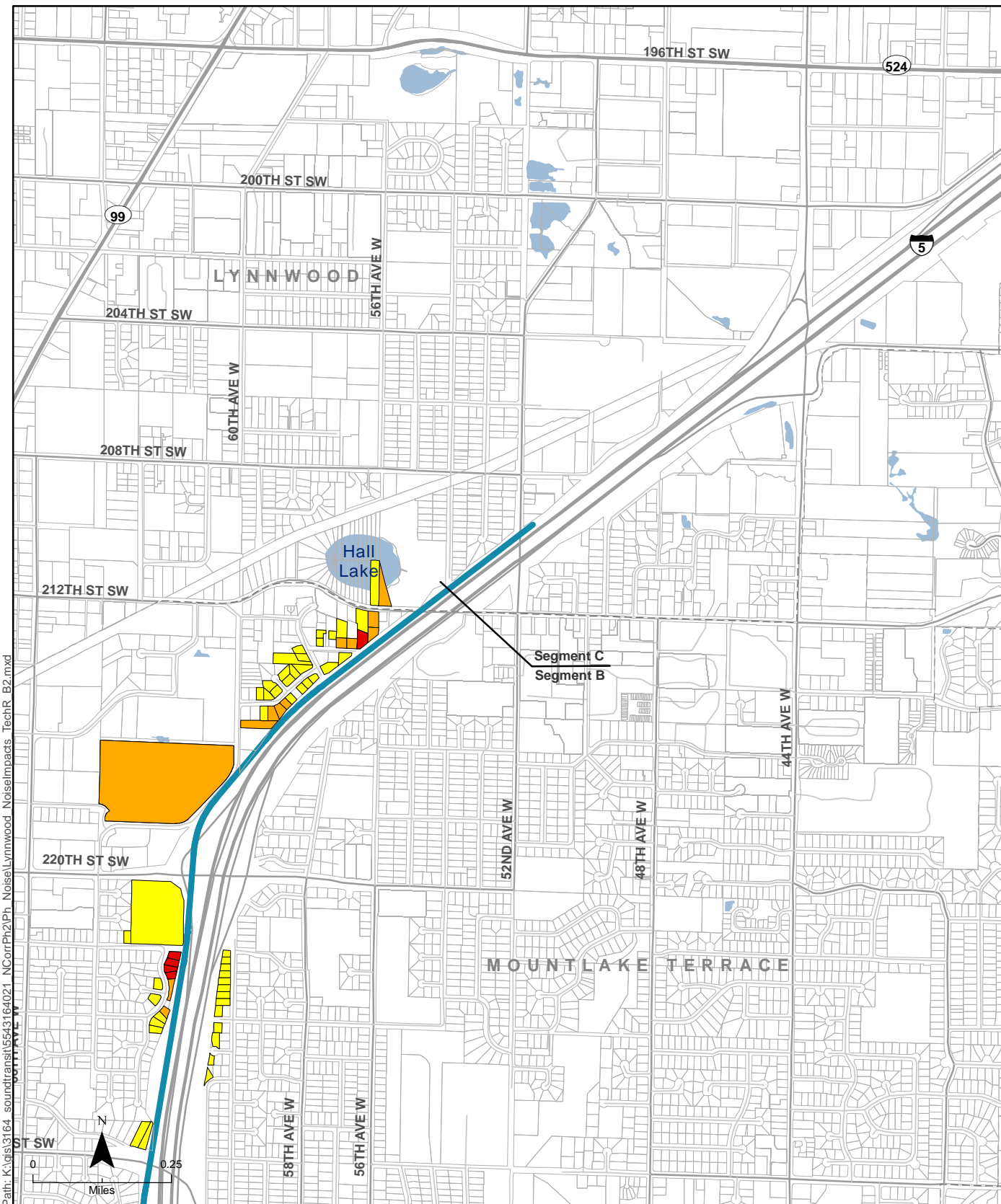


Path: K:\gis\3164_soundtransit\5543164021_NCorrPh2\Ph_Noise\Lynnwood_NoiseImpacts_TechR_B2.mxd

Data Sources: (King County, Snohomish County, WSDOT, Sound Transit)

- | | | |
|---|---------------------|--------------|
| Potential Noise Impact | Existing Sound Wall | Roadway |
| Moderate Noise Impact Requiring Mitigation | Alternative B2 | Local Street |
| Park and Ride Moderate Noise Impact Requiring Mitigation | Station Location | Waterbody |
| Severe Noise Impact Requiring Mitigation | Parcel Boundary | |
| Moderate Residual Noise Impact Requiring Additional Mitigation (sound insulation) | | |

Figure C-8a
Potential Noise Impacts
Alternative B2



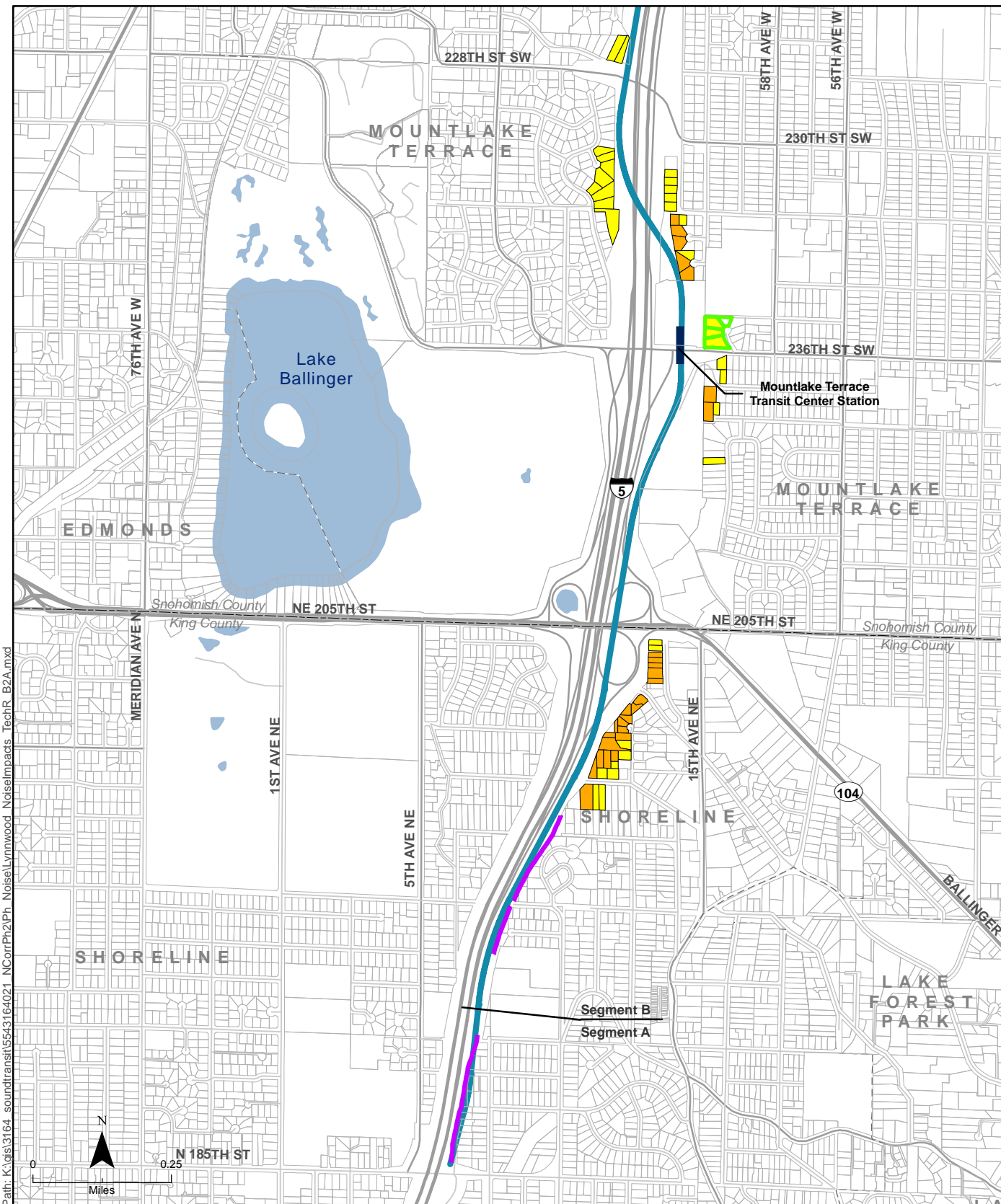
Path: K:\gis\3164_soundtransit\5543164021_NCorrPh2\Ph_Noise\Lynnwood_NoiseImpacts_TechR_B2.mxd

Data Sources: (King County, Snohomish County, WSDOT, Sound Transit)

- | | | |
|---|---------------------|--------------|
| Potential Noise Impact | Existing Sound Wall | Roadway |
| Moderate Noise Impact Requiring Mitigation | Alternative B2 | Local Street |
| Park and Ride Moderate Noise Impact Requiring Mitigation | Station Location | Waterbody |
| Severe Noise Impact Requiring Mitigation | Parcel Boundary | |
| Moderate Residual Noise Impact Requiring Additional Mitigation (sound insulation) | | |

Figure C-8b
Potential Noise Impacts
Alternative B2

Lynnwood Link Extension



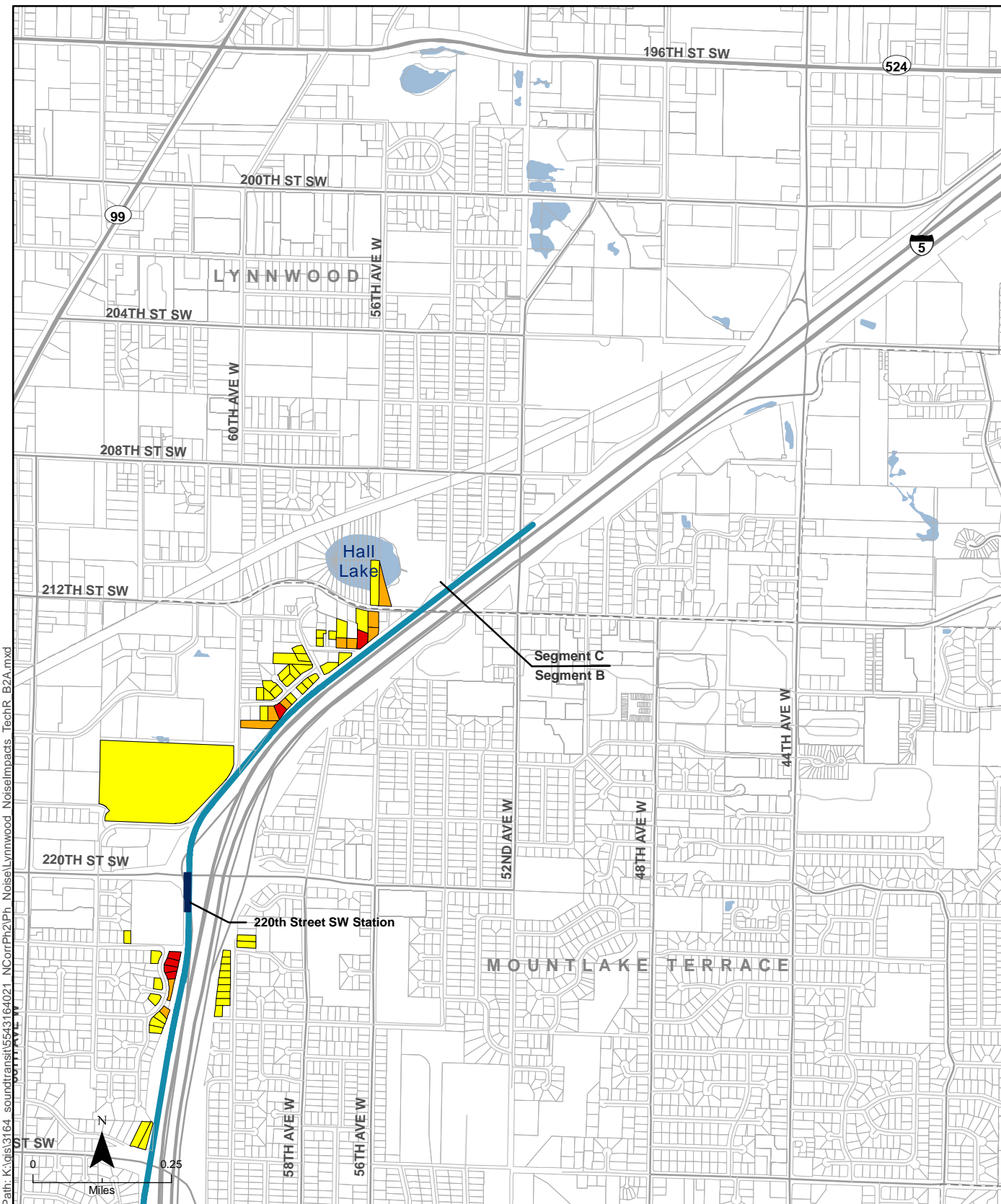
Path: K:\gis\3164_soundtransit\5543164021_NCorrPh2\Ph_Noise\Lynnwood_NoiseImpacts_TechR_B2A.mxd

Data Sources: (King County, Snohomish County, WSDOT, Sound Transit)

- | | | |
|---|---------------------|--------------|
| Potential Noise Impact | Existing Sound Wall | Roadway |
| Moderate Noise Impact Requiring Mitigation | Alternative B2A | Local Street |
| Park and Ride Moderate Noise Impact Requiring Mitigation | Station Location | Waterbody |
| Severe Noise Impact Requiring Mitigation | Parcel Boundary | |
| Moderate Residual Noise Impact Requiring Additional Mitigation (sound insulation) | | |

Figure C-9a
Potential Noise Impacts
Alternative B2A

Lynnwood Link Extension



Path: K:\gis\3164_soundtransit\5543164021_NCorrPh2\Ph_Noise\Lynnwood_NoiseImpacts_TechR_B2A.mxd

Data Sources: (King County, Snohomish County, WSDOT, Sound Transit)

- | | | |
|---|---------------------|--------------|
| Potential Noise Impact | Existing Sound Wall | Roadway |
| Moderate Noise Impact Requiring Mitigation | Alternative B2A | Local Street |
| Park and Ride Moderate Noise Impact Requiring Mitigation | Station Location | Waterbody |
| Severe Noise Impact Requiring Mitigation | Parcel Boundary | |
| Moderate Residual Noise Impact Requiring Additional Mitigation (sound insulation) | | |

Figure C-9b
Potential Noise Impacts
Alternative B2A

Lynnwood Link Extension