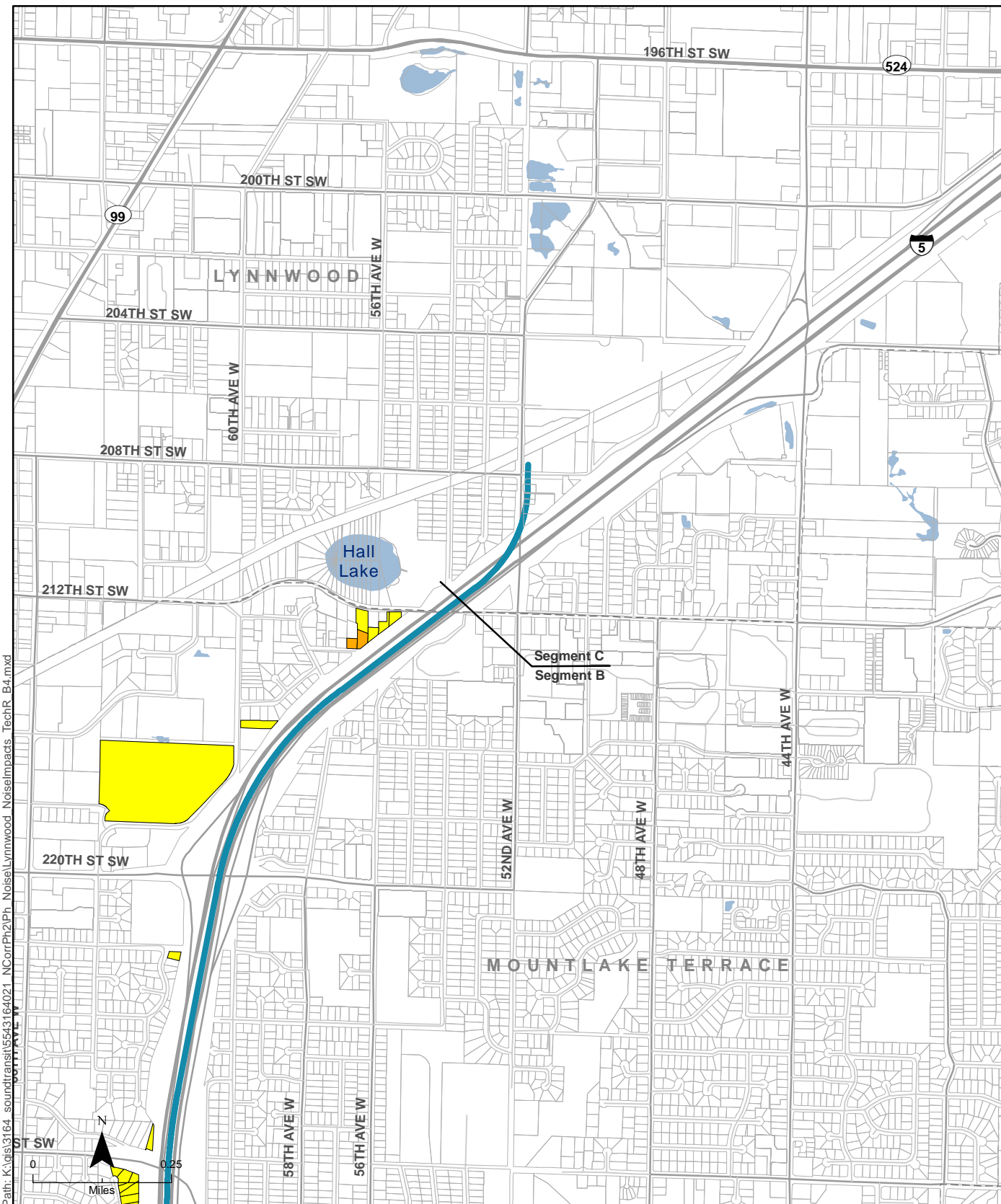


Path: K:\gis\3164\_soundtransit\5543164021\_NCorrPh2\Ph\_Noise\Lynnwood\_NoiseImpacts\_TechR\_B4.mxd

Data Sources: (King County, Snohomish County, WSDOT, Sound Transit)

- |  |                     |              |
|--|---------------------|--------------|
| <b>Potential Noise Impact</b>                            | Existing Sound Wall | Roadway      |
| Moderate Noise Impact Requiring Mitigation               | Alternative B4      | Local Street |
| Park and Ride Moderate Noise Impact Requiring Mitigation | Station Location    | Waterbody    |
| Severe Noise Impact Requiring Mitigation                 | Parcel Boundary     |              |
| Moderate Residual Noise Impact                           |                     |              |
| Requiring Additional Mitigation (sound insulation)       |                     |              |

**Figure C-10a**  
Potential Noise Impacts  
Alternative B4

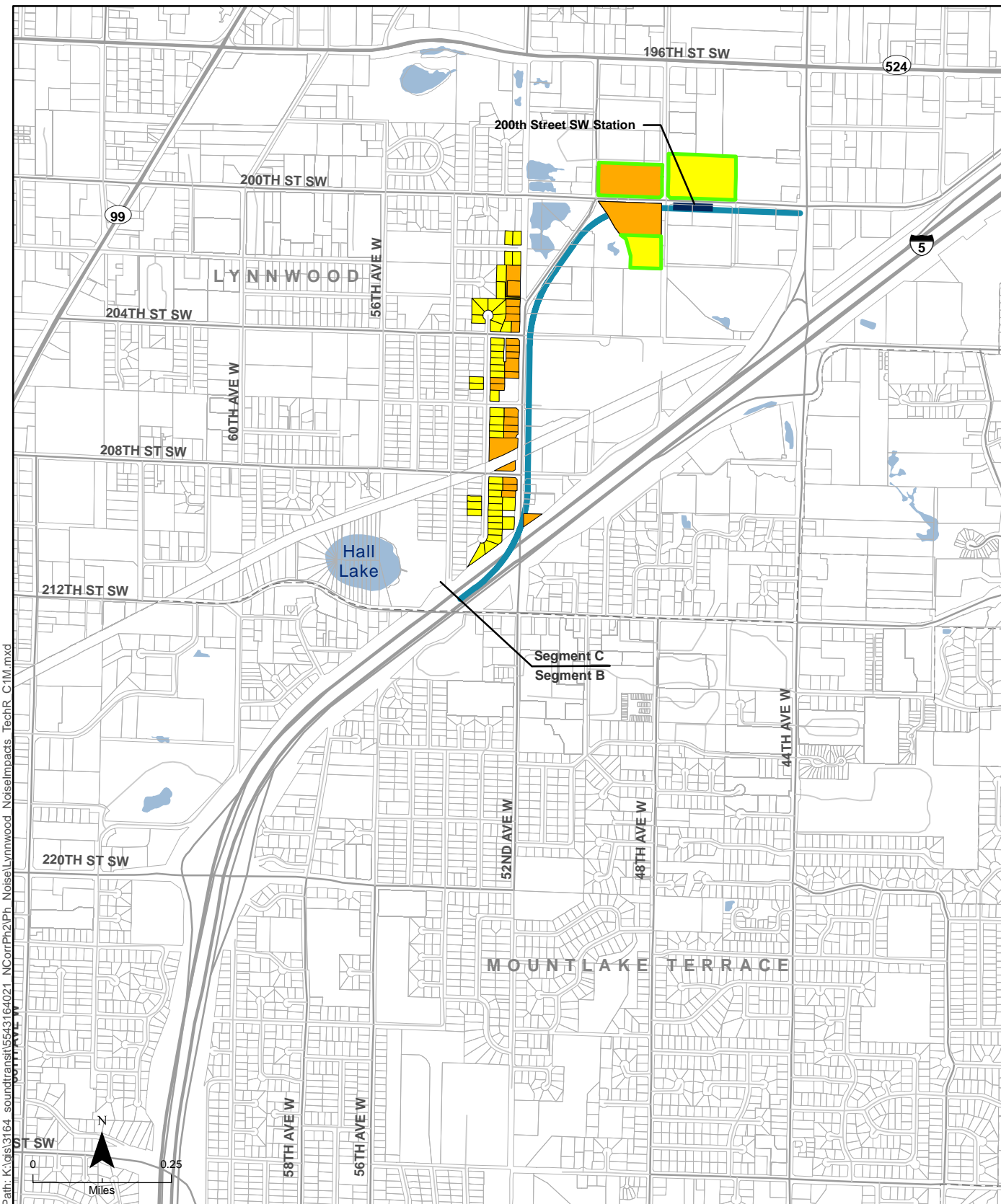


Path: K:\gis\3164\_soundtransit\5543164021\_NCorrPh2\Ph\_Noise\Lynnwood\_NoiseImpacts\_TechR\_B4.mxd

Data Sources: (King County, Snohomish County, WSDOT, Sound Transit)

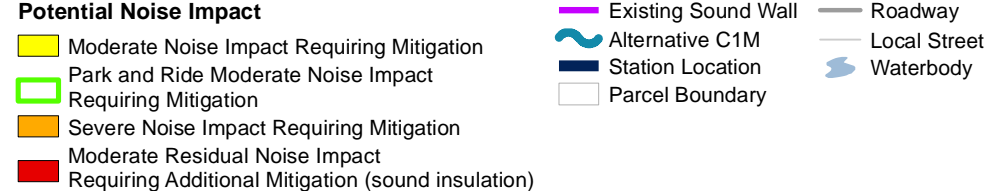
- |   |                     |              |
|---|---------------------|--------------|
| <b>Potential Noise Impact</b>   | Existing Sound Wall | Roadway      |
| Moderate Noise Impact Requiring Mitigation  | Alternative B4      | Local Street |
| Park and Ride Moderate Noise Impact Requiring Mitigation                          | Station Location    | Waterbody    |
| Severe Noise Impact Requiring Mitigation  | Parcel Boundary     |              |
| Moderate Residual Noise Impact Requiring Additional Mitigation (sound insulation) |                     |              |

**Figure C-10b**  
Potential Noise Impacts  
Alternative B4



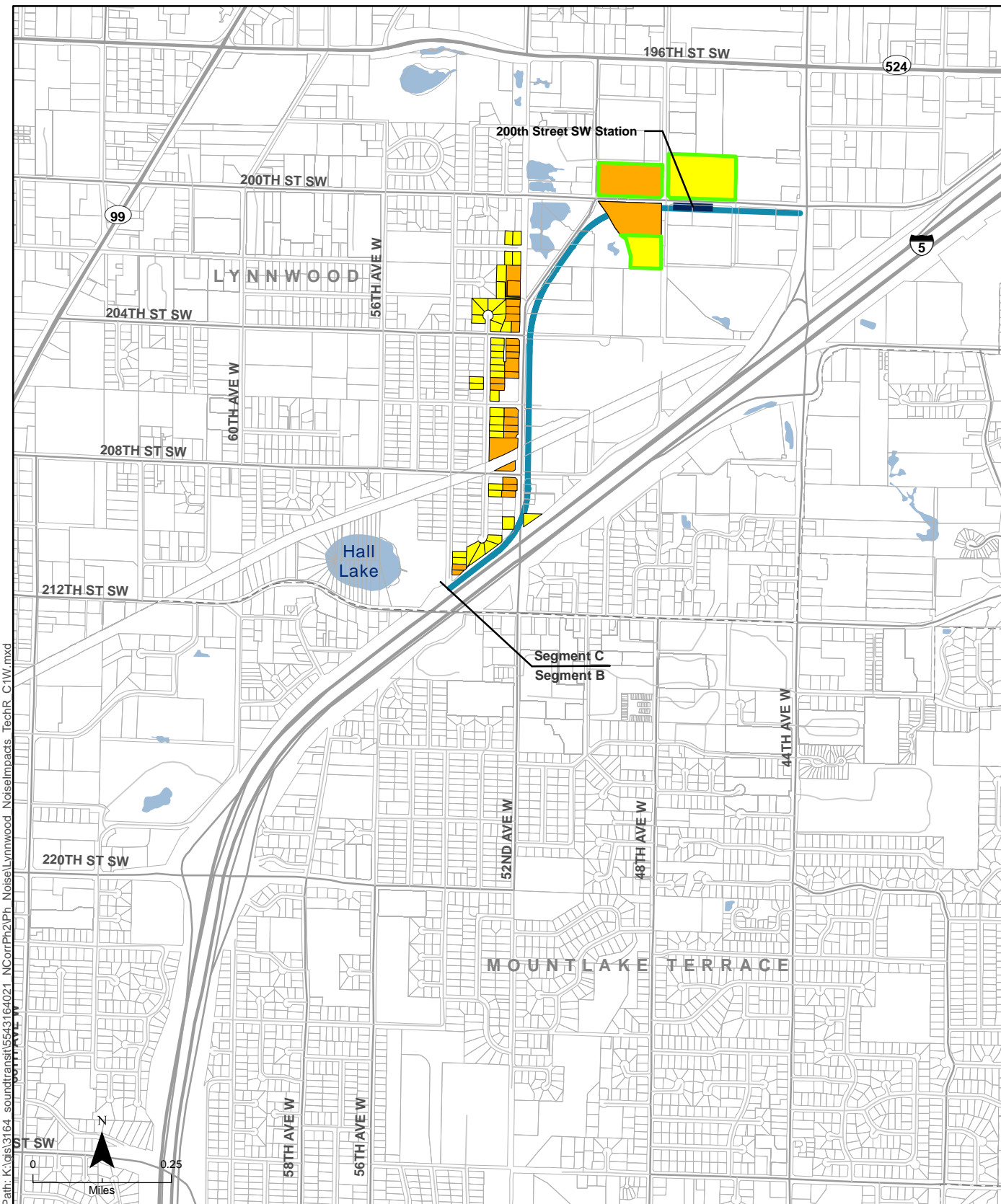
Path: K:\gis\3164\_soundtransit\5543164021\_NCorrPh2\Ph\_Noise\Lynnwood\_NoiseImpacts\_TechR\_C1M.mxd

Data Sources: (King County, Snohomish County, WSDOT, Sound Transit)



**Figure C-11**  
Potential Noise Impacts  
Alternative C1M





Path: K:\gis\3164\_soundtransit\5543164021\_NCorrPh2\Ph\_Noise\Lynnwood\_NoiseImpacts\_TechR\_C1W.mxd

Data Sources: (King County, Snohomish County, WSDOT, Sound Transit)

- |   |                     |              |
|---|---------------------|--------------|
| <b>Potential Noise Impact</b>   | Existing Sound Wall | Roadway      |
| Moderate Noise Impact Requiring Mitigation  | Alternative C1W     | Local Street |
| Park and Ride Moderate Noise Impact Requiring Mitigation                          | Station Location    | Waterbody    |
| Severe Noise Impact Requiring Mitigation  | Parcel Boundary     |              |
| Moderate Residual Noise Impact Requiring Additional Mitigation (sound insulation) |                     |              |

**Figure C-12**  
Potential Noise Impacts  
Alternative C1W



Path: K:\gis\3164\_soundtransit\5543164021\_NCorrPh2\Ph\_Noise\Lynnwood\_NoiseImpacts\_TechR\_C2M.mxd

Data Sources: (King County, Snohomish County, WSDOT, Sound Transit)

- |   |                     |              |
|---|---------------------|--------------|
| <b>Potential Noise Impact</b>   | Existing Sound Wall | Roadway      |
| Moderate Noise Impact Requiring Mitigation  | Alternative C2M     | Local Street |
| Park and Ride Moderate Noise Impact Requiring Mitigation                          | Station Location    | Waterbody    |
| Severe Noise Impact Requiring Mitigation  | Parcel Boundary     |              |
| Moderate Residual Noise Impact Requiring Additional Mitigation (sound insulation) |                     |              |

**Figure C-13**  
Potential Noise Impacts  
Alternative C2M

Lynnwood Link Extension



Path: K:\gis\3164\_soundtransit\5543164021\_NCorrPh2\Ph\_Noise\Lynnwood\_NoiseImpacts\_TechR\_C2W.mxd

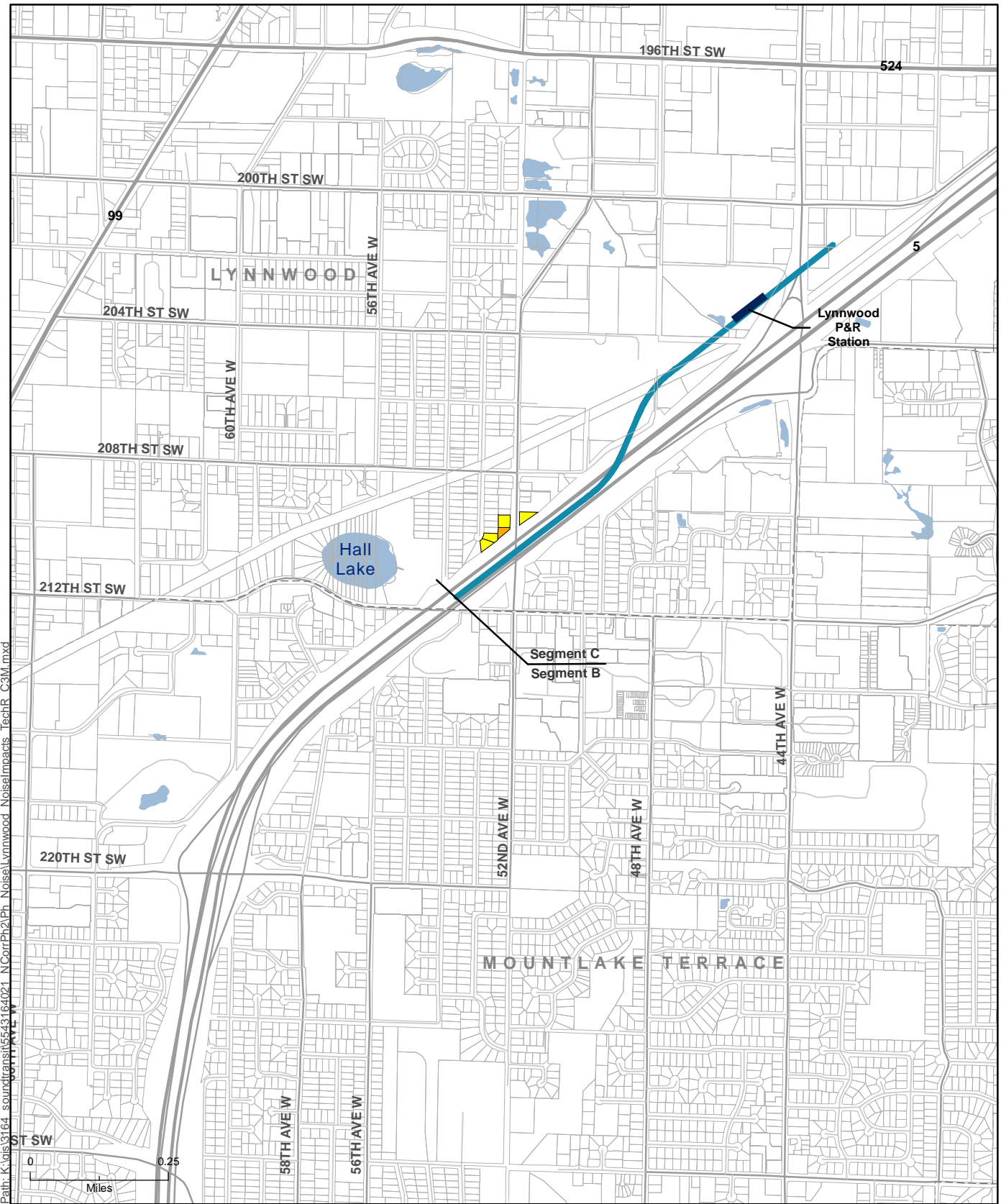
Data Sources: (King County, Snohomish County, WSDOT, Sound Transit)

- |   |                     |              |
|---|---------------------|--------------|
| <b>Potential Noise Impact</b>   | Existing Sound Wall | Roadway      |
| Moderate Noise Impact Requiring Mitigation  | Alternative C2W     | Local Street |
| Park and Ride Moderate Noise Impact Requiring Mitigation                          | Station Location    | Waterbody    |
| Severe Noise Impact Requiring Mitigation  | Parcel Boundary     |              |
| Moderate Residual Noise Impact Requiring Additional Mitigation (sound insulation) |                     |              |

**Figure C-14**  
Potential Noise Impacts  
Alternative C2W

Lynnwood Link Extension





Path: K:\gis\3164\_soundtransit\5543164021\_NCorrPh2\Ph\_Noise\Lynnwood\_NoiseImpacts\_TechR\_C3M.mxd

Data Sources: (King County, Snohomish County, WSDOT, Sound Transit)

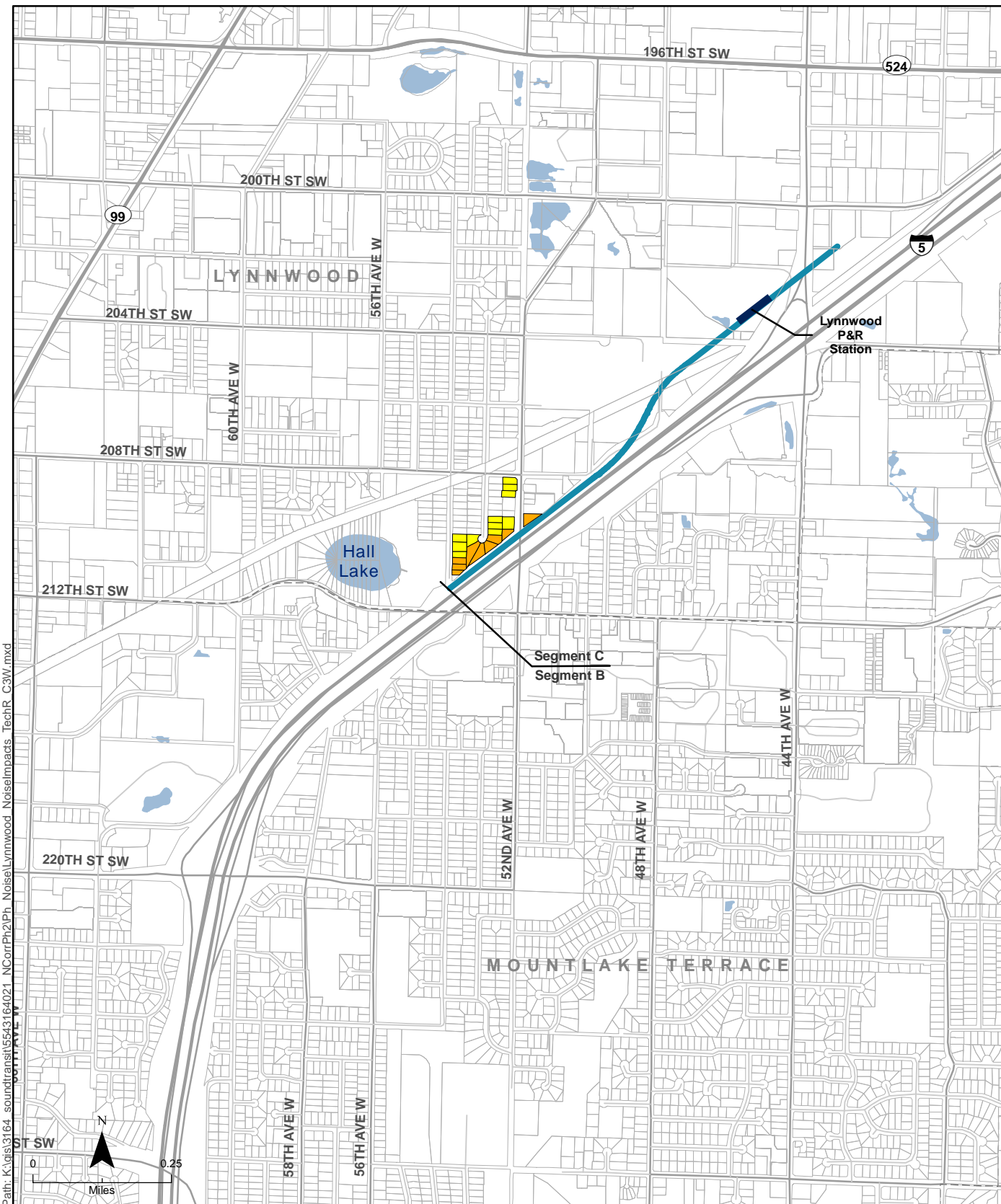
**Potential Noise Impact**

- Moderate Noise Impact Requiring Mitigation
- Park and Ride Moderate Noise Impact Requiring Mitigation
- Severe Noise Impact Requiring Mitigation
- Moderate Residual Noise Impact Requiring Additional Mitigation (sound insulation)

- Existing Sound Wall
- Alternative C3M
- Station Location
- Parcel Boundary
- Roadway
- Local Street
- Waterbody

**Figure C-15**  
Potential Noise Impacts  
Alternative C3M

Lynnwood Link Extension



Path: K:\gis\3164\_soundtransit\5543164021\_NCorrPh2\Ph\_Noise\Lynnwood\_NoiseImpacts\_TechR\_C3W.mxd

Data Sources: (King County, Snohomish County, WSDOT, Sound Transit)

**Potential Noise Impact**

- Moderate Noise Impact Requiring Mitigation
- Park and Ride Moderate Noise Impact Requiring Mitigation
- Severe Noise Impact Requiring Mitigation
- Moderate Residual Noise Impact Requiring Additional Mitigation (sound insulation)

- Existing Sound Wall
- Alternative C3W
- Station Location
- Parcel Boundary
- Roadway
- Local Street
- Waterbody

**Figure C-16**  
Potential Noise Impacts  
Alternative C3W

Lynnwood Link Extension