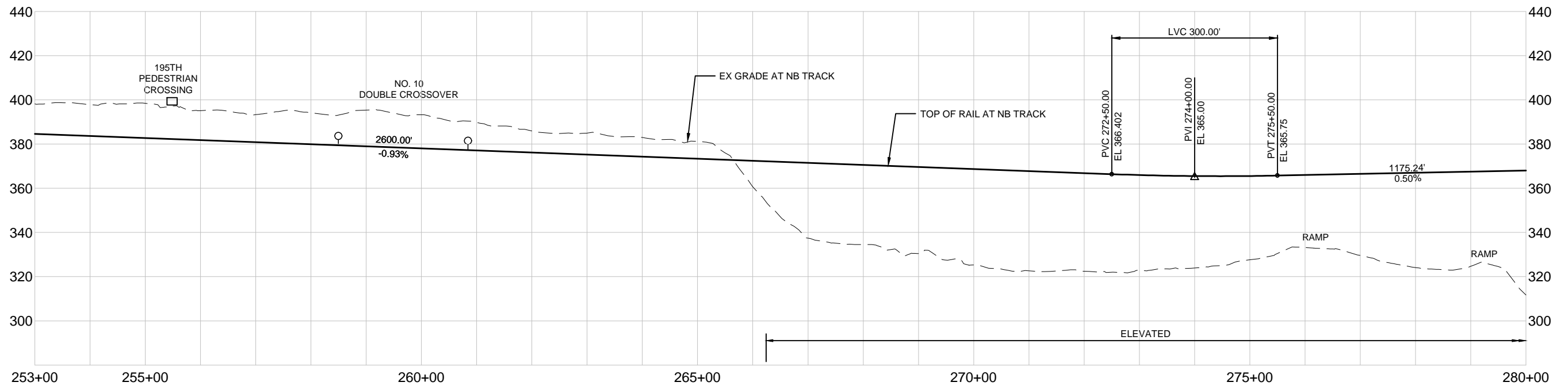
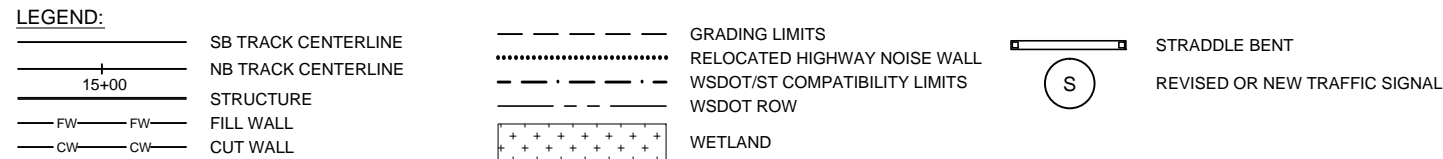
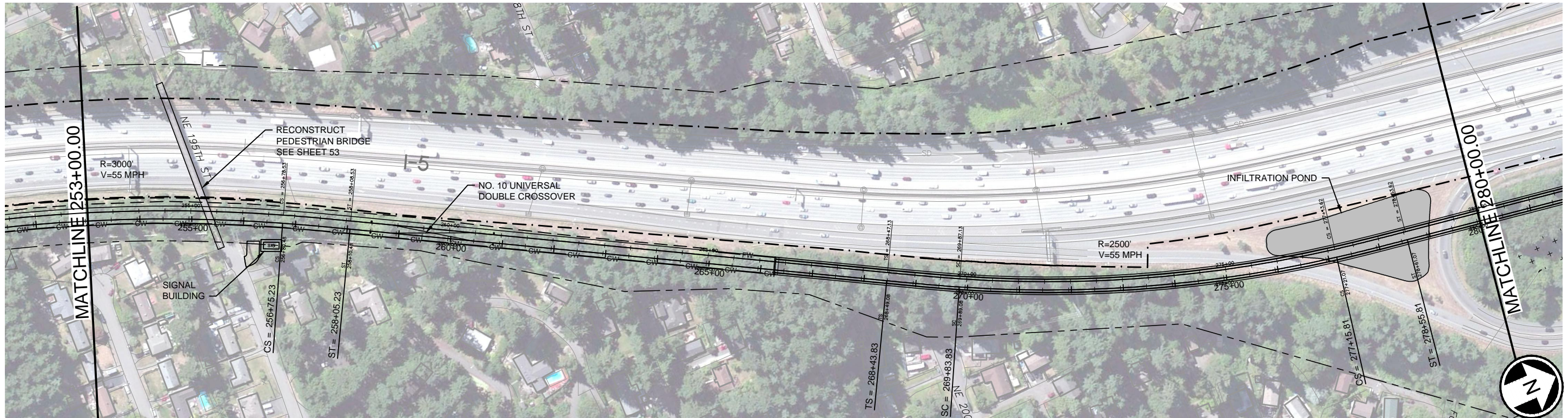


SOUND TRANSIT LYNNWOOD LINK EXTENSION



M:\NorthCorridor\CADD\PE-DatumShift\SHEETS\FEIS\12 PR-PP10.dwg Feb 27, 2015 - 2:37pm



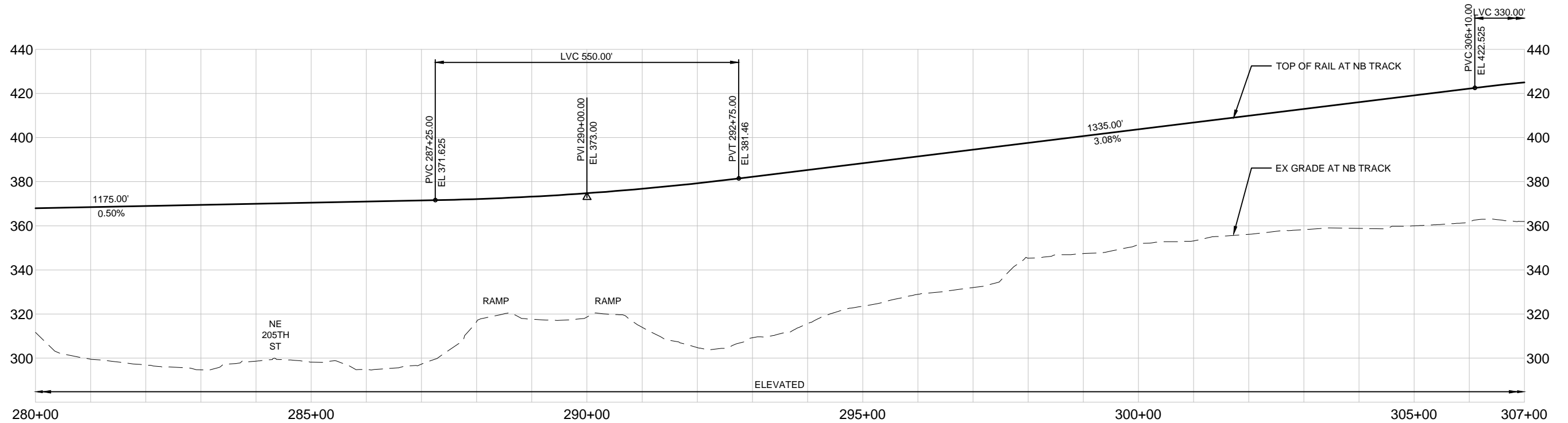
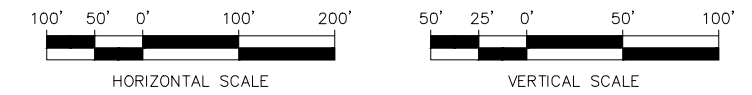
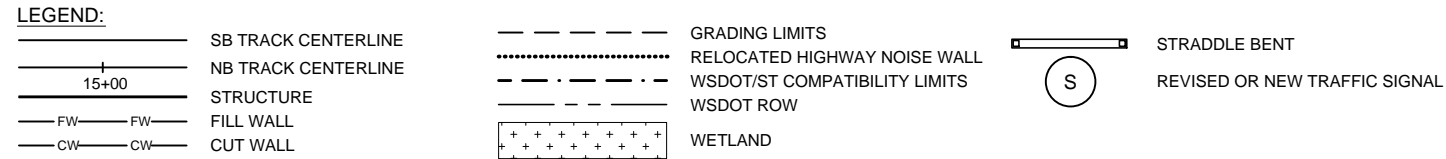
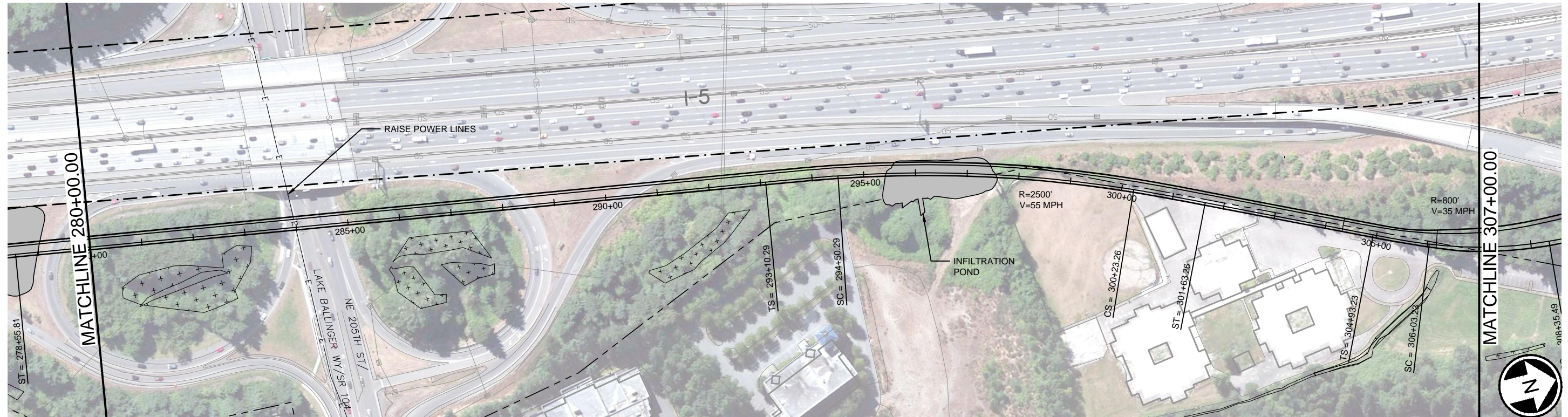
PREFERRED ALTERNATIVE - SEGMENT B2 (MODIFIED) TRACK PLAN & PROFILE

DWG NO. PR-PP10

SHEET 12 OF 59

REV. NO.

SOUND TRANSIT LYNNWOOD LINK EXTENSION



M:\NorthCorridor\CADD\PE-DatumShift\SHEETS\FEIS\13 PR-PP11.dwg Feb 27, 2015 - 2:50pm



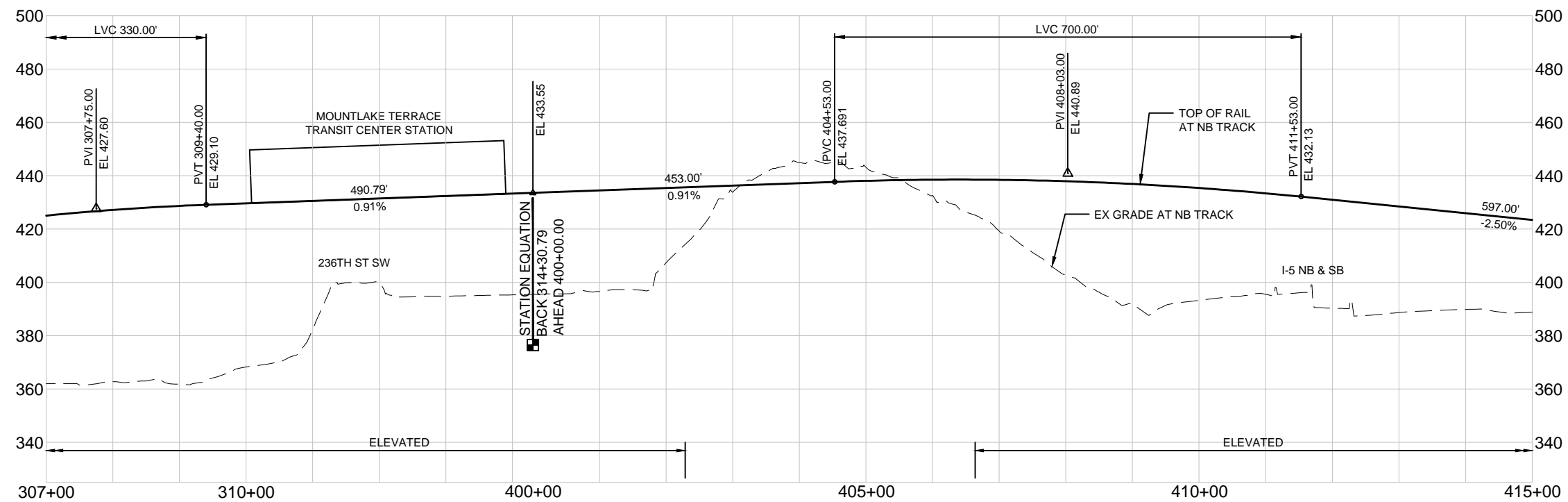
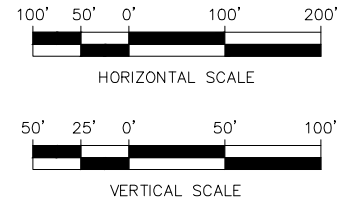
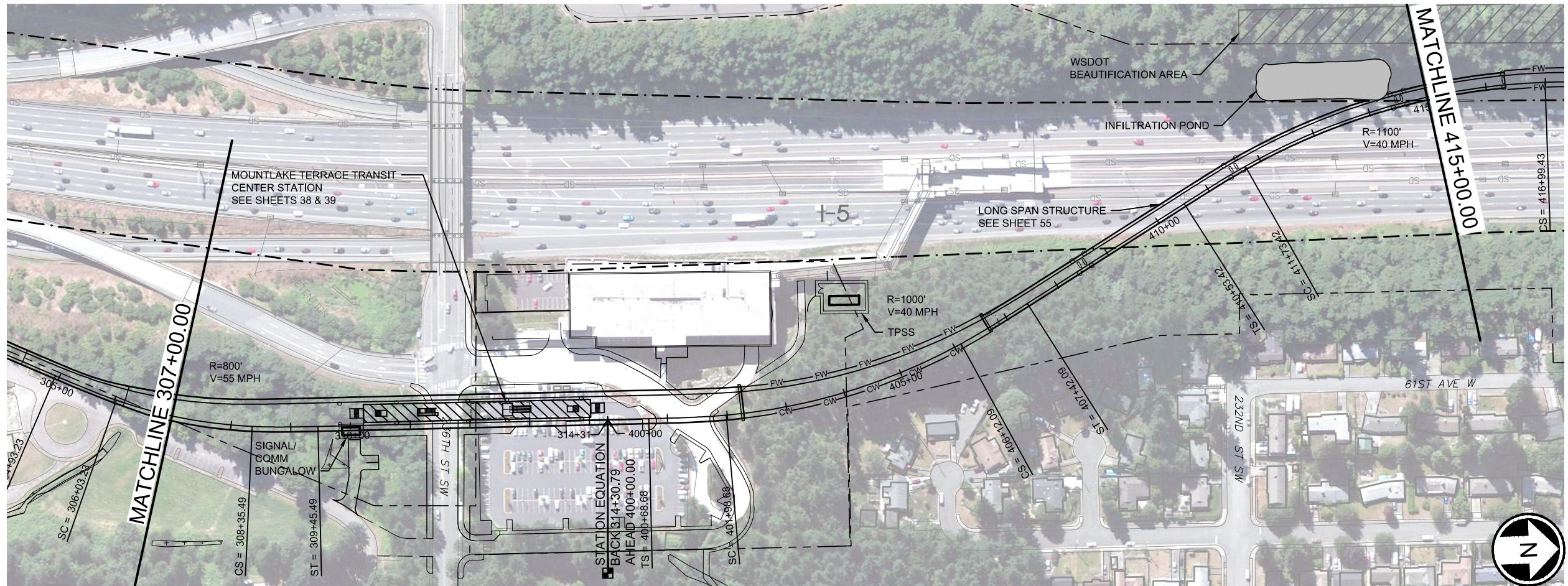
PREFERRED ALTERNATIVE - SEGMENT B TRACK PLAN & PROFILE

DWG NO. PR-PP11

SHEET 13 OF 59

REV. NO.

SOUND TRANSIT LYNNWOOD LINK EXTENSION



- LEGEND:**
- SB TRACK CENTERLINE
 - NB TRACK CENTERLINE
 - STRUCTURE
 - FILL WALL
 - CUT WALL
 - GRADING LIMITS
 - RELOCATED HIGHWAY NOISE WALL
 - WSDOT/ST COMPATIBILITY LIMITS
 - WSDOT ROW
 - WETLAND
 - STRADDLE BENT
 - REVISED OR NEW TRAFFIC SIGNAL

M:\NorthCorridor\CADD\PE-DatumShift\SHEETS\FEIS\14 PR-PP12.dwg Feb 27, 2015 - 3:02pm



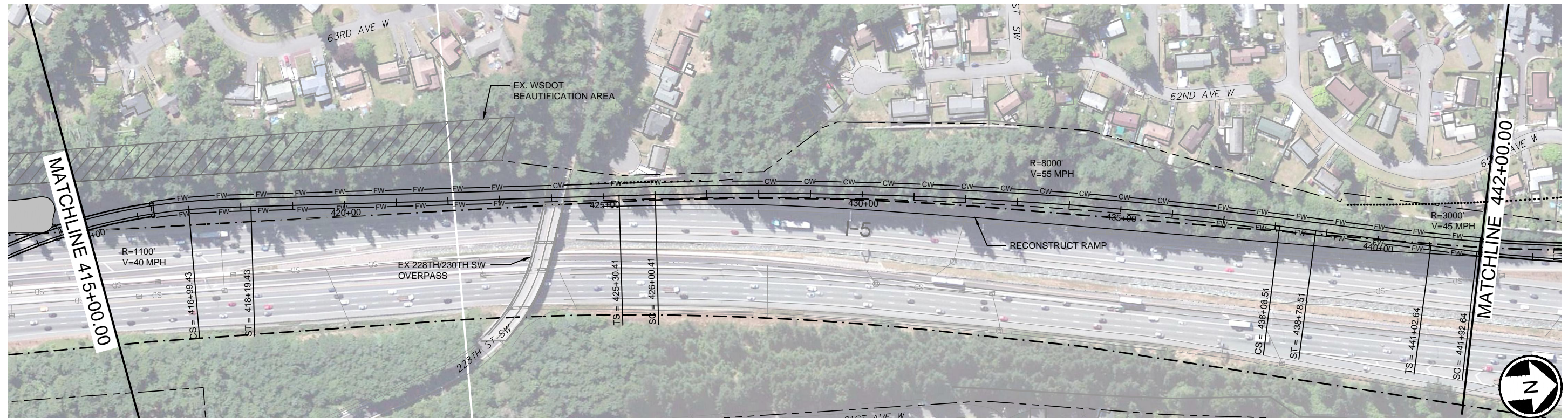
PREFERRED ALTERNATIVE - SEGMENT B TRACK PLAN & PROFILE

DWG NO. PR-PP12

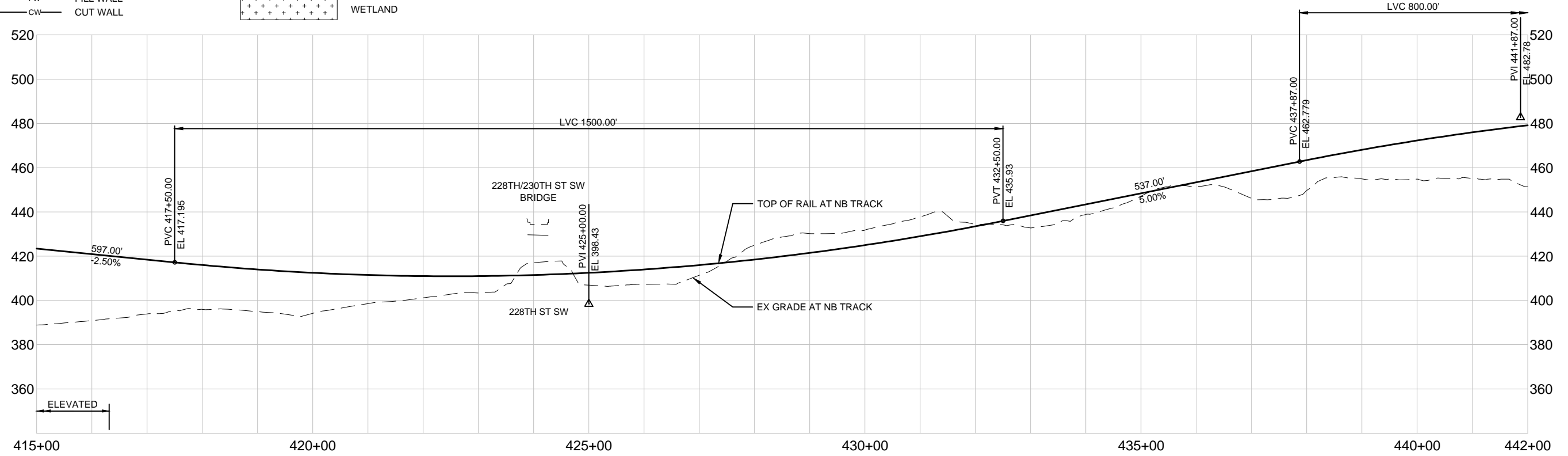
SHEET 14 OF 59

REV. NO.

SOUND TRANSIT LYNNWOOD LINK EXTENSION



- LEGEND:**
- SB TRACK CENTERLINE
 - NB TRACK CENTERLINE
 - 15+00 STRUCTURE
 - FW-FW FILL WALL
 - CW-CW CUT WALL
 - GRADING LIMITS
 - RELOCATED HIGHWAY NOISE WALL
 - WSDOT/ST COMPATIBILITY LIMITS
 - WSDOT ROW
 - WETLAND
 - STRADDLE BENT
 - REVISED OR NEW TRAFFIC SIGNAL



M:\NorthCorridor\CADD\PE-DatumShift\SHEETS\FEIS\15 PR-PP13.dwg Feb 27, 2015 - 3:12pm



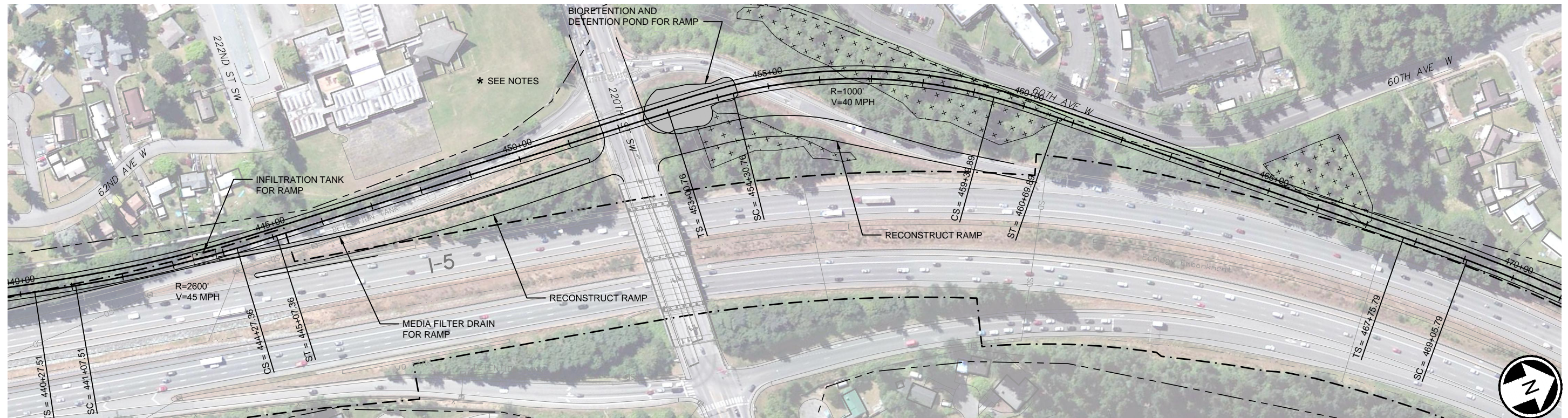
PREFERRED ALTERNATIVE - SEGMENT B TRACK PLAN & PROFILE

DWG NO. PR-PP13

SHEET 15 OF 59

REV. NO.

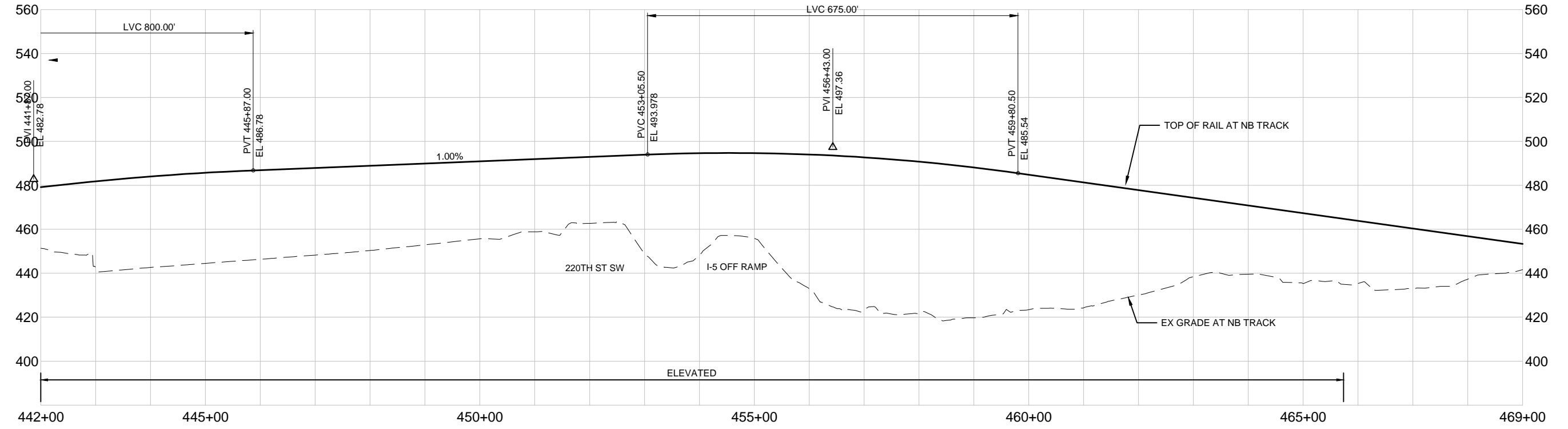
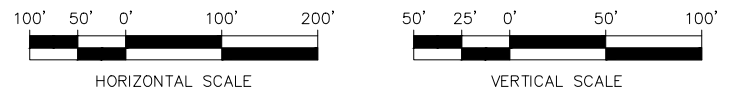
SOUND TRANSIT LYNNWOOD LINK EXTENSION



LEGEND:

- | | | |
|-----------------------|-------------------------------------|-----------------------------------|
| — SB TRACK CENTERLINE | --- GRADING LIMITS | — STRADDLE BENT |
| — NB TRACK CENTERLINE | RELOCATED HIGHWAY NOISE WALL | ○ S REVISED OR NEW TRAFFIC SIGNAL |
| 15+00 STRUCTURE | - - - WSDOT/ST COMPATIBILITY LIMITS | |
| FW FILL WALL | --- WSDOT ROW | |
| CW CUT WALL | + + + WETLAND | |

NOTES:
 1. FOR PREFERRED ALTERNATIVE OPTION, 220TH STREET SW STATION OPTION, SEE SHEETS 23 & 24.



M:\NorthCorridor\CADD\PE-DatumShift\SHEETS\FEIS\16 PR-PP14.dwg Feb 27, 2015 - 3:18pm



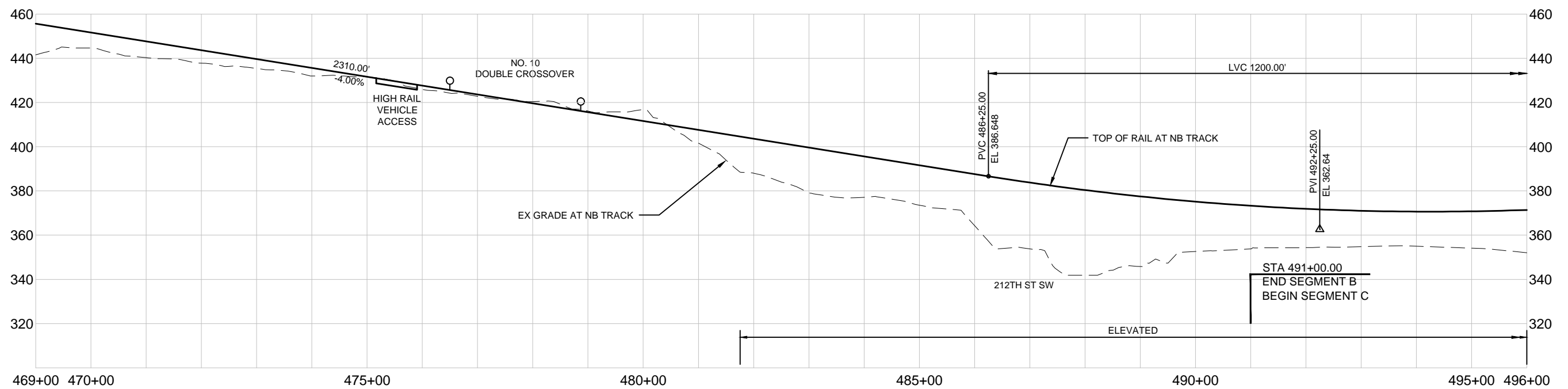
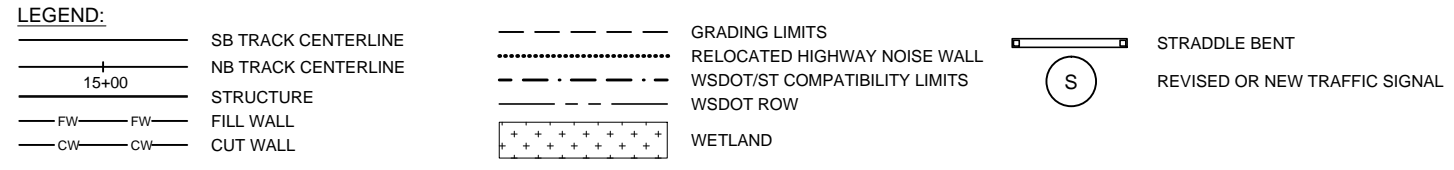
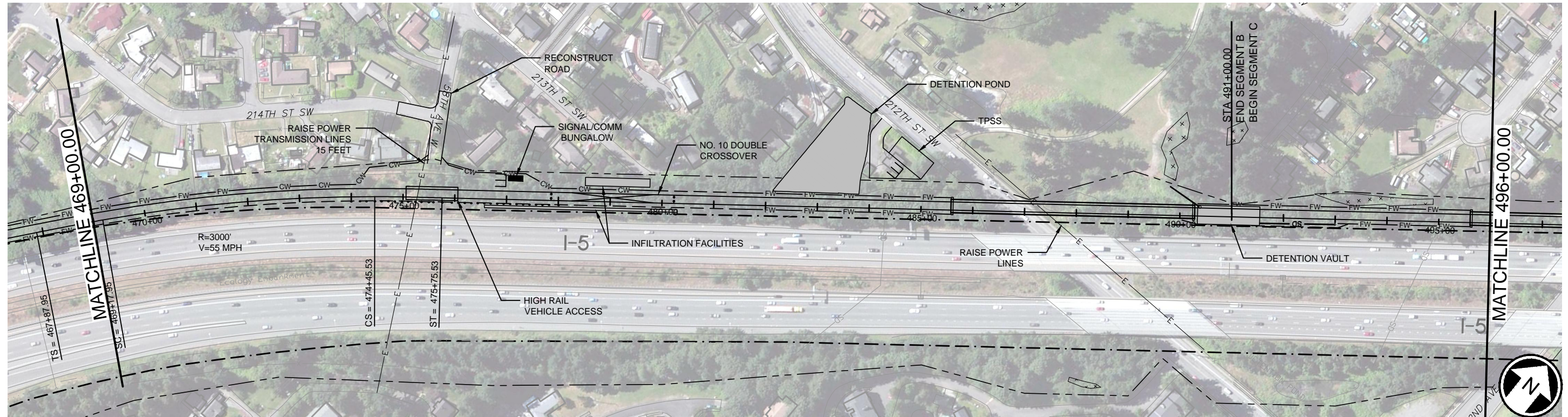
**PREFERRED ALTERNATIVE - SEGMENT B
 TRACK PLAN & PROFILE**

DWG NO. PR-PP14

SHEET 16 OF 59

REV. NO.

SOUND TRANSIT LYNNWOOD LINK EXTENSION



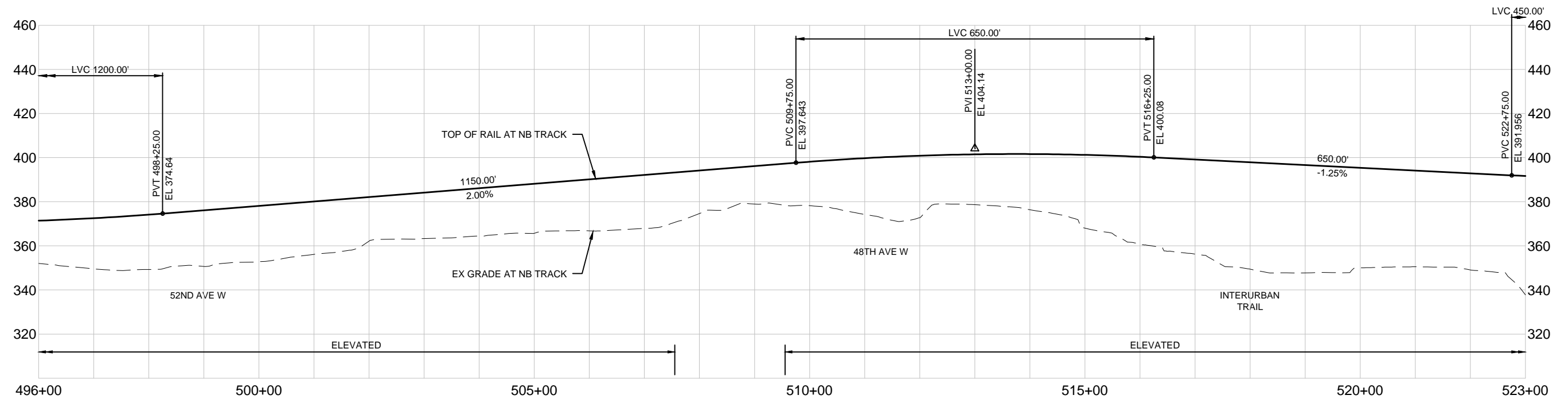
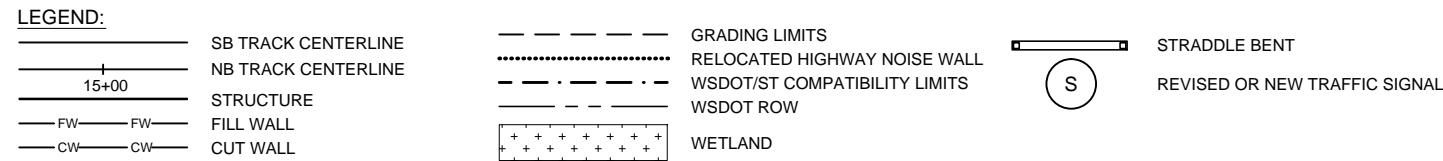
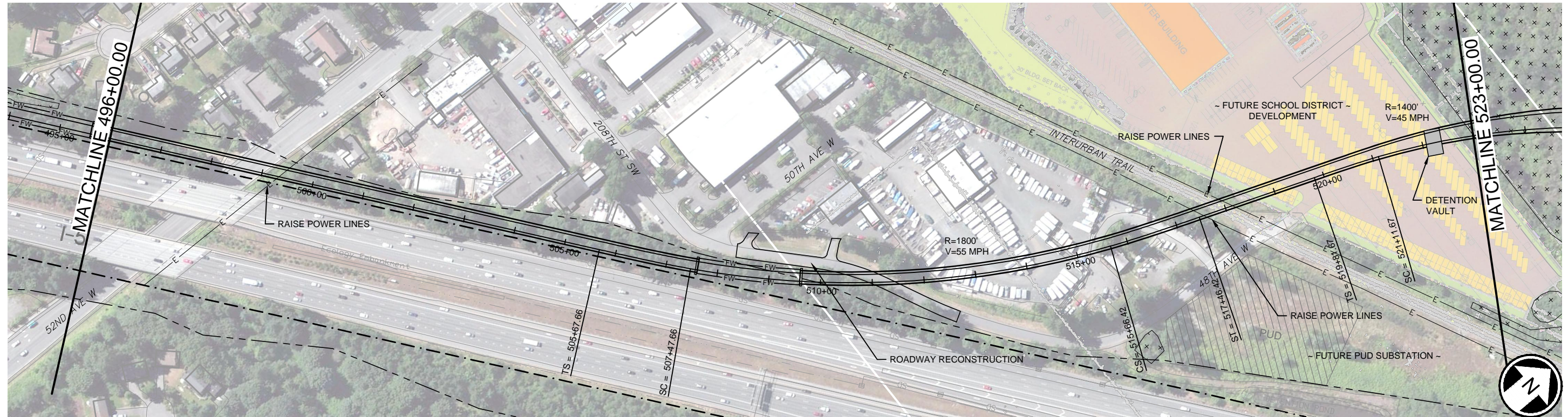
M:\NorthCorridor\CADD\PE-DatumShift\SHEETS\FEIS\17 PR-PP15.dwg Feb 27, 2015 - 3:24pm



PREFERRED ALTERNATIVE - SEGMENT B TRACK PLAN & PROFILE

DWG NO. PR-PP15
SHEET 17 OF 59
REV. NO. _____

SOUND TRANSIT LYNNWOOD LINK EXTENSION



M:\NorthCorridor\CADD\PE-DatumShift\SHEETS\FEIS\18 PR-PP16.dwg Mar 02, 2015 - 12:44pm



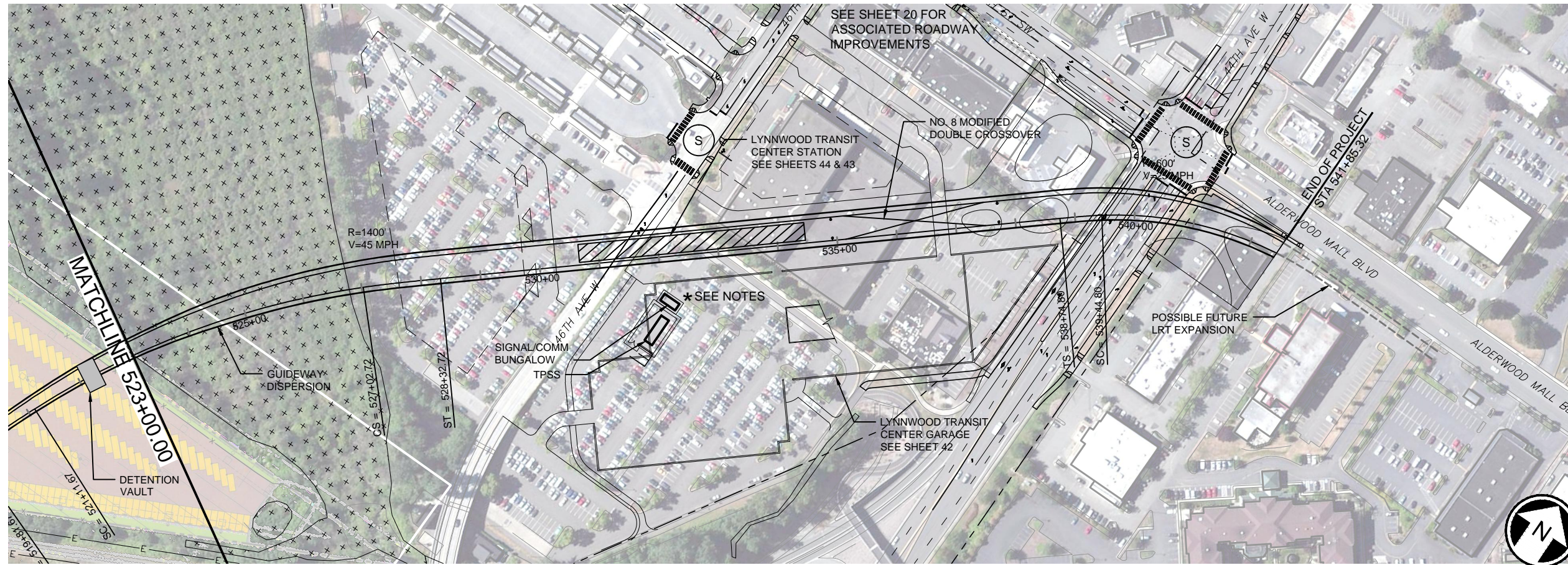
PREFERRED ALTERNATIVE - SEGMENT C TRACK PLAN & PROFILE

DWG NO. PR-PP16

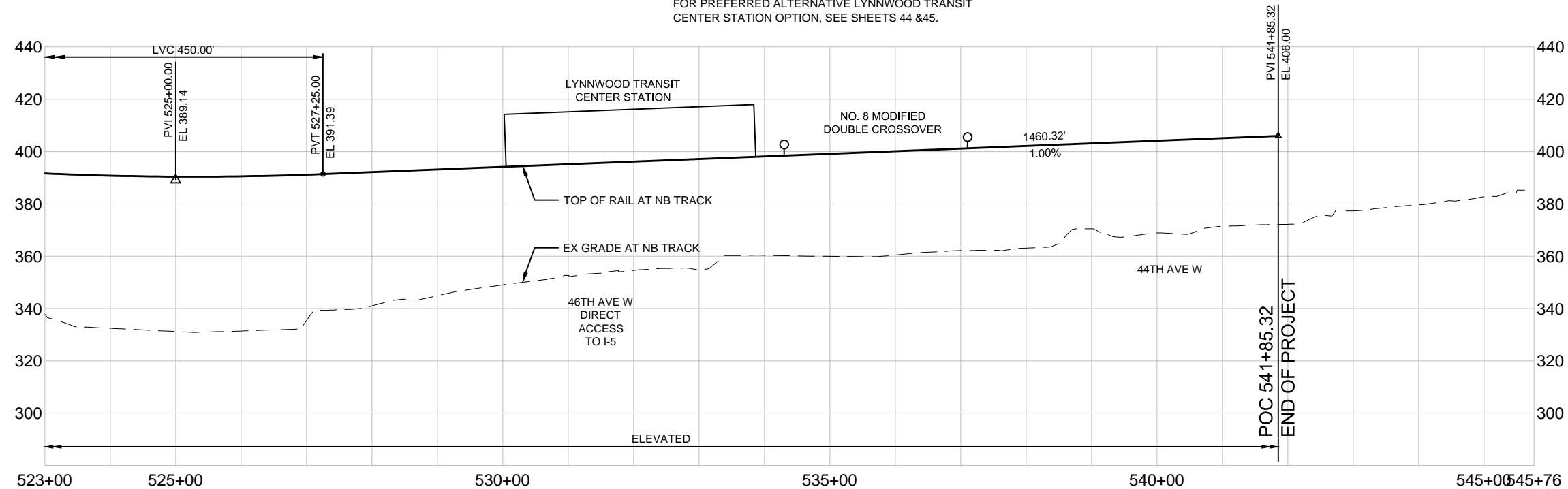
SHEET 18 OF 59

REV. NO.

SOUND TRANSIT LYNNWOOD LINK EXTENSION



NOTES:
FOR PREFERRED ALTERNATIVE LYNNWOOD TRANSIT CENTER STATION OPTION, SEE SHEETS 44 & 45.



LEGEND:

	SB TRACK CENTERLINE
	NB TRACK CENTERLINE
	STRUCTURE
	FILL WALL
	CUT WALL
	GRADING LIMITS
	RELOCATED HIGHWAY NOISE WALL
	WSDOT/ST COMPATIBILITY LIMITS
	WSDOT ROW
	WETLAND
	STRADDLE BENT
	REVISED OR NEW TRAFFIC SIGNAL

M:\NorthCorridor\CADD\PE-DatumShift\SHEETS\FEIS\19 PR-PP17.dwg Mar 02, 2015 - 1:13pm



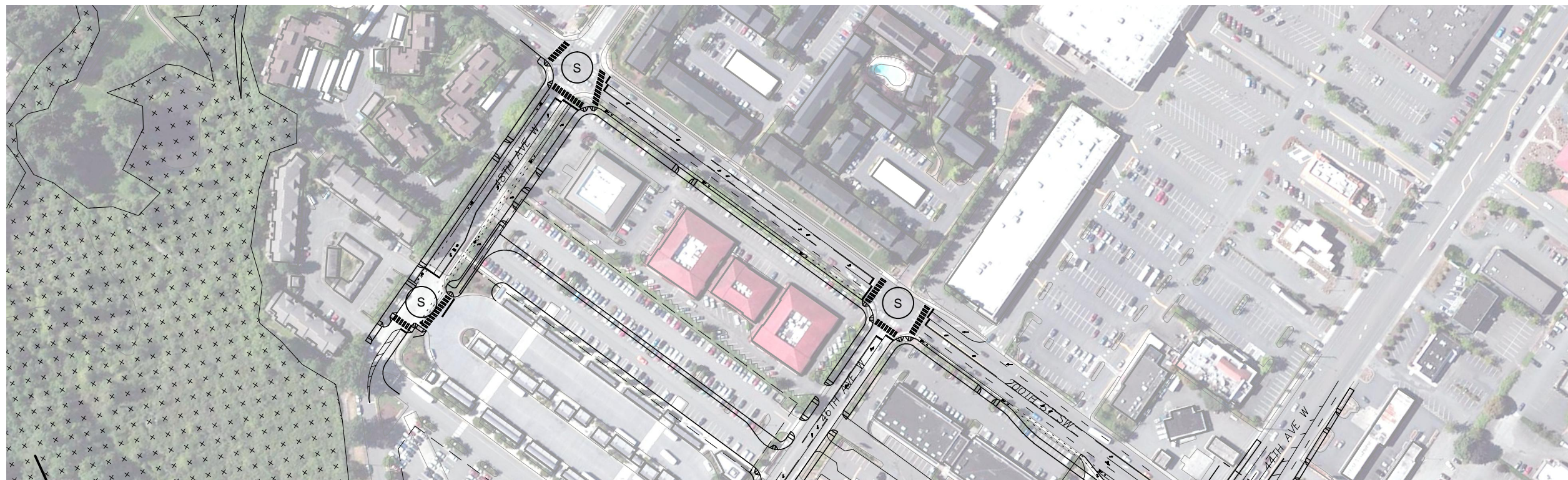
PREFERRED ALTERNATIVE - SEGMENT C TRACK PLAN & PROFILE

DWG NO. PR-PP17

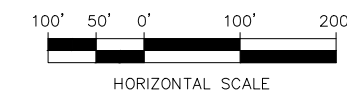
SHEET 19 OF 59

REV. NO. 2

SOUND TRANSIT LYNNWOOD LINK EXTENSION



SEE SHEET 19 FOR TRACK/STATION DETAILS



LEGEND:

	SB TRACK CENTERLINE
	NB TRACK CENTERLINE
	STRUCTURE
	FILL WALL
	CUT WALL
	GRADING LIMITS
	RELOCATED HIGHWAY NOISE WALL
	WSDOT/ST COMPATIBILITY LIMITS
	WSDOT ROW
	WETLAND
	STRADDLE BENT
	REVISED OR NEW TRAFFIC SIGNAL

M:\NorthCorridor\CADD\PE-DatumShift\SHEETS\FEIS\20 PR-PP18.dwg Mar 02, 2015 - 1:19pm



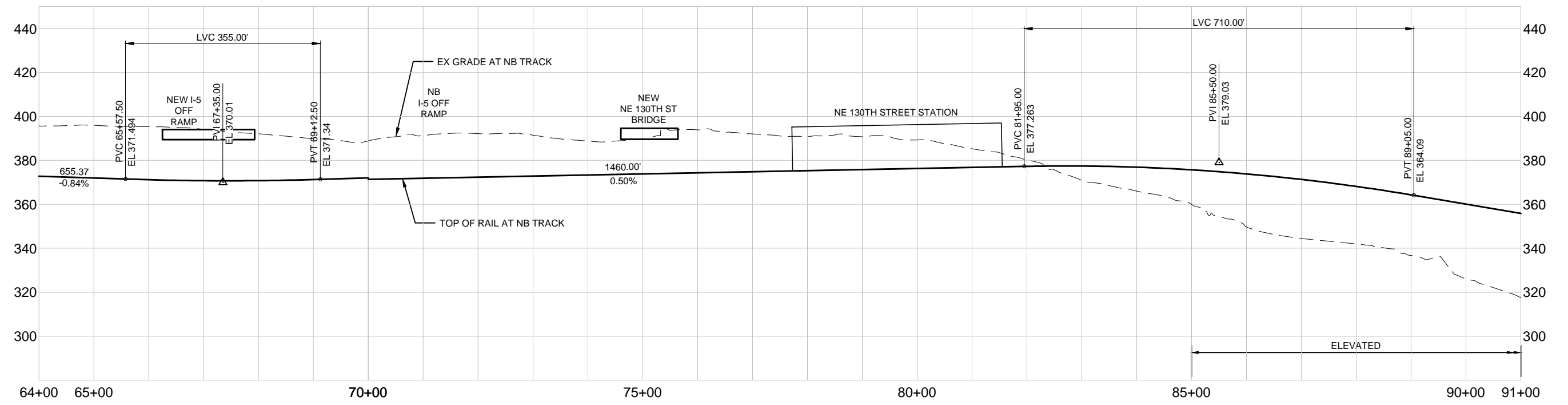
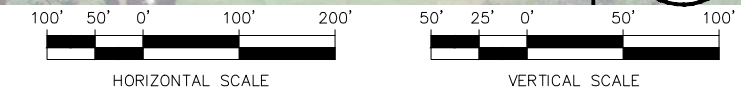
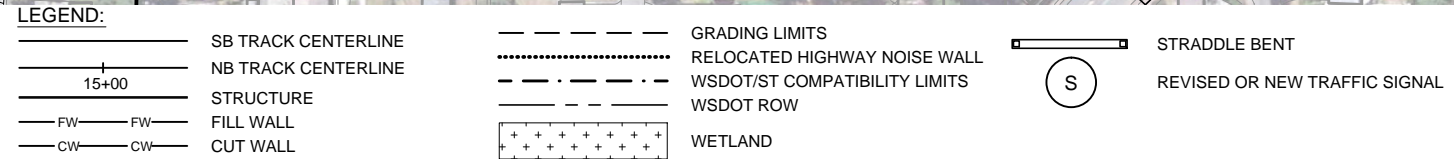
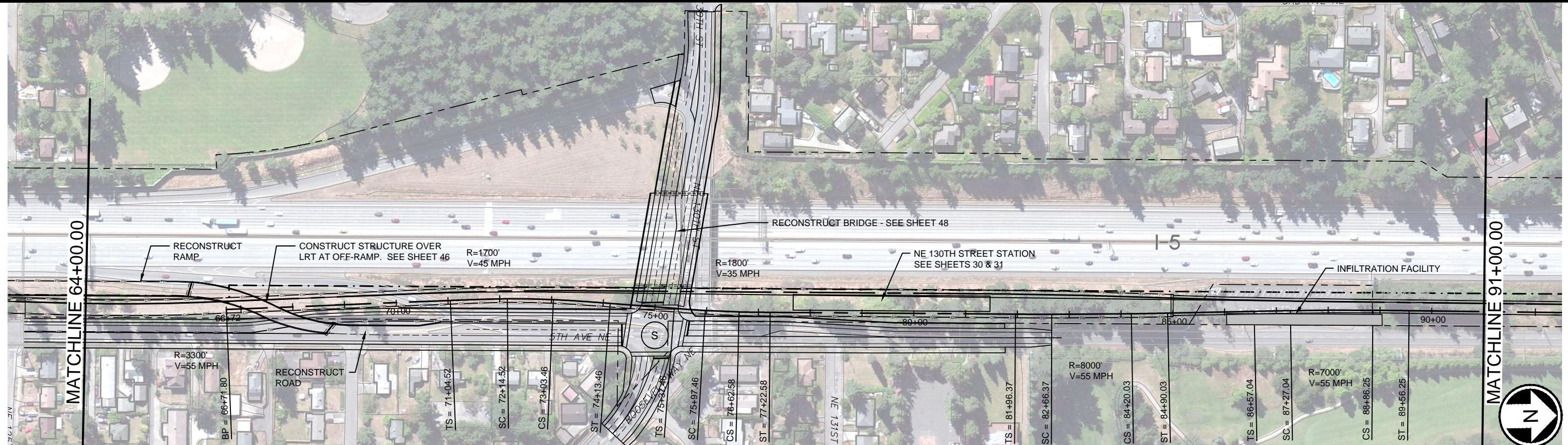
**PREFERRED ALTERNATIVE - SEGMENT C
ASSOCIATED ROADWAY IMPROVEMENTS**

DWG NO. PR-PP18

SHEET 20 OF 59

REV. NO. 2

SOUND TRANSIT LYNNWOOD LINK EXTENSION



M:\NorthCorridor\CADD\PE-DatumShift\SHEETS\FEIS\21 MD2-PP03.dwg Mar 02, 2015 - 1:30pm



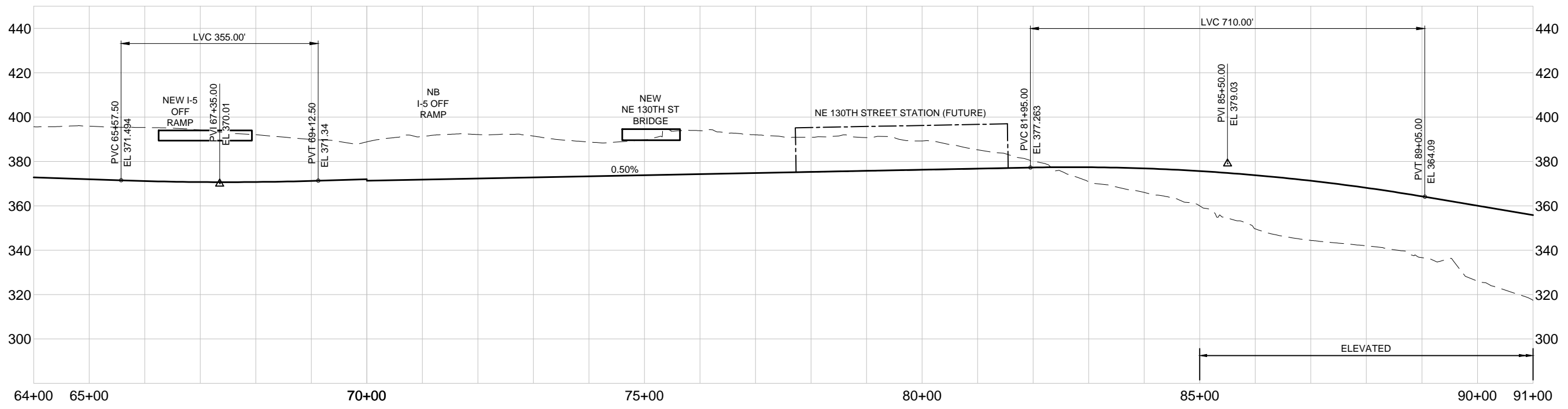
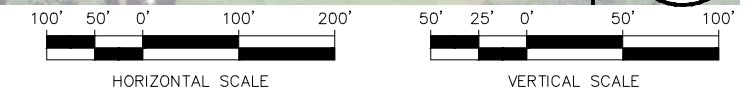
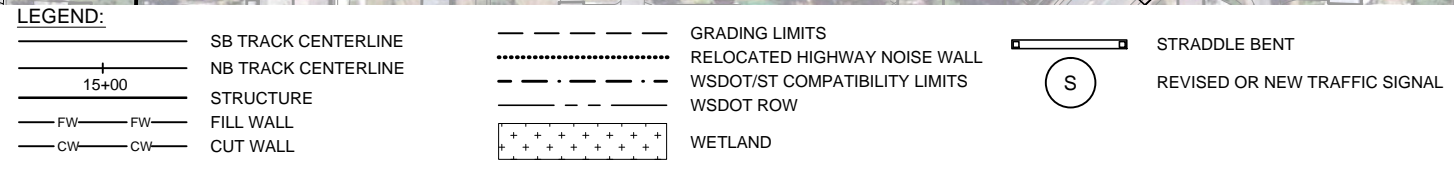
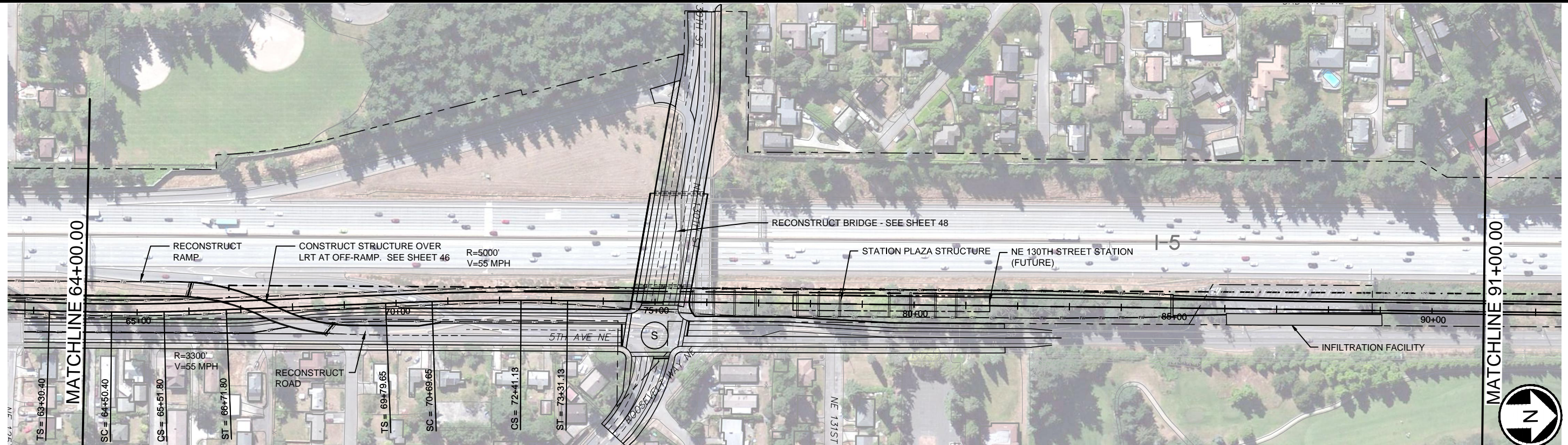
PREFERRED ALTERNATIVE OPTION SEGMENT A NE 130TH STREET STATION OPTION - TRACK PLAN & PROFILE

DWG NO. MD2-PP03

SHEET 21 OF 59

REV. NO.

SOUND TRANSIT LYNNWOOD LINK EXTENSION



M:\NorthCorridor\CADD\PE-DatumShift\SHEETS\FEIS\22 MD3-PP03.dwg Mar 02, 2015 - 1:27pm



PREFERRED ALTERNATIVE OPTION SEGMENT A NE 130TH STREET OPTION (FUTURE) STATION TRACK PLAN & PROFILE

DWG NO. MD3-PP03

SHEET 22 OF 59

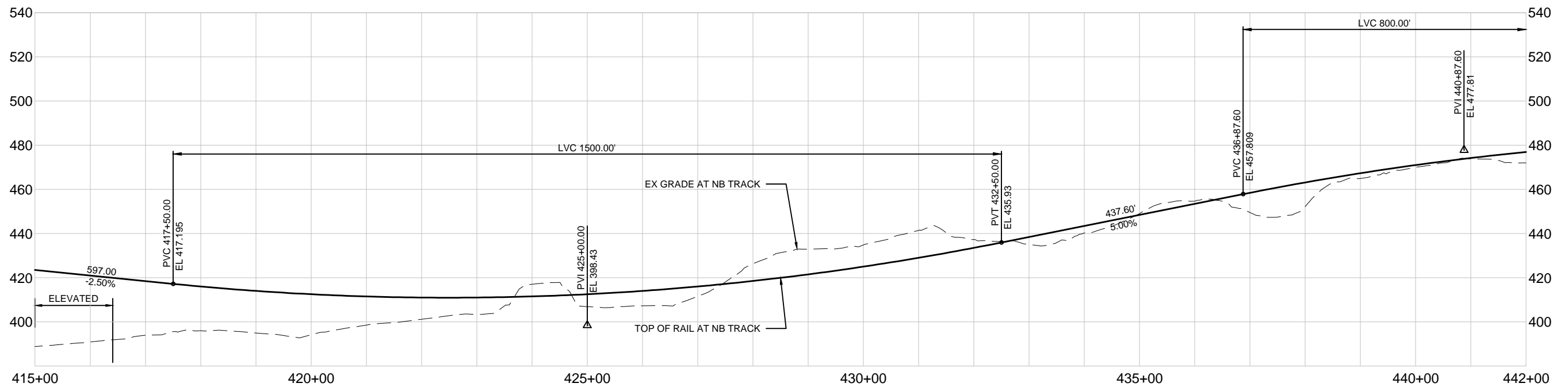
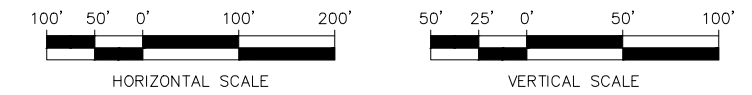
REV. NO.

SOUND TRANSIT LYNNWOOD LINK EXTENSION



LEGEND:

- | | | | | | |
|--|---------------------|--|-------------------------------|--|-------------------------------|
| | SB TRACK CENTERLINE | | GRADING LIMITS | | STRADDLE BENT |
| | NB TRACK CENTERLINE | | RELOCATED HIGHWAY NOISE WALL | | REVISED OR NEW TRAFFIC SIGNAL |
| | STRUCTURE | | WSDOT/ST COMPATIBILITY LIMITS | | |
| | FILL WALL | | WSDOT ROW | | |
| | CUT WALL | | WETLAND | | |



M:\NorthCorridor\CADD\PE-DatumShift\SHEETS\FEIS\23 MD10-PP13.dwg Mar 02, 2015 - 1:39pm



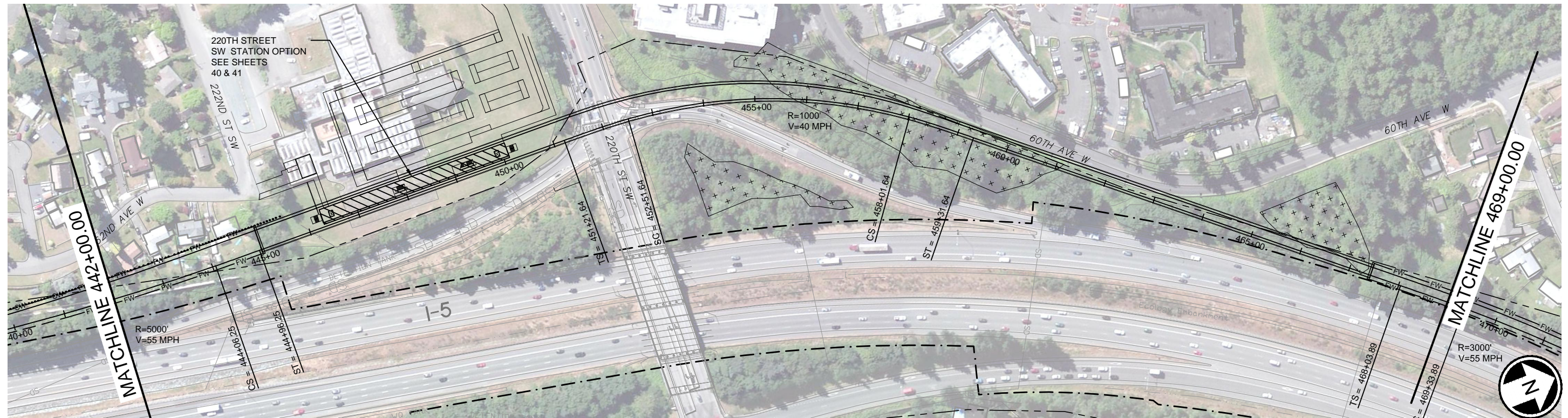
**PREFERRED ALTERNATIVE OPTION SEGMENT B
220TH STREET SW STATION OPTION - TRACK PLAN & PROFILE**

DWG NO. MD10-PP13

SHEET 23 OF 59

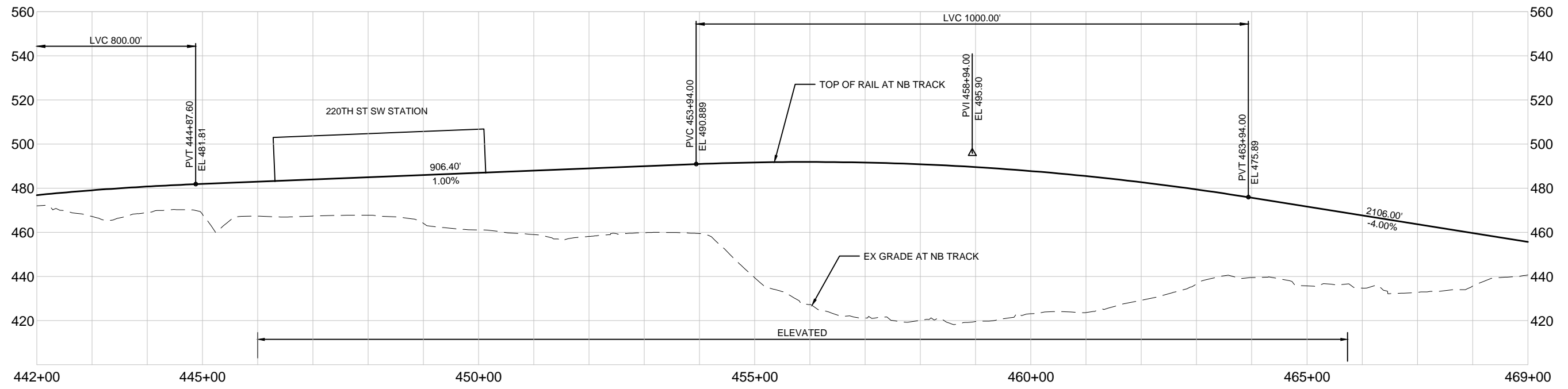
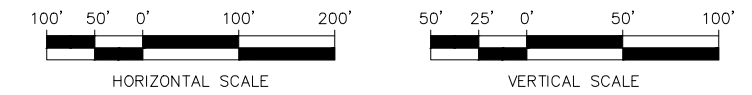
REV. NO.

SOUND TRANSIT LYNNWOOD LINK EXTENSION



LEGEND:

- | | | | | | |
|--|---------------------|--|-------------------------------|--|-------------------------------|
| | SB TRACK CENTERLINE | | GRADING LIMITS | | STRADDLE BENT |
| | NB TRACK CENTERLINE | | RELOCATED HIGHWAY NOISE WALL | | REVISED OR NEW TRAFFIC SIGNAL |
| | STRUCTURE | | WSDOT/ST COMPATIBILITY LIMITS | | |
| | FILL WALL | | WSDOT ROW | | |
| | CUT WALL | | WETLAND | | |



M:\NorthCorridor\CADD\PE-DatumShift\SHEETS\FEIS\24 MD10-PP14.dwg Mar 02, 2015 - 1:44pm



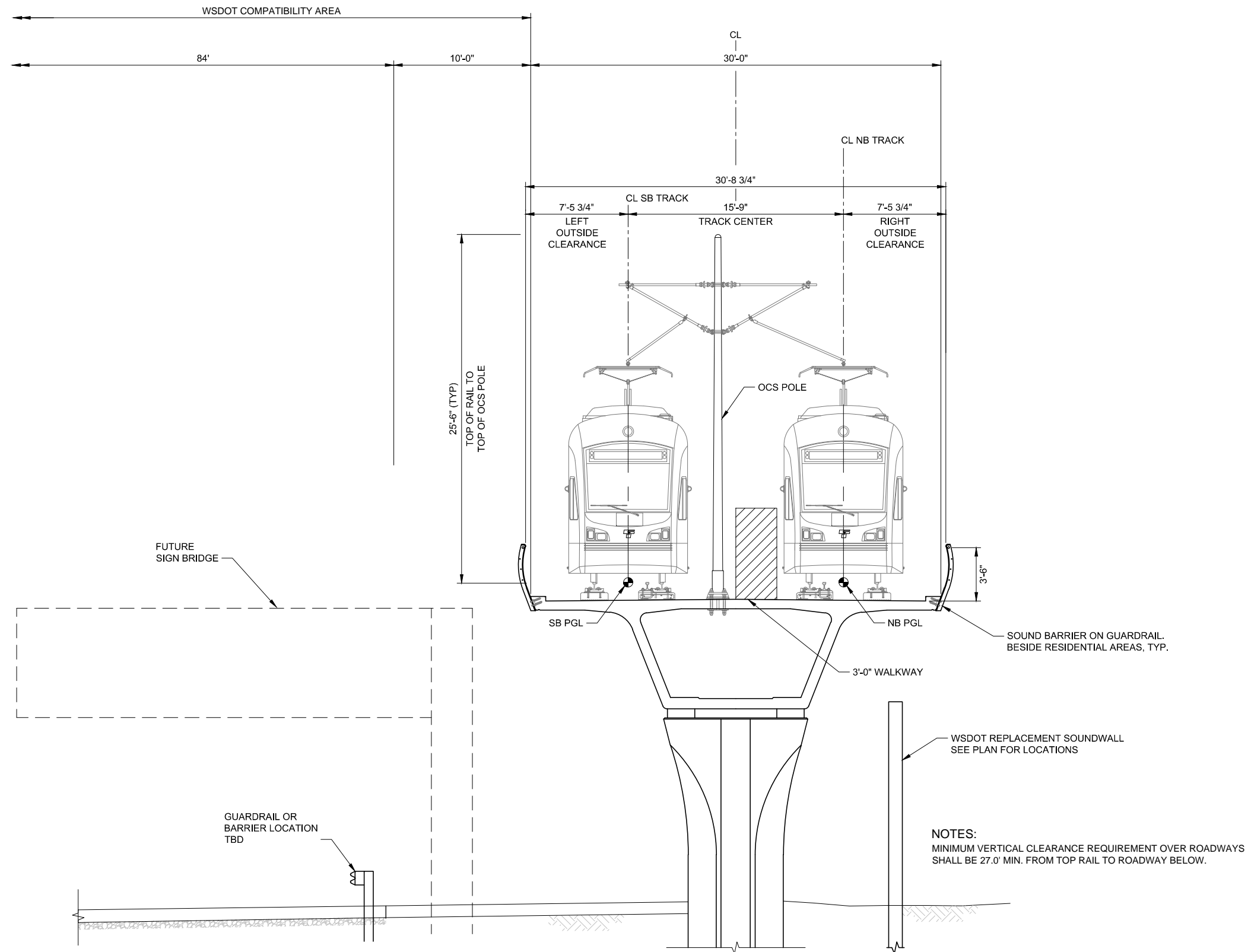
**PREFERRED ALTERNATIVE OPTION SEGMENT B
220TH STREET SW STATION OPTION - TRACK PLAN & PROFILE**

DWG NO. MD10-PP14

SHEET 24 OF 59

REV. NO. _____

SOUND TRANSIT LYNNWOOD LINK EXTENSION



ELEVATED TYPICAL SECTION - DUAL TRACK

NTS

M:\NorthCorridor\CADD\PE-DatumShift\SHEETS\FEIS\TypSect\FEIS-Typ Sect.dwg Mar 02, 2015 - 11:06am



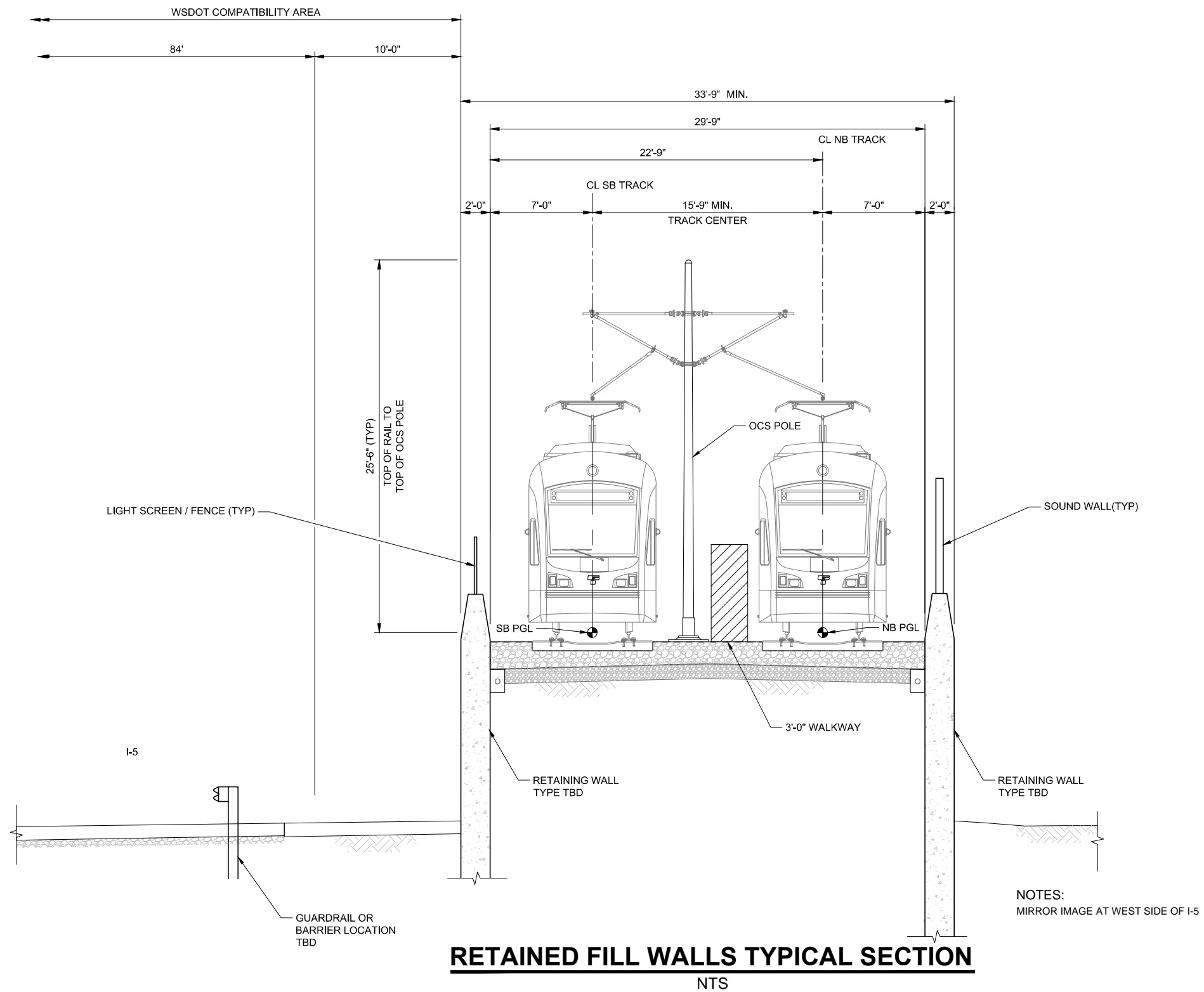
**PREFERRED ALTERNATIVE
TYPICAL SECTIONS**

DWG NO. _____ SECT-1

SHEET 25 OF 59

REV. NO. _____

SOUND TRANSIT LYNNWOOD LINK EXTENSION



M:\NorthCorridor\CADD\PE-DatumShift\SHEETS\FEIS\TypSect\FEIS-Typ Sect.dwg Mar 02, 2015 - 11:07am



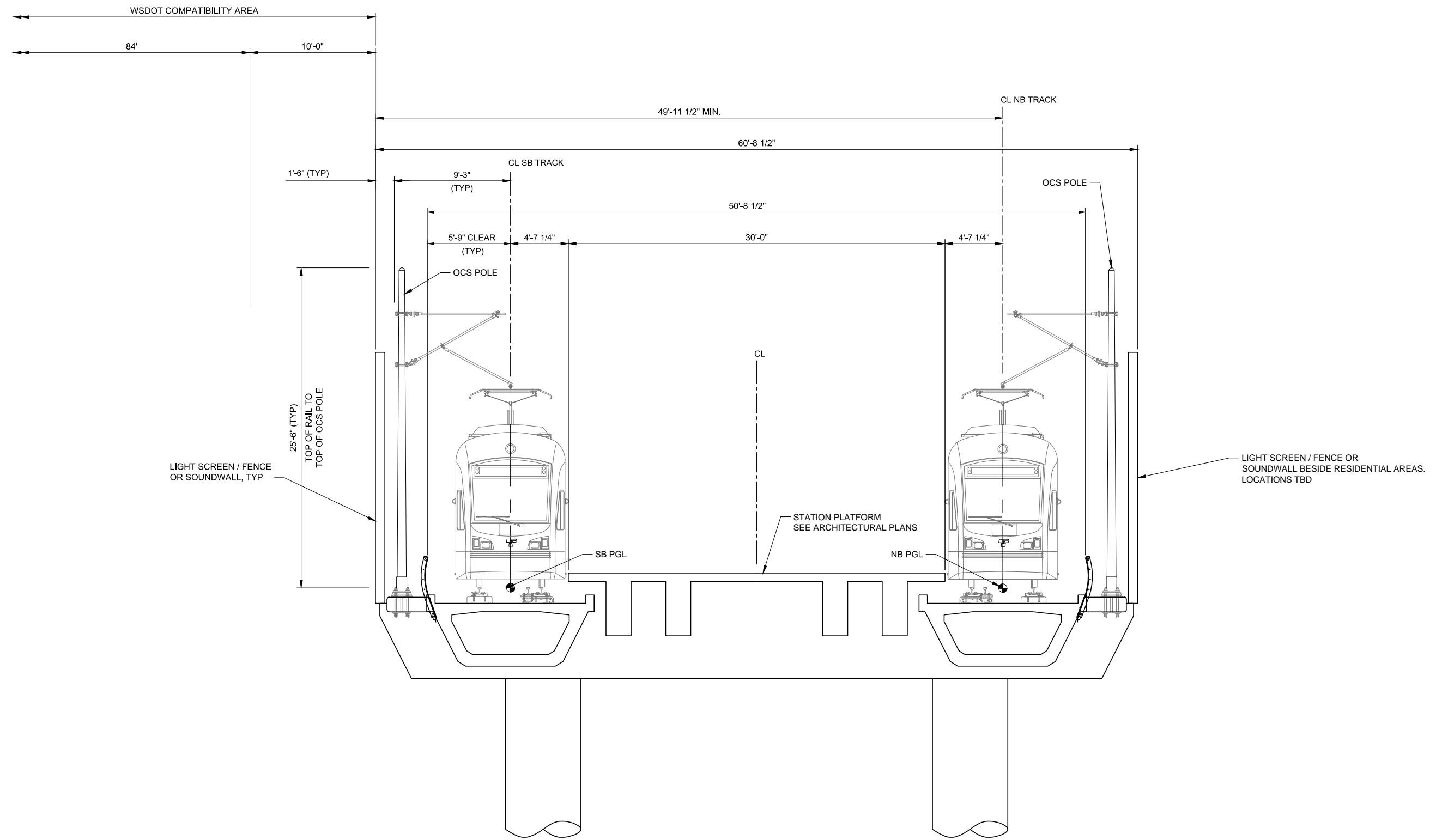
**PREFERRED ALTERNATIVE
TYPICAL SECTIONS**

DWG NO. _____ SECT-2

SHEET 26 OF 59

REV. NO. _____

SOUND TRANSIT LYNNWOOD LINK EXTENSION



ELEVATED CENTER STATION TYPICAL SECTION

NTS

NE 145TH STREET STATION
 MOUNTLAKE TERRACE TRANSIT CENTER STATION
 LYNNWOOD TRANSIT CENTER STATION

M:\NorthCorridor\CADD\PE-DatumShift\SHEETS\FEIS\TypSect\FEIS-Typ Sect.dwg Mar 02, 2015 - 11:08am



**PREFERRED ALTERNATIVE
 TYPICAL SECTIONS**

DWG NO. SECT-3

SHEET 27 OF 59

REV. NO.