



SOUND TRANSIT LYNNWOOD LINK EXTENSION



HEWITT

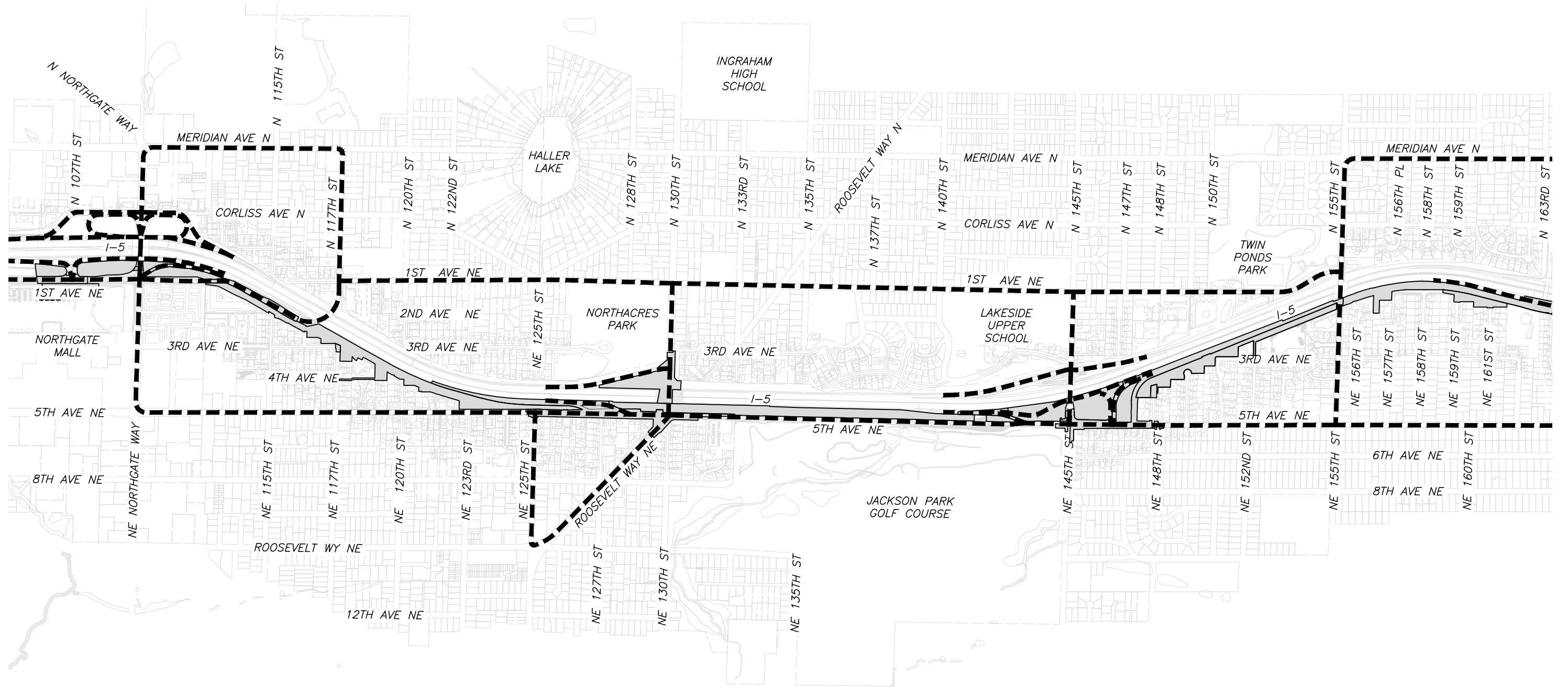
paula **ITO CADD** services, llc

Part 3 CONSTRUCTION STAGING AREAS AND TRUCK AND HAUL ROUTE PLANS

APRIL 2015

REVISION NO.	DATE	SHEETS
0		
1	7-13-2012	ALL
2	10-12-2012	ALL
3	5-2013	4, 26, 42, 80-83, 102-105

02/20/15 | 3:31 PM | ITOP
J:\LLE\L\WOODLINK\EXT\PE\DRAWINGS\CIVIL-CONSTRUCTION\LLE-STD-CHP001.DWG



LEGEND:

- POTENTIAL TRUCK AND HAUL ROUTE
- POTENTIAL CONSTRUCTION & STAGING AREA



No.	DATE	DSN	CHK	APP	REVISION

DESIGNED BY: R. JAHNS
DRAWN BY: R. JAHNS
CHECKED BY: G. GRIJALVA
APPROVED BY: B. PHILLIPS



SUBMITTED BY:	DATE:	REVIEWED BY:	DATE:
---------------	-------	--------------	-------



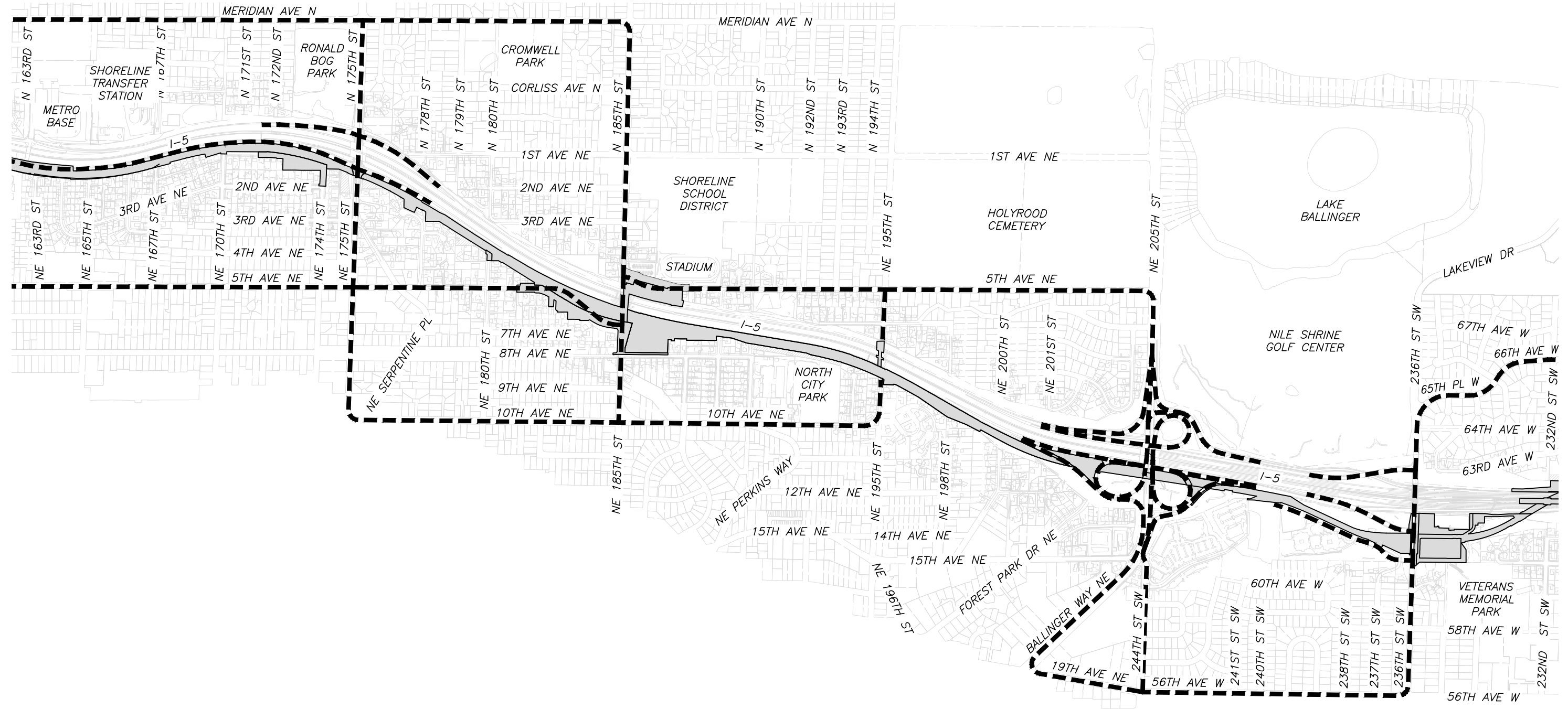
SCALE: 1"=500'
FILENAME: LLE-STD-CHP001
CONTRACT No.:
DATE: 3/6/2015

**SOUND TRANSIT
LYNNWOOD LINK EXTENSION**

STAGING AREA AND
TRUCK AND HAUL ROUTE PLANS

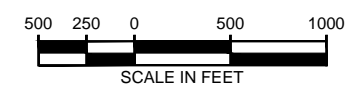
DRAWING No.: STD-CHP001	
LOCATION ID:	
SHEET No.:	REV:
3-1	

Xrefs:
 LLE-GB-TB2x34
 xLLE-STD-CHP100
 xLLE-STD-CP100
 xLLE-4E27N33SW-SF
 xLLE-4E26N04NW-SF
 xLLE-4E26N05NE-SF
 xLLE-4E26N05NW-SF
 xLLE-4E26N05SE-SF
 xLLE-4E26N05SW-SF
 xLLE-4E26N06SE-SF
 xLLE-4E26N08NE-SF
 xLLE-4E26N08NW-SF
 xLLE-4E26N08SW-SF
 xLLE-4E26N17NW-SF
 xLLE-4E27N32NE-SF
 xLLE-4E27N32NW-SF
 xLLE-4E27N32SE-SF
 xLLE-4E27N32SW-SF
 xLLE-4E27N33NW-SF
 xLLE-4E27N33SW-RX
 xLLE-4E26N04NW-RX
 xLLE-4E26N05NE-RX
 xLLE-4E26N05SW-RX
 xLLE-4E26N06SE-RX
 xLLE-4E26N07NE-RX
 xLLE-4E26N07SE-RX
 xLLE-4E26N08NE-RX
 xLLE-4E26N08NW-RX
 xLLE-4E26N08SW-RX
 xLLE-4E26N17NE-RX
 xLLE-4E26N17NW-RX
 xLLE-4E26N18NE-RX
 xLLE-4E27N32NE-RX
 xLLE-4E27N32NW-RX
 xLLE-4E27N32SE-RX
 xLLE-4E27N32SW-RX
 xLLE-4E27N33NW-RX



LEGEND:

- POTENTIAL TRUCK AND HAUL ROUTE
- POTENTIAL CONSTRUCTION & STAGING AREA



02/20/15 | 3:32 PM | ITOP
 J:\LLE\L1\NWOOD\LINKEXT\PE\DRAWINGS\CIVIL-CONSTRUCTION\LLE-STD-CHP002.DWG

No.	DATE	DSN	CHK	APP	REVISION

DESIGNED BY:
R. JAHNS
 DRAWN BY:
R. JAHNS
 CHECKED BY:
G. GRIJALVA
 APPROVED BY:
B. PHILLIPS



SUBMITTED BY: DATE: REVIEWED BY: DATE:

LINE IS 1" AT FULL SCALE



SCALE:
1"=500'
 FILENAME:
LLE-STD-CHP002
 CONTRACT No.:
DATE:
3/6/2015

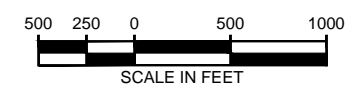
**SOUND TRANSIT
 LYNNWOOD LINK EXTENSION**
 STAGING AREA AND
 TRUCK AND HAUL ROUTE PLANS

DRAWING No.:
STD-CHP002
 LOCATION ID:
SHEET No.: REV:
3-2

Xrefs:
 LLE-GB-TR22x34
 xLLE-STD-CHP100
 xLLE-STD-DCP100
 xLLE-4E27N15SE-SF
 xLLE-4E27N15SW-SF
 xLLE-4E27N20SE-SF
 xLLE-4E27N21NE-SF
 xLLE-4E27N21NW-SF
 xLLE-4E27N21SE-SF
 xLLE-4E27N21SW-SF
 xLLE-4E27N22NE-SF
 xLLE-4E27N22NW-SF
 xLLE-4E27N22SE-SF
 xLLE-4E27N22SW-SF
 xLLE-4E27N28NE-SF
 xLLE-4E27N28NW-SF
 xLLE-4E27N28SW-SF
 xLLE-4E27N29NE-SF
 xLLE-4E27N29NW-SF
 xLLE-4E27N29SE-SF
 xLLE-4E27N32NE-SF
 xLLE-4E27N32NW-SF
 xLLE-4E27N33SW-SF
 xLLE-4E27N15SE-RX
 xLLE-4E27N15SW-RX
 xLLE-4E27N16SE-RX
 xLLE-4E27N20SE-RX
 xLLE-4E27N21NE-RX
 xLLE-4E27N21NW-RX
 xLLE-4E27N21SE-RX
 xLLE-4E27N21SW-RX
 xLLE-4E27N22NE-RX
 xLLE-4E27N22NW-RX
 xLLE-4E27N22SE-RX
 xLLE-4E27N22SW-RX
 xLLE-4E27N28NE-RX
 xLLE-4E27N28NW-RX
 xLLE-4E27N28SE-RX
 xLLE-4E27N28SW-RX
 xLLE-4E27N29NE-RX
 xLLE-4E27N29NW-RX
 xLLE-4E27N29SE-RX
 xLLE-4E27N29SW-RX
 xLLE-4E27N32NE-RX
 xLLE-4E27N32NW-RX
 xLLE-4E27N33NW-RX



LEGEND:
 - - - - - POTENTIAL TRUCK AND HAUL ROUTE
 [Shaded Box] POTENTIAL CONSTRUCTION & STAGING AREA



02/20/15 | 3:34 PM | ITOP
 J:\LLE\L1\NWOOD\LINK\EXT\PE\DRAWINGS\CIVIL-CONSTRUCTION\LLE-STD-CHP003.DWG

No.	DATE	DSN	CHK	APP	REVISION

DESIGNED BY:
R. JAHNS
 DRAWN BY:
R. JAHNS
 CHECKED BY:
G. GRIJALVA
 APPROVED BY:
B. PHILLIPS



SUBMITTED BY: _____ DATE: _____ REVIEWED BY: _____ DATE: _____

LINE IS 1" AT FULL SCALE



SCALE:
1"=500'
 FILENAME:
LLE-STD-CHP003
 CONTRACT No.: _____
 DATE:
3/6/2015

SOUND TRANSIT
LYNNWOOD LINK EXTENSION
 STAGING AREA AND
 TRUCK AND HAUL ROUTE PLANS

DRAWING No.: **STD-CHP003**
 LOCATION ID:
 SHEET No.: **3-3** REV:

