

A low-angle shot of a white and teal Sound Transit train at a station. The train's doors are open, and the 'SOUND TRANSIT' logo is visible on the side. The station's glass and steel structure is visible in the upper left corner.

Puyallup Station Access Improvements Project

SOUND TRANSIT

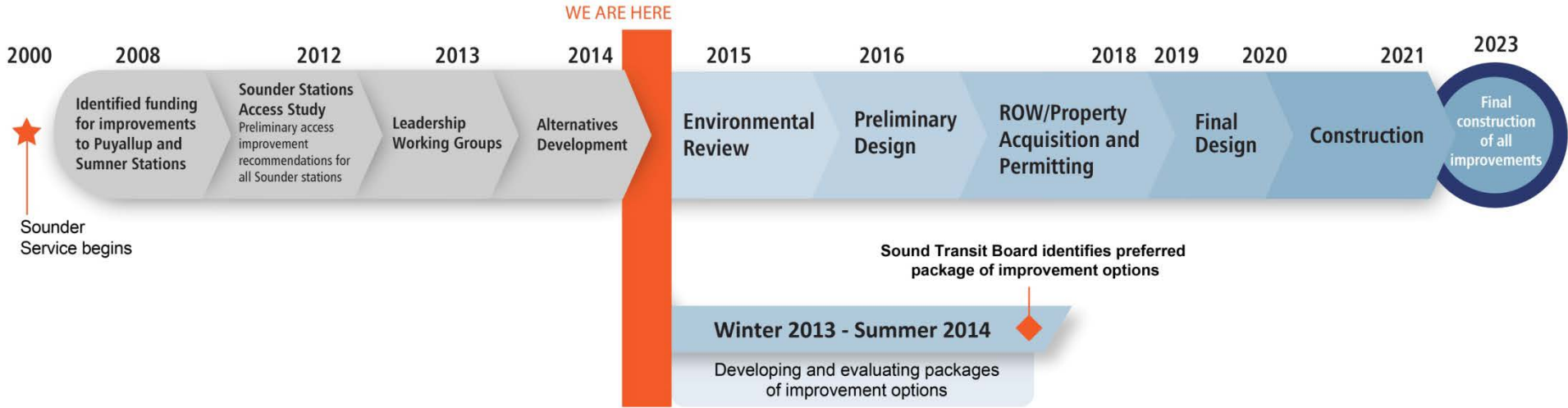
Presentation Overview

- Project Overview and Schedule
- Preview of May 14 Open House
 - Improvement Packages
 - Evaluation of Packages
 - Cost Estimates

Project Overview

- Sound Transit 2 includes Sounder access improvements
- Purpose: Improve access to the Puyallup Sounder station, focusing on pedestrian, bike, traffic/bus, and parking improvements
- Total Budget: \$55 million (2014 dollars)
- Schedule:
 - Sound Transit Board identifies preferred package mid-2014
 - Phase 2: Conceptual engineering/environmental review mid-2015
 - Construct all improvements by 2023

Schedule



Goals

- Provide improved access to Sounder riders
- Benefit the local community
- Support Sound Transit's regional commitments
- Maintain a healthy environment

What we heard in February

Overall General Comment Themes

- Build lot/garage close to station
- Install a pedestrian overpass
- Increase local transit connections

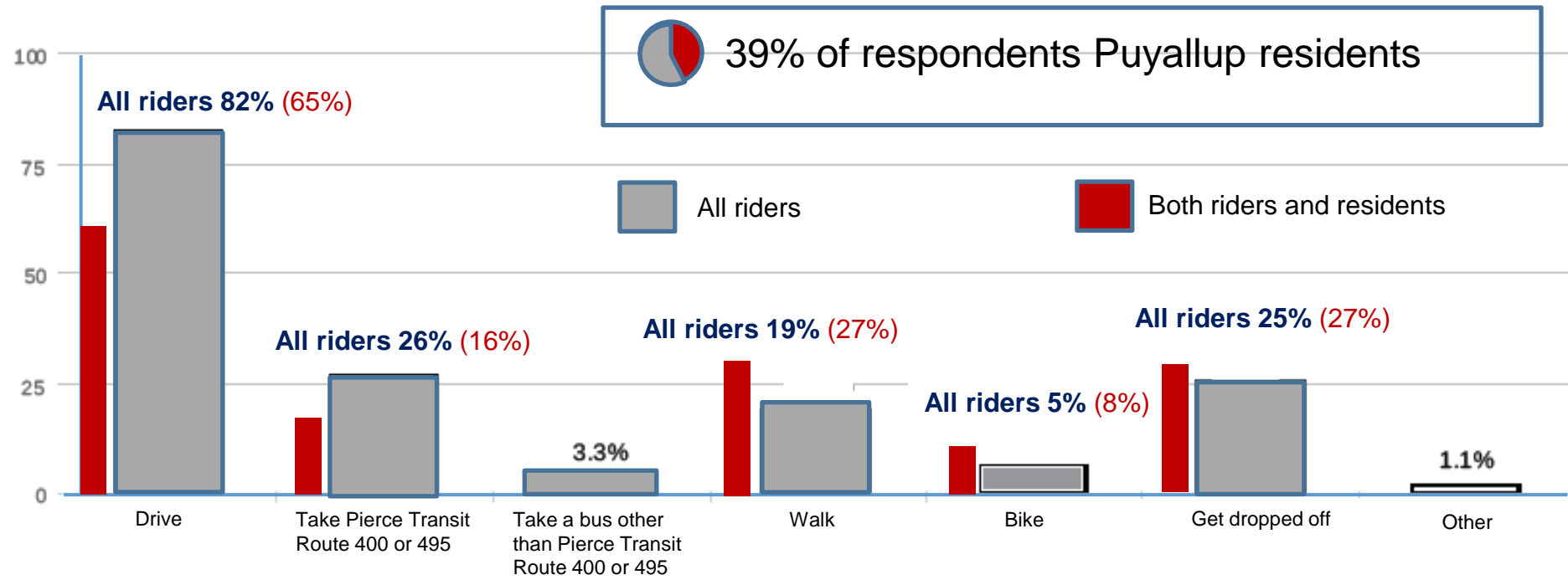
Parking option preferences:

- Strongest interest in garage at the Sounder Station
- Some interest in Eagles and Cornforth/Campbell
- Little interest in more parking at the Red Lot and Gold Lot
- Least interest in parking at Shaw Road site
- Questions regarding co-development opportunity at Cornforth/Campbell



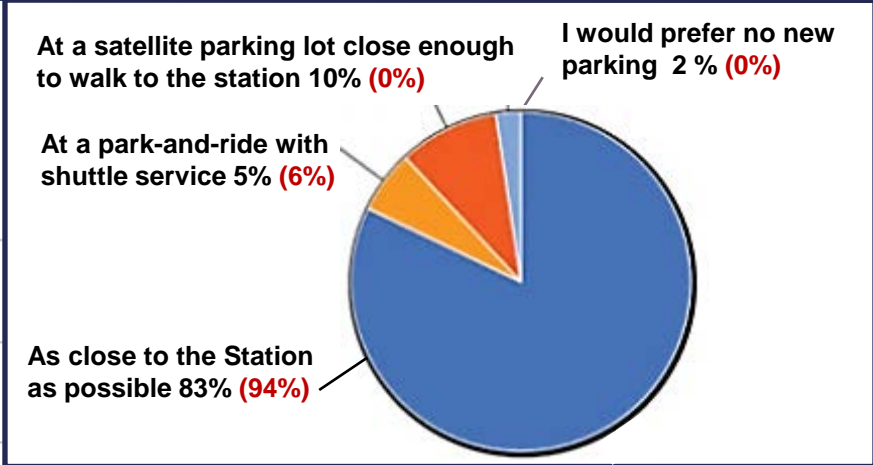
Review of Questionnaire: Puyallup Resident travel choices

In the last 30 days, what transportation modes have you used to get from home to Puyallup Station (check all that apply)?

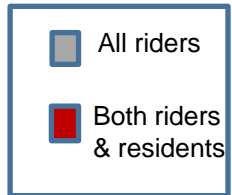
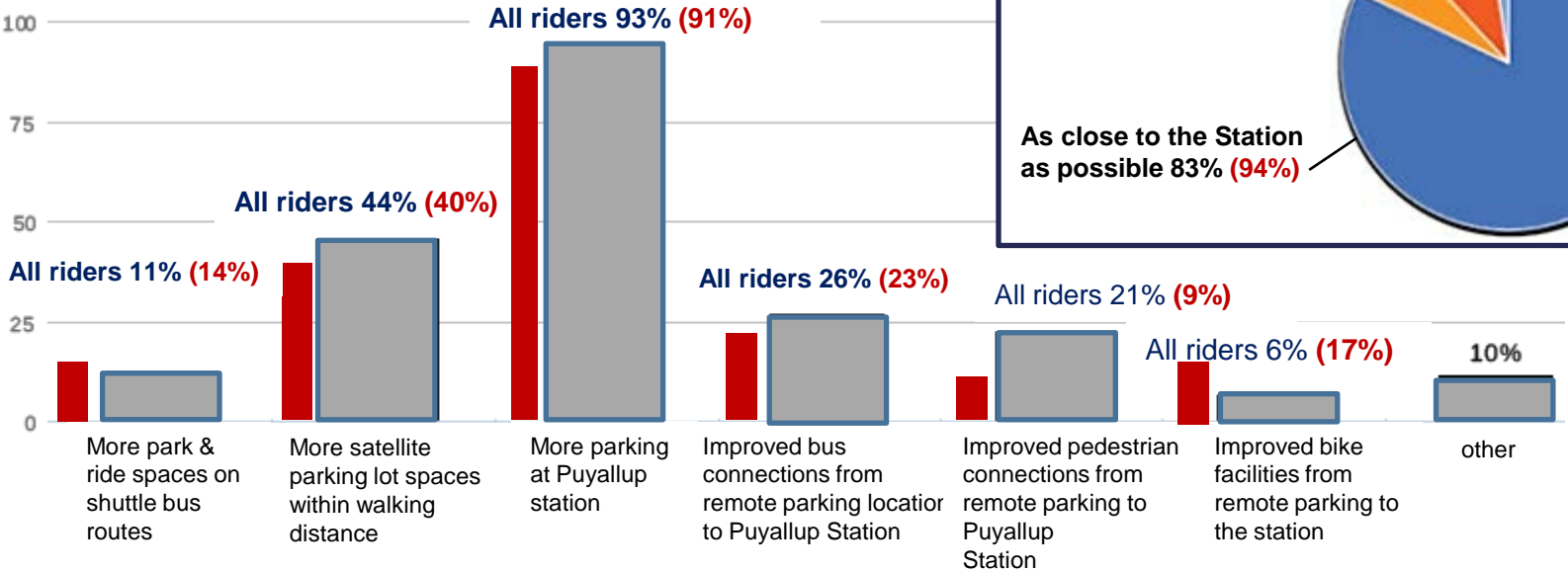


Questionnaire Results

If parking could be increased by 200 – 500 spaces, would you prefer those spots to be:



Are there parking improvements that would help you get to Puyallup Station (check all that apply)?



What's in a package?



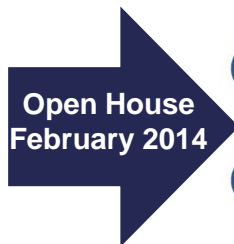
Overview of improvement packages:

- Six different access improvement packages – differentiated by parking type and location(s)
- Every package includes pedestrian, bike and traffic/bus management investments

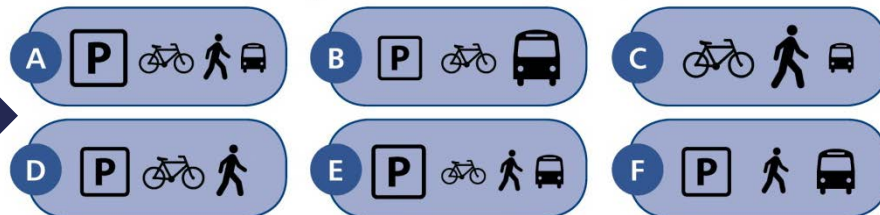
Moving towards a preferred package



Identify improvement options



Develop and evaluate packages of improvement options



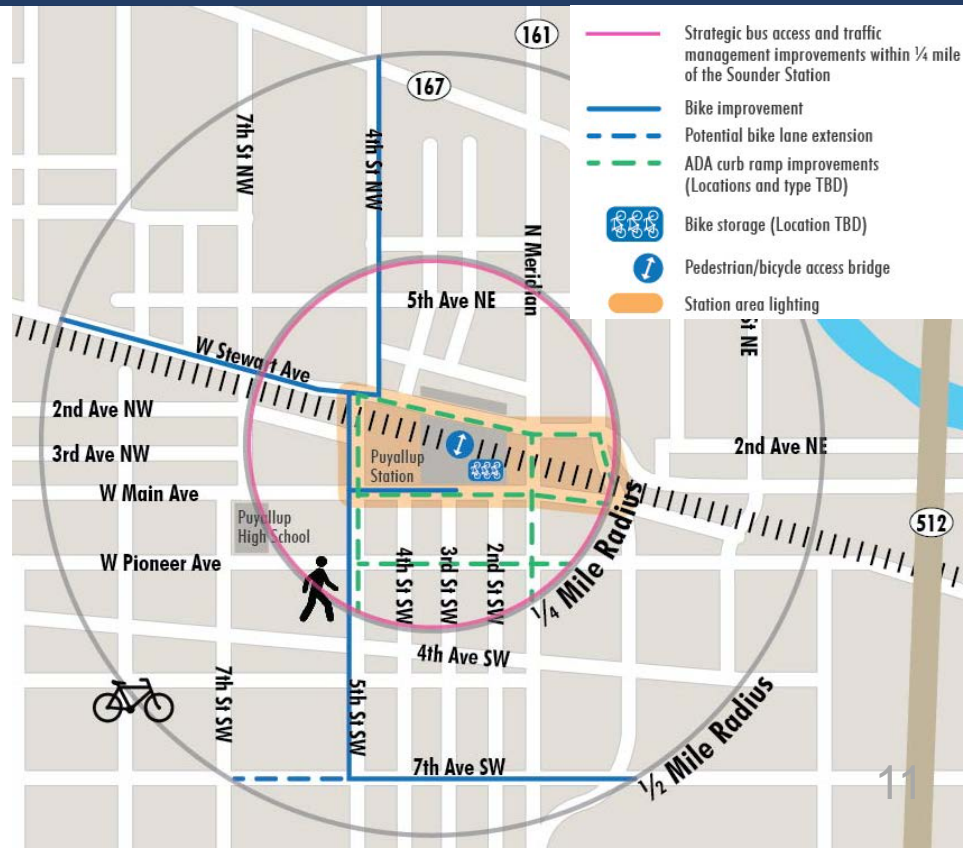
Refine package of improvement options



Sound Transit Board identifies preferred alternative
Summer 2014

Potential improvements included in every package

- Pedestrian/bike bridge over RR at station
- Station area transit signal priority and signal improvements
- Station area pedestrian related intersection, sidewalk and lighting improvements
- Bike route improvements: West Stewart, West Main, 7th Ave SW, 5th Street SW/4th Street NW
- Added bike storage at station
- Total investments: \$11 M



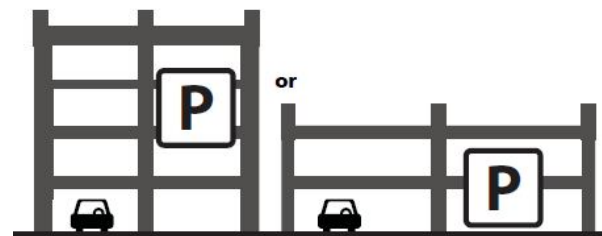
Access improvements: Parking options

Potential for up a total of up to 600 additional parking spaces, which could include surface lots, a small or large parking garage or a combination



Surface lot

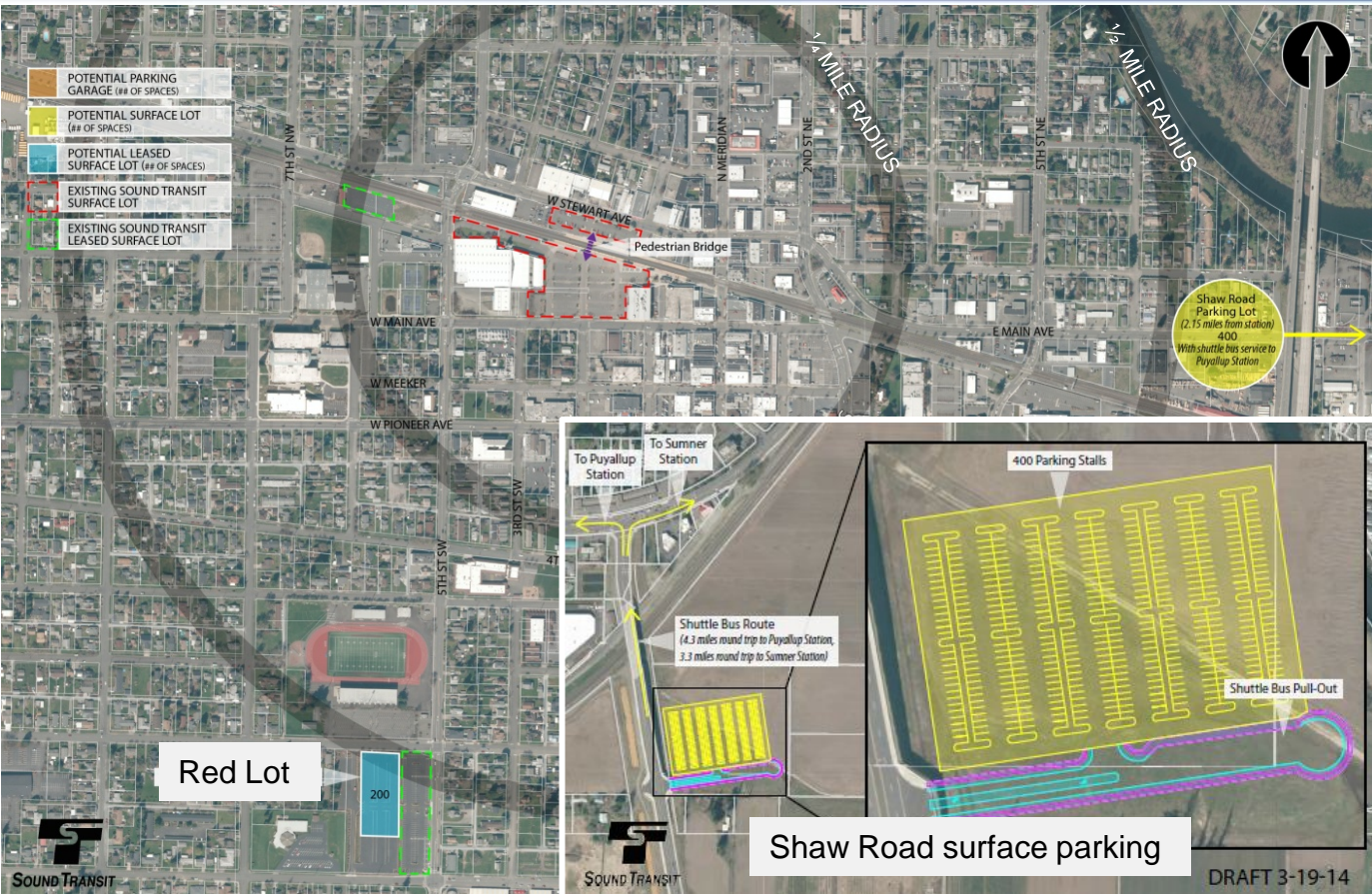
- One or more surface lots
- Lease and/or purchase
- \$6,500 a space



Parking garage

- Minimum size of 120 feet by 220 feet
- Up to 4½ stories (parking on the roof of a 4 story building)
- \$30,000 a space

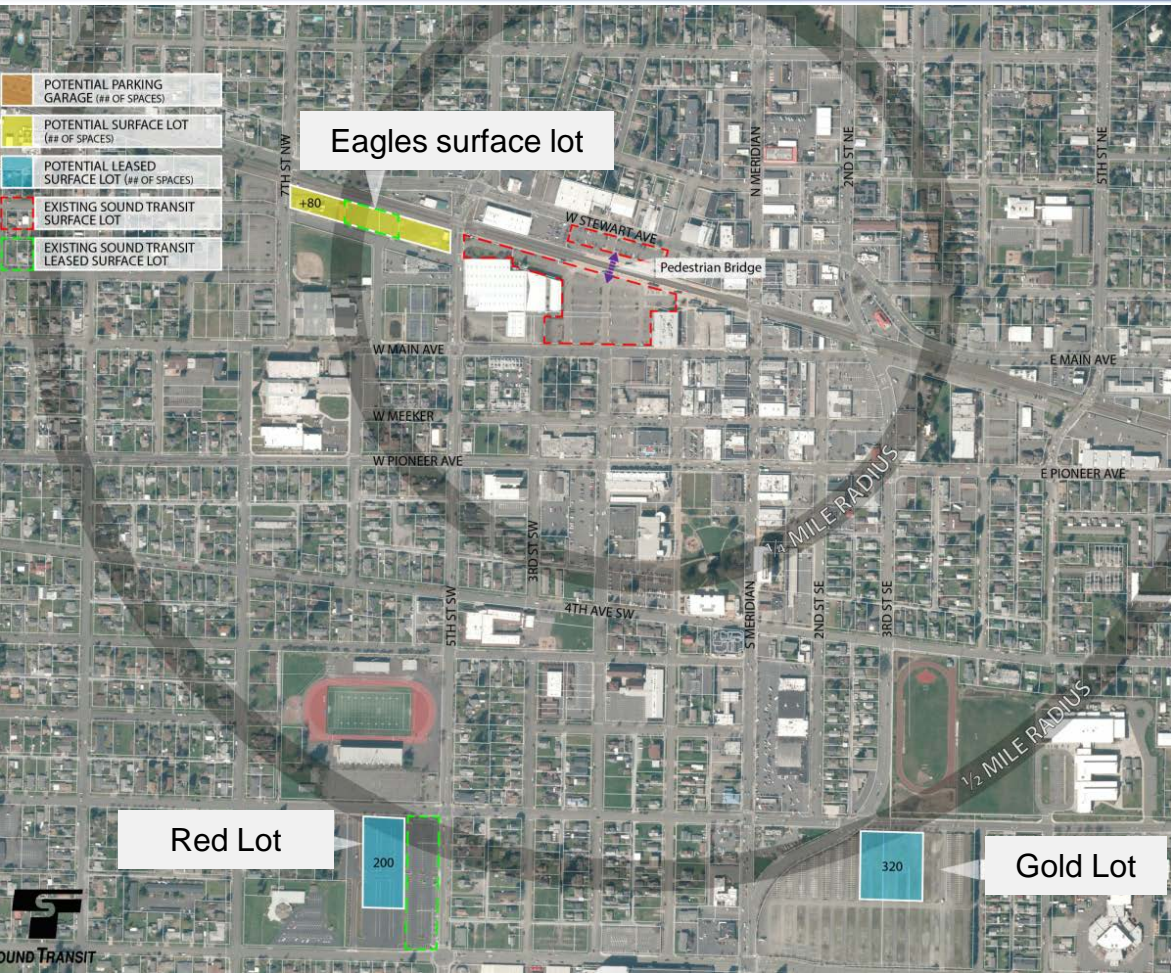
Package A



Parking related improvements

- Shaw Road surface parking: 400 spaces
- Red Lot lease expansion: Additional 200 spaces (no additional bus service)
- New access street to Shaw Road lot
- Bus shuttle from Shaw Road lot (unfunded and service provider not identified)

Package B



Parking related improvements

- Gold Lot lease: 320 spaces
- Red Lot lease expansion: Additional 200 spaces (no additional bus service)
- Eagles surface lot – net 80 spaces
- Pedestrian crossing improvements at 5th St. SW
- Bus shuttle from Gold Lot (service provider not identified)

Package C



Parking related improvements

- Eagles Garage (3 ½ stories): 600 spaces
- Pedestrian bridge across 5th St. SW

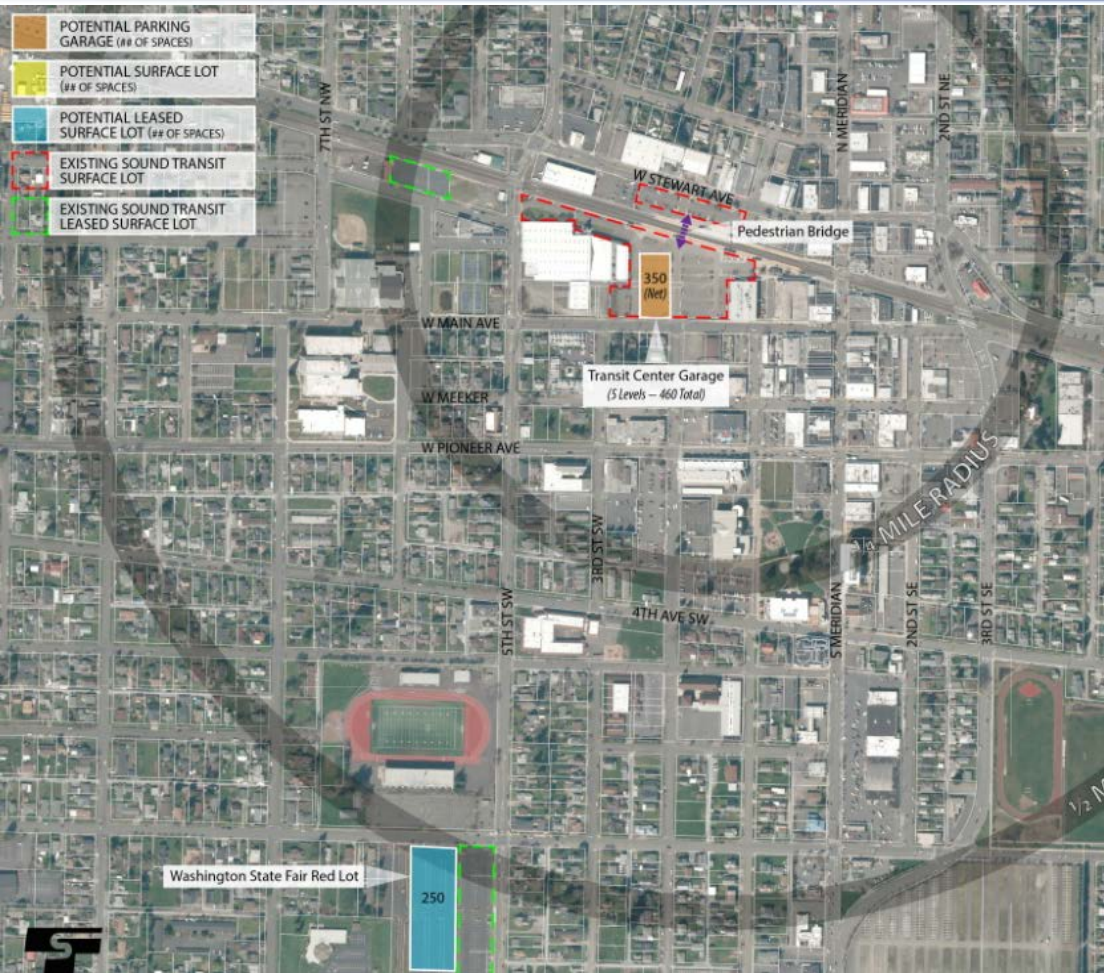
Package D



Parking related improvements

- Transit Center Garage
(4 ½ stories): net 600 spaces, total 750 spaces

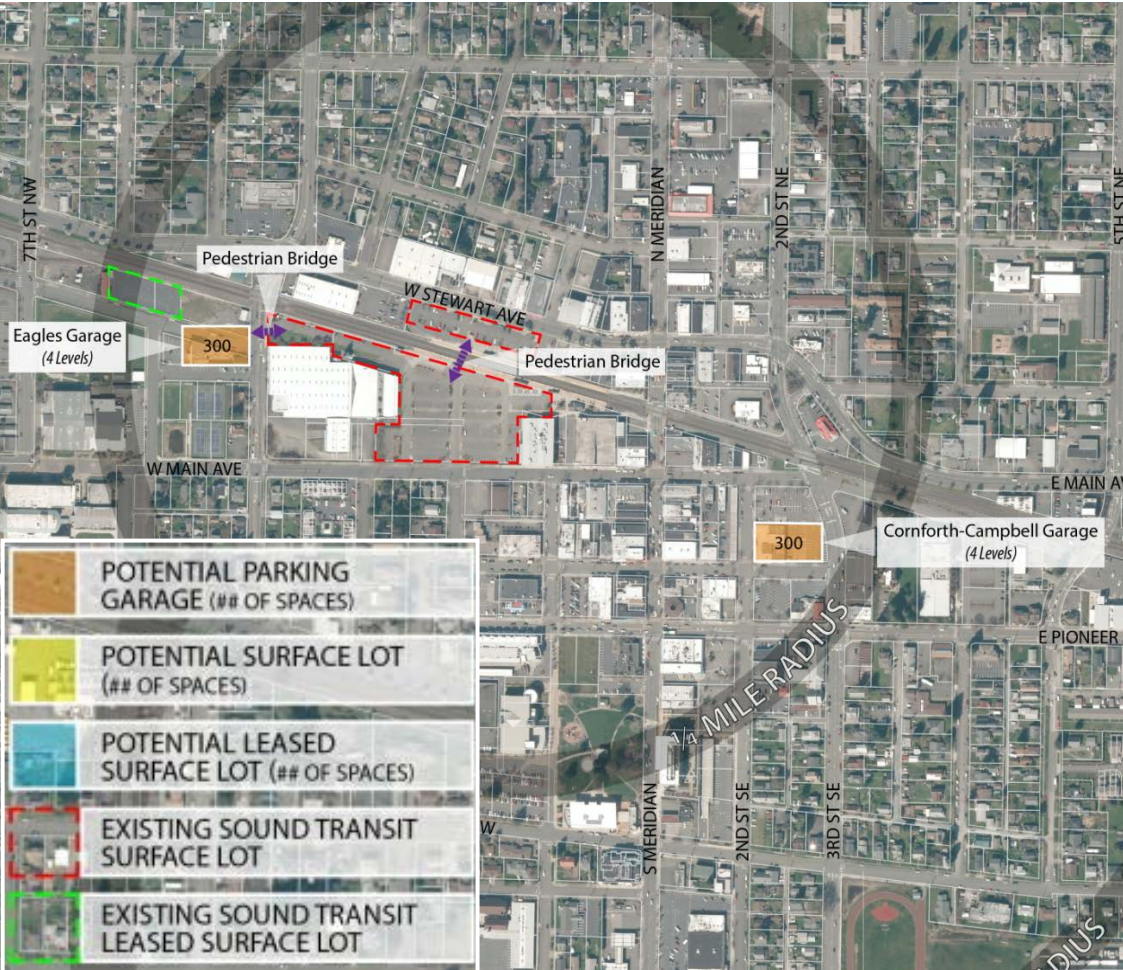
Package E



Parking related improvements

- Transit Center Garage (4 ½ stories): net 350 spaces, total 460 spaces
- Red Lot lease expansion: Additional 250 spaces (no additional bus service)

Package F







































Parking related improvements

- Cornforth-Campbell Garage (3 ½ stories): 300 spaces
- Eagles Garage (3 ½ stories): 300 spaces
- Pedestrian bridge across 5th St. SW

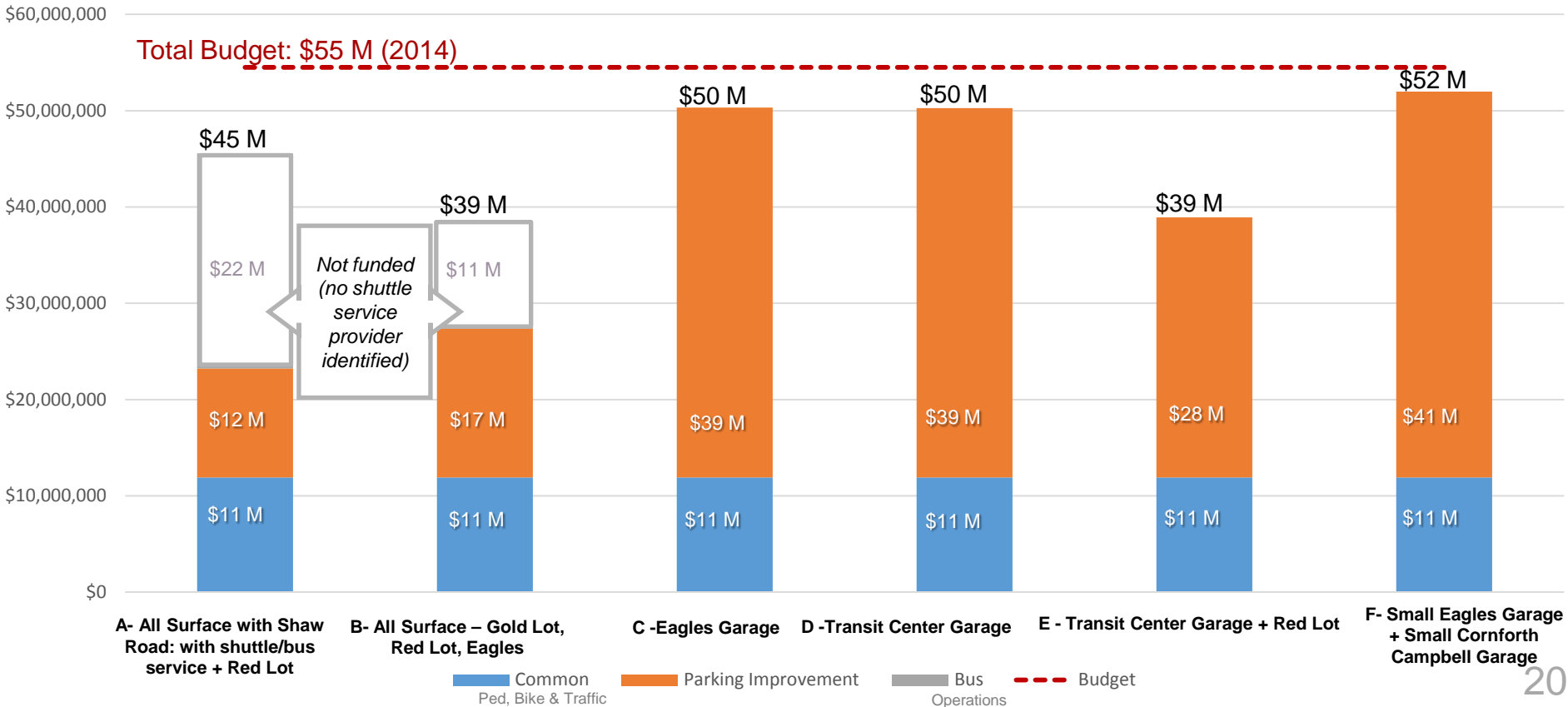


Evaluation Results

Goal	Evaluation Criteria	A All Surface with Shaw Road B, WITH Bus Service + Red Lot	B All Surface - Gold Lot, Red Lot, Eagles (no added bus service)	C Eagles Garage (no surface parking)	D Transit Center Garage (no surface parking)	E Transit Center Garage + Red Lot	F Small Eagles Garage + Small Cornforth Campbell Garage
Provide improved access to Sounder riders	 Travel time and reliability						
	 Comfort, security and convenience						
Benefit the local community*	 Neighborhood compatibility: • Traffic • Neighborhood parking • Community character						
	 Supports City's plans for the station area						
Maintain a healthy environment	 Property, historic, parks, and natural resources						
Cost	 Cost (2014 dollars)	\$ 45 M	\$ 39 M	\$ 50 M	\$ 50 M	\$ 39 M	\$ 52 M

*Results based on impacts/benefits to the station area

Project Cost



Sound Transit is exploring potential partnership opportunities with WSDOT and local jurisdictions to make improvements to the bridge over SR 410

These improvements would substantially improve access to the Sumner Sounder station for both Sumner and Puyallup residents.



Potential Improvement to bridge over SR 410

Next steps

- Open House May 14
(Liberty Theater)
- Council presentation on open house results in June
- ST Board Action July 2014
- Begin Phase 2 late summer 2014





 **SOUNDTRANSIT**
RIDE THE WAVE

What could a garage look like?

