



# SOUNDTRANSIT Ridership Summary

## March 2013

Boardings Mode	Monthly Total Boardings			Annual YTD Boardings			Average Weekday Boardings			Average Saturday Boardings			Average Sunday Boardings		
	Mar. 2013	Mar. 2012	% Change	2013	2012	% Change	Mar. 2013	Mar. 2012	% Change	Mar. 2013	Mar. 2012	% Change	Mar. 2013	Mar. 2012	% Change
ST Express regional bus	1,341,992	1,287,764	+ 4.2%	3,918,971	3,615,741	+ 8.4%	55,671	51,903	+ 7.3%	20,923	19,528	+ 7.1%	13,657	12,067	+ 13.2%
Souder commuter rail	238,832	225,436	+ 5.9%	710,057	636,412	+ 11.6%	11,373	10,247	+ 11.0%	0*	0*	+ N/A	0*	0*	+ N/A
Tacoma Link light rail	87,747	89,819	- 2.3%	259,303	259,521	- 0.1%	3,512	3,462	+ 1.5%	2,107	2,147	- 1.8%	691	733	- 5.6%
Central Link light rail	733,058	654,013	+ 12.1%	2,040,578	1,822,619	+ 12.0%	26,485	23,379	+ 13.3%	20,771	18,375	+ 13.0%	14,603	11,948	+ 22.2%
Paratransit	5,311	5,458	- 2.7%	15,432	16,140	- 4.4%	171	176	- 2.7%	171	176	- 2.7%	171	176	- 2.7%
<b>System Total</b>	<b>2,406,939</b>	<b>2,262,490</b>	<b>+ 6.4%</b>	<b>6,944,341</b>	<b>6,350,434</b>	<b>+ 9.4%</b>	<b>97,212</b>	<b>89,167</b>	<b>+ 9.0%</b>	<b>43,973</b>	<b>40,226</b>	<b>+ 9.3%</b>	<b>29,123</b>	<b>24,923</b>	<b>+ 16.9%</b>

ST Express and System Total ridership includes downtown Seattle only ridership (formerly Ride Free Area) as of October 2012.

Paratransit daily boardings are assumed equal between weekdays, Saturdays and Sundays.

\* Souder event service

### Ridership Analysis

#### **March 2013: 21 weekdays, 5 Saturdays, 5 Sundays for ST Express, Central Link, Souder and Tacoma Link**

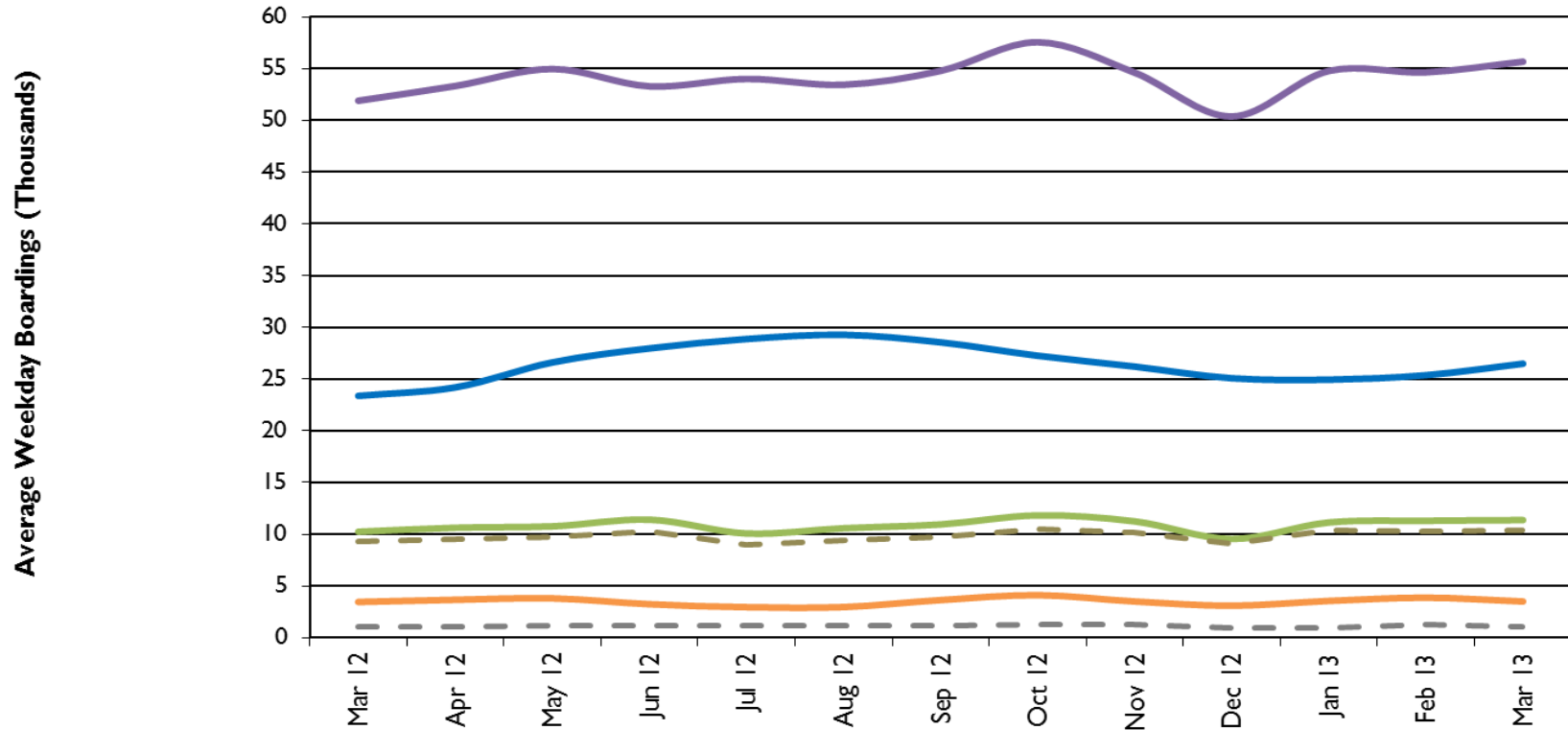
All Sound Transit modes experienced ridership growth during March 2013 except for Tacoma Link and Paratransit. Downtown Seattle local boardings continue to be included in the ST Express totals since the Ride Free Area was discontinued in October 2012. Total Souder commuter train ridership was up 5.9%, with average weekday boardings increasing by 11%, even with significant service interruptions on both the North and South lines. Average weekday Souder boardings decreased by 3% on the North Line and increased by 13% on the South Line. The North Line experienced four major service interruptions in March, and the South Line incurred three service interruptions due to mechanical problems. On Central Link, total boardings increased by an impressive 12%, the third straight month with double digit increases from last year's numbers. Link average Sunday boardings increased by an equally impressive 22.2%. Total ridership on Tacoma Link is down slightly from 2012, mostly due to the fact that there was one less weekday this year than in March of last year.

# SOUNDTRANSIT Ridership Summary

March 2013

## Trends

### Sound Transit Boardings by Mode



	Mar-12	Apr-12	May-12	Jun-12	Jul-12	Aug-12	Sep-12	Oct-12	Nov-12	Dec-12	Jan-13	Feb-13	Mar-13
ST Express regional bus	51,903	53,321	54,966	53,289	54,005	53,442	54,778	57,555	54,609	50,375	54,772	54,640	55,671
Central Link light rail	23,379	24,200	26,615	27,971	28,870	29,275	28,549	27,254	26,205	25,084	24,938	25,370	26,485
Sounder commuter rail	10,247	10,632	10,770	11,417	10,079	10,588	10,952	11,828	11,250	9,552	11,142	11,305	11,373
Sounder South Line	9,249	9,555	9,703	10,225	8,937	9,415	9,738	10,521	10,164	9,034	10,415	10,272	10,406
Sounder North Line	1,042	1,075	1,115	1,188	1,139	1,170	1,212	1,304	1,264	940	997	1,287	1,013
Tacoma Link light rail	3,462	3,671	3,807	3,247	2,957	2,968	3,645	4,119	3,507	3,096	3,565	3,870	3,512