



# SOUNDTRANSIT Ridership Summary

## April 2013

Boardings Mode	Monthly Total Boardings			Annual YTD Boardings			Average Weekday Boardings			Average Saturday Boardings			Average Sunday Boardings		
	Apr. 2013	Apr. 2012	% Change	2013	2012	% Change	Apr. 2013	Apr. 2012	% Change	Apr. 2013	Apr. 2012	% Change	Apr. 2013	Apr. 2012	% Change
ST Express regional bus	1,402,212	1,271,077	+ 10.3%	5,321,183	4,886,818	+ 8.9%	57,591	51,903	+ 11.0%	20,213	19,528	+ 3.5%	13,589	12,067	+ 12.6%
Souder commuter rail	252,409	229,540	+ 10.0%	962,466	865,952	+ 11.1%	11,267	10,632	+ 6.0%	1,801*	3,092*	- 41.8%	1,368*	1,584*	- 13.6%
Tacoma Link light rail	90,464	88,509	+ 2.2%	349,767	348,030	+ 0.5%	3,656	3,671	- 0.4%	1,870	2,025	- 7.7%	641	663	- 3.4%
Central Link light rail	731,045	663,440	+ 10.2%	2,771,623	2,486,059	+ 11.5%	27,019	24,311	+ 11.1%	19,515	20,691	- 5.7%	14,643	14,029	+ 4.4%
Paratransit	5,476	5,275	+ 3.8%	20,908	21,415	- 2.4%	183	176	+ 3.8%	183	176	+ 3.8%	183	176	+ 3.8%
<b>System Total</b>	<b>2,481,606</b>	<b>2,257,841</b>	<b>+ 9.9%</b>	<b>9,425,947</b>	<b>8,608,275</b>	<b>+ 9.5%</b>	<b>99,715</b>	<b>92,112</b>	<b>+ 8.3%</b>	<b>42,230</b>	<b>45,503</b>	<b>- 7.2%</b>	<b>29,739</b>	<b>28,297</b>	<b>+ 5.1%</b>

ST Express and System Total ridership includes downtown Seattle only ridership (formerly Ride Free Area) as of October 2012.

Paratransit daily boardings are assumed equal between weekdays, Saturdays and Sundays.

\* Souder event service

### Ridership Analysis

#### **April 2013: 22 weekdays, 4 Saturdays, 4 Sundays for ST Express, Central Link, Souder and Tacoma Link**

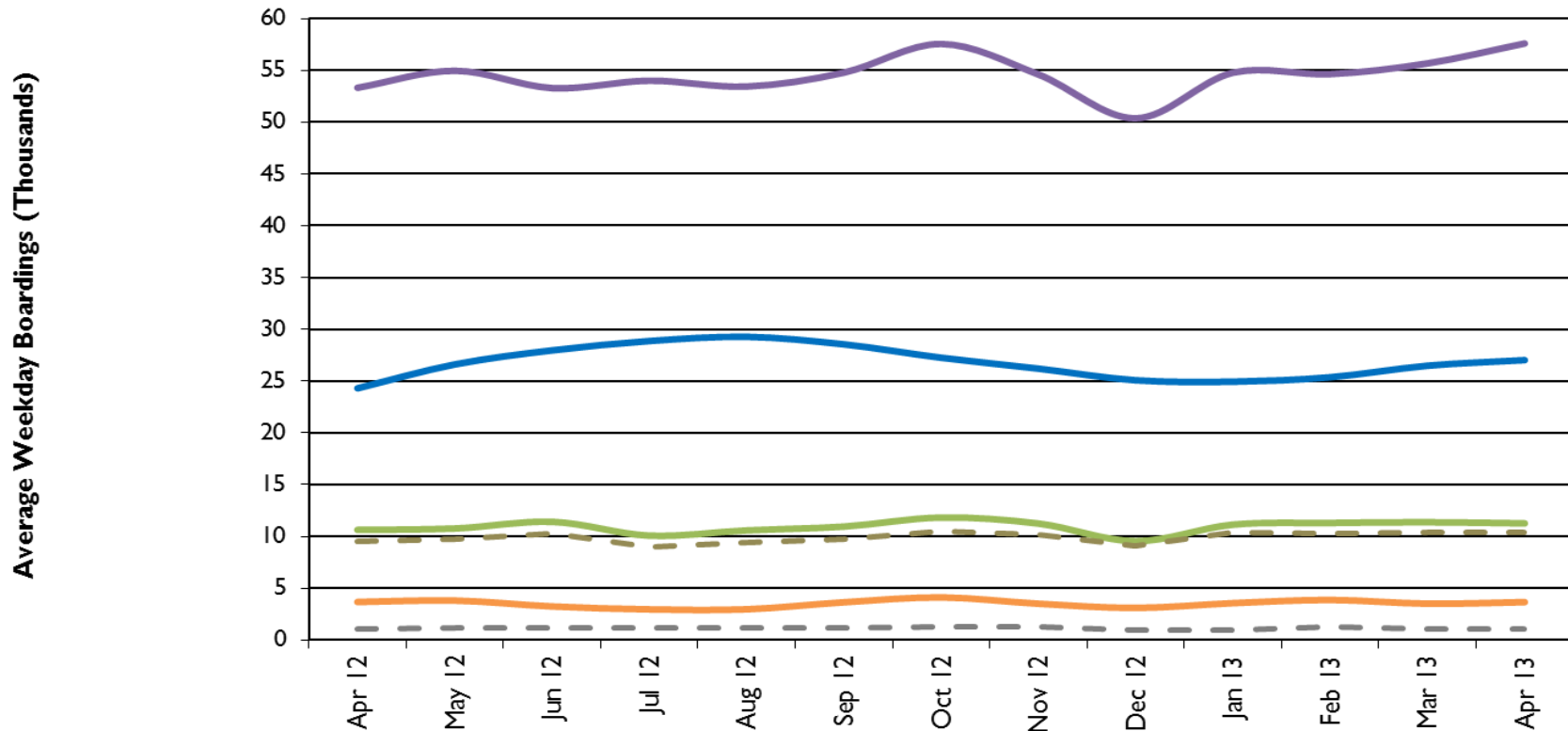
All Sound Transit modes experienced ridership growth on weekdays during April 2013. Downtown Seattle local boardings continue to be included in the ST Express totals since the Ride Free Area was discontinued in October 2012. Total Souder commuter train ridership was up 10%, even with significant service interruptions due to mudslides on the North line. Average weekday Souder boardings decreased by 7% on the North Line and increased by 9% on the South Line. The North Line experienced four days with service interruptions in April, and the South Line incurred one service interruption due to mechanical problems. On Central Link, total boardings increased by an impressive 10%, the fourth straight month with double digit increases from last year's numbers.

# SOUNDTRANSIT Ridership Summary

April 2013

## Trends

### Sound Transit Boardings by Mode



	Apr-12	May-12	Jun-12	Jul-12	Aug-12	Sep-12	Oct-12	Nov-12	Dec-12	Jan-13	Feb-13	Mar-13	Apr-13
ST Express regional bus	53,321	54,966	53,289	54,005	53,442	54,778	57,555	54,609	50,375	54,772	54,640	55,671	57,591
Central Link light rail	24,311	26,615	27,971	28,870	29,275	28,549	27,254	26,205	25,084	24,938	25,370	26,485	27,027
Sounder commuter rail	10,632	10,770	11,417	10,079	10,588	10,952	11,828	11,250	9,552	11,142	11,305	11,373	11,267
Sounder South Line	9,555	9,703	10,225	8,937	9,415	9,738	10,521	10,164	9,034	10,415	10,272	10,406	10,397
Sounder North Line	1,075	1,115	1,188	1,139	1,170	1,212	1,304	1,264	940	997	1,287	1,013	1,004
Tacoma Link light rail	3,671	3,807	3,247	2,957	2,968	3,645	4,119	3,507	3,096	3,565	3,870	3,512	3,656