



# Ridership Summary

## July 2013

Boardings Mode	Monthly Total Boardings			Annual YTD Boardings			Average Weekday Boardings			Average Saturday Boardings			Average Sunday Boardings		
	July 2013	July 2012	% Change	2013	2012	% Change	July 2013	July 2012	% Change	July 2013	July 2012	% Change	July 2013	July 2012	% Change
ST Express regional bus	1,473,371	1,298,809	+ 13.4%	9,602,423	8,842,150	+ 8.6%	58,988	54,005	+ 9.2%	23,809	21,278	+ 11.9%	16,080	13,987	+ 15.0%
Sounder commuter rail	266,148	217,290	+ 22.5%	1,737,071	1,571,167	+ 10.6%	11,786	10,079	+ 16.9%	2,211*	0*	+ N/A	2,320*	1,878*	+ 23.5%
Tacoma Link light rail	75,010	73,259	+ 2.4%	590,576	598,516	- 1.3%	2,921	2,957	- 1.2%	1,919	1,767	+ 8.6%	614	684	- 10.3%
Central Link light rail	953,634	836,940	+ 13.9%	5,407,020	4,853,339	+ 11.4%	31,947	28,870	+ 10.7%	32,853	26,868	+ 22.3%	23,879	20,534	+ 16.3%
Paratransit	5,272	5,188	+ 1.6%	36,816	37,350	- 1.4%	170	167	+ 1.6%	170	167	+ 1.6%	170	167	+ 1.6%
<b>System Total</b>	<b>2,773,435</b>	<b>2,431,486</b>	<b>+ 14.1%</b>	<b>17,373,905</b>	<b>15,902,522</b>	<b>+ 9.3%</b>	<b>105,812</b>	<b>96,077</b>	<b>+ 10.1%</b>	<b>59,303</b>	<b>50,079</b>	<b>+ 18.4%</b>	<b>41,670</b>	<b>36,311</b>	<b>+ 14.8%</b>

ST Express and System Total ridership includes downtown Seattle only ridership (formerly Ride Free Area) as of October 2012.

Paratransit daily boardings are assumed equal between weekdays, Saturdays and Sundays.

\* Sounder event service

### Ridership Analysis

#### July 2013: 22 weekdays, 4 Saturdays, 5 Sundays for ST Express, Central Link, Sounder and Tacoma Link

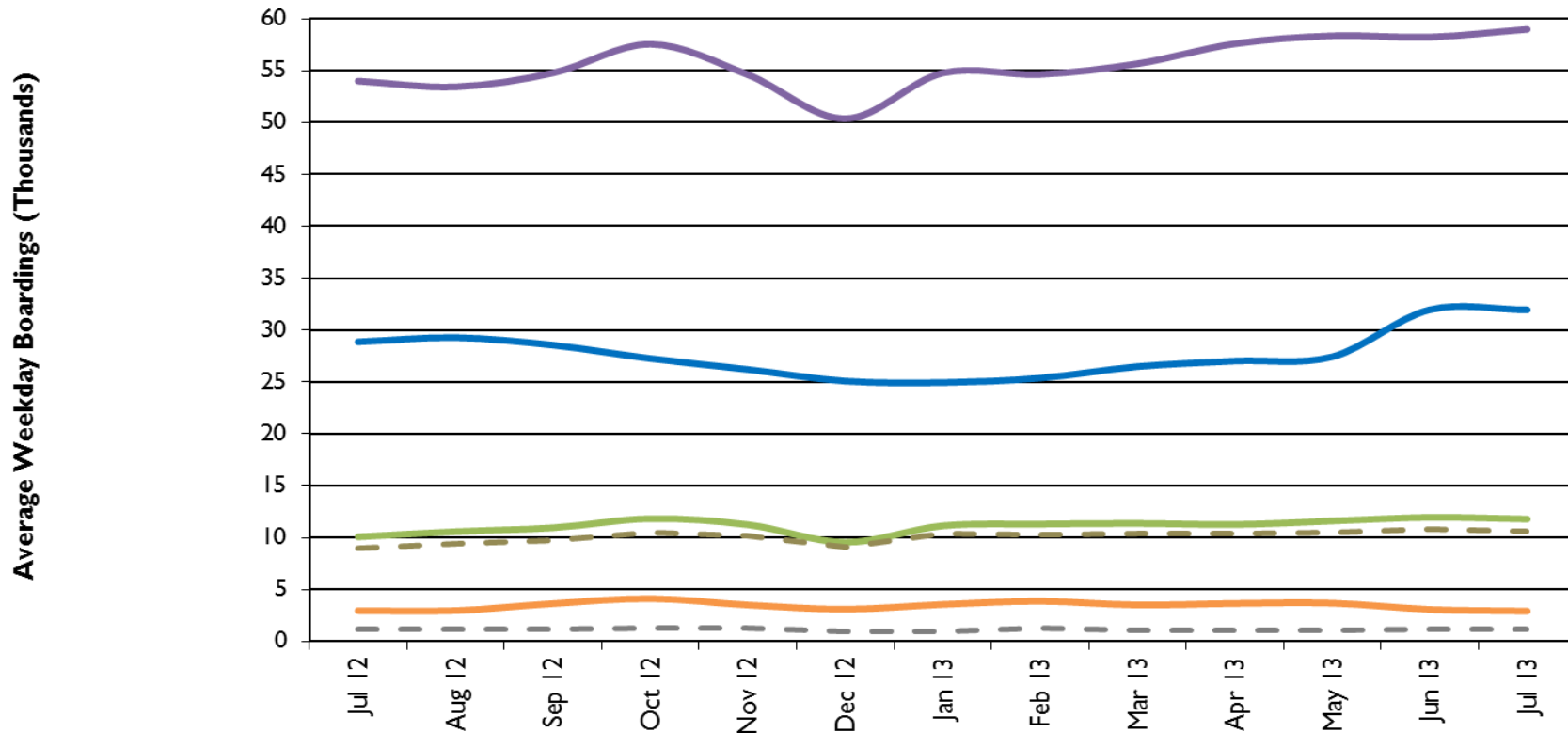
All Sound Transit modes experienced ridership growth during July 2013. Downtown Seattle local boardings continue to be included in the ST Express totals since the Ride Free Area was discontinued in October 2012. On ST Express, cross lake routes continue to show impressive ridership increases over 2012 with 18%, 19%, and 15% more weekday ridership on routes 545, 550 and 554 respectively in July. Route 560 showed an increase of 20%, reversing a long decline in ridership. Total Sounder commuter train ridership was over 22% over July 2012, the largest year over year increase for Sounder this year. Average weekday Sounder boardings increased by 18% on the south line and by 7% on the north line. On Central Link, total boardings increased by 14%. Central Link continues to post high weekend numbers. Average Saturday ridership was higher than the weekday ridership for the second straight month this summer. Tacoma Link ridership was mostly flat with a slight decrease in weekday ridership coupled with a slight increase in Saturday ridership.

# SOUNDTRANSIT Ridership Summary

July 2013

## Trends

### Sound Transit Boardings by Mode



	Jul-12	Aug-12	Sep-12	Oct-12	Nov-12	Dec-12	Jan-13	Feb-13	Mar-13	Apr-13	May-13	Jun-13	Jul-13
ST Express regional bus	54,005	53,442	54,778	57,555	54,609	50,375	54,772	54,640	55,671	57,591	58,361	58,239	58,987
Central Link light rail	28,870	29,275	28,549	27,254	26,205	25,084	24,938	25,370	26,485	27,019	27,428	31,953	31,947
Sounder commuter rail	10,079	10,588	10,952	11,828	11,250	9,552	11,142	11,305	11,373	11,267	11,603	11,953	11,786
Sounder South Line	8,937	9,415	9,738	10,521	10,164	9,034	10,415	10,272	10,406	10,397	10,538	10,772	10,568
Sounder North Line	1,139	1,170	1,212	1,304	1,264	940	997	1,287	1,013	1,004	1,061	1,177	1,215
Tacoma Link light rail	2,957	2,968	3,645	4,119	3,507	3,096	3,565	3,870	3,512	3,656	3,686	3,079	2,921