



SOUNDTRANSIT Ridership Summary

October 2012

Boardings Mode	Monthly Total Boardings			Annual YTD Boardings			Average Weekday Boardings			Average Saturday Boardings			Average Sunday Boardings		
	Oct. 2012	Oct. 2011	% Change	2012	2011	% Change	Oct. 2012	Oct. 2011	% Change	Oct. 2012	Oct. 2011	% Change	Oct. 2012	Oct. 2011	% Change
ST Express regional bus	1,470,586	1,198,721	+ 22.7%	12,935,971	11,406,780	+ 13.4%	57,555	49,690	+ 15.8%	21,296	18,900	+ 12.7%	15,408	12,202	+ 26.3%
Souder commuter rail	289,460	242,474	+ 19.4%	2,338,216	2,101,664	+ 11.3%	11,828	10,539	+ 12.2%	4,735*	0*	+ N/A	9,676*	10,574*	- 8.5%
Tacoma Link light rail	104,529	97,392	+ 7.3%	864,485	798,863	+ 8.2%	4,119	3,993	+ 3.2%	1,784	1,954	- 8.7%	661	753	- 12.2%
Central Link light rail	775,432	680,526	+ 13.9%	7,302,404	6,534,644	+ 11.7%	27,254	24,327	+ 12.0%	19,911	19,061	+ 4.5%	17,235	14,869	+ 15.9%
Paratransit	5,509	7,182	- 23.3%	53,172	73,224	- 27.4%	178	232	- 23.3%	178	232	- 23.3%	178	232	- 23.3%
System Total	2,645,516	2,226,295	+ 18.8%	23,494,248	20,915,175	+ 12.3%	100,935	88,782	+ 13.7%	45,103	40,146	+ 12.3%	35,901	32,286	+ 11.2%

ST Express and System Total ridership includes downtown Seattle only ridership (formerly Ride Free Area) as of October 2012.

Paratransit daily boardings are assumed equal between weekdays, Saturdays and Sundays.

* Souder event service

Ridership Analysis

October 2012: 23 weekdays, 4 Saturdays, 4 Sundays (2011: 21 weekdays, 5 Saturdays, 5 Sundays)

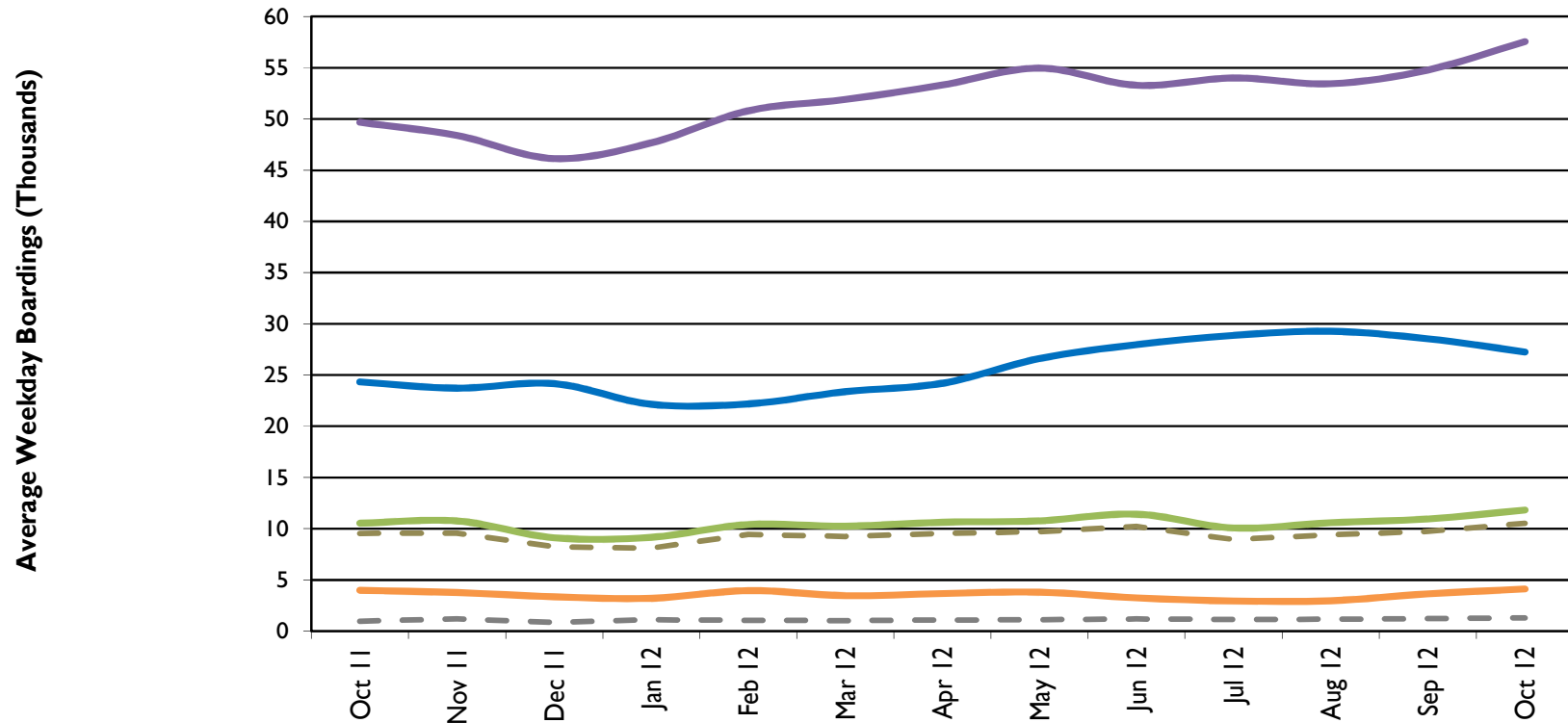
Sound Transit had a spectacular month of October, with total boardings up 18.8% over the same month in 2011. Weekday system ridership was over 100,000 boardings for the first time in Sound Transit's history. Weekend system ridership was also strong. ST Express was up 22.7% for the month, partly due to the elimination of the Ride Free Area, with all downtown Seattle only activity (formerly Ride Free Area) being included. Still, ST Express saw a record 57,555 average weekday boardings plus a new Sunday record. New ridership records were set on 14 routes, both weekdays and Sundays. Souder boardings were up 19.4% after the extension of the South Line to Lakewood Station on October 8. Average weekday boardings were up 10.1% on the South Line and up 33.3% on the North Line, with new weekday records set on both lines as well as Souder as a whole. Central Link ridership was up 13.9% overall, with a 12.0% increase in average weekday boardings. Tacoma Link total ridership was up 7.3% for the month compared with 2011, with a new weekday record of over 4,100 daily boardings and slightly lower weekend activity.

SOUNDTRANSIT Ridership Summary

October 2012

Trends

Sound Transit Boardings by Mode



	Oct-11	Nov-11	Dec-11	Jan-12	Feb-12	Mar-12	Apr-12	May-12	Jun-12	Jul-12	Aug-12	Sep-12	Oct-12
ST Express regional bus	49,677	48,389	46,131	47,671	50,805	51,903	53,321	54,966	53,289	54,005	53,442	54,778	57,555
Central Link light rail	24,327	23,720	24,161	22,152	22,186	23,379	24,200	26,615	27,971	28,870	29,275	28,549	27,254
Sounder commuter rail	10,536	10,759	9,118	9,166	10,404	10,247	10,632	10,770	11,417	10,079	10,588	10,952	11,828
Sounder South Line	9,558	9,573	8,244	8,104	9,432	9,249	9,555	9,703	10,225	8,937	9,415	9,738	10,521
Sounder North Line	978	1,186	874	1,111	1,068	1,042	1,075	1,115	1,188	1,139	1,170	1,212	1,304
Tacoma Link light rail	3,993	3,774	3,353	3,212	3,960	3,462	3,671	3,807	3,247	2,957	2,968	3,645	4,119