

# ***Safety Performance Review: 2019 summary and 2020 highlights***

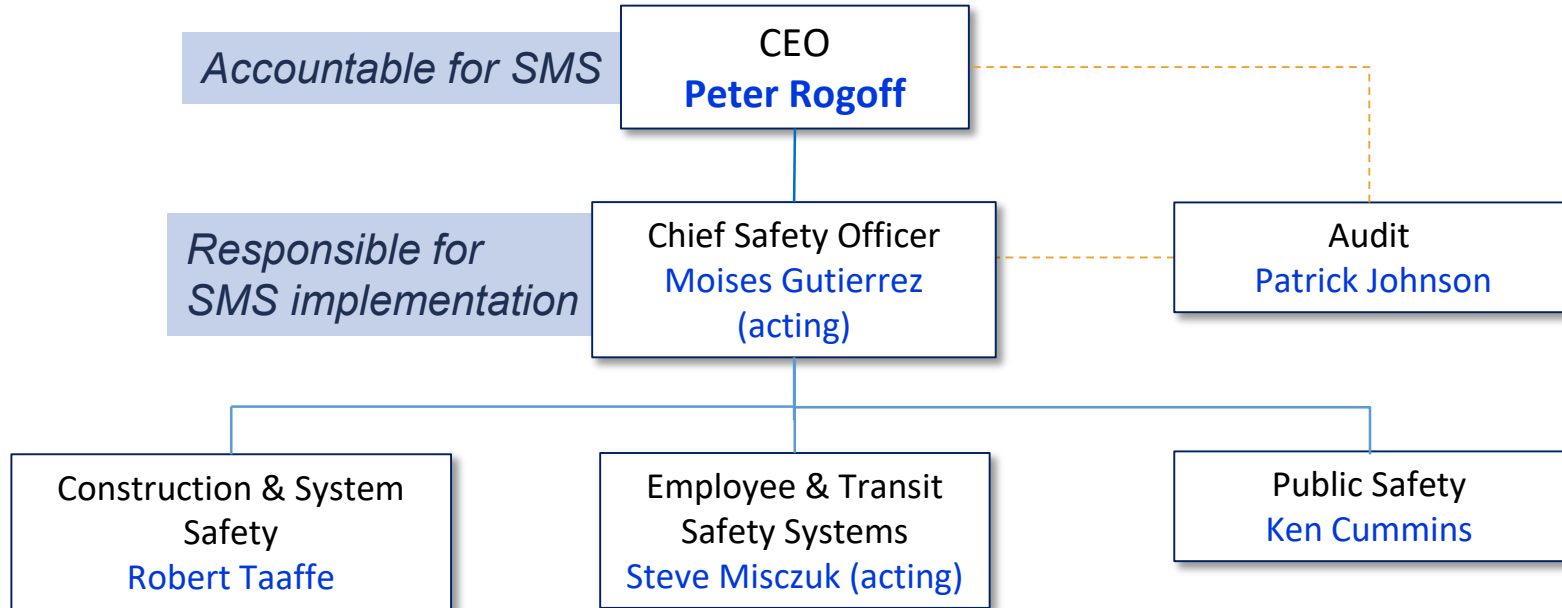
*Citizens Oversight Panel  
August 5, 2020*



# *Today's Presentation*

- 2019 safety data summary
- 2020 highlights

# Safety Department Structure & Divisions



# *2019 Safety Data Summary*



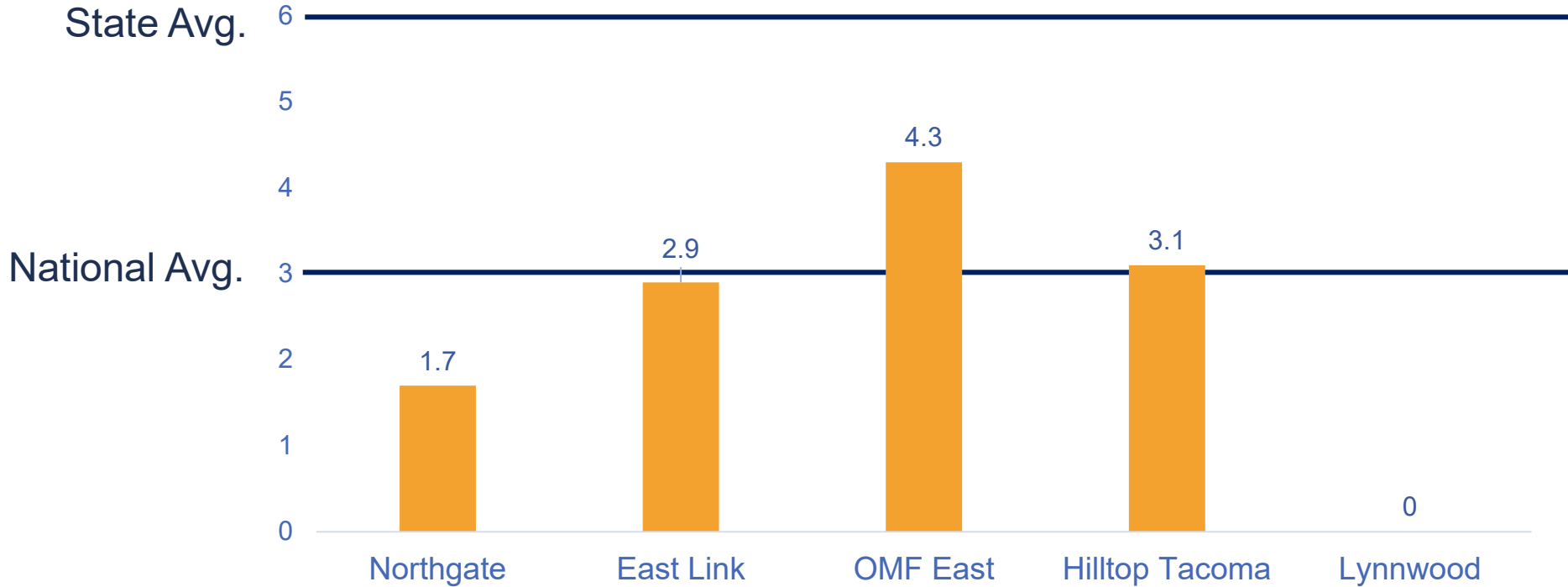
# *Construction & System Safety*

*Robert Taaffe, Director*

- Construction Safety:
  - Reviews construction sites (work plans, hazard analyses, weekly site surveys).
- System Safety:
  - Identifies, analyzes, and mitigates safety risk in the transit system.

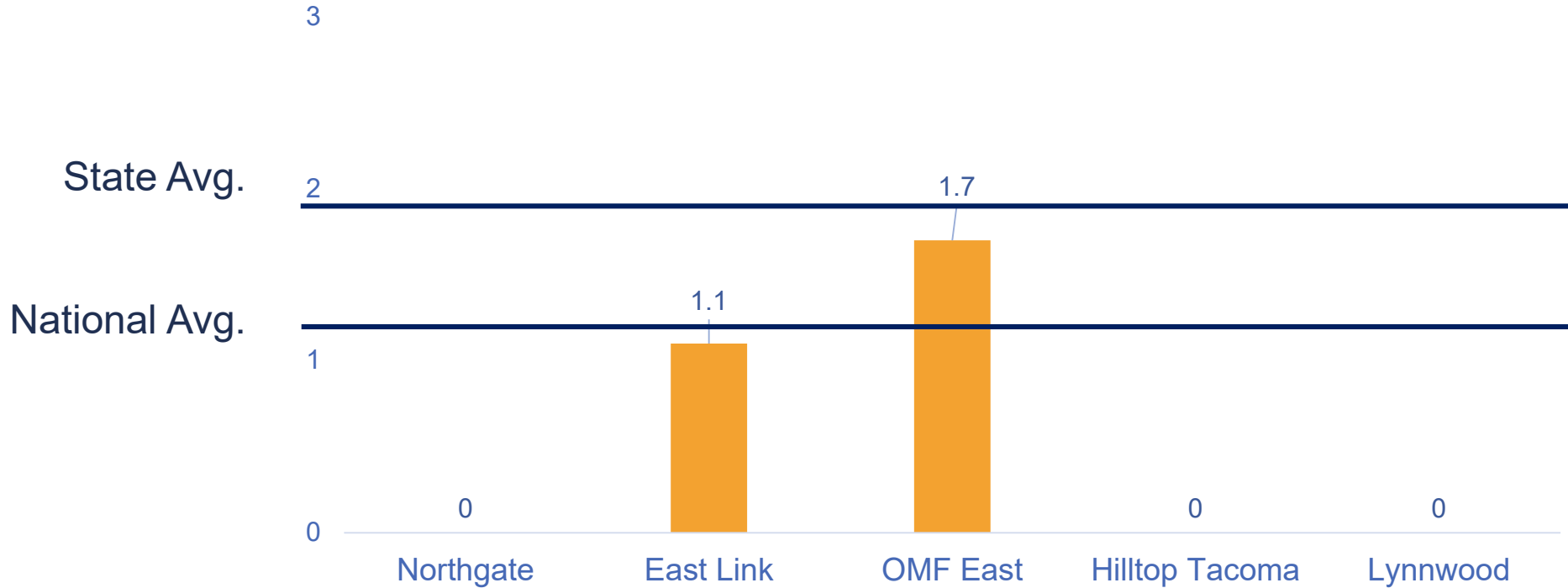
# Construction Safety

## 2019 Reportable Injury Rate



# Construction Safety

## 2019 Lost Time Rate



# *Employee & Transit Safety*

*Stephen Misczuk, Acting Director*

- **Transit Safety:** regulatory compliance, contract operator oversight, and transit safety performance.
- **Employee Safety:** safe working environment for employees.
- Agency Safety Management System.



# Transit Safety Data

## 2019 Collisions

### Vehicles

- **ST Express:** 19
- **Link:** 16
- **Tacoma Link:** 4
- **Sounder:** 3

### Pedestrians

- **ST Express:** 4
- **Sounder:** 4
- **Link:** 2
- **Tacoma Link:** 0



# Employee Health & Safety Data

	2018	2019
Total Employees	944	1,081
Injury/Illness Cases	5	3
<b>Recordable Incident Rate (RIR)</b>		
Sound Transit	0.64	0.37
WA State	2.9	2.9
National	4.5	4.5
<b>Days Away/Restriction/Transfer Rate (DART)</b>		
Sound Transit	0.25	0.37
WA State	1.9	1.9
National	3.0	3.0

# ***Audit Division***

***Patrick Johnson, Director***

- Evaluates internal and operating partners' safety compliance.
- Seeks continuous improvement through audits, assessments and performance reviews.

# Audit Division

## Completed Safety Audits (At-A-Glance)

	Safety Certification	Internal Safety
2018	4	3
2019	3	3

# 2020 Highlights



# COVID-19 Mitigation

- Passenger protections:
  - Routinely clean and disinfect fleet vehicles, with special attention to high-touch surfaces.
- Contractor protections:
  - Submittal and continued monitoring of COVID-19 Management Plans, including hygiene stations, PPE, and 6 feet separation.
- Employee protections:
  - Modified Work Procedures and Return to Worksite Plan for employees.

# *Point Defiance Bypass*

## *Sound Transit is the owner and host railroad*

- Safety will drive progress
- Employ a rigorous activation process
- Implement applicable recommendations from NTSB and other reports
- Enforce compliance from Amtrak and WSDOT prior to the resumption of service

*No date for resumption of passenger service has been identified at this time*

# *Broader Safety Function Changes*

- Department re-organization
- National search for new Chief Safety Officer
- Safety Management System implementation
- Refining the safety function with inter-departmental effort



*Thank you.*



 [soundtransit.org](https://www.soundtransit.org)

