

***Managing Construction  
Through COVID-19  
Pandemic  
Citizen Oversight Panel***

*July 22, 2020*

# *Why we are here*

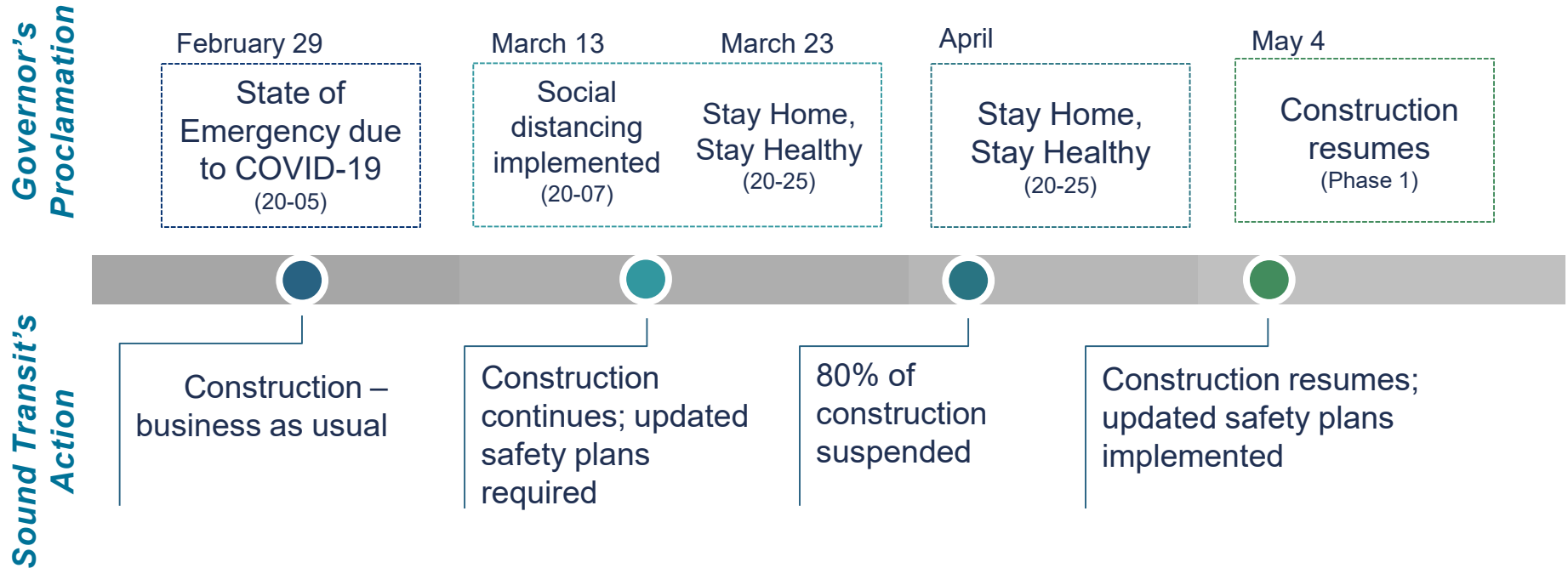
## *Construction Program Update*

- Highlight Sound Transit's construction response to the COVID-19 Pandemic

# *Today's Agenda*

- Timeline of Sound Transit's construction response to COVID-19 Pandemic
- Suspension and restart of work
- Construction safety and jobsite practices
- Relevant contract provisions

# Timeline of Sound Transit's Response to COVID-19



Note: Sound Transit construction exempted from Proclamations 20-25, provided safety guidelines can be implemented

# Work Suspension

## *Majority of Work Suspended, Essential Work Continues*

- Sound Transit suspended work of ~80% active construction
  - Notification letters issued to contractors prior to suspension, effective April 6 to May 4
- Essential work continued with ~20% of construction work
  - Resources were reallocated for monitoring of compliance with social distancing and adherence to updated plans

# *Criteria for On-going Work during Suspension*

- Work that can be safely performed, consistent with CDC, State and Local guidelines for health & safety and also meets one of the following criteria:
  - In progress and affects public safety
  - Would avoid a significant public impact when businesses and schools reopen
  - Required to avoid system-wide delay
  - Sustain operations
  - Keep job sites secure and prevent damage
  - Sustain environmental controls

# *Suspended Work Site Security*



Lynnwood Link – Securing site during work suspension



Northgate Link – U District Station secured site

# *Essential Work – Safety Training*



Hilltop Tacoma Link



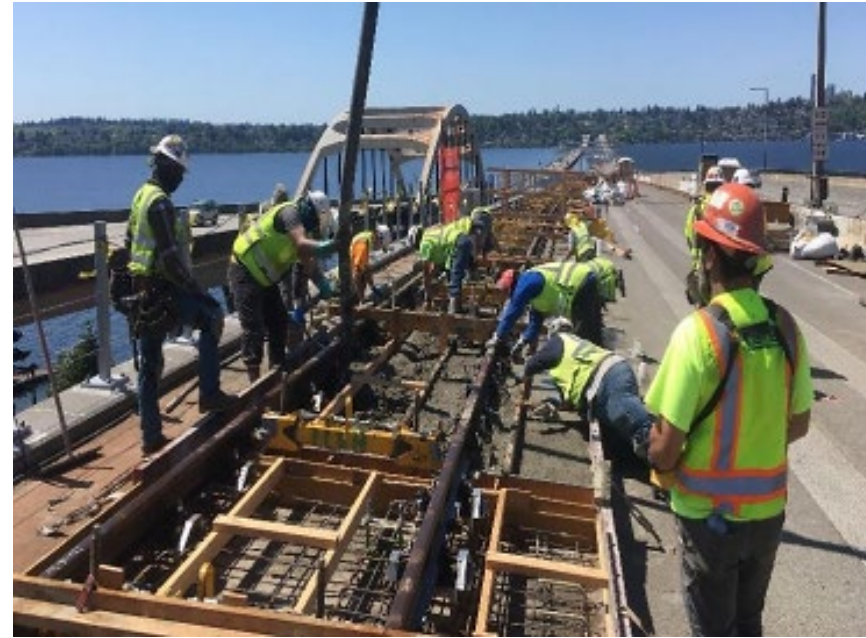
Operations & Maintenance Facility East



# Essential Work



Federal Way Link – Demolition Work



Trackwork on I-90

# Construction Restart

## Construction Restarts with Updated Safety Plans

- Construction work began ramping up on May 4
  - Collaborated with contractors and industry partners for updated safety plans with new jobsite safety practices
  - PPE enhanced for work performed in close quarters, intensive training of the work force, and enforcement of hazard mitigation deployed on all projects
  - Additional sanitation stations and protocols

# Jobsite Safety Practices



# Jobsite Safety Practices



# Construction Restart



Hilltop Tacoma Link – Track installation



Operations & Maintenance Facility East

# Construction Restart



May 12, 2020 at

Northgate Link/Systems – Pullout test set-up



Lynnwood Link – Drill shaft concrete placement

# *Construction Safety during COVID-19*

## *COVID-19 Prevention and Management*

- Required all Sound Transit Contractors to submit a C19 Management plan
- Reviewed and accepted plan on Agency criteria derived from DOSH, L&I, and CDC guidance and directives
- Verified contractor training and availability of required sanitizer/hygiene station, and PPE as prescribed for 6 foot rule and transmission prevention
- Consistent field surveys to assess adherence to submitted plan elements and requirements

# Contractual Provisions

## COVID-19 Pandemic Response

- Relevant contractual provisions
  - General Condition 10.02: “Unavoidable Delay” or *force majeure*
  - General Condition 12.01: Suspension of work
- Treated as two events in General Conditions
  - Contractors are required to segregate costs, delays and impacts arising from the Unavoidable Delay from those resulting from the suspension of work



# *Collaboration and Partnerships*

## *Collaborated and Partnered with*

- Governor's Council
- Federal Transit Administration
- Associated General Contractors
- Industry and labor partners
- Washington State Department of Transportation
- Port of Seattle
- Local jurisdictions
- King County
- LA Metro, MTA-New York, TriMet

# *Observations and Challenges*

- Initial steps toward “cultural change” are positive
- Contractors, workforce, and staff are embracing new safety requirements
- Rapid changes in requirements necessitates agility and quick response
- Some challenges with PPE
  - Face mask fogging
  - Health screening including temperature taking
  - Maintaining distancing during work planning activities, breaks, and lunch
- Mid-July: Increase in positive cases

*Thank you.*



 [soundtransit.org](https://www.soundtransit.org)

