

# *Citizens Oversight Panel*

## *Hilltop Tacoma Link Extension Update*

10/21/20

# Today's Presentation

- Cost and Schedule Update
- Financial Snapshot
- Progress since last update
- Overview of the work and construction progress
- Community Outreach
- Issues and Challenges

# Hilltop Tacoma Link Extension



## Cost & Schedule Snapshot

- **Baselined:** September 2017
- **Budget:** \$252.7 Million (YOE)
- **Schedule:** Revenue Service – May 2022
- **Status:** Construction is 64 % complete

# HTLE Financial Snapshot

Project Baseline Budget	\$252.7	
Committed	\$209.9	83%
Incurred	\$142.9	57%

- Financials as of September 2020
- Project baselined in September 2017
- Re-baselined in June 2020
- Year of Expenditure dollars

## Progress Since Last Report

- Additional project funding
- Substantial completion of utility work
- Track slab 70% complete
- OMF and yard
- Vehicle contract – final design reviews underway

- **Resolution No. R2020-12** – Amended the Adopted 2020 Budget by increasing the baseline budget by \$35,400,000
- **Motion No. M2020-31** – Increased the construction contract contingency in the amount of \$27,400,000
- **Motion No. M2020-32** – Increased contract contingency for design services during construction in the amount of \$1,000,000
- **Motion No. M2020-33** – Increased the contract contingency for construction management consultant services in the amount of \$2,070,000
- **Motion No. M2020-34** – Executed a planned contract modification for Tacoma Link LRV engineering and inspection consultant services in the amount of \$1,997,814

# Construction Headings (Work Zones)

- **Heading 1** – Commerce St./Stadium Way to Division Ave.
- **Heading 2** – Stadium District
  - 2A – Stadium High School
  - 2B – N. Tacoma Ave./N. 1st to Division/MLK
- **Heading 3** – MLK/Division to MLK/S. 19<sup>th</sup>
- **Operations and Maintenance Facility Expansion**

# Heading 1 - Commerce St./Stadium Way



## *Summary of the Work*

- Utility Work (water line, sewer and storm)
- Install TPSS
- Trackway and station platforms; OCS foundations/poles
- Traffic signalization/street light improvements
  - Commerce/S. 9<sup>th</sup>
  - Commerce/S. 7<sup>th</sup>
  - S. Stadium Way/I-705
  - S. Stadium Way/S. 4<sup>th</sup>
- Road restoration, ADA curb ramps
- MOT: single lane closures/two-way traffic
- Constraints: cutover at Commerce/S. 9<sup>th</sup> – two phases



# Heading 1 - Commerce St./Stadium Way



**Stadium Way/I-705 track work in progress**



**Stadium Way/I-705 open**

# Heading 1 - Commerce St./Stadium Way



Utility work on Commerce St.



TPSS-1: Footings

# Heading 2A - Stadium High School



## ***Summary of Work***

- Utility Work (water, sewer and storm lines)
- Trackway– one lane traffic
- Enhanced pedestrian signal
  - North 1<sup>st</sup> St./N. Broadway
- OCS foundations/poles
- Road restoration, ADA curb ramps
- Constraints: Summer work @ Stadium HS

## Heading 2A – Stadium High School



OCS Pole installation at Stadium High School



Welding outbound rail at curve

# Heading 2B – Stadium District



## ***Summary of Work***

- Utility Work (water, sewer and storm lines) – some weekend closures @ intersections
- TPSS
- Station and OCS foundations/poles
- Trackway
- Traffic signalization improvements
  - Division/N. 1<sup>st</sup> St./N. Yakima
  - Division/N. I St.
  - Division/N. K. Street/MLK Jr. Way
- Road restoration, ADA curb ramps
- Constraints: Holiday moratorium

## Heading 2B – Stadium District

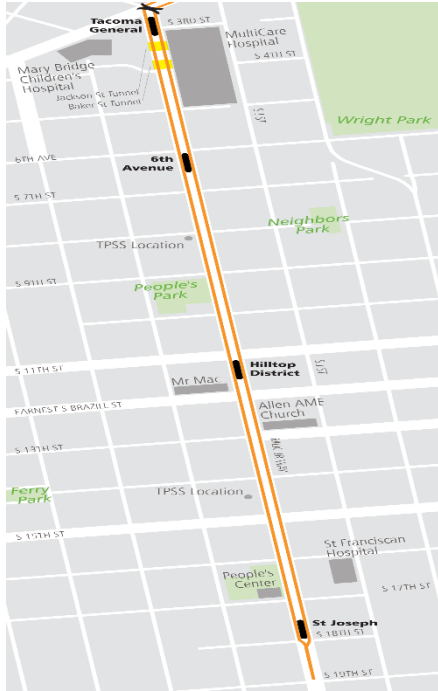


**N. 1<sup>st</sup> Street**



**Grading for outbound track slab on Division Ave.**

# Heading 3 – Hilltop District



## Summary of Work

- Utility Work (water, sewer and storm lines) – some weekend closures @ intersections
- (2) TPSS
- (4) Stations
- OCS foundations and poles
- Trackway
- Traffic signalization improvements
  - MLK Jr. Way/6<sup>th</sup>
  - MLK Jr. Way/S. 9<sup>th</sup>
  - MLK Jr. Way/S. 11<sup>th</sup> St.
  - MLK Jr. Way/Earnest S. Brazill St.
  - MLK Jr. Way/S. 15<sup>th</sup> St.
  - MLK Jr. Way/S. 18<sup>th</sup> St.
- Road restoration, ADA curb ramps
- Constraints: Holiday moratorium; MultiCare Emergency Room access 24/7

# Heading 3 – Hilltop District



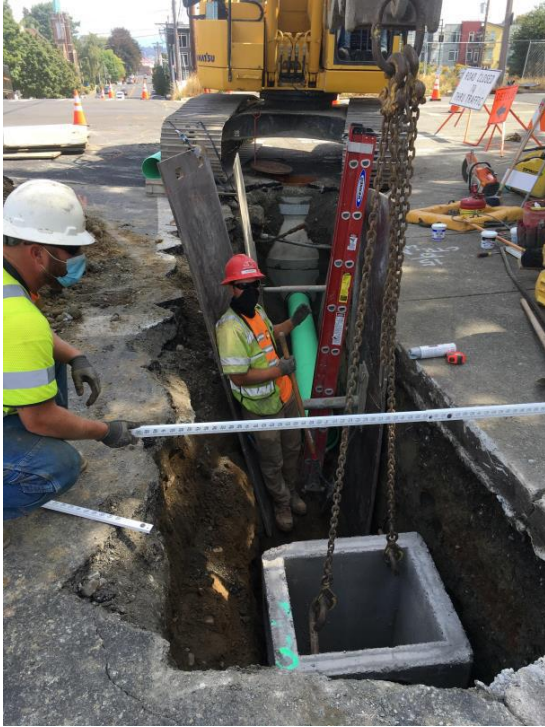
**Work in progress at Division Ave. and MLK**



**Track installation at Tacoma General**



## Heading 3 – Hilltop District



**Installing catch basin at  
MLK and 6<sup>th</sup> Ave.**



**Excavation for track slab at S. 18<sup>th</sup>**

# Operations and Maintenance Facility

## *Summary of Work*

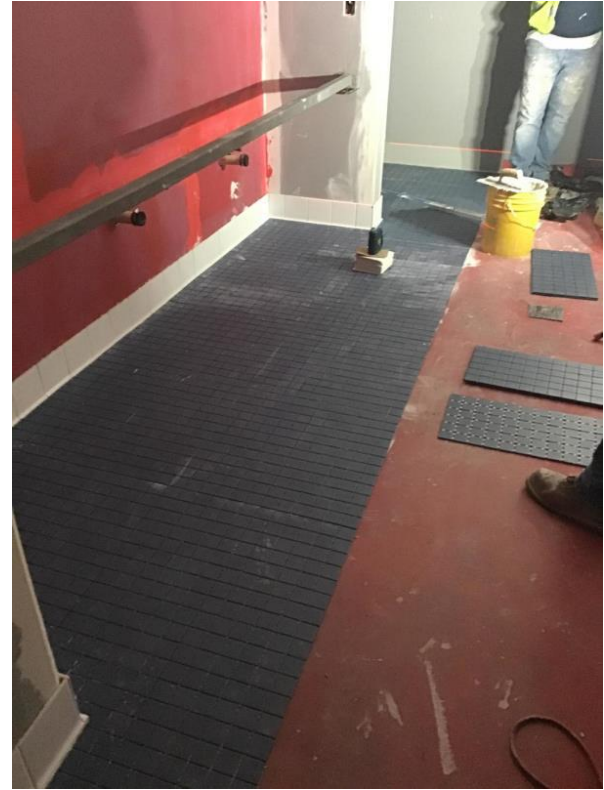


- New rail yard
- Additional administrative space and spare parts storage
- Prefabricated paint booth and vehicle wash facilities
- In floor wheel truing machine

# Operations and Maintenance Facility



Special track work in progress at yard



Tile installation at 2<sup>nd</sup> Fl. restrooms

# Community Outreach

## Hilltop Tacoma Link Extension

Construction alert


Opening 2022

February 15, 2023

N. 1<sup>st</sup> Street from N. Tacoma Avenue to Yakima Avenue closes for track installation in early March.

Crews will install the east section of track on N. 1<sup>st</sup> Street from just west of Tacoma Ave. to Yakima Ave. starting on March 2. During this work, N. 1<sup>st</sup> St. will be closed to traffic in both directions. The track work will be done in phases with the section from Tacoma Ave. to the bus transfer driveway completed first -- in about 2-3 weeks. At the same time, crews will work on the section from the driveway to Yakima Ave., taking about 10-12 weeks to install the track and the station platform.

**N. 1<sup>st</sup> Street closes for track installation**



The track installation process includes:

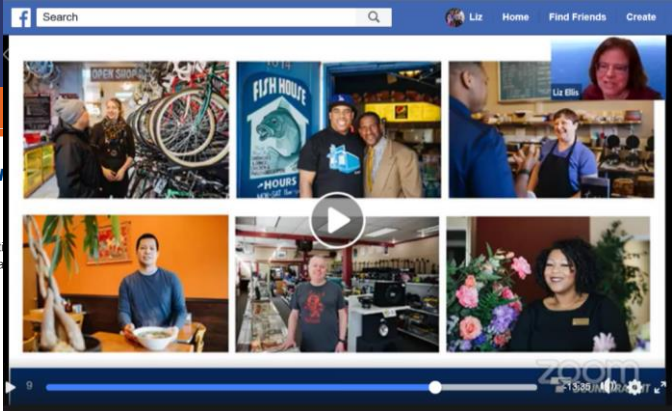
- Install underground electrical vessels.
- Remove asphalt and soil.
- Move rail into place in the street.
- Pour concrete around the rail.

## Hilltop Tacoma Link

Construction alert

### Night-time work at Division Avenue St. this week

To minimize impacts to businesses, crews will install underground utilities during the night from Monday to Tuesday.



**Sound Transit**  
 Admin · Published by Liz Ellis Satterthwaite (7) · June 23

Lookin' good, Tacoma, as crews smoothed concrete around the rail on the west side of Stadium Way near I-705 today! The I-705 onramp and off-ramp will completely close at Stadium Way as soon as Thursday, June 25 for 3-4 weeks, while crews install track on the east side of Stadium Way near the I-705 ramps: <https://bit.ly/2Vd886r>



**Loyal to the Local™**

**SHOP STADIUM N. 1ST STREET IS OPEN**

Be Loyal to the Local

**SOUNDTRANSIT**



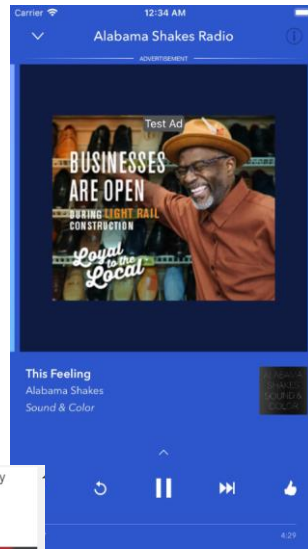
# Loyal to the Local



Gas Pump  
Toppers



News Tribune Digital Ads



Pandora



OVER  
**6.5** MILLION  
IMPRESSIONS  
IN 2020



Tacoma Dome Ads

Looking for an amazing cup of coffee along with a friendly smile? Stop by North Slope Coffee at the entrance to Stadium Thriftway where every customer is treated like a good friend. Find out more about Tacoma Hilltop/Stadium businesses: <https://bit.ly/2SumPPo>



Facebook Ads



Space Works Art  
Installations



Train Wrap



Tacoma Link Channel

# Key Issues and Challenges

- Construction of essential facilities during a global pandemic
- Maintaining a high level of safety awareness and accident prevention
- Design issues
- Potential construction contract claims
- Stakeholder and neighborhood impacts during construction
- Public Outreach during construction
- Testing and commissioning planning
- Impacts to Operations - cutovers

Thank you.

*Thank you.*



 [soundtransit.org](https://www.soundtransit.org)

