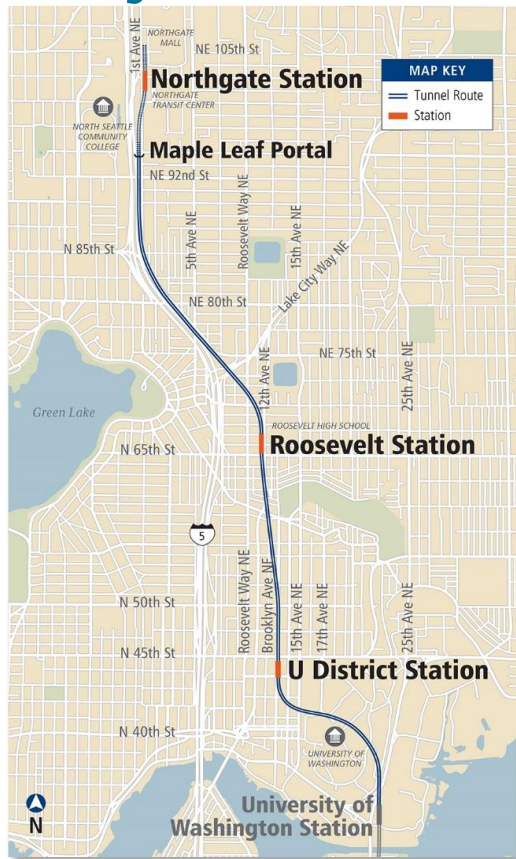


# ***Northgate Link Extension Update***

*Citizen Oversight Panel*

*September 2, 2020*

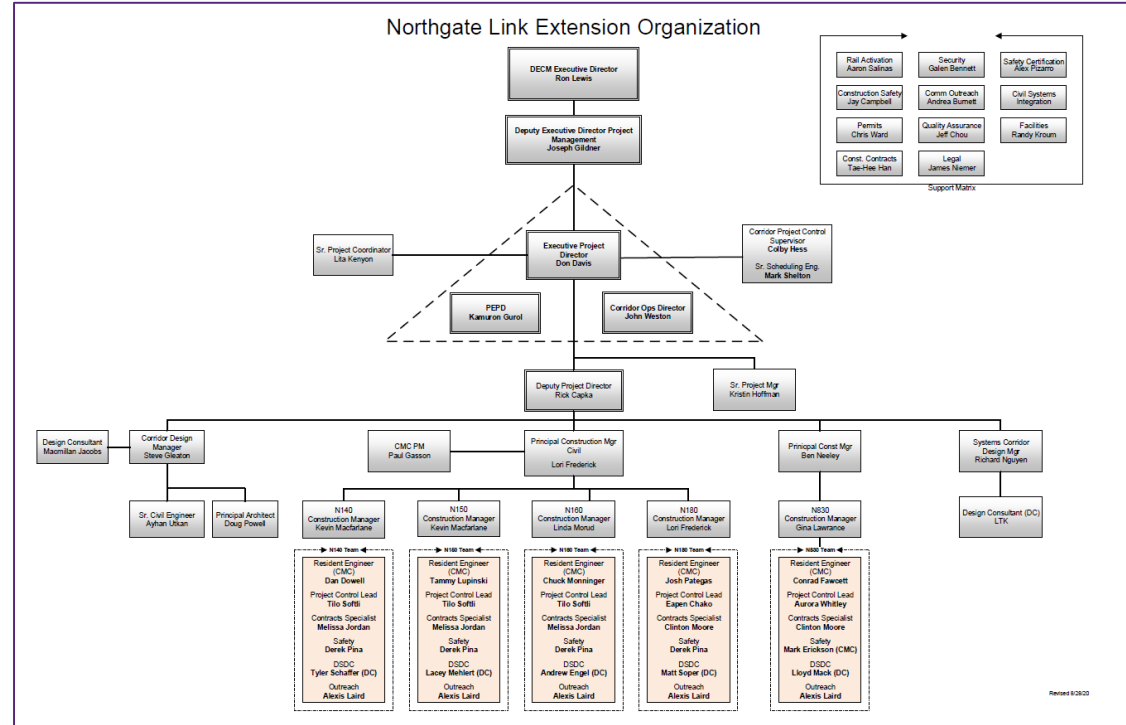
# Project Overview



- **4.3 mile extension from UW to Northgate**
- **3 light rail stations & 1 parking garage**
- **Fast and reliable service in congested I-5 corridor (14 minutes from Northgate to Downtown)**
- **Estimated over 60,000 weekday boardings (2030)**
- **Serves academic facilities (North Seattle College, Roosevelt High School and UW)**
- **Serves active business districts at Northgate, Roosevelt and U District**
- **Transit Oriented Development (TOD) projects are planned for all three station sites**

# Project Organization

- **Integrated Sound Transit Team:**
  - ~25 dedicated ST staff
  - ST support staff
  - Design/CM consultants
  - 11 separate construction contracts



# Project Safety

- **Safety is a core Agency value and the top priority on the Northgate Link Extension**
- **Project Safety Metrics thru July 2020:**

<i>Data/Measure</i>	<i>July 2020</i>	<i>Year to Date</i>	<i>Project to Date</i>
<i>Recordable Injury/Illness Cases</i>	0	1	114
<i>Days Away From Work Cases</i>	0	0	6
<i>Total # of Hours (GC &amp; Subs)</i>	48,516	364,126	5,442,250
<i>OSHA Incident Rates</i>	<i>Month</i>	<i>Year to Date</i>	<i>Project to Date</i>
<i>Recordable Injury Rate</i>	0.00	0.55	4.19
<i>LTI Rate</i>	0.00	0.00	0.22
<i>Recordable Injury Rate WA State Average</i>	6.00		
<i>LTI Rate WA State Average</i>	1.90		

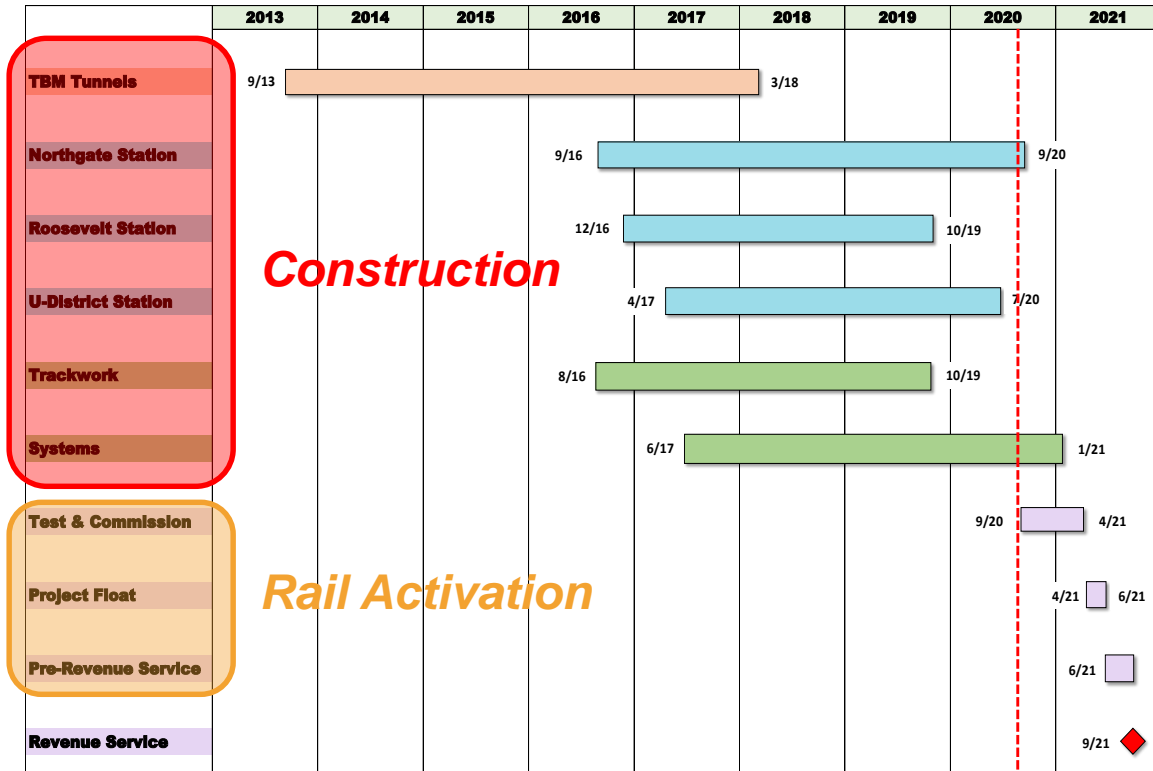
# Project Budget

BUDGET AND CONTINGENCY		
Project Budget (incl Contingency)	\$	1,899,755,500
Commitments To-Date (08-17-20)	\$	1,710,973,956
Contingency Remaining	\$	136,825,374
% of Contingency Spent		65.5%
% Physical Percent Complete (estimated)		96.1%

➤ *Currently projecting \$52M+ savings at completion*

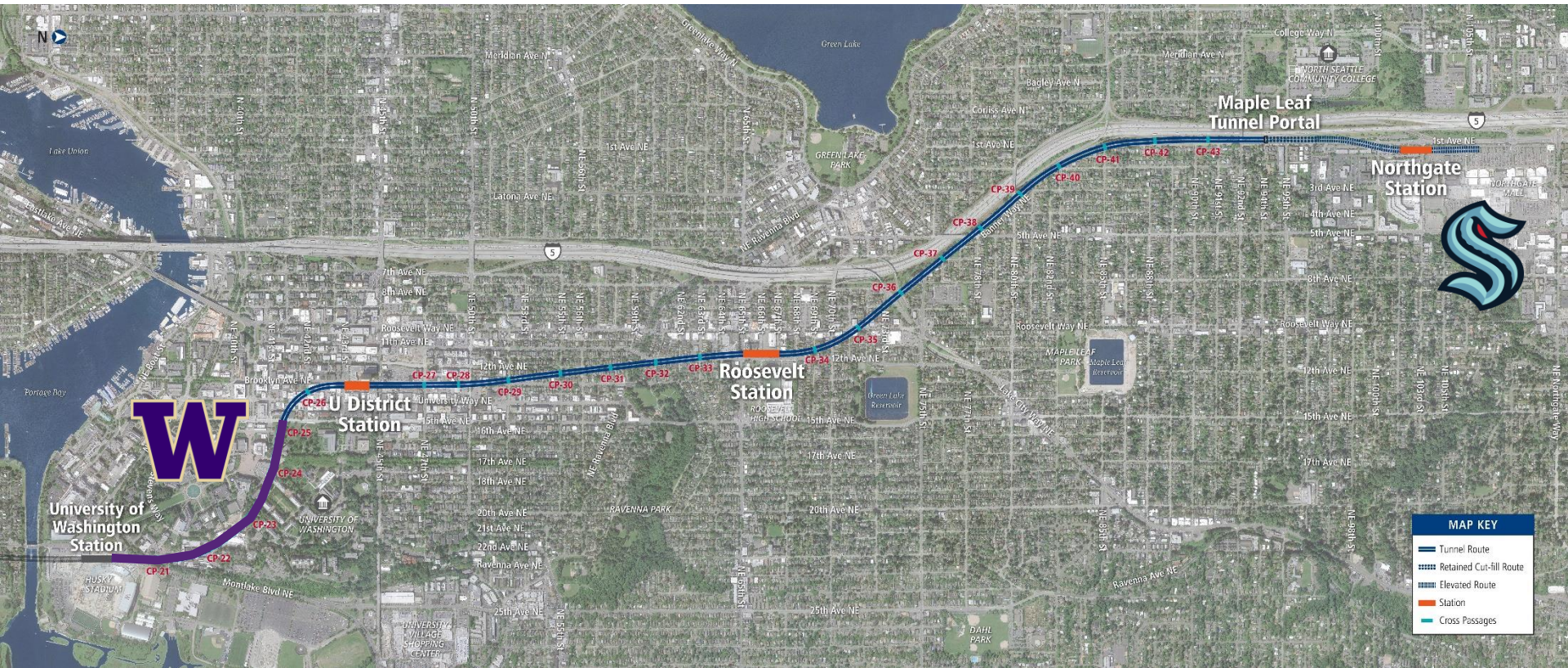
# Project Schedule

- *Currently 96% complete with construction*
- *On schedule to open for Revenue Service in September 2021*





# Project Alignment





# TBM Tunnels UW Station to MLP

## Contract Overview:

- *Design-Bid-Build contract with JCM Northlink LLC*
- *Scope of Work: portal structure, 2 station box excavations, 3.5 miles twin 18-ft 10-in tunnel, 23 cross passages, tunnel invert, walkway & raceways, tunnel lighting and dry standpipe*
- *Contract Amount: \$500m*
- *Construction Start: September 2013*
- *Construction Complete: March 2018*





# TBM at Roosevelt Station



# TBM Removal at UWS



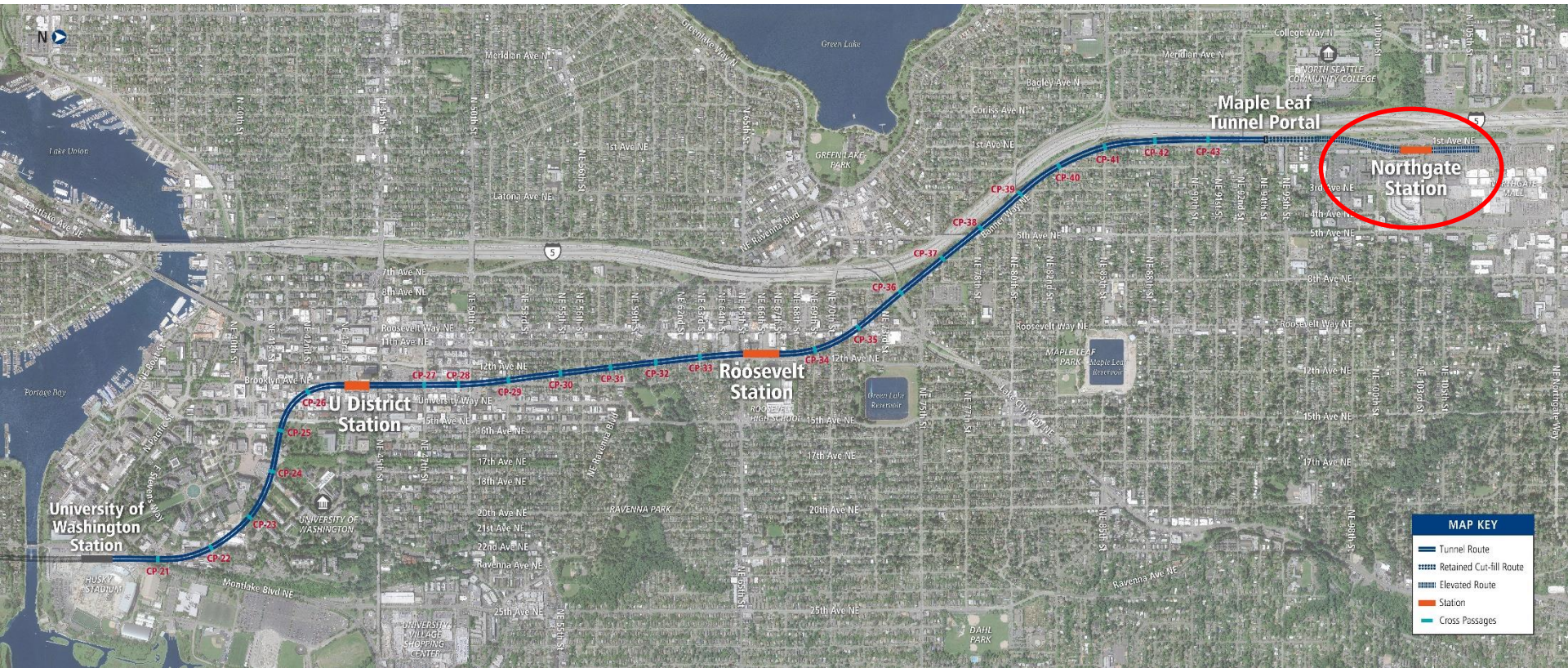


# Cross Passage Construction





# Project Alignment





# Northgate Station, Guideway, Garage

## Contract Overview:

- **Design-Bid-Build contract with Absher Construction**
- **Scope of Work: 0.7 mile elevated guideway, elevated station, 450-stall parking garage**
- **Contract Amount: \$187m**
- **Construction Start: October 2016**
- **Construction 97% Complete**



# Northgate Station, Guideway, Garage



*Looking NW towards Station*

# *Northgate Station, Guideway, Garage*



*Looking North towards South Entrance*



*Looking South from Platform Level*



# SDOT Northgate Pedestrian & Bicycle Bridge

- **Scope of Work:** 16-ft wide, 1900-ft long bridge spanning I-5 from NSC to Northgate Station
- **Construction Start:** January 2020
- **Scheduled Completion:** August 2021
- **Progress Summary:**
  - 40% complete overall
  - all shafts complete
  - 90% of columns installed
  - 75% of precast girders installed
  - main span fabrication (offsite) started





# ***SDOT Northgate Pedestrian & Bicycle Bridge***



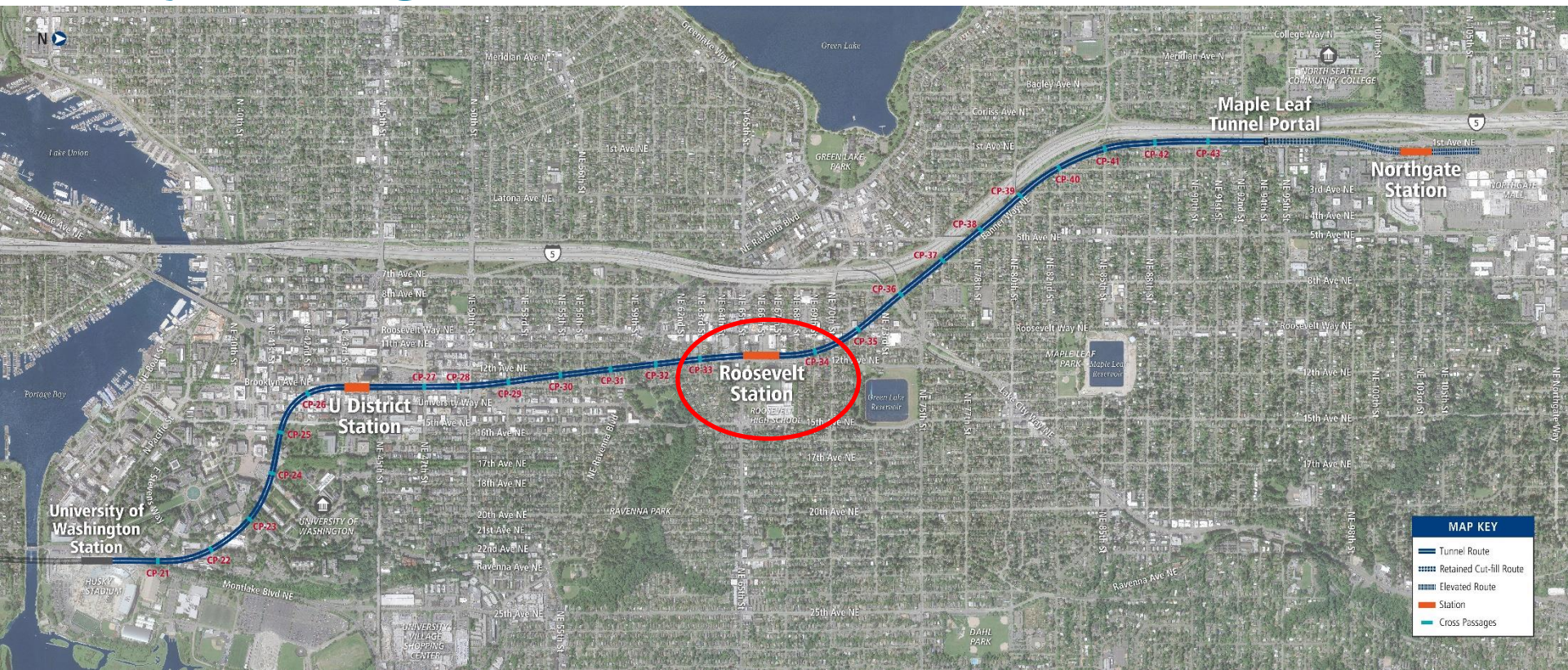
***Bridge Column adjacent to Station***



***Looking SW at Bridge Ramp from Station***



# Project Alignment

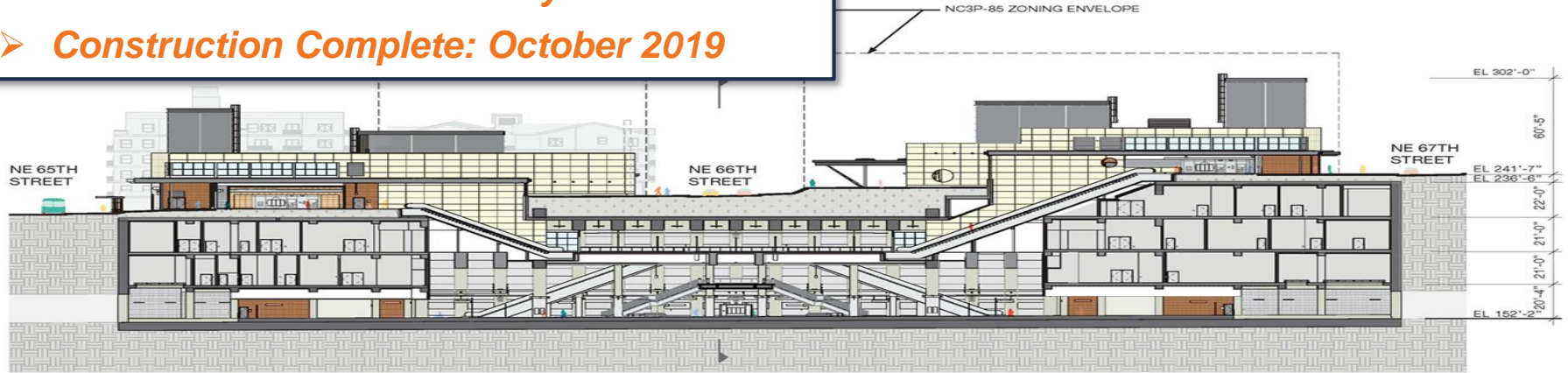
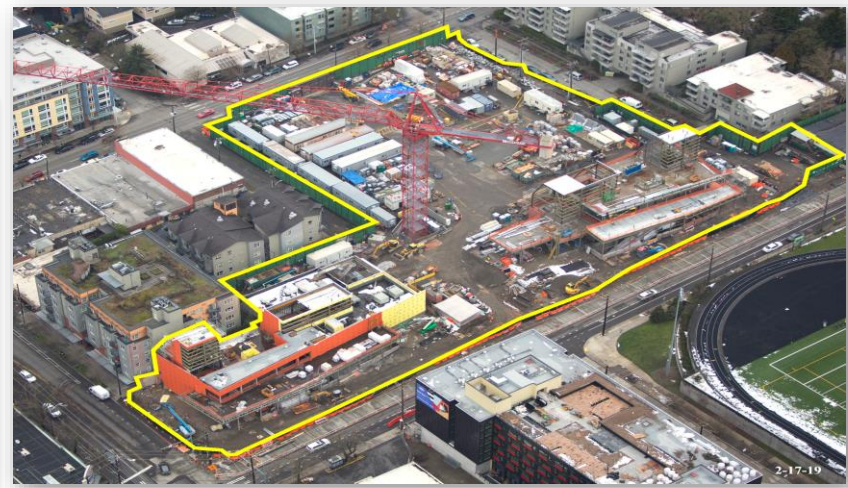




# Roosevelt Station

## Contract Overview:

- GC/CM contract with Hoffman Construction
- Scope of Work: 90-ft deep, 480-ft long, 4-level underground station; 2 head houses
- Contract Amount: \$168m
- Construction Start: February 2017
- Construction Complete: October 2019



# Roosevelt Station

2013





# Roosevelt Station

2017





# Roosevelt Station

2019



# Roosevelt Station



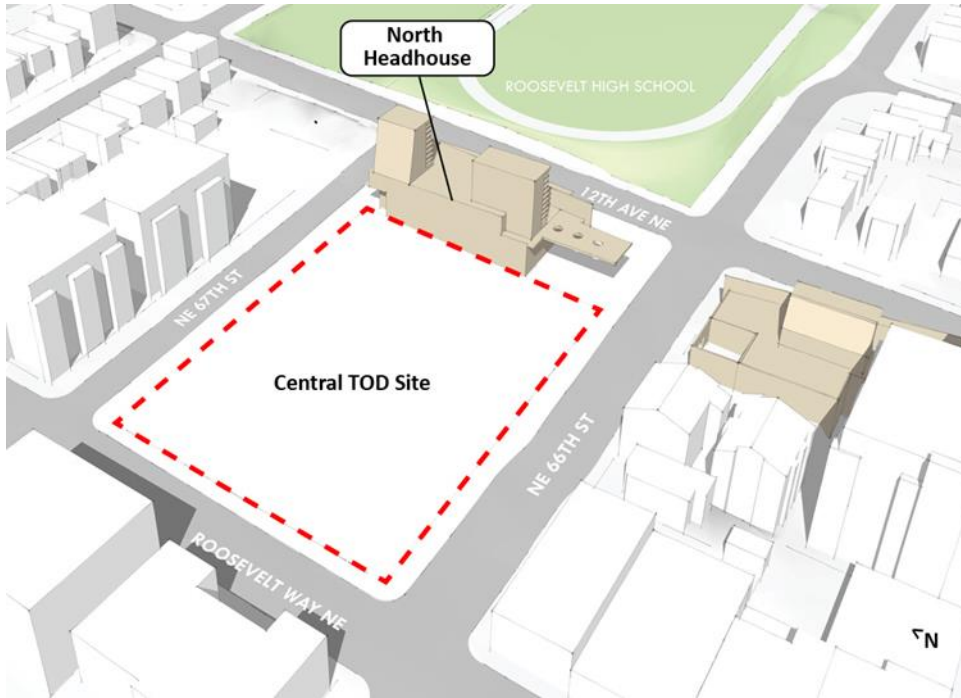
*South Entrance off NE 65<sup>th</sup> St.*



*Station Platform Level*



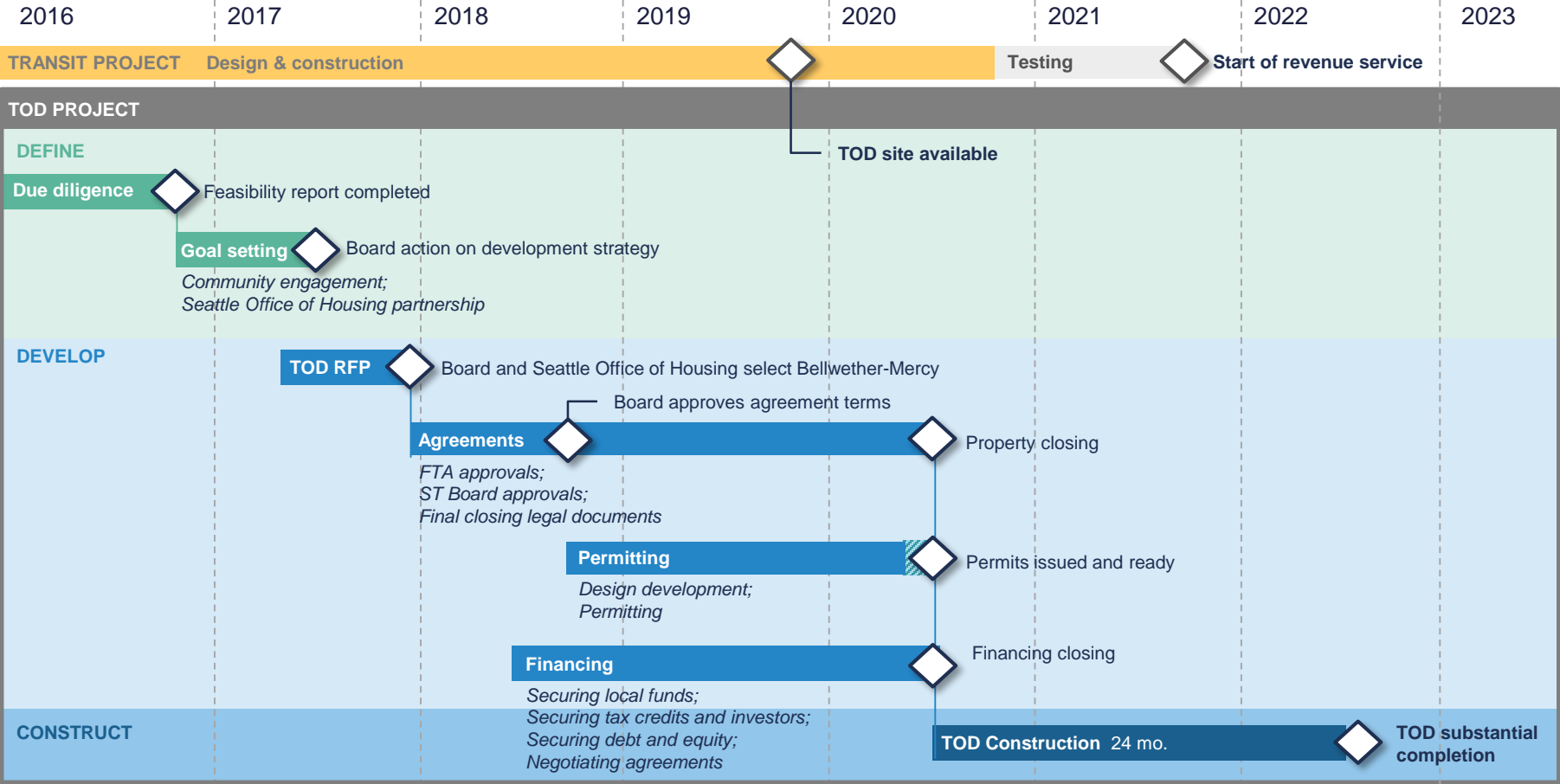
# Roosevelt Transit Oriented Development



- 1.2 acres of TOD property used for construction staging
- Roosevelt Station opens for revenue service 2021
- TOD project (Cedar Crossing) complete 2022
- Developers are Bellwether Housing and Mercy Housing NW
- Will provide 250+ affordable housing units & childcare



# Cedar Crossing TOD Schedule



# TOD Key Business Terms



Category	Agreement
Housing units	At least 230 units; Anticipate 254
Total housing units affordable	100% of units <u>at or below</u> 60% Area Median Income (AMI)
Deeper affordability	At least 20% of units <u>below</u> 60% AMI; Anticipate 40%
Family sized units	At least 20% of units sized 2+ bedrooms; Anticipate 40%
Active street-level uses	At least 12,000 SF of commercial space, excluding daycare space; not regulating daycare in agreement
Sustainability	Designed to meet or exceed Washington State Evergreen Standard
Sale price	\$6,750,000 with \$130,000 in sale proceeds held in escrow for environmental work, if encountered, otherwise released to ST



# ***TOD Under Construction***

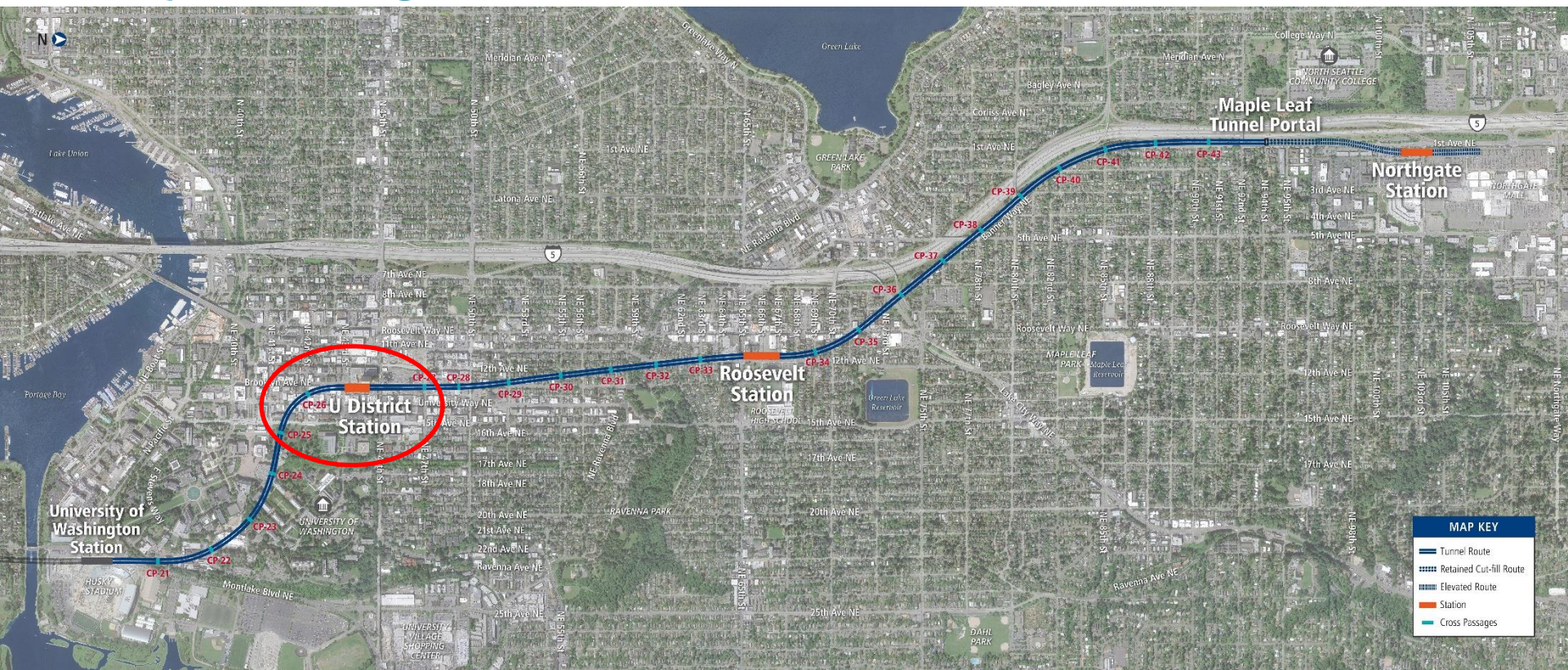


# *Cedar Crossing TOD*





# Project Alignment

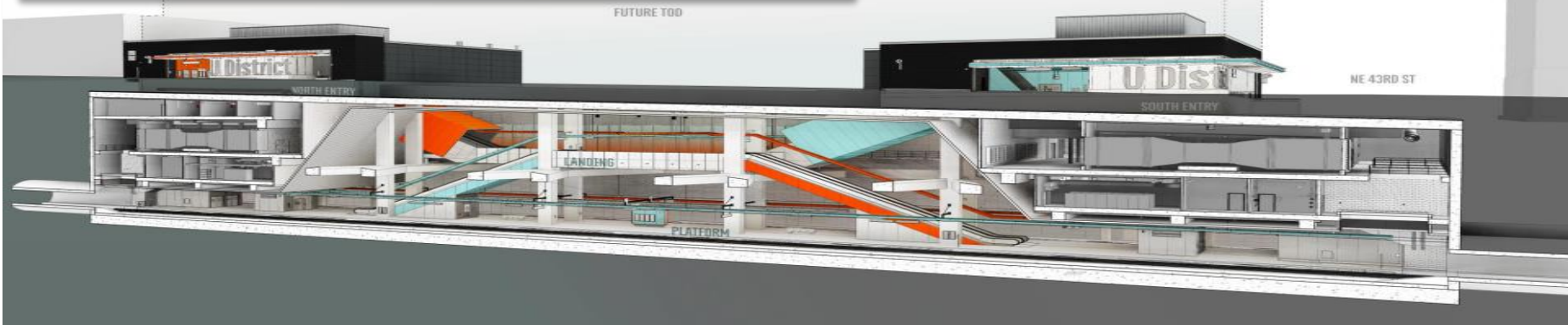




# U District Station

## Contract Overview:

- GC/CM contract with Hoffman Construction
- Scope of Work: 80-ft deep, 400-ft long, 4-level underground station; 2 head houses
- Contract Amount: \$169m
- Construction Start: July 2017
- Construction Complete: July 2020





# *U District Station*



*Looking NE on Brooklyn Ave NE to South Entrance*



*Looking SW from North Entrance Roof*

# *U District Station*



*Looking North at the Mezzanine Level*



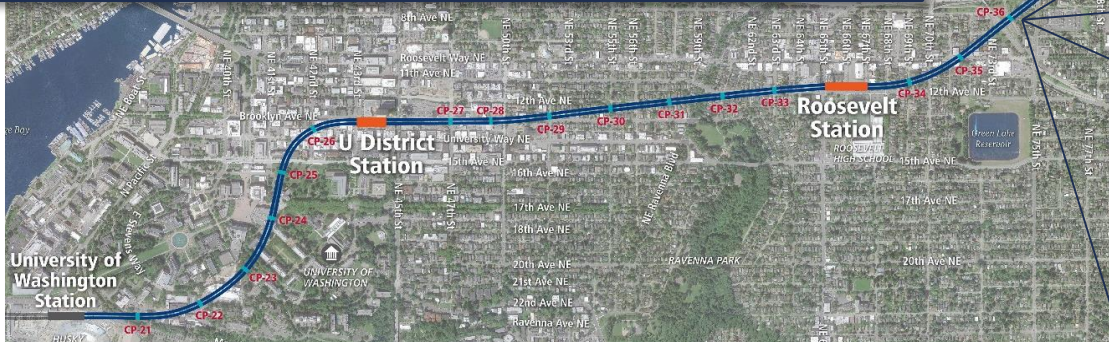
*Looking South towards the SB Platform*



# Trackwork

## Contract Overview:

- **Design-Bid-Build contract with Stacy and Witbeck**
- **Scope of Work: Trackwork (plinth + rail) for alignment; 5 Hz & 16 Hz floating slabs**
- **Contract Amount: \$76m**
- **Construction Start: August 2016**
- **Construction Complete: October 2019**



# Trackwork – Floating Slabs





# Systems

## Contract Overview:

- Heavy Civil GC/CM contract with Mass Electric (MEC)
- Scope of Work: Traction Power, Overhead Catenary System, Communications, Signaling
- Contract Amount: \$104m
- Construction Start: June 2017
- Scheduled Completion: Q1 2021
- Construction 74% complete



Power Cable Installation at UDS



Equipment Testing at RVS

# Systems

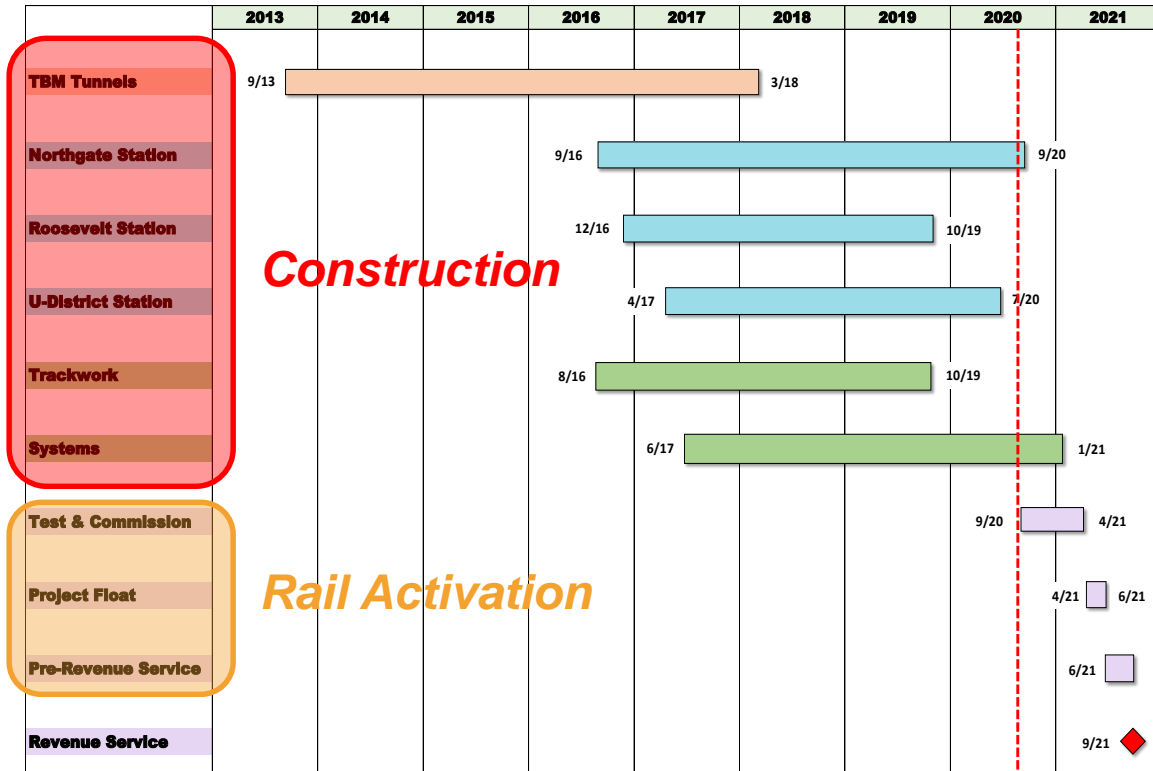


*Looking North from Northgate Station at Overhead Catenary System (OCS)*



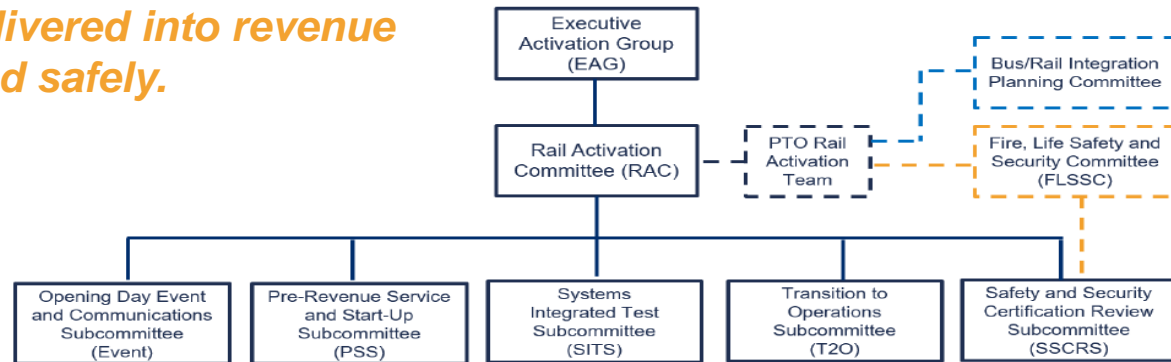
# Project Schedule

- *Currently 96% complete with construction*
- *On schedule to open for Revenue Service in September 2021*



# Rail Activation

- Rail activation is managed by the Project Transition Office in the Executive Department, led by Rail Activation Manager (RAM)
- RAM ensures coordination of schedule and resources for multiple, simultaneous activation efforts to assure the Northgate Link Extension is delivered into revenue service efficiently and safely.
- RAM is supported by a set of committees comprised of Sound Transit staff with the responsibilities for performing, documenting, and certifying various program elements tied to the start-up and testing of the system.





*Thank you.*



 [\*soundtransit.org\*](https://soundtransit.org)

