

Tacoma Dome Link Extension

Citizen Oversight Panel Project Update

10/21/20

Tacoma Dome Link Extension (TDLE)

- 10 miles
- 4 stations
- 1 river crossing

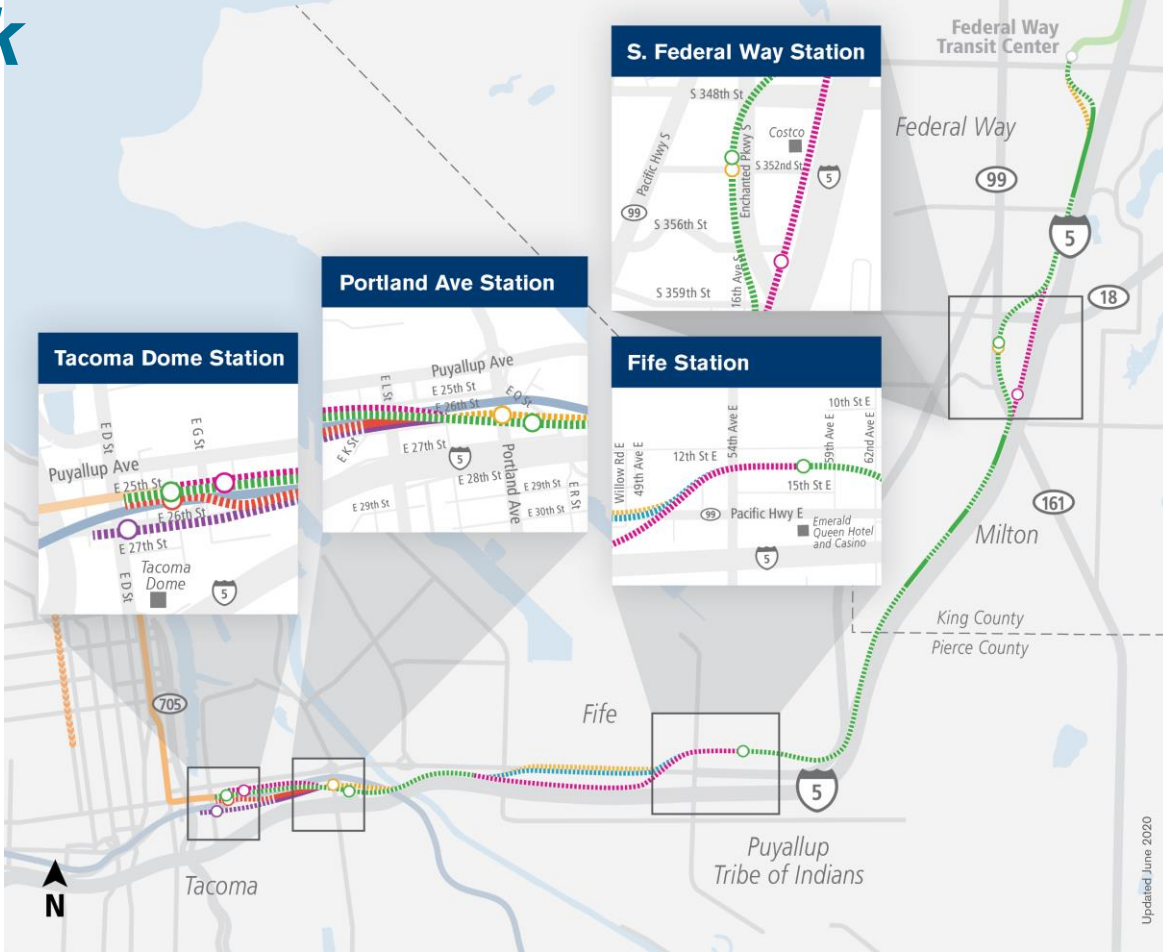
■ Preferred Alternative ■ Other Draft EIS alternatives
■ Design options ■

Route profiles

Elevated Surface
 Station alternatives

Other rail service

■ Angle Lake–Federal Way (2024) ■ Tacoma Dome–Theater District (in service)
■ Sounder South: Lakewood–Seattle (in service) >>> Theater District–St Joseph (2022)
 Existing station



Current Status: Environmental review underway

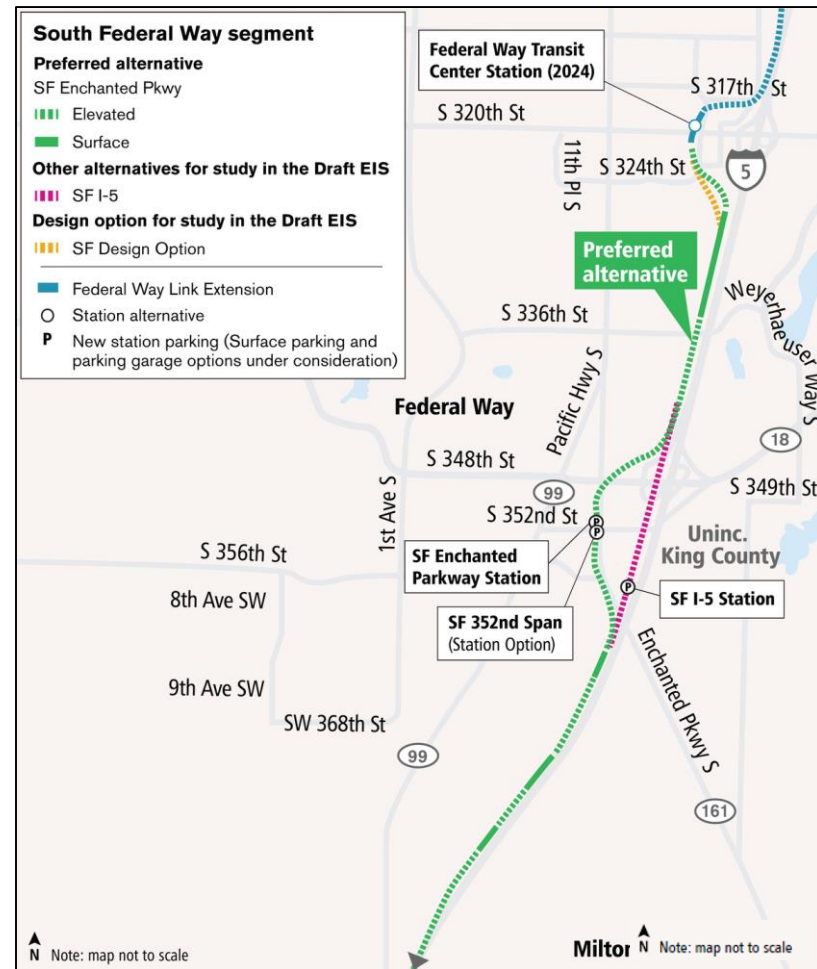
Our technical experts are working on:

- Collecting data out in the field
- Studying potential impacts and benefits to route and station options
- Identifying ways to address impacts

Findings will be included in the Draft Environmental Impact Statement, expected to be published in 2022

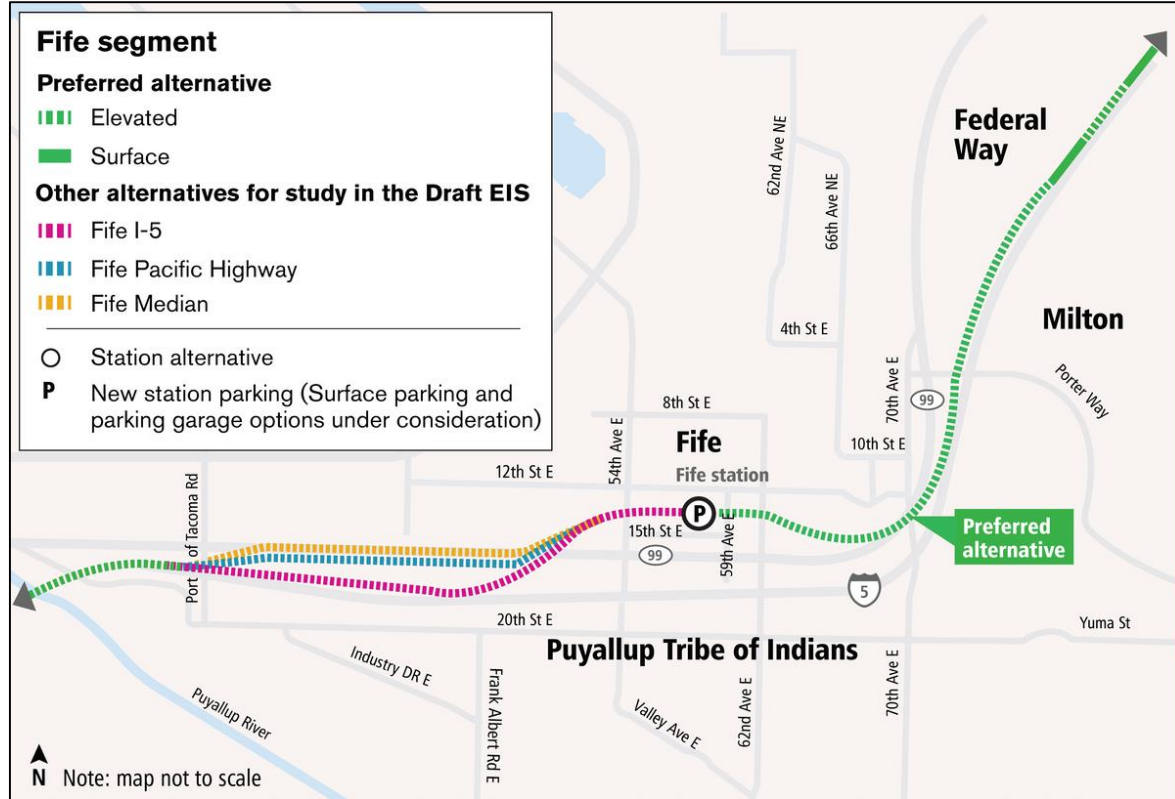
South Federal Way Segment: overview

- Two alignment alternatives leaving Federal Way Transit Center Station (FWLE)
- Two station location alternatives +1 option
 - SF Enchanted Parkway Station (*preferred*)
 - SF 352nd Span (*option*)
 - SF I-5 Station
- 500 parking stalls (structure or surface)



Fife Station Segment: overview

- One station location
- 500 parking stalls (structure or surface)
- Three alignment alternatives (*no preferred west of station*):
 - Fife Pacific Highway
 - Fife Median
 - Fife I-5



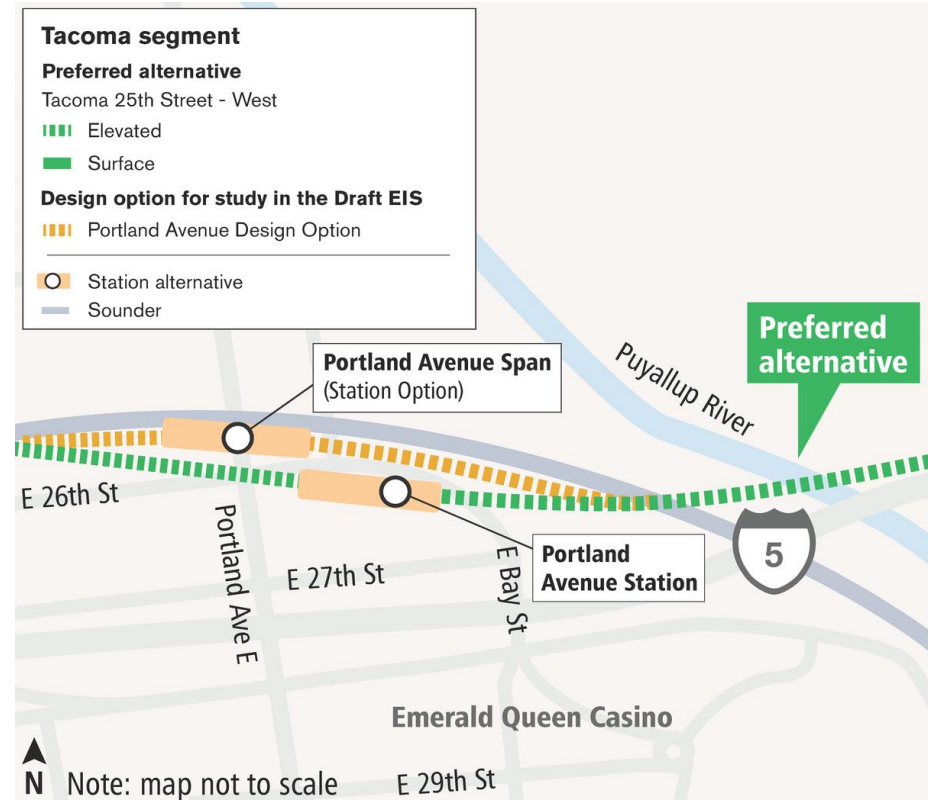
Portland Avenue Station: Overview

Puyallup River light rail-only bridge two crossing options:

- Clear span
- In-river piers

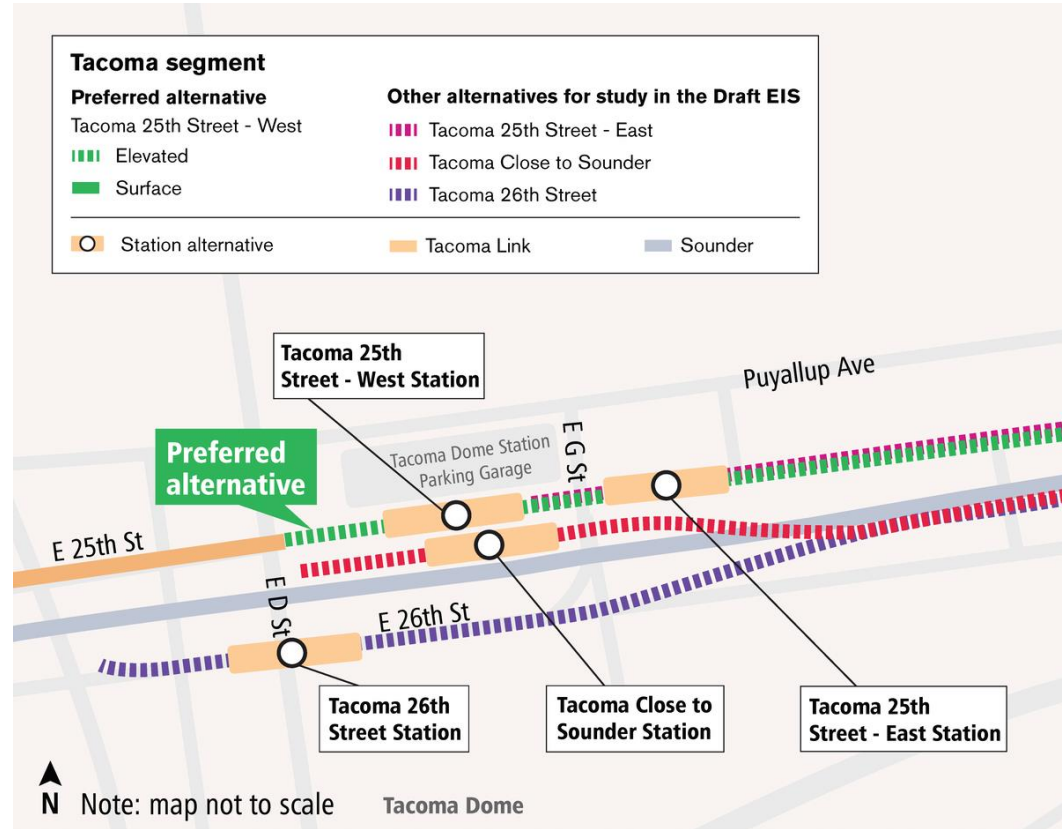
One station alternative location + one station option

- Portland Avenue Station (*preferred*)
- Portland Avenue Span (*option*)
- Board direction to evaluate a pedestrian bridge over I-5



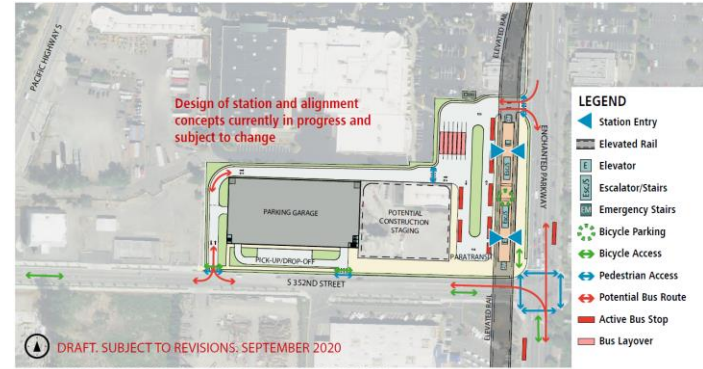
Tacoma Dome Station: Overview

- Two primary alignment alternatives
- Four station location alternatives
 - TD 25th St. West (Preferred)
 - TD 25th St. East
 - TD 26th St.
 - Developed Close-to-Sounder alignment and station alternative at Board's direction
- Pedestrian and bike bridge options for all station alternatives

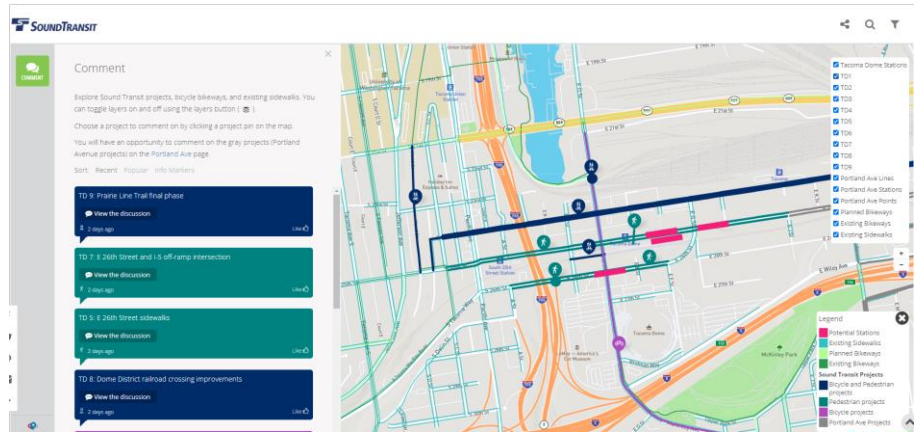


Station access planning

- Online open house available until November 2
- View the station design concepts
- Share feedback on accessing the station - walking, rolling and biking to our stations



SOUTH FEDERAL WAY ENCHANTED PARKWAY STATION
DESIGN CONCEPT AND CIRCULATION (Garage Parking Configuration)



TDLE environmental review milestones*

Public participation throughout

2019

2019

ST Board & FTA identified alternatives to study in EIS

2021/2022

Early 2022

Draft EIS issued;
public comment period

Mid 2022

ST Board confirms or revises Preferred Alternative

2023

Mid/Late 2023

Final EIS issued
Late 2023
ST Board selects project to be built
FTA issues record of decision (ROD)

***COVID-19 impacts:
dates subject to change pending realignment decisions by Sound Transit Board**

10/07/20

Thank you.

 ***tdlink.participate.online***

 **SOUNDTRANSIT**

 ***soundtransit.org***

