

West Seattle and Ballard Link Extensions

*Citizens Oversight Panel
September 2020*



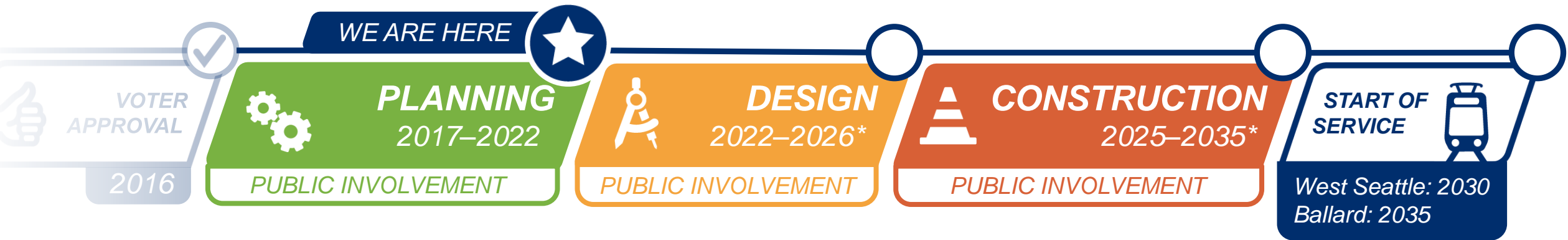
Topics

- Project timeline
- Draft EIS alternatives
- Community engagement
- Next steps

Project timeline

West Seattle and Ballard Link Extensions

Project timeline



Pre-COVID-19 schedule



VOTER
APPROVAL

2016



PLANNING



DESIGN

2017–2019

Alternatives development

Feb–Mar 2018:
Early scoping

Feb–Apr 2019:
Scoping

May, Oct 2019: Board identified preferred alternatives and other DEIS alternatives

2019–2022

Environmental review

Spring 2021: Publish Draft EIS

DEIS public comment period

Mid 2021: Board confirms or modifies preferred alternatives

2022: Publish Final EIS

Board selects projects to be built

Federal Record of Decision

***Pre-COVID-19
schedule***

PUBLIC INVOLVEMENT

 **VOTER
APPROVAL**

2016



PLANNING



2017–2019

Alternatives development

Feb–Mar 2018:
Early scoping

Feb–Apr 2019:
Scoping

May, Oct 2019: Board
identified preferred
alternatives and other
DEIS alternatives

2019–2022

Environmental review

Spring 2021: Publish Draft EIS

DEIS public comment period

Mid 2021: Board confirms or
modifies preferred alternatives

2022: Publish Final EIS

Board selects projects
to be built

Federal Record of Decision

***Pre-COVID-19
schedule***

PUBLIC INVOLVEMENT

 **VOTER
APPROVAL**

2016



PLANNING



2017–2019

Alternatives development

Feb–Mar 2018:
Early scoping

Feb–Apr 2019:
Scoping

 **May, Oct 2019: Board
identified preferred
alternatives and other
DEIS alternatives**

2019–2022

Environmental review

Spring 2021: Publish Draft EIS

DEIS public comment period

Mid 2021: Board confirms or
modifies preferred alternatives

2022: Publish Final EIS

Board selects projects
to be built

Federal Record of Decision

***Pre-COVID-19
schedule***

PUBLIC INVOLVEMENT

Draft EIS alternatives

What we're studying in this phase



- Preferred Alternatives
- Preferred Alternatives with Third-Party Funding
- Other Draft EIS alternatives



VOTER
APPROVAL

2016



PLANNING



DES

2017–2019

Alternatives development

Feb–Mar 2018:
Early scoping

Feb–Apr 2019:
Scoping

May, Oct 2019: Board
identified preferred
alternatives and other
DEIS alternatives



2019–2022

Environmental review

Spring 2021: Publish Draft EIS

DEIS public comment period

Mid 2021: Board confirms or
modifies preferred alternatives

2022: Publish Final EIS

Board selects projects
to be built

Federal Record of Decision

***Pre-COVID-19
schedule***

PUBLIC INVOLVEMENT



VOTER
APPROVAL

2016



PLANNING



DES

2017–2019

Alternatives development

Feb–Mar 2018:
Early scoping

Feb–Apr 2019:
Scoping

May, Oct 2019: Board
identified preferred
alternatives and other
DEIS alternatives



2019–2022

Environmental review

Spring 2021: Publish Draft EIS

DEIS public comment period

Mid 2021: Board confirms or
modifies preferred alternatives

2022: Publish Final EIS

Board selects projects
to be built

Federal Record of Decision

***Pre-COVID-19
schedule***

PUBLIC INVOLVEMENT



VOTER
APPROVAL

2016



PLANNING



DES

2017–2019

Alternatives development

Feb–Mar 2018:
Early scoping

Feb–Apr 2019:
Scoping

May, Oct 2019: Board
identified preferred
alternatives and other
DEIS alternatives



2019–2022

Environmental review

Spring 2021: Publish Draft EIS

DEIS public comment period

Mid 2021: Board confirms or
modifies preferred alternatives

2022: Publish Final EIS

Board selects projects
to be built

Federal Record of Decision

***Pre-COVID-19
schedule***

PUBLIC INVOLVEMENT

 **VOTER
APPROVAL**

2016



PLANNING



2017–2019

Alternatives development

Feb–Mar 2018:
Early scoping

Feb–Apr 2019:
Scoping

May, Oct 2019: Board
identified preferred
alternatives and other
DEIS alternatives



2019–2022

Environmental review

Spring 2021: Publish Draft EIS

DEIS public comment period

**Mid 2021: Board confirms or
modifies preferred alternatives**

2022: Publish Final EIS

Board selects projects
to be built

Federal Record of Decision

***Pre-COVID-19
schedule***

PUBLIC INVOLVEMENT



VOTER
APPROVAL

2016



PLANNING



DES

2017–2019

Alternatives development

Feb–Mar 2018:
Early scoping

Feb–Apr 2019:
Scoping

May, Oct 2019: Board
identified preferred
alternatives and other
DEIS alternatives



2019–2022

Environmental review

Spring 2021: Publish Draft EIS

DEIS public comment period

Mid 2021: Board confirms or
modifies preferred alternatives

2022: Publish Final EIS

Board selects projects
to be built

Federal Record of Decision

***Pre-COVID-19
schedule***

PUBLIC INVOLVEMENT

 **VOTER
APPROVAL**

2016



PLANNING



2017–2019

Alternatives development

Feb–Mar 2018:
Early scoping

Feb–Apr 2019:
Scoping

May, Oct 2019: Board
identified preferred
alternatives and o
DEIS alternatives



2019–2022

Environmental review

Spring 2021: Publish Draft EIS

DEIS public comment period

Mid 2021: Board confirms or
modifies preferred alternatives

2022: Publish Final EIS

**Board selects projects
to be built**

Federal Record of Decision

***Pre-COVID-19
schedule***

PUBLIC INVOLVEMENT



VOTER
APPROVAL

2016



PLANNING



DES

2017–2019

Alternatives development

Feb–Mar 2018:
Early scoping

Feb–Apr 2019:
Scoping

May, Oct 2019: Board
identified preferred
alternatives and other
DEIS alternatives

2019–2022

Environmental review

Spring 2021: Publish Draft EIS

DEIS public comment period

Mid 2021: Board confirms or
modifies preferred alternatives

2022: Publish Final EIS

Board selects projects
to be built

Federal Record of Decision

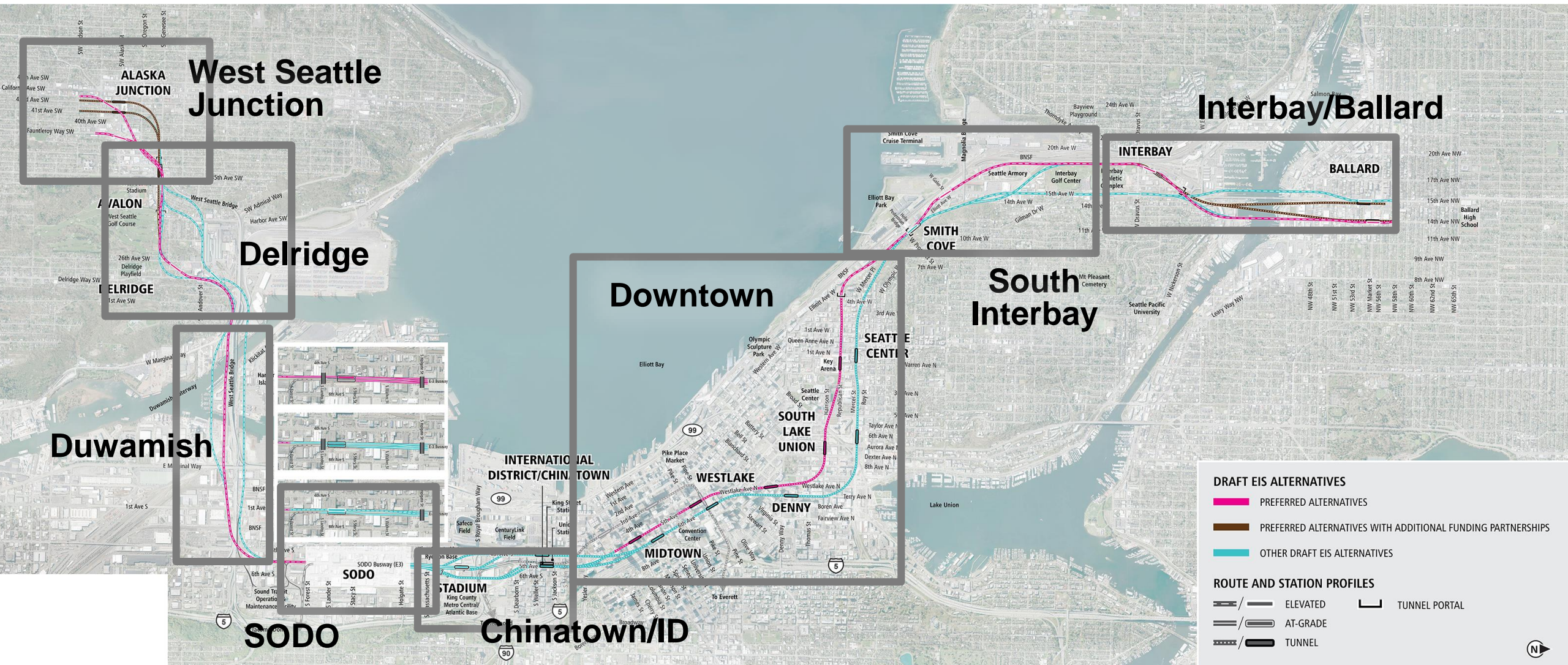
***Pre-COVID-19
schedule***



PUBLIC INVOLVEMENT

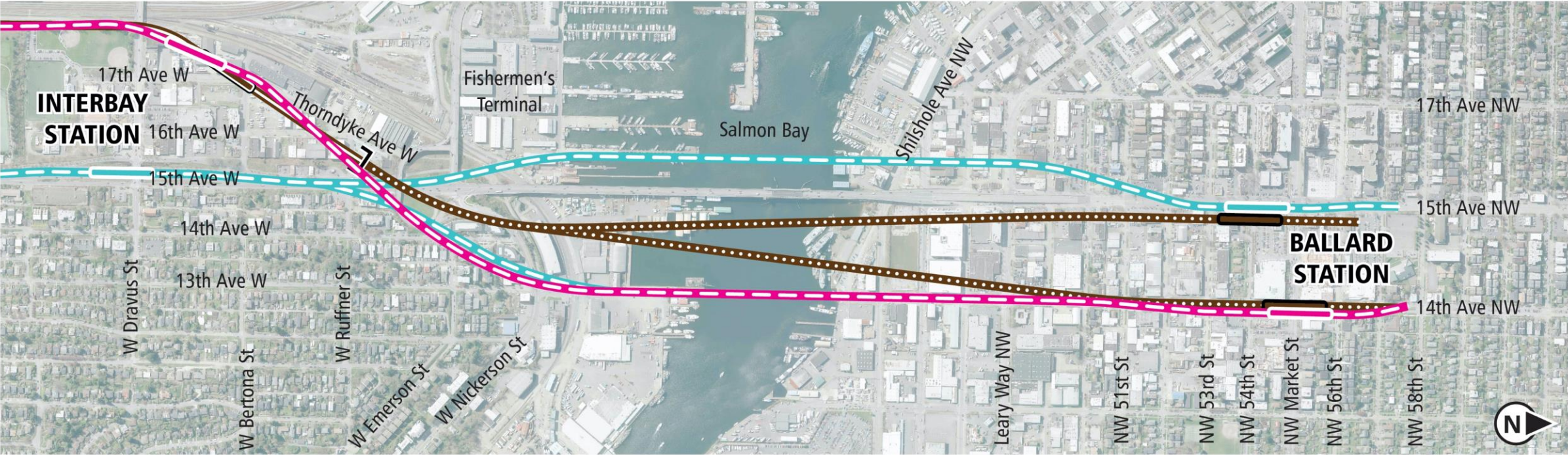
Draft EIS alternatives

Draft EIS alternatives



Interbay/Ballard segment

Draft EIS alternatives *Interbay, Ballard*



DRAFT EIS ALTERNATIVES

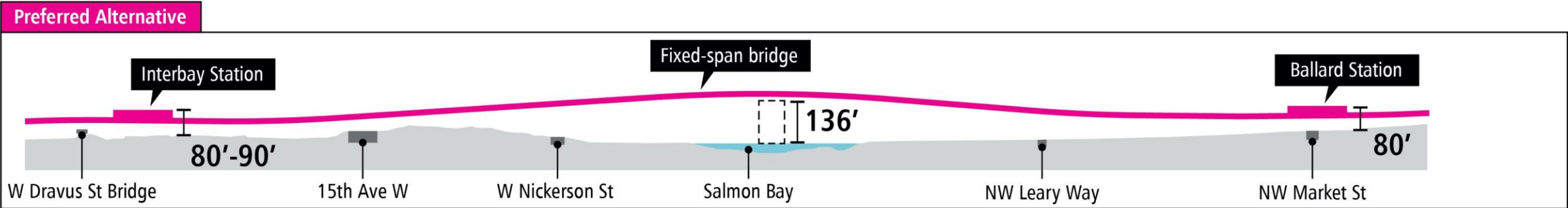
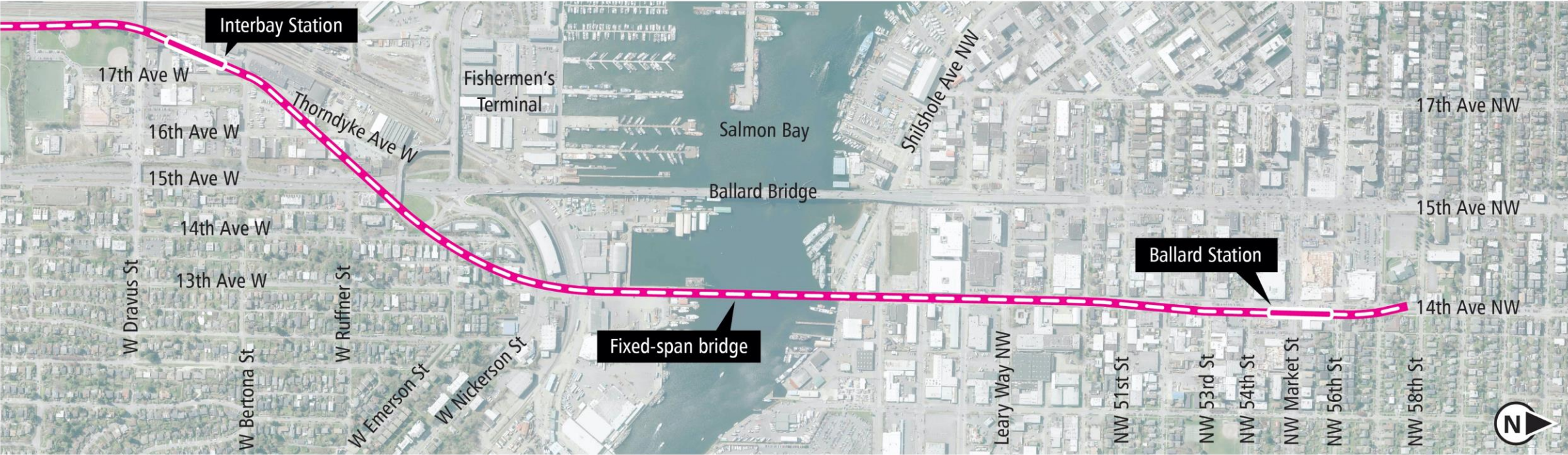
- PREFERRED ALTERNATIVES
- PREFERRED ALTERNATIVES WITH THIRD PARTY FUNDING
- OTHER DRAFT EIS ALTERNATIVES

ROUTE AND STATION PROFILES

	ELEVATED		TUNNEL PORTAL
	AT-GRADE		
	TUNNEL		

Diagrams are not to scale. All measurements are approximate and are for discussion purposes only.

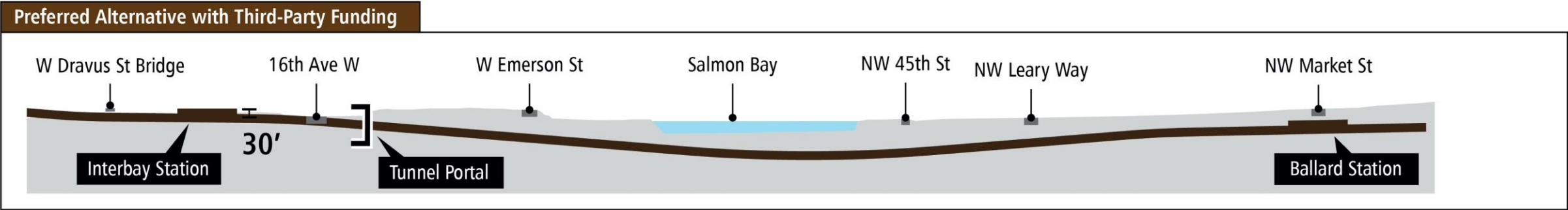
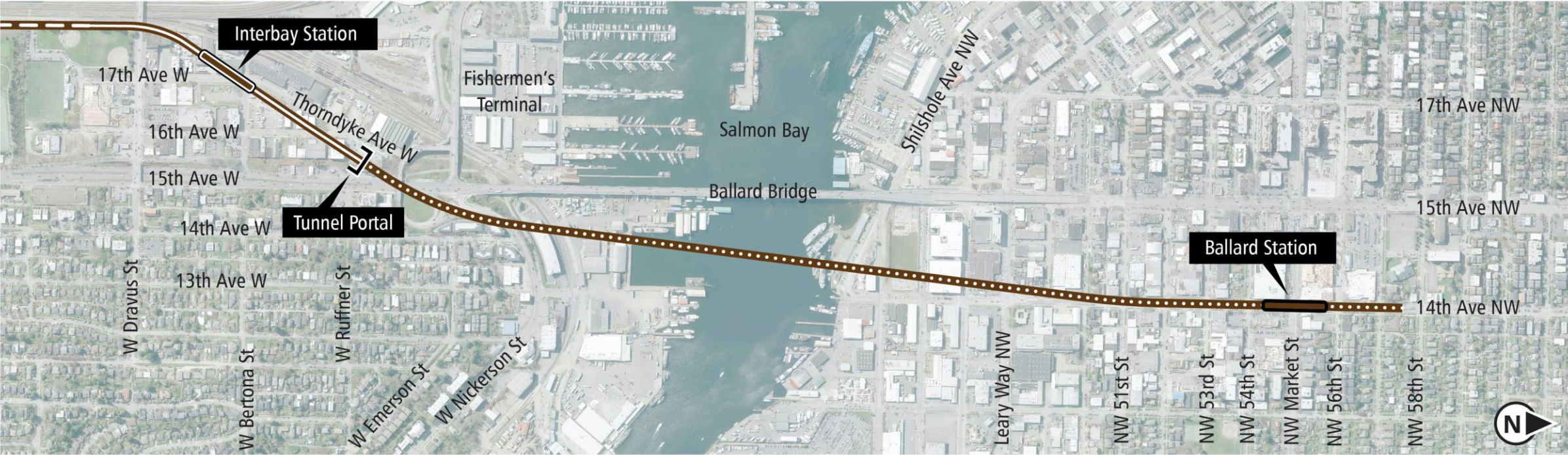
Draft EIS alternatives *Interbay, Ballard*



Elevated 14th Avenue (IBB-1a)

Diagrams are not to scale. All measurements are approximate and are for discussion purposes only.

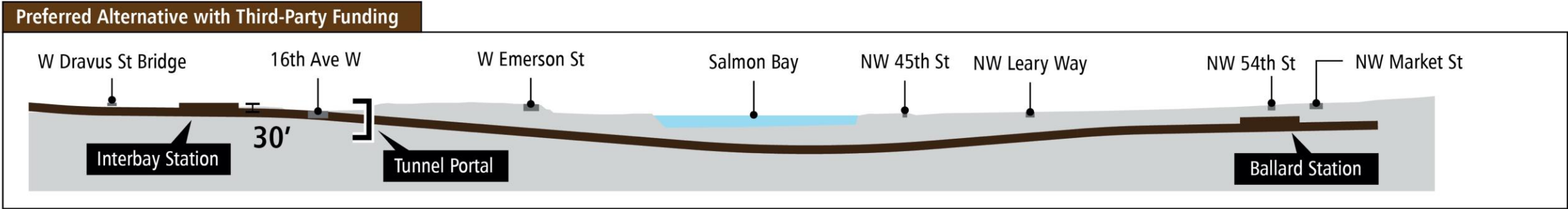
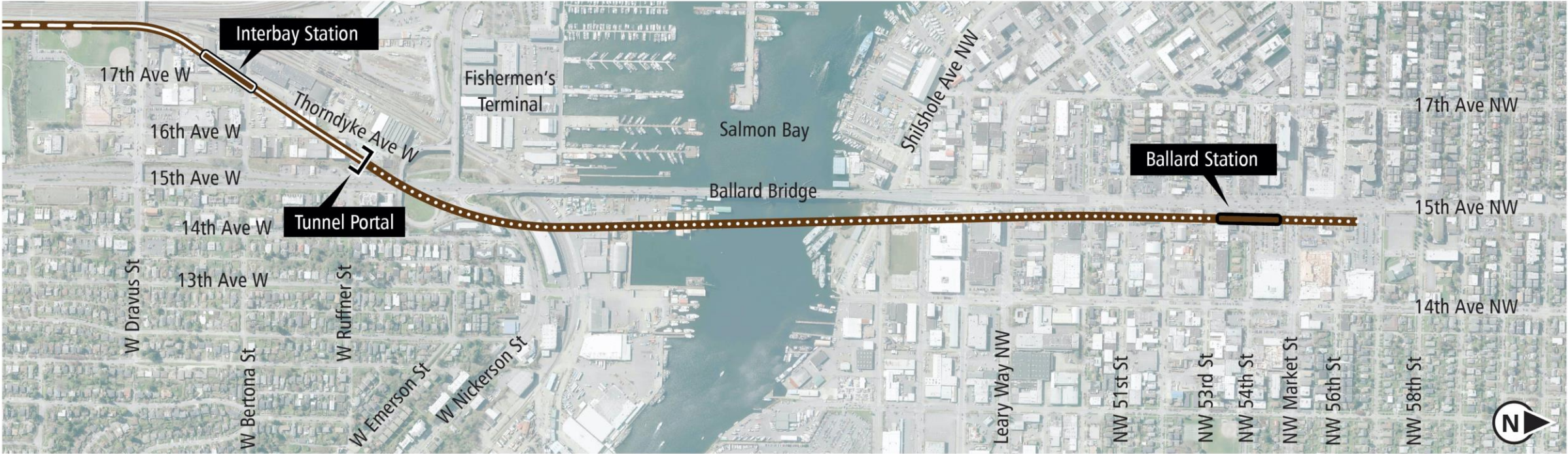
Draft EIS alternatives *Interbay, Ballard*



Tunnel 14th Avenue (IBB-2a)

Diagrams are not to scale. All measurements are approximate and are for discussion purposes only.

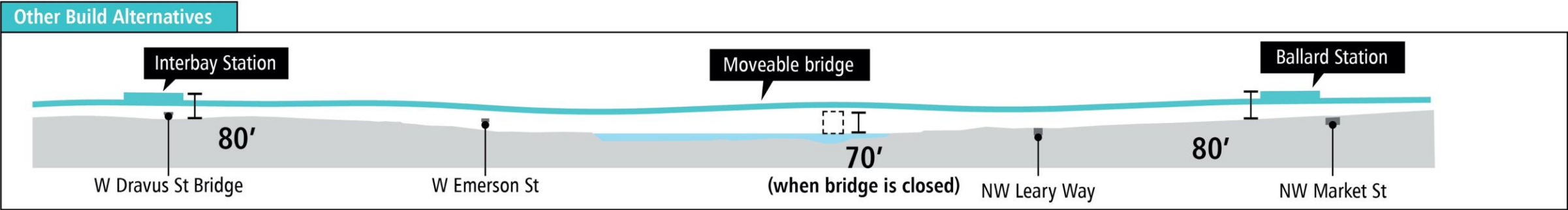
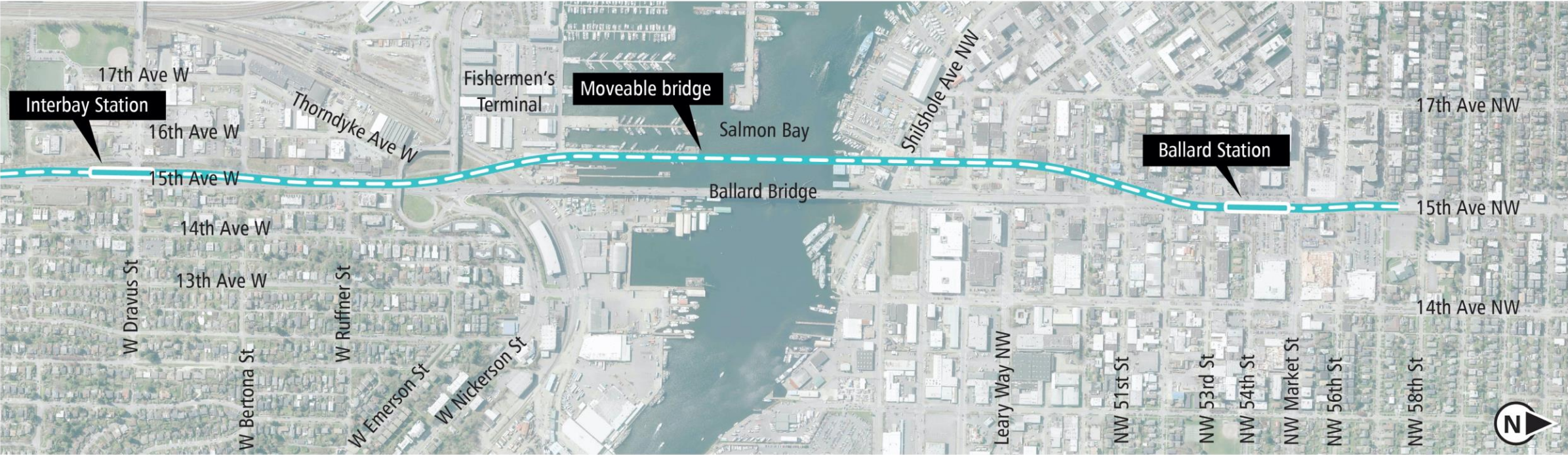
Draft EIS alternatives *Interbay, Ballard*



Tunnel 15th Avenue Station Option (IBB-2b)

Diagrams are not to scale. All measurements are approximate and are for discussion purposes only.

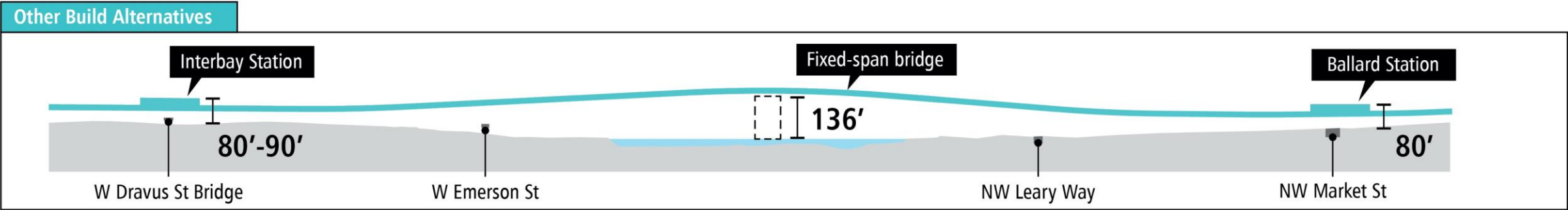
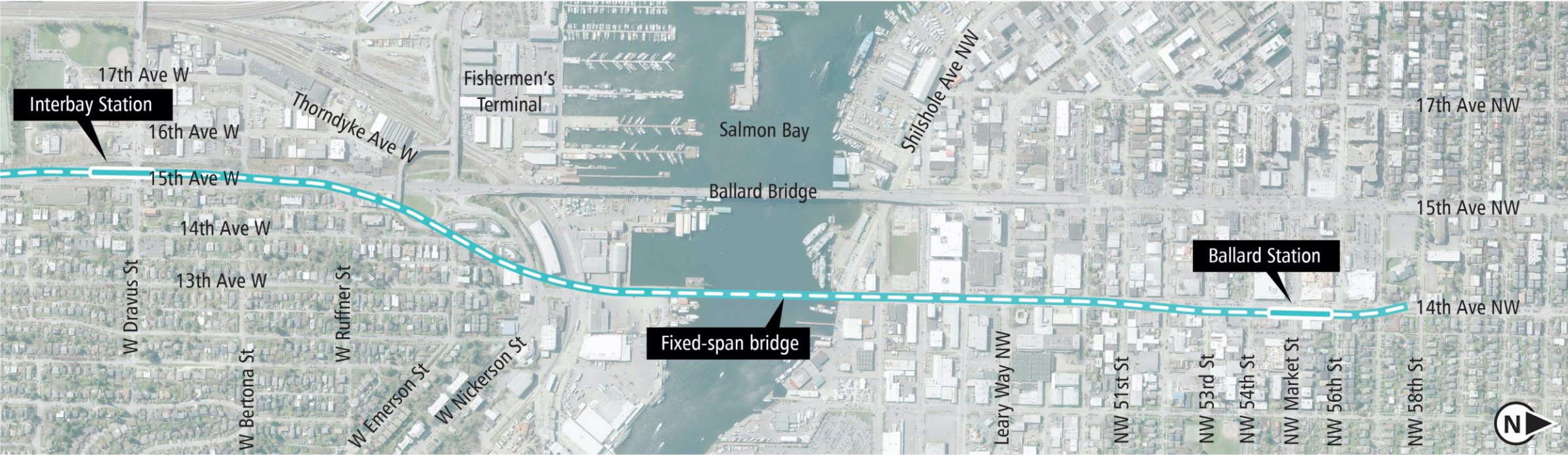
Draft EIS alternatives *Interbay, Ballard*



Elevated 15th Avenue (IBB-3)

Diagrams are not to scale. All measurements are approximate and are for discussion purposes only.

Draft EIS alternatives *Interbay, Ballard*

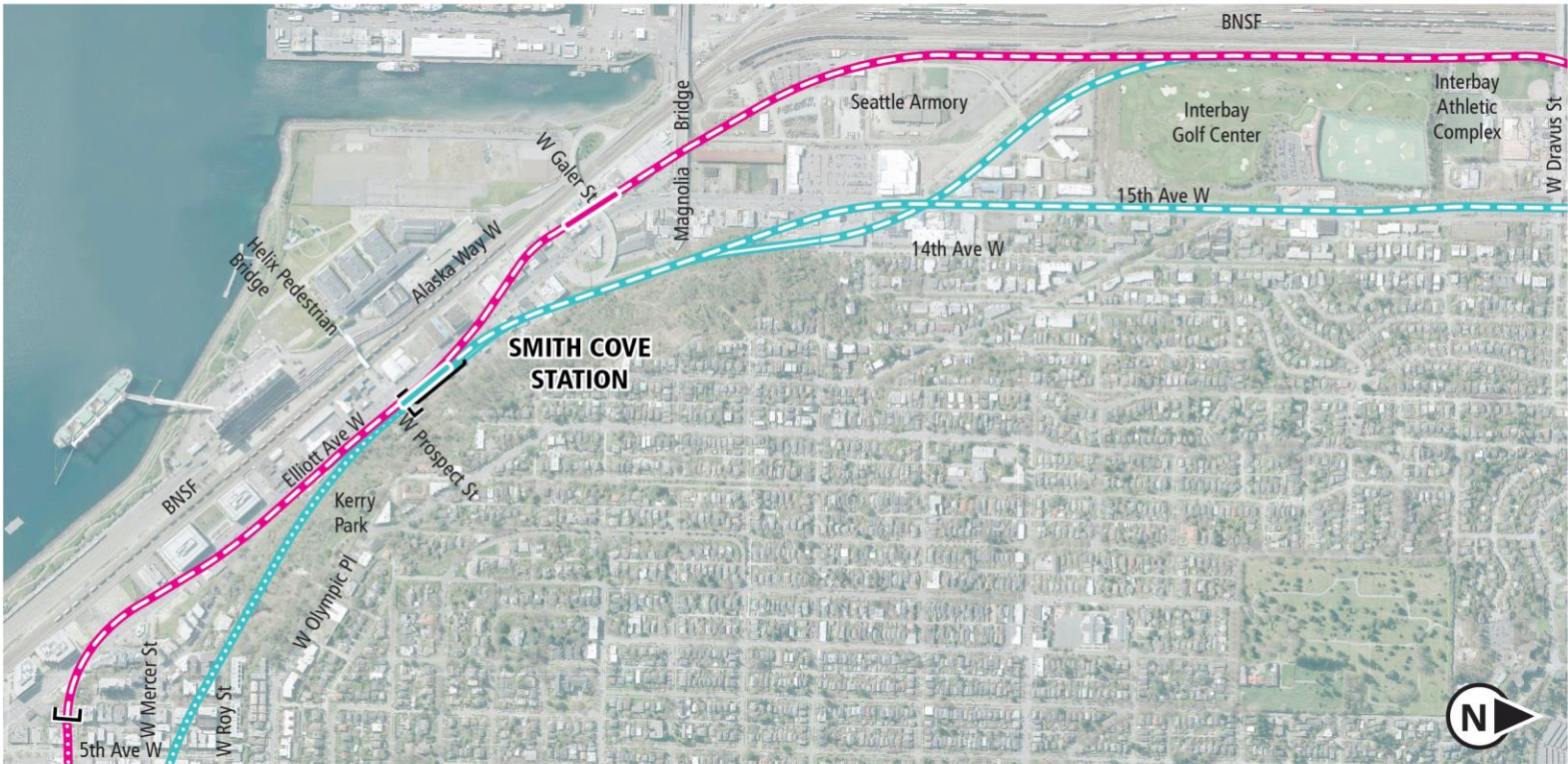


Elevated 14th Avenue Alignment Option (from Prospect Street Station/15th Avenue) (IBB-1b)




Diagrams are not to scale. All measurements are approximate and are for discussion purposes only.

South Interbay segment

Draft EIS alternatives South Interbay



DRAFT EIS ALTERNATIVES

-  PREFERRED ALTERNATIVES
-  PREFERRED ALTERNATIVES WITH THIRD PARTY FUNDING
-  OTHER DRAFT EIS ALTERNATIVES

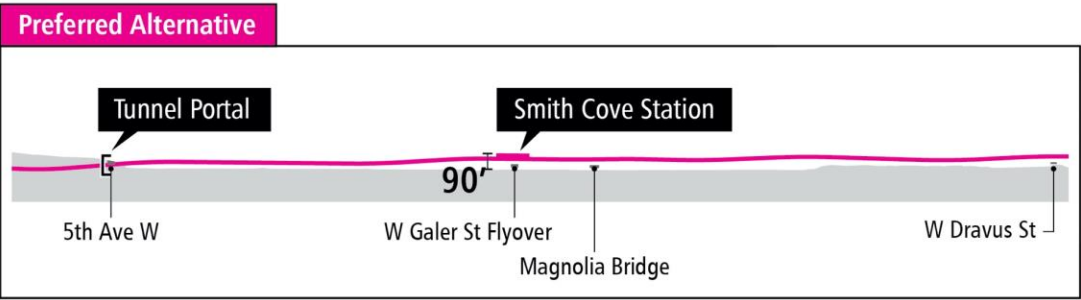
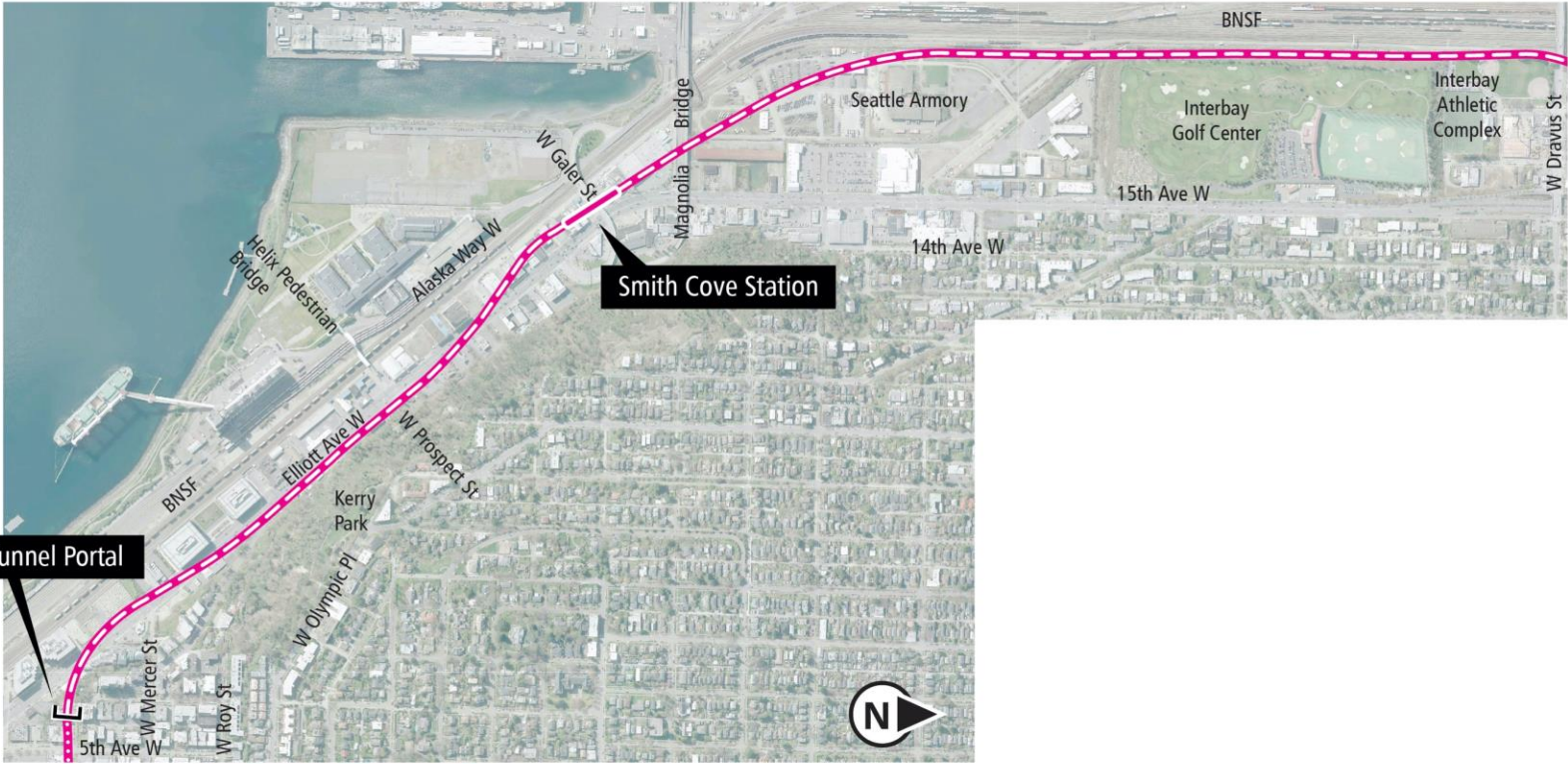
ROUTE AND STATION PROFILES

-  ELEVATED
-  AT-GRADE
-  TUNNEL
-  TUNNEL PORTAL



Diagrams are not to scale. All measurements are approximate and are for discussion purposes only.

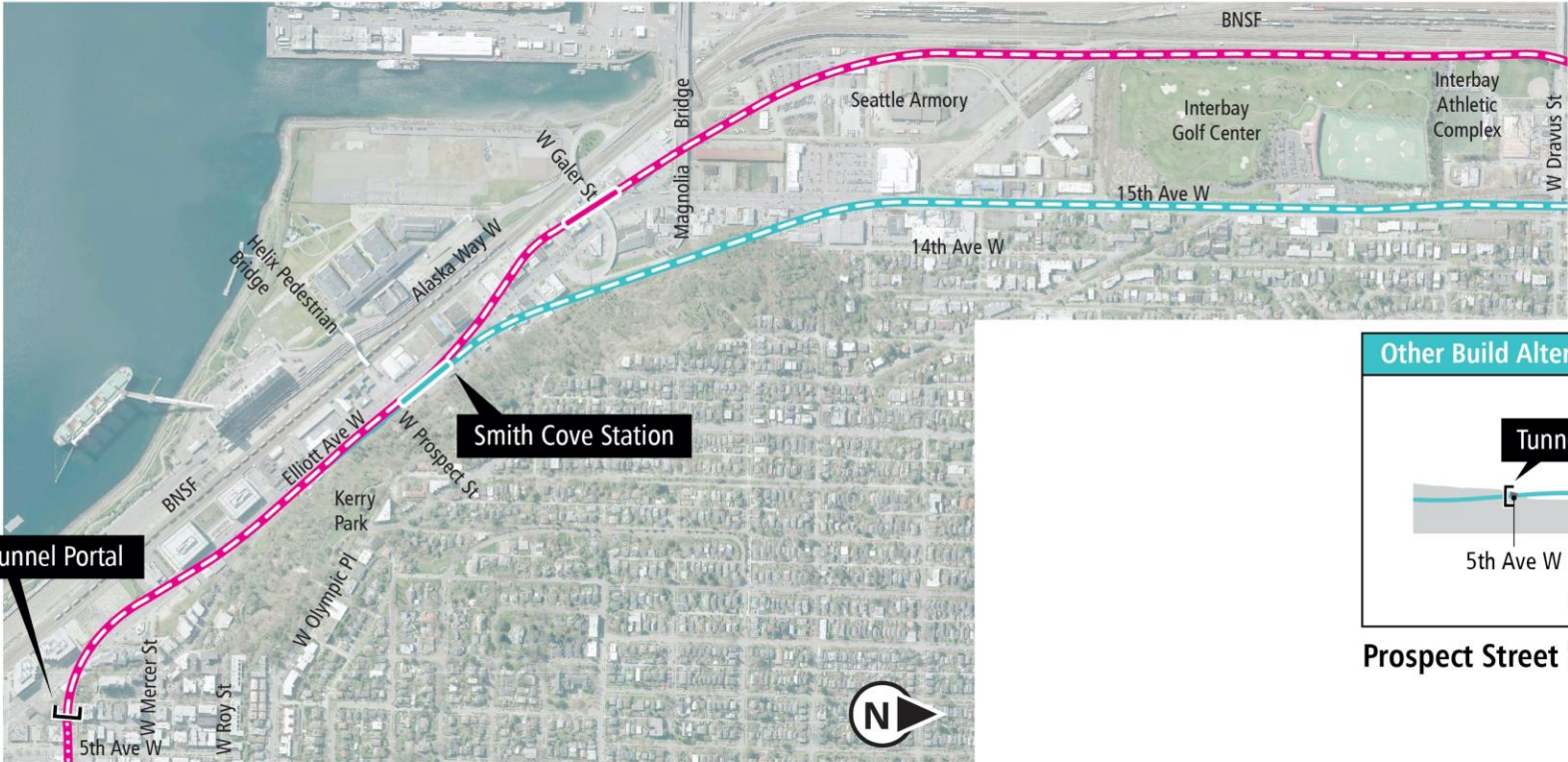
Draft EIS alternatives South Interbay



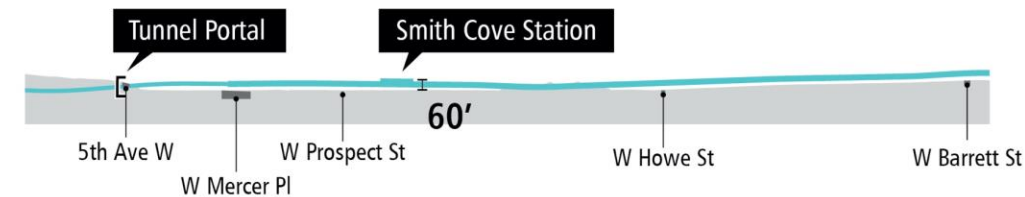
Galer Street Station/Central Interbay (SIB-1)

Diagrams are not to scale. All measurements are approximate and are for discussion purposes only.

Draft EIS alternatives South Interbay

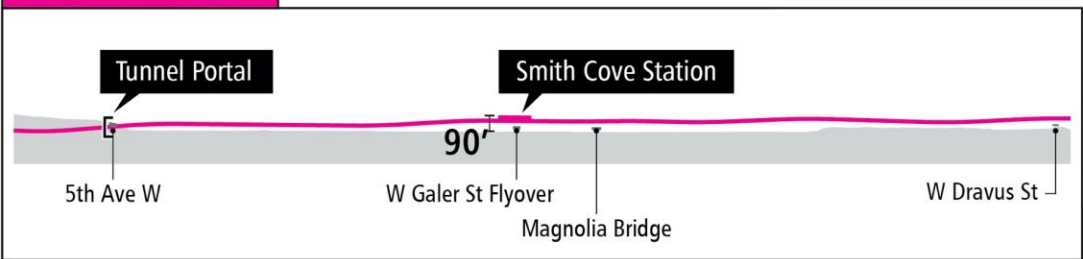


Other Build Alternatives



Prospect Street Station/15th Avenue (SIB-2)

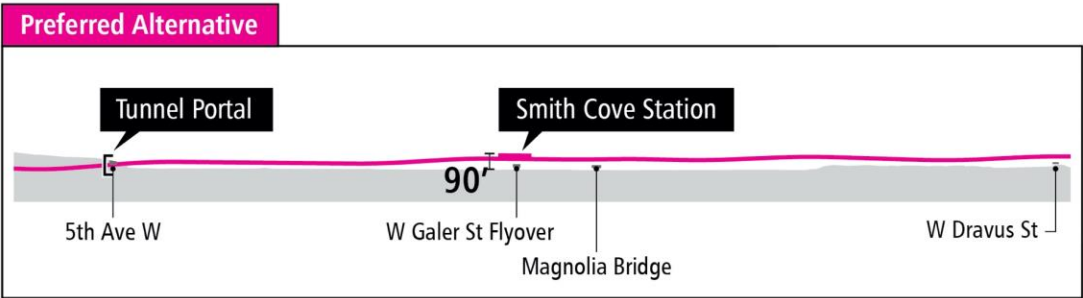
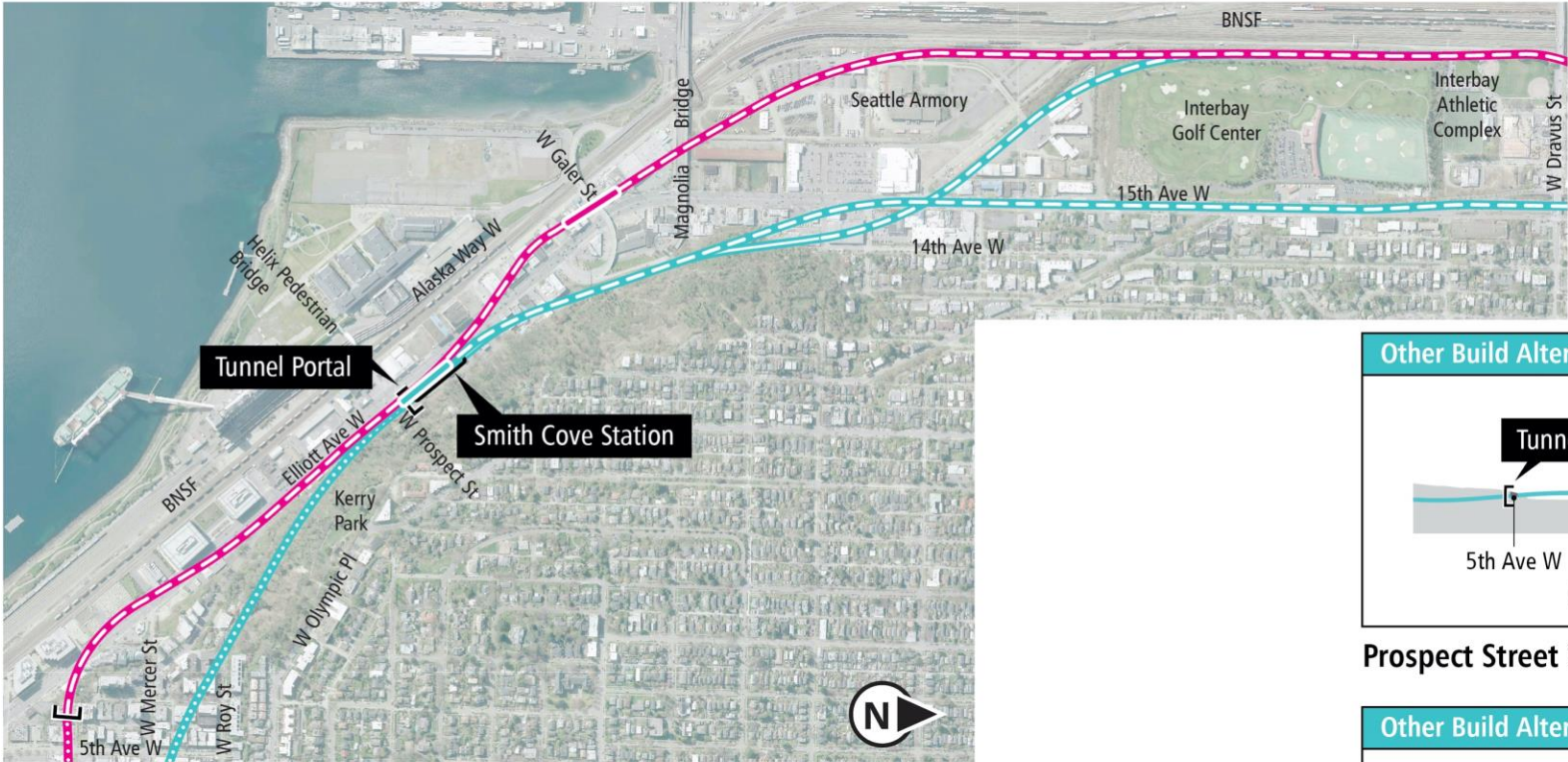
Preferred Alternative



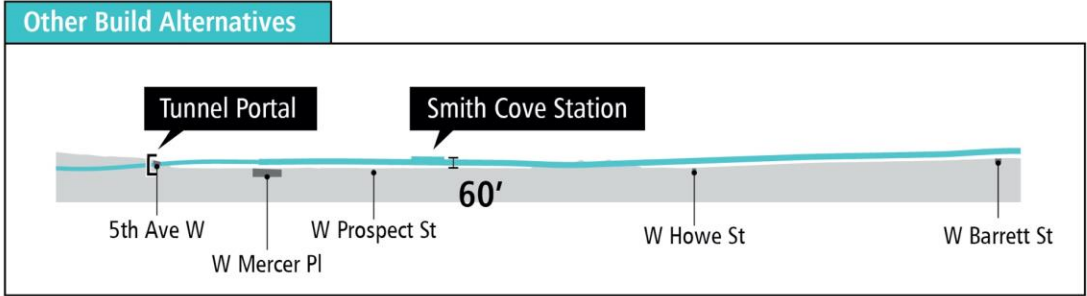
Galer Street Station/Central Interbay (SIB-1)

Diagrams are not to scale. All measurements are approximate and are for discussion purposes only.

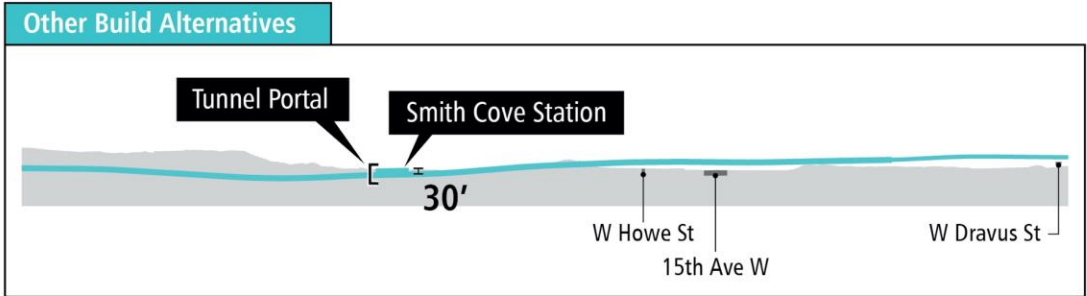
Draft EIS alternatives South Interbay



Galer Street Station/Central Interbay (SIB-1)



Prospect Street Station/15th Avenue (SIB-2)

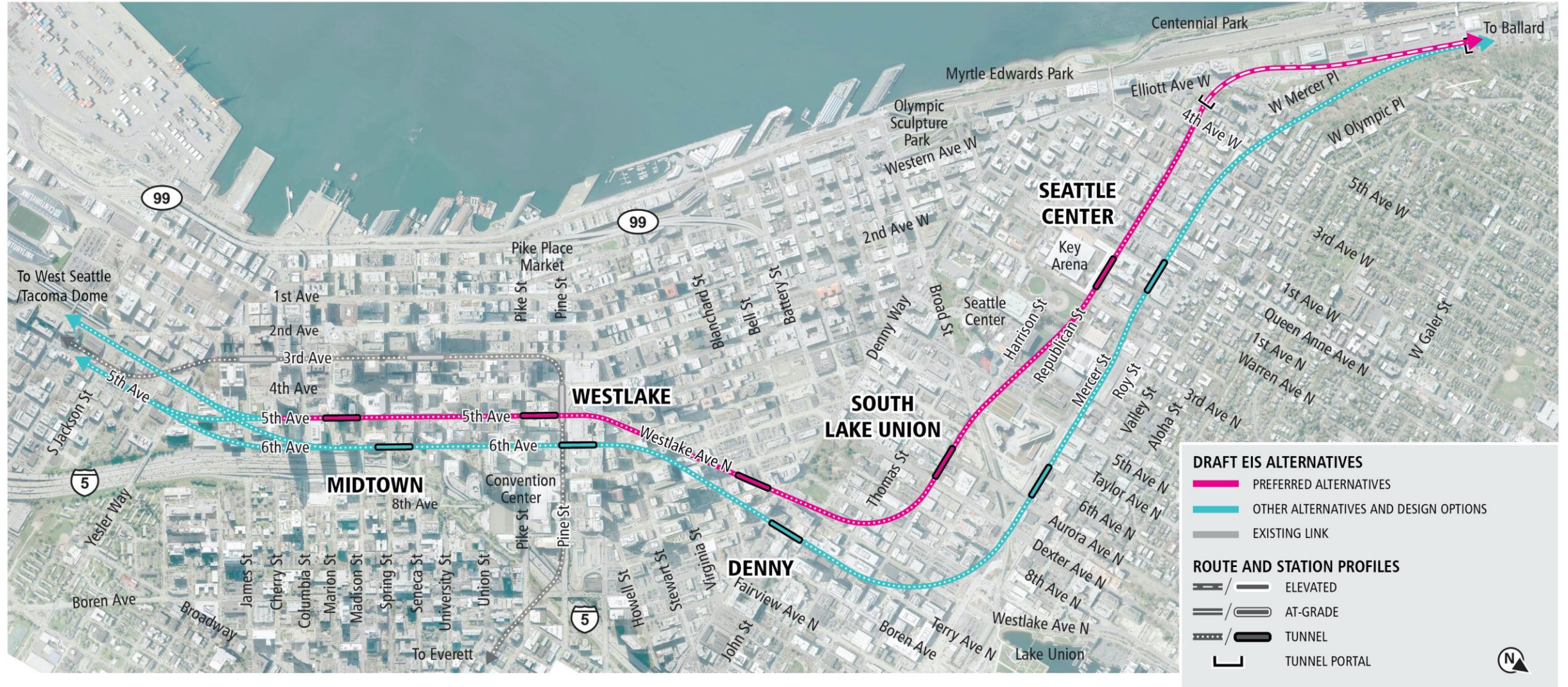


Prospect Street Station/Central Interbay (SIB-3)

Diagrams are not to scale. All measurements are approximate and are for discussion purposes only.

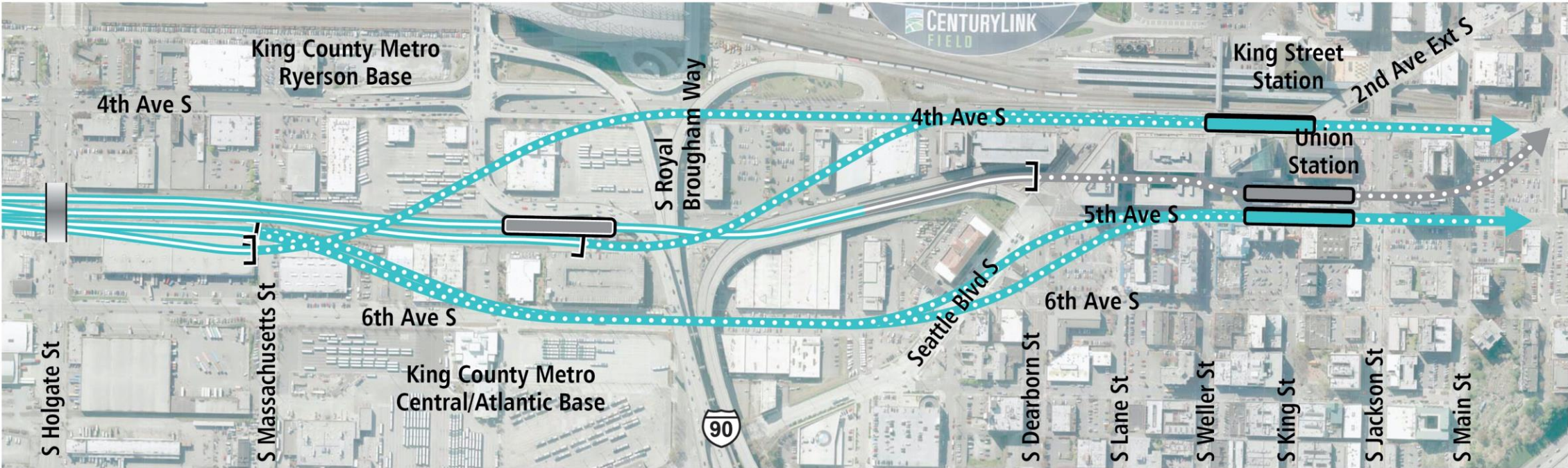
Downtown segment

Draft EIS alternatives Downtown



CID segment

Draft EIS alternatives Chinatown-International District



DRAFT EIS ALTERNATIVES

OTHER DRAFT EIS ALTERNATIVES

ROUTE AND STATION PROFILES

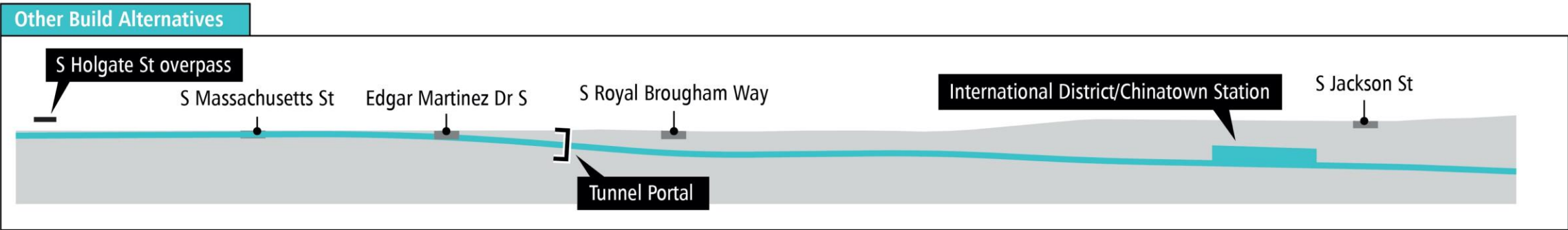
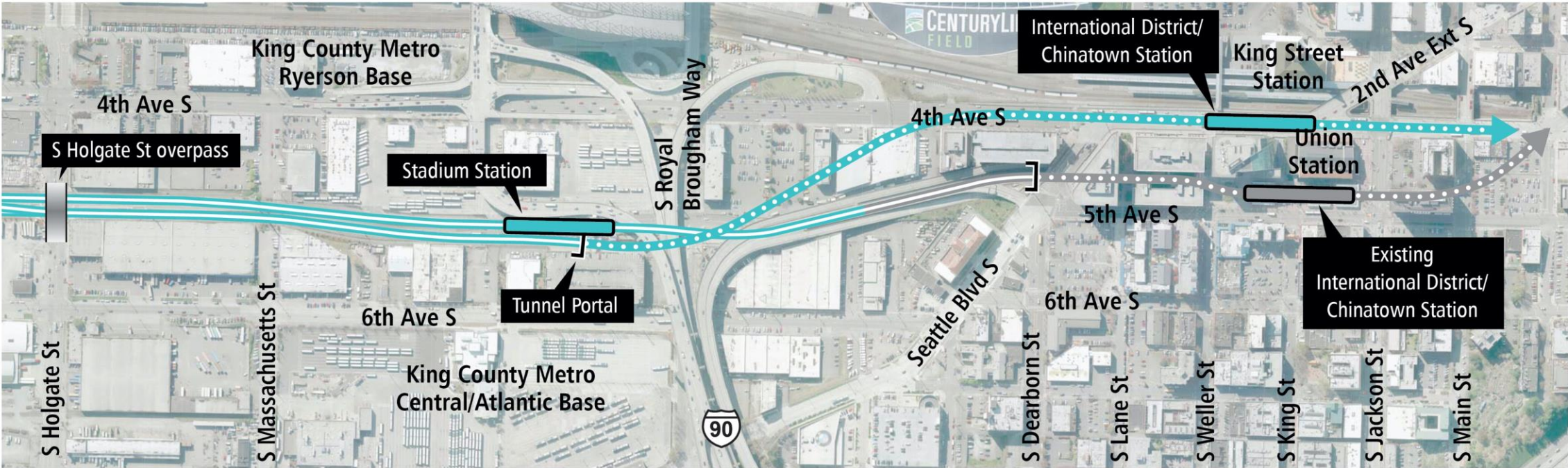
ELEVATED
AT-GRADE
TUNNEL

TUNNEL PORTAL

N

Diagrams are not to scale. All measurements are approximate and are for discussion purposes only.

Draft EIS alternatives Chinatown-International District



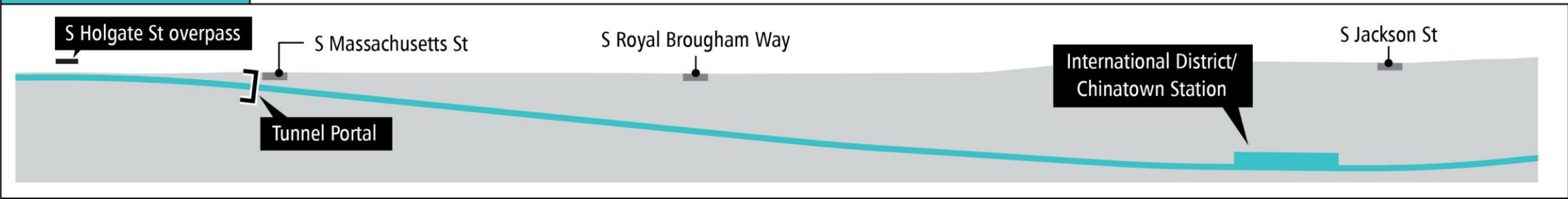
4th Avenue Shallow (CID-1a)

Diagrams are not to scale. All measurements are approximate and are for discussion purposes only.

Draft EIS alternatives Chinatown-International District



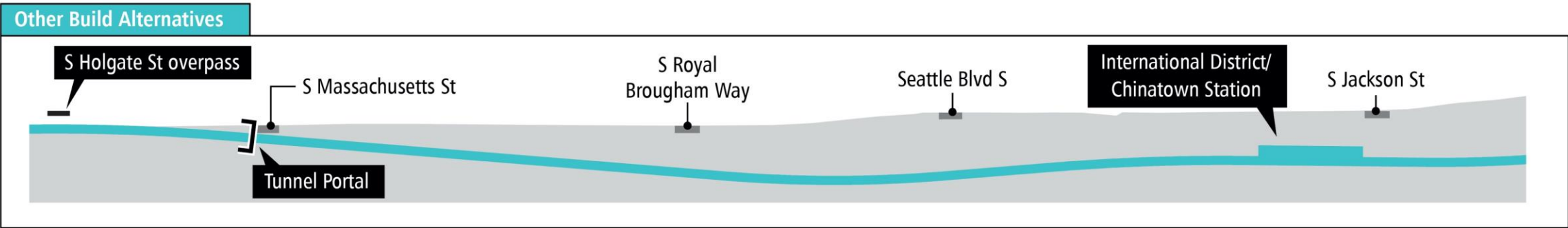
Other Build Alternatives



4th Avenue Deep Station Option (CID-1b)

Diagrams are not to scale. All measurements are approximate and are for discussion purposes only.

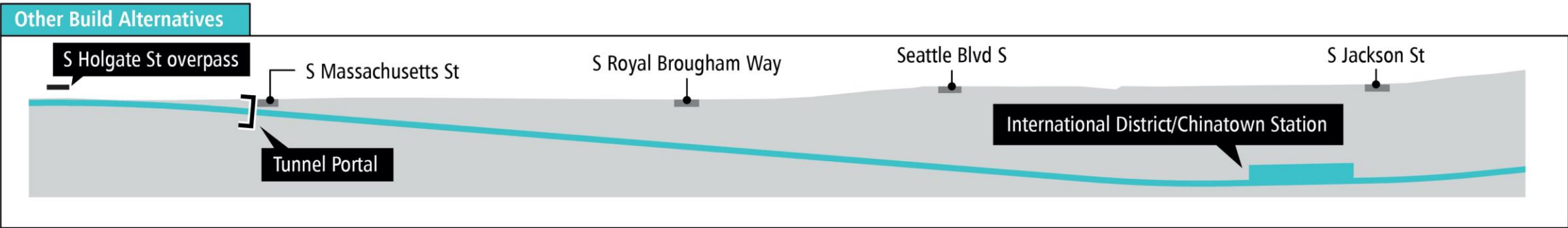
Draft EIS alternatives Chinatown-International District



5th Avenue Shallow (CID-2a)

Diagrams are not to scale. All measurements are approximate and are for discussion purposes only.

Draft EIS alternatives Chinatown-International District

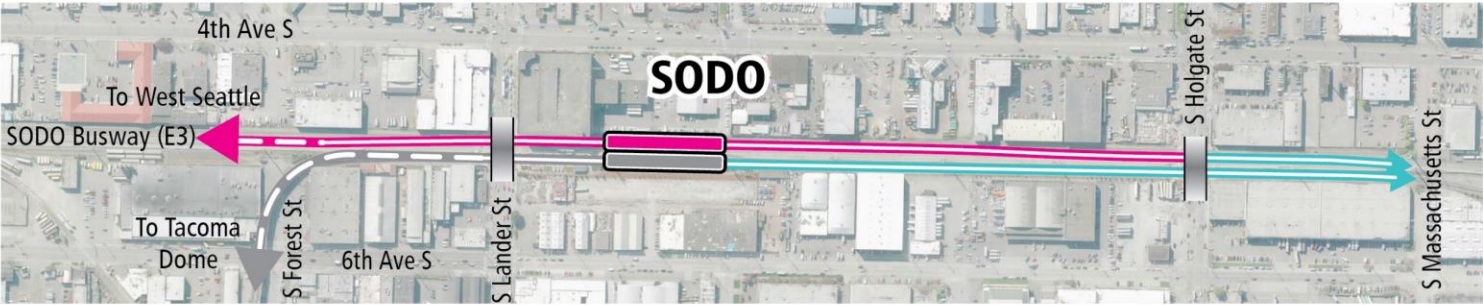


5th Avenue Deep Station Option (CID-2b)

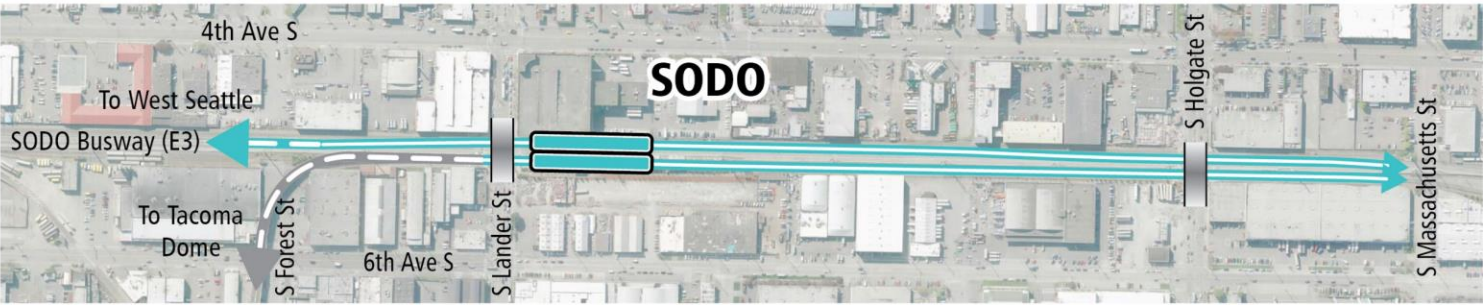
Diagrams are not to scale. All measurements are approximate and are for discussion purposes only.

SODO segment

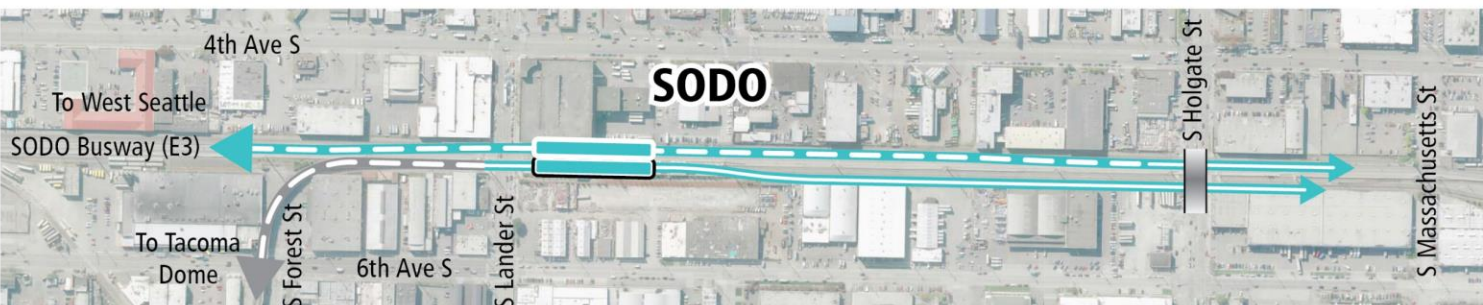
Draft EIS alternatives SODO



Preferred Alternative



Other Draft EIS Alternative



Other Draft EIS Alternative

DRAFT EIS ALTERNATIVES

- PREFERRED ALTERNATIVES
- OTHER DRAFT EIS ALTERNATIVES

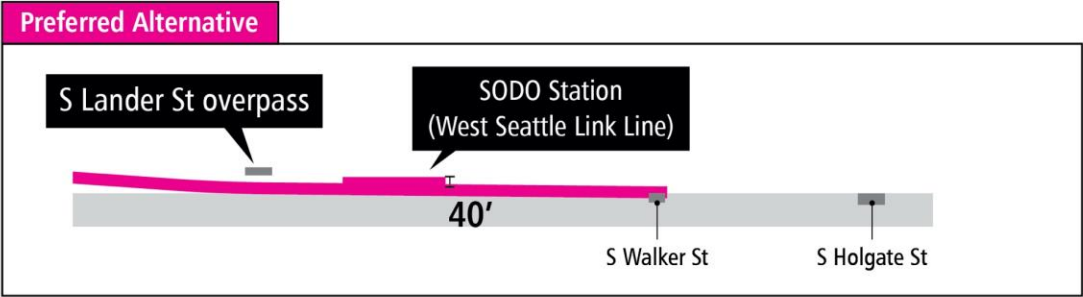
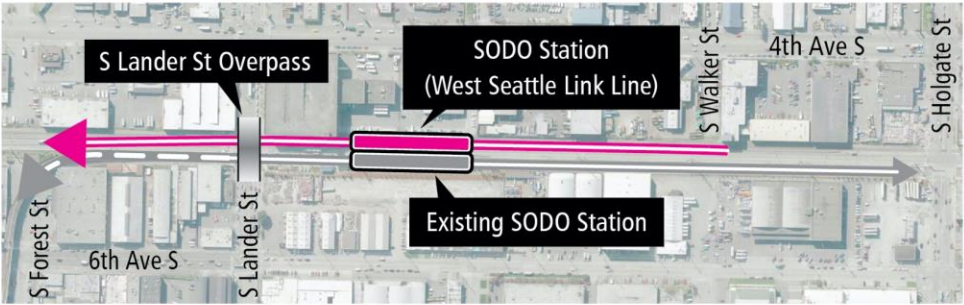
ROUTE AND STATION PROFILES

- ELEVATED
- AT-GRADE
- TUNNEL
- TUNNEL PORTAL
- STREET OVERPASS



Diagrams are not to scale. All measurements are approximate and are for discussion purposes only.

Draft EIS alternatives SODO

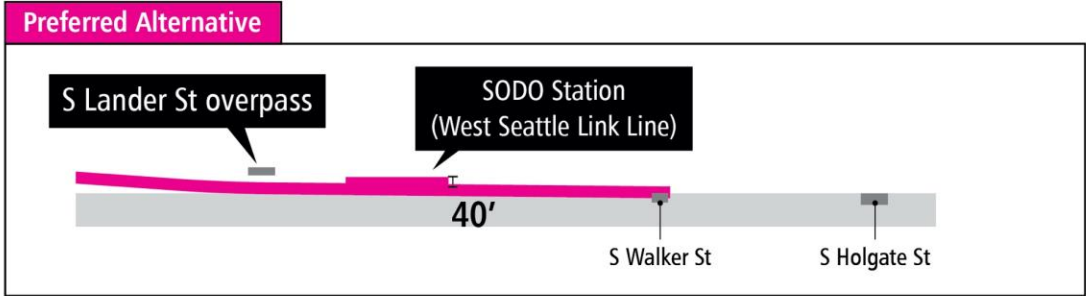
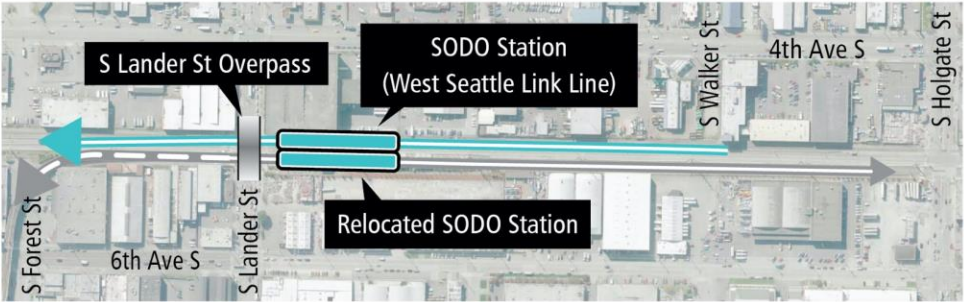
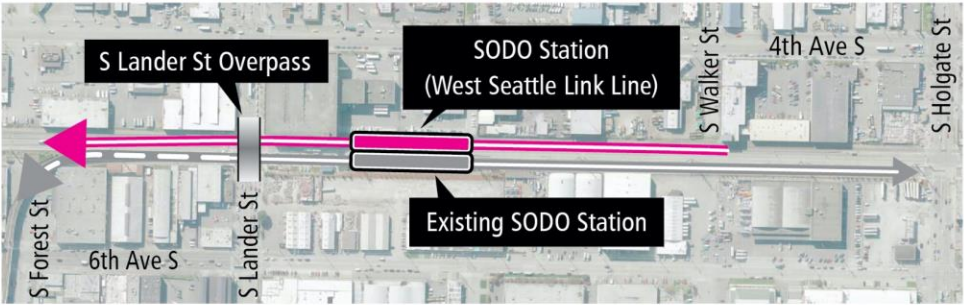


At-Grade (SODO-1a) - West Seattle Link Extension

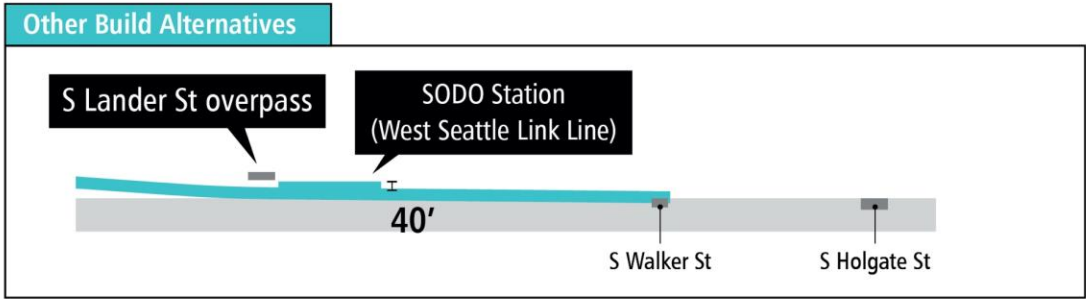
Diagrams are not to scale. All measurements are approximate and are for discussion purposes only.



Draft EIS alternatives SODO



At-Grade (SODO-1a) - West Seattle Link Extension

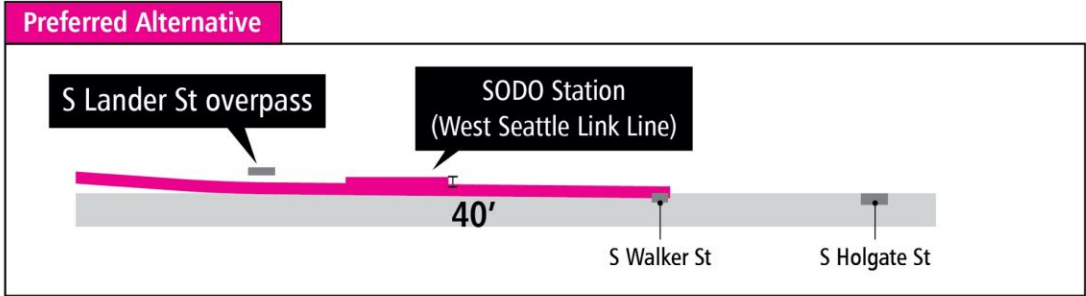
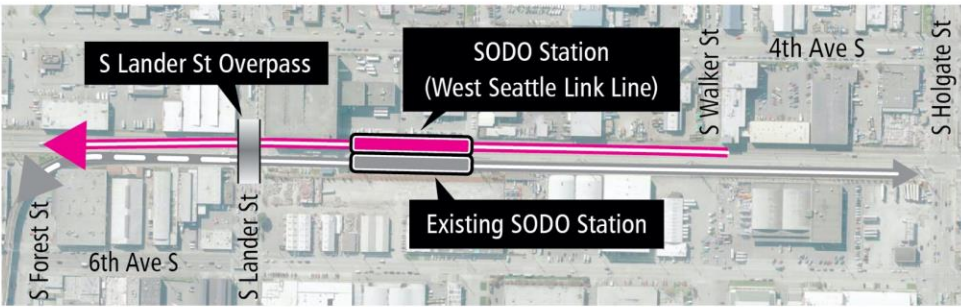


At-Grade South Station Option (SODO-1b) - West Seattle Link Extension

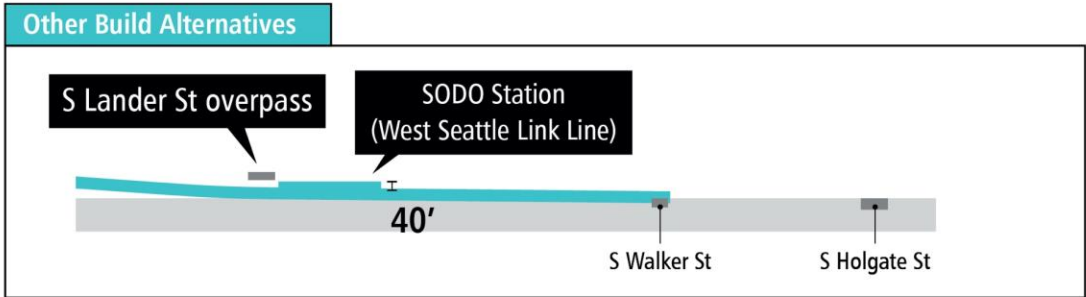
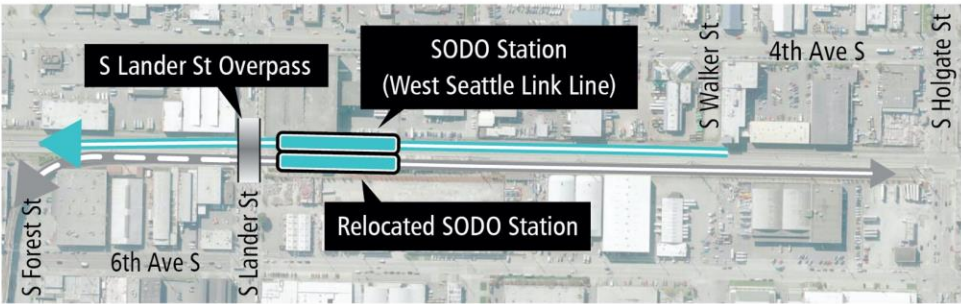
Diagrams are not to scale. All measurements are approximate and are for discussion purposes only.



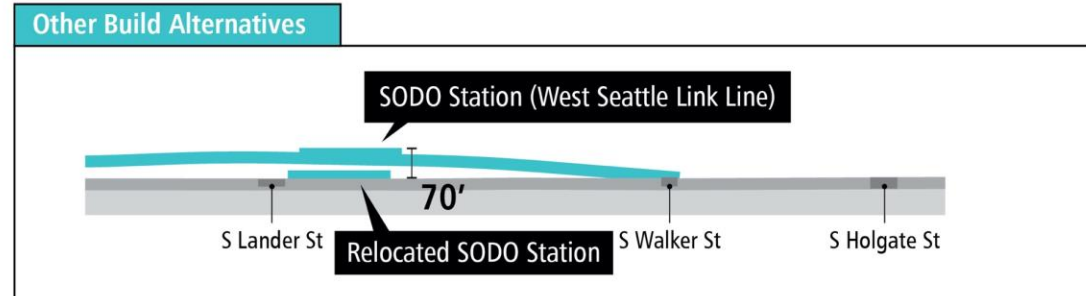
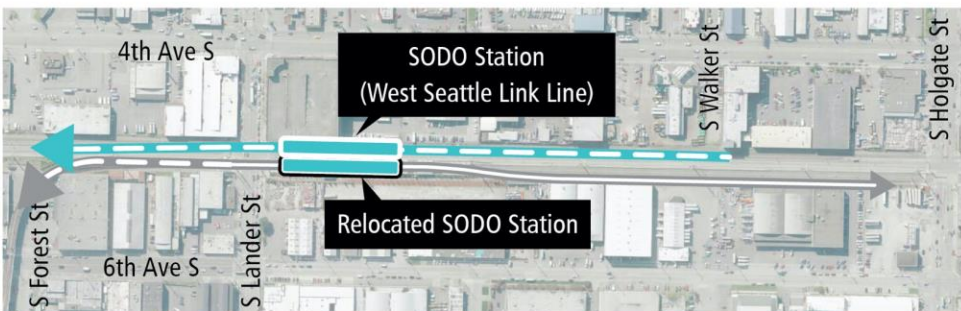
Draft EIS alternatives SODO



At-Grade (SODO-1a) - West Seattle Link Extension



At-Grade South Station Option (SODO-1b) - West Seattle Link Extension

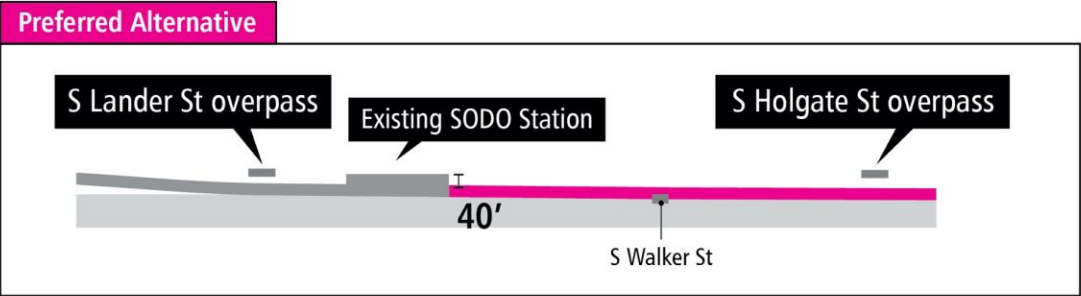
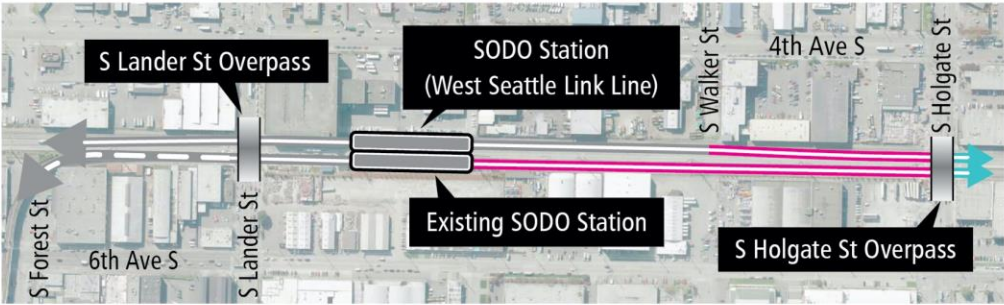


Mixed Profile (SODO-2) - West Seattle Link Extension

Diagrams are not to scale. All measurements are approximate and are for discussion purposes only.



Draft EIS alternatives SODO

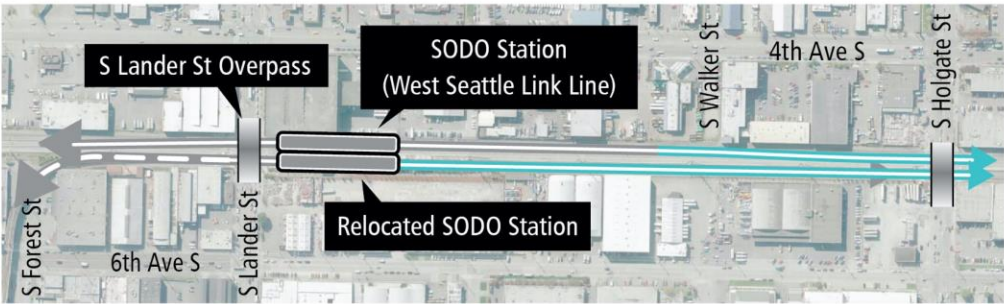
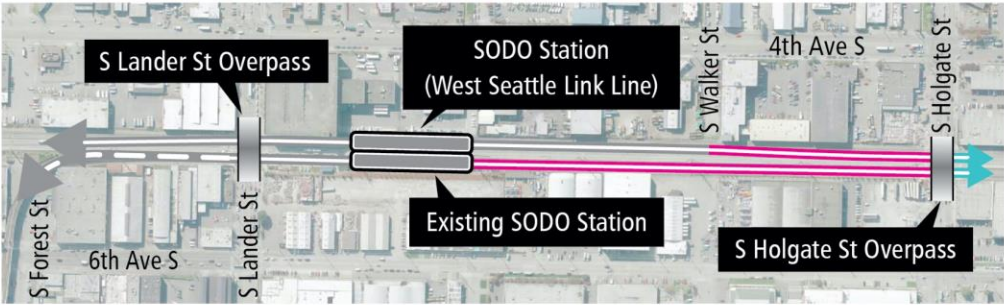


At-Grade (SODO-1a) - Ballard Link Extension

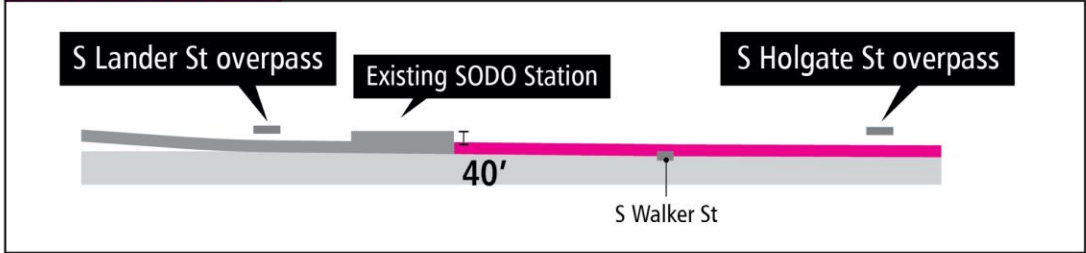
Diagrams are not to scale. All measurements are approximate and are for discussion purposes only.



Draft EIS alternatives SODO

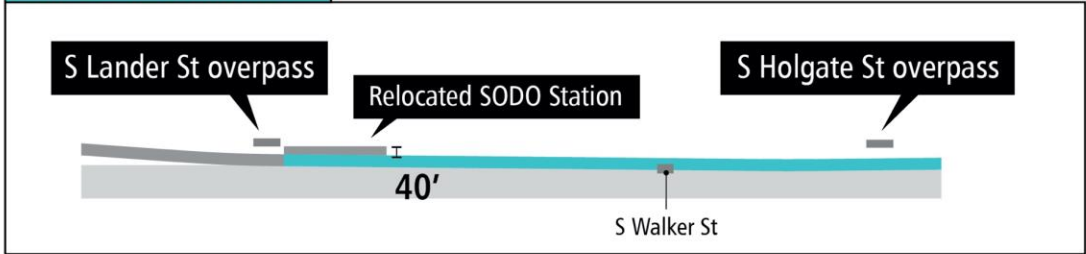


Preferred Alternative



At-Grade (SODO-1a) - Ballard Link Extension

Other Build Alternatives

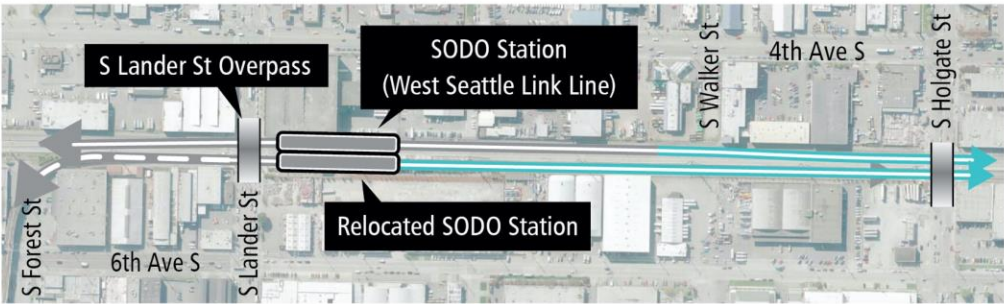
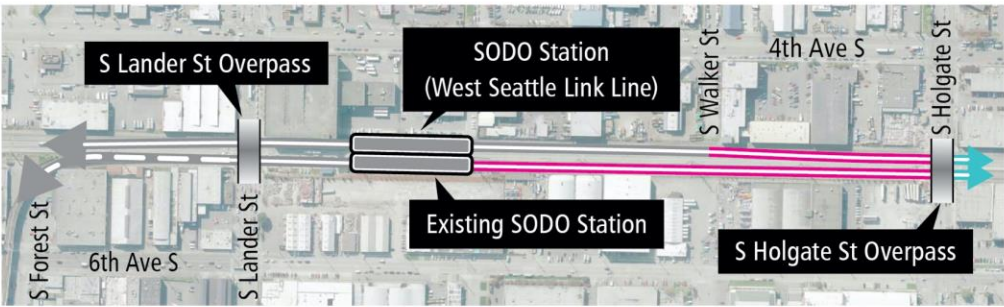


At-Grade South Station Option (SODO-1b) - Ballard Link Extension

Diagrams are not to scale. All measurements are approximate and are for discussion purposes only.

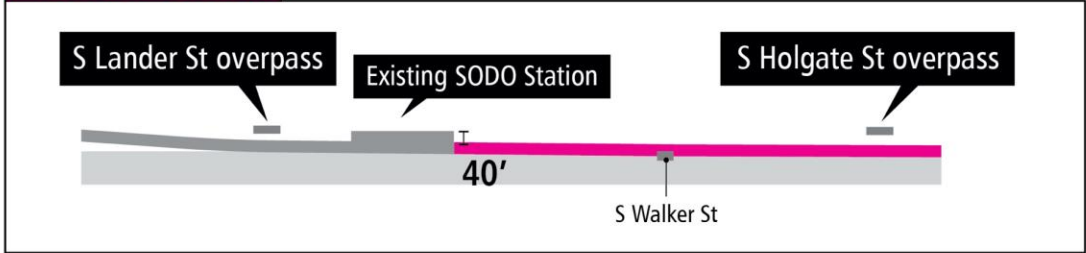


Draft EIS alternatives SODO



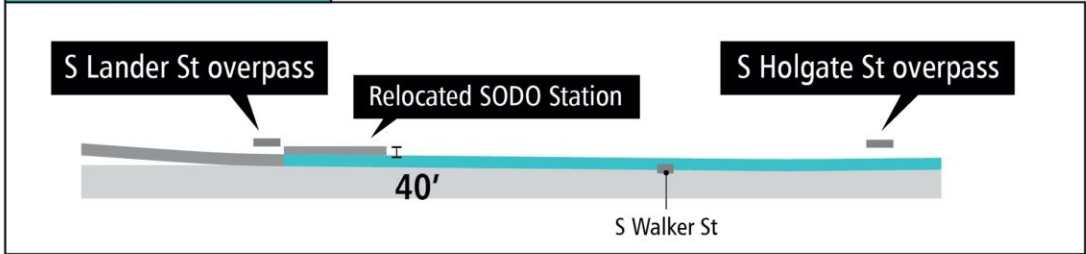
Diagrams are not to scale. All measurements are approximate and are for discussion purposes only.

Preferred Alternative



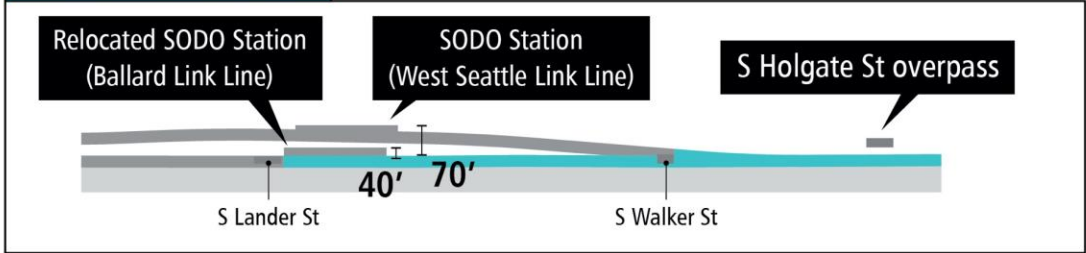
At-Grade (SODO-1a) - Ballard Link Extension

Other Build Alternatives



At-Grade South Station Option (SODO-1b) - Ballard Link Extension

Other Build Alternatives

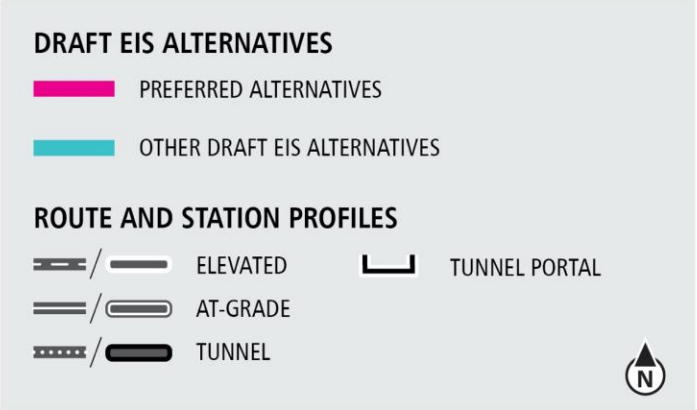
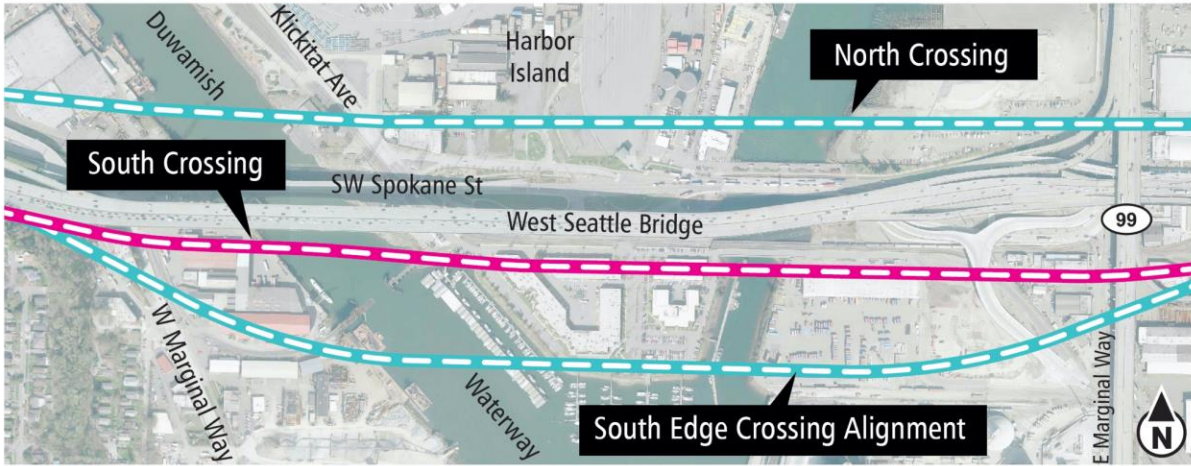


Mixed Profile (SODO-2) - Ballard Link Extension



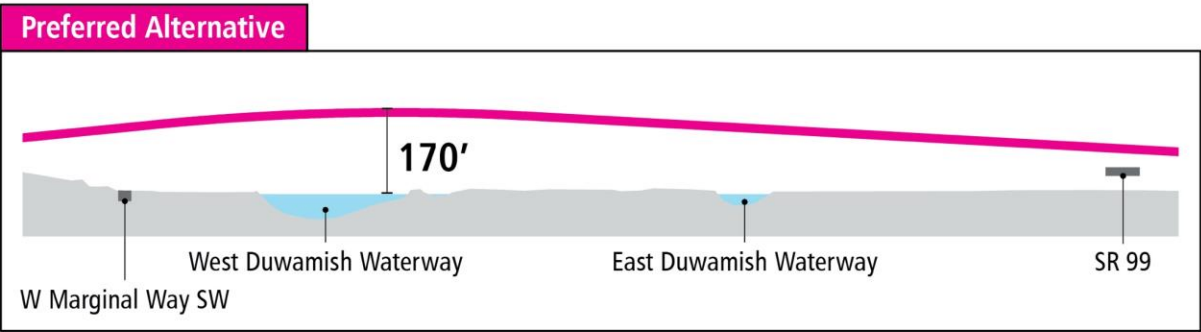
Duwamish segment

Draft EIS alternatives Duwamish



Diagrams are not to scale.
All measurements are approximate and are for discussion purposes only.

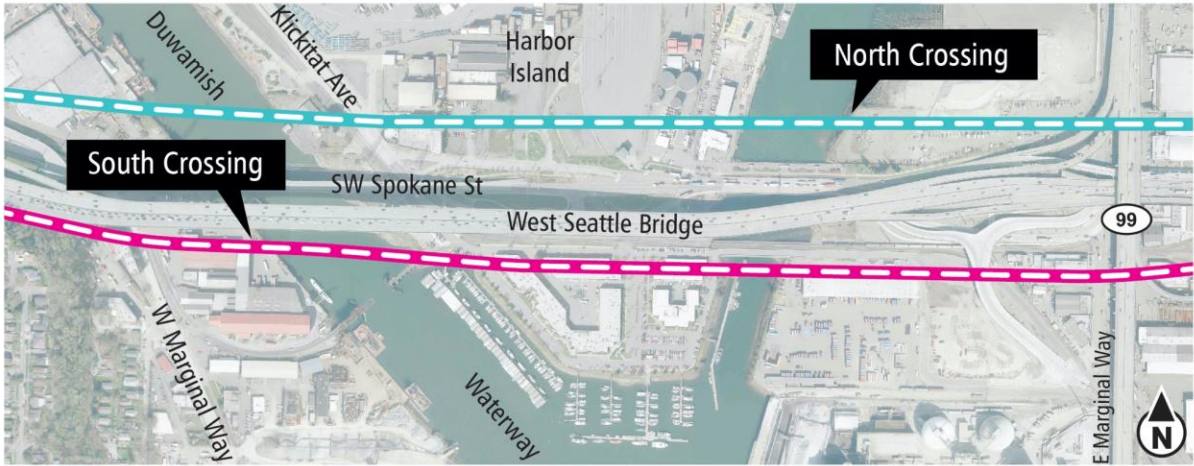
Draft EIS alternatives Duwamish



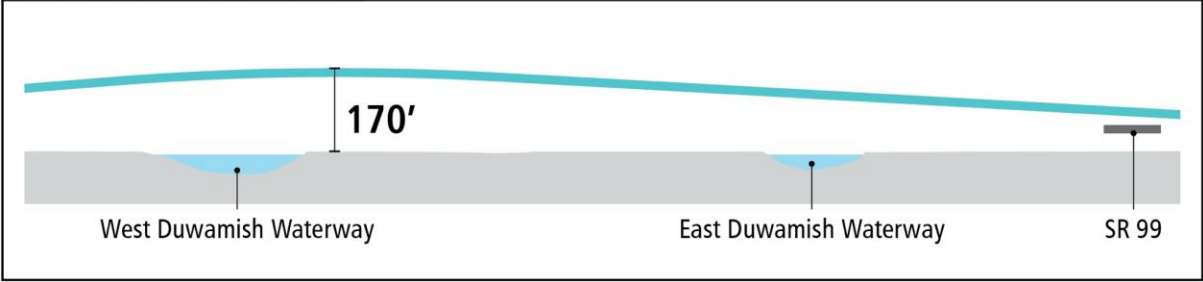
South Crossing (DUW-1a)

Diagrams are not to scale.
All measurements are approximate and are for discussion purposes only.

Draft EIS alternatives Duwamish



Other Build Alternatives



North Crossing (DUW-2)

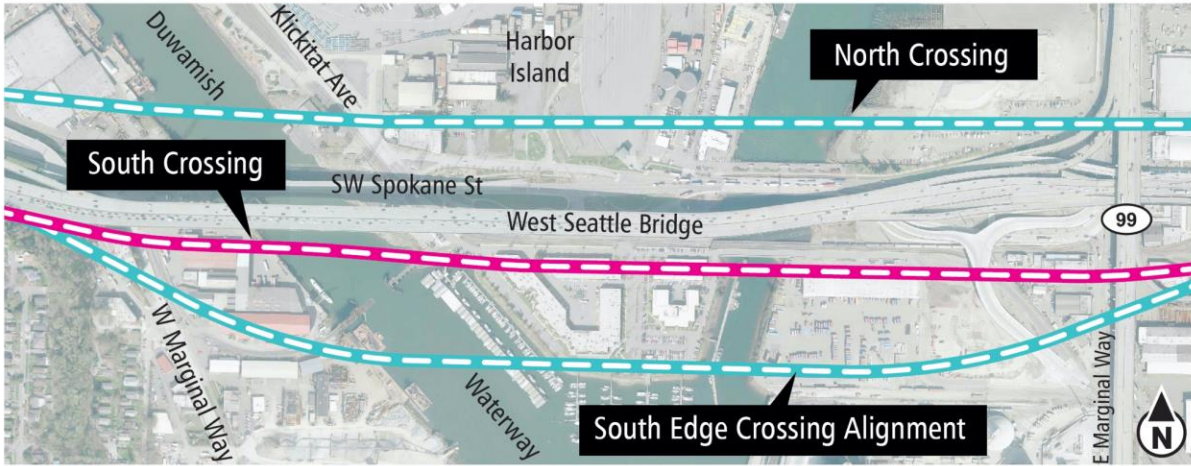
Preferred Alternative



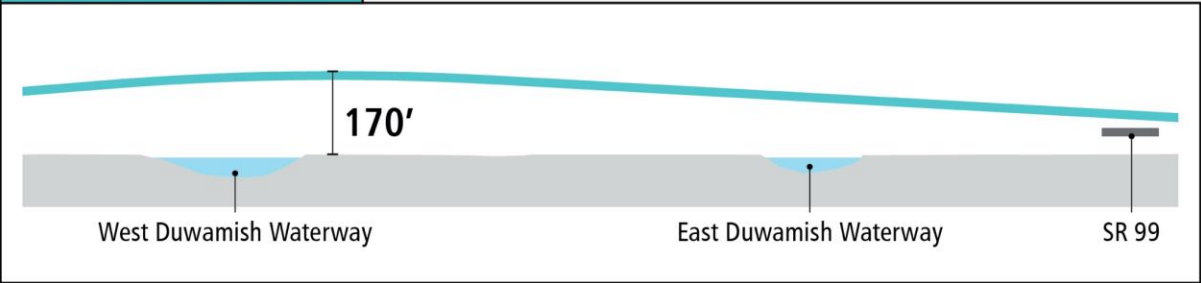
South Crossing (DUW-1a)

Diagrams are not to scale.
All measurements are approximate and are for discussion purposes only.

Draft EIS alternatives Duwamish



Other Build Alternatives



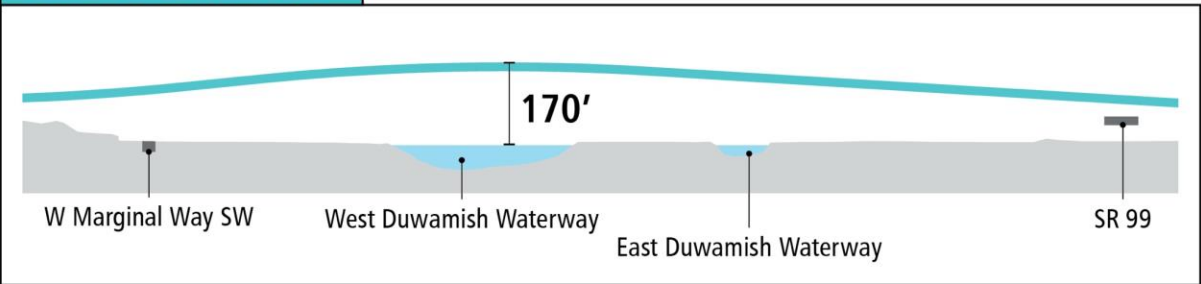
North Crossing (DUW-2)

Preferred Alternative



South Crossing (DUW-1a)

Other Build Alternatives



South Crossing South Edge Crossing Alignment Option (DUW-1b)

Diagrams are not to scale.
All measurements are approximate and are for discussion purposes only.

Delridge segment

Draft EIS alternatives Delridge



DRAFT EIS ALTERNATIVES

- PREFERRED ALTERNATIVES
- PREFERRED ALTERNATIVES WITH THIRD PARTY FUNDING
- OTHER DRAFT EIS ALTERNATIVES

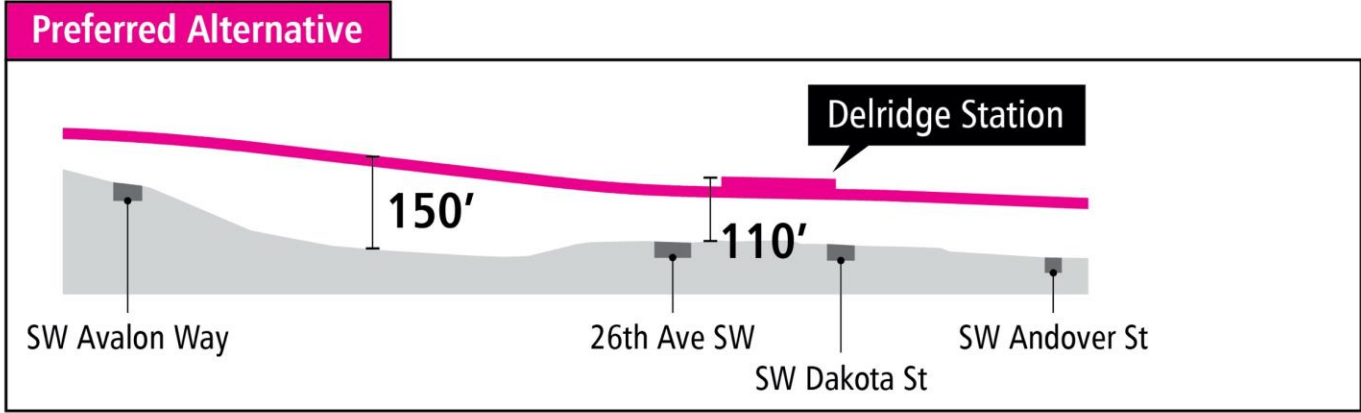
ROUTE AND STATION PROFILES

- ELEVATED
- AT-GRADE
- TUNNEL
- TUNNEL PORTAL

North arrow icon

Diagrams are not to scale. All measurements are approximate and are for discussion purposes only.

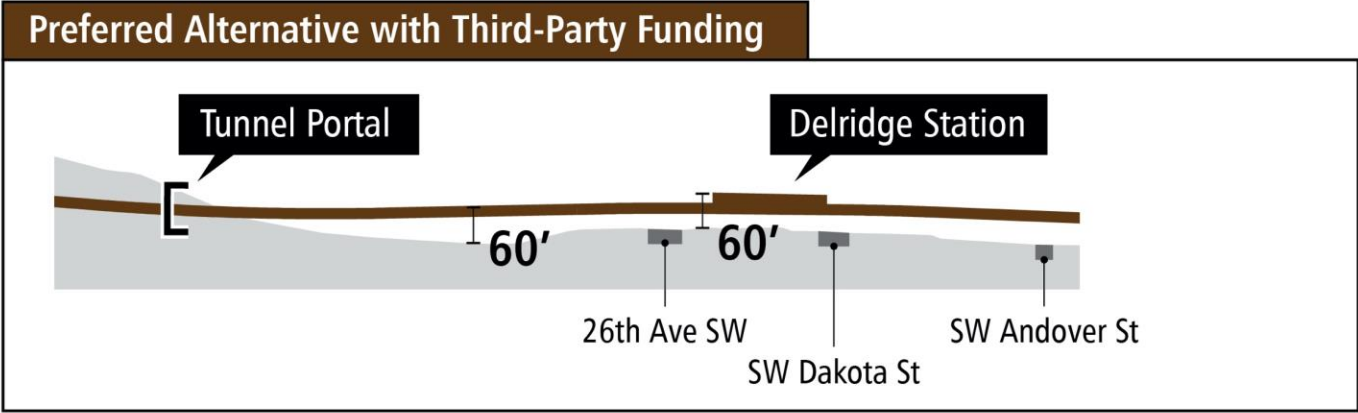
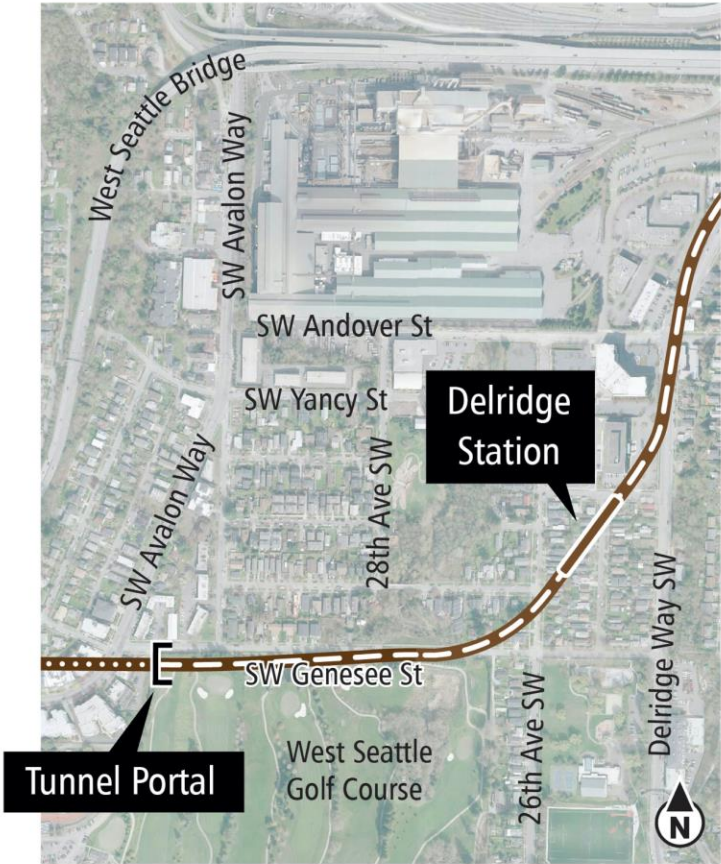
Draft EIS alternatives Delridge



Dakota Street Station (DEL-1a)

Diagrams are not to scale. All measurements are approximate and are for discussion purposes only.

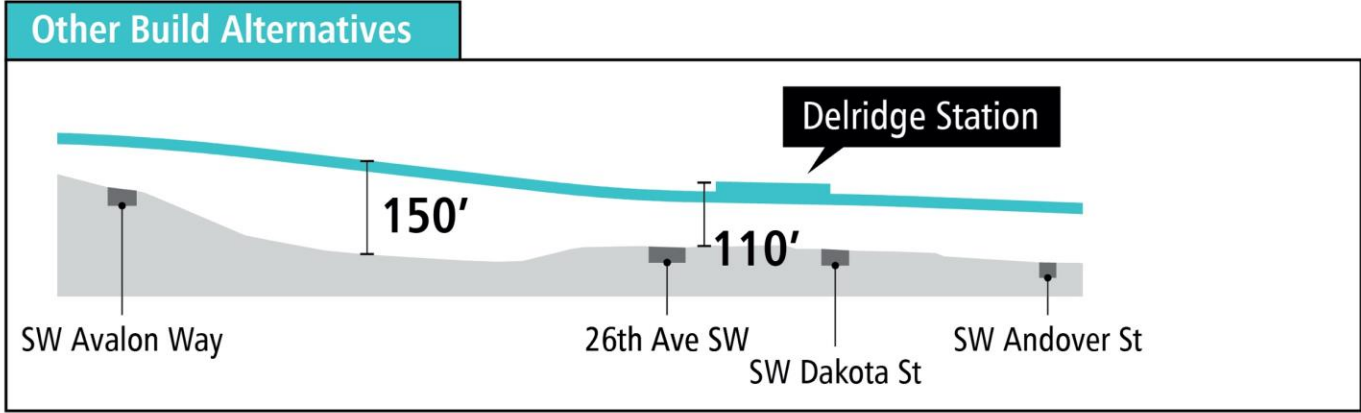
Draft EIS alternatives Delridge



Dakota Street Station Lower Height (DEL-2a)

Diagrams are not to scale. All measurements are approximate and are for discussion purposes only.

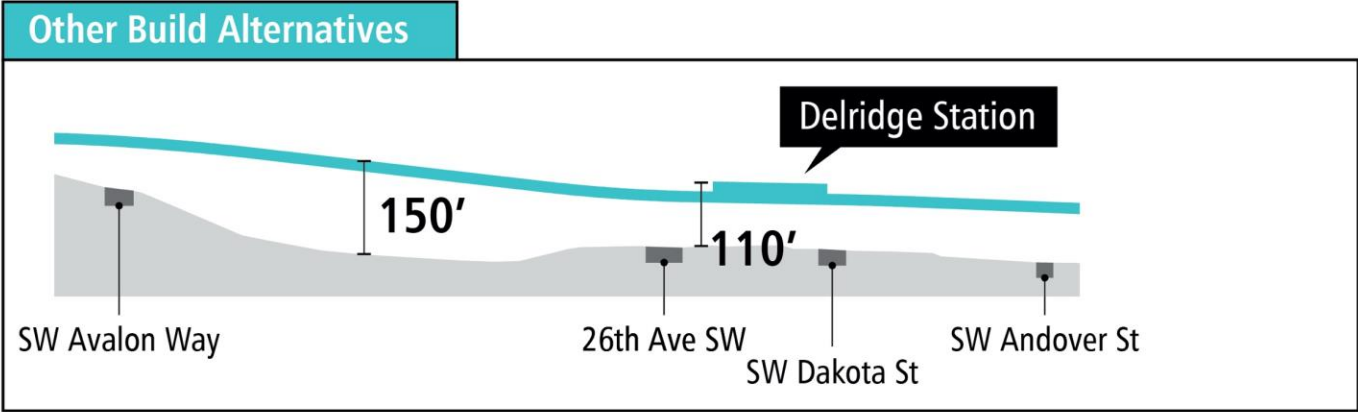
Draft EIS alternatives Delridge



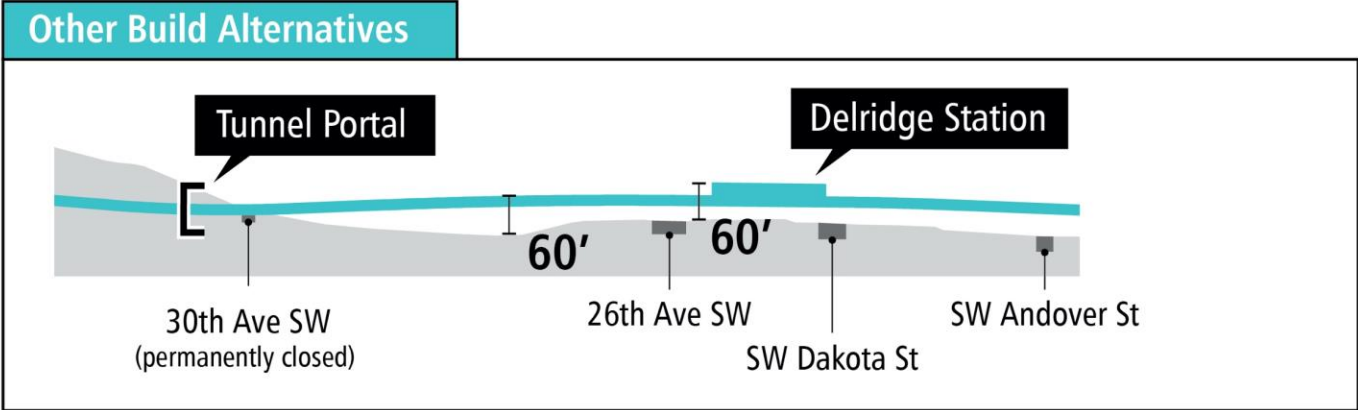
Dakota Street Station North Alignment Option (DEL-1b)

Diagrams are not to scale. All measurements are approximate and are for discussion purposes only.

Draft EIS alternatives Delridge



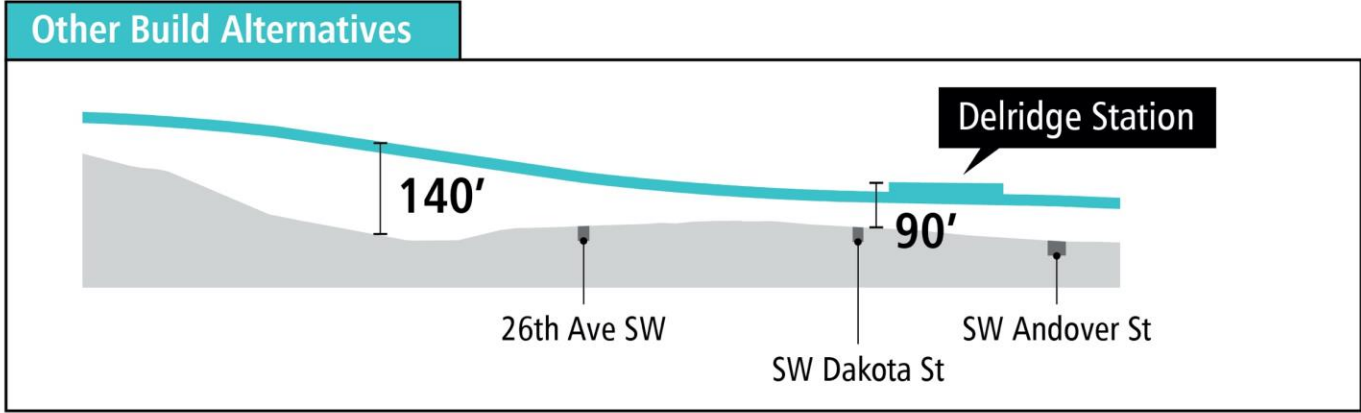
Dakota Street Station North Alignment Option (DEL-1b)



Dakota Street Station Lower Height North Alignment Option (DEL-2b)

Diagrams are not to scale. All measurements are approximate and are for discussion purposes only.

Draft EIS alternatives Delridge



Delridge Way Station (DEL-3)

Diagrams are not to scale. All measurements are approximate and are for discussion purposes only.

Draft EIS alternatives Delridge

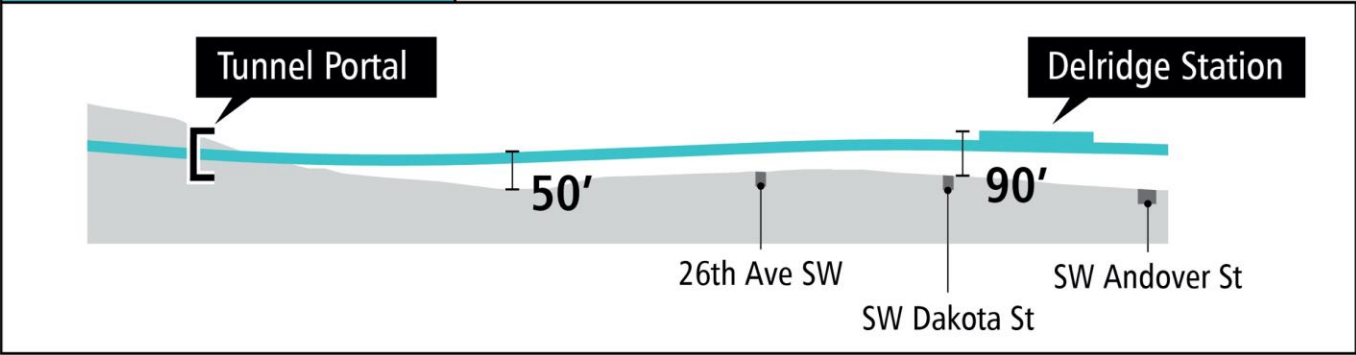


Other Build Alternatives



Delridge Way Station (DEL-3)

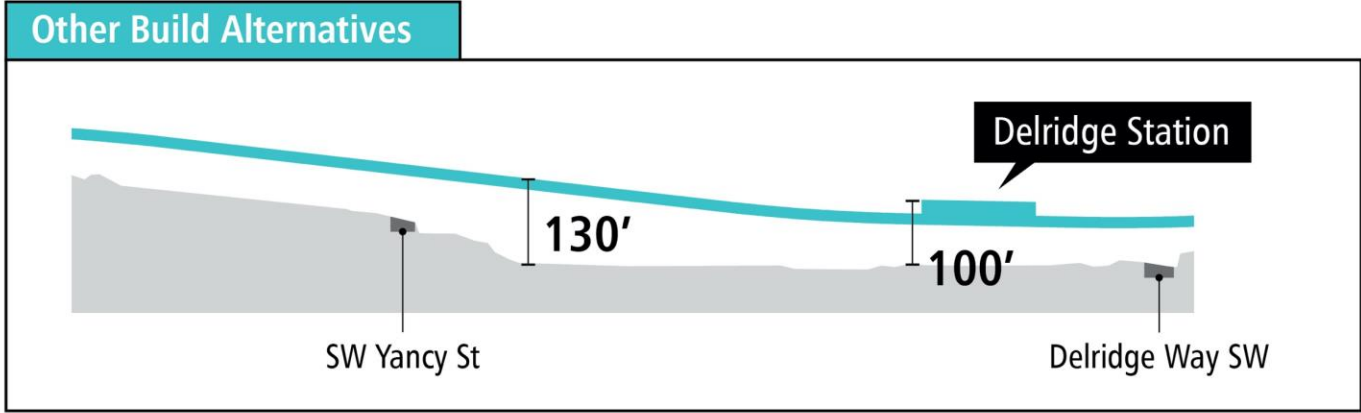
Other Build Alternatives



Delridge Way Station Lower Height (DEL-4)

Diagrams are not to scale. All measurements are approximate and are for discussion purposes only.

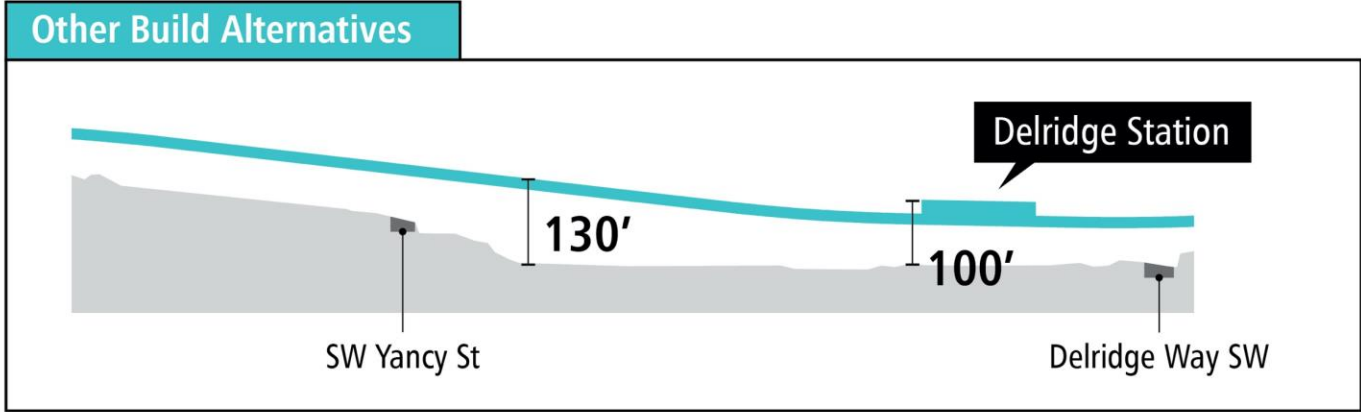
Draft EIS alternatives *Delridge*



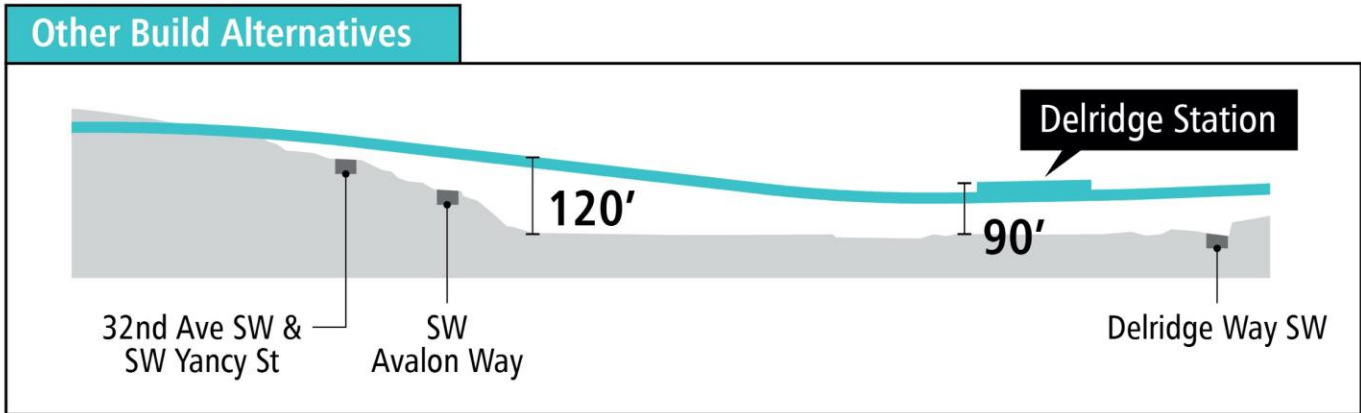
Andover Street Station (DEL-5)

Diagrams are not to scale. All measurements are approximate and are for discussion purposes only.

Draft EIS alternatives *Delridge*



Andover Street Station (DEL-5)

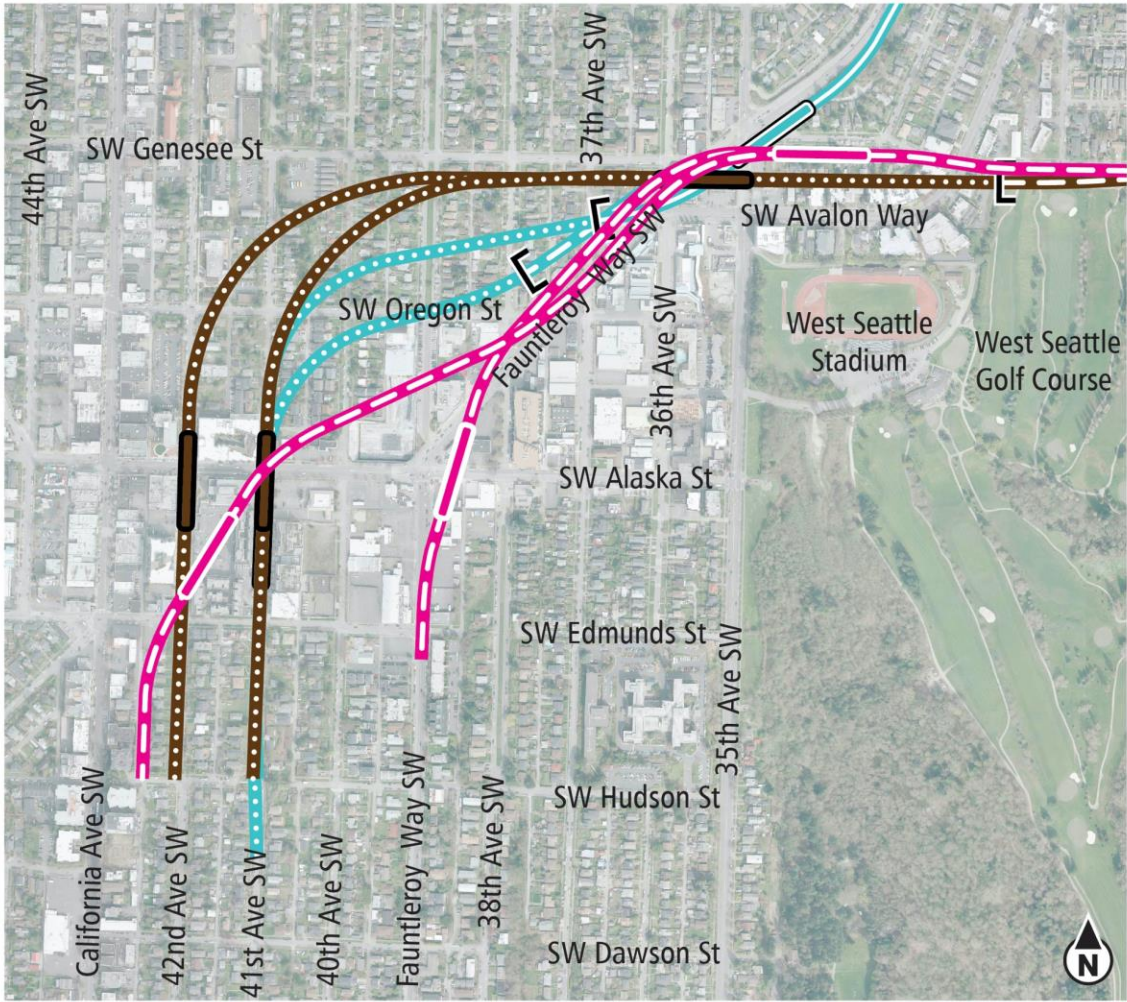


Andover Street Station Lower Height (DEL-6)

Diagrams are not to scale. All measurements are approximate and are for discussion purposes only.

West Seattle Junction segment

Draft EIS alternatives Junction




DRAFT EIS ALTERNATIVES

- PREFERRED ALTERNATIVES
- PREFERRED ALTERNATIVES WITH THIRD PARTY FUNDING
- OTHER DRAFT EIS ALTERNATIVES

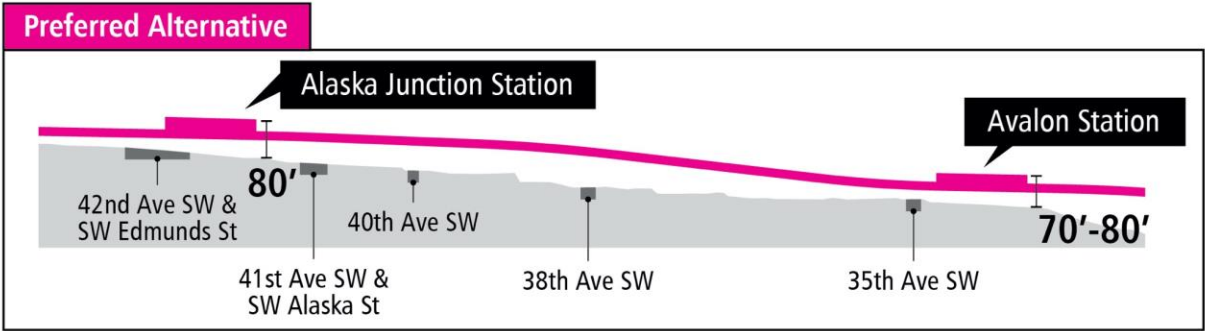
ROUTE AND STATION PROFILES

 / 	ELEVATED		TUNNEL PORTAL
 / 	AT-GRADE		
 / 	TUNNEL		



Diagrams are not to scale. All measurements are approximate and are for discussion purposes only.

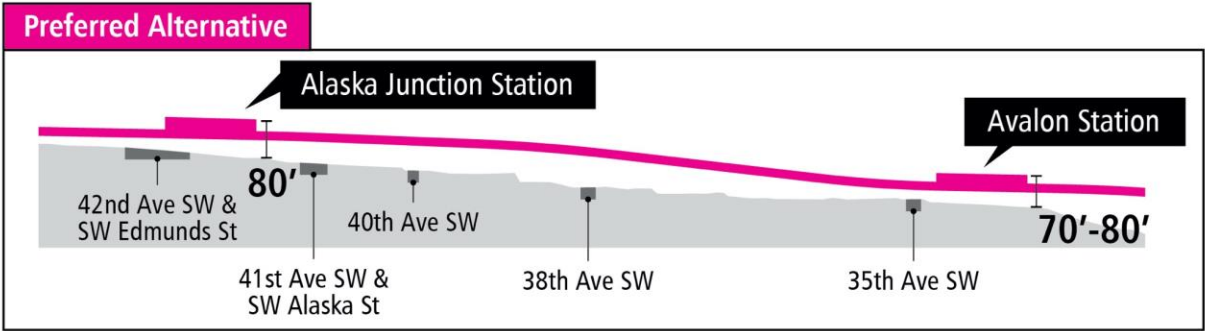
Draft EIS alternatives Junction



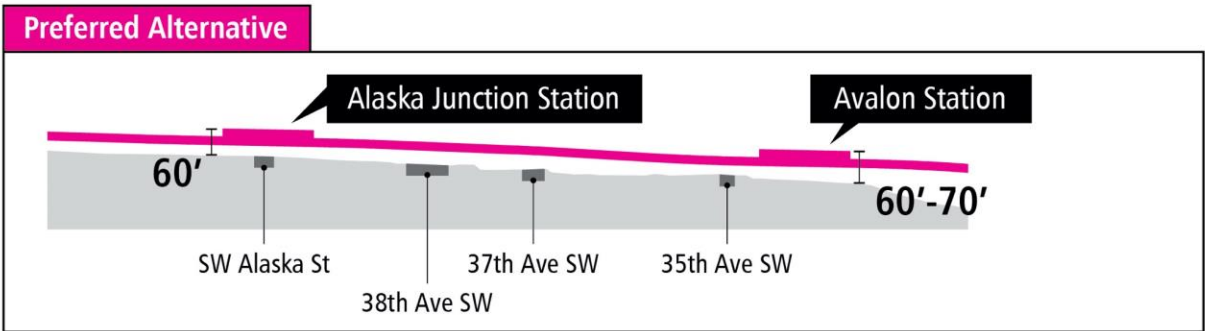
Elevated 41st/42nd Avenue Station (WSJ-1)

Diagrams are not to scale. All measurements are approximate and are for discussion purposes only.

Draft EIS alternatives Junction



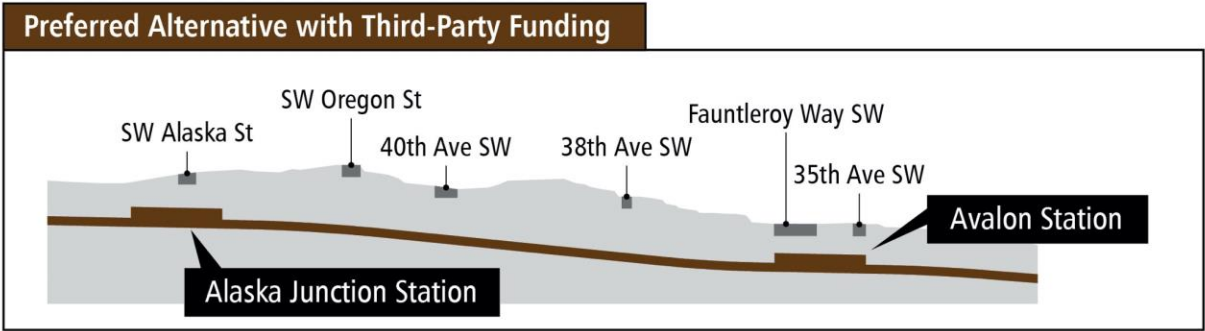
Elevated 41st/42nd Avenue Station (WSJ-1)



Elevated Fauntleroy Way Station (WSJ-2)

Diagrams are not to scale. All measurements are approximate and are for discussion purposes only.

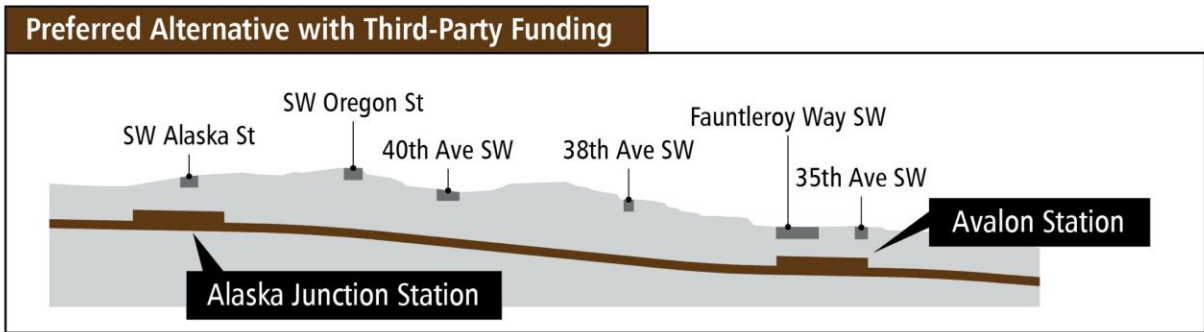
Draft EIS alternatives Junction



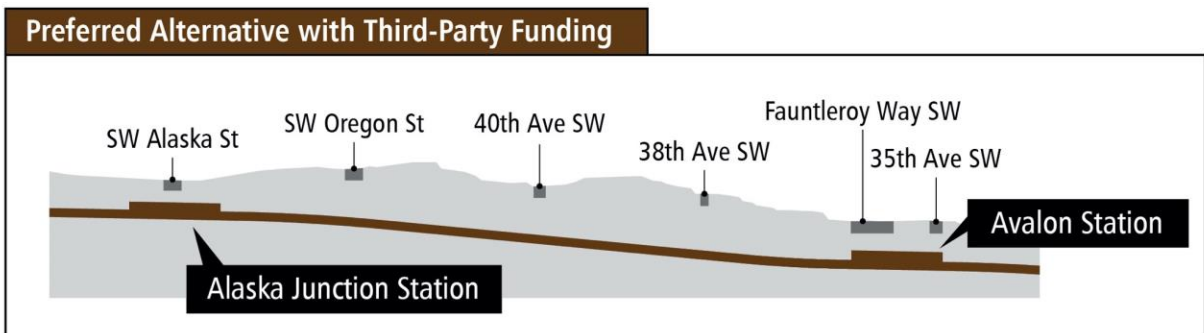
Tunnel 41st Avenue Station (WSJ-3a)

Diagrams are not to scale. All measurements are approximate and are for discussion purposes only.

Draft EIS alternatives Junction



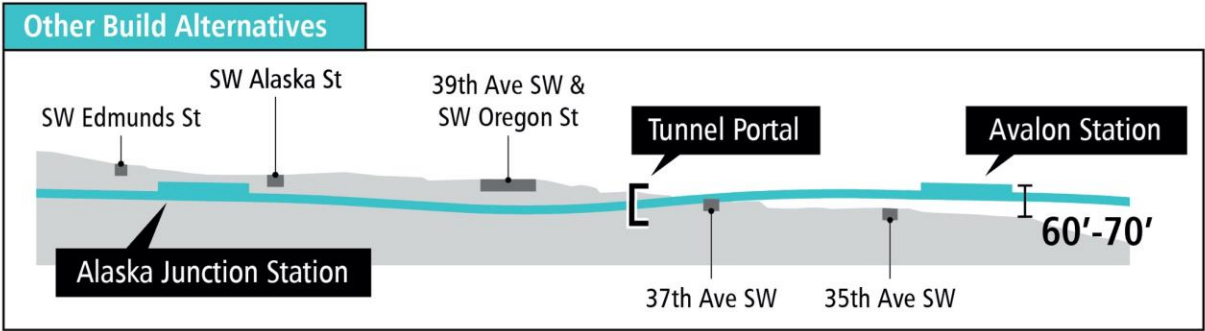
Tunnel 41st Avenue Station (WSJ-3a)



Tunnel 42nd Avenue Station Option (WSJ-3b)

Diagrams are not to scale. All measurements are approximate and are for discussion purposes only.

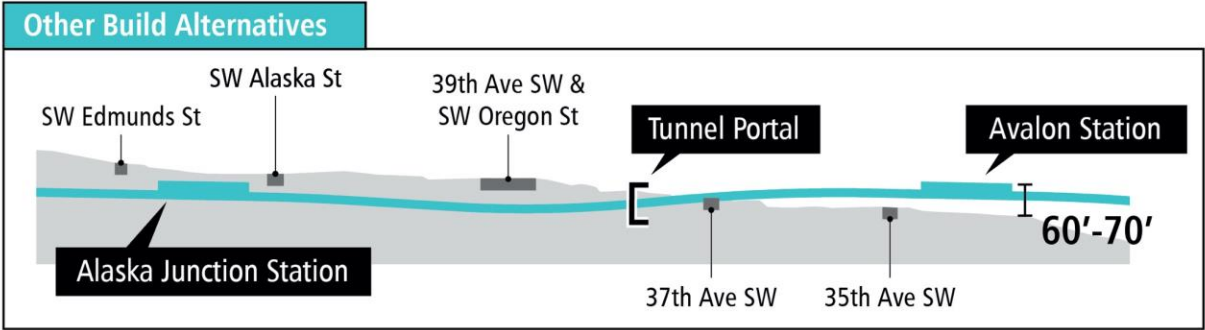
Draft EIS alternatives Junction



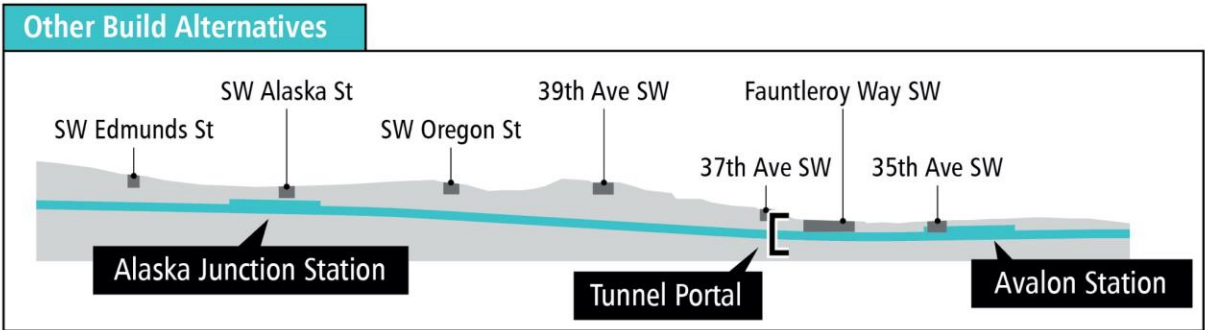
Short Tunnel 41st Avenue Station (WSJ-4)

Diagrams are not to scale. All measurements are approximate and are for discussion purposes only.

Draft EIS alternatives Junction



Short Tunnel 41st Avenue Station (WSJ-4)

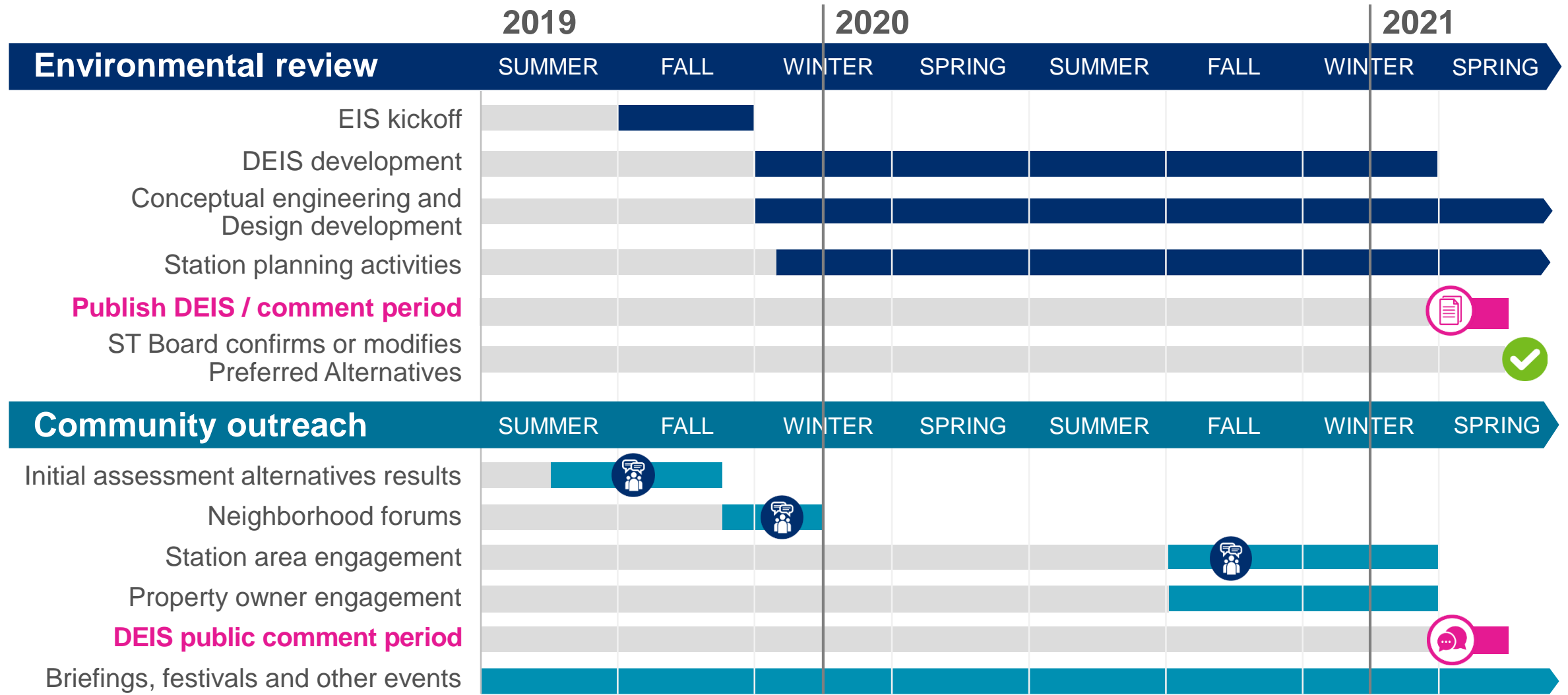


Medium Tunnel 41st Avenue Station (WSJ-5)

Diagrams are not to scale. All measurements are approximate and are for discussion purposes only.

Community engagement

Community outreach and collaboration



Fall 2019 – Summer 2020

Focus: Building general awareness of the project, the EIS phase and how to engage

- City-ST partnership to apply **Racial Equity Toolkit** to the project
- **Community briefings***
- **Waterway Users** survey and engagement
- **Fieldwork** notifications
- **Door to door** outreach as needed*
- **Email updates** and **outreach reports**
- **Inquiry responses** (phone, email)

**Due to COVID-19, as of March, moved engagement to virtual format*

Coming up (Fall 2020 – Winter 2021)

Focus: Prepare the community for publication of the DEIS, including updates around station planning and how to engage

- Online fall engagement platform (**Participate.Online** site)
- **Community briefings** (1:1's and community groups)
- **Equitable engagement** approaches
- **Near Neighbor** mailer
- Outreach to **property owners**

Participate. Online site



Welcome Project overview Alternatives Environmental review

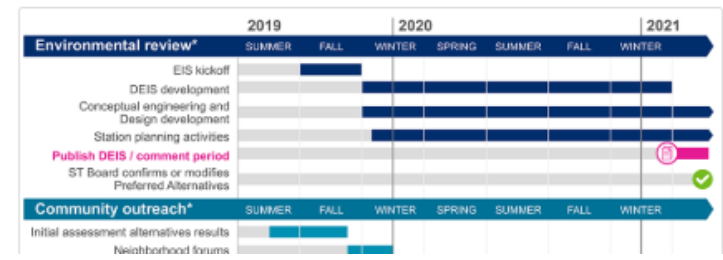
Welcome

What's happening now

Sound Transit is currently studying [multiple light rail routes and station options](#) (called alternatives) for the West Seattle and Ballard Link Extensions project.

This project is currently in [Environmental Review](#), where we are studying the potential impacts of the alternatives on the natural, built and social environment. We will publish the results in a Draft Environmental Impact Statement (EIS) in early 2021. This will be an important opportunity to share your feedback and comment on the project. The Sound Transit Board will take public feedback and the results of the Draft EIS into consideration when they confirm or modify the preferred alternatives. You can keep up with the project by [subscribing to monthly email updates](#) for the latest information.

Project timeline



Project overview

Expanding light rail in Seattle



Instructions:
Open video and choose settings for translated captions.
Abre el video y elige configuraciones para subtítulos traducidos.
Mở video và chọn cài đặt cho phụ đề đã được dịch.
打开视频，选择设置观看字幕翻译。
打開視頻，選擇設置觀看字幕翻譯。

The West Seattle and Ballard Link Extensions project will provide fast and reliable light rail transit to West Seattle and Ballard and neighborhoods in between, such as SODO, Chinatown-International District, Downtown, South Lake Union, Smith Cove and Interbay.

In November 2016, voters approved the regional ST3 package, which included a representative alignment for the West Seattle and Ballard Link Extensions project. The [Representative Project](#) was our starting point, which identified the transit mode, project corridor, number of stations and general station locations. It also informed the project cost, schedule and future operating needs.

Fast facts:

- West Seattle to downtown (Start of service: 2030)**
 - Adds 4.7 miles of light rail service from downtown Seattle to West Seattle's Alaska Junction neighborhood.
 - Includes 4 new stations between SODO and Alaska Junction.

We heard you... "Build it quickly"

Public input provided during the development of ST3 underscored the importance of getting light rail extensions in service faster. In response to community feedback, we are engaging the public early and more frequently to build these projects more quickly. Sound Transit has established aggressive planning and environmental analysis timelines that rely on early and lasting community consensus on a preferred alternative.

Get involved!

- Request a briefing
- Call the project line to speak with an Outreach Specialist (206) 903-7229
- Email wsblink@soundtransit.org with questions, concerns or comments

Alternatives

Current route and station alternatives

At the conclusion of the alternatives development phase of the project, the Sound Transit Board identified preferred alternatives, preferred alternatives with third-party funding and other alternatives to study in the Draft EIS.

Making connections

Building light rail isn't just about moving people from place to place, it's also about building community. We will work with communities along the project corridor to help inform early station design development. It's our goal to identify opportunities that best align with your neighborhood priorities and connect more people to mass transit.

Interbay/Ballard alternatives

Draft EIS alternatives - Interbay/Ballard segment



Click to enlarge

Downtown alternatives

Draft EIS alternatives - Downtown segment



Community briefings

- Community groups – continuing to engage known groups, but with an emphasis on new groups, following up on key issues and interests
- As appropriate, engaging social service providers, communities of color, low-income and other vulnerable populations

Equitable engagement approaches

- Provide flexible format of online materials to prepare communities for publication of DEIS
- Meet community where they are at this time, in formats that are responsive to the COVID-19 environment (in language and with a focus on underrepresented communities)

A blue rectangular sign with rounded corners. In the top left corner, there is a circular icon with a green border containing a white light rail train. The sign features the following text in white and yellow: "Light rail is coming to your neighborhood!" in white, "轻轨即将来到您的社区!" in white, "iEl tren ligero llega a tu comunidad!" in yellow, "Đường sắt nhẹ sắp đến với cộng đồng của bạn!" in white, and "Learn more | 學到更多 | Aprende más | Tìm hiểu thêm" in white. At the bottom, the text "participate.online" is written in yellow.

Learn more | 學到更多 | Aprende mas | www.blink.participate.online



voters approved
will include
stations.

atives to
fit EIS
and
it
cess,

transit Board is responding at

to see updates or have questions?
Community Outreach team:
9 or webink@soundtransit.org

As part of the regional transit expansion Puget Sound voters approved in 2016, the West Seattle and Ballard Link Extensions will include 11.8 additional miles of Link light rail service and 13 new stations.

In 1919, the Sound Transit Board of Directors identified their preferred route and station locations, as well as other alternatives to study through a Draft Environmental Impact Statement. A Draft EIS analyzes and documents possible routes and station locations and their potential impacts to the natural and built environment, and it proposes ways to mitigate unavoidable impacts. Through this process, we consider things like effects on historic and cultural resources, residential properties, businesses, communities, the local economy and other resources.

We're hard at work preparing the Draft EIS for next year. In the meantime, check out our station planning updates and learn more about the project online:

[wsblink.participate.online](#)

Our next formal comment period will be in early 2021, after we publish the Draft EIS. The Sound Transit Board will rely on feedback from the public, local agencies and tribes as they decide whether to confirm or modify their preferred route and station locations. We'll then conduct a Final EIS and respond to your comments. After we publish the Final EIS in 2022, the Board will select the final projects to be built.

The COVID-19 crisis may affect transit expansion projects and timelines. Learn about how the Sound Transit Board is responding at soundtransit.org/realignment.

Can't get online to see updates or have questions?
Contact our Community Outreach team:
206-903-7229 or wsblink@soundtransit.org

⁹The term 'Preferred Alternative' indicates the Sound Transit Board's preference, but it is not a final decision or obligation.

As part of the regional transit expansion Puget Sound voters approved in 2016, the West Seattle and Ballard Link Extensions will include 11.9 additional miles of Link light rail service and 13 new stations.

In 2019, the Sound Transit Board of Directors identified their preferred route and station locations, as well as other alternatives to study through a Draft Environmental Impact Statement. A Draft EIS analyzes and documents possible routes and station locations and their potential impacts to the natural and built environment, and it proposes ways to mitigate unavoidable impacts. Through this process, we consider things like effects on historic and cultural resources, residential properties, businesses, communities, the local economy and other resources.

We're hard at work preparing the Draft EIS for next year. In the meantime, check out our station planning updates and learn more about the project online:

wsblink.participate.online

Our next formal comment period will be in early 2021, after we publish the Draft EIS. The Sound Transit Board will rely on feedback from the public, local agencies and tribes as they decide whether to confirm or modify their preferred route and station locations. We'll then conduct a Final EIS and respond to your comments. After we publish the Final EIS in 2022, the Board will select the final projects to be built.

The COVID-19 crisis may affect transit expansion projects and timelines. Learn about how the Sound Transit Board is responding at soundtransit.org/realignment.

Contact our Community Outreach team:
206-903-7229 or wablink@soundtransit.org

³The term 'Preferred Alternative' indicates the Sound Transit Board's preference, but it is not a final decision or obligation.

As part of the regional transit expansion Puget Sound voters approved in 2016, the West Seattle and Ballard Link Extensions will include 11.9 additional miles of Link light rail service and 13 new stations.

In 2019, the Sound Transit Board of Directors identified their preferred route and station locations, as well as other alternatives to study through a Draft Environmental Impact Statement. A Draft EIS analyzes and documents possible routes and station locations and their potential impacts to the natural and built environment, and it proposes ways to mitigate unavoidable impacts. Through this process, we consider things like effects on historic and cultural resources, residential properties, businesses, communities, the local economy and other resources.

We're hard at work preparing the Draft EIS for next year. In the meantime, check out our station planning updates and learn more about the project online:

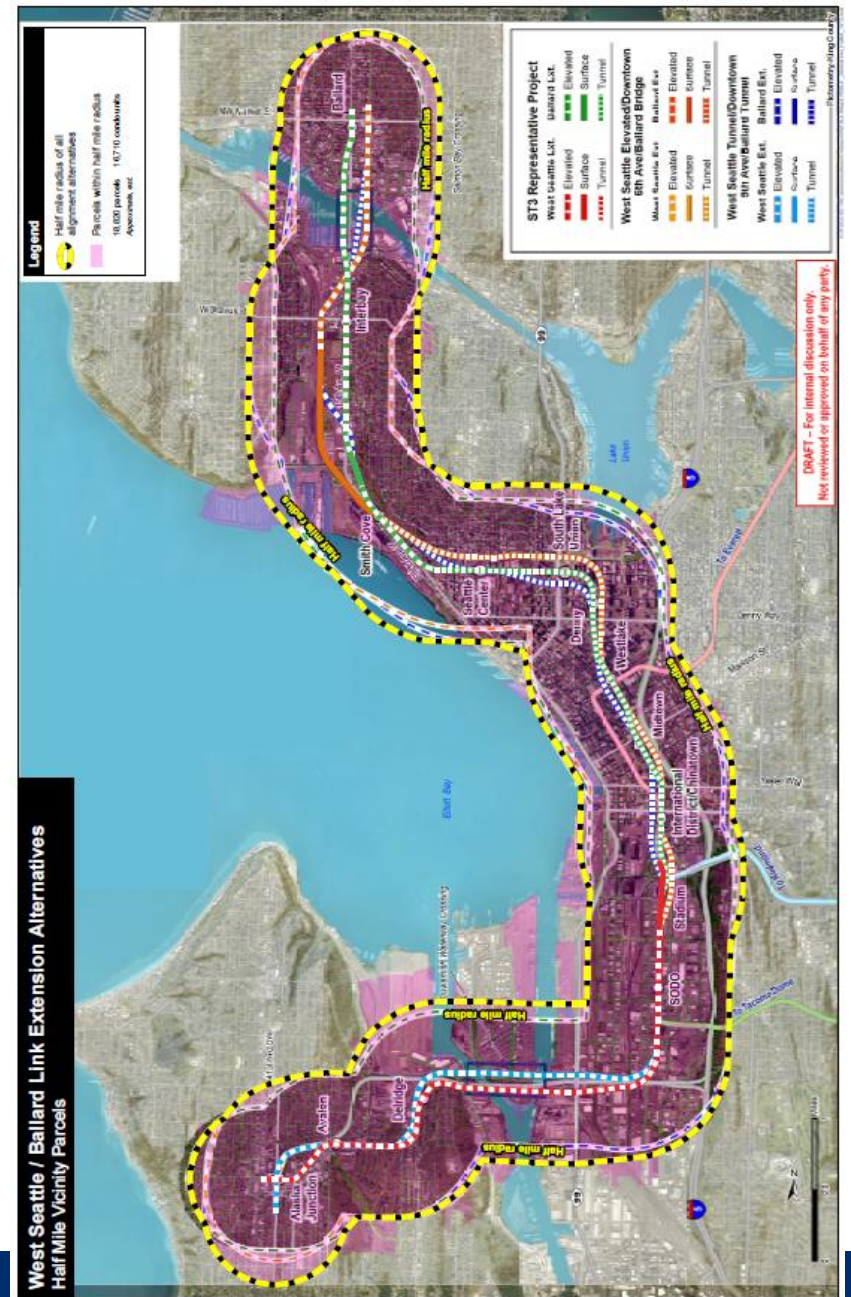
wsblink.participateonline

Our next formal comment period will be in early 2021, after we publish the Draft EIS. The Sound Transit Board will rely on feedback from the public, local agencies and tribes as they decide whether to confirm or modify their preferred route and station locations. We'll then conduct a Final EIS and respond to your comments. After we publish the Final EIS in 2022, the Board will select the final projects to be built.

The COVID-19 crisis may affect transit expansion projects and timelines. Learn about how the Sound Transit Board is responding at [soundtransit.org/realignment](https://www.soundtransit.org/realignment).

Can't get online to see updates or have questions?
Contact our Community Outreach team:
206-803-7229 or wablink@soundtransit.org

⁹The term 'Preferred Alternative' indicates the Sound Transit Board's preference, but it is not a final decision or obligation.



DRAFT – For internal discussion only.
Not reviewed or approved on behalf of any party.

Property owner notifications

- (Re-)Introduce WSBLE project, EIS process and timeline
- Proactively inform potentially affected property owners and build relationships
- Provide opportunities for potentially affected property owners to engage with project staff

Next year – DEIS publication (Spring 2021)

Focus: Share information found in Draft EIS and collect feedback

- Seek formal comments on the Draft EIS to share with the Sound Transit Board and FTA
 - Share information in a variety of formats (including online), focus on accessibility
 - Provide several ways for people to provide comments. For example, online, voicemail, email, in-language, public comment and more.

 *wsblink@soundtransit.org*
(206) 903-7229



soundtransit.org/wsblink

