



Puget Sound Regional Council

# Regional Planning Update

December 5, 2019



# Central Puget Sound Region



- 4.2 million people
- 2.3 million jobs
- 4 counties
- 82 cities and towns
- Urban and rural
- 6400 square miles
- 1000 square miles urbanized



# Puget Sound Regional Council



## What we do

- **Planning: growth, economy, transportation**
- **Federal transportation funds (\$240 million/year)**
- **Regional data and forecasts**
- **Forum for regional issues**

## Our members

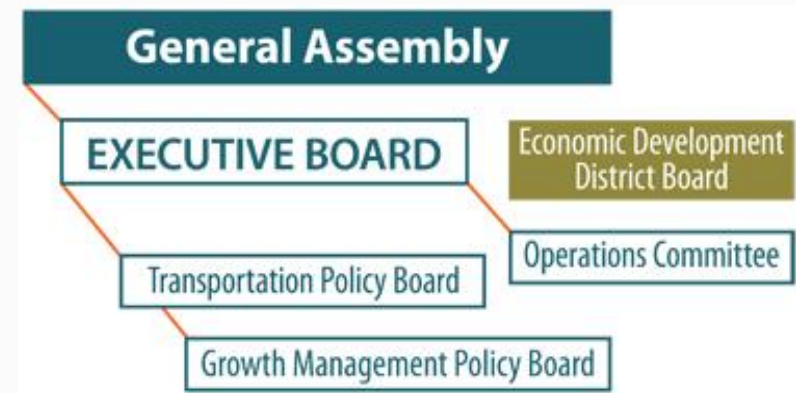
- **Cities, Counties, Ports, Transit**
- **State Agencies and Tribal Governments**



Executive Bruce Dammeier  
*Pierce County - President*



Councilmember Claudia Balducci  
*King County - Vice President*



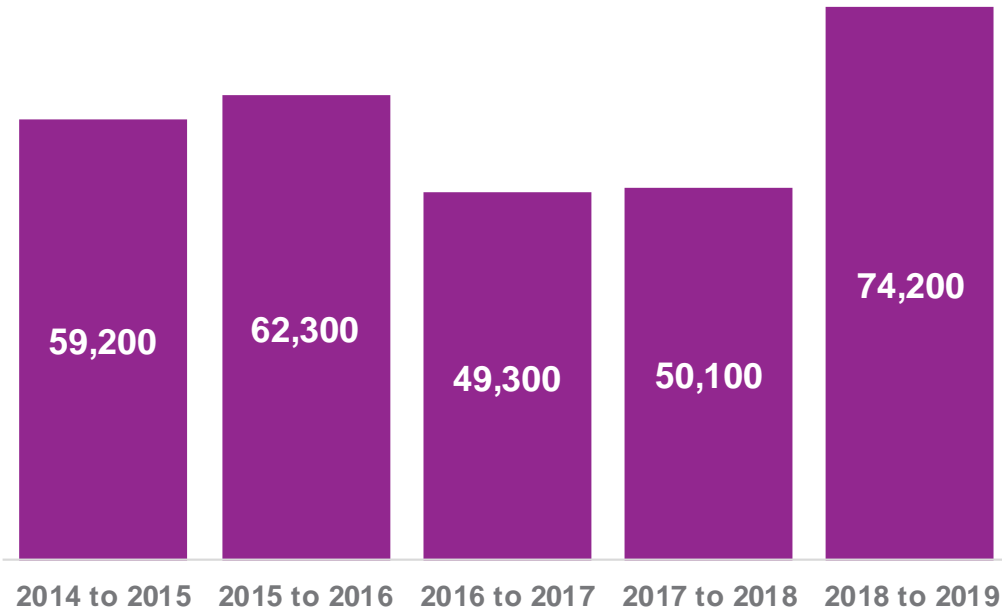


# Growth Trends

# Regional Job Growth Surge

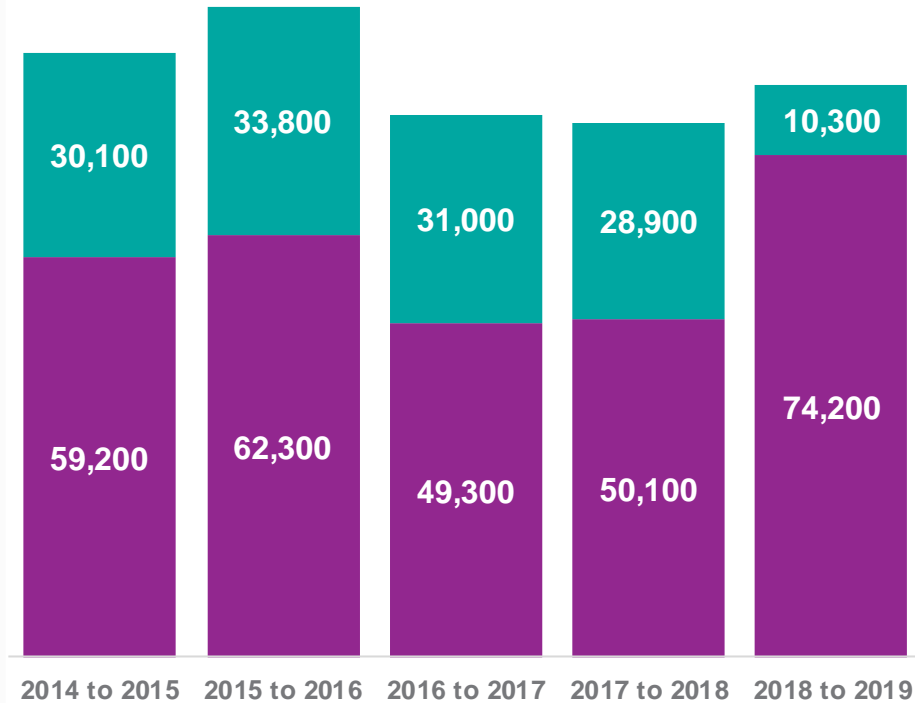


Highest annual total in 5 years



- **74k** wage & salary jobs were added to the region last year (**3.5% increase**)
- Over **464k** jobs have been added to the region since 2010

# WA Job Growth Outside Region Slows



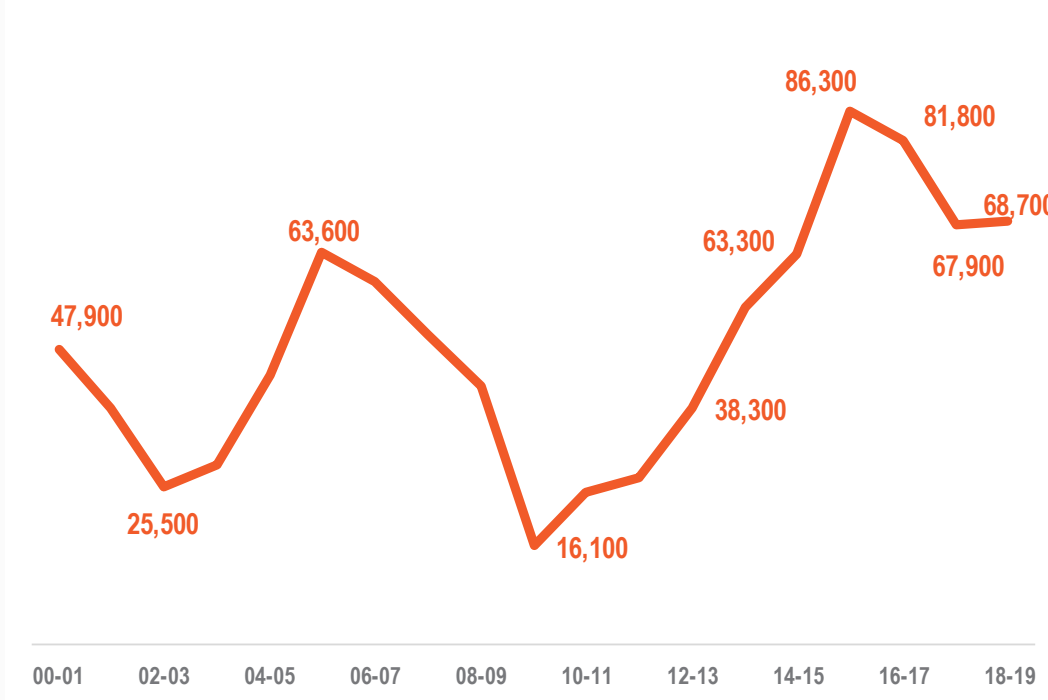
- Regional employment increase accounted for over **88%** of the statewide total increase last year
- Regional employment accounts for **69%** of the statewide total from 2014-2019



# Population Growth Remains Strong



## Annual Population Change in the Central Puget Sound

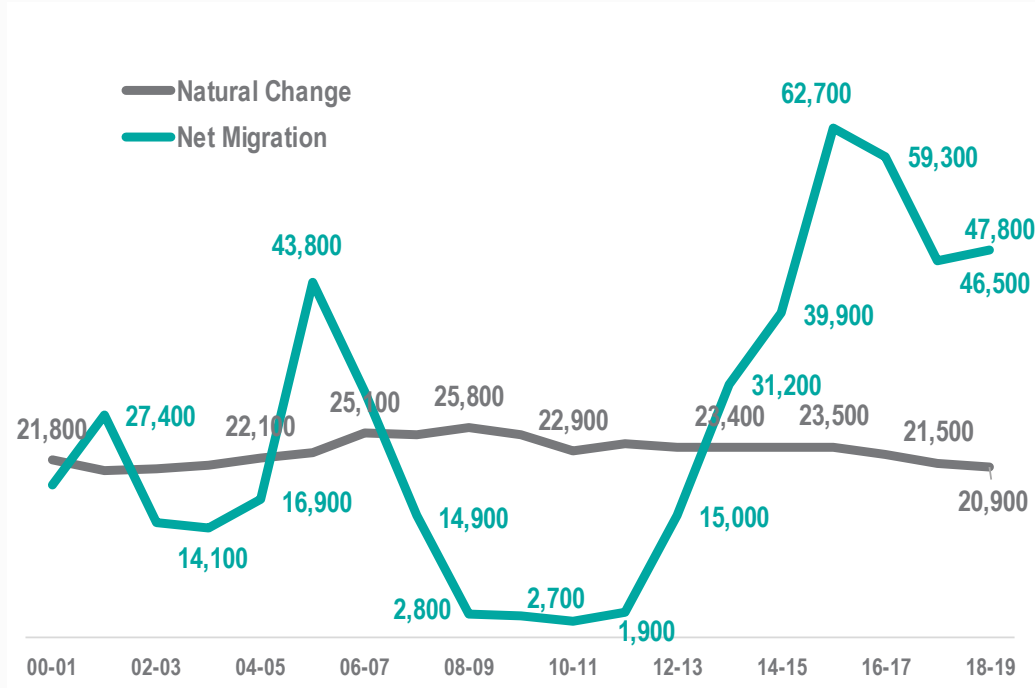


- Regional population of 4.20 million in 2019
- 68,700 added to region in 2018-19 (**1.7% increase**)
- Almost 368k new people have been added to the region in the past 5 years (**9.4% increase**)

# Migration Still Driving Population Growth



## Annual Population Change by Component



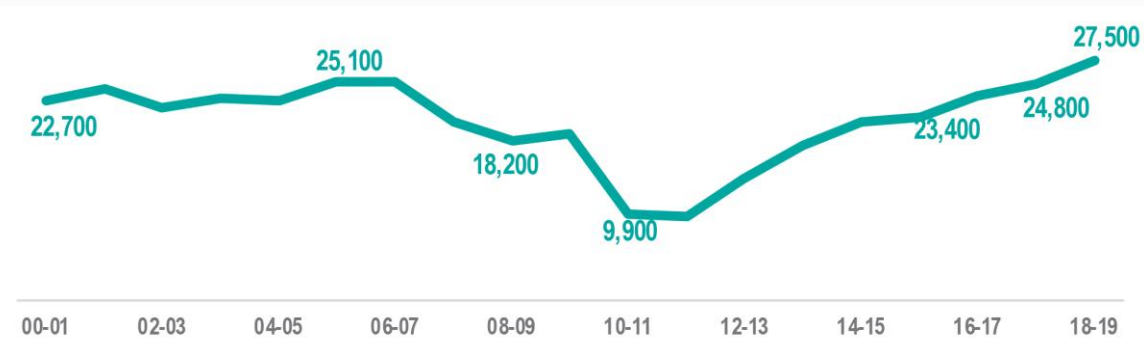
- Natural changes in population account for **21k – 24k** new residents per year
- Migration continues to outpace natural population changes
- Since 2010, **60%** of the region's population growth has been from migration



# Recent Growth in Housing Production

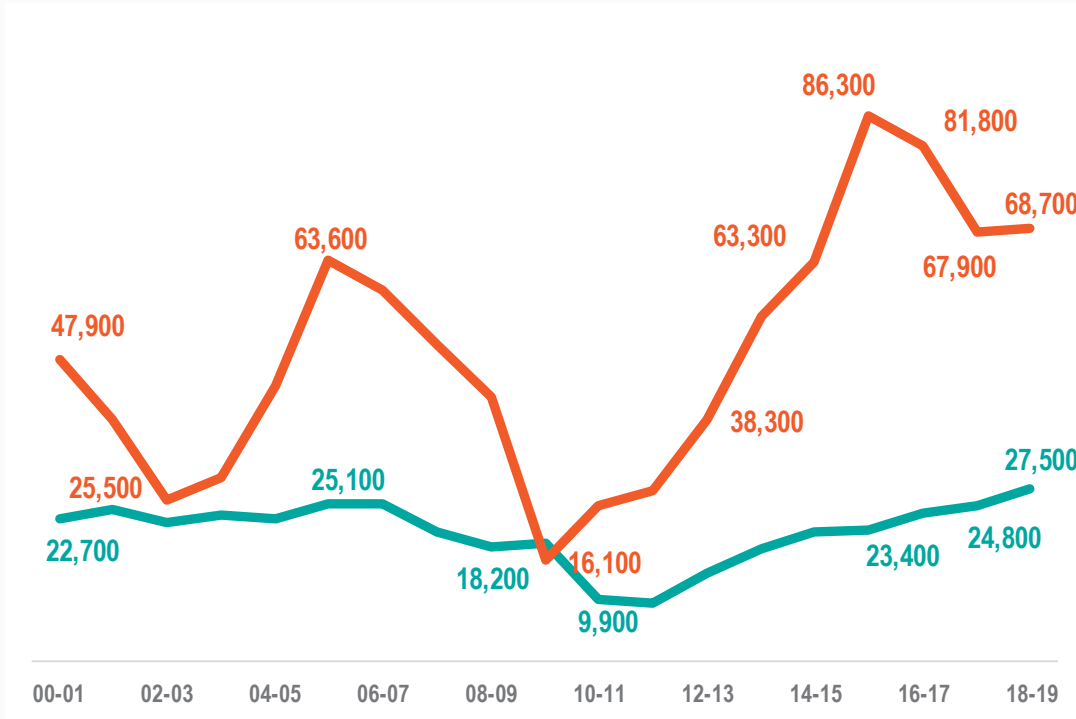


## 2018: Highest Level of Housing Production in 20 years



- The region's housing stock has expanded by nearly **150,000** units since 2012
- Housing production has averaged **21,300** units per year since 2012

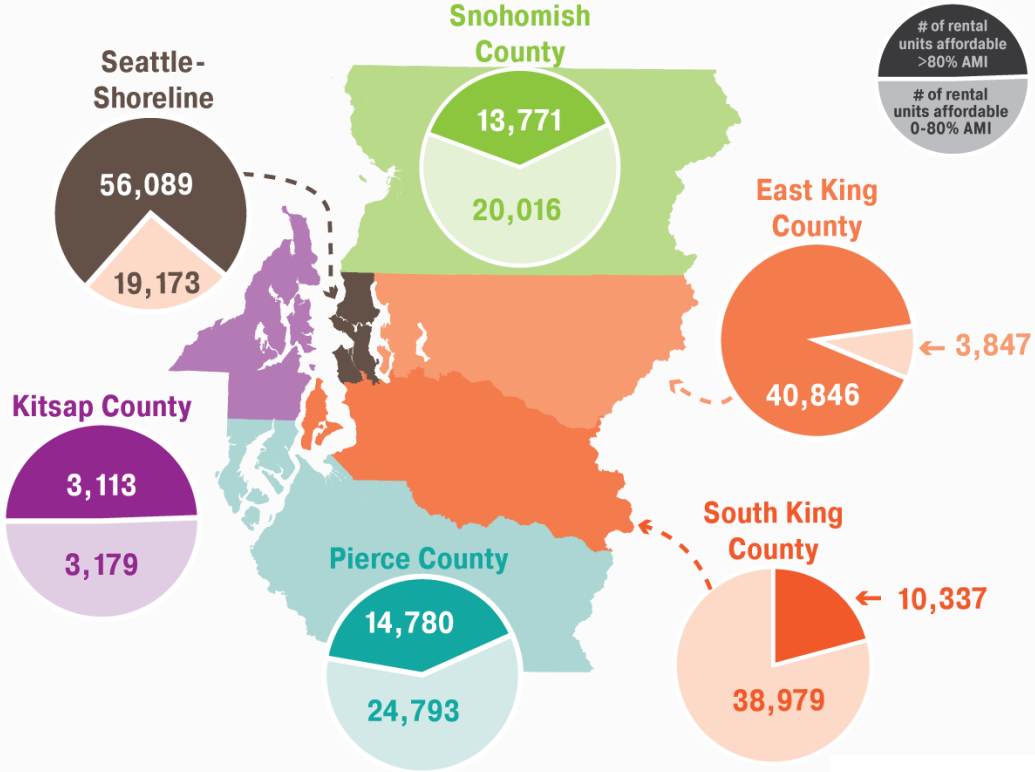
# Housing Production and Population Growth



21,300 units  
(X) 2.5 People/Household  
Enough housing for  
**53,250** people

- Production last year could house **68,750** people

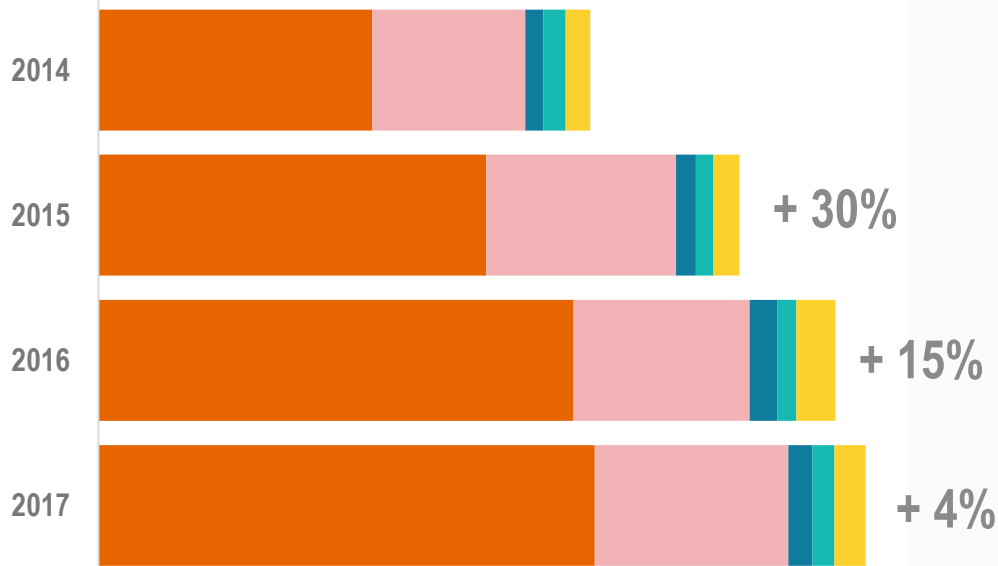
# Availability of Affordable Housing Limited



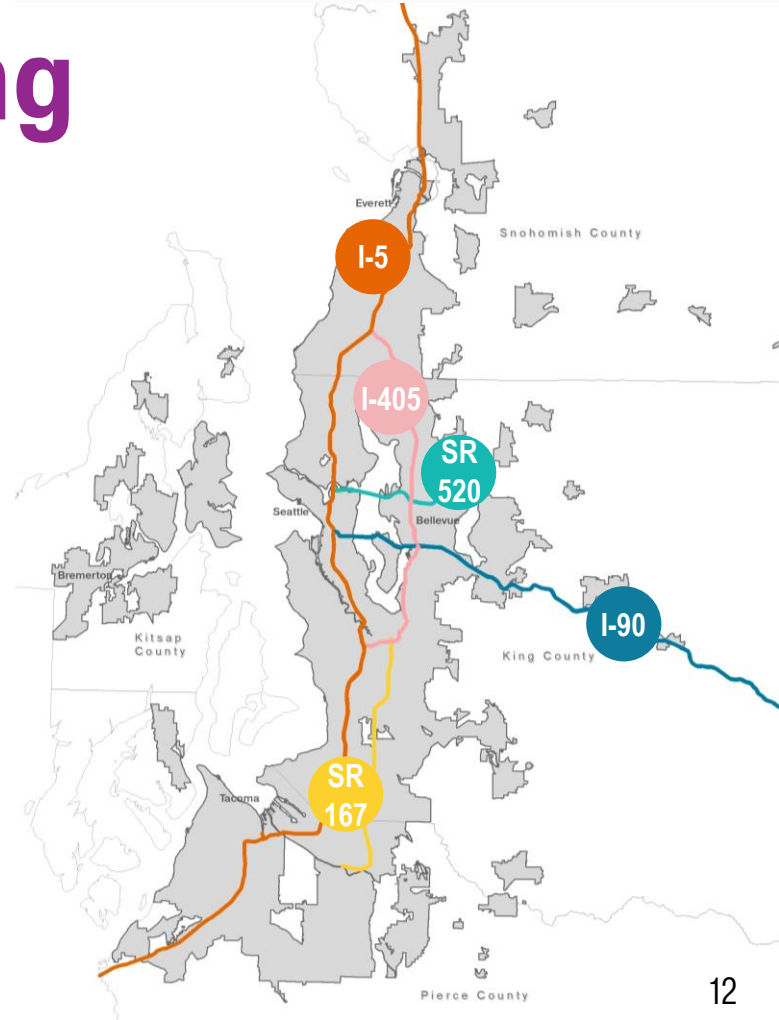
Source: Dupre + Scott

# Travel times increasing

Delay increased **95%** between 2010-2015



Vehicle hours of delay by freeway corridor.

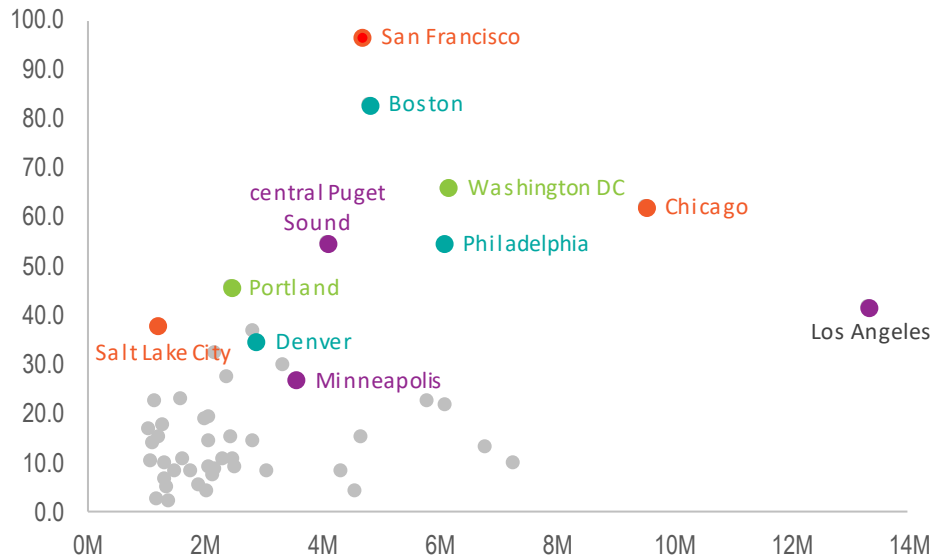




# Transit use increasing



## Annual Transit Boardings per Capita



Source: National Transit Database Monthly Adjusted Release, December 2018



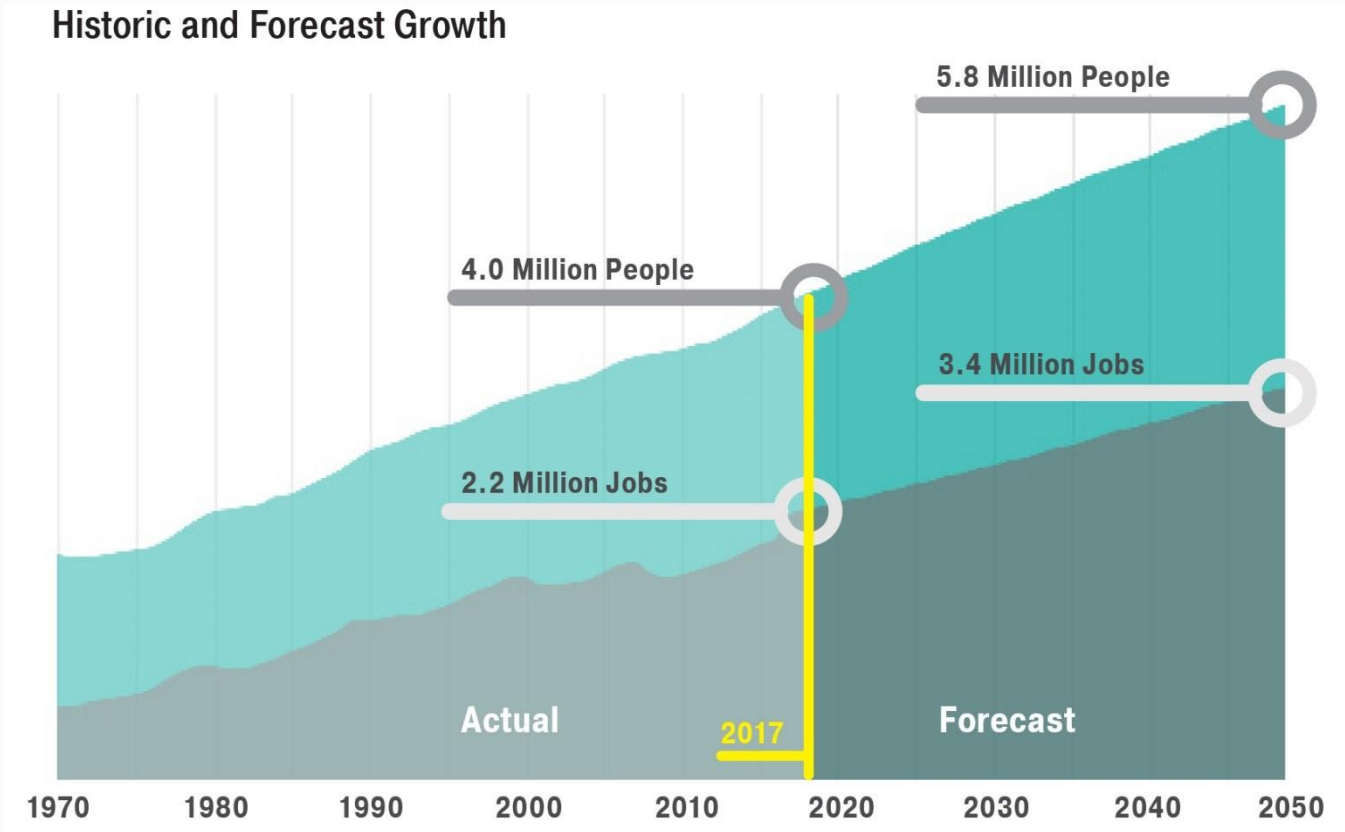
- In 2018, 6<sup>th</sup> highest transit boardings per capita in nation
- All cities above region have legacy heavy rail systems





# Planning Framework

# 2050 population forecast





# Who will be living here?

In 2050, the region's residents will be:

## Older



18% of the region's population will be over the age of 65 by 2050, up from 14% today.

## More diverse



Between 2000 and 2016, 81% of the region's population growth was people of color.

## In smaller households



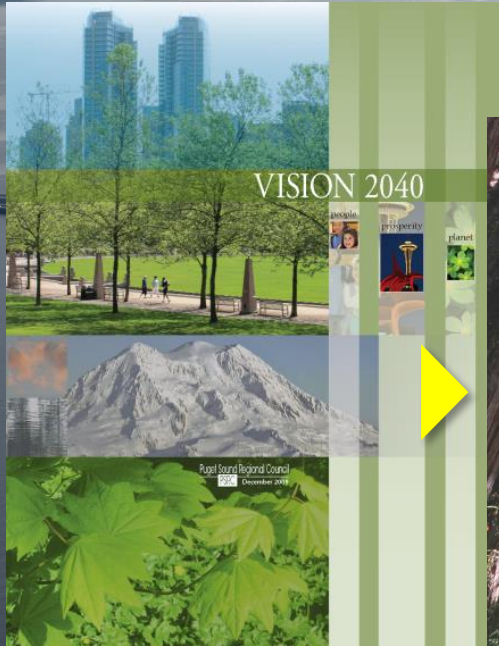
In 2050 there will be 2.36 people per household on average, down from 2.50 today.



# VISION 2040



# VISION 2050



- A strong economy and a healthy environment
- Preserve waters, farms, recreation and resource lands
- Urban Growth Area and centers strategy
- Local actions to achieve regional VISION



# Integrated plan for sustainable development

## REGIONAL POLICY DIRECTION

### VISION 2050

—Multicounty Planning Policies—  
—Regional Growth Strategy—

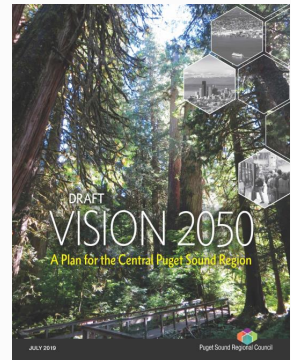
## DETAILED FUNCTIONAL IMPLEMENTATION PLANS

### Regional Transportation Plan

—Metropolitan Transportation Plan—

### Regional Economic Strategy

—Comprehensive Economic Development Strategy—





# VISION 2050 Work Program



2017

2018

2019

2020

● Early work

● Scoping, research,  
planning

● SEPA review,  
draft plan

● Adoption

# VISION 2050



Increase **housing** choices and affordability



Provide **opportunities** for all



Sustain a strong **economy**



Significantly reduce greenhouse gas **emissions**



Keep the region **moving**



Restore the health of **Puget Sound**



Protect a network of **open space**



Growth in **centers** and near **transit**

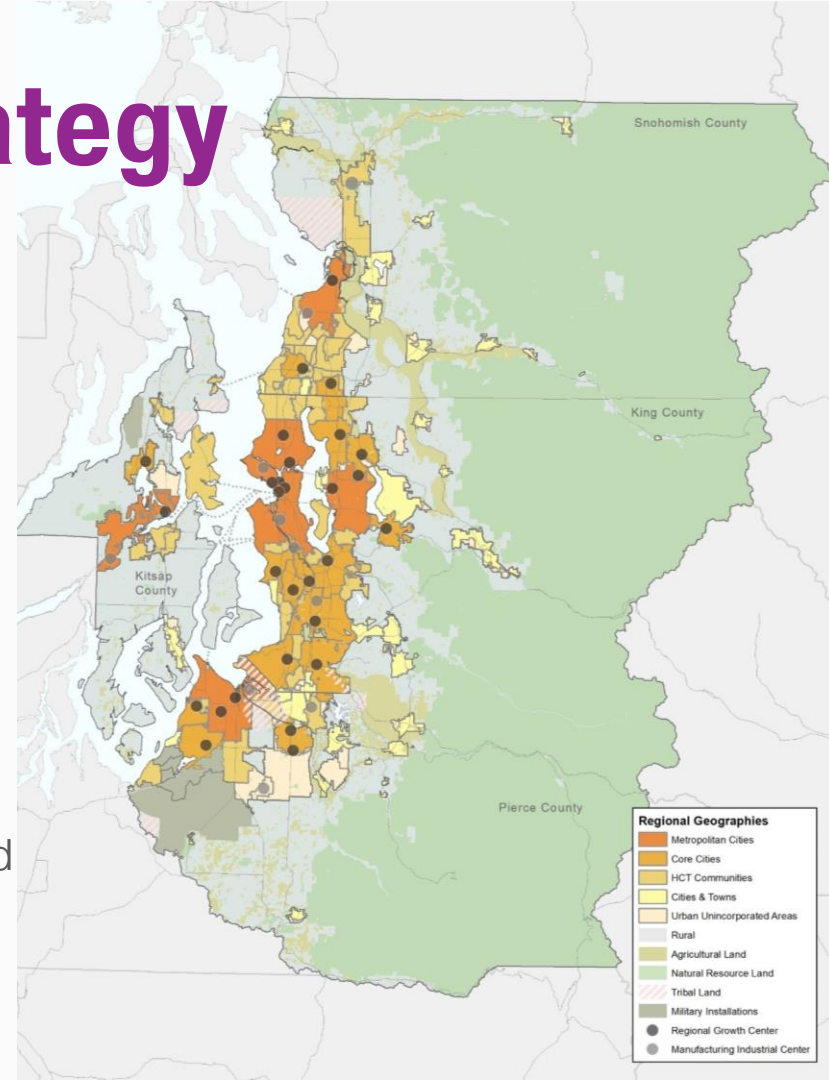


Act **collaboratively** and support **local efforts**



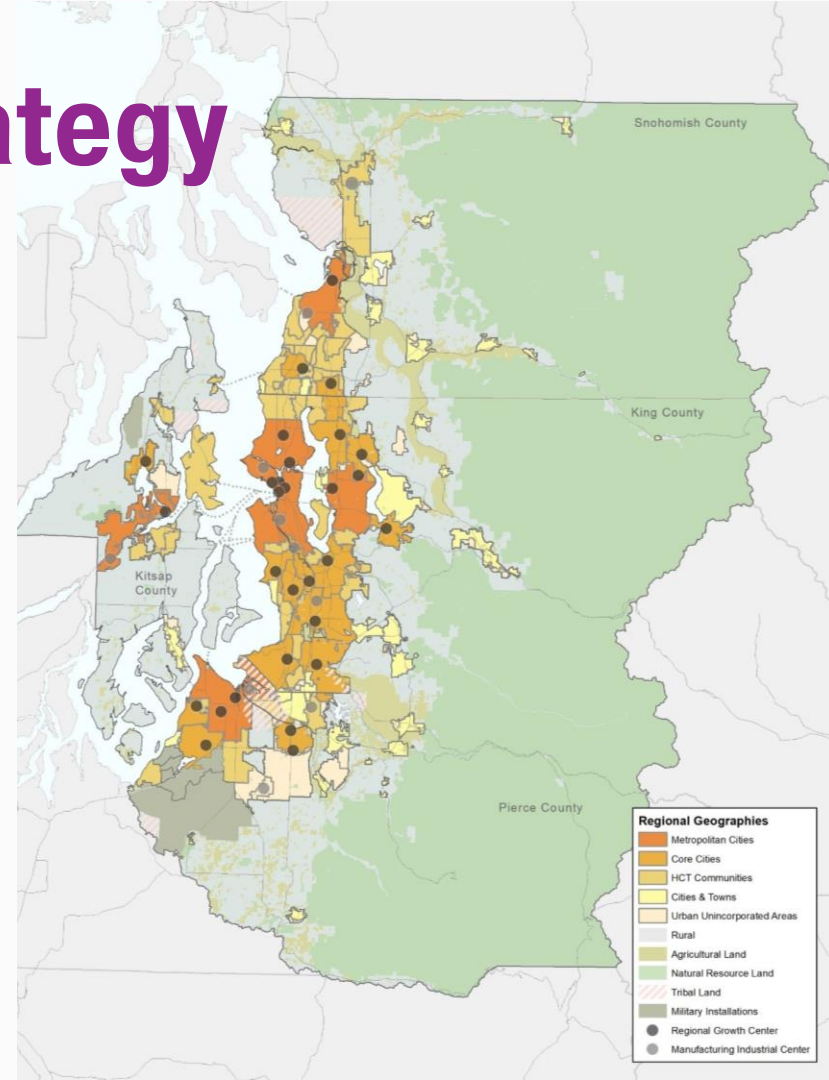
# Regional Growth Strategy

- Regional strategy for allocating growth
- Groups cities and unincorporated areas by *regional geographies*
- Goals:
  - Focus new growth within the urban area
  - Variety of communities, densities, and sizes
  - Better balance of jobs and housing across the region
  - Within the urban area, focus growth in cities and centers
  - Leverage new and existing infrastructure, including transit



# Regional Growth Strategy

- Most growth in Metropolitan, Core, and High Capacity Transit Communities
- **65%** of region's population growth and **75%** of employment growth in regional growth centers and near high-capacity transit
- Lower growth allocations in urban unincorporated and rural compared with long-term trends
- Better jobs-housing balance by shifting employment allocation from King County



# Implementation

- Data, tools, and planning guidance
- Policy and plan review
- Regional transportation planning and funding
- Regional economic development planning
- Other regional actions





# Relationship to High Capacity Transit



# Regional Transportation Plan

- Strategy for mobility and choice
- Meets all state and federal requirements
- \$197 Billion
- Integrated Regional Transit Network
- Get ahead on key issues: environment, innovation & technology, finance, performance measurement



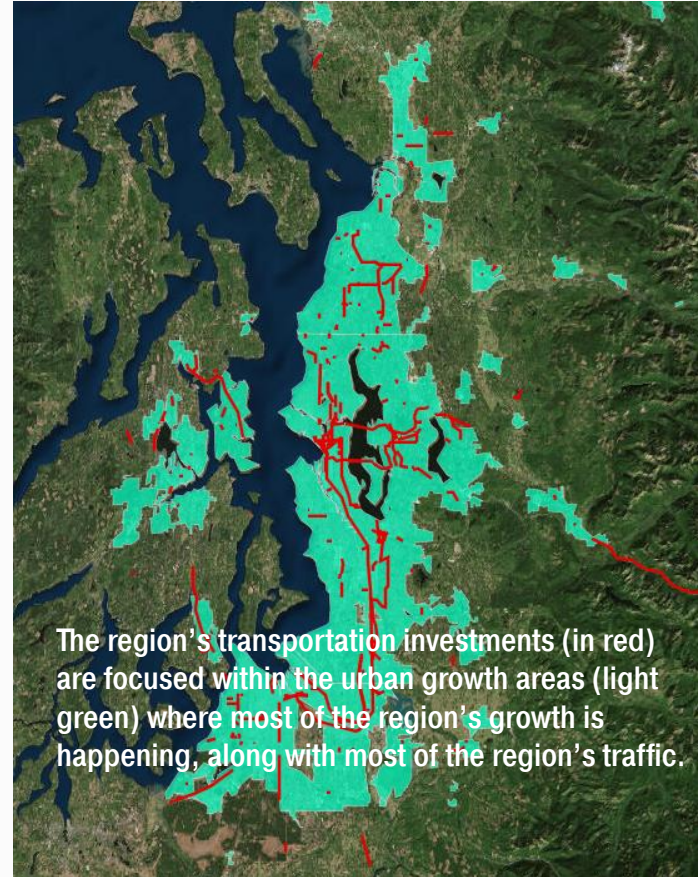
# Regional policy: implementation



## MPP-RC-6

Give regional funding – both for transportation infrastructure and economic development – to support designated **regional growth centers** and **manufacturing/industrial centers**, consistent with the regional vision. Regional funds are prioritized to regional centers.

*draft VISION 2050, p. 19 (2019)*





# Regional Centers

## 29 Regional Growth Centers

- 2.6% of urban growth area (26 mi<sup>2</sup>)
- 5% of population (260,000)
- 30% of jobs (500,000)

## 10 Manufacturing Industrial Centers

- 4% of region's land area (41 mi<sup>2</sup>)
- 0.3% of population (11,000)
- 9.5% of jobs (160,000)



# Aggressive transit program



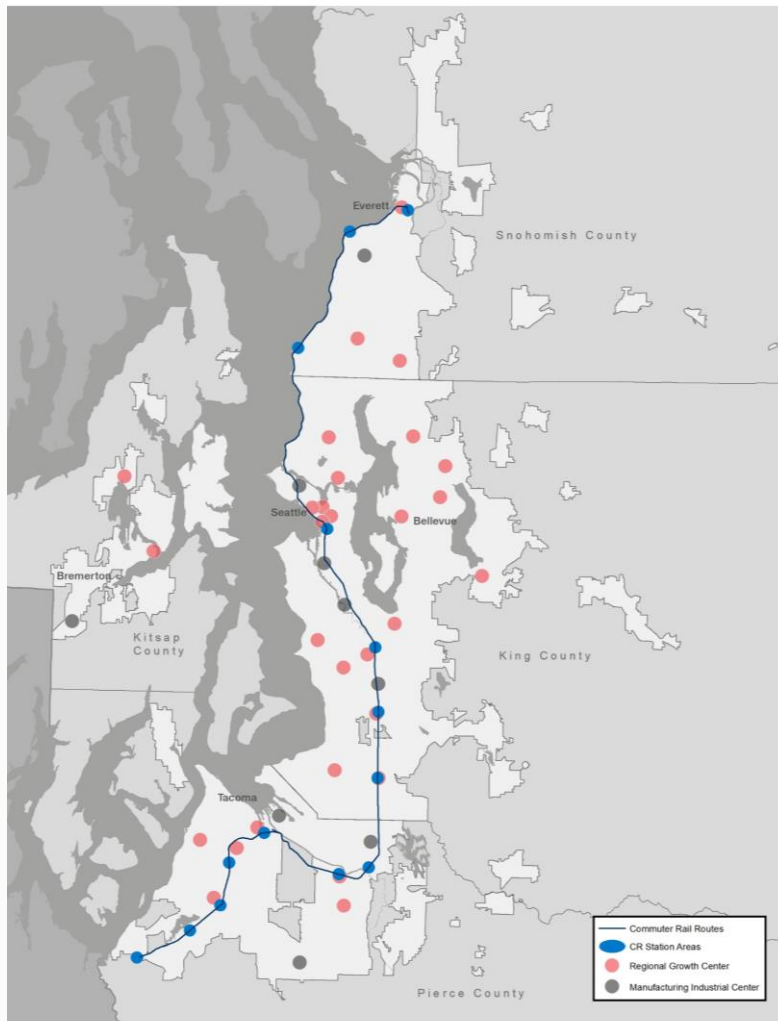
- \$60 billion+ high capacity transit
- Centers and station areas





## 29 Regional Growth Centers

Commuter Rail:  
2 lines/14 stations



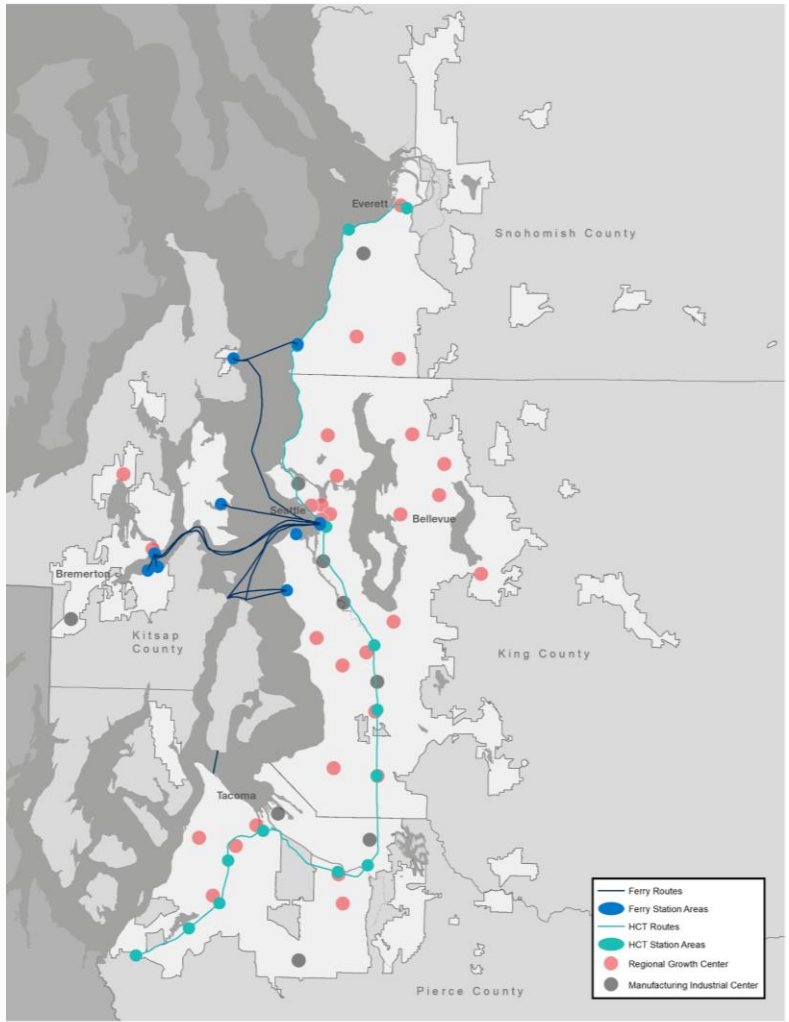




## 29 Regional Growth Centers

**Commuter Rail:**  
2 lines/14 stations

**Ferry:**  
9 terminals/10 routes



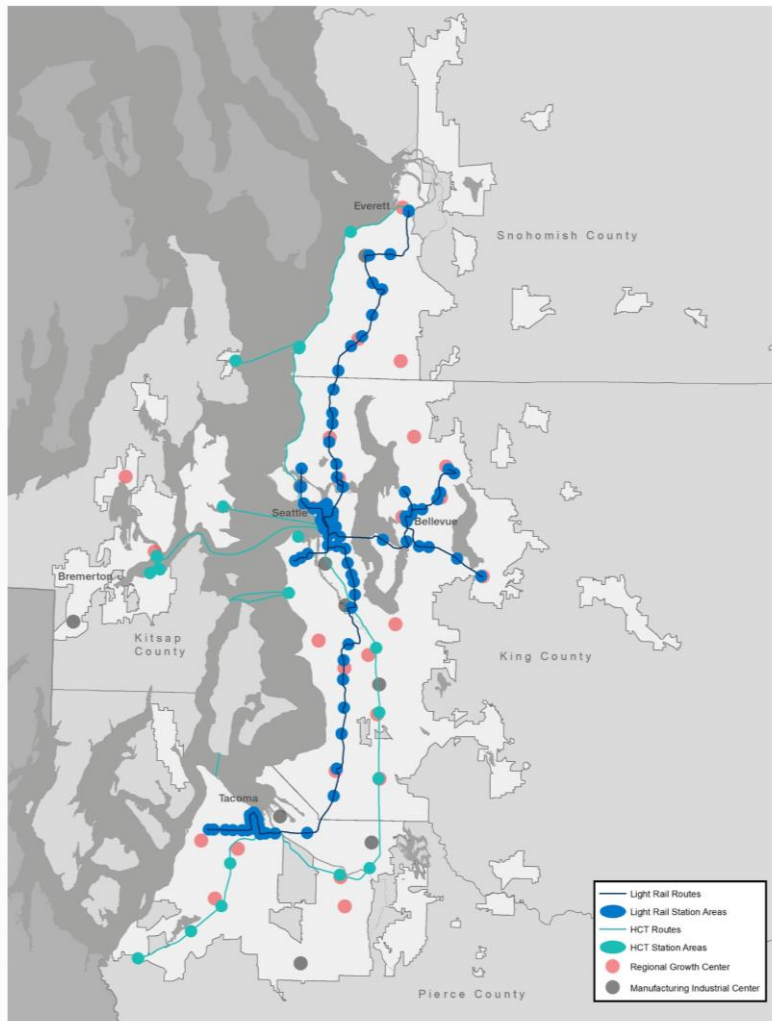


## 29 Regional Growth Centers

**Commuter Rail:**  
2 lines/14 stations

**Ferry:**  
9 terminals/10 routes

**Light Rail:**  
116 miles/80+ stations





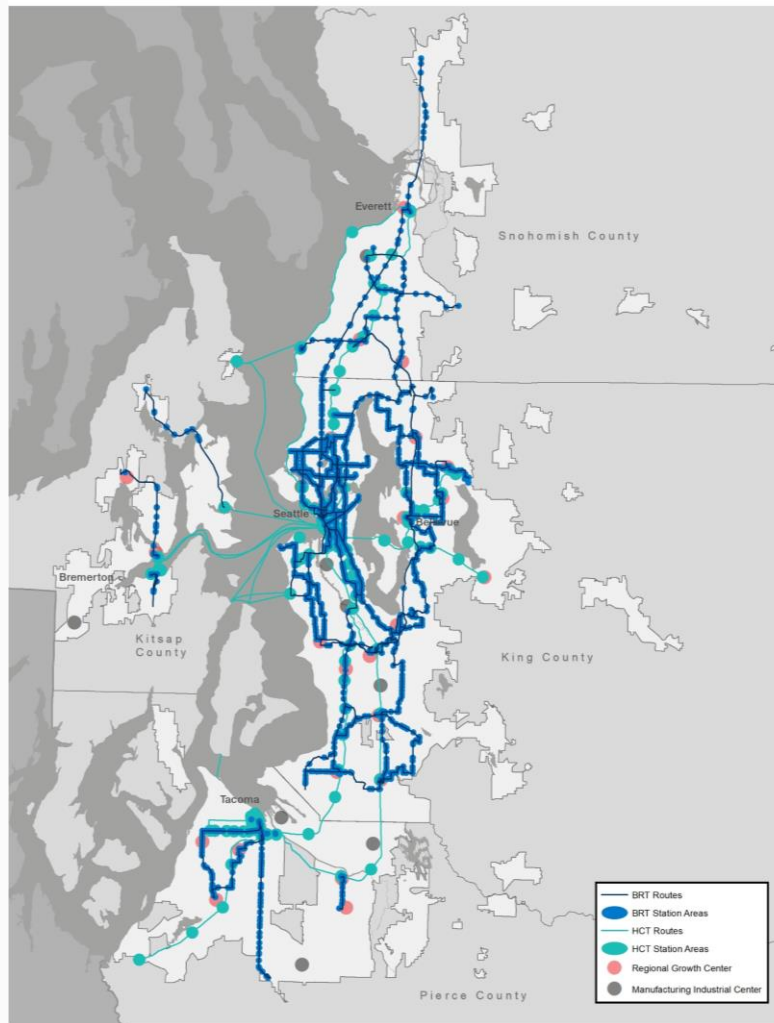
## 29 Regional Growth Centers

**Commuter Rail:**  
2 lines/14 stations

**Ferry:**  
9 terminals/10 routes

**Light Rail:**  
116 miles/80+ stations

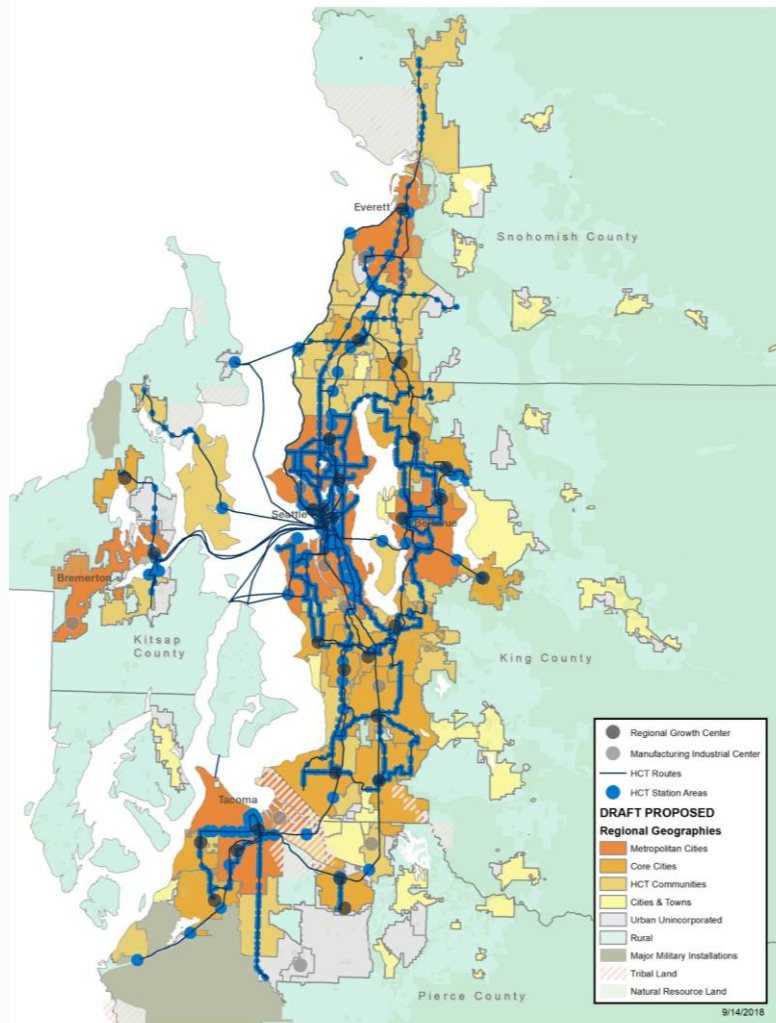
**Bus Rapid Transit:**  
42 routes/~685 stops





## Communities Connected by High Capacity Transit

- 42 Cities & Towns
- 13 Urban Uninc. Communities
- In 2050, **33%** of region's residents & **57%** employment within ½ mile of HCT



# VISION 2050

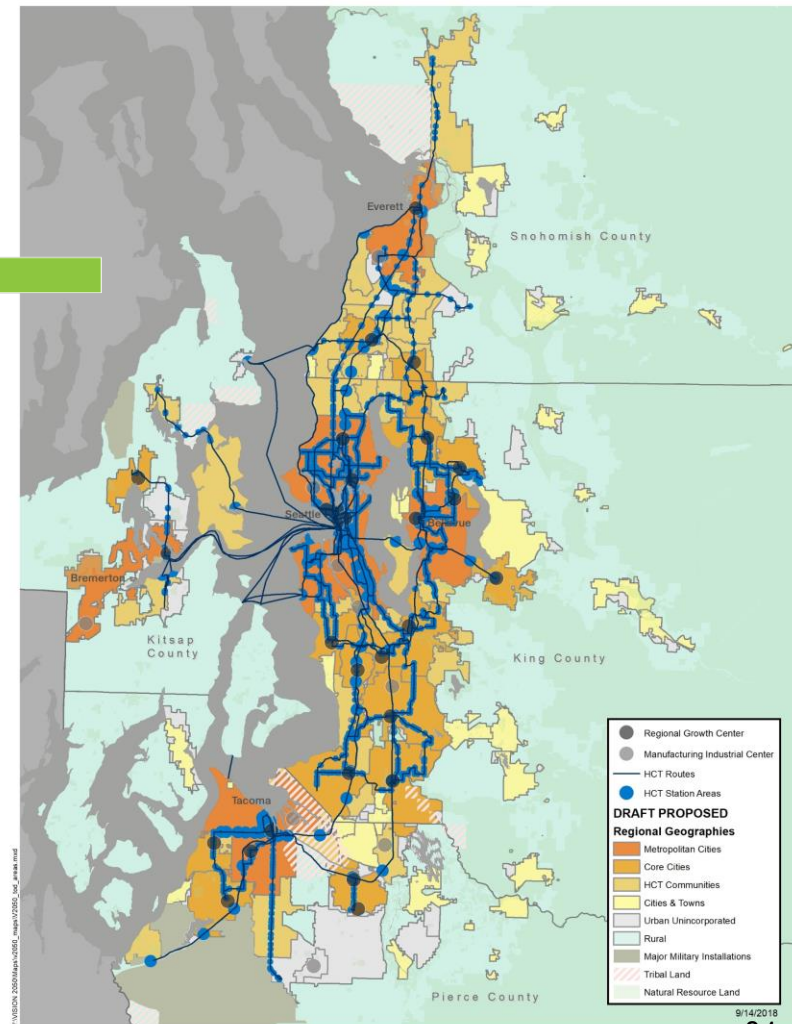
## VISION 2050 Work Program



- Early work
- Scoping, research, planning
- SEPA review, draft plan
- Adoption

## Transit Focused Growth:

- 65% population growth
- 75% employment growth







# Upcoming Work

# Upcoming PSRC Work



## 2020 Project Selection



Puget Sound Regional Council

### Funding Application

<b>Competition</b>	Regional FHWA
<b>Application Type</b>	Corridors Serving Centers
<b>Status</b>	submitted
<b>Submitted:</b>	April 20th, 2018 10:30 AM
<b>Prepopulated with screening form?</b>	No

**Project Information**

- Project Title**  
South Sounder Capacity Expansion
- Regional Transportation Plan ID**  
4057
- Sponsoring Agency**  
Sound Transit
- Cosponsors**  
N/A
- Does the sponsoring agency have "Certification Acceptance" status from WSDOT?**  
Yes
- If not, which agency will serve as your CA sponsor?**  
N/A


**Contact Information**

### The Regional Transportation Plan — 2018



## 2022 RTP Update

DRAFT / December 2017



Puget Sound Regional Council

# Takeaways

**Historic levels of regional growth and change**

**Public supportive — yet growing concerns**

**Regional & local plans in place and being implemented**

**Real issues: housing, mobility, equity, environment**

**Updating plans: adjust and refine policies & strategies**



Ben Bakkenta  
Director of Regional Planning  
[bbakkenta@psrc.org](mailto:bbakkenta@psrc.org)

Thank you.

